

Development and implementation of a customised rapid syndromic diagnostic test for severe pneumonia

Vilas Navapurkar ^{§1}, Josefin Bartholdson Scott ^{§2}, Mailis Maes ², Thomas P Hellyer ^{3,4}, Ellen Higginson ², Sally Forrest ², Joana Pereira-Dias ², Surendra Parmar ⁵, Emma Heasman-Hunt ⁵, Petra Polgarova ¹, Jo Brown ¹, Lissamma Titti ¹, William PW Smith ⁶, Jonathan Scott ³, Anthony Rostron ³, Matthew Routledge ^{5,7}, David Sapsford ⁸, M.Estée Török ^{9,10}, Ronan McMullan ¹¹ David A Enoch ⁵, Vanessa Wong ^{5,7}, The VAPrapid investigators, Martin D Curran ⁵, Nicholas M Brown ⁵ A John Simpson ^{3,4}, Jurgen Herre ¹², Gordon Dougan ², Andrew Conway Morris ^{1,13*}

1. John V Farman Intensive Care Unit, Addenbrooke's Hospital, Cambridge, United Kingdom
2. Cambridge Institute of Therapeutic Immunology & Infectious Disease, Department of Medicine, University of Cambridge, Cambridge, United Kingdom
3. Translational and Clinical Research Institute, Newcastle University, United Kingdom
4. Newcastle upon Tyne Hospitals NHS Foundation Trust, Newcastle, United Kingdom
5. Clinical Microbiology and Public Health Laboratory, Public Health England, Cambridge, United Kingdom
6. Clinical School, University of Cambridge, Cambridge, United Kingdom
7. Infectious Diseases, Addenbrooke's Hospital, Cambridge, United Kingdom
8. Pharmacy Department, Addenbrooke's Hospital, Cambridge, United Kingdom
9. Department of Medicine, University of Cambridge
10. Department of Microbiology, Cambridge University Hospitals NHS Foundation Trust, United Kingdom
11. Wellcome-Wolfson Institute for Experimental Medicine, Queen's University Belfast, United Kingdom
12. Respiratory Medicine, Addenbrooke's Hospital, Cambridge, United Kingdom
13. Division of Anaesthesia, Department of Medicine, University of Cambridge, Cambridge, United Kingdom

[§]The identified authors contributed equally to the manuscript.

*Address for correspondence

Andrew Conway Morris
Division of Anaesthesia
Department of Medicine
Level 4, Addenbrooke's Hospital
Hills Road
Cambridge
CB2 0QQ
Email: ac926@cam.ac.uk
Phone: +44 (0)1223 217889

Word count: abstract 257, manuscript 2998

Running title: Rapid molecular diagnostic in severe pneumonia

Declarations

Ethical approval and consent to participate: Written informed consent was obtained from patients or their proxy decision maker for studies where samples were obtained, where participants regained capacity retrospective consent was sought. The samples for the retrospective study were obtained from the VAPrapid study (ref 15) which was approved by the England and Northern Ireland (13/LO/065) and Scotland (13/SS/0074) National Research Ethics Service committees and sponsored by Newcastle upon Tyne Hospitals NHS Foundation Trust.

The prospective study was approved by the Leeds East Research Ethics Committee (17/YH/0286) Cambridge University Hospitals NHS Foundation Trust was the sponsor.

The assessment of routinely collected data from the comparator group received a consent waiver and was conducted under a protocol approved by the institutional review board (A095506).

Consent for publication: no individual patient data presented, not required

Availability of data: Microbial sequencing data is available from European Nucleotide Archive (ENA) with study accession numbers ERP111277, ERP111280, ERP112277, and ERP018622. Patient data is not publicly available for confidentiality reasons, but anonymised data can be obtained through contact with the corresponding author, subject to appropriate data sharing agreements being in place.

Competing interests: MDC is the inventor on a patent held by the Secretary of State for Health (UK Government) EP2788503, which covers some of the genetic sequences used in this study. VN is a founder, Director and shareholder in Cambridge Infection Diagnostics Ltd (CID Ltd) which is a commercial company aimed at developing molecular diagnostics in infection and antimicrobial and AMR stewardship. NMB, GD and ACM are members of the Scientific Advisory Board of Cambridge Infection Diagnostics Ltd (CID Ltd). All other authors declare no conflict of interest.

Funding

The study was funded by Addenbrooke's Charitable Trust and the NIHR Cambridge Biomedical Resource Centre (Grant 18135 to Professor Dougan). Dr Török is supported by a Clinician Scientist Fellowship (funded by the Academy of Medical Sciences and the Health Foundation) and by the NIHR Biomedical Research Centre. Dr Conway Morris was supported by a Clinical Research Career Development Fellowship from the Wellcome Trust at the time of the work (WT 2055214/Z/16/Z) and is currently supported by an MRC Clinician Scientist Fellowship (MR/V006118/1). The metagenomic sequencing was funded by the Wellcome Trust. VAPrapid was funded Health Innovation Challenge Fund(HICF-510-078;094949/Z/10/X), a parallel funding partnership between the UK Department of Health and Wellcome Trust. Professor Simpson is a National Institute for Health Research (NIHR) Senior Investigator. The views expressed in this publication are those of the authors and not necessarily those of the UK Department of Health or Wellcome Trust. The funders had no role in the analysis of data or decision to publish. The corresponding author had full access to all the data in the study and had final responsibility for the decision to submit for publication.

Acknowledgements

The VAPrapid investigators are Prof DF McAuley, Prof TS Walsh, Dr N Anderson, Dr S Singh, Prof P Dark, Dr A Roy, Prof GD Perkins, Ms L Emerson, Prof B Blackwood, Dr SE Wright, D K Kefala, Prof CM O’Kane, Dr SV Baudouin, Dr RL Patterson, Dr A Agus, Dr J Bannard-Smith, Dr NM Robbin, Prof ID Welters, Dr C Bassford, Dr B Yates, Dr C Spencer, Dr SK Laha, Dr J Hulme, Prof S Bonner, Dr V Linnett, Dr J Sonsken, Dr Van Den Broeck, Dr G Boschman, Mr DWJ Kennan, Dr AJ Allan, Mr G Phair, Ms J Parker and Dr SA Bowett.

The authors thank the consultant intensivists of the John V Farman Intensive Care Unit, Drs P Bradley, P Featherstone, S Ford, M Georgieva, A Johnston, R Mahroof, J Martin, J Preller, K Patel, C Summers, M Trivedi, J Varley, Pharmacist L Radford, the nursing and physiotherapy teams who managed the patients, and the patients and their families who consented to the study. We also thank Torsten Seemann for access to his Kraken database.

Keywords: Antimicrobial stewardship ,Critical Care, Molecular pathology, Pneumonia

Contribution (CReDIT)

VN -Conceptualisation, resources, investigation, writing-review and editing, project administration, funding acquisition, supervision.

JBS -resources, investigation, data curation, formal analysis, writing-original draft.

MM-resources, investigation, writing-review and editing.

TH-resources, investigation, writing-review and editing

EH-investigation, writing-review and editing.

SF-investigation, writing-review and editing.

JD-investigation, writing-review and editing.

SP-investigation, writing-review and editing.

EHH-investigation, writing-review and editing.

PP-investigation, data curation writing-review and editing.

JB-investigation, data curation writing-review and editing.

LT-investigation, data curation writing-review and editing.

WS- data curation writing-review and editing

JS- resources, investigation, writing-review and editing

AR- resources, investigation, writing-review and editing

MR-data curation writing-review and editing.

DS-data curation writing-review and editing.

MET-conceptualisation, investigation, data curation writing-review and editing

DE-investigation, writing-review and editing.

VW-formal analysis, investigation, data curation writing-review and editing.

MDC-Conceptualisation, resources, investigation, writing-review and editing, project administration, funding acquisition, supervision.

NB-Conceptualisation, resources, investigation, writing-review and editing, project administration, supervision.

AJS- resources, investigation, writing-review and editing

JH-Conceptualisation, resources, investigation, writing-review and editing.

GD-Conceptualisation, resources, investigation, writing-review and editing, project administration, funding acquisition, supervision.

ACM-Conceptualisation, methodology, resources, investigation, writing-original draft, project administration, formal analysis, funding acquisition, supervision.

Abstract

Background

Microbial cultures for the diagnosis of pneumonia take several days to return a result, and are frequently negative, compromising antimicrobial stewardship. The objective of this study was to establish the performance of a syndromic molecular diagnostic approach, using a custom TaqMan array card (TAC) covering 52 respiratory pathogens, and assess its impact on antimicrobial prescribing.

Methods

The TAC was validated against a retrospective multi-centre cohort of broncho-alveolar lavage samples. The TAC was assessed prospectively in patients undergoing investigation for suspected pneumonia, with a comparator cohort formed of patients investigated when the TAC laboratory team were unavailable.

Co-primary outcomes were sensitivity compared to conventional microbiology and, for the prospective study, time to result. Metagenomic sequencing was performed to validate findings in prospective samples. Antibiotic free days (AFD) were compared between the study cohort and comparator group.

Results

128 stored samples were tested, with sensitivity of 97% (95% CI 88-100%). Prospectively 95 patients were tested by TAC, with 71 forming the comparator group. TAC returned results 51 hours (IQR 41-69 hours) faster than culture and with sensitivity of 92% (95% CI 83-98%) compared to conventional microbiology. 94% of organisms identified by sequencing were detected by TAC. There was a significant difference in the distribution of AFDs with more AFDs in the TAC group ($p=0.02$). TAC group were more likely to experience antimicrobial de-escalation (OR 2.9 (95% 1.5-5.5)).

Conclusions

Implementation of a syndromic molecular diagnostic approach to pneumonia led to faster results, with high sensitivity and impact on antibiotic prescribing.

Trial registration: The prospective study was registered with clinicaltrials.gov NCT03996330

1 **Introduction**

2 For many decades the diagnosis of infectious diseases has relied on a combination of clinical
3 assessment and microbiological culture. However, cultures are frequently negative ^{1,2} and
4 can take several days to return a result.³ Optimising antimicrobial therapy can be challenging,
5 especially in patients who are at risk of multidrug resistant organisms.² In critically ill
6 patients, this frequently results in the empiric use of broad-spectrum agents, with predictable
7 consequences for antimicrobial resistance and other forms of antimicrobial-related harm.⁴
8 Conversely, failure to identify the causative organism can lead to inappropriate antimicrobial
9 therapy, which is associated with poor outcomes.⁵

10

11 Pneumonia amongst intubated and mechanically ventilated, critically ill patients can be
12 especially difficult to diagnose.⁶ Most critically ill patients are systemically inflamed,⁷
13 clinical examination is unreliable⁸ and there are multiple causes of radiographic lung
14 infiltrates most of which are non-infectious.^{9,10}

15

16 The development of host-based biomarkers for infection, such as C-reactive protein,¹¹
17 procalcitonin,¹² and alveolar cytokine concentrations¹³ have been advanced as useful
18 measures to help rationalise antimicrobial use. However, their utility in the diagnosis^{11,12} and
19 antimicrobial stewardship^{14,15} of pneumonia has been challenged.

20

21 There is, therefore, a pressing need for rapid, sensitive, multi-pathogen-focussed diagnostic
22 tests for pneumonia¹⁶. TaqMan array cards (TAC) enable the conduct of multiple
23 simultaneous single-plex real-time polymerase chain reaction (RT-PCR), with this format
24 allowing rapid and straightforward customisation. Although TACs have shown promising
25 performance relative to conventional microbiology,¹⁷ our previous experience demonstrated

26 that a TAC with restricted coverage of common respiratory pathogens had a limited impact
27 on clinical decision making in critically ill patients.¹⁸ We therefore set out to develop and
28 implement a multi-pathogen array that would have broad applicability for severe pneumonia .
29

30 **Materials and Methods**

31

32 **Card development**

33 Organism selection was informed by review the literature concerning organisms found in
34 severe pneumonia ^{1,2,6,13,18,19}. Details of organism selection and the card layout are shown in
35 supplemental section (Supplemental Figure S1). The card covers 52 organisms (23 bacteria, 2
36 mycobacteria, 6 atypical bacteria, 5 fungi and 16 viruses). The study was undertaken prior to
37 the COVID-19 pandemic starting in 2020.

38

39 **Card validation**

40 **Technical validation**

41 The card was initially validated against stored extracts, synthetic control plasmids and all
42 available External Quality Assessment (EQA) panels from Quality Control for Molecular
43 Diagnostics (www.qcmd.org) (supplemental results).

44

45 **Retrospective cohort validation**

46 A retrospective cohort validation was conducting using stored bronchoalveolar lavage (BAL)
47 samples obtained during the twenty four centre VAPrapid trial of a biomarker for the
48 diagnosis of ventilator-associated pneumonia.¹⁵ VAPrapid centres used semi-quantitative
49 microbiological culture as the reference standard.

50

51

52 **Prospective evaluation**

53 **Setting**

54 Patients were recruited from a 20-bedded teaching hospital Intensive Care Unit (ICU). The
55 unit is a mixed general medical-surgical unit which supports organ and haematology-
56 oncology services.

57

58 **Recruitment**

59 Between February 2018 and August 2019, prospectively identified patients were eligible for
60 inclusion if they were receiving invasive mechanical ventilation, and if the treating intensive
61 care specialist was performing diagnostic bronchoscopy for suspected pneumonia. Written
62 consent was obtained from the patient or a proxy decision maker. The TAC laboratory team
63 were routinely unavailable from Friday 5pm to Monday 8am, and also sporadically
64 unavailable due to leave. Patients who were not included in the study because of a lack of
65 TAC laboratory team availability, and those from the month prior and month following the
66 study, formed the comparator group.

67

68 **Sampling procedure**

69 Bronchoscopy was undertaken in accordance with existing unit protocols (supplemental
70 methods).

71 **TAC testing**

72 Nucleic acids were extracted from BAL prior to loading on the TAC. The TAC was run by a
73 dedicated laboratory team who did not undertake the conventional PCR or cultures, with
74 blinding also assured by the results of the TAC being obtained before those from
75 conventional microbiology. Full details of the TAC process are included in the supplemental
76 section.

77

78

79 **Conventional microbiological testing**

80 BAL samples were processed according to the UK Standards for Microbiology Investigations
81 (SMI),²⁰ with the results of microbiological semi-quantitative culture and conventional PCR
82 for respiratory viruses, herpesviridae and *Pneumocystis jirovecii* forming the reference
83 standard for the TAC (supplemental methods). As an experimental assay, the results of the
84 TAC were not included in the laboratory information system, blinding the assessors of the
85 reference standard to the TAC results.

86

87 **Return of results to clinical team**

88 Following review by a consultant clinical scientist, results were returned to the ICU team.
89 Clinical microbiology advice was available 24 hours/day, and patients underwent weekday
90 daily combined ICU-Microbiology multi-disciplinary review in keeping with existing unit
91 practice (weekend microbiology input was available on request). The study did not mandate
92 any course of action by the treating clinical team. Conventional microbiology results were
93 returned to clinicians via the electronic health record; however in practice these were returned
94 after the TAC results.

95

96 **Outcome measures**

97 The co-primary outcome measures were sensitivity, using conventional microbiology as the
98 reference standard and time to result compared to conventional microbial culture. Time to
99 result for microbial culture was taken as time from completion of lavage to first organism
100 identification, or confirmation of negative growth if no organisms were detected.

101

102 Secondary outcome measures were sensitivity compared to metagenomic microbial
103 sequencing, time to result compared to conventional PCR, days alive and free of antibiotics

104 (antibiotic-free days, AFDs) in seven and twenty-eight days following lavage and change in
105 antibiotic therapy in the seven days following lavage. Qualitative assessment of whether
106 TAC results impacted on antimicrobial change was assessed by clinical notes review by a
107 member of the study team who was not involved in the decision-making process (VW) .

108

109 **Statistical analysis**

110 The difference in median time to result for conventional culture and TAC was assessed by
111 Wilcoxon's matched-pairs test. Where conventional PCR failed, or where the lab did not test
112 for the organism, the corresponding tests from the TAC were removed from calculation of
113 diagnostic performance. Indeterminate cultures ('mixed upper respiratory tract flora') were
114 considered negative. A sensitivity analysis, coding failed conventional PCR and organisms
115 not tested 'negative' was also undertaken. Comparisons of distribution of antibiotic free days
116 between TAC and comparator groups was by Mann-Whitney U test, differences in
117 proportions of escalation and de-escalation decisions were assessed by Chi² test. Analyses
118 were conducted using Prism v9.1 (Graphpad Inc, La Jolla, CA).

119

120

121 **Study size**

122 A planned prospective study size of 100 patients evaluated by TAC was selected to balance
123 cost against including sufficient numbers to be able to make a judgement on the card's
124 clinical utility. As the co-primary endpoint was time to result in a real-world setting that had
125 not been previously evaluated, we did not undertake a formal power calculation.

126

127

128

129 **Ethical and regulatory approvals and funding**

130 The prospective study was approved by the Leeds East Research Ethics Committee
131 (17/YH/0286) Cambridge University Hospitals NHS Foundation Trust was the sponsor, and
132 registered with clinicaltrials.gov (NCT03996330). The assessment of routinely collected data
133 from the comparator group received a consent waiver and was conducted under a protocol
134 approved by the institutional review board (A095506). VAPrapid¹⁵ was approved by the
135 England and Northern Ireland (13/LO/065) and Scotland (13/SS/0074) National Research
136 Ethics Service committees and sponsored by Newcastle upon Tyne Hospitals NHS
137 Foundation Trust.

138

139 **Results**

140 **Technical validation**

141 Following initial validation against stored DNA extracts and synthetic plasmids, all
142 microorganisms from the Quality Control for Molecular Diagnostics 2018 Sepsis EQA Pilot
143 Study were successfully detected (supplemental Table S1).

144

145 **Retrospective cohort validation**

146 The card was tested against the stored samples available from the VAPrapid study¹⁵. 128
147 samples with semi-quantitative culture results were available for analysis. 57 organisms were
148 grown at or above 10⁴ colony forming units(CFU)/ml^{20,21}, with 55 detected by TAC (Table
149 1). The TAC detected a further 295 organisms, including 64 viruses and one atypical
150 organism which the recruiting centres did not test for. Excluding tests for organisms not
151 detectable by culture, 3425 tests on TAC were negative. Sensitivity was 97% (95% CI 88-
152 100%) and specificity 94% (95% CI 93-95%) (Supplemental Table S2). Organisms detected
153 by both TAC and culture had a median cycles to threshold (Ct) value on the TAC of 29 (IQR
154 26-32 range 20-35) whilst those detected by TAC alone had a median Ct value of 33 (IQR
155 30-35 range 20-40) (supplemental Figure S2).

156

157 **Prospective evaluation**

158 Between January 2018 and September 2019 166 ventilated patients were investigated for
159 pneumonia by bronchoscopy, 95 were tested by TAC. Five patients were tested twice by
160 TAC, having suffered a subsequent respiratory deterioration, in total 100 TACs were run. 71
161 patients formed the comparator group (Figure 1). Although inclusion criteria were pragmatic
162 and only required senior clinician suspicion of pneumonia, 92% of cases met full ECDC
163 criteria for clinical pneumonia (Supplemental Figure S3). Of the eight cases not meeting full
164 ECDC criteria, one lacked a formal radiological report of infiltrates, one had no clinical signs
165 of pneumonia, five had no signs of systemic inflammation and one patient lacked both
166 radiological and systemic inflammation. Table 2 shows participant characteristics of the study
167 population and comparator group.

168

169 **Time to result**

170 The median difference in time to result between TAC and conventional culture was 51 hours
171 (IQR 41-69 hours $p < 0.0001$ by Wilcoxon matched pairs), the TAC also returned results more
172 rapidly than conventional PCR in almost all cases (Supplemental Figure S4). The minimum
173 TAC time to return was 4 hours, with median time to result 22 hours (IQR 7-24 hours), most
174 of the delays arose from samples taken outside routine working hours, whilst additional
175 delays with conventional PCR results largely reflect laboratory workflow and batching of
176 samples.

177

178

179

180 **Comparison of organisms detected by TAC compared to conventional microbiology**

181 178 organisms were identified from 100 samples on the TAC (Table 3, Supplemental Table
182 S3). Conventional microbiology detected 66 organisms, with 61 detected by TAC. 27
183 patients had failure of internal control for one or more conventional PCR assays, covering 93
184 organisms. There were no TAC internal control failures and none of the organisms covered
185 by the failed assays were detected on TAC or sequencing (Table 3). Sensitivity and
186 specificity were 92% (95% CI 83-98%) and 97% (95% CI 97-98%) respectively
187 (Supplemental Table S4). Including failed and absent reference standards as ‘negative’ had
188 minimal effect on diagnostic performance (Supplemental Table S5)

189

190 **Comparison by sequencing**

191 98 samples were available for sequencing. Metagenomic sequencing revealed 107 organisms,
192 100 of which were also detected by TAC (Tables 3, S3).

193

194 Concerning the 10 organisms detected by conventional microbiology or sequencing but
195 missed by TAC, one organism, that was positive by both culture and sequencing albeit in
196 different patients, was *Citrobacter freundii*, for which we did not have a sequence on the
197 card. A further five pathogens were detected by sequencing (*Staphylococcus aureus*,
198 *Legionella* spp., and *Staphylococcus epidermidis*) or both culture and sequencing (two *E.*
199 *faecium*). Although these five were detected by TAC, they did not pass the internal quality
200 control standards required for reporting and were considered ‘negative’ results. The
201 remaining three organisms, two rhinovirus by conventional PCR and one *Staphylococcus* spp.
202 by sequencing, were not detected by TAC at all.

203 One case of *Aspergillus fumigatus* was detected on the TAC, and although no moulds were
204 cultured, the lavage galactomannan antigen test was highly positive (5.92 optical density
205 index (ODI), laboratory reference range <0.5 ODI).

206

207 **Quantitation**

208 Twenty-five organisms were grown on conventional culture at $\geq 10^4$ CFU/ml, the
209 conventional cut off for quantitative culture of lavage.^{20, 21} The median cycles to threshold
210 (Ct) for these organisms on the TAC was 27 (IQR 24-29, range 20-33). In contrast, culturable
211 organisms detected on TAC but not on culture had a median Ct of 32 (IQR 30-34, range 22-
212 38) (supplemental Figure S2) .

213

214 **Antibiotic prescribing**

215 Patients in the TAC and comparator cohorts had similar severity of illness, severity of
216 respiratory failure and demographic features (Table 2). Patients managed with the TAC had a
217 significantly different distribution of AFDs to the comparator group in the 7 days following
218 bronchoscopy ($p=0.02$ by Mann-Whitney U-test), with more AFDs in the TAC cohort. This
219 difference did not retain significance over 28 days (Supplemental Figure S5). Overall 72
220 (76%) of TAC patients had their antibiotics changed in the seven days following
221 bronchoscopy, with a total of 116 changes made (Table 4). In the comparator group 50
222 (70%) of patients experienced a total of 65 changes. Whilst 63% of decisions in the TAC
223 group led to de-escalation, only 37% of decisions in the comparator group were de-escalation
224 decisions (OR 2.9 (95% CI 1.5-5.5) $p=0.008$ by Chi-squared). Decisions which were judged
225 to be related to the TAC result were weighted further towards de-escalation (73% of all TAC-
226 related changes, Table 4). 11 (30%) of escalations in the TAC group were judged to have
227 been targeted escalations in response to TAC results. In a further six cases negative TAC
228 results prompted investigation for alternative diagnoses.

229

230

231 **Discussion**

232 We demonstrate that a customised molecular diagnostic, designed to meet the needs of a
233 specific clinical setting produced accurate results in a clinically important time-frame and
234 was associated with an increase in antibiotic-free days relative to the comparator group in the
235 week following investigation. Diagnostic performance was similar when assessed in stored
236 samples from multiple centres, indicating a generalisable result.

237

238 Molecular diagnostic platforms for respiratory infection syndromes have, until recently,
239 largely focussed on viral pathogens.¹⁶ However, the need to optimise antimicrobial therapy
240 whilst limiting the over-use of these drugs has led to repeated calls for bacterial-focussed
241 diagnostics.^{16,22} TACs have been previously reported for use in pneumonia.^{18,23, 24} However,
242 apart from our previous report¹⁸ that demonstrated limited clinical impact due to restricted
243 organism coverage, none of the other reports have included ventilated patients and were
244 restricted to retrospective analysis of stored samples. Commercial multiple-pathogen arrays
245 that include respiratory bacteria have recently become available. However, most of reports of
246 their use in ventilated patients remain limited to describing diagnostic performance,
247 reporting ‘potential’ to change antimicrobial therapy rather than impact on clinical
248 practice^{3,25,26}. Concerns have been raised about the risks of over-treatment from molecular
249 diagnostics^{16,27,28}, whilst conversely promising tests with the potential to change therapy have
250 not always proven this in clinical practice^{15,18}. These commercially available assays lack the
251 broad coverage and customisability of the TAC, with consistent concerns raised around
252 limited organism coverage adversely impacting treatment decisions.^{3,18,25,26}

253

254 Although there is now widespread acceptance of the presence of a respiratory
255 microbiome,^{29,30} the lungs of ventilated patients present a challenge to highly sensitive

256 molecular diagnostics¹⁶. The proximal respiratory tract of ventilated patients becomes rapidly
257 colonised with predominantly Gram negative organisms.^{31,32} This can occur in the absence of
258 infection, and there is a risk that highly sensitive techniques will detect colonising organisms,
259 driving unintended increases in antimicrobial use.¹⁶ The use of protected lower airway
260 specimens, with growth $\geq 10^4$ CFU/ml for BAL have been used to distinguish infection from
261 colonisation.^{21,33} We adapted this approach in this study, using the quasi-quantitative Ct
262 value provided by RT-PCR and testing protected bronchoalveolar samples. Using the
263 comparison of the Ct values of organisms detected by culture and those detected by TAC
264 without culture, we suggest that a Ct threshold of 32 be used to identify infecting rather than
265 colonising organism (supplemental Figures S2, S6).

266

267 One of the problems that has beset bacterial diagnostics studies has been the absence of a
268 ‘gold standard’ against which the candidate can be assessed,^{16,22,34} as conventional culture is
269 imperfect. For this study we used a combination of conventional microbiology (culture and
270 viral PCR) and metagenomic sequencing. 10 organisms identified by conventional
271 microbiology or sequencing were not detected by the TAC. Overall the TAC detected more
272 organisms than either culture or sequencing, reflecting the higher sensitivity of qPCR.
273 However, without a perfect validation method we cannot be certain these were not ‘false
274 positives’ and have counted them as such for the calculation of specificity. The sequencing
275 and culture results give clinicians considerable confidence in the results provided.

276

277 The selection of organisms targeted on the card was crucial, and informed by our previous
278 experience where omission of key organisms significantly limited the impact of a similar
279 card.¹⁸ Given the case mix of our unit, with a high proportion of immunosuppressed patients,
280 we opted to include a number of low pathogenicity organisms, (i.e. coagulase-negative

281 *Staphylococci(CNS), Enterococci and Candida albicans*), as well as Herpesviridae, which
282 we routinely tested for. The detection of these organisms can be challenging to interpret³⁵,
283 given that many critically ill patients have a degree of immunoparesis, even if not classically
284 immunosuppressed,^{6,36} their significance remains uncertain. As our laboratory routinely
285 reported these organisms on conventional microbiology the clinical team were already
286 confronted with this issue. The inclusion of CNS also aids with the interpretation of the
287 detection of the *mecA* gene, which is commonly carried by these organisms, thus helping
288 identify MRSA. The lack of CNS on commercial cards has been noted to impair
289 interpretation of *mecA* in clinical samples^{25,37}. However the ready customisability of the
290 TAC would allow units to remove such organisms, as well as add other organisms of local
291 significance as we have done subsequently during the COVID-19 pandemic³⁸.

292

293 The use of a contemporaneous comparator cohort allowed for comparisons of antibiotic
294 prescribing within the context of the implementation of the TAC and any heightened
295 awareness of antimicrobial stewardship it may have engendered. Despite this, the comparator
296 cohort saw a greater proportion of escalation decisions in the week following lavage, and had
297 fewer antibiotic-free days. The lack of difference in AFDs at day 28 is unsurprising, as
298 suspected pneumonia is only one of multiple drivers of antibiotic use. Although the
299 comparator and TAC groups had similar characteristics, our observational design means that
300 we cannot be certain that unmeasured confounders did not contribute to the effects seen.

301

302 This study established a molecular diagnostic test to meet the needs of a particular intensive
303 care unit, and implemented it in the context of a well-established antimicrobial stewardship
304 program. Although the demonstration of similar performance on stored samples from
305 multiple centres is reassuring, the impact on antimicrobial stewardship is likely to be context-

306 dependent. Replication in additional settings with distinct approaches to stewardship is
307 required before we can be certain of its external generalisability, whilst evaluation in a
308 randomised, controlled trial would help reduce any bias that may have arisen from our
309 observational study design. We believe this approach represents a promising new approach to
310 the management of severe pneumonia.

311

312 **References**

- 313 1. Cilloniz C, Ewig S, Polverino E, et al. Microbial aetiology of community-
314 acquired pneumonia and its relation to severity. *Thorax*. 2011;66(4):340-346.
- 315 2. Vincent J-L, Sakr Y, Singer M, et al. Prevalence and Outcomes of Infection
316 Among Patients in Intensive Care Units in 2017. *JAMA*. 2020;323(15):1478–10.
- 317 3. Gadsby NJ, McHugh MP, Forbes C, et al. Comparison of Unyvero P55
318 Pneumonia Cartridge, in-house PCR and culture for the identification of respiratory
319 pathogens and antibiotic resistance in bronchoalveolar lavage fluids in the critical care
320 setting. *Eur J Clin Microbiol Infect Dis*. 2019;38(6):1171–1178.
- 321 4. Arulkumaran N, Routledge M, Schlebusch S, Lipman J, Morris AC.
322 Antimicrobial-associated harm in critical care: a narrative review. *Intensive Care Med*.
323 January 2020:1-11.
- 324 5. Iregui M, Ward S, Sherman G, Fraser VJ, Kollef MH. Clinical Importance of
325 Delays in the Initiation of Appropriate Antibiotic Treatment for Ventilator-Associated
326 Pneumonia. *Chest* 2002;122(1):262-268.
- 327 6. Morris AC. Management of pneumonia in intensive care. *J Emerg Crit Care*
328 *Med*. 2018;2:101-101.
- 329 7. Rangel-Frausto MS, Pittet D, Costigan M, Hwang T, Davis CS, Wenzel RP.
330 The Natural History of the Systemic Inflammatory Response Syndrome (SIRS).
331 *JAMA*. 1995;273(2):117–5.
- 332 8. Lichtenstein D, Goldstein I, Mourgeon E, Cluzel P, Grenier P, Rouby J-J.
333 Comparative diagnostic performances of auscultation, chest radiography, and lung
334 ultrasonography in acute respiratory distress syndrome. *Anesthesiology*.
335 2004;100(1):9-15.
- 336 9. Meduri GU, Mauldin GL, Wunderink RG, et al. Causes of fever and
337 pulmonary densities in patients with clinical manifestations of ventilator-associated
338 pneumonia. *Chest*. 1994;106(1):221-235.
- 339 10. Conway Morris A, Kefala K, Wilkinson TS, et al. Diagnostic importance of
340 pulmonary interleukin-1{beta} and interleukin-8 in ventilator-associated pneumonia.
341 *Thorax*. 2010;65(3):201-207.

- 342 11. Pova P, Coelho L, Almeida E, et al. C-reactive protein as a marker of
343 ventilator-associated pneumonia resolution: a pilot study. *Eur Resp J*. 2005;25(5):804-
344 812.
- 345 12. Pfister R, Kochanek M, Leygeber T, et al. Procalcitonin for diagnosis of
346 bacterial pneumonia in critically ill patients during 2009 H1N1 influenza pandemic: a
347 prospective cohort study, systematic review and individual patient data meta-analysis.
348 *Critical Care*. 2014;18(2):1-11.
- 349 13. Hellyer TP, Morris AC, Mcauley DF, et al. Diagnostic accuracy of pulmonary
350 host inflammatory mediators in the exclusion of ventilator-acquired pneumonia.
351 *Thorax*. 2015;70(1):41-47.
- 352 14. Huang DT, Yealy DM, Filbin MR, et al. Procalcitonin-Guided Use of
353 Antibiotics for Lower Respiratory Tract Infection. *N Engl J Med*. 2018;379(3):236-
354 249.
- 355 15. Hellyer TP, McAuley DF, Walsh TS, et al. Biomarker-guided antibiotic
356 stewardship in suspected ventilator-associated pneumonia (VAPrapid2): a randomised
357 controlled trial and process evaluation. *Lancet Resp Med*. December 2019:1-10.
- 358 16. Hanson KE, Azar MM, Banerjee R, et al. Molecular Testing for Acute
359 Respiratory Tract Infections: Clinical and Diagnostic Recommendations From the
360 IDSA's Diagnostics Committee. *Clin Infect Dis*. 2020;5:401-408.
- 361 17. Steensels D, Reynders M, Descheemaeker P, et al. Clinical evaluation of a
362 multi-parameter customized respiratory TaqMan® array card compared to
363 conventional methods in immunocompromised patients. *J Clin Virol*. 2015;72:36-41.
- 364 18. Jones N, Conway Morris A, Curran MD et al. Evaluating the use of a 22-
365 pathogen TaqMan array card for rapid diagnosis of respiratory pathogens in Intensive
366 Care. *J Med Microbiol*. 2020; 69: 971-978.
- 367 19. Gadsby NJ, Russell CD, McHugh MP, et al. Comprehensive Molecular
368 Testing for Respiratory Pathogens in Community-Acquired Pneumonia. *Clin Infect*
369 *Dis*. 2016;62(7):817-823.
- 370 20. Public Health England. Investigation of bronchoalveolar lavage, sputum and
371 associated specimens UK SMI B 57 issue 3.5 (May 2019) (available from
372 [https://www.gov.uk/government/publications/smi-b-57-investigation-of-](https://www.gov.uk/government/publications/smi-b-57-investigation-of-bronchoalveolar-lavage-sputum-and-associated-specimens)
373 [bronchoalveolar-lavage-sputum-and-associated-specimens](https://www.gov.uk/government/publications/smi-b-57-investigation-of-bronchoalveolar-lavage-sputum-and-associated-specimens)) accessed 29/4/2021
- 374 21. Plachouras D, Lepape A, Suetens C. ECDC definitions and methods for the
375 surveillance of healthcare-associated infections in intensive care units. *Intensive Care*
376 *Med*. October 2018:1-3.
- 377 22. The Lancet Respiratory Medicine. Pneumonia research: time to fill in the
378 gaps. *Lancet Resp Med*. 2019;7(12):993.
- 379 23. Wolff BJ, Bramley AM, Thurman KA, et al. Improved Detection of
380 Respiratory Pathogens by Use of High-Quality Sputum with TaqMan Array Card
381 Technology. Onderdonk AB, ed. *J Clin Microbiol*. 2017;55(1):110-121.

- 382 24 Hercik C, Cosmas L, Mogeni OD, et al. A diagnostic and epidemiologic
383 investigation of acute febrile illness (AFI) in Kilombero, Tanzania. Schildgen O, ed.
384 *PLoS ONE*. 2017;12(12):e0189712-e0189720.
- 385 25 Peiffer-Smadja N, Bouadma L, Mathy V, et al. Performance and impact of a
386 multiplex PCR in ICU patients with ventilator-associated pneumonia or ventilated
387 hospital-acquired pneumonia. *Crit Care*. 2020;24:366
388 .
- 389 26 Monard C, Pehlivan J, Auger G, et al. Multicenter evaluation of a syndromic
390 rapid multiplex PCR test for early adaptation of antimicrobial therapy in adult patients
391 with pneumonia. *Crit Care*. 2020;24:434
392
- 393 27. Houben RMGJ, Lalli M, Kranzer K, Menzies NA, Schumacher SG, Dowdy
394 DW. What if They Don't Have Tuberculosis? The Consequences and Trade-offs
395 Involved in False-positive Diagnoses of Tuberculosis. *Clin Infect Dis*. 2019;68:150-
396 156
397
- 398 28. Weinrib DA, Capraro GA. The Uncertain Clinical Benefit of the T2Bacteria
399 Panel. *Ann Intern Med*. 2019;170:888-889
400
- 401 29. Nolan TJ, Gadsby NJ, Hellyer TP, et al. Low-pathogenicity *Mycoplasma* spp.
402 alter human monocyte and macrophage function and are highly prevalent among
403 patients with ventilator-acquired pneumonia. *Thorax*. 2016;71(7):594-600.
- 404 30. Zakharkina T, Martin-Loeches I, Matamoros S, et al. The dynamics of the
405 pulmonary microbiome during mechanical ventilation in the intensive care unit and the
406 association with occurrence of pneumonia. *Thorax*. 2017;72(9):803-810.
- 407 31. Ewig S, Torres A, El-Ebiary M, et al. Bacterial colonization patterns in
408 mechanically ventilated patients with traumatic and medical head injury. Incidence,
409 risk factors, and association with ventilator-associated pneumonia. *Am J Respir Crit
410 Care Med*. 1999;159(1):188-198.
- 411 32. Roquilly A, Torres A, Villadangos JA, et al. Pathophysiological role of
412 respiratory dysbiosis in hospital-acquired pneumonia. *Lancet Resp Med*.
413 2019;7(8):710-720.
- 414 33. Morris AC, Kefala K, Simpson AJ, et al. Evaluation of the effect of diagnostic
415 methodology on the reported incidence of ventilator-associated pneumonia. *Thorax*.
416 2009;64(6):516-522.
- 417 34. Bhat N, O'Brien KL, Karron RA, Driscoll AJ, Murdoch DR, the Pneumonia
418 Methods Working Group. Use and Evaluation of Molecular Diagnostics for
419 Pneumonia Etiology Studies. *Clin Infect Dis*. 2012;54(suppl 2):S153-S158.
- 420 35. Hagel S, Scherag A, Schuierer L, et al. Effect of antiviral therapy on the
421 outcomes of mechanically ventilated patients with herpes simplex virus detected in the
422 respiratory tract: a systematic review and meta-analysis. *Crit Care*. 2020;24(1):584-
423 10.

- 424 36. Morris AC, Datta D, Shankar-Hari M, et al. Cell-surface signatures of immune
425 dysfunction risk-stratify critically ill patients: INFECT study. *Intensive Care Med.*
426 2018;44(5):627-635.
- 427 37. Webber DM, Wallace MA, Burnham CA, Anderson NW. Evaluation of the
428 BioFire FilmArray Pneumonia Panel for Detection of Viral and Bacterial Pathogens in
429 Lower Respiratory Tract Specimens in the Setting of a Tertiary Care Academic
430 Medical Center. *J Clin Microbiol.* 2020;58:e00343-20
431
- 432 38. Maes M, Higginson E, Pereira-Dias J, et al. Ventilator-associated pneumonia
433 in critically ill patients with COVID-19. *Crit Care.* 2021;25(1):25–11.
- 434
- 435
- 436

437 **Tables**
 438
 439

Organism detected	Frequency of growth ($\geq 10^4$ CFU/ml) on conventional culture	Frequency by TAC (numbers detected at Ct \leq 32 shown in brackets)
Gram negative		
<i>Acinetobacter baumannii</i> complex	2	4 (3)
<i>Enterobacter aerogenes</i>	1	0*
<i>Enterobacter cloacae</i>	2	7 (5)
<i>Enterococcus faecalis</i>	0	2 (1)
<i>Enterococcus faecium</i>	2	15 (9)
<i>Escherichia coli</i>	6	44 (16)
<i>Enterobacteriaceae</i> (not further specified)	0	7 (3)
<i>Haemophilus influenzae</i>	3	23 (19)
<i>Haemophilus haemolyticus</i>	1	0*
<i>Klebsiella pneumoniae</i>	2	13 (6)
<i>Legionella</i> spp. (non-pneumophilia)	0	1 (1)
<i>Moraxella catharralis</i>	1	5 (4)
<i>Morganella morganii</i>	0	1 (1)
<i>Mycoplasma pneumoniae</i>	0	1 (1)
<i>Neisseria meningitidis</i>	0	1 (1)
<i>Proteus</i> spp. [#]	2	7 (5)
<i>Pseudomonas aeruginosa</i>	5	10 (9)
<i>Serratia marcescens</i>	1	5 (3)
Gram positive		
<i>Staphylococcus aureus</i>	21	32 (28)
<i>Staphylococcus epidermidis</i>	0	12 (3)
Other coagulase negative <i>Staphylococcus</i>	0	9 (1)
<i>Stenotrophomonas maltophilia</i>	2	11 (5)
<i>Streptococcus pneumoniae</i>	0	15 (10)
<i>Streptococcus pyogenes</i>	0	1 (1)
<i>Streptococcus</i> spp. (not further specified)	0	37 (25)
Fungi		
<i>Aspergillus fumigatus</i> .	0	1 (1)
<i>Candida albicans</i>	4	17 (7)
<i>Candida</i> spp.	2	5 (3)
Viruses (not tested for by conventional microbiology)		
Coronavirus OC43		1 (1)
Cytomegalovirus		6 (1)
Epstein-Barr Virus		15 (3)
Herpes simplex virus		34 (26)
Influenza A		3 (3)
Parainfluenza virus		1 (1)
Rhinovirus		4 (4)

440
 441 **Table 1: culture of microorganisms from 128 stored samples from the VAPrapid clinical**
 442 **trial¹⁵ and results from the TAC.** CFU- colony forming units/ml, Ct -cycles to crossing
 443 threshold.
 444 *not on card
 445 [#] culture reported as *Proteus mirabilis*, on TAC reported as genus-level *Proteus* spp.
 446
 447
 448
 449

450
451
452

Parameter	TAC patients (95 patients)	Comparator group (71 patients)
Median age (range)	60 (21-86)	62 (18-83)
n (%) female	41 (43 %)	27 (38 %)
Median (IQR) functional comorbidity index	1 (2)	1 (2)
n (%) with community-acquired pneumonia	34 (36%)	20 (28%)
n (%) hospital-acquired pneumonia	61 (64%)	51 (72%)
of HAP n (%) ventilator-associated	24 (39%)	27 (52%)
Median (IQR) APACHE II score on admission	16 (10)	16 (9)
% receiving antibiotics at time of lavage	82%	96%
Median (IQR) FiO ₂ prior to bronchoscopy	0.5 (0.25)	0.5 (0.30)
Median (IQR) white cell count (x10 ⁹ /L)	10.5 (12.4)	10.7 (9.5)
Median (IQR) neutrophil count (x10 ⁹ /L)	8.6 (11.5)	8.8 (8.63)
Median (IQR) C-reactive protein concentration (mg/L)	198 (153)	146 (154)
28-day mortality n (%)	30 (32%)	21 (30%)

453
454
455
456
457
458
459

Table 2: Baseline characteristics of study population. APACHE II, acute physiology and chronic health evaluation II, FiO₂, fraction of inspired oxygen.

Organism detected	Frequency (by conventional microbiology)	Frequency (by TAC)	Frequency (by sequencing)
Bacteria			
<i>Citrobacter freundii</i>	1*	0	1*
<i>Enterobacter cloacae</i>	2	8	3
<i>Enterococcus faecalis</i>	0	3	0
<i>Enterococcus faecium</i>	3	7	7
<i>Escherichia coli</i>	6	14	6
<i>Klebsiella pneumoniae</i>	3	5	3
<i>Enterobacteriaceae</i> (not further specified)	0	1	2
<i>Haemophilus influenzae</i>	0	3	2
<i>Legionella pneumophila</i>	1**	1	1
<i>Legionella</i> spp. (non-pneumophila)	0	2	2
<i>Moraxella catharralis</i>	0	1	0
<i>Mycoplasma pneumoniae</i>	0	1	1
<i>Proteus</i> spp.	0	2	0
<i>Pseudomonas aeruginosa</i>	2	5	4
<i>Serratia marcescens</i>	1	3	0
<i>Staphylococcus aureus</i>	2	8	8
<i>Staphylococcus epidermidis</i>	0	9	2
Other coagulase negative <i>Staphylococcus</i>	0	1	2
Other <i>Staphylococcus</i> spp. (not further specified)	0	0	1
<i>Stenotrophomonas maltophilia</i>	2	4	2
<i>Streptococcus pneumoniae</i>	1	9	6
<i>Streptococcus pyogenes</i>	0	1	0
<i>Streptococcus</i> spp. (not further specified)	0	23	10
Mixed upper respiratory tract flora	1	N/A	N/A
Fungi			
<i>Aspergillus</i> spp.	0***	1	0
<i>Candida albicans</i>	1	12	10
<i>Candida</i> spp.	0	1	1
<i>Pneumocystis jirovecii</i>	4	4	3
Viruses			
Coronavirus [#]	0	3	1
Cytomegalovirus	5	7	4
Epstein-Barr Virus	1	6	1
Herpes simplex virus	7	11	7
Human metapneumovirus	1	1	1
Influenza A	7	7	5
Influenza B	3	3	2
Parainfluenza virus	4	4	4
Rhinovirus	8	8	7

460

461

462

463

464

465

466

467

468

469

470

471

472

Table 3: Summary of organisms detected by conventional microbiological testing (left hand column), by TAC (middle column), and by microbial sequencing (right hand column). * One hit not found in same patient; not on card. **Legionella urinary antigen test positive. *** Positive BAL galactomannan enzyme immunoassay (>0.5 units) with CT consistent with fungal pneumonia and known risk factors but fungal cultures were not positive. # refers to human coronavirade OC43, 229E and NL63, no tests were undertaken for SARS-CoV2 and final testing occurred in August 2019.

Antibiotic change	Details of change	TAC cohort		Comparator cohort
		TAC-related	TAC-unrelated	
De-escalation	Stopping macrolides	14	3	6
	Stopping carbapenem or anti-pseudomonal penicillin	10	14	10
	Narrowing from carbapenem/antipseudomonal penicillin to narrower spectrum penicillin	7	0	1
	Stopping cotrimoxazole	6*	1	0
	Stopping antivirals	3	0	0
	Stopping aminoglycosides	2	3	0
	Stopping other agents	6	4	7
Escalation	Start antivirals	7	0	1
	Start or broaden antifungals cover	3	7**	6
	Broadened Gram negative cover (add anti-pseudomonal penicillin, aminoglycoside or carbapenem)	3	16	28
	Add glycopeptide	4	1	5
	Add cover for atypical organism	1	1	1

473
474
475
476
477
478
479
480

Table 4: Detail of changes in antibiotic therapy in the seven days following lavage in the TAC and comparator cohorts. Changes judged to be TAC-related are shown in the left-hand sub-column for the TAC group. Several patients had more than one change in antibiotic therapy. *includes two de-escalations to prophylactic dose, ** includes two escalations from prophylactic to therapeutic dose.

481 **Figure legends**

482

483

484

485 **Figure 1: Study flow diagram**

486 *included in comparator group as TAC laboratory team not available to process samples

487

488

489

490

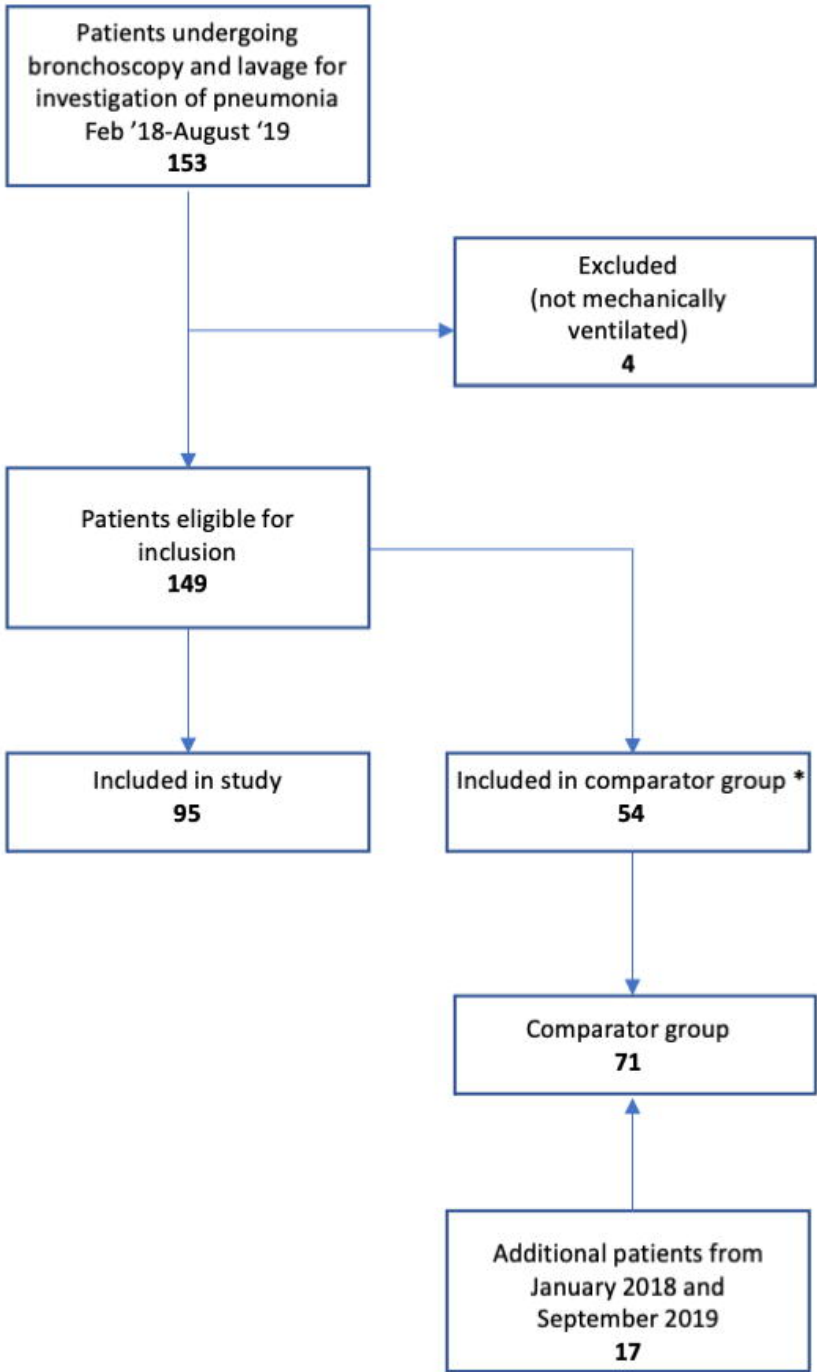
491 **Figure 2: Distribution of days alive and free of antibiotics in the seven days following**

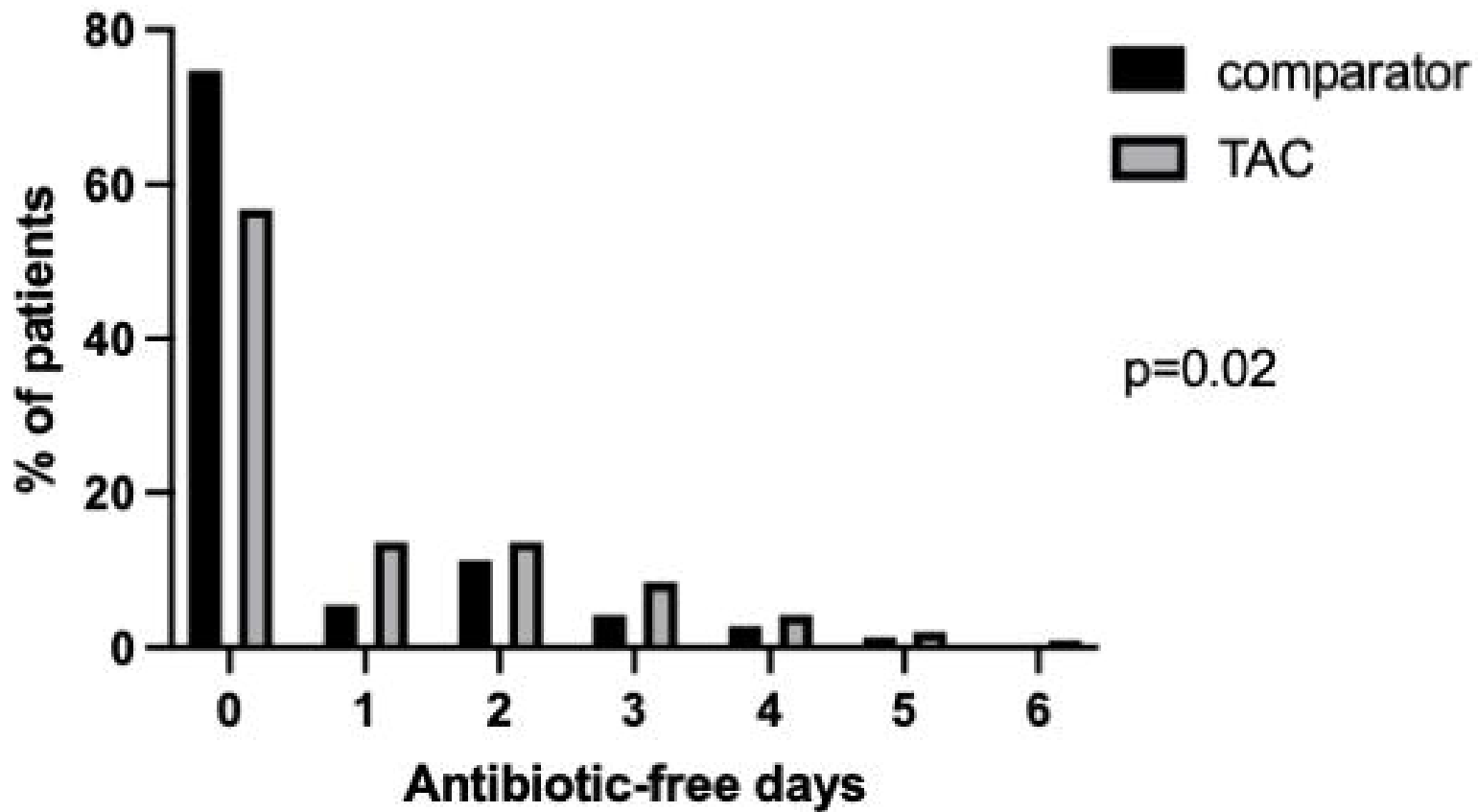
492 **bronchoscopy and lavage in the TAC and comparator cohorts.** Following first lavage

493 only for patients who had more than one BAL during ICU admission. Numbers in each

494 category and percentage shown below graph, p value by Mann-Whitney U test.

495





Comp (n)	53	4	8	3	2	1	0
TAC (n)	54	13	13	8	4	2	1