

1 **Trend analysis, modelling and impact assessment of**

2 **COVID-19 in Nepal**

3

4 Shital Bhandary^{1¶}, Srijan Lal Shrestha^{2¶}, Ram Prasad Khatiwada^{2¶}, Deep Narayan Shah^{3¶},
5 Nabin Narayan Munankarmi^{4¶}, Megha Raj Banjara⁵, Resham Thapa-Parajuli^{6¶}, Krishna Das
6 Manandhar⁷, Rameshwar Adhikari⁸, Reshma Tuladhar^{5*¶}

7

8 ¹. School of Public Health, Patan Academy of Health Sciences, Lalitpur, Nepal

9 ². Central Department of Statistics, Tribhuvan University, Kathmandu, Nepal

10 ³. Central Department of Environmental Science, Tribhuvan University, Kathmandu, Nepal

11 ⁴. Biotechnology Society Nepal (BSN), Bhaktapur, Nepal

12 ⁵. Central Department of Microbiology, Tribhuvan University, Kathmandu, Nepal

13 ⁶. Central Department of Economics, Tribhuvan University, Kathmandu, Nepal

14 ⁷. Central Department of Biotechnology, Tribhuvan University, Kathmandu, Nepal

15 ⁸. Research Center for Applied Science and Technology, Tribhuvan University, Kathmandu,
16 Nepal

17

18 *Corresponding author

19 Email: reshma.tuladhar@cdmi.tu.edu.np

20

21 [¶]These authors contributed equally to this work

22

23 **Abstract**

24 With continued global expansion of COVID-19 transmission and mounting threat of the disease,
25 the timely analysis of its trend in Nepal and forecasting the potential situation in the country has
26 been deemed necessary. We analyzed the trend, modelling and impact assessment of COVID-19
27 cases of Nepal from 23rd January 2020 to 30th April 2020 to portray the scenario of COVID-19
28 after the first phase of lockdown. Exponential smoothing state-space and autoregressive
29 integrated moving average (ARIMA) models were constructed to forecast the cases. Susceptible-
30 infectious-recovered (SIR) model was fit to estimate the basic reproduction number (R_0) of
31 COVID-19 in Nepal. There has been increase in the number of cases but the overall growth in
32 COVID-19 was not high. Statistical modelling has shown that COVID-19 cases may continue to
33 increase exponentially in Nepal. The basic reproduction number in Nepal being maintained at
34 low level of 1.08 for the period of 23rd January to 30th April 2020 is an indication of
35 effectiveness of lockdown in containing the COVID-19 spread. The models further suggest that
36 COVID-19 might persist until December 2020 with peak cases in August 2020. On the other
37 hand, basic reproduction number of 1.25 was computed for total cases reported for the 22nd
38 March to 30th April 2020 period implying that COVID-19 may remain for at least for a year in
39 the country. Thus, maintaining social distance and stay home policy with an implementation of
40 strict lockdown in COVID-19 affected district is highly recommended.

41

42 **Keywords:** Autoregressive integrated moving average, COVID-19, Doubling time, Exponential
43 smoothing, Susceptible-infectious-recovered model

44

45

46 **Introduction**

47 The ongoing Corona Virus Disease 2019 (COVID-19) caused by novel Severe Acute Respiratory
48 Syndrome Coronavirus 2 (SARS CoV-2) was reported to have emerged from Wuhan, Hubei,
49 China in late December 2019, where people in a seafood-wholesale wet market suffered from a
50 mysterious pneumonia [1]. World Health Organization (WHO) declared the outbreak as public
51 health emergency of international concern on 30th January 2020, announced a new name for this
52 disease as COVID-19 on 11th February 2020 and pandemic on 11th March 2020 [2].

53
54 With rapid spread in Europe, America and Asia, COVID-19 was confirmed globally in
55 3,090,445 people with 217,769 deaths by 30th April 2020 [3]. The highest infection and death toll
56 have been recorded in the USA followed by countries in Europe, Eastern Mediterranean, South-
57 East Asia, Western Pacific and least in Africa [4].

58
59 The first case of COVID-19 in Nepal reported in a 32 years old Nepalese male who was admitted
60 to hospital upon exhibiting mild symptoms, later discharged on 17th January 2020 after
61 improvement in clinical condition was a returnee from Wuhan City on 9th January 2020 [5]. On
62 24th January 2020 the infection was officially confirmed COVID-19 after reported positive from
63 WHO reference laboratory in Hong Kong [5, 6]. Later the second case was confirmed on 23rd
64 March 2020 in a 19 years old female who returned from France via Doha, Qatar [7]. On 24th
65 March 2020 the Government of Nepal implemented nationwide lockdown advising residents to
66 stay at home.

67

68 Until 13th April 2020, the cases in Nepal were reported from the people who recently returned
69 from abroad, and Indian nationals residing in Nepal where the latter case was in majority. The
70 first case of indigenous transmission confirmed on 4th April 2020 in a 34-year-old woman from
71 Kailali District was a relative of the infected patient travelled from India [7]. By the end of the
72 first phase of lock down of 28th April 2020, 54 cases have been confirmed with documentation of
73 no deaths [6]. COVID-19 has spread in 10 Districts of Nepal with Udayapur reported the
74 maximum number of 25 cases.

75
76 Considered as the standard laboratory test for the diagnosis of COVID-19 the cases were
77 confirmed by Reverse Transcription Real Time Polymerase Chain Reaction (RT-PCR) [8, 9].
78 Until 30th April 2020, a total of 12,011 RT-PCR tests and 46860 Rapid Diagnostic Test (RDT)
79 were performed in Nepal out of which 57 were tested positive. In consideration of numerous
80 COVID-19 cases being detected in Nepal it has been essential to let the Nepal Government be
81 prepared for the most predictable upcoming situation to tackle the COVID-19 pandemic. This
82 paper, therefore, assessed the descriptive and trend analysis on growth of cases, its doubling
83 time, statistical and epidemiological model and impacts.

84

85 **Materials and Methods**

86 **Data sources**

87 The secondary data from Ministry of Health and Population (MoHP), Nepal, Health Emergency
88 Operation Centre, and data from relevant websites related to COVID-19 in Nepal were analyzed.
89 Trend analysis was performed from daily compiled data of 102 days from the last week of
90 January 2020 till the end of April 2020. Major variables associated with the disease; such as

91 demographic variables of the cases, diagnostic tests including RT-PCR and RDT, number of
92 cumulative and daily cases as well as that of recovered, quarantined and isolated cases were
93 considered. Additionally, analysis of important variables such as cases as percent of PCR tests,
94 doubling time of COVID-19 cases for Nepal was weekly assessed and represented graphically.
95 Finally, different time points were used to develop predication models while impact assessments
96 have been analyzed using the whole data.

97

98 **Statistical analysis: ETS and ARIMA models**

99 The exponential smoothing state-space method (which basically comprises ‘Error, Trend, and
100 Seasonal’ components in smoothing procedure of an event under consideration; hence named
101 ETS model) which takes information into comprehensive consideration and ARIMA model [10]
102 were used to forecast COVID-19 cases for Nepal by fitting in R software using forecast package
103 [11]. We selected the best ETS model and best ARIMA model for 99 days official cumulative
104 COVID-19 cases from 23rd January to 30th April 2020 and forecasted the cases for next 14 days
105 (1st May – 14th May 2020). An attempt has been made in the direction of epidemiological
106 modelling through application of SIR model (see next section for detail) based upon the suitable
107 parameter values for Nepal.

108

109 **Mathematical analysis: SIR model**

110 We used SIR model, a compartmental model where population is divided into three
111 compartments: susceptible, infectious and recovered. We need two types of rates to move from

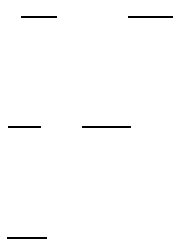
112 one compartment to other viz. rate of transmission (β) to move from Susceptible to Infectious
113 compartment and rate of recovery (γ) to move Infectious to Recovered compartment as follows



114

115

116 This type of model is a dynamic model as the population in these three compartments changes
117 with each unit of time and this can be modelled using differential equations. The simple SIR
118 model without vital dynamics i.e. births and deaths are modelled as follows:



119 Where, S, I, and R were stock of susceptible, infected and recovered population. Change in S, I
120 and R with respect to time was computed with initial value of $I = 1$ and $R = 0$ to represent the
121 first COVID-19 case of Nepal at 23rd January 2020. S was taken as 29 million, which is the
122 projected population of Nepal for April 2020 [12]. Two SIR models were fitted, first with basic
123 reproduction number (R_0) of 2.5 (global average of COVID-19) and 1.0 (to make COVID-19
124 endemic) in Nepal. To solve differential equations (i), (ii) and (iii), we used the Runge-Kutta
125 method available in the “deSolve” package [13] in R software version 3.5.2. We also fitted SIR
126 model for the official COVID-19 cases between 23rd January and 30th April as well as between
127 22nd March and 30th April 2020 and computed R_0 for these periods using Limited Memory-
128 Broyden-Fletcher-Goldfarb-Shanno (LM-BFGS) optimization algorithm in the R software. Since

129 second COVID-19 case was reported on 23rd March 2020, we also used period between 22nd
130 March and 30th April 2020 to check the effectiveness of the lockdown started from 24th March
131 2020 in Nepal. We created the change in the infected compartment for Nepal using these Ro
132 values and derived the time-based effect of COVID-19 cases for Nepal.

133

134 Further the aggregate macroeconomic policy responses adopted by Nepal [14], tourism related
135 employment data [15] and possible scenarios on tourism [16] was reviewed for assessing the
136 impact of COVID-19 created disaster on economics

137

138 **Results**

139 **Trend of the cases**

140 From 21st January 2020 till 30th of April 2020, a total of 57 COVID-19 cases have been
141 confirmed in Nepal. The increase in case was slow with only ten cases recorded between 21st
142 March and 10th April, 2020, but due to sudden sharp rise in new cases in some days, the trend of
143 daily new cases was found erratic and inconsistent (S1 File). The growth curve of the total cases
144 in Nepal resembles a logistic curve where the total number of cases and the curve for active
145 COVID-19 persons have also risen in similar manner but a dip in active cases have been
146 observed lately (S2 File). The number of recoveries has also risen significantly in the recent past
147 two weeks which is a positive sign.

148

149 In Nepal, male with age between 21- 30 years are found more infected. Highest number of
150 infected male populations may be related to the cases dominated from the male who lived in

151 Bhulke, Triyuga Municipality, Udayapur district and the person who came in contact with them.
152 Majority of infected belong to the people who entered Nepal from India while some of the
153 infected had a history of travel from other countries such as China, France, UAE, Belgium, UK
154 and Saudi Arabia [7].

155
156 From the trend graph of RT-PCR tests (S3 File) the percent of cases have rapidly decreased as
157 the number of tests increased in the month of February and has remained consistently low
158 between 0.2 to 0.5 % thereafter.

159

160 **Doubling time of COVID-19 cases in weekly data analysis**

161 Examination of doubling time of the COVID-19 cases in Nepal based upon weekly data analysis
162 showed that there has been an increase in doubling time steadily starting around third week of
163 March till second week of April from 3.5 to 14 days with a long span of time for doubling
164 duration initially from one reported case to two. Thereafter, it dropped sharply followed by
165 unexpected sudden rise in the cases during the third week of April. After that, it has again
166 increased to around 11 days showing a slowing down of trend of the infected persons. The
167 overall picture shows that there have been ups and downs in the doubling time of the COVID-19
168 cases in Nepal and is currently around 11 days (Fig 1)

169

170 **Fig 1. Doubling time of COVID-19 cases in Nepal (Based upon weekly data analysis from**
171 **22nd January 2020 to end of April 2020**

172

173 **Statistical Modelling of COVID-19 Cases of Nepal**

174 The best ETS state-space model was found to be ETS (M, A, N) for the data i.e. exponential
175 smoothing with **Multiplicative Error, Additive Trend and No Seasonality** model. This is
176 equivalent to Holt’s linear additive model (Hyndman and Athanasopolus 2018).

177
178 **Fig 2. ETS decomposition of cumulative COVID-19 cases of Nepal (23rd Jan. – 17th April**
179 **2020).**

180
181 Forcaded cumulative COVID-19 cases using ETS (M,A,N) model revealed that COVID-19 cases
182 were increasing at the rate of 2 cases per day in Nepal (Table 1). The 95% confidence interval of
183 the forecasts were very wide, which means that standard errors are high and precision of the
184 estimation is low. Thus, forecasted values may not coincide with the official reported values.

185
186 **Table 1. Forecasted cumulative COVID-19 cases using ETS (M,A,N) model, Nepal**

Date	Day	Forecast	Lo 80	Hi 80	Lo 95	Hi 95
1-May	100	58.81742	47.318412	70.31643	41.231205	76.40364
2-May	101	60.24833	44.396137	76.10053	36.00449	84.49218
3-May	102	61.67925	40.245795	83.1127	28.89961	94.45889
4-May	103	63.11016	35.07717	91.14316	20.2374	105.98293
5-May	104	64.54108	28.996946	100.08521	10.181018	118.90114
6-May	105	65.97199	22.051937	109.89205	-1.197936	133.14192
7-May	106	67.40291	14.253802	120.55201	-13.881634	148.68745
8-May	107	68.83382	5.591121	132.07652	-27.887543	165.55519
9-May	108	70.26474	-3.964673	144.49415	-43.259349	183.78882
10-May	109	71.69565	-14.456318	157.84762	-60.062415	203.45372
11-May	110	73.12657	-25.93925	172.19238	-78.381525	224.63466
12-May	111	74.55748	-38.480945	187.5959	-98.319873	247.43483
13-May	112	75.98839	-52.160735	204.13752	-119.998786	271.97557

201 14-May 113 77.41931 -67.069942 221.90856 -143.557931 298.39655

202 Note: The negative values in the table means zero cases.

203
 204 The cumulative COVID cases in Nepal revealed the increasing trend of COVID-19 cases with
 205 wide variation (Fig 3).

206
 207 **Fig 3. Cumulative COVID-19 cases of Nepal: Jan23 – 1 May 2020 using ETS (M,A,N)**
 208 **model showing increasing trend**

209
 210 The best ARIMA model for this 99-day data of Nepal is ARIMA (3,2,1). This means it required
 211 two times difference of the series first to make the data stationary followed by third order
 212 autoregressive filter and first order moving average filter to correct the autocorrelation and
 213 forecasting error in the data. Forecasted cumulative COVID-19 cases using ARIMA (3,2,1)
 214 model shows the forecasts obtained from this model for the next 14-day for Nepal (Table 2).

215
 216 COVID-19 cases increasing at 2 cases per day in Nepal (Table 2). The 95% confidence intervals
 217 were found realistic. However, the forecasts may not coincide with the official reported cases.

218
 219 **Table 2. Forecasted cumulative COVID-19 cases using ARIMA (3,2,1) model, Nepal**

220	Date	Day	Forecast	Lo 80	Hi 80	Lo 95	Hi 95
221	01-May	100	58.13008	55.92091	60.33926	54.75144	61.50873
222	02-May	101	59.77956	56.73407	62.82506	55.12188	64.43725
223	03-May	102	61.90513	58.17988	65.63039	56.20784	67.60242
224	04-May	103	62.92401	58.52157	67.32645	56.19105	69.65697
225	05-May	104	64.09565	58.49546	69.69583	55.53091	72.66038

226	06-May	105	65.56641	58.75999	72.37282	55.15689	75.97592
227	07-May	106	67.29525	59.33921	75.25128	55.12754	79.46296
228	08-May	107	68.63131	59.52688	77.73574	54.70728	82.55534
229	09-May	108	69.91791	59.47234	80.36349	53.94279	85.89304
230	10-May	109	71.3307	59.46664	83.19476	53.18619	89.47521
231	11-May	110	72.88073	59.58482	86.17663	52.5464	93.21505
232	12-May	111	74.3018	59.55531	89.0483	51.74899	96.85462
233	13-May	112	75.66426	59.37703	91.95149	50.75509	100.57344
234	14-May	113	77.06874	59.17249	94.96499	49.69879	104.43869

235

236

237 Forecast from ARIMA (3,2,1) model were lower than the official COVID-19 cases of Nepal
238 between 1st and 14th May 2020 (Fig 4). This means we need other approaches for modelling
239 COVID-19 cases in Nepal.

240

241 **Figure 4. Cumulative COVID-19 cases of Nepal: 23rd Jan. – 1st May 2020 using ARIMA**
242 **(3,2,1) model showing increasing trend**

243

244 **Mathematical Modelling of COVID-19 cases of Nepal**

245 **Scenario 1**

246 Beta = $1/2 = 0.5$ per person; Beta = $0.5/29,000,000 = 1.72 \times 10^{-8}$ for Nepal and Gamma = $1/5 =$
247 0.2 (reciprocal of average incubation period of COVID-19 cases) (Fig 5). This gave basic
248 reproduction number (Ro) as $0.5/0.2 = 2.5$, which is the average Ro around the world [17].

249

250 **Fig 5. SIR model with $\beta = 0.5$ and $\gamma = 0.2$ for $N=29,000,000$ of Nepal which gave basic**
251 **reproduction number $R_0=2.5$**

252
253 This SIR model shows that 6770893 persons will be infected around 60 days whereas 38,560
254 persons will be infected at 100 day since the first case appeared in Nepal.

255

256 **Scenario 2**

257 Beta = $1/5 = 0.2$ per person; Beta = $0.2/29,000,000 = 6.689 \times 10^{-9}$ for Nepal and Gamma = $1/5 =$
258 0.2 (reciprocal of average incubation period of COVID-19 cases) (Fig 6). This gives basic
259 reproduction number (R_0) as $0.2/0.2 = 1$.

260

261 **Fig 6. SIR model with $\beta= 0.5$ and $\gamma= 0.5$ for $N=29,000,000$ of Nepal giving basic**
262 **reproduction number $R_0=1$**

263

264 This SIR model shows that only 1 persons will be infected each day as the basic reproduction
265 number is 1.

266 **Scenario 3**

267 We used estimated $\beta = 0.5197019$ and $\gamma = 0.4802873$ obtained for official cases between 23rd
268 January and 30th April 2020 using LM-BFGS optimization in R software giving $R_0 = \beta/\gamma = 1.08$.
269 This SIR model revealed that there will be maximum of 532,627 cases if it continues with this
270 R_0 . (Fig 7).

271

272 Estimated β and γ obtained using LM-BFGS optimization in R software for official cases
273 reported between 22nd March and 30th April 2020 were 0.5553948 and 0.4446052 respectively
274 giving $R_0 = \beta/\gamma = 1.25$. This SIR model revealed that there will be maximum of
275 6197014 if it continues with this R_0 .

276

277 **Fig 7. SIR model with official cumulative COVID-19 cases of Nepal if $R_0=1.25$**

278

279 When $R_0=1$ was considered for the official data on 30th April 2020 then maximum cases will be
280 58.5462 and COVID-19 epidemic will be over by June 2020 at this R_0 in Nepal (Fig 8).

281

282 **Fig 8. Data driven SIR model fit with three R_0 values (1, 1.08 and 1.25) for Nepal**

283 SIR model based on official data revealed that COVID-19 cases will increase in Nepal with R_0
284 of 1.08 and the epidemic will be over only by December 2020 with peak of cases on August
285 2020 for this R_0 . On the other hand, COVID-19 epidemic will only be over around one year time
286 if R_0 continues as 1.25.

287

288 **Impact**

289 Tourism associated employment loss and its impact on livelihood is an external sector shock in
290 the Nepalese economy owing to COVID-19. Among the top 10 international tourist arrival in
291 Nepal: India, Germany, France, UK, and USA have profoundly affected economies due to
292 COVID-19 while Australia, South Korea, China and Thailand are already on the verge of
293 flattening the curve [18]. It indicates the decaying demand for international tourism in Nepal.
294 The “International-Tourism-Arrival elasticities to Employment” in the case of Nepalese tourism

295 are 0.54 for direct employment and 0.57 for the total-employment that includes indirect
296 employment also [19]. If the restrictions on global tourism remain till end of July, international
297 tourism arrival in Nepal will shrink by 58%. As the elasticity coefficient is 0.54, the direct
298 tourism-related jobs will reduce by 31%. It means the tourism sector will directly result in loss of
299 156,000 jobs. If the COVID-19 related restriction be extended till December, international
300 tourism will shrink by 78% and the direct tourism-related employment will reduce by 42%,
301 which totals 210,000 jobs loss. Similarly, out of 700,000 total tourism-related jobs, 231,000 to
302 311,000 jobs will disapper for several months which is a scary situation for a developing
303 economy like Nepal.

304

305 **Discussion**

306 The analysis of COVID-19 cases in Nepal provides an insight into situation till implementation
307 of first phase of lockdown and prediction of expected scenario thereafter. The data of the cases
308 were based on the results of test confirmed by RT-PCR. From the trend graph of cases as percent
309 of RT-PCR tests the percent of cases have rapidly decreased as the number of tests increased in
310 the month of February and has remained more or less constant between 0.2 to 0.5 % thereafter.
311 This is an indication of absence of significant rise in COVID-19 cases despite increase in the
312 tests substantially in the months of March-April in Nepal, although the number of tests may still
313 not be sufficient to cover large proportion of population in Nepal. The overall growth of COVID-
314 19 cases in Nepal is not high, which can be taken positively and credited to the lockdown
315 implemented by Nepal Government and awareness of the diseases through media along with the
316 preventive measures. Doubling time of COVID-19 cases along with incubation period of the

317 coronavirus are important variables in the spread of the epidemic. The incubation period of the
318 virus has been reported with certain amount of variability (2-14 days) with the median average
319 hovering around 5 days with possible outliers up to 27 days [20].

320
321 The overall picture shows that there has been ups and downs in the doubling time of the COVID-
322 19 cases in Nepal and is currently around 11 days (Fig 1) which is just above 10 days doubling
323 time of COVID-19 cases in India as reported by different news channels of India though the total
324 cases in Nepal are still negligible compared to that of India. Bhandary (2020) has stated that with
325 implementation of lockdown the doubling time increased from 5 days to 15 days [21].

326
327 Statistical modelling showed that COVID-19 cases may continue to increase exponentially in
328 Nepal. Forecasts from best ARIMA model (MAPE = 4.18) are found to be more precise than the
329 ETS exponential smoothing model (MAPE = 4.55). Forecasts from best ARIMA model will be a
330 valid estimate if clusters with more than 10 cases will be found there in the future too. This has
331 already happened once between 18th April and 1st May 2020 in Nepal and thus requires particular
332 attention of the concerned administrators and policy makers. However, it will not be valid if the
333 cases will be increased in higher rates in the country. ETS and ARIMA models produced
334 estimated values of COVID-19 cases for Nepal based upon the currently available official data.
335 Despite the possibility of questions on whether sufficient tests have been conducted for such
336 modelling, COVID-19 cases in Nepal has not risen sharply in high numbers and the total cases in
337 Nepal are still below 100 but expected to rise in coming days.

338

339 Compartmental SIR model on the other hand reveals that nearly seven million Nepali population
340 might be infected with average global basic reproduction number of 2.5 for COVID-19 cases and
341 maximum cases would have reached within 60 days of the first case, which fortunately did not
342 happen in the country. The total number of cases would have been only 1 if the basic
343 reproduction number remained at one in Nepal, which also did not happen as 30 cases were
344 reported by 17th April 2020 and 58 in 30th April 2020.

345
346 Basic reproduction number of Nepal was computed as 1.08 for 23rd Jan – 30th April 2020 period,
347 which means lockdown was working well to maintain low level of basic reproduction number in
348 the country. Further, it also revealed that COVID-19 will only be over by December 2020 with
349 peak cases in August 2020 with R_0 of 1.08. On the other hand, basic reproduction number of
350 1.25 was computed for total cases reported from 22nd March to 30th April 2020 period, which
351 means that COVID-19 did not increase exponentially but it will remain for at least a year in the
352 country. Thus, these results clearly suggests to continue the lockdown in the hotspots (heavily
353 affected areas) and slowly open the lockdown on least affected areas with social/physical
354 distancing and personal hygiene maintenance in Nepal.

355
356 This analysis we performed have been restricted to the lockdown implemented from 24th March
357 2020 till the end of April 2020 and not a final assessment yet considering that the spread of
358 disease could still be at the early stage in Nepal and calls for re-assessments periodically in
359 future as well till the pandemic phases out.

360

361 Considering the containment of outbreak lockdown is necessary, it will have huge impact in the
362 country's economy and the possible scenario of easing international travel has been
363 contemplated. Based on the [22], the best-case scenario assumes a gradual opening of
364 international borders and easing of travel restrictions in early July. It will witness reduction in
365 global tourism arrival likely by 58 per cent. The second scenario assuming the international
366 tourism arrival shrinkage by 70 per cent points is due to the restriction in situations goes until
367 early September. Relatively uncomfortable third scenario explains the easing of the restriction
368 sustains till December with arrival number reduction by 78 per cent. Considering these three
369 optimistic scenarios, we relate the international tourism arrival and employment plausibility in
370 Nepal.

371
372 The tourism sector faced a sharp downswing since the COVID-19 outbreak and with uncertainty
373 continued to dominate. The tourism sector will loose about US\$ 910 billion to US\$ 1.2 trillion
374 in export revenues from tourists. Most importantly, about 100 to 120 million direct
375 tourism related jobs are at stake.

376
377 The tourism sector contributes about 2% of the GDP and some 15-20% of the foreign reserve.
378 Furthermore, this sector is generating a significant volume of employment in Nepal. In Nepal,
379 there are about 500,000 direct and 700,000 total jobs in the tourism sector. Nepalese tourism
380 sector is one of the livelihood options to many marginal people. When the lockdown struck the
381 tourism sector, the livelihood issues arose that informal or unorganized job holders will
382 experience hardest hit.

383

384 The unprecedented lockdown also makes domestic tourism very unlikely, which means that
385 slowdown of global tourism is going to be the decisive factor influencing employment in the
386 tourism sector in Nepal.

387

388 **Conclusions**

389 The data based trends for COVID-19 epidemic in Nepal have been analyzed followed by
390 assessment of the outbreak impacts in comparison with existing models. The outcomes of the
391 research can be summarized as follows:

- 392 1. The total COVID-19 cases are increasing by following the logistic curve. However, there
393 has been a variation in the doubling time during the analysis period, which can be
394 attributed to the effect of lockdown imposed by the Government. The forecasts from best
395 ARIMA model may provide more precise and valid estimates if clusters with more than
396 10 cases are found in future.
- 397 2. As in compartmental SIR model, nearly 7 million people might get infected. With an
398 average global basic reproduction number of 2.5 for COVID-19 cases, maximum cases
399 would have reached within 65 days, which fortunately did not happen in the country. The
400 basic reproduction number in Nepal being maintained at low level of 1.08 for the period
401 between 23rd January and 30th April, 2020 is an indication of effectiveness of the
402 lockdown in containing the COVID-19 spread.
- 403 3. Further, the model has suggested that the COVID-19 will only be over by December
404 2020 with the peak cases in August 2020. On the other hand, basic reproduction number
405 of 1.25 was computed for total cases reported for 22nd March – 30th April 2020 period,
406 which implies that COVID-19 may persist at least for a year in the country.

407 Thus, the results so far obtained clearly recommend continuing the lockdown in the
408 hotspots (heavily affected areas) and gradually easing the lockdown in the least affected
409 areas with strict social/physical distancing and personal hygiene maintenance.

410 4. Since the COVID-19 is expected to destroy the Nepalese economy on many fronts a
411 robust impact study on economic impact of COVID-19 in Nepalese economy is
412 suggested.

413

414 **Acknowledgements**

415 We are thankful to Prof Dr. Dinesh Raj Bhujy, Academician, Nepal Academy of Science and
416 Technology for his encouragement. We acknowledge Ministry of Health and Population, Nepal
417 Government for the data on COVID-19.

418

419 **References**

420 1. Wu YC, Chen CS, Chan YJ. The outbreak of COVID-19: An overview. J Chin Med
421 Assoc. 2020; 83(3):217-220.

422 2. WHO. Naming the coronavirus disease (COVID-19) and the virus that causes it. 2020.
423 Available from: [https://www.who.int/emergencies/diseases/novel-coronavirus-](https://www.who.int/emergencies/diseases/novel-coronavirus-2019/technical-guidance/naming-the-coronavirus-disease-(covid-2019)-and-the-virus-that-causes-it)
424 [2019/technical-guidance/naming-the-coronavirus-disease-\(covid-2019\)-and-the-virus-](https://www.who.int/emergencies/diseases/novel-coronavirus-2019/technical-guidance/naming-the-coronavirus-disease-(covid-2019)-and-the-virus-that-causes-it)
425 [that-causes-it](https://www.who.int/emergencies/diseases/novel-coronavirus-2019/technical-guidance/naming-the-coronavirus-disease-(covid-2019)-and-the-virus-that-causes-it)

426 3. WHO. Coronavirus disease 2019 (COVID-19), Situation Report-101. 2020. Available
427 from: [https://www.who.int/docs/default-source/coronaviruse/situation-reports/20200430-](https://www.who.int/docs/default-source/coronaviruse/situation-reports/20200430-sitrep-101-covid-19.pdf?sfvrsn=2ba4e093_2)
428 [sitrep-101-covid-19.pdf?sfvrsn=2ba4e093_2](https://www.who.int/docs/default-source/coronaviruse/situation-reports/20200430-sitrep-101-covid-19.pdf?sfvrsn=2ba4e093_2)

- 429 4. WHO. Rolling updates on coronavirus disease (COVID-19). 2020. Available from:
430 [https://www.who.int/emergencies/diseases/novel-coronavirus-2019/events-as-they-](https://www.who.int/emergencies/diseases/novel-coronavirus-2019/events-as-they-happen)
431 happen
- 432 5. Bastola A, Sah R, Rodriguez-Morales AJ, Lal BK, Jha R, Ojha HC, et al. The first 2019
433 novel coronavirus case in Nepal. *Lancet Infect Dis.* 2020; 20(3):279-280.
- 434 6. MoHP. Coronaovirus disease (COVID-19) outbreak updates and resource material.
435 Health Emergency and Disaster Management Unit, Health Emergency Operation Center
436 2020. Available from: [https://heoc.moHP.gov.np/update-on-novel-corona-virus-COVID-](https://heoc.moHP.gov.np/update-on-novel-corona-virus-COVID-19)
437 19
- 438 7. Pun SB, Mandal S, Bhandari L, Jha S, Rajbhandari S, Mishra AK, et al. Understanding
439 COVID-19 in Nepal. *J Nepal Health Res Counc.* 2020; 18(1):126-127.
- 440 8. Paudel S, Dangal G, Chalise A, Bhandari TR, Dangal O. The Coronavirus Pandemic:
441 What Does the Evidence Show? *J Nepal Health Res Counc.* 2020; 18(1):1-9.
- 442 9. Yip CC, Ho CC, Chan JF, To KK, Chan HS, Wong SC, et al. Development of a Novel,
443 Genome Subtraction-Derived, SARS-CoV-2-Specific COVID-19-nsp2 Real-Time RT-
444 PCR Assay and Its Evaluation Using Clinical Specimens. *Int J Mol Sci.* 2020;
445 21(7):e2574. <http://doi:2510.3390/ijms21072574>.
- 446 10. Hyndman R, Athanasopoulos G: Forecasting: principles and practice. In: OTexts. 2nd
447 edition edn: Melbourne, Australia; 2018.
- 448 11. Hyndman R, Athanasopoulos G, Caceres G, Chhay L, O'Hara-Wild M, Petropoulos F, et
449 al. Package forecast: Forecasting functions for time series and linear models. 2020.
450 Available from: <https://github.com/robjhyndman/forecast>
- 451 12. WPP. World Population Prospects. 2020. Available from: <https://population.un.org/wpp/>

- 452 13. Soetaert K, Petzoldt T, Setzer RW. Solving differential equations in R: package deSolve.
453 Journal of Statistical Software. 2010; 33(9):1-25.
- 454 14. IMF. Policy Response to COVID-19. Policy Tracker. 2020. Available from:
455 [https://www.imf.org/en/Topics/imf-and-COVID19/Policy-Responses-to-COVID-](https://www.imf.org/en/Topics/imf-and-COVID19/Policy-Responses-to-COVID-19?fbclid=IwAR3nM0PE75qzr-WajzLLLddfm9dSSYIYJ_lfzbObGLqJILZdfmhhsb-QIkI#N)
456 [19?fbclid=IwAR3nM0PE75qzr-WajzLLLddfm9dSSYIYJ_lfzbObGLqJILZdfmhhsb-](https://www.imf.org/en/Topics/imf-and-COVID19/Policy-Responses-to-COVID-19?fbclid=IwAR3nM0PE75qzr-WajzLLLddfm9dSSYIYJ_lfzbObGLqJILZdfmhhsb-QIkI#N)
457 [QIkI#N](https://www.imf.org/en/Topics/imf-and-COVID19/Policy-Responses-to-COVID-19?fbclid=IwAR3nM0PE75qzr-WajzLLLddfm9dSSYIYJ_lfzbObGLqJILZdfmhhsb-QIkI#N)
- 458 15. WTTC. Economic impact of tourisms. World travel and tourism corporation. 2020.
459 Available from: <https://wttc.org/Research/Economic-Impact>
- 460 16. UNWTO Report: International tourist number could fall. 2020. Available from:
461 [https://www.unwto.org/news/COVID-19-international-tourist-numbers-could-fall-60-80-](https://www.unwto.org/news/COVID-19-international-tourist-numbers-could-fall-60-80-in-2020)
462 [in 2020](https://www.unwto.org/news/COVID-19-international-tourist-numbers-could-fall-60-80-in-2020)
- 463 17. Liu Y, Gayle AA, Wilder-Smith A, Rocklov J. The reproductive number of COVID-19 is
464 higher compared to SARS coronavirus. J Travel Med. 2020; 27(2):taaa021. doi:
465 [10.1093/jtm/taaa021](https://doi.org/10.1093/jtm/taaa021).
- 466 18. Roser M, Ritchie H. Our World in Data: Coronavirus Pandemic (COVID-19). 2020.
467 Available from: <https://ourworldindata.org/the-covid-19-pandemic-slide-deck>
- 468 19. Thapa-Parajuli R, Paudel R. Tourism Sector Employment Elasticity in Nepal: An
469 Analysis. 2020.
- 470 20. Worldometer. 2020. Available from :
471 <https://www.worldometers.info/coronavirus/coronavirus-incubation-period/>
- 472 21. Bhandary S. Effectiveness of lockdown as COVID-19 intervention: official and
473 computed cases in Nepal. Journal of Patan Academy of Health Sciences. 2020; 7(1):37-
474 41.

475 22. UNWTO Report. International Tourist Number Could Fall. 2020. Available from:
476 <https://www.unwto.org/news/covid-19-international-tourist-numbers-could-fall-60-80-in->
477 2020

478

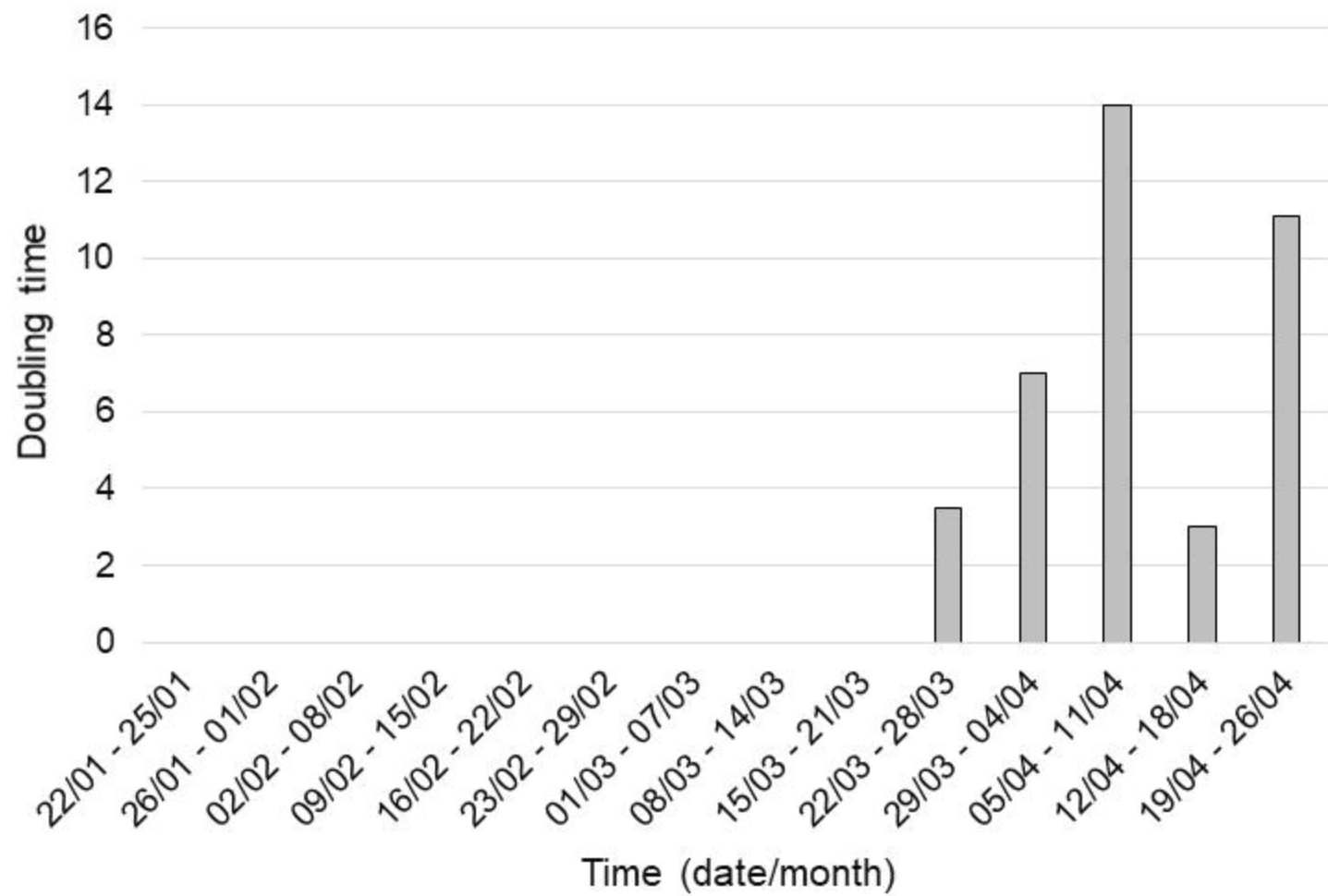
479 **Supporting information**

480 **S1 Fig. Trend of daily new cases and recovered cases of COVID-19 in Nepal**

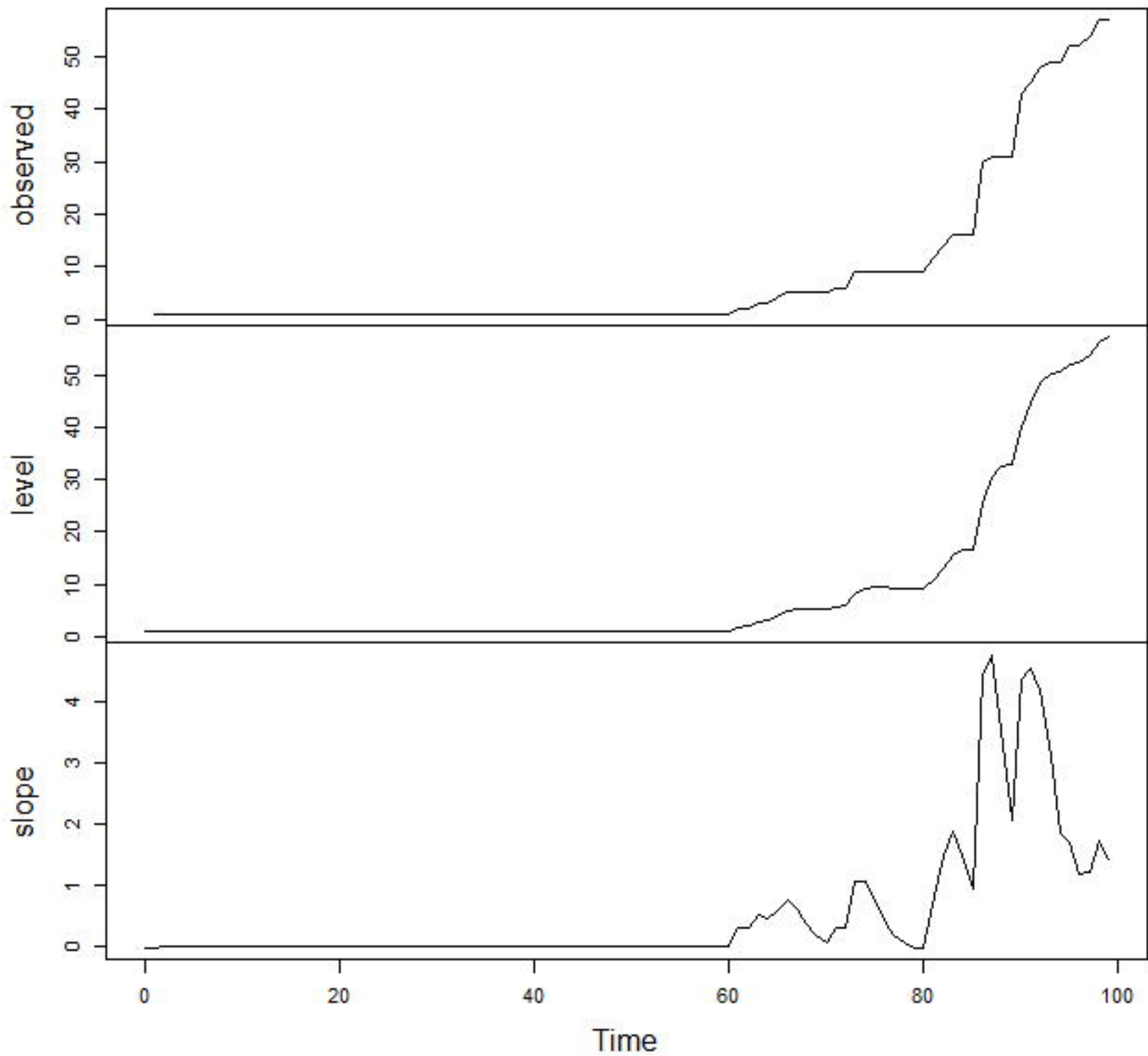
481 **S2 Fig. Trend of active, recovered and total number of COVID-19 cases with time**

482 **S3 Fig. Number of cases as percentage of total PCR tests conducted on the samples**

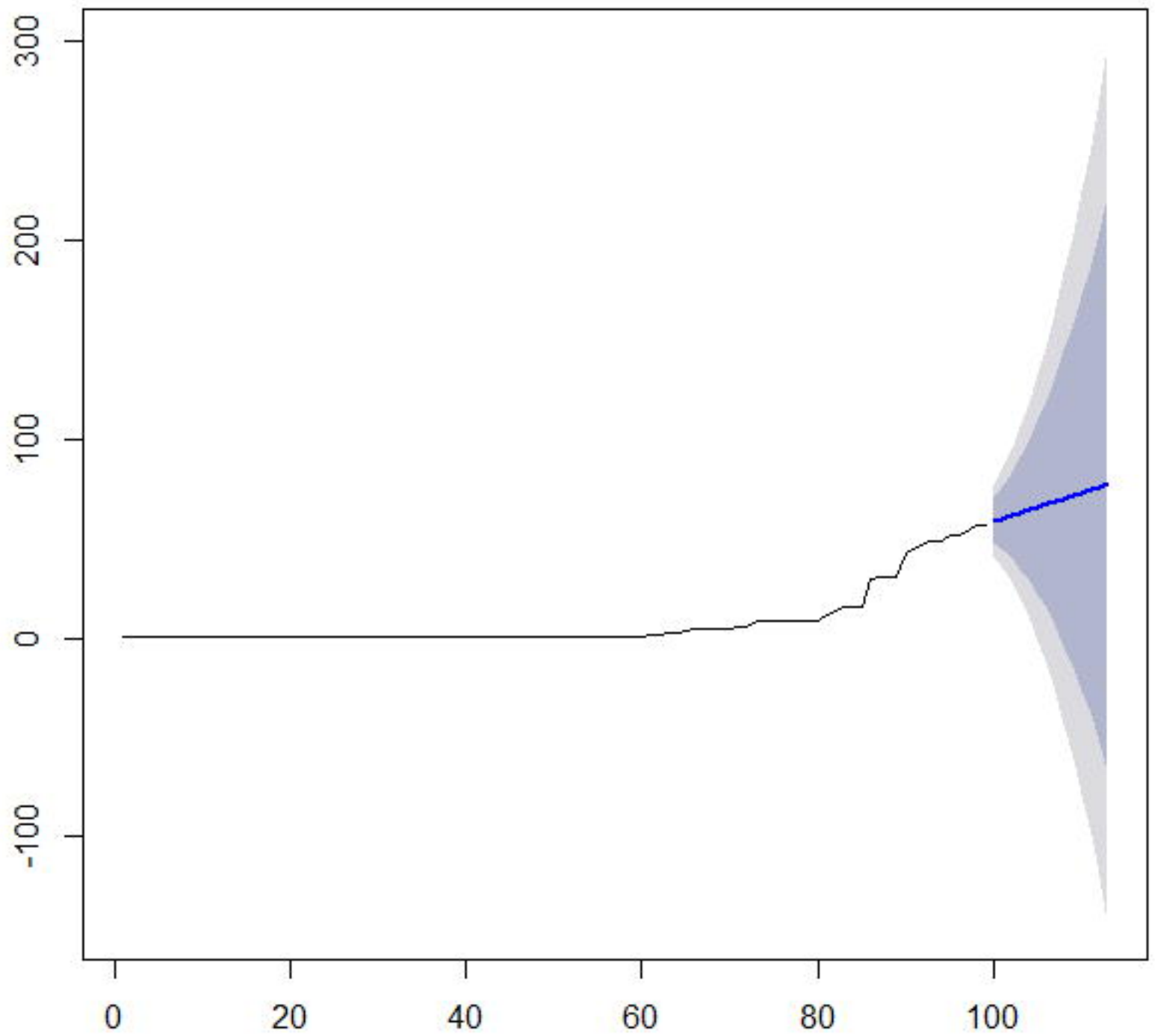
483 **from COVID-19 suspected**



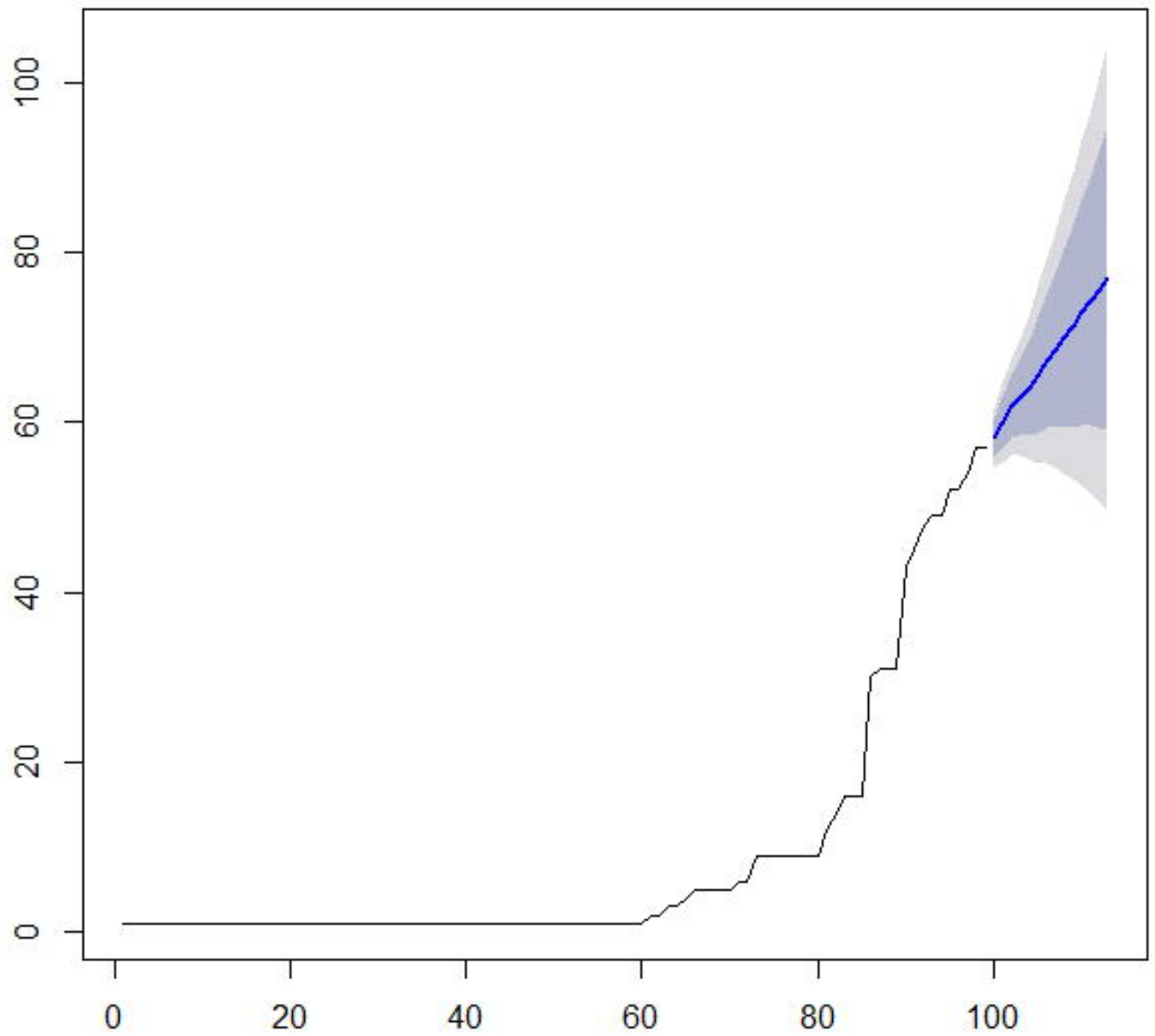
Decomposition by ETS(M,A,N) method



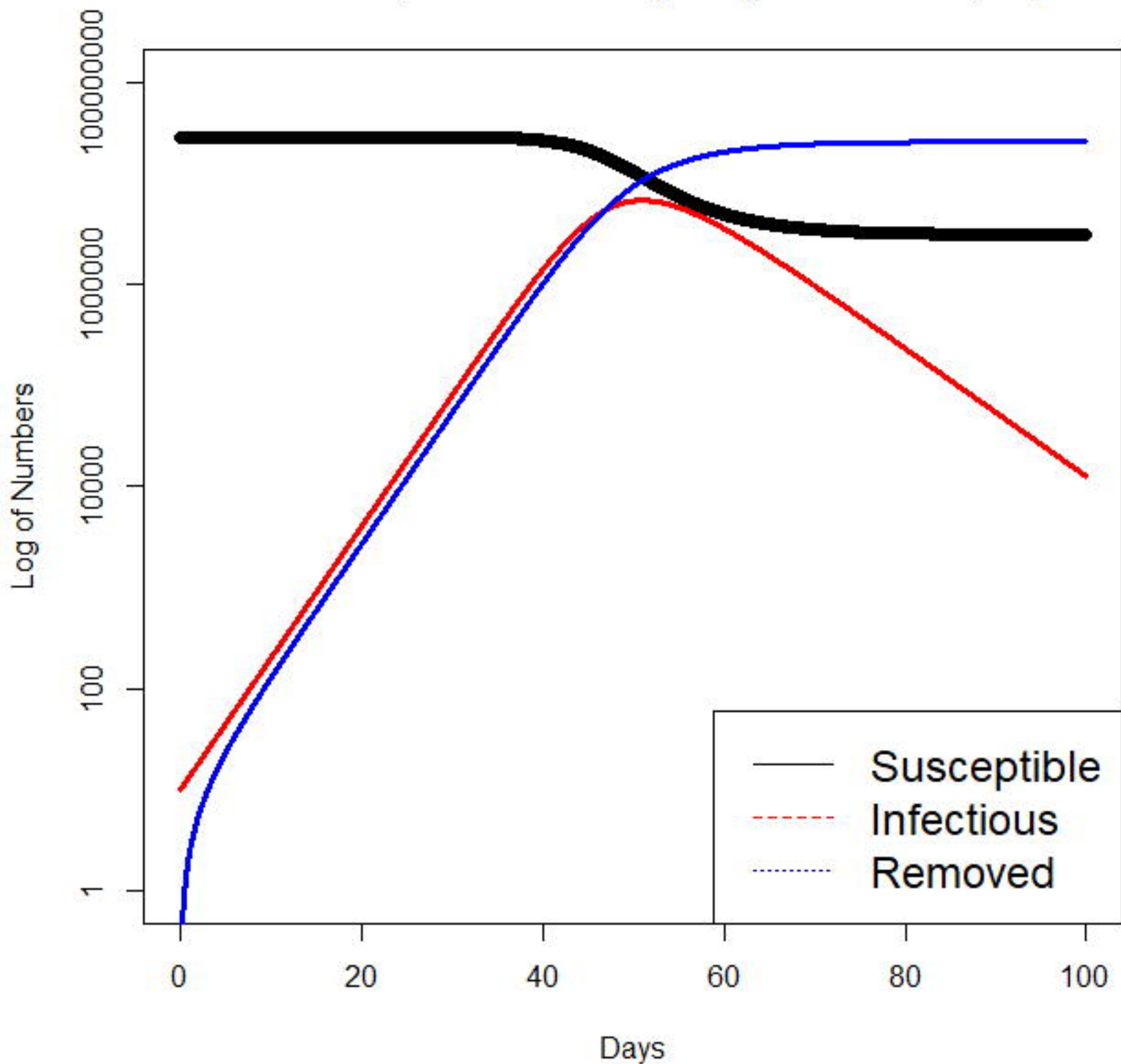
Forecasts from ETS(M,A,N)



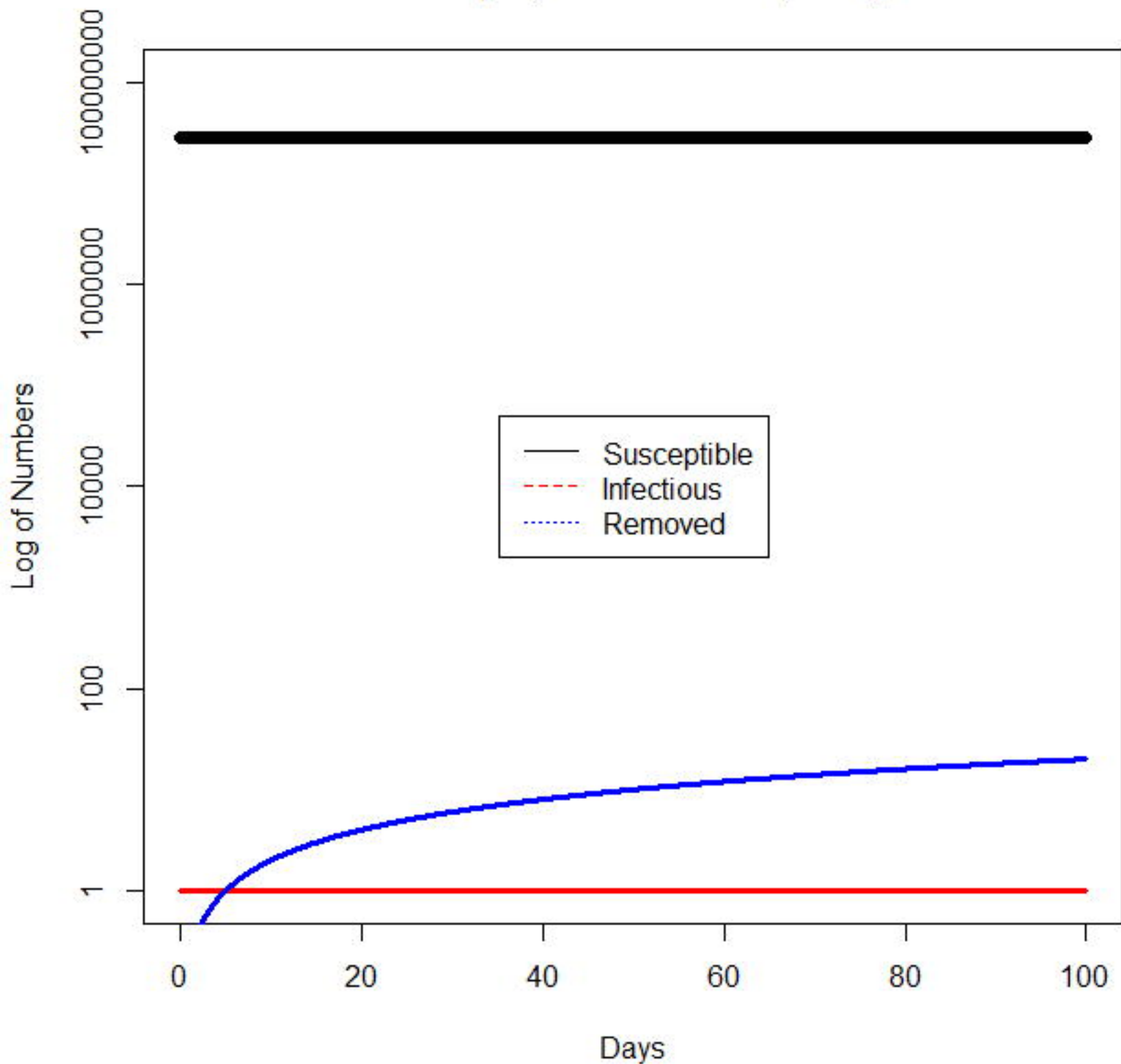
Forecasts from ARIMA(3,2,1)



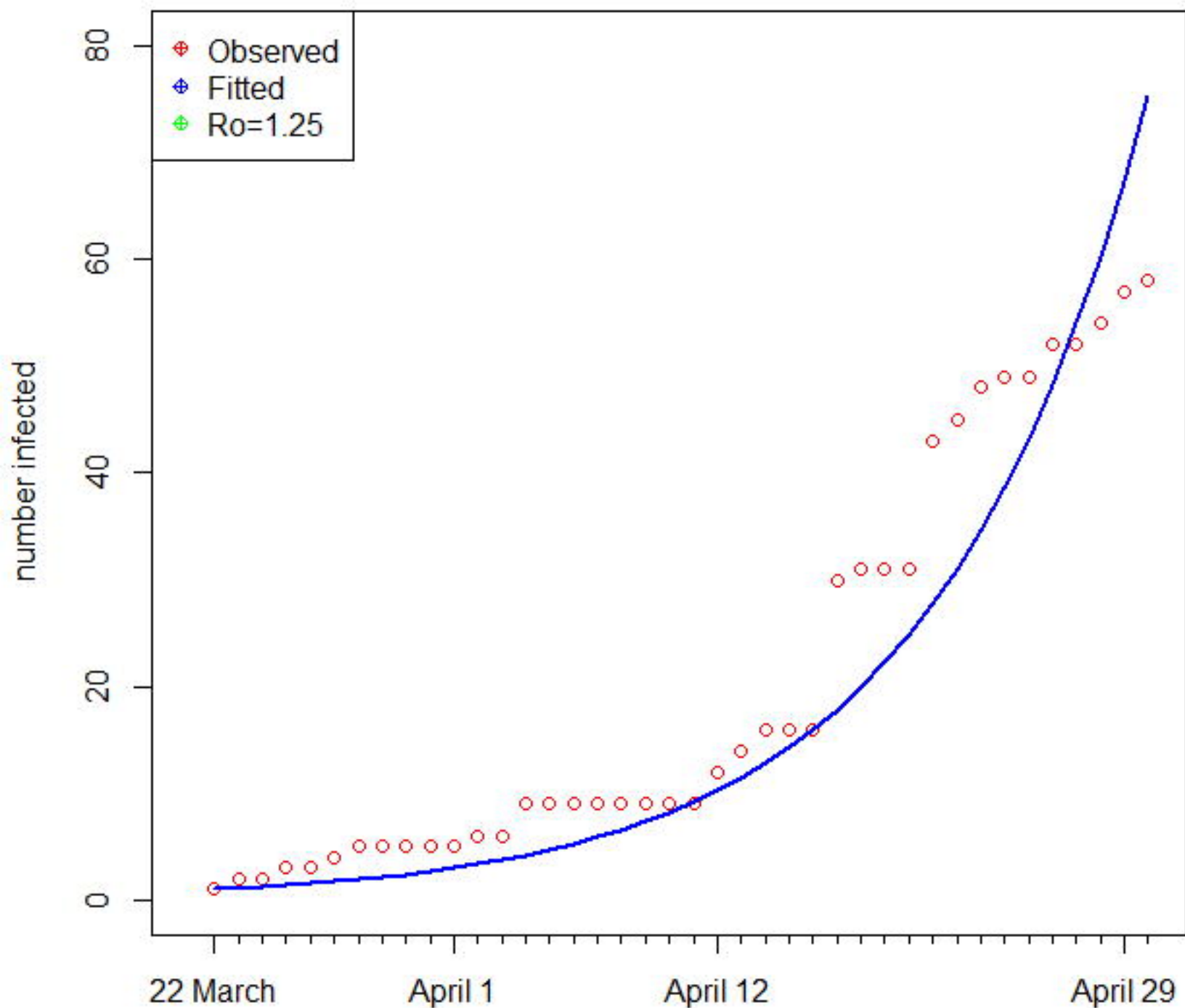
SIR Model Fit, N = 29 million (2020) and $R_0 = 2.5$, Nepal



SIR Model Fit of Nepal, N = 29 million (2020) and $R_0 = 1.0$



Infected in Nepal (SIR Model Fit)



Infected in Nepal (Data driven SIR Fit for Ro Values)

