

## Important declarations

Please remove this info from manuscript text if it is also present there.

### Associated Data

---

**Data supplied by the author:**

Raw data are available in the Supplemental Files. PRISMA checklist S1 File. COVID-19 or SARS-CoV-2 publications with at least one researcher with Latin American affiliation. S2 File. Genome sequences from Latin American SARS-CoV-2 strains collected in the GISAID database.

### Required Statements

---

**Competing Interest statement:**

The authors declare that they have no competing interests.

**Funding statement:**

The authors received no funding for this work.

# Contributions of Latin American researchers in the understanding the novel coronavirus outbreak: A literature review

**Karen Y Fiesco-Sepúlveda** <sup>Equal first author, 1</sup>, **Luis Miguel Serrano-Bermúdez** <sup>Corresp. Equal first author, 2</sup>

<sup>1</sup> Epidemiology Program, Faculty of Health Sciences, Universidad Surcolombiana, Neiva, Colombia

<sup>2</sup> Bioprocesses and Bioprospecting Group, Universidad Nacional de Colombia, Bogotá D.C., Colombia

Corresponding Author: Luis Miguel Serrano-Bermúdez  
Email address: lmserranob@unal.edu.co

This paper aimed to give the visibility of Latin American researchers' contributions to the comprehension of COVID-19; our method was a literature review. Currently, the world is facing a health and socioeconomic crisis caused by the novel coronavirus, SARS-CoV-2, and its disease COVID-19. Therefore, in less than four months, researchers have published a significant number of articles related to this novel virus. For instance, a search focused on the Scopus database on April 10, 2020, showed 1224 documents published by authors with 1797 affiliations from 80 countries. 25.4%, 24.0%, and 12.6% of these national affiliations were from China, Europe, and the USA, respectively, making these regions leaders in COVID-19 research. In the case of Latin America, on April 10, 2020, we searched different databases, such as Scopus, PubMed, and Web of Science, finding that the contribution of this region was  $2.7 \pm 0.6\%$  of the total publications found. In other words, we found 153 publications related to COVID-19 with at least one Latin American researcher. We summarized and processed the information from these 153 publications, finding active participation in topics like medical, social, and environmental considerations, bioinformatics, and epidemiology.

1       **Contributions of Latin American researchers in the**  
2       **understanding the novel coronavirus outbreak: A**  
3                       **literature review**

4

5

6 Karen Y Fiesco-Sepúlveda<sup>1</sup>, Luis Miguel Serrano-Bermúdez<sup>2</sup>

7 <sup>1</sup> Epidemiology Program, Faculty of Health Sciences, Universidad Surcolombiana, Neiva,  
8 Colombia.

9 <sup>2</sup> Bioprocesses and Bioprospecting Group, Universidad Nacional de Colombia, Bogotá D.C.,  
10 Colombia.

11

12 Corresponding Author:

13 Luis Miguel Serrano-Bermúdez

14 Carrera 30 No. 45-03, Bogotá D.C., 11001, Colombia

15 Email address: [lserranob@unal.edu.co](mailto:lserranob@unal.edu.co) (LMSB)

## 16 **Abstract**

17 This paper aimed to give the visibility of Latin American researchers' contributions to the  
18 comprehension of COVID-19; our method was a literature review. Currently, the world is facing  
19 a health and socioeconomic crisis caused by the novel coronavirus, SARS-CoV-2, and its disease  
20 COVID-19. Therefore, in less than four months, researchers have published a significant number  
21 of articles related to this novel virus. For instance, a search focused on the Scopus database on  
22 April 10, 2020, showed 1224 documents published by authors with 1797 affiliations from 80  
23 countries. 25.4%, 24.0%, and 12.6% of these national affiliations were from China, Europe, and  
24 the USA, respectively, making these regions leaders in COVID-19 research. In the case of Latin  
25 America, on April 10, 2020, we searched different databases, such as Scopus, PubMed, and Web  
26 of Science, finding that the contribution of this region was  $2.7 \pm 0.6\%$  of the total publications  
27 found. In other words, we found 153 publications related to COVID-19 with at least one Latin  
28 American researcher. We summarized and processed the information from these 153  
29 publications, finding active participation in topics like medical, social, and environmental  
30 considerations, bioinformatics, and epidemiology.

31

## 32 **1. Introduction**

33 Severe acute respiratory syndrome coronavirus 2 (SARS-CoV-2) is a novel virus that mainly  
34 affects the respiratory system through the new coronavirus disease 2019 (COVID-19) (Ciotti *et*  
35 *al.*, 2020). COVID-19 has spread quickly; thus, on March 11, 2020, the World Health  
36 Organization (WHO) declared it as a pandemic (Hussain *et al.*, 2020). Since the first cases  
37 reported in Wuhan, China, in December 2019, until April 20, 2020, SARS-CoV-2 has affected

38 most countries in the world, with nearly 2.5 million people infected and 170,000 deaths (Johns  
39 Hopkins University, 2020). Latin America is no stranger to this reality, totaling approximately  
40 100,000 cases and 5,500 deaths, as shown in Table 1 (Johns Hopkins University, 2020).  
41 However, these data may be lower than actual numbers because the number of tests per million  
42 inhabitants remains low, which is caused by factors such as the limited availability of tests and  
43 the difficulty of monitoring people without facilities like indigenous populations, vulnerable  
44 groups, and Venezuelan refugees (Oliveira *et al.*, 2020; Torres & Sacoto, 2020).  
45 SARS-CoV-2, as SARS and MERS, belongs to the family *Coronaviridae*, has a zoonotic origin,  
46 and can remain on some surfaces for considerable periods (Ciotti *et al.*, 2020; van Doremalen *et*  
47 *al.*, 2020). Additionally, COVID-19 is a new disease with no yet vaccines or targeted drugs,  
48 making the containment of the outbreak difficult (Carnero Contentti & Correa, 2020). Therefore,  
49 the recommendation is the self-isolation to reduce COVID-19 spreading, especially in more  
50 susceptible people as older adults or patients with comorbidities (Diaz-Quijano *et al.*, 2020).  
51 More general aspects of the current outbreak have been published in review articles according to  
52 available information in the moment of publication. These reviews include other zoonotic  
53 diseases (such as SARS and MERS), outbreak chronology, virus characteristics, zoonotic links,  
54 transmission, diagnosis, disease characteristics, therapeutics & treatments, prevention,  
55 epidemiological surveillance, and control (Ciotti *et al.*, 2020; Cupertino *et al.*, 2020; Huang *et*  
56 *al.*, 2020; Millán-Oñate *et al.*, 2020; Palacios Cruz *et al.*, 2020; Rodriguez-Morales *et al.*, 2020a;  
57 Sifuentes-Rodriguez & Palacios-Reyes, 2020; Siordia, 2020; Wu *et al.*, 2020; Zhu *et al.*, 2020).  
58 In the past, during SARS and MERS outbreaks, research focused on coronaviruses increased  
59 significantly, which was led by researchers from China and the USA (Bonilla-Aldana *et al.*,  
60 2020b). This new outbreak is not an exception because thousands of articles have been published

61 in less than four months, where China, Europe, and the USA are leaders in the number of  
62 publications. In the case of Latin America, it is a region with an increasingly high contribution to  
63 science; thus, our question was, what are the contributions of Latin American researchers in  
64 understanding this novel coronavirus outbreak? Therefore, our purpose in this review was to  
65 highlight the contributions of this region in the comprehension of SARS-CoV-2 and COVID-19.  
66 The literature survey consisted of revising and summarizing publications with Latin American  
67 researchers. Keeping in mind that several researchers from this region work together with  
68 researchers from other continents, we included publications submitted by these types of  
69 international research groups. Hence, the relevance of this review focused on finding the  
70 research interests of Latin American researchers according to global and regional priorities.

71

## 72 **2. Survey methodology**

### 73 **2.1. Search strategy**

74 We performed the present review following the PRISMA guidelines. The search was done on  
75 April 10, 2020, using Scopus, Web of Science, PubMed, ScienceDirect, Wiley, Sage, LILACS,  
76 and SciELO databases because they are the main academic literature collections globally and  
77 regionally. Other databases like Springer Link were excluded because they do not allow to  
78 filtrate by affiliation. The search equation used had ("COVID 19" OR "COVID-19" OR "SARS-  
79 CoV-2" OR "SARS CoV 2" OR "SARS-CoV 2" OR "2019-nCoV" OR "2019 nCoV" OR  
80 "nCoV-2019" OR "nCoV 2019" OR "hCoV-19" OR "hCoV 19") in all fields and (Argentina OR  
81 Bolivia OR Brasil OR Brazil OR Chile OR Colombia OR Cuba OR Ecuador OR Salvador OR  
82 Guatemala OR Haiti OR Honduras OR Mexico OR Nicaragua OR Panama OR Paraguay OR

83 Peru OR Dominicana OR Uruguay OR Venezuela) in affiliation field. We did not consider  
84 preprints during the search stage. No interfaces were used in the present literature review.

85

## 86 **2.2. Article selection and data extraction**

87 After the search stage, both reviewers (KYFS and LMSB) removed all duplicated publications,  
88 which included a manual revision because some publications were simultaneously in English,  
89 Spanish, or Portuguese. Later, we performed a second manual revision to verify that all  
90 publications had at least one researcher with a Latin American affiliation. After these two  
91 manual revisions, we did not exclude more publications, and final publications were included in  
92 the qualitative synthesis. Before the qualitative synthesis, we collected the following  
93 information, which was used in the bibliometric analysis: title, authors, journal, DOI, type of  
94 publication, national affiliation of Latin American researchers, and topic of publication.

95

## 96 **2.3. Data analysis**

97 We summarized information from the collected publications according to the type of publication,  
98 the topic of publication, and the national affiliation in the “Bibliometric analysis” section. The  
99 first purpose of this section was to quantify contributions of the region in the global context, and  
100 the contribution by country in the regional context. The second purpose was to classify the  
101 publications by topic and type, which allowed us to organize the next sections of this literature  
102 review. In the following two sections, “Phylogenetic and molecular understanding” and “medical  
103 contributions”, we compiled information from research articles and reviews. The last section,  
104 called “Additional concerns”, was included to highlight contributions not covered in the two

105 main topics, but discussed in the remaining publications (commentaries, letters to the editor,  
106 editorials, communications, perspectives, points of view, and contributions).

107

### 108 **3. Bibliometric analysis**

109 Following the PRISMA guidelines shown in Figure 1, we found 301 publications in the  
110 considered databases; this number decreased to 161 after excluding duplicates. Later, we  
111 manually excluded eight additional publications due to affiliations from New Mexico (1) and  
112 Pennsylvania (7) were confused with Mexico and Panama, respectively. Therefore, this  
113 qualitative analysis included 153 publications, which contained at least one researcher with Latin  
114 American affiliation (see Supplementary S1 file for complete information of publications). We  
115 highlight that several publications were not exclusively submitted by Latin American  
116 researchers, some of which are part of research groups together with North American, European,  
117 or Asian researchers. Figure 2 presents the classification of publications by type, where most of  
118 them were letters to the editor or commentaries, editorials, and research articles.

119

120 Regardless of the number of authors from the same country but different institutions, among all  
121 publications, we highlight that 15 of them were submitted by groups in which there were  
122 researchers from at least two Latin American countries. Therefore, these publications were  
123 counted for each nation involved; thus, these 15 publications have 56 national affiliations. Most  
124 of these publications were due to the Latin American Network of Coronavirus Disease 2019-  
125 COVID-19 Research (LANCOVID-19), which was created to integrate the region around this  
126 new outbreak (Rodriguez-Morales *et al.*, 2020d). The remaining 138 publications were submitted  
127 by groups in which there were researchers from a single Latin American country. Therefore,



128 these publications were counted once for the country, disregarding whether they were submitted  
129 by one or more researchers with the same national affiliation; in other words, these 138  
130 publications have 138 national affiliations. In summary, the 153 publications accounted for 194  
131 national affiliations. Figure 3 shows publications by national affiliation, where Brazil had the  
132 highest contribution with 80 publications, followed by Colombia, Mexico, and Argentina, with  
133 36, 18, and 14 publications, respectively. Conversely, the following Latin American countries  
134 had no publications: Cuba, Costa Rica, Dominican Republic, El Salvador, Guatemala, Haiti, and  
135 Nicaragua.

136 We did the same search without the affiliation field restriction. We found 1224, 615, 3538, 1841,  
137 665, 48, 2627, and 34 publications in Scopus, Web of Science, PubMed, ScienceDirect, Wiley,  
138 Sage, LILACS, and SciELO databases, respectively. Hence, publications with Latin American  
139 researchers in these databases, Figure 1, represent 2.9%, 3.1%, 2.8%, 3.3%, 2.9%, 2.1%, 1.6%,  
140 and 76.5% of all publications, respectively. Excluding Scielo, which is a Latin American  
141 database, the contribution of the region was  $2.7 \pm 0.6\%$ . This low value could be associated with  
142 the science gap (gap in science funding, technology, facilities) between the region and the  
143 developed countries. However, other possibilities are the late coronavirus appearance in the  
144 region (between February and March), as opposed to the initial outbreak (December 2019) and  
145 the number of Latin American cases (nearly 4% world total), as shown in Table 1.

146 Finally, Figure 4 shows the classification of publications by topic, which were medical  
147 considerations (surgery recommendations, diagnosis, comorbidities, medical guidelines,  
148 dentistry considerations, among others), social and environmental considerations, general aspects  
149 (zoonotic links, spreading, origin, disease, surveillance, among others), epidemiological  
150 analyses, bioinformatics (molecular and phylogenetic analyses, molecular simulations, genetic

151 annotations, among others), mental health considerations, search for potential treatments, and  
152 meta-analyses. Excluding the general aspects, the remaining topics are shown in the following  
153 sections.

154

#### 155 **4. Phylogenetic and molecular understanding**

156 The researcher with the highest number of research articles was Ph.D. Marta Giovanetti, who has  
157 contributed to SARS-CoV-2 understanding through bioinformatic analyses (Angeletti *et al.*,  
158 2020; Benvenuto *et al.*, 2020a; Benvenuto *et al.*, 2020b; Benvenuto *et al.*, 2020c; Benvenuto *et*  
159 *al.*, 2020d; Cleemput *et al.*, 2020; Giovanetti *et al.*, 2020a; Giovanetti *et al.*, 2020b). Her first  
160 research focused on a phylogenetic analysis of SARS-CoV-2, finding that among the viruses  
161 compared, this virus is closely related to bat-SL-CoVZXC21 (GenBank ID MG772934.1), while  
162 the least related is MERS (Benvenuto *et al.*, 2020b). However, Cardenas-Conejo *et al.* (2020)  
163 proposed that SARS-CoV-2 has a closer relation to bat-SL-CoV-RaTG13 (GenBank ID  
164 MN996532.1), then, authors suggested first that SARS-CoV-2 is unlikely to come directly from  
165 pangolin viruses, and second, that if SARS-CoV-2 has a recombinant origin, this recombination  
166 did not happen in ORF1ab. Nevertheless, both Benvenuto *et al.* (2020b) and Cardenas-Conejo *et*  
167 *al.* (2020) concluded that the novel virus could come from a bat SARS-like coronavirus isolate,  
168 which is in agreement with reports from the GISAID database (Hadfield *et al.*, 2018; Sagulenko  
169 *et al.*, 2018).

170 Subsequent studies of the Giovanetti group found differences in the superficial spike protein S of  
171 SARS-CoV-2 through structural analyses, which could give a higher ability to infect humans  
172 when compared to other coronaviruses (Benvenuto *et al.*, 2020b). This ability could be attributed  
173 to two mutations found in the non-structural protein 2 (nsp2) and nsp3, both originating from a

174 possible positive pressure (Angeletti *et al.*, 2020). Similarly, evaluating *in silico* molecular  
175 interactions between the human angiotensin-converting enzyme 2 (ACE2) receptor and the spike  
176 protein of some coronaviruses, Ortega *et al.* (2020a) found that SARS-CoV-2 has some modified  
177 residues. Such residues could improve the recognition and interaction with the ACE2 receptor,  
178 providing SARS-CoV-2 with a higher infectiousness, which is in agreement with another study  
179 published simultaneously (Andersen *et al.*, 2020). Likewise, performing *in silico* molecular  
180 interactions, Ortega *et al.* (2020b) evaluated the interaction between the protease of SARS-CoV-  
181 2 and some protease inhibitors as a strategy to control COVID-19 infection. The most energetic  
182 interactions predicted were using Saquinavir, Lopinavir, and Tipranavir, which are treatments for  
183 HIV patients; however, experimentation is required to validate these simulations.

184 In a later study, the Giovanetti group analyzed SARS-CoV-2 mutations through time, finding  
185 two variations located in nsp6 and ORF10, which could be caused by a positive selective  
186 pressure, leading to a lower protein structure stability and possibly (awaiting for evidence) a  
187 higher virulence (Benvenuto *et al.*, 2020a). Cardenas-Conejo *et al.* (2020) similarly detected  
188 variations in nsp6 and eight deleted amino acids in nsp1 from some Japanese virus strains.

189 Although these *in silico* studies are a first approach and require experimental validation  
190 (Ciccozzi *et al.*, 2020), they could also be a first step to aid in identifying treatments or vaccines.

191 Lastly, Giovanetti simultaneously contributed to another research group to develop and validate  
192 an open-access tool, called the Genome Detective Coronavirus Typing Tool, which analyzes  
193 SARS-CoV-2 genomes to generate new knowledge of COVID-19 outbreak (Cleemput *et al.*,  
194 2020).

195 Concerning the sequencing of SARS-CoV-2 genomes to understand this novel coronavirus, some  
196 Latin American researchers have contributed to the publication of sequences of isolated strains

197 from countries such as Chile (Castillo *et al.*, 2020) or Nepal (Sah *et al.*, 2020). Researchers from  
198 other countries have also sequenced the genomes of strains from Argentina, Brazil, Chile,  
199 Colombia, Ecuador, Mexico, Panama, Peru, and Uruguay, totaling 98 genome sequences until  
200 April 20, 2020 (see Supplementary S2 file for detailed information of all sequences). The  
201 GISAID database has these 98 sequences collected along with 10,380 others, meaning that Latin  
202 American contribution is near 0.94% (Hadfield *et al.*, 2018; Sagulenko *et al.*, 2018). Table 2  
203 summarizes this information by country, showing that Brazil and Mexico have the highest  
204 number of sequenced genomes, 52 and 17, respectively. Figure 5 presents some of the Latin  
205 American SARS-CoV-2 strains in the phylogenetic tree, evidencing the high heterogeneity  
206 among them because they belong to different clades.

207

## 208 **5. Medical contributions**

### 209 **5.1. Epidemiological analyses**

210 Studies to track first cases in different countries have been performed, such as the case of tracing  
211 the first cases of COVID-19 in countries like Italy (Giovanetti *et al.*, 2020b) and Chile (Castillo  
212 *et al.*, 2020) using phylogenetic analyses. Both studies found that the first cases came from China  
213 and Europe since S and G variants of SARS-CoV-2 were detected. In the case of Italy, a reentry  
214 from Germany was detected (Giovanetti *et al.*, 2020a). Tracing of imported cases to other Latin  
215 American countries has also been performed using strategies such as data recovery of  
216 international flights from the most affected countries to Brazil (Candido *et al.*, 2020), or  
217 recompilation of epidemiological data from hospitals in Bolivia (Escalera-Antezana *et al.*, 2020).  
218 Both studies concluded that the first imported cases came from Europe, specifically from Italy  
219 and Spain. Moreover, other bioinformatics tools have been used to contribute to epidemiological

220 understanding. For example, a Bayesian phylogeographic reconstruction suggested that Wuhan  
221 was effectively the outbreak epicenter on November 25, 2019, spreading later to other Chinese  
222 regions (Benvenuto *et al.*, 2020c).

223 Additionally, the geo-positioning of some cases and the heterogeneity of the outbreak progress  
224 among countries, with demographic similarities, have been reported (de Figueiredo *et al.*, 2020;  
225 Xu *et al.*, 2020). Other epidemiological studies have been done to predict the COVID-19  
226 spreading (Benvenuto *et al.*, 2020d; Córdova-Lepe *et al.*, 2020; González-Jaramillo *et al.*, 2020;  
227 Manrique-Abril *et al.*, 2020), which concluded that containment strategies are required to avoid  
228 overspreading in countries like Chile and Colombia. Similarly, Kraemer *et al.* (2020) analyzed  
229 the effect of mobility in China before and after the sanitary containment of Wuhan in the  
230 COVID-19 spreading in this country; they demonstrated that decreasing mobility favors the  
231 reduction of COVID-19 spreading.

232

## 233 **5.2. Meta-analyses performed**

234 Latin American researchers have also published meta-analyses of clinical, laboratory, and image  
235 data from reported COVID-19 cases (Borges do Nascimento *et al.*, 2020; Rodriguez-Morales *et*  
236 *al.*, 2020b). On the one hand, the meta-analysis submitted by Rodriguez-Morales *et al.* (2020b)  
237 on February 29, 2020, used 19 articles with 2,874 patients for quantitative analyses. On the other  
238 hand, the meta-analysis of Borges do Nascimento *et al.* (2020), submitted six days later,  
239 employed 61 studies with 59,254 patients. Both revisions included the most common symptoms  
240 as well as typical abnormalities observed in chest radiographs and computed tomographies,  
241 which were like other respiratory illnesses and viral pneumonia, making it difficult to distinguish  
242 from them (Borges do Nascimento *et al.*, 2020). Oxygen support in critical patients was also

243 analyzed, where Borges do Nascimento *et al.* (2020) suggested that excluding the non-invasive  
244 ventilation usage since no evidence supports its benefits.

245 Regarding lethality, the most affected population (81%) was the older group (60 years or more),  
246 but additional information is required to understand the COVID-19 impact on other continents  
247 because most of the data used in these meta-analyses came from China. Therefore, meta-analyses  
248 using Latin American cases would also be ideal for determining how COVID-19 could affect this  
249 region, which has some differences, such as lower average age or higher exposure to respiratory  
250 infections than other regions like Europe (Amariles *et al.*, 2020a). A third meta-analysis was  
251 found, which suggested that it could be possible to predict if a patient with COVID-19 can  
252 present complications. Lagunas-Rangel (2020) hypothesized that complications are related to  
253 high levels of neutrophil-to-lymphocyte ratio (NLR) and low levels of lymphocyte-to-C-reactive  
254 protein ratio (LCR).

255

### 256 **5.3. Search for potential treatments**

257 Concerning treatments to respiratory issues, Khoury *et al.* (2020) revised respiratory therapies  
258 for COVID-19 patients using cell-based treatments such as mesenchymal stem cells (MSCs),  
259 derivatives, or other cells, which have shown positive results in pre-clinical models of influenza.  
260 Conversely, they argued that there were few coronavirus studies, such as the case of seven  
261 COVID-19 patients in Beijing treated with MSCs, who showed apparent improvements up to 4  
262 days after treatment, but lacked detailed information (Leng *et al.*, 2020). Therefore, after a  
263 systematic search in databases, Khoury *et al.* (2020) found 27 ongoing treatments with 1,287  
264 patients. The authors also highlighted the importance of following ethical protocols for these  
265 types of treatments.

266 Besides the previously mentioned review, since currently there are no approved treatments or  
267 vaccines for COVID-19, other revisions have summarized the development of clinical trials for  
268 COVID-19 treatments. This is the case of the search made by Rosa & Santos (2020), who looked  
269 for ongoing clinical trials in Clinicaltrials.gov. The authors used some constraints in their search,  
270 such as low cost, reduced time to reach markets, existing pharmaceutical supplies, or the  
271 possibility to combine with other drugs. In total, 24 clinical trials were found, most of them in  
272 clinical phases 2, 3, or 4, with a scheduled end in 2020. These ongoing clinical trials are using  
273 chloroquine, hydroxychloroquine, human immunoglobulin, remdesivir, arbidol, lopinavir,  
274 ritonavir, oseltamivir, darunavir, cobicistat, interferons, carrimycin, danoprevir, xiyanning,  
275 favipiravir, thalidomide, vitamin C, methylprednisolone, pirfenidone, bromhexie, bevacizumab,  
276 fingolimod, and traditional Chinese medicines (TCM).  
277 Similarly, Serafin *et al.* (2020) searched for new treatments for coronaviruses like SARS-CoV,  
278 SARS-CoV-2, and HCoV-OC43 in PubMed, SCOPUS, and Web of Science databases. The  
279 drugs found as SARS-CoV-2 treatments are captopril, chloroquine, clomipramine, disulfiram,  
280 enalapril, hydroxychloroquine, mefloquine, metformin, nitazoxanide, remdesivir, and  
281 teicoplanin. This review highlighted positive results using chloroquine, hydroxychloroquine,  
282 teicoplanin, and hydroxychloroquine in conjunction with azithromycin. Finally, Rosales-  
283 Mendoza (2020) suggested that a potential treatment with biotechnological origin could be  
284 produced using plant species as hosts.

285

#### 286 **5.4. Medical considerations**

287 Most medical articles studied populations at risk and comorbidities, also provided  
288 recommendations and guidelines for medical personnel. Rascado Sedes *et al.* (2020) developed a

289 contingency plan that allows an optimal response of the intensive care units (ICU) to the  
290 pandemic. The plan considers possible scenarios, the need for human and technical resources,  
291 communication and information, optimized use of resources, and personal protective equipment  
292 (PPE).

293 Healthcare workers, emergency room physicians, anesthesiologists, dentists, ophthalmologists,  
294 head and neck surgeons, maxillofacial surgeons, and otolaryngologists are among the most  
295 vulnerable ones because they perform procedures that can aerosolize secretions (Kowalski *et al.*,  
296 2020). According to several studies, articles, and protocols, Boccalatte *et al.* (2020) summarized  
297 recommendations related to PPE, mandatory use of protective suits, head covers, eye protection,  
298 mask, gloves, and N95, FFP2, or PAPR masks, personnel training, and techniques or  
299 manoeuvres for different medical practices.

300 Concerning surgeries, although there is no information about to translate risks to the operating  
301 room team during such procedures to COVID-19 patients, the recommendation is to postpone  
302 them (Cohen *et al.*, 2020; Ducournau *et al.*, 2020). The situations in which a delay in the surgical  
303 procedure may affect the patient, such as some oncologic or organ transplant surgeries, surgery  
304 must be performed following strict preventive measures. In the case of unpostponable abdominal  
305 surgeries, a laparotomic operation with regional anesthesia should be preferred (Carneiro *et al.*,  
306 2020; Cohen *et al.*, 2020; Correia *et al.*, 2020; Quintão *et al.*, 2020). Other articles summarized  
307 protocols and recommendations for hand (Ducournau *et al.*, 2020), head and neck (Kowalski *et*  
308 *al.*, 2020), and urologic surgeries (Puliatti *et al.*, 2020).

309 Researchers have also performed literature reviews concerning populations with higher risk due  
310 to comorbidities. First, Hussain *et al.* (2020) focused on patients with diabetes mellitus and  
311 COVID-19. They summarized the different determinants that associate this pathology with



312 greater severity and death, as well as the importance of multidisciplinary medical management.  
313 The authors mentioned that COVID-19 could cause pancreatic damage, which could affect  
314 patients with diabetes. Likewise, the positive effects of hydroxychloroquine and chloroquine on  
315 diabetic patients were mentioned, such as reducing insulin degradation tending to normalize  
316 glucose levels. Therefore, in case hydroxychloroquine or chloroquine is administered,  
317 antidiabetic drug doses should be readjusted to avoid hypoglycemic events. The authors also  
318 mentioned the necessity to continue studying in these patients the chronic inflammation, immune  
319 response, coagulation activity, and vascular permeability, as well as whether hyperglycemia or  
320 hypoglycemia can alter the virulence of SARS-CoV-2, or whether the virus itself interferes with  
321 insulin secretion or glycemic control. All this information will be needed to propose adequate  
322 clinical treatments.

323 Likewise, Puliatti *et al.* (2020) considered the effect of SARS-CoV-2 in different organs of the  
324 urinary tract. They highlighted that ACE2-positive cells (target of SARS-CoV-2 spike proteins)  
325 have been found in these organs, which could have a high risk of affectation, even leading to  
326 death, which explains the kidney damage experimented in some COVID-19 patients. Similarly,  
327 chronic hemodialysis patients are also at particular risk due to their immunosuppression status,  
328 advanced age, and comorbidities coexistence. Vega-Vega *et al.* (2020) summarized the  
329 recommendations for these patients proposed by three international organizations: Center for  
330 Disease Control and Prevention (CDC), the Spanish Society of Nephrology, and the Latin  
331 American Society of Nephrology and Hypertension, to which were added suggestions of some  
332 experts. Some recommendations are the proper definition of cases, guidelines for patients and  
333 family, scrutiny of suspicious COVID-19 cases and their management within hemodialysis units,  
334 PPE employment, and sanitation of surfaces and devices.

335 Another group at risk mentioned by researchers is related to critical COVID-19 patients who  
336 need assisted ventilation. Some authors recommend taking into account some considerations  
337 before using high-flow nasal oxygen therapy, non-invasive ventilation, or extracorporeal  
338 membrane oxygenation (ECMO), the latter being a treatment that no all medical centers can  
339 afford. First, if the medical center has adequate protection levels for health workers from exhaled  
340 air dispersed, and second, the impact of treatment on acute respiratory distress syndrome  
341 (ARDS) (Bartlett *et al.*, 2020; Ñamendys-Silva, 2020a; Ñamendys-Silva, 2020b). Similarly,  
342 Chica-Meza *et al.* (2020) summarized conventional and non-conventional respiratory therapies  
343 in critical COVID-19 patients, including recommendations and considerations. Finally, surveys  
344 have been performed to identify COVID-19 impacts in patients at risk, such as pediatric patients  
345 with cancer (Hrusak *et al.*, 2020), but the information is still limited; however, the  
346 recommendation is to follow the same medical practices described previously.

347

### 348 **5.5. Mental health considerations**

349 Mental health care must be considered, given that quarantine can cause boredom, loneliness,  
350 anger, anxiety, depression, and stress. Patients and health workers should have mental health  
351 services (Carvalho *et al.*, 2020b; Lima *et al.*, 2020). In especial when more people can be  
352 affected by mental issues during the outbreak than by the outbreak itself (Ornell *et al.*, 2020),  
353 and previous outbreaks have caused post-traumatic stress disorder (PTSD) in health workers  
354 (Torales *et al.*, 2020).

355 Concerning performed studies on mental issues, first, Fonseca *et al.* (2020) established  
356 recommendations for patients with schizophrenia. Among recommendations are an adequate  
357 identification of COVID-19 symptoms, prevention of worsening of psychiatric symptoms,

358 relapses due to the closed environment, fear of disease and isolation, use of telemedicine,  
359 promoting adherence to antipsychotic medication regimens, reducing emotional distress, hygiene  
360 practices, and family support. Finally, Carvalho *et al.* (2020a), using questionnaires to Brazilians,  
361 investigated whether extroverted and conscientious people are engaged with the containment  
362 measures implemented during the COVID-19 pandemic. They found that extroverted people  
363 seem to lack commitment to containment measures, while people with conscientiousness  
364 personality tend to follow recommendations. Therefore, at least in Brazil, strategies for  
365 extroverted people should be proposed to avoid they become transmission vectors. However, the  
366 idiosyncrasy is similar throughout Latin America; thus, these strategies should be required in the  
367 entire region.

368

## 369 **6. Additional Concerns**

### 370 **6.1. Social and environmental concerns**

- 371 • Telemedicine should be considered as an alternative to patient attention to avoid COVID-19  
372 spreading. However, this strategy is limited because of the scarce existence of telemedicine  
373 systems; thus, social media could be used (Assis Machado *et al.*, 2020; Quintão *et al.*, 2020).
- 374 • Elachola *et al.* (2020) highlighted that there are no prevalence and effectiveness studies on  
375 using facemasks related to the COVID-19 outbreak. This information could be useful in  
376 providing recommendations about their usage. However, based on past outbreaks, the  
377 evidence did not show positive or negative effects when the population used facemasks  
378 (Stern *et al.*, 2020).
- 379 • Since the first COVID-19 cases reported in Latin America, fake news and misinformation  
380 have increased, where even treatments with potential health affectations have been proposed,

381 as in the case of using chloroform or ether as alleged COVID-19 treatments (Lana *et al.*,  
382 2020; Martins & Santos, 2020). Additionally, information should be verified, avoiding panic  
383 spreading, which has caused panic buying of supplies and medications (Cuan-Baltazar *et al.*,  
384 2020).

385 • The quick COVID-19 spreading in different regions and countries could cause that health  
386 workers to become overwhelmed, therefore training new personal, although challenging, is a  
387 necessity that could help to attend the current outbreak. Additionally, the pharmacy  
388 workforce should be prepared as they are the first ones to attend possible cases of infection  
389 (Amariles *et al.*, 2020b; Aruru *et al.*, 2020; Haines *et al.*, 2020).

390 • Countries with low or middle incomes, such as Latin American countries, may have already  
391 saturated their health systems. Hence, the COVID-19 outbreak could oversaturate them  
392 (Carneiro *et al.*, 2020), which can be exacerbated by the lack of government preparation and  
393 social policies, such as the Ecuadorian case (Hallo *et al.*, 2020).

394 • Based on events that occurred with the “Diamond Princess” cruise, alternatives should be  
395 proposed to quarantine people from other cruises and illegal immigrants entering a country  
396 (Sawano *et al.*, 2020).

397 • Due to the current outbreak, many activities have been interrupted, which joined the  
398 socioeconomic limitations of vulnerable groups, could lead to food insecurity in these  
399 populations, who even have no access to clean water (Oliveira *et al.*, 2020).

400 • Knowing that COVID-19 has a zoonotic origin, One Health approach has taken relevance,  
401 which seeks integrative studies where the health of humans, environment, and animals are  
402 considered to understand the virus environment, allowing the prevention or mitigation of  
403 future outbreaks (Bonilla-Aldana *et al.*, 2020a).

404

405 **6.2. Medical concerns**

- 406 • Initial reports of some pathologies such as rheumatic diseases or neuromyelitis optica  
407 spectrum disorder (NMOSD) have shown that they do not increase the risk of complications  
408 like other comorbidities. However, further studies are needed (Carnero Contentti & Correa,  
409 2020; Figueroa-Parra *et al.*, 2020).
- 410 • Angiotensin II receptor blockers (ATII-RB) are hypertensive drugs that increase ACE2  
411 expression; therefore, there is a possibility that they can favor the internalization of SARS-  
412 CoV-2 within the cell; thus, further studies are required. However, suspending ATII-RB  
413 therapy may cause even higher affectations than COVID-19 itself; the risk-benefit ratio  
414 should be evaluated. In case doctors consider suspending it, there are other options like  
415 thiazide diuretics drugs (Gracia-Ramos, 2020; Marin, 2020).
- 416 • As previously mentioned, chloroquine and hydroxychloroquine are *in vitro* inhibitors of  
417 SARS-CoV-2 infection. However, concerns are focused on whether these medications could  
418 decrease viral load or prevent infection, clinical disease, clinical severity, or even death.  
419 Other factors, such as side effects, should also be considered (Kim *et al.*, 2020; Monteiro *et*  
420 *al.*, 2020; Picot *et al.*, 2020).
- 421 • COVID-19 mainly affects the respiratory system, but it can also alter the central nervous  
422 system. Hence, possible affectations in the respiratory center could exacerbate respiratory  
423 distress caused by pulmonary affectation (Conde *et al.*, 2020).
- 424 • Tropical countries affected by dengue could face two outbreaks at the same time, dengue and  
425 COVID-19, which could affect the population, even coinfecting some patients  
426 simultaneously. Both outbreaks will require the intensive attention of health systems to avoid

- 427 a crossed affectation between them, which can be challenging and overwhelming for the  
428 health systems (Lorenz *et al.*, 2020; Navarro *et al.*, 2020; Rodriguez-Morales *et al.*, 2020c;  
429 Saavedra-Velasco *et al.*, 2020).
- 430 • As SARS-CoV-2 can remain in saliva, oral health professionals require research focused on  
431 the influence of COVID-19 in their activities to take appropriate measures. However, the  
432 recommendation is to stop dental treatments (Martelli-Júnior *et al.*, 2020; Napimoga &  
433 Freitas, 2020; Sabino-Silva *et al.*, 2020).
  - 434 • Strategies during intubation are not the only important ones to avoid COVID-19 spreading in  
435 health workers during medical procedures; strategies for extubation are also required  
436 (Trujillo, 2020).
  - 437 • There is no evidence that immunosuppressant treatments (ITS) could decrease or increase the  
438 risk of severe COVID-19 infection; therefore, further investigation is recommended. In case  
439 treatments are suspended, factors such as potential issues on patients should be considered  
440 (Carnero Contentti & Correa, 2020).
  - 441 • There is limited evidence of COVID-19 effect on pregnant women; hence, cases of pregnant  
442 women with COVID-19 should be studied to understand the clinical impact of the infection  
443 (Zambrano *et al.*, 2020).

444

## 445 **Conclusions**

446 Although our purpose was to give visibility to the contribution of Latin American researchers in  
447 the knowledge generation related to the COVID-19 outbreak, this review has two drawbacks.  
448 The first is the continuous availability of new publications; therefore, an observation window  
449 was employed. Second, several Latin American researchers are currently working on other

450 continents without a Latin American affiliation, making them impossible to track. However, after  
451 this literature review, we were able to evidence the active participation of Latin American  
452 researchers in different subjects, whether as members of national, regional (LANCOVID-19), or  
453 even international research groups. Concerning our findings, the publications evidenced that  
454 these research groups have advanced in molecular and medical subjects, mainly in genetic  
455 understanding, epidemiological behaviors, meta-analyses, interaction between COVID-19 and  
456 other pathologies, and recommendations to medical procedures. Finally, understanding that this  
457 health crisis requires the commitment of as many researchers as possible, our wish is that the  
458 contribution of Latin American researchers continues to grow. Some topics with regional and  
459 global interest for future studies include *in silico* analyses of potential treatments and their  
460 respective *in vitro* and *in vivo* validations, meta-analysis of Latin American patients, and  
461 epidemiological surveillances. Regarding medical considerations, a deeper understanding of the  
462 COVID-19 interaction with risk comorbidities is needed to propose adequate clinical treatments.  
463 The same applies to unexplored/underexplored physical and mental pathologies, such as dengue.  
464

## 465 **Acknowledgments**

466 This review is in memory of all deceased by the COVID-19 outbreak.

467

## 468 **References**

469 Amariles P, Granados J, Ceballos M, and Montoya CJ. 2020a. COVID-19 in Colombia  
470 endpoints. Are we different, like Europe? *Research in Social and Administrative*  
471 *Pharmacy*. DOI 10.1016/j.sapharm.2020.03.013.

- 472 Amariles P, Ledezma-Morales M, Salazar-Ospina A, and Hincapié-García JA. 2020b. How to  
473 link patients with suspicious COVID-19 to health system from the community  
474 pharmacies? A route proposal. *Research in Social and Administrative Pharmacy*. DOI  
475 10.1016/j.sapharm.2020.03.007.
- 476 Andersen KG, Rambaut A, Lipkin WI, Holmes EC, and Garry RF. 2020. The proximal origin of  
477 SARS-CoV-2. *Nature Medicine*. DOI 10.1038/s41591-020-0820-9.
- 478 Angeletti S, Benvenuto D, Bianchi M, Giovanetti M, Pascarella S, and Ciccozzi M. 2020.  
479 COVID-2019: The role of the nsp2 and nsp3 in its pathogenesis. *Journal of Medical*  
480 *Virology*. DOI 10.1002/jmv.25719.
- 481 Aruru M, Truong H-A, and Clark S. 2020. Pharmacy Emergency Preparedness and Response  
482 (PEPR) framework for expanding pharmacy professionals' roles and contributions to  
483 emergency preparedness and response during the COVID-19 pandemic and beyond.  
484 *Research in Social and Administrative Pharmacy*. DOI 10.1016/j.sapharm.2020.04.002.
- 485 Assis Machado R, Lins de Souza N, Maria Oliveira R, Martelli Júnior H, and Rogério Ferreti  
486 Bonan P. 2020. Social Media and telemedicine for oral diagnosis and counselling in the  
487 COVID-19 Era. *Oral Oncology*:104685. DOI 10.1016/j.oraloncology.2020.104685.
- 488 Bartlett RH, Ogino MT, Brodie D, McMullan DM, Lorusso R, MacLaren G, Stead CM, Rycus P,  
489 Fraser JF, Belohlavek J, Salazar L, Mehta Y, Raman L, and Paden ML. 2020. Initial  
490 ELSO Guidance Document: ECMO for COVID-19 Patients with Severe  
491 Cardiopulmonary Failure. *ASAIO Journal: Artificial Organ Research and Development*  
492 Online First. DOI 10.1097/mat.0000000000001173.
- 493 Benvenuto D, Angeletti S, Giovanetti M, Bianchi M, Pascarella S, Cauda R, Ciccozzi M, and  
494 Cassone A. 2020a. Evolutionary analysis of SARS-CoV-2: how mutation of Non-



- 495 Structural Protein 6 (NSP6) could affect viral autophagy. *Journal of Infection*. DOI  
496 10.1016/j.jinf.2020.03.058.
- 497 Benvenuto D, Giovanetti M, Ciccozzi A, Spoto S, Angeletti S, and Ciccozzi M. 2020b. The  
498 2019-new coronavirus epidemic: Evidence for virus evolution. *Journal of Medical*  
499 *Virology* 92:455-459. DOI 10.1002/jmv.25688.
- 500 Benvenuto D, Giovanetti M, Salemi M, Prosperi M, De Flora C, Alcantara LC, Angeletti S, and  
501 Ciccozzi M. 2020c. The global spread of 2019-nCoV: a molecular evolutionary analysis.  
502 *Pathogens and Global Health*. DOI 10.1080/20477724.2020.1725339.
- 503 Benvenuto D, Giovanetti M, Vassallo L, Angeletti S, and Ciccozzi M. 2020d. Application of the  
504 ARIMA model on the COVID-2019 epidemic dataset. *Data in Brief* 29. DOI  
505 10.1016/j.dib.2020.105340.
- 506 Boccalatte LA, Larrañaga JJ, Perez Raffo GM, Tejjido CA, García Fornari G, Staneloni MI, and  
507 Figari MF. 2020. Brief guideline for the prevention of COVID-19 infection in head and  
508 neck and otolaryngology surgeons. *American Journal of Otolaryngology*:102484. DOI  
509 10.1016/j.amjoto.2020.102484.
- 510 Bonilla-Aldana DK, Dhama K, and Rodriguez-Morales AJ. 2020a. Revisiting the One Health  
511 Approach in the Context of COVID-19: A Look into the Ecology of this Emerging  
512 Disease. *Advances in Animal and Veterinary Sciences* 8:234-236. DOI  
513 10.17582/journal.aavs/2020/8.3.234.236.
- 514 Bonilla-Aldana DK, Quintero-Rada K, Montoya-Posada JP, Ramirez-Ocampo S, Paniz-Mondolfi  
515 A, Rabaan AA, Sah R, and Rodriguez-Morales AJ. 2020b. SARS-CoV, MERS-CoV and  
516 now the 2019-novel CoV: Have we investigated enough about coronaviruses? - A

517 bibliometric analysis. *Travel Medicine and Infectious Disease* 33. DOI  
518 10.1016/j.tmaid.2020.101566.

519 Borges do Nascimento JI, Cacic N, Abdulazeem MH, von Groote CT, Jayarajah U, Weerasekara  
520 I, Esfahani AM, Civile TV, Marusic A, Jeroncic A, Carvas Junior N, Pericic PT,  
521 Zakarija-Grkovic I, Meirelles Guimarães MS, Luigi Bragazzi N, Bjorklund M, Sofi-  
522 Mahmudi A, Altujjar M, Tian M, Arcani MD, O’Mathúna PD, and Marcolino SM. 2020.  
523 Novel Coronavirus Infection (COVID-19) in Humans: A Scoping Review and Meta-  
524 Analysis. *Journal of Clinical Medicine* 9. DOI 10.3390/jcm9040941.

525 Candido DDS, Watts A, Abade L, Kraemer MUG, Pybus OG, Croda J, Oliveira W, Khan K,  
526 Sabino EC, and Faria NR. 2020. Routes for COVID-19 importation in Brazil. *Journal of*  
527 *travel medicine*. DOI 10.1093/jtm/taaa042.

528 Cardenas-Conejo Y, Linan-Rico A, Garcia-Rodriguez DA, Centeno-Leija S, and Serrano-Posada  
529 H. 2020. An exclusive 42 amino acid signature in pp1ab protein provides insights into the  
530 evolutive history of the 2019 novel human-pathogenic coronavirus (SARS-CoV-2).  
531 *Journal of Medical Virology*. DOI 10.1002/jmv.25758.

532 Carneiro A, Wroclawski M, Nahar B, Soares A, Cardoso A, Kim N, and Carvalho F. 2020.  
533 Impact of the COVID-19 Pandemic on the Urologist's clinical practice in Brazil: a  
534 management guideline proposal for low- and middle-income countries during the crisis  
535 period. *International Brazilian Journal of Urology* 46. DOI 10.1590/S1677-  
536 5538.IBJU.2020.04.03.

537 Carnero Contentti E, and Correa J. 2020. Immunosuppression during the COVID-19 pandemic in  
538 neuromyelitis optica spectrum disorders patients: A new challenge. *Multiple Sclerosis*  
539 *and Related Disorders* 41:102097. DOI 10.1016/j.msard.2020.102097.

- 540 Carvalho LdF, Pianowski G, and Gonçalves AP. 2020a. Personality differences and COVID-19:  
541 are extroversion and conscientiousness personality traits associated with engagement  
542 with containment measures? *Trends in Psychiatry and Psychotherapy*. DOI  
543 10.1590/2237-6089-2020-0029.
- 544 Carvalho PMdM, Moreira MM, de Oliveira MNA, Landim JMM, and Neto MLR. 2020b. The  
545 psychiatric impact of the novel coronavirus outbreak. *Psychiatry Research* 286:112902.  
546 DOI 10.1016/j.psychres.2020.112902.
- 547 Castillo AE, Parra B, Tapia P, Acevedo A, Lagos J, Andrade W, Arata L, Leal G, Barra G,  
548 Tambley C, Tognarelli J, Bustos P, Ulloa S, Fasce R, and Fernández J. 2020.  
549 Phylogenetic analysis of the first four SARS-CoV-2 cases in Chile. *Journal of Medical*  
550 *Virology* n/a. DOI 10.1002/jmv.25797.
- 551 Ciccozzi M, Benvenuto D, Giovanetti M, Bianchi M, Pascarella S, and Angeletti S. 2020.  
552 Response to Ribeiro da Silva et al., “Role of Nonstructural Proteins in the Pathogenesis of  
553 SARS-CoV-2. *Journal of Medical Virology* n/a. DOI 10.1002/jmv.25863.
- 554 Ciotti M, Angeletti S, Minieri M, Giovannetti M, Benvenuto D, Pascarella S, Sagnelli C, Bianchi  
555 M, Bernardini S, and Ciccozzi M. 2020. COVID-19 Outbreak: An Overview.  
556 *Chemotherapy*. DOI 10.1159/000507423.
- 557 Cleemput S, Dumon W, Fonseca V, Karim WA, Giovanetti M, Alcantara LC, Deforche K, and  
558 de Oliveira T. 2020. Genome Detective Coronavirus Typing Tool for rapid identification  
559 and characterization of novel coronavirus genomes. *Bioinformatics*. DOI  
560 10.1093/bioinformatics/btaa145.

- 561 Cohen SL, Liu G, Abrao M, Smart N, and Heniford T. 2020. Perspectives on Surgery in the time  
562 of COVID-19: Safety First. *Journal of Minimally Invasive Gynecology*. DOI  
563 10.1016/j.jmig.2020.04.003.
- 564 Conde G, Quintana Pájaro LD, Quintero Marzola ID, Villegas YR, and Moscote Salazar LR.  
565 2020. Neurotropism of SARS-CoV 2: Mechanisms and manifestations. *Journal of the*  
566 *Neurological Sciences*:116824. DOI 10.1016/j.jns.2020.116824.
- 567 Córdova-Lepe F, Gutiérrez-Aguilar R, and Gutiérrez-Jara JP. 2020. Number of COVID-19 cases  
568 in Chile at 120 days with data at 21/03/2020 and threshold of daily effort to flatten the  
569 epi-curve. *Medwave* 20:e7861. DOI 10.5867/medwave.2020.02.7861.
- 570 Correia MITD, Ramos RF, and Bahten LCV. 2020. Os cirurgiões e a pandemia do COVID-19.  
571 *Revista do Colégio Brasileiro de Cirurgiões* 47. DOI 10.1590/0100-6991e-20202536.
- 572 Cuan-Baltazar JY, Muñoz-Perez MJ, Robledo-Vega C, Pérez-Zepeda MF, and Soto-Vega E.  
573 2020. Misinformation of COVID-19 on the Internet: Infodemiology Study. *JMIR Public*  
574 *Health Surveill* 6:e18444. DOI 10.2196/18444.
- 575 Cupertino MC, Resende MB, Mayers NAJ, Carvalho LM, and Siqueira-Batista R. 2020.  
576 Emerging and re-emerging human infectious diseases: A systematic review of the role of  
577 wild animals with a focus on public health impact. *Asian Pacific Journal of Tropical*  
578 *Medicine* 13:99-106. DOI 10.4103/1995-7645.277535.
- 579 Chica-Meza C, Peña-López LA, Villamarín-Guerrero HF, Moreno-Collazos JE, Rodríguez-  
580 Corredor LC, Lozano WM, and Vargas-Ordoñez MP. 2020. Cuidado Respiratorio En  
581 Covid-19. *Acta Colombiana de Cuidado Intensivo*. DOI 10.1016/j.acci.2020.04.001.

- 582 de Figueiredo AM, Codina AD, de Figueiredo DCMM, Gil-García E, and Kalache A. 2020.  
583 Letalidad del COVID-19: ausencia de patrón epidemiológico. *Gaceta Sanitaria*. DOI  
584 10.1016/j.gaceta.2020.04.001.
- 585 Diaz-Quijano FA, Rodriguez-Morales AJ, and Waldman EA. 2020. Translating transmissibility  
586 measures into recommendations for coronavirus prevention. *Revista de Saúde Pública* 54.  
587 DOI 10.11606/s1518-8787.2020054002471.
- 588 Ducournau F, Arianni M, Awwad S, Baur EM, Beaulieu JY, Bouloudhine M, Caloia M, Chagar  
589 K, Chen Z, Chin AY, Chow EC, Cobb T, David Y, Delgado PJ, Woon Man Fok M,  
590 French R, Golubev I, Haugstvedt JR, Ichihara E, Jorquera RA, Koo SCJJ, Lee JY, Lee  
591 YK, Lee YJ, Liu B, Kaleli T, Mantovani GR, Mathoulin C, Messina JC, Muccioli C,  
592 Nazerani S, Ng CY, Obdeijn MC, Van Overstraeten L, Prasetyono TOH, Ross M, Shih  
593 JT, Smith N, Suarez RFA, Chan PT, Tiemdjo H, Wahegaonkar A, Wells MC, Wong WY,  
594 Wu F, Yang XF, Yanni D, Yao J, and Liverneaux PA. 2020. COVID-19: Initial  
595 experience of an international group of hand surgeons. *Hand Surgery and Rehabilitation*.  
596 DOI 10.1016/j.hansur.2020.04.001.
- 597 Elachola H, Ebrahim SH, and Gozzer E. 2020. COVID-19: Facemask use prevalence in  
598 international airports in Asia, Europe and the Americas, March 2020. *Travel Medicine*  
599 *and Infectious Disease*:101637. DOI 10.1016/j.tmaid.2020.101637.
- 600 Escalera-Antezana JP, Lizon-Ferrufino NF, Maldonado-Alanoca A, Alarcón-De-la-Vega G,  
601 Alvarado-Arnez LE, Balderrama-Saavedra MA, Bonilla-Aldana DK, and Rodríguez-  
602 Morales AJ. 2020. Clinical features of cases and a cluster of Coronavirus Disease 2019  
603 (COVID-19) in Bolivia imported from Italy and Spain. *Travel Medicine and Infectious*  
604 *Disease*:101653. DOI 10.1016/j.tmaid.2020.101653.

- 605 Figueroa-Parra G, Aguirre-Garcia GM, Gamboa-Alonso CM, Camacho-Ortiz A, and Galarza-  
606 Delgado DA. 2020. Are my patients with rheumatic diseases at higher risk of COVID-  
607 19? *Annals of the Rheumatic Diseases*. DOI 10.1136/annrheumdis-2020-217322.
- 608 Fonseca L, Diniz E, Mendonça G, Malinowski F, Mari J, and Gadelha A. 2020. Schizophrenia  
609 and COVID-19: risks and recommendations. *Brazilian Journal of Psychiatry*. DOI  
610 10.1590/1516-4446-2020-0010.
- 611 Giovanetti M, Angeletti S, Benvenuto D, and Ciccozzi M. 2020a. A doubt of multiple  
612 introduction of SARS-CoV-2 in Italy: A preliminary overview. *Journal of Medical*  
613 *Virology*. DOI 10.1002/jmv.25773.
- 614 Giovanetti M, Benvenuto D, Angeletti S, and Ciccozzi M. 2020b. The first two cases of 2019-  
615 nCoV in Italy: Where they come from? *Journal of Medical Virology* 92:518-521. DOI  
616 10.1002/jmv.25699.
- 617 González-Jaramillo V, González-Jaramillo N, Gómez-Restrepo C, Palacio-Acosta CA, Gómez-  
618 López A, and Franco OH. 2020. Proyecciones de impacto de la pandemia COVID-19 en  
619 la población colombiana, según medidas de mitigación. Datos preliminares de modelos  
620 epidemiológicos para el periodo del 18 de marzo al 18 de abril de 2020. *Revista de Salud*  
621 *Pública* 22. DOI 10.15446/rsap.v22.85789.
- 622 Gracia-Ramos AE. 2020. Is the ACE2 Overexpression a Risk Factor for COVID-19 Infection?  
623 *Archives of Medical Research*. DOI 10.1016/j.arcmed.2020.03.011.
- 624 Hadfield J, Megill C, Bell SM, Huddleston J, Potter B, Callender C, Sagulenko P, Bedford T,  
625 and Neher RA. 2018. NextStrain: Real-time tracking of pathogen evolution.  
626 *Bioinformatics* 34:4121-4123. DOI 10.1093/bioinformatics/bty407.

- 627 Haines A, de Barros EF, Berlin A, Heymann DL, and Harris MJ. 2020. National UK programme  
628 of community health workers for COVID-19 response. *The Lancet* 395:1173-1175. DOI  
629 10.1016/S0140-6736(20)30735-2.
- 630 Hallo A, Rojas A, and Hallo C. 2020. Perspective from Ecuador, the Second Country with More  
631 Confirmed Cases of Coronavirus Disease 2019 in South America: A Review. *Cureus* 12.  
632 DOI 10.7759/cureus.7452.
- 633 Hrusak O, Kalina T, Wolf J, Balduzzi A, Provenzi M, Rizzari C, Rives S, del Pozo Carlavilla M,  
634 Valerio Alonso ME, Domínguez Pinilla N, Bourquin J-P, Schmiegelow K, Attarbaschi A,  
635 Grillner P, Mellgren K, Ten Bosch van der Werff J, Pieters R, Brozou T, Borkhardt A,  
636 Escherich G, Lauten M, Stanulla M, Smith O, Juh Yeoh AE, Elitzur S, Vora A, Li C-K,  
637 Ariffin H, Kolenova A, Dallapozza L, Farah R, Lazic J, Manabe A, Styczynski J, Kovacs  
638 G, Ottoffy G, Felice M, Buldini B, Conter V, Stary J, and Schrappe M. 2020. Flash  
639 Survey on SARS-CoV-2 Infections in Pediatric Patients on anti-Cancer Treatment.  
640 *European Journal of Cancer*. DOI 10.1016/j.ejca.2020.03.021.
- 641 Huang C, Wang Y, Li X, Ren L, Zhao J, Hu Y, Zhang L, Fan G, Xu J, Gu X, Cheng Z, Yu T,  
642 Xia J, Wei Y, Wu W, Xie X, Yin W, Li H, Liu M, Xiao Y, Gao H, Guo L, Xie J, Wang  
643 G, Jiang R, Gao Z, Jin Q, Wang J, and Cao B. 2020. Clinical features of patients infected  
644 with 2019 novel coronavirus in Wuhan, China. *The Lancet* 395:497-506. DOI  
645 10.1016/s0140-6736(20)30183-5.
- 646 Hussain A, Bhowmik B, and do Vale Moreira NC. 2020. COVID-19 and Diabetes: Knowledge  
647 in Progress. *Diabetes Research and Clinical Practice*:108142. DOI  
648 10.1016/j.diabres.2020.108142.

- 649 Johns Hopkins University. 2020. COVID-19 Dashboard by the Center for Systems Science and  
650 Engineering (CSSE). Available at <https://coronavirus.jhu.edu/map.html>.
- 651 Khoury M, Cuenca J, Cruz FF, Figueroa FE, Rocco PRM, and Weiss DJ. 2020. Current Status of  
652 Cell-Based Therapies for Respiratory Virus Infections: Applicability to COVID-19.  
653 *European Respiratory Journal*:2000858. DOI 10.1183/13993003.00858-2020.
- 654 Kim AHJ, Sparks JA, Liew JW, Putman MS, Berenbaum F, Duarte-García A, Graef ER, Korsten  
655 P, Sattui SE, Sirotich E, Ugarte-Gil MF, Webb K, Grainger R, and Alliance† C-GR.  
656 2020. A Rush to Judgment? Rapid Reporting and Dissemination of Results and Its  
657 Consequences Regarding the Use of Hydroxychloroquine for COVID-19. *Annals of*  
658 *internal medicine*:M20-1223. DOI 10.7326/m20-1223.
- 659 Kowalski LP, Sanabria A, Ridge JA, Ng WT, de Bree R, Rinaldo A, Takes RP, Mäkitie AA,  
660 Carvalho AL, Bradford CR, Paleri V, Hartl DM, Poorten VV, Nixon IJ, Piazza C, Lacy  
661 P, Rodrigo JP, Guntinas-Lichius O, Mendenhall WM, D'Cruz A, Lee AWM, and Ferlito  
662 A. 2020. COVID-19 pandemic: effects and evidence-based recommendations for  
663 otolaryngology and head and neck surgery practice. *Head & Neck* n/a. DOI  
664 10.1002/hed.26164.
- 665 Kraemer MUG, Yang C-H, Gutierrez B, Wu C-H, Klein B, Pigott DM, du Plessis L, Faria NR,  
666 Li R, Hanage WP, Brownstein JS, Layan M, Vespignani A, Tian H, Dye C, Pybus OG,  
667 and Scarpino SV. 2020. The effect of human mobility and control measures on the  
668 COVID-19 epidemic in China. *Science*:eabb4218. DOI 10.1126/science.abb4218.
- 669 Lagunas-Rangel FA. 2020. Neutrophil-to-Lymphocyte ratio and Lymphocyte-to-C-reactive  
670 protein ratio in patients with severe coronavirus disease 2019 (COVID-19): A meta-  
671 analysis. *Journal of Medical Virology* n/a. DOI 10.1002/jmv.25819.



- 672 Lana RM, Coelho FC, Gomes MFDC, Cruz OG, Bastos LS, Villela DAM, and Codeço CT.  
673 2020. The novel coronavirus (SARS-CoV-2) emergency and the role of timely and  
674 effective national health surveillance. *Cadernos de saude publica* 36:e00019620. DOI  
675 10.1590/0102-311x00019620.
- 676 Leng Z, Zhu R, Hou W, Feng Y, Yang Y, Han Q, Shan G, Meng F, Du D, Wang S, Fan J, Wang  
677 W, Deng L, Shi H, Li H, Hu Z, Zhang F, Gao J, Liu H, Li X, Zhao Y, Yin K, He X, Gao  
678 Z, Wang Y, Yang B, Jin R, Stambler I, Lim LW, Su H, Moskalev A, Cano A,  
679 Chakrabarti S, Min K-J, Ellison-Hughes G, Caruso C, Jin K, and Zhao RC. 2020.  
680 Transplantation of ACE2(-) Mesenchymal Stem Cells Improves the Outcome of Patients  
681 with COVID-19 Pneumonia. *Aging and Disease* 11:216-228. DOI  
682 10.14336/ad.2020.0228.
- 683 Lima CKT, Carvalho PMDM, Lima IDAAS, Nunes JVADO, Saraiva JS, de Souza RI, da Silva  
684 CGL, and Neto MLR. 2020. The emotional impact of Coronavirus 2019-nCoV (new  
685 Coronavirus disease). *Psychiatry Research* 287. DOI 10.1016/j.psychres.2020.112915.
- 686 Lorenz C, Azevedo TS, and Chiaravalloti-Neto F. 2020. COVID-19 and dengue fever: A  
687 dangerous combination for the health system in Brazil. *Travel Medicine and Infectious  
688 Disease*:101659. DOI 10.1016/j.tmaid.2020.101659.
- 689 Manrique-Abril FG, Agudelo-Calderon CA, González-Chordá VM, Gutiérrez-Lesmes O, Téllez-  
690 Piñerez CF, and Herrera-Amaya G. 2020. Modelo SIR de la pandemia de COVID-19 en  
691 Colombia. *Revista de Salud Pública* 22. DOI 10.15446/rsap.v22.85977.
- 692 Marin GH. 2020. Facts and reflections on COVID-19 and anti-hypertensives drugs. *Drug  
693 Discoveries & Therapeutics*. DOI 10.5582/ddt.2020.01017.

- 694 Martelli-Júnior H, Machado RA, Martelli DRB, and Coletta RD. 2020. Dental journals and  
695 coronavirus disease (COVID-19): A current view. *Oral Oncology*:104664. DOI  
696 10.1016/j.oraloncology.2020.104664.
- 697 Martins PR, and Santos VS. 2020. No evidence supports the use of ether and chloroform  
698 inhalation for treating COVID-19. *Revista Panamericana De Salud Publica-Pan  
699 American Journal of Public Health* 44. DOI 10.26633/rpsp.2020.41.
- 700 Millán-Oñate J, Rodriguez-Morales AJ, Camacho-Moreno G, Mendoza-Ramírez H, Rodríguez-  
701 Sabogal IA, and Álvarez-Moreno C. 2020. A NEW EMERGING ZOOONOTIC VIRUS  
702 OF CONCERN: THE 2019 NOVEL CORONAVIRUS (COVID-19). *Infectio* 24. DOI  
703 10.22354/in.v24i3.848.
- 704 Monteiro WM, Brito-Sousa JD, Baía-da-Silva D, Melo GCd, Siqueira AM, Val F, Daniel-  
705 Ribeiro CT, and Guimarães Lacerda MV. 2020. Driving forces for COVID-19 clinical  
706 trials using chloroquine: the need to choose the right research questions and outcomes.  
707 *Revista da Sociedade Brasileira de Medicina Tropical* 53. DOI 10.1590/0037-8682-  
708 0155-2020.
- 709 Napimoga MH, and Freitas ARRd. 2020. Dentistry vs Severe Acute Respiratory Syndrome  
710 Coronavirus 2: How to face this enemy. *RGO - Revista Gaúcha de Odontologia* 68. DOI  
711 10.1590/1981-863720200001120200034.
- 712 Navarro J-C, Arrivillaga-Henríquez J, Salazar-Loor J, and Rodriguez-Morales AJ. 2020.  
713 COVID-19 and dengue, co-epidemics in Ecuador and other countries in Latin America:  
714 Pushing strained health care systems over the edge. *Travel Medicine and Infectious  
715 Disease*:101656. DOI 10.1016/j.tmaid.2020.101656.

- 716 Ñamendys-Silva SA. 2020a. ECMO for ARDS due to COVID-19. *Heart & Lung*. DOI  
717 10.1016/j.hrtlng.2020.03.012.
- 718 Ñamendys-Silva SA. 2020b. Respiratory support for patients with COVID-19 infection. *The  
719 Lancet Respiratory Medicine* 8:e18. DOI 10.1016/s2213-2600(20)30110-7.
- 720 Oliveira TC, Abranches MV, and Lana RM. 2020. (In)Segurança alimentar no contexto da  
721 pandemia por SARS-CoV-2. *Cadernos de saude publica* 36. DOI 10.1590/0102-  
722 311X00055220.
- 723 Ornell F, Schuch JB, Sordi AO, and Kessler FHP. 2020. “Pandemic fear” and COVID-19:  
724 mental health burden and strategies. *Brazilian Journal of Psychiatry*. DOI 10.1590/1516-  
725 4446-2020-0008.
- 726 Ortega JT, Serrano ML, Pujol FH, and Rangel HR. 2020a. Role of changes in SARS-CoV-2  
727 spike protein in the interaction with the human ACE2 receptor: An in silico analysis.  
728 *EXCLI journal* 19:410-417. DOI 10.17179/excli2020-1167.
- 729 Ortega JT, Serrano ML, Pujol FH, and Rangel HR. 2020b. Unrevealing sequence and structural  
730 features of novel coronavirus using in silico approaches: The main protease as molecular  
731 target. *EXCLI journal* 19:400-409. DOI 10.17179/excli2020-1189.
- 732 Palacios Cruz M, Santos E, Velázquez Cervantes MA, and León Juárez M. 2020. COVID-19,  
733 una emergencia de salud pública mundial. *Revista Clínica Española*. DOI  
734 10.1016/j.rce.2020.03.001.
- 735 Picot S, Marty A, Bienvenu A-L, Blumberg LH, Dupouy-Camet J, Carnevale P, Kano S, Jones  
736 MK, Daniel-Ribeiro CT, and Mas-Coma S. 2020. Coalition: Advocacy for prospective  
737 clinical trials to test the post-exposure potential of hydroxychloroquine against COVID-  
738 19. *One Health*:100131. DOI 10.1016/j.onehlt.2020.100131.

- 739 Puliatti S, Eissa A, Eissa R, Amato M, Mazzone E, Dell'Oglio P, Sighinolfi MC, Zoeir A, Micali  
740 S, Bianchi G, Patel V, Wiklund P, Coelho RF, Bernhard J-C, Dasgupta P, Mottrie A, and  
741 Rocco B. 2020. COVID-19 and Urology: A Comprehensive Review of the Literature.  
742 *BJU International* n/a. DOI 10.1111/bju.15071.
- 743 Quintão VC, Simões CM, Lima LHNe, Barros GAMd, Salgado-Filho MF, Guimarães GMN,  
744 Alves RL, Caetano AMM, Schmidt AP, and Carmona MJC. 2020. The Anesthesiologist  
745 and COVID-19. *Brazilian Journal of Anesthesiology (English Edition)*. DOI  
746 10.1016/j.bjane.2020.03.002.
- 747 Rascado Sedes P, Ballesteros Sanz MÁ, Bodí Saera MA, Carrasco Rodríguez-Rey LF,  
748 Castellanos Ortega Á, Catalán González M, de Haro López C, Díaz Santos E, Escriba  
749 Barcena A, Frade Mera MJ, Igeño Cano JC, Martín Delgado MC, Martínez Estalella G,  
750 Raimondi N, Roca I Gas O, Rodríguez Oviedo A, Romero San Pío E, Trenado Álvarez J,  
751 and Raurell M. 2020. Plan de contingencia para los servicios de medicina intensiva frente  
752 a la pandemia COVID-19♦. *Enfermería Intensiva*. DOI 10.1016/j.enfi.2020.03.001.
- 753 Rodriguez-Morales AJ, Bonilla-Aldana DK, Tiwari R, Sah R, Rabaan AA, and Dhama K. 2020a.  
754 COVID-19, an Emerging Coronavirus Infection: Current Scenario and Recent  
755 Developments – An Overview. *Journal of Pure and Applied Microbiology* 14:05-12. DOI  
756 10.22207/JPAM.14.1.02.
- 757 Rodriguez-Morales AJ, Cardona-Ospina JA, Gutiérrez-Ocampo E, Villamizar-Peña R, Holguin-  
758 Rivera Y, Escalera-Antezana JP, Alvarado-Arnez LE, Bonilla-Aldana DK, Franco-  
759 Paredes C, Henao-Martinez AF, Paniz-Mondolfi A, Lagos-Grisales GJ, Ramírez-Vallejo  
760 E, Suárez JA, Zambrano LI, Villamil-Gómez WE, Balbin-Ramon GJ, Rabaan AA,  
761 Harapan H, Dhama K, Nishiura H, Kataoka H, Ahmad T, Sah R, and Latin American

- 762 Network of Coronavirus Disease C-R. 2020b. Clinical, laboratory and imaging features  
763 of COVID-19: A systematic review and meta-analysis. *Travel Medicine and Infectious*  
764 *Disease*. DOI 10.1016/j.tmaid.2020.101623.
- 765 Rodriguez-Morales AJ, Sah R, and Paniz-Mondolfi A. 2020c. Should the Holy Week 2020 be  
766 cancelled in Latin America due to the COVID-19 pandemic? *Travel Medicine and*  
767 *Infectious Disease*:101633. DOI 10.1016/j.tmaid.2020.101633.
- 768 Rodriguez-Morales AJ, Sánchez-Duque JA, Hernández Botero S, Pérez-Díaz CE, Villamil-  
769 Gómez WE, Méndez CA, Verbanaz S, Cimerman S, Rodriguez-Enciso HD, Escalera-  
770 Antezana JP, Balbin-Ramon GJ, Arteaga-Livias FK, Cvetkovic-Vega A, Orduna T,  
771 Savio-Larrea E, and Paniz-Mondolfi A. 2020d. Preparación y control de la enfermedad  
772 por coronavirus 2019 (COVID-19) en América Latina. *ACTA MEDICA PERUANA* 37.  
773 DOI 10.35663/amp.2020.371.909.
- 774 Rosa SGV, and Santos WC. 2020. Clinical trials on drug repositioning for COVID-19 treatment.  
775 *Revista Panamericana De Salud Publica-Pan American Journal of Public Health* 44.  
776 DOI 10.26633/rpsp.2020.40.
- 777 Rosales-Mendoza S. 2020. Will plant-made biopharmaceuticals play a role in the fight against  
778 COVID-19? *Expert Opinion on Biological Therapy*:null-null. DOI  
779 10.1080/14712598.2020.1752177.
- 780 Saavedra-Velasco M, Chiara-Chilet C, Pichardo-Rodriguez R, Grandez-Urbina A, and Inga-  
781 Berrospi F. 2020. Coinfección entre dengue y COVID-19: Necesidad de abordaje en  
782 zonas endémicas. *Revista de la Facultad de Ciencias Médicas de Córdoba* 77. DOI  
783 10.31053/1853.0605.v77.n1.28031.

- 784 Sabino-Silva R, Jardim ACG, and Siqueira WL. 2020. Coronavirus COVID-19 impacts to  
785 dentistry and potential salivary diagnosis. *Clinical Oral Investigations*. DOI  
786 10.1007/s00784-020-03248-x.
- 787 Sagulenko P, Puller V, and Neher RA. 2018. TreeTime: Maximum-likelihood phylodynamic  
788 analysis. *Virus evolution* 4:vex042-vex042. DOI 10.1093/ve/vex042.
- 789 Sah R, Rodriguez-Morales AJ, Jha R, Chu DKW, Gu H, Peiris M, Bastola A, Lal BK, Ojha HC,  
790 Rabaan AA, Zambrano LI, Costello A, Morita K, Pandey BD, and Poon LLM. 2020.  
791 Complete genome sequence of a 2019 novel coronavirus (SARS-COV-2) strain isolated  
792 in Nepal. *Microbiology Resource Announcements* 9. DOI 10.1128/mra.00169-20.
- 793 Sawano T, Ozaki A, Rodriguez-Morales AJ, Tanimoto T, and Sah R. 2020. Limiting spread of  
794 COVID-19 from cruise ships - lessons to be learnt from Japan. *QJM: An International  
795 Journal of Medicine*. DOI 10.1093/qjmed/hcaa092.
- 796 Serafin MB, Bottega A, Foletto VS, da Rosa TF, Hörner A, and Hörner R. 2020. Drug  
797 repositioning an alternative for the treatment of coronavirus COVID-19. *International  
798 Journal of Antimicrobial Agents*:105969. DOI 10.1016/j.ijantimicag.2020.105969.
- 799 Sifuentes-Rodriguez E, and Palacios-Reyes D. 2020. COVID-19: The outbreak caused by a new  
800 coronavirus. *Boletín Médico Del Hospital Infantil De México* 77:47-53. DOI  
801 10.24875/bmhim.20000039.
- 802 Siordia JA. 2020. Epidemiology and Clinical Features of COVID-19: A Review of Current  
803 Literature. *Journal of Clinical Virology*:104357. DOI 10.1016/j.jcv.2020.104357.
- 804 Stern D, López-Olmedo N, Pérez-Ferrer C, González-Morales R, Canto-Osorio F, and  
805 Barrientos-Gutiérrez T. 2020. Revisión rápida del uso de cubrebocas quirúrgicos en

- 806 ámbito comunitario e infecciones respiratorias agudas. *Salud Pública de México*. DOI  
807 10.21149/11379.
- 808 Torales J, Higgins M, Castaldelli-Maia JM, and Ventriglio A. 2020. The outbreak of COVID-19  
809 coronavirus and its impact on global mental health. *International Journal of Social  
810 Psychiatry*:20764020915212-20764020915212. DOI 10.1177/0020764020915212.
- 811 Torres I, and Sacoto F. 2020. Localising an asset-based COVID-19 response in Ecuador. *The  
812 Lancet*. DOI 10.1016/S0140-6736(20)30851-5.
- 813 Trujillo A. 2020. Response to Wen and Li. Anesthesia Procedure of Emergency Operation for  
814 Patients with Suspected or Confirmed COVID-19 (DOI: 10.1089/sur.2020.040). *Surg  
815 infect, (Larchmt)*. DOI 10.1089/sur.2020.088.
- 816 van Doremalen N, Bushmaker T, Morris DH, Holbrook MG, Gamble A, Williamson BN, Tamin  
817 A, Harcourt JL, Thornburg NJ, Gerber SI, Lloyd-Smith JO, de Wit E, and Munster VJ.  
818 2020. Aerosol and Surface Stability of SARS-CoV-2 as Compared with SARS-CoV-1.  
819 *New England Journal of Medicine*. DOI 10.1056/NEJMc2004973.
- 820 Vega-Vega O, Arvizu-Hernández M, Domínguez-Cherit JG, Sierra-Madero J, and Correa-Rotter  
821 R. 2020. Prevención y control de la infección por coronavirus SARS-CoV-2 (Covid-19)  
822 en unidades de hemodiálisis. *Salud Pública de México*. DOI 10.21149/11330.
- 823 Wu D, Wu T, Liu Q, and Yang Z. 2020. The SARS-CoV-2 outbreak: What we know.  
824 *International Journal of Infectious Diseases* 94:44-48. DOI 10.1016/j.ijid.2020.03.004.
- 825 Xu B, Gutierrez B, Mekaru S, Sewalk K, Goodwin L, Loskill A, Cohn EL, Hswen Y, Hill SC,  
826 Cobo MM, Zarebski AE, Li S, Wu CH, Hlland E, Morgan JD, Wang L, O'Brien K,  
827 Scarpino SV, Brownstein JS, Pybus OG, Pigott DM, and Kraemer MUG. 2020.

828 Epidemiological data from the COVID-19 outbreak, real-time case information. *Scientific*  
829 *Data* 7. DOI 10.1038/s41597-020-0448-0.

830 Zambrano LI, Fuentes-Barahona IC, Bejarano-Torres DA, Bustillo C, Gonzales G, Vallecillo-  
831 Chinchilla G, Sanchez-Martínez FE, Valle-Reconco JA, Sierra M, Bonilla-Aldana DK,  
832 Cardona-Ospina JA, and Rodríguez-Morales AJ. 2020. A pregnant woman with COVID-  
833 19 in Central America. *Travel Medicine and Infectious Disease*:101639. DOI  
834 10.1016/j.tmaid.2020.101639.

835 Zhu N, Zhang D, Wang W, Li X, Yang B, Song J, Zhao X, Huang B, Shi W, Lu R, Niu P, Zhan  
836 F, Ma X, Wang D, Xu W, Wu G, Gao GF, and Tan W. 2020. A novel coronavirus from  
837 patients with pneumonia in China, 2019. *New England Journal of Medicine* 382:727-733.  
838 DOI 10.1056/NEJMoa2001017.

839

840



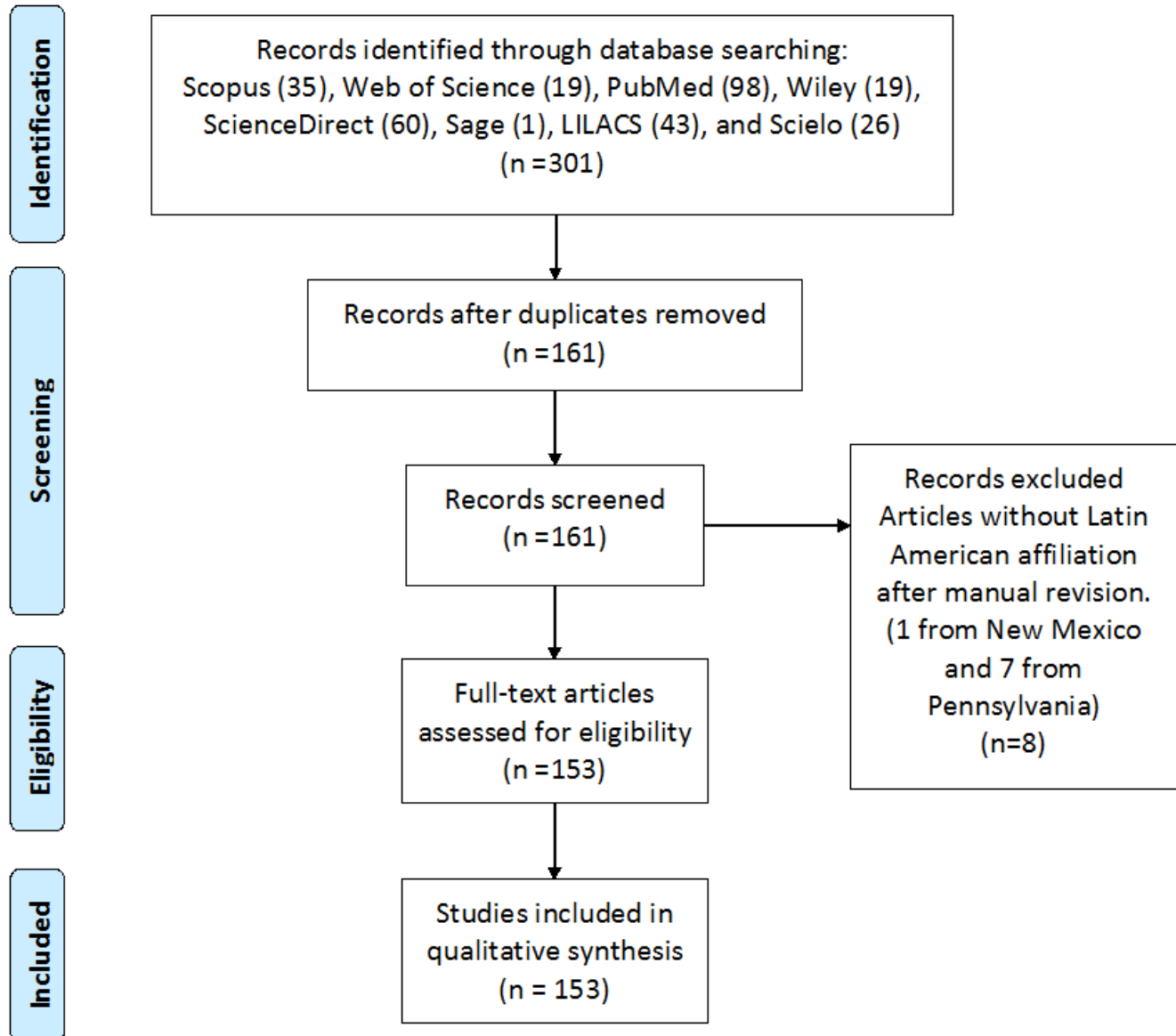
# Figure 1

PRISMA Flow diagram of selection process of COVID-19 or SAR-CoV-2 publications containing researchers with Latin American affiliation.

Identification stage was performed on April 10, 2020.



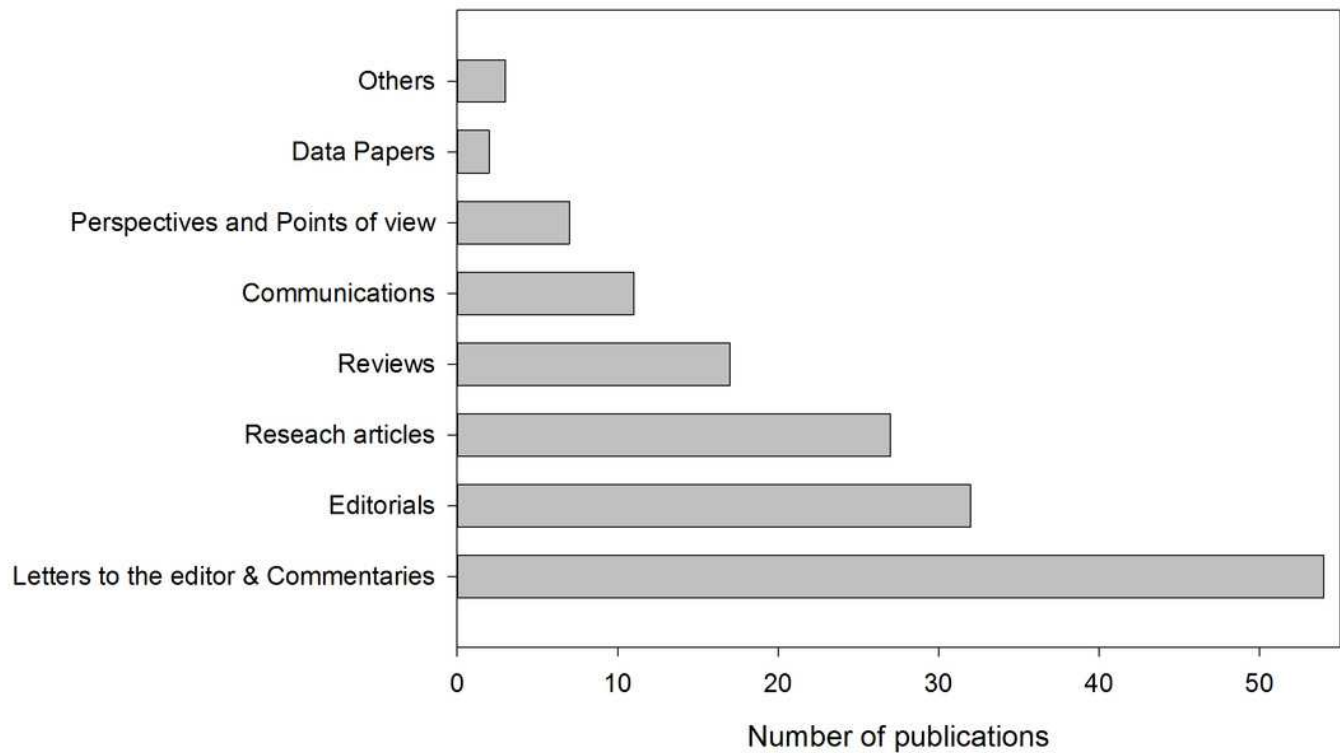
## PRISMA 2009 Flow Diagram



## Figure 2

Classification of publications by category

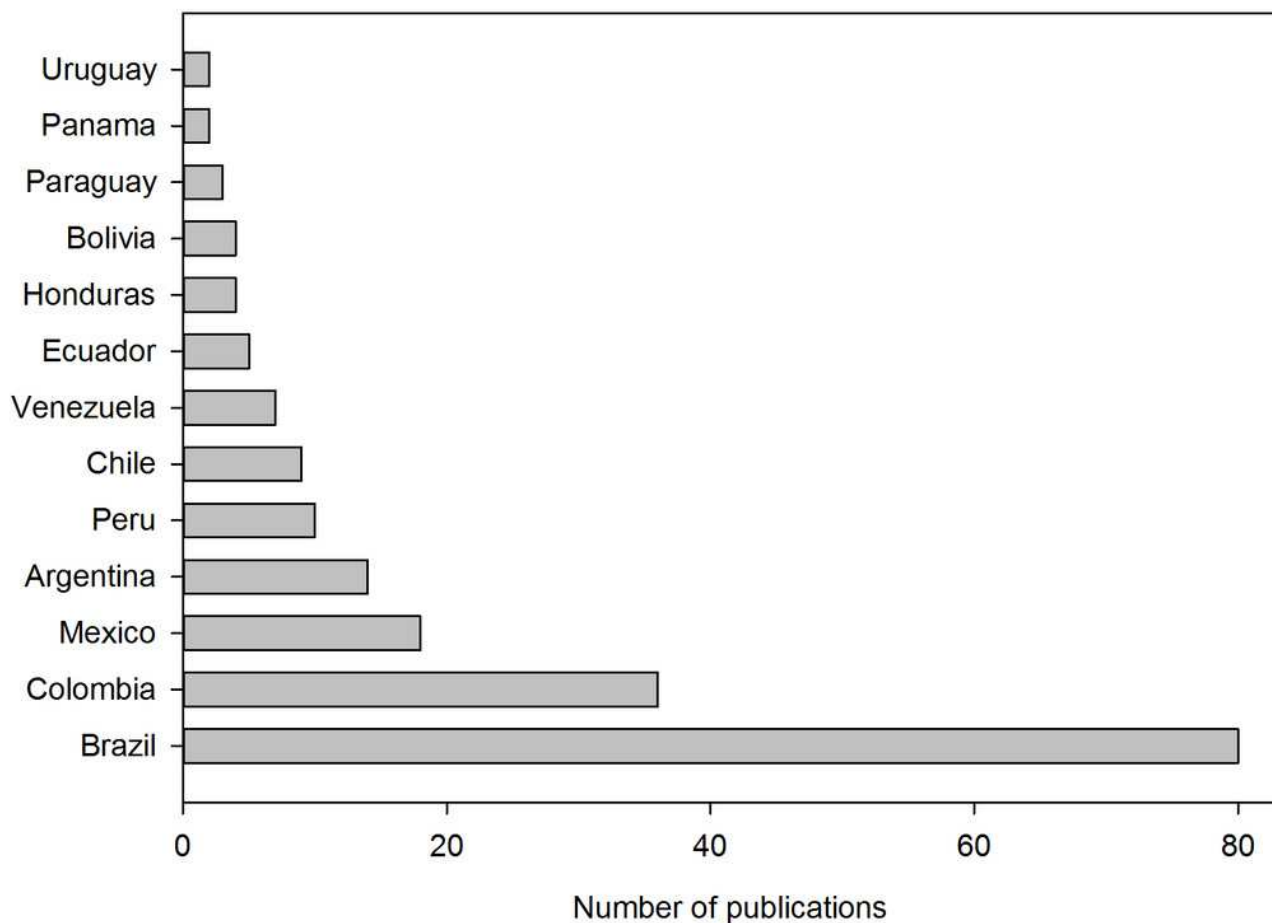
Other publications refer to: Consensus statement, Contribution, and Technical note.



## Figure 3

Classification of publications according to the national affiliation.

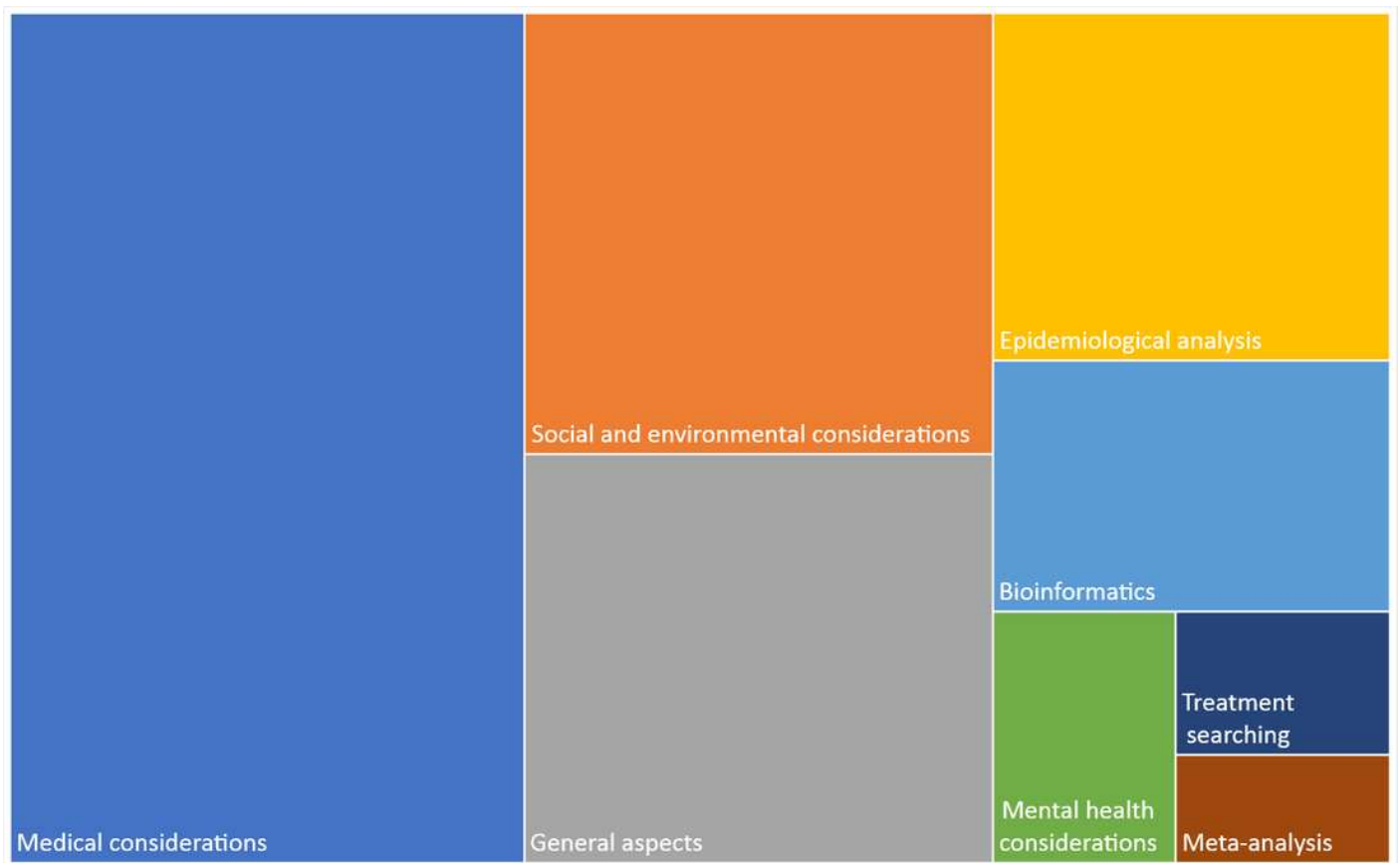
Several authors from the same country in a publication were counted as one contribution to the country. Publications with authors from different countries were counted as one for each country. Latin American countries not shown had no publications until April 10, 2020.



## Figure 4

Classification of publications by topic.

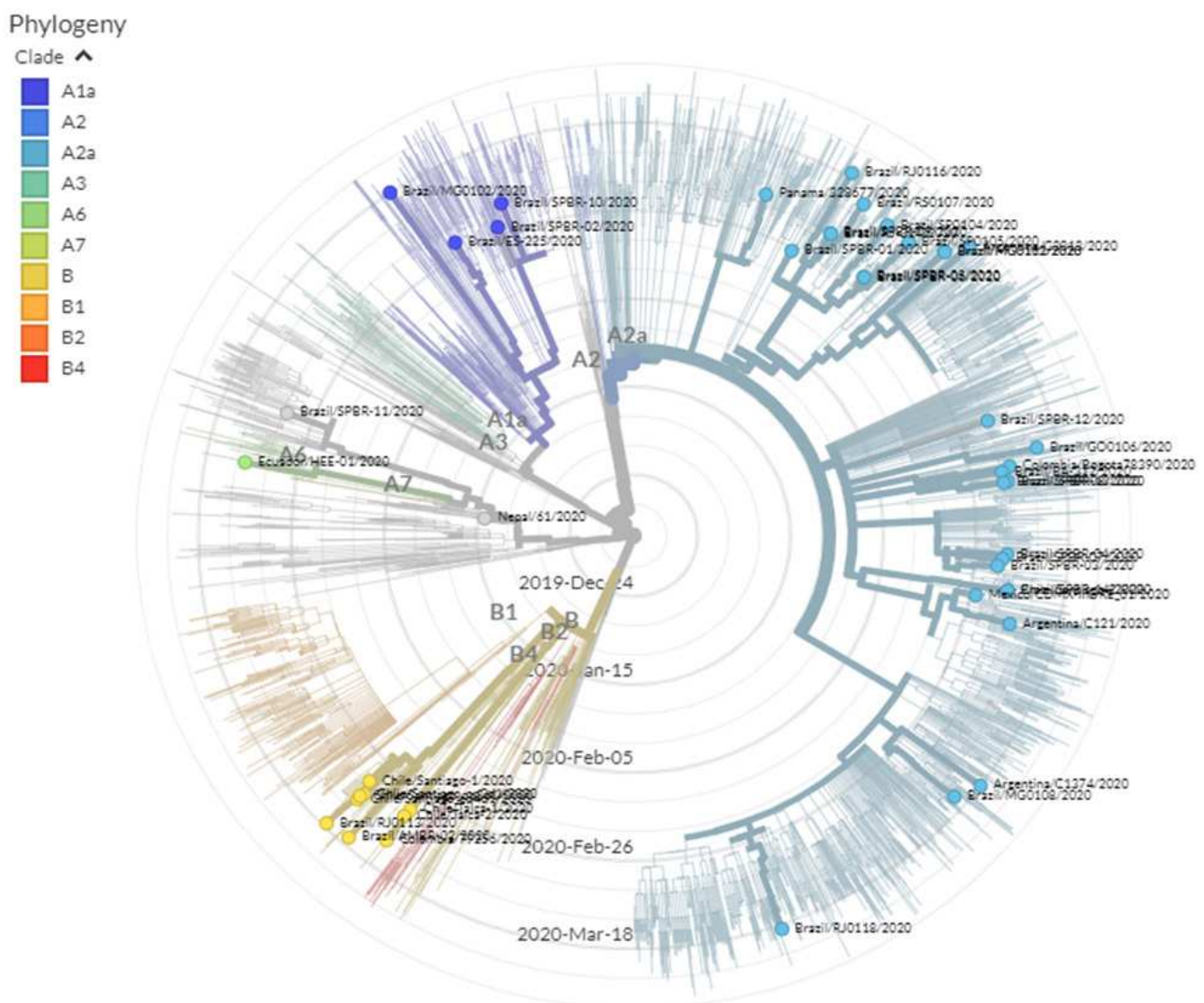
Medical considerations refer to surgery recommendations, diagnosis, comorbidities, medical guidelines, dentistry considerations, among others. The general aspects include zoonotic links, spreading, origin, disease, surveillance, among others. Bioinformatics refers to molecular and phylogenetic analyses, molecular simulations, genetic annotations, among others.



## Figure 5

Phylogenetic location of genome sequences of some strains isolated in Latin America in the SARS-CoV-2 phylogenetic tree.

The phylogenetic tree was generated and adapted from the GISAID database (Hadfield *et al.*, 2018; Sagulenko *et al.*, 2018). The tree was retrieved on April 20, 2020.



**Table 1** (on next page)

Summary of the COVID-19 outbreak affectation in the Latin American countries.

Total cases and total deaths are reported until April 20, 2020 (Johns Hopkins University 2020).

<b>Country</b>	<b>First case</b>	<b>Cases</b>	<b>Deaths</b>
Argentina	Mar 3	2941	136
Bolivia	Mar 10	564	33
Brazil	Feb 25	40581	2845
Chile	Mar 3	10507	139
Colombia	Mar 6	3963	189
Costa Rica	Mar 6	662	6
Cuba	Mar 11	1087	36
Dominican Rep.	Mar 1	4964	235
Ecuador	Feb 14	10128	507
El Salvador	Mar 18	218	7
Guatemala	Mar 13	289	7
Haiti	Mar 2	47	3
Honduras	Mar 11	477	46
Mexico	Feb 27	8261	686
Nicaragua	Mar 18	10	2
Panama	Mar 8	4467	126
Paraguay	Mar 7	208	8
Peru	Mar 6	16325	445
Uruguay	Mar 13	528	10
Venezuela	Mar 13	256	9
	Total	106483	5475

1



**Table 2** (on next page)

Summary of genome sequences of SARS-CoV-2 strains isolated in Latin America and collected in GISAID database.

Information updated on April 20, 2020 (Hadfield *et al.* 2018; Sagulenko *et al.* 2018).

Country	Submitting lab	Location	Total
Argentina	Instituto Nacional Enfermedades Infecciosas C.G.Malbran	Argentina	3
Brazil	Bioinformatics Laboratory - LNCC	Goiais	1
		Minas Gerais	5
		Rio de Janeiro	7
		Rio Grande do Sul	1
		São Paulo	4
	Instituto Adolfo Lutz, Interdisciplinary Procedures Center, Strategic Laboratory	Brasilia	1
		Sao Paulo	2
		Sao Paulo	11
	Instituto Oswaldo Cruz FIOCRUZ - Laboratory of Respiratory Viruses and Measles (LVRS)	Maceio	1
		Feira de Santana	2
		Brasilia	5
		Vila Velha	1
		Niteroi	1
		Rio de Janeiro	6
Florianopolis		1	
Joinville		1	
Laboratorio de Ecologia de Doencas Transmissiveis na Amazonia, Instituto Leonidas e Maria Deane - Fiocruz Amazonia	Manaus	1	
Laboratory of Virology	Brasilia	1	
Chile	Instituto de Salud Publica de Chile	Santiago	2
		Talca	2
	MSSH Pathogen Surveillance Program	Santiago	3
Colombia	Instituto Nacional de Salud Universidad Cooperativa de Colombia Instituto Alexander von Humboldt Imperial College-London London School of Hygiene & Tropical Medicine	Antioquia	1
		Bogota	1
Ecuador	Institute of Microbiology, Universidad San Francisco de Quito	Pichincha	3
		Quito	1
Mexico	Instituto de Diagnostico y Referencia Epidemiologicos (INDRE)	Chiapas	1
		Estado de Mexico	1
		Mexico City	2
		Puebla	1
		Queretaro	1
	Instituto Nacional de Ciencias Medicas y Nutricion Salvador Zubiran	Mexico City	5
	Instituto Nacional de Enfermedades Respiratorias	Mexico City	5
Laboratorio Central de Epidemiología-DLVIE / Laboratorio de Secuenciación-Centro de Instrumentos. Instituto Mexicano del Seguro Social	Chihuahua	1	
Nepal <sup>a</sup>	The University of Hong Kong	Kathmandu	1
Panama	Gorgas Memorial Institute for Health Studies	Panama City	1
Peru	Laboratorio de Referencia Nacional de Biotecnología y Biología Molecular. Instituto Nacional de Salud Peru	Lima	2
Uruguay	Microbial Genomics Laboratory, Institut Pasteur Montevideo	Montevideo	9
Total general			98

- 1 <sup>a</sup>Nepal was included due to researchers with Colombian and Honduran affiliations contributed in
- 2 its genome sequencing (Sah *et al.* 2020).