

Manuscript Title:

Early Awake Prone and Lateral Position in Non-intubated Severe and Critical Patients with COVID-19 in Wuhan: A Respective Cohort Study

Authors:

Wei Dong^{1,2,#}, Yiping Gong^{2,#}, Juan Feng², Lang Bai^{2,3}, Haomiao Qing⁴, Peng Zhou⁴, Yu Du^{2,5}, Junchen Zhu^{2,6}, Shanling Xu^{1,2,*}

Affiliations

1. Critical Care Medicine Department, Sichuan Cancer Hospital & Institute, Sichuan Cancer Center, School of Medicine, University of Electronic Science and Technology of China, Chengdu, China 610041
2. Department of Infectious Disease, Renmin Hospital of Wuhan University, Wuhan, Hubei, China 430060
3. Center of Infectious Diseases, West China Hospital, Sichuan University, Chengdu, Sichuan, China 610041
4. Radiology Department, Sichuan Cancer Hospital & Institute, Sichuan Cancer Center, School of Medicine, University of Electronic Science and Technology of China, Chengdu, China 610041
5. Emergency department and intensive care unit, West China School of Public Health, West China Fourth Hospital, Sichuan University, Chengdu, Sichuan, China 610041
6. Intensive Care Unit, Affiliated Hospital of Chengdu University, Chengdu, Sichuan, China 610041

#: The first two authors contributed equally to this study

Corresponding author: Shanling Xu, M.D. Critical Care Medicine Department, Sichuan Cancer Hospital, Affiliated Cancer Hospital to University of Electronic Science and Technology of China, Chengdu, Sichuan, China 610041. Tel: +86-28-85420949, Email: xushanling_30@163.com

Author contributions: L.B., S.L.X., Y.P.G., conceived the study. W.D., J.F., collected the data. H.M.Q., P.Z., evaluated the CT images. W.D., S.L.X., J.F., Y.D., J.C.Z., conducted data analysis. S.L.X., W.D., L.B., drafted the manuscript. Y.P.G., L.B., S.L.X. and W.D revised the draft of the manuscript. All authors read and approved the final manuscript.

Funding: The authors received no financial support for the research, authorship, and publication of this article.

Abstract

Background

Previous studies suggest applying prone position (PP) and lateral position (LP) in patients with severe acute respiratory distress syndrome (ARDS) for their efficacy in improving oxygenation and lung recruitment. This paper aims to share clinical experiences and outcome of using PP and LP in combination with oxygen therapy (OT) and Non-invasive ventilation (NIV) in severe and critical patients with COVID-19.

Methods

Clinical data of 48 severe and critical patients have been retrieved from medical records and reviewed. The primary outcome is the survival rate. Secondary outcome is the rate of patients requiring intubation.

Results

In total, 25 patients were finally included in the study. The mean respiratory rate of all 25 patients decreased from 28.4 breaths/min to 21.3 breaths/min. CT results showed increase in lung recruitment. All patients tolerated PP and LP well. No deterioration or severe adverse events associated with PP and LP occurred. All patients recovered and survived without intubation. Follow-up to date showed that all patients have been discharged except one with mild symptoms and positive RNA test.

Conclusion:

Clinical outcomes of early application of PP and LP in combination with OT and NIV in severe and critical patients with COVID-19 indicated well tolerance of the therapy and resulted in improving patients' oxygenation in a safe and effective manner. Therefore, this strategy can be explored as an early intervention in managing patients in early stage of disease development under the context of pandemic and limited medical resources.

Introduction

The outbreak of a novel coronavirus disease (COVID-19) started in Wuhan, China in December, 2019 and has since rapidly impacted many countries as a pandemic. According to WHO's COVID-19 situation report on May 4, 2020, there are nearly 3.44 million confirmed cases worldwide, with 239,604 deaths.¹ According to the findings in China, about 14% of COVID-19 patients were severe and 5% were critical and the overall case-fatality rate among critical cases reached 49.0%.² These findings have greatly stressed the health care system globally. So far there is no specific antiviral drugs for the treatments of COVID-19. Whilesome studies³⁻⁶ have reported on the clinical characteristics and outcomes of critically ill patients, the challenges of managing these patients remain particularly in the context of limited medical resources and the global surge of patients. Evaluating the effects of supportive therapies becomes one of the priorities of research.⁷

Current Chinese clinical management guidelines⁸ for COVID-19 suggest treatment including rest in bed, oxygen therapy, antiviral medication, and mechanical ventilation. For critical patients with severe ARDS, many guidelines⁸⁻¹¹ recommend prone ventilation for 12-16 hours a day, especially for adult patients. This is in alignment with previous Randomized Controlled Trials (RCTs) and studies^{12,13} that showed the impact of prone position in improving oxygen and lung recruitment in mechanically ventilated patients with severe ARDS.

Based on previous clinical experiences in managing patients with severe acute respiratory infection, we used early prone position (PP) and lateral position (LP) in combination with oxygen therapy (OT) and non-invasive ventilation (NIV), as supportive therapies, to treat severe and critical patients with COVID-19. We found these therapies to be effective interventions in early management of patients with critical and/or severe symptoms of COVID-19. The aim of this study is to share the clinical characteristics and outcomes of severe and critical patients using these interventions. The primary outcome is the survival rate of the patients. Secondary outcome is the rate of patients requiring invasive mechanical ventilation.

The study was approved by the Institutional Review Board (IRB) for clinical research at Renmin Hospital of Wuhan University (WDRY2020-K125). Written informed consent was waived as this is a designated hospital for treatment of COVID-19 patients.

Methods

Study Design and Participants

This observational, retrospective study was completed at Renmin Hospital of Wuhan University, one of the designated hospitals in Wuhan to treat patients with COVID-19. In late January, 2020, with the rapid increase of patients in Wuhan, medical teams from Sichuan Province were mobilized and sent to Wuhan to support local hospitals. On February 5, 2020, our team took over Ward No. 6 (a temporary ICU). Between February 5 and February 29, 2020, there were a total of 48 severe and critical patients with laboratory-confirmed diagnosis of COVID-19. Severe and critical patients were defined according to the Chinese guidelines⁸. Patients with respiratory distress ($RR \geq 30$ breaths/min), or $SpO_2 \leq 93\%$ at rest, or $PaO_2/FiO_2 \leq 300$ mmHg were defined severe; while patients with respiratory failure requiring mechanical ventilation, or shock, or other organ failure requiring intensive care were critical. All 48 patients received standard treatment including antiviral medication, antibiotics when necessary, anticoagulation and nutritional support. Oxygen therapy using different devices including nasal prongs (NP), mask, high flow nasal cannula (HFNC) was provided to all patients based on their status of oxygenation. Non-invasive ventilation was provided based on patients' needs. Humidification was also added for all patients.

In addition, for patients with $PaO_2/FiO_2 < 200$, or whose CT results indicated acute exudation of both lungs, a daily PP session of more than 10 hours (PP session > 10 hours/day) was ordered. For other patients, a daily PP session of more than 4 hours (PP session > 4 hours/day) was ordered. Nurses provided instructions to patients as how to perform proper PP. Changes in vital signs, adverse events, after PP were observed and documented by the nurses. No sedation was provided. Actual hours of PP sessions were self-reported by the patients daily and further checked and documented by nurses. For patients who did not tolerate PP sessions as ordered, a combination with PP and LP, or LP only was suggested instead. In addition, for critical patients with HFNC or NIV support, audits by nurses or peer patients were encouraged to ensure compliance.

Data Collection

All the medical and nursing records, laboratory findings, and radiological examinations for those 48 patients have been reviewed including information during the clinical course, from onset, admission to the hospital, to admission to unit. Demographic, treatment, and outcome data have been collected and analyzed.

Analysis

The aim of this observational study is to share the clinical outcomes of severe and critical patients treated with PP and LP in combination with OT and NIV as supportive therapies, no hypothesis as in the RCTs has been designed or implemented to include certain sample sizes. We have included all available cases on the unit.

Patients were divided into severe and critical groups based on severity and comparison was made between the two groups. Statistical analyses were conducted using SAS statistical software (version 9.3). The continuous variables are presented as mean \pm standard deviation for normally distributed data or median \pm interquartile range for non-normal data, and the categorical variables are reported as number (percentage). The change of respiratory rate (RR), CT score before and after the PP and LP, were carried out using paired t-tests.

CT was evaluated by a semi-quantitative score system that assessed each segment of the lobes for the degree of segmental involvement and abnormalities. The scoring is 1) No involvement score 0; involvement $<1/3$ to a lobe score 1, involvement $\geq 1/3$ and $\leq 2/3$ to a lobe score 2; involvement $>2/3$ to a lobe score 3; 2) abnormalities: no abnormality score 0; major abnormality as ground glass opacity (GGO) score 1; major abnormality as consolidation as major abnormality score 2. For each segment, the score is from 1 to 5. In total, the maximum total score for two lungs is 100. Two senior radiologists with more than 5 years of working experience evaluated the images independently according to the scoring system and the mean score of the two was accepted as final. For any difference of higher than 5 scores between two evaluations, the images were reviewed by a third radiologist and a mutually agreed score will be accepted thereafter.

Results

Among the 48 patients, 2 were excluded due to an early transfer for non-medical reasons within 5 days. Another 8 critical patients were excluded due to failure in PP nor LP without intubation. Among them, 1 ended up using invasive mechanical ventilation and prone position, and survived. The other 7 received NIV and died due to disease progression. In total, 38 patients used PP and/or LP in combination with oxygen therapy and NIV. However, 13 of them quickly changed from severe to mild within 2-5 observation days and got discharged, therefore were excluded

in this study. Finally 25 patients were enrolled, including 12 severe and 13 critical. (Figure 1). The clinical charts of adult patients with laboratory-confirmed COVID-19 admitted in the ICU were reviewed. The mean age was 49.0 ± 14.1 years in the severe group, while 59.5 ± 16.7 years in the critical group (Table 1). 9 (36%) have comorbidities. More than 50% of patients have hypercapnia. Less than 50% of patients had a decrease in CD4+ and CD8+ and abnormal D-dimer test results. For the Acute Physiology and Chronic Health Evaluation II (APACHE II) score that is greater than 15, there were 3 in severe group and 11 in critical group. While for the median Sequential Organ Failure Assessment (SOFA) score that is greater than 2, there were 6 in severe group and 11 in critical group. All patients were provided antiviral treatment, while 14 (56%) were treated with antibiotics and 12 (48%) were treated with glucocorticoid. All patients received oxygen therapy, with 10 (40%) used NP, 6 (24%) simple face mask, and 6 (24%) HFNC. 3 (12%) patients required NIV support. Among 25 patients, 21 tolerated a daily PP session for 1-14 hours (Table 2, Table 3). Out of the 21 that tolerated a daily PP session, 6 tolerated a daily PP session less than 2 hours, and added a daily LP for 4 hours and 4 only tolerated a daily LP session for 4 hours (all of older ages, 56, 78, 79 and 82 years respectively). During the study period, the mean daily PP session was 6.4 ± 3.7 hours in critical group, and 3.6 ± 1.6 hours in severe group. 9 had adverse events after PP and/or LP session, including 4 with dyspnea and sternal pain, 1 scrotal pain, 1 with lumbago that was relieved after adjusting the position, and 1 with itchiness at chest wall skin.

The mean respiratory rate (RR) for all patients decreased from 28.4 ± 3.5 breaths/min to 21.3 ± 1.3 breaths/min after various durations of PP and/or LP sessions. Evaluation of CT results using the score system showed improvement in all patients, with a mean score decreasing from 41.8 ± 19.2 to 29.3 ± 16.8 . For all patients, no new lesion was identified in the CT results (Table 2, Figure 2). No further deterioration occurred and no invasive intubation was required for all patients. All 25 patients survived. By March 17, 2020, all 25 patients have changed from severe to mild. By April 16, 2020, all patients have been discharged. Further follow-up up to May 3, 2020 indicated that no patients relapsed.

Discussion

One of the pathophysiological features of ARDS in severe patients is lung inhomogeneity.¹⁴ Because of this, any delay in treatment will further cause reduced lung compliance, ventilation-perfusion imbalance, and decreased lung

volume, which can lead to critical situations such as severe hypoxemia. According to the results of the autopsy of critical COVID-19 patients in Wuhan, China, main pathological features include exudation, infiltration of macrophages, and fibrosis in the lungs. The presence of mucous plugs with fibrinous exudate in respiratory tracts including distal regions is a distinctive feature of COVID-19.¹⁵ The clinical data of patients, however, showed that COVID-19 will not cause “typical” ARDS symptoms, which might partially explain the poor response of critical COVID-19 patients to lung recruitment and positive end-expiratory pressure (PEEP) associated with mechanical ventilation.¹⁶ Therefore, oxygen therapy and mechanical ventilation cannot fully resolve the pathology of ARDS caused by COVID-19 due to their working mechanisms. The use of prone position, however, can mobilize copious secretions and promote forward drainage toward the central airways for clearance.¹⁷ PP also improves lung inhomogeneity, redistribution of perfusion¹⁸, lung compliance, recruitment-to-inflation ratio, and lung recruitment.^{19,20} Therefore, for severe ARDS caused by COVID-19, many clinical guidelines⁸⁻¹¹ recommend prone position for critical patients on mechanical ventilation.

Most studies on prone position were focusing on mechanically ventilated patients with severe ARDS. Few studies^{21,22} explored the effect of lateral position as well. In recent years, some studies^{23,24} reported the efficacy of prone position in combination with HFNC or NIV in severe and moderate ARDS and suggested that these interventions can help prevent intubation in some patients. During the treatment of patients with COVID-19, we’ve been thinking whether we can apply PP and/or LP as an early intervention in managing severe and even critical patients with severe hypoxemia and/or hypercapnia. We also noticed that most clinical guidelines for ARDS do not clearly recommend or suggest applying prone position or lateral position in patients with mild ARDS. One possible reason for this lack of clinical guidelines suggesting the use of PP and/or LP could be because most of the patients with severe ARDS, admitted into the ICU, require intubation. Also, patients with mild to moderate symptoms rarely get admitted into ICU. In previous studies on prone ventilation in treating ARDS patients, patients included in the studies have various diseases, clinical courses, or severity, thereby making it hard to draw conclusions that are comparable due to various differences.²⁵ This time, despite of two time-related phenotypes of COVID-19 pneumonia,²⁶ as our patients are all COVID-19 patients, their pathological abnormalities are almost the same, it enables us to better observe and analyze the ARDS associated with COVID-19.

Based on the clinical practices implemented during the study period, we found that after using PP and LP, patients' oxygenation was improved. With the rapid increase of severe and critical patients who require oxygen therapy or higher respiratory support, current global medical resources are insufficient and might not provide adequate support. As a result, if we wait until patients deteriorate to a critical stage, where they require mechanical ventilation and prone position, significant medical resources will be needed and utilized (e.g. ventilators, staff for intubation, proper positioning and monitoring, regular suctioning, etc). This will increase the workload of the medical staff. In addition, due to the strong transmission of COVID-19, proper personal protective equipment (PPE) is in huge demand. The inability to match the supply with the demand associated with the global shortage of PPE will, inevitably, increase the risk of exposure for clinical staff. If we consider use PP and/or LP in combination with oxygen therapy or NIV earlier in their stage of disease development, the patients might tolerate better and perform PP and/or LP without sedation and nursing support. Although in this study, the PaO₂/FiO₂ value only indicated the improvement of patients' status at one particular moment post PP and/or LP sessions, the CT images also showed the improvement from another perspective. No new lesions were identified and no severe adverse events occurred. It should also be noted that all the clinical staff of our team have cover-all suits as proper PPE during procedures and daily practice.

In terms of daily PP sessions for treatment of patients with severe ARDS, prior studies^{27,28} have provided various recommendations around 6-16 hours with the longest session lasting upto 20 hours. Another meta-analysis²⁹ about using prone position on patients with moderate to severe ARDS found that prone ventilation for at least 12 hours per day can improve patients' oxygenation and prognosis. The patients in the meta-analysis, however, were all on mechanical ventilation and sedated. The patients in our study, on the contrary, were conscious and used active range of motion. In our actual clinical practice, we further tailored daily PP and/or LP sessions for all patients based on their tolerance and response. For patients with severe ARDS, the requirement was to use at least 4 hours of prone position plus any other active position. For patients who were recovering quickly, the requirement was to use at least 10 hours of prone position. For critical patients, depending on their situation, the hours of each session varied. The results showed that critical patients tolerated a mean daily PP session of 6 hours during study period. One particular patient even tolerated one PP session of 16 hours.

As this observational study was done during the outbreak, it has some limitations. First, there were limited medical resources which impacted the oxygen support provided to patients. It should also be noted that the study was conducted in China, and thereby the environment and resources might be different from other countries. Second, the sample size is small considering the nature of an observational study. Although we noticed that a single case report³⁰ and a pilot study³¹ have reported on similar strategy used in this study, our study reported on the clinical data of severe and critical patients during a long period of treatment and follow-up. Thirdly, some specific data about tests were missing. However, the limited findings still indicated positive effects of using PP and LP in managing patients with COVID-19. It would require large scale prospective clinical trials to explore the generalizability of these interventions among other COVID-19 patients in other countries and/or environments. In conclusion, using prone position and lateral position among patients at the early stage of the disease required less medical resources, and the outcome of this study suggested that the risks of generating new lesions and/or complications were low. Therefore, it might be beneficial to consider this as an early intervention, especially under the context of pandemic and limited medical resources.

Acknowledgments

We thank all patients involved in the study.

Disclosure

All authors have declared no conflicts of interest.

References

1. WHO, Coronavirus disease 2019 (COVID-19) Situation Report – 105, May 4, 2020. Available from Accessed https://www.who.int/docs/default-source/coronaviruse/situation-reports/20200504-covid-19-sitrep-105.pdf?sfvrsn=4cdda8af_2 on May 4, 2020.
2. Wu Z, McGoogan JM. Characteristics of and Important Lessons From the Coronavirus Disease 2019 (COVID-19) Outbreak in China: Summary of a Report of 72 314 Cases From the Chinese Center for Disease Control and Prevention. JAMA. 2020;323 (13):1239–1242. doi:10.1001/jama.2020.2648.
3. Yang X, Yu Y, Xu J, et al. Clinical course and outcomes of critically ill patients with SARS-CoV-2 pneumonia in Wuhan, China: a single-centered, retrospective, observational study. Lancet Respir Med 2020 February 24 (Epub ahead of print).
4. Bhatraju PK, Ghassemieh BJ, Nichols M, et al. Covid-19 in Critically Ill Patients in the Seattle Region - Case Series. N Engl J Med 2020. Published online March 30, 2020. doi: 10.1056/NEJMoa2004500
5. Arentz M, Yim E, Klaff L, et al. Characteristics and Outcomes of 21 Critically Ill Patients With COVID-19 in Washington State. JAMA. Published online March 19, 2020. doi:10.1001/jama.2020.4326
6. Grasselli G, Zangrillo A, Zanella A, et al. Baseline Characteristics and Outcomes of 1591 Patients Infected With SARS-CoV-2 Admitted to ICUs of the Lombardy Region, Italy. JAMA. Published online April 06, 2020. doi:10.1001/jama.2020.5394
7. WHO, COVID 19 Public Health Emergency of International Concern (PHEIC) Global research and innovation forum: towards a research roadmap. February 14, 2020. Available from https://www.who.int/blueprint/priority-diseases/key-action/Global_Research_Forum_FINAL_VERSION_for_web_14_feb_2020.pdf?ua=1. Accessed on April 11, 2020.
8. General Office of National Health Committee. Office of state administration of traditional Chinese medicine. Notice on the issuance of a programme for the diagnosis and treatment of novel coronavirus (2019-nCoV) infected pneumonia (trial fifth edition) (2020-02-26) [EB/OL]. Available from <http://bgs.satcm.gov.cn/zhengcewenjian/2020-02-06/12847.html>. Accessed on April 11, 2020.
9. WHO. Clinical management of severe acute respiratory infection when novel coronavirus (nCoV) infection is suspected: interim guidance, 13 March 2020. Published March 13, 2020. Available from

<https://www.who.int/docs/default-source/coronaviruse/clinical-management-of-novel-cov.pdf>. Accessed on April 11, 2020

10. The Australian and New Zealand Intensive Care Society (ANZICS). COVID-19 Guidelines. Published March 2020. Available from <https://www.anzics.com.au/wp-content/uploads/2020/03/ANZICS-COVID-19-Guidelines-Version-1.pdf>. Accessed on April 11, 2020.
11. Cressoni M, Cadringer P, Chiurazzi C, et al. Lung inhomogeneity in patients with acute respiratory distress syndrome[J]. Am J Respir Crit Care Med, 2014,189(2):149-158.DOI: 10.1164/rccm.201308-1567OC.
12. Guerin C, Reignier J, Richard JC, Beuret P, Gacouin A, Boulain T, Mercier E, Badet M, Mercat A, Baudin O, et al. Prone positioning in severe acute respiratory distress syndrome. N Engl J Med. 2013;368(23):2159–68.
13. Guerin C, Beuret P, Constantin JM, Bellani G, et al. A prospective international observational prevalence study on prone positioning of ARDS patients: the APRONET (ARDS prone position network) study. Intensive Care Med. 2018 Jan;44(1):22-37. doi: 10.1007/s00134-017-4996-5. Epub 2017 Dec 7.
14. Cressoni M, Cadringer P, Chiurazzi C, et al. Lung inhomogeneity in patients with acute respiratory distress syndrome. Am J Respir Crit Care Med. 2014;189(2):149-158
15. Wang CF, Xie J, Zhao L, et al. Alveolar Macrophage Activation and Cytokine Storm in the Pathogenesis of Severe COVID-19. Research Square 2020:2020.03.25. doi:10.21203/rs.3.rs-19346/v1.
16. Gattinoni L, Coppola S, Cressoni M, Busana M, Rossi S, Chiumello D. Covid-19 Does Not Lead to a "Typical" Acute Respiratory Distress Syndrome. Am J Respir Crit Care Med. 2020 Mar 30. doi: 10.1164/rccm.202003-0817LE. [Epub ahead of print]
17. Chatte G, Sab JM, Dubois JM, Sirodot M, Gaussorgues P, Robert D. Prone position in mechanically ventilated patients with severe acute respiratory failure. Am J Respir Crit Care Med. 1997 Feb;155(2):473-8.
18. Kallet RH. A Comprehensive Review of Prone Position in ARDS. Respir Care. 2015 Nov;60(11):1660-87. doi: 10.4187/respcare.04271.
19. Pan C, Chen L, Lu C, et al. Lung Recruitability in SARS-CoV-2 Associated Acute Respiratory Distress Syndrome: A Single-center, Observational Study. Am J Respir Crit Care Med. 2020 Mar 23. doi:10.1164/rccm.202003-0527LE.
20. Marini JJ, Josephs SA, Mechlin M, Hurford WE. Should Early Prone Positioning Be a Standard of Care in ARDS With Refractory Hypoxemia? Respir Care. 2016 Jun;61(6):818-29. doi: 10.4187/respcare.04562.

21. Tongyoo S, Vilaichone W, Ratanarat R, Permpikul C. The effect of lateral position on oxygenation in ARDS patients: a pilot study. *J Med Assoc Thai*. 2006 Nov;89 Suppl 5:S55-61.
22. T Staudinger, H Losert, P Schellongowski, G Locker, and K Laczika. Physiological effects of lateral steep positioning in critically ill patients suffering from acute respiratory distress syndrome (ARDS). *Crit Care*. 2004; 8(Suppl 1): P35. Published online 2004 Mar 15. doi: 10.1186/cc2502
23. Pérez Nieto, Orlando & Deloya Tomas, Ernesto & Martínez Camacho, Miguel Ángel. (2019). Case Report: Prone Positioning and Nasal High Flow Oxygen Therapy-An Alternative Strategy to Invasive and Non-Invasive Ventilation in a Case of Severe Acute Respiratory Distress Syndrome. *European Scientific Journal*. 15. 1857-7881. 10.19044/esj.2019.v15n3p69.
24. Ding, L., Wang, L., Ma, W. et al. Efficacy and safety of early prone positioning combined with HFNC or NIV in moderate to severe ARDS: a multi-center prospective cohort study. *Crit Care* 24, 28(2020). <https://doi.org/10.1186/s13054-020-2738-5>
25. Bellani G, Laffey JG, Pham T, et al. Epidemiology, patterns of care, and mortality for patients with acute respiratory distress syndrome in intensive care units in 50 countries. *JAMA*. 2016;315:788-800.
26. Gattinoni L, Chiumello D, Caironi P, et al. COVID-19 pneumonia: different respiratory treatment for different phenotypes? *Intensive Care Med*. 2020 doi: 10.1007/s00134-020-06033-2.
27. Gattinoni L, Tognoni G, Pesenti A, et al. Effect of prone positioning on the survival of patients with acute respiratory failure. *N Engl J Med* 2001;345(8):568-573.
28. Mancebo J, Fernández R, Blanch L, et al. A multicenter trial of prolonged prone ventilation in severe acute respiratory distress syndrome. *Am J Respir Crit Care Med* 2006;173(11):1233-1239.
29. Hu SL, He HL, Pan C, et al. The effect of prone positioning on mortality in patients with acute respiratory distress syndrome: a meta-analysis of randomized controlled trials. *Crit Care*. 2014;18(3):R109.
30. Slessarev M, Cheng J, Ondrejicka M, Arntfield R; Critical Care Western Research Group. Patient self-proning with high-flow nasal cannula improves oxygenation in COVID-19 pneumonia [published online ahead of print, 2020 Apr 21]. *Can J Anaesth*. 2020;1-3. doi:10.1007/s12630-020-01661-0
31. Caputo ND, Strayer RJ, Levitan R. Early self-proning in awake, non-intubated patients in the emergency department: a single ED's experience during the COVID-19 Pandemic. *Acad Emerg Med* Published on-line April 22, 2020. [Epub Ahead of Print] <https://doi.org/10.1111/acem.13994>

Figure 1: Study flow Diagram

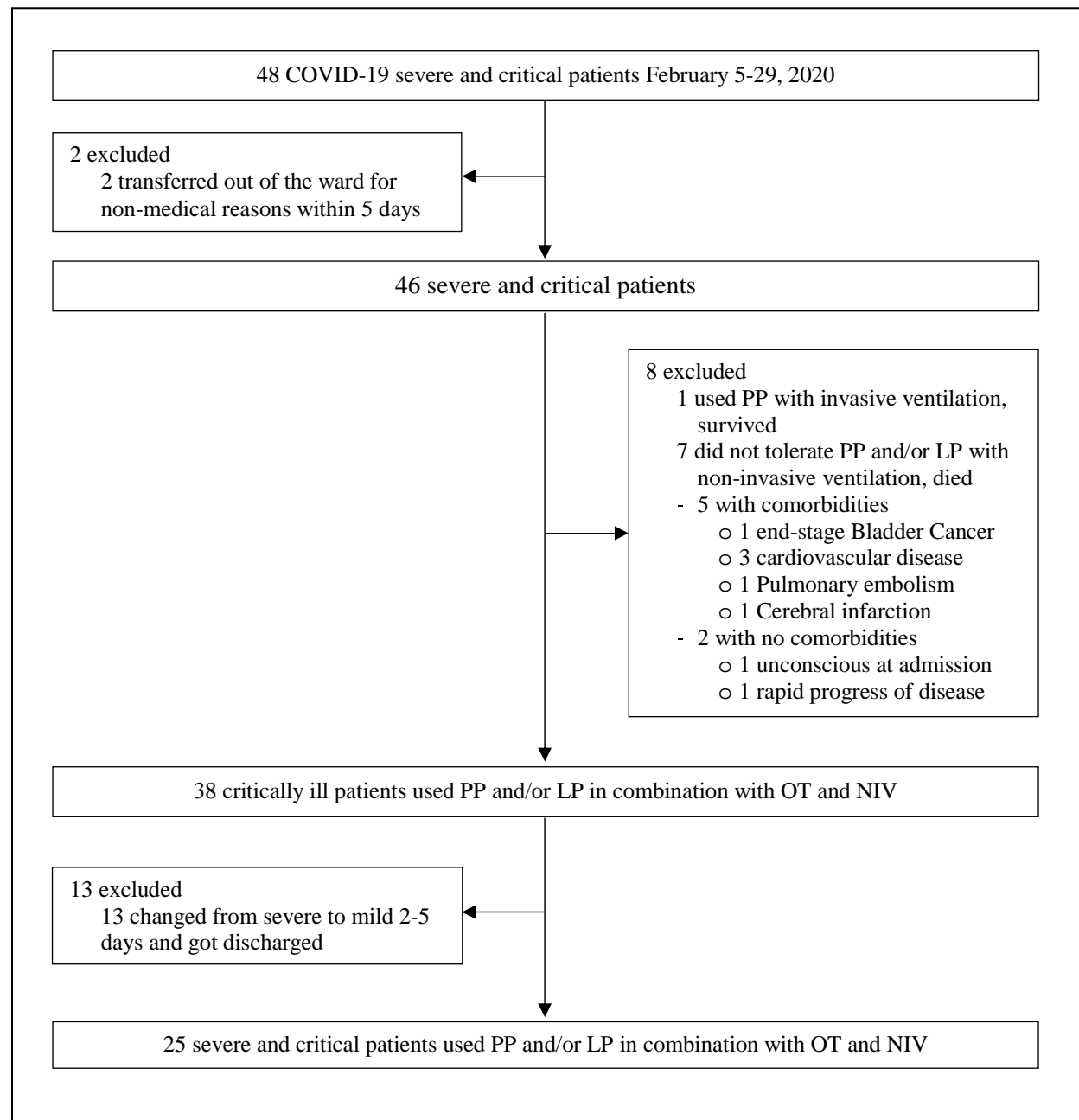


Table 1. Clinical characteristics of the study patients

Characteristic	All Patients (N=25)	Disease Severity	
		Severe (N=12)	Critical (N=13)
Age - n(%)			
Mean	54.4(16.1)	49.0(14.1)	59.5(16.7)
Distribution			
20-40	6 (24.0)	3 (25.0)	3 (23.1)
41-64	14 (56.0)	8 (66.7)	6 (46.2)
≥65 yr	5 (20.0)	1 (8.3)	4 (30.8)
Sex - n(%)			
Male	16 (64.0)	5 (41.7)	11 (84.6)
Female	9 (36.0)	7 (58.3)	2 (15.4)
Smoking history - n(%)	7(28.0)	4 (33.3)	3 (23.1)
Family Cluster History - n(%)	18 (72.0)	9 (75)	9 (69.2)
Symptoms - n(%)			
Fever	25(100)	12(100)	13(100)
Median highest temperature - °C	38.8 (1.3)	38.6 (1.1)	39.0 (1.5)
37.5-38.0 °C	8 (32.0)	4 (33.3)	4 (30.8)
38.1-39.0 °C	8 (32.0)	5 (41.7)	3 (23.1)
>39.0 °C	9 (36.0)	3 (25.0)	6 (46.1)
Cough	21 (84.0)	11 (91.7)	10 (76.9)
Sputum production	11 (44.0)	5 (41.7)	6 (46.2)
Dyspnea	25 (100.0)	12 (100)	13 (100)
Fatigue	15 (60.0)	7 (58.3)	8 (61.5)
Diarrhea	1 (4.0)	0 (0)	1 (7.7)
Poor Appetite	7 (28.0)	4 (33.3)	3 (23.1)
Myalgia	4 (16.0)	2 (16.7)	2 (15.4)
Headache	5 (20.0)	4 (33.3)	1 (7.7)
Any Comorbidity - n(%)			
Any	9 (36)	4 (33.3)	5 (38.5)
Hypertension (HTN)	6 (24)	3 (25)	3 (23.1)
Diabetes	1 (4.0)	0 (0)	1 (7.7)
Gout	1 (4.0)	0 (0)	1 (7.7)
Chronic Hepatitis B (CHB)	1 (4.0)	0 (0)	1 (7.7)
Gastrointestinal stromal tumor (GIST)	1 (4.0)	0 (0)	1 (7.7)
Arrhythmia	2 (8.0)	1 (8.3)	1 (7.7)
Meniere	1 (4.0)	1 (8.3)	0 (0)

Table 2. Laboratory Data, Baseline characteristics at Ward (ICU) and Treatment

	All Patients (N=25)	Disease Severity	
		Severe (n=12)	Critical (n=13)
Arterial blood gas analysis* - n/total n			
pH <7.35 and >7.45	14/20	4/8	10/12
PaCO2>45mmHg	13/20	4/8	9/12
Lactate > 2mmol/L	10/20	3/8	7/12
PaO2/FiO2< 300mmHg	17/20	6/8	11/12
Blood routine- no.(%)			
White-cell count>10,000/mm ³	3(12)	0(0)	3(23)
Lymphocyte count<1,500/mm ³	17(68)	5(42)	12(92)
Platelet count <150,000/mm ³	4(16)	1(8)	3(23)
Blood biochemical analysis- no.(%)			
Alanine aminotransferase >40 U/L	11(44)	4(33)	7(54)
Aspartate aminotransferase >40 U/L	8(32)	4(33)	4(31)
Serum total bilirubin >17.1umol/L	5(20)	3(25)	2(15)
Serum creatinine >110umol/L	1(4)	0(0)	1(8)
Serum lactate dehydrogenase >250U/L	8(32)	5(42)	3(23)
Others[#] - n/total n			
C-reactive protein≥10mg/L- no.(%)	17(68)	6(50)	11(85)
Procalcitonin≥0.5ng/ml	2/22	0/10	2/12
CD4+ T cells count<400/uL ^{\$}	11/24	2/11	9/13
CD8+ T cells count <220/uL ^{\$}	13/24	2/11	11/13
D-Dimer>0.5mg/L [#]	16/22	6/11	10/11
Prothrombin activity<75% [#]	6/22	1/11	5/11
Apache II scoreon before PP≥15 ^{&}	14/20	3/8	11/12
SOFA scoreon before PP≥2 ^{&}	17/20	6/8	11/12
Treatment			
Antiviral- no.(%)	19(100)	12(100)	13(100)
Antibiotics- no.(%)	14(56)	4(33)	10(77)
Corticosteroids- no.(%)	12(48)	2(17)	10(77)
Intravenous immunoglobulin- no.(%)	19(76)	7(58)	12(92)
Anticoagulation- no.(%)	7(28)	3(25)	4(31)
Oxygen therapy - no.(%)			
Nasal prongs	10(40)	10(83.3)	0(0)
Face mask	6(24)	1(8.3)	5(38.5)
High-flow nasal cannula (HFNC)	6(24)	1(8.3)	5(38.5)
Mechanical ventilation - no.(%)			
Noninvasive	3(12.0)	0(0.0)	3(23.1)
Positioning- no.(%)			
PP	15(60)	7(58.3)	8(61.5)
LP	4(16)	1(8.3)	3(23.0)
PP+ LP	6(24)	4(33.3)	2(15.3)
Mean Daily PP session hours ^{\$}	4.9(3.1)	3.6(1.6)	6.4(3.7)
Mean Baseline RR ^{\$\$}	28.4(3.5)	26.6(2.1)	30.0(3.8)
Mean Post RR ^{\$\$}	21.3(1.3)	20.5(1.2)	22.1(1.0)
Mean Baseline CT-score ^{\$\$}	41.8(19.2)	26.7(11.6)	55.8(13.2)
Mean Post CT-score ^{\$\$}	29.3(16.8)	16.4(7.7)	41.2(13.7)

*Data were available for 20 patients

#Data were available for 22 patients

\$Data were available for 24 patients

&Data were available for 20 patients

§ 21 patients used PP (only PP session hours are included)

\$\$ Both differences of RR and CT score were statistically significant ($p < 0.001$).

Table 3. Treatment and outcomes of the studies patients

Case No.	Sex	Age	Comorbidities	Severity	Apache II /SOFA	Treatment	Daily PP and/or LP Session (hrs)	Baseline PaO ₂ /FiO ₂	Post PaO ₂ /FiO ₂ (days*)	Baseline RR	Post RR (days*)	Baseline CTscore	Post CT score (days*)	Adverse events Post PP/LP	Outcome
1	Male	43	HTN,CHB	Critical	15/2	HFNC+PP	8	222	295(5)	30	22(6)	65	47(7)	Scrotal pain	Survive
2	Male	79		Critical	23/3	HFNC+LP	4	198	348(17)	29	23(1)	56	52(10)	Dyspnea, Sternal pain	Survive
3	Male	60	CC	Critical	18/1	HFNC+PP	6	330	443(4)	28	20(6)	25	17(6)	Sternal pain	Survive
4	Female	62		Critical	15/4	HFNC+PP+ LP	2+4	166	209(6)	30	23(2)	66	47(7)		Survive
5	Male	59	HTN	Critical	25/3	HFNC+PP	10	123	363(7)	27	22(5)	46	36(8)	Skin itchiness	Survive
6	Female	79		Critical	18/3	NIV+PP+ LP	2+4	128	184(4)	31	21(7)	53	22(13)	Chest tightness	Survive
7	Male	56	Arrhythmia	Critical	24/5	NIV+PP	8	162	392(6)	33	23(6)	55	43(6)		Survive
8	Male	36		Critical	23/3	NIV+PP	14	184	418(3)	40	23(7)	80	45(12)		Survive
9	Male	39		Critical	Missing	Mask+PP	4	Missing	436	33	22(3)	56	49(10)		Survive
10	Male	38		Critical	12/3	Mask+PP	6	178	373(7)	26	22(7)	61	60(8)		Survive
11	Male	78	HTN,DM,Gout	Critical	30/5	Mask+LP	4	162	390(9)	27	22(5)	57	31(13)	Dyspnea, Sternal pain	Survive
12	Male	82		Critical	18/4	Mask+LP	4	181	Missing	26	21(4)	42	27(12)	Dyspnea, Sternal pain	Survive
13	Male	62		Critical	18/3	Mask+PP	4	158	388(15)	30	23(4)	63	60(11)	Lumbago	Survive
14	Female	65	HTN,Meniere	Severe	18/3	HFNC+PP+ LP	2+4	190	229(7)	31	22(6)	50	28(11)		Survive
15	Male	63		Severe	Missing	Mask+PP	4	Missing	Missing	26	18(3)	28	19(13)		Survive
16	Male	42		Severe	8/2	NP+PP+ LP	2+4	224	306(7)	28	22(4)	19	13(6)		Survive
17	Male	32		Severe	Missing	NP+PP+ LP	2+4	Missing	Missing	26	22(2)	46	22(10)		Survive
18	Male	29		Severe	Missing	NP+PP+ LP	1+4	Missing	Missing	25	20(5)	23	6(13)		Survive
19	Female	61	HTN	Severe	Missing	NP+PP	6	Missing	Missing	24	20(7)	32	25(12)		Survive
20	Female	56	HTN	Severe	16/2	NP+PP	4	290	Missing	25	19(2)	29	25(8)		Survive
21	Female	41		Severe	7/2	NP+PP	4	215	312(7)	26	21(3)	11	9(7)		Survive
22	Female	27		Severe	12/0	NP+PP	4	415	Missing	27	21(3)	15	6(7)		Survive
23	Female	53		Severe	9/2	NP+PP	4	232	288(9)	26	20(5)	25	15(7)		Survive
24	Female	63		Severe	15/2	NP+PP	6	273	366(2)	25	20(1)	18	10(7)		Survive
25	Female	56	Arrhythmia	Severe	13/0	NP+ LP	4	420	Missing	30	21(7)	24	19(16)	Dyspnea, Sternal pain	Survive

Abbreviations: HTN, hypertension; DM, diabetes; COPD, chronic obstructive pulmonary disease; CHB, chronic hepatitis B; GIST, gastrointestinal stromal tumor; HFNC, high-flow nasal cannula oxygen therapy; NIV, non-invasive ventilation; NP, nasal prongs; PP, prone position; LP, lateral position; CT, computed tomography.

*Interval days of PP and/or LP sessions after the baseline.

Figure 2: CT images of lungs from two patients and scores evaluated according to the scoring system

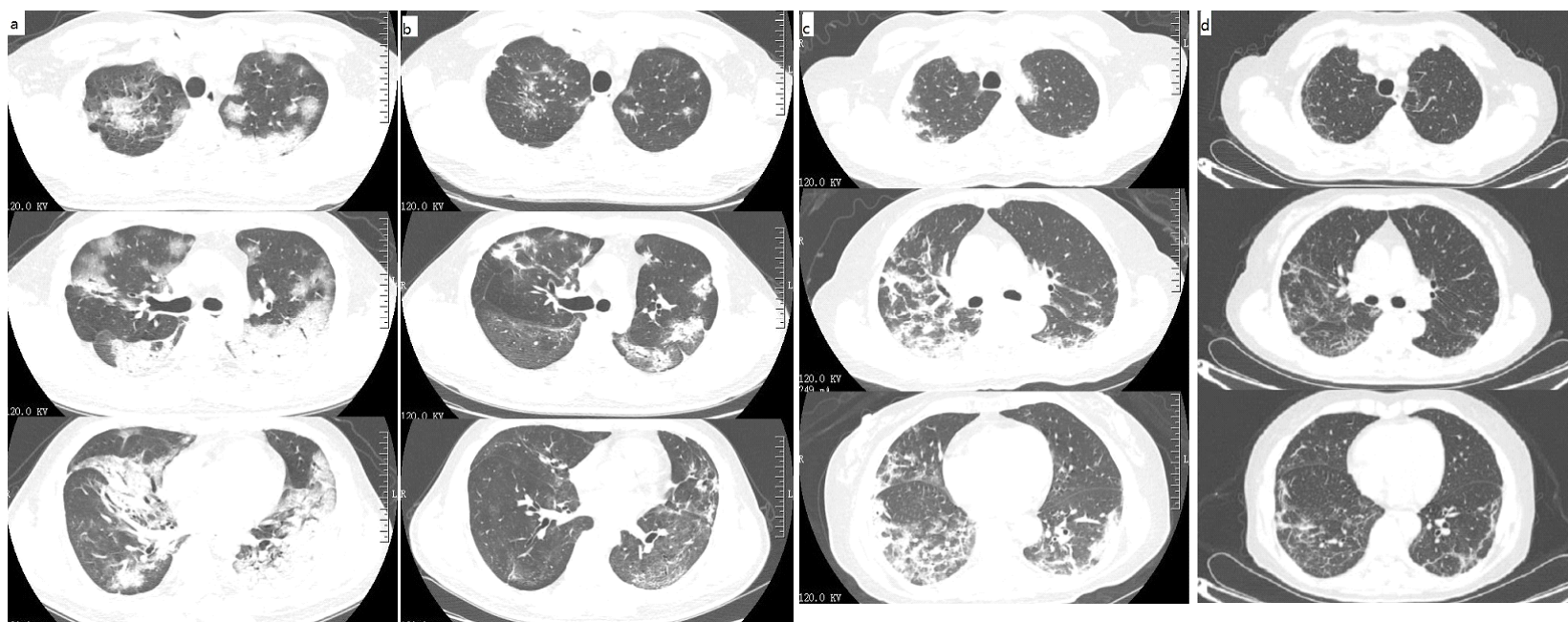


Figure a and b was a critical patient (36-year-old man)

a: CT scans before interventions revealed multiple bilateral nodular ground-glass opacities and large area of consolidation, and the score was 80.

b: Chest CT 12 days after interventions showed the bilateral lesions was obvious absorbed, and the score decreased to 45.

Figure c and d was a severe patient (65-year-old woman)

c: CT scans before treatment revealed multiple bilateral ground-glass opacities and consolidation, and the score was 50.

d: Chest CT 11 days after treatment showed the bilateral lesions was obvious absorbed, and the score dropped to 28.