

1 **A Research on the Results of Viral Nucleic Acid Tests and CT**

2 **Imaging Variation of Patients with COVID-19**

3 Meng Xu^{2*}, Xun Liu^{3*}, Chuhong Su^{4*}, Yuping Zeng⁵, Jinqian Zhang⁶, Xuwen Li²,

4 Guirong Liu⁷, Jinjun Xie⁸, Hongyong Liu⁹, Yusheng Jie¹

5 ¹Department of Infectious Diseases, the Third Affiliated Hospital of Sun Yat-sen University,

6 Guangzhou, P.R. China;

7 ²Department of Hospital Infection Management, the Third Affiliated Hospital of Sun Yat-sen

8 University Yuedong Hospital, Meizhou, P. R. China;

9 ³Clinial data center, the Third Affiliated Hospital of Sun Yat-sen University, Guangzhou, P. R.

10 China;

11 ⁴Department of Nutrition and Food Hygiene, Southern Medical University, Guangzhou, P. R.

12 China;

13 ⁵Department of Intensive Medical, the Third Affiliated Hospital of Sun Yat-sen University

14 Yuedong Hospital, Meizhou, P. R. China;

15 ⁶Department of Cardiovascular Medicine, the Third Affiliated Hospital of Sun Yat-sen University

16 Yuedong Hospital, Meizhou, P. R. China;

17 ⁷Department of Laboratory Medicine, The Third Affiliated Hospital of Sun Yat-sen University

18 Yuedong Hospital, Meizhou, P. R. China;

19 ⁸Department of Radiology, The Third Affiliated Hospital of Sun Yat-sen University Yuedong

20 Hospital, Meizhou, P. R. China;

21 ⁹Department of Renal Medicine, the Third Affiliated Hospital of Sun Yat-sen University Yuedong

22 Hospital, Meizhou, P. R. China;

23 *Equal contribution

24 Correspondence to: Hongyong Liu, email:13823850589@139.com. And Yusheng Jie, M.D, Ph.D,

25 email: jjeyusheng@163.com

26

27

28

29

30

31

32

33

34

35

36

37

38

39

40

41

42

43

44

45 **Abbreviations**

46

47 COVID-19:coronavirus disease 2019

48 WHO: The World Health Organization

49 SARS-CoV-2: severe acute respiratory syndrome coronavirus 2

50 RT-PCR: real-time reverse transcription–polymerase chain reaction

51 CT: computerized tomography

52 GGO: ground-glass opacity

53 ACE2: angiotensin-converting enzyme 2

54

55

56

57

58

59

60

61

62

63

64

65

66

67 **Abstract**

68 **Background:** Coronavirus disease 2019 (COVID-19) has become a global health
69 problem. We aim to investigate the changes in the results of viral nucleic acid tests on
70 pharyngeal swabs and feces of patients with COVID-19 and CT imaging of lungs as
71 the disease progresses.

72 **Methods:** Seven patients with COVID-19 in the third affiliated hospital of Sun
73 Yat-sen University Yuedong Hospital were retrospectively enrolled with clinical
74 features, including imaging staging, and performance characteristics of viral nucleic
75 acid test results of pharyngeal swabs and feces. The dynamic changes of these
76 features were observed during hospitalization, and therapeutic effect and prognosis of
77 patients were evaluated.

78 **Results:** The results of seven cases with COVID-19 were positive for viral nucleic
79 acid tests on pharyngeal swabs early after the onset of symptoms, and then turned
80 negative; while the results of viral nucleic acid tests on feces were persistently
81 positive in the mid-term clinical treatment and recovery period. And the viral nucleic
82 acid test results were capricious in three cases. Pulmonary CT imaging showed
83 characteristic changes in early, advanced and recovery phases.

84 **Conclusion:** The application of viral nucleic acid detection and pulmonary CT
85 imaging can be used for screening of suspected cases. Fecal nucleic acid test should
86 be recommended as the reference of discharge standard, in order to minimize
87 the risk of transmission from digestive tract.

88

89 **Key Words:**

90 COVID-19; Diagnosis; Virus Nucleic Acid; Lung CT

91

92

93

94 **1. Introduction**

95 Beginning in December 2019, a cluster of unidentified respiratory illness was
96 successively discovered in Wuhan, China, and subsequently spread in various
97 provinces of China and over 90 countries worldwide. The World Health Organization
98 (WHO) named this kind of unidentified disease as COVID-19. Recent researches
99 show that severe acute respiratory syndrome coronavirus 2 (SARS-CoV-2), a β -type
100 coronavirus, has more than 85% homology with bat SARS-like coronavirus, acting as
101 the causative organism of COVID-19, and it is easily transmissible in humans. The
102 source of infection is mainly infected patients, and also asymptomatic patients.
103 Respiratory droplets and close contact transmission are definite transmission routes
104 and there is a possibility of aerosol transmission in a relatively closed environment
105 when exposed to high concentrations of aerosol for a long time. Primary
106 manifestations of COVID-19 include fever, dry cough, limb weakness and dyspnea[1].
107 The latest research found that COVID-19 cases may also show gastrointestinal
108 symptoms, but the incidence is low[2]. Similarly, clinical manifestation of cases in
109 our hospital also include gastrointestinal symptoms. By March 5, 2020, on the verge
110 of reaching 100000 confirmed cases of COVID-19 had been reported in China and
111 other countries around the world [3], and 1524 patients had died, equivalent to a
112 mortality rate of about 2%[4].

113 In addition to the corresponding epidemiological history and clinical
114 manifestations, confirmed cases of COVID-19 need to have etiological evidence,
115 which means positive real-time reverse-transcription–polymerase-chain-reaction
116 (RT-PCR) results for the detection of SARS-CoV-2 nucleic acids or highly
117 homologous viral gene sequencing to known SARS-CoV-2[5]. Compared with viral
118 gene sequencing, viral nucleic acid detection is more cost-effective, efficient, and
119 faster, making it the main method for pathogenic diagnosis. Due to the lack of nucleic
120 acid detection kit and its long detection time span characteristics, viral nucleic acid
121 detection for large number of patients in the early stages of outbreak becomes difficult.

122 Some clinicians proposed that the pulmonary computerized tomography (CT) scan of
123 the lungs should be included in the diagnostic criteria, and even discussed whether it
124 can be used as a diagnostic basis for confirmed cases[6].

125 However, the insistency of viral nucleic acid tests and CT scan results triggered
126 controversy. This article analyzes the epidemic history, nucleic acid testing results,
127 and CT images of 7 confirmed cases admitted to our hospital, and discusses the
128 changes in nucleic acid tests and CT images as the disease proceeds, in order to
129 provide scientific basis for screening, early diagnosis and dynamic assessment of the
130 disease.

131

132 **2. Methods**

133 **2.1 Study design and participants**

134 This was a retrospective analysis study of the clinical features of 7 patients with
135 COVID-19 who were confirmed COVID-19 pneumonia in the third affiliated hospital
136 of Sun Yat-sen university Yuedong hospital, from January 2020 to February 2020.
137 Covid-19 patients were diagnosed and defined the degree of severity on the basis of
138 the Diagnosis and Treatment of COVID-19 pneumonia (Trial Edition 7). This study
139 was approved by the Ethics Committee of the third affiliated hospital of Sun Yat-sen
140 university Yuedong hospital [2020-01]. Written informed consent was waived owing
141 to the rapid emergence of this infectious disease.

142 **2.2 Virus nucleic acid detection**

143 Virus nucleic acid detection was performed by RT-PCR (BIOER, China and Shanghai
144 ZJ Bio-Tech, China). The samples were pharyngeal swabs and fecal specimens of
145 patients, detecting the RNA-dependent RNA polymerase, nucleocapsid protein (N)
146 gene and envelope protein (E) gene of SARS-CoV-2. The test results were classified

147 as negative and positive.

148 **2.3 CT scan**

149 All CT images were obtained with patients in the supine position and scanned from
150 the level of the upper thoracic inlet to the inferior level of the intercostal angle using a
151 Brilliance 16-slice CT (Philips, The Netherlands). The imaging results were
152 interpreted and reviewed by 2 attending or higher-level radiologists.

153

154 **3. Results**

155 **3.1 Epidemiology**

156 The patients were 7 newly confirmed cases of COVID-19 pneumonia by the
157 pharyngeal swab nucleic acid test from January 25 to February 6, 2020 in the Third
158 Affiliated Hospital of Sun Yat-sen University Yuedong Hospital, and 5 were
159 discharged from hospital on February 23, 2020, and the other 2 cases are still
160 hospitalized. All cases were named as case plus number for convenience, such as case
161 1. Among them, Cases 1, 3, 4, 5 and 7 are returnees from Wuhan city, Hubei Province.
162 Cases 2 and 6 are close contacts of confirmed cases. Case 2 is a colleague of a
163 confirmed patient from other hospital, and Case 6 is the mother of Case 4. The
164 demographics of patients is shown in Table 1.

165 **3.2 Clinical Manifestation**

166 All patients had respiratory symptoms, mainly cough and pharynx discomfort,
167 throughout the course of the disease, accompanied by fever in 3 patients and limb
168 weakness in 6 patients. Abdominal pain, diarrhea and other gastrointestinal symptoms
169 were also observed in 3 patients. The clinical symptoms of all cases are shown in
170 Table 2.

171 **3.3 The results of virus nucleic acid detection**

172 Virus nucleic acid test results are shown in Table 3. All cases were viral nucleic

173 acid-positive in pharyngeal swabs after admission, and subsequently turned negative.
174 However, Cases 1, 2 and 6 were positive again for viral nucleic acid tests on Day 12,
175 9 and 12 after the onset of symptoms, respectively, of which Case 6 was positive
176 again after being negative for 3 consecutive times. Moreover, Case 5 remained
177 positive for the pharyngeal swab virus nucleic acid test during the first 20 days after
178 the onset of symptoms. Besides, we got positive results in faeces of 4 patients (Cases
179 1, 3, 4 and 6) while no positive results were detected in faeces of the other 3 patients
180 (Cases 2, 5 and 7). The viral nucleic acid test by faeces of Case 6 was positive again
181 after 4 consecutive negatives. Case 4 remained positive for faeces virus nucleic acid
182 test during the first 22 days after the onset of symptoms.

183 **3.4 The results of CT examination**

184 Lung CT images revealed the evidence of pneumonia in all 7 cases (Table 4 and
185 Figure 1). Except for Case 7, whose lower lobe of right lung was only involved. all
186 patients had bilateral lung involvement. Five cases (Cases 1,2,3,4,6) showed
187 peripheral distribution, while the other 2 cases showed diffused pulmonary
188 abnormality. The majority of patients had characteristic ground-glass opacity (GGO)
189 in CT images of the lungs and a few patients showed thickened blood vessel (case 6)
190 and interstitial tissue (case 5). No pulmonary consolidation or cystic changes was
191 observed.

192 On the 7th day, a chest CT examination of Case 1 was conducted in our hospital, which
193 showed obvious lung marking changes, and multiple patchy shadows under the pleura
194 in the lower lobe of the lungs (Figure 1-1a). The result got worse on day 10 (Figure
195 1-1b) until it became better again on day 20 (Figure 1-1c). CT image showed that Case
196 2 had multiple patchy shadows with increased density and fuzzy margin scattered in
197 the left lung on day 4, which were mainly distributed in superior lobe of left
198 lung (Figure 1-2a to 2c), and later slowly disappeared. CT images of Case 3 and Case
199 4 (Figure 1-3a to 4c) were similar, which started with multiple patchy slightly
200 high-density shadows, and later absorbed on day 14 and day 6, respectively. In
201 addition, we found that Case 5 (Figure 1-5a to 5c) demonstrated fluctuating lung CT

202 images, which showed earlier alleviated and later aggravated manifestation. Case 6
203 (Figure 1-6a to 6c) showed GGO with fuzzy margin in the lower lobe of both lungs,
204 with focus of infection near the pleura and thicken blood vessels nearby. Case 7
205 (Figure 1-7a to 7c) showed a slight increase in the markings of both lungs, and GGO
206 were seen in the outer basal and posterior basal segments of the lower lobe of right
207 lung.

208

209 **4. Discussion**

210 The current pathogenic detection methods of COVID-19 mainly include fluorescent
211 RT-PCR detection of virus nucleic acid or virus gene sequencing. The specimens that
212 can be collected include pharyngeal secretions, sputum, bronchial veolar lavage fluid,
213 blood, faeces, urine, etc. Test methods, specimens, test reagents, and test operations
214 are all factors that may affect the results. Our hospital uses fluorescent RT-PCR to
215 detect virus nucleic acid. The specimens are mainly pharyngeal swab and faeces. For
216 the seven confirmed cases in our hospital, virus nucleic acid test results mainly
217 showed that the pharyngeal swab virus nucleic acid test results were positive in early
218 stage after the onset of symptoms, and then turned negative , while the faeces test
219 results were persistently positive in the middle of clinical treatment and recovery
220 stage. Among them, the pharyngeal swab test result of case 6 returned positive again
221 after being negative for 3 consecutive times, and faeces specimens test result returned
222 to positive for being negative for 4 consecutive times, which indicates that the test
223 result may be related to the amount of virus in the body, the sensitivity of the test kit,
224 and the repeated illness of COVID-19. This situation was consistent with what was
225 reported in the press conference of the government in Guangdong Province where
226 14% of discharged patients were "Recurrence". The faeces test results of Case 4 and
227 the pharyngeal swab test results of Case 5 remained positive for virus nucleic acid test
228 even on day 20. Studies have found that there is a strong binding affinity between the
229 S protein of SARS-CoV-2 and the human angiotensin receptor 2 (ACE2)[7]. ACE2 is

230 also highly expressed in the absorptive epithelial cells of the colon and ileum,
231 indicating that the digestive system is a potential route of infection[8],and the
232 possibility of gastrointestinal transmission in case 4 is not ruled out. Moreover,
233 Chinese scientists have isolated the virus from the feces, the damaged mucous
234 membranes and bleeding of the gastrointestinal tract, suggesting that more attention
235 should be paid to preventing fecal-oral transmission[2].

236 The visual findings from COVID-19 cadaver studies are consistent with the
237 distribution of imaging changes, considering that the GGO images seen in imaging
238 are corresponding to the lung lesions seen in visual findings[9]. CT scan has the
239 advantage of high image resolution, and the early lung CT manifestations of
240 COVID-19 have certain characteristics, which plays a very important role in early
241 diagnosis and treatment of COVID-19[10]. According to the scope and type of the
242 lesion, the lung CT manifestation is divided as early, advanced, severe and critical,
243 and recovery stages[11]. Confirmed cases in our hospital include image changes in the
244 early, advanced and recovery phases. Until the end of February 23, CT changes were
245 seen in both lungs of 6 cases among the 7 confirmed cases, the basal segment of the
246 lower lung lobe in 5 cases was involved, 5 cases showed GGO, and 1 case had
247 thickened blood vessels and thickened interstitial tissue. No pulmonary consolidation
248 occurred in these 7 cases.

249 Combined results of nucleic acid test and CT imaging among the 7 confirmed patients
250 indicate that the 2 detection methods are comparable. Both detections were positive in
251 6 cases. Nucleic acid tests were negative and CT changes were positive in 1 case, and
252 nucleic acids were positive after re-examination. No case with both negative by the 2
253 methods was observed, and the case with positive nucleic acids and negative CT
254 changes was not found. In general, the positive results of the pharyngeal swab tests
255 came earlier than the CT image indicating pneumonia alleviation. Studies have found
256 that CT imaging changes in the lungs are more sensitive to the detection of
257 COVID-19 than pharyngeal swab viral nucleic acid tests[12].

258 Through comparison, it was found that virus nucleic acid test and CT examination

259 each have their own sensitivity. Based on the gold standard for viral pathogen
260 detection, CT imaging changes in the lungs are carried out to a certain extent in the
261 prevention and control of suspected patients and the monitoring of disease progress.
262 As one of the designated hospitals in Guangdong Province and one of the key
263 hospitals for fever diagnosis, our hospital performs viral nucleic acid detection and
264 lung CT at the same time during the prevention and control of the coronavirus
265 outbreak. In the early phase, faeces viral nucleic acid tests were also conducted
266 besides pharyngeal swab tests for viral nucleic acid detection, actively investigating
267 suspicious patients in our hospital from various aspects to reduce the risk of
268 nosocomial infections.

269

270 **5. Conclusion**

271 In the diagnosis of COVID-19, viral nucleic acid test is used as the pathogenic
272 evidence. With unknown nucleic acid test result and obvious symptoms and signs, the
273 lung CT examination can be used as assistance to diagnosis so as to reduce missed
274 diagnosis and misdiagnosis. In confirmed patients, CT changes in the lungs can assist
275 in disease assessment. For patient discharge, fecal nucleic acid test can be used to
276 prevent the patients with negative throat swab viral nucleic acid and positive fecal
277 nucleic acid from recrudescence or becoming potential infectious sources.

278

279 **Funding**

280 No fund.

281 **Conflict of interest**

282 The authors declare no conflict of interest in the manuscript.

283 **Availability of data and materials**

284 The datasets used and/or analyzed during the current study are available from the

285 corresponding author on reasonable request.

286 **Ethical approval**

287 This study was approved by the Ethics Committee of the third affiliated hospital of
288 Sun Yat-sen university Yuedong hospital [2020-01]. Written informed consent was
289 waived owing to the rapid emergence of this infectious disease.

290

291

292 **References**

293 [1]National Health Commission of the People's Republic of China. Diagnosis and
294 Treatment of COVID-19pneumonia (Trial Seven Edition, 03 March 2020)
295 <http://www.nhc.gov.cn/>.

296 [2]Guan WJ, Ni ZY, Hu Y, et al. Clinical Characteristics of Coronavirus Disease 2019
297 in China. N Engl J Med. 2020. [Accessed 11 April 2020]
298 DOI:10.1056/NEJMoa2002032.

299 [3] WHO. Director-General's opening remarks at the media briefing on
300 COVID-19-6-march-2020.<https://www.who.int/dg/speeches/detail/>.

301 [4] Shi H, Han X, Jiang N, et al. Radiological findings from 81 patients with
302 COVID-19 pneumonia in Wuhan, China: a descriptive study. Lancet Infect Dis.
303 2020; 20(4):425-434.

304 [5] General Office of National Health Committee. Office of State Administration of
305 Traditional Chinese Medicine. Notice on the issuance of a program for the
306 diagnosis and treatment of novel coronavirus (2019-nCoV) infected pneumonia
307 (trial sixth edition, 19 February2020)

- 308 [6] Chinese Society of Radiology. Radiological diagnosis of new coronavirus infected
309 pneumonitis: Expert recommendation from the Chinese Society of Radiology
310 (First edition). Chin J Radial, 2020,54(00): E001-E001.DOI:
311 10.3760/cma.j.issn.1005-1201.2020.0001.
- 312 [7] XU X, CHEN P, WANG J, et al. Evolution of the novel coronavirus from the
313 ongoing Wuhan outbreak and modeling of its spike protein for risk of human
314 transmission. J. SCIENCE CHINA-LIFE SCIENCES,2020;63(3):457-460.
- 315 [8] ZHANG H, KANG Z, GONG H, et al. The digestive system is a potential route of
316 2019-nCoV infection: A bioinformatics analysis based on single-cell
317 transcriptomes. J. Biorxiv, 2020. [Accessed 31 January 2020]
318 <https://doi.org/10.1101/2020.01.30.927806>
- 319 [9] Liu Q, Wang RX, Qu GQ, et al. A report on the systematic autopsy of a novel
320 coronavirus pneumonia. Journal of Forensic Medicine. 2020;36(1):21-23. (in
321 Chinese)
- 322 [10] Wang K, Kang SR, Tian RH, et al. Analysis of chest CT imaging features of
323 novel coronavirus pneumonia. J. Chinese Journal of Clinical Medicine.
324 2020;27(01):27-31. (in Chinese)
- 325 [11] Chinese Society of Radiology. Radiological diagnosis of new coronavirus
326 infected pneumonitis: Expert recommendation from the Chinese Society of
327 Radiology (First edition). Chin J Radiol, 2020,54(00): E001-E001. DOI:
328 10.3760/cma.j.issn.1005-1201.2020.0001
- 329 [12] Jin YH, Chen B, Zhang YF, et al. The value of CT imaging of lung in the

330 prevention and control of new coronavirus pneumonia. J. Modern Practical

331 Medicine.2020;32(02):141-144. (in Chinese)

332

Table 1. Demographics of confirmed cases of COVID-19

Basic characteristics	N (%)
Age	
0 ~	0 (0)
20 ~	3 (42.9%)
40 ~	3 (42.9%)
60 ~	1 (14.2%)
≥80	0 (0)
Sex	
Male	3 (42.9%)
Female	4 (57.1%)
Habitual residence	
Hubei Province	5 (71.4%)
Guangdong Province	2 (28.6%)
Contact with people from Wuhan	
Positive	4 (42.9%)
Negative	3 (57.1%)

333

334

335

336

337

338

339

340

341

342

343

344

345

Table 2. Clinical features of patients with COVID-19

Clinical features	N (%)
Type of case	
Mild	0 (0)
Common	6 (85.7%)
Severe	1 (14.3%)
Critical	0 (0)
Fever	
Positive	3 (42.9%)
Negative	4 (57.1%)
Nasal Obstruction	
Positive	4 (57.1%)
Negative	3 (42.9%)
Catarrh	
Positive	1 (14.3%)

Negative	6 (85.7%)
Rhinobyon	
Positive	2 (28.6%)
Negative	5 (71.4%)
Productive Cough	
Positive	2 (28.6%)
Negative	5 (71.4%)
Dry Cough	
Positive	5 (71.4%)
Negative	2 (28.6%)
Chest distress	
Positive	3 (42.9%)
Negative	4 (57.1%)
Polypnea	
Positive	2 (28.6%)
Negative	5 (71.4%)
Limb weakness	
Positive	6 (85.7%)
Negative	1 (14.3%)
Diarrhea	
Positive	3 (42.9%)
Negative	4 (57.1%)
Stomachache	
Positive	2 (28.6%)
Negative	5 (71.4%)

347

Table 3. Viral nucleic acid test results of COVID-19 cases

Case number	Sample type	Day																						
		1	2	3	4	5	6	7	8	9	10	11	12	13	14	15	16	17	18	19	20	21	22	23
1	Throat swab							+	-				+	-	-	-								-
	Faeces															+	+	-		-				-
2	Throat swab				+		-			+	-							-	-					
	Faeces											-	-					-	-					
3	Throat swab								+	-			-			-		-				-		-
	Faeces									-			-			+		-						-
4	Throat swab	+	-			-	-	-		-	-	-		-		-		-			-	-		
	Faeces		+			+	+	+		+	+	+		+		+		+		+	+		+	+
5	Throat swab				+	+	+		+		+		+		+		+		+		+	-	-	-
	Faeces					-	-		-		-		-		-		-				-			-
6	Throat swab		+	+	-		-		-				+		-		-		-		-			
	Faeces			+	-		-		-						-				+		-		-	
7	Throat swab		+	+	-		-	-																
	Faeces			-		-	-																	

Results "+" presents positive result, "-" presents negative result; "Day" counts when symptoms appear.

348

349

350

351

352

353

354

355

356

Table 4. Imaging changes of CT examination of COVID-19 cases

Case Number	Location of Lesions	Type of Lesions			
		GGO	Consolidation	Blood Vessel Thickening	Interstitial Tissue Thickening
1	Lower lobes of both lungs	-	-	-	-
2	Upper lobe of left lung; Lower lobes of both lungs	+	-	-	-
3	Lower lobe of both lungs	+	-	-	-
4	Upper lobe of right lung; Lower lobes of both lungs	-	-	-	-
5	Upper lobe of left lung; Lower lobes of right lungs	+	-	-	+
6	Lower lobe of both lungs	+	-	+	-
7	Lower lobe of right lungs	+	-	-	-

357

358

359

360

361

362

363

364

365

366

367

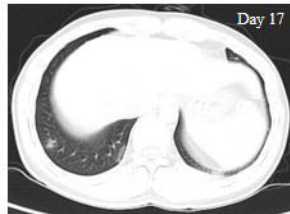
368

369 **Figure 1. Pulmonary CT images of confirmed cases of COVID-19.** The pulmonary
370 CT scan was conducted from the upper level of thoracic inlet to the inferior level of
371 the costophrenic angle with all 7 confirmed patients in the supine position.
372 Representative pictures were presented out of all pictures from every pulmonary
373 cross-section in each patient.

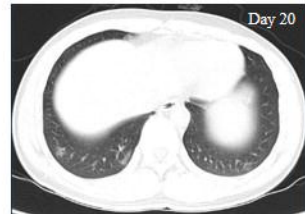
Case 1



1a



1b



1c

Case 2



2a



2b

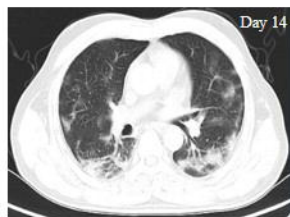


2c

Case 3



3a



3b



3c

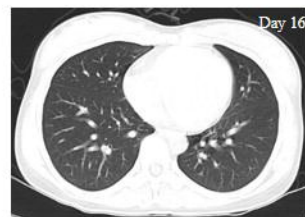
Case 4



4a

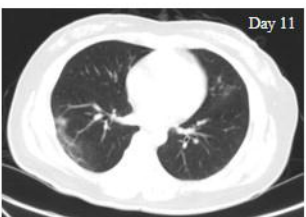


4b



4c

Case 5



5a



5b

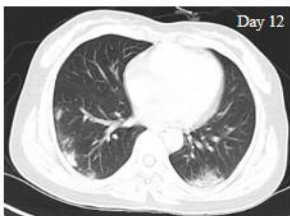


5c

Case 6



6a



6b



6c

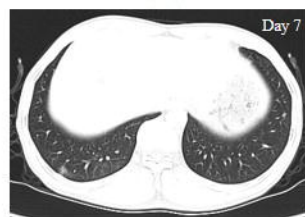
Case 7



7a



7b



7c