

COVID-19: An Update on the Epidemiological, Genomic Origin, Phylogenetic study, India centric to Worldwide current status

Dr. Murugan Nandagopal¹ & Ms. R. Sagaya Jansi,²

1. R&D, LifeCell International Pvt Ltd., 26, Vandalur Kelambakkam Main Road,
Keelakottaiyur, Chennai 600048, India.

2. Assistant Professor, Dept of Bioinformatics, Stella Maris College, Chennai, Tamil Nadu,
India.

Corresponding Author:

Dr Murugan. N M.Sc.,M.Phil., Ph.D., Scientist & Manager, Molecular Genetics, Lifecell
International Pvt Ltd, chennai, India. Email: murugan2science@gmail.com;
murugan.n@fetomed.in

Keywords: Coronavirus; Novel Coronavirus-2; SARS-CoV-2; COVID-19; Pandemic; Genomics;
Phylogeny; WHO

Abstract

The pandemic spread of novel coronavirus, (SARS-CoV-2) causing CoronaVirus Infectious Diseases (COVID-19) emerged into a global threat for human life causing serious death rates and economic crunch all over the globe. As on April 17, 2020 at 2:00am CEST, there include a total of 2,034,802 confirmed cases for Corona and 1,35,163 deaths worldwide have been reported which includes 212 countries, areas or territories reported by World Health Organization (WHO), in which USA tops 6,32,781 confirmed cases (28,221 deaths) followed by Italy 1,65,155 (21,647 deaths), Spain 1,77,633 (18,579 deaths) and China 84,149 (4,642 deaths). This study aims to compare the genomic nature of SARS-CoV-2 genome reported from Wuhan, China with two Indian isolate genome reported by ICMR-NIV, India. Further Phylogenetic studies performed with coronavirus infecting non-human species like Bats, Duck, and sparrow were compared with Indian and other country whole genome sequences of SARS-CoV2 using MegaX and traced out the association between the human coronavirus with the other species viral genome. In addition, epidemiological reports on COVID-19 among Worldwide and India centric data were compared between April 7, 2020 to April 17, 2020 global data and the number of active cases were increased dramatically in this 10 days period studied, highlighted in the current study.

Introduction

Totally 211 countries, territories or area have been affected by the novel pathogenic Human CoronaVirus (HCoV). The novel coronavirus was officially renamed as “SARS-CoV-2” from “2019-nCoV” by 11th February 2020. The disease caused by SARS-CoV-2 was called “CoronaVirus Infectious Disease 2019” (COVID-19) by WHO. COVID-19 has been declared as a Public Health Emergency of International Concern by the WHO [1]. The virus belongs to Coronaviridae family which consists of single-stranded, non-segmented positive-sense RNA genome of size approximately 26-32 kb [2-3]. To date, six known HCoVs have been identified, namely HCoV-229E, HCoV-NL63, HCoV-OC43, HCoV-HKU1, Severe Acute Respiratory Syndrome Coronavirus (SARS-CoV) and Middle East respiratory syndrome coronavirus (MERS-CoV); except SARS and MERS, other four were universally dispersed in the human population and causes common cold infections among one-third of human populations [4-5].

Two serious coronavirus disease outbreaks occurred in the past two decades. First is SARS in 2003, originated from Southern China and spread to more than 30 countries and all major continents, resulted in more than 8000 human infections and 774 deaths [6-7]. The second include MERS in 2012 genetically different from SARS-CoV but infected 2,249 people in 27 countries with 35% case fatality [8-10].

The current COVID-19 entirely made the globe into lockdown status with the highest death rates and infected rates changing dynamically every day. The beginning of SARS-CoV-2 was linked to a cluster of patients with pneumonia of unknown aetiology connected to a local Huanan South China Seafood Market in Wuhan, Hubei Province, China in December 2019 [11]. It is now emerged as pandemic condition and World Health Organization (WHO) report as on April 17, 2020 at 2:00am CEST, there include a total of 2,034,802 confirmed cases for Corona and 1,35,163 deaths worldwide which includes 212 countries, areas or territories with cases [1] WHO region wise data in Fig.1A-B.

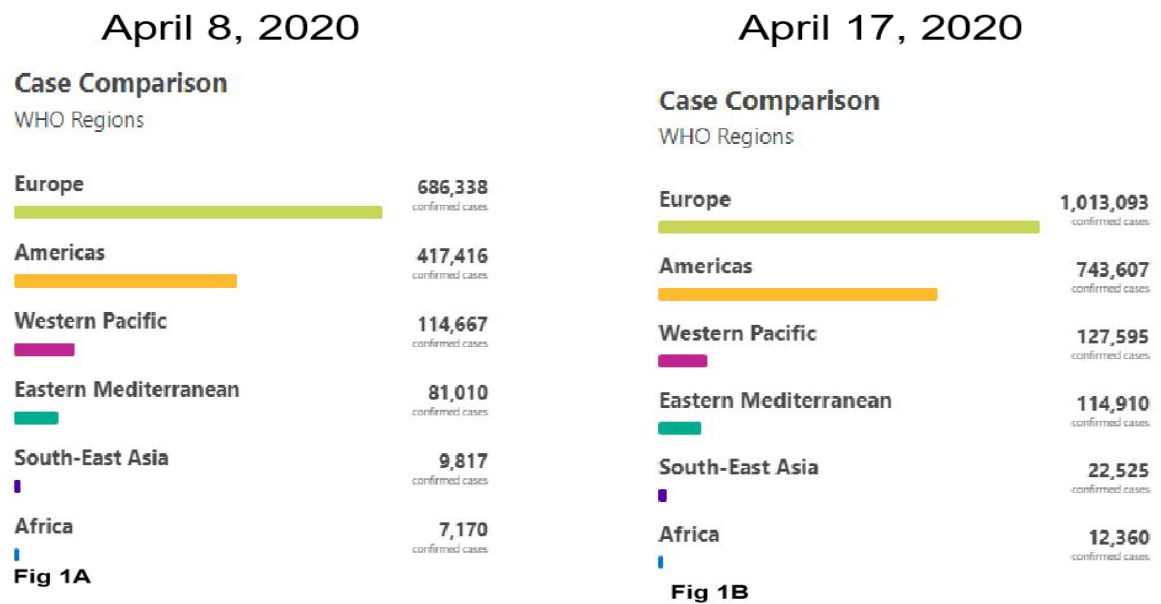


Fig. 1A-B. Region wise Confirmed cases as per WHO report as on (A) April 8, 2020 at 2:00am CET and (B) April 17, 2020 at 2:00 am CEST[1]

The fuss about the source of the virus and its intermediate host is still not yet confirmed. However, so far, there are still controversies about the source of the virus and its intermediate host [3]. The evolutionary analysis shows that the present strain of coronavirus is more similar to Bat coronavirus isolate RaTG13 (GenBank No.: MN996532.1), with 96.2% nucleotide homology in the whole genome [12-14]. Other groups suggest that pangolin, mink, snake, turtle may be potential intermediate hosts for the virus but not conclusively [3, 15- 18].

In India, from January 25 to 31, 2020 three cases were shown to be positive for COVID-19 at Kerala state, all the three had travel history from Wuhan, China. Two patient's samples were analysed by Next Generation sequencing and the data has been published in NCBI under MT012098.1 and MT050493.1 and GISAID database, accession numbers EPI_ISL_413522 and EPI_ISL_413523 and they reported briefly on various aspects [19]. We initiated our analysis, once the genome sequence was available at the NCBI database, however, Pragma D et al., reported by the end of March 2020. This study was aimed to understand the genomics and epidemiology of the Indian Human coronavirus with other major countries genome sequence, in addition the phylogeny relationship between COVID-19 from Indian

patients genome with other Coronavirus genome which infects other species like Bats, Duck, Sparrow and etc.,

Materials and Methods

Sequence recovery and analysis

Genomic sequences hold innumerable information to foresee identification, location and pathogenicity of viral strains. As on April 07, 2020 there stay 547 nucleotide sequences and 5,364 protein sequences available in NCBI Virus database (<https://www.nih.gov/coronavirus>). Of which 469 sequences contains nearly about ~28000-29000 base pairs (bps), sequences represents complete genome data and 78 denotes short specific protein encoding gene sequences.

The phylogeny was constructed to compare the evolutionary relationship of human and bat genome sequences. We used the first complete genome sequence submitted by China under the Genbank id: NC_045512.2 for Severe acute respiratory syndrome coronavirus 2 (SARS-CoV-2) [COVID-19] for the study and a BLAST similarity search was performed. The top 100 hits were screened and the aligned sequences were selected for further studies. Genome sequences of novel COVID-19 affecting Human (30) including 2 genome from India-Kerala state MT050493.1 & MT012098.1 and 2 closely related bat corona viral genomes MG772933.1 and MN996532.1 were investigated using MEGAX. The sequences were subjected to analysis by Maximum Likelihood method and Tamura-Nei model for the native and bootstrap tree (50 repeats) construction.

To compare the genomic evolutionary lineage from the other species, we compared the six (6) sequences of SARS-CoV-2 [Genbank id: NC_045512.2, MT126808.1, MT007544.1, MT049951.1, MT012098.1 (India) and MT050493.1 (India)] and 24 corona virus isolates from other species such as bat, sparrow, duck, pig, cow, etc., using MEGA X [20-22] (Table 1).

Table 1. Genbank accession and details of Corona virus affecting other species genomes used in this study

Accession	Species	Genus	Length	Host	GenBank Title
AY515512	Severe acute respiratory syndrome-related coronavirus	Betacoronavirus	29731	Paguma larvata	SARS coronavirus HC/SZ/61/03
AY572038	Severe acute respiratory syndrome-related coronavirus	Betacoronavirus	29683	civet	SARS coronavirus civet020
EF065511	Pipistrellus bat coronavirus HKU5	Betacoronavirus	30488	Chiroptera	Bat coronavirus HKU5-3
JF705860	Avian coronavirus	Gammacoronavirus	27673	Anatidae	Duck coronavirus isolate DK/CH/HN/ZZ2004
JN874560	Rabbit coronavirus HKU14	Betacoronavirus	31116	Oryctolagus cuniculus	Rabbit coronavirus HKU14 strain HKU14-3
JQ065044	White-eye coronavirus HKU16	Deltacoronavirus	26041	Zosteropidae	White-eye coronavirus HKU16 strain HKU16-6847
KJ473806	Myotis ricketti alphacoronavirus Sax-2011	Alphacoronavirus	27935	Myotis ricketti	BtMr-AlphaCoV/SAX2011
KJ473809	Nyctalus velutinus alphacoronavirus SC-2013	Alphacoronavirus	27783	Nyctalus velutinus	BtNv-AlphaCoV/SC2013
KJ473821	Middle East respiratory syndrome-related coronavirus	Betacoronavirus	30423	Vespertilio sinensis	BTVs-BetaCoV/SC2013
KM454473	Avian coronavirus	Gammacoronavirus	27754	Anatidae	Duck coronavirus isolate DK/GD/27/2014
KX185057	Avian coronavirus	Gammacoronavirus	27802	Gallus gallus	Infectious bronchitis virus strain ck/CH/LHLJ/951
KX432213	Betacoronavirus 1	Betacoronavirus	30868	Canis lupus familiaris	Canine respiratory coronavirus strain BJ232
KX499468	Alphacoronavirus 1	Alphacoronavirus	28614	Sus scrofa	Transmissible gastroenteritis virus strain TGEV AHFF
KY994645	Betacoronavirus 1	Betacoronavirus	30684	Sus scrofa	Porcine hemagglutinating encephalomyelitis virus strain JL/2008
MH810163	Betacoronavirus 1	Betacoronavirus	31032	Bos grunniens	Yak coronavirus strain YAK/HY24/CH/2017
MK211369	Coronavirus BtSk-AlphaCoV/GX2018A	Alphacoronavirus	28303	Scotophilus kuhlii	Coronavirus BtSk-AlphaCoV/GX2018A
MK423876	Avian coronavirus	Gammacoronavirus	27655	Phasianinae	Pheasant coronavirus strain gammaCoV/ph/China/I0710/17
MK720944	Tylonycteris bat coronavirus HKU33	Alphacoronavirus	27636	Tylonycteris robustula	Tylonycteris bat coronavirus HKU33 strain GZ151867
MN611520	Pipistrellus abramus bat coronavirus HKU5-related	Betacoronavirus	30511	Pipistrellus abramus	Pipistrellus abramus bat coronavirus HKU5-related isolate BY140568
NC_016992	Sparrow coronavirus HKU17	Deltacoronavirus	26083	Passeridae	Sparrow coronavirus HKU17
MK907287	Erinaceus hedgehog coronavirus HKU31	Betacoronavirus	29951	Erinaceus amurensis	Erinaceus hedgehog coronavirus HKU31 strain Rs13
KX981440	Porcine epidemic diarrhea virus	Alphacoronavirus	28124	Sus scrofa	Porcine epidemic diarrhea virus isolate CH/HNZZ47/2016
MN611521	Scotophilus kuhlii bat coronavirus 512-related	Alphacoronavirus	27933	Scotophilus kuhlii	Scotophilus kuhlii bat coronavirus 512-related isolate HK140714
MN996532	Bat coronavirus	Betacoronavirus	29855	Rhinolophus affinis	Bat coronavirus RaTG13
NC_045512	Severe acute respiratory syndrome coronavirus 2	Betacoronavirus	29903	Homo sapiens	Wuhan seafood market pneumonia virus isolate Wuhan-Hu-1
MT049951	Severe acute respiratory syndrome coronavirus 2	Betacoronavirus	29903	Homo sapiens	SARS-CoV-2/Yunnan-01/human/2020/CHN
MT126808	Severe acute respiratory syndrome coronavirus 2	Betacoronavirus	29876	Homo sapiens	SARS-CoV-2/SP02/human/2020/BRA
MT050493	Severe acute respiratory syndrome coronavirus 2	Betacoronavirus	29851	Homo sapiens	SARS-CoV-2/166/human/2020/IND
MT012098	Severe acute respiratory syndrome coronavirus 2	Betacoronavirus	29854	Homo sapiens	SARS-CoV-2/29/human/2020/IND
MT007544	Severe acute respiratory syndrome coronavirus 2	Betacoronavirus	29893	Homo sapiens	SARS-CoV2 isolate Australia/VIC01/2020

Results

A phylogenetic tree was constructed with 30 genome sequences of Human coronavirus and 3 sequences of bat coronavirus using maximum likelihood method and Tamura-Nei model with MEGAX program. The algorithm produced a tree with highest log likelihood value (-632944.00) and also formed a bootstrap consensus tree inferred from 50 replicates. The percentage of trees in which the associated taxa clustered together was shown next to the branches. There were a total of 29903 positions in the final dataset. The lengths of the branches represent the amount of change that is estimated to have occurred between a pair of nodes. Alternative evolutionary trees are produced by bootstrapping analysis under maximum likelihood model. This is done through 50 iterations and when we recover the same node after 50 iterations then the node in the tree is well supported.

Upon bootstrap, **Fig. 2.** data showed all the three Bat- SARS-like coronavirus in closed group branching to the China, USA and India strains. Though the first complete genome NC045512.2.1-29903 Wuhan-Hu-1 (blue triangle) was closely branched to MN996528.1 [Wuhan, Hubei, China], MT093571.1 [Sweden], MT039890.1 [Korean travelled from Wuhan, China], MT066156.1 [First case of Italy], MT007544.1 [Australia], the Bat SARS virus, precisely RaTG13 and SL-Covzc45 were completely close and neighborhood with the CoVid-19 isolated from Wuhan- genomes MT198652.2 (Spain), MT123292.2 (Guangzhou, China) MT012098.1 (Kerala, India) and LR757995.1 (Hong Kong, China).

The purpose of this study is to highlight the key role of Wuhan, China trace to Indian patients, Hence, the two India- Kerala state isolates were specifically traced by multiple alignments of the genome sequences using NCBI tool and Multalin, we found MT012098 consist of 29,854 bps and MT050493.1 consist of 29,851bps, three basepairs were missing in the initial sequence of the second isolate. Whereas totally, 9 point mutations were identified in this two genomes of which, 8 were C-T/T-C change and only one mutation at position 22,772 T/G change with 99% identity score, complete details recorded in the Table 2. The second strain from India MT050493.1 was in close association with LR757996.1 (Wuhan, China), MN938384.1 (Guangdong, China) and LC528232.1 (Isolated from a patient in cruise ship, Japan).

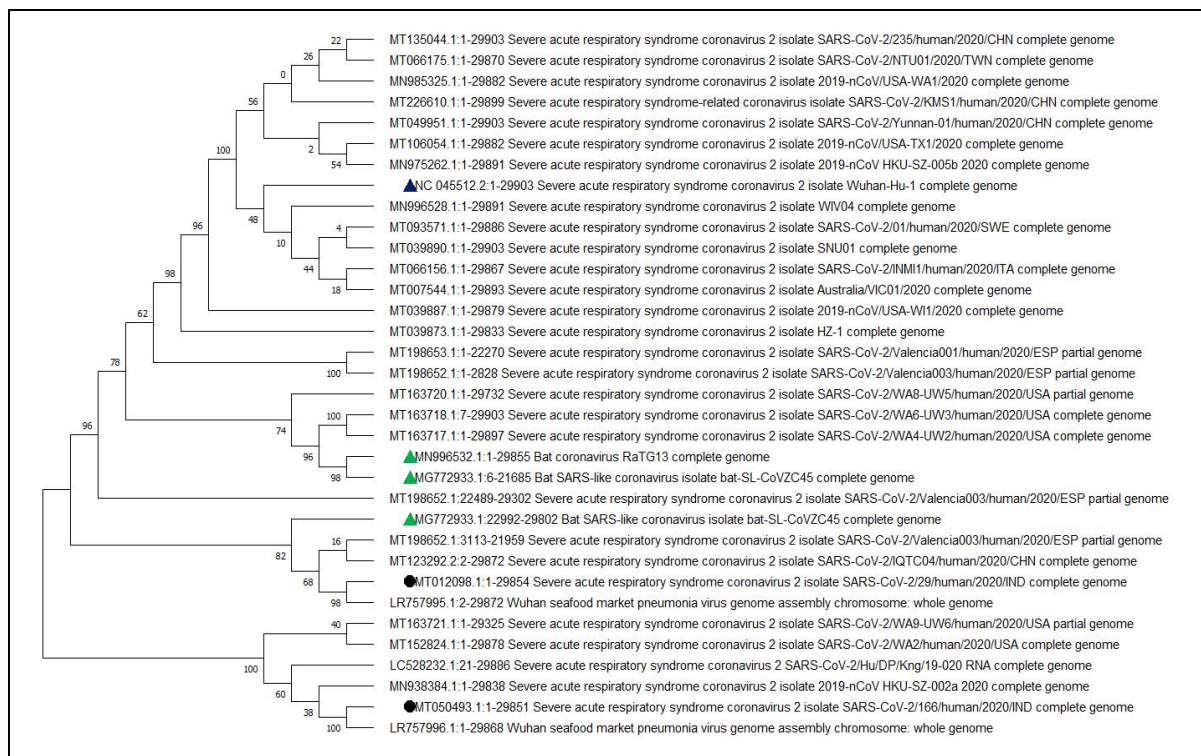


Fig.2. Phylogenetic tree (Bootstrap) of the complete genomes of severe acute respiratory syndrome coronavirus 2 viruses. Indian viruses are shown in black circle

Nucleotide Position	MT012098	MT050493
6488	C	T
6682	T	C
8769	C	T
14644	T	C
16864	C	T
17360	T	C
22772	T	G
24338	C	T
28131	T	C

Table 2: Representation of the nucleotide position of both the Indian isolate genome and its nucleotide change

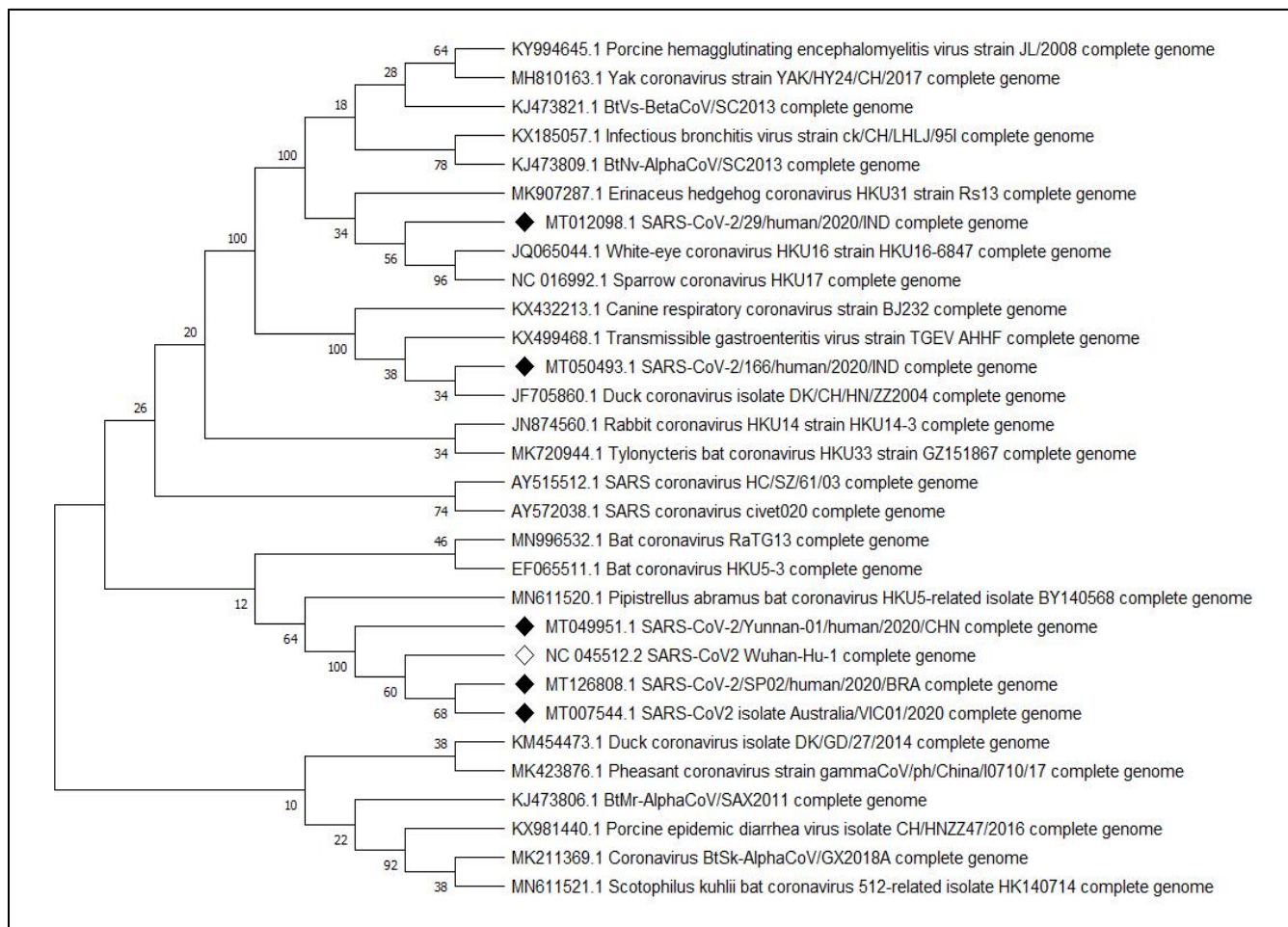


Fig.3. Phylogenetic tree (Bootstrap) of the complete genomes of Coronavirus from other species and human severe acute respiratory syndrome coronavirus 2 viruses. Indian viruses are shown in black diamond shape.

Phylogenetic study of coronavirus genome with diverse organisms showed, highest log likelihood value of -1064822.43 along with bootstrap consensus tree of 50 replicates. In this analysis a total of 31116 positions in the final dataset were used.

Though two Coronavirus from Indian patient had history from Wuhan travel and returned to India, Kerala state. In **Fig.3** human corona virus (MT012098.1) is closely related to White-eye coronavirus (JQ065044.1) and sparrow coronavirus (NC016992.1). The second Indian human coronavirus genome (MT050493.1) was closely related to Duck coronavirus (JF705860), Transmissible gastroenteritis (KX499468.1) and Canine respiratory coronavirus (KX432213.1). Whereas, all the other human affecting coronavirus genome from China, Wuhan, Brazile,

Australia were closely related and they were adjacent to Bat coronavirus (MN996532.1, EF065511.1, MN611520.1), civet coronavirus AY572038.1 as a secondary neighborhood close to the human coronavirus next to bat virus. Though it is not conclusive, the coronavirus from sparrow and white-eye are more close to Indian isolates, which indicates they may be associated with the patients from other species of animal sources.

Discussion

The emergence and rapid spread of COVID-19 signifies a perfect epidemiological storm. COVID-19 a member of the genus Betacoronavirus, subgenus - Sarbecovirus as like SARS-CoV, but MERS-CoV belongs to Merbecovirus (subgenus) [12, 23-24] . The RaTG13 is 96% identical to COVID-19 at the nucleotide level, but the receptor binding domain (RBD) is only 85% similar and shared only one of the six critical amino acid residues [25]. Still, the COVID-19 RBD for human ACE2 receptor found to be strong and functional [26] which armor the virus towards human respiratory system.

Research Group of South China Agricultural University analyzed more than 1,000 metagenomic samples, and they found 70% of pangolins were positive for the coronavirus. In addition, virus isolate from pangolin shared 99% sequence similarity with the current infected human strain SARS-CoV-2 [27] and they addressed pangolins may be one of the intermediate hosts for SARS-CoV-2 later they were embraced to be a miscommunication of data reported [28] Infact, only 90% genome were homology to SARS-CoV-2 genome and Coronavirus from Pangolins. This incidence was a best example, how the scientific and public media were exaggerating the data without solid evident.

Inspite, the 96% identity of SARS-CoV-2 with the Bat coronavirus presumes, they are very closely related to SARSCoV- 2, in virtual this likely represents more than 20 years of RNA sequence evolution, whcih may occure if the molecular clock emerges at an uncertain rate if there was strong adaptive evolution of the virus in humans[25]. Available bat coronavirus genome was studied from Yunnan province, over 1,500 km from Wuhan. There are few bat coronaviruses from Hubei province, and those that have been sequenced are

relatively distant to SARS-CoV-2 in phylogenetic trees [29]. The available data on bat viruses is strongly biased toward some geographical locations, which needs further study [25] .

The two Indian SARS-CoV-2 sequences were found to be non-identical (0.04% nt divergence), and the result of phylogenetic analysis indicated they are not in same clade, carries two different lineage which indicates they are non-identical source of infection [19]. Further multiple genome sequencing of Coronavirus from Indian patients will give us better understanding about the source of infection and mutation rate among the patient to patient and point of contact. The phylogenetic analysis of two Indian isolates elucidates strong association with Bat virus genome, inspite the close association with duck and sparrow coronavirus were double checked with the genome blast given no statistical significance. Inspite, We estimate, if new coronavirus genome sequence from other animals like Bats, Pangolin, Civet or any other animal associated with Huanan South China Seafood Market in Wuhan, Hubei Province, China, may give us solid source of infection and the mode of transmission from animal to Human can be traced. Since, the 3-3.95 % genome difference in a RNA virus between SARS-CoV-2 and RaTG13 will not happen in a year and we are lacking the exact source or primary host of this novel coronavirus.

In India, as on April 17, 2020 18:00 IST, totally 13,815 confirmed cases, 1955 recovered cases, 11,403 active cases and 457 deaths. Currently, Maharastra, Delhi and Tamil Nadu were respectively top three affected States/Union Territory of India. The complete details were represented in the **Table 3**. Despite, India had cases from Wuhan to India-Kerala state by January 4th week 2020, gradually; the cases were increased and identified from patients with travel history of various other countries and regions **Fig.4**.. The Government of India made complete Lockdown on March 24, 2020 midnight to April 15, 2020 early morning (21 days) as a first schedule. Second schedule announced by Honourable Prime Minister of India Mr. Narendra Modi on April 14th 10 am, 2020 that the lockdown will be extended further to grab the spread of COVID-19 from local transmission (stage 2) to community transmission (stage 3) from April 15 early morning to May 3, 2020 early morning. This will further reduce the number of new infection rate, and the existing patients may be identified and treated according to the WHO guidelines. Inspite of all the effort taken, the

rate of new cases has been steeply increased over the April 3rd week and the list of confirmed, dead and recovered details shown in the Table.3.

Position	STATE/Union Territory	CONFIRMED	ACTIVE	RECOVERED	DECEASED
1	Maharashtra	3,202	2,708	300	194
2	Delhi	1,640	1,550	52	38
3	Tamil Nadu	1,323	1,025	283	15
4	Rajasthan	1,193	993	183	17
5	Madhya Pradesh	1,164	1,039	70	55
6	Gujarat	1,021	909	74	38
7	Uttar Pradesh	846	759	74	13
8	Telangana	700	495	187	18
9	Andhra Pradesh	572	523	35	14
10	Kerala	395	138	255	2
11	Karnataka	359	258	88	13
12	Jammu and Kashmir	314	271	38	5
13	West Bengal	255	194	51	10
14	Haryana	222	137	82	3
15	Punjab	211	167	30	14
16	Bihar	83	45	37	1
17	Odisha	60	40	19	1
18	Uttarakhand	40	31	9	-
19	Chhattisgarh	36	13	23	-
20	Himachal Pradesh	35	17	16	2
21	Assam	34	28	5	1
22	Jharkhand	29	27	-	2
23	Chandigarh	21	12	9	-
24	Ladakh	18	4	14	-
25	Andaman and Nicobar Islands	12	1	11	-
26	Meghalaya	9	8	-	1
27	Goa	7	1	6	-
28	Puducherry	7	6	1	-
29	Manipur	2	1	1	-
30	Tripura	2	1	1	-
31	Arunachal Pradesh	1	-	1	-
32	Mizoram	1	1	-	-
33	Nagaland	1	1	-	-
	Total	13,815	11,403	1,955	457

Table 3. Representation of State wise confirmed cases, Active cases, Recovered and Deceased cases as on April 17, 2020 18:55 IST [Source :<https://www.covid19india.org/>]



Fig. 4. Graphical representation of confirmed, recovered, deceased cases from February 2020 to April 16, 2020 in India [Source :<https://www.covid19india.org/>]

Government of India and the health authorities of all the states had taken necessary action to curb spread and made containment plan and enhanced surveillances for the virus and its restricted movement. ICMR-NIV, Pune doing splendid work towards the identification of corona patients through Real-time quantitative PCR and rapid kit based methods. Currently, the diagnoses were carried out for the patients with clinical symptoms and or travel history or their contacts. In near future, the Government has planned to test everyone with symptoms irrespective of travel or contact history. This will curb the case of COVID-19 in India.

The world wide data alarms USA, Italy, Spain, UK, Iran, Netherlands and other countries with high rate of death cases, warrants early diagnosis and treatment, though there is no specific drug against COVID-19. The perfect lockdown, social distancing and safety measures plays vital role in this current scenario to reduce the number of new cases arises in the world Table 4 (7 parts). Fig 5A-C.

In spite of all the effort taken all over the world, USA has been affected to the highest level in the world, where 6,32,781 confirmed cases and 28,221 deaths were reported as on April 17, 2020. Next to USA, the top 9 countries were Italy, Spain, France, The United Kingdom, Iran (Islamic Republic of), China, Belgium, Germany, Netherlands have confirmed cases of 1,65,155, 1,77,633, 1,05,155, 98,480, 77,995, 84,149, 33,573, 1,30,450 and 2,81,53 respectively and the death toll reported to be Italy 21,647, Spain 18,579, France 17,146, The United Kingdom 12,868, Iran (Islamic Republic of) 4,869, China 4,642, Belgium 4,440, Germany 3,569, Netherlands 3,134 as per WHO report (April 17, 2020 2:00am CEST). Although Germany position to be 4th as per the confirmed cases, but the number of death reported till date was lower compared to other countries, which made it as 9th position. The complete country wise cumulative confirmed cases and cumulative deaths between April 7th 2020 and April 17th 2020 was calculated and the percentage wise confirmed cases and death rate in 10 days was calculated and shown in the Table. 4.

The percentage of death rate increased in just 10 days alarms the world and it should be recorded in the literature for future study. Hence, we included the whole data in the table, and the top 20 countries with death fold increase in 10 days between April 7, 2020 to April 17, 2020 as follows United States of America 195%, Italy 31%, Spain 42%, France 93%, The United Kingdom 139%, Iran (Islamic Republic of) 26%, China 39%, Belgium 172%, Germany 122%, Netherlands 68%, Brazil 257%, Turkey 134%, Sweden 152%, Canada 258%, Switzerland 52%, Portugal 93%, Indonesia 124%, Mexico 378%, Ireland 155%, India 263%.

Continued testing of people, irrespective of symptoms and travel history is the need of time to scrutinize the asymptomatic carrier people among the group of population, will cut down the number of death rate. This April 2020 plays major role in the steady death toll increase among various countries mentioned above. Early diagnosis, appropriate treatment, containment zone formation, Quarantine the people with symptoms may help us to flat the rate of infection and death rate.

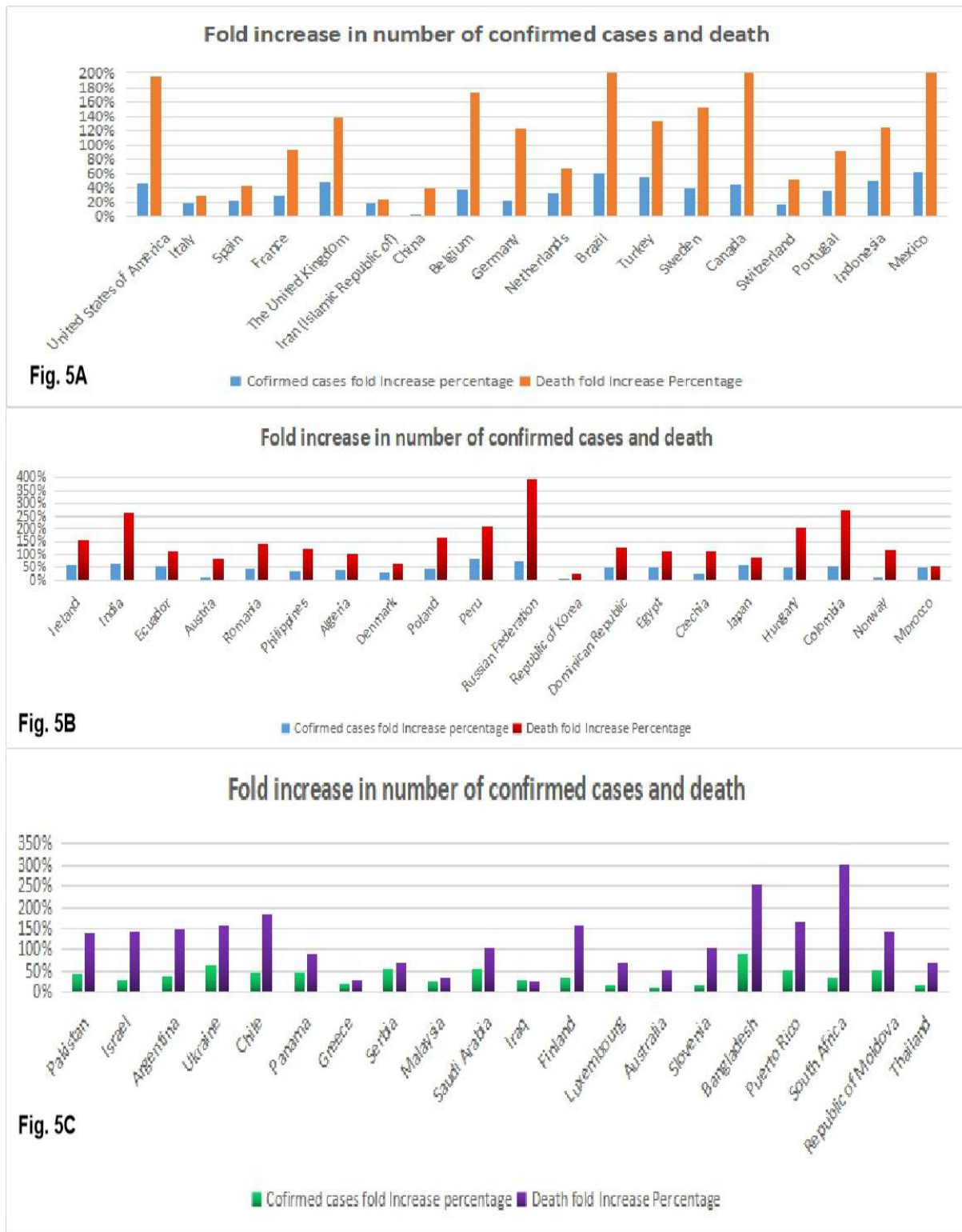


Fig. 5A-C. Representation of major country wise confirmed case fold change and Death fold change between April 7, 2020 to April 17, 2020 (10 days) as per WHO report [1].

Possible ending of COVID-19

The pandemic COVID-19 outbreak may have handful different endings. If nature or God give us the luck, the most favourable scenario would be COVID-19 unconsciously petering out as was the case with SARS in 2003. The second chance would be like MERS which, continue sporadically pop up over the years. The third one in worst scenario, it may create more deaths over the year as the sinister path like 1918 Spanish influenza over a decade [30]. Let the nature and future determine it.

Conclusion

The dynamic increase of number of confirmed cases and genome sequences from all over the world made us to register the various conditions as on April 1st week, 2020. Every one hour, the world wide data has been updated in various resources like WHO, John Hopkins website, Worldometer. In this context, our study from 2 Indian isolate provided us the trace for infection source and the spread rate increases the point mutation, which may either reduce the virulent or increase the pathogenicity of novel coronavirus, SARS-CoV-2 mediated COVID-19 which needs further study.

Table 4: Representative of complete country wise cumulative confirmed cases and cumulative deaths between April 7th 2020 and April 17th 2020 was calculated and the percentage wise confirmed cases and death rate in 10 days were shown in 7 parts (30 countries in each part), Totally 211 countries/areas or regions were given as per WHO report on April 17, 2020 [1]

Position	Country Name	As on April 7, 2020	As on April 17, 2020	Confirmed cases in 10 days between 7.4.2020 to 17.4.2020	Cofirmed cases fold Increase in 10 days (Percentage)	As on April 7, 2020	As on April 17, 2020	Deaths in 10 days between 7.4.2020 to 17.4.2020	Death fold Increase in 10 days (Percentage)
		Cumulative Confirmed (numbers)	Cumulative Confirmed (numbers)			Cumulative Deaths (numbers)	Cumulative Deaths (numbers)		
1	United States of America	333811	632781	298970	47%	9559	28221	18662	195%
2	Italy	132547	165155	32608	20%	16525	21647	5122	31%
3	Spain	135032	177633	42601	24%	13055	18579	5524	42%
4	France	73488	105155	31667	30%	8896	17146	8250	93%
5	The United Kingdom	51612	98480	46868	48%	5373	12868	7495	139%
6	Iran (Islamic Republic of)	62589	77995	15406	20%	3872	4869	997	26%
7	China	83071	84149	1078	1%	3340	4642	1302	39%
8	Belgium	20814	33573	12759	38%	1632	4440	2808	172%
9	Germany	99225	130450	31225	24%	1607	3569	1962	122%
10	Netherlands	18803	28153	9350	33%	1867	3134	1267	68%
11	Brazil	11130	28320	17190	61%	486	1736	1250	257%
12	Turkey	30217	69392	39175	56%	649	1518	869	134%
13	Sweden	7206	11927	4721	40%	477	1203	726	152%
14	Canada	15806	28884	13078	45%	293	1048	755	258%
15	Switzerland	21574	26336	4762	18%	641	973	332	52%
16	Portugal	11730	18091	6361	35%	311	599	288	93%
17	Indonesia	2738	5516	2778	50%	221	496	275	124%
18	Mexico	2143	5847	3704	63%	94	449	355	378%
19	Ireland	5364	12547	7183	57%	174	444	270	155%
20	India	4421	12380	7959	64%	114	414	300	263%
21	Ecuador	3747	8225	4478	54%	191	403	212	111%
22	Austria	12297	14370	2073	14%	220	393	173	79%
23	Romania	4057	7216	3159	44%	157	372	215	137%
24	Philippines	3660	5660	2000	35%	163	362	199	122%
25	Algeria	1423	2268	845	37%	173	348	175	101%
26	Denmark	4681	6681	2000	30%	187	309	122	65%
27	Poland	4413	7582	3169	42%	107	286	179	167%
28	Peru	2281	11475	9194	80%	83	254	171	206%
29	Russian Federation	6343	27938	21595	77%	47	232	185	394%
30	Republic of Korea	10331	10635	304	3%	192	230	38	20%

Position	Country Name	As on April 7, 2020	As on April 17, 2020	Confirmed cases in 10 days between 7.4.2020 to 17.4.2020	Confirmed cases fold Increase in 10 days (Percentage)	As on April 7, 2020	As on April 17, 2020	Deaths in 10 days between 7.4.2020 to 17.4.2020	Death fold Increase in 10 days (Percentage)
		Cumulative Confirmed (numbers)	Cumulative Confirmed (numbers)			Cumulative Deaths (numbers)	Cumulative Deaths (numbers)		
31	Dominican Republic	1828	3755	1927	51%	86	196	110	128%
32	Egypt	1322	2505	1183	47%	85	183	98	115%
33	Czechia	4822	6303	1481	23%	78	166	88	113%
34	Japan	3906	9167	5261	57%	80	148	68	85%
35	Hungary	817	1652	835	51%	47	142	95	202%
36	Colombia	1485	3105	1620	52%	35	131	96	274%
37	Norway	5755	6677	922	14%	59	130	71	120%
38	Morocco	1141	2251	1110	49%	83	128	45	54%
39	Pakistan	4005	6919	2914	42%	54	128	74	137%
40	Israel	8611	12200	3589	29%	52	126	74	142%
41	Argentina	1554	2598	1044	40%	46	115	69	150%
42	Ukraine	1462	4162	2700	65%	45	115	70	156%
43	Chile	4815	8807	3992	45%	37	105	68	184%
44	Panama	1988	3751	1763	47%	54	103	49	91%
45	Greece	1755	2192	437	20%	79	102	23	29%
46	Serbia	2200	4873	2673	55%	58	99	41	71%
47	Malaysia	3793	5182	1389	27%	62	84	22	35%
48	Saudi Arabia	2795	6380	3585	56%	41	83	42	102%
49	Iraq	1031	1434	403	28%	64	80	16	25%
50	Finland	2176	3237	1061	33%	28	72	44	157%
51	Luxembourg	2843	3373	530	16%	41	69	28	68%
52	Australia	5844	6468	624	10%	42	63	21	50%
53	Slovenia	1021	1248	227	18%	30	61	31	103%
54	Bangladesh	164	1572	1408	90%	17	60	43	253%
55	Puerto Rico	513	1043	530	51%	21	56	35	167%
56	South Africa	1686	2605	919	35%	12	48	36	300%
57	Republic of Moldova	965	2049	1084	53%	19	46	27	142%
58	Thailand	2258	2672	414	15%	27	46	19	70%
59	North Macedonia	570	974	404	41%	21	45	24	114%
60	Bosnia and Herzegovina	695	1116	421	38%	28	41	13	46%

Position	Country Name	As on April 7, 2020	As on April 17, 2020	Confirmed cases in 10 days between 7.4.2020 to 17.4.2020	Confirmed cases fold Increase in 10 days (Percentage)	As on April 7, 2020	As on April 17, 2020	Deaths in 10 days between 7.4.2020 to 17.4.2020	Death fold Increase in 10 days (Percentage)
		Cumulative Confirmed (numbers)	Cumulative Confirmed (numbers)			Cumulative Deaths (numbers)	Cumulative Deaths (numbers)		
61	Belarus	700	3728	3028	81%	13	36	23	177%
62	Bulgaria	549	747	198	27%	22	36	14	64%
63	San Marino	277	393	116	30%	32	36	4	13%
64	Estonia	1108	1402	294	21%	19	35	16	84%
65	Honduras	298	426	128	30%	22	35	13	59%
66	Tunisia	596	780	184	24%	22	35	13	59%
67	Croatia	1222	1741	519	30%	16	34	18	113%
68	Andorra	540	673	133	20%	21	33	12	57%
69	United Arab Emirates	2076	5365	3289	61%	11	33	22	200%
70	Burkina Faso	345	543	198	36%	17	32	15	88%
71	Afghanistan	367	794	427	54%	11	29	18	164%
72	Bolivia (Plurinational State of)	183	441	258	59%	11	29	18	164%
73	Lithuania	843	1091	248	23%	14	29	15	107%
74	Cuba	350	862	512	59%	9	27	18	200%
75	Albania	377	494	117	24%	22	25	3	14%
76	Democratic Republic of the Congo	161	287	126	44%	18	23	5	28%
77	Lebanon	548	663	115	17%	19	21	2	11%
78	Armenia	833	1135	302	27%	8	18	10	125%
79	Cameroon	555	855	300	35%	9	17	8	89%
80	Cyprus	465	715	250	35%	14	17	3	21%
81	Kazakhstan	670	1295	625	48%	6	16	10	167%
82	Niger	253	609	356	58%	10	15	5	50%
83	Azerbaijan	641	1253	612	49%	7	13	6	86%
84	undefined	712	712	0	0%	11	13	2	18%
85	Mali	39	171	132	77%	4	13	9	225%
86	Kenya	142	234	92	39%	4	11	7	175%
87	New Zealand	943	1086	143	13%	1	11	10	1000%
88	Nigeria	232	373	141	38%	5	11	6	120%
89	Singapore	1375	4427	3052	69%	6	10	4	67%
90	Kosovo[1]	165	397	232	58%	3	9	6	200%

Position	Country Name	As on April 7, 2020	As on April 17, 2020	Confirmed cases in 10 days between 7.4.2020 to	Cofirmed cases fold Increase in 10 days (Percentage)	As on April 7, 2020	As on April 17, 2020	Deaths in 10 days between 7.4.2020 to	Death fold Increase in 10 days (Percentage)
		Cumulative Confirmed (numbers)	Cumulative Confirmed (numbers)			Cumulative Deaths (numbers)	Cumulative Deaths (numbers)		
91	Mauritius	244	324	80	25%	7	9	2	29%
92	Sint Maarten	37	57	20	35%	6	9	3	50%
93	Uruguay	406	493	87	18%	6	9	3	50%
94	Venezuela (Bolivarian Republic of)	159	197	38	19%	3	9	6	200%
95	Bahamas	29	53	24	45%	5	8	3	60%
96	Ghana	214	641	427	67%	5	8	3	60%
97	Guadeloupe	135	145	10	7%	7	8	1	14%
98	Iceland	1562	1727	165	10%	6	8	2	33%
99	Martinique	149	159	10	6%	4	8	4	100%
100	Paraguay	113	174	61	35%	5	8	3	60%
101	Trinidad and Tobago	105	114	9	8%	8	8	0	0%
102	Bahrain	811	1698	887	52%	4	7	3	75%
103	Guernsey	154	223	69	31%	3	7	4	133%
104	Jordan	349	401	52	13%	6	7	1	17%
105	Qatar	1832	4103	2271	55%	4	7	3	75%
106	Sri Lanka	180	238	58	24%	6	7	1	17%
107	Côte d'Ivoire	323	688	365	53%	3	6	3	100%
108	El Salvador	69	164	95	58%	3	6	3	100%
109	Guyana	29	55	26	47%	4	6	2	50%
110	Jersey	155	217	62	29%	3	6	3	100%
111	Liberia	14	73	59	81%	3	6	3	100%
112	Slovakia	534	863	329	38%	2	6	4	200%
113	Barbados	56	75	19	25%	1	5	4	400%
114	Bermuda	37	81	44	54%	0	5	5	50%
115	Congo	45	117	72	62%	5	5	0	0%
116	Guam	113	135	22	16%	4	5	1	25%
117	Guatemala	70	196	126	64%	3	5	2	67%
118	Jamaica	58	125	67	54%	3	5	2	67%
119	Kyrgyzstan	228	466	238	51%	4	5	1	25%
120	Latvia	542	666	124	19%	1	5	4	400%

Position	Country Name	As on April 7, 2020	As on April 17, 2020	Confirmed cases in 10 days between 7.4.2020 to	Cofirmed cases fold Increase in 10 days (Percentage)	As on April 7, 2020	As on April 17, 2020	Deaths in 10 days between 7.4.2020 to	Death fold Increase in 10 days (Percentage)
		Cumulative Confirmed (numbers)	Cumulative Confirmed (numbers)			Cumulative Deaths (numbers)	Cumulative Deaths (numbers)		
121	Somalia	7	80	73	91%	0	5	5	50%
122	Sudan	14	32	18	56%	2	5	3	150%
123	Togo	44	81	37	46%	3	5	2	67%
124	Costa Rica	454	626	172	27%	2	4	2	100%
125	Montenegro	223	288	65	23%	2	4	2	100%
126	Myanmar	22	85	63	74%	1	4	3	300%
127	Oman	371	1019	648	64%	2	4	2	100%
128	United Republic of Tanzania	24	94	70	74%	1	4	3	300%
129	Uzbekistan	472	1349	877	65%	2	4	2	100%
130	Ethiopia	44	92	48	52%	1	3	2	200%
131	Georgia	195	336	141	42%	2	3	1	50%
132	Haiti	24	41	17	41%	1	3	2	200%
133	Kuwait	743	1524	781	51%	1	3	2	200%
134	Malta	241	399	158	40%	0	3	3	30%
135	Mayotte	164	233	69	30%	2	3	1	50%
136	Zimbabwe	9	23	14	61%	1	3	2	200%
137	Angola	16	19	3	16%	2	2	0	0%
138	Antigua and Barbuda	15	23	8	35%	0	2	2	20%
139	Aruba	64	95	31	33%	0	2	2	20%
140	Belize	7	18	11	61%	1	2	1	100%
141	Djibouti	121	591	470	80%	0	2	2	20%
142	Isle of Man	127	254	127	50%	1	2	1	100%
143	Malawi	4	16	12	75%	0	2	2	20%
144	Northern Mariana Islands (Commonwealth of the)	8	13	5	38%	1	2	1	100%
145	occupied Palestinian territory, including east Jerusalem	254	294	40	14%	1	2	1	100%
146	Saint Martin	31	35	4	11%	2	2	0	0%
147	Senegal	226	335	109	33%	2	2	0	0%
148	Syrian Arab Republic	19	33	14	42%	2	2	0	0%
149	Zambia	39	48	9	19%	1	2	1	0%
150	Benin	23	37	14	38%	1	1	0	0%

Position	Country Name	As on April 7, 2020	As on April 17, 2020	Confirmed cases in 10 days between 7.4.2020 to 17.4.2020	Cofirmed cases fold Increase in 10 days (Percentage)	As on April 7, 2020	As on April 17, 2020	Deaths in 10 days between 7.4.2020 to 17.4.2020	Death fold Increase in 10 days (Percentage)
		Cumulative Confirmed (numbers)	Cumulative Confirmed (numbers)			Cumulative Deaths (numbers)	Cumulative Deaths (numbers)		
151	Botswana	6	15	9	60%	1	1	0	0%
152	Brunei Darussalam	135	136	1	1%	1	1	0	0%
153	Cabo Verde	7	55	48	87%	1	1	0	0%
154	Cayman Islands	39	60	21	35%	1	1	0	0%
155	Curacao	13	14	1	7%	1	1	0	0%
156	Eswatini	9	16	7	44%	0	1	1	0%
157	Gabon	21	95	74	78%	1	1	0	0%
158	Gambia	4	9	5	56%	1	1	0	0%
159	Guinea	111	438	327	75%	0	1	1	0%
160	Libya	19	48	29	60%	1	1	0	0%
161	Liechtenstein	78	81	3	4%	1	1	0	0%
162	Mauritania	6	7	1	14%	1	1	0	0%
163	Nicaragua	6	9	3	33%	1	1	0	0%
164	Suriname	10	10	0	0%	1	1	0	0%
165	Turks and Caicos Islands	5	11	6	55%	1	1	0	0%
166	United States Virgin Islands	43	51	8	16%	1	1	0	0%
167	Anguilla	3	3	0	0%	0	0	0	0%
168	Bhutan	5	5	0	0%	0	0	0	0%
169	Bonaire, Sint Eustatius and Saba	2	4	2	50%	0	0	0	0%
170	British Virgin Islands	3	3	0	0%	0	0	0	0%
171	Burundi	3	5	2	40%	0	0	0	0%
172	Cambodia	115	122	7	6%	0	0	0	0%
173	Central African Republic	9	12	3	25%	0	0	0	0%
174	Chad	9	27	18	67%	0	0	0	0%
175	Dominica	14	16	2	13%	0	0	0	0%
176	Equatorial Guinea	16	51	35	69%	0	0	0	0%
177	Eritrea	29	35	6	17%	0	0	0	0%
178	Falkland Islands (Malvinas)	2	11	9	82%	0	0	0	0%
179	Faroe Islands	181	184	3	2%	0	0	0	0%
180	Fiji	15	17	2	12%	0	0	0	0%

Position	Country Name	As on April 7, 2020	As on April 17, 2020	Confirmed cases in 10 days between 7.4.2020 to 17.4.2020	Cofirmed cases fold Increase in 10 days (Percentage)	As on April 7, 2020	As on April 17, 2020	Deaths in 10 days between 7.4.2020 to 17.4.2020	Death fold Increase in 10 days (Percentage)
		Cumulative Confirmed (numbers)	Cumulative Confirmed (numbers)			Cumulative Deaths (numbers)	Cumulative Deaths (numbers)		
181	French Guiana	68	96	28	29%	0	0	0	0%
182	French Polynesia	42	55	13	24%	0	0	0	0%
183	Gibraltar	103	129	26	20%	0	0	0	0%
184	Greenland	11	11	0	0%	0	0	0	0%
185	Grenada	12	14	2	14%	0	0	0	0%
186	Guinea-Bissau	33	46	13	28%	0	0	0	0%
187	Holy See	7	8	1	13%	0	0	0	0%
188	Lao People's Democratic Republic	12	19	7	37%	0	0	0	0%
189	Madagascar	85	117	32	27%	0	0	0	0%
190	Maldives	19	23	4	17%	0	0	0	0%
191	Monaco	40	93	53	57%	0	0	0	0%
192	Mongolia	15	31	16	52%	0	0	0	0%
193	Montserrat	6	11	5	45%	0	0	0	0%
194	Mozambique	10	29	19	66%	0	0	0	0%
195	Namibia	16	16	0	0%	0	0	0	0%
196	Nepal	9	16	7	44%	0	0	0	0%
197	New Caledonia	18	18	0	0%	0	0	0	0%
198	Papua New Guinea	1	7	6	86%	0	0	0	0%
199	Réunion	349	394	45	11%	0	0	0	0%
200	Rwanda	104	138	34	25%	0	0	0	0%
201	Saint Barthélemy	6	6	0	0%	0	0	0	0%
202	Saint Kitts and Nevis	10	14	4	29%	0	0	0	0%
203	Saint Lucia	14	15	1	7%	0	0	0	0%
204	Saint Vincent and the Grenadines	7	12	5	42%	0	0	0	0%
205	Sao Tome and Principe	4	4	0	0%	0	0	0	0%
206	Seychelles	11	11	0	0%	0	0	0	0%
207	Sierra Leone	6	15	9	60%	0	0	0	0%
208	South Sudan	1	4	3	75%	0	0	0	0%
209	Timor-Leste	1	18	17	94%	0	0	0	0%
210	Uganda	52	55	3	5%	0	0	0	0%
211	Viet Nam	245	268	23	9%	0	0	0	0%

Acknowledgement

I thank **Dr Giridharan Appaswamy**, Chief Scientific Officer, LifeCell International Private Limited, Chennai, for his continuous support and encouragement to do this research work. I thank Management, Lifecell International Pvt Ltd and all the lab members from Lifecell, R&D division for their support during this work.

References

1. World Health Organization. Coronavirus disease(COVID-2019) situation reports. WHO; 2020. Available from: <https://www.who.int/emergencies/diseases/novelcoronavirus-2019/situation-reports>, accessed on April 17, 2020.
2. Cui J, Li F, Shi ZL. Origin and evolution of pathogenic coronaviruses. *Nat Rev Microbiol* 2019; 17 : 181-92
3. Li C, Yang Y, Ren L. Genetic evolution analysis of 2019 novel coronavirus and coronavirus from other species. *Infection, Genetics and Evolution*. 2020 Mar 10:104285.
4. Van der Hoek, L. Human coronaviruses: What do they cause? *Antivir. Ther.* 2007, 12, 651–658
5. Lim, Yvonne Xinyi, et al. "Human coronaviruses: a review of virus–host interactions." *Diseases*. 2016, 4,3 : 26.
6. Peiris JS, Yuen KY, Osterhaus AD, Stohr K: The severe acute respiratory syndrome. *N Engl J Med* 2003, 349:2431-2441. 14.
7. Wang LF, Eaton BT: Bats, civets and the emergence of SARS. *Curr Top Microbiol Immunol* 2007, 315:325-344.
8. Zaki AM, van Boheemen S, Bestebroer TM, Osterhaus AD, Fouchier RA: Isolation of a novel coronavirus from a man with pneumonia in Saudi Arabia. *N Engl J Med* 2012, 367:1814-1820
9. Middle East respiratory syndrome coronavirus (MERS-CoV) on World Wide Web URL: <http://www.who.int/emergencies/mers-cov/en/>.
10. Lim YX, Ng YL, Tam JP, Liu DX. Human coronaviruses: a review of virus–host interactions. *Diseases*. 2016 9;4(3):26.

11. Zhu N, Zhang D, Wang W, Li X, Yang B, Song J, et al. A novel coronavirus from patients with pneumonia in China, 2019. *N Engl J Med*. 2020. <https://doi.org/10.1056/NEJMoa2001017>
12. Zhou, P., Yang, X.L., Wang, X.G., Hu, B., Zhang, L., Zhang, W., Si, H.R., Zhu, Y., Li, B., Huang, C.L., et al. (2020). A pneumonia outbreak associated with a new coronavirus of probable bat origin. *Nature* 579, 270–273
13. Coutard, B., Valle, C., de Lamballerie, X., Canard, B., Seidah, N.G., and Decroly, E. (2020). The spike glycoprotein of the new coronavirus 2019-nCoV contains a furin-like cleavage site absent in CoV of the same clade. *Antiviral Res.* 176, 104742.
14. Jiang, S., Shi, Z.L., 2020. The first disease X is caused by a highly transmissible acute respiratory syndrome coronavirus. *Viol. Sin.* <https://doi.org/10.1007/s12250-020-00206-5>
15. Association, S.E.G.f.C.o.t.E.o.N.C.P.o.t.C.P.M., 2020. An update on the epidemiological characteristics of novel coronavirus pneumonia (COVID-19). *Zhonghua Liu Xing Bing Xue Za Zhi* 41, 139–144. <https://doi.org/10.3760/cma.j.issn.0254-6450.2020.02.002>
16. Guo, Q., Li, M., Wang, C., Wang, P., Fang, Z., Tan, J., Wu, S., Xiao, Y., Zhu, H., 2020. Host and infectivity prediction of Wuhan 2019 novel coronavirus using deep learning algorithm. *bioRxiv.* <https://doi.org/10.1101/2020.01.21.914044>.
17. Ji, W., Wang, W., Zhao, X., Zai, J., Li, X., 2020. Cross-species transmission of the newly identified coronavirus 2019-nCoV. *J. Med. Virol.* 92, 433–440. <https://doi.org/10.1002/jmv.25682>.
18. Jiang, S., Shi, Z.L., 2020. The first disease X is caused by a highly transmissible acute respiratory syndrome coronavirus. *Viol. Sin.* <https://doi.org/10.1007/s12250-020-00206-5>.
19. Yadav PD, Potdar VA, Choudhary ML, Nyayanit DA, Agrawal M, Jadhav SM, Majumdar TD, Shete-Aich A, Basu A, Abraham P, Cherian SS. Full-genome sequences of the first two SARS-CoV-2 viruses from India. *The Indian journal of medical research.* 2020 Mar 27.
20. Tamura K. and Nei M. Estimation of the number of nucleotide substitutions in the control region of mitochondrial DNA in humans and chimpanzees. *Molecular Biology and Evolution* 1993, 10:512-526.
21. Kimura M. A simple method for estimating evolutionary rate of base substitutions through comparative studies of nucleotide sequences. *Journal of Molecular Evolution* 1980, 16:111-120

22. Kumar S., Stecher G., Li M., Knyaz C., and Tamura K. MEGA X: Molecular Evolutionary Genetics Analysis across computing platforms. *Molecular Biology and Evolution* 2018, **35**:1547-1549.
23. Lu, R., Zhao, X., Li, J., Niu, P., Yang, B., Wu, H., Wang, W., Song, H., Huang, B., Zhu, N., Bi, Y., Ma, X., Zhan, F., Wang, L., Hu, T., Zhou, H., Hu, Z., Zhou, W., Zhao, L., Chen, J., Meng, Y., Wang, J., Lin, Y., Yuan, J., Xie, Z., Ma, J., Liu, W.J., Wang, D., Xu, W., Holmes, E.C., Gao, G.F., Wu, G., Chen, W., Shi, W., Tan, W., 2020. Genomic characterisation and epidemiology of 2019 novel coronavirus: implications for virus origins and receptor binding. *Lancet* 395, 565–574. [https://doi.org/10.1016/S0140-6736\(20\)30251-8](https://doi.org/10.1016/S0140-6736(20)30251-8).
24. Wu, F., Zhao, S., Yu, B., Chen, Y.-M., Wang, W., Song, Z.G., Hu, Y., Tao, Z.W., Tian, J.H., Pei, Y.Y., et al. (2020). A new coronavirus associated with human respiratory disease in China. *Nature* 579, 265–269.
25. Zhang YZ, Holmes EC. A Genomic Perspective on the Origin and Emergence of SARS-CoV-2. *Cell*. 2020 Mar 26.
26. Wrapp, D., Wang, N., Corbett, K.S., Goldsmith, J.A., Hsieh, C.-L., Abiona, O., Graham, B.S., and McLellan, J.S. (2020). Cryo-EM structure of the 2019-nCoV spike in the prefusion conformation. *Science* 367, 1260–1263
27. South China Agricultural University: Pangolin May Be a Potential Intermediate Host of New Coronavirus. Available online: <http://www.chinanews.com/sh/2020/02-07/9082279.shtml>
28. Xiao, K. et al. Preprint on bioRxiv <https://doi.org/10.1101/2020.02.17.951335> (2020).
29. Lin, X.-D., Wang, W., Hao, Z.-Y., Wang, Z.-X., Guo, W.-P., Guan, X.-Q., Wang, M.-R., Wang, H.-W., Zhou, R.-H., Li, M.-H., et al. (2017). Extensive diversity of coronaviruses in bats from China. *Virology* 507, 1–10.
30. Lee A. Wuhan novel coronavirus (COVID-19): why global control is challenging?. *Public health*. 2020 Feb 25;179:A1-2.
31. India COVID-19 update :<https://www.covid19india.org/>