

# **Disability-Adjusted Life-Years (DALYs) for Breast Cancer and Risk Factors in 195 countries: Findings from Global Burden of Disease Study 2017**

Jieyu Liu<sup>1</sup>, Jiaxiang Wang<sup>1</sup>

<sup>1</sup> *Jiangsu Key Laboratory of Preventive and Translational Medicine for Geriatric Diseases, School of Public Health, Medical College of Soochow University, Suzhou, China;*

**Short title:** DALYs for breast cancer and risk factors.

**\*Corresponding author:**

Jieyu Liu, MD, School of Public Health, Medical College of Soochow University, 199 Renai Road, Suzhou, China 215123. Email: [jieyulynne@163.com](mailto:jieyulynne@163.com)

**Conflicts of Interest and Source of Funding:** None were declared.

**Word count:** 2335.

**Number of Tables:** 2

**Number of Figures:** 5

## **Abstract**

**Background:** Breast cancer is a leading cancer burden for females. In order to picture the patterns and time trends of the breast cancer burden across different regions, the disability-adjusted life years (DALYs) were used to estimate breast cancer burden in 1990–2017.

**Methods:** Data from Global Burden of Disease Study 2017 (GBD 2017) was used to estimate the disability-adjusted life-years (DALYs) for the burden of breast cancer by locations, regions, years (with corresponding 95% uncertainty intervals [UI]). Besides, the associated potentially modifiable risk factors were estimated to provide targeted means for controlling the burden of breast cancer.

**Results:** All-age numbers of DALYs reached over 17.42 million years in 2017 globally, despite the decreasing trends in all-age and age-standardized rate. The rates for DALYs was the highest in Western Sub-Saharan Africa [694.23 (534.43 to 906.05)] in 2017. High fasting plasma glucose [1.07 million (0.20 to 2.43) DALYs] and high body-mass index (BMI) [0.81 million (0.27 to 1.53) DALYs] have become great attributors to DALYs of breast cancer in 2017.

**Conclusions:** The levels and trends in causes of DALYs of breast cancer, generally show similarities between 2007 and 2017, although differences exist. The differences observed countries can be attributed high fasting plasma glucose and high body-mass index across the world. Concerned efforts at national and regional levels are required to tackle the emerging burden of breast cancer in the world.

**Keywords:** Breast cancer; Global cancer burden; Disability-adjusted life-years; Risk factors

## **Introduction**

As one of the most common cancer in women, breast cancer claiming 181,004 lives and resulting in 17.7 million disability-adjusted life years (DALYs), making it one of the most severe burdensome cancer globally. The incidence case of breast cancer in women will reach approximately 3.2 million by 2050[1]. Without doubt, breast cancer is a great threat to women's health around the world[2].

Previous study from GBD 2016 showed that deaths from breast cancer increased from 1990 to 2016 and the incidence of breast cancer was higher in developed countries (high/very high HDI)[3]. However, this investigation only included incidence, deaths and mortality-to-incidence ratio (MIR), which was used as representative indicator of breast cancer survival, from available data and, in order to select incidence great than 1000 cases in 2016, they only recruited 102 countries for analysis[3]. However, the age-standardized incidence rates in some countries with less than 1000 incidence cases had increased drastically during the past periods[3].

Furthermore, Disability adjusted life years (DALYs), a summary measure of total health loss, was the sum of years of life-disability (YLDs) and years of life-lost (YLLs) for location, year, age and cause, which may be considered a better reflection of the burden of suffering caused by a disease than mortality rates[4]. An age-weighting function is used in DALY computation and values life years differently depending on the age of illness onset[5]. They are a useful analytical tool in cost-effectiveness analysis and are commonly used for comparison purposes[6]. Of note, the risk factors contributed for breast cancer globally and in different regions are disparate, which gain more practical application value for preventing breast cancer.

This paper aims to understand the burden of breast cancer in 195 countries, and the burden of breast cancer is evaluated by understanding the disability adjusted life year (DALY), which is calculated using years of life lost (YLL) and years lost due to disability (YLD), according to Global Burden of Disease Study (GBD) 2017. Furthermore, attributed risk factors for breast cancer varied significantly across different regions and time periods.

## **Methods**

### *Data sources*

Global Burden of Diseases, Injuries, and Risk Factors Study (GBD 2017) data were used to analysis DALYs for breast cancer. GBD uses all available up-to-date epidemiological data including a comprehensive assessment of incidence, prevalence, and years lived with disability (YLDs) and improved standardized methods to provide a comparative assessment of health loss across 359 diseases and injuries and 73 age-and-sex groups for 195 countries and territories[7].

As with GBD 2017, this analysis adheres to the Guidelines for Accurate and Transparent Health Estimates Reporting (GATHER) standards developed by WHO and others[8], which include recommendations on documentation of data sources, estimation methods, and statistical analysis. All data sources (except those protected by data usage agreement), code, and results are publicly available online. A comprehensive explanation of inclusion and exclusion criteria and limitations has been previously described elsewhere[9]. The Ethics Committee at the global

Council of Medical Research and the ethics committee of the Public Health Foundation approved the work of this initiative.

#### *Burden of breast cancer estimation*

The GBD study uses the disability-adjusted life-years (DALYs), which is the sum of years of life lost due to premature mortality (YLLs) and years of life-disability (YLDs)[10], as a summary metric of population health loss, reflecting years of healthy life lost due to morbidity and mortality. Prevalence, deaths, and DALYs numbers were reported as absolute numbers and as age-standardized rates with 95% uncertainty intervals. Changes in absolute prevalence, deaths, and DALYs numbers are reported for 2007 and 2017 estimates. Details of the methods of the GBD study have been published elsewhere[11]. Using these data as primary inputs, DisMod-MR 2.1, a Bayesian meta-regression instrument, used a log rate and incidence-prevalence-mortality mathematical model to develop internally consistent epidemiological models. In view that empirical data were unequally distributed between age groups, and regions, DisMod-MR was able to impute age-specific estimates from available data, informed by expert prior information such as age of onset as well as data for comparable populations[7]. Statistical code used for GBD estimation was publicly available online.

#### *Geographical units and time periods*

The GBD is hierarchically organized by geographic units or locations, with 7 super-regions, 21 regions nested within these super-regions, and 195 countries or territories within 21 regions. For the purposes of statistical analyses, we further grouped regions into seven super-regions (central Europe, eastern Europe, and central Asia; high income; Latin America and Caribbean; north Africa and Middle East; south Asia; southeast Asia, east Asia and Oceania; and sub-Saharan Africa)[12]. Subnational estimates for countries with populations larger than 200 million people (measured using our most recent year of published estimates) that have not yet been published elsewhere are presented wherever estimates are illustrated with maps but are not included in data tables.

#### *Statistical Analysis*

Based on age-standardized rates on the GBD global reference population[13], both age-standardized rates and percentage change in age-standardized rates by DALYs were presented, since age-standardized rates allowed comparisons over time and between regions after adjusting for the differences in the age structure of the population. To estimate YLDs, GBD 2017 used a Bayesian metaregression method, DisMod-MR 2.1. It was designed to address statistical challenges in the estimation of nonfatal health outcomes, and for the synthesis of sparse and heterogeneous epidemiological data. The sequence of estimation occurs at five levels: global, super-region, region, country, and, where applicable, subnational locations. At each level of the cascade, the DisMod-MR 2.1 computational engine enforces consistency between all disease parameters. 95% uncertainty intervals (UIs) were calculated on the basis of 1000 draws from the posterior distribution of each step in the estimation process using the 2.5th and 97.5th percentiles of the ordered 1000 values.

## Results

### *Age-standardized DALYs and Percentage change in age-standardized DALYs*

Globally, DALYs of breast cancer had claimed 17.42 billion (95% UI 16.62 to 18.38) cases in 2017, with a 1.35% (95% UI -6.51 to 2.41) percentage reduction in age-standardized DALYs rate, per 100,000 population over the ten years. Of note, breast cancer related-DALYs contributed 1.78 billion (95% UI 1.64 to 1.94) in low SDI regions. While in high SDI regions increased to 4.24 billion (95% UI 4.03 to 4.46) (**Table 1**). The age-standardized DALYs rates were 694.23 in Western Sub-Saharan Africa and 692.47 in Oceania, per 100,000 DALYs. Whereas east Asia (257.54) and high-income Asia Pacific (288.94) remained the lowest in this regard (**Figure 1**).

During 2007-2017, the percentage change in age-standardized DALYs rate was 18.77(2.44 to 29.78) in low SDI regions, while in high-middle and high SDI regions, rates of DALYs decreased by -7.26 (-12.21 to -3.50) and -11.65 (-14.27 to -9.23), respectively (**Table 1**). Besides, rates of DALYs in south Asia increased by 23% (9.0 to 35) per 100,000, whereas a decrease was observed in Southern Sub-Saharan Africa by 21% (-30 to -12) (**Figure 1**).

We noticed geographical variations in the highest and lowest DALYs (**Figure 2 and Supplementary Table 1**). Breast cancer burden was the highest in the Bahamas (1003.72), Pakistan (979.29), Tonga (925.72), and Nigeria (910.61) in 2017, as shown in **Figure 3**. During 2007-2017, the five leading countries with the largest increased fluctuations in terms of age-standardized DALYs rate were Grenada [+32.93% (16.65 to 50.09)], American Samoa [+22.89% (2.54 to 44.67)], and Jamaica [20.24% (-5.75 to 50.89)] (**Figure 3 and Supplementary Table 1**).

Almost half the breast cancer-related DALYs occurred in people aged 50–54 years in low SDI countries. However, women aged 25-29 years in high SDI and high-middle SDI regions contributed greatly of all-age DALYs change (**Figure 4**).

### *Risk factors for DALYs of breast cancer*

Globally, high fasting plasma glucose and high BMI increased to be the leading causes of breast cancer during 2007-2017 (**Table 3 and Figure 5**). Of note, low physical activity contributed greater in low-income and low middle-income countries.

## Discussion

On a global scale, about 6.52 million female were diagnosed with breast cancer with 5.21% increment from 2007, among them 17.42 million DALYs cases (decreased 1.35% from 2007) in 2017. The trends for global breast cancers burdens differed among the SDI quintiles. Rising trends in DALYs has been consistently found in low SDI regions between 2007 and 2017, but declining trends for DALYs indicators were observed in high SDI regions. When considered about risk factors, high fasting plasma glucose and high BMI are concerned to become the great contributors of breast cancer by attributable DALYs around the world.

On the contrary, previous study indicated that 59% of breast cancer cases occurred in developed countries (north of America, Europe, Australia, New Zealand and Japan) in 1990[14]. The prevalence rates were the highest in developed countries led by the Netherlands and Belgium

in 2016[3]. In 2017, Netherlands still had the highest age-standardized prevalence rates. Though the prevalence rate was relatively high in developed countries, the age-standardized prevalence rate decreased significantly. In several developed countries, including the United States, Canada, the United Kingdom, France, and Australia, the fall in prevalence in 2000s was partly attributable to declines in the use of postmenopausal hormonal treatment after publication of the Women's Health Initiative trial linking postmenopausal hormone use to increased breast cancer risk[15].

A worrying pattern was also presented in terms of different age, the odds of developing breast cancer were the highest in high SDI countries, this dramatic increase of breast cancer cases in young women is very important because the behavior of these tumors is in the majority of cases more aggressive in comparison with older women[16, 17]. Routine annual screening has been suggested to begin at 40 years of age, but only further research will establish whether this measure will be beneficial[18].

For breast cancer, the interplay of the risk factors to which the highest proportion of DALYs globally could be attributed, high fasting plasma glucose and high BMI. Elevated DALYs rate in high and middle SDI regions are both attributed to anthropometry (body fat distribution, and plasma glucose). These findings are generally consistent with previous study[19, 20], that obesity is associated with poor survival in of breast cancer[21]. We have found some slow progress in reducing tobacco consumption, but, no progress in lowering fasting plasma glucose and BMI, which has increased since 1990.

Our GBD study has several strengths. First, we employed data available from the Global Burden of Disease (GBD) study, which draws strength from data availability from cancer registries. Second, compared with the GBD 2016 of breast cancer[3], We have made substantial improvements in the estimation of life expectancy in GBD 2017 across our publication, including an independent estimation of population, a comprehensive update on fertility, adding a substantial amount of new data (from censuses, Demographic Surveillance Sites, and other sources), improvements to the GBD model life-table system, and enhancements to the modelling framework[22]. We calculated DALYs in the part of GBD 2017, which reflected years of healthy life lost for cancer better than the deaths rates[23]. Besides, we conducted the GBD study based on 195 countries within 21 regions to expand demographic units for the global burden of breast cancer. What's more, only a good understanding of the distribution of risk factors can we better formulate the corresponding preventive measures for the specific countries.

Our GBD study has several limitations. For this study, inclusion of these and other risk factors might have resulted in an even greater proportion of breast cancer burden attributable to risk factors, because the missing factors are known to have a role in breast cancer. To address the knowledge gap in GBD, the next step would be to include previous health conditions by age, and cancer subtypes in analyses, in addition to at least some of the broader causes. We also aim to update such crucial evidence for breast cancer prevention at all levels every 2 years, including geographical regions, time periods, and further risk factors.

Despite these acknowledged and important data limitations, our study is crucial to quantify the global burden of breast cancer in 195 countries. We believe that our study will be of particular interest to health care program. As high fasting plasma glucose, high BMI, and low physical activity are important part of breast cancer's etiology, it may be particularly suited to population-based interventions in order to improve the public self-discipline. In addition, future research needs to investigate the drivers of the observed heterogeneity in the epidemiological and

demographic transitions.

### **Role of the funding source**

The funders of the study had no role in the study design, data collection, data analysis, data interpretation, or writing of this paper. All authors had full access to all of the data in the study and had final responsibility for the decision to submit for publication.

### **Reference**

1. Gabriel N. Hortobagyi, Jaime de la Garza Salazar, Kathleen Pritchard, Dino Amadori, Renate Haidinger, Clifford A. Hudis *et al*: **The Global Breast Cancer Burden: Variations in Epidemiology and Survival**. *Clinical Breast Cancer* 2005, **6**(5):391-401.
2. Woolston C.: **Breast cancer**. *Nature* 2015, **527(7578)**:S101. .
3. R. Sharma: **Breast cancer incidence, mortality and mortality-to-incidence ratio (MIR) are associated with human development, 1990-2016: evidence from Global Burden of Disease Study 2016**. *Breast Cancer* 2019, **26**(4):428-445.
4. Valery L. Feigin, Gregory A. Roth, Mohsen Naghavi, Priya Parmar, Rita Krishnamurthi, Sumeet Chugh *et al*: **Global burden of stroke and risk factors in 188 countries, during 1990–2013: a systematic analysis for the Global Burden of Disease Study 2013**. *The Lancet Neurology* 2016, **15**(9):913-924.
5. F. Sassi: **Calculating QALYs, comparing QALY and DALY calculations**. *Health Policy Plan* 2006, **21**(5):402-408.
6. Hanson K. Fox-Rushby JA: **Calculating and presenting disability adjusted life years (DALYs) in cost-effectiveness analysis**. *Health Policy Plan* 2001, **16**((3)):326-331.
7. GBD 2017 Disease and Injury Incidence and Prevalence Collaborators: **Global, regional, and national incidence, prevalence, and years lived with disability for 354 diseases and injuries for 195 countries and territories, 1990-2017: a systematic analysis for the Global Burden of Disease Study 2017**. *Lancet (London, England)* 2018, **392**(10159):1789-1858.
8. Gretchen A. Stevens, Leontine Alkema, Robert E. Black, J. Ties Boerma, Gary S. Collins, Majid Ezzati *et al*: **[Guidelines for Accurate and Transparent Health Estimates Reporting: the GATHER Statement]**. *Epidemiologia e Serviços de Saúde* 2017, **26**(01):215-222.
9. Christopher J. L. Murray, Majid Ezzati, Abraham D. Flaxman, Stephen Lim, Rafael Lozano, Catherine Michaud *et al*: **GBD 2010: design, definitions, and metrics**. *The Lancet* 2012, **380**(9859):2063-2066.
10. Fiona J. Charlson, Amanda J. Baxter, Hui G. Cheng, Rahul Shidhaye, Harvey A. Whiteford: **The burden of mental, neurological, and substance use disorders in China and India: a systematic analysis of community representative epidemiological studies**. *The Lancet* 2016, **388**(10042):376-389.
11. Degenhardt L Whiteford HA, Rehm J, et al.: **Global burden of disease attributable to mental and substance use disorders: findings from the Global Burden of Disease Study 2010**. *Lancet* 2013, **382**(9904):1575-1586. .
12. GBD 2017 Disease and Injury Incidence and Prevalence Collaborators.: **Global, regional, and national incidence, prevalence, and years lived with disability for 354 diseases and injuries**

- for 195 countries and territories, 1990-2017: a systematic analysis for the Global Burden of Disease Study 2017. *Lancet* 2018, **392(10159)**:1789-1858.
13. Fitzmaurice C, Akinyemiju TF, Al Lami FH, Alam T, Alizadeh-Navaei R, Allen C *et al*: **Global, Regional, and National Cancer Incidence, Mortality, Years of Life Lost, Years Lived With Disability, and Disability-Adjusted Life-Years for 29 Cancer Groups, 1990 to 2016: A Systematic Analysis for the Global Burden of Disease Study.** *JAMA oncology* 2018, **4(11)**:1553-1568.
  14. M. Ghoncheh, Z. Momenimovahed, H. Salehiniya: **Epidemiology, Incidence and Mortality of Breast Cancer in Asia.** *Asian Pac J Cancer Prev* 2016, **17(S3)**:47-52.
  15. Anderson GL Rossouw JE, Prentice RL, *et al.*: **Risks and benefits of estrogen plus progestin in healthy postmenopausal women: principal results from the Women's Health Initiative randomized controlled trial.** *JAMA* 2002, **288**:321-333.
  16. Lee HB, Han W: **Unique features of young age breast cancer and its management.** *Journal of breast cancer* 2014, **17(4)**:301-307.
  17. Anastasiadi Z, Lianos GD, Ignatiadou E, Harissis HV, Mitsis M: **Breast cancer in young women: an overview.** *Updates in surgery* 2017, **69(3)**:313-317.
  18. Xu B, Hu X, Jiang Z, Li H, Chen J, Cui S *et al*: **National consensus in China on diagnosis and treatment of patients with advanced breast cancer.** *Annals of translational medicine* 2015, **3(17)**:242.
  19. Iyengar NM, Arthur R, Manson JE, Chlebowski RT, Kroenke CH, Peterson L *et al*: **Association of Body Fat and Risk of Breast Cancer in Postmenopausal Women With Normal Body Mass Index: A Secondary Analysis of a Randomized Clinical Trial and Observational Study.** *JAMA oncology* 2019, **5(2)**:155-163.
  20. Swisher AK, Abraham J, Bonner D, Gilleland D, Hobbs G, Kurian S *et al*: **Exercise and dietary advice intervention for survivors of triple-negative breast cancer: effects on body fat, physical function, quality of life, and adipokine profile.** *Supportive care in cancer : official journal of the Multinational Association of Supportive Care in Cancer* 2015, **23(10)**:2995-3003.
  21. Rasha F, Ramalingam L, Gollahon L, Rahman RL, Rahman SM, Menikdiwela K *et al*: **Mechanisms linking the renin-angiotensin system, obesity, and breast cancer.** *Endocrine-related cancer* 2019, **26(12)**:R653-R672.
  22. GBD 2017 Mortality Collaborators.: **Global, regional, and national age-sex-specific mortality and life expectancy, 1950-2017: a systematic analysis for the Global Burden of Disease Study 2017.** *Lancet* 2018, **392(10159)**:1684-1735. .
  23. S. Morampudi, N. Das, A. Gowda, A. Patil: **Estimation of lung cancer burden in Australia, the Philippines, and Singapore: an evaluation of disability adjusted life years.** *Cancer Biol Med* 2017, **14(1)**:74-82.



**Table 1: DALYs per 100 000 population in 2007 and 2017, percentage change and percentage change in age-standardized rates for breast cancer during 2007–2017 by regions.**

	DALYs (thousands)2007	DALYs (thousands)2017	Percentage change in DALYs, 2007-17, %	Percentage change in age- standardised DALYs rate, 2007-17, %
Global	14009036.11(13517776.40 to 14720046.06)	17423142.58(16617464.4 8 to 18378224.54)	24.37(17.82 to 29.13)	-1.35(-6.51 to 2.41)
SDI regions				
Low SDI	1105409.44(997357.00 to 1312125.04)	1782078.02(1642598.29 to 1943777.88)	61.21(39.24 to 76.32)	18.77(2.44 to 29.78)
Low-middle SDI	2499115.06(2261723.54 to 3005633.03)	3520753.30(3130986.56 to 4409287.42)	40.88(23.99 to 58.38)	6.49(-6.08 to 19.01)
Middle SDI	3290574.46	4637688.05	36.65(26.63 to 45.24)	5.23(-2.45 to 11.76)
High-middle SDI	3027859.01(2910350.09 to 3126200.22)	3478137.16(3203078.71 to 3663586.69)	14.87(8.79 to 19.57)	-7.26(-12.21 to -3.50)
High SDI	4151907.05(4007248.84 to 4333700.40)	4238386.23(4030900.21 to 4460007.70)	2.08(-0.84 to 4.83)	-11.65(-14.27 to -9.23)
World regions				
High-income North America	1276164.05(1225656.31 to 1338459.80)	1390748.84(1316999.80 to 1473568.56)	8.98(4.91 to 13.19)	-7.89(-11.60 to -4.13)
Southern Latin America	198138.80(192184.70 to 204641.95)	217566.49(193204.54 to 246424.20)	9.81(-2.52 to 24.16)	-9.19(-19.49 to 2.93)
Western Europe	1987317.95(1919594.30 to 2067832.92)	1909718.72(1788436.24 to 2025117.02)	-3.90(-8.35 to 0.66)	-14.45(-18.43 to -10.29)
Australasia	93026.22(89073.87 to 97785.99)	103825.09(90974.57 to 117310.02)	11.61(-1.52 to 25.18)	-9.07(-19.92 to 2.33)
Central Europe	496110.13(483115.80 to 509546.59)	481691.06(459305.53 to 506172.82)	-2.91(-6.89 to 1.28)	-9.93(-13.83 to -5.97)
High-income Asia Pacific	460286.43(442676.17 to 482096.62)	470843.23(441004.57 to 501092.12)	2.29(-2.51 to 6.98)	-10.02(-14.35 to -5.66)
Eastern Europe	977333.21(956564.90 to 999572.48)	866214.98(834927.24 to 899836.95)	-11.37(-14.01 to -8.62)	-15.60(-18.22 to -12.87)
Caribbean	111359.68(100080.21 to 126454.94)	143012.53(122890.15 to 166456.88)	28.42(17.83 to 40.02)	5.83(-2.84 to 15.48)
South Asia	2066990.88(1896073.21 to 2535098.82)	3432683.45(2941452.80 to 4164190.55)	66.07(46.67 to 81.34)	23.34(9.10 to 34.54)
Central Latin America	332083.45(324003.13 to 341936.81)	470478.02(445493.36 to 496143.35)	41.67(34.84 to 48.85)	3.75(-1.23 to 8.93)
Andean Latin America	72379.83(66733.61 to 81405.93)	94683.30(82634.17 to 109651.43)	30.81(13.83 to 50.97)	-2.88(-15.47 to 12.09)
Southern Sub-Saharan	160603.97(145795.02 to	157518.11(144145.08 to	-1.92(-14.14 to 9.97)	-20.56(-29.86 to -11.80)

medRxiv preprint doi: <https://doi.org/10.1101/2020.04.02.20050534>; this version posted April 6, 2020. The copyright holder for this preprint (which was not certified by peer review) is the author/funder, who has granted medRxiv a license to display the preprint in perpetuity. It is made available under a [CC-BY-NC-ND 4.0 International license](https://creativecommons.org/licenses/by-nc-nd/4.0/).

Africa	175782.03)	170964.68)		
Central Asia	164338.19(158818.39 to 169897.88)	196393.89(183614.76 to 210933.63)	19.51(11.15 to 28.51)	-6.05(-12.54 to 0.65)
Tropical Latin America	454204.64(444114.11 to 465233.87)	557150.08(539686.55 to 574934.57)	22.66(18.88 to 26.31)	-7.35(-10.17 to -4.62)
Central Sub-Saharan Africa	106464.92(73767.42 to 161435.27)	165331.62(123344.30 to 218997.90)	55.29(22.39 to 88.96)	11.35(-12.03 to 34.32)
Southeast Asia	1385548.81(1254782.40 to 1514718.12)	1684759.02(1553411.22 to 1823089.81)	21.60(8.58 to 36.16)	-4.85(-14.65 to 6.07)
North Africa and Middle East	740797.89(653552.78 to 840461.81)	958621.32(889519.11 to 1059682.73)	29.40(17.36 to 49.62)	-8.28(-16.68 to 5.57)
East Asia	2029230.90(1940192.11 to 2159262.88)	2744523.04(2347940.08 to 2966188.95)	35.25(18.53 to 45.53)	6.54(-6.49 to 14.36)
Western Sub-Saharan Africa	541366.39(401382.84 to 719257.07)	841438.72(643410.85 to 1099587.60)	55.43(27.90 to 91.45)	7.49(-10.90 to 32.60)
Oceania	21879.97(15709.13 to 32724.50)	30751.87(22373.74 to 43890.67)	40.55(19.75 to 66.90)	2.90(-11.14 to 18.71)
Eastern Sub-Saharan Africa	333409.78(301739.76 to 381909.40)	505189.19(439276.25 to 586265.81)	51.52(24.62 to 74.88)	5.97(-12.43 to 21.54)

Note:  
DALYs=disability-adjusted life-years.

medRxiv preprint doi: <https://doi.org/10.1101/2020.04.02.20050534>; this version posted April 6, 2020. The copyright holder for this preprint (which was not certified by peer review) is the author/funder, who has granted medRxiv a license to display the preprint in perpetuity. It is made available under a [CC-BY-NC-ND 4.0 International license](https://creativecommons.org/licenses/by-nc-nd/4.0/).

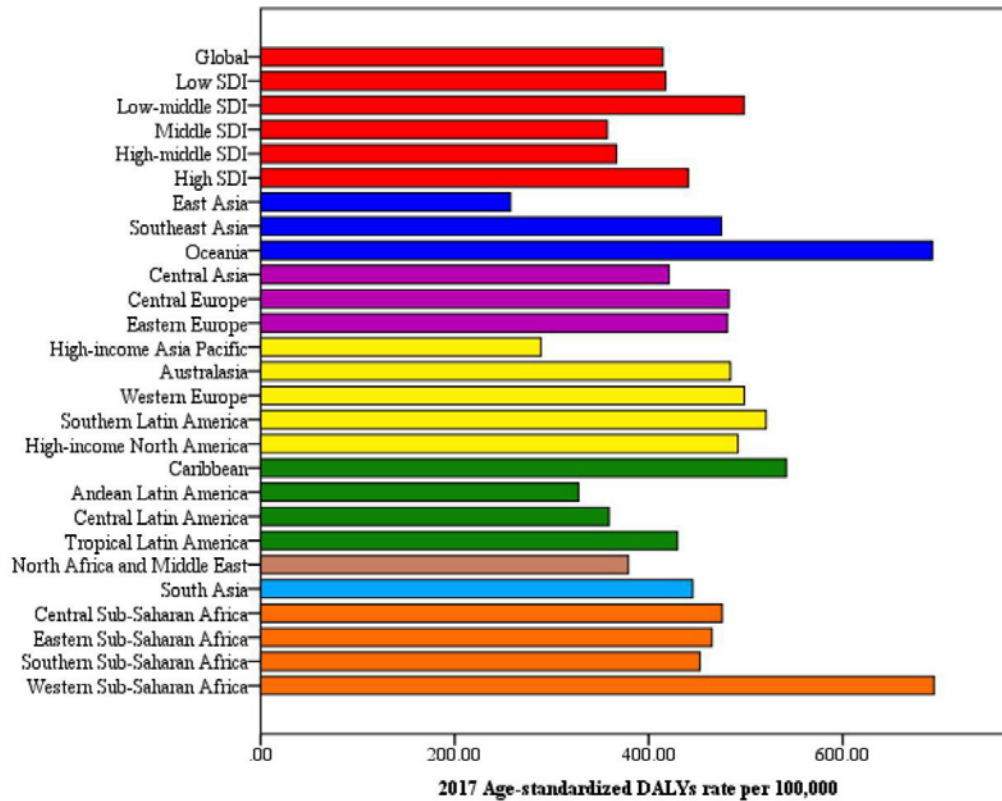
**Table 3: Global all-age attributable DALYs, 2007–17, and percentage change of DALYs and age-standardised and DALY rates and death rates, 2007–17, for all risk-outcome pairs.**

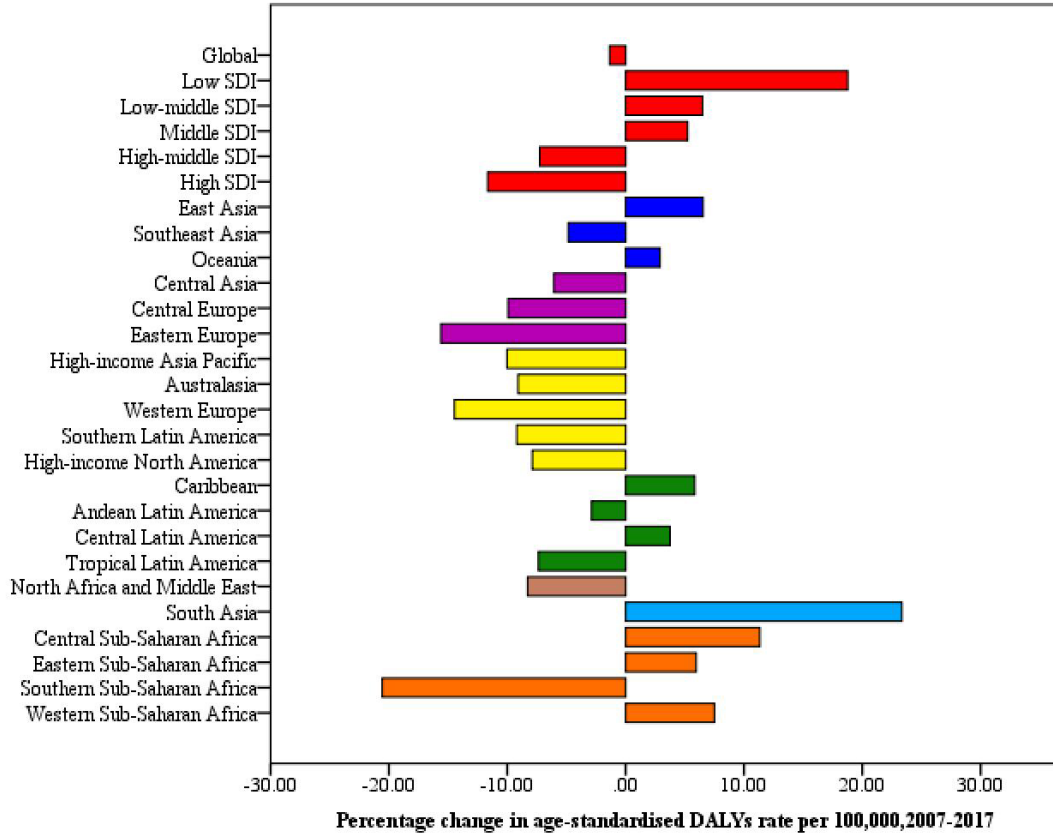
<b>Risks</b>	<b>2007 DALYs (thousands)</b>	<b>2017 DALYs (thousands)</b>	<b>Percentage change in DALYs, 2007-17</b>	<b>Percentage change in age-DALYs rate, 2007-17</b>
All risk factors	3443685.89(2637221.05 to 4441098.25)	4172656.19(3103429.25 to 5513626.45)	21.17(14.45 to 27.30)	-6.54(-11.53 to -1.87)
<b>Behavioral risks</b>	2414185.00(2010010.72 to 2847534.80)	2637182.11(2147168.10 to 3172056.02)	9.24(4.81 to 13.36)	-14.13(-17.66 to -10.83)
Tobacco	837900.55(516840.80 to 1141694.21)	915772.62(539261.74 to 1273442.23)	9.29(2.91 to 14.48)	-14.20(-19.99 to -9.87)
Smoking	447118.96(317235.10 to 582189.40)	450780.37(319551.66 to 593405.09)	0.82(-2.48 to 3.83)	-22.31(-25.16 to -19.78)
Second-hand smoke	400533.12(282147.96 to 682313.28)	474077.44(117261.56 to 821917.93)	18.36(11.44 to 24.45)	-5.25(-10.76 to -0.43)
Alcohol use	1517121.29(1280946.30 to 1743737.28)	1611114.97(1338884.95 to 1874533.94)	6.20(1.16 to 10.75)	-16.52(-20.60 to -12.92)
Low physical activity	205104.86(3740.48 to 470347.39)	253064.61(4762.20 to 575023.64)	23.38(17.73 to 28.47)	-3.10(-7.47 to 1.35)
<b>Metabolic risks</b>	1241372.95(461565.52 to 2341260.39)	1812074.02(744744.40 to 3317952.53)	45.97(34.22 to 70.21)	8.12(0.47 to 22.65)
High fasting plasma glucose	804924.71(153454.33 to 1797684.94)	1074922.12(204986.51 to 2425110.58)	33.54(25.40 to 42.39)	3.06(-3.03 to 9.88)
High body-mass index	486826.90(124933.97 to 982687.41)	816609.44(267343.27 to 1529345.97)	67.74(45.48 to 153.10)	16.68(1.36 to 56.00)

Note: DALYs=disability-adjusted life-years.

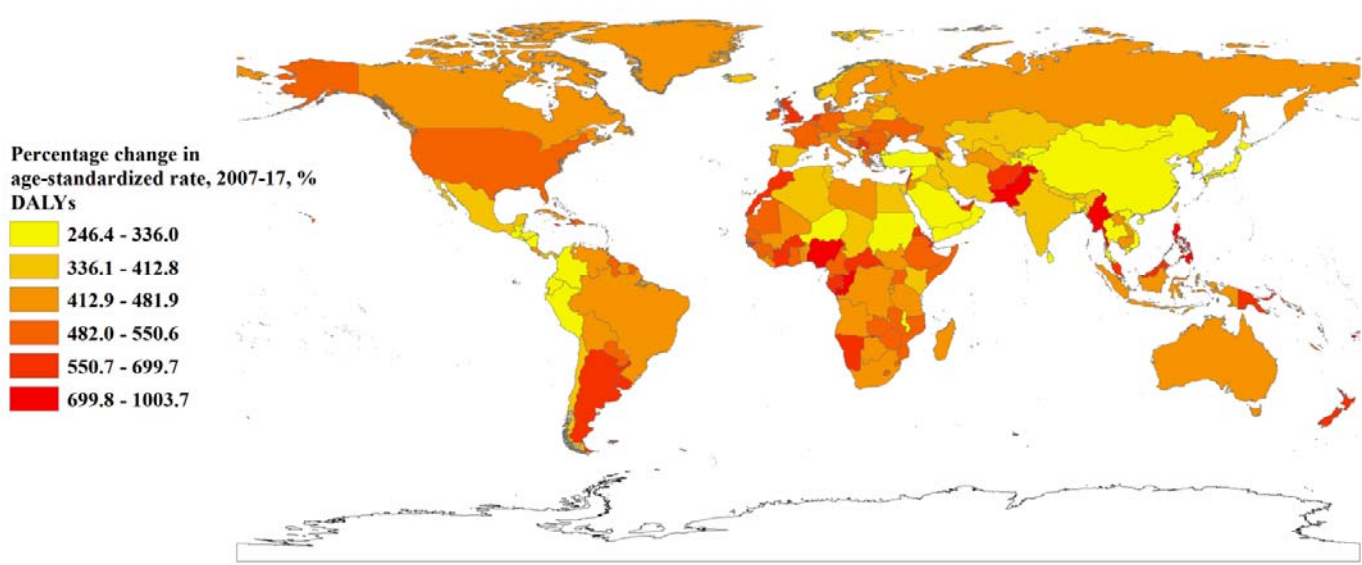
medRxiv preprint doi: <https://doi.org/10.1101/2020.04.02.20050534>; this version posted April 6, 2020. The copyright holder for this preprint (which was not certified by peer review) is the author/funder, who has granted medRxiv a license to display the preprint in perpetuity. It is made available under a [CC-BY-NC-ND 4.0 International license](https://creativecommons.org/licenses/by-nc-nd/4.0/).

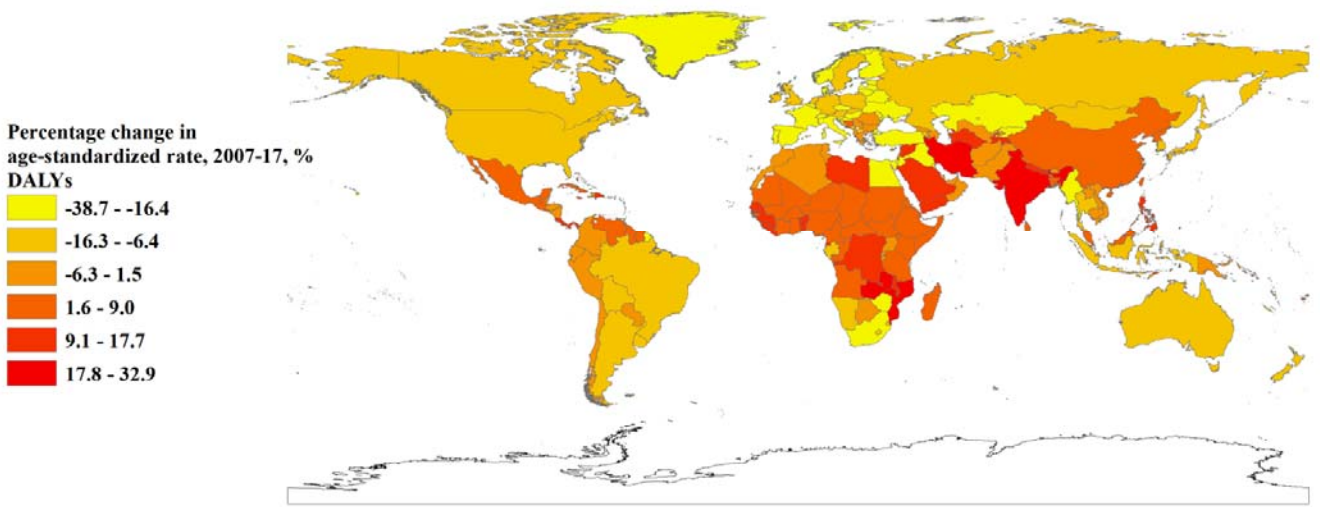
Figure 1: Age-standardized DALYS rate in 2017 and percentage change in DALYS age-standardized rate by SDI and world regions, 2007–17. DALYs=disability-adjusted life-years.





**Figure 2: Age-standardized rate in 2017 and percentage change in age-standardized rate by location, 2007–17. Age-standardized rate changes due to DALYs, Percentage change in age-standardised rate changes in DALYs. DALYs=disability-adjusted life-years. FSM=Federated States of Micronesia. Isl=Islands. LCA=Saint Lucia. TLS=Timor-Leste. TTO=Trinidad and Tobago. VCT=Saint Vincent and the Grenadines.**

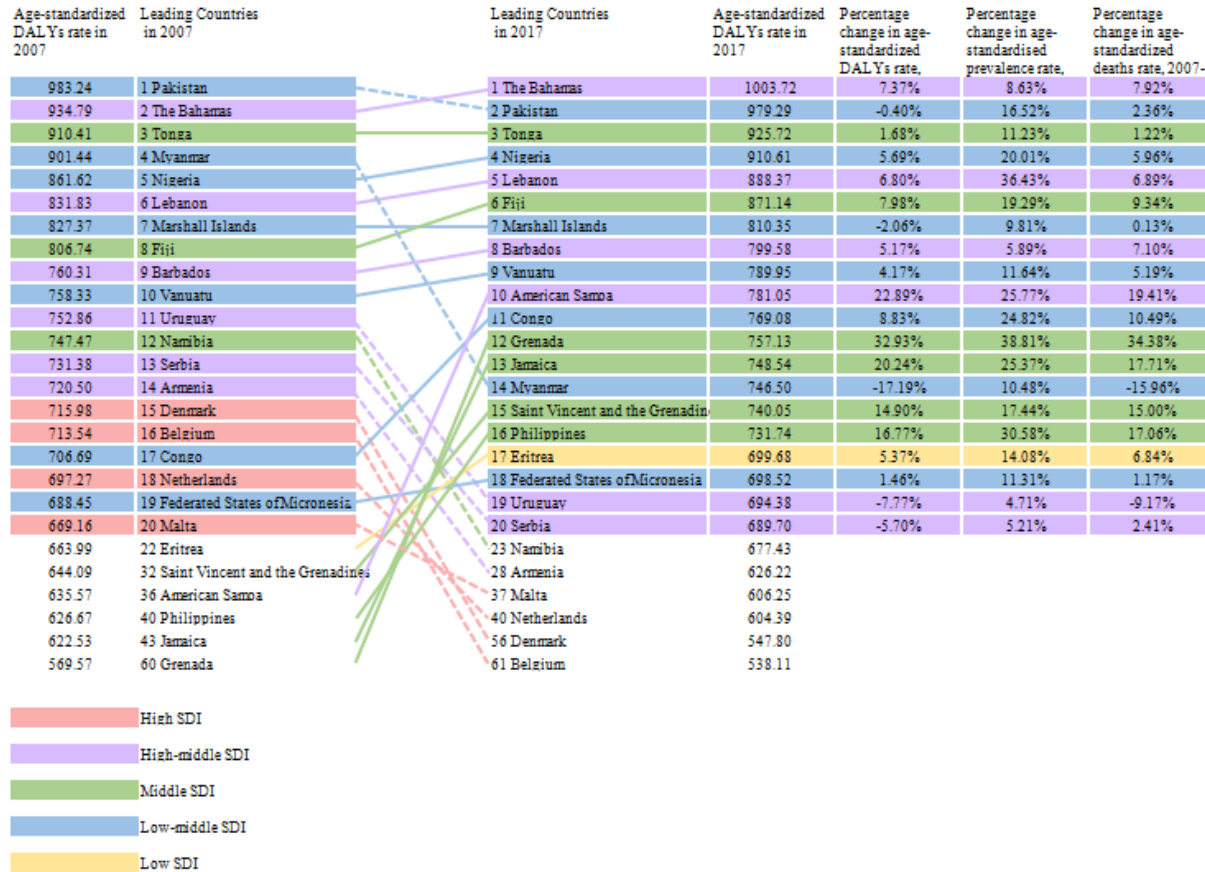




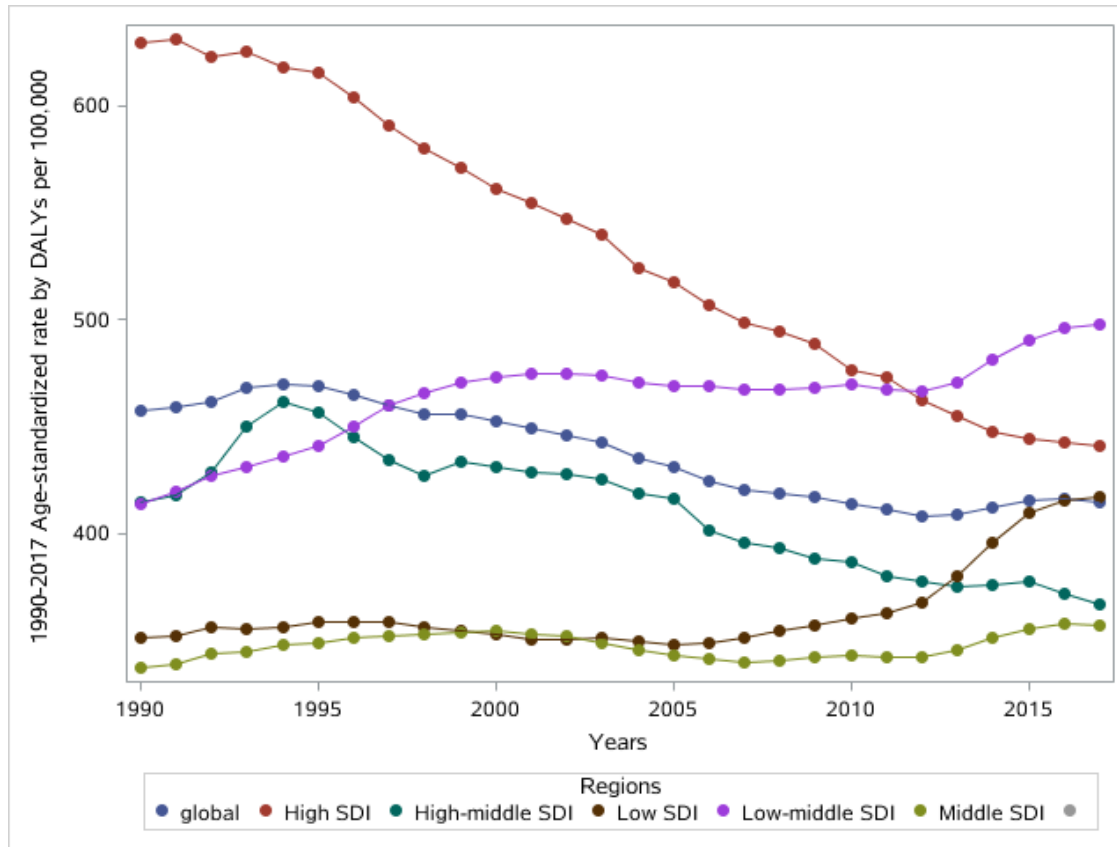




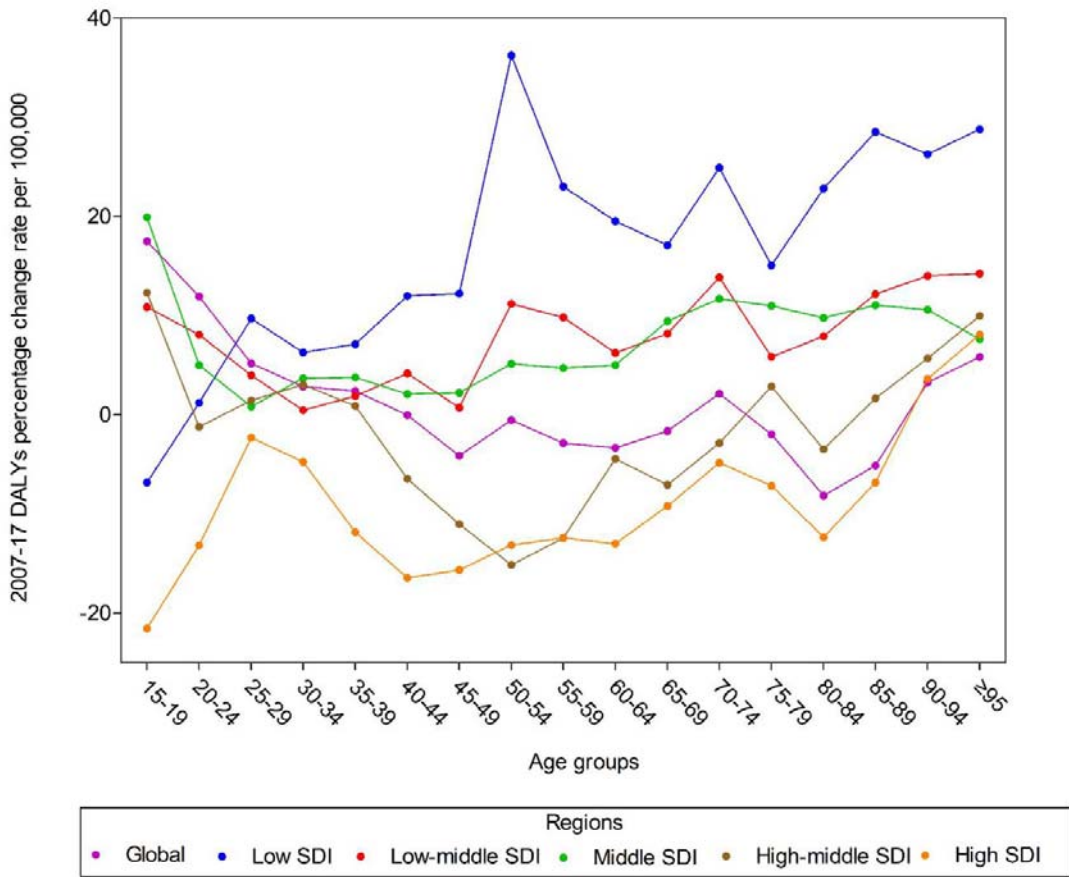
**Figure 3: The percentage change in age-standardized DALYs rate, 2007-17 of the top 20 countries with the highest age-standardized rate by DALYs in 2007 and 2017.**



**Figure 4: Age-standardized rate by DALYs between 1990 and 2017 at the global level by SDI regions. Percentage change in DALYs rate at the global level by SDI regions, 2007–17 across different age groups between 15 to over 95 years old.**







**Figure 5: Leading risk factors of breast cancer by attributable DALYs at the global level (A), in middle SDI region (B) and high SDI region (C) in 1990, 2007, and 2017 for females. Risks are connected by lines between time periods; solid lines are increases and dashed lines are decreases. Statistically significant increases or decreases are shown in bold ( $P < 0.05$ ). DALYs=disability-adjusted life-years.**

Global						
Leading risks 1990	Leading risks 2007	Percentage change in number of DALYs, 1990-2007	Percentage change in age-standardised DALYs rate, 1990-2007	Leading risks 2017	Percentage change in number of DALYs, 2007-2017	Percentage change in age-standardised DALYs rate, 2007-2017
1 Alcohol use	1 Alcohol use	-6.55%	-20.70%	1 Alcohol use	6.20%	-16.52%
2 Tobacco	2 Tobacco	-11.21%	-24.56%	2 High fasting plasma glucose	33.54%	3.06%
3 High fasting plasma glucose	3 High fasting plasma glucose	26.12%	6.96%	3 Tobacco	9.29%	-14.20%
4 High body-mass index	4 High body-mass index	52.90%	33.75%	4 High body-mass index	67.74%	16.68%
5 Smoking	5 Smoking	-20.11%	-31.88%	5 Secondhand smoke	18.36%	-5.25%
6 Secondhand smoke	6 Secondhand smoke	0.82%	-14.50%	6 Smoking	0.82%	-22.31%
7 Low physical activity	7 Low physical activity	6.03%	-9.92%	7 Low physical activity	23.38%	-3.10%

High SDI						
Leading risks 1990	Leading risks 2007	Percentage change in number of DALYs, 1990-2007	Percentage change in age-standardised DALYs rate, 1990-2007	Leading risks 2017	Percentage change in number of DALYs, 2007-2017	Percentage change in age-standardised DALYs rate, 2007-2017
1 Alcohol use	1 Alcohol use	-12.40%	-24.97%	1 Alcohol use	31.95%	-15.87%
2 Tobacco	2 Tobacco	-24.54%	-35.79%	2 Tobacco	23.40%	-20.85%
3 Smoking	3 Smoking	-25.27%	-36.51%	3 High fasting plasma glucose	49.60%	-1.62%
4 High fasting plasma glucose	4 High fasting plasma glucose	5.39%	-10.75%	4 Smoking	11.85%	-21.36%
5 High body-mass index	5 High body-mass index	26.40%	7.27%	5 High body-mass index	101.34%	1.87%
6 Secondhand smoke	6 Secondhand smoke	-22.76%	-34.04%	6 Low physical activity	40.80%	-11.61%
7 Low physical activity	7 Low physical activity	-6.20%	-20.19%	7 Secondhand smoke	27.73%	-19.65%

Middle SDI

Leading risks 1990	Leading risks 2007	Percentage change in number of DALYs, 1990-2007	Percentage change in age-standardised DALYs rate, 1990-2007	Leading risks 2017	Percentage change in number of DALYs, 2007-2017	Percentage change in age-standardised DALYs rate, 2007-2017
1 Tobacco	1 High fasting plasma glucose	65.11%	23.11%	1 High body-mass index	101.34%	31.56%
2 High fasting plasma glucose	2 Alcohol use	57.61%	18.44%	2 High fasting plasma glucose	49.60%	10.20%
3 Alcohol use	3 Tobacco	25.25%	-5.78%	3 Alcohol use	31.95%	1.62%
4 Secondhand smoke	4 High body-mass index	141.13%	75.44%	4 Tobacco	23.40%	-5.69%
5 High body-mass index	5 Secondhand smoke	17.62%	-11.70%	5 Secondhand smoke	27.73%	-0.91%
6 Smoking	6 Smoking	50.02%	12.04%	6 Low physical activity	40.80%	6.76%
7 Low physical activity	7 Low physical activity	36.82%	2.91%	7 Smoking	11.85%	-17.49%