

1 **Should women have lower blood pressure targets**  
2 **than men? Sex differences in blood pressure and**  
3 **cardiovascular disease in the UK Biobank**

4

5 Rebecca K Kelly<sup>1,2</sup>, MD, PhD, Katie Harris<sup>1</sup>, PhD, Cheryl Carcel<sup>1,3</sup>, MD, PhD, Paul  
6 Muntner, PhD<sup>1</sup>, Mark Woodward<sup>1,5</sup>, PhD

7

8 1. The George Institute for Global Health, University of New South Wales, Sydney,  
9 New South Wales, Australia

10 2. School of Medicine, College of Health and Medicine, University of Tasmania,  
11 Hobart, Tasmania, Australia

12 3. Department of Neurology, Royal Prince Alfred Hospital, Sydney, New South  
13 Wales, Australia

14 4. Department of Epidemiology, University of Alabama at Birmingham, Birmingham,  
15 AL, USA

16 5. The George Institute for Global Health, Imperial College London, London, United  
17 Kingdom

18

19 **Short title:** Should women have lower blood pressure targets?

20

21 **Corresponding author:** Dr Rebecca K Kelly, The George Institute for Global Health,  
22 Three International Towers, Level 18/300 Barangaroo Avenue, Barangaroo NSW

**NOTE:** This preprint reports new research that has not been certified by peer review and should not be used to guide clinical practice.

23 2000, Australia. Telephone: +61 2 8052 4300. Fax: +61 2 8052 4301. E-mail:

24 [RKelly@georgeinstitute.org.au](mailto:RKelly@georgeinstitute.org.au).

25

26 **Total word count:** 6,434 (including Title Page, Abstract, Text, References, Tables

27 and Figures Legends)

## 28 **Abstract**

29 **Background:** Recent studies show that the risk of cardiovascular disease (CVD)  
30 increases from a lower nadir of systolic blood pressure (SBP) in women than men,  
31 and increases thereafter at a greater rate. This has led to a suggestion that sex-based  
32 SBP thresholds are required. We aimed to investigate sex differences in the  
33 associations of SBP and incident atherosclerotic CVD in a large prospective cohort.

34 **Methods:** 420,649 UK Biobank participants with no prior history of CVD were  
35 included. Age-adjusted sex-specific risks, relative risks (RRs) and risk differences  
36 (RDs) relating SBP to CVD were estimated using Poisson and Cox regression.

37 **Results:** Over 13.2 years of follow-up there were 28,628 CVD events. CVD risks  
38 across BP levels showed a “J-shape”, and were higher in men than women at all BP  
39 levels. The lowest risks were at SBP 100-<105 mmHg (events per 10,000 person-  
40 years [95%CI]: 15.6 [11.8-23.1]) and 110-<115 (47.2 [41.8-53.0]) among women and  
41 men, respectively. Compared with SBP 100-<110, sex-specific RRs at above 120  
42 were higher in women than men, but RDs were higher in men than women at all levels  
43 of SBP. Furthermore, compared to men at 100-<110 (i.e. the men with least risk), risks  
44 in women were lower at all levels of SBP below 170.

45 **Conclusions** CVD risk is lowest for women at a slightly lower SBP than men and RRs  
46 for CVD increase with SBP at a slightly steeper rate in women. However, both risks  
47 and RDs in women are never greater than in men. This evidence suggests that women  
48 should not have lower BP thresholds.

49 **Keywords:** sex differences, hypertension, coronary heart disease, stroke

## 50 **Clinical Perspective**

### 51 **What is New?**

- 52 • While risks are higher at lower BP levels in women than men when both sexes  
53 are considered independently, consideration of the risks and sex-combined  
54 analyses do not support treating women at lower BP levels than men.

### 55 **What are the Clinical Implications?**

- 56 • In line with 2017 ACC/AHA guideline, antihypertensive treatment thresholds  
57 should be based on absolute risk calculated from sex-specific algorithms, rather  
58 than BP level in isolation.
- 59 • Both risks and relative risks must be taken into account to understand sex-  
60 differences in the relationship of BP-CVD and whether these differences are  
61 clinically meaningful.

## 62 **Non-standard Abbreviations and Acronyms**

63 ACC = American College of Cardiology

64 AHA = American Heart Association

65 LRT = likelihood ratio test

66 NHANES = National Health and Nutrition Examination Survey

67 OPCS = Operating Procedure Codes Supplement

68 RD = risk difference

## 69 Introduction

70 Hypertension guidelines do not currently provide sex-based recommendations for  
71 initiating blood pressure (BP)-lowering therapy, citing limited evidence.<sup>1-3</sup> However, a  
72 recent scientific statement from the European Society of Cardiology acknowledges  
73 that sex-specific thresholds for hypertension may be reasonable because the risk for  
74 cardiovascular disease (CVD) associated with higher BP starts at lower levels in  
75 women than men.<sup>3</sup>

76 Several observational studies have found that the relationship between BP and CVD  
77 differs by sex.<sup>4-8</sup> These studies found higher relative risks (RRs) of CVD, compared to  
78 a low BP reference level, for women than men, as well as a lower nadir in the “J-  
79 shaped” association between BP and CVD in women than men.<sup>4,8</sup> This has raised the  
80 question as to whether women should routinely be treated with antihypertensive  
81 medication at lower BP levels than men.<sup>3,9</sup> However, none of these studies has  
82 reported this in the context of sex-specific risk differences (RDs), rather than RRs, or  
83 compared the RRs for women and men against a common reference group. In  
84 addition, several previous meta-analyses, have not found substantial sex difference in  
85 RRs for the relationship of BP with CVD events,<sup>10-12</sup> or in the efficacy of BP lowering  
86 treatments.<sup>13</sup>

87 To address these uncertainties, we sought to use data from a large cohort of data,  
88 with more CVD events than has been previously analyzed, enabling precise measures  
89 within smaller ranges of BP than have previously been used. Furthermore, we

90 examine whether the sex-differential association between BP and CVD differs by age,  
91 and the effect menopause has on the BP-CVD relationship in women.<sup>14</sup>

## 92 **Methods**

### 93 **Subjects and study design**

94 The UK Biobank is a prospective cohort study that includes approximately 500,000  
95 men and women recruited between 2006 and 2010.<sup>15,16</sup> Eligible adults aged between  
96 40-69 years were invited to visit one of 22 centers for the baseline assessment, where  
97 detailed information on lifestyle and medical history was collected via a Touchscreen  
98 questionnaire and face-to-face interview, and physical measurements and biological  
99 samples were collected. Participants have been followed up for various health-related  
100 outcomes via linking to electronic health records. Further details, including the study  
101 protocol and data access permissions, are available online, and recruitment methods  
102 are described in detail elsewhere.<sup>16</sup> All individuals provided informed written consent  
103 to participate and the study was approved by the National Information Governance  
104 Board for Health and Social care and the National Health Service North West  
105 Multicentre Research Ethics Committee (reference number 21/NW/0157). Bona fide  
106 researchers can apply to use the UK Biobank dataset by registering and applying at  
107 <http://ukbiobank.ac.uk/register-apply/>.

108 Participants were excluded from the present study if they withdrew consent (n=961),  
109 or had a history of CVD (self-reported or via linked electronic health records) prior to  
110 the baseline assessment, n=40,270), or did not have two automated measurements  
111 of systolic BP (SBP) and diastolic BP (DBP) at baseline after exclude excluding  
112 extreme measurements (n=41,437) (Figure S1).

## 113 **Measurement of blood pressure**

114 SBP and DBP, in millimeters of mercury, were calculated as the mean of two  
115 measurements taken at least one minute apart, taken using an Omron HEM-7015IT  
116 digital BP monitor (Omron Healthcare). Hypertension was categorized using the  
117 American Heart Association (AHA) 2017 guidelines (no hypertension: SBP <130  
118 mmHg and DBP <80 mmHg; and hypertension: SBP  $\geq$ 130 mmHg or DBP  $\geq$ 80  
119 mmHg).<sup>17</sup>

## 120 **Outcomes**

121 The primary outcome was incident atherosclerotic CVD, defined as a primary  
122 diagnosis of fatal or non-fatal coronary heart disease (CHD) or stroke. Secondary  
123 outcomes were incident CHD and stroke. Participant information on the date and  
124 cause of hospital admission(s) or death was obtained through linkage to hospital  
125 inpatient and death data.<sup>18</sup> The present analyses were censored separately for  
126 incident CVD outcomes at the date of diagnosis or death, loss to follow-up, or  
127 administrative censoring for each country (31<sup>st</sup> October 2022 for England, 31<sup>st</sup> August  
128 2022 for Scotland, 31<sup>st</sup> May 2022 for Wales) whichever occurred first. CHD was  
129 defined by a primary diagnosis of incident (fatal or non-fatal) CHD (ICD-10  
130 [international classification of diseases, 10th revision] codes I21-I25) or coronary  
131 revascularization (OPCS-4 [Classification of Interventions and Procedures, 4th  
132 revision] codes K49, K50, K75, K40-K46). Stroke was defined by a primary diagnosis  
133 of incident (fatal or non-fatal) stroke (ICD-10 codes I60-I61, I63-I64).



## 134 **Statistical analyses**

135 Baseline characteristics for the overall population and women and men separately are  
136 presented as number (percentage) for categorical variables, or mean (standard  
137 deviation) or median (interquartile interval) for continuous variables as appropriate.

138 Sex-differences in the relationship of BP with CVD outcomes were explored using  
139 three approaches: (i) sex-specific risks and risk differences, (ii) sex-specific RRs, and  
140 (iii) sex-combined RRs. Poisson regression models were used to obtain age-adjusted  
141 rates and rate differences of incident CVD events (per 10,000 person-years), by sex  
142 and BP group.<sup>19</sup> Cox proportional hazards regression models were used to estimate  
143 hazard ratios for CVD.<sup>19</sup> For simplicity and ease of interpretation, Poisson-derived  
144 rates and Cox-derived hazards ratios are hereafter referred to as 'risks' and 'relative  
145 risks' (RRs), respectively. SBP and DBP were modelled using ordinal groups of 5 mm  
146 Hg, with reference groups for BP chosen based on previous literature.<sup>4,8</sup> For sex-  
147 specific analyses, SBP 110-<115 mmHg and DBP 70-<75 mmHg in women and men  
148 were taken as the reference groups for each sex taken separately. For sex-combined  
149 analyses, men with SBP 100-<115 mmHg and men with DBP 70-<75 mmHg were  
150 taken as the common reference groups for both sexes. Then the sex-specific BP-CVD  
151 association was modelled continuously in increments of 10 mmHg for SBP and 5  
152 mmHg for DBP, for both sexes. Finally, BP was modelled using the 2017 ACC/AHA  
153 BP guideline categories.<sup>17</sup>

154 All analyses were adjusted for age at recruitment (years), and multivariable models  
155 were additionally adjusted for the Townsend deprivation index (fifths from least to most  
156 affluent using national cut-off points, unknown), smoking status (never, former, light  
157 smokers [<15 cigarettes/d], medium smokers [15-<30 cigarettes/d], heavy smokers

158  $\geq 30$  cigarettes/d], smoker of unknown number of cigarettes, unknown), body mass  
159 index (BMI;  $\text{kg/m}^2$ , unknown), diabetes (yes, no, unknown), antihypertensive  
160 medication use (yes, no, unknown), lipid-lowering medication use (yes, no, unknown),  
161 total cholesterol (mmol/L), and high-density lipoprotein cholesterol (HDL-C; mmol/L).  
162 Percentages of missing for each covariate were  $<7\%$ , except for HDL-C (14.0%)  
163 (Table S1).

### 164 **Subgroup analyses**

165 To investigate whether sex differences in the associations of BP with CVD differed by  
166 age group ( $<50$ ,  $50-<55$ ,  $55-<60$ , and  $\geq 60$  years), we added a three-way interaction  
167 between sex, age group, and the BP exposure of interest to the models. To assess  
168 trend across age groups separately for men and women (P-trend) and in the three-  
169 way interaction (P-interaction) we used likelihood ratio tests (LRTs). Similarly,  
170 subgroup analyses were conducted by menopausal status (pre-menopausal,  
171 menopausal) in women, which was defined by self-report and other relevant factors  
172 (such as bilateral oophorectomy and use of hormone-replacement therapy).<sup>20</sup>

### 173 **Sensitivity analyses**

174 We conducted a sensitivity analysis restricting to participants not taking  
175 antihypertensive medication at baseline. Also, to assess the potential influence of  
176 regression dilution bias <sup>21</sup> we calculated sex-specific regression dilution ratios in a  
177 subsample of participants with BP measurements taken, on average, 10.6 years apart  
178 ( $n=51,375$ , 8.2% of the main study sample). RRs were corrected for regression dilution  
179 bias by multiplying the regression coefficients by the reciprocal of the regression  
180 dilution ratio.

181 We tested the proportional hazards assumption for our Cox models using Schoenfeld  
182 residuals, which showed no evidence of violation for exposures and covariates of  
183 interest in multivariable models for any outcome.

184 STATA version 18.0 (StataCorp LP, College Station, Texas) was used for data  
185 analyses and R 4.3.3 (R Core Team, Vienna, Austria) was used to create figures.

## 186 **Results**

187 The baseline characteristics of 420,649 participants (56.0% women) without prior CVD  
188 included in the present analyses are shown in **Table 1**. At baseline, a lower proportion  
189 of women than men had hypertension, or taking antihypertensive or lipid lowering  
190 medication. Women had higher total cholesterol and HDL-C, and lower BMI. Among  
191 both women and men, participants with hypertension were older and had higher BMI,  
192 and a higher proportion were taking antihypertensive or lipid-lowering medication  
193 (Table S2). See Tables S3-S4 for baseline characteristics stratified by sex and SBP  
194 categories.

### 195 **Sex-specific risks and risk differences**

196 During a mean follow-up of 13.2 years, there were 28,628 (10,331 women), 21,146  
197 (6,774 women) and 8,321 (3,816 women) cases of incident CVD, CHD and stroke,  
198 respectively. Age-adjusted risks of incident CVD showed a “J-shaped” pattern and  
199 were higher among men in all categories of SBP and DBP (**Figure 1**). Risks of incident  
200 CVD were lowest at SBP 100-<105 mmHg for women (events per 10,000 person-  
201 years [95% CI], 15.6 [11.8-19.4]) and 110-<115 mmHg for men (47.2 [41.4-53.0]).  
202 Risks of incident CVD were lowest at DBP 60-<65 mmHg for women (22.7 [19.7-25.8])

203 and 65-<70 mmHg for men (63.3 [58.4-68.1]). Compared with SBP 100-<115 mmHg  
204 and DBP 70-<75 mmHg, sex-specific risk differences at higher levels of BP were larger  
205 among men than women (Table S5). We found similar patterns for CHD and stroke  
206 (Figures S2-S3 and Tables S6-S7).

## 207 **Sex-specific relative risks**

208 As would be expected from the risks, for SBP, there was an approximately “J-shaped”  
209 relationship for RRs of incident CVD for both sexes, which was roughly log-linear from  
210 nadirs of approximately 105 mmHg in women and 115 mmHg in men. Similarly, for  
211 DBP, with roughly log-linear increases from nadirs of approximately 65 mmHg in  
212 women and 75 mmHg in men (**Figure 2**). Sex-specific RRs for incident CVD, relative  
213 to 110-<115 mmHg for SBP and 70-<75 mmHg for DBP, were lowest at SBP 100-  
214 <105 mmHg (RR [95%CI], 0.76 [0.58-0.99]) and DBP 60-<65 mmHg (0.84 [0.72-0.97])  
215 among women, and lowest at SBP 110-<115 (reference category) and DBP 65-<70  
216 mmHg (0.98 [0.90-1.08]) for men, although CIs overlapped between adjacent BP  
217 groups. The association between higher SBP and increased RR was steeper among  
218 women compared with men. The patterns of sex differences in the associations of BP  
219 categories in relation to incident CHD and stroke were broadly similar, but with  
220 expected wider CIs (Figures S4-S5). The association between hypertension and CVD  
221 was stronger in women (RR hypertension vs no hypertension [95%CI], 1.62 [1.54-  
222 1.70]) than men (1.45 [1.39-1.52]) (Table S8). Stronger RRs for the associations  
223 between continuous BP and CVD were present among women than men. Equivalent,  
224 broadly similar, values for multivariable-adjusted RRs for the sex-specific associations  
225 of BP with all CVD outcomes are shown in Tables S8-S10.

## 226 **Sex-combined relative risks**

227 When comparing both women and men to the same reference group, men with SBP  
228 110-<115 mmHg (that is, men who had the lowest CVD risk), RRs of incident CVD in  
229 women were never higher than unity up to the 170<175 mmHg group and peaked at  
230 >180 mmHg when the RR was 1.32 (1.13, 1.53) (**Figure 3**). So, it is only women with  
231 SBP above 170 mmHg that had greater CVD risk than any man, in terms of risk  
232 according to SBP level. For DBP level, no category of women had higher risks than  
233 the lowest risk group for men of 70-<75 mmHg. Similar patterns were observed for  
234 CHD and stroke (Figures S6-S7). See Tables S11-S13 for age-adjusted and  
235 multivariable-adjusted sex-combined RRs for all CVD outcomes.

## 236 **Subgroup analyses**

237 The patterns of BP-CVD relationships were much the same in subgroup analyses by  
238 age (**Figure 4**, Table S14) and by menopause status in women (Table S15). RRs were  
239 greater for the associations between BP and incident CVD among younger age groups  
240 for both sexes and for pre-menopausal women compared with menopausal women,  
241 presumably due to the increasing risk with age.

## 242 **Sensitivity analyses**

243 When excluding participants taking antihypertensive medication at baseline, the  
244 directions of association remained similar, although the magnitude of RRs for CVD  
245 generally became stronger (Table S16).

246 Among 51,375 participants with baseline and follow-up BP measurements, regression  
247 dilution ratios for SBP and DBP were estimated to be 0.624 and 0.536, respectively,  
248 for women and 0.551 and 0.455, respectively, for men (Figure S8-S9). Baseline

249 characteristics were similar between participants with baseline and follow-up BP  
250 measurements and participants in the main study sample (Table S17). After correction  
251 for regression dilution, the sex-specific age-adjusted RRs by SBP and DBP levels for  
252 women moved slightly closer to those for men (Figure S10).

## 253 Discussion

254 This large study assessed sex-differences in the associations of BP with CVD, as well  
255 as CHD and stroke subtypes. CVD risks were higher among men than women at all  
256 levels of BP. Whilst there was a clear indication of a log-linear association starting  
257 substantially lower than current AHA treatment thresholds of SBP >130 mmHg and  
258 DBP >80 mmHg for both sexes. There was a “J-shaped” pattern relating increasing  
259 BP to CVD outcomes in both sexes, with a lower nadir in women (SBP 100-<105  
260 mmHg and DBP 60-<65 mmHg) than men (SBP 110->115 mmHg and DBP mmHg).  
261 RRs comparing to the reference groups of SBP 110-<115 or DBP 70-<75 were mostly  
262 higher for women than for men when the sexes were analyzed totally separately, but  
263 RDs showed the opposite relationship (**Figure 5**). Furthermore, when a common  
264 reference group of men with SBP at 110-115 mmHg or men at DBP 70-<75 mmHg  
265 was used, when analyzing the sexes together, the RRs for women were lower than for  
266 men at all BP levels, whilst the risk of CVD in women only exceeded that of men at  
267 their lowest level of risk at high levels of BP.

268 There is established evidence that exceeding the existing thresholds for normal BP  
269 (SBP > 120 mmHg or DBP >80 mmHg) is associated with an elevated risk of CVD in  
270 both sexes.<sup>22-24</sup> However, few studies have explored associations of BP levels below  
271 these thresholds with CVD risks, or considered BP categories as narrow as in this

272 study.<sup>4,8,25</sup> A recent study of 53,289 participants in the National Health and Nutrition  
273 Examination Survey (NHANES) found the risk of CVD mortality was lowest at SBP  
274 100-<110 mmHg in women and 110-<120 mmHg in men.<sup>8</sup> Another study of 27,452  
275 participants in four community-based cohorts found risks of CVD events were lowest  
276 at SBP <100 mmHg in women and <130 mmHg in men.<sup>4</sup> Other studies have  
277 considered CHD and stroke subtypes and, as in the current study, similar patterns  
278 were reported to those with CVD <sup>4,6</sup>. In this study there were higher risks present at  
279 around SBP <100 mmHg and DBP <60 mmHg, compared to slightly higher BP levels,  
280 for both sexes. This appeared to be more pronounced for SBP among men, as well  
281 as among women who were menopausal or ≥55 years of age in subgroup analyses.  
282 Investigators analyzing NHANES data identified the same pattern for SBP and CVD  
283 mortality for both men and women.<sup>8</sup> One explanation is that lower SBP is associated  
284 with higher mortality among patients with heart failure <sup>26</sup> and older adults (≥80) with  
285 frailty,<sup>27</sup> although our study excluded those with pre-existing CVD and was a  
286 predominantly middle-aged cohort.

287 Prior epidemiological studies suggest that the strength of associations between BP  
288 and CVD varies by sex.<sup>4,5,7,8,28,29</sup> Meta-analyses of observational studies have found  
289 that RRs for the association of BP with CVD events <sup>12</sup> and mortality <sup>11,30</sup> are stronger  
290 in women than men, although all studies concluded that these sex-based differences  
291 were not substantial. The most recent meta-analysis of 11 observational studies  
292 reported that AHA stage 1 hypertension was associated with 50% and 37% higher  
293 risks of CVD compared to normal BP in women and men, respectively.<sup>12</sup> Similarly, the  
294 present study found that hypertension was associated with a higher excess risk for  
295 incident CVD in women (46% higher) than men (32% higher) compared to no

296 hypertension. However, CVD risks remained higher in men than women for  
297 hypertension and across all levels of BP.

298 Studies consistently demonstrate that women have lower mean basal BP than  
299 men.<sup>31,32</sup> The trajectory of BP may differ by sex over time, with women exhibiting faster  
300 rise in BP from as early as the third decade of life.<sup>33</sup> The present study examined the  
301 roles of age and menopausal status, finding higher BP was associated with larger RRs  
302 for CVD among women that were pre-menopausal or younger (<55 years). The  
303 influence of age on the relationship between BP and CVD was more pronounced  
304 among women than men, with differences between age, sex and BP observed for all  
305 BP metrics.

306 Hormones, as well as anatomic and physiological differences, may explain sex-  
307 differences in optimal BP and BP trajectories over time.<sup>9</sup> Specifically, estrogen may  
308 exert benefit effects on the renin-angiotensin-aldosterone system influencing BP  
309 homeostasis, and increased plasma renin and sympathetic nerve activity and  
310 decreased nitric oxide have been observed in post-menopausal women.<sup>34-37</sup>  
311 Compared with men, women have smaller coronary arteries, smaller aortic root  
312 dimensions and lower aortic distensibility with age, as well as higher pulse pressure,  
313 which may make women more susceptible to the cardiovascular effects of  
314 hypertension.<sup>38-40</sup> Moreover some conditions specific to women, including premature  
315 menopause and pregnancy-associated hypertension, may worsen CVD outcomes  
316 when coincident with hypertension.<sup>41-43</sup> Lastly, emerging evidence suggests that the  
317 effect of genetic variants for BP are greater in women than men.<sup>44</sup>

318 Treatment for high BP is typically through antihypertensive drug therapy, although  
319 lifestyle changes, including salt reduction, can be expected to assist. In questioning



320 whether women should be treated differently to men it is necessary to consider  
321 whether they react to the drugs differently. Individual clinical trials have described sex-  
322 differences in the efficacy, pharmacodynamics and pharmacokinetics, and overall  
323 women report more adverse effects from antihypertensive medication.(6,7) However,  
324 the BP Lowering Treatment Trialists' Collaboration has found that, with  
325 antihypertensive drug treatment, BP reductions were similar for women and men in  
326 every comparison they made, and there was no sex difference in protection against  
327 CVD regardless of age or antihypertensive regimen.<sup>13,30</sup>

### 328 **Study strengths and limitations**

329 Strengths of this study include the prospective study design and large sample size,  
330 which allowed us to examine smaller ranges of BP than previously studied, as well as  
331 major CVD subtypes. We also considered the roles of age and menopausal status in  
332 more detail than prior studies. There are limitations to our study. BP measurements  
333 were taken at a single visit, which may be prone to measurement error.<sup>2</sup> Indeed, our  
334 assessment of regression dilution bias in BP using participants with repeat  
335 measurements suggests this may have led to an underestimation of reported RRs,  
336 particularly among men.<sup>45</sup> Because of the extensive baseline data available in UK  
337 Biobank, we were able to account for potential confounders, including serum total  
338 cholesterol and HDL-C. However, this study was unable to account for changes in  
339 these factors during the follow-up period, and we cannot exclude the effects of  
340 unmeasured and residual confounding, particularly in antihypertensive medication  
341 use. Reverse causation also cannot be ruled out, although we excluded participants  
342 with prior CVD at baseline. Finally, the UK Biobank study population is not nationally  
343 representative,<sup>46</sup> being predominantly of white ethnicity and higher than average social

344 advantage, and so our findings may be prone to selection bias, particularly for risk  
345 estimation, although risk factor associations still appear to be generalizable.<sup>47</sup> Lastly,  
346 we only studied CVD, whereas normal or optimal BP for other disease outcomes may  
347 differ, and the potential adverse effects at lower BP levels were not examined.

## 348 **Conclusions**

349 In this study we have separated the effects of BP levels by risk and RR, which have  
350 been confused in past literature (1) and considered narrow increments of BP. Our  
351 analyses suggest that the level at which hypertension is defined should not vary by  
352 sex. As regards to determining the level at which antihypertensive medication should  
353 be initiated to prevent CVD, the definition of hypertension itself is moot, since  
354 intervention should depend upon risk, not BP level alone,<sup>48,49</sup> provided that risk has  
355 been estimated using a sex-specific algorithm.

## 356 **Acknowledgements**

357 This research has been conducted using the UK Biobank Resource under  
358 application number 74018. We thank all participants, researchers and support staff  
359 who make the study possible. Bona fide researchers can apply to use the UK  
360 Biobank dataset by registering and applying at <http://ukbiobank.ac.uk/register-apply/>.

## 361 **Sources of Funding**

362 MW is supported by an Australian NHMRC Investigator Grant, Leadership 2  
363 (APP1174120). CC is supported by an Australian NHMRC Investigator Grant,  
364 Emerging Leadership 1 (APP2009726).  
365

## 366 **Disclosures**

367 MW has been a recent consultant to Freeline. All Other authors have no  
368 relationships relevant to the contents of this paper to disclose.

## 369 **Supplemental Material**

370 Figures S1-S10

371 Tables S1-S17

## 372 References

- 373 1. Whelton SP, McEvoy JW, Shaw L, Psaty BM, Lima JAC, Budoff M, Nasir K,  
374 Szklo M, Blumenthal RS, Blaha MJ. Association of normal systolic blood pressure  
375 level with cardiovascular disease in the absence of risk factors. *JAMA Cardiol.*  
376 2020;5:1011-1018. doi: 10.1001/jamacardio.2020.1731
- 377 2. Muntner P, Shimbo D, Carey RM, Charleston JB, Gaillard T, Misra S, Myers  
378 MG, Ogedegbe G, Schwartz JE, Townsend RR, et al. Measurement of blood  
379 pressure in humans: a scientific statement from the American Heart Association.  
380 *Hypertension.* 2019;73:e35-e66. doi: 10.1161/hyp.0000000000000087
- 381 3. Gerds E, Sudano I, Brouwers S, Borghi C, Bruno RM, Ceconi C, Cornelissen  
382 V, Diévarf F, Ferrini M, Kahan T, et al. Sex differences in arterial hypertension. *Eur*  
383 *Heart J.* 2022;43:4777-4788. doi: 10.1093/eurheartj/ehac470
- 384 4. Ji H, Niiranen TJ, Rader F, Henglin M, Kim A, Ebinger JE, Claggett B, Merz  
385 CNB, Cheng S. Sex differences in blood pressure associations with cardiovascular  
386 outcomes. *Circulation.* 2021;143:761-763. doi: 10.1161/circulationaha.120.049360
- 387 5. Boggia J, Thijs L, Hansen TW, Li Y, Kikuya M, Björklund-Bodegård K, Richart  
388 T, Ohkubo T, Jeppesen J, Torp-Pedersen C, et al. Ambulatory blood pressure  
389 monitoring in 9357 subjects from 11 populations highlights missed opportunities for  
390 cardiovascular prevention in women. *Hypertension.* 2011;57:397-405. doi:  
391 10.1161/hypertensionaha.110.156828
- 392 6. Hermida RC, Ayala DE, Mojón A, Fontao MJ, Chayán L, Fernández JR.  
393 Differences between men and women in ambulatory blood pressure thresholds for

- 394 diagnosis of hypertension based on cardiovascular outcomes. *Chronobiol Int.*  
395 2013;30:221-232. doi: 10.3109/07420528.2012.701487
- 396 7. Kringeland E, Tell GS, Midtbø H, Igland J, Haugsgjerd TR, Gerdtts E. Stage 1  
397 hypertension, sex, and acute coronary syndromes during midlife: the Hordaland  
398 Health Study. *Eur J Prev Cardiol.* 2022;29:147-154. doi: 10.1093/eurjpc/zwab068
- 399 8. Elfassy T, German CA, Muntner P, Choi E, Contreras G, Shimbo D, Yang E.  
400 Blood pressure and cardiovascular disease mortality among US adults: a sex-  
401 stratified analysis, 1999-2019. *Hypertension.* 2023;80:1452-1462. doi:  
402 10.1161/HYPERTENSIONAHA.123.21228
- 403 9. Chapman N, Ching SM, Konradi AO, Nuyt AM, Khan T, Twumasi-Ankrah B,  
404 Cho EJ, Schutte AE, Touyz RM, Steckelings UM, et al. Arterial hypertension in  
405 women: state of the art and knowledge gaps. *Hypertension.* 2023;80:1140-1149. doi:  
406 10.1161/hypertensionaha.122.20448
- 407 10. Lewington S, Clarke R, Qizilbash N, Peto R, Collins R. Age-specific relevance  
408 of usual blood pressure to vascular mortality: a meta-analysis of individual data for  
409 one million adults in 61 prospective studies. *Lancet.* 2002;360:1903-1913. doi:  
410 10.1016/s0140-6736(02)11911-8
- 411 11. Lawes CM, Rodgers A, Bennett DA, Parag V, Suh I, Ueshima H, MacMahon  
412 S. Blood pressure and cardiovascular disease in the Asia Pacific region. *J*  
413 *Hypertens.* 2003;21:707-716. doi: 10.1097/00004872-200304000-00013
- 414 12. Han M, Chen Q, Liu L, Li Q, Ren Y, Zhao Y, Liu D, Zhang D, Liu F, Chen X, et  
415 al. Stage 1 hypertension by the 2017 American College of Cardiology/American  
416 Heart Association hypertension guidelines and risk of cardiovascular disease events:



- 417 systematic review, meta-analysis, and estimation of population etiologic fraction of  
418 prospective cohort studies. *J Hypertens*. 2020;38:573-578. doi:  
419 10.1097/hjh.0000000000002321
- 420 13. Bidel Z, Nazarzadeh M, Canoy D, Copland E, Gerds E, Woodward M, Gupta  
421 AK, Reid CM, Cushman WC, Wachtell K, et al. Sex-specific effects of blood pressure  
422 lowering pharmacotherapy for the prevention of cardiovascular disease: an individual  
423 participant-level data meta-analysis. *Hypertension*. 2023;80:2293-2302. doi:  
424 10.1161/hypertensionaha.123.21496
- 425 14. Coylewright M, Reckelhoff JF, Ouyang P. Menopause and hypertension: an  
426 age-old debate. *Hypertension*. 2008;51:952-959. doi:  
427 10.1161/hypertensionaha.107.105742
- 428 15. Collins R. What makes UK Biobank special? *Lancet*. 2012;379:1173-1174.  
429 doi: 10.1016/s0140-6736(12)60404-8
- 430 16. Sudlow C, Gallacher J, Allen N, Beral V, Burton P, Danesh J, Downey P,  
431 Elliott P, Green J, Landray M, et al. UK biobank: an open access resource for  
432 identifying the causes of a wide range of complex diseases of middle and old age.  
433 *PLoS Med* 2015;12:e1001779. doi: 10.1371/journal.pmed.1001779
- 434 17. Whelton PK, Carey RM, Aronow WS, Casey DE, Jr., Collins KJ, Dennison  
435 Himmelfarb C, DePalma SM, Gidding S, Jamerson KA, Jones DW, et al. 2017  
436 ACC/AHA/AAPA/ABC/ACPM/AGS/APhA/ASH/ASPC/NMA/PCNA guideline for the  
437 prevention, detection, evaluation, and management of high blood pressure in adults:  
438 a report of the American College of Cardiology/American Heart Association Task

- 439 Force on clinical practice guidelines. *J Am Coll Cardiol*. 2018;71:e127-e248. doi:  
440 10.1016/j.jacc.2017.11.006
- 441 18. Kelly RK, Tong TYN, Watling CZ, Reynolds A, Piernas C, Schmidt JA, Papier  
442 K, Carter JL, Key TJ, Perez-Cornago A. Associations between types and sources of  
443 dietary carbohydrates and cardiovascular disease risk: a prospective cohort study of  
444 UK Biobank participants. *BMC Med*. 2023;21:34. doi: 10.1186/s12916-022-02712-7
- 445 19. Woodward M. Rationale and tutorial for analysing and reporting sex  
446 differences in cardiovascular associations. *Heart*. 2019;105:1701-1708. doi:  
447 10.1136/heartjnl-2019-315299
- 448 20. Watling CZ, Schmidt JA, Dunneram Y, Tong TYN, Kelly RK, Knuppel A,  
449 Travis RC, Key TJ, Perez-Cornago A. Risk of cancer in regular and low meat-eaters,  
450 fish-eaters, and vegetarians: a prospective analysis of UK Biobank participants. *BMC*  
451 *Med*. 2022;20:73. doi: 10.1186/s12916-022-02256-w
- 452 21. MacMahon S, Peto R, Cutler J, Collins R, Sorlie P, Neaton J, Abbott R,  
453 Godwin J, Dyer A, Stamler J. Blood pressure, stroke, and coronary heart disease.  
454 Part 1, Prolonged differences in blood pressure: prospective observational studies  
455 corrected for the regression dilution bias. *Lancet*. 1990;335:765-774. doi:  
456 10.1016/0140-6736(90)90878-9
- 457 22. Huang Y, Su L, Cai X, Mai W, Wang S, Hu Y, Wu Y, Tang H, Xu D.  
458 Association of all-cause and cardiovascular mortality with prehypertension: a meta-  
459 analysis. *Am Heart J*. 2014;167:160-168.e161. doi: 10.1016/j.ahj.2013.10.023

- 460 23. Huang Y, Wang S, Cai X, Mai W, Hu Y, Tang H, Xu D. Prehypertension and  
461 incidence of cardiovascular disease: a meta-analysis. *BMC Med.* 2013;11:177. doi:  
462 10.1186/1741-7015-11-177
- 463 24. Guo X, Zhang X, Guo L, Li Z, Zheng L, Yu S, Yang H, Zhou X, Zhang X, Sun  
464 Z, et al. Association between pre-hypertension and cardiovascular outcomes: a  
465 systematic review and meta-analysis of prospective studies. *Curr Hypertens Rep.*  
466 2013;15:703-716. doi: 10.1007/s11906-013-0403-y
- 467 25. Nomura K, Asayama K, Thijs L, Niiranen TJ, Lujambio I, Boggia J, Hozawa A,  
468 Ohkubo T, Hara A, Johansson JK, et al. Thresholds for conventional and home  
469 blood pressure by sex and age in 5018 participants from 5 populations.  
470 *Hypertension.* 2014;64:695-701. doi: 10.1161/hypertensionaha.114.03839
- 471 26. Tsimploulis A, Lam PH, Arundel C, Singh SN, Morgan CJ, Faselis C,  
472 Deedwania P, Butler J, Aronow WS, Yancy CW, et al. Systolic blood pressure and  
473 outcomes in patients with heart failure with preserved ejection fraction. *JAMA*  
474 *Cardiol.* 2018;3:288-297. doi: 10.1001/jamacardio.2017.5365
- 475 27. Ravindrarajah R, Hazra NC, Hamada S, Charlton J, Jackson SHD, Dregan A,  
476 Gulliford MC. Systolic blood pressure trajectory, frailty, and all-cause mortality >80  
477 years of age: cohort study using electronic health records. *Circulation.*  
478 2017;135:2357-2368. doi: 10.1161/circulationaha.116.026687
- 479 28. Millett ERC, Peters SAE, Woodward M. Sex differences in risk factors for  
480 myocardial infarction: cohort study of UK Biobank participants. *BMJ.*  
481 2018;363:k4247. doi: 10.1136/bmj.k4247

- 482 29. Anand SS, Islam S, Rosengren A, Franzosi MG, Steyn K, Yusufali AH, Keltai  
483 M, Diaz R, Rangarajan S, Yusuf S. Risk factors for myocardial infarction in women  
484 and men: insights from the INTERHEART study. *Eur Heart J*. 2008;29:932-940. doi:  
485 10.1093/eurheartj/ehn018
- 486 30. Turnbull F, Woodward M, Neal B, Barzi F, Ninomiya T, Chalmers J, Perkovic  
487 V, Li N, MacMahon S. Do men and women respond differently to blood pressure-  
488 lowering treatment? Results of prospectively designed overviews of randomized  
489 trials. *Eur Heart J*. 2008;29:2669-2680. doi: 10.1093/eurheartj/ehn427
- 490 31. Martins D, Nelson K, Pan D, Tareen N, Norris K. The effect of gender on age-  
491 related blood pressure changes and the prevalence of isolated systolic hypertension  
492 among older adults: data from NHANES III. *J Genet Specif Med*. 2001;4:10-13, 20.
- 493 32. Muntner P, Carey RM, Gidding S, Jones DW, Taler SJ, Wright JT, Jr.,  
494 Whelton PK. Potential US population impact of the 2017 ACC/AHA high blood  
495 pressure guideline. *Circulation*. 2018;137:109-118. doi:  
496 10.1161/circulationaha.117.032582
- 497 33. Ji H, Kim A, Ebinger JE, Niiranen TJ, Claggett BL, Bairey Merz CN, Cheng S.  
498 Sex differences in blood pressure trajectories over the life course. *JAMA Cardiol*.  
499 2020;5:19-26. doi: 10.1001/jamacardio.2019.5306
- 500 34. Nwia SM, Leite APO, Li XC, Zhuo JL. Sex differences in the renin-  
501 angiotensin-aldosterone system and its roles in hypertension, cardiovascular, and  
502 kidney diseases. *Front Cardiovasc Med*. 2023;10:1198090. doi:  
503 10.3389/fcvm.2023.1198090

- 504 35. Yanes LL, Romero DG, Iliescu R, Zhang H, Davis D, Reckelhoff JF.  
505 Postmenopausal hypertension: role of the renin-angiotensin system. *Hypertension*.  
506 2010;56:359-363. doi: 10.1161/hypertensionaha.110.152975
- 507 36. Vongpatanasin W. Autonomic regulation of blood pressure in menopause.  
508 *Semin Reprod Med*. 2009;27:338-345. doi: 10.1055/s-0029-1225262
- 509 37. Majmudar NG, Robson SC, Ford GA. Effects of the menopause, gender, and  
510 estrogen replacement therapy on vascular nitric oxide activity. *J Clin Endocrinol*  
511 *Metab*. 2000;85:1577-1583. doi: 10.1210/jcem.85.4.6530
- 512 38. Remfry E, Ardissino M, McCracken C, Szabo L, Neubauer S, Harvey NC,  
513 Mamas MA, Robson J, Petersen SE, Raisi-Estabragh Z. Sex-based differences in  
514 risk factors for incident myocardial infarction and stroke in the UK Biobank. *Eur Heart*  
515 *J Qual Care Clin Outcomes*. 2024;10:132-142. doi: 10.1093/ehjqcco/qcad029
- 516 39. Dickerson JA, Nagaraja HN, Raman SV. Gender-related differences in  
517 coronary artery dimensions: a volumetric analysis. *Clin Cardiol*. 2010;33:E44-49. doi:  
518 10.1002/clc.20509
- 519 40. Lønnebakken MT, Izzo R, Mancusi C, Losi MA, Stabile E, Rozza F, Gerdtts E,  
520 Trimarco B, de Luca N, de Simone G. Aortic root dimension and arterial stiffness in  
521 arterial hypertension: the Campania Salute Network. *J Hypertens*. 2016;34:1109-  
522 1114. doi: 10.1097/hjh.0000000000000932
- 523 41. Nguyen AH, Hurwitz M, Sullivan SA, Saad A, Kennedy JLW, Sharma G.  
524 Update on sex specific risk factors in cardiovascular disease. *Front Cardiovasc Med*.  
525 2024;11:1352675. doi: 10.3389/fcvm.2024.1352675

- 526 42. Beale AL, Meyer P, Marwick TH, Lam CSP, Kaye DM. Sex differences in  
527 cardiovascular pathophysiology: why women are overrepresented in heart failure  
528 with preserved ejection fraction. *Circulation*. 2018;138:198-205. doi:  
529 10.1161/circulationaha.118.034271
- 530 43. Hondros CAB, Khan I, Solvik M, Hanseth S, Pedersen EKR, Hovland S,  
531 Larsen TH, Lønnebakken MT. Compositional plaque progression in women and men  
532 with non-obstructive coronary artery disease. *Int J Cardiol Heart Vasc*.  
533 2024;51:101352. doi: 10.1016/j.ijcha.2024.101352
- 534 44. Yang ML, Xu C, Gupte T, Hoffmann TJ, Iribarren C, Zhou X, Ganesh SK. Sex-  
535 specific genetic architecture of blood pressure. *Nat Med*. 2024;30:818-828. doi:  
536 10.1038/s41591-024-02858-2
- 537 45. Frost C , SG T. Correcting for regression dilution bias: comparison of methods  
538 for a single predictor variable. *J R Stat Soc: Ser A*. 2000;163:173–189.
- 539 46. Fry A, Littlejohns TJ, Sudlow C, Doherty N, Adamska L, Sprosen T, Collins R,  
540 Allen NE. Comparison of sociodemographic and health-related characteristics of UK  
541 Biobank participants with those of the general population. *Am J Epidemiol*.  
542 2017;186:1026-1034. doi: 10.1093/aje/kwx246
- 543 47. Batty GD, Gale CR, Kivimäki M, Deary IJ, Bell S. Comparison of risk factor  
544 associations in UK Biobank against representative, general population based studies  
545 with conventional response rates: prospective cohort study and individual participant  
546 meta-analysis. *BMJ*. 2020;368:m131. doi: 10.1136/bmj.m131
- 547 48. Karmali KN, Lloyd-Jones DM, van der Leeuw J, Goff DC, Jr., Yusuf S,  
548 Zanchetti A, Glasziou P, Jackson R, Woodward M, Rodgers A, et al. Blood pressure-

549 lowering treatment strategies based on cardiovascular risk versus blood pressure: a  
550 meta-analysis of individual participant data. *PLoS medicine*. 2018;15:e1002538. doi:  
551 10.1371/journal.pmed.1002538

552 49. Nazarzadeh M, Canoy D, Bidel Z, Copland E, Rahimi K, Teo K, Davis BR,  
553 Chalmers J, Pepine CJ, Woodward M. The Blood Pressure Lowering Treatment  
554 Trialists' Collaboration: methodological clarifications of recent reports. *J Hypertens*.  
555 2022;40:847-852. doi: 10.1097/hjh.0000000000003107

556

557 **Tables**558 **Table 1. Baseline characteristics and incident cardiovascular disease events for 420,649 UK Biobank participants.**

	<b>Overall</b>	<b>Women</b>	<b>Men</b>
<b>Characteristics</b>	<b>(n = 420,649)</b>	<b>(n = 235,556)</b>	<b>(n = 185,093)</b>
Incident total CVD cases during follow-up, n	28,628	10,331	18,297
Incident CHD cases during follow-up	21,146	6,774	14,372
Incident stroke cases during follow-up	8,321	3,816	4,505
Age, mean (SD)	56.1 (8.1)	56.1 (8.0)	56.1 (8.2)
Ethnicity			
White	395,023 (94.4%)	221,497 (94.4%)	173,526 (94.3%)
Other*	23,587 (5.6%)	13,096 (5.6%)	10,491 (5.7%)



Socioeconomic status

Townsend deprivation index score, median (IQR)	-2.2 (-3.7-0.4)	-2.2 (-3.6-0.4)	-2.2 (-3.7-0.5)
--	-----------------	-----------------	-----------------

Townsend deprivation fifths:

First (least deprived)	158,076 (37.6%)	88,349 (37.5%)	69,727 (37.7%)
Second	86,275 (20.5%)	48,820 (20.7%)	37,455 (20.2%)
Third	62,888 (15.0%)	35,753 (15.2%)	27,135 (14.7%)
Fourth	56,033 (13.3%)	31,621 (13.4%)	24,412 (13.2%)
Fifth (most deprived)	57,377 (13.6%)	31,013 (13.2%)	26,364 (14.2%)

Smoking status:

Never	234,198 (56.0%)	141,014 (60.2%)	93,184 (50.6%)
Previous	141,099 (33.7%)	72,978 (31.1%)	68,121 (37.0%)
Current light (<15 cigarettes/day)	13,015 (3.1%)	7,698 (3.3%)	5,317 (2.9%)

Current medium (15-<30 cigarettes/day)	14,309 (3.4%)	7,061 (3.0%)	7,248 (3.9%)
Current heavy (>30 cigarettes/day)	15,966 (3.8%)	5,676 (2.4%)	10,290 (5.6%)
Diabetes	47,783 (11.4%)	24,742 (10.5%)	23,041 (12.5%)
Medication use:			
Antihypertensive medication use	95,299 (22.7%)	47,265 (20.1%)	48,034 (26.0%)
Lipid-lowering medication use	56,537 (13.4%)	24,759 (10.5%)	31,778 (17.2%)
Blood Pressure (mmHg):			
SBP, mean (SD)	137.7 (18.6)	135.1 (19.2)	141.0 (17.3)
DBP, mean (SD)	82.4 (10.1)	80.7 (9.9)	84.4 (9.9)
Hypertension	304,617 (72.4%)	155,855 (66.2%)	148,762 (80.4%)
BMI (kg/m <sup>2</sup> ):			
BMI, mean (SD)	27.3 (4.7)	26.9 (5.1)	27.7 (4.2)

Overweight (25-<30)	178,943 (42.5%)	86,903 (36.9%)	92,040 (49.7%)
Obesity (≥30)	98,752 (23.5%)	53,836 (22.9%)	44,916 (24.3%)
Serum lipids (mmol/L):			
Total cholesterol, mean (SD)	5.8 (1.1)	5.9 (1.1)	5.6 (1.1)
HDL-C, mean (SD)	1.5 (0.4)	1.6 (0.4)	1.3 (0.3)

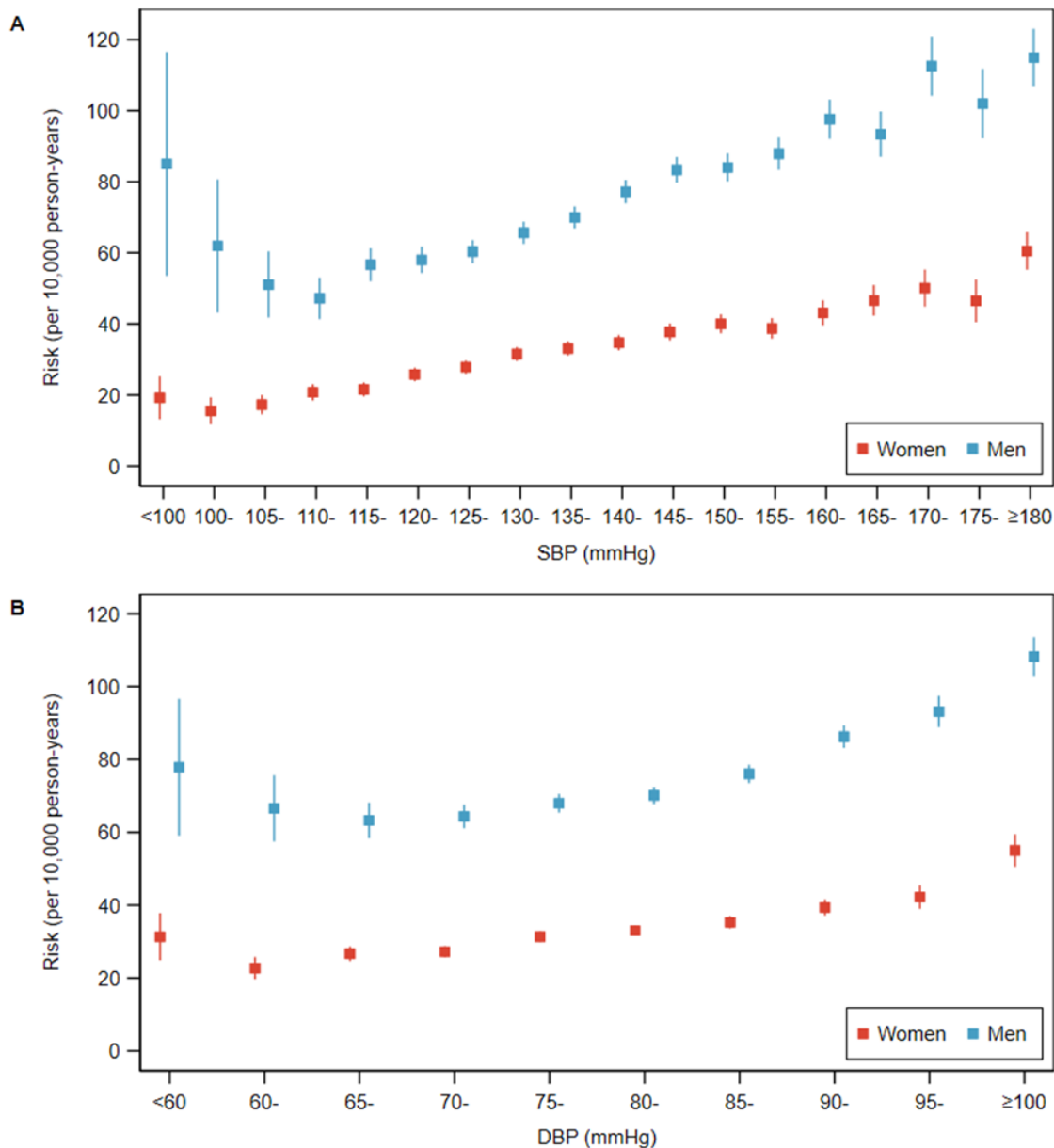
---

Numbers are participant numbers (%), with % representing the column percentage estimated excluding participants with missing responses, unless otherwise specified.

\*Includes Asian or Asian British, black or black British, Caribbean, African, any other black background, Chinese, other ethnic group, white and black Caribbean, white and black African, white and Asian, any other mixed background, Indian, Pakistani, Bangladeshi, any other Asian background.

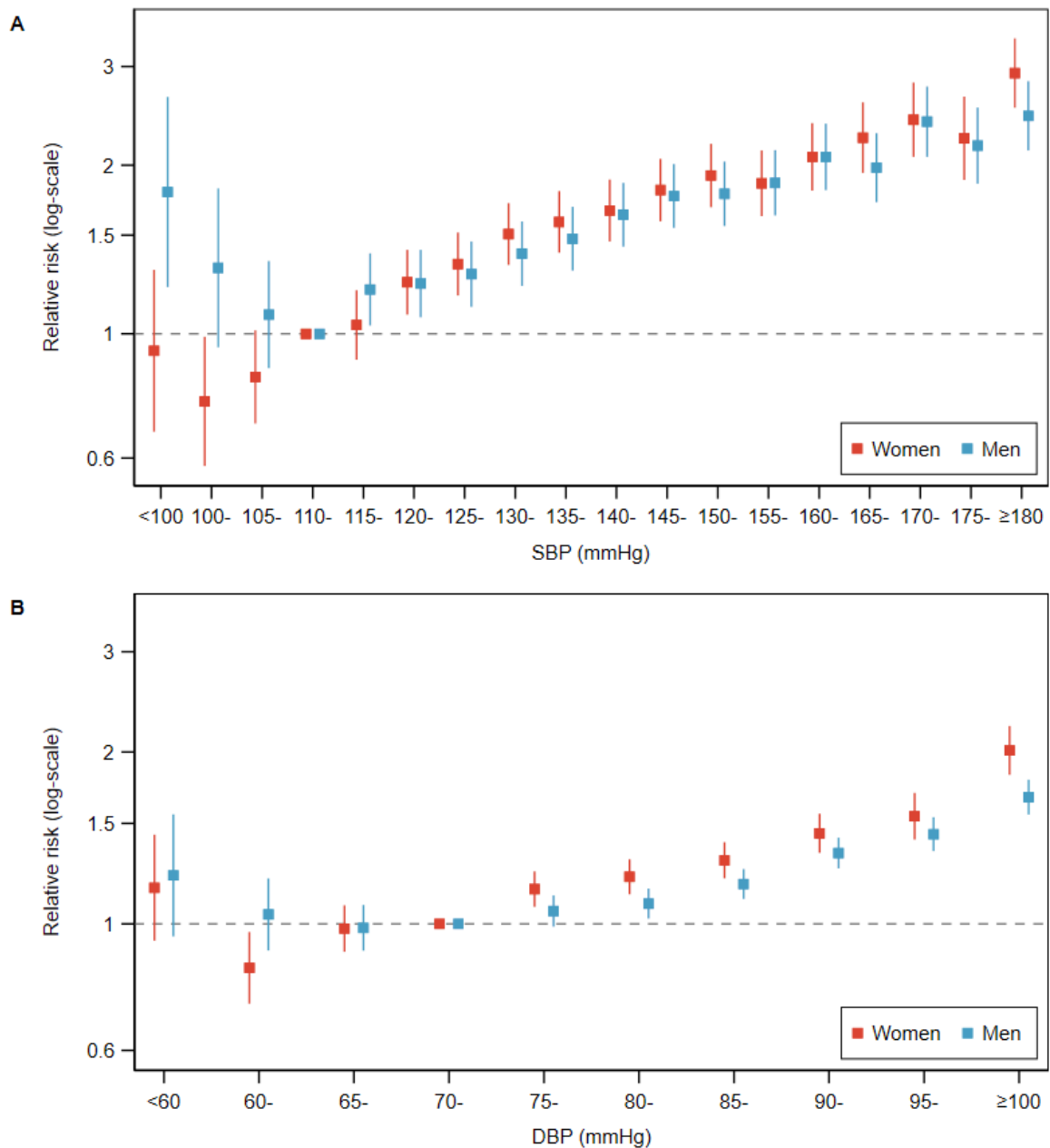
BMI = body mass index; CHD = coronary heart disease; CVD = cardiovascular disease; DBP = diastolic blood pressure; HDL-C = high-density lipoprotein cholesterol; IQR = interquartile range; kg/m<sup>2</sup> = kilogram per square meter; mmHg = millimeters of mercury; mmol/L = millimoles per liter; SBP = systolic blood pressure; SD = standard deviation.

## 560 Figures and Figure Legends



561

562 **Figure 1. Risks of cardiovascular disease by level of blood pressure for each**  
563 **sex.** Scatterplot showing age-adjusted risks (per 10,000 person-years) for incident  
564 cardiovascular disease across categories of (A) SBP and (B) DBP in women (red)  
565 and men (blue). Vertical lines indicate corresponding 95% confidence intervals. DBP  
566 = diastolic blood pressure; mmHg = millimeters of mercury; SBP = systolic blood  
567 pressure.



568

569 **Figure 2. Sex-specific relative risks relating blood pressure to cardiovascular**

570 **disease.** Scatterplot showing age-adjusted sex-specific relative risks for incident

571 cardiovascular disease across categories of (A) SBP and (B) DBP in women (red)

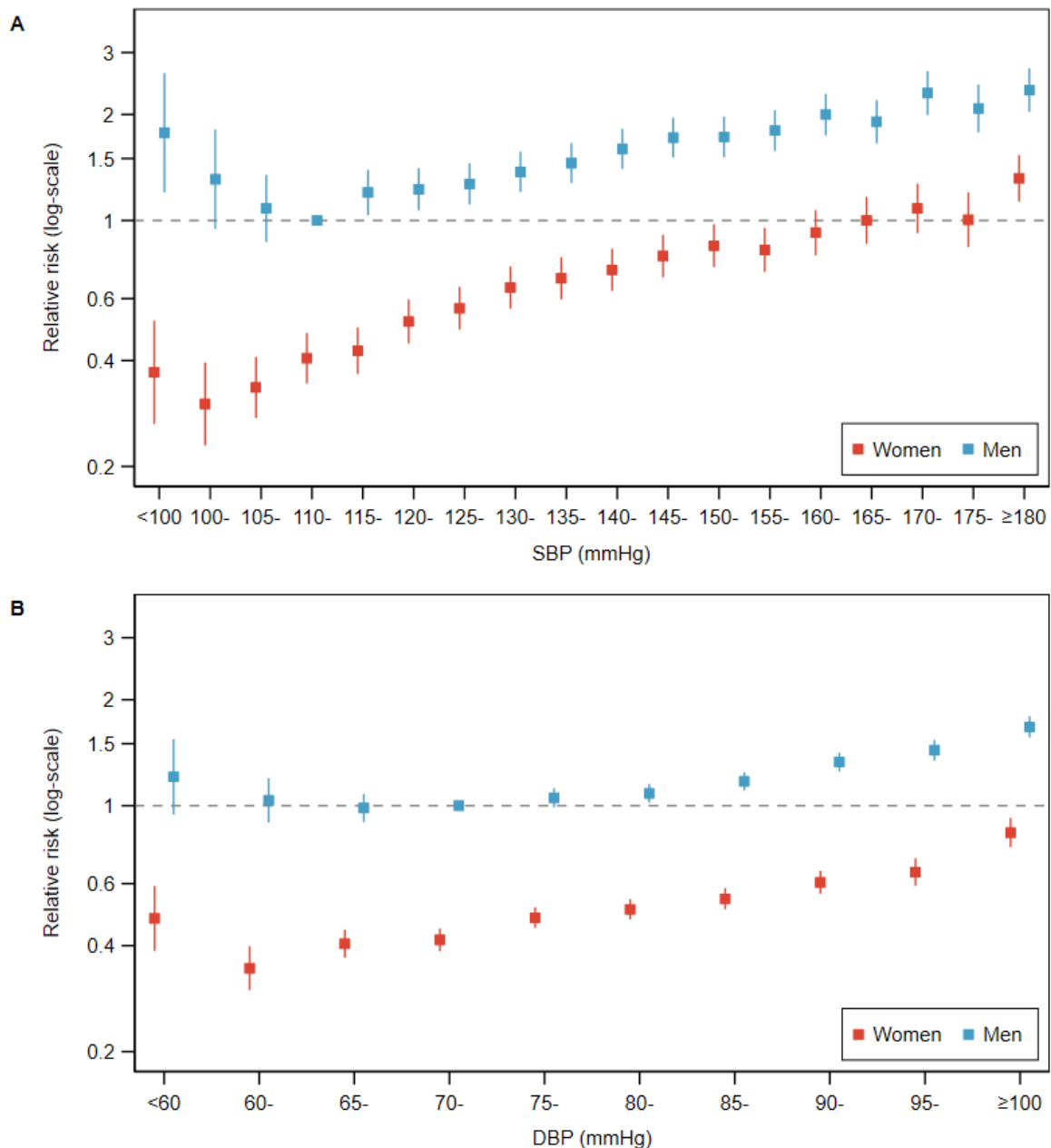
572 and men (blue). Vertical lines indicate corresponding 95% confidence intervals. The

573 reference category for SBP was 110-115 mmHg in both sexes separately. The

574 reference category for DBP was 70-<75 mmHg in both sexes separately. DBP =

575 diastolic blood pressure; mmHg = millimeters of mercury; SBP = systolic blood

576 pressure.



577

578

**Figure 3. Sex-combined relative risks relating blood pressure to**

579

**cardiovascular disease.** Scatterplot showing age-adjusted sex-specific relative

580

risks for incident cardiovascular disease across categories of (A) SBP and (B) DBP

581

in women (red) and men (blue). Vertical lines indicate corresponding 95%

582

confidence intervals. The reference category for SBP was men at 110-115 mmHg for

583

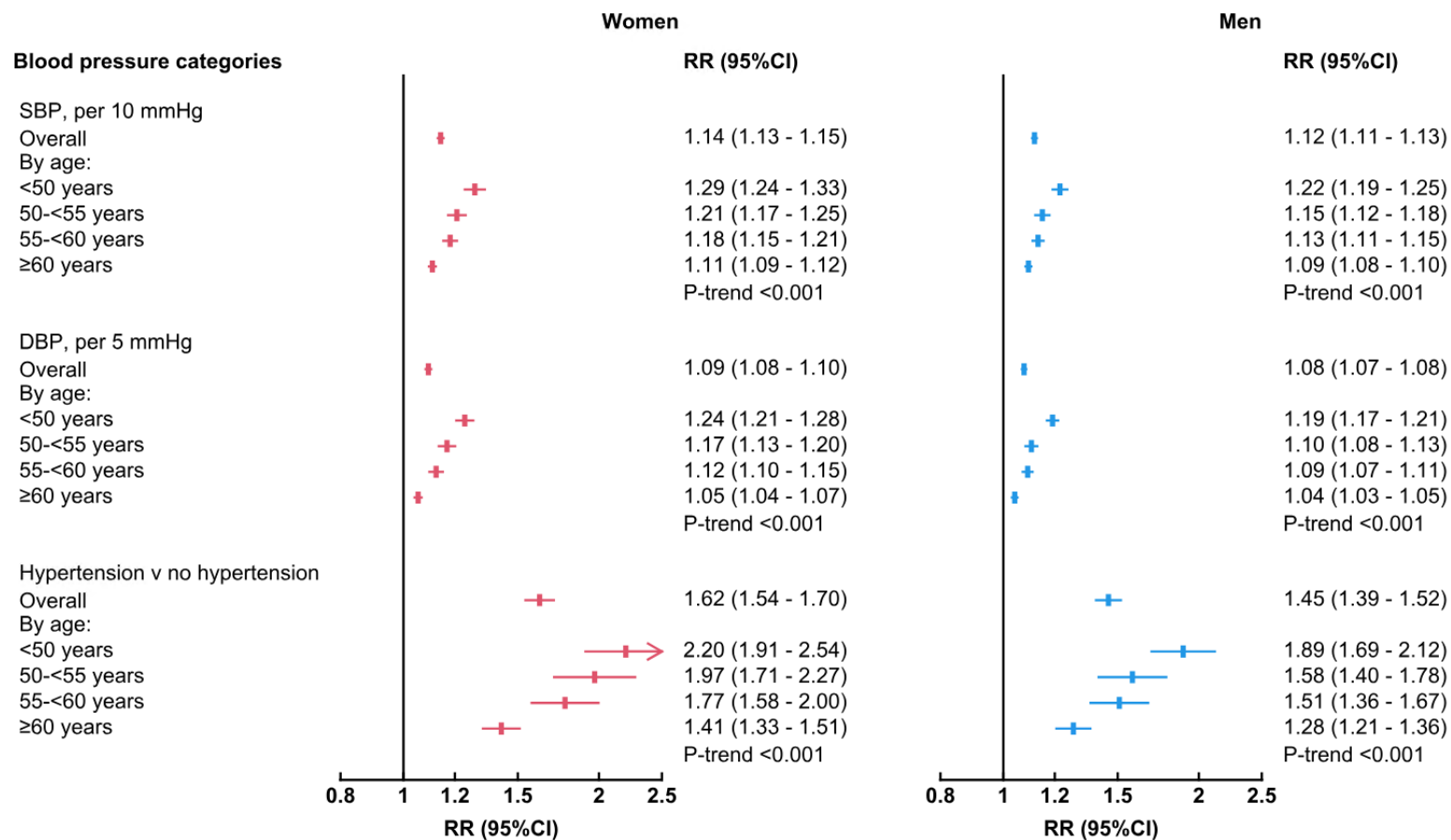
both women and men. The reference category for DBP was men at 70-<75 mmHg

584

for both women and men. DBP = diastolic blood pressure; mmHg = millimeters of

585

mercury; SBP = systolic blood pressure.



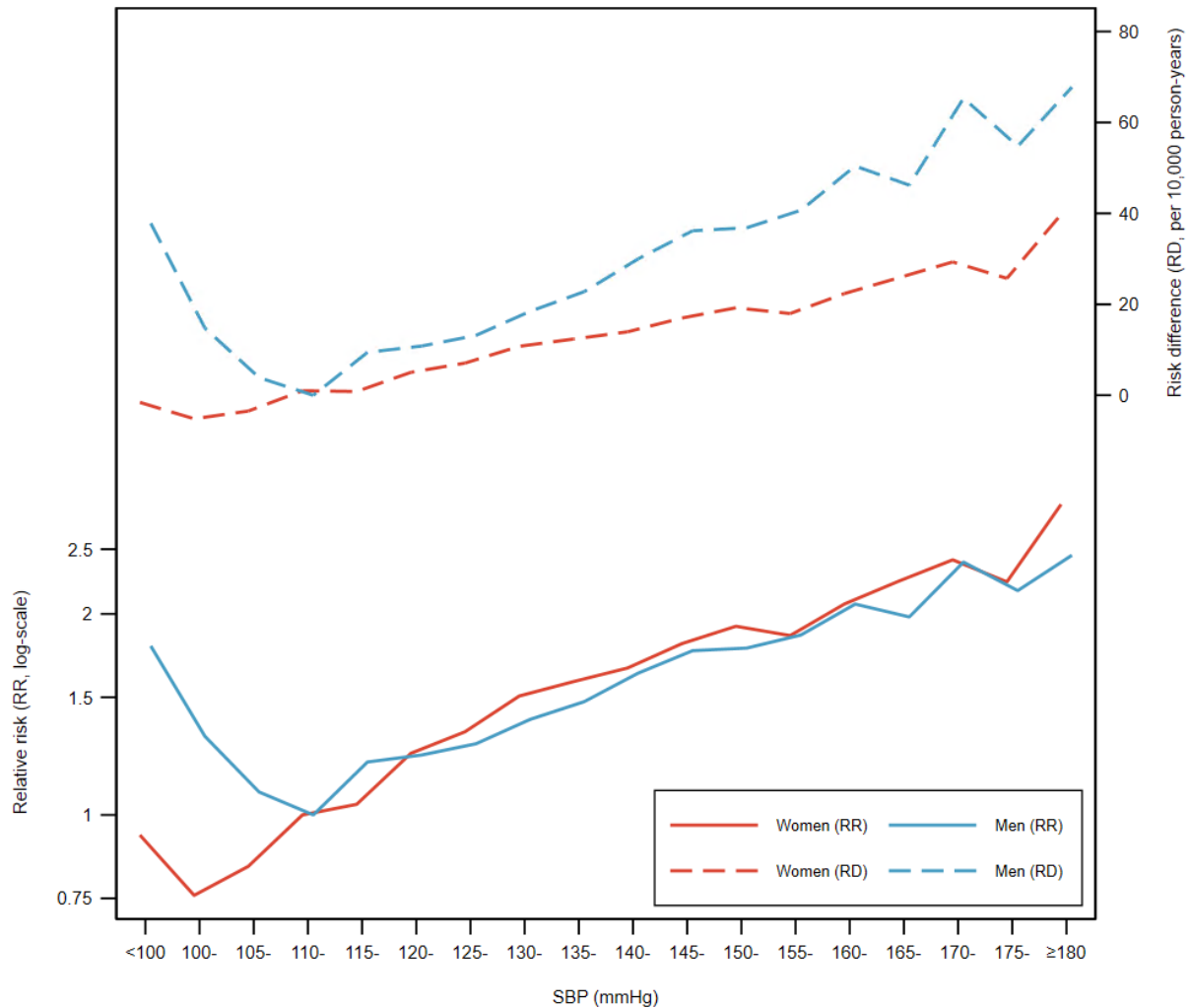
586

587 **Figure 4. Sex-specific relative risks relating blood pressure level to cardiovascular disease by sex and age group.** Forest

588 plots showing sex and age-specific RRs relating continuous blood pressure and hypertension status to incident cardiovascular

589 disease in women (red) and men (blue). Horizontal lines indicate corresponding 95% confidence intervals. CI = confidence interval;

590 DBP = diastolic blood pressure; mmHg = millimeters of mercury; SBP = systolic blood pressure; RR = relative risk.



591

592 **Figure 5. Sex-specific risk differences and relative risks relating systolic blood**

593 **pressure to incident cardiovascular disease.** Line graph showing age-adjusted

594 sex-specific RDs per 10,000 person-years (dashed lines) and RRs (solid lines) for

595 incident cardiovascular disease across categories of SBP in women (red) and men

596 (blue). The reference category for SBP was 110-115 mmHg in both sexes

597 separately. DBP = diastolic blood pressure; mmHg = millimeters of mercury; RD =

598 risk difference; RR = relative risk; SBP = systolic blood pressure.