

1 **A randomized controlled trial of postbiotic administration during antibiotic treatment**
2 **increases microbiome diversity and enriches health associated taxa.**

3 Jonas Schluter^{1-4*}, Fanny Matheis¹, Wataru Ebina^{1,3}, William Jogle^{1,2}, Alexis P. Sullivan¹, Kelly
4 Gordon⁴, Elbert Fanega de la Cruz⁵, Mary E Victory-Hays⁵, Mary Joan Heinly⁵, Catherine S.
5 Diefenbach³, Jonathan U. Peled^{4,6,7}, Kevin R. Foster^{4,8,9}, Aubrey Levitt⁴, Eric McLaughlin^{4,6}

6
7 ¹ Institute for Systems Genetics, New York University Grossman School of Medicine, New York,
8 NY, USA

9 ² Department of Microbiology, New York University Grossman School of Medicine, New York,
10 NY, USA

11 ³ Laura and Isaac Perlmutter Cancer Center, New York University Grossman School of Medicine,
12 New York, NY, USA

13 ⁴ Postbiotics Plus Research, Houston, TX, USA

14 ⁵ Patients Emergency Room & Hospital 10133 I-10, Baytown, TX, USA

15 ⁶ Adult Bone Marrow Transplantation Service, Department of Medicine, Memorial Sloan
16 Kettering Cancer Center, New York, NY, USA

17 ⁷ Weill Cornell Medical College, New York, NY, USA

18 ⁸ Department of Biology, University of Oxford; Oxford, UK

19 ⁹ Department of Biochemistry, University of Oxford; Oxford, UK

20 ***) correspondence: jonas.schluter@nyulangone.org**

- 21
- 22 • Postbiotic administration during antibiotic treatment increases bacterial alpha diversity
 - 23 • Characteristic bacterial signatures are associated with postbiotic administration
 - 24 • Health-associated taxa are enriched and disease-associated taxa are reduced by postbiotic
25 treatment

26
27

28 **Author contributions**

29 AL and EM conceived of the trial, with support by JS. AL, EM, oversaw and conducted the trial,
30 with support by KG, EFC, MEVH, and MJH. JS conducted the analyses and wrote the
31 manuscript with support by CSD, WE, FM, APS, and JUP. JS, FM, WE, WJ, KRF and JUP
32 analyzed and interpreted the results. All authors read and commented on the manuscript.

33

34 **Acknowledgements**

35 JS reports funding from the National Institutes of Health (NIH) grants DP2 AI164318-01, and
36 R01CA269617. FM is supported by a Helen Hay Whitney Fellowship. JUP reports funding from
37 NHLBI NIH Award K08HL143189, the MSKCC Cancer Center Core Grant NCI P30 CA008748.
38 We would like to thank Kate Markey for comments and discussion of the manuscript.

39

40 **Conflict of Interest Disclosure**

41 AL is CEO of Postbiotics Plus Research. AL and JS are co-founders of Postbiotics Plus Research.
42 AL, JS, EL, KRF, JUP hold equity in Postbiotics Plus Research. JUP reports research funding,
43 intellectual property fees, and travel reimbursement from Seres Therapeutics, and consulting fees
44 from DaVolterra, CSL Behring, and from MaaT Pharma. JUP has filed intellectual property
45 applications related to the microbiome (reference numbers #62/843,849, #62/977,908, and
46 #15/756,845). Memorial Sloan Kettering Cancer Center (MSK) has financial interests relative to
47 Seres Therapeutics. AL and JS have filed intellectual property applications related to the
48 microbiome (reference numbers #63/299,607). JUP and KRF serve on an Advisory board of
49 Postbiotics Plus Research. JS serves on an Advisory board and holds equity of Jona Health.

50 **Abstract**

51 Antibiotic-induced microbiome injury, defined as a reduction of ecological diversity and obligate
52 anaerobe taxa, is associated with negative health outcomes in hospitalized patients, and healthy
53 individuals who received antibiotics in the past are at higher risk for autoimmune diseases. No
54 interventions are currently available that effectively target the microbial ecosystem in the gut to
55 prevent this negative collateral damage of antibiotics. Here, we present the results from a single-
56 center, randomized placebo-controlled trial involving 32 patients who received an oral,
57 fermentation-derived postbiotic alongside oral antibiotic therapy for gastrointestinal (GI)-
58 unrelated infections. Postbiotics comprise complex mixtures of metabolites produced by bacteria
59 during fermentation and other processes, which can mediate microbial ecology. Bacterial
60 ecosystem alpha diversity, quantified by the inverse Simpson index, during the end of the
61 antibiotic course was significantly higher (+40%) across the 16 postbiotic-treated patients
62 compared with the 16 patients who received a placebo, and the postbiotic was well-tolerated.
63 Secondary analyses of 157 stool samples collected longitudinally revealed that the increased
64 diversity was driven by enrichment in health-associated microbial genera: obligate anaerobe
65 Firmicutes, in particular taxa belonging to the Lachnospiraceae family, were higher in treated
66 patients; conversely, *Escherichia/Shigella* abundances, which comprise pathobionts and
67 antimicrobial-resistant strains, were reduced in postbiotic-treated patients at the end of their
68 antibiotic course and up to 10 days later. Taken together, these results indicate that postbiotic co-
69 administration during antibiotic therapy could support a health-associated gut microbiome
70 community and may reduce antibiotic-induced microbiome injury.

71

72 **Introduction / Background**

73 Antibiotic therapy is the most effective treatment to fight bacterial infections and indispensable
74 in modern medicine; it can cure mild disease and save lives in severe cases of bacteremia¹, organ
75 invasion and sepsis². Recently, however, evidence has accumulated that oral antibiotic treatment
76 may collaterally injure the human microbiome^{3–11}. Antibiotics may interfere with commensal
77 bacterial growth, or can kill health-associated bacterial populations^{3,9}, a phenomenon that may
78 have been vastly underestimated³. Such disruption of the commensal microbial ecosystem can
79 persist for months following antibiotic exposure⁷ and is seen in otherwise healthy individuals¹²
80 as well as severely immunocompromised, hospitalized patients who, in some instances, lose
81 most of the normally resident bacteria^{8–11}. Clearance of the normal flora can enable persistent
82 colonization by pathogens, e.g., *Clostridioides difficile*, and cause recurrent, difficult-to-cure,
83 infections^{13,14}.

84 Antibiotic-induced interference with bacterial reproduction and killing of gut bacterial
85 populations lead to shifts in the gut microbiome ecosystem that can be characterized by a decline
86 in alpha diversity^{9,10,15}. Alpha diversity metrics are summary measures quantifying the ecological
87 composition of a microbiome sample; they may capture the number of taxonomic groups (e.g.
88 more taxa increase diversity) and their abundance distributions (e.g. more evenly distributed
89 taxon abundances increase diversity)¹⁶. Therefore, they have been used to quantify microbiome
90 injury at the ecosystem level¹⁷. Notably, antibiotic use and loss of bacterial microbiome alpha
91 diversity have been associated with health risks, including higher mortality in hematopoietic
92 stem cell transplantation^{18,19}, translocation of microorganisms from the gut into the bloodstream
93 (often resulting in bacteremia and sepsis) in immunocompromised patient populations^{10,11,15,20,21},
94 increased risk for inflammatory bowel disease²² and severity of autoimmune and allergic
95 diseases^{23–27}. Furthermore, loss of bacterial diversity can affect cross-kingdom interactions:
96 depletion of bacterial competitors may allow for fungal species to expand²⁸, and fungal
97 expansions were associated with increased risk of fungal bloodstream infections in cancer
98 patients¹⁵ as well as fungal urogenital infections in otherwise healthy women²⁹. Recently,
99 antibiotic exposure has been associated with worse response to cancer immunotherapies^{30–34}, and
100 direct links between perturbation of the microbiome and human immune system modulation are
101 emerging^{35–37}.

102 A diverse microbiome, predominantly populated by obligate anaerobe taxa, is thus
103 associated with good health. As a result, means to restore the microbiome following antibiotic
104 exposure are much sought after. Autologous fecal microbiota transplantation (auto-FMT) can
105 recover antibiotic-depleted bacteria using fecal materials harvested and stored prior to
106 treatment³⁸. Heterologous FMTs with material from healthy donors (allo-FMT) have shown
107 promising results in improving inflammatory bowel disease³⁹, response to immune therapy⁴⁰, and
108 successfully reduced *C. difficile* abundances and recurrence^{41,42}. FMTs, however, come with
109 risks⁴³: antimicrobial-resistant strains are prevalent in the microbiome¹¹ and can sometimes cause
110 life-threatening complications during FMT⁴⁴. Furthermore, matching donor to recipients for
111 optimal engraftment remains an unsolved challenge⁴⁵. Nevertheless, recently, the U.S. Food and
112 Drug Administration has approved two FMT-based therapies: a rectally administered single dose
113 of prepared stool from healthy donors and a fecal microbiota-based oral treatment, both to
114 prevent the recurrence of *C. difficile* infection^{46,47}. In addition to large community transfers via
115 FMT, administration of selected live microbial species, termed probiotics, have been established,
116 albeit with conflicting data on efficacy^{48,49}, and variable recipient colonization^{50,51}. Whilst
117 probiotics are generally assumed to be safe, their use has been associated with adverse
118 outcomes⁴⁸, such as bacteremia⁵², fungemia⁵³, and bowel ischemia⁴⁹ especially in
119 immunocompromised and critically ill patients. Facilitation of probiotic colonization following
120 antibiotic-induced depletion of recipient commensals can also lead to persistent dysbiosis and
121 delay recovery of the pretreatment microbiome⁵⁴. These shortcomings of probiotics highlight the
122 potential benefit of modulating resident commensal microbial ecology without the addition of
123 new microbial strains and species towards safe and robust microbe-targeted therapies. Aside
124 from live therapeutics, one potential alternative is the use of prebiotics. These are substances
125 intended to provide nutrients to specific, desired microbial populations, and have recently been
126 shown to have some effects on microbiome communities³⁷. Surprisingly, however, a beneficial,
127 anti-inflammatory effect was observed resulting from increased consumption of fermented
128 foods³⁷. Thus, products of fermentation may offer a novel therapeutic avenue to manipulate the
129 microbiome.

130 As such, an emerging alternative to live therapeutics, which we explore here, is the use of
131 postbiotics. Postbiotics is an umbrella term that comprises complex mixtures of metabolites

132 produced by bacteria for example during fermentation, as well as cell wall components and other
133 dead cell components (as well as some potentially viable cells⁵⁵).

134 Emerging pre-clinical and clinical studies indicate health-beneficial effects of
135 postbiotics^{37,56,57}. Thus, postbiotics may offer a safe novel therapeutic avenue to target the
136 microbiome. In particular, we hypothesize that reduction of antibiotic-induced microbiome
137 damage could prevent antibiotic-induced impairment of novel immunotherapies and health
138 sequelae^{30,58}. However, it is not yet known if postbiotics can reduce microbiome diversity loss
139 during antibiotic treatment. Here, we describe the results of a single-center randomized
140 controlled trial to assess the ability of a fermentation-derived postbiotic to prevent antibiotic-
141 induced injury to the commensal microbiome in patients receiving oral antibiotics. Following a
142 course of antibiotics, we collected stool samples at five timepoints and profiled the composition
143 of bacterial populations. Our data indicate that treatment with a postbiotic during a course of oral
144 antibiotics supports gut microbial ecosystem stability and health-associated taxa.

145

146 **Results**

147 **Overview of study design and intervention**

148 A single-center, randomized placebo-controlled trial of postbiotic treatment (T, n=16) versus
149 placebo (C, n=16) was conducted to measure bacterial alpha diversity as a primary endpoint at
150 the end and directly after finishing a course of oral antibiotics. The goal was to determine
151 feasibility, safety, and a preliminary efficacy assessment of the procedure for prevention of
152 medication-induced injury of the gut microbiota (Study title: Randomized controlled trial of
153 PBP-GP-22 to affect microbiome composition; <https://www.isrctn.com>; trial registration
154 ISRCTN30327931). Otherwise healthy ambulatory adult patients (**Table 1**) presenting to a single
155 clinical site in Houston, Texas, between 05 and 06/2018 for non-gastrointestinal infections were
156 recruited. After giving informed consent, patients were provided with take-home stool sample
157 collection kits, a supply of a commercially available probiotic, and a supply of the placebo
158 (control, C) or postbiotic (treatment, T) to be taken during and ten days beyond the antibiotic
159 course (administered antibiotics are listed in **Table S1**) along with the commercial probiotic and
160 their standard-therapy antibiotic (**Figure 1, S1, CONSORT report**⁵⁹). We chose to include the
161 probiotic background, which included six strains of *Lactobacillus* and *Bifidobacterium*, because
162 it was the standard recommendation by the participating physicians when administering

163 antibiotics. Moreover, by including an existing treatment in our study, our design represented a
 164 relatively stringent test of the ability of a postbiotic to further improve outcomes. A total of 157
 165 stool samples were collected longitudinally, for up to five timepoints (S1-S5) relative to the end
 166 of a full course of prescribed antibiotics per patient (**Figure 1A**).

167 It was hypothesized that microbiome injury would be maximal at the end of a completed
 168 course of antibiotics. Therefore, the primary endpoint was set as bacterial alpha diversity,
 169 measured by the inverse Simpson index on three timepoints at the end of the antibiotic course: on
 170 the day prior to finishing the antibiotic treatment (S1), directly after completing the antibiotic (S2)
 171 and one day thereafter (S3). Among patients who entered the study, stool sampling rates were
 172 high, with only a single sample from S3 missing in the final analysis set (FAS, target participant
 173 number: 25, FAS: 32, **Figure 1B**). Patients were given a phone number to call to report any side
 174 effects, and were contacted via text messages prior to fecal sample collection; there were no
 175 grade 3 or higher side effects reported (**Table S2**).

176
 177 **Table 1:** Patient characteristics and indications by treatment arm, with statistical tests for *p* value
 178 calculations indicated.

Characteristic		Control	Treatment	<i>p</i> value
Age		39, [20,60]	45, [20, 64]	0.95 (t-test)
Sex	Female	10	8	0.72 (Chi2)
	Male	6	8	
Disease				
	Sinusitis	5	3	
	Cellulitis	2	1	
	Kidney infection/UTI	1	0	
	Abscess	1	0	
	Ear infection	2	0	
	Cyst	1	0	
	Pharyngitis/Strep	1	6	
	Bronchitis	1	2	
	Laceration	0	1	
	Toothache	0	1	
	Other	2	2	

180 **Bacterial alpha diversity at the end of an antibiotic course is high in patients receiving the**
181 **postbiotic**

182 Microbiome profiling by amplification and sequencing of the V4 region of the 16S rRNA gene
183 was performed on DNA collected from 157 samples. Bacterial alpha diversity measured at the
184 end of the antibiotic treatment (S2) was significantly higher in postbiotic-treated patients
185 compared with placebo recipients for different alpha diversity metrics (**Figure 1C**, Shannon:
186 +24%, $p=0.046$; Simpson: +19%, $p=0.048$; inverse Simpson: +43%, $p=0.056$, t-test). Time series
187 analysis³⁸ of longitudinally collected samples (**Figure S2**) showed that postbiotic-treated patients
188 had significantly higher alpha diversity during the end phase of their antibiotic treatment (**Figure**
189 **1D**, $p=0.037$, linear mixed effects model). Together, these results indicate that addition of this
190 postbiotic to an orally-administered antibiotic course is clinically feasible, well-tolerated, and
191 significantly increased gut microbial alpha-diversity.

192

193 **Postbiotic treatment is associated with characteristic bacterial signatures**

194 We next sought to analyze differences between microbial ecosystems in treated vs control
195 patients at a higher resolution than resolved by alpha diversity metrics. For this, we first
196 visualized the individual patients' compositional time courses by plotting the relative abundances
197 of the most abundant bacterial families (**Figure 2A**), which indicated compositional variation
198 across patients and changes over time in several individuals. To analyze compositional
199 variability, we next performed a principal coordinate analysis (PCoA) on sample-by-sample
200 Bray-Curtis distances calculated on operational taxonomic units' (OTUs) relative abundances
201 (**Figure 2B-E**). Samples from patients of either sex localized across the projected bacterial
202 compositions (**Figure 2B**). In most samples, obligate anaerobe Bacteroidetes taxa represented
203 the most abundant bacterial families (**Figure 2C**), whereas samples from both experimental arms
204 contained only low relative abundances of the genera corresponding to the probiotics taken by all
205 patients (median relative genus abundance: *Bifidobacterium* [C: $3.9e-4$, T: $4.3e-4$], *Lactobacillus*
206 [C: $1e-4$, T: $0.9e-4$]; **Figure S3**). Consecutive samples from the same patient tended to localize
207 near one another, with significantly lower intra- than inter-patient variability during the transition
208 from antibiotics into the post-antibiotic period (**Figure 2D**), even though the observed
209 microbiome dynamics in several patients spanned wide regions of the compositional space.
210 While samples from treated and control patients localized across the PCoA space, a statistical

211 analysis indicated that the samples from treated patients varied consistently in their composition
212 from those observed in control patient samples (**Figure 2E**), which suggested characteristic gut
213 bacterial communities in treated patients.

214

215 **Postbiotic treatment is associated with an enrichment in health- and a reduction in disease-** 216 **associated taxa**

217 To analyze which taxa were consistently higher in treated patients or lower alongside the reduced
218 diversity in control patients, we compared the relative abundance profiles between the two
219 patient groups directly after finishing the antibiotic course (S2), and over time (S1-S3). To
220 account for the compositional nature of 16S relative abundance data, we calculated the centered-
221 log ratio (CLR) transformation of relative taxon abundances across all samples. To reduce
222 sparsity of the OTU-level data, we aggregated relative abundances at the phylum, family or
223 genus levels prior to CLR transformation.

224 Statistical comparison of the CLR-transformed phylum relative abundances directly after
225 finishing the antibiotic course (S2) revealed a significantly higher abundance of Firmicutes
226 among treated patients (**Figure 3A**, p-value=0.002, q-value<0.05, 0.1 FDR). At higher
227 taxonomic resolutions, we analyzed the 10 most abundant bacterial families and 20 most
228 abundant genera after CLR-transformation: Lachnospiraceae and Bacteroidaceae (family-level
229 analysis), and *Roseburia*, *Bacteroides*, and *Ruminiclostridium* 5 (genus-level analysis) were
230 enriched in treated patients at S2 (**Figure 3B, C**). However, the observed taxon enrichments,
231 while significant in univariate analyses, did not remain significant after correcting for multiple
232 hypotheses, with the exception of the observed enrichment of Lachnospiraceae in treated patients
233 (univariate p-value=0.004, q<0.05, 0.1 FDR), which remained significant.

234 We next analyzed CLR-transformed genus abundances in samples S1 to S3. Using a
235 more stringent false discovery rate (0.05 FDR) as well as a minimal effect size cutoff (0.5),
236 revealed several genera significantly enriched in treated patients, including *Anaerostipes*,
237 *Eubacterium coprostanoligenes* group, *Fusicantennibacter*, and *Roseburia*, and significantly
238 reduced genera in treated patients, including *Fusobacterium* and *Escherichia/Shigella* (**Figure**
239 **3D, S4**). We tested the 13 differentially abundant genera in a mixed effects model (**Figure 3E**),
240 which confirmed the associations found in the univariate pooled analysis screen (**Figure 3D**).
241 Furthermore, consistent with these results, we found similar associations when performing

242 multivariate analyses using regularized regression approaches (**Figure S5**), which confirmed a
243 trend towards enrichment of commensal obligate anaerobe genera among treated patients. We
244 also compared the abundances of anaerobe taxa discussed as immunomodulatory in the context
245 of cancer therapies^{31,32,35}, and found higher abundances of Lachnospiraceae, which comprise
246 *Faecalibacterium*, Ruminococcaceae, which comprise *Ruminococcus*, and Verrucomicrobiaceae,
247 which comprise *Akkermansia*, in treated patients (**Figure S6**). Interestingly, this enrichment of
248 health-associated anaerobe taxa and concurrent lower levels of facultative anaerobe, pathobiont-
249 comprising taxa in treated patients appeared to persist beyond the immediate end of the antibiotic
250 exposure (**Figure S7**), even though alpha diversity in control patients had already approached
251 similar levels to treated patients ten days after the antibiotic course ended (**Figure S8**). In
252 particular, facultative-anaerobe gamma-proteobacteria of the *Escherichia/Shigella* genus were
253 reduced in treated patients even 10 days after finishing their antibiotic course (**Figure S7B**).
254 Taken together, these results support an enrichment of a health-associated microbial community
255 in patients treated with a postbiotic during their antibiotic course.

256

257 **Discussion**

258 We here presented results from a single center randomized placebo-controlled trial to assess the
259 protective effect of a postbiotic adjuvant on microbiome diversity during antibiotic therapy.
260 Collateral injury to the resident gut microbiota caused by antibiotics has been described as a loss
261 of bacterial ecosystem diversity¹⁸, loss of commensal microbial taxa^{9,15}, and increase of
262 pathobionts, which can comprise antibiotic-resistant species¹¹. The enrolled patients were
263 ambulatory and treated with oral antibiotics for non-gastrointestinal infections. Thus, the patient
264 cohort studied here were at a lower risk for microbiome injury-induced complications than for
265 example blood cancer patients^{11,15,18}. Among those higher-risk patients, overall survival is
266 statistically associated with antibiotic induced loss of diversity¹⁸, and response to chimeric
267 antigen receptor T cell therapy is negatively associated with antibiotic exposure^{30,34,58}. In
268 hospitalized COVID-19 patients, another high-risk patient group, a combination of antibiotics
269 and viral infection were found to predispose patients to gut born bacteremia¹⁰. Nevertheless,
270 even in otherwise healthy individuals such as were studied here, post-antibiotic complications
271 such as diarrhoea⁶⁰, post-antibiotic *Clostridioides difficile* infection⁶¹, or vaginal candidiasis⁶² are
272 common, and selection for antimicrobial resistant strains (AMR) in the gut microbiome may

273 pose a potential health risk during future therapies. Therefore, reducing the negative collateral
274 impact of antibiotics on the microbiome constitutes a critical unmet need.

275 Our results indicate that microbiome injury is lower when co-administering an oral
276 postbiotic alongside the oral antibiotic: bacterial alpha diversity was significantly higher at the
277 end of an antibiotic course in patients who received the postbiotic instead of the placebo, and this
278 increased diversity was driven by commensal taxa. Health-associated obligate anaerobe
279 organisms were higher in treated patients: *Fusicantenibacter*, which is depleted in rheumatoid
280 arthritis patients⁶³, short-chain fatty acid-producing *Roseburia*, one of the most abundant genera
281 in the healthy gut microbiome⁶⁴, the butyrogenic *Anaerostipes* genus, which comprises lactate-
282 consuming species⁶⁵, and the *Eubacterium coprostanoligenes* group, which has been
283 hypothesized to be involved in beneficial fat metabolism by reducing cholesterol⁶⁶. Conversely,
284 *Escherichia/Shigella*, a genus of gram negative facultative anaerobe species that comprise
285 multiple antibiotic-resistant strains and pathobionts which can cause secondary bacteremia when
286 translocating across a weakened gut barrier^{10,11}, were significantly lower in treated than in
287 control patients. Interesting, we also observed that *Fusobacterium*, an obligate anaerobe taxon,
288 was significantly lower in treated patients. Its predominant species, *F. nucleatum*, is commonly
289 found in the oral microbiome and associated with the development of colorectal cancer when
290 abundant in the gut^{67,68}. It is plausible that the higher diversity of commensal gut bacteria in
291 treated patients improved colonization resistance and reduced gut colonization of *F. nucleatum*
292 when swallowed. Furthermore, the higher diversity of commensal organisms may have
293 suppressed the opportunistic expansion of *Escherichia/Shigella* observed in control patients via
294 competitive exclusion^{11,69-71}.

295 Limitations of the study include that both treatment arms received a commercial probiotic;
296 however, low abundances of the taxa from the probiotics in both treatment arms indicated that
297 this had no influence on the diversity differences observed between treatment arms. Nevertheless,
298 future studies are warranted to validate the efficacy of the oral postbiotic outside of the context
299 of concurrent probiotic administration. Furthermore, due to the enrollment at an urgent care
300 clinic where patients were instructed to start their treatment immediately, no baseline stool
301 sample prior to antibiotics was collected. However, we speculate that the impact of antibiotics on
302 the microbiome are maximal at the end of an antibiotic course, and that thus the increase in
303 diversity observed among treated patients could reflect protection of the commensal microbiome.

304 This is a plausible scenario because of the enrichment of commensal taxa in the microbiome of
305 patients treated with the postbiotic, which did not include these taxa. The study results, while
306 significant and of considerable magnitude, are based on a small cohort and the direct impact on
307 patients' health was not assessed in this trial, which focused on microbiome diversity as a
308 primary outcome. Additional studies are now warranted to validate the herein described
309 beneficial impact of postbiotic treatment on the microbiome and assess if the stabilization of the
310 microbiome translates into a patient health benefit.

311 Recently, consumption of fermented plant-based foods were described to have a
312 beneficial effect on the microbiome and immune system³⁷. The postbiotic under investigation is a
313 complex biologic product derived from the fermentation of medicinal plants by generally
314 regarded as safe (GRAS) bacterial species. Unlike in fermented foods, manufacturing of
315 postbiotics generally includes a dedicated inactivation step that reduces live cell counts⁵⁵, and
316 therefore, they are assumed to have a generally favorable safety profile over live therapeutic
317 based approaches. For the manufacturing of the postbiotic used in this trial, a fermentation
318 process by specific species of *Lactobacillus* and *Bifidobacterium* was used, which represent
319 major taxa commonly present during the assembly of the infant microbiome⁷². While the
320 mechanism of action of the observed protection of gut microbiome diversity is not fully
321 understood, we hypothesize that bacterial metabolites of these species, their products of
322 secondary metabolism and signaling molecules may support or elicit competitive responses
323 within resident members of the commensal adult microbiome, which have evolved to
324 ecologically succeed early colonizers of the gut microbiome⁷³, increasing their resilience to
325 external perturbations⁷⁴.

326 In conclusion, here we have presented evidence that co-administering a fermentation
327 derived postbiotic can increase gut microbiome diversity during antibiotic treatments. The
328 increased diversity was associated with higher abundances of health-associated bacterial taxa,
329 while genera comprising pathobionts were lower among postbiotic treated patients.

330 **Methods**

331 *Human subjects*

332 **Table 1** reports metadata, including age and sex, corresponding to the 32 healthy adult subjects
333 enrolled in a single site double-blind randomized controlled study (trial registration ID:
334 ISRCTN30327931). This study was reviewed and approved by New England Institutional
335 Review Board, an independent IRB located in Needham, MA. All subjects were provided with
336 an explanation of the study and gave informed consent in writing prior to the start of their
337 participation in the study.

338

339 *Human subject study methods*

340 Fifty-one ambulatory adult subjects were initially evaluated for eligibility (see inclusion and
341 exclusion criteria used to evaluate subject suitability listed below), one was not eligible. Fifty of
342 the subjects were then enrolled in a single site double-blind interventional study with a
343 randomized-controlled design to test the hypothesis that patients receiving an oral postbiotic
344 would present with higher bacterial alpha diversity, measured by the inverse Simpson index,
345 during three time points at the end of an antibiotic course than patients receiving a placebo
346 control. Analyzed timepoints were: the final day of antibiotics, the first day after completing the
347 antibiotics course, and the second day after completing the antibiotics course. Analysis was
348 performed by time series analysis that accounts for repeated measurements and uses time as
349 categorical predictors, as done before^{38,75}. This study was reviewed and approved by New
350 England Institutional Review Board, an independent IRB located in Needham, MA. Eligibility
351 for enrollment was determined by the following inclusion and exclusion criteria:

352

353 Inclusion criteria:

- 354 • Otherwise healthy adults with a body mass index (BMI) (18-28 kg/m²)
- 355 • Patients are prescribed a course of antibiotics with a duration of at least 5 days
- 356 • Patients have not had another course of antibiotics in the past 6 months
- 357 • Patients are willing to cease taking any other supplements

358 Exclusion criteria:

- 359 • patients suffering from gut related illness (regular and severe constipation, diarrhea,
360 inflammatory bowel disorder or inflammatory bowel disease).

- 361 • patients who usually experience severe diarrhea (e.g. for more than 3 days) following
362 antibiotic treatment.
- 363 • patients who have a compromised immune system, are taking any immune modulators or
364 have an autoimmune disorder.
- 365 • patients who are diabetic or take any blood pressure medication.
- 366 • patients who have any known allergies to the probiotics, or the herbs and bacteria used in
367 the postbiotic formula.
- 368 • patients who are pregnant or nursing.

369

370 The double-blind randomization scheme for this study was as follows. Patients were given an
371 unmarked box (the study kit) containing stool sample materials, and either control or treatment
372 materials neither of which were marked. To blind study coordinators, boxes had been shuffled
373 after assembly of all study kits, prior to the study. Kits contained barcodes that allowed
374 identification of participants' treatment arm after the participant handed over their samples. One
375 of the subjects evaluated for participation was ineligible due to not meeting the inclusion criteria.
376 Fifty subjects received the study kits. Seventeen subjects withdrew consent during follow-up; six
377 and twelve subjects from the control and the treatment arm, respectively, without explanation.
378 One patient from the treatment arm was removed from the study due to a second antibiotic
379 prescription which was not declared during enrolment.

380 Treatment regimens were as follows. In their study kit, the control arm received a
381 commercially available probiotic in unmarked capsules and a resistant starch placebo in an
382 unmarked capsule; the treatment arm received the same commercially available probiotic in
383 unmarked capsules and the fermentation-derived postbiotic in unmarked capsules. Subjects were
384 instructed to take one capsule of each every day during their antibiotic course and for ten days
385 after finishing the antibiotic course.

386 Patients were given a phone number to call to report any side effects; no such phone calls
387 were received. Prior to the collection of each stool sample, study coordinators were checking in
388 with patients via text message to remind them of the sample collection and ask for side effects,
389 collectively presented in **Table 2**. Patients were contacted on study days 1,2,3,4 and 10, and
390 there were no grade 3 or higher side effects reported.

391

392 ***Eligibility criteria, ethical approval, and consent to participate***

393 This study protocol was approved by the institutional review board (IRB) number: 120180088,
394 trial registration ID: ISRCTN30327931. Otherwise healthy ambulatory adult patients (**Table 1**)
395 presenting to a clinic in Houston, Texas, between 05 and 06/2018 for non-gastrointestinal
396 infections were recruited. Participants were recruited by physicians. Onsite nurses, trained in
397 human subject research, reviewed the consent form with the potential participants and answered
398 any questions about the study and its potential risks. Informed consent was obtained from all
399 participants. Participants were compensated with a \$15 Amazon gift card per sample collected at
400 the end of the study. If a participant did not complete the study, they were not penalized and
401 rewarded for the samples they collected.

402

403 ***Sample collection***

404 After informed consent was obtained, participants were provided with 5 Diversigen OmniGene
405 Gut kits for stool collection at home, a kit which stabilized samples at room temperature for up to
406 60 days. Patient were handed a work sheet listing their expected samples, recorded the date of
407 sample collection, and shipped all samples in one batch. Samples were received and processed
408 by a specialized contract research organization, Diversigen, (Houston, Texas).

409

410 ***Postbiotic composition***

Component	Quantity in a Capsule	Function
Ashwagandha root (<i>Withania somnifera</i>) extract	139.75 mg	Active Ingredient: Co-fermented herb with <i>Lactobacillus</i> and <i>Bifidobacterium</i>
Elderberry fruit (<i>Sambucus nigra</i>) powder	143 mg	Active Ingredient: Co-fermented herb with <i>Lactobacillus</i> and <i>Bifidobacterium</i>
Astragalus root (<i>Astragalus membranaceus</i>)	139.75 mg	Active Ingredient: Co-fermented herb with <i>Lactobacillus</i> and <i>Bifidobacterium</i>
Red lentils	227.5 mg	Bulking agent, nitrogen source

411 ***DNA extraction and bacterial 16S rRNA gene sequencing***

412 DNA from human samples was extracted with PowerSoil Pro (Qiagen) on the QiaCube HT
413 (Qiagen), using Powerbead Pro (Qiagen) plates with 0.5mm and 0.1mm ceramic beads. All PCR
414 products were analyzed with the Agilent TapeStation for quality control and then pooled
415 equimolar and sequenced directly in the Illumina MiSeq platform using the 2x250 bp protocol.
416 Human samples were prepared with a protocol derived from 44, using KAPA HiFi Polymerase
417 to amplify the V4 region of the 16S rRNA gene. Libraries were sequenced on an Illumina MiSeq
418 using paired-end 2x250 reads and the MiSeq Reagent Kitv2. Sample processing and sequencing
419 were performed by Diversigen.

420

421 ***Bioinformatic processing and taxonomic assignment***

422 OTU tables were generated by Diversigen bioinformatics pipelines (detailed bioinformatic tools
423 and settings in **Supplementary Methods**). Briefly, Usearch v7.0 was used to process raw
424 sequencing reads, and taxonomy was assigned via the Silva database v128.

425

426 ***Statistical analyses***

427 Unless otherwise stated, statistical analyses were performed with Python 3, version 3.10.4 and R,
428 version 4.2.

429 We calculated the inverse Simpson (IVS) index from relative ASV abundances (p) with

430 N ASVs in a given sample, $IVS = \frac{1}{\sum_i^N p_i^2}$. Regression analyses were conducted using the

431 statsmodels package for the Python programming language, using the functions *ols* and *mixedlm*
432 for ordinary least squares and mixed effects modeling, respectively. Relevant code of primary
433 analyses and corresponding data tables are available in the supplementary materials.

434 To account for compositionality of the relative abundance data, we performed a centered
435 log-ratio (CLR) transformations at different taxonomic aggregation levels, i.e. separate CLR for
436 genus, family, and phylum abundances. While this does not remove compositionality related data
437 analysis challenges, CLR transformations are increasingly used to reduce negative covariance
438 biases in microbiome data. Regression models were implemented using the statsmodels (using
439 functions *ols* and *mixedlm*)⁷⁶ and penalized multiple variate regression models using the sklearn
440 packages (using the function *LogisticRegression*)⁷⁷ for the Python programming language, and
441 using the *nlme*⁷⁸ and *vegan*⁷⁹ library in R.

442 p values were adjusted as appropriate. A p -value <0.05 was considered significant after
443 adjustment for multiple comparisons where appropriate. Unless otherwise stated, significance
444 values are noted as follows: * $p < 0.05$, ** $p < 0.01$, *** $p < 0.001$.

445 Figure 1: Significance of differences in IVS were calculated using a mixed effects model
446 for repeated measures with time treated as a categorical variable^{38,75}; significance between arms
447 at individual timepoints was determined using two-sided t-tests.

448 Figure 2: Differences in sample-by-sample distances were calculated with the `adonis2`
449 function from the `vegan` library for the R programming language.

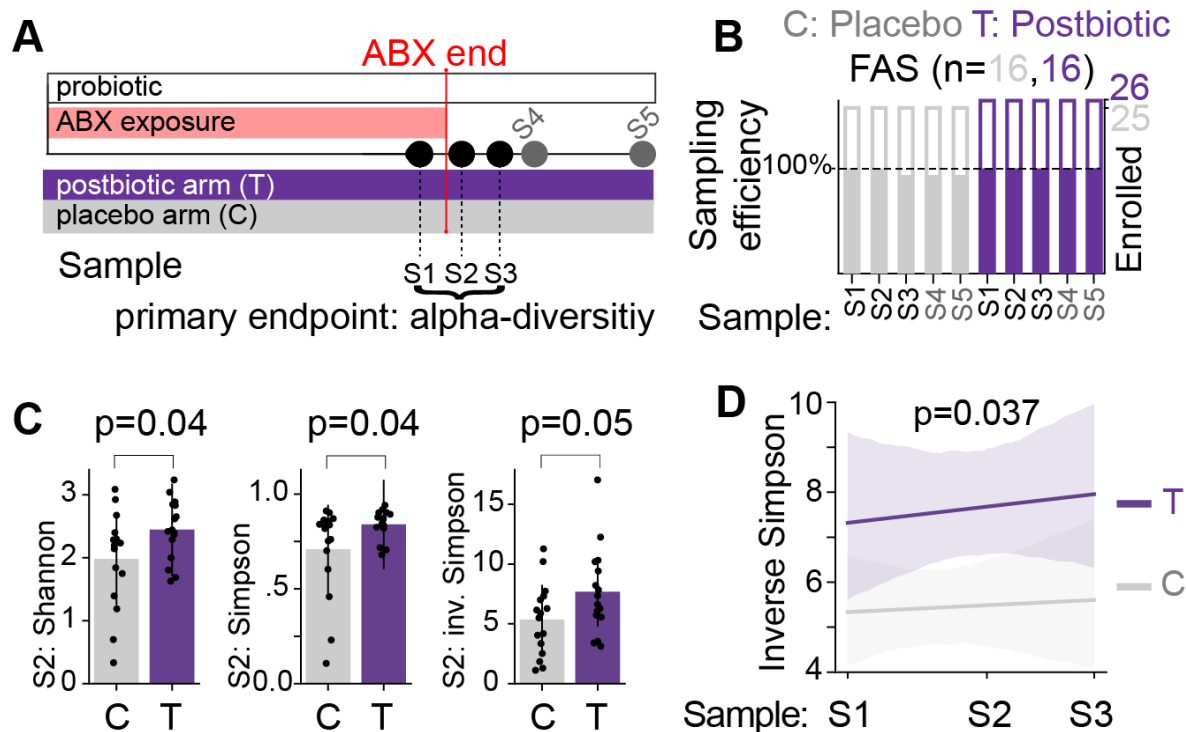
450 Figure 3: Single time points were analyzed with univariate linear models using the `ols`
451 function of the `statsmodels` package, multiple hypothesis correction was performed with the
452 Benjamin/Hochberg procedure using the `fdrcorrection` function of the `statsmodels.stats.multitest`
453 library for the Python programming language. The multivariate analysis of significant hits from
454 the univariate screen was performed with the `LogisticRegressionCV` class from the `scikit-learn`
455 package for the Python programming language.

456

457 ***Data availability***

458 Data, statistical test results, and relevant code to reproduce main analyses are available as
459 supplementary materials. The 16S rRNA gene sequencing results are available as supplementary
460 data files (**Table S3**). Raw sequencing reads are available on the sequencing read archive,
461 submission SUB13922145.

462 **Figures**



463

464

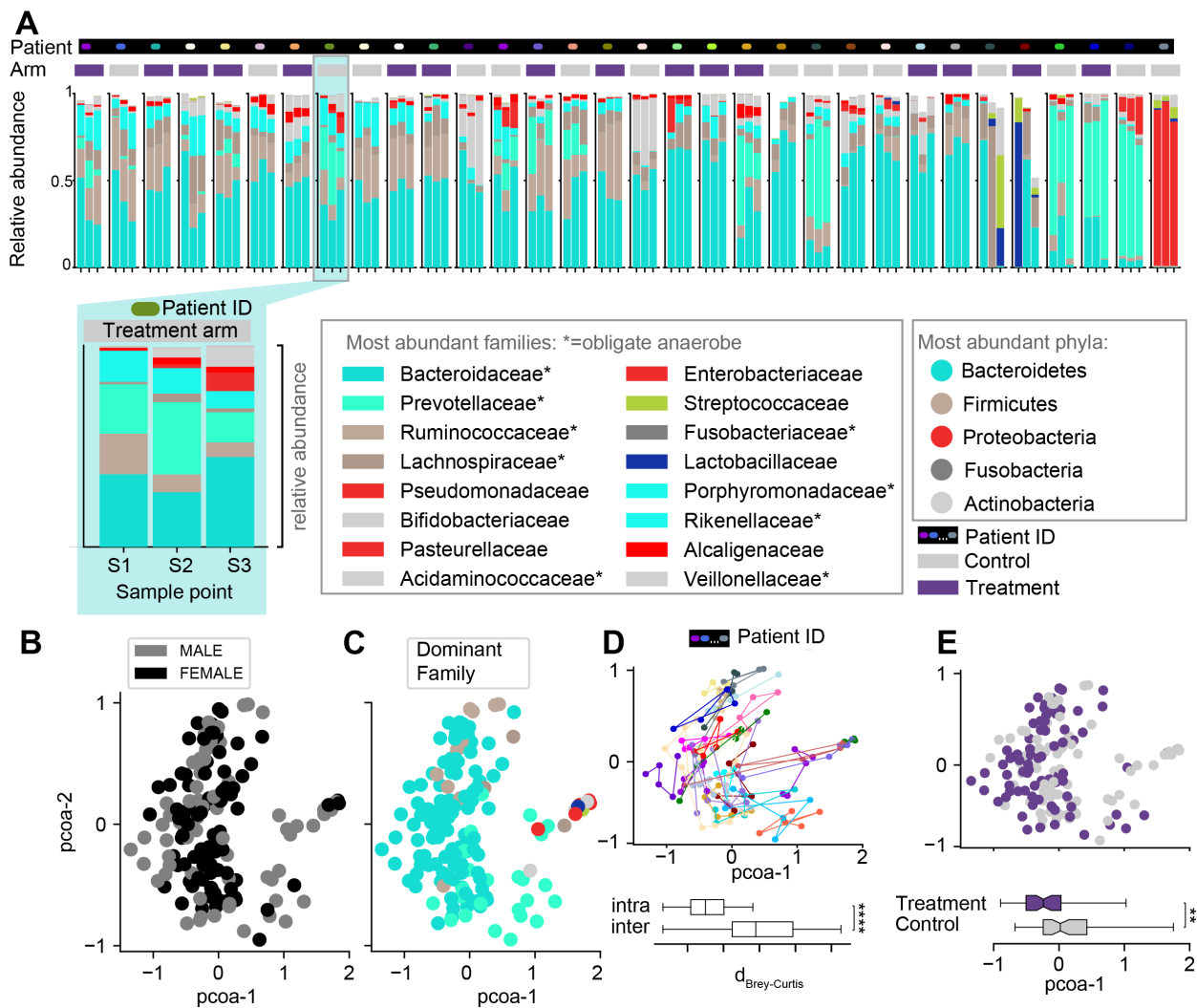
465 **Figure 1: Postbiotics significantly increased bacterial alpha diversity at the end of an**
 466 **antibiotic course. A)** Sample collection protocol and study design; primary endpoint of the trial
 467 was alpha-diversity (inverse Simpson index) during the end of the antibiotic course (S1-S3),
 468 additional endpoints were alpha-diversity (inverse Simpson) at later time points (S4, S5). **B)**
 469 Enrolment and sample collection efficiency in percent of planned vs obtained; Full Analysis Set,
 470 (FAS): 100%=16 samples per arm; cohort report in **Figure S1**. **C)** Alpha diversity directly after
 471 finishing the antibiotic course (S2, p-values from two-sided t-tests). **D)** Inverse Simpson alpha
 472 diversity across timepoints S1-S3 was significantly higher in treated (purple) than control (grey)
 473 patients, see also **Figure S2**; p-value from linear mixed effects model³⁸.

474

475

476

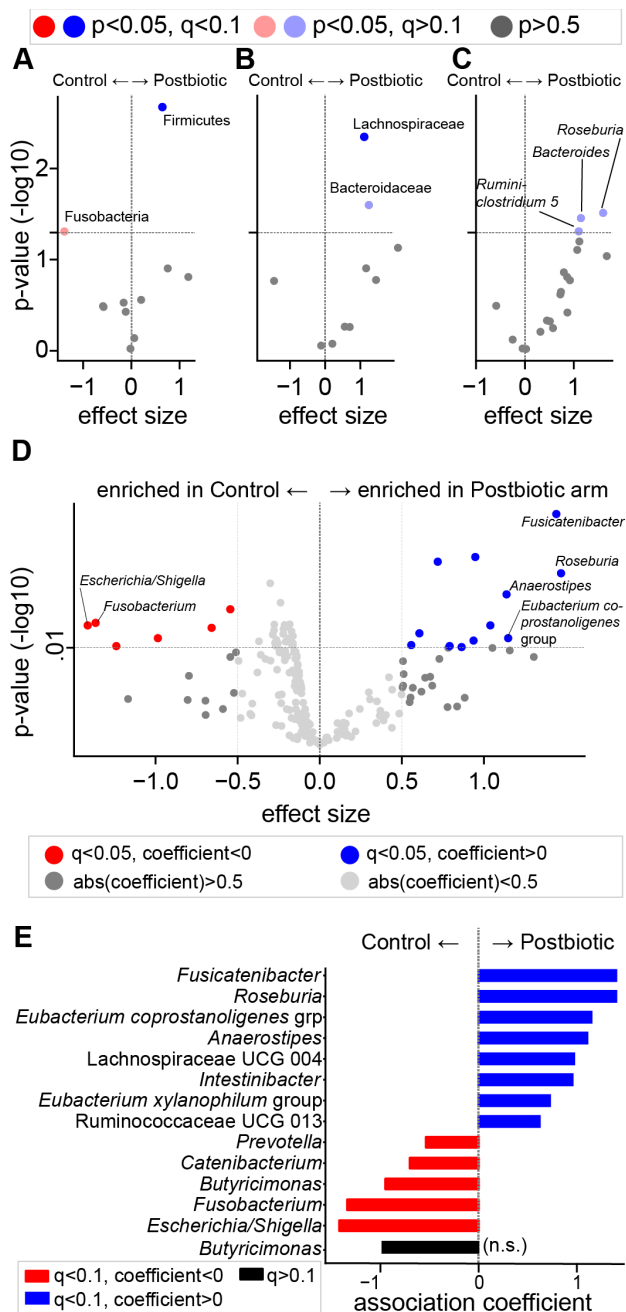
477



478

479 **Figure 2: Bacterial compositions in longitudinally collected fecal samples.** **A)** Bacterial family
 480 compositions in samples S1-S3 for each patient; families of identical higher taxonomic groups in similar
 481 colors, one patient time course enlarged. Patients are sorted by average alpha diversity across samples.
 482 Patient ID (colored dot on black background) and treatment arm (grey box: control, purple box: treatment)
 483 are indicated above the time courses. **B-E)** PCoA plots of bacterial relative abundances in all 157 samples,
 484 colored by sex (**B**), most abundant bacterial family per sample (**C**, colors as in **A**). **D)** Patients'
 485 compositional trajectories visualized on the PCoA plot (colors as in **A**), with boxplot showing intra- and
 486 inter-subject Brey-Curtis dissimilarities. **E)** PCoA labeled by treatment, with significant differences
 487 between the groups along the first principal coordinate indicated (**: $p < 0.01$, ****: $p < 10^{-4}$, two-sided t-
 488 test).

489



490

491 **Figure 3: Health-associated taxa are enriched in postbiotics treated patients.** A-C) Volcano plots of
 492 association coefficient effect sizes between CLR-transformed taxon abundances and treatment arm;
 493 control (left), treatment (right) in samples collected at the end of an antibiotic course (S2). Negative log₁₀-
 494 transformed p-values of association coefficients from 10 most abundant phyla (A), families (B), and 20
 495 most abundant genera (C); significant associations in color (light color: univariate p-value < 0.05, full
 496 color: q-value < 0.05, 0.1 FDR, Benjamin/Hochberg method). D) Volcano plot of associations between
 497 CLR-transformed relative genus abundances with treatment or control in samples S1-S3 (100 most
 498 abundant genera analyzed). E) Significant genera from D re-analyzed with a mixed effects model using
 499 random intercepts per patient to account for multiple samples per patient; colored bars indicate significant
 500 association coefficients (red: higher in control, blue: higher in treatment arm) after multiple hypothesis
 501 correction via the Benjamin/Hochberg method (FDR: 0.1, q < 0.05).

502 **Supplementary Material**

503

504 **Table S1: Antibiotic exposures by treatment arm**

505

Treatment	Antibiotic	n
T	Amoxicillin / Clavulanic acid	5
	Amoxicillin	2
	Amoxicillin / Clavulanic acid & Cefalexin	1
	Azithromycin	1
	Cefalexin	1
	Cefalexin / Trimethoprim / Sulfamethoxazole	1
	Ciprofloxacin	1
	Ciprofloxacin / Metronidazole	1
	Clindamycin	1
	Levofloxacin	1
	Penicillin	1
C	Amoxicillin / Clavulanic acid	7
	Amoxicillin	2
	Ciproflaxin / Metronidazole	1
	Ciprofloxacin	1
	Ciprofloxacin	1
	Clindamycin	1
	Trimethoprim / Sulfamethoxazole / Cefalexin	1
	Azithromycin	1
	Amoxicillin / Clavulanic acid & Clindamycin	1

506

507

508 **Table S2: Reported adverse events**

509

	Adverse Events	Severity	Related to Study
Control	Rash	Mild	Unlikely related to control material
	Diarrhea	Mild	Possibly related to control material
	Bloating	Mild	Possibly related to control material
Treatment	None reported		

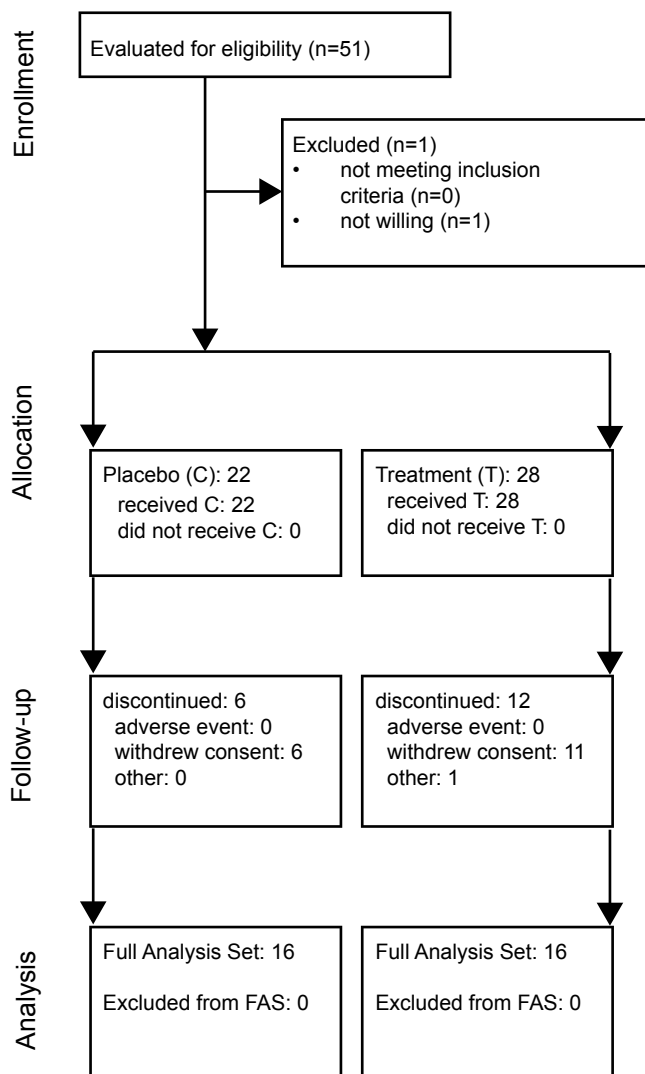
510

511 **Table S3: Data and statistical model output.**

512 Supplementary file “Table S3 Data and Statistics.xlsx”

513 *Supplementary Figures*

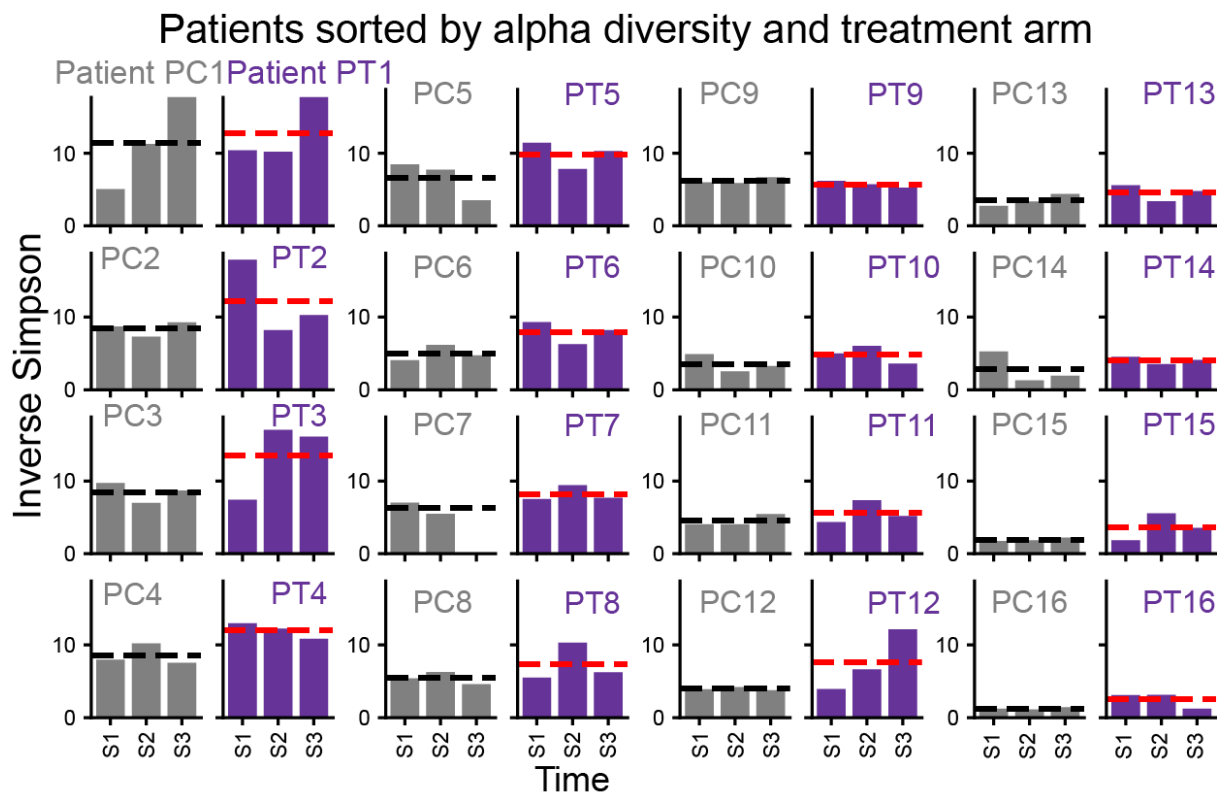
514



515

516 **Figure S1: CONSORT Report chart.**

517

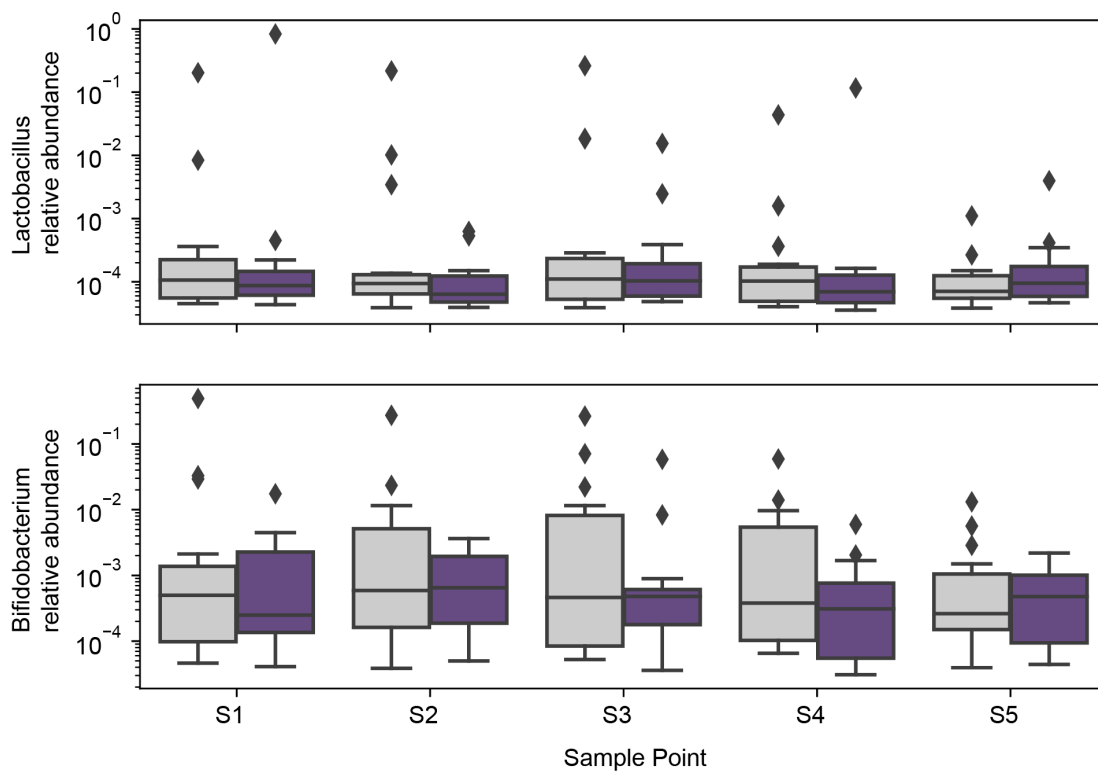


518
519

520 **Figure S2: Higher alpha diversity observed across individual patients during primary**
521 **endpoints (S1-S3). Inverse Simpson alpha diversity in 32 patients (Control: PC, Treated: PT) at**
522 **the end of an antibiotic course across samples S1, S2, S3; patients sorted by trial arm and**
523 **average diversity in descending order from top left to bottom right. Dashed lines indicate control**
524 **(grey) and treated (red) patient averages.**

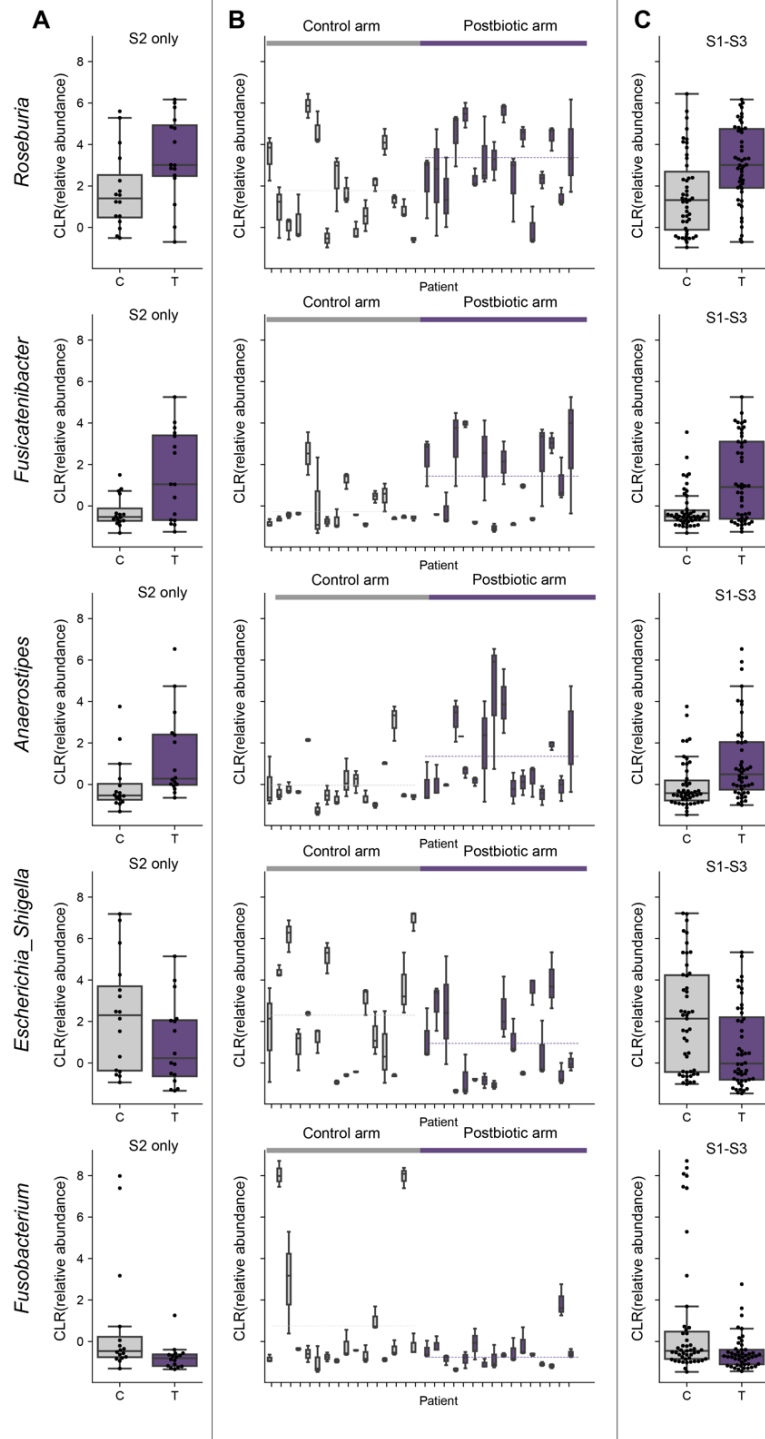
525
526

527
528



529
530
531
532
533

Figure S3: Relative abundances of probiotic genera. Relative genus abundances shown for samples from control (grey) and treated (purple) patients; differences were non-significant at each time point between treatment arms (Wilcoxon rank sum tests).



534

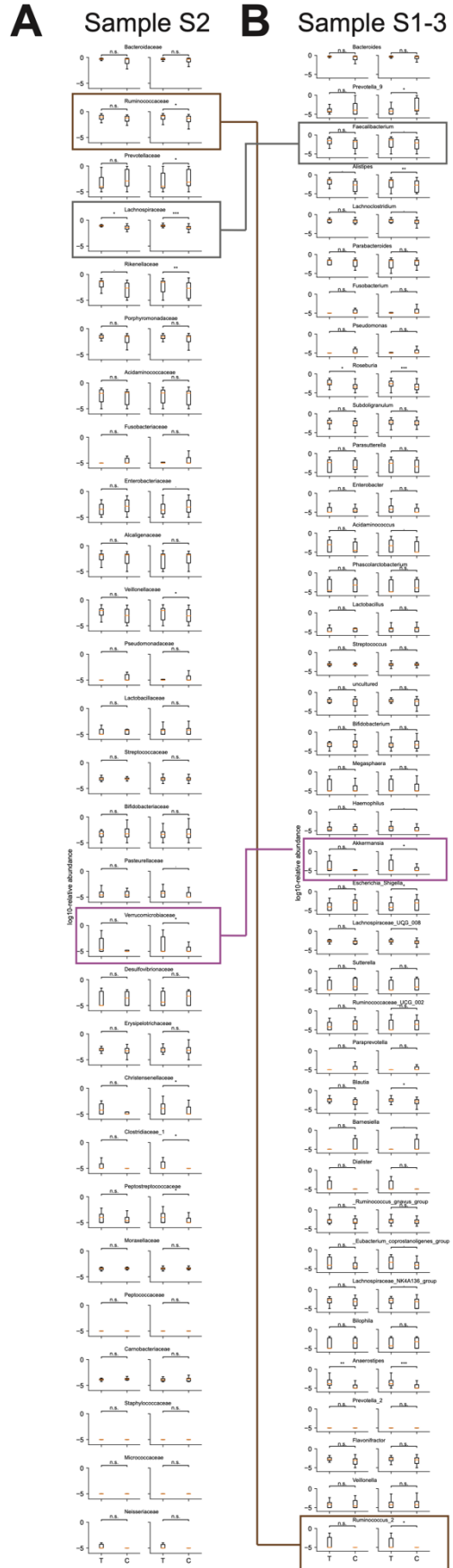
535 **Figure S4: CLR transformed relative abundances of five most strongly associated genera**
 536 **across patients and time.** Genera are organized in rows. **A)** CLR transformed relative
 537 abundances by treatment arm at timepoint S2 alone, **B)** for each patient in timepoints S1, S2, and
 538 S3 (dashed lines indicate medians per treatment arm), **C)** by treatment arm in timepoints S1, S2,
 539 and S3.



540

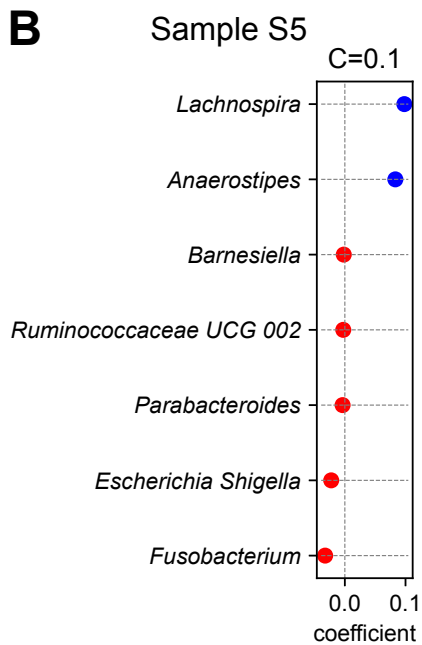
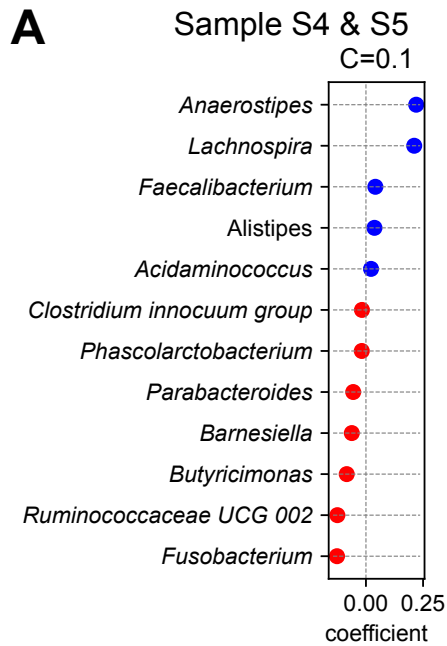
541 **Figure S5: Multivariate logistic regression with varying regularization strengths (C)**
 542 **confirm univariate results.** Coefficient estimates from L1-penalized logistic regressions on
 543 performed on CLR-transformed genus relative abundances in Sample S2 (A), or samples S1-S3
 544 (B), at different regularization strengths up until all coefficients were set to zero (C: inverse
 545 regularization strength).

546



548 **Figure S6: Relative abundance of bacterial families and genera**, sorted by average abundance.
549 Log-10 transformed relative family abundances in sample S2 (**A**) and genus (**B**) abundances
550 pooled over samples S1-S3 in treated (T) and control (C) patients. Boxes highlight select taxa
551 discussed as modulating cancer immunotherapies^{31,32,35}. ***: $p < 0.001$, **: $p < 0.01$, *: $p < 0.05$, .: $p < 0.1$, n.s.: $p > 0.1$; non-parametric Wilcoxon rank sums test not corrected for multiple
552 hypotheses.
553

554



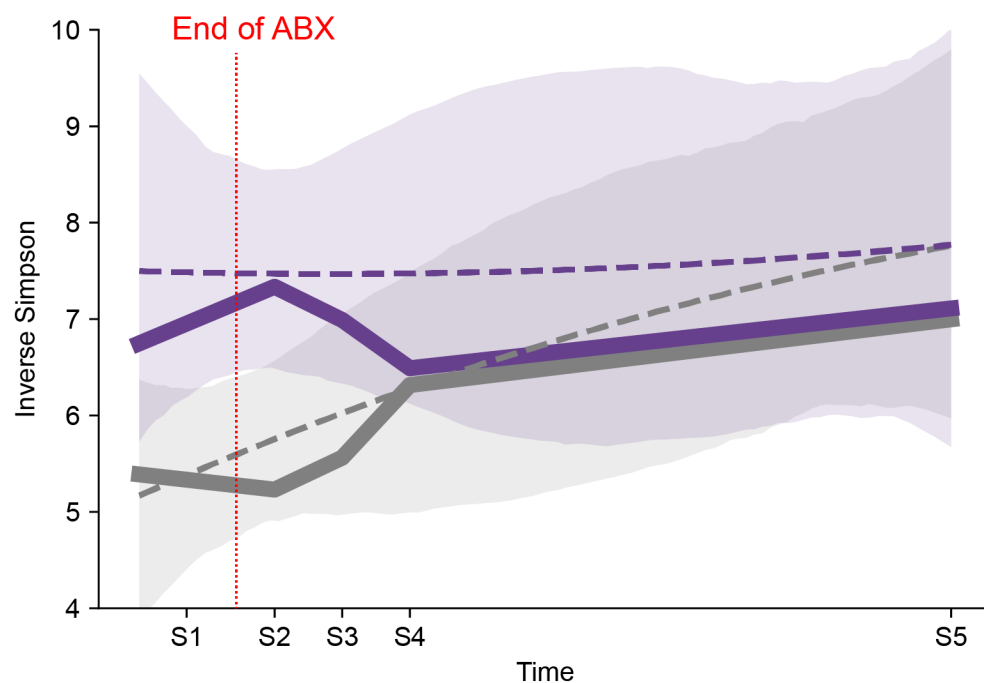
555

556 **Figure S7: Multivariate L-1 regularized logistic regression of late samples.** Coefficient
557 estimates from L1-penalized logistic regressions on performed on CLR-transformed genus
558 relative abundances in Sample S4 and S5 (**A**), or samples S5 alone (**B**) (C: inverse regularization
559 strength).

560

561

562
563



564
565 **Figure S8: Bacterial alpha diversity is increased at the end of an antibiotic course in**
566 **patients who received a postbiotic during their treatment and becomes similar ten days**
567 **after finishing the antibiotic.** Thick lines show a locally weighted scatterplot smoothing curve
568 for treated (purple) and control (grey) patients' bacterial alpha diversity across five
569 longitudinally collected samples; dashed lines and shaded regions show mean and confidence
570 intervals of a second-order line fit with time in days as predictor of alpha diversity.
571

572 Bibliography

- 573 1. Havey, T.C., Fowler, R.A., and Daneman, N. (2011). Duration of antibiotic therapy for
574 bacteremia: a systematic review and meta-analysis. *Crit Care* 15, R267. 10.1186/cc10545.
- 575 2. Hutchings, M.I., Truman, A.W., and Wilkinson, B. (2019). Antibiotics: past, present and
576 future. *Curr Opin Microbiol* 51, 72–80. 10.1016/j.mib.2019.10.008.
- 577 3. Maier, L., Goemans, C.V., Wirbel, J., Kuhn, M., Eberl, C., Pruteanu, M., Müller, P., Garcia-
578 Santamarina, S., Cacace, E., Zhang, B., et al. (2021). Unravelling the collateral damage of
579 antibiotics on gut bacteria. *Nature* 599, 120–124. 10.1038/s41586-021-03986-2.
- 580 4. Blaser, M.J. (2016). Antibiotic use and its consequences for the normal microbiome. *Science*
581 352, 544–545. 10.1126/science.aad9358.
- 582 5. Modi, S.R., Collins, J.J., and Relman, D.A. (2014). Antibiotics and the gut microbiota. *J Clin*
583 *Invest* 124, 4212–4218. 10.1172/JCI72333.
- 584 6. Whangbo, J., Ritz, J., and Bhatt, A. (2017). Antibiotic-mediated modification of the
585 intestinal microbiome in allogeneic hematopoietic stem cell transplantation. *Bone Marrow*
586 *Transplant* 52, 183–190. 10.1038/bmt.2016.206.
- 587 7. Dethlefsen, L., and Relman, D.A. (2011). Incomplete recovery and individualized responses
588 of the human distal gut microbiota to repeated antibiotic perturbation. *Proc Natl Acad Sci*
589 *USA* 108 *Suppl* 1, 4554–4561. 10.1073/pnas.1000087107.
- 590 8. Niehus, R., van Kleef, E., Mo, Y., Turlej-Rogacka, A., Lammens, C., Carmeli, Y., Goossens,
591 H., Tacconelli, E., Carevic, B., Preotescu, L., et al. (2020). Quantifying antibiotic impact on
592 within-patient dynamics of extended-spectrum beta-lactamase resistance. *Elife* 9, e49206.
593 10.7554/eLife.49206.
- 594 9. Morjaria, S., Schluter, J., Taylor, B.P., Littmann, E.R., Carter, R.A., Fontana, E., Peled, J.U.,
595 van den Brink, M.R.M., Xavier, J.B., and Taur, Y. (2019). Antibiotic-Induced Shifts in Fecal
596 Microbiota Density and Composition during Hematopoietic Stem Cell Transplantation.
597 *Infect Immun* 87. 10.1128/IAI.00206-19.
- 598 10. Bernard-Raichon, L., Venzon, M., Klein, J., Axelrad, J.E., Zhang, C., Sullivan, A.P., Hussey,
599 G.A., Casanovas-Massana, A., Noval, M.G., Valero-Jimenez, A.M., et al. (2022). Gut
600 microbiome dysbiosis in antibiotic-treated COVID-19 patients is associated with microbial
601 translocation and bacteremia. *Nat Commun* 13, 5926. 10.1038/s41467-022-33395-6.
- 602 11. Schluter, J., Djukovic, A., Taylor, B.P., Yan, J., Duan, C., Hussey, G.A., Liao, C., Sharma,
603 S., Fontana, E., Amoretti, L.A., et al. (2023). The TaxUMAP atlas: Efficient display of large
604 clinical microbiome data reveals ecological competition in protection against bacteremia.
605 *Cell Host & Microbe*. 10.1016/j.chom.2023.05.027.
- 606 12. Palleja, A., Mikkelsen, K.H., Forslund, S.K., Kashani, A., Allin, K.H., Nielsen, T., Hansen,
607 T.H., Liang, S., Feng, Q., Zhang, C., et al. (2018). Recovery of gut microbiota of healthy

- 608 adults following antibiotic exposure. *Nat Microbiol* 3, 1255–1265. 10.1038/s41564-018-
609 0257-9.
- 610 13. Brandt, L.J., Aroniadis, O.C., Mellow, M., Kanatzar, A., Kelly, C., Park, T., Stollman, N.,
611 Rohlke, F., and Surawicz, C. (2012). Long-term follow-up of colonoscopic fecal microbiota
612 transplant for recurrent *Clostridium difficile* infection. *Am J Gastroenterol* 107, 1079–1087.
613 10.1038/ajg.2012.60.
- 614 14. Buffie, C.G., Bucci, V., Stein, R.R., McKenney, P.T., Ling, L., Gobourne, A., No, D., Liu,
615 H., Kinnebrew, M., Viale, A., et al. (2015). Precision microbiome reconstitution restores bile
616 acid mediated resistance to *Clostridium difficile*. *Nature* 517, 205–208. 10.1038/nature13828.
- 617 15. Zhai, B., Ola, M., Rolling, T., Tosini, N.L., Joshowitz, S., Littmann, E.R., Amoretti, L.A.,
618 Fontana, E., Wright, R.J., Miranda, E., et al. (2020). High-resolution mycobiota analysis
619 reveals dynamic intestinal translocation preceding invasive candidiasis. *Nat Med* 26, 59–64.
620 10.1038/s41591-019-0709-7.
- 621 16. Willis, A.D. (2019). Rarefaction, Alpha Diversity, and Statistics. *Front Microbiol* 10, 2407.
622 10.3389/fmicb.2019.02407.
- 623 17. Kers, J.G., and Saccenti, E. (2021). The power of microbiome studies: some considerations
624 on which alpha and beta metrics to use and how to report results. *Front Microbiol* 12, 796025.
625 10.3389/fmicb.2021.796025.
- 626 18. Peled, J.U., Gomes, A.L.C., Devlin, S.M., Littmann, E.R., Taur, Y., Sung, A.D., Weber, D.,
627 Hashimoto, D., Slingerland, A.E., Slingerland, J.B., et al. (2020). Microbiota as Predictor of
628 Mortality in Allogeneic Hematopoietic-Cell Transplantation. *N Engl J Med* 382, 822–834.
629 10.1056/NEJMoa1900623.
- 630 19. Taur, Y., Jenq, R.R., Perales, M.-A., Littmann, E.R., Morjaria, S., Ling, L., No, D.,
631 Gobourne, A., Viale, A., Dahi, P.B., et al. (2014). The effects of intestinal tract bacterial
632 diversity on mortality following allogeneic hematopoietic stem cell transplantation. *Blood*
633 124, 1174–1182. 10.1182/blood-2014-02-554725.
- 634 20. Galloway-Peña, J.R., Smith, D.P., Sahasrabhojane, P., Ajami, N.J., Wadsworth, W.D., Daver,
635 N.G., Chemaly, R.F., Marsh, L., Ghantaji, S.S., Pemmaraju, N., et al. (2016). The role of the
636 gastrointestinal microbiome in infectious complications during induction chemotherapy for
637 acute myeloid leukemia. *Cancer* 122, 2186–2196. 10.1002/cncr.30039.
- 638 21. Taur, Y., Xavier, J.B., Lipuma, L., Ubeda, C., Goldberg, J., Gobourne, A., Lee, Y.J., Dubin,
639 K.A., Socci, N.D., Viale, A., et al. (2012). Intestinal domination and the risk of bacteremia in
640 patients undergoing allogeneic hematopoietic stem cell transplantation. *Clin Infect Dis* 55,
641 905–914. 10.1093/cid/cis580.
- 642 22. Faye, A.S., Allin, K.H., Iversen, A.T., Agrawal, M., Faith, J., Colombel, J.-F., and Jess, T.
643 (2023). Antibiotic use as a risk factor for inflammatory bowel disease across the ages: a
644 population-based cohort study. *Gut* 72, 663–670. 10.1136/gutjnl-2022-327845.

- 645 23. Wang, Q., Zhang, S.-X., Chang, M.-J., Qiao, J., Wang, C.-H., Li, X.-F., Yu, Q., and He, P.-F.
646 (2022). Characteristics of the Gut Microbiome and Its Relationship With Peripheral CD4+ T
647 Cell Subpopulations and Cytokines in Rheumatoid Arthritis. *Front Microbiol* *13*, 799602.
648 10.3389/fmicb.2022.799602.
- 649 24. Björkstén, B., Sepp, E., Julge, K., Voor, T., and Mikelsaar, M. (2001). Allergy development
650 and the intestinal microflora during the first year of life. *J Allergy Clin Immunol* *108*, 516–
651 520. 10.1067/mai.2001.118130.
- 652 25. Azad, M.B., Bridgman, S.L., Becker, A.B., and Kozyrskyj, A.L. (2014). Infant antibiotic
653 exposure and the development of childhood overweight and central adiposity. *Int J Obes*
654 (Lond) *38*, 1290–1298. 10.1038/ijo.2014.119.
- 655 26. Clemente, J.C., Manasson, J., and Scher, J.U. (2018). The role of the gut microbiome in
656 systemic inflammatory disease. *BMJ* *360*, j5145. 10.1136/bmj.j5145.
- 657 27. Sultan, A.A., Mallen, C., Muller, S., Hider, S., Scott, I., Helliwell, T., and Hall, L.J. (2019).
658 Antibiotic use and the risk of rheumatoid arthritis: a population-based case-control study.
659 *BMC Medicine* *17*, 154. 10.1186/s12916-019-1394-6.
- 660 28. Rao, C., Coyte, K.Z., Bainter, W., Geha, R.S., Martin, C.R., and Rakoff-Nahoum, S. (2021).
661 Multi-kingdom ecological drivers of microbiota assembly in preterm infants. *Nature* *591*,
662 633–638. 10.1038/s41586-021-03241-8.
- 663 29. Tomczak, H., Szalek, E., and Grześkowiak, E. (2014). The problems of urinary tract
664 infections with *Candida* spp. aetiology in women. *Postepy Hig Med Dosw (Online)* *68*,
665 1036–1039. 10.5604/17322693.1118989.
- 666 30. Smith, M., Dai, A., Ghilardi, G., Amelsberg, K.V., Devlin, S.M., Pajarillo, R., Slingerland,
667 J.B., Beghi, S., Herrera, P.S., Giardina, P., et al. (2022). Gut microbiome correlates of
668 response and toxicity following anti-CD19 CAR T cell therapy. *Nat Med* *28*, 713–723.
669 10.1038/s41591-022-01702-9.
- 670 31. Gopalakrishnan, V., Spencer, C.N., Nezi, L., Reuben, A., Andrews, M.C., Karpnits, T.V.,
671 Prieto, P.A., Vicente, D., Hoffman, K., Wei, S.C., et al. (2018). Gut microbiome modulates
672 response to anti-PD-1 immunotherapy in melanoma patients. *Science* *359*, 97–103.
673 10.1126/science.aan4236.
- 674 32. Routy, B., Le Chatelier, E., Derosa, L., Duong, C.P.M., Alou, M.T., Daillère, R., Fluckiger,
675 A., Messaoudene, M., Rauber, C., Roberti, M.P., et al. (2018). Gut microbiome influences
676 efficacy of PD-1-based immunotherapy against epithelial tumors. *Science* *359*, 91–97.
677 10.1126/science.aan3706.
- 678 33. Matson, V., Fessler, J., Bao, R., Chongsuwat, T., Zha, Y., Alegre, M.-L., Luke, J.J., and
679 Gajewski, T.F. (2018). The commensal microbiome is associated with anti-PD-1 efficacy in
680 metastatic melanoma patients. *Science* *359*, 104–108. 10.1126/science.aao3290.

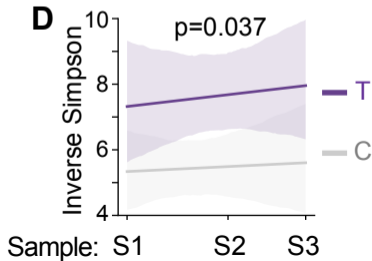
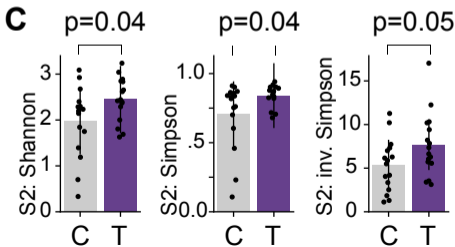
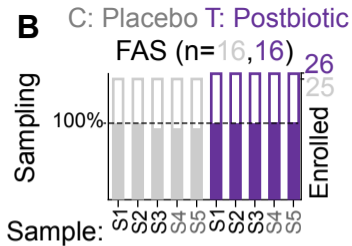
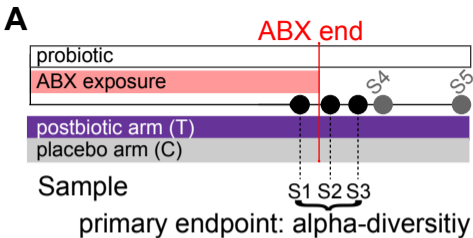
- 681 34. Hu, Y., Li, J., Ni, F., Yang, Z., Gui, X., Bao, Z., Zhao, H., Wei, G., Wang, Y., Zhang, M., et
682 al. (2022). CAR-T cell therapy-related cytokine release syndrome and therapeutic response is
683 modulated by the gut microbiome in hematologic malignancies. *Nat Commun* *13*, 5313.
684 10.1038/s41467-022-32960-3.
- 685 35. Schluter, J., Peled, J.U., Taylor, B.P., Markey, K.A., Smith, M., Taur, Y., Niehus, R., Staffas,
686 A., Dai, A., Fontana, E., et al. (2020). The gut microbiota is associated with immune cell
687 dynamics in humans. *Nature* *588*, 303–307. 10.1038/s41586-020-2971-8.
- 688 36. Olin, A., Henckel, E., Chen, Y., Lakshmikanth, T., Pou, C., Mikes, J., Gustafsson, A.,
689 Bernhardsson, A.K., Zhang, C., Bohlin, K., et al. (2018). Stereotypic immune system
690 development in newborn children. *Cell* *174*, 1277-1292.e14. 10.1016/j.cell.2018.06.045.
- 691 37. Wastyk, H.C., Fragiadakis, G.K., Perelman, D., Dahan, D., Merrill, B.D., Yu, F.B., Topf, M.,
692 Gonzalez, C.G., Van Treuren, W., Han, S., et al. (2021). Gut-microbiota-targeted diets
693 modulate human immune status. *Cell* *184*, 4137-4153 e14. 10.1016/j.cell.2021.06.019.
- 694 38. Taur, Y., Coyte, K., Schluter, J., Robilotti, E., Figueroa, C., Gjonbalaj, M., Littmann, E.R.,
695 Ling, L., Miller, L., Gyaltsen, Y., et al. (2018). Reconstitution of the gut microbiota of
696 antibiotic-treated patients by autologous fecal microbiota transplant. *Sci Transl Med* *10*.
697 10.1126/scitranslmed.aap9489.
- 698 39. Costello, S.P., Hughes, P.A., Waters, O., Bryant, R.V., Vincent, A.D., Blatchford, P.,
699 Katsikeros, R., Makanyanga, J., Campaniello, M.A., Mavrangelos, C., et al. (2019). Effect of
700 Fecal Microbiota Transplantation on 8-Week Remission in Patients With Ulcerative Colitis.
701 *JAMA* *321*, 156–164. 10.1001/jama.2018.20046.
- 702 40. Davar, D., Dzutsev, A.K., McCulloch, J.A., Rodrigues, R.R., Chauvin, J.-M., Morrison,
703 R.M., Deblasio, R.N., Menna, C., Ding, Q., Pagliano, O., et al. (2021). Fecal microbiota
704 transplant overcomes resistance to anti-PD-1 therapy in melanoma patients. *Science* *371*,
705 595–602. 10.1126/science.abf3363.
- 706 41. Bakken, J.S., Polgreen, P.M., Beekmann, S.E., Riedo, F.X., and Streit, J.A. (2013).
707 Treatment approaches including fecal microbiota transplantation for recurrent *Clostridium*
708 *difficile* infection (RCDI) among infectious disease physicians. *Anaerobe* *24*, 20–24.
709 10.1016/j.anaerobe.2013.08.007.
- 710 42. van Nood, E., Vrieze, A., Nieuwdorp, M., Fuentes, S., Zoetendal, E.G., de Vos, W.M.,
711 Visser, C.E., Kuijper, E.J., Bartelsman, J.F.W.M., Tijssen, J.G.P., et al. (2013). Duodenal
712 infusion of donor feces for recurrent *Clostridium difficile*. *N Engl J Med* *368*, 407–415.
713 10.1056/NEJMoa1205037.
- 714 43. Sandhu, A., and Chopra, T. (2021). Fecal microbiota transplantation for recurrent
715 *Clostridioides difficile*, safety, and pitfalls. *Therap Adv Gastroenterol* *14*,
716 17562848211053105. 10.1177/17562848211053105.
- 717 44. DeFilipp, Z., Bloom, P.P., Torres Soto, M., Mansour, M.K., Sater, M.R.A., Huntley, M.H.,
718 Turbett, S., Chung, R.T., Chen, Y.-B., and Hohmann, E.L. (2019). Drug-Resistant *E. coli*

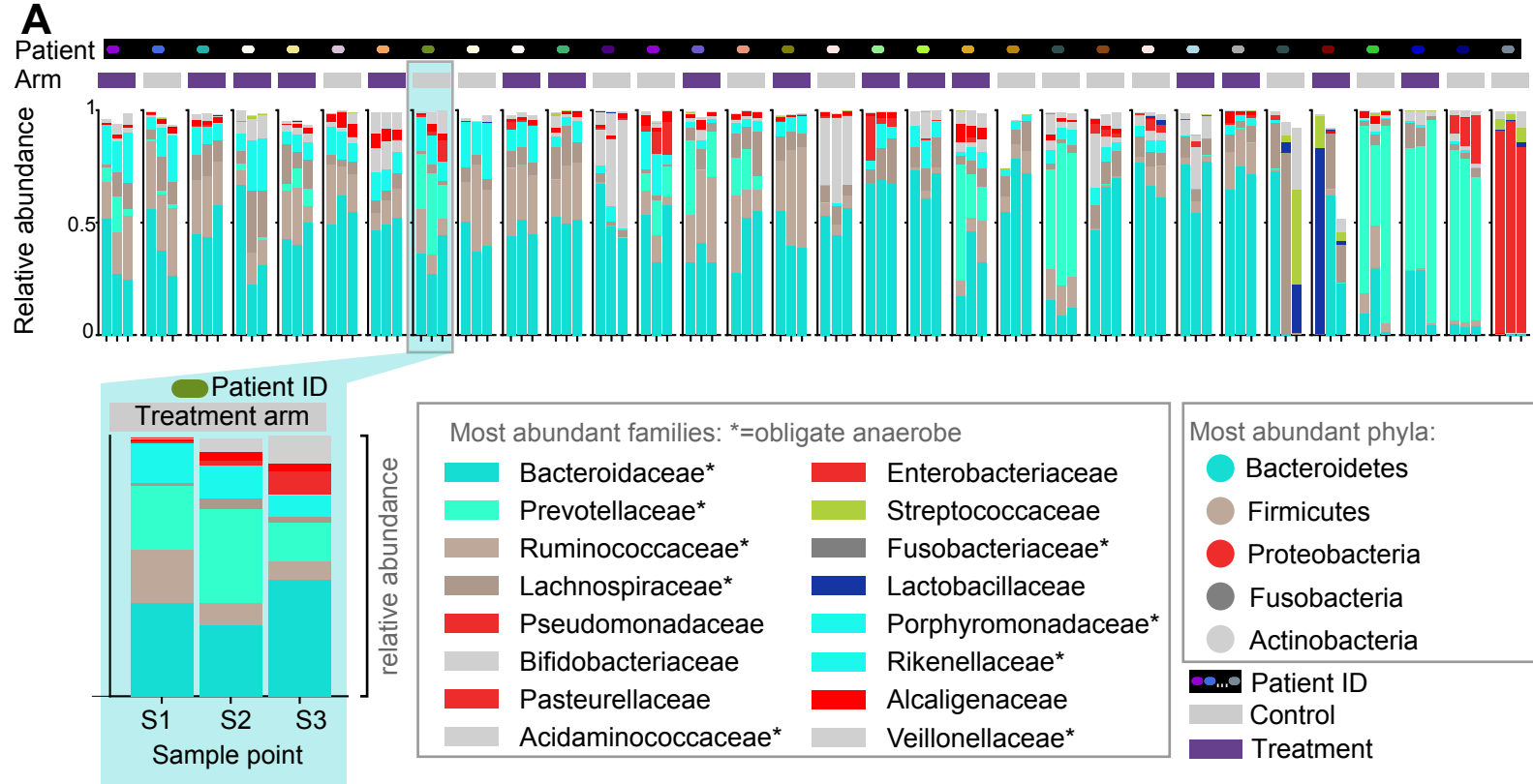
- 719 Bacteremia Transmitted by Fecal Microbiota Transplant. *N Engl J Med* 381, 2043–2050.
720 10.1056/NEJMoa1910437.
- 721 45. Ianiro, G., Punčochář, M., Karcher, N., Porcari, S., Armanini, F., Asnicar, F., Beghini, F.,
722 Blanco-Míguez, A., Cumbo, F., Manghi, P., et al. (2022). Variability of strain engraftment
723 and predictability of microbiome composition after fecal microbiota transplantation across
724 different diseases. *Nat Med* 28, 1913–1923. 10.1038/s41591-022-01964-3.
- 725 46. Commissioner, O. of the (2022). FDA Approves First Fecal Microbiota Product. FDA.
726 [https://www.fda.gov/news-events/press-announcements/fda-approves-first-fecal-microbiota-](https://www.fda.gov/news-events/press-announcements/fda-approves-first-fecal-microbiota-product)
727 [product.](https://www.fda.gov/news-events/press-announcements/fda-approves-first-fecal-microbiota-product)
- 728 47. Commissioner, O. of the (2023). FDA Approves First Orally Administered Fecal Microbiota
729 Product for the Prevention of Recurrence of *Clostridioides difficile* Infection. FDA.
730 [https://www.fda.gov/news-events/press-announcements/fda-approves-first-orally-](https://www.fda.gov/news-events/press-announcements/fda-approves-first-orally-administered-fecal-microbiota-product-prevention-recurrence-clostridioides)
731 [administered-fecal-microbiota-product-prevention-recurrence-clostridioides.](https://www.fda.gov/news-events/press-announcements/fda-approves-first-orally-administered-fecal-microbiota-product-prevention-recurrence-clostridioides)
- 732 48. Suez, J., Zmora, N., Segal, E., and Elinav, E. (2019). The pros, cons, and many unknowns of
733 probiotics. *Nat Med* 25, 716–729. 10.1038/s41591-019-0439-x.
- 734 49. Besselink, M.G., Santvoort, H.C. van, Buskens, E., Boermeester, M.A., Goor, H. van,
735 Timmerman, H.M., Nieuwenhuijs, V.B., Bollen, T.L., Ramshorst, B. van, Witteman, B.J., et
736 al. (2008). Probiotic prophylaxis in predicted severe acute pancreatitis: a randomised,
737 double-blind, placebo-controlled trial. *The Lancet* 371, 651–659. 10.1016/S0140-
738 6736(08)60207-X.
- 739 50. Zmora, N., Zilberman-Schapira, G., Suez, J., Mor, U., Dori-Bachash, M., Bashiardes, S.,
740 Kotler, E., Zur, M., Regev-Lehavi, D., Brik, R.B.-Z., et al. (2018). Personalized Gut Mucosal
741 Colonization Resistance to Empiric Probiotics Is Associated with Unique Host and
742 Microbiome Features. *Cell* 174, 1388-1405.e21. 10.1016/j.cell.2018.08.041.
- 743 51. Zhang, C., Derrien, M., Levenez, F., Brazeilles, R., Ballal, S.A., Kim, J., Degivry, M.-C.,
744 Quéré, G., Garault, P., van Hylckama Vlieg, J.E.T., et al. (2016). Ecological robustness of
745 the gut microbiota in response to ingestion of transient food-borne microbes. *ISME J* 10,
746 2235–2245. 10.1038/ismej.2016.13.
- 747 52. Salminen, M.K., Rautelin, H., Tynkkynen, S., Poussa, T., Saxelin, M., Valtonen, V., and
748 Järvinen, A. (2004). Lactobacillus Bacteremia, Clinical Significance, and Patient Outcome,
749 with Special Focus on Probiotic L. Rhamnosus GG. *Clin Infect Dis* 38, 62–69.
750 10.1086/380455.
- 751 53. Cassone, M., Serra, P., Mondello, F., Girolamo, A., Scafetti, S., Pistella, E., and Venditti, M.
752 (2003). Outbreak of *Saccharomyces cerevisiae* Subtype *boulardii* Fungemia in Patients
753 Neighboring Those Treated with a Probiotic Preparation of the Organism. *Journal of Clinical*
754 *Microbiology*. 10.1128/jcm.41.11.5340-5343.2003.
- 755 54. Suez, J., Zmora, N., Zilberman-Schapira, G., Mor, U., Dori-Bachash, M., Bashiardes, S., Zur,
756 M., Regev-Lehavi, D., Brik, R.B.-Z., Federici, S., et al. (2018). Post-Antibiotic Gut Mucosal

- 757 Microbiome Reconstitution Is Impaired by Probiotics and Improved by Autologous FMT.
758 *Cell* 174, 1406-1423.e16. 10.1016/j.cell.2018.08.047.
- 759 55. Salminen, S., Collado, M.C., Endo, A., Hill, C., Lebeer, S., Quigley, E.M.M., Sanders, M.E.,
760 Shamir, R., Swann, J.R., Szajewska, H., et al. (2021). The International Scientific
761 Association of Probiotics and Prebiotics (ISAPP) consensus statement on the definition and
762 scope of postbiotics. *Nat Rev Gastroenterol Hepatol* 18, 649–667. 10.1038/s41575-021-
763 00440-6.
- 764 56. Zhou, X., Qi, W., Hong, T., Xiong, T., Gong, D., Xie, M., and Nie, S. (2018).
765 Exopolysaccharides from *Lactobacillus plantarum* NCU116 Regulate Intestinal Barrier
766 Function via STAT3 Signaling Pathway. *J Agric Food Chem* 66, 9719–9727.
767 10.1021/acs.jafc.8b03340.
- 768 57. Mosca, A., Abreu Y Abreu, A.T., Gwee, K.A., Ianiro, G., Tack, J., Nguyen, T.V.H., and Hill,
769 C. (2022). The clinical evidence for postbiotics as microbial therapeutics. *Gut Microbes* 14,
770 2117508. 10.1080/19490976.2022.2117508.
- 771 58. Stein-Thoeringer, C.K., Saini, N.Y., Zamir, E., Blumenberg, V., Schubert, M.-L., Mor, U.,
772 Fante, M.A., Schmidt, S., Hayase, E., Hayase, T., et al. (2023). A non-antibiotic-disrupted
773 gut microbiome is associated with clinical responses to CD19-CAR-T cell cancer
774 immunotherapy. *Nat Med* 29, 906–916. 10.1038/s41591-023-02234-6.
- 775 59. Schulz, K.F., Altman, D.G., Moher, D., and CONSORT Group (2010). CONSORT 2010
776 statement: updated guidelines for reporting parallel group randomised trials. *BMJ* 340, c332.
777 10.1136/bmj.c332.
- 778 60. Barbut, F., and Meynard, J.L. (2002). Managing antibiotic associated diarrhoea. *BMJ* 324,
779 1345–1346.
- 780 61. Hensgens, M.P.M., Goorhuis, A., Dekkers, O.M., and Kuijper, E.J. (2012). Time interval of
781 increased risk for *Clostridium difficile* infection after exposure to antibiotics. *J Antimicrob*
782 *Chemother* 67, 742–748. 10.1093/jac/dkr508.
- 783 62. Wilton, L., Kollarova, M., Heeley, E., and Shakir, S. (2003). Relative risk of vaginal
784 candidiasis after use of antibiotics compared with antidepressants in women: postmarketing
785 surveillance data in England. *Drug Saf* 26, 589–597. 10.2165/00002018-200326080-00005.
- 786 63. Yu, D., Du, J., Pu, X., Zheng, L., Chen, S., Wang, N., Li, J., Chen, S., Pan, S., and Shen, B.
787 (2022). The Gut Microbiome and Metabolites Are Altered and Interrelated in Patients With
788 Rheumatoid Arthritis. *Front Cell Infect Microbiol* 11, 763507. 10.3389/fcimb.2021.763507.
- 789 64. Nie, K., Ma, K., Luo, W., Shen, Z., Yang, Z., Xiao, M., Tong, T., Yang, Y., and Wang, X.
790 (2021). *Roseburia intestinalis*: A Beneficial Gut Organism From the Discoveries in Genus
791 and Species. *Front Cell Infect Microbiol* 11, 757718. 10.3389/fcimb.2021.757718.
- 792 65. Bui, T.P.N., Mannerås-Holm, L., Puschmann, R., Wu, H., Troise, A.D., Nijse, B., Boeren,
793 S., Bäckhed, F., Fiedler, D., and deVos, W.M. (2021). Conversion of dietary inositol into

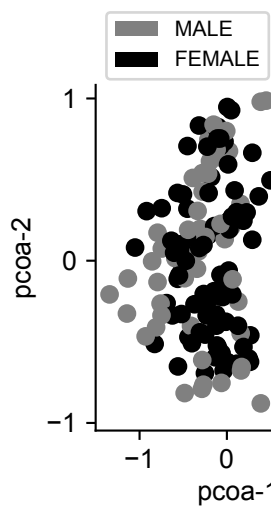
- 794 propionate and acetate by commensal *Anaerostipes* associates with host health. *Nat Commun*
795 *12*, 4798. 10.1038/s41467-021-25081-w.
- 796 66. Freier, T.A., Beitz, D.C., Li, L., and Hartman, P.A. (1994). Characterization of *Eubacterium*
797 *coprostanoligenes* sp. nov., a cholesterol-reducing anaerobe. *Int J Syst Bacteriol* *44*, 137–142.
798 10.1099/00207713-44-1-137.
- 799 67. Mima, K., Sukawa, Y., Nishihara, R., Qian, Z.R., Yamauchi, M., Inamura, K., Kim, S.A.,
800 Masuda, A., Nowak, J.A., Noshō, K., et al. (2015). *Fusobacterium nucleatum* and T Cells in
801 Colorectal Carcinoma. *JAMA Oncol* *1*, 653–661. 10.1001/jamaoncol.2015.1377.
- 802 68. Brennan, C.A., and Garrett, W.S. (2019). *Fusobacterium nucleatum* — symbiont, opportunist
803 and oncobacterium. *Nat Rev Microbiol* *17*, 156–166. 10.1038/s41579-018-0129-6.
- 804 69. Osbelt, L., Wende, M., Almási, É., Derksen, E., Muthukumarasamy, U., Lesker, T.R.,
805 Galvez, E.J.C., Pils, M.C., Schalk, E., Chhatwal, P., et al. (2021). *Klebsiella oxytoca* causes
806 colonization resistance against multidrug-resistant *K. pneumoniae* in the gut via cooperative
807 carbohydrate competition. *Cell Host Microbe*. 10.1016/j.chom.2021.09.003.
- 808 70. Oliveira, R.A., Ng, K.M., Correia, M.B., Cabral, V., Shi, H., Sonnenburg, J.L., Huang, K.C.,
809 and Xavier, K.B. (2020). *Klebsiella michiganensis* transmission enhances resistance to
810 Enterobacteriaceae gut invasion by nutrition competition. *Nat Microbiol* *5*, 630–641.
811 10.1038/s41564-019-0658-4.
- 812 71. Buffie, C.G., and Pamer, E.G. (2013). Microbiota-mediated colonization resistance against
813 intestinal pathogens. *Nat Rev Immunol* *13*, 790–801. 10.1038/nri3535.
- 814 72. Roswall, J., Olsson, L.M., Kovatcheva-Datchary, P., Nilsson, S., Tremaroli, V., Simon, M.-
815 C., Kiilerich, P., Akrami, R., Krämer, M., Uhlén, M., et al. (2021). Developmental trajectory
816 of the healthy human gut microbiota during the first 5 years of life. *Cell Host & Microbe* *29*,
817 765-776.e3. 10.1016/j.chom.2021.02.021.
- 818 73. Vatanen, T., Franzosa, E.A., Schwager, R., Tripathi, S., Arthur, T.D., Vehik, K., Lernmark,
819 Å., Hagopian, W.A., Rewers, M.J., She, J.-X., et al. (2018). The human gut microbiome in
820 early-onset type 1 diabetes from the TEDDY study. *Nature* *562*, 589–594. 10.1038/s41586-
821 018-0620-2.
- 822 74. Coyte, K.Z., Schluter, J., and Foster, K.R. (2015). The ecology of the microbiome: Networks,
823 competition, and stability. *Science* *350*, 663–666. 10.1126/science.aad2602.
- 824 75. Button, J.E., Cosetta, C.M., Reens, A.L., Brooker, S.L., Rowan-Nash, A.D., Lavin, R.C.,
825 Saur, R., Zheng, S., Autran, C.A., Lee, M.L., et al. (2023). Precision modulation of dysbiotic
826 adult microbiomes with a human-milk-derived synbiotic reshapes gut microbial composition
827 and metabolites. *Cell Host & Microbe*. 10.1016/j.chom.2023.08.004.
- 828 76. Seabold, S., and Perktold, J. (2010). Statsmodels: Econometric and Statistical Modeling with
829 Python. Proceedings of the 9th Python in Science Conference, 92–96. 10.25080/Majora-
830 92bf1922-011.

- 831 77. Pedregosa, F., Varoquaux, G., Gramfort, A., Michel, V., Thirion, B., Grisel, O., Blondel, M.,
832 Prettenhofer, P., Weiss, R., Dubourg, V., et al. (2011). Scikit-learn: Machine Learning in
833 Python. *Journal of Machine Learning Research* 12, 2825–2830.
- 834 78. Pinheiro, J.C., Bates, D.M., DebRoy, S.S., and Sarkar, D. (2013). *Nlme: Linear and*
835 *Nonlinear Mixed Effects Models*.
- 836 79. Oksanen, J., Simpson, G.L., Blanchet, F.G., Kindt, R., Legendre, P., Minchin, P.R., O’Hara,
837 R.B., Solymos, P., Stevens, M.H.H., Szoecs, E., et al. (2022). *vegan: Community Ecology*
838 *Package*.
- 839

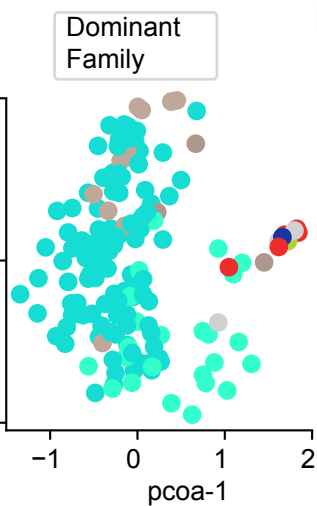




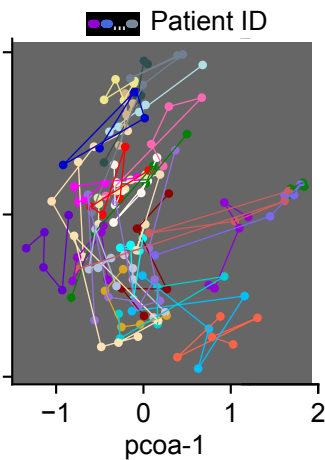
B



C



D



E

