

Title page

Higher long-term visit-to-visit blood pressure variability is associated with severe cerebral small vessel disease in the general population.

Xinyu Zhao^{1#}, Hui Ying^{2#}, Jing Li³, Xianquan Shi⁴, Shuohua Chen⁵, Han Lv², Shouling Wu^{5*},
Zhenchang Wang^{2*}

¹ Clinical Epidemiology & EBM Unit, Beijing Friendship Hospital, Capital Medical University; State Key Lab of Digestive Health, National Clinical Research Center for Digestive Diseases, Beijing, China.

² Department of Radiology, Beijing Friendship Hospital, Capital Medical University, Beijing, China

³ Department of Radiology, Department of ultrasound, Beijing Friendship Hospital, Capital Medical University, Beijing, China

⁴ Department of Cardiology, Kailuan General Hospital, Tangshan, China

⁵ Department of Cardiology, Kailuan General Hospital, Tangshan, China

[#] Xinyu Zhao and Hui Ying contributed equally to this work.

***Corresponding author:**

Shouling Wu

Department of Cardiology, Kailuan General Hospital, Tangshan 063000, China. E-mail address:

drwusl@163.com

Zhenchang Wang

Department of Radiology, Beijing Friendship Hospital, Capital Medical University

NOTE: This preprint reports new research that has not been certified by peer review and should not be used to guide clinical practice.

No.95, Yong An Road, Xicheng District, Beijing 100050, China

E-mail: cjr.wzhch@vip.163.com

Author contribution statement

ZC and SW designed the study, guided the writing of the manuscript, and reviewed the manuscript. XZ analyzed the data. XZ and HY wrote the manuscript. HY, JL, XS, SC, and HL interpreted the data. ZC and SW revised the manuscript. All authors read and approved the final manuscript.

Conflict of interest disclosures

All authors report no conflicts of interest.

Funding

This work was supported by the Beijing Municipal Administration of Hospitals Incubating Program (PX2022001), the National Natural Science Foundation of China (grant numbers: 82272072, 61931013), and Beijing Scholars Program (grant number: [2015] 160).

Acknowledgment

The authors thank all the members of the Kailuan Study Team for their contribution and the participants who contributed their data.

Data Availability

Data are available on reasonable request from the corresponding author at cjr.wzhch@vip.163.com.

Abstract

Background:

Long-term blood pressure (BP) variability is related to several diseases, but its impact on cerebral small vessel disease (cSVD) is uncertain. The study explored the relationship between BP variability, total cSVD burden, and its typical features.

Method:

The study involved 1284 participants from the Kailuan cohort. From 2006 to 2022, systolic BP (SBP), diastolic BP (DBP), and pulse pressure (PP) variability were calculated as low, middle, or high. Magnetic resonance imaging was used to identify white matter hyperintensities (WMH), lacunae (LA), cerebral microbleeds (CMBs), and visible perivascular spaces (PVS). The burden of cSVD was defined as non, mild, moderate, or severe. Logistic regression was used to estimate the odds ratio (OR) and confidence interval (CI).

Results:

High SBP variability was associated with moderate cSVD burden (OR=1.89, 95% CI: 1.09-3.29) and PVS (OR= 1.62, 95%CI: 1.10-2.39). The DBP was associated with LA (OR=1.74, 95%CI: 1.06-2.84). The PP showed obvious risk effects on moderate/severe cSVD burden (OR= 1.99, 95%CI: 1.17-3.41; OR=2.49, 1.34-4.63). These associations were modified by age and hypertension status. In the young adults (age<60 years old), only high PP variability associated with severe cSVD burden (OR=3.33, 95%CI: 1.31-8.44), LA (OR=3.02, 95%CI: 1.31-6.93), and PVS (OR=1.86, 95%CI: 1.20-2.88). The risk effect of SBP and PP variability on cSVD burden was only significant in the participants with hypertension.

Conclusion:

High long-term BP variability, especially in combination with hypertension, is a risk factor for total cSVD burden, LA, and PVS. it is crucial to pay attention to PP variability in young adults.

Keyword:

Blood pressure variability, cerebral small vessel disease, white matter hyperintensities, lacunae, cerebral microbleeds, visible perivascular spaces.

Abbreviations: Cerebral small vessel disease (cSVD), white matter hyperintensities (WMHs), lacunae of presumed vascular origin (LA), cerebral microbleeds (CMBs), visible perivascular spaces (PVS), magnetic resonance (MR), blood pressure (BP), systolic blood pressure (SBP), diastolic blood pressure (DBP), pulse pressure (PP), and multi-modality medical imaging study (META-KLS)

1 Introduction

Cerebral small vessel disease (cSVD) is a chronic progressive disorder that refers to a group of conditions affecting the small blood vessels in the brain¹. Typical identified cSVD subtypes include white matter hyperintensities (WMH), lacunae of presumed vascular origin (LA), cerebral microbleeds (CMBs), and visible perivascular spaces (PVS)². Patients with cSVD are at an increased risk of stroke, transient ischemic attack depression, and vascular dementia, finally causing disability and mortality³. The disease's mechanism remains unclear, leading to no practical preventative or therapeutic approach for cSVD⁴. Total cSVD burden, which sums up the different magnetic resonance imaging (MRI) features that were present, was a simple and effective indicator that captured the overall effect of SVD on the brain. It is meaningful to explore factors that increase the risk of incidence of cSVD or the severity of cSVD burden, finding potential measures for disease prevention.

The concept of visit-to-visit blood pressure (BP) variability is not new⁵. Numeric evidence has suggested that BP variability is a significant independent risk factor for several diseases, especially cardiovascular events, regardless of average BP⁶⁻⁸. Though a meta-analysis showed that BP variability was associated with cSVD, the positive relationship was only significant using 24-hour ambulatory BP monitoring and short-term (<6 months) visit-to-visit BPV⁹. The evidence on the relationship between long-term visit-to-visit BP and cSVD is still limited. Furthermore, most existing studies assessed WMH, while evidence on the total cSVD burden and other cSVD subtypes, including LA, CMBs, and PVS, is sparse.

So, based on the Kailuan cohort study, the present study aimed to explore the relationship between long-term visit-to-visit BPV and total cSVD burden and every typical cSVD feature.

2 Method

2.1 Study population

This is a cross sectional study based on an ongoing longitudinal prospective cohort study, the Kailuan study, as detailed elsewhere^{10,11}. From 2006 to 2007, 101 510 participants in the Kailuan community were enrolled, and follow-up surveys were conducted biennially. The study has

finished eight surveys (2006-2007, 2008-2009, 2010-2011, 2012-2013, 2014-2015, 2016-2017, 2018-2019, and 2020-2022). At the recent survey (2020-2022), we additionally performed a multi-modality medical imaging study (META-KLS), which enrolled subjects who participated in the Kailuan study and were asked to complete multi-modality medical imaging, including brain MR imaging scan, retinal fundus photograph, and so on. The detailed rationale and design of META-KLS has been published online¹². The study enrolled 1508 participants who agreed on the META-KLS and completed brain MR imaging. We excluded 224 participants due to the following: (1) having less than three visits of BP measure during the past eight surveys (N=174); (2) having a stroke at present examination (N=3); (3) having cancer at present examination (N=1); and (4) more than half of the covariate information is missing (N=46). Finally, 1284 participants were included in the analysis (Figure 1.).

2.2 Ethics Statement

The Medical Ethics Committee of Kailuan General Hospital has approved both the Kailuan Study and META-KLS (IRB Number: 2008 No.1 and 2021002, respectively). These two cohort studies were registered online (ChiCTR2000029767 on chictr.org.cn and NCT05453877 on Clinicaltrials.gov, respectively). Informed consent was obtained from all participants included in the study.

2.3 Variability of BP assessment

The BP, including systolic BP (SBP) and diastolic BP (DBP), was measured in the left upper arm using a calibrated mercury sphygmomanometer while the participant sat. At least 2 BP measurements were taken after 5 min of rest. BP was then measured again if the difference between the two measurements was more than 5 mm Hg. The final BP value was recorded as the average value of the BP measurements, and pulse pressure (PP) was calculated as SBP minus DBP. Hypertension was defined as systolic blood pressure ≥ 140 mm Hg and diastolic blood pressure ≥ 90 mm Hg, currently receiving antihypertensive treatment, or having a self-reported physician diagnosis.

Four indices of variability were used: (1) coefficient of variation (CV), (2) standard deviation (SD), and (3) variability independent of the mean (VIM); VIM was calculated as SD/mean. It is similar to CV except that the mean BP denominator is raised to a specific power, x , that removes any correlation with mean BP. Power x is modeled as $SD = k \times \text{means}$ and was derived from fitting curves by nonlinear regression analysis as implemented in the PROC NLIN procedure of the SAS package⁵. (4) average natural variability (ARV) is the average absolute difference between successive values¹³. The VIM was used as the primary variability measure.

2.4 *MR imaging and definition of cSVD*

The brain MR imaging was collected using a 3.0 Tesla scanner and an eight-channel phased-array coil (GE 750W; General Electric Medical Systems, Milwaukee, WI, USA). The sequences used in the MRI examination included the following: axial T2-weighted imaging, three-dimensional (3D) brain volume (BRAVO) for high-resolution T1-weighted imaging, 3D fluid-attenuated inversion recovery imaging, diffusion-weighted imaging (DWI), and susceptibility-weighted angiography (SWAN).

According to the Standards for Reporting Vascular Changes on Neuroimaging 2 (STRIVE-2),^{2,4} closely correlated features are markers of cSVD were assessed, including (1) LA, which was defined as the presence of one or more lacunes (1 point if present); (2) CMBs, which was defined as the presence of one or more CMB (1 point if present); (3). PVS, which was defined as there were moderate to severe (grade 2–4) PVS in the basal ganglia (1 point if present); (4) WMH, which was defined as either (early) confluent deep WMH (Fazekas score 2 or 3) or irregular periventricular WMH extending into the deep white matter (Fazekas score 3) (1 point if present). The total burden of cSVD was rated on an ordinal scale from 0 to 4 by counting the presence of each of the 4 MRI features of cSVD. And then defined as a categorical variable, including non-cSVD if the total burden is zero, mild cSVD if the entire burden is one, moderate cSVD if the total burden is 2, and severe cSVD if the total burden is 3 or 4.

All images, including WMH, Lacunes, CMBs, and PVS, were independently evaluated by two experienced neuroradiologists. The consistency of vision has been proved in our previous study¹⁴.

2.5 *Potential confounders*

We conducted questionnaire surveys to collect the following information, including age (18-59 years old, or ≥ 60 years old), gender, education level (junior high school or below, senior high school, or college and above), smoking status (never smoking, past smoking, or current smoking), drinking status (never drinking, past drinking, or everyday drinking), physical activity, disease history, and medications. We categorized the physical activity level as “inactive,” “moderately active,” or “active” according to the frequency of physical activity (>20 min/time) during leisure time; if the response was “never,” “sometimes,” or “ \geq four times/week,” correspondingly. Trained field workers measured height and weight, and body mass index (BMI) was calculated as weight in kilograms divided by height in meters squared. Laboratory tests, including fasting blood glucose, triglycerides (TG), high-density lipoprotein cholesterol (HDL-c), and low-density lipoprotein cholesterol (LDL-c) were assessed in the central lab. Diabetes was defined as fasting blood glucose ≥ 7.0 mmol/L, taking oral hypoglycaemic agents or insulin, or having a self-reported physician diagnosis.

2.6 *Statistical methods*

Variables were presented as mean \pm standard deviation or number (%) and compared using analysis of variance or Chi-square test, respectively.

For the test of parallel lines was not fitted, multinomial logistic regressions were used to estimate odds ratios (ORs) and 95% confidence intervals (CIs) of the BP variability on the total burden of cSVD (mild *vs.* non, moderate *vs.* non, and severely non). Unconditional logistic regressions assessed the association between BP variability and the four markers of cSVD (WMH, LA, CMBs, and PVS). BP variability was categorized into three groups ($< p_{25}$ as low, p_{25} - p_{75} as middle, or $\geq p_{75}$ as high). Three multivariate models were constructed to control for possible confounding effects: (1) age- and gender-adjusted model, which adjusted baseline age (2020-2022 survey) and gender; (2) multivariate model 1, which further adjusted education level, drinking status, smoking status, physical activity level, baseline BMI, diabetes, TG, HDL, and LDL level. (3) Multivariate

model 2 is based on multivariate model 1 and further adjusted the mean value of SBP, DBP, or PP when the exposure was the corresponding variability of the BP indicator.

Assuming that missing data was random, we used multiple imputations by chained equations to impute one complete dataset with five interactions, which showed equal distribution before and after imputation (Supplementary Table 1). Subgroup analyses were performed according to age group, gender, and hypertension status to test the potential modification effect. We also conducted sensitivity analyses to verify the results: (1) using the original complete dataset, (2) excluding participants with diabetes, (3) excluding participants who are currently taking antihypertensive medications.

The main results were shown using the multivariate model 2. For the detailed results, see the supplementary tables 3-10. Analyses were implemented with SAS version 9.4 (SAS Institute Inc. Cary, NC) or R version 3.5.2 (<https://www.r-project.org/>).

3 Results

3.1 Baseline characteristics and the prevalence of cSVD burden

Of the invited 1284 participants, the mean age was 56.5 ± 11.8 years old, and 52.7% were male.

The mean follow-up duration was 13.1 ± 3.0 years. cSVD was identified in 890 (69.3%) participants at the baseline, including 212 (16.5%) LA, 351 (27.3%) CMBs, 785 (61.1%) PVS, and 346 (27.0%) WMH. For the patients with cSVD, 415(46.6%) had mild cSVD burden, 252(28.3%) had moderate cSVD burden, and 223(25.1%) had severe cSVD burden (supplementary table S2). Compared with the participants without a cSVD burden, the subjects with a cSVD burden were significantly older, were more male, had lower education but higher physical activity levels, were generally smokers and drinkers, were usually diabetes, hypertension, had slightly higher BMI and LDL-c level, while had lower HDL-c level. There was no significant difference between the participants with and without cSVD in follow-up durations. (table 1)

3.2 Associations between BP variability and burden of cSVD/different markers of cSVD

Figure 2 shows the associations between BP variability and the burden of cSVD. Compared with low variability of SBP, higher SBP variability was significantly associated with moderate cSVD burden (middle vs low: OR=1.66, 95%CI: 1.03-2.65, $p = 0.036$; high vs low: OR=1.89, 95%CI: 1.09-3.29, $p = 0.023$). High SBP variability showed a risk effect on the severe cSVD burden on the boundary of significance (OR=1.75, 95%CI: 1.09-3.29, $p = 0.067$). For the markers of cSVD, High SBP variability was significantly associated with PVS (OR= 1.62, 95%CI: 1.10-2.39, $p = 0.015$). High DBP variability was only observed to be associated with LA (OR=1.74, 95%CI: 1.06-2.84, $p = 0.082$). High PP variability showed more obvious risk effects on moderate/severe cSVD burden (moderate cSVD burden: OR= 1.99, 95%CI: 1.17-3.41, $p = 0.012$, severe cSVD burden: OR=2.49, 1.34-4.63, $p = 0.004$), LA (OR=1.75, 95%CI:1.06-2.89, $p = 0.028$), and PVS (OR=1.77, 95%CI: 1.20-2.61, $p = 0.004$).

3.3 Associations between BP variability and burden of cSVD/different markers of cSVD by age groups

Figure 3 shows the estimated risk of BP variability on cSVD burden and different markers of cSVD by age group. For participants under 60 years old, high variability of SBP was significantly associated with PVS(OR=1.65,95%CI: 1.06-2.58, $p = 0.027$), High variability of PP was significantly associated with moderate (OR=2.04,95%CI: 1.03-4.06, $p = 0.042$), severe cSVD burden (OR=3.33,95%CI: 1.31-8.44, $p = 0.011$), LA (OR=3.02,95%CI: 1.31-6.93, $p = 0.009$), and PVS(OR=1.86,95%CI: 1.20-2.88, $p = 0.006$). The variability of DBP was not observed to be associated with LA for participants 60 years or older (OR=2.37,95%CI: 1.26-4.45, $p = 0.007$). Only high variability of SBP showed a significant risk effect on the moderate cSVD burden (OR=4.87, 95%CI:1.14-20.83, $p = 0.033$) and severe cSVD burden on the boundary of significance (OR=3.87, 95%CI: 0.90-16.74, $p = 0.070$).

3.4 Associations between BP variability and burden of cSVD/different markers of cSVD by gender and hypertension status.

The association between BP variability and cSVD burden or different markers of cSVD were consistent both in males and females (Figure 4). Stratified by hypertension status, the risk effect of

higher variability of SBP (middle vs low variability for moderate cSVD burden: OR=2.10, 95%CI:1.05-4.18, $p = 0.035$) and PP (high vs low variability for severe cSVD burden: OR=2.32, 95%CI:1.03-5.22, $p = 0.042$) on cSVD burden were only significantly positive in the participants with hypertension. (Figure 5).

3.5 Sensitivity analyses

Using original data, excluding the participants with diabetes, excluding participants who are currently taking antihypertensive medications, or using other variability indicators, the estimated impact of BP variability on cSVD burden and different markers did not change substantially (table 2, supplementary table 11-12).

4 Discussion

In this study, we identified cSVD in 890 (69.3%) participants in this sub-study of a population-based cohort. We showed that higher long-term visit-to-visit BPV was an independent risk factor for cSVD, including the total cSVD burden, LA, and PVS. Notably, we found that the risk effect of BPV on cSVD differs by age.

Our study showed that higher visit-to-visit variability in SBP, not DBP, was significant with total cSVD burden. Recently, two meta-analysis studies have demonstrated that BPV was independently associated with CSVD^{9,15}. However, these studies primarily defined the cSVD as WMH. Until now, little study has explored the relationship between long-term visit-to-visit BPV and total cSVD burden. Two other studies showed that short-term (twenty-four-hour)¹⁶ or middle-term (day-to-day)¹⁷ SBP variability was associated with total cSVD burden but did not observe a significant association between DBP variability and total cSVD burden, which was consistent with our study to a certain extent. The underlying mechanisms between BPV and cSVD are still poorly understood. There are several possible explanations. Firstly, high BPV may increase blood flow pulsation and dampen blood flow smoothing, causing damage to brain microvasculature¹⁸. Secondly, high BPV can potentially hinder nitric oxide production and compromise endothelial function. This could lead to injuries in the "neurovascular unit," abnormalities in the blood-brain barrier, and, consequently, lesions in small blood vessels¹⁹⁻²¹. It has been proposed that increased variability in blood pressure may stem from pre-existing brain diseases disrupting central autonomic control²². Calcium channel blockers, recognized as the most effective drug class for mitigating variability in blood pressure, have demonstrated noteworthy

efficacy in reducing the risk of vascular cognitive impairment^{23,24}. This observation underscores the potential clinical significance of agents targeting blood pressure variability in diminishing the risk of brain vascular disease and cognitive impairment in old age.

For the specific markers of cSVD, we found that the risk effect of long-term variability on SBP was mainly on the PVS (high vs low: OR= 1.62, 95%CI: 1.10-2.39, $p = 0.015$), and DBP variability only had a risk effect on LA (high vs. low: OR=1.74, 95%CI: 1.06-2.84, $p = 0.082$). Studies have shown that the high level of office SBP, 24-hour ambulatory SBP²⁵, and cumulative SBP were the risk factors for PVS²⁶. Our study showed that the long-term variability of SBP was also an independent risk factor for PVS. The relationship between DBP and LA has not been thoroughly studied yet. Furthermore, our study showed that long-term variability of PP seemed to have a more significant risk effect on total cSVD burden, LA, and PVS than SBP and DBP. Previous studies evaluated BPV most frequently using SBP or DBP, few studies employed PP. So far, studies have reported that PP was a better predictor of cardiovascular²⁷ and cerebrovascular²⁸ risk than diastolic or systolic pressure. Studies showed PP was associated with the cognitive independence of SBP^{29,30}. Increased PP and its variability might represent diminished regulatory functions of vessels against pulsate blood flow, making the brain tissues more susceptible to direct injury.

We did not observe a significant association between BPV and other markers of cSVD, including WMH and CMBs. However, most existing studies showed that BPV was a risk factor for WMH. These studies mostly used the SD CV as the BPV indicator but did not consider the potential confounding effect of the mean value of BP³¹⁻³⁴. It is difficult to determine whether BPV has an independent risk effect on cSVD besides the absolute BP level. Our data also showed that high SBP variability of SD was significantly associated with WMH (OR=1.73, 95%CI:1.15-2.62, $p=0.009$). However, this association disappeared when the mean level of SBP was adjusted, which was consistent with a previous study. It demonstrated that the BPV is closely related to the absolute level of BP and may act on some common pathways for WMH³⁵. The relationship between BPV and CMBs remains limited and conflicting^{15,35-37}, which need more research to identify their relationship.

An interesting finding in our present study is that the risk effect of BPV on cSVD differs by age. High variability of PP significantly affected total cSVD burden, LA, and PVS only for patients aged < 60 years old. Higher PP is related to cerebral microvascular damage; an animal experiment recently showed that its risk effect is age-dependent³⁸. The greater stiffness of cerebral arteries from old potentially protects against the negative consequences of high PP variability. It suggested that more attention for PP besides SBP and DBP for young adults is needed to reduce the risk of cSVD. For patients aged ≥ 60 years old, the risk effect of high SBP variability on total cSVD

burden and high DBP variability on LA appeared. It showed that SBP variability has an overall risk effect on cerebral small vessel disease, rather than by considering only one individual feature separately. Additionally, our data suggested that the risk effect of BP variability may be modified by hypertension status. The risk effect of high BP variability was more evident in the participants with hypertension. It may be due to the hypertension group was more likely to have high fluctuation in blood pressure, for poor medication compliance. So, BP management, including both the high absolute level and variability of BP, is crucial for hypertension patients to prevent cSVD.

For the strengths, previous studies mainly focused on some specific features of cSVD, especially for WMH, while evidence on LA and PVS is sparse. The present study explored the relationship between BPV and four features of cSVD, including LA, WMH, CMBs, and PVS, in a relatively large sample. Furthermore, we verified the overall risk effects of BPV on the total cSVD burden, which takes all features of cSVD. Novelty, we found that the risk effect of BPV on cSVD differs by age. For young adults (age<60), steady fluctuation of PP was also an important intervention target, which needs more research to confirm. From a methodological standpoint, we employ VIM as the primary measure of variability. VIM was explicitly developed as a new measure of variability uncorrelated with mean blood pressure⁵. In our multivariate model, we adjust the mean blood pressure level, indicating that BPV impacts cSVD independently of mean blood pressure. Several limitations of our study should be noted. Firstly, MRI examinations were only performed once in the current survey, so potential reverse causation remains a major issue. This study is a nested case-control study derived from a 13-year follow-up cohort, ensuring the measurement accuracy for exposure, confounders, and outcome. Additionally, our study is still in progress, and the population with no cSVD will still be followed up. The relationship between BPV and the occurrence of cSVD will be retested in future studies. Secondly, the participants receiving the MRI were a small proportion of the original cohort; there were still likely potential selection biases beyond the confounders included in the study.

Conclusions

Higher long-term visit-to-visit BP variability was an independent risk factor for cSVD, including the total cSVD burden, LA, and PVS, especially for the participants with hypertension. For young adults (age<60 years old), higher PP variability may be a more critical risk factor for cSVD than SBP and DBP.

References

1. Chojdak-Lukasiewicz J, Dziadkowiak E, Zimny A, Paradowski B. Cerebral small vessel disease: A review. *Adv Clin Exp Med*. 2021;30:349-356. doi: 10.17219/acem/131216
2. Staals J, Makin SD, Doubal FN, Dennis MS, Wardlaw JM. Stroke subtype, vascular risk factors, and total MRI brain small-vessel disease burden. *Neurology*. 2014;83:1228-1234. doi: 10.1212/wnl.0000000000000837
3. Wardlaw JM, Smith C, Dichgans M. Small vessel disease: mechanisms and clinical implications. *Lancet Neurol*. 2019;18:684-696. doi: 10.1016/s1474-4422(19)30079-1
4. Gao Y, Li D, Lin J, Thomas AM, Miao J, Chen D, Li S, Chu C. Cerebral small vessel disease: Pathological mechanisms and potential therapeutic targets. *Front Aging Neurosci*. 2022;14:961661. doi: 10.3389/fnagi.2022.961661
5. Dolan E, O'Brien E. Blood pressure variability: clarity for clinical practice. *Hypertension*. 2010;56:179-181. doi: 10.1161/hypertensionaha.110.154708
6. Kim MK, Han K, Park YM, Kwon HS, Kang G, Yoon KH, Lee SH. Associations of Variability in Blood Pressure, Glucose and Cholesterol Concentrations, and Body Mass Index With Mortality and Cardiovascular Outcomes in the General Population. *Circulation*. 2018;138:2627-2637. doi: 10.1161/circulationaha.118.034978
7. Yuan Y, Liu M, Zhang S, Lin Y, Huang Y, Zhou H, Xu X, Zhuang X, Liao X. Effect of blood pressure index on clinical outcomes in patients with heart failure and chronic kidney disease. *ESC Heart Fail*. 2023. doi: 10.1002/ehf2.14437
8. Wu S, Tian X, Xu Q, Zhang Y, Zhang X, Wang P, Chen S, Wang A. Visit-to-visit blood pressure variability and the risk of cardiovascular disease: a prospective cohort analysis. *Hypertens Res*. 2023. doi: 10.1038/s41440-023-01388-7
9. Tully PJ, Yano Y, Launer LJ, Kario K, Nagai M, Mooijaart SP, Claassen J, Lattanzi S, Vincent AD, Tzourio C. Association Between Blood Pressure Variability and Cerebral Small-Vessel Disease: A Systematic Review and Meta-Analysis. *J Am Heart Assoc*. 2020;9:e013841. doi: 10.1161/jaha.119.013841
10. Wu S, Huang Z, Yang X, Zhou Y, Wang A, Chen L, Zhao H, Ruan C, Wu Y, Xin A, et al. Prevalence of ideal cardiovascular health and its relationship with the 4-year cardiovascular events in a northern Chinese industrial city. *Circ Cardiovasc Qual Outcomes*. 2012;5:487-493. doi: 10.1161/CIRCOUTCOMES.111.963694
11. Wang A, Wu J, Zhou Y, Guo X, Luo Y, Wu S, Zhao X. Measures of adiposity and risk of stroke in China: a result from the Kailuan study. *PLoS One*. 2013;8:e61665. doi: 10.1371/journal.pone.0061665
12. Sun J, Hui Y, Li J, Zhao X, Chen Q, Li X, Wu N, Xu M, Liu W, Li R, et al. Protocol for Multi-modality MEDical imaging sTudy bAsed on KaiLuan Study (META-KLS): rationale, design and database building. *BMJ Open*. 2023;13:e067283. doi: 10.1136/bmjopen-2022-067283
13. Mena L, Pintos S, Queipo NV, Aizpúrua JA, Maestre G, Sulbarán T. A reliable index for the prognostic significance of blood pressure variability. *J Hypertens*. 2005;23:505-511. doi: 10.1097/01.hjh.0000160205.81652.5a
14. Shi H, Cui L, Hui Y, Wu S, Li X, Shu R, Song H, Wang J, Yu P, Chen S, et al. Enlarged Perivascular Spaces in Relation to Cumulative Blood Pressure Exposure and Cognitive Impairment. *Hypertension*. 2023. doi: 10.1161/hypertensionaha.123.21453

15. Ma Y, Song A, Viswanathan A, Blacker D, Vernooij MW, Hofman A, Papatheodorou S. Blood Pressure Variability and Cerebral Small Vessel Disease: A Systematic Review and Meta-Analysis of Population-Based Cohorts. *Stroke*. 2020;51:82-89. doi: 10.1161/strokeaha.119.026739
16. Yang S, Yuan J, Qin W, Yang L, Fan H, Li Y, Hu W. Twenty-four-hour ambulatory blood pressure variability is associated with total magnetic resonance imaging burden of cerebral small-vessel disease. *Clin Interv Aging*. 2018;13:1419-1427. doi: 10.2147/cia.S171261
17. de Heus RAA, Reumers SFI, van der Have A, Tumelaire M, Tully PJ, Claassen J. Day-to-Day Home Blood Pressure Variability is Associated with Cerebral Small Vessel Disease Burden in a Memory Clinic Population. *J Alzheimers Dis*. 2020;74:463-472. doi: 10.3233/jad-191134
18. Mitchell GF, van Buchem MA, Sigurdsson S, Gotal JD, Jonsdottir MK, Kjartansson Ó, Garcia M, Aspelund T, Harris TB, Gudnason V, et al. Arterial stiffness, pressure and flow pulsatility and brain structure and function: the Age, Gene/Environment Susceptibility--Reykjavik study. *Brain*. 2011;134:3398-3407. doi: 10.1093/brain/awr253
19. Abbott NJ, Rönnbäck L, Hansson E. Astrocyte-endothelial interactions at the blood-brain barrier. *Nat Rev Neurosci*. 2006;7:41-53. doi: 10.1038/nrn1824
20. Eto M, Toba K, Akishita M, Kozaki K, Watanabe T, Kim S, Hashimoto M, Sudoh N, Yoshizumi M, Ouchi Y. Reduced endothelial vasomotor function and enhanced neointimal formation after vascular injury in a rat model of blood pressure lability. *Hypertens Res*. 2003;26:991-998. doi: 10.1291/hypres.26.991
21. Wardlaw JM. Blood-brain barrier and cerebral small vessel disease. *J Neurol Sci*. 2010;299:66-71. doi: 10.1016/j.jns.2010.08.042
22. Kario K, Motai K, Mitsuhashi T, Suzuki T, Nakagawa Y, Ikeda U, Matsuo T, Nakayama T, Shimada K. Autonomic nervous system dysfunction in elderly hypertensive patients with abnormal diurnal blood pressure variation: relation to silent cerebrovascular disease. *Hypertension*. 1997;30:1504-1510. doi: 10.1161/01.hyp.30.6.1504
23. Webb AJ, Fischer U, Mehta Z, Rothwell PM. Effects of antihypertensive-drug class on interindividual variation in blood pressure and risk of stroke: a systematic review and meta-analysis. *Lancet*. 2010;375:906-915. doi: 10.1016/s0140-6736(10)60235-8
24. Alagiakrishnan K, McCracken P, Feldman H. Treating vascular risk factors and maintaining vascular health: is this the way towards successful cognitive ageing and preventing cognitive decline? *Postgrad Med J*. 2006;82:101-105. doi: 10.1136/pgmj.2005.035030
25. Yang S, Yuan J, Zhang X, Fan H, Li Y, Yin J, Hu W. Higher ambulatory systolic blood pressure independently associated with enlarged perivascular spaces in basal ganglia. *Neurol Res*. 2017;39:787-794. doi: 10.1080/01616412.2017.1324552
26. Shi H, Cui L, Hui Y, Wu S, Li X, Shu R, Song H, Wang J, Yu P, Chen S, et al. Enlarged Perivascular Spaces in Relation to Cumulative Blood Pressure Exposure and Cognitive Impairment. *Hypertension*. 2023;80:2088-2098. doi: 10.1161/hypertensionaha.123.21453
27. García-Ortiz L, Gómez-Marcos MA, Martín-Moreiras J, González-Elena LJ, Recio-Rodriguez JJ, Castaño-Sánchez Y, Grandes G, Martínez-Salgado C. Pulse pressure and nocturnal fall in blood pressure are predictors of vascular, cardiac and renal target organ damage in hypertensive patients (LOD-RISK study). *Blood Press Monit*. 2009;14:145-151. doi: 10.1097/MBP.0b013e32832e062f

28. Kamieniarz-Mędrygał M, Kaźmierski R. Significance of pulse pressure variability in predicting functional outcome in acute ischemic stroke: a retrospective, single-center, observational cohort study. *Sci Rep.* 2023;13:3618. doi: 10.1038/s41598-023-30648-2
29. Mizuhara R, Mitaki S, Takamura M, Abe S, Onoda K, Yamaguchi S, Nagai A. Pulse pressure is associated with cognitive performance in Japanese non-demented population: a cross-sectional study. *BMC Neurol.* 2022;22:137. doi: 10.1186/s12883-022-02666-6
30. Sha T, Cheng W, Yan Y. Prospective associations between pulse pressure and cognitive performance in Chinese middle-aged and older population across a 5-year study period. *Alzheimers Res Ther.* 2018;10:29. doi: 10.1186/s13195-018-0355-1
31. Havlik RJ, Foley DJ, Sayer B, Masaki K, White L, Launer LJ. Variability in midlife systolic blood pressure is related to late-life brain white matter lesions: the Honolulu-Asia Aging study. *Stroke.* 2002;33:26-30. doi: 10.1161/hs0102.101890
32. Leung LY, Bartz TM, Rice K, Floyd J, Psaty B, Gutierrez J, Longstreth WT, Jr., Mukamal KJ. Blood Pressure and Heart Rate Measures Associated With Increased Risk of Covert Brain Infarction and Worsening Leukoaraiosis in Older Adults. *Arterioscler Thromb Vasc Biol.* 2017;37:1579-1586. doi: 10.1161/atvbaha.117.309298
33. Tsukishima E, Saito H, Shido K, Kobashi G, Ying-Yan G, Kishi R, Niino M, Kondo K, Sugimura I. Long-term blood pressure variability and cerebrovascular changes on CT in a community-based elderly population. *J Epidemiol.* 2001;11:190-198. doi: 10.2188/jea.11.190
34. Brickman AM, Reitz C, Luchsinger JA, Manly JJ, Schupf N, Muraskin J, DeCarli C, Brown TR, Mayeux R. Long-term blood pressure fluctuation and cerebrovascular disease in an elderly cohort. *Arch Neurol.* 2010;67:564-569. doi: 10.1001/archneurol.2010.70
35. Sabayan B, Wijsman LW, Foster-Dingley JC, Stott DJ, Ford I, Buckley BM, Sattar N, Jukema JW, van Osch MJ, van der Grond J, et al. Association of visit-to-visit variability in blood pressure with cognitive function in old age: prospective cohort study. *Bmj.* 2013;347:f4600. doi: 10.1136/bmj.f4600
36. Ma Y, Yilmaz P, Bos D, Blacker D, Viswanathan A, Ikram MA, Hofman A, Vernooij MW, Ikram MK. Blood Pressure Variation and Subclinical Brain Disease. *J Am Coll Cardiol.* 2020;75:2387-2399. doi: 10.1016/j.jacc.2020.03.043
37. Bao Y, Gu J, Lv T, Chen M, Zhao K, Yang Y, Gu D. Correlation between blood pressure variability and deep cerebral microbleeds in patients with acute ischemic stroke. *Folia Neuropathol.* 2023;61:309-316. doi: 10.5114/fn.2023.130006
38. Winder NR, Reeve EH, Kronquist EK, Khurana A, Lee B, Nguyen T, Henson GD, Walker AE. High pulse pressure impairs cerebral artery endothelial function in young, but not old, mice. *Exp Gerontol.* 2023;173:112101. doi: 10.1016/j.exger.2023.112101

Figure legends

Figure 1. The flow chart of the study participants

Abbreviations: Cerebral small vessel disease (cSVD) white matter hyperintensities (WMHs), lacunae of presumed vascular origin (LA), cerebral microbleeds (CMBs), visible perivascular spaces (PVS) , magnetic resonance (MR), and blood pressure (BP).

Figure 2. The associations between BP variability, total cSVD burden, and typical features of cSVD.

Abbreviations: Cerebral small vessel disease (cSVD) white matter hyperintensities (WMHs), lacunae of presumed vascular origin (LA), cerebral microbleeds (CMBs), and visible perivascular spaces (PVS), systolic blood pressure (SBP), diastolic blood pressure (DBP), and pulse pressure (PP).

Adjusted OR: Adjusted for baseline age (2020-2022 survey), gender, education level, drinking status, smoking status, physical activity level, baseline BMI, diabetes, TG, HDL, LDL level and the mean value of SBP, DBP, or PP when the exposure was the corresponding variability of the BP indicator.

Figure 3. The associations between BP variability, total cSVD burden, and typical features of cSVD by age groups.

Abbreviations: Cerebral small vessel disease (cSVD) white matter hyperintensities (WMHs), lacunae of presumed vascular origin (LA), cerebral microbleeds (CMBs), and visible perivascular spaces (PVS), systolic blood pressure (SBP), diastolic blood pressure (DBP), and pulse pressure (PP).

Adjusted OR: Adjusted for gender, education level, drinking status, smoking status, physical activity level, baseline BMI, diabetes, TG, HDL, LDL level and the mean value of SBP, DBP, or PP when the exposure was the corresponding variability of the BP indicator.

Figure 4. The associations between BP variability, total cSVD burden, and typical features of cSVD by gender.

Abbreviations: Cerebral small vessel disease (cSVD) white matter hyperintensities (WMHs), lacunae of presumed vascular origin (LA), cerebral microbleeds (CMBs), and visible perivascular spaces (PVS), systolic blood pressure (SBP), diastolic blood pressure (DBP), and pulse pressure (PP).

Adjusted OR: Adjusted for baseline age (2020-2022 survey), education level, drinking status, smoking status, physical activity level, baseline BMI, diabetes, TG, HDL, LDL level and the mean value of SBP, DBP, or PP when the exposure was the corresponding variability of the BP indicator.

Figure 5. The associations between BP variability, total cSVD burden, and typical features of cSVD by hypertension status.

Abbreviations: Cerebral small vessel disease (cSVD) white matter hyperintensities (WMHs), lacunae of presumed vascular origin (LA), cerebral microbleeds (CMBs), and visible perivascular spaces (PVS), systolic blood pressure (SBP), diastolic blood pressure (DBP), and pulse pressure (PP).

Adjusted OR: Adjusted for baseline age (2020-2022 survey), education level, drinking status, smoking status, physical activity level, baseline BMI, diabetes, TG, HDL, LDL level and the mean value of SBP, DBP, or PP when the exposure was the corresponding variability of the BP indicator.

Table1. Baseline characteristics of subjects with different levels of cSVD

Variables	All (N=12 84)	non-cSVD (N=394)	mild cSVD (N=415)	moderate cSVD (N=252)	severe cSVD (N=223)	<i>p</i> value
Age (n, %)						
18-59 years old	795(6 1.9)	368(93.4)	280(67.5)	98(38.9)	49(22.0)	<0.001
≥60 years old	489(3 8.1)	26(6.6)	135(32.5)	154(61.1)	174(78.0)	
Male (n, %)	678(5 2.8)	156(39.6)	198(47.7)	154(61.1)	170(76.2)	<0.001
Follow-up duration, years (mean±SD)	13.1± 3.0	13.0±2.8	13.1±3.1	13.0±3.2	13.3±2.8	0.691
Education level (%)						<0.001
Junior high school or below	521(4 0.6)	88(22.3)	153(36.9)	138(54.8)	142(63.7)	
Senior high school	258(2 0.1)	81(20.6)	90(21.7)	49(19.4)	38(17.0)	
College and above	505(3 9.3)	225(57.1)	172(41.4)	65(25.8)	43(19.3)	
Physical activity level (n, %)						
Inactive	173(1 3.5)	68(17.3)	54(13.0)	26(10.3)	25(11.2)	<0.001
Moderate	972(7 5.7)	302(76.6)	319(76.9)	187(74.2)	164(73.5)	
Frequently	139(1 0.8)	24(6.1)	42(10.1)	39(15.5)	34(15.3)	
Smoking status (n, %)						
Never	921(7 1.7)	316(80.2)	311(75.0)	167(66.3)	127(56.9)	<0.001
Past	51(4.0)	11(2.8)	12(2.9)	16(6.3)	12(5.4)	
Current	312(2 4.3)	67(17.0)	92(22.1)	69(27.4)	84(37.7)	
Drinking status (n, %)						
Never	727(5 6.6)	237(60.1)	248(59.8)	142(56.3)	100(44.8)	<0.001
Past	20(1.6)	3(0.8)	3(0.7)	4(1.6)	10(4.5)	
Current	537(4 1.8)	154(39.1)	164(39.5)	106(42.1)	113(50.7)	

Diabetes (n, %)	199(15.5)	33(8.4)	47(11.3)	58(23.0)	61(27.4)	<0.001
Hypertension (n, %)	724(56.4)	138(35.0)	219(52.8)	179(71.0)	188(84.3)	<0.001
BMI, kg/m ² (mean±SD)	25.3±3.5	25.1±3.7	25.2±3.5	25.7±3.2	25.7±3.4	0.048
TG, mmol/L [median(p25,p75)]	1.3(2.6,3.7)	1.3(0.9,2.0)	1.4(1.0,2.0)	1.4(1.0,2.1)	1.4(1.0,2.0)	0.875
HDL-c, mmol/L (mean±SD)	1.5±0.4	1.5±0.4	1.5±0.4	1.4±0.3	1.4±0.4	<0.001
LDL-c, mmol/L (mean±SD)	3.2±0.8	3.1±0.8	3.3±0.8	3.2±0.8	3.1±0.9	0.001

Abbreviations: cSVD: cerebral small vessel disease; non-cSVD: if the total burden is zero; mild cSVD: if the total burden is one; moderate cSVD: if the total burden is 2; and severe cSVD: if the total burden is 3 or 4; BMI: body mass index; TG: triglycerides; HDL-c: high-density lipoprotein cholesterol; LDL-c: low-density lipoprotein cholesterol.

Table2. Sensitivity analysis for the estimated association between variability of BP and cSVD burden

group	n/N	unadjusted OR (95%CI)	p value	age- and gender- adjusted OR (95%CI)	p value	multi adjusted OR ₁ (95%CI)	p value	multi adjusted OR ₂ (95%CI)	p value
VIM of SBP									
using original data	non vs mild cSVD burden								
	low	101/217	reference	-	reference	-	reference	-	-
	middle	214/403	1.30(0.93-1.81)	0.120	1.32(0.93-1.86)	0.120	1.13(0.77-1.64)	0.535	1.17(0.79-1.71) 0.433
	high	100/189	1.29(0.87-1.91)	0.201	1.40(0.93-2.12)	0.109	1.16(0.74-1.82)	0.506	1.18(0.75-1.87) 0.467
	non vs mild cSVD burden								
	low	47/163	reference	-	reference	-	reference	-	-
	middle	139/328	1.81(1.21-2.72)	0.004	1.81(1.16-2.83)	0.010	1.56(0.96-2.53)	0.076	1.60(0.97-2.64) 0.064
	high	66/155	1.83(1.15-2.91)	0.011	2.06(1.22-3.48)	0.007	1.75(0.99-3.09)	0.052	1.85(1.03-3.30) 0.038
	non vs severe cSVD burden								
	low	52/168	reference	-	reference	-	reference	-	-
	middle	102/291	1.20(0.80-1.81)	0.371	1.20(0.74-1.96)	0.454	1.01(0.59-1.71)	0.977	0.93(0.54-1.63) 0.809

	high	69/158	1.73(1.10-2.72)	0.018	2.01(1.15-3.51)	0.014	1.51(0.82-2.77)	0.183	1.70(0.90-3.22)	0.101
VIM of DBP										
non vs mild cSVD burden										
low		109/217	reference	-	reference	-	reference	-	reference	-
middle		204/401	1.03(0.74-1.43)	0.879	0.93(0.66-1.32)	0.695	0.84(0.58-1.22)	0.361	0.81(0.55-1.18)	0.271
high		102/191	1.14(0.77-1.68)	0.522	0.93(0.62-1.40)	0.735	0.89(0.57-1.40)	0.622	0.93(0.59-1.46)	0.742
non vs mild cSVD burden										
low		54/162	reference	-	reference	-	reference	-	reference	-
middle		138/335	1.40(0.95-2.07)	0.092	1.21(0.78-1.88)	0.388	1.05(0.66-1.68)	0.845	0.98(0.60-1.60)	0.943
high		60/149	1.35(0.85-2.14)	0.205	0.97(0.58-1.64)	0.917	0.94(0.54-1.65)	0.828	1.02(0.57-1.82)	0.955
non vs severe cSVD burden										
low		44/152	reference	-	reference	-	reference	-	reference	-
middle		112/309	1.40(0.92-2.12)	0.120	1.24(0.75-2.05)	0.395	1.05(0.61-1.79)	0.868	0.99(0.56-1.74)	0.973
high		67/156	1.85(1.15-2.96)	0.011	1.34(0.75-2.37)	0.321	1.23(0.66-2.30)	0.513	1.44(0.75-2.75)	0.272
VIM of PP										
non vs mild cSVD burden										

	low	103/21 4	reference	-	reference	-	reference	-	reference	-
	middle	206/41 3	1.07(0.77-1.4 9)	0.678	1.02(0.72-1.4 4)	0.923	0.88(0.60-1.2 8)	0.49 1	0.87(0.60-1.2 7)	0.478
	high	106/18 2	1.50(1.01-2.2 4)	0.045	1.54(1.01-2.3 5)	0.044	1.37(0.86-2.1 8)	0.18 3	1.37(0.86-2.1 9)	0.184
	non vs mild cSVD burden									
	low	53/164	reference	-	reference	-	reference	-	reference	-
	middle	123/33 0	1.24(0.84-1.8 5)	0.279	1.09(0.70-1.6 9)	0.698	0.93(0.58-1.4 9)	0.75 3	0.93(0.58-1.5 0)	0.765
	high	76/152	2.09(1.33-3.3 0)	0.001	2.02(1.21-3.3 8)	0.007	1.64(0.94-2.8 8)	0.08 2	1.68(0.95-2.9 5)	0.073
	non vs severe cSVD burden									
	low	42/153	reference	-	reference	-	reference	-	reference	-
	middle	114/32 1	1.46(0.95-2.2 2)	0.082	1.22(0.74-2.0 1)	0.435	1.09(0.63-1.8 6)	0.76 0	1.18(0.67-2.0 6)	0.570
	high	67/143	2.33(1.44-3.7 8)	0.001	2.13(1.19-3.8 0)	0.011	1.76(0.94-3.3 1)	0.07 7	2.16(1.13-4.1 4)	0.020
VIM of SBP										
no diabetes	non vs mild cSVD burden									
	low	89/199	reference	-	reference	-	reference	-	reference	-
	middle	191/36 5	1.36(0.96-1.9 2)	0.085	1.34(0.94-1.9 3)	0.107	1.34(0.93-1.9 3)	0.12 2	1.36(0.93-1.9 8)	0.111
	high	88/165	1.41(0.93-2.1	0.102	1.54(1.00-2.3	0.052	1.43(0.91-2.2	0.12	1.43(0.91-2.2	0.124

		4)		9)		3)	2	6)	
non vs mild cSVD burden									
low	40/150	reference	-	reference	-	reference	-	reference	-
middle	104/27 8	1.64(1.06-2.5 4)	0.025	1.58(0.98-2.5 6)	0.062	1.44(0.88-2.3 6)	0.14 5	1.46(0.88-2.4 2)	0.141
high	50/127	1.79(1.07-2.9 7)	0.025	2.12(1.20-3.7 5)	0.010	1.84(1.02-3.3 1)	0.04 2	1.98(1.08-3.6 1)	0.027
non vs severe cSVD burden									
low	33/143	reference	-	reference	-	reference	-	reference	-
middle	69/243	1.32(0.82-2.1 3)	0.253	1.22(0.70-2.1 3)	0.483	1.06(0.60-1.8 9)	0.84 1	0.97(0.53-1.7 9)	0.933
high	60/137	2.60(1.55-4.3 5)	<0.00 1	3.12(1.67-5.8 0)	<0.00 1	2.42(1.26-4.6 3)	0.00 8	2.68(1.35-5.3 3)	0.005
VIM of DBP									
non vs mild cSVD burden									
low	99/202	reference	-	reference	-	reference	-	reference	-
middle	180/35 4	1.08(0.76-1.5 2)	0.677	1.04(0.73-1.4 8)	0.837	1.00(0.69-1.4 4)	0.99 7	0.96(0.67-1.3 9)	0.835
high	89/173	1.10(0.73-1.6 5)	0.638	0.98(0.64-1.4 9)	0.911	0.97(0.63-1.5 0)	0.89 1	0.97(0.62-1.5 0)	0.877
non vs mild cSVD burden									
low	44/147	reference	-	reference	-	reference	-	reference	-
middle	103/27 7	1.39(0.90-2.1 3)	0.136	1.30(0.81-2.0 9)	0.274	1.22(0.75-1.9 8)	0.42 0	1.14(0.70-1.8 8)	0.597

high	47/131	1.31(0.79-2.16)	0.292	1.05(0.60-1.85)	0.854	1.03(0.58-1.83)	0.921	1.07(0.59-1.94)	0.820
non vs severe cSVD burden									
low	31/134	reference	-	reference	-	reference	-	reference	-
middle	83/257	1.58(0.98-2.56)	0.060	1.48(0.85-2.58)	0.167	1.36(0.76-2.43)	0.294	1.21(0.67-2.20)	0.533
high	48/132	1.90(1.11-3.24)	0.019	1.46(0.78-2.76)	0.241	1.39(0.72-2.69)	0.323	1.51(0.76-2.98)	0.236
VIM of PP									
non vs mild cSVD burden									
low	89/194	reference	-	reference	-	reference	-	reference	-
middle	190/381	1.17(0.83-1.66)	0.365	1.09(0.76-1.57)	0.625	1.09(0.76-1.58)	0.637	1.10(0.76-1.60)	0.607
high	89/154	1.62(1.05-2.48)	0.028	1.66(1.06-2.60)	0.028	1.65(1.04-2.62)	0.033	1.69(1.06-2.69)	0.026
non vs mild cSVD burden									
low	42/147	reference	-	reference	-	reference	-	reference	-
middle	98/289	1.28(0.83-1.98)	0.260	1.13(0.70-1.83)	0.610	1.18(0.72-1.93)	0.501	1.23(0.75-2.02)	0.414
high	54/119	2.08(1.25-3.45)	0.005	2.10(1.18-3.73)	0.012	2.17(1.20-3.93)	0.010	2.31(1.27-4.21)	0.006
non vs severe cSVD burden									
low	31/136	reference	-	reference	-	reference	-	reference	-
middle	77/268	1.37(0.84-2.2)	0.204	1.17(0.67-2.0)	0.591	1.27(0.71-2.2)	0.41	1.47(0.80-2.7)	0.213

			1)		4)		7)	4	0)	
	high	54/119	2.81(1.64-4.83)	<0.001	2.63(1.38-5.03)	0.003	2.81(1.43-5.51)	0.003	3.51(1.73-7.10)	<0.001
	VIM of SBP									
	non vs mild cSVD burden									
	low	81/179	reference	-	reference	-	reference	-	reference	-
	middle	147/308	1.10(0.76-1.60)	0.598	1.15(0.79-1.69)	0.461	1.16(0.78-1.72)	0.468	1.19(0.80-1.78)	0.395
	high	71/143	1.19(0.77-1.85)	0.432	1.22(0.77-1.93)	0.403	1.13(0.70-1.82)	0.619	1.15(0.71-1.87)	0.564
	non vs mild cSVD burden									
no antihypertensive medications users	low	27/125	reference	-	reference	-	reference	-	reference	-
	middle	74/235	1.67(1.00-2.77)	0.048	1.86(1.06-3.26)	0.03	1.73(0.97-3.08)	0.062	1.81(1.01-3.26)	0.047
	high	38/110	1.91(1.07-3.42)	0.028	2.01(1.05-3.85)	0.036	1.74(0.88-3.43)	0.11	1.90(0.96-3.77)	0.067
	non vs severe cSVD burden									
	low	24/122	reference	-	reference	-	reference	-	reference	-
	middle	43/204	1.09(0.62-1.91)	0.761	1.25(0.66-2.40)	0.494	1.09(0.55-2.15)	0.8	1.17(0.58-2.38)	0.661
	high	27/99	1.53(0.82-2.87)	0.184	1.60(0.76-3.36)	0.214	1.07(0.48-2.38)	0.861	1.42(0.63-3.21)	0.401
	VIM of DBP									
	non vs mild cSVD burden									

low	87/182	reference	-	reference	-	reference	-	reference	-
middle	147/314	0.96(0.67-1.39)	0.832	0.92(0.63-1.34)	0.66	0.92(0.63-1.36)	0.682	0.92(0.62-1.35)	0.657
high	65/134	1.03(0.66-1.61)	0.901	0.87(0.55-1.40)	0.569	0.89(0.55-1.44)	0.632	0.93(0.57-1.52)	0.783
non vs mild cSVD burden									
low	35/130	reference	-	reference	-	reference	-	reference	-
middle	74/241	1.20(0.75-1.93)	0.446	1.11(0.65-1.88)	0.699	1.02(0.59-1.74)	0.954	1.07(0.62-1.85)	0.812
high	30/99	1.18(0.66-2.10)	0.574	0.87(0.45-1.68)	0.674	0.85(0.43-1.68)	0.642	0.99(0.50-1.98)	0.978
non vs severe cSVD burden									
low	24/119								
middle	48/215	1.14(0.66-1.97)	0.646	1.06(0.56-2.01)	0.859	0.92(0.47-1.79)	0.813	0.96(0.49-1.89)	0.912
high	22/91	1.26(0.65-2.43)	0.487	0.92(0.42-1.99)	0.828	0.79(0.35-1.80)	0.579	1.03(0.45-2.38)	0.943
VIM of PP									
non vs mild cSVD burden									
low	74/167	reference	-	reference	-	reference	-	reference	-
middle	147/322	1.06(0.72-1.54)	0.778	0.99(0.67-1.47)	0.978	1.00(0.67-1.49)	0.989	1.01(0.68-1.50)	0.961
high	78/141	1.56(0.99-2.44)	0.055	1.44(0.90-2.30)	0.133	1.42(0.87-2.30)	0.161	1.45(0.89-2.37)	0.133

non vs mild cSVD burden									
low	24/117	reference	-	reference	-	reference	-	reference	-
middle	72/247	1.59(0.94-2.70)	0.082	1.45(0.81-2.59)	0.206	1.49(0.82-2.69)	0.188	1.51(0.84-2.73)	0.172
high	43/106	2.64(1.46-4.79)	0.001	2.19(1.12-4.26)	0.021	2.02(1.02-4.02)	0.045	2.13(1.07-4.24)	0.031
non vs severe cSVD burden									
low	19/112	reference	-	reference	-	reference	-	reference	-
middle	47/222	1.31(0.73-2.37)	0.363	1.21(0.61-2.40)	0.582	1.45(0.71-2.96)	0.309	1.51(0.72-3.14)	0.276
high	28/91	2.18(1.12-4.23)	0.022	1.67(0.76-3.65)	0.2	1.53(0.67-3.49)	0.315	1.71(0.74-3.98)	0.211

Note:

multi adjusted OR₁: was adjusted age, gender, education level, drinking status, smoking status, physical activity level, baseline BMI, diabets, TG, HDL, and LDL level;

multi adjusted OR₂: based on the adjusted OR₁, and further adjusted mean value of SBP, DBP, or PP when the exposure was the corresponding variability of BP indicator.

BP variability was categorized into three groups (< p25 as low, p25-p75 as middle, or ≥ p75 as high).

Abbreviations: VIM: variability independent of the mean; SBP: Systolic blood pressure;DBP: diastolic blood pressure; PP: pulse pressure; cSVD: cerebral small vessel disease; non-cSVD: if the total burden is zero; mild cSVD:if the total burden is one; moderate cSVD: if the total burden is 2; and severe cSVD: if the total burden is 3 or 4.

Table 3. Sensitivity analysis for the estimated association between variability of BP and different markers of cSVD

Outcomes	group	n/N	unadjusted OR (95%CI)	<i>p</i> value	age- and gend er- adjusted O R (95%CI)	<i>p</i> value	multi adjusted OR ₁ (95%CI)	<i>p</i> value	multi adjusted OR ₂ (95%CI)	<i>p</i> value
using original data										
LA	VIM of SBP									
	low	45/316	reference	-	reference	-	reference	-	reference	-
	middle	99/644	1.09(0.75-1.60)	0.645	1.04(0.69-1.57)	0.863	0.99(0.64-1.54)	0.966	0.89(0.56-1.40)	0.613
	high	68/324	1.60(1.06-2.42)	0.026	1.64(1.04-2.59)	0.034	1.39(0.85-2.29)	0.190	1.48(0.89-2.45)	0.132
	VIM of DBP									
	low	39/315	reference	-	reference	-	reference	-	reference	-
	middle	106/651	1.38(0.93-2.04)	0.113	1.32(0.86-2.03)	0.203	1.17(0.74-1.84)	0.510	1.16(0.73-1.85)	0.526
	high	67/318	1.89(1.23-2.90)	0.004	1.76(1.10-2.83)	0.019	1.59(0.96-2.65)	0.071	1.77(1.06-2.97)	0.030
	VIM of PP									
	low	39/309	reference	-	reference	-	reference	-	reference	-
	middle	108/650	1.38(0.93-2.05)	0.110	1.25(0.82-1.92)	0.296	1.20(0.77-1.88)	0.422	1.29(0.81-2.06)	0.276
	high	65/325	1.73(1.12-2.67)	0.013	1.48(0.92-2.37)	0.106	1.30(0.79-2.14)	0.302	1.56(0.93-2.60)	0.092
CMBs	VIM of SBP									
	low	87/316	reference	-	reference	-	reference	-	reference	-
	middle	168/644	0.93(0.69-1.26)	0.634	0.86(0.63-1.19)	0.373	0.78(0.55-1.10)	0.153	0.75(0.53-1.06)	0.104
	high	96/324	1.11(0.79-1.56)	0.557	1.06(0.73-1.53)	0.773	0.94(0.64-1.39)	0.754	0.97(0.65-1.44)	0.873
	VIM of DBP									

WMH		low	78/315	reference	-	reference	-	reference	-	reference	-
		middle	175/651	1.12(0.82-1.52)	0.483	1.02(0.73-1.42)	0.909	0.95(0.67-1.34)	0.766	0.93(0.66-1.32)	0.694
		high	98/318	1.35(0.95-1.92)	0.090	1.16(0.80-1.69)	0.440	1.09(0.73-1.62)	0.683	1.15(0.77-1.72)	0.492
		VIM of PP									
		low	78/309	reference	-	reference	-	reference	-	reference	-
		middle	171/650	1.06(0.78-1.44)	0.725	0.94(0.67-1.31)	0.708	0.85(0.60-1.21)	0.370	0.86(0.61-1.23)	0.412
		high	102/325	1.35(0.96-1.92)	0.087	1.14(0.79-1.66)	0.484	1.06(0.72-1.57)	0.770	1.12(0.76-1.67)	0.559
		VIM of SBP									
		low	73/316	reference	-	reference	-	reference	-	reference	-
		middle	181/644	1.30(0.95-1.78)	0.099	1.25(0.89-1.75)	0.198	1.17(0.81-1.68)	0.408	1.11(0.77-1.60)	0.583
PVS		high	92/324	1.32(0.92-1.88)	0.126	1.22(0.83-1.80)	0.315	1.06(0.70-1.61)	0.779	1.07(0.70-1.63)	0.758
		VIM of DBP									
		low	78/315	reference	-	reference	-	reference	-	reference	-
		middle	179/651	1.15(0.85-1.57)	0.368	1.03(0.74-1.44)	0.863	0.95(0.67-1.36)	0.791	0.93(0.65-1.34)	0.710
		high	89/318	1.18(0.83-1.68)	0.357	0.91(0.61-1.34)	0.624	0.83(0.54-1.25)	0.371	0.86(0.56-1.32)	0.495
		VIM of PP									
		low	72/309	reference	-	reference	-	reference	-	reference	-
		middle	175/650	1.21(0.88-1.66)	0.231	1.04(0.74-1.47)	0.821	0.95(0.66-1.37)	0.786	0.98(0.67-1.42)	0.905
		high	99/325	1.44(1.01-2.05)	0.043	1.15(0.78-1.69)	0.487	1.03(0.68-1.55)	0.892	1.10(0.73-1.68)	0.642
		VIM of SBP									
	low	175/316	reference	-	reference	-	reference	-	reference	-	
	middle	395/644	1.28(0.97-1.68)	0.078	1.25(0.92-1.71)	0.156	1.13(0.81-1.59)	0.473	1.14(0.80-1.62)	0.462	
	high	215/324	1.59(1.15-2.19)	0.005	1.74(1.20-2.52)	0.003	1.55(1.04-2.32)	0.030	1.63(1.08-2.46)	0.020	
	VIM of DBP										

	low	173/315	reference	-	reference	-	reference	-	reference	-
	middle	405/651	1.35(1.03-1.77)	0.030	1.22(0.89-1.66)	0.215	1.16(0.83-1.61)	0.387	1.12(0.79-1.58)	0.530
	high	207/318	1.53(1.11-2.11)	0.009	1.22(0.84-1.76)	0.301	1.27(0.85-1.88)	0.243	1.38(0.91-2.09)	0.128
	VIM of PP									
	low	169/309	reference	-	reference	-	reference	-	reference	-
	middle	393/650	1.27(0.96-1.67)	0.090	1.14(0.83-1.56)	0.411	1.05(0.75-1.48)	0.757	1.06(0.75-1.49)	0.749
	high	223/325	1.81(1.31-2.50)	<0.001	1.75(1.20-2.54)	0.003	1.58(1.05-2.37)	0.028	1.62(1.08-2.45)	0.021
no diabetes										
LA	VIM of SBP									
	low	31/272	reference	-	reference	-	reference	-	reference	-
	middle	66/538	1.09(0.69-1.71)	0.719	0.97(0.60-1.58)	0.906	0.89(0.54-1.46)	0.633	0.78(0.46-1.31)	0.347
	high	54/275	1.90(1.18-3.06)	0.009	1.87(1.11-3.16)	0.019	1.59(0.92-2.73)	0.095	1.64(0.93-2.89)	0.086
	VIM of DBP									
	low	27/277	reference	-	reference	-	reference	-	reference	-
	middle	77/540	1.54(0.97-2.45)	0.069	1.44(0.88-2.37)	0.145	1.40(0.84-2.33)	0.201	1.29(0.76-2.17)	0.343
	high	47/268	1.97(1.19-3.27)	0.009	1.78(1.03-3.08)	0.038	1.71(0.97-2.99)	0.062	1.82(1.02-3.24)	0.041
	VIM of PP									
	low	31/267	reference	-	reference	-	reference	-	reference	-
	middle	72/556	1.13(0.72-1.77)	0.587	1.04(0.64-1.68)	0.876	1.12(0.68-1.83)	0.660	1.22(0.73-2.04)	0.445
	high	48/262	1.71(1.05-2.78)	0.032	1.41(0.82-2.40)	0.212	1.46(0.84-2.55)	0.178	1.72(0.97-3.05)	0.062
CMBs	VIM of SBP									
	low	59/272	reference	-	reference	-	reference	-	reference	-
	middle	125/538	1.09(0.77-1.55)	0.621	1.00(0.69-1.45)	0.983	0.95(0.65-1.39)	0.803	0.93(0.64-1.36)	0.706
	high	81/275	1.51(1.02-2.22)	0.038	1.41(0.93-2.14)	0.101	1.29(0.85-1.98)	0.235	1.31(0.85-2.02)	0.215

WMH	VIM of DBP									
	low	60/277	reference	-	reference	-	reference	-	reference	-
	middle	131/540	1.16(0.82-1.64)	0.406	1.06(0.74-1.53)	0.739	1.04(0.72-1.51)	0.821	1.01(0.69-1.47)	0.961
	high	74/268	1.38(0.93-2.04)	0.107	1.18(0.78-1.80)	0.426	1.14(0.75-1.74)	0.546	1.18(0.77-1.81)	0.443
	VIM of PP									
	low	54/267	reference	-	reference	-	reference	-	reference	-
	middle	129/556	1.19(0.83-1.70)	0.337	1.09(0.75-1.59)	0.654	1.10(0.75-1.62)	0.615	1.15(0.78-1.70)	0.484
	high	82/262	1.80(1.21-2.67)	0.004	1.55(1.02-2.38)	0.042	1.58(1.02-2.44)	0.039	1.66(1.07-2.58)	0.023
	VIM of SBP									
	low	55/272	reference	-	reference	-	reference	-	reference	-
	middle	132/538	1.28(0.90-1.83)	0.169	1.18(0.81-1.73)	0.396	1.10(0.74-1.63)	0.638	1.05(0.70-1.56)	0.820
	high	81/275	1.65(1.11-2.44)	0.013	1.54(1.00-2.37)	0.050	1.34(0.86-2.10)	0.193	1.33(0.85-2.10)	0.216
	VIM of DBP									
	low	62/277	reference	-	reference	-	reference	-	reference	-
	middle	138/540	1.19(0.85-1.68)	0.318	1.08(0.74-1.56)	0.693	0.99(0.68-1.45)	0.962	0.94(0.64-1.39)	0.769
	high	68/268	1.18(0.79-1.75)	0.413	0.95(0.61-1.46)	0.801	0.90(0.58-1.40)	0.646	0.92(0.59-1.45)	0.732
PVS	VIM of PP									
	low	57/267	reference	-	reference	-	reference	-	reference	-
	middle	131/556	1.14(0.80-1.62)	0.479	1.00(0.68-1.47)	0.990	1.02(0.69-1.51)	0.925	1.08(0.72-1.61)	0.708
	high	80/262	1.62(1.09-2.40)	0.016	1.32(0.85-2.04)	0.211	1.30(0.83-2.03)	0.255	1.39(0.88-2.20)	0.153
	VIM of SBP									
	low	141/272	reference	-	reference	-	reference	-	reference	-
	middle	315/538	1.31(0.98-1.76)	0.069	1.27(0.92-1.77)	0.151	1.21(0.86-1.70)	0.267	1.21(0.85-1.72)	0.293
	high	178/275	1.70(1.21-2.40)	0.002	1.84(1.24-2.72)	0.002	1.64(1.09-2.45)	0.017	1.69(1.11-2.57)	0.015

VIM of DBP

low	145/277	reference	-	reference	-	reference	-	reference	-
middle	326/540	1.39(1.04-1.86)	0.028	1.30(0.94-1.81)	0.113	1.27(0.91-1.77)	0.165	1.20(0.85-1.70)	0.290
high	163/268	1.41(1.01-1.99)	0.046	1.19(0.81-1.75)	0.386	1.19(0.80-1.76)	0.399	1.23(0.82-1.85)	0.326

VIM of PP

low	140/267	reference	-	reference	-	reference	-	reference	-
middle	321/556	1.24(0.92-1.66)	0.152	1.14(0.82-1.58)	0.443	1.17(0.83-1.64)	0.365	1.21(0.85-1.70)	0.289
high	173/262	1.76(1.24-2.50)	0.002	1.69(1.13-2.53)	0.011	1.69(1.12-2.55)	0.013	1.77(1.16-2.71)	0.008

no antihypertensive medications users

LA

VIM of SBP

low	17/230	reference	-	reference	-	reference	-	reference	-
middle	38/425	1.23(0.68-2.23)	0.496	1.26(0.67-2.36)	0.466	1.18(0.61-2.28)	0.625	1.22(0.63-2.37)	0.557
high	24/208	1.63(0.85-3.14)	0.14	1.61(0.80-3.23)	0.179	1.22(0.58-2.58)	0.604	1.49(0.71-3.13)	0.293

VIM of DBP

low	18/241	reference	-	reference	-	reference	-	reference	-
middle	40/436	1.25(0.70-2.23)	0.449	1.24(0.67-2.28)	0.497	1.14(0.60-2.17)	0.683	1.19(0.63-2.28)	0.589
high	21/186	1.58(0.81-3.05)	0.177	1.58(0.77-3.21)	0.21	1.42(0.67-3.01)	0.359	1.70(0.79-3.62)	0.172

VIM of PP

low	15/210	reference	-	reference	-	reference	-	reference	-
middle	42/441	1.37(0.74-2.53)	0.317	1.35(0.70-2.58)	0.371	1.66(0.84-3.30)	0.145	1.67(0.84-3.32)	0.145
high	22/212	1.50(0.76-2.99)	0.243	1.19(0.57-2.49)	0.636	1.10(0.51-2.41)	0.804	1.17(0.54-2.53)	0.693

CMBs

VIM of SBP

low	51/230	reference	-	reference	-	reference	-	reference	-
middle	89/425	0.93(0.63-1.37)	0.713	0.92(0.61-1.38)	0.686	0.90(0.59-1.36)	0.609	0.91(0.60-1.39)	0.672

WMH	high	48/208	1.05(0.67-1.65)	0.821	0.96(0.60-1.55)	0.881	0.87(0.53-1.42)	0.58	0.94(0.58-1.54)	0.808
	VIM of DBP									
	low	51/241	reference	-	reference	-	reference	-	reference	-
	middle	90/436	0.97(0.66-1.43)	0.873	0.91(0.61-1.36)	0.644	0.87(0.58-1.31)	0.509	0.89(0.59-1.34)	0.573
	high	47/186	1.26(0.80-1.98)	0.317	1.09(0.67-1.77)	0.721	1.00(0.61-1.64)	0.999	1.09(0.66-1.78)	0.739
	VIM of PP									
	low	46/210	reference	-	reference	-	reference	-	reference	-
	middle	89/441	0.90(0.60-1.35)	0.612	0.80(0.52-1.22)	0.298	0.82(0.53-1.26)	0.355	0.81(0.53-1.25)	0.344
	high	53/212	1.19(0.76-1.87)	0.453	0.93(0.57-1.50)	0.764	0.89(0.54-1.46)	0.643	0.90(0.55-1.47)	0.678
	VIM of SBP									
	low	39/230	reference	-	reference	-	reference	-	reference	-
	middle	92/425	1.35(0.89-2.05)	0.153	1.41(0.90-2.20)	0.129	1.31(0.83-2.06)	0.248	1.34(0.84-2.13)	0.214
	high	41/208	1.20(0.74-1.95)	0.457	1.10(0.66-1.86)	0.711	0.90(0.52-1.55)	0.706	0.99(0.57-1.72)	0.979
	VIM of DBP									
	low	52/241	reference	-	reference	-	reference	-	reference	-
PVS	middle	89/436	0.93(0.63-1.37)	0.721	0.85(0.56-1.29)	0.452	0.77(0.50-1.18)	0.229	0.80(0.52-1.23)	0.309
	high	31/186	0.73(0.44-1.19)	0.205	0.56(0.33-0.97)	0.037	0.52(0.30-0.91)	0.021	0.57(0.33-1.00)	0.048
	VIM of PP									
	low	35/210	reference	-	reference	-	reference	-	reference	-
	middle	86/441	1.21(0.79-1.87)	0.385	1.10(0.69-1.76)	0.675	1.14(0.71-1.83)	0.583	1.16(0.72-1.88)	0.541
	high	51/212	1.58(0.98-2.56)	0.061	1.24(0.74-2.09)	0.419	1.13(0.66-1.93)	0.662	1.19(0.69-2.05)	0.535
	VIM of SBP									
	low	111/230	reference	-	reference	-	reference	-	reference	-
	middle	218/425	1.13(0.82-1.56)	0.459	1.17(0.82-1.68)	0.384	1.12(0.77-1.62)	0.549	1.17(0.80-1.71)	0.424

high	124/208	1.58(1.08-2.31)	0.018	1.66(1.08-2.55)	0.021	1.49(0.96-2.33)	0.077	1.64(1.04-2.58)	0.034
VIM of DBP									
low	117/241	reference	-	reference	-	reference	-	reference	-
middle	232/436	1.21(0.88-1.65)	0.245	1.15(0.81-1.63)	0.443	1.12(0.78-1.60)	0.552	1.14(0.79-1.66)	0.474
high	104/186	1.34(0.92-1.97)	0.131	1.15(0.74-1.78)	0.543	1.18(0.75-1.85)	0.475	1.34(0.84-2.13)	0.222
VIM of PP									
low	94/210	reference	-	reference	-	reference	-	reference	-
middle	231/441	1.36(0.98-1.89)	0.07	1.27(0.88-1.83)	0.206	1.29(0.88-1.87)	0.19	1.30(0.89-1.89)	0.178
high	128/212	1.88(1.28-2.77)	0.001	1.63(1.05-2.53)	0.031	1.57(0.99-2.47)	0.053	1.64(1.04-2.59)	0.034

Note:

multi adjusted OR₁: was adjusted age, gender, education level, drinking status, smoking status, physical activity level, baseline BMI, diabets, TG, HDL, and L DL level;

multi adjusted OR₂: based on the adjusted OR₁, and further adjusted mean value of SBP, DBP, or PP when the exposure was the corresponding variability of BP indicator;

BP variability was categorized into three groups (< p25 as low, p25-p75 as middle, or ≥ p75 as high).

Abbreviations:VIM: variability independent of the mean; LA: lacunes; CMBs: cerebral microbleeds; PVS: enlarged perivascular spaces; WMH: white matter hyperintensities; SBP: Systolic blood pressure; DBP: diastolic blood pressure; PP: pulse pressure; cSVD: cerebral small vessel disease; non-cSVD: if the total burden is zero; mild cSVD:if the total burden is one; moderate cSVD: if the total burden is 2; and severe cSVD: if the total burden is 3 or 4.

**A total of 1508 participants completed brain MR imaging
between December 2020 and March 2022**

224 participants were excluded

- **Less than 3 visits of BP measure during the past examinations between June 2006 and March 2022 (N=174)**
- **Had stroke at present examination(N=3)**
- **Had cancer at present examination(N=1)**
- **More than half of the covariate information is missing (N=46)**

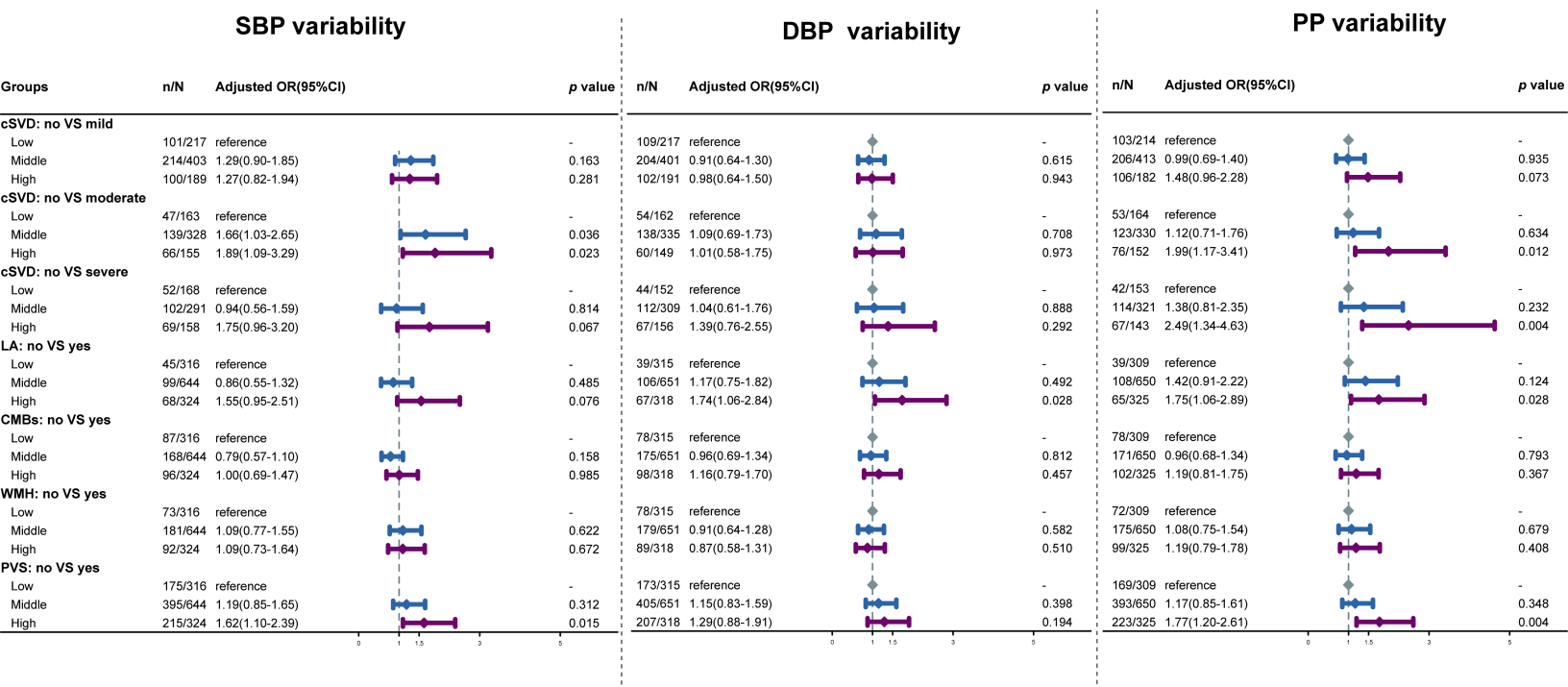
1284 participants were included in the analyses

**no cSVD
(N=394)**

**cSVD
(N= 890)**

According to the presence of CMBs, LA, WMH, or PVS

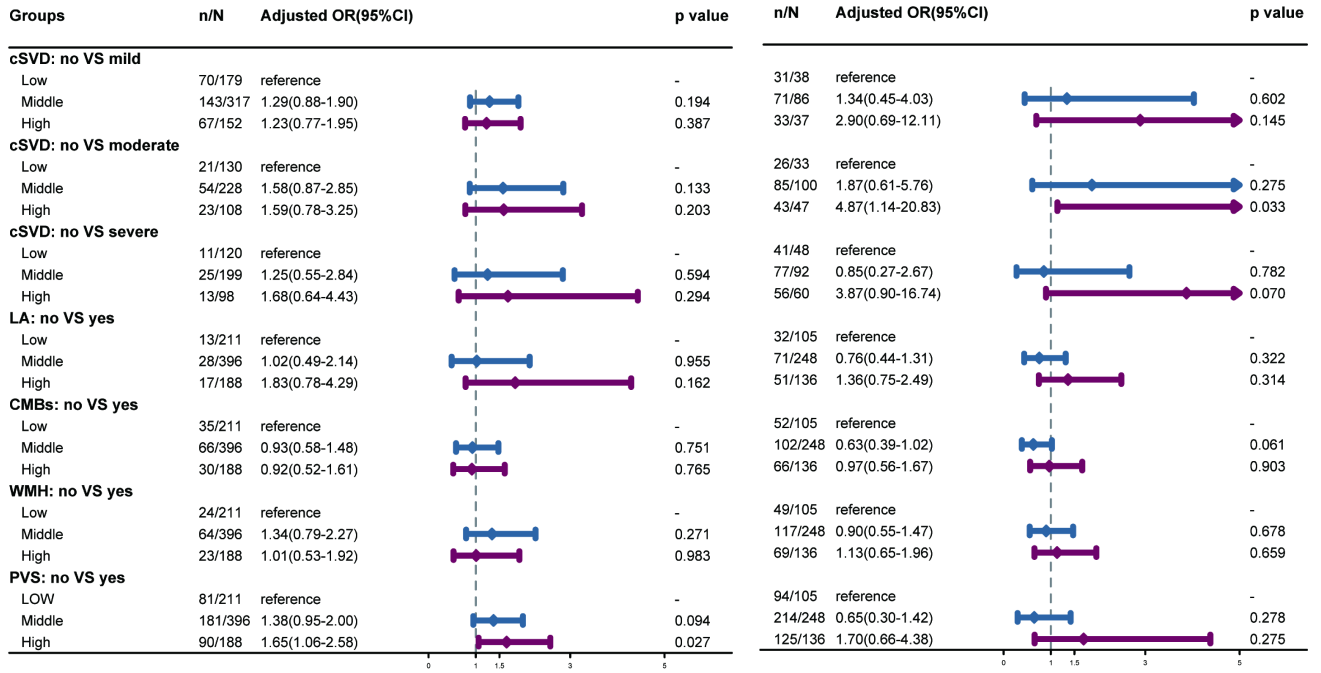
- **Mild cSVD defined as if number of factor is one (N=415)**
- **Moderate cSVD defined as if number of factor are two (N=252)**
- **Severe cSVD defined as if number of factor are three or four (N=223)**



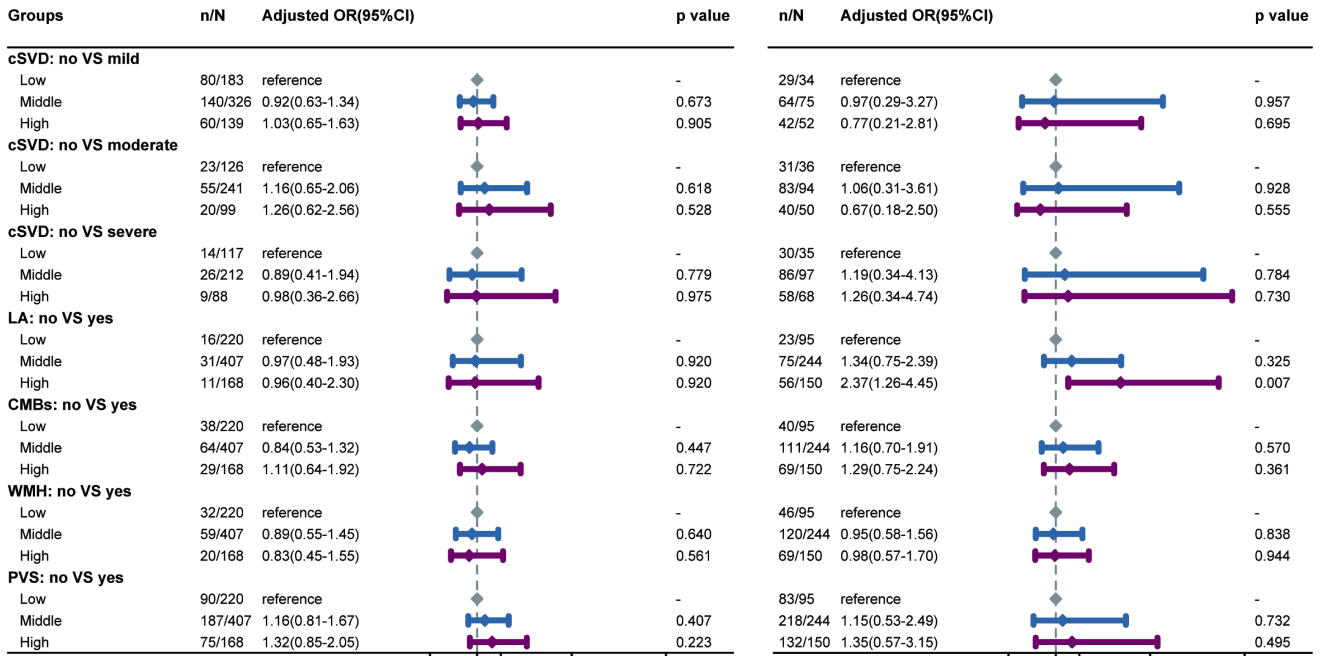
Age < 60 years old

Age ≥ 60 years old

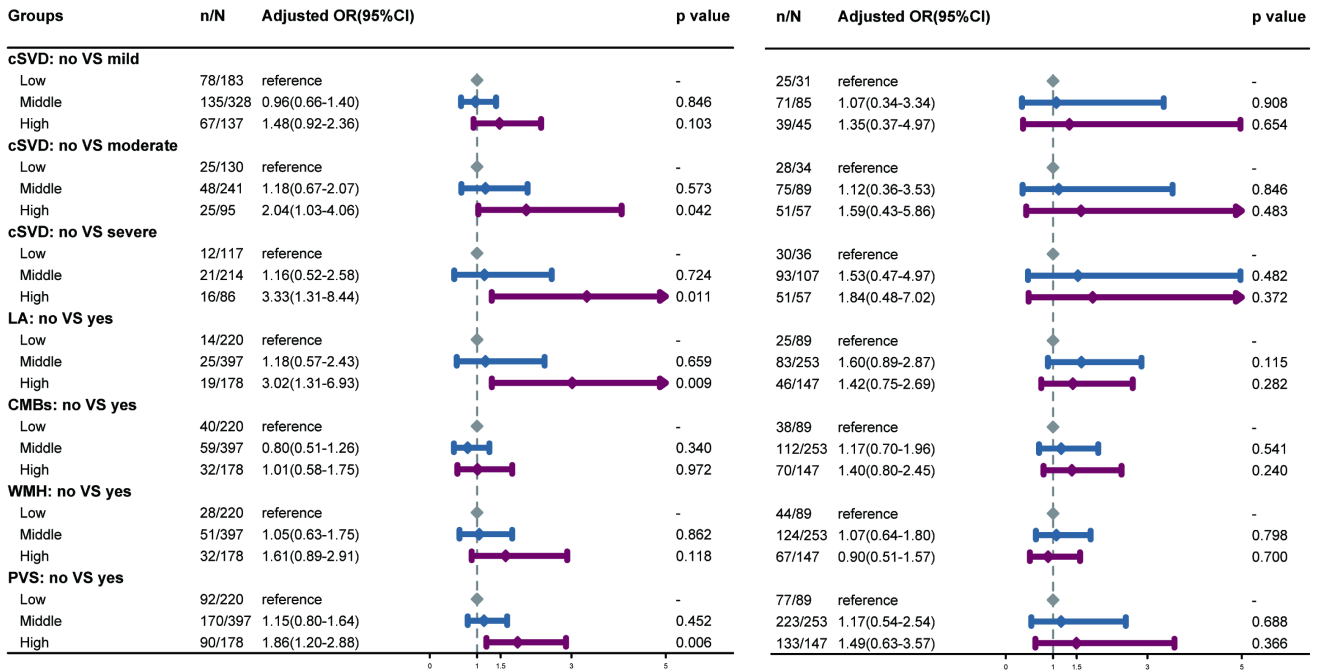
SBP variability



DBP variability



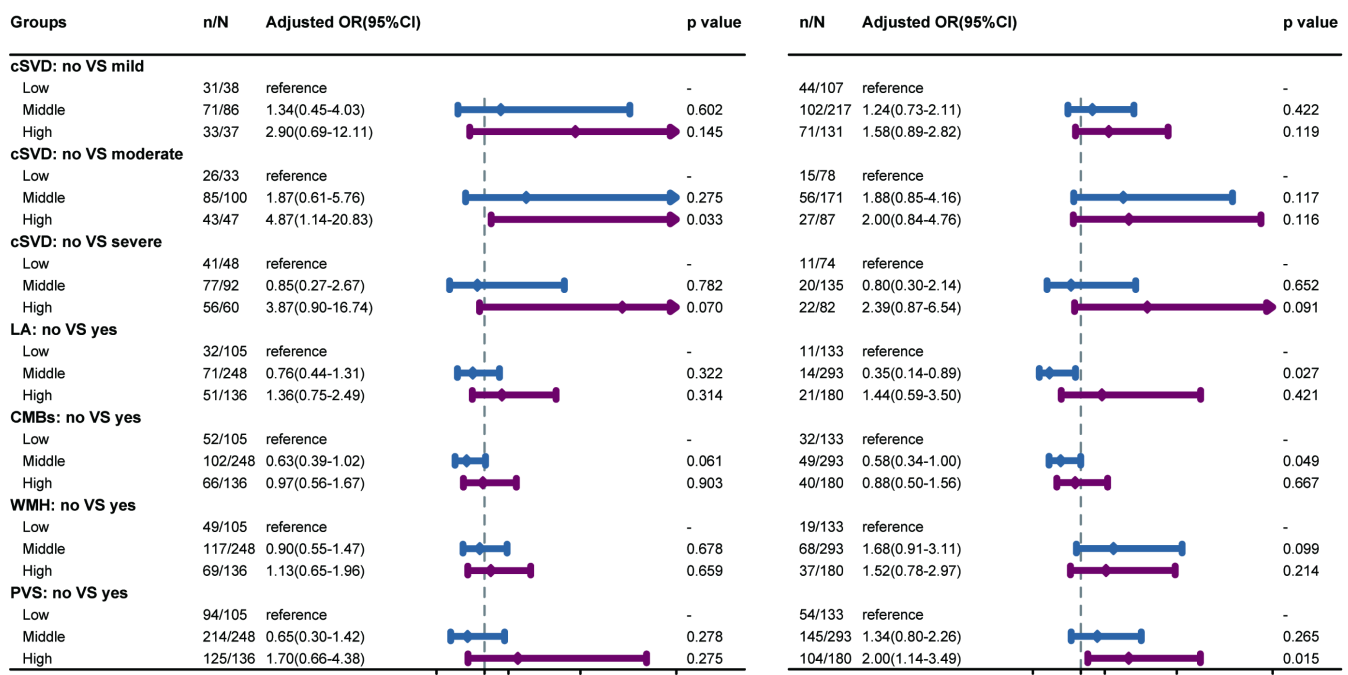
PP variability



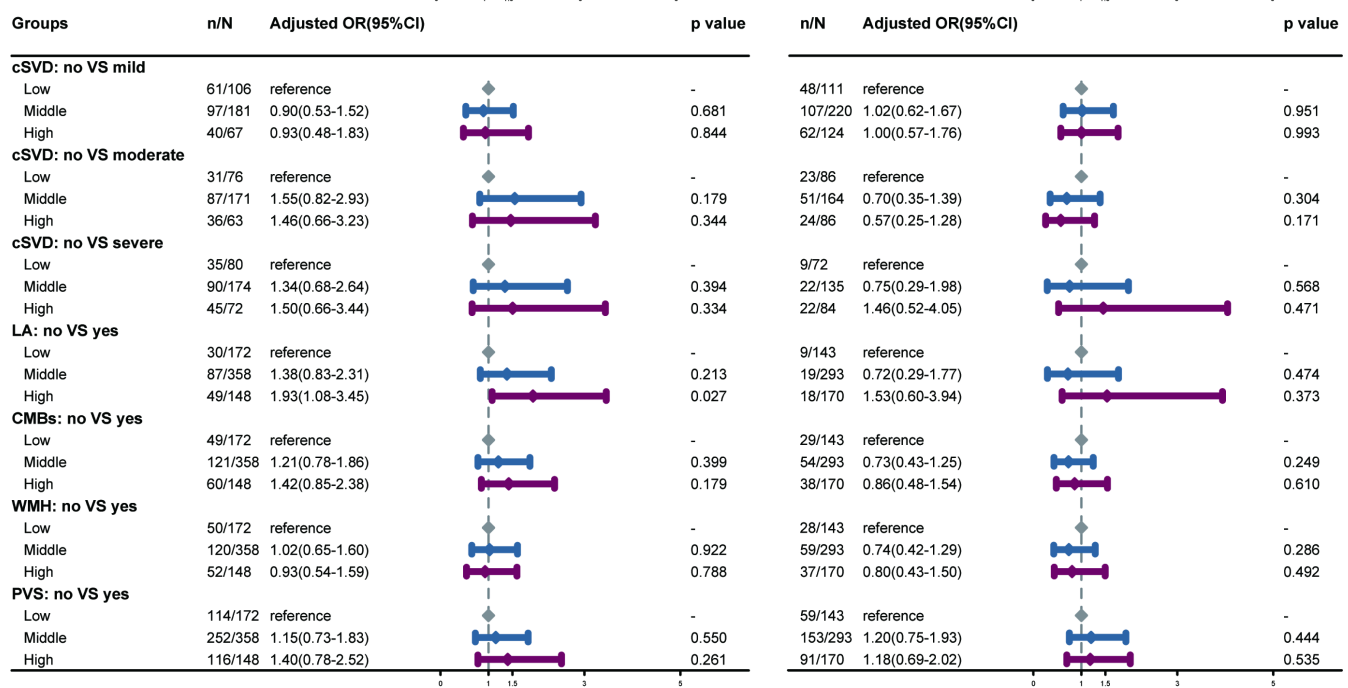
Male

Female

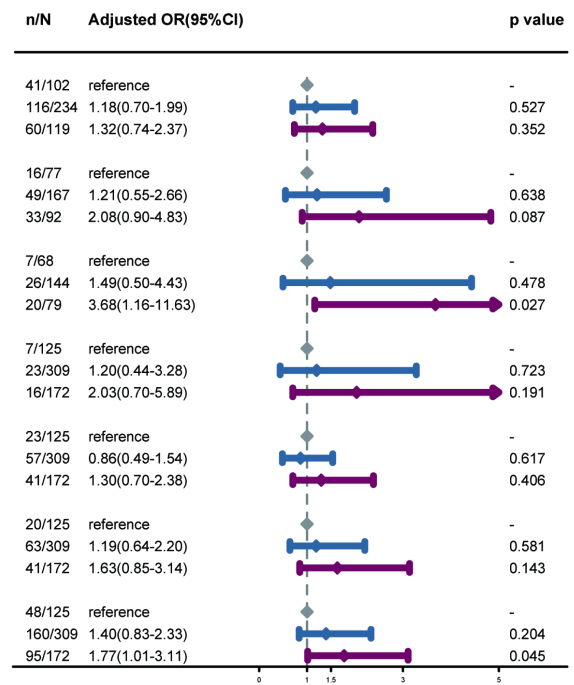
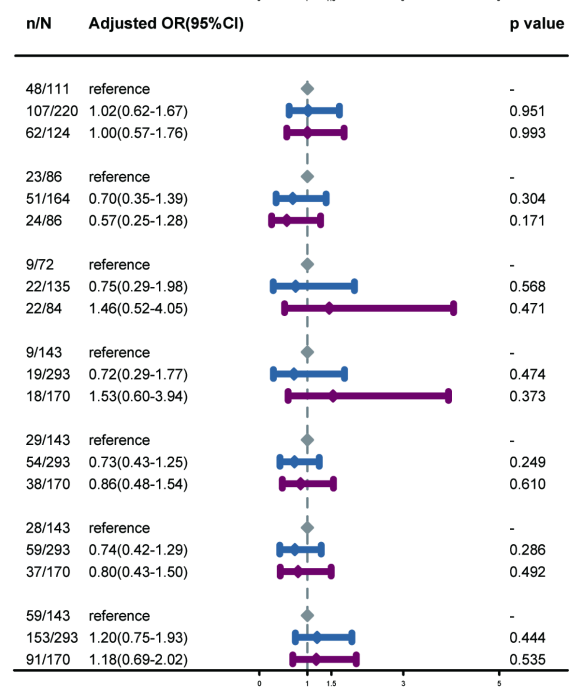
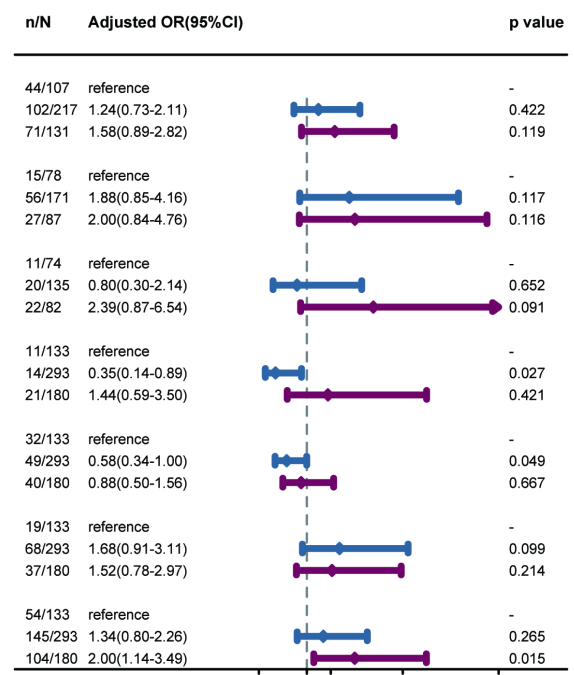
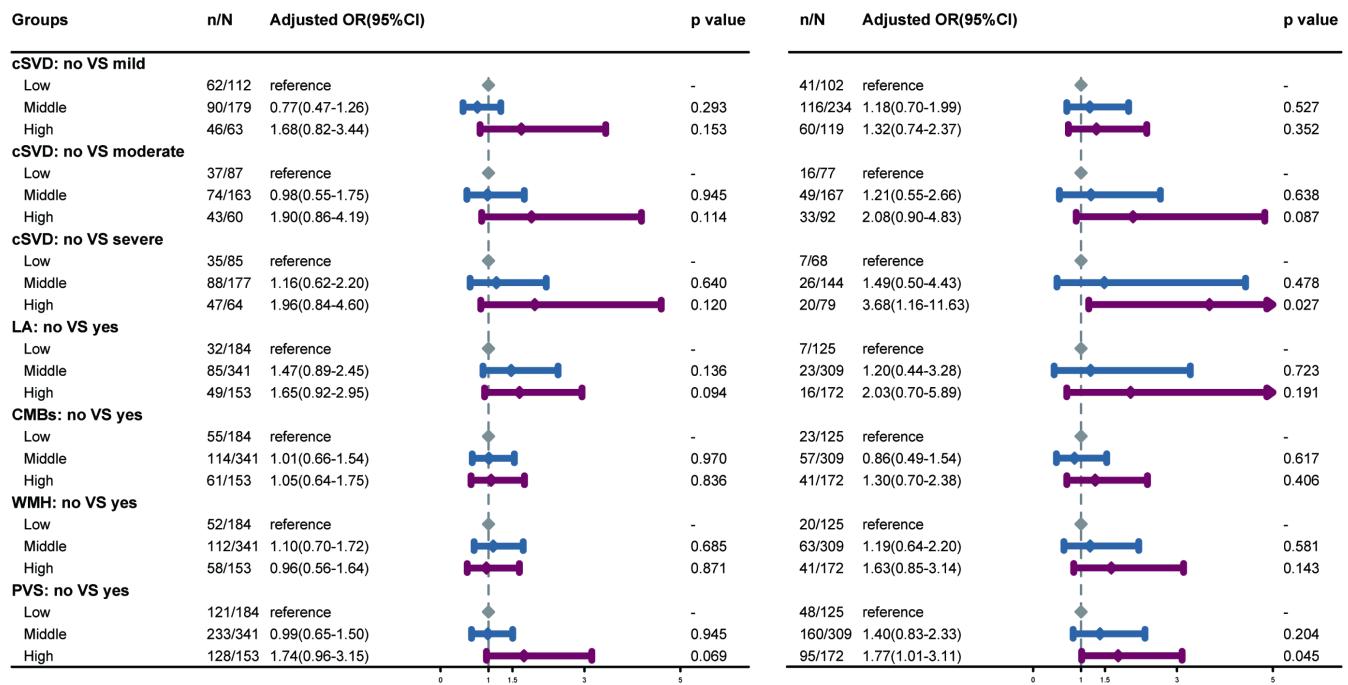
SBP variability

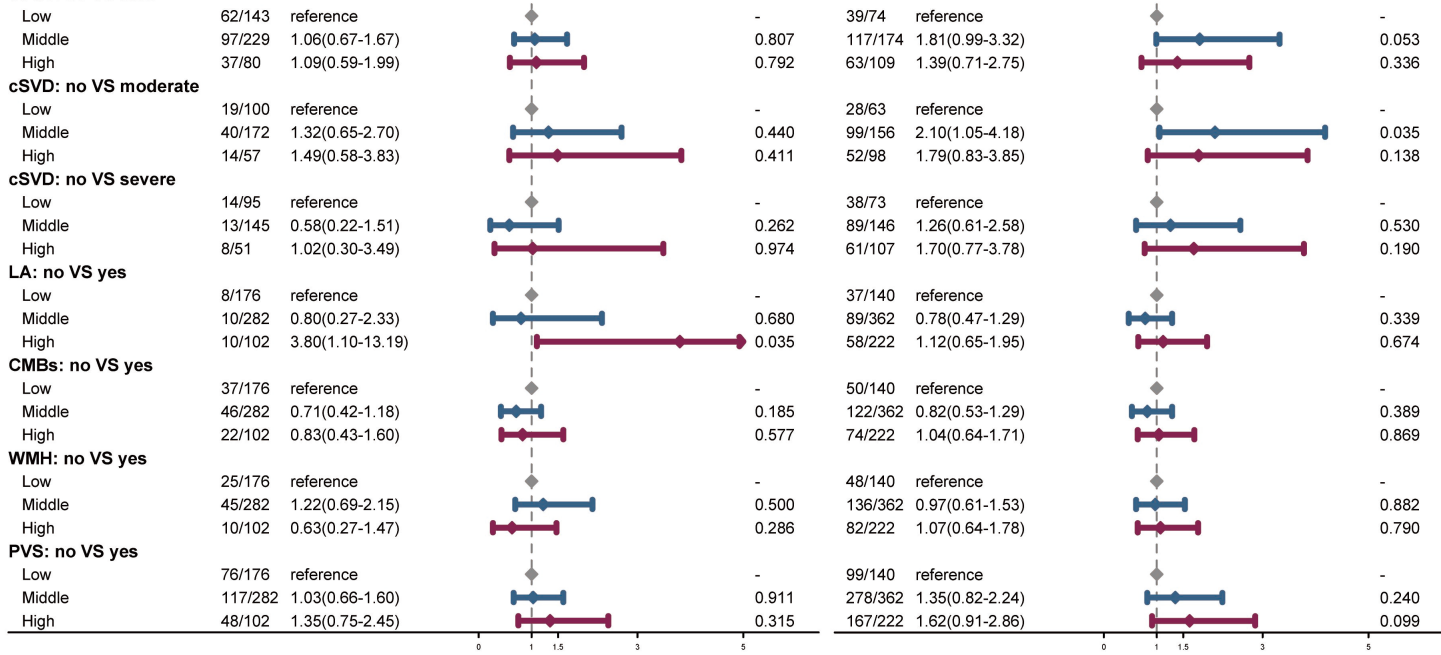


DBP variability



PP variability





DBP variability

Groups	n/N	Adjusted OR(95%CI)	p value	n/N	Adjusted OR(95%CI)	p value
cSVD: no VS mild						
Low	55/135	reference	-	54/82	reference	-
Middle	94/221	1.00(0.63-1.59)	0.993	110/180	0.75(0.42-1.34)	0.330
High	47/96	1.24(0.70-2.23)	0.461	55/95	0.63(0.32-1.22)	0.171
cSVD: no VS moderate						
Low	18/98	reference	-	36/64	reference	-
Middle	40/167	1.02(0.49-2.11)	0.962	98/168	0.98(0.51-1.89)	0.949
High	15/64	0.98(0.39-2.47)	0.964	45/85	0.71(0.33-1.52)	0.381
cSVD: no VS severe						
Low	9/89	reference	-	35/63	reference	-
Middle	17/144	0.97(0.35-2.73)	0.961	95/165	0.96(0.47-1.95)	0.910
High	9/58	1.03(0.30-3.48)	0.962	58/98	0.99(0.45-2.20)	0.985
LA: no VS yes						
Low	6/162	reference	-	33/153	reference	-
Middle	15/278	1.37(0.45-4.13)	0.577	91/373	1.14(0.69-1.88)	0.602
High	7/120	1.68(0.47-6.04)	0.429	60/198	1.61(0.93-2.79)	0.087
CMBs: no VS yes						
Low	30/162	reference	-	48/153	reference	-
Middle	50/278	0.82(0.48-1.40)	0.464	125/373	1.09(0.70-1.69)	0.700
High	25/120	0.80(0.42-1.53)	0.502	73/198	1.32(0.81-2.16)	0.272
WMH: no VS yes						
Low	25/162	reference	-	53/153	reference	-
Middle	41/278	0.78(0.44-1.40)	0.412	138/373	0.95(0.61-1.49)	0.835
High	14/120	0.52(0.24-1.12)	0.095	75/198	0.95(0.58-1.57)	0.849
PVS: no VS yes						
Low	60/162	reference	-	113/153	reference	-
Middle	122/278	1.18(0.74-1.87)	0.492	283/373	1.04(0.64-1.68)	0.886
High	59/120	1.56(0.87-2.78)	0.134	148/198	0.90(0.52-1.57)	0.716

PP variability

Groups	n/N	Adjusted OR(95%CI)	p value	n/N	Adjusted OR(95%CI)	p value
cSVD: no VS mild						
Low	50/122	reference	-	53/92	reference	-
Middle	98/234	0.99(0.62-1.59)	0.977	108/179	0.96(0.55-1.67)	0.887
High	48/96	1.31(0.73-2.34)	0.367	58/86	1.41(0.72-2.77)	0.321
cSVD: no VS moderate						
Low	14/86	reference	-	39/78	reference	-
Middle	40/176	1.39(0.64-2.99)	0.402	83/154	0.90(0.48-1.69)	0.745
High	19/67	1.68(0.68-4.20)	0.264	57/85	1.69(0.80-3.54)	0.168
cSVD: no VS severe						
Low	9/81	reference	-	33/72	reference	-
Middle	17/153	1.12(0.39-3.20)	0.836	97/168	1.31(0.66-2.61)	0.443
High	9/57	1.60(0.47-5.47)	0.451	58/86	2.32(1.03-5.22)	0.042
LA: no VS yes						
Low	6/145	reference	-	33/164	reference	-
Middle	15/291	1.60(0.52-4.96)	0.414	93/359	1.35(0.82-2.24)	0.242
High	7/124	1.57(0.43-5.76)	0.499	58/201	1.64(0.94-2.85)	0.083
CMBs: no VS yes						
Low	29/145	reference	-	49/164	reference	-
Middle	51/291	0.77(0.45-1.33)	0.356	120/359	1.09(0.70-1.70)	0.691
High	25/124	0.78(0.41-1.48)	0.442	77/201	1.44(0.88-2.34)	0.145
WMH: no VS yes						
Low	18/145	reference	-	54/164	reference	-
Middle	42/291	1.17(0.62-2.20)	0.632	133/359	0.95(0.61-1.48)	0.812
High	20/124	1.32(0.62-2.77)	0.471	79/201	0.99(0.60-1.63)	0.970
PVS: no VS yes						
Low	55/145	reference	-	114/164	reference	-
Middle	126/291	1.19(0.75-1.89)	0.465	267/359	1.09(0.68-1.75)	0.709
High	60/124	1.41(0.80-2.50)	0.239	163/201	1.73(0.99-3.04)	0.056