

1 **Impact of changes in Achilles tendon thickening on cardiovascular events in patients**  
2 **with familial hypercholesterolemia**

3

4 **Short title:** Regression of Achilles tendon thickness among FH

5

6 Hayato Tada MD<sup>a\*</sup>, Nobuko Kojima MD<sup>a</sup>, Yasuaki Takeji MD<sup>a</sup>, Atsushi Nohara MD<sup>b</sup>,  
7 Masa-aki Kawashiri MD<sup>c</sup>, Masayuki Takamura MD<sup>a</sup>

8

9 <sup>a</sup>Department of Cardiovascular Medicine, Kanazawa University Graduate School of  
10 Medical Sciences, Kanazawa, Japan

11 <sup>b</sup>Department of Genetics, Ishikawa Prefectural Central Hospital, Kanazawa, Japan

12 <sup>c</sup>Department of Internal Medicine, Kaga Medical Center,

13

14 **\*Corresponding author:**

15 Hayato Tada, MD

16 Department of Cardiovascular Medicine, Kanazawa University Graduate School of Medical

17 Sciences, 13-1 Takara-machi, Kanazawa 920-8641, Japan

18 Phone: +81-76-265-2000 (2251), Fax: +81-76-234-4251

19 Email: [ht240z@sa3.so-net.ne.jp](mailto:ht240z@sa3.so-net.ne.jp)

20

21

22

23

24

1 **Abstract**

2 **Background:** Achilles tendon thickening (ATT) can be ameliorated by lowering  
3 low-density lipoprotein (LDL) levels in patients with familial hypercholesterolemia (FH).  
4 The Japan Atherosclerosis Society (JAS) defines ATT as  $\geq 8.0$  mm in males and  $\geq 7.5$  mm in  
5 females. We aimed to determine the clinical impact of changes in ATT on the development  
6 of major adverse cardiovascular events (MACE).

7 **Methods:** Patients with clinically diagnosed heterozygous FH (HeFH) (N = 1273; 614  
8 males, 659 females) with ATT data from X-ray were assessed. Patients were divided into  
9 four groups: patients without ATT from baseline until follow-up (group 1), patients without  
10 ATT at baseline but developed ATT at follow-up (group 2), patients with ATT at baseline  
11 but regressed at follow-up (group 3), and patients with ATT from baseline until follow-up  
12 (group 4). Cox proportional hazard models were used to assess the factors associated with  
13 MACE, including cardiovascular death and any coronary events.

14 **Results:** On follow-up (median: 10.9 years), 142 MACEs were observed, and the median  
15 ATT regressed from 7.8 to 7.6 mm. Changes in ATT were significantly associated with the  
16 occurrence of MACE in all groups, when compared to group 1 (hazard ratio [HR]: 2.73;  
17 95% confidence interval [CI]: 1.33–4.13 [ $p < 0.001$ ], HR: 2.18, 95% CI: 1.08–3.28, [ $p <$   
18 0.001], HR: 6.34, 95% CI: 3.10–9.58, [ $p < 0.001$ ], in groups 2, 3, and 4, respectively).

19 **Conclusions:** Assessing ATT has diagnostic value and allows for risk stratification among  
20 patients with HeFH.

21

22 **Key words:** familial hypercholesterolemia; Achilles tendon thickness; LDL cholesterol;

1 LDL receptor;

2

## 1 **1. Introduction**

2 Familial hypercholesterolemia (FH) is one of the most common Mendelian disorders, with  
3 an estimated prevalence of 1 in 300 among the general population [1-4]. This disorder has  
4 three major clinical manifestations, including high low-density lipoprotein (LDL)  
5 cholesterolemia, premature coronary artery disease (CAD), and tendon xanthomas [5],  
6 which are used as diagnostic criteria of FH worldwide [6-10]. In particular, tendon  
7 xanthomas, especially Achilles tendon thickening (ATT), are an important objective  
8 diagnostic criterion used by the Japan Atherosclerosis Society (JAS) because it can be  
9 assessed as a numerical value. In 2022, the JAS FH clinical criteria were revised; the  
10 thresholds of ATT on X-ray were changed from  $\geq 9.0$  mm in both sexes to  $\geq 8.0$  mm in males  
11 and  $\geq 7.5$  mm in females [9]. ATT can be ameliorated with LDL-lowering therapies,  
12 especially in younger patients [11], with some reaching normal levels but others that  
13 remained unchanged. In this study, we determined the clinical impact of changes in ATT on  
14 the development of major adverse cardiovascular events (MACE) among patients with  
15 heterozygous FH (HeFH).

16

## 17 **2. Materials and Methods**

### 18 ***2.1. Study population***

19 Patients at Kanazawa University Hospital diagnosed with HeFH from 1990 to 2022 were  
20 retrospectively assessed. We used the most recent Japanese clinical criteria for FH (JAS FH  
21 criteria 2022). Out of 2213 HeFH patients, 1273 were included in the analysis, after  
22 excluding those with a lack of baseline clinical data (e.g., ATT, presence of CAD) and lost

1 to follow-up.

## 2 **2.2.Clinical data**

3 We assessed baseline clinical variables, including age, sex, hypertension (systolic blood  
4 pressure  $\geq 140$  mmHg and/or diastolic blood pressure  $\geq 90$  mmHg, or receiving  
5 antihypertensive treatment), diabetes (according to the Japanese clinical diagnostic criteria  
6 of diabetes), smoking (defined as current smoking habit), total cholesterol, triglycerides,  
7 HDL cholesterol, LDL cholesterol (using the Friedewald formula if serum triglyceride  
8 levels were  $<400$  mg/dL; otherwise, determined enzymatically), and the presence of CAD  
9 (severe stenosis  $\geq 75\%$  of any coronary artery). ATTs were assessed by X-ray using the  
10 standard procedure at baseline and at follow-up [12]. Cholesterol-year scores were assessed  
11 as previously described [13]. We also assessed the occurrence of major adverse cardiac  
12 events (MACEs) during follow-up, defined as cardiovascular death or any coronary event,  
13 including coronary revascularization.

## 14 **2.3.Changes in ATT status**

15 Patients were divided into four groups based on changes in ATT status, defined as  $\geq 8.0$  mm  
16 in males and  $\geq 7.5$  mm in females. Group 1 included patients without ATT from baseline  
17 until follow-up. Group 2 included patients without ATT at baseline but developed ATT at  
18 follow-up. Group 3 included patients with ATT at baseline but regressed at follow-up.  
19 Group 4 included patients with ATT from baseline until follow-up.

## 20 **2.4.Genetic analysis**

21 The coding regions of FH genes, including LDL receptor, proprotein convertase  
22 subtilisin/kexin type 9 (*PCSK9*), apolipoprotein B (*APOB*), and LDL receptor adaptor

1 protein 1 (*LDLRAP1*), were sequenced using iSeq 100 (San Diego, USA) as previously  
2 described [14]. The pathogenicity of the variants was determined using allele frequency  
3 information obtained from the ExAC Asian population data, *in silico* annotation tools, and  
4 the ClinVar database. Rare mutations in the Asian population were defined as those with an  
5 allele frequency <5% . Finally, the pathogenicity of the variants was classified according to  
6 the standard American College of Medical Genetics and Genomics criteria, as previously  
7 described [15].

### 8 ***2.5.Ethical considerations***

9 This study was conducted in compliance with the Declaration of Helsinki, the Ethical  
10 Guidelines for Medical and Health Research Involving Human Subjects, and all other  
11 applicable laws and guidelines in Japan. The study protocol was approved by the  
12 Institutional Review Board of Kanazawa University Hospital (Kanazawa, Japan). Informed  
13 consent for genetic analyses was obtained from all patients.

### 14 ***2.6.Statistical analysis***

15 Categorical variables were reported as percentages and compared using Fisher’s exact test  
16 or the chi-square test, as appropriate. Continuous variables with normal and nonnormal  
17 distributions, respectively, were reported as means  $\pm$  SD and medians with interquartile  
18 ranges (IQRs). The mean values of continuous variables were compared using Student’s  
19 t-test for independent data variables, whereas median values were compared using the  
20 nonparametric Wilcoxon Mann–Whitney rank sum test. Chi-square or Fisher’s post hoc  
21 tests were used for categorical variables as indicated. Spearman’s correlation coefficients  
22 were calculated between age and Achilles tendon thickness and between cholesterol-year

1 score and Achilles tendon thickness. Cox proportional hazards model was used to assess  
2 relationships among all variables, including age, sex, hypertension, diabetes, smoking  
3 status, baseline LDL cholesterol, prior CVD, FH mutations, and ATT. Cumulative Kaplan–  
4 Meier survival curves starting at baseline were constructed to compare the time to the first  
5 MACE incident. Statistical analysis was conducted using R statistics  
6 (<https://www.r-project.org>), with  $p < 0.05$  considered statistically significant.

7

### 8 **3. Results**

#### 9 ***3.1. Clinical characteristics at baseline based on the occurrence of MACE***

10 Baseline clinical characteristics are presented in Table 1. The mean age was 50 years, with  
11 614 (48.2%) males. The median LDL cholesterol at baseline was 241 mg/dL, which was  
12 reduced to 113 mg/dL at follow-up under the lipid-lowering therapies (**Supplemental**  
13 **Table 1**). The median Achilles tendon thickness at baseline was 7.8 mm, which was  
14 reduced to 7.6 mm at follow-up. There were significant differences in most variables,  
15 except for the prevalence of FH mutation, when patients were grouped according to the  
16 occurrence of MACE (Table 1). The cholesterol-year score was significantly associated  
17 with age (**Supplemental Figure 1**).

#### 18 ***3.2. Associations between ATT and clinical variables***

19 Achilles tendon thickness was significantly larger in patients with MACE versus those  
20 without (median: 9.0 vs. 7.6 mm, **Figure 1A, Supplemental Figure 2**), as well as in  
21 patients with FH mutation versus those without (8.0 vs. 6.6 mm, **Supplemental Figure 3**).  
22 In addition, Achilles tendon thickness increased with aging among patients with HeFH in

1 both males ( $p < 0.001$ , Spearman's  $r = 0.22$ ) and females ( $p < 0.001$ , Spearman's  $r = 0.31$ ).  
2 Similarly, Achilles tendon thickness among patients with HeFH was correlated with  
3 cholesterol-year score regardless of the occurrence of MACE ( $p < 0.001$ ; Spearman's  $r =$   
4  $0.33$  in patients with MACE, and  $p < 0.001$ ; Spearman's  $r = 0.35$  in patients without MACE,  
5 **Figure 2**)

### 6 ***3.3. Baseline and changes in Achilles tendon thickness according to age***

7 There was a significant trend between age and Achilles tendon thickness (**Figure 3A**). The  
8 median (IQR) Achilles tendon thickness of each age group was 4.0 mm (3.4–4.3) in 0–9  
9 years, 6.6 mm (5.5–7.4) in 10–19 years, 7.4 mm (6.0–8.2) in 20–29 years, 8.0 mm (6.8–9.0)  
10 in 30–39 years, 7.8 mm (6.6–9.0) in 40–49 years, 7.7 mm (6.6–9.5) in 50–59 years, 8.0 mm  
11 (6.8–11.0) in 60–69 years, 8.4 mm (7.0–11.0) in 70–79 years, and 8.5 mm (range, 7.6–11.0)  
12 in 80–89 years. Larger regressions in Achilles tendon thickness were observed in younger  
13 generations (**Figure 3B**). The median (IQR) changes in Achilles tendon thickness of each  
14 age group were +0.5 mm (+0.2–+1.0) in 0–9 years, –0.2 mm (–0.6–+0.1) in 10–19 years,  
15 –0.2 mm (–1.0–+0.1) in 20–29 years, –0.2 mm (–1.0–0.0) in 30–39 years, –0.1 mm (–0.8–  
16 +0.1) in 40–49 years, 0.0 mm (–0.5–+0.2) in 50–59 years, 0.0 mm (0.0–+0.4) in 60–69  
17 years, 0.0 mm (0.0–+0.4) in 70–79 years, 0.0 mm (0.0–+0.3) in 80–89 years.

### 18 ***3.4. Clinical characteristics at baseline according to changes in ATT***

19 Some patients without ATT at baseline remained without ATT (group 1,  $N = 158$ ), while  
20 others developed ATT during follow-up (group 2,  $N = 91$ ). Moreover, there were also some  
21 patients with ATT at baseline whose ATT regressed at follow-up (group 3,  $N = 111$ ) and  
22 others whose ATT remained unchanged during follow-up (group 4,  $N = 913$ ). Detailed



1 clinical characteristics according to this classification are described in **Table 2**.

### 2 ***3.5.Factors associated with MACE***

3 In total, 142 MACEs were observed during the median follow-up period of 10.9 years (IQR,  
4 7.8–15.4 years). The details of MACEs are described in **Supplemental Table 2**. The Cox  
5 proportional hazards model revealed that the following factors were significantly associated  
6 with MACEs: age (hazard ratio [HR] = 1.07; 95% confidence interval [CI] = 1.05–1.10;  $p <$   
7 0.001), male sex (HR = 1.55; 95% CI = 1.08–2.10;  $p <$  0.001), hypertension (HR = 3.14;  
8 95% CI = 2.00–4.28;  $p <$  0.001), diabetes (HR = 2.54; 95% CI = 1.50–3.58;  $p <$  0.001),  
9 smoking (HR = 2.22; 95% CI = 1.50–2.94;  $p <$  0.001), LDL cholesterol (HR = 1.01; 95%  
10 CI = 1.00–1.02;  $p <$  0.001, per 10 mg/dL), prior CVD (HR = 3.11; 95% CI = 1.88–4.54;  $p <$   
11 0.001), and the presence of pathogenic variants (HR = 1.66; 95% CI = 1.11–2.21;  $p <$   
12 0.001) (**Table 3**). Under these circumstances, changes in ATT were significantly associated  
13 with the occurrence of MACE, in group 2 (HR: 2.73; 95% CI: 1.33–4.13;  $p <$  0.001), group  
14 3 (HR: 2.18; 95% CI: 1.08–3.28;  $p <$  0.001), and group 4 (HR: 6.34; 95% CI: 3.10–9.58;  $p$   
15  $<$  0.001), when group 1 was considered as reference.

### 16 ***3.6.The occurrence of MACE according to changes in ATT status***

17 Group 4 had the worst prognosis, followed by groups 2 and 3. The prognosis of group 1  
18 was quite good (**Figure 4**).

19

## 20 **4. Discussion**

21 In this study, we determined the clinical impact of changes in ATT on the development of  
22 MACE. Our key findings were as follows: 1) Achilles tendon thickness in HeFH is

1 associated with aging and cholesterol-year score, 2) ATT can regress in some patients,  
2 associated with LDL-lowering therapy, and 3) changes in ATT status can be used as a risk  
3 marker for cardiovascular events among patients with HeFH.

4 Tendon xanthomas, including ATT, is a specific finding of FH, and thus, it has  
5 been used as an important clinical diagnostic criteria of FH worldwide [6-10]. In fact, ATT  
6 can be objectively assessed via X-ray or ultrasound. Therefore, it is important to determine  
7 the threshold of ATT. In this study, we have decided to use the thresholds of ATT on X-ray  
8 as  $\geq 8.0$  mm in males and  $\geq 7.5$  mm in females, based on a multicenter study in Japan [12].  
9 Using these cutoffs, patients with HeFH can be diagnosed more accurately with higher  
10 sensitivity [16]. We hope that the objective assessment of ATT will be used as a clinical  
11 diagnostic criteria in other countries. On the other hand, we noticed that ATT can regress in  
12 some patients associated with LDL-lowering therapies, especially younger patients [17].  
13 However, it is unclear whether the assessments of ATT can also be used for risk  
14 stratification for cardiovascular events. In this study, we have clearly demonstrated that  
15 ATT assessments are useful even after follow-up. This is important because ATT can be  
16 assessed noninvasively. Although the mechanisms behind regression of ATT are still  
17 unclear, there are several implications regarding this topic. First, we observed more chances  
18 of ATT regression in younger patients. This is compatible with the notion that younger  
19 plaques with less fibrosis can regress under LDL-lowering therapies [18]. Second, we  
20 observed an association between FH mutation and ATT in this study. Rare genetic variants  
21 (e.g., FH mutations) appear to have a huge impact on the development of ATT.

22 This study has several limitations. First, we used retrospective data from a single

1 center. Thus, the observations from this study may not be applicable to other studies.  
2 Second, functional analyses to validate the pathogenicity of FH mutations were not  
3 conducted. Third, the timing of assessments of ATT, especially at follow-up, was not  
4 systematically determined.

5 In conclusion, assessments of ATT carry diagnostic value and can be used for risk  
6 stratification information among patients with HeFH.

7

1 **Acknowledgements:** We are thankful to Ms. Kazuko Honda and Mr. Sachio Yamamoto  
2 for their outstanding technical assistance.

3 **Sources of funding:** This work was supported by scientific research grants from the  
4 Ministry of Health, Labor and Welfare (MHLW) of Japan (Sciences Research Grant for  
5 Research on Rare and Intractable Diseases) and the Japanese Circulation Society (project  
6 for genome analysis in cardiovascular diseases) to Dr. Hayato Tada.

7 **Conflicts of interest:** The authors have no perceived conflict of interest to declare.

8 **Author contributions:** The authors confirm their contribution to the paper as follows:  
9 Study conception: HT and MK; data collection: HT, NK, YT, AN, MK, and MT. Analysis  
10 and interpretation of results: HT and MK; draft manuscript preparation: HT, NK, YT, AN,  
11 MK, and MT. All authors have reviewed the results and approved the final version of the  
12 manuscript.

13

14

15

16

17

18

19

20

21

22

## 1 **References**

- 2 1. Nohara A, Tada H, Ogura M, Okazaki S, Ono K, Shimano H, Daida H, Dobashi K,  
3 Hayashi T, Hori M, Matsuki K, Minamino T, Yokoyama S, Harada-Shiba M.  
4 Homozygous familial hypercholesterolemia. *J Atheroscler Thromb* 2021 Jul  
5 1;28:665-678. doi: 10.5551/jat.RV17050. Epub 2021 Apr 18. PMID: 33867421;  
6 PMCID: PMC8265428.
- 7 2. Nordestgaard BG, Chapman MJ, Humphries SE, Ginsberg HN, Masana L, Descamps  
8 OS, Wiklund O, Hegele RA, Raal FJ, Defesche JC, Wiegman A, Santos RD, Watts GF,  
9 Parhofer KG, Hovingh GK, Kovanen PT, Boileau C, Averno M, Borén J, Bruckert E,  
10 Catapano AL, Kuivenhoven JA, Pajukanta P, Ray K, Stalenhoef AF, Stroes E, Taskinen  
11 MR, Tybjærg-Hansen A, European Atherosclerosis Society Consensus Panel. Familial  
12 hypercholesterolaemia is underdiagnosed and undertreated in the general population:  
13 guidance for clinicians to prevent coronary heart disease: consensus statement of the  
14 European Atherosclerosis Society. *Eur Heart J* 2013;34:3478-390a.
- 15 3. Beheshti SO, Madsen CM, Varbo A, Nordestgaard BG. Worldwide prevalence of  
16 familial hypercholesterolemia: meta-analyses of 11 million subjects. *J Am Coll Cardiol*  
17 2020;75:2553-2566.
- 18 4. Hu P, Dharmayat KI, Stevens CAT, Sharabiani MTA, Jones RS, Watts GF, Genest J,  
19 Ray KK, Vallejo-Vaz AJ. Prevalence of familial hypercholesterolemia among the  
20 general population and patients with atherosclerotic cardiovascular disease: a  
21 systematic review and meta-analysis. *Circulation* 2020;141:1742-1759.
- 22 5. Mabuchi H. Half a century tales of familial hypercholesterolemia (FH) in Japan. *J*

- 1 Atheroscler Thromb 2017 Mar 1;24:189-207. doi: 10.5551/jat.RV16008. Epub 2017
- 2 Feb 8. PMID: 28179607; PMCID: PMC5383536.
- 3 6. Austin MA, Hutter CM, Zimmern RL, Humphries SE. Genetic causes of monogenic
- 4 heterozygous familial hypercholesterolemia: a HuGE prevalence review. Am J
- 5 Epidemiol 2004;160:407-420.
- 6 7. Scientific Steering Committee on behalf of the Simon Broome Register Group. Risk of
- 7 fatal coronary heart disease in familial hypercholesterolaemia. BMJ 1991;303:893-896.
- 8 8. Williams RR, Hunt SC, Schumacher MC, Hegele RA, Leppert MF, Ludwig EH,
- 9 Hopkins PN. Diagnosing heterozygous familial hypercholesterolemia using new
- 10 practical criteria validated by molecular genetics. Am J Cardiol 1993;72:171-176.
- 11 9. Harada-Shiba M, Arai H, Ohmura H, Okazaki H, Sugiyama D, Tada H, Dobashi K,
- 12 Matsuki K, Minamino T, Yamashita S, Yokote K. Guidelines for the diagnosis and
- 13 treatment of adult familial hypercholesterolemia 2022. J Atheroscler Thromb 2023 May
- 14 1;30:558-586. doi: 10.5551/jat.CR005. Epub 2023 Jan 21. PMID: 36682773; PMCID:
- 15 PMC10164595.
- 16 10. Harada-Shiba M, Ohtake A, Sugiyama D, Tada H, Dobashi K, Matsuki K, Minamino T,
- 17 Yamashita S, Yamamoto Y. Guidelines for the diagnosis and treatment of pediatric
- 18 familial hypercholesterolemia 2022. J Atheroscler Thromb 2023 May 1;30:531-557.
- 19 doi: 10.5551/jat.CR006. Epub 2023 Jan 20. PMID: 36682777; PMCID: PMC10164603.
- 20 11. Tada H, Okada H, Nohara A, Takamura M, Kawashiri MA. Genetic mutations,
- 21 regression of Achilles tendon thickness, and cardiovascular events among patients with
- 22 familial hypercholesterolemia. Atherosclerosis 2022 Jan;340:28-34. doi:

- 1        10.1016/j.atherosclerosis.2021.11.031. Epub 2021 Dec 2. PMID: 34871818.
- 2        12. Tada H, Hori M, Matsuki K, Ogura M, Nohara A, Kawashiri MA, Harada-Shiba M.  
3        Achilles tendon thickness assessed by X-ray predicting a pathogenic mutation in  
4        familial hypercholesterolemia gene. *J Atheroscler Thromb* 2022 Jun 1;29:816-824. doi:  
5        10.5551/jat.62869. Epub 2021 Jul 1. PMID: 34193720; PMCID: PMC9174093.
- 6        13. Tada H, Okada H, Nohara A, Yamagishi M, Takamura M, Kawashiri MA. Effect of  
7        cumulative exposure to low-density lipoprotein-cholesterol on cardiovascular events in  
8        patients with familial hypercholesterolemia. *Circ J* 2021 Oct 25;85:2073-2078. doi:  
9        10.1253/circj.CJ-21-0193. Epub 2021 May 20. PMID: 34011825.
- 10       14. Tada H, Kawashiri MA, Nomura A, Teramoto R, Hosomichi K, Nohara A, Inazu A,  
11       Mabuchi H, Tajima A, Yamagishi M. Oligogenic familial hypercholesterolemia, LDL  
12       cholesterol, and coronary artery disease. *J Clin Lipidol* 2018;12:1436-1444.
- 13       15. Richards S, Aziz N, Bale S, Bick D, Das S, Gastier-Foster J, Grody WW, Hegde M,  
14       Lyon E, Spector E, Voelkerding K, Rehm HL, ACMG Laboratory Quality Assurance  
15       Committee. Standards and guidelines for the interpretation of sequence variants: a joint  
16       consensus recommendation of the American College of Medical Genetics and  
17       Genomics and the Association for Molecular Pathology. *Genet Med* 2015;17:405-424.
- 18       16. Tada H, Nohara A, Usui S, Sakata K, Kawashiri MA, Takamura M. Validation of the  
19       2022 clinical diagnostic criteria of familial hypercholesterolemia in Japan. *J Atheroscler*  
20       *Thromb* 2023 Nov 14. doi: 10.5551/jat.64549. Epub ahead of print. PMID: 37967952.
- 21       17. Biccirè FG, Häner J, Losdat S, Ueki Y, Shibutani H, Otsuka T, Kakizaki R, Hofbauer  
22       TM, van Geuns RJ, Stortecky S, Siontis GCM, Bär S, Lønborg J, Heg D, Kaiser C,

- 1        Spirk D, Daemen J, Iglesias JF, Windecker S, Engstrøm T, Lang I, Koskinas KC, Räber  
2        L. Concomitant coronary atheroma regression and stabilization in response to  
3        lipid-lowering therapy. *J Am Coll Cardiol* 2023 Oct 31;82:1737-1747. doi:  
4        10.1016/j.jacc.2023.08.019. Epub 2023 Aug 26. PMID: 37640248.
- 5    18. Iatan I, Guan M, Humphries KH, Yeoh E, Mancini GBJ. Atherosclerotic coronary  
6        plaque regression and risk of adverse cardiovascular events: A systematic review and  
7        updated meta-regression analysis. *JAMA Cardiol* 2023 Oct 1;8:937-945. doi:  
8        10.1001/jamacardio.2023.2731; PMID: 37647074; PMCID: PMC10469293.  
9



1 **Tables**

2 **Table 1. Baseline characteristics according to the occurrence of major adverse cardiovascular events**

	All (N = 1,273)	MACE (N = 142)	NO-MACE (N = 1,131)	P-value
Age (years)	50 ± 16	61 ± 16	47 ± 16	<0.001
Male (%)	614 (48.2%)	80 (56.3%)	534 (47.2%)	0.0498
Hypertension (%)	368 (28.9%)	102 (71.8%)	266 (13.5%)	<0.001
Diabetes (%)	114 (9.0%)	43 (30.3%)	71 (6.3%)	<0.001
Smoking (%)	228 (17.9%)	85 (59.9%)	303 (26.8%)	<0.001
Total cholesterol (mg/dL)	317 [288–359]	321 [289–377]	317 [287–355]	<0.001
Triglyceride (mg/dL)	125 [83–173]	136 [94–178]	124 [82–170]	<0.001
HDL cholesterol (mg/dL)	47 [40–57]	44 [35–52]	48 [40–57]	< 0.001
LDL cholesterol (at baseline, mg/dL)	241 [208–286]	253 [213–309]	240 [207–283]	<0.001
LDL cholesterol (at follow-up mg/dL)	113 [94–135]	110 [88–126]	113 [95–135]	<0.001
Family history of FH and/or premature CVD (%)	920 (72.3%)	124 (87.3%)	896 (79.2%)	0.03
Achilles tendon thickness (at baseline, mm)	7.8 [6.6–9.0]	9.0 [8.0–13.3]	7.6 [6.6–9.0]	<0.001
Achilles tendon thickness (at follow-up, mm)	7.6 [6.4–8.9]	9.0 [8.0–13.0]	7.5 [6.4–8.9]	<0.001
FH mutation (%)	966 (75.9%)	112 (78.9%)	854 (75.5%)	0.44
History of prior CVD (%)	393 (30.9%)	115 (81.0%)	278 (24.6%)	<0.001

3 HDL, high-density lipoprotein; LDL, low-density lipoprotein; CVD, cardiovascular disease

4

5

6

1 **Table 2. Baseline characteristics according to changes in Achilles tendon thickening status**

	All (N = 1,273)	group 1 (N = 158)	group 2 (N = 91)	group 3 (N = 111)	group 4 (N = 913)
Age (years)	50 ± 16	46 ± 18	53 ± 16	42 ± 18	50 ± 16
Male (%)	614 (48.2%)	66 (41.8%)	54 (59.3%)	54 (48.6%)	440 (48.2%)
Hypertension (%)	368 (28.9%)	31 (19.6%)	37 (40.6%)	34 (30.6%)	266 (29.1%)
Diabetes (%)	114 (9.0%)	10 (6.3%)	12 (13.2%)	6 (5.4%)	86 (9.4%)
Smoking (%)	228 (17.9%)	15 (9.5%)	31 (34.1%)	11 (10.0%)	171 (18.7%)
Total cholesterol (mg/dL)	317 [288–359]	311 [266–351]	321 [276–363]	325 [291–391]	317 [287–358]
Triglyceride (mg/dL)	125 [83–173]	103 [74–156]	134 [91–196]	125 [81–165]	124 [85–174]
HDL cholesterol (mg/dL)	47 [40–57]	50 [43–60]	44 [33–51]	48 [41–58]	47 [40–57]
LDL cholesterol (at baseline, mg/dL)	241 [208–286]	238 [203–282]	244 [213–294]	255 [218–312]	241 [210–286]
LDL cholesterol (at follow-up mg/dL)	113 [94–135]	110 [88–126]	134 [98–152]	104 [72–104]	113 [95–135]
Family history of FH and/or premature CVD (%)	920 (72.3%)	104 (65.8%)	67 (73.6%)	68 (61.3%)	681 (74.6%)
Achilles tendon thickening (at baseline, mm)	7.8 [6.6–9.0]	6.9 [6.2–7.4]	7.1 [6.8–7.5]	8.6 [7.6–10.0]	8.8 [8.1–13.6]
Achilles tendon thickening (at follow-up, mm)	7.6 [6.4–8.9]	6.8 [6.1–7.3]	8.4 [7.9–9.4]	7.2 [7.4–10.0]	8.8 [8.0–13.5]
FH mutation (%)	966 (75.9%)	72 (45.6%)	77 (84.6%)	104 (93.7%)	713 (78.1%)
History of prior CVD (%)	393 (30.9%)	15 (9.5%)	26 (28.6%)	36 (32.4%)	316 (34.6%)

2 HDL, high-density lipoprotein; LDL, low-density lipoprotein; CVD, cardiovascular disease; FH, familial

3 hypercholesterolemia

4

5

6

1 **Table 3. Factors associated with major adverse cardiovascular events**

Variable	HR	95% CI	<i>P</i> -value
Age (per year)	1.07	1.05–1.10	<0.001
Male (yes vs. no)	1.55	1.08–2.10	<0.001
Hypertension (yes vs. no)	3.14	2.00–4.28	<0.001
Diabetes (yes vs. no)	2.54	1.50–3.58	<0.001
Smoking (yes vs. no)	2.22	1.50–2.94	<0.001
LDL cholesterol at baseline (per 10 mg/dl)	1.01	1.00–1.02	<0.001
Prior CVD (yes vs. no)	3.11	1.88–4.54	<0.001
FH mutation (yes vs. no)	1.66	1.11–2.21	<0.001
ATT at baseline ( $\geq 8.0$ mm in males, $\geq 7.5$ mm in females)	2.44	1.36–3.46	<0.001
Group 2 (Group 1 as reference)	2.73	1.33–4.13	<0.001
Group 3 (Group 1 as reference)	2.18	1.08–3.28	<0.001
Group 4 (Group 1 as reference)	6.34	3.10–9.58	<0.001

2 LDL, low-density lipoprotein; CVD, cardiovascular disease; FH, familial hypercholesterolemia; ATT, Achilles tendon

3 thickening

1 **Figure Legends**

2 **Figure 1: Association between Achilles tendon thickness and major adverse**  
3 **cardiovascular events (MACE)**

4 **and age**

5 **A. Box plot of Achilles tendon thickness according to the presence of MACE**

6 Red: patients without MACE. Green: patients with MACE.

7 **B. Correlation between Achilles tendon thickness and age**

8 Red indicates female. Green indicates male.

9

10 **Figure 2: Correlation between Achilles tendon thickness and the cholesterol-year score**

11 Red: patients without major adverse cardiovascular events (MACE). Green: patients with  
12 MACE.

13

14 **Figure 3: Baseline and changes in Achilles tendon thickness according to age**

15 **A. Boxplots of Achilles tendon thickness according to age**

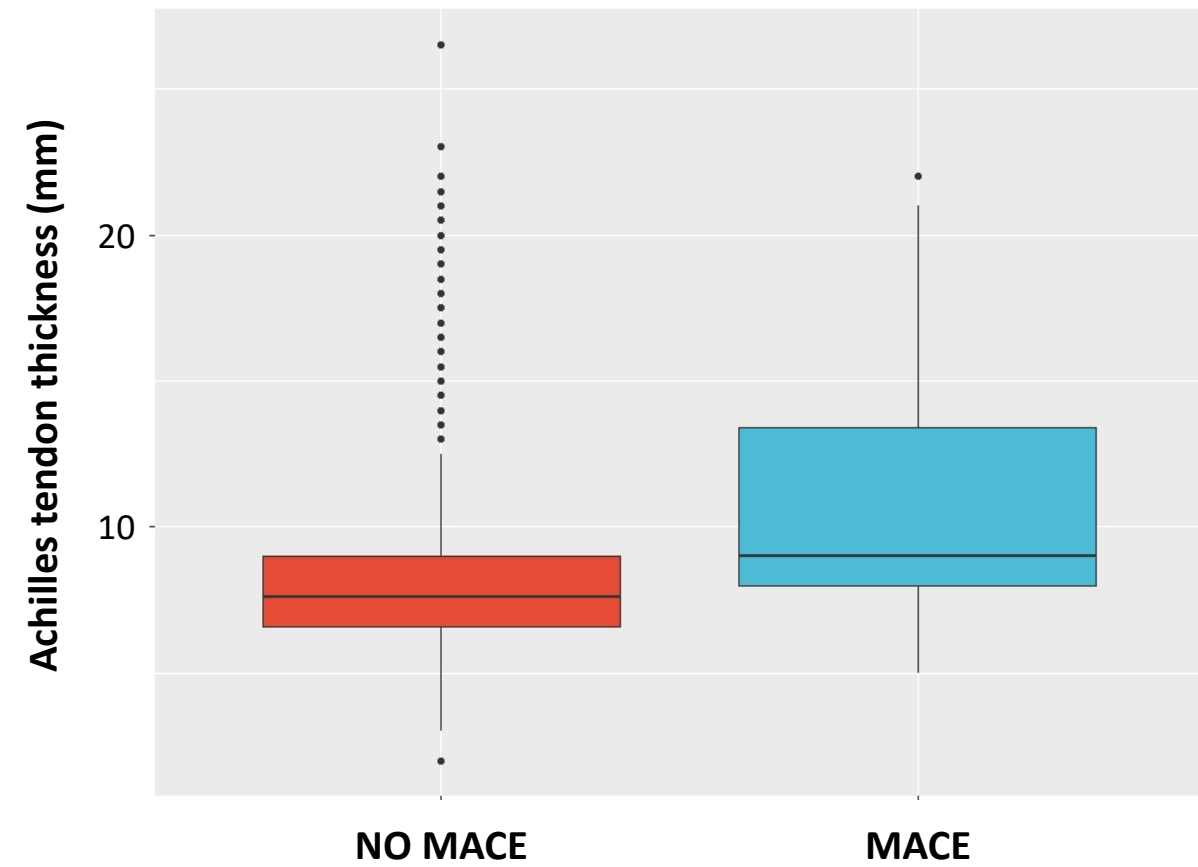
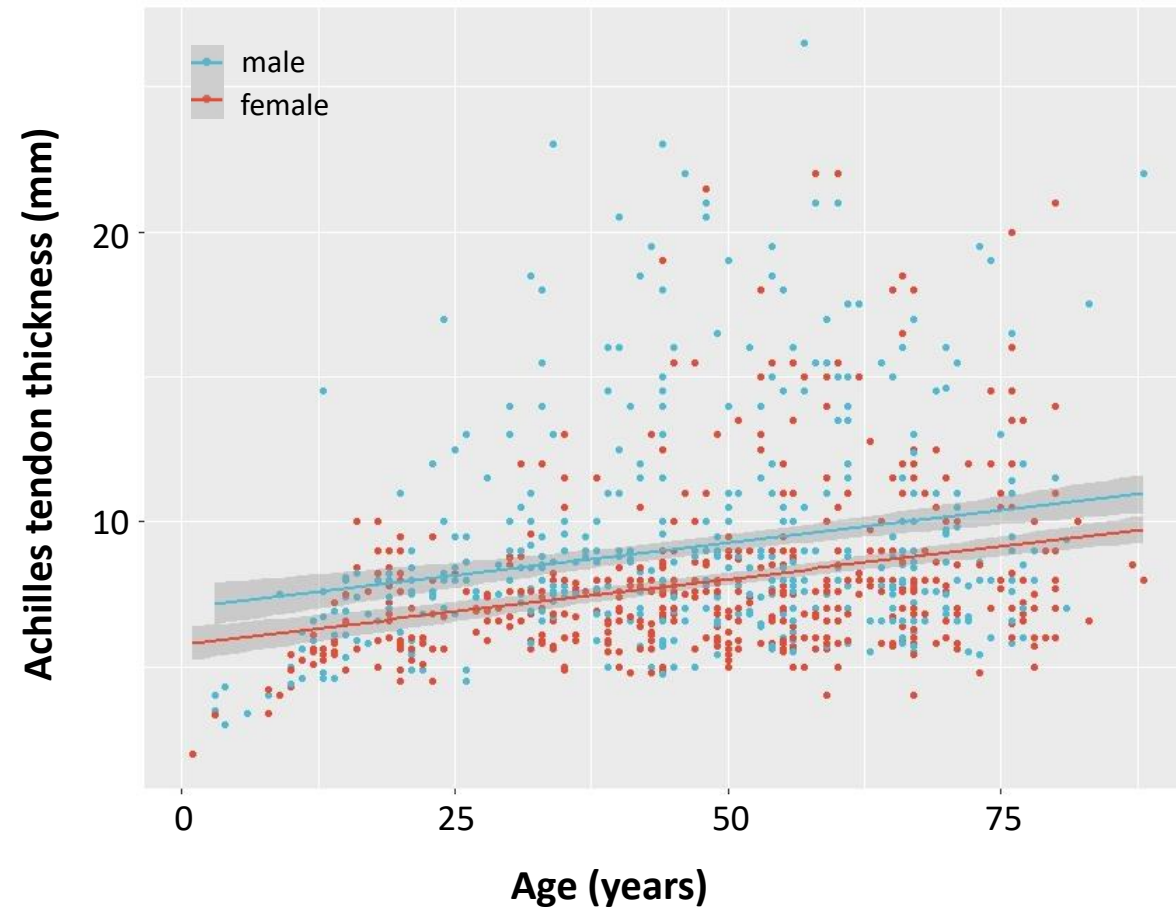
16 **B. Boxplots of changes in Achilles tendon thickness according to age**

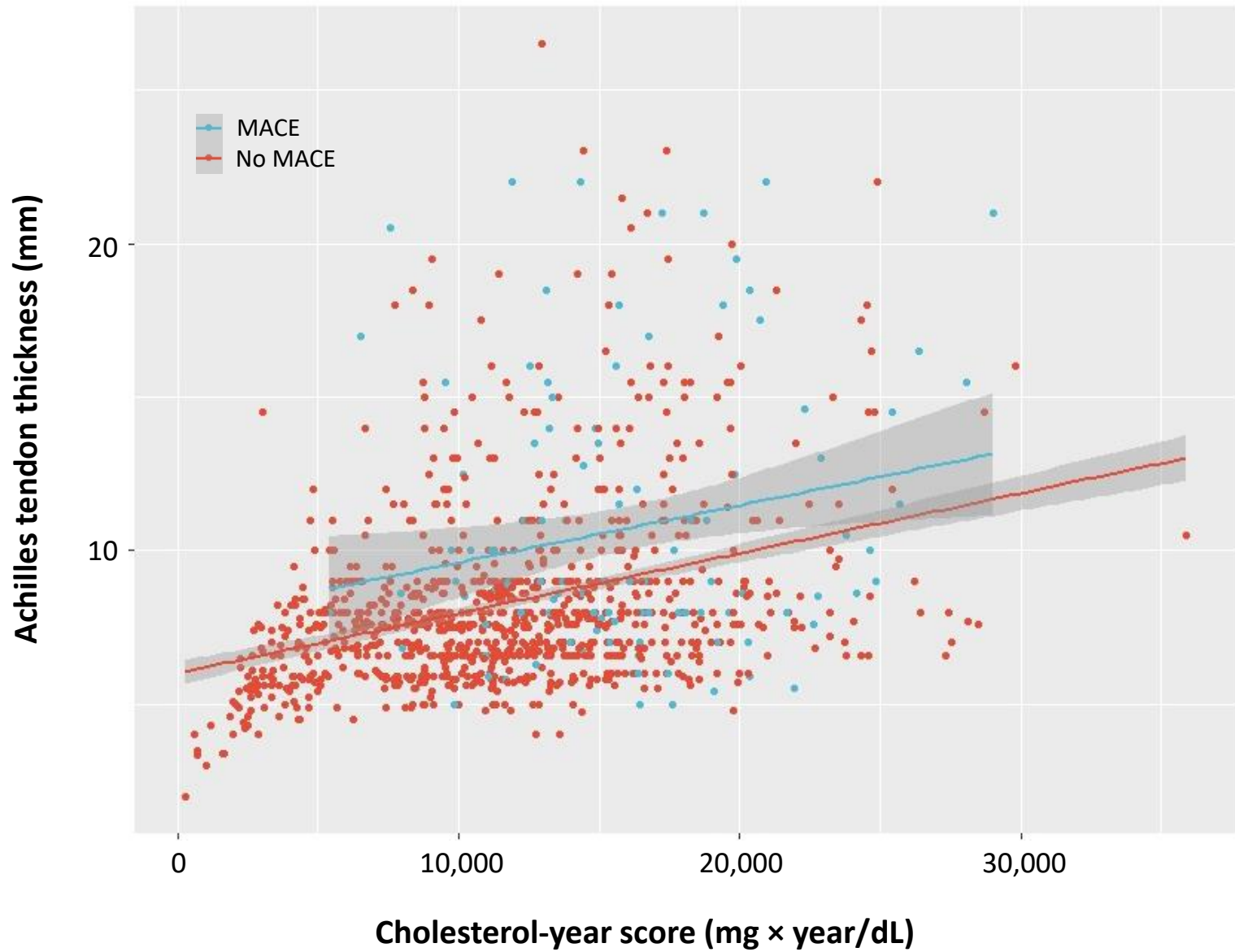
17

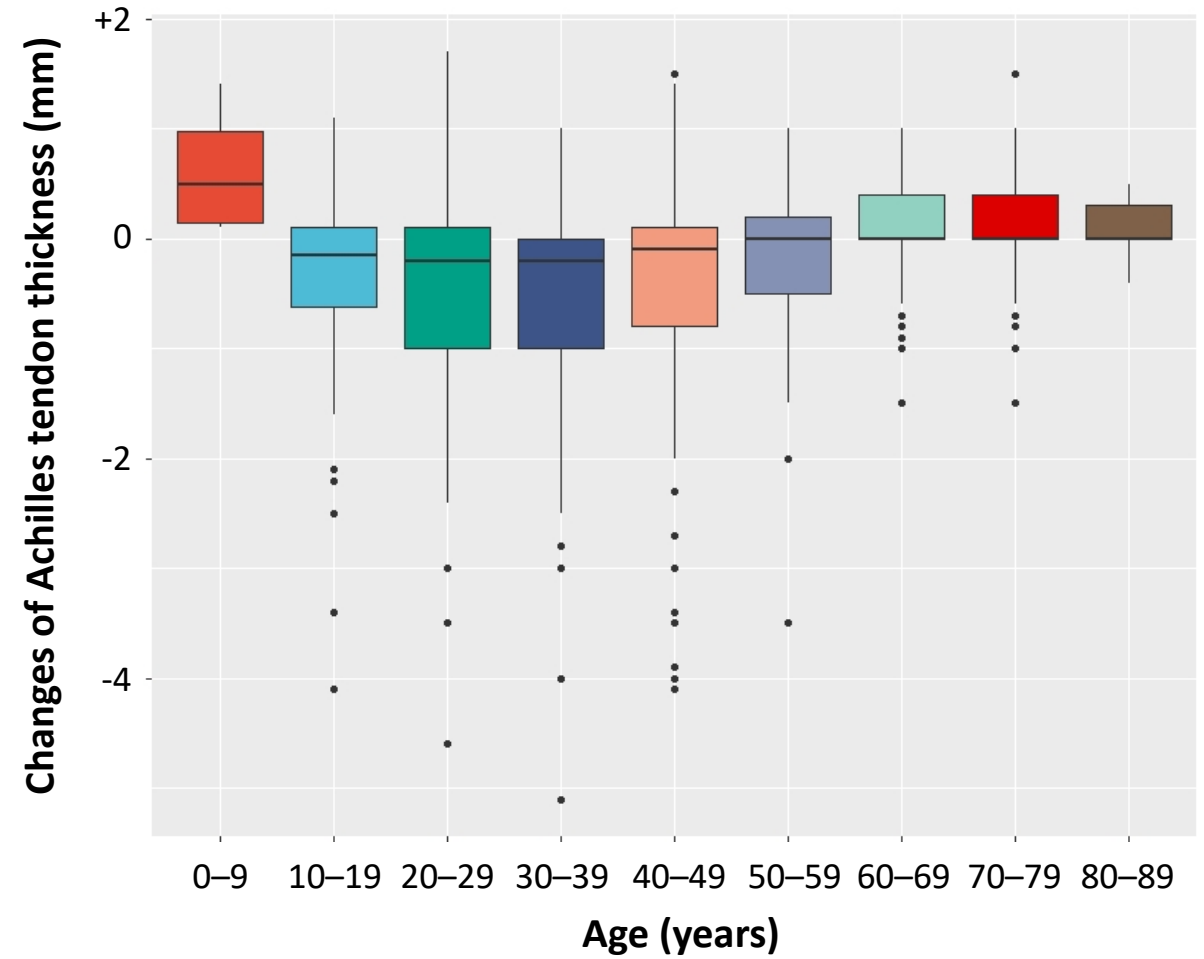
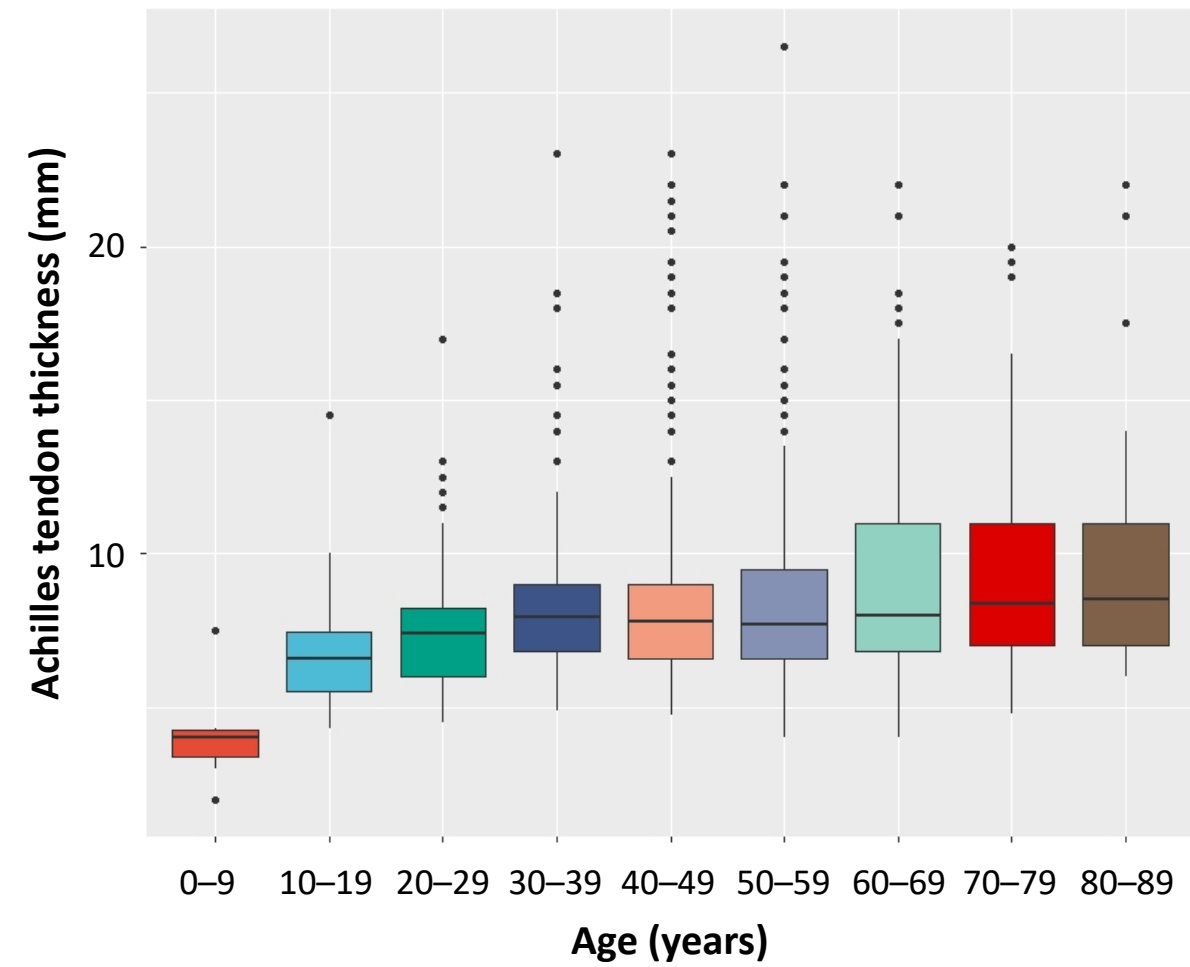
18 **Figure 4. Kaplan–Meier survival curve**

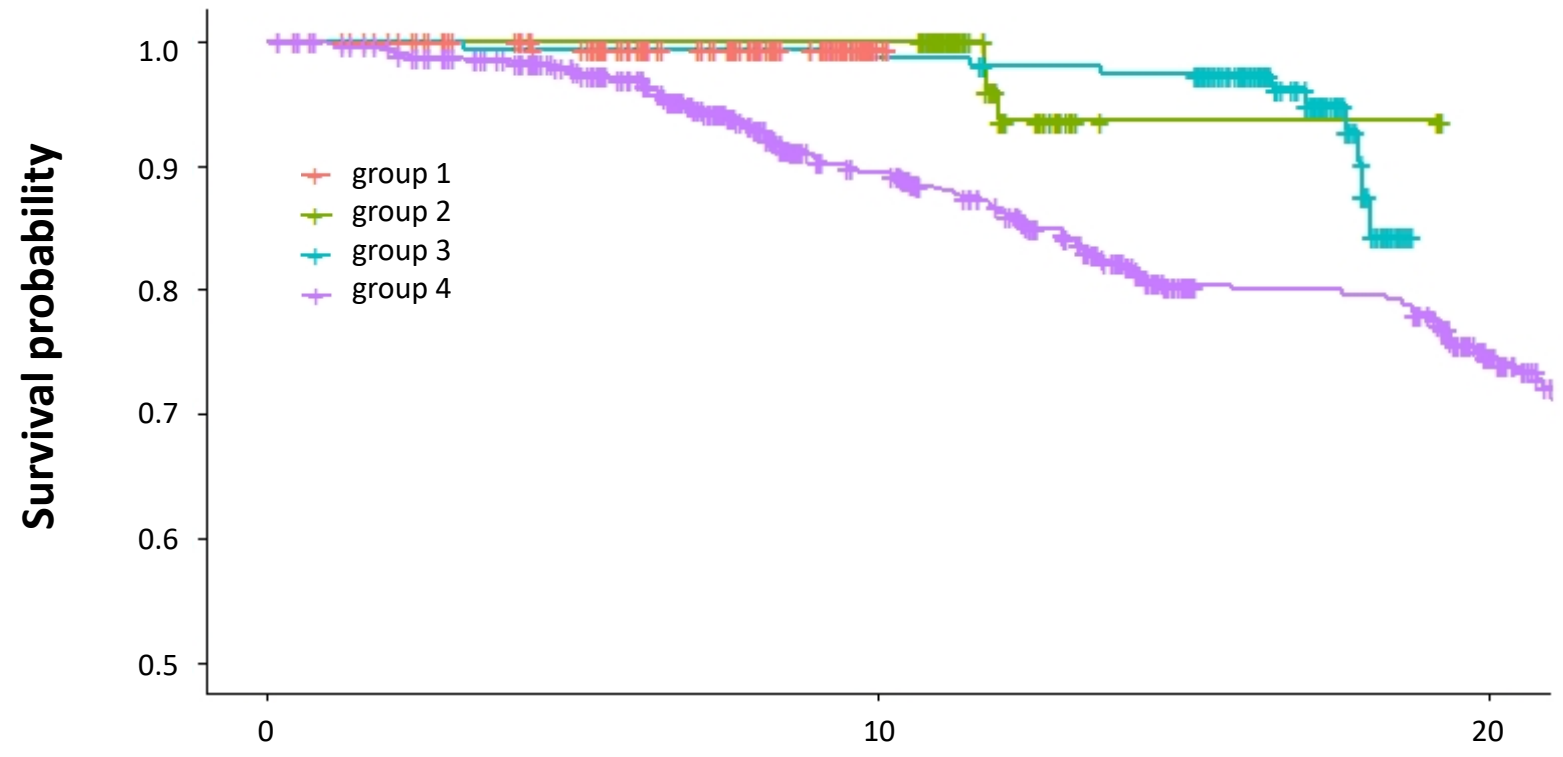
19 The x-axis represents the follow-up period (years). The y-axis represents the proportion of  
20 patients without major adverse cardiovascular events (MACE). Red: group 1. Green: group

21 2. Blue: group 3. Purple: group 4.

**A****B**







Number at risk

strata	0	10	20
+ group 1	158	6	0
+ group 2	91	72	0
+ group 3	111	57	0
+ group 4	913	647	142