

1 **Smoking, all-cause, and cause-specific mortality in individuals with diabetes**  
2 **in Mexico: an analysis of the Mexico City Prospective Study**

3 Daniel Ramírez-García<sup>1,2</sup>, Carlos A. Fermín-Martínez<sup>1,3</sup>, Paulina Sánchez-Castro<sup>1,2</sup>,  
4 Alejandra Núñez-Luna<sup>1,2</sup>, Martín Roberto Basile-Alvarez<sup>1,2</sup>, Luisa Fernández-Chirino<sup>1</sup>,  
5 Arsenio Vargas-Vázquez<sup>2</sup>, Juan Pablo Díaz-Sánchez<sup>3</sup>, Ashuin Kammar-García<sup>1</sup>, Paloma  
6 Almeda-Valdés<sup>5</sup>, Jaime Berumen-Campos<sup>6</sup>, Pablo Kuri-Morales<sup>4,7</sup>, Roberto Tapia-Conyer<sup>4</sup>,  
7 Jesus Alegre-Díaz<sup>6+</sup>, Jacqueline A. Seiglie<sup>8,9+</sup>, Neftali Eduardo Antonio-Villa<sup>10+</sup>, Omar  
8 Yaxmehen Bello-Chavolla<sup>1,7+\*</sup>

9

10 **+Joint Last authorship**

11

12 <sup>1</sup>Research Division, Instituto Nacional de Geriátria, Mexico City, Mexico. <sup>2</sup>Facultad de  
13 Medicina, Universidad Nacional Autónoma de México, Mexico City, Mexico. <sup>3</sup>MD/PhD  
14 (PECEM) Program, Facultad de Medicina, Universidad Nacional Autónoma de México,  
15 Mexico City, Mexico. <sup>4</sup>Especialidad en Medicina Preventiva, Instituto Nacional de Salud  
16 Pública, Mexico City, Mexico. <sup>5</sup>Department of Endocrinology and Metabolism, Instituto  
17 Nacional de Ciencias Médicas y Nutrición Salvador Zubirán, Mexico City, Mexico.  
18 <sup>6</sup>Experimental Research Unit, Faculty of Medicine, National Autonomous University of  
19 Mexico, Mexico City, Mexico. <sup>7</sup>Instituto Tecnológico y de Estudios Superiores de  
20 Monterrey, Monterrey, Mexico. <sup>8</sup>Diabetes Unit, Massachusetts General Hospital, Harvard  
21 Medical School, Boston, Massachusetts, USA. <sup>9</sup>Department of Medicine, Harvard Medical  
22 School, Boston, Massachusetts, USA. <sup>10</sup>Department of Endocrinology, Instituto Nacional  
23 de Cardiología Ignacio Chávez, Mexico City, Mexico.

24

25 **Correspondence:**

26 Omar Yaxmehen Bello-Chavolla. Division of Research. Instituto Nacional de Geriatria.

27 Anillo Perif. 2767, San Jerónimo Lídice, La Magdalena Contreras, 10200, Mexico City,

28 Mexico. Phone: +52 (55) 5548486885. E-mail: oyaxbell@yahoo.com.mx

29 **Funding:** This research was supported by Instituto Nacional de Geriatria in Mexico.

30

31 **CONFLICT OF INTERESTS:** The authors declare that they have no conflict of interests.

32

33 **3,158 text words; 33 references; 3 figures, 2 tables.**

34 **Running headline:** Smoking and mortality in diabetes in Mexico

35

36 **ABSTRACT (268 WORDS)**

37 **BACKGROUND:** Evidence from low- and middle-income countries regarding the effect of  
38 smoking in people with diabetes is lacking. Here, we report the association of smoking with  
39 mortality in a large cohort of Mexican adults with diabetes.

40 **METHODS:** Participants with diabetes mellitus (self-reported medical diagnosis, use of  
41 antidiabetic medications or HbA1c  $\geq 6.5\%$ ) aged 35-74 years when recruited into the  
42 Mexico City Prospective Study were included. Cox regression confounder-adjusted  
43 mortality rate ratios (RRs) associated with baseline smoking status were estimated.

44 **FINDINGS:** Among 15,975 women and 8225 men aged 35-74 years with diabetes but no  
45 other comorbidities at recruitment, 2498 (16%) women and 2875 (35%) men reported  
46 former smoking and 2753 (17%) women, and 3796 (46%) men reported current smoking.  
47 Smoking less than daily was common: 39.4% of female current smokers and 30.7% of  
48 male current smokers. During a median of 17 years of follow-up there were 5087 deaths at  
49 ages 35-74 years. Compared with never smoking, the all-cause mortality RR was 1.08  
50 (95%CI 1.01–1.17) for former smoking, 1.09 (95%CI 0.99–1.20) for non-daily smoking,  
51 1.06 (95%CI 0.96–1.16) for smoking  $< 10$  cigarettes per day (median during follow-up 4  
52 cigarettes/day) and 1.28 (95% CI 1.14–1.43) for smoking  $\geq 10$  cigarettes/day (median  
53 during follow-up 15 cigarettes/day). Excess mortality among current daily smokers was  
54 greatest for COPD, lung cancer, cardiovascular diseases, and acute diabetic  
55 complications.

56 **INTERPRETATION:** In this cohort of Mexican adults with diabetes, low-intensity daily  
57 smoking was associated with increased mortality, despite observing smoking patterns  
58 which are different from other populations. Of those smoking  $\geq 10$  cigarettes per day, over  
59 one fifth were killed by their habit. Quitting substantially reduced these risks.

60 **Keywords:** Smoking, diabetes, mortality, Mexican population

## 61 **RESEARCH IN CONTEXT**

### 62 Evidence before this study

63 We conducted a search in PubMed to identify studies on smoking-related mortality in  
64 individuals with diabetes before September 1<sup>st</sup>, 2023, using the terms ((diabetes mellitus)  
65 OR (type 2 diabetes mellitus)) AND ((smoking) OR (tobacco)) AND ((mortality) OR  
66 (survival analysis) OR (death)). We identified a meta-analysis published in 2015 which  
67 analysed data from 1,132,700 participants with diabetes from 89 cohort studies. Among  
68 current and former smokers, the pooled adjusted relative risk for all-cause mortality was  
69 1.55 (95% CI 1.46–1.64) and 1.19 (95% CI 1.11–1.28), respectively. Among current  
70 smokers, there was considerably higher risk of death due to cardiovascular disease,  
71 coronary heart disease, stroke, peripheral arterial disease, and heart failure. Most included  
72 studies were conducted in high income countries and only one was done in Latin America  
73 (Argentina, 1,730 participants). In Mexico, epidemiological studies related to smoking have  
74 been primarily descriptive in nature. A previous study of the MCPS that analysed all-cause  
75 smoking-related mortality among disease-free individuals found adjusted rate ratios among  
76 daily smokers of 1.17 (95% CI 1.10–1.25) for those using <10 cigarettes/day and 1.54  
77 (95% CI 1.42–1.67) for those using ≥10 cigarettes/day. In this study, mortality risk in  
78 people with diabetes was not assessed separately. Instead, mortality risk estimates were  
79 obtained for several chronic diseases as a group. No other studies have analysed changes  
80 in smoking habits and smoking-related mortality in Mexican individuals with diabetes.

### 81 Added value of this study

82 To our knowledge, this is the first analysis of longitudinal data of Mexican adults with  
83 diabetes (n=24,200) followed over 17 years, to examine the association between smoking  
84 and all-cause and cause-specific mortality. Compared with never smokers with diabetes,  
85 former and daily smokers with diabetes had elevated mortality. Among daily smokers there  
86 was higher risk of death due to cardiovascular disease, acute diabetes complications, lung

87 cancer and COPD. Our results are generally consistent with previous analyses that have  
88 found smoking as a significant risk factor for higher mortality in individuals with diabetes.  
89 Our estimates, however, are comparably lower for all-cause mortality, possibly related to  
90 distinct smoking habits specific to the Mexican population with diabetes.

91 Implications of all available evidence

92 Our results confirm that smoking is a significant risk factor for all-cause and cause-specific  
93 mortality among Mexican adults with diabetes. Strategies to promote smoking cessation  
94 among individuals with diabetes should be encouraged, particularly given that tobacco use  
95 is a modifiable risk factor. This is especially meaningful in middle- to lower-income  
96 countries like Mexico, where diabetes prevalence is increasing and achieving glycaemic  
97 targets remains a challenge.

98

## 99 INTRODUCTION

100 Diabetes mellitus is a significant public health problem, with over 530 million individuals  
101 living with the disease and around 6.7 million deaths attributable to diabetes worldwide in  
102 2021<sup>1</sup>. In Mexico, diabetes prevalence has tripled in the last three decades<sup>2,3</sup> and currently  
103 affects one in six Mexican adults<sup>1</sup>. Besides the microvascular complications associated  
104 with this condition, diabetes is a well-documented accelerant of cardiovascular disease  
105 (CVD), which is the leading cause of premature mortality in Mexico. While comprehensive  
106 risk factor management to reduce CVD risk in people with diabetes is an integral aspect of  
107 diabetes care<sup>4</sup>, addressing modifiable risk factors to reduce CVD burden remains a  
108 challenge in Mexico<sup>2</sup>. A key pervasive modifiable risk factor for diabetes and CVD  
109 incidence and mortality is tobacco smoking. Despite ratification of the WHO's Framework  
110 on Tobacco Control (FCTC) in 2014, prevalence of current smoking among Mexican adults  
111 has remained relatively stable in the past decade, with nearly 1 in every 5 Mexican adults  
112 reporting current smoking in 2016<sup>5</sup>. While broader implementation of the FCTC is needed,  
113 characterizing mortality risk attributed to smoking in Mexican adults with diabetes could  
114 help inform tailored strategies for smoking cessation in this population.

115 The Mexico City Prospective Study (MCPS) is a large blood-based prospective study of  
116 150,000 adults who were recruited between 1998 and 2004 and have been tracked for  
117 cause-specific mortality ever since. A previous analysis of the MCPS identified an  
118 increased risk of all-cause mortality among disease-free former and current smokers. Risk  
119 of all-cause mortality was increased even among adults who reported low-intensity daily  
120 smoking. However, participants with diabetes and other chronic diseases were excluded to  
121 minimize reverse causality<sup>6</sup>. Despite the important contribution of this analysis to the  
122 literature on smoking and mortality, smoking patterns in people with diabetes as well as  
123 smoking-related mortality in Mexican adults with diabetes remains unexplored. In this  
124 study, we aim to characterize patterns of tobacco use in individuals with diabetes and to

125 estimate the effect of smoking on all-cause and cause-specific mortality, exploring the  
126 influence of diabetes-related factors (glycaemic control and disease duration) as potential  
127 modifiers of this association.

## 128 **METHODS**

### 129 Cohort characteristics

130 We analysed data from participants enrolled in the MCPS, a prospective, population-based  
131 cohort study with a baseline survey conducted from 1998 to 2004<sup>7</sup>. Households from two  
132 urban districts of Mexico City (Coyoacán and Iztapalapa) were visited, and every adult ≥35  
133 years was invited to participate. In total, 159,755 individuals were recruited, and  
134 information was collected regarding age, sex, lifestyle habits, self-reported medical history,  
135 use of medications, and socio-demographic information including education, civil status,  
136 occupation, and monthly income. Clinical measurements (weight, height, and blood  
137 pressure) were obtained, and a non-fasting 10-mL blood sample was collected for  
138 subsequent analysis. From 2015-2019, a follow-up survey was conducted on 10,143  
139 surviving participants, obtaining similar data regarding lifestyle habits, medical history,  
140 clinical measurements, and another blood sample as described previously<sup>8</sup>. Blood  
141 samples, both at baseline and resurvey examinations, were stored overnight in a central  
142 laboratory, separated into plasma and buffy coat, and then frozen to –80°C. Afterwards,  
143 samples were shipped to the University of Oxford for analysis and storage. Assays of  
144 HbA1c were performed from buffy coat samples in the Clinical Trial Service Unit and  
145 Epidemiological Studies Unit’s Wolfson laboratory, which has International Organization for  
146 Standardization (ISO)-17025 accreditation, as described previously<sup>9</sup>.The study protocol  
147 was approved by the corresponding ethics committees at the Mexican Ministry of Health,  
148 the Mexican National Council for Science and Technology, and the University of Oxford. All  
149 study participants provided written informed consent.

150

151 Study population

152 We defined diabetes mellitus according to self-reported medical diagnosis of diabetes,  
153 use of diabetes medication (biguanides, sulfonylureas, insulin or other), or HbA1c  $\geq 6.5\%$ <sup>10</sup>.  
154 Diagnosed diabetes was defined as previous medical diagnosis of diabetes or use of  
155 glucose lowering medication and undiagnosed diabetes as HbA1c  $\geq 6.5\%$  in an individual  
156 without a previous diagnosis of diabetes. Given the heterogeneity of diabetes mellitus<sup>11</sup>,  
157 and to better account for diabetes-related variables, the primary analysis was restricted to  
158 individuals with previously diagnosed or undiagnosed diabetes mellitus, excluding  
159 participants without diabetes. To address the possibility of reverse causality in the  
160 association between smoking and all-cause mortality, we excluded participants who  
161 reported comorbidities other than diabetes at baseline, including ischaemic heart disease,  
162 pulmonary disease, chronic kidney disease, cirrhosis, or cancer. We also excluded  
163 individuals with missing covariates or with uncertain mortality linkage.

164 Smoking related variables

165 We defined smoking status according to baseline interview information. Never smokers  
166 were classified as those who reported never smoking, former smokers as those who  
167 reported having smoked previously but not currently and current smokers as those having  
168 ever smoked and smoking currently (daily or non-daily). We classified smoking intensity  
169 into five categories (never smoker, ex-smoker, current non-daily smoker, current daily  
170 smoker  $< 10$  cigarettes per day, and current daily smoker  $\geq 10$  cigarettes per day), and age  
171 when started smoking into three categories ( $< 15$  years, 15-23 years,  $\geq 24$  years). In former  
172 smokers, no data was available regarding time since they stopped smoking; therefore, we  
173 were unable to explore this characteristic. We also analysed changes in smoking status  
174 between baseline interview and resurvey to explore changes in smoking behaviour over  
175 the study period. To do this, we matched surviving individuals who were included in the  
176 main mortality analysis at baseline and resurveyed during the 2015-2019 period. Then, we



177 calculated the proportion of participants with a given smoking status at baseline and the  
178 proportion at resurvey.

#### 179 Mortality follow-up

180 Mortality follow-up of participants was done through electronic probabilistic linkage to  
181 death registries, with deaths tracked up to December 31<sup>st</sup>, 2020, and registered according  
182 to the International Classification of Diseases 10<sup>th</sup> Revision (ICD-10). Cause-specific  
183 mortality was classified into several categories (cardiovascular, myocardial infarction,  
184 stroke, other vascular, acute diabetes complications [diabetic coma and ketoacidosis], lung  
185 cancer, non-lung cancer, COPD, other respiratory, renal, hepatobiliary, and gastric) in  
186 accordance with the underlying causes of death determined by study clinicians. The  
187 specific ICD-10 codes used for every cause and the number of deaths in each of them are  
188 provided in **Supplementary Table 1**.

#### 189 Statistical analyses

190 For descriptive analyses, we calculated mean and standard deviation in continuous  
191 variables (median and interquartile range for HbA1c, number of cigarettes per day and age  
192 started smoking), and proportions for categorical variables. To explore the association  
193 between smoking, all-cause and cause-specific mortality amongst individuals with  
194 diabetes, we fitted Cox proportional hazard regression models to estimate adjusted hazard  
195 ratios (HR) for former and current smokers using individuals with diabetes who were never  
196 smokers as the reference group with analyses restricted to premature mortality (deaths at  
197 ages 35-74 years). All models were stratified by sex and age at risk (5-year age groups)<sup>12</sup>  
198 and adjusted for place of residence (Coyoacán or Iztapalapa), educational level  
199 (elementary, high school, university, other), body mass index (BMI), HbA1c, time since  
200 diabetes diagnosis, and alcohol consumption. We tested the proportional hazards  
201 assumption using Schoenfeld residuals. As sensitivity analyses, we fitted separate Cox  
202 models for males and females to further characterize whether there are different risk

203 profiles by sex. We estimated attributable fraction with the formula  $(RR - 1) / RR$ . In the  
204 text, conventional 95% confidence intervals (CI) comparing two groups are used. In the  
205 figures, however, group specific 95% CIs, are shown for every RR (including the reference  
206 group); these were estimated using floating absolute risks to reflect the amount of  
207 information in each category<sup>13</sup>. All statistical analyses were conducted using R software  
208 version 4.2.1.

## 209 **RESULTS**

### 210 Smoking status and baseline characteristics of participants with diabetes

211 Among 159,755 participants recruited from 1998 to 2004, we identified 29,948 individuals  
212 with diabetes at baseline. Of these, 3,953 were excluded because they had comorbidities  
213 other than diabetes (ischemic heart disease, pulmonary disease, chronic kidney disease,  
214 cirrhosis, or cancer) and another 1,795 were excluded due to missing covariate or  
215 mortality data. In total, we included 24,200 participants with diabetes with complete data  
216 on the mortality analyses (**Supplementary Figure 1**). Among women, 10,724 (67.1%)  
217 reported being never smokers, 2,498 (15.6%) former smokers, and 2,753 (17.2%) current  
218 smokers at baseline, of whom 1,667 (60.6%) were daily smokers and 1,086 (39.4%) non-  
219 daily smokers (**Table 1**). Compared to female never smokers, female daily smokers were  
220 younger, had worse glycaemic control (especially those smoking <10 cig/d) and a slightly  
221 higher body mass index (BMI). Among men, there was a lower proportion of never  
222 smokers with 1,554 (18.89%), and higher proportions of former and current smokers, with  
223 2,875 (34.95%) and 3,796 (46.2%), respectively. Among current smokers, 2,629 men  
224 (69.3%) were daily smokers and 1,167 (30.7%) were non-daily smokers. Compared to  
225 male never smokers, male daily smokers were younger, had worse glycaemic control, and  
226 the median age at which they started smoking was 17 years (IQR 15, 20). In women, the  
227 greatest proportion of participants were never smokers and the proportion of current  
228 smokers decreased with age. Cessation, however, was less common in this group with a

229 consistent number of former smokers across all age cohorts (**Figure 1**). In men, on the  
230 other hand, there was a higher proportion of current smokers and the proportion of former  
231 smokers increased with age. The proportion of never smokers was relatively low  
232 regardless of age. Amongst current smokers, the prevalence of non-daily smoking was  
233 higher at younger ages for both men and women, low-intensity daily smoking (<10 cig/day)  
234 increased for older individuals irrespective of sex, and high-intensity smoking remained  
235 stable throughout all age groups (**Supplementary Figure 2**).

#### 236 Smoking status of participants with diabetes at resurvey

237 Smoking status changed significantly during follow-up. Among 10,143 participants  
238 resurveyed, we identified 1,246 individuals initially classified with diabetes (diagnosed and  
239 undiagnosed) whose data was used in the main mortality analyses. Of these surviving  
240 participants, 666 (53.5%) were never smokers, 239 (19.2%) were former smokers and 341  
241 (27.4%) were current smokers at baseline. Among never smokers, most remained as such  
242 and <1% started smoking during follow-up. Similarly, among former smokers, 71.5%  
243 remained as former smokers and only 3.7% restarted smoking (with the remaining 24.7%  
244 reporting never smoking at resurvey). However, changes in smoking status were most  
245 noticeable in current smokers. Over 59% reported quitting during the follow-up period, and  
246 only 28.4% continued smoking at resurvey. The median number of cigarettes smoked per  
247 day at resurvey among current smokers and former smokers was similar. At resurvey,  
248 those who were former smokers had better glycaemic control than current smokers (**Table**  
249 **2, Supplementary Figure 3**).

#### 250 All-cause mortality and smoking status among individuals with diabetes

251 Among 24,200 participants with diabetes and after a median follow-up of 17.65 years,  
252 there were a total of 5,087 deaths at ages 35 to 74 years, 2,893 in women and 2,194 in  
253 men. Compared to never smokers, there was an increased risk for all-cause mortality  
254 among former (HR 1.08, 95%CI 1.01–1.17) and current smokers (HR 1.11, 95%CI 1.03–

255 1.20, **Figure 2A**), with similar relative risks in daily and non-daily smokers (**Figure 2B**).  
256 Among daily smokers, there was increased risk in individuals who smoked  $\geq 10$   
257 cigarettes/day (HR 1.28, 95%CI 1.14–1.43, **Figure 2C**). There was similar mortality risk  
258 across age categories, being highest among those who started smoking  $< 15$  years (HR  
259 1.19, 95%CI 1.03–1.37, **Figure 2D**). Exploring all-cause mortality risk in former smokers,  
260 we found increased risk for participants who previously smoked  $\geq 10$  cigarettes/day (HR  
261 1.16, 95%CI 1.02–1.31) but similar RRs irrespective of age starting (**Figure 2E, F**).  
262 Estimating attributable fraction, our results indicate that 7% of deaths in former smokers  
263 and around 22% in  $\geq 10$  cigarettes/day smokers aged 35-74 years could be prevented by  
264 avoiding smoking exposure in persons with diabetes.

#### 265 Smoking and cause-specific mortality among individuals with diabetes

266 Compared to never smokers, daily smokers had a significantly higher risk of  
267 cardiovascular mortality especially in those smoking  $\geq 10$  cigarettes/day (**Figure 3**). There  
268 was an increased risk of myocardial infarction related mortality in participants who smoked  
269  $\geq 10$  cigarettes/day, higher risk of other vascular deaths in those who smoked  $\geq 10$   
270 cigarettes/day, and a significantly higher risk for acute diabetes complications in  
271 participants who smoked  $\geq 10$  cigarettes/day. As expected, there were higher risks of death  
272 due to lung cancer and COPD especially in those who smoked  $< 10$  and  $\geq 10$  cigarettes per  
273 day, respectively. There was no association between smoking and mortality due to renal  
274 causes, stroke, hepatobiliary or gastrointestinal deaths, nor non-lung cancer, although the  
275 power to detect an association was probably low in the latter four categories. Finally,  
276 among former smokers, there was an increased risk of death due to acute diabetes  
277 complications, COPD, and hepatobiliary (**Supplementary Figure 4**).

#### 278 Sensitivity analysis

279 Separate models for men and women were fitted to determine whether there are different  
280 risks by sex, results which are shown in **Supplementary Figure 5**. There were a total of

281 3,528 deaths at ages  $\geq 75$  years, 2,198 in women and 1,330 in men. The estimated RR are  
282 shown in **Supplementary Figure 6**.

## 283 **DISCUSSION**

284 In this study of 24,200 participants with diabetes and no other comorbidities in the Mexico  
285 City Prospective Study, daily and non-daily smoking were associated with an increased  
286 risk for all-cause mortality in a dose-dependent manner. Daily smokers had higher  
287 mortality risk in those who smoked  $\geq 10$  cigarettes/day and in participants who started  
288 smoking aged  $< 15$  years. Notably, over 50% of current smokers at baseline had stopped  
289 smoking at resurvey, which suggests a significant change in smoking habits during follow-  
290 up. Daily smokers were also at increased risk of death due to causes directly related to  
291 smoking (cardiovascular disease, myocardial infarction, other vascular disease, lung  
292 cancer and COPD), but also due to acute diabetes complications. Among former smokers  
293 with diabetes, a significant proportion remained as such at resurvey, with increased  
294 mortality risk in those who previously smoked  $\geq 10$  cigarettes/day and in those who started  
295 smoking at ages 15-24. Former smokers were at increased risk of death primarily due to  
296 COPD, hepatobiliary disease and, interestingly, acute diabetes complications as well.  
297 These findings confirm that smoking represents an excess risk that is modifiable in this  
298 population and support the notion that it remains a significant risk factor to be considered  
299 to reduce cardiovascular risk as part of long-term diabetes management.

300 The effect of smoking on all-cause and cause-specific mortality has been extensively  
301 reported in the general population<sup>14,15</sup> and numerous studies have also explored the  
302 association between smoking and mortality risk in individuals with diabetes, finding a  
303 predominately positive association<sup>16-18</sup>. Regarding cause-specific mortality, smoking  
304 among individuals with diabetes has been associated with significantly increased risk for  
305 coronary heart disease, stroke, and peripheral arterial disease<sup>19,20</sup>. Our findings in this  
306 subgroup of participants are in line to those reported previously for all-cause mortality,

307 albeit with lower estimates for both former and daily smokers<sup>19</sup>; and our cause-specific  
308 mortality analysis identified similar risk associations, primarily with cardiovascular disease  
309 and myocardial infarction for heavy smokers, but not with stroke probably related to lack of  
310 statistical power in our study population. Interestingly, our results show a significant impact  
311 on death related to acute hyperglycaemic crises in former and daily smokers. Smoking is  
312 not considered a typical risk factor for the development of either diabetic ketoacidosis or  
313 hyperglycaemic hyperosmolar state; however concomitant illness such as myocardial  
314 infarction or cerebrovascular events can be precipitating causes (among others like poor  
315 adherence to treatment or infection)<sup>21,22</sup>. Consequently, the observed association in our  
316 analysis might be due to poor baseline glycaemic control and the known association  
317 between smoking and cardiovascular events, which might lead to higher risk of developing  
318 a precipitating cause and increased risk of acute glycaemic crises mortality in daily and  
319 former smokers. These findings should further strengthen the fact that smoking cessation  
320 represents a pivotal intervention to reduce mortality risk for individuals with diabetes.

321 In Mexico, a previous analysis of the MCPS on healthy individuals found that smoking was  
322 responsible for significantly higher mortality risk among active smokers with a dose-  
323 response relationship<sup>6</sup>, representing the first prospective analysis of smoking-related  
324 mortality in Mexican population. Although smoking prevalence in Mexico declined  
325 significantly from 2000 to 2010, there has been a slight increase in prevalence between  
326 2011 and 2016. Moreover, prevalence of previously diagnosed diabetes has increased  
327 dramatically in Mexico reaching 10.2% in 2021<sup>3</sup>. Even though smoking cessation is  
328 advised for every person with diabetes, it has been suggested that individuals with chronic  
329 diseases, particularly younger persons, have higher prevalence of smoking<sup>23,24</sup>. Notably,  
330 the smoking trends among individuals with diabetes in Mexico are largely unknown, and so  
331 is the mortality risk associated with smoking, thus the rationale to explore tobacco use in  
332 this subgroup of participants. It should be noted as well that previous analyses of MCPS

333 have found high mortality rates in individuals with diabetes, which accounts for at least a  
334 third of all deaths at ages 35-74 years<sup>25</sup>. Given this conditions, even if the smoking-related  
335 RRs found in this analysis are somewhat lower than previously reported in individuals with  
336 diabetes<sup>19</sup> and in disease-free participants<sup>6</sup>, the smoking-related mortality risk for  
337 individuals with diabetes might be similar or even greater in this population. Finally, it  
338 should be highlighted that several interventions have proved effective to promote smoking  
339 cessation in individuals with diabetes<sup>4,26</sup>, which emphasizes the importance of improving  
340 public health policies directed towards smoking cessation.

#### 341 *Strengths and limitations*

342 Our study has several strengths, including its prospective design, which allows to establish  
343 a potentially causal association between mortality risk and smoking in individuals with  
344 diabetes, the large sample size obtained from two urban districts in Mexico City and the  
345 analysis of resurvey data to assess changes of smoking habits during follow-up. We  
346 recognize however some limitations which should be considered to adequately interpret  
347 our findings. First, information regarding characterization of former smokers is incomplete,  
348 which did not allow us to estimate the effect of time since smoking cessation in all-cause  
349 mortality. Second, because resurvey information was collected only in a subset of surviving  
350 participants, we were unable to explore changes in smoking exposure during follow-up for  
351 every individual and, consequently, our estimates using baseline interview information do  
352 not account for changes in smoking patterns over time, which might lead to a potential  
353 underestimation of RRs. Reverse causality might also be a concern. Diabetes diagnosis  
354 might change the smoking status of participants which might be of concern in former  
355 smokers and in participants with undiagnosed diabetes. Given that we have limited  
356 information regarding why and when former smokers quitted and the precise moment  
357 undiagnosed participants were diagnosed with diabetes, caution should be taken  
358 regarding our estimates in these categories. Finally, due to the observational nature of the

359 study, we are unable to rule out residual confounding despite controlling for known  
360 modifiers of mortality risk in statistical analyses.

361 *Conclusions and perspectives*

362 In summary, our results highlight that smoking in individuals with diabetes still represents  
363 an important risk factor for all-cause and cause-specific mortality. Former smokers with  
364 diabetes are at increased risk dependent on previous smoking intensity, whilst daily  
365 smokers have a dose-dependent increase in mortality risk, particularly for individuals who  
366 started smoking at younger ages. Notably, smoking is associated with higher risk of acute  
367 diabetes complications, which support the view that smoking cessation is still a relevant  
368 target to improve diabetes management and that it should be strongly recommended  
369 during patient counselling.



## 370 **ACKNOWLEDGMENTS**

371 This project was registered and approved by the Research Committee at Instituto Nacional  
372 de Geriatria, project number DI-PI-006/2020. CAFM is enrolled at the PECEM Program of  
373 the Faculty of Medicine at UNAM. DRG and CAFM are supported by CONACyT. The  
374 authors thank the participants for their willingness to take part in this prospective study 20  
375 years ago. This research was conducted using Mexico City Prospective Study (MCPS)  
376 data obtained through an open-access data request (application number 2022-012). We  
377 want to thank Jonathan Emberson and Diego Aguilar-Ramirez for their very thoughtful  
378 comments and methodological support on this manuscript.

## 379 **AUTHOR CONTRIBUTIONS**

380 Establishing the cohort: JBC, PKM, JAD and RTC. Obtaining funding: JBC, PKM, JAD,  
381 RTC and OYBC. Data acquisition, analysis, or interpretation of data: DRG, OYBC, CAFM,  
382 PSC, ANL, MRBA, LFC, AVV, JPE, JPDS, AKG, PAV, PKM, RTC, JAD, JAS, NEAV.  
383 Drafting first version of manuscript: DRG, OYBC. Critical revision of the report for  
384 important intellectual content: All authors. All authors have seen and approved the final  
385 version and agreed to its publication. Each author contributed important intellectual  
386 content during manuscript drafting or revision and accepts accountability for the overall  
387 work by ensuring that questions pertaining to the accuracy or integrity of any portion of the  
388 work are appropriately investigated and resolved.

389 **DATA AVAILABILITY:** Data from the Mexico City Prospective Study are available to bona  
390 fide researchers. For more details, the study's Data and Sample Sharing policy may be  
391 downloaded (in English or Spanish) from <https://www.ctsu.ox.ac.uk/research/mcps>.  
392 Available study data can be examined in detail through the study's Data Showcase,  
393 available at <https://datashare.ndph.ox.ac.uk/mexico/>. Code is available for reproducibility  
394 of results at [https://github.com/oyaxbell/smoking\\_diabetes\\_mcps/](https://github.com/oyaxbell/smoking_diabetes_mcps/)

395 **CONFLICT OF INTEREST/FINANCIAL DISCLOSURE:** Nothing to disclose.

396 **FUNDING:** This research was supported by Instituto Nacional de Geriatria in Mexico. The  
397 funding sources had no role in the design, conduct or analysis of the study or the decision  
398 to submit the manuscript for publication.

399 **REFERENCES**

- 400 1. International Diabetes Federation. *IDF Diabetes Atlas*. 10th ed. Internatinonal  
401 Diabetes Federation; 2021.
- 402 2. Bello-Chavolla OY, Rojas-Martinez R, Aguilar-Salinas C, Hernández-Avila M.  
403 Epidemiology of diabetes mellitus in Mexico. *Nutr Rev*. 2017;75(suppl 1).  
404 doi:10.1093/nutrit/nuw030
- 405 3. Shamah-Levy T, Romero-Martínez M, Barrientos-Gutierrez T. *Encuesta Nacional*  
406 *de Salud y Nutrición 2021 Sobre Covid-19. Resultados Nacionales*. Instituto Nacional de  
407 Salud Pública; 2022.
- 408 4. ElSayed NA, Aleppo G, Aroda VR, et al. 5. Facilitating Positive Health Behaviors  
409 and Well-being to Improve Health Outcomes: Standards of Care in Diabetes—2023.  
410 *Diabetes Care*. 2023;46(Supplement\_1):S68-S96. doi:10.2337/dc23-S005
- 411 5. Zavala-Arciniega L, Reynales-Shigematsu LM, Levy DT, et al. Smoking trends in  
412 Mexico, 2002–2016: before and after the ratification of the WHO's Framework Convention  
413 on Tobacco Control. *Tob Control*. 2020;29(6):687-691. doi:10.1136/tobaccocontrol-2019-  
414 055153
- 415 6. Thomson B, Tapia-Conyer R, Lacey B, et al. Low-intensity daily smoking and  
416 cause-specific mortality in Mexico: prospective study of 150 000 adults. *Int J Epidemiol*.  
417 2021;50(3):955-964. doi:10.1093/ije/dyab013
- 418 7. Tapia-Conyer R, Kuri-Morales P, Alegre-Díaz J, et al. Cohort Profile: The Mexico  
419 City Prospective Study. *Int J Epidemiol*. 2006;35(2):243-249. doi:10.1093/ije/dyl042
- 420 8. Aguilar-Ramirez D, Alegre-Díaz J, Gnatiuc L, et al. Changes in the Diagnosis and  
421 Management of Diabetes in Mexico City Between 1998–2004 and 2015–2019. *Diabetes*  
422 *Care*. 2021;44(4):944-951. doi:10.2337/dc20-2276
- 423 9. Herrington WG, Alegre-Díaz J, Wade R, et al. Effect of diabetes duration and  
424 glycaemic control on 14-year cause-specific mortality in Mexican adults: a blood-based  
425 prospective cohort study. *Lancet Diabetes Endocrinol*. 2018;6(6):455-463.  
426 doi:10.1016/S2213-8587(18)30050-0
- 427 10. ElSayed NA, Aleppo G, Aroda VR, et al. 2. Classification and Diagnosis of  
428 Diabetes: Standards of Care in Diabetes—2023. *Diabetes Care*.  
429 2023;46(Supplement\_1):S19-S40. doi:10.2337/dc23-S002
- 430 11. Ahlqvist E, Storm P, Käräjämäki A, et al. Novel subgroups of adult-onset diabetes  
431 and their association with outcomes: a data-driven cluster analysis of six variables. *Lancet*  
432 *Diabetes Endocrinol*. 2018;6(5):361-369. doi:10.1016/S2213-8587(18)30051-2

- 433 12. Carstensen B. *Epidemiology with R*. Oxford University Press; 2021.
- 434 13. Plummer M. Improved estimates of floating absolute risk. *Stat Med*. 2004;23(1):93-  
435 104. doi:10.1002/sim.1485
- 436 14. Doll R, Peto R, Boreham J, Sutherland I. Mortality in relation to smoking: 50 years'  
437 observations on male British doctors. *BMJ*. 2004;328(7455):1519.  
438 doi:10.1136/bmj.38142.554479.AE
- 439 15. Jha P, Ramasundarahettige C, Landsman V, et al. 21st-Century Hazards of  
440 Smoking and Benefits of Cessation in the United States. *N Engl J Med*. 2013;368(4):341-  
441 350. doi:10.1056/NEJMsa1211128
- 442 16. Al-Delaimy WK, Willett WC, Manson JE, Speizer FE, Hu FB. Smoking and Mortality  
443 Among Women With Type 2 Diabetes. *Diabetes Care*. 2001;24(12):2043-2048.  
444 doi:10.2337/diacare.24.12.2043
- 445 17. Vazquez-Benitez G, Desai JR, Xu S, et al. Preventable Major Cardiovascular  
446 Events Associated With Uncontrolled Glucose, Blood Pressure, and Lipids and Active  
447 Smoking in Adults With Diabetes With and Without Cardiovascular Disease: A  
448 Contemporary Analysis. *Diabetes Care*. 2015;38(5):905-912. doi:10.2337/dc14-1877
- 449 18. Rawshani A, Rawshani A, Franzén S, et al. Risk Factors, Mortality, and  
450 Cardiovascular Outcomes in Patients with Type 2 Diabetes. *N Engl J Med*.  
451 2018;379(7):633-644. doi:10.1056/NEJMoa1800256
- 452 19. Pan A, Wang Y, Talaei M, Hu FB. Relation of Smoking With Total Mortality and  
453 Cardiovascular Events Among Patients With Diabetes Mellitus: A Meta-Analysis and  
454 Systematic Review. *Circulation*. 2015;132(19):1795-1804.  
455 doi:10.1161/CIRCULATIONAHA.115.017926
- 456 20. Qin R, Chen T, Lou Q, Yu D. Excess risk of mortality and cardiovascular events  
457 associated with smoking among patients with diabetes: Meta-analysis of observational  
458 prospective studies. *Int J Cardiol*. 2013;167(2):342-350. doi:10.1016/j.ijcard.2011.12.100
- 459 21. Umpierrez G, Korytkowski M. Diabetic emergencies — Ketoacidosis,  
460 hyperglycaemic hyperosmolar state and hypoglycaemia. *Nat Rev Endocrinol*.  
461 2016;12(4):222-232. doi:10.1038/nrendo.2016.15
- 462 22. Dhatariya KK, Glaser NS, Codner E, Umpierrez GE. Diabetic ketoacidosis. *Nat Rev*  
463 *Dis Primer*. 2020;6(1):40. doi:10.1038/s41572-020-0165-1
- 464 23. Bae J. Differences in Cigarette Use Behaviors by Age at the Time of Diagnosis  
465 With Diabetes From Young Adulthood to Adulthood: Results From the National  
466 Longitudinal Study of Adolescent Health. *J Prev Med Pub Health*. 2013;46(5):249-260.

467 doi:10.3961/jpmph.2013.46.5.249

468 24. Stanton CA, Keith DR, Gaalema DE, et al. Trends in tobacco use among US adults  
469 with chronic health conditions: National Survey on Drug Use and Health 2005–2013. *Prev*  
470 *Med.* 2016;92:160-168. doi:10.1016/j.yjmed.2016.04.008

471 25. Alegre-Díaz J, Herrington W, López-Cervantes M, et al. Diabetes and Cause-  
472 Specific Mortality in Mexico City. *N Engl J Med.* 2016;375(20):1961-1971.  
473 doi:10.1056/NEJMoa1605368

474 26. Tonstad S, Lawrence D. Varenicline in smokers with diabetes: A pooled analysis of  
475 15 randomized, placebo-controlled studies of varenicline. *J Diabetes Investig.*  
476 2017;8(1):93-100. doi:10.1111/jdi.12543

477

3.02 (±11.19)	52.65 (±10.35)	58.62 (±12.3)	61.45 (±11.67)	52.98 (±10.94)	55.38 (±11.21)	54.62 (±10.45)
30 (33.23%)	123 (32.98%)	514 (33.08%)	1026 (35.69%)	389 (33.33%)	629 (38.17%)	383 (39.04%)
94 (7.26%)	35 (9.38%)	254 (16.34%)	410 (14.26%)	193 (16.54%)	217 (13.17%)	184 (18.76%)
85 (22.02%)	87 (23.32%)	323 (20.79%)	528 (18.37%)	272 (23.31%)	397 (24.09%)	225 (22.94%)
16 (55.33%)	211 (56.57%)	774 (49.81%)	1521 (52.9%)	608 (52.1%)	858 (52.06%)	460 (46.89%)
99 (15.38%)	40 (10.72%)	203 (13.06%)	416 (14.47%)	94 (8.05%)	176 (10.68%)	112 (11.42%)
20 (16, 29)	18 (15, 24)	–	16 (14, 20)	18 (15, 20)	17 (15, 20)	16 (14, 19)
3 (2, 5)	15 (10, 20)	–	5 (2, 20)	2 (1, 3)	4 (2, 6)	15 (10, 20)
74 (7, 10.84)	8.37 (6.82, 10.93)	8.46 (6.82, 10.48)	8.1 (6.73, 10.29)	8.83 (7, 10.75)	8.65 (6.91, 10.75)	9.01 (7, 10.84)
23 (24.96%)	112 (30.03%)	442 (28.44%)	914 (31.79%)	287 (24.59%)	435 (26.4%)	236 (24.06%)
10 (39.41%)	135 (36.19%)	626 (40.28%)	1157 (40.24%)	461 (39.5%)	639 (38.77%)	386 (39.35%)
61 (35.63%)	126 (33.78%)	486 (31.27%)	804 (27.97%)	419 (35.9%)	574 (34.83%)	359 (36.6%)
7.34 (±14.79)	72.53 (±14.97)	75.22 (±13.41)	75.38 (±13.22)	76.52 (±13.95)	74.98 (±13.21)	76.17 (±14.24)
51.85 (±6.16)	153.19 (±6.59)	162.84 (±6.85)	163.07 (±6.93)	163.44 (±7)	163.54 (±6.81)	165.42 (±7.26)
0.46 (±5.89)	30.9 (±6.17)	28.34 (±4.58)	28.32 (±4.57)	28.61 (±4.9)	28 (±4.51)	27.84 (±5.28)
1.42 (±18.33)	131.27 (±17.43)	133.75 (±17.74)	134.85 (±18.38)	131.63 (±17.33)	132.2 (±17.43)	131.46 (±17.6)
3.73 (±10.47)	83.56 (±11.16)	86.12 (±11.08)	86.11 (±11.17)	85.48 (±10.89)	85.41 (±11.15)	84.99 (±11.01)
81 (13.99%)	44 (11.8%)	195 (12.55%)	373 (12.97%)	130 (11.14%)	176 (10.68%)	114 (11.62%)
05 (46.75%)	169 (45.31%)	729 (46.91%)	1501 (52.21%)	541 (46.36%)	788 (47.82%)	453 (46.18%)
80 (6.18%)	21 (5.63%)	74 (4.76%)	115 (4%)	44 (3.77%)	63 (3.82%)	34 (3.47%)

Body mass index.

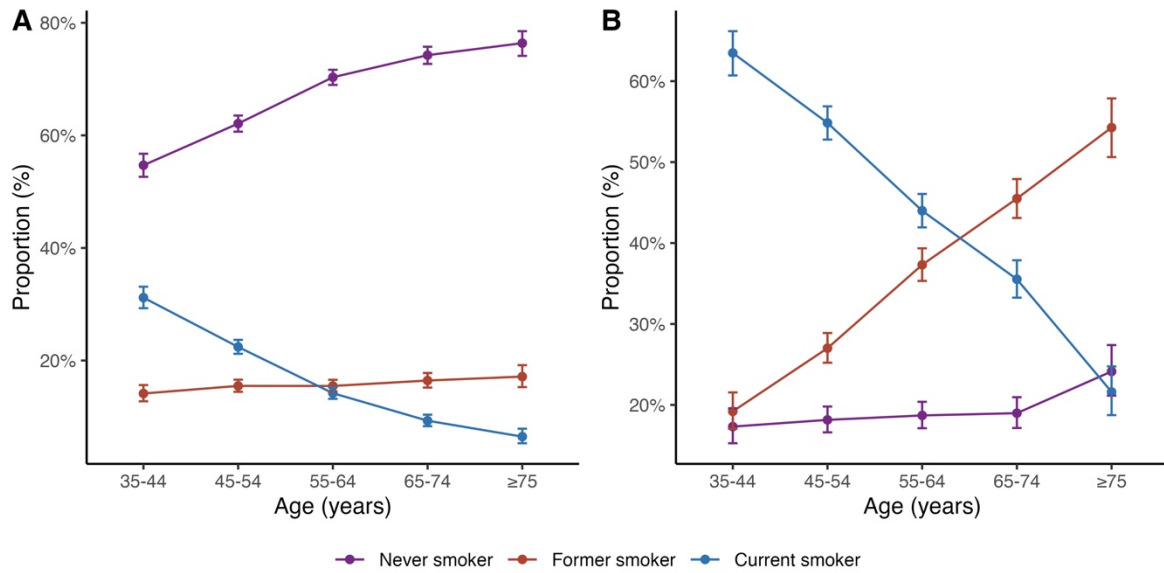
	Smoking status at baseline			Other characteristics	
Smoking status at resurvey	Never smoker (n = 666)	Former smoker (n = 239)	Current smoker (n = 341)	HbA1c level at resurvey (%)	No. of cigarettes/d at resurvey
Never smoker	622 (93.39%)	59 (24.69%)	40 (11.73%)	7.73 (6.36, 9.38)	-
Former smoker	41 (6.16%)	171 (71.55%)	204 (59.82%)	7.64 (6.45, 9.56)	3 (2, 8)
Current smoker	3 (0.45%)	9 (3.77%)	97 (28.45%)	8.19 (6.43, 9.61)	3 (2, 10)

480

481 **Table 2.** Changes in reported smoking habits from baseline to resurvey. HbA1c: Glycated

482 haemoglobin.

483 **FIGURES**



484

485 **Figure 1.** Smoking prevalence by age and sex. (A) Smoking status by age in women, (B)

486 Smoking status by age in men.

487

488

489

490

491

492

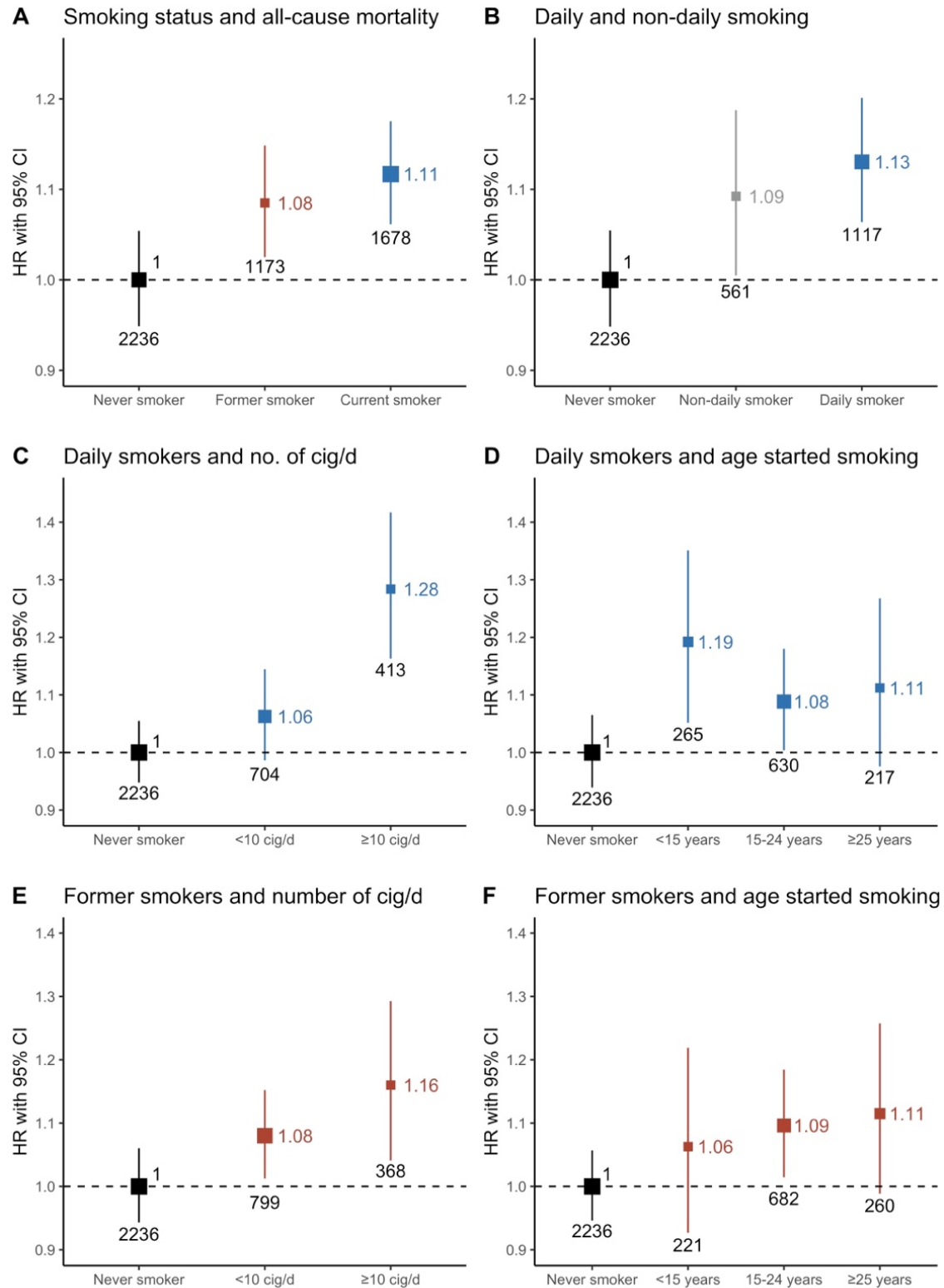
493

494

495

496





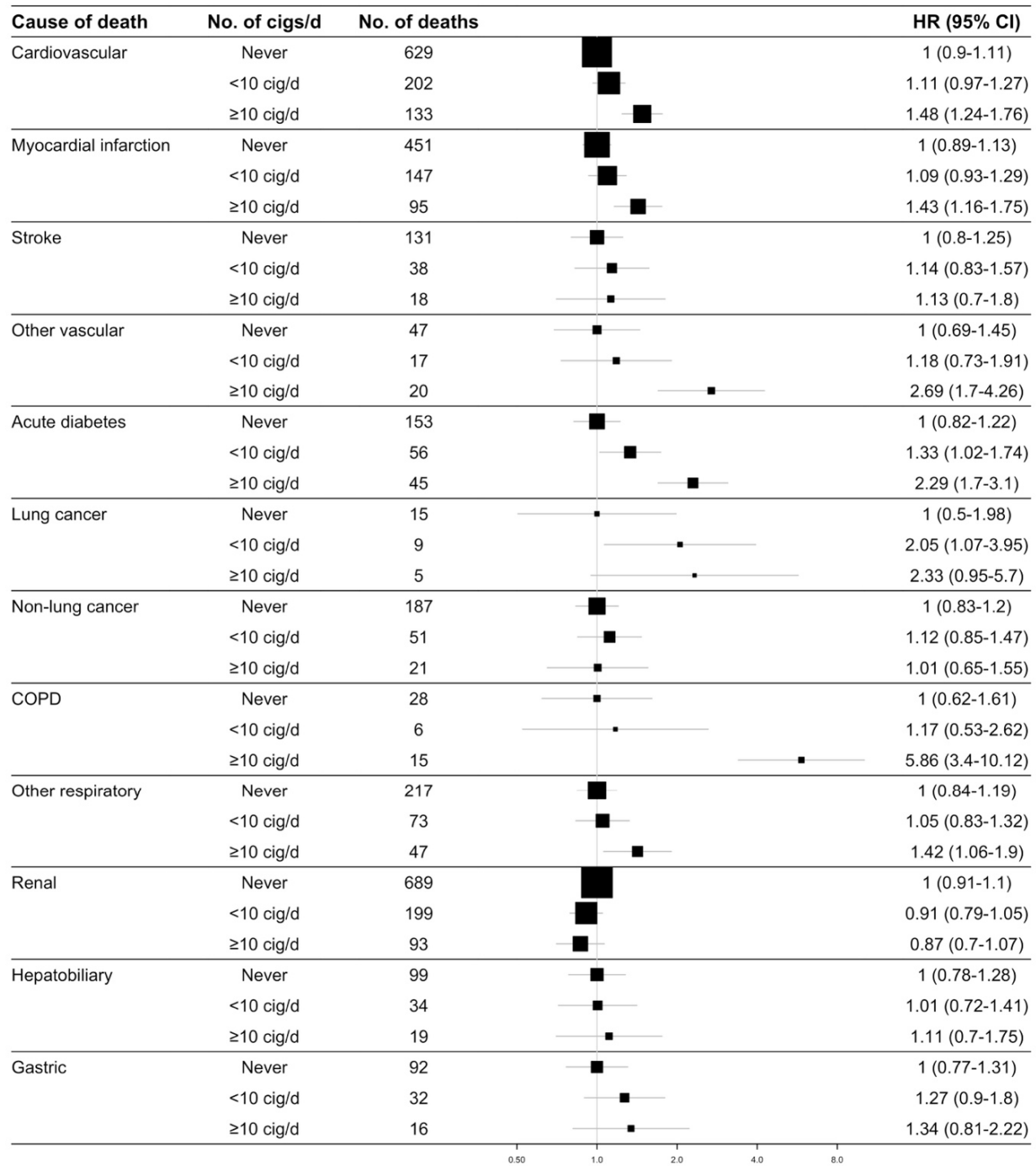
497

498 **Figure 2.** Hazard ratios for all-cause mortality by smoking status in individuals with

499 diabetes. (A) Smoking status and all-cause mortality, (B) Non-daily, daily smoking and all-

500 cause mortality in current smokers, (C) Number of cigarettes/day and all-cause mortality in  
501 daily smokers, (D) Age started smoking and all-cause mortality in daily smokers, (E)  
502 Number of cigarettes/day and all-cause mortality in former smokers, (F) Age started  
503 smoking and all-cause mortality in former smokers. All models were stratified by sex and  
504 age at risk (5-year age groups) and adjusted for place of residence (Coyoacán or  
505 Iztapalapa), educational level (elementary, high school, university, other), body mass index  
506 (BMI), HbA1c, time since diabetes diagnosis, and alcohol consumption.

507



508

509 **Figure 3.** Cause-specific mortality in individuals with diabetes according to number of  
 510 cigarettes smoked per day amongst daily smokers. COPD: Chronic obstructive pulmonary  
 511 disease. All models were stratified by sex and age at risk (5-year age groups) and adjusted

512 for place of residence (Coyoacán or Iztapalapa), educational level (elementary, high  
513 school, university, other), body mass index (BMI), HbA1c, time since diabetes diagnosis,  
514 and alcohol consumption.  
515