

# **Long- versus short-duration systemic corticosteroid regimens for acute exacerbations of COPD: A systematic review and meta-analysis of randomized trials and cohort studies.**

Zhen Zhao<sup>1\*</sup>, Owen Lou<sup>2</sup>, Yiyang Wang<sup>3</sup>, Raymond Yin<sup>1</sup>, Carrie Gong<sup>4</sup>, Florence Deng<sup>2</sup>, Ethan C Wu<sup>5</sup>, Jing Yi Xie<sup>2</sup>, Jerry Wu<sup>3</sup>, Avery Ma<sup>6</sup>, Yongzhi Guo<sup>7</sup>, Wei Ting Xiong<sup>7</sup>.

Affiliations:

<sup>1</sup> Western University

<sup>2</sup> McMaster University

<sup>3</sup> University of California, Los Angeles

<sup>4</sup> Bayview Secondary School

<sup>5</sup> Sir Winston Churchill High School

<sup>6</sup> Collège Charlemagne

<sup>7</sup> University of Toronto

\* Correspondence: [markzhao2@gmail.com](mailto:markzhao2@gmail.com)

# Abstract

While systemic corticosteroids quicken patient recovery during acute exacerbations of COPD, they also have many adverse effects. The optimal duration of corticosteroid administration remains uncertain. We performed a systematic review and meta-analysis to compare patient outcomes between short- ( $\leq 7$  day) and long- ( $> 7$  day) corticosteroid regimens in adults with acute exacerbations of COPD.

MEDLINE, EMBASE, CENTRAL, and hand searches were used to identify eight eligible RCTs and three retrospective cohort studies. Risk of bias was assessed using the Cochrane RoB 2.0 tool and ROBINS-I. Data were summarized as odds ratios (ORs) or mean differences (MDs) whenever possible and qualitatively described otherwise.

A total of 11532 participants were included, with 1296 eligible for meta-analyses. Heterogeneity was present in the methodology and settings of the studies. The OR for mortality was 0.76 (95% CI=0.40–1.44,  $n=1055$ ). The MD for hospital length-of-stay was -0.91 days (95% CI=-1.81–0.02 days,  $n=421$ ). The OR for re-exacerbations was 1.31 (95% CI=0.90–1.90,  $n=552$ ). The OR for hyperglycemia was 0.90 (95% CI=0.60–1.33,  $n=423$ ). The OR for infection incidence was 0.96 (95% CI=0.59–1.156,  $n=389$ ). The MD for one-second forced expiratory volume change was -18.40 mL (95% CI=-111.80–75.01 mL,  $n=161$ ).

The RCTs generally had low or unclear risks of bias, while the cohort studies had serious or moderate risks of bias. Our meta-analyses were affected by imprecision due to insufficient data. Some heterogeneity was present in the results, suggesting population, setting, and treatment details are potential prognostic factors. Our evidence suggests that short-duration treatments are not worse than long-duration treatments in moderate/severe exacerbations and may lead to considerably better outcomes in milder exacerbations. This supports the current GOLD guidelines for corticosteroid administration.

No funding was given for this review. Our protocol is registered in PROSPERO: CRD42023374410.

# Introduction

Chronic obstructive pulmonary disease (COPD) is characterized by persistent decreases in a patient's ability to breathe and perform gas exchange. It can present as chronic bronchitis—which involves inflammation of the airways—or emphysema—which involves tissue damage within the lungs. It is a leading cause of mortality and morbidity worldwide, causing 3.3 million deaths in 2019 primarily in lower-income countries [1]. Depending on the data source and definition, COPD was estimated to afflict from 212.3 to 384 million people worldwide in 2019, making it one of the most common illnesses in the world [1,2]. Symptoms can be relatively benign during earlier stages but can progress to hinder even simple everyday actions such as dressing oneself. COPD is generally irreversible, so treatment focuses on delaying the progression of the disease. The global societal burden of COPD was estimated to be 71.1 million disability-adjusted life years in 2019 [1]. From 2020–2050, the total global economic cost of COPD was estimated to reach \$4.3 trillion USD (2017 prices) [3]. As the global population increases and ages, the burden of COPD is bound to increase.

COPD is usually diagnosed via spirometry by measuring an individual's one-second forced expiratory volume (FEV<sub>1</sub>) and forced vital capacity (FVC). According to the GOLD (Global Initiative for Chronic Obstructive Lung Disease) guidelines, an FEV<sub>1</sub>/FVC ratio of less than 0.7 is necessary for COPD diagnosis [4]. The severity of airflow limitation is also assessed via an individual's % predicted FEV<sub>1</sub>, which is the proportion of an individual's measured FEV<sub>1</sub> compared to what would be expected from a healthy reference. Airflow severity is graded from GOLD 1 (mild) to GOLD 4 (very severe) [4].

While COPD is a chronic condition, many patients also suffer from acute exacerbations of symptoms which can last from days to weeks [5]. Respiratory infection is a major contributor to exacerbation, with others including environmental irritants such as pollutants and smoke from burning biomass [6]. While milder exacerbations can often be managed in an outpatient setting, severe exacerbations often require hospitalization. Severe exacerbations represent a major source of mortality for COPD patients, with a study by Hoogendoorn et al. reporting a 15.6% case-fatality rate [7]. Exacerbations account for about 40% of the treatment costs for COPD [8], with costs increasing with exacerbation severity [9]. Furthermore, frequent exacerbations are correlated with faster deterioration of lung function, though it is unclear if this is due to the exacerbations themselves or a third common factor [10].

For mild exacerbations, GOLD guidelines recommend treatment using only short-acting bronchodilators, whereas for moderate and severe exacerbations corticosteroid administration should also be considered [4]. Corticosteroids have anti-inflammatory properties, which are useful since COPD exacerbations are strongly associated with both local and systemic inflammation [11]. There is strong evidence that systemic corticosteroids improve patient outcomes during moderate and severe exacerbations [12,13]. However, there are many adverse effects associated with corticosteroid use, such as hyperglycemia, osteoporosis, muscle

weakening, and infection due to immunosuppression [11]. These effects are directly correlated with the dosage and duration of corticosteroid administered [11]. Thus, they are not usually recommended as maintenance therapy for stable COPD and there is interest in minimizing the amount of corticosteroid given during exacerbations while still retaining their benefits [4].

There is no strong consensus on the duration or dosage of corticosteroids that should be given to a patient during exacerbations, with studies hampered by a seemingly large degree of patient-to-patient variation in their responses to corticosteroid treatment [11]. Although guidelines from GOLD and other organizations exist, poor adherence during exacerbations remains an issue and is related to worse outcomes for patients [14,15]. A systematic review and meta-analysis conducted by Walters et al. in 2018 found that short-duration systemic corticosteroid regimens (7 days or less) are not likely to lead to worse outcomes than long-duration regimens (more than 7 days) in adult patients with COPD exacerbations [16]. However, the authors also concluded that there were not enough data to form a definitive conclusion. In this study, we revisited the comparison with additional data from a large RCT and three retrospective cohort studies which were not included in the 2018 review. These data increased our confidence that short-duration regimens are not inferior in terms of mortality, re-exacerbation, infection, hyperglycemia, hospital length-of-stay (LOS), and FEV<sub>1</sub> change. However, there was still not enough data for a conclusive verdict, and further studies would be beneficial.

## Methods

This systematic review and meta-analysis was conducted in accordance with the PRISMA 2020 guidelines and the protocol registered in PROSPERO (ID: CRD42023374410) [17]. Our completed PRISMA 2020 checklist is available in **S1 Figure**.

## Information sources and search strategy

To find studies, we systematically searched MEDLINE, EMBASE, and CENTRAL using Ovid. Medical Subject Heading terms were used to define the search strategy, which is available in **S2 Figure**. No language or date restrictions were imposed on the searches, which were conducted in September 2022. Additionally, references from similar previous systematic reviews were hand-searched in May 2023 to identify studies missed by the database search.

## Selection process

After removing duplicates, studies were imported into Covidence—a web-based screening platform by Cochrane—where they were each subjected to a round of title/abstract screening followed by a round of full-text screening [18]. In each round, two reviewers independently assessed each study, and disagreements were resolved through discussion involving a third

reviewer. Each study required unanimous approval from its reviewers to advance into the next stage.

Studies were included if they included adults (18 years or older) who were receiving corticosteroids as an acute-phase treatment for an exacerbation of COPD as defined by each individual study. Each study had to include a group who received a short-duration corticosteroid regimen ( $\leq 7$  days) and a group who received a long-duration corticosteroid regimen ( $> 7$  days). All corticosteroid types and administration methods were included, as well as studies with co-interventions such as bronchodilators and antibiotics. Studies using corticosteroids for maintenance therapy (as opposed to treatment for exacerbations) and studies including asthmatic patients were excluded. While we originally intended to also examine the differences between low and high doses of corticosteroids in our protocol, there was too much heterogeneity among the studies during the preliminary screening. Thus, our review only examined the differences between short- and long-duration regimens.

## Data extraction

Each study was randomly assigned to two reviewers who independently extracted data, with conflicts being resolved through discussion and arbitration by a third reviewer. The data extraction form was created *a priori* and included the outcomes mortality, length of hospital stay, number of re-exacerbations during follow-up, FEV<sub>1</sub> change, respiratory infection, and hyperglycemia. All data points within the follow-up period were included. Additional collected information included bibliographic information, study type (RCT or cohort), details of corticosteroid regimen, study period, country, definition of exacerbation, inclusion/exclusion criteria, co-interventions, comorbidities, time until follow-up starts, follow-up duration, and demographic data.

## Risk of bias assessment

Risk of bias assessment for each study was conducted independently and in duplicate by the same reviewers who performed the data extraction for that study. RCTs were assessed using the Cochrane RoB 2.0 tool which assessed five domains: bias due to the randomization process, deviations from intended interventions, missing outcome data, measurement of outcome, and selection of the reported result [19]. Cohort studies were assessed using the ROBINS-I tool which assessed seven domains: bias due to confounding, selection of patients into the study, classification of intervention, deviations from intended intervention, missing data, measurement of outcomes, and selection of reported results [20]. We tried to minimize the risk of publication bias by using a broad search strategy. We also intended to use funnel plots and statistical testing to assess the risk of publication bias but were unable to do so due to an insufficient number of studies.

## Data analysis

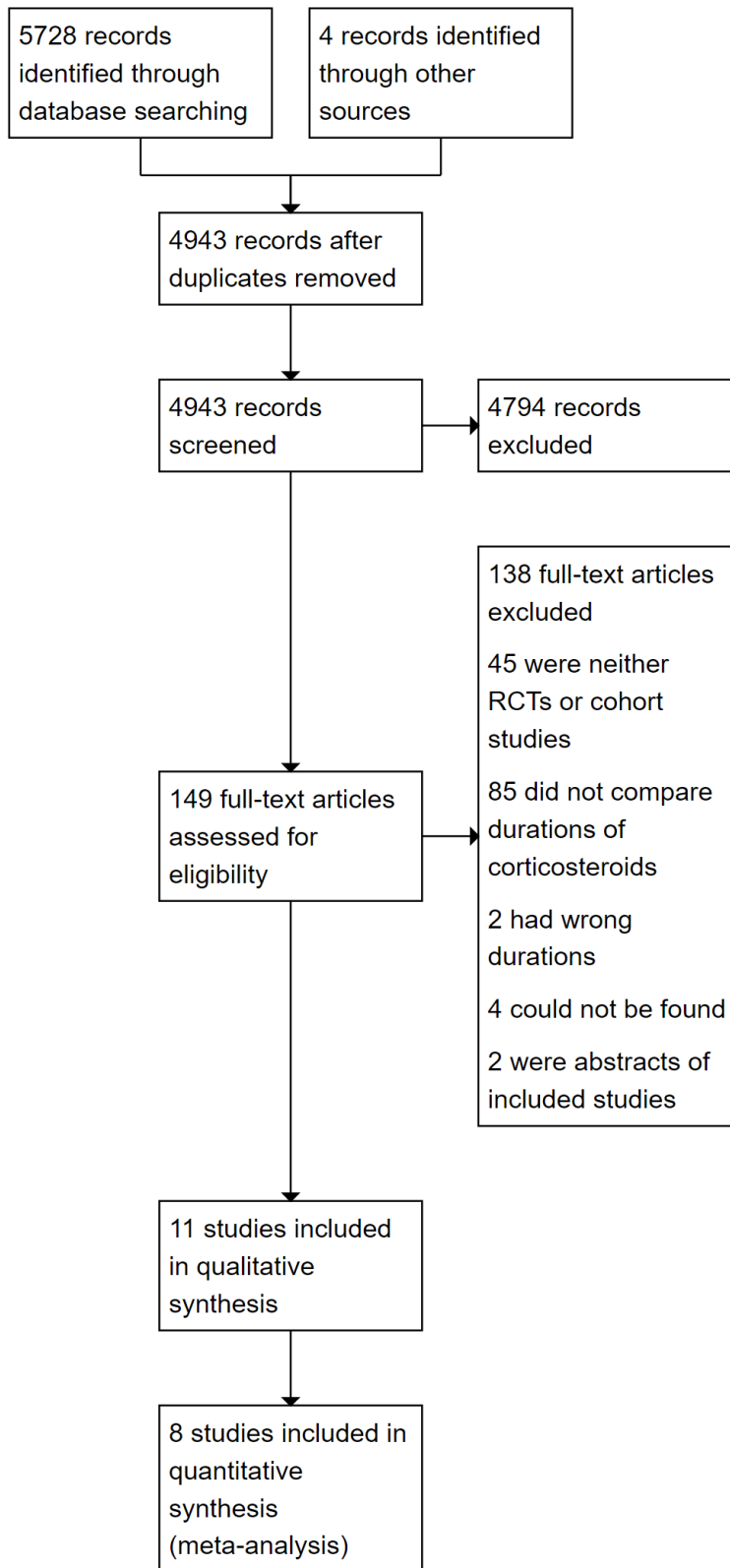
Data from studies were compiled into meta-analyses and visualized where possible using the RevMan Web application (version 5.8.0) from Cochrane [21]. Mantel-Haenszel odds ratios (ORs) were used for the number of re-exacerbation, hyperglycemia, and infection events during follow-up, while Peto ORs were used for mortality due to the rarity of events. Mean differences (MDs) were used for hospital length-of-stay and FEV change. Point estimates were presented along with the 95% confidence interval (CI) and p-value for the combined data and RCT-only data for each outcome, along with cohort study-only data if it was significant. For each meta-analysis, heterogeneity was assessed using visual inspection of the forest plots as well as the  $I^2$  statistic.  $I^2$  values greater than 50% were considered significantly heterogeneous while values greater than 75% were considered seriously heterogeneous. Fixed effects models were used for analyses, with sensitivity analyses using random effects models being conducted when significant unexplainable heterogeneity was present.

We attempted to contact study authors to obtain missing data. If needed, missing standard deviations were estimated using methods described in the Cochrane Handbook for Systematic Reviews. Certainty of evidence was assessed using the GRADE (Grading of Recommendations, Assessment, Development, and Evaluations) framework, with each outcome being graded as being of high, moderate, low, or very low certainty [22]. In accordance with guidelines, outcomes started off as “high” certainty, and the ratings were lowered by one level for a moderate degree (or two levels for a serious degree) of risk-of-bias, imprecision, inconsistency, indirectness, or publication bias. Two authors independently assessed each outcome, with any disagreements being resolved through discussion.

## Results

### Search Results

After removing duplicates, 4947 studies were identified from database and hand searches (Fig 1). Eight RCTs and three retrospective cohort studies were included in our review, with seven RCTs and two cohort studies being included in the meta-analyses. The characteristics of the studies are summarized in Table 1. Of the eight RCTs, four were only available as abstracts. We also referenced the 2018 Cochrane review by Walters et al. to fill gaps in our data [16]. There were four records in our search for which we could not find the article for, but their titles suggested none of them would have fit our inclusion criteria. Excluded studies which were similar to those we included are listed in S1 Table along with the reason for exclusion. The main results from the included studies are summarized in Table 2.



**Fig 1. PRISMA flow chart outlining the search and selection process.**

**Table 1. Summary of important characteristics of studies included in the review.**

Study ID	Definition of exacerbation	Inclusion/exclusion criteria	Interventions/ Groups	Study size	% of males	Age <sup>a</sup>
Al Mamun 2011 (RCT abstract) [23]	N/A	Inclusion: FEV <sub>1</sub> <50% predicted	30 mg/day of oral prednisolone for 7 days	N/A	Not significantly different	N/A
			30 mg/day of oral prednisolone for 14 days	N/A	Not significantly different	N/A
Alshehri 2021 (Retrospective cohort) [24]	Diagnosis based on GOLD criteria	Inclusion: Primary diagnosis of acute COPD exacerbation and hospital admission a case of COPD exacerbation, and >40 years of age	Systemic corticosteroids for ≤5 days	28	64.3%	68.3 ± 1.3
		Exclusion: History of asthma, pneumonia, prior home use of systemic corticosteroids, or unavailability of treatment plan	Systemic corticosteroids for >5 days	52	55.8%	66.2 ± 1.6
Chen 2008 (RCT) [25]	Diagnosis based on GOLD criteria	Inclusion: Coughing with phlegm for >2 years; FEV <sub>1</sub> /FVC < 70% and FEV <sub>1</sub> <80% predicted; and at least two of: increased dyspnea, sputum quantity, or sputum purulence	30 mg/day of oral prednisone for 7 days, then 7 days placebo.	41	72.7%	70 ± 8
		Exclusion: Respiratory failure, diabetes, or bronchial asthma	30 mg/day of oral prednisone for 14 days.	40	79.1%	72 ± 7
Gomaa 2008 (RCT abstract) [26]	N/A	Inclusion: FEV <sub>1</sub> <50% predicted	30 mg/day oral prednisolone for 7 days, unknown if placebo was given	Unknown (42 total)	N/A	N/A
		Exclusion: Respiratory acidosis	30 mg/day oral prednisolone for 14 days	Unknown (42 total)	N/A	N/A
Leuppi 2013 (RCT) [27]	At least 2 of the following: change in baseline dyspnea, cough, or sputum quantity, or sputum purulence	Inclusion: >40 years of age and smoking >20 pack-years.	40 mg of IV methylprednisolone on day 1, then 40 mg/day of oral prednisolone for 4 days, then 9 days placebo.	156	67.3% <sup>b</sup>	69.8 ± 11.3
		Exclusion: History of asthma, FEV <sub>1</sub> /FVC > 70%, pneumonia, estimated survival < 6 months pregnancy or lactation, or inability to give informed consent	40 mg of IV methylprednisolone on day 1, then 40 mg/day of oral prednisolone for 13 days.	155	53.5% <sup>b</sup>	69.8 ± 10.6



Poon 2017 (Retrospective cohort) [28]	N/A	Inclusion: >18 years of age and given at least 1 day of high-dose IV methylprednisolone, admitted to ICU	≥40 mg q6h but <240 mg/day IV methylprednisolone for $6.9 \pm 1.7$ days, including a $4.3 \pm 1.3$ day taper period	39	53.9%	Median/ IQR: 66 (58–79)
		Exclusion: Readmission within 6 months of previous exacerbation, corticosteroids prematurely discontinued, or death during treatment	≥40 mg q6h but <240 mg/day IV methylprednisolone for $16.5 \pm 7.1$ days, including a $13.9 \pm 6.9$ day taper period	39	41.0%	Median/ IQR: 62 (58–82)
Sayiner 2001 (RCT) [29]	N/A	Inclusion: Exacerbation leading to hospitalization, smoking history ≥20 pack-years and FEV <sub>1</sub> <35% predicted, informed consent, severe dyspnea with sleeping difficulties, and respiratory failure	0.5 mg/kg IV methylprednisolone q6h for 3 days, then placebo IV twice daily for 3 days, then placebo IV once daily for 4 days	17	94.1%	$67.4 \pm 5.8$
		Exclusion: Personal or family history of asthma, atopy, allergic disease, eosinophilia, use of systemic steroids in the preceding month, severe hypertension, uncompensated congestive heart failure, difficult-to-control diabetes mellitus, or mechanical ventilation	0.5 mg/kg IV methylprednisolone q6h for 3 days, then 0.5 mg/kg q12h for 3 days, then 0.5 mg/kg/day for 4 days	17	94.1%	$64.1 \pm 9.1$
Sirichana 2008 (RCT abstract) [30]	At least 2 of three of the following: increased dyspnea, sputum quantity, or sputum purulence for at least 24 hours	Inclusion: >40 years of age	30 mg/day prednisolone for 5 days, unknown if placebo was given	24	N/A	N/A
			30 mg/day prednisolone for 10 days	22	N/A	N/A
Sivapalan 2019 (Retrospective cohort) [31]	N/A	Inclusion: Registered in the Danish Register of COPD and received a prednisolone prescription for treatment of COPD exacerbation in an outpatient clinic in the Danish National Health Service Prescription Database	Prednisolone prescription ≤250 mg (corresponding to a 5-day regimen)	6002	49.4%	Median/ IQR: 70 (62–76)
		Exclusion: Ever had asthma diagnosis or prednisolone prescription was >2500 mg (commonly used for maintenance therapy)	Prednisolone prescription >250 mg (corresponding to a 10-day regimen)	4150	51.4%	Median/ IQR: 70 (63–77)

Wood-Baker 1997 (RCT abstract) [32]	N/A	<p>Inclusion: &gt;40 years of age, &gt;10 pack-year smoking history, and FEV<sub>1</sub> &lt; 50% of predicted value</p> <p>Exclusion: Corticosteroids for maintenance therapy, presence of lung diseases including pneumonia, previous adverse reaction to corticosteroids, peptic ulcer disease within the past 2 years, history of cardiac failure, hepatic or renal failure, or inadequately treated hypertension</p>	<p>2.5mg/kg prednisolone for 3 days followed by 11 days placebo</p> <p>0.6 mg/kg prednisolone for 7 days followed by 0.3 mg/kg for 7 days</p>	<p>27 in total (including placebo arm)</p> <p>27 in total (including placebo arm)</p>	<p>64.3% in total (including placebo arm)</p> <p>64.3% in total (including placebo arm)</p>	<p>Median/ IQR: 72 (61–86) in total (including placebo arm)</p> <p>Median/ IQR: 72 (61–86) in total (including placebo arm)</p>
Zhou 2021 (RCT) [33]	Sudden changes in clinical symptoms, including dyspnea, coughing, and sputum production	<p>Inclusion: 40–70 years of age, COPD beyond the range of daily variation, and FEV<sub>1</sub> &lt; 70% predicted</p> <p>Exclusion: Assisted respiratory muscle movement, contradictory breathing, cyanosis, need for invasive mechanical ventilation, edema, right heart failure, hemodynamic instability, changes in mental state, malignant tumours, or other serious illnesses</p>	<p>40 mg/day IV methylprednisolone for 5 days, then saline placebo for 4 days (same amount as long-duration group)</p> <p>40 mg/day IV methylprednisolone for 5 days, then 30 mg/day for 2 days, then 20 mg/day for 2 days</p>	<p>329</p> <p>310</p>	<p>53.8%</p> <p>55.5%</p>	<p>61.19 ± 5.1</p> <p>60.87 ± 4.8</p>

<sup>a</sup>Data presented as means and SDs unless otherwise specified.

<sup>b</sup>Proportion of males was significantly different (p=0.02).

**Table 2. Summary of results for each outcome**

Outcome	Sample size	Summary estimate [95% CI]	Other data not included in meta-analyses	Certainty of evidence (GRADE)
Mortality	1055	OR 0.76 [0.40–1.44], p=0.39	Sivapalan 2019: aHR 1.8 [1.5–2.2] for outpatients (p<0.0001)	Moderate (⊕⊕⊕○)
Hospital LOS	421	MD -0.91 days [-1.81– -0.02 days], p=0.05	<p>Alshehri 2021: p=0.88</p> <p>Poon 2017: 7 vs 11 days, p&lt;0.05</p>	Moderate (⊕⊕⊕○)
Re-exacerbation	552	OR 1.31 [0.90–1.90], p=0.16	Zhou 2021: p>0.05	Moderate (⊕⊕⊕○)
Hyperglycemia	423	OR 0.90 [0.60–1.33], p=0.58	Sirichana 2008: No difference in fasting plasma glucose	Moderate (⊕⊕⊕○)
Infection	389	OR 0.96 [0.59–1.56], p=0.87	Sivapalan 2019: aHR 1.2 [1.0–1.3] for pneumonia in outpatients (p=0.011)	Moderate (⊕⊕⊕○)

FEV <sub>1</sub> Change	161	MD -18.40 mL [-111.80–75.01 mL], p=0.70	<p>Leuppi 2013: No difference at discharge or 0, 6, 30, or 180 days (p=0.94)</p> <p>Zhou 2021: No difference in % of predicted FEV<sub>1</sub> after 180 days (p=0.134).</p> <p>Gomaa 2008: No difference after 7, 14, or 30 days</p> <p>Al Mamun 2011: No difference after 7 or 14 days</p>	<p>Low</p> <p>(⊕⊕○○)</p>
-------------------------	-----	---	--	--------------------------

## Risk of bias

The Cochrane Risk of Bias 2.0 tool was used to assess the RCTs in our study. Three of the RCTs available as full articles (Leuppi 2013, Sayiner 2001, and Chen 2008) were deemed to be at low risk of bias. The fourth full article, Zhou 2021, was an open-label trial and rated as having moderate risk of bias. However, we lowered its risk to “low” for mortality and re-exacerbations due to the objectivity of the outcomes; a lack of blinding would not likely have affected the outcome measurement. The four abstract-only studies did not have enough information to properly assess overall risk of bias (Table 3). One abstract, Sirichana 2008, was an open-label trial and therefore was rated as “moderate” for bias in the “deviation from intended domains” and “measurement of the outcome” domains.

The ROBINS-I tool was used to assess risk of bias for the cohort studies by comparing their designs to hypothetical, well-designed RCTs assessing the same question in the same setting (Table 4). All three studies had issues with confounding and selection as the choice of corticosteroid regimen duration could have been affected by the severity of the patient’s exacerbation. This was mitigated in Sivapalan 2019 as they specifically used data which spanned a guideline change for corticosteroid regimen duration in Denmark. This meant the choice between a shorter- and longer-duration regimen was more likely to be due to the specific guideline in effect at that time than the severity of exacerbation [31]. The studies were also rated as “moderate” for “risk of bias from selection of the reported result” as they did not report a separate protocol or statistical analysis plan. Alshehri 2021 was rated as “unknown” for “bias in deviations from the intended interventions” as it did not report data for some co-interventions and co-morbidities.

**Table 3. Risk of bias assessment of included RCTs conducted using Cochrane RoB 2.0.**

	Randomization Process	Deviations from intended interventions	Missing outcome data	Measurement of the outcome	Selection of the reported result	Overall bias
Al Mamun 2011	Unknown	Unknown	Unknown	Unknown	Unknown	Unknown
Chen 2008	Low	Low	Low	Low	Low	Low
Gomaa 2008	Unknown	Unknown	Unknown	Unknown	Unknown	Unknown
Leuppi 2013	Low	Low	Low	Low	Low	Low
Sayiner 2001	Low	Low	Low	Low	Low	Low
Sirichana 2008	Unknown	Moderate	Unknown	Moderate	Unknown	Unknown

Wood-Baker 1997	Unknown	Unknown	Unknown	Unknown	Unknown	Unknown
Zhou 2021	Low	Low	Low	Moderate	Low	Low

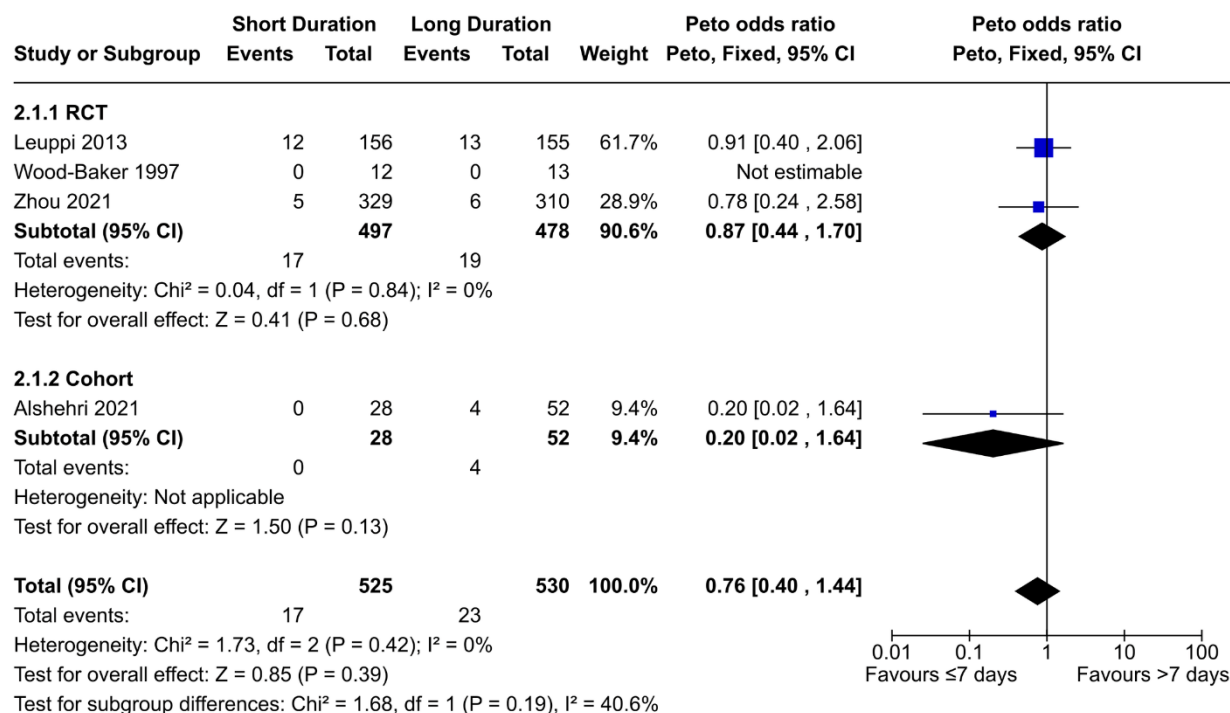
**Table 4. Risk of bias assessment of included cohort studies conducted using ROBINS-I.**

	Bias due to Confounding	Bias in selection of participants into the study	Bias in classification of interventions	Bias in deviations from the intended interventions	Bias due to missing data	Bias in measuring of outcomes	Bias in selection of the reported result	Overall bias
Alshehri 2021	Serious	Serious	Low	No Info	Low	Low	Moderate	Serious
Poon 2017	Serious	Serious	Low	Low	Low	Low	Moderate	Serious
Sivapalan 2019	Moderate	Moderate	Low	Low	Low	Low	Moderate	Moderate

## Results of syntheses

### Mortality

Three RCTs and one cohort study contributed a total of 1055 participants to the meta-analysis for mortality (Fig 2). One RCT (Wood-Baker 1997) reported zero deaths and was unable to produce an OR. The combined OR between the long- and short-duration groups was 0.76 (95% CI = 0.40–1.44,  $p=0.39$ ), while the OR with only RCT data was 0.87 (95% CI = 0.44–1.70,  $p=0.68$ ).



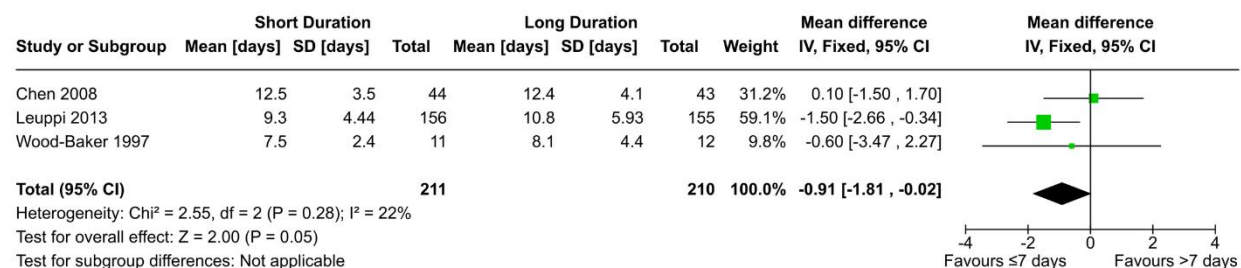
## Fig 2. Comparison of mortality risk between short- ( $\leq 7$ days) and long- ( $> 7$ days) duration regimens of corticosteroids.

In contrast, another cohort study by Sivapalan et al. found that corticosteroid regimens over 10 days resulted in higher mortality compared to those less than 10 days, with an adjusted hazard ratio of 1.8 (95% CI = 1.5–2.2) one year after treatment. Notably, this study was conducted using a Danish outpatient registry, whereas the other studies were conducted on inpatients with comparatively more severe exacerbations.

Both Leuppi 2013 and Zhou 2021 were judged to be at low risk of bias for this outcome. Alshehri 2021 had serious risk of bias, while Sivapalan 2019 had moderate risk of bias. The certainty of evidence from the RCT data was downgraded to “moderate” due to imprecision, while the certainty from cohort study data was downgraded to “very low” due to imprecision and risk of bias. Altogether, our data shows there is likely no difference in mortality between short- ( $\leq 7$  days) and long- ( $> 7$  days) duration regimens, though mortality may be lower in short-duration regimens specifically in outpatients with less-severe exacerbations.

## Hospital length-of-stay

Three RCTs contributed a total of 421 participants to the meta-analysis for hospital length-of-stay (Fig 3). One of the RCTs (Leuppi 2013) did not report SDs, instead only reporting medians, IQR, and means. We used the reported means and estimated the SDs by dividing the IQRs by 1.35. However, this method relies on the assumption that the data is normally distributed, so we performed a sensitivity analysis by excluding the study. With Leuppi 2013 included, the mean difference is marginally significant at -0.91 days (95% CI = -1.81–-0.02 days,  $p=0.05$ ). However, excluding the study causes the difference to become non-significant at -0.07 days (95% CI = -1.47–1.33 days,  $p=0.93$ ). Alternative methods of interpretation yield different results; a similar analysis conducted in a previous review by Walters et al. used the medians instead of the means and produced a non-significant result of -0.61 days (95% CI = -1.51–0.28 days,  $p=0.18$ ) [16]. Notably, the significance of the difference in length of stay was reported as  $p=0.04$  in Leuppi 2013 via the log-rank test, which is likely closer to the null than the data in our meta-analysis [27]. The true degree of significance is unknown, but we believe it is unlikely to be strongly significant.



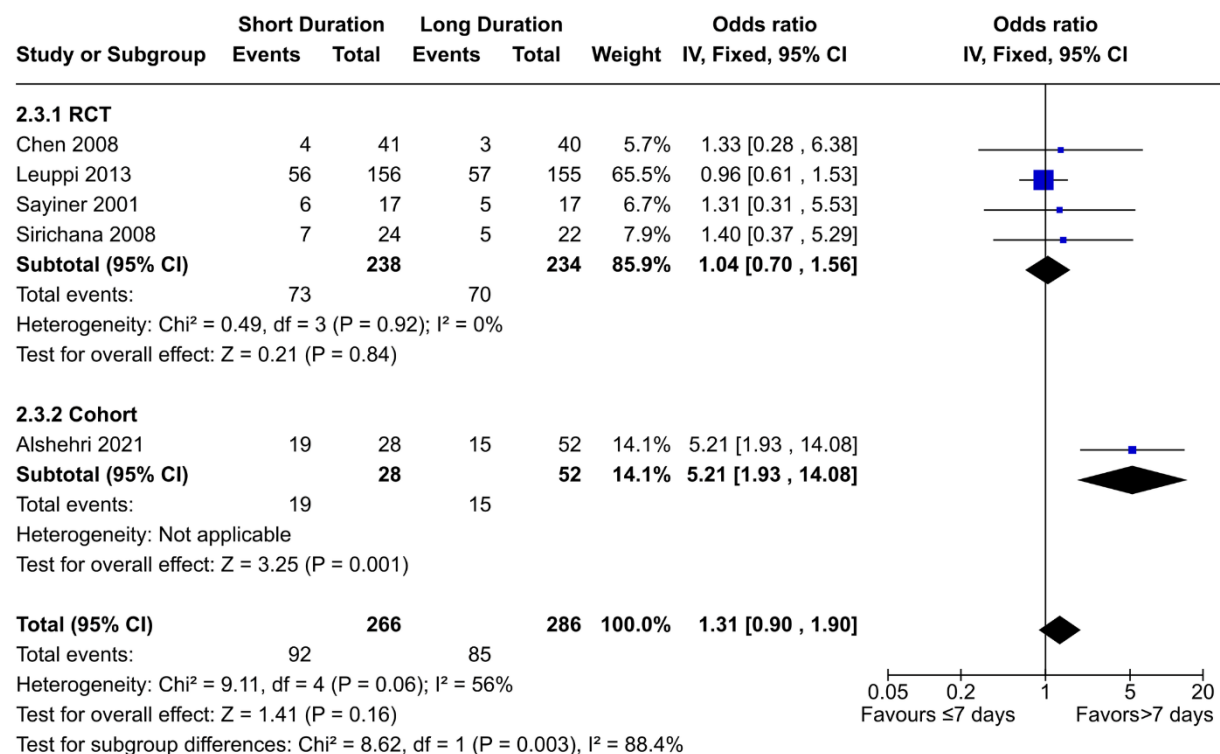
**Fig 3. Comparison of hospital length-of-stay between short- ( $\leq 7$  days) and long- ( $> 7$  days) duration regimens of corticosteroids.**

Two cohort studies were unable to be included in the meta-analysis as they did not report the required statistics. Alshehri 2021 found no significant difference ( $p=0.88$ ) between long-duration and short-duration regimens, while Poon 2017 found shorter stays in the short regimen group ( $p<0.05$ ).

Chen 2008 and Leuppi 2013 had low risk of bias, while Wood-Baker 1997 had unknown risk. Alshehri 2021 and Poon 2020 had serious risk of bias. The evidence from the RCTs was downgraded to “moderate” due to imprecision, while the evidence from the cohort studies were downgraded to “very low” due to risk of bias and imprecision. Altogether, our data shows that hospital LOS is likely to be either the same between short- ( $\leq 7$  days) and long- ( $> 7$  days) duration regimens or slightly shorter in short-term regimens.

## Number of re-exacerbations

Four RCTs and one cohort study contributed a total of 552 participants towards the meta-analysis for the number of re-exacerbations during follow-up (Fig 4). The odds ratio for all the data was 1.31 (95% CI = 0.90–1.90,  $p=0.16$ ), while the ratio for RCT data only was 1.04 (95% CI = 0.70–1.56,  $p=0.84$ ). The odds ratio for the cohort study was significant at 5.21 (95% CI = 1.93–14.08,  $p=0.001$ ). There was considerable heterogeneity in the data ( $I^2=56\%$ ) due to the cohort study. Bias notwithstanding, it is possible this difference is due to the different study population; the RCTs were conducted in Europe and east Asia, while Alshehri 2021 used data from Saudi Arabia. Alshehri et al. noted the low compliance rate for COPD maintenance therapy in the Middle East, with low compliance being linked to higher exacerbation rates [24]. However, the impact resulting from this difference in populations is unclear. Another difference is follow-up duration, with Alshehri 2021 and Sirichana 2008 using a 30-day follow-up while Leuppi 2013 and Sayiner 2001 both using 180 day follow-ups (the follow-up duration for Chen 2008 was unknown). However, data for Leuppi 2013 was non-significant at 30 days via log-rank test ( $p=0.87$ ). Sensitivity analysis excluding Alshehri 2021 and Sirichana 2008 does not produce a significant result (OR 1.01, 95% CI = 0.66–1.55,  $p=0.95$ ), and neither does changing to a random-effects model (OR 1.62, 95% CI = 0.79–3.32,  $p=0.18$ ).



**Fig 4. Comparison of re-exacerbation risk between short- ( $\leq 7$  days) and long- ( $> 7$  days) duration regimens of corticosteroids.**

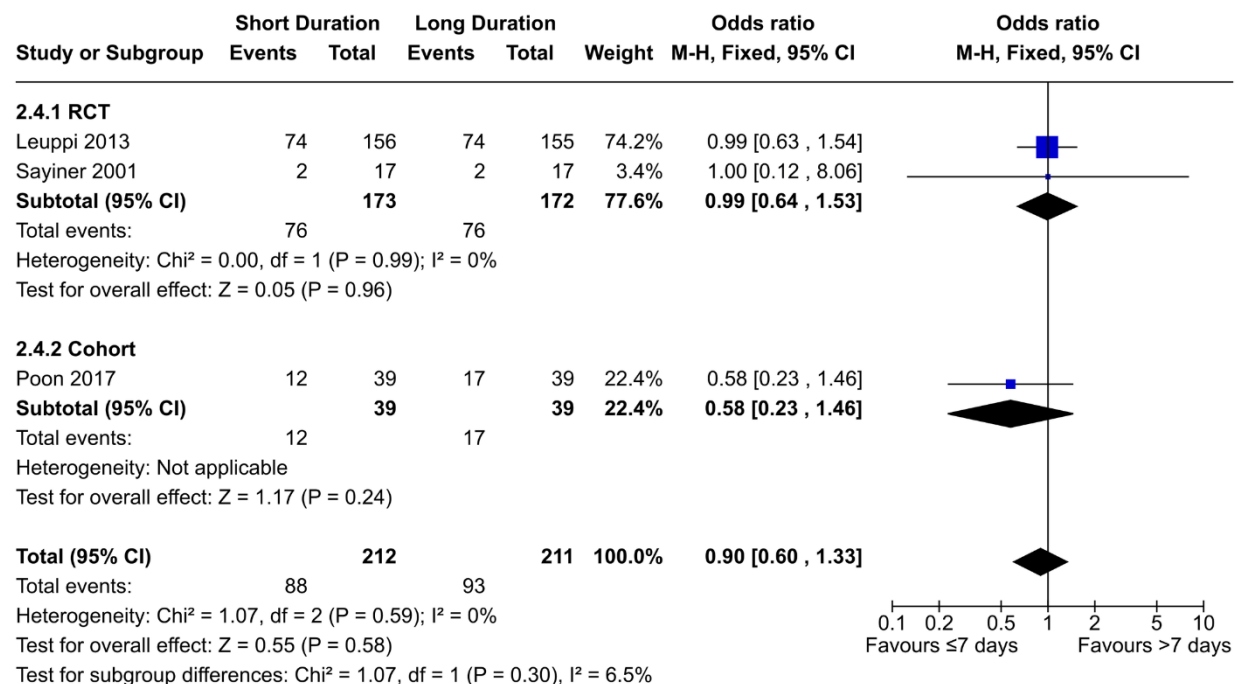


Additionally, Zhou 2021 reported frequency exacerbations as a rate, which was not significant between the two groups ( $p > 0.05$ ) after 1, 3, 6, 9, and 12 months.

Three RCTs (Chen 2008, Leuppi 2013, and Zhou 2021) were deemed to be at low risk of bias, while one (Sirichana 2008) had unknown risk of bias but was unblinded. Zhou 2021 was deemed to be at low risk despite being open-label due to the objectivity of the outcome. Alshehri 2021 had a serious risk of bias. The certainty of evidence was downgraded to “moderate” due to imprecision, while the certainty for the cohort data was downgraded to “very low” due to risk of bias and imprecision. Altogether, our data shows the number of re-exacerbations during follow-up is likely to be either the same between short- ( $\leq 7$  days) and long- ( $> 7$  days) duration regimens or slightly higher in short-duration regimens.

## Hyperglycemia

Two RCTs and one cohort study contributed a total of 423 participants to the meta-analysis for hyperglycemia (Fig 5). The OR for the combined data was 0.96 (95% CI = 0.59–1.55,  $p = 0.58$ ), while the OR for the RCTs only was 0.99 (95% CI = 0.64–1.53,  $p = 0.96$ ). Both RCTs were deemed to be at low risk of bias, while the cohort study had significant bias.



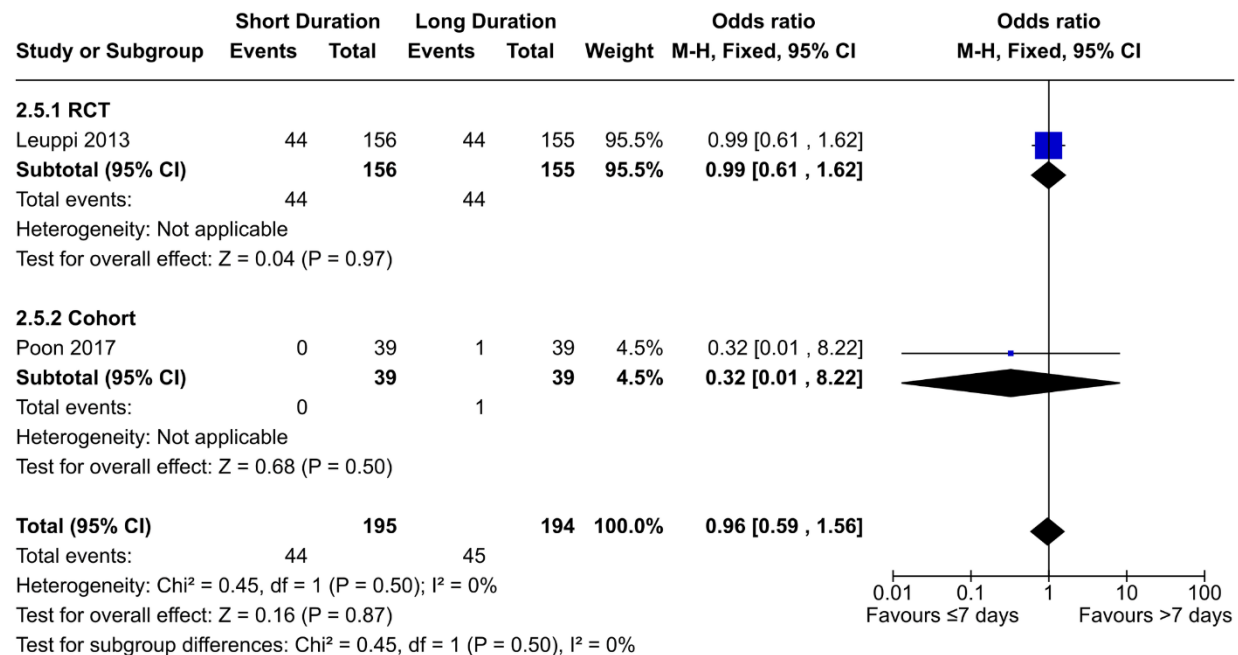
**Fig 5. Comparison of hyperglycemia risk between short- ( $\leq 7$  days) and long- ( $> 7$  days) duration regimens of corticosteroids.**

Additionally, one abstract (Sirichana 2008) noted that fasting plasma glucose was not different after 14 days, though that is only a proxy for hyperglycemia. Also, the study was unblinded and not enough information was available to assess overall risk of bias.

The certainty of evidence from the RCTs was downgraded to “moderate” due to imprecision, and the certainty from the cohort study was downgraded to “very low” due to risk of bias and imprecision. Overall, our data shows there is likely no difference in hyperglycemia incidents between short- ( $\leq 7$  days) and long- ( $> 7$  days) duration regimens.

## Infection Incidence

One RCT and one cohort study contributed 389 patients to the meta-analysis for infection incidence (Fig 6). The OR for the combined data was 0.96 (95% CI = 0.59–1.56,  $p=0.87$ ), while the OR for the RCT only was 0.99 (95% CI = 0.61–1.62,  $p=0.97$ ).



**Fig 6. Comparison of hyperglycemia risk between short- ( $\leq 7$  days) and long- ( $> 7$  days) duration regimens of corticosteroids.**

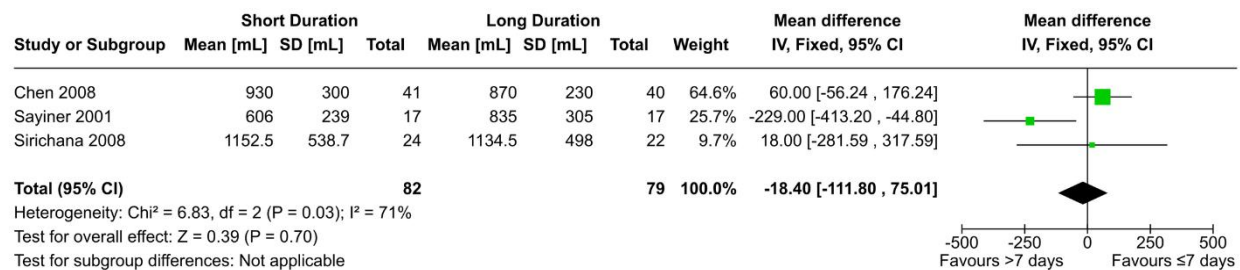
However, another cohort study (Sivapalan 2019) reported an adjusted hazard ratio of 1.2 (95% CI=1.0–1.3,  $p=0.011$ ) after 1 year, with more incidents in the long-duration group. However, this data only included pneumonia events and only included outpatients, who had comparatively less severe exacerbations.

Leuppi 2013, Sivapalan 2019, and Poon 2017 had low, moderate, and serious risk of bias, respectively. The certainty of evidence from Leuppi 2013 was rated as “moderate” due to imprecision, while the evidence from the cohort studies was rated as “very low” due to risk of bias, imprecision, and indirectness in the case of Sivapalan 2019. Our data shows there is likely to be no difference in infection risk between short- ( $\leq 7$  days) and long- ( $> 7$  days) duration regimens, but there may be less incidents in short-duration regimens specifically in outpatients with less-severe exacerbations.

## FEV<sub>1</sub> change



Three RCTs contributed 161 patients to the meta-analysis of FEV<sub>1</sub> change (Fig 7), which used the post-treatment FEV<sub>1</sub> (measured on the last day of the long-treatment regimen) as a proxy for the increase in FEV<sub>1</sub>. This choice was made to increase the number of studies that could be included in the analysis, and because the baseline pretreatment FEV<sub>1</sub> between the two groups in each study were not significant. The mean difference was -18.40 mL (95% CI = -111.80–75.01 mL,  $p=0.70$ ), but there was considerable heterogeneity in the studies ( $I^2=71\%$ ). Compared to the other two studies, data from Sayiner 2001 had a mean difference that heavily favoured long duration regimens. This may be due to the relatively short duration of treatment of 3 days for the experimental arm, while the short duration arm for Chen 2008 and Sirichana 2008 were 7 and 5 days, respectively. If this is the case, this heterogeneity may represent a form of dose-dependent relationship between corticosteroid regimen duration and FEV<sub>1</sub> change. The effect of corticosteroids on FEV<sub>1</sub> recovery seems to be most apparent in the initial 3–5 days of treatment. In that case, the short-duration group of Sayiner 2001 would have ended at the beginning of this period. Neither excluding the study nor switching to a random-effects model produced a statistically significant result (MD 54.50 mL, 95% CI = -53.87–162.88 mL,  $p=0.32$ , and MD -49.90 mL, 95% CI = -251.05–151.26 mL,  $p=0.63$ , respectively). Excluding Sirichana 2008 with or without excluding Sayiner 2001 also did not produce a significant result (MD 60 mL, 95% CI = -56.24–176.24 mL,  $p=0.66$  and MD -22.32 mL, 95% CI = -120.62–75.99 mL,  $p=0.31$ , respectively).



**Fig 7. Comparison of FEV<sub>1</sub> change between short- ( $\leq 7$  days) and long- ( $> 7$  days) duration regimens of corticosteroids.**

Leuppi 2013 found no difference in FEV<sub>1</sub> at discharge, nor at 0, 6, 30, or 180 days ( $p=0.94$ ). Gomaa 2008 also reported no significant difference in FEV<sub>1</sub> change after 7, 14, and 30 days. Al Mamun 2011 found no significant difference at days 7 and 14 ( $p=0.100$ ,  $p=0.079$ , respectively). Zhou 2021 only provided data in terms of % of predicted FEV<sub>1</sub>. Neither the % predicted baseline FEV<sub>1</sub> nor % predicted FEV<sub>1</sub> after 180 days were significant across the two groups ( $p=0.174$  and  $p=0.134$  respectively), with the mean being slightly higher in the long duration arm in both time points.

Leuppi 2013, Chen 2008, and Sayiner 2001 had low risk of bias. Sirichana 2008 and Zhou 2021 were both open-label, with the former having unknown overall risk of bias and the latter having moderate risk of bias for this outcome. Gomaa 2008 and Al Mamun 2011 had an unknown risk of bias. The certainty of evidence for this outcome was downgraded to “low” due to imprecision in the effect estimate and inconsistency from unexplained heterogeneity. Our data shows there may be no difference in FEV<sub>1</sub> change between short- ( $\leq 7$  days) and long- ( $> 7$  days) duration regimens.

## Discussion

To our knowledge, this review addresses the question of optimal corticosteroid regimen duration in COPD exacerbations using the largest dataset to date. The impetus of this study was the conclusion of the 2018 Cochrane review by Walters et al., which concluded that although 7- and 14-day regimens did not seem result in significantly different outcomes, there was a relative paucity of evidence that necessitated further research [16]. In our review, we included additional data from a large recently published RCT (Zhou 2021), three retrospective cohort studies, and qualitative data which could not be included in the meta-analyses. Overall, we believe this new data reinforces the conclusion that short-duration regimens are not worse than long-duration regimens in terms of mortality, re-exacerbation, hyperglycemia, hospital LOS, and FEV<sub>1</sub> change. Notably, Sivapalan 2019 was a relatively large and rigorous cohort study which specifically examined outpatient data unlike the other studies which primarily focused on hospitalized patients. It reported clinically relevant decreases in mortality and pneumonia incidents in the short-duration regimen. While it is only a single study examining two outcomes, it validates previous concerns regarding the non-generalizability of research from severe exacerbations to those with milder exacerbations [16]. This is also consistent with the GOLD guidelines, which do not recommend the use of corticosteroids in treating mild exacerbations [4]. The European Respiratory Society and American Thoracic Society tentatively suggest consideration of 14 days or fewer of oral corticosteroid use in ambulatory patients with exacerbations [34]; the findings of Sivapalan 2019 suggest that duration should be decreased even further.

## Limitations of our study

Although we were able to include more studies compared to past reviews, our analyses still suffered from a relative lack of data. Of the 11 studies we included in our review, only 4 of them were full-article RCTs, and only 2 of those RCTs had more than 100 participants. This issue manifested as wider CIs in the summary estimates, which resulted in us downgrading the certainty of every outcome due to imprecision since we felt that the clinical decisions would be different at either end of the CI. Additionally, we were hesitant to give much weight to the cohort studies during our interpretation of the results due to their small size and inherent risk of bias [35]. The low number of studies also meant we were unable to perform subgroup analysis, so the effects of prognostic factors such as blood eosinophil count were unable to be assessed [36]. There was heterogeneity in the specifics of the corticosteroid regimens used in each study in terms of corticosteroid type, administration methods, treatment duration/dosage, and the presence of a taper. For example, while Wood-Baker 1997 compared 3- and 14-day regimens, the cumulative dosages were much more similar at 7.5 mg/kg and 6.3 mg/kg respectively [32]. There was also heterogeneity in the settings of each study. For example, Alshehri 2021 was conducted in Saudi Arabia and reported significantly more re-exacerbations in the short-duration group, contrary to other studies [24]. The authors cited differences in treatment adherence as a possible explanation; another study found that patients in Saudi Arabia had lower adherence to COPD maintenance treatment compared to those in Turkey—where Sayiner 2001 was conducted [37]. Poor adherence to guidelines during exacerbations remains an issue and is related to worse outcomes for patients [14,15]. This reiterates the concern that data from our included studies may not be generalizable to all populations. Relatedly, our sole study that specifically assessed outpatients raises questions about the generalizability of our results in

outpatients, which represent over 80% of all exacerbations [4]. RECUT—a currently ongoing RCT which specifically recruits outpatients—will hopefully shed more light on this issue [38].

While we adhered to the PRISMA guidelines and other best practices whenever possible, some limitations exist in the methods we used. We were unable to statistically or graphically check for publication bias due to an inadequate number of studies. Such tests generally require at least 10 studies to be sufficiently powered [39], while the most studies we had in an outcome was five. None of the full articles reported conflicts of interests arising from funding or other sources (abstracts were unable to be assessed) or were designed/reported in an obviously intentionally biased way. We do not believe considerable publication bias was present, but we cannot be certain. Another limitation is that we did not report on all outcomes that were relevant to the topic. We decided on our outcomes *a priori* to minimize our ability to perform selective reporting. Some outcomes we did not address were mean time to re-exacerbation, treatment failure, quality of life, other spirometric parameters such as FVC, and other adverse effects. A past review by Walters et al. did not find any significant difference in any of those outcomes [16], although notably, Zhou 2021 found a significant decrease in the mean time to next exacerbation in the short-duration cohort [33].

## Implications for the future

The certainties of evidence for each outcome were all either “moderate” or “low” for RCT data, and “very low” for cohort study data. While short-duration regimens are unlikely to be worse than long-duration regimens in general, we cannot fully preclude the possibility of inferiority for all individual outcomes, especially re-exacerbation rate. Additional research is needed, with data on hospital LOS, re-exacerbation, and FEV<sub>1</sub> change being the most likely to change the summary estimate in a clinically relevant way. Additionally, preliminary data suggests short-duration regimens may be considerably preferable to long-duration regimens for patients with milder exacerbations, but further data from RCTs are needed to confirm this. Overall, our findings support the recommendations of GOLD that systemic corticosteroids are given for 5–7 days for moderate to severe COPD exacerbations [4].

## Acknowledgements

We would like to thank Winston Hou for providing guidance throughout this study.

## Acknowledgements

We would like to thank Winston Hou for providing guidance throughout this study.

## Funding and conflicts of interest

The author(s) received no specific funding for this work. The authors have declared that no competing interests exist.

## Data availability statement

All relevant data are within the manuscript and its Supporting Information files.

## References

1. Safiri S, Carson-Chahhoud K, Noori M, Nejadghaderi SA, Sullman MJM, Ahmadian Heris J, et al. Burden of chronic obstructive pulmonary disease and its attributable risk factors in 204 countries and territories, 1990-2019: results from the Global Burden of Disease Study 2019. *BMJ*. 2022;378. doi:10.1136/bmj-2021-069679
2. Alabi FO, Alkhateeb HA, DeBarros KM, Barletti Benel PS, Sanchez-Martinez RL, Zeper ML, et al. The Heterogeneity of COPD Patients in a Community-Based Practice and the Inadequacy of the Global Initiative for Chronic Obstructive Lung Disease Criteria: A Real-World Experience. *Chronic Obstr Pulm Dis*. 2021;8: 396–407. doi:http://doi.org/10.15326/jcopdf.2021.0229
3. Chen S, Kuhn M, Prettner K, Yu F, Yang T, Bärnighausen T, et al. The global economic burden of chronic obstructive pulmonary disease for 204 countries and territories in 2020–50: a health-augmented macroeconomic modelling study. *Lancet Glob Health*. 2023;11: e1183–e1193. doi:10.1016/S2214-109X(23)00217-6
4. Global Initiative for Chronic Obstructive Lung Disease. Global Strategy for the Diagnosis, Management, and Prevention of Chronic Obstructive Pulmonary Disease: 2023 Report. 2023 p. 141. Available: <https://goldcopd.org/2023-gold-report-2/>
5. Husebø G, Bakke P, Aanerud M, Hardie J, Grønseth R, Eagan T. How long does a COPD exacerbation last? – Predictors for duration more than 3 weeks. *Eur Respir J*. 2014;44: P1072.
6. Ko FW, Chan KP, Hui DS, Goddard JR, Shaw JG, Reid DW, et al. Acute exacerbation of COPD. *Respirology*. 2016;21: 1152–1165. doi:10.1111/resp.12780
7. Hoogendoorn M, Hoogenveen RT, Mölken MPR, Vestbo J, Feenstra TL. Case fatality of COPD exacerbations: a meta-analysis and statistical modelling approach. *Eur Respir J*. 2011;37: 508. doi:10.1183/09031936.00043710
8. May SM, Li JTC. Burden of chronic obstructive pulmonary disease: Healthcare costs and beyond. *Allergy Asthma Proc*. 2015;36: 4–10. doi:10.2500/aap.2015.36.3812

9. Dalal AA, Shah M, D'Souza AO, Rane P. Costs of COPD exacerbations in the emergency department and inpatient setting. *Respir Med.* 2011;105: 454–460. doi:<https://doi.org/10.1016/j.rmed.2010.09.003>
10. Donaldson G, Seemungal T, Bhowmik A, Wedzicha J. Relationship between exacerbation frequency and lung function decline in chronic obstructive pulmonary disease. *Thorax.* 2002;57: 847. doi:10.1136/thorax.57.10.847
11. Falk JA, Minai OA, Mosenifar Z. Inhaled and Systemic Corticosteroids in Chronic Obstructive Pulmonary Disease. *Proc Am Thorac Soc.* 2008;5: 506–512. doi:10.1513/pats.200707-096ET
12. Singh JM, Palda VA, Stanbrook MB, Chapman KR. Corticosteroid Therapy for Patients With Acute Exacerbations of Chronic Obstructive Pulmonary Disease: A Systematic Review. *Arch Intern Med.* 2002;162: 2527–2536. doi:10.1001/archinte.162.22.2527
13. Walters J, Tan D, White C, Gibson P, Wood-Baker R, Walters E. Systemic corticosteroids for acute exacerbations of chronic obstructive pulmonary disease. *Cochrane Database Syst Rev.* 2014. doi:10.1002/14651858.CD001288.pub4
14. Seys D, Bruyneel L, Decramer M, Lodewijckx C, Panella M, Sermeus W, et al. An International Study of Adherence to Guidelines for Patients Hospitalised with a COPD Exacerbation. *COPD J Chronic Obstr Pulm Dis.* 2017;14: 156–163. doi:10.1080/15412555.2016.1257599
15. George J, Ganoff M, Lipari M. Corticosteroid Exposure in the Treatment of Severe COPD Exacerbations. *J Pharm Pract.* 2022;35: 101–105. doi:10.1177/0897190020961226
16. Walters J, Tan D, White C, Wood-Baker R. Different durations of corticosteroid therapy for exacerbations of chronic obstructive pulmonary disease. *Cochrane Database Syst Rev.* 2018. doi:10.1002/14651858.CD006897.pub4
17. Page MJ, McKenzie JE, Bossuyt PM, Boutron I, Hoffmann TC, Mulrow CD, et al. The PRISMA 2020 statement: an updated guideline for reporting systematic reviews. *BMJ.* 2021;372. doi:10.1136/bmj.n71
18. Veritas Health Innovation. Covidence systematic review software. Melbourne, Australia; 2022. Available: [www.covidence.org](http://www.covidence.org)
19. Sterne JAC, Savović J, Page MJ, Elbers RG, Blencowe NS, Boutron I, et al. RoB 2: a revised tool for assessing risk of bias in randomised trials. *BMJ.* 2019;366. doi:10.1136/bmj.l4898
20. Sterne JA, Hernán MA, Reeves BC, Savović J, Berkman ND, Viswanathan M, et al. ROBINS-I: a tool for assessing risk of bias in non-randomised studies of interventions. *BMJ.* 2016;355. doi:10.1136/bmj.i4919
21. The Cochrane Collaboration. Review Manager Web (RevMan Web). 2023. Available: [revman.cochrane.org](http://revman.cochrane.org)

22. Schünemann H, Brożek J, Guyatt G, Oxman A. Handbook for grading the quality of evidence and the strength of recommendations using the GRADE approach (updated October 2013). GRADE Working Group; 2013. Available: <https://gdt.gradepro.org/app/handbook/handbook.html>
23. Al Mamun S, Rahman S. P258 Role of 7-day and 14-day courses of oral prednisolone treatment in acute exacerbation of COPD [abstract]. *Thorax*. 2011;66: A172. doi:10.1136/thoraxjnl-2011-201054c.258
24. Alshehri S, Alalawi M, Makeen A, Jad A, Alhuwaysi A, Alageeli M, et al. Short-Term Versus Long-Term Systemic Corticosteroid Use in the Acute Exacerbation of Chronic Obstructive Pulmonary Disease Patients. *Malays J Med Sci MJMS*. 2021;28: 59–65. doi:10.21315/mjms2021.28.1.8
25. Chen G, Xie C-M, Luo Y-F. [The effects and therapeutic duration of oral corticosteroids in patients with acute exacerbation of chronic obstructive pulmonary diseases]. *Zhonghua Jie He He Hu Xi Za Zhi Zhonghua Jiehe He Huxi Zazhi Chin J Tuberc Respir Dis*. 2008;31: 577–580.
26. Gomaa M, Faramawy M, Ibrahim H. Duration of systemic corticosteroids treatment in COPD exacerbations [abstract]. *Eur Respir J*. 2008;32: 3601.
27. Leuppi JD, Schuetz P, Bingisser R, Bodmer M, Briel M, Drescher T, et al. Short-term vs Conventional Glucocorticoid Therapy in Acute Exacerbations of Chronic Obstructive Pulmonary Disease: The REDUCE Randomized Clinical Trial. *JAMA*. 2013;309: 2223–2231. doi:10.1001/jama.2013.5023
28. Poon T, Paris DG, Aitken SL, Patrawalla P, Bondarsky E, Altshuler J. Extended Versus Short-Course Corticosteroid Taper Regimens in the Management of Chronic Obstructive Pulmonary Disease Exacerbations in Critically Ill Patients. *J Intensive Care Med*. 2020;35: 257–263. doi:10.1177/0885066617741470
29. Sayiner A, Aytemur ZA, Cirit M, Ünsal İ. Systemic Glucocorticoids in Severe Exacerbations of COPD. *CHEST*. 2001;119: 726–730. doi:10.1378/chest.119.3.726
30. Sirichana W, Sittipunt C, Kamon K, Wongtim S, Udompanich V. Comparison between 5 Days and 10 Days of Prednisolone in Treatment of Acute Exacerbation of Chronic Obstructive Pulmonary Disease [abstract]. *Respirology*. 2008;13: A101–A138.
31. Sivapalan P, Ingebrigtsen TS, Rasmussen DB, Sørensen R, Rasmussen CM, Camilla Bjørn Jensen, et al. COPD exacerbations: the impact of long versus short courses of oral corticosteroids on mortality and pneumonia: nationwide data on 67 000 patients with COPD followed for 12 months. *BMJ Open Respir Res*. 2019;6: e000407. doi:10.1136/bmjresp-2019-000407
32. Wood-Baker R, Wilkinson J, Pearce M, Ryan G. A double-blind, randomised, placebo-controlled trial of corticosteroids for acute exacerbations of chronic obstructive pulmonary disease [abstract]. *Aust N Z J Med*. 1997;28. Available: <https://onlinelibrary.wiley.com/doi/10.1111/j.1445-5994.1998.tb02984.x>
33. Zhou L, Fang Y, Liu W, Zhang J, Wang Y, Xie S, et al. Comparison of Immediate and Sequential Withdrawal of a Systemic Glucocorticoid in the Treatment of Acute Exacerbations of Chronic Obstructive Pulmonary Disease: A Multicenter, Randomized, Double-Blind, Parallel-Controlled,



Open-Label Study. *Front Mol Biosci.* 2021;8. Available:  
<https://www.frontiersin.org/articles/10.3389/fmolb.2021.639079>

34. Wedzicha JA (ERS co-chair), Miravittles M, Hurst JR, Calverley PMA, Albert RK, Antonio Anzueto, et al. Management of COPD exacerbations: a European Respiratory Society/American Thoracic Society guideline. *Eur Respir J.* 2017;49: 1600791. doi:10.1183/13993003.00791-2016
35. Guyatt GH, Oxman AD, Vist G, Kunz R, Brozek J, Alonso-Coello P, et al. GRADE guidelines: 4. Rating the quality of evidence—study limitations (risk of bias). *J Clin Epidemiol.* 2011;64: 407–415. doi:10.1016/j.jclinepi.2010.07.017
36. Li J, Liang L, Feng L, Cao S, Cai YS, Li X, et al. The Prognostic Value of Blood Eosinophil Level in AECOPD is Influenced by Corticosteroid Treatment During Hospitalization. *J Inflamm Res.* 2023;16: 3233–3243. doi:10.2147/JIR.S421605
37. Kopturk N, Polatli M, Oguzulgen IK, Saleemi S, Al Ghobain M, Khan J, et al. Adherence to COPD treatment in Turkey and Saudi Arabia: results of the ADCARE study. *Int J Chron Obstruct Pulmon Dis.* 2018;13: 1377–1388.
38. Urwyler P, Boesing M, Abig K, Cattaneo M, Dieterle T, Zeller A, et al. Reduction of corticosteroid use in outpatient treatment of exacerbated COPD - Study protocol for a randomized, double-blind, non-inferiority study, (The RECUT-trial). *Trials.* 2019;20: 727. doi:10.1186/s13063-019-3856-8
39. Sterne JAC, Sutton AJ, Ioannidis JPA, Terrin N, Jones DR, Lau J, et al. Recommendations for examining and interpreting funnel plot asymmetry in meta-analyses of randomised controlled trials. *BMJ.* 2011;343: d4002. doi:10.1136/bmj.d4002

# Supporting information



## PRISMA 2020 Checklist

Section and Topic	Item #	Checklist item	Location where item is reported
<b>TITLE</b>			
Title	1	Identify the report as a systematic review.	Page 1
<b>ABSTRACT</b>			
Abstract	2	See the PRISMA 2020 for Abstracts checklist.	Page 2
<b>INTRODUCTION</b>			
Rationale	3	Describe the rationale for the review in the context of existing knowledge.	Pages 3–4
Objectives	4	Provide an explicit statement of the objective(s) or question(s) the review addresses.	Page 4
<b>METHODS</b>			
Eligibility criteria	5	Specify the inclusion and exclusion criteria for the review and how studies were grouped for the syntheses.	Page 5
Information sources	6	Specify all databases, registers, websites, organisations, reference lists and other sources searched or consulted to identify studies. Specify the date when each source was last searched or consulted.	Pages 4–5
Search strategy	7	Present the full search strategies for all databases, registers and websites, including any filters and limits used.	S2 Figure
Selection process	8	Specify the methods used to decide whether a study met the inclusion criteria of the review, including how many reviewers screened each record and each report retrieved, whether they worked independently, and if applicable, details of automation tools used in the process.	Page 5
Data collection process	9	Specify the methods used to collect data from reports, including how many reviewers collected data from each report, whether they worked independently, any processes for obtaining or confirming data from study investigators, and if applicable, details of automation tools used in the process.	Page 5
Data items	10a	List and define all outcomes for which data were sought. Specify whether all results that were compatible with each outcome domain in each study were sought (e.g. for all measures, time points, analyses), and if not, the methods used to decide which results to collect.	Page 5
	10b	List and define all other variables for which data were sought (e.g. participant and intervention characteristics, funding sources). Describe any assumptions made about any missing or unclear information.	Page 5
Study risk of bias assessment	11	Specify the methods used to assess risk of bias in the included studies, including details of the tool(s) used, how many reviewers assessed each study and whether they worked independently, and if applicable, details of automation tools used in the process.	Page 5
Effect measures	12	Specify for each outcome the effect measure(s) (e.g. risk ratio, mean difference) used in the synthesis or presentation of results.	Page 6
Synthesis methods	13a	Describe the processes used to decide which studies were eligible for each synthesis (e.g. tabulating the study intervention characteristics and comparing against the planned groups for each synthesis (item #5)).	Pages 5–6
	13b	Describe any methods required to prepare the data for presentation or synthesis, such as handling of missing summary statistics, or data conversions.	Page 6
	13c	Describe any methods used to tabulate or visually display results of individual studies and syntheses.	Page 6
	13d	Describe any methods used to synthesize results and provide a rationale for the choice(s). If meta-analysis was performed, describe the model(s), method(s) to identify the presence and extent of statistical heterogeneity, and software package(s) used.	Page 6
	13e	Describe any methods used to explore possible causes of heterogeneity among study results (e.g. subgroup analysis, meta-regression).	Page 6
	13f	Describe any sensitivity analyses conducted to assess robustness of the synthesized results.	Page 6
Reporting bias assessment	14	Describe any methods used to assess risk of bias due to missing results in a synthesis (arising from reporting biases).	Page 5
Certainty assessment	15	Describe any methods used to assess certainty (or confidence) in the body of evidence for an outcome.	Page 6



It is made available under a [CC-BY 4.0 International license](#).



## PRISMA 2020 Checklist

Section and Topic	Item #	Checklist item	Location where item is reported
<b>RESULTS</b>			
Study selection	16a	Describe the results of the search and selection process, from the number of records identified in the search to the number of studies included in the review, ideally using a flow diagram.	Page 6, Fig 1
	16b	Cite studies that might appear to meet the inclusion criteria, but which were excluded, and explain why they were excluded.	S1 Table
Study characteristics	17	Cite each included study and present its characteristics.	Table 1
Risk of bias in studies	18	Present assessments of risk of bias for each included study.	Page 11, Tables 2–3
Results of individual studies	19	For all outcomes, present, for each study: (a) summary statistics for each group (where appropriate) and (b) an effect estimate and its precision (e.g. confidence/credible interval), ideally using structured tables or plots.	Figs 2–7
Results of syntheses	20a	For each synthesis, briefly summarise the characteristics and risk of bias among contributing studies.	Pages 12–17
	20b	Present results of all statistical syntheses conducted. If meta-analysis was done, present for each the summary estimate and its precision (e.g. confidence/credible interval) and measures of statistical heterogeneity. If comparing groups, describe the direction of the effect.	Pages 12–17
	20c	Present results of all investigations of possible causes of heterogeneity among study results.	Pages 12–17
	20d	Present results of all sensitivity analyses conducted to assess the robustness of the synthesized results.	Pages 12–17
Reporting biases	21	Present assessments of risk of bias due to missing results (arising from reporting biases) for each synthesis assessed.	Pages 12–17
Certainty of evidence	22	Present assessments of certainty (or confidence) in the body of evidence for each outcome assessed.	Pages 12–17
<b>DISCUSSION</b>			
Discussion	23a	Provide a general interpretation of the results in the context of other evidence.	Page 18
	23b	Discuss any limitations of the evidence included in the review.	Pages 18–19
	23c	Discuss any limitations of the review processes used.	Page 19
	23d	Discuss implications of the results for practice, policy, and future research.	Page 19
<b>OTHER INFORMATION</b>			
Registration and protocol	24a	Provide registration information for the review, including register name and registration number, or state that the review was not registered.	Page 2
	24b	Indicate where the review protocol can be accessed, or state that a protocol was not prepared.	Page 2
	24c	Describe and explain any amendments to information provided at registration or in the protocol.	Page 5
Support	25	Describe sources of financial or non-financial support for the review, and the role of the funders or sponsors in the review.	Page 20
Competing interests	26	Declare any competing interests of review authors.	Page 20
Availability of data, code and	27	Report which of the following are publicly available and where they can be found: template data collection forms; data extracted from included studies; data used for all analyses; analytic code; any other materials used in the review.	Page 20



## PRISMA 2020 Checklist

Section and Topic	Item #	Checklist item	Location where item is reported
other materials			

From: Page MJ, McKenzie JE, Bossuyt PM, Boutron I, Hoffmann TC, Mulrow CD, et al. The PRISMA 2020 statement: an updated guideline for reporting systematic reviews. *BMJ* 2021;372:n71. doi: 10.1136/bmj.n71

For more information, visit: <http://www.prisma-statement.org/>

## S1 Figure. Completed PRISMA 2020 Checklist

# MEDLINE search strategy example:

1. exp Pulmonary Disease, Chronic Obstructive/
2. COPD.mp.
3. chronic obstructive pulmonary disease.mp.
4. exp Bronchitis, Chronic/
5. chronic bronchitis.mp.
6. exp Emphysema/
7. emphysema.mp.
8. 1 or 2 or 3 or 4 or 5 or 6 or 7
9. exp Steroids/
10. steroid\*.mp.
11. exp Adrenal Cortex Hormones/
12. corticosteroid.mp.
13. exp Glucocorticoids/
14. glucocorticoid\*.mp.
15. exp Beclomethasone/
16. beclomethasone.mp.
17. exp Betamethasone/
18. betamethasone.mp.
19. exp Fluticasone/
20. fluticasone.mp.
21. exp Cortisone/
22. cortisone.mp.
23. exp Dexamethasone/
24. dexamethasone.mp.
25. exp Hydrocortisone/
26. hydrocortisone.mp.
27. exp Prednisolone/
28. prednisolone.mp.
29. exp Prednisone/
30. prednisone.mp.
31. exp Methylprednisolone/
32. methylprednisolone.mp.
33. methylprednisone.mp.
34. exp Triamcinolone/
35. triamcinolone.mp.
36. 9 or 10 or 11 or 12 or 13 or 14 or 15 or 16 or 17 or 18 or 19 or 20 or 21 or 22 or 23 or 24 or 25 or 26 or 27 or 28 or 29 or 30 or 31 or 32 or 33 or 34 or 35
37. exp Disease Progression/

- 38. exacerb\*.mp.
- 39. attack\*.mp.
- 40. 37 or 38 or 39
- 41. 8 and 40
- 42. 36 and 41

## S2 Figure. MEDLINE search strategy example.

**S1 Table. List of excluded studies and reasons for exclusion.**

Study Name	Reason for exclusion
<a href="#">Abroug 2014</a>	Compared prednisone with placebo
<a href="#">Burge 2003</a>	Investigated the effect of prednisolone on subsequent treatment with bronchodilators without any comparison of durations
<a href="#">CORTICO-COP</a>	Comparison between normal therapy and eosinophil-guided therapy
<a href="#">Davies 1999</a>	Compared prednisolone with placebo
<a href="#">George 2020</a>	Assessed hospital adherence to treatment guidelines
<a href="#">Johannesmeyer 2021</a>	Compared corticosteroid dosage to hyperglycemia risk, but no comparison with duration
<a href="#">Karlsson 2017</a>	Investigated the effect of prednisolone on exercise tolerance in men with stable COPD
<a href="#">Long 2018</a>	A short summary of the 2018 Cochrane review
<a href="#">Ma 2021</a>	Compared inhaled vs systemic corticosteroids
<a href="#">Magovern 2019</a>	Brief summary of current knowledge regarding optimal corticosteroid regimen duration
<a href="#">Marcos 2017</a>	Assessed hospital adherence to treatment guidelines
<a href="#">Matte 2018</a>	Assessed the effect of a physician education session on adherence to recommended COPD corticosteroid treatment guidelines
<a href="#">Niewoehner 1999</a>	Wrong durations; compared 2 weeks with 8 weeks and placebo
<a href="#">RECUT</a>	Trial not complete, and wrong durations (3 vs 5 days)
<a href="#">Scheutz 2015</a>	Post-hoc analysis of Leuppi 2013 data
<a href="#">Sivapalan 2021</a>	Post-hoc analysis of two different trials
<a href="#">Willaert 2002</a>	Compared different administration methods