

Full title:

Dietary factors and hypertension risk in West Africa: A systematic review and meta-analysis of observational studies

Short title:

Dietary factors and hypertension in West Africa

Authors:

Nimisoere P. BATUBO ^a

J. Bernadette MOORE ^a

Michael A. ZULYNIAK ^a

Affiliations:

Nutritional Epidemiology Group, School of Food Science and Nutrition, University of Leeds, Leeds, LS2 9JT.

Sources of funding:

This study was funded by the Tertiary Education Trust Fund (TETFund) of Nigeria. MAZ is currently funded by Wellcome Trust (217446/Z/19/Z).

Conflicts of interest: None

Corresponding author:

Dr. Michael A. Zulyniak,

School of Food Science and Nutrition, University of Leeds, Leeds, LS2 9JT.

Email: m.a.zulyniak@leeds.ac.uk; Ph. +44(0)1133430685

Total word count: 11110

Number of Tables: 6

Number of figures: 8

Number of supplementary digital content files

Abstract

Background: Contrary to North America and Europe, the prevalence of hypertension is rising in West Africa. Although diet is implicated as a contributor to this trend, nutritional guidelines in West Africa are not tailored to address this concern. This study aimed to address this limitation by investigating dietary factors common to West Africa and evaluating their association with hypertension.

Methods: PubMed, Scopus, Web of Science, and Medline were searched to identify studies that investigated diet and hypertension in West African adults. All meta-analyses used a generic inverse-variance random effects model, with subgroup analyses by age, BMI, and study location, and were performed in R.

Results: 3298 studies were identified, of which 31 (n=48,809 participants) satisfied inclusion criteria □ all cross-sectional. Meta-analyses of the association between dietary factors and hypertension included: dietary fat (OR=1.76; 95% CI:1.44,2.14; p<0.0001), red meat (OR=1.51; 95% CI: 1.04, 2.18; p = 0.03), junk-food (OR=1.41; 95% CI: 1.19, 1.67; p < 0.0001), dietary salt (OR= 1.25; 95% CI: 1.12, 1.40; p<0.0001), alcohol (OR= 1.17; 95% CI: 1.03, 1.32; p= 0.013), and ‘fruits and vegetables’ (OR=0.80; 95% CI: 0.24, 1.17; p < 0.0001). Subgroup analyses suggested that ‘fruit and vegetable’ consumption is less protective in the elderly.

Conclusion: High consumption of dietary salt, red meat, dietary fat, junk food, and alcohol are associated with increased odds of hypertension, whereas high fruit and vegetable appear protective. This region-specific evidence will support the development of nutritional assessment tools for clinicians, patients, and researchers aiming to reduce hypertension in West Africa.

Keywords: Hypertension, meta-analysis, West Africa, dietary factors, systematic review

Introduction

Hypertension, defined as a sustained elevation of blood pressure $\geq 140/90$ mmHg, remains the leading preventable risk factor for cardiovascular disease and the number one cause of death globally [1]. Approximately 40% of people aged 30-79 years have hypertension, corresponding to one in three adults (~1.3 billion in 2019), with two-thirds of cases living in low- and middle-income countries, including African countries [2, 3]. The most recent WHO data show that the African region has the highest prevalence of hypertension (35.5%), while the Americas have the lowest (18%) [4]. Countries such as the UK, the US, and China have seen a decrease in the prevalence of hypertension, with rates declining by 6.25%, 11.38%, and 16.3%, respectively, from 2010 to 2019 [5-7], while West African countries like Nigeria have shown a consistent increase in the prevalence of hypertension. Most recent data suggest a 15.3% increase in hypertension rates in Nigeria from 2010 to 2019 [8, 9], which has coincided with an increase in heart disease, stroke, and chronic kidney disease [10, 11].

This increased trend in hypertension in Nigeria and other West African countries has been partly attributed to increased unhealthy dietary practices (consumption of a diet that is high salt/sodium, low potassium consumption, unhealthy dietary fat and oils, refined sugar, alcohol, and low 'fruit and vegetable') and lack of physical activity [1, 12-15]. Indeed, diet has been attributed to nearly one-third of all hypertension cases [16]. This positions diet as a major risk factor of interest in West Africa for reducing hypertension prevalence. In the UK, from 2003 to 2011, government and industry initiatives led to mean reductions in salt (-1.4 g/day) and increased fruit and vegetable (+0.2 portion/day) intake, which coincided with reductions in mean blood pressure

(systolic = -2.7 ± 0.34 mm Hg; diastolic = -1.1 ± 0.23 mm Hg), stroke (-42%), and ischaemic heart disease mortality (-40%) [17]. In response, Nigeria and other West African countries outlined national nutritional guidelines to combat all non-communicable diseases (NCDs), including hypertension[18, 19]; however, the translation of these guidelines into actionable advice for clinicians for combating hypertension specifically has been a challenge, possibly because (i) clinicians in Nigeria and other West African countries have not been provided with an effective strategy to provide regionally-specific dietary information to their patients, and (ii) the evidence used to inform West African diet recommendations is based on evidence weighted towards studies from non-African countries which may not be translatable or applicable to manage the contribution of diet towards the rising trend of hypertension risk in Nigeria and other West African countries.

To address this, an understanding of the dietary habits and risk of hypertension in Nigeria and other West African countries is needed to confirm current recommendations and improve current dietary assessment strategies to combat hypertension. Therefore, this study aimed to undertake a systematic review and meta-analysis to provide regionally specific evidence relating to the association between dietary factors and hypertension risk in West Africa that can be used to inform the development of nutritional assessment tools for clinicians, patients, and researchers and contribute towards reducing the prevalence of hypertension in West Africa.

Methods

First, we performed a pilot study and evaluated the summaries of the articles we identified through our search on PubMed and that fulfilled the eligibility criteria. This step enabled us to obtain an outline of the key aspects that ought to be encompassed in the review and helped us to prepare the protocol for the systematic review and meta-analysis.

Study design and registration

The strategy for the systematic review and meta-analysis was predefined with PROSPERO (CRD42022339736), which followed the guidelines for the Meta-analyses of observational epidemiological studies [20], and Preferred Reporting Items for Systematic review and Meta-Analysis (PRISMA) 2015 [21].

Literature search strategy

The systematic literature search was performed using a structured PICO (population, intervention, comparison, and outcome) framework and Medical Subject Headings (MESH) indexing with key terms (and synonyms thereof). The PICO elements included the targeted West African nations (P), high dietary exposure (I), low dietary exposure (C), and hypertension/high blood pressure (O). A comprehensive search was conducted across PubMed, Ovid Medline, Scopus, and Web of Science, to identify studies published between January 2000 and February 2023. The full search strategy used for PubMed is given in **Table S1** in the supplementary material. To ensure that no relevant

studies were missed, the citation lists of included studies were searched to identify additional relevant studies that meet the inclusion criteria.

Outcome measures

Four of the most prevalent adverse outcomes of blood pressure were chosen as outcomes of interest for this review and meta-analysis. These included high systolic blood pressure, high diastolic blood pressure, high mean arterial blood pressure, and high pulse pressure.

Study selection

Observational studies with summary data (odds ratios (OR), relative risks (RR), or hazard ratios (HRs) with corresponding 95% confidence intervals (CI), p-value, means with standard deviation or standard error) that addressed any dietary intervention on hypertension or high blood pressure in healthy West African populations with participants aged ≥ 18 years were included in the study. Studies were excluded if the data were: hypertensive subjects alone, animal and cells studies, non-West African populations, non-investigative studies (such as editorials, reviews, and conference abstracts), pregnancy studies, cardiovascular diseases (such as stroke, myocardial infarction) or studies in cancer populations, studies that are not related to diet, food or nutrition, studies involving only alcohol, smoking, or biomarkers of diet. The screening of 'title and abstract' and 'full text' was performed in duplicate in DistillerSR version 2.35 [22].

Data collection and extraction

Using a standardized form, data from each study were independently extracted by two reviewers for all variables. Dietary factors identified from the observational studies were analyzed separately. Information extracted from each study included: study details (first author, year of publication, geographic location, number of participants, number of cases, study design), demographic information related to confounding (e.g., age, sex, country, health status), anthropometric data (e.g., body mass index (BMI), methods of quantifying and measuring diet, types of measurements and the studies outcomes (blood pressure), univariable or multivariable effect estimate (RRs, HRs, or ORs including the corresponding CIs), and adjusted covariates. Where multiple analytical models were provided, effect estimates from fully adjusted were extracted. When the risk estimates for participants were reported separately for men and women in a study or for similar food groups in this same population, the ORs were combined using a fixed-effect model [23].

Quality assessment

To assess the quality of the studies, a modified Newcastle-Ottawa Scale (NOS) adapted for cross-sectional studies was used to evaluate the study quality of cross-sectional studies of the included studies [24]. The scale assesses the selection of participants, comparability of groups, and assessment of outcomes. A total of 0-9 was assigned to each study based on the number of stars, with a higher score indicating higher quality. The risk of bias assessment was carried out independently by two researchers. Disagreements between researchers were resolved by a third researcher.

Data synthesis and analysis

To derive summary odds ratios (ORs) and 95% confidence intervals (Cis), we applied a meta-analysis to investigate the associations of the dietary factors of the highest consumers compared with the lowest consumers using the generic inverse-variance weighted random-effects model. Using an inverse variance method, we calculated the standard errors for the logarithm odds ratio of each study. This was, in turn, considered the estimated variance of the logarithm odds ratio. The degree of variability between studies (heterogeneity) (τ^2) was estimated using the DerSimonian-Laird estimator (DL) [25]. In the meta-analyses with < 5 studies, the Hartung- Knapp-Sidik-Jonkman (HKSJ) random effects model was also used. Additionally, where ≤ 3 studies were available for meta-analysis, a fixed effects model was also performed to retain power, and Bonferroni correction was applied where necessary [26-28].

The heterogeneity between studies was evaluated using Cochran's Q statistics [29] and the I^2 statistic, with uncertainty intervals, where $I^2 > 50\%$ indicated significant statistical heterogeneity [23, 30, 31]. Subgroup analyses and meta-regression were conducted to explore potential sources of heterogeneity by pre-specified characteristics and hypertension confounders: (i) Body mass index (BMI) (a cut-off of BMI ≥ 25 kg/m² was used to classify overweight/obese), (ii) mean population age, and (iii) study location. Sensitivity analysis was performed when $I^2 > 50\%$ to estimate the influence of a single study on the overall pooled results by systematically omitting a single study and observing its influence on the overall effect size. Publication bias was done by funnel plots inspection, where ≥ 10 studies were available for a single meta-analysis. Where publication bias was visibly apparent further analyses (Egger's regression and rank correlation test) were undertaken to estimate the effect of reporting bias on study results

using the standard error of the observed outcomes as predictors, which are used to check for funnel plot asymmetry [32, 33]. The trim-and-fill method was also used to correct publication bias if detected. Where no significant effects were found, post-hoc power analyses were undertaken using fixed-effects ($\tau^2 = 0$) or random-effects ($\tau^2 > 0$) methods. Power $\geq 80\%$ was considered adequate [23]. All statistical analyses were performed using meta-package (version 6.0-0) [34] in R [35].

Results

Literature search

The literature search and study selection processes are summarised in the PRISMA flow diagram in **Figure 1**. A total of 5883 records were identified from the initial database search (Medline =1371, PubMed=1644, Scopus =1599, Web of Science =1269). After removing duplicates (n=2585 records) and those that did not fit the inclusion criteria (n=3187), 123 articles were retrieved for full-text screening, from which 31 studies were included in the meta-analysis. Seventeen studies reported on fruit and vegetable, 10 on fruit/vegetables, 6 on junk food (fried and fast food), 4 on red meat, 5 on dietary fats (fatty food), and 8 studies reported on alcohol.

Study characteristics

In total, 31 cross-sectional studies in West Africa □ including Nigeria (n=11), Ghana (n=9), Côte d'Ivoire (n=1), Benin republic (n=3), Cameroon (n=3), Burkina Faso (n=2), Togo (n=1), and 1 study from West Africa (Nigeria=1 report, Ghana= 1 report, and Burkina Faso= 1 report) □ were included in the meta-analysis (**Table S2**). Sample sizes ranged from 134 to 9,367, with a total of 48,809 participants, of which 12,898 (26.4%) were cases of hypertension. Dietary factors were assessed by the survey instrument

(WHO STEPwise approach to NCD risk factor surveillance), food frequency (FFQ), or validated questionnaire.

Data quality

The quality was assessed using a modified Newcastle-Ottawa Scale (NOS) for cross-sectional studies [24]. The criteria for allocating stars (out of a total of 9 stars) awarded to each study according to this NOS criteria can be found in **Table S3**. The 31 studies included in the meta-analysis were rated with high quality (score 7-9) and a low bias risk.

Dietary factors associated with hypertension in West Africa

Figure 2 illustrates the random effects model meta-analysis of the pooled estimates (odds ratio and 95% confidence interval) and heterogeneity of the dietary factors associated with hypertension when comparing high versus low consumers in West Africa. The dietary factors include fruit and vegetable, dietary salt, junk food, red meat, dietary fat, and alcohol.

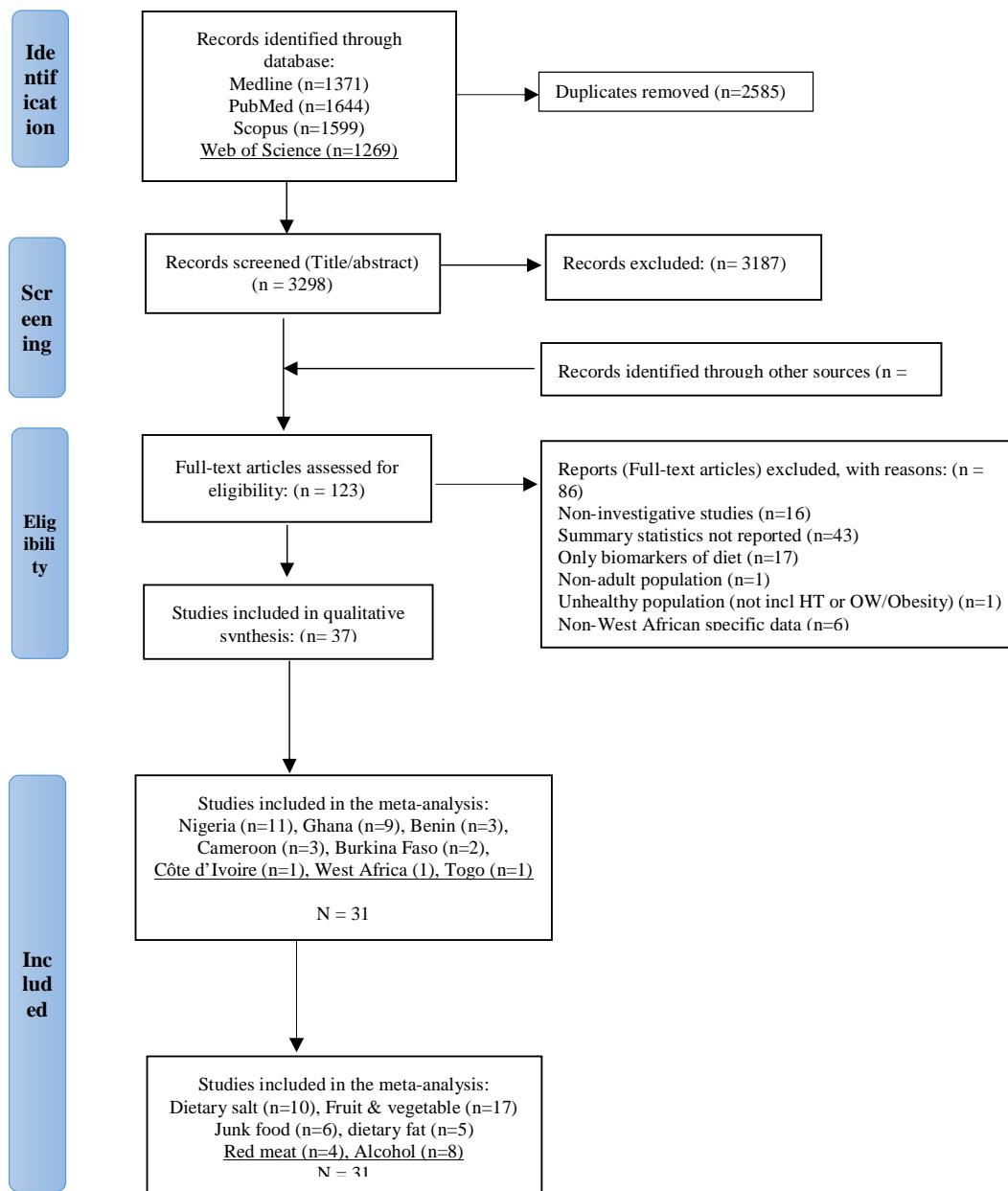


Figure 1: PRISMA flow diagram. Outline of identification of studies in OVID Medline, Web of Science, Scopus, and PubMed and record of the screening process and selection of articles for the systematic review and meta-analysis of the association between dietary factors and hypertension in West Africa. HT-hypertension, incl: including OW: overweight.

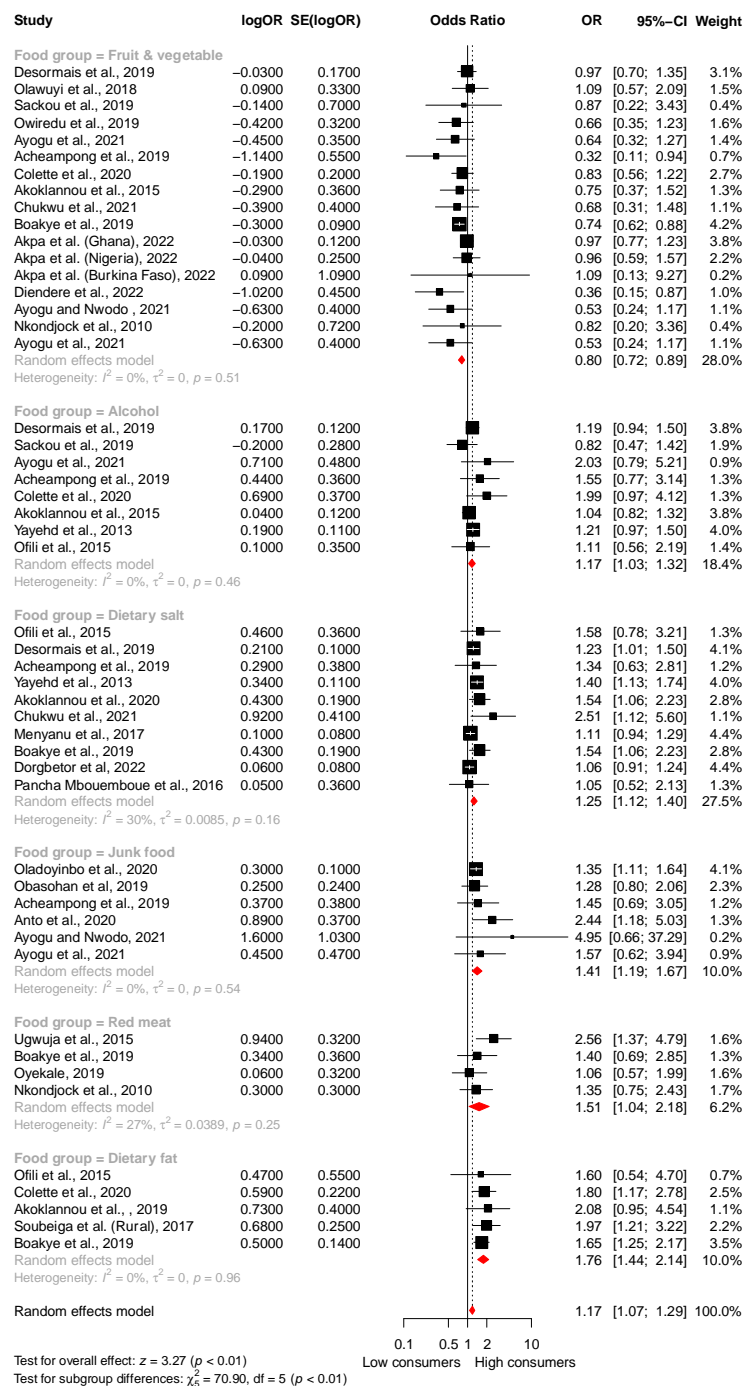


Figure 2: Meta-analysis of the association between dietary factors and hypertension in West Africa: Illustrating the identified dietary factors, the effect sizes, and the overall estimate of the random effects model and heterogeneity. CI: Confidence interval, logOR: Treatment effect, OR: Odds ratio, SE(logOR): Standard error.

Fruit and vegetable consumption

Seventeen cross-sectional studies from West Africa with 19,675 participants reported on the association between fruit and vegetable consumption with the risk of hypertension □ 6,376 (32.4%) adults had hypertension. The types of fruit and vegetable investigated were not specified. Mean effect sizes ranged from 0.32 to 1.09. The overall meta-analysis suggested that consuming high amounts of fruit and vegetable was associated with 20% reduced odds of hypertension (OR=0.80; 95% CI: 0.24, 1.17; $p < 0.0001$, $I^2 = 0\%$) compared to low consumers (**Figure 3**). No heterogeneity or potential publication bias was evident in the funnel plot (**Figure S4**), rank correlation test ($p=0.17$), or Egger's regression test ($p = 0.18$). Subgroup analysis and meta-regression indicated that while a protective effect of fruit and vegetable consumption against hypertension was observed in all West African nations, age significantly moderated the association between fruit and vegetable consumption and hypertension. It may be less pronounced in individuals aged ≥ 50 years. However, this may be due to fewer studies in the subgroup of individuals aged ≥ 50 years. Conversely, BMI and study location did not appear to modify the association (**Table 1** and **Figures S2 and S3**). According to the results, high consumption of fruits and vegetables is associated with a 20% reduction in the odds of hypertension in West Africa. Furthermore, this correlation appears to be less significant among elderly individuals.

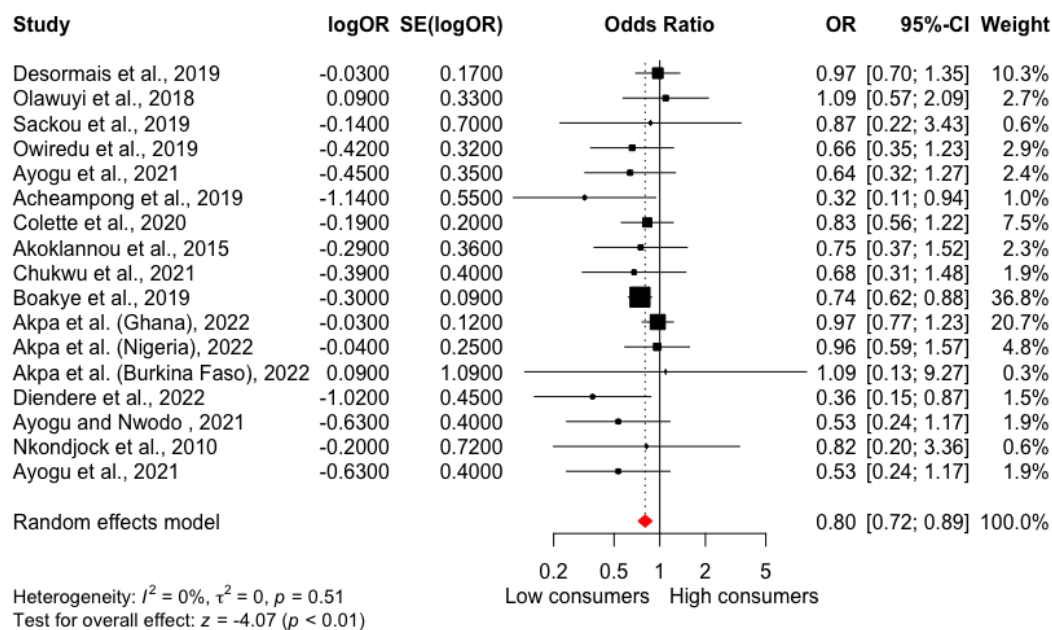


Figure 3: Meta-analysis of the association between fruit and vegetable consumption and hypertension in West Africa. High fruit and vegetable consumption reduces the odds of hypertension by 20% with no heterogeneity compared to low consumption. CI: Confidence interval, logOR: Treatment effect, OR: Odds ratio, SE(logOR): Standard error.

Table 1: Meta-regression results for moderating effects of mean age, study location, and BMI on the association between fruit and vegetable consumption and hypertension in West Africa.

Moderator	n	Coefficient (95% CI)	*p -Value	*I ² (%)	R ² index (%)	H ²
Bivariate meta-regression						
Mean age (years)	17	0.015 (0.001, 0.030)	0.04*	0	0	1.00
Body mass index (kg/m ²)	17	-0.037 (-0.134, 0.059)	0.45	0	0	1.00
Location (Nigeria as ref.)	17	0.051 (-0.245, 0.347)	0.74	0	0	1.00
Multivariate meta-regression						
Test of moderators	17	QM (df = 3) = 1.0	0.80	0	0	1.00
Mean age (years)	17	0.015 (-0.016, 0.046)	0.33			
Body mass index (kg/m ²)	17	-0.033 (-0.195, 0.129)	0.67			
location (Nigeria as ref.)	17	-0.081 (-0.690, 0.528)	0.79			

Abbreviations:

CI: Confidence interval,

H²: Unaccounted variability/ sampling variability

I²: Residual heterogeneity / unaccounted variability,

n- Number of studies,

OR-Odds ratio,

R²: Amount of heterogeneity accounted for.

*I², and *p-Value related to the test of moderators.

* Significant at 0.05

Dietary salt consumption

A total of 10 cross-sectional studies (n=16,535 participants) reported on the association between dietary salt and hypertension risk □ 4497 (27.2%) adults had hypertension. Mean effect sizes ranged from 1.05 to 2.51. The analysis revealed that high consumption of dietary salt increased the odds of hypertension by 25% in West Africa (OR= 1.25; 95% CI: 1.12, 1.40; p<0.0001, $I^2=30%$) compared to low consumers with moderate amount heterogeneity (**Figure 4**). No potential publication bias was evident in the funnel plot (**Figure S4**), rank correlation test (p=0.05), or Egger's regression test (p = 0.31). Subgroup analysis and meta-regression suggested that mean age, BMI, and study location did not seem to modify the association, as shown in **Table 4 and Figures S5 and S6**. This analysis demonstrated that high dietary salt consumption increased the odds of hypertension by 25% in the West African adult population.

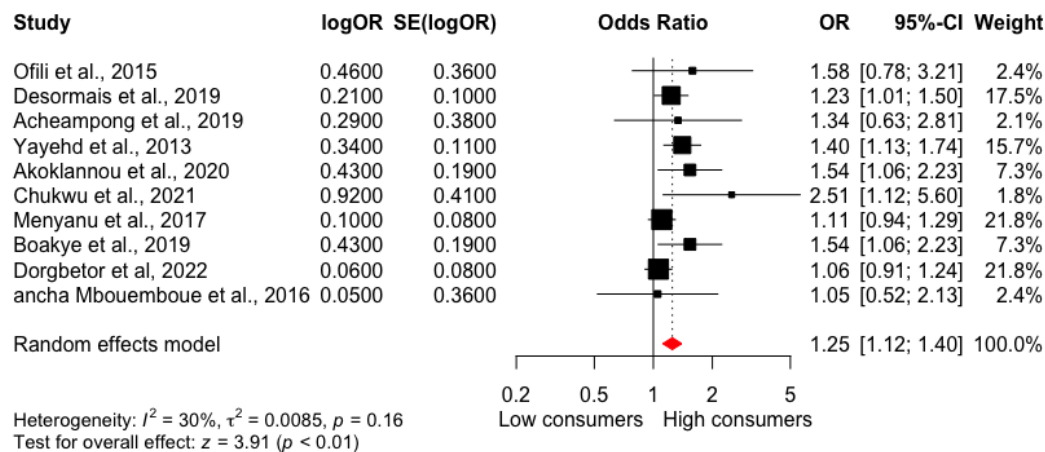


Figure 4: Meta-analysis of the association between dietary salt consumption and hypertension in West Africa. High dietary consumption increases the odds of hypertension by 25% with moderate heterogeneity compared to low consumption. CI- Confidence interval, logOR- Treatment effect, OR- Odds ratio, SE(logOR)- Standard error.

Table 2: Meta-regression results for moderating effects of mean age, study location, and BMI on the association between dietary salt consumption and hypertension in West Africa.

Moderator	n	Coefficient (95% CI)	*p Value	*I ² (%)	R ² index (%)	H ²
Bivariate meta-regression						
Mean age (years)	10	-0.004 (-0.019, 0.012)	0.63	36	0	1.58
Body mass index (kg/m ²)	10	0.022 (-0.027, 0.072)	0.38	28	4	1.38
Location (Nigeria as ref.)	10	-0.468 (-1.015, 0.079)	0.09	19	52	1.23
Multivariate meta-regression						
Test of moderators	10	QM (df = 3) = 1.25	0.74	0	0	1.00
Mean age (years)	10	-0.006 (-0.036, 0.025)	0.72			
Body mass index (kg/m ²)	10	0.018 (-0.091, 0.127)	0.74			
location (Nigeria as ref.)	10	-0.470 (-1.370, 0.430)	0.31			

Abbreviations:

CI: Confidence interval,

H²: Unaccounted variability/ sampling variability

I²: Residual heterogeneity / unaccounted variability,

n- Number of studies,

OR-Odds ratio

R²: Amount of heterogeneity accounted for.

*I², and *p-Value related to the test of moderators.

* Significant at 0.05

Junk food consumption

In the meta-analysis of the association between junk food and the risk of hypertension in West Africa, 6 cross-sectional studies were analyzed with 2,321 participants, of which 781 (33.6%) had hypertension. Junk food was defined as fried food (fried rice, fried chicken, beef, fried yam, and potatoes), fast food, fried snacks (puff-puff, fries, chips), cakes, and burgers. The mean effect sizes across individual studies ranged from 1.28 to 4.95. The meta-analysis demonstrated that consumption of high amounts of junk food was associated with increased odds of hypertension by 41% (OR=1.41; 95% CI: 1.19, 1.67; $p < 0.0001$, $I^2=0\%$) compared to low consumers in West Africa (**Figure 5**). No heterogeneity or publication bias was observed (**Figure S7**), rank correlation test ($p=0.06$), or Egger's regression test ($p=0.26$). Subgroup analysis and meta-regression did not suggest a moderating effect by mean population age, BMI, or study location (**Table 4** and **Figures S8 and S9**). This finding indicates that high junk food consumption increases the odds of hypertension by 41% in West Africa.

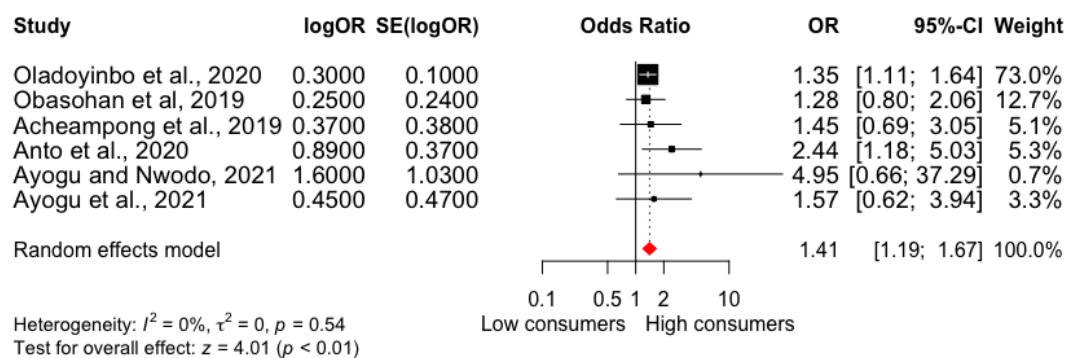


Figure 5: Meta-analysis of the association between junk food consumption and

hypertension in West Africa. High junk food consumption increased the odds of hypertension by 41% with no heterogeneity compared to low consumption. CI- Confidence interval, logOR- Treatment effect, OR- Odds ratio, SE(logOR)- Standard error.

Table 3: Meta-regression results for moderating effects of mean age, study location, and BMI on the association between junk food consumption and hypertension in West Africa.

Moderator	n	Coefficient (95% CI)	p Value	I^2 (%) *	R^2 index (%)	H^2
Bivariate meta-regression						
Mean age (years)	6	0.001 (-0.031, 0.033)	0.96	2	0	1.00
Body mass index (kg/m ²)	6	0.043 (-0.048, 0.134)	0.35	0	0	1.00
Location (Nigeria as ref.)	6	0.329 (-0.220, 0.877)	0.24	0	0	1.00

Multivariate meta-regression						
Test of moderators	6	QM (df = 3) = 0.96	0.74	0	0	1.00
Mean age (years)	6	-0.039 (-0.116, 0.039)	0.33			
Body mass index (kg/m ²)	6	0.077 (-0.342, 0.495)	0.72			
location (Nigeria as ref.)	6	0.400 (-1.573, 2.374)	0.69			

Abbreviations:

CI: Confidence interval,

H²: Unaccounted variability/ sampling variability

I²: Residual heterogeneity / unaccounted variability,

n- Number of studies,

OR-Odds ratio,

R²: Amount of heterogeneity accounted for.

*I², and *p-Value related to the test of moderators.

* Significant at 0.05

Red meat consumption

The meta-analysis of 4 cross-sectional studies investigating the relationship between red meat consumption and hypertension in West Africa included 10,451 participants, with 1,620 (15.5%) cases of hypertension. Red meat was defined as unprocessed meats from cows, goats, pork, and sheep. The mean effect sizes from the individual studies ranged from 1.06 to 2.56. The meta-analysis suggested that high red meat consumption was

associated with a 51% increase in the odds of hypertension (OR=1.51; 95% CI: 1.04, 2.18; $p = 0.03$, $I^2=27\%$) compared to low consumers with a moderate amount of heterogeneity (**Figure 6**). No heterogeneity or publication bias was observed (**Figure S10**), rank correlation test ($p=0.72$), or Egger's regression test ($p= 1.00$). Subgroup analysis and meta-regression did not suggest moderating effect of mean age, BMI, and study location on the association between the consumption of red meat and hypertension (**Table 5 and Figures S11 and S12**). This highlights that consuming a high amount of red meat significantly increases the odds of hypertension in West Africa by 51%.

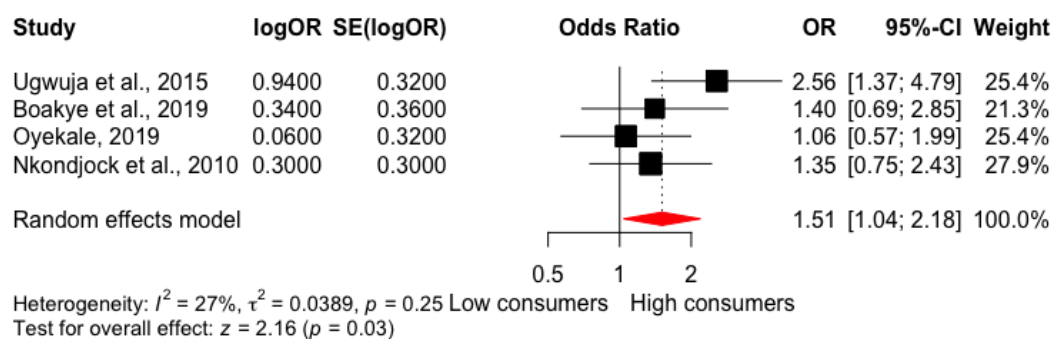


Figure 6: Meta-analysis of the association between red meat consumption and hypertension in West Africa. High consumption of red meat increased the odds of hypertension by 51%, with moderate heterogeneity compared to low consumption. CI-

Confidence interval, logOR- Treatment effect, OR- Odds ratio, SE(logOR)- Standard error.

Table 4: Meta-regression results for moderating effects of mean age, study location, and BMI on the association between red meat consumption and hypertension in West Africa.

Moderator	n	Coefficient (95% CI)	p Value	I ² (%) *	R ² index (%)	H ²
Bivariate meta-regression						
Mean age (years)	4	0.059 (-0.038, 0.156)	0.23	16	51	1.18
Body mass index (kg/m ²)	4	-0.062 (-0.394, 0.271)	0.77	48	0	1.92
Location (Nigeria as ref.)	4	-0.711 (-1.438, 0.015)	0.05	0	100	1.00
Multivariate meta-regression						
Test of moderators		QM (df = 3) = 2.04	0.56	0	0	1.00
Mean age (years)	4	-0.000 (-0.070, 0.070)	0.99			

Body mass index (kg/m ²)	4	0.060 (-0.411, 0.531)	0.80
location (Nigeria as ref.)	4	-0.843 (-2.168, 0.481)	0.21

Abbreviations:

CI: Confidence interval,

H²: Unaccounted variability/ sampling variability

I²: Residual heterogeneity / unaccounted variability,

n- Number of studies,

OR-Odds ratio,

R²: Amount of heterogeneity accounted for.

*I², and *p-Value related to the test of moderators.

* Significant at 0.05

Dietary fat consumption

The meta-analysis of 5 cross-sectional studies examining the association between dietary fat and hypertension in West Africa included 5,233 participants, including 1,094 (20.9%) cases of hypertension. Dietary fat was defined as saturated oil, coconut oil, palm and palm oil, butter, lard, margarine, and groundnut oil. Effect sizes from the individual studies ranged from 1.60 to 2.08. The meta-analysis demonstrated that high dietary fat consumption was associated with 76% higher odds of hypertension (OR=1.76; 95% CI: 1.44, 2.14; p < 0.0001, I² = 0%) compared to low consumers (**Figure 7**). No heterogeneity or publication bias was demonstrated by the funnel plot

(**Figure S13**), Egger’s regression test ($p= 0.89$), and Begg’s test ($p= 0.48$) in the meta-analysis. Subgroup analysis and meta-regression did not suggest a moderating effect on the mean population age, BMI, or study location (**Table 5** and **Figures S14** and **S15**). This suggests that high dietary fat consumption increases the odds of hypertension by 76% in West Africa.

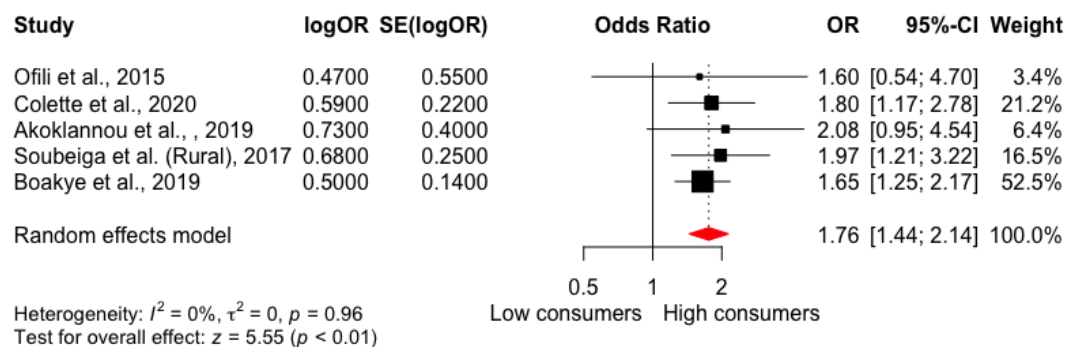


Figure 7: M-analysis of the association between dietary fat consumption and hypertension in West Africa. High dietary fat consumption increased the odds of hypertension by 76% with no heterogeneity compared to low consumption. CI- Confidence interval, logOR- Treatment effect, OR- Odds ratio, SE(logOR)- Standard error.

Table 5: Meta-regression results for moderating effects of mean age, study location, and BMI on the association between dietary fat consumption and hypertension in West Africa.

Moderator	n	Coefficient (95% CI)	p Value	I^2 (%) *	R^2 index (%)	H^2
Bivariate meta-regression						
Mean age (years)	5	-0.015 (-0.077, 0.048)	0.64	0	0	1.00
Body mass index (kg/m ²)	5	0.016 (-0.057, 0.088)	0.67	0	0	1.00
Location (Nigeria as ref.)	5	0.096 (-1.001, 1.193)	0.86	0	0	1.00
Multivariate meta-regression						
Test of moderators		QM (df = 3) = 0.16	0.98	0	0	1.00
Mean age (years)	5	-0.029 (-0.193, 0.136)	0.74			
Body mass index (kg/m ²)	5	0.027 (-0.142, 0.193)	0.76			
location (Nigeria as ref.)	5	-0.226 (-2.703, 2.252)	0.56			

Abbreviations:

CI: Confidence interval,

H^2 : Unaccounted variability/ sampling variability,

I^2 : Residual heterogeneity / unaccounted variability,

n- Number of studies,

OR-Odds ratio,

R^2 : Amount of heterogeneity accounted for.

* I^2 , and * p -Value related to the test of moderators.

* Significant at 0.05

Alcohol consumption

A total of 8 cross-sectional studies (n= 6,263 participants, including 2,119 (33.8%) cases of hypertension) reported on the association between alcohol and odds of hypertension were included in the meta-analysis, with effect sizes ranging from 0.82 to 2.03. Compared to low consumers, the meta-analysis demonstrated that high consumption of alcohol increased the odds of hypertension by 17% (OR= 1.17, 95% CI: 1.03, 1.32; $p= 0.013$, $I^2 = 0\%$) (**Figure 8**). No heterogeneity or publication bias was demonstrated by the funnel plot (**Figure S16**), Egger's regression test ($p= 0.46$), and rank correlation test ($p= 0.17$) in the meta-analysis. Subgroup analysis and meta-regression did not suggest a moderating effect on the mean population age, BMI, or study location (**Table 6** and **Figures S17 and S18**). This suggests that high alcohol consumption increases the odds of hypertension by 17% in West Africa.

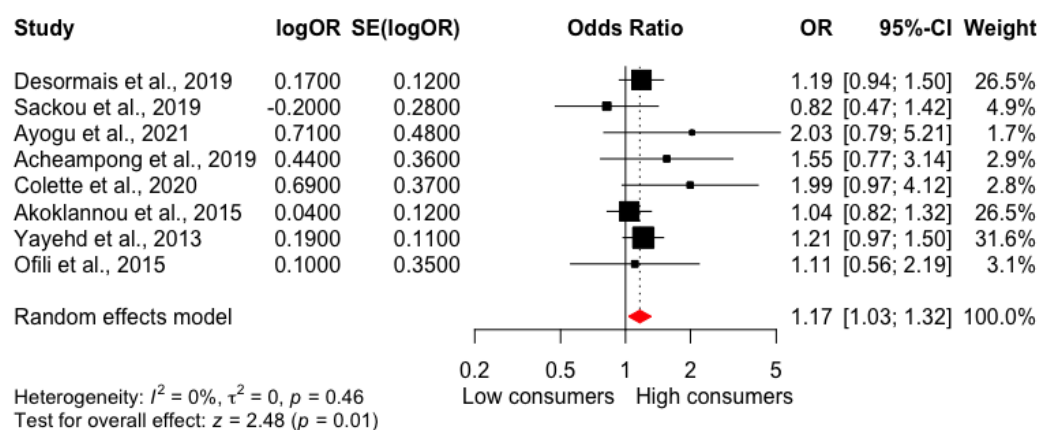


Figure 8: Meta-analysis of the association between alcohol consumption and hypertension in West Africa. High alcohol consumption increased the odds of hypertension by 17% compared to low consumers with no amount of heterogeneity. CI- Confidence interval, logOR- Treatment effect, OR- Odds ratio, SE(logOR)- Standard error.

Table 6: Meta-regression results for moderating effects of mean age, study location, and BMI on the association between alcohol consumption and hypertension in West Africa.

Moderator	n	Coefficient (95% CI)	p Value	I^2 (%) *	R^2 index (%)	H^2
Bivariate meta-regression						
Mean age (years)	8	0.017 (-1.653, 0.576)	1.22	0	0	1.00
Body mass index (kg/m ²)	8	0.000 (-0.050, 0.050)	0.99	10	0	1.12
Location (Nigeria as ref.)	8	-0.167 (-0.741, 0.407)	0.57	6	0	1.07
Multivariate meta-regression						
Test of moderators		QM (df = 3) = 0.30	0.96	0	0	1.00
Mean age (years)	8	0.012 (-0.053, 0.076)	0.72			
Body mass index (kg/m ²)	8	-0.008 (-0.124, 0.108)	0.89			
location (Nigeria as ref.)	8	-0.102 (-1.152, 0.949)	0.85			

Abbreviations:

CI: Confidence interval,

H^2 : Unaccounted variability/ sampling variability,

I^2 : Residual heterogeneity/unaccounted variability,

n- Number of studies,

OR-Odds ratio,

R^2 : Amount of heterogeneity accounted for.

I^2 , and p -Value related to the test of moderators.

* Significant at 0.05

Discussion

This systematic review and meta-analysis provide regional-specific evidence to support nutritional guidelines and the development of prevention strategies and tools to reduce the prevalence of hypertension in West Africa. Thirty-one (31) cross-sectional studies with 48,809 participants, including 12,898 (26.4%) adults with hypertension, reported the association between common dietary factors (fruit and vegetables, dietary salt, junk food, red meat, dietary fat, and alcohol) and odds of hypertension. Remarkably, this is the first systematic review and meta-analysis to comprehensively synthesize and analyze the impact of specific dietary factors on hypertension in adults living in West Africa. The results indicate that high consumption of dietary fat, red meat, junk food, dietary salt, and alcohol were associated with an increased likelihood of hypertension in West Africa, while high fruit and vegetable consumption was protective against hypertension. Sensitivity analyses within all dietary factors suggest robust and consistent associations, although some moderators were identified.

In the analysis of fruit and vegetable consumption, the single “healthy” food that was available for analysis, we reported that high fruit and vegetable intake is associated with

a reduced risk of hypertension by 20%. This finding is consistent with previous meta-analyses conducted in other regions of the world, such as a meta-analysis of cohort studies by Wu et al. and Schwingshackl et al., which found that high fruit and vegetable intake was associated with a reduction in the incident risk of hypertension, compared to the lowest consumers [36, 37]. According to the meta-analysis of Schwingshackl et al., involving 7 cohort studies for vegetables and fruits, involving 94,772 incident cases of hypertension, a high intake of ‘vegetables and fruits’ reduce the risk of hypertension by ~7% [37] while the meta-analysis by Wu et al., involving 6 cohort studies demonstrated that high intake of fruit and vegetable reduced the incident of hypertension by 10% [36]. However, both studies reported a moderate to a significant amount of heterogeneity, which may be due to increased diversity in study locations and cultures. In contrast, the observed heterogeneity in effect sizes of our study within a focused geographic region and study population reported no amount of heterogeneity; however, the observed finding that fruits and vegetables have a protective effect against hypertension may be less pronounced in elderly individuals is interesting and warrants further investigation. The results of our meta-analysis agree with the biochemical evidence linking the phytochemicals, vitamins, minerals, and fibers in fruit and vegetables that improved vascular function and antioxidant activity, ultimately reducing the risk of hypertension [38-48].

Conversely, in our analysis of less healthy dietary factors □ many of which are common in processed and convenience foods (i.e., dietary salt, saturated fats, red meat, junk food, and alcohol) □ that have been associated with increased odds of hypertension in studies outside of West Africa, we also report increased odds of hypertension in West

African studies. In our meta-analysis of dietary salt, the odds of developing hypertension were increased by 25% in individuals with high dietary salt consumption compared to those with low consumption in West Africa. Our findings agree with previous meta-analyses by Subasinghe et al. and Zhang et al., which reported a positive association between dietary salt intake and hypertension in various populations [49, 50]. The meta-analysis by Subasinghe et al., with 18 studies in rural and urban populations of low to middle-income countries, reported that high dietary salt intake was associated with a 33% increased risk of hypertension compared to the lowest consumers [49], while Zhang et al., reported that among 23 studies in China, high salt intake was associated with an almost 4-fold increase in odds of hypertension [50]. Both studies found significant heterogeneity. In contrast, this meta-analysis found some heterogeneity in effect sizes among the included studies, although this was only moderate. Subgroup analysis and meta-regression suggested that the moderating effect of mean age, BMI, and study location were not significant. The results of our meta-analysis align with the pathophysiology that links salt/sodium intake to hypertension through its effect on renal salt and water retention, elevated plasma sodium levels, and increased salt sensitivity, which can lead to the expansion of extracellular fluid volume, microvascular endothelial inflammation, and structural changes in autonomic and small resistant arteries, resulting in increased systemic peripheral resistance and functional abnormalities of the cardiovascular system and hypertension [51-57].

Similarly, we report that high consumption of junk food is associated with hypertension and increases the odds of hypertension in West African adults by 41%. This finding agrees with biochemical evidence that has linked junk foods, which often contain high

amounts of saturated and trans fats, sodium, and by-products of oxidation, which can induce increased blood pressure in different mechanisms [52, 58-63]. In addition, our work agrees with previous work from outside West Africa. A cross-sectional study with 9221 Korean adults in Korea reported that high consumption of fried food led to elevated blood pressure in men and women (odds ratio of 1.62 and 2.20, respectively), compared to infrequent consumers [64], while a meta-analysis of 11 studies (8 cohort and 3 cross-sectional studies) involving 222,544 participants reported a similar positive association that suggests that fried food increased risk of hypertension by 20% compared to low consumers [65]. The absence of heterogeneity in our meta-analysis of the association between junk food and hypertension in West Africa suggests that the findings are robust and not influenced by factors such as study design, population characteristics, or other potential sources of variation. However, it is important to note that the number of studies included in the meta-analysis is relatively small. The findings of our work provide evidence that the association between junk food is associated with an increased risk of hypertension in West Africa.

Our study adds to the growing body of evidence from meta-analyses investigating the association between red meat consumption and hypertension. We found that high red meat consumption was associated with increased odds of hypertension in West Africa. Specifically, our meta-analysis of 4 studies found a 51% increase in the odds of hypertension among high red meat consumers compared to low consumers, which aligns with the meta-analysis conducted by Schwingshackl and Zhang that reported a 15-22% increase in the risk of hypertension in high red meat consumers, compared to low consumers[37] [66]. Schwingshackl et al. conducted a meta-analysis of 7 cohort

studies involving 97,745 hypertension cases on food groups and risk of hypertension and reported a positive association between the risk of hypertension and red meat intake by 15%, with substantial heterogeneity ($I^2 = 84%$) [37]. Similarly, Zhang et al. conducted a meta-analysis of 9 cohort studies on red meat, poultry, and egg consumption with the risk of hypertension and reported that high consumption of red meat increased the risk of hypertension by 22%, with substantial heterogeneity ($I^2 = 75%$) among the included studies. Our study observed moderate heterogeneity; however, the moderators examined in our meta-analysis did not significantly affect the relationship and effect size. The result of our meta-analysis reflects the proposed biological effect of high meat consumption on hypertension. Meat contains components such as saturated fat, cholesterol, high sodium levels in processed meat, haem iron, and substances formed during cooking or processing of meat that can contribute to the development of hypertension, such as heterocyclic amines, advanced glycosylation end-products, acrylamides, and trimethylamine-N-oxide. These components can affect blood lipids and lead to insulin resistance and inflammation, ultimately increasing the risk of hypertension [67-75]. In short, we confirm that in West Africa, as in other nations, high red meat consumption is associated with an increased likelihood of hypertension in adults.

Additionally, several epidemiological studies have reported an association between dietary fat and the risk of hypertension. Indeed, prospective cohort studies by Yuan et al. and Wang et al. found that high consumption of dietary fat contributed to elevated blood lipids levels and increased the risk of hypertension, with odds ratios of 1.40-1.78, suggesting a greater than 40% increase in hypertension risk associated with high dietary

fat consumption [62, 76]. Our meta-analysis of 5 cross-sectional studies supports the translation of this evidence to West Africa, specifically, that high dietary fat consumption may increase the odds of hypertension by 76%. Although our analysis could not differentiate between saturated and unsaturated fats, given the high consumption of saturated fats in West Africa through traditional cooking methods [77-80], that rely on palm and palm kernel oils, groundnut oil, coconut oil, butter, and animal fat, it is likely that saturated fats were the primary form of fat consumed. This aligns with biochemical and pathophysiological evidence that suggests that diets high in saturated fats can lead to increased levels of blood LDL-cholesterol and triglycerides, the development of atheroma in the walls of blood vessels, oxidative stress, and inflammations of the vessels wall, causing stiffness and narrowing of the lumen with reduction of vascular elasticity and lead to increased vascular resistance and hypertension [70, 81-83]. Therefore, our study supports the hypothesis that high dietary fat consumption, particularly saturated fats, is associated with an increased risk of hypertension in West Africa.

Finally, high alcohol consumption increases the odds of hypertension by 17% in West Africa in our meta-analysis. This finding is consistent with previous studies conducted in other regions, which have also reported a positive association between alcohol consumption and hypertension. A meta-analysis of 20 cohort studies (n=361,254 participants and 90,160 incident cases of hypertension) by Roerecke et al. reported that alcohol consumption increases the risk of hypertension by >19% between men and women who drank 1-2 drinks per day in comparison with abstainers with a significant amount of heterogeneity [84]. The absence of heterogeneity or publication bias suggests

that the results are reliable and robust, providing strong evidence for the relationship between alcohol consumption and hypertension in West Africa. Subgroup analysis and meta-regression were conducted to explore whether mean population age, BMI, or study location influenced the relationship between alcohol consumption and hypertension. However, no significant moderating effect was found, indicating that the relationship between high alcohol consumption and hypertension is consistent across different population subgroups in West Africa. Our meta-analysis aligns with pathophysiological evidence that alcohol stimulates renin release, which produces angiotensin II, a potent vasoconstrictor, and aldosterone increases sodium retention and water reabsorption. These effects can increase blood pressure and hypertension over time [85, 86]. Also, the production of reactive oxygen species (ROS) and reactive nitrogen species (RNS) during alcohol metabolism can lead to oxidative damage to the endothelium and vascular smooth muscle, resulting in impaired vascular function and increased vascular resistance [87, 88].

This systematic review and meta-analysis provide regional support to the dietary recommendations set forth by the World Health Organisation (WHO) and the 2014 Nigerian National Nutritional Guidelines for the reduction of hypertension. The recommendations include consuming at least 400g or five portions of fruits and vegetables per day, limiting salt intake to less than 5g per day, reducing consumption of fried and fast foods, restricting red meat consumption to no more than 350-500g or three portions per week and avoiding processed meat, keeping total dietary fat intake to less than 30% of the total energy intake and limiting the intake of alcohol to ≤ 2 drinks/day for men and ≤ 1 drink/day for women in the US and less than <14 units in

the UK [18, 89-94]. These findings provide region-specific evidence into dietary factors and hypertension risk and identified 6 dietary factors (dietary salt, junk food, dietary fat, red meat, and alcohol) as hypertension-inducing dietary factors and fruit and vegetable as protective against hypertension.

Strengths and limitations

This systematic review and meta-analysis evaluated the association between dietary factors and hypertension across West Africa has two notable limitations that could not be avoided. First, as with most observational data, nutritional data was collected by participant dietary recall, which is subject to bias. Second, with only cross-sectional studies available, we cannot infer causality. Nonetheless, our study has several notable strengths: (1) this is the first systematic review and meta-analysis that has synthesized and evaluated the association between dietary factors and hypertension across West Africa; (2) despite focussing on a specific region of Africa, a large number of studies and participants were included; (3) a diverse selection of dietary factors were identified that reflected foods items common to healthy and unhealthy patterns; and (4) analyses were critically appraised for risk of bias and power to ensure high-quality.

Conclusion

This systematic review and meta-analysis demonstrated that high consumption of dietary salt, red meat, junk food, dietary fat, and alcohol are associated with an increased likelihood of hypertension in West Africa. In contrast, high fruit and vegetable consumption appears protective. The results of this study will offer regional-specific evidence for developing clinical nutritional assessment tools for clinicians,

patients, and researchers and reduce the ever-increasing trend of hypertension in West Africa.

Acknowledgments

The authors sincerely thank the Tertiary Education Trust Fund (TETFund), Nigeria, for funding this study. We also acknowledge the contributions of all the authors and researchers whose work was included in this systematic review and meta-analysis. Finally, we thank all the volunteers in included studies across several countries in West Africa for their dedication and commitment.

References

1. Mills, K.T., J.D. Bundy, T.N. Kelly, J.E. Reed, P.M. Kearney, K. Reynolds, J. Chen, and J. He, *Global Disparities of Hypertension Prevalence and Control: A Systematic Analysis of Population-Based Studies From 90 Countries*. *Circulation*, 2016. **134**(6): p. 441-50.
2. WHO. *Hypertension Factsheet*. World Health Organization. 2021 [28 March 2022]; Available from: <https://www.who.int/news-room/factsheets/detail/hypertension>.
3. Ferdinand, K.C., *Uncontrolled hypertension in sub-Saharan Africa: Now is the time to address a looming crisis*. *J Clin Hypertens (Greenwich)*, 2020. **22**(11): p. 2111-2113.

4. WHO. *Global Health Observatory. Prevalence of hypertension among adults aged 30-79 years*. World Health Organization 2022 [28 March 2022]; Available from: <https://www.who.int/data/gho/data/indicators/indicator-details/gho/prevalence-of-hypertension-among-adults-aged-30-79-years>.
5. Zhang, M., Y. Shi, B. Zhou, Z. Huang, Z. Zhao, C. Li, X. Zhang, G. Han, K. Peng, X. Li, Y. Wang, M. Ezzati, L. Wang, and Y. Li, *Prevalence, awareness, treatment, and control of hypertension in China, 2004-18: findings from six rounds of a national survey*. *BMJ*, 2023. **380**: p. e071952.
6. Ostchega, Y., C.D. Fryar, T. Nwankwo, and D.T. Nguyen, *Hypertension Prevalence Among Adults Aged 18 and Over: United States, 2017-2018*. NCHS Data Brief, 2020(364): p. 1-8.
7. Conor Stewart. *Prevalence of adults who have hypertension in England from 2003 to 2019, by gender*. 2022 [2022, December 20]; Available from: <https://www.statista.com/statistics/1124955/hypertension-prevalence-by-gender-in-england-uk/>.
8. Adeloje, D. and C. Basquill, *Estimating the prevalence and awareness rates of hypertension in Africa: a systematic analysis*. *PLoS One*, 2014. **9**(8): p. e104300.
9. World Health Organization. *Global Health Observatory. Prevalence of hypertension among adults aged 30-79 years*. 2021 [2022, December 20]; Available from: <https://www.who.int/data/gho/data/indicators/indicator-details/gho/prevalence-of-hypertension-among-adults-aged-30-79-years>.

10. Adedoyin, R.A., C.E. Mbada, M.O. Balogun, T. Martins, R.A. Adebayo, A. Akintomide, and P.O. Akinwusi, *Prevalence and pattern of hypertension in a semiurban community in Nigeria*. *Eur J Cardiovasc Prev Rehabil*, 2008. **15**(6): p. 683-7.
11. Ike, S.O., *Prevalence of hypertension and its complications among medical admissions at the University of Nigeria Teaching Hospital, Enugu (Study 2)*. *Niger J Med*, 2009. **18**(1): p. 68-72.
12. Cappuccio, F.P., S.M. Kerry, F.B. Micah, J. Plange-Rhule, and J.B. Eastwood, A *community programme to reduce salt intake and blood pressure in Ghana [ISRCTN88789643]*. *BMC Public Health*, 2006. **6**: p. 13.
13. Akpa, O.M., A.P. Okekunle, O.J. Asowata, T. Chikowore, S.F. Mohamed, F. Sarfo, R. Akinyemi, A. Akpalu, K. Wahab, R. Obiako, M. Komolafe, L. Owolabi, G.O. Osaigbovo, G. Ogbale, H.K. Tiwari, J. Akinyemi, A. Fakunle, E. Uvere, A. Adeoye, D. Lackland, D.K. Arnett, B. Ovbiagele, M. Ramsay, and M. Owolabi, *Frequent vegetable consumption is inversely associated with Hypertension among indigenous Africans*. *Eur J Prev Cardiol*, 2022.
14. Diarz, E.J., B.J. Leyaro, S.L. Kivuyo, B.J. Ngowi, S.E. Msuya, S.G. Mfinanga, B. Bonfoh, and M.J. Mahande, *Red meat consumption and its association with hypertension and hyperlipidaemia among adult Maasai pastoralists of Ngorongoro Conservation Area, Tanzania*. *PLoS One*, 2020. **15**(6): p. e0233777.

15. Lebbie, A., R. Wadsworth, J. Saidu, and C. Bangura, *Predictors of Hypertension in a Population of Undergraduate Students in Sierra Leone*. *Int J Hypertens*, 2017. **2017**: p. 8196362.
16. Geleijnse, J.M., D.E. Grobbee, and F.J. Kok, *Impact of dietary and lifestyle factors on the prevalence of hypertension in Western populations*. *J Hum Hypertens*, 2005. **19 Suppl 3**: p. S1-4.
17. He, F.J., S. Pombo-Rodrigues, and G.A. Macgregor, *Salt reduction in England from 2003 to 2011: its relationship to blood pressure, stroke and ischaemic heart disease mortality*. *BMJ Open*, 2014. **4**(4): p. e004549.
18. Federal Ministry of Health, *National Nutritional Guideline On Non-Communicable Disease Prevention, Control and Management A*. Federal Ministry of Health, Editor. 2014. p. 62.
19. Ministry of Health, *Dietary and Physical Activity Guidelines for Ghana 2009*: p. 1-72.
20. Stroup, D.F., J.A. Berlin, S.C. Morton, I. Olkin, G.D. Williamson, D. Rennie, D. Moher, B.J. Becker, T.A. Sipe, and S.B. Thacker, *Meta-analysis of observational studies in epidemiology: a proposal for reporting. Meta-analysis Of Observational Studies in Epidemiology (MOOSE) group*. *JAMA*, 2000. **283**(15): p. 2008-12.
21. Shamseer, L., D. Moher, M. Clarke, D. Ghersi, A. Liberati, M. Petticrew, P. Shekelle, L.A. Stewart, and P.-P. Group, *Preferred reporting items for*

- systematic review and meta-analysis protocols (PRISMA-P) 2015: elaboration and explanation*. BMJ, 2015. **350**: p. g7647.
22. DistillerSR. Version 2.35. *DistillerSR Inc.* 2022 May-June 2022]; Available from: <https://www.distillersr.com/>.
23. Borenstein, M., L.V. Hedges, J.P.T. Higgins, and H.R. Rothstein, *Introduction to Meta-Analysis by Michael Borenstein*. International Statistical Review. Wiley Online Library, 2009. **77**(3): p. 478-479.
24. Raúl Herzog, M^a José Álvarez-Pasquin, Camino Díaz, José Luis Del Barrio, José Manuel Estrada, and Ángel Gil, *Are healthcare workers' intentions to vaccinate related to their knowledge, beliefs and attitudes? a systematic review*. BMC Public Health, 2013. **13**(154).
25. DerSimonian, R. and N. Laird, *Meta-analysis in clinical trials*. Control Clin Trials, 1986. **7**(3): p. 177-88.
26. Tobias, D.K., C. Zhang, J. Chavarro, K. Bowers, J. Rich-Edwards, B. Rosner, D. Mozaffarian, and F.B. Hu, *Prepregnancy adherence to dietary patterns and lower risk of gestational diabetes mellitus*. Am J Clin Nutr, 2012. **96**(2): p. 289-95.
27. IntHout, J., J.P. Ioannidis, and G.F. Borm, *The Hartung-Knapp-Sidik-Jonkman method for random effects meta-analysis is straightforward and considerably outperforms the standard DerSimonian-Laird method*. BMC Med Res Methodol, 2014. **14**: p. 25.

28. Jackson, D., M. Law, G. Rucker, and G. Schwarzer, *The Hartung-Knapp modification for random-effects meta-analysis: A useful refinement but are there any residual concerns?* Stat Med, 2017. **36**(25): p. 3923-3934.
29. Cochran, W.G., *The Combination of Estimates from Different Experiments*. Biometrics, 1954. **10**(1): p. 101-129.
30. Higgins, J.P. and S.G. Thompson, *Quantifying heterogeneity in a meta-analysis*. Stat Med, 2002. **21**(11): p. 1539-58.
31. Higgins, J.P., S.G. Thompson, J.J. Deeks, and D.G. Altman, *Measuring inconsistency in meta-analyses*. BMJ, 2003. **327**(7414): p. 557-60.
32. Begg, C.B. and M. Mazumdar, *Operating characteristics of a rank correlation test for publication bias*. Biometrics, 1994. **50**(4): p. 1088-101.
33. Sterne, J.A.C. and M. Egger, *Regression methods to detect publication and other bias in meta-analysis*. In H. R. Rothstein, A. J. Sutton, & M. Borenstein (Eds.), *Publication bias in meta-analysis: Prevention, assessment and adjustment 2005*: Wiley. 99-110.
34. Balduzzi, S., G. Rucker, and G. Schwarzer, *How to perform a meta-analysis with R: a practical tutorial*. Evid Based Ment Health, 2019. **22**(4): p. 153-160.
35. R Core Team, *A language and environment for statistical computing*. R Foundation for Statistical Computing. 2020, Vienna, Austria.

36. Wu, L., D. Sun, and Y. He, *Fruit and vegetables consumption and incident hypertension: dose-response meta-analysis of prospective cohort studies*. *J Hum Hypertens*, 2016. **30**(10): p. 573-80.
37. Schwingshackl, L., C. Schwedhelm, G. Hoffmann, S. Knuppel, K. Iqbal, V. Andriolo, A. Bechthold, S. Schlesinger, and H. Boeing, *Food Groups and Risk of Hypertension: A Systematic Review and Dose-Response Meta-Analysis of Prospective Studies*. *Adv Nutr*, 2017. **8**(6): p. 793-803.
38. Liu, R.H., *Health-promoting components of fruits and vegetables in the diet*. *Adv Nutr*, 2013. **4**(3): p. 384S-92S.
39. Verly, E., Jr., J. Steluti, R.M. Fisberg, and D.M. Marchioni, *A quantile regression approach can reveal the effect of fruit and vegetable consumption on plasma homocysteine levels*. *PLoS One*, 2014. **9**(11): p. e111619.
40. Chen, G.C., D.B. Lu, Z. Pang, and Q.F. Liu, *Vitamin C intake, circulating vitamin C and risk of stroke: a meta-analysis of prospective studies*. *J Am Heart Assoc*, 2013. **2**(6): p. e000329.
41. Ashworth, A., K. Mitchell, J.R. Blackwell, A. Vanhatalo, and A.M. Jones, *High-nitrate vegetable diet increases plasma nitrate and nitrite concentrations and reduces blood pressure in healthy women*. *Public Health Nutr*, 2015. **18**(14): p. 2669-78.
42. Tamai, Y., K. Wada, M. Tsuji, K. Nakamura, Y. Sahashi, K. Watanabe, K. Yamamoto, K. Ando, and C. Nagata, *Dietary intake of vitamin B12 and folic*

acid is associated with lower blood pressure in Japanese preschool children.

Am J Hypertens, 2011. **24**(11): p. 1215-21.

43. Helelo, T.P., Y.A. Gelaw, and A.A. Adane, *Prevalence and associated factors of hypertension among adults in Durame Town, Southern Ethiopia*. PLoS One, 2014. **9**(11): p. e112790.
44. Toh, J.Y., V.M. Tan, P.C. Lim, S.T. Lim, and M.F. Chong, *Flavonoids from fruit and vegetables: a focus on cardiovascular risk factors*. Curr Atheroscler Rep, 2013. **15**(12): p. 368.
45. Camoes, M., A. Oliveira, M. Pereira, M. Severo, and C. Lopes, *Role of physical activity and diet in incidence of hypertension: a population-based study in Portuguese adults*. Eur J Clin Nutr, 2010. **64**(12): p. 1441-9.
46. Whelton, P.K. and M.J. Klag, *Magnesium and blood pressure: review of the epidemiologic and clinical trial experience*. Am J Cardiol, 1989. **63**(14): p. 26G-30G.
47. Juraschek, S.P., E. Guallar, L.J. Appel, and E.R. Miller, 3rd, *Effects of vitamin C supplementation on blood pressure: a meta-analysis of randomized controlled trials*. Am J Clin Nutr, 2012. **95**(5): p. 1079-88.
48. Aburto, N.J., S. Hanson, H. Gutierrez, L. Hooper, P. Elliott, and F.P. Cappuccio, *Effect of increased potassium intake on cardiovascular risk factors and disease: systematic review and meta-analyses*. BMJ, 2013. **346**: p. f1378.

49. Subasinghe, A.K., S. Arabshahi, D. Busingye, R.G. Evans, K.Z. Walker, M.A. Riddell, and A.G. Thrift, *Association between salt and hypertension in rural and urban populations of low to middle income countries: a systematic review and meta-analysis of population based studies*. Asia Pac J Clin Nutr, 2016. **25**(2): p. 402-13.
50. Zhang, Y., X. Fan, S. Li, Y. Wang, S. Shi, H. Lu, F. Yan, and Y. Ma, *Prevalence and risk factors of hypertension among Hui population in China: A systematic review and meta-analysis based on 30,565 study participants*. Medicine (Baltimore), 2021. **100**(18): p. e25192.
51. Girardin, E., J. Caverzasio, J. Iwai, J.P. Bonjour, A.F. Muller, and A. Grandchamp, *Pressure natriuresis in isolated kidneys from hypertension-prone and hypertension-resistant rats (Dahl rats)*. Kidney Int, 1980. **18**(1): p. 10-9.
52. Grillo, A., L. Salvi, P. Coruzzi, P. Salvi, and G. Parati, *Sodium Intake and Hypertension*. Nutrients, 2019. **11**(9).
53. Guyton, A.C., *Blood pressure control--special role of the kidneys and body fluids*. Science, 1991. **252**(5014): p. 1813-6.
54. Marketou, M.E., S. Maragkoudakis, I. Anastasiou, H. Nakou, M. Plataki, P.E. Vardas, and F.I. Parthenakis, *Salt-induced effects on microvascular function: A critical factor in hypertension mediated organ damage*. J Clin Hypertens (Greenwich), 2019. **21**(6): p. 749-757.
55. O'Donnell, M., A. Mente, M.H. Alderman, A.J.B. Brady, R. Diaz, R. Gupta, P. Lopez-Jaramillo, F.C. Luft, T.F. Luscher, G. Mancia, J.F.E. Mann, D.

- McCarron, M. McKee, F.H. Messerli, L.L. Moore, J. Narula, S. Oparil, M. Packer, D. Prabhakaran, A. Schutte, K. Sliwa, J.A. Staessen, C. Yancy, and S. Yusuf, *Salt and cardiovascular disease: insufficient evidence to recommend low sodium intake*. Eur Heart J, 2020. **41**(35): p. 3363-3373.
56. Kurtz, T.W., S.E. DiCarlo, M. Pravenec, and R.C. Morris, Jr., *The American Heart Association Scientific Statement on salt sensitivity of blood pressure: Prompting consideration of alternative conceptual frameworks for the pathogenesis of salt sensitivity?* J Hypertens, 2017. **35**(11): p. 2214-2225.
57. Elijovich, F., M.H. Weinberger, C.A. Anderson, L.J. Appel, M. Bursztyn, N.R. Cook, R.A. Dart, C.H. Newton-Cheh, F.M. Sacks, C.L. Laffer, P. American Heart Association, H. Public Education Committee of the Council on, G. Council on Functional, B. Translational, and C. Stroke, *Salt Sensitivity of Blood Pressure: A Scientific Statement From the American Heart Association*. Hypertension, 2016. **68**(3): p. e7-e46.
58. Soriguer, F., G. Rojo-Martinez, M.C. Dobarganes, J.M. Garcia Almeida, I. Esteva, M. Beltran, M.S. Ruiz De Adana, F. Tinahones, J.M. Gomez-Zumaquero, E. Garcia-Fuentes, and S. Gonzalez-Romero, *Hypertension is related to the degradation of dietary frying oils*. Am J Clin Nutr, 2003. **78**(6): p. 1092-7.
59. Bhardwaj, S., S.J. Passi, and A. Misra, *Overview of trans fatty acids: biochemistry and health effects*. Diabetes Metab Syndr, 2011. **5**(3): p. 161-4.

60. Fillion, L. and C.J. Henry, *Nutrient losses and gains during frying: a review*. Int J Food Sci Nutr, 1998. **49**(2): p. 157-68.
61. Song, J., J. Park, J. Jung, C. Lee, S.Y. Gim, H. Ka, B. Yi, M.J. Kim, C.I. Kim, and J. Lee, *Analysis of Trans Fat in Edible Oils with Cooking Process*. Toxicol Res, 2015. **31**(3): p. 307-12.
62. Wang, L., J.E. Manson, J.P. Forman, J.M. Gaziano, J.E. Buring, and H.D. Sesso, *Dietary fatty acids and the risk of hypertension in middle-aged and older women*. Hypertension, 2010. **56**(4): p. 598-604.
63. Qin, P., Q. Li, Y. Zhao, Q. Chen, X. Sun, Y. Liu, H. Li, T. Wang, X. Chen, Q. Zhou, C. Guo, D. Zhang, G. Tian, D. Liu, R. Qie, M. Han, S. Huang, X. Wu, Y. Li, Y. Feng, X. Yang, F. Hu, D. Hu, and M. Zhang, *Sugar and artificially sweetened beverages and risk of obesity, type 2 diabetes mellitus, hypertension, and all-cause mortality: a dose-response meta-analysis of prospective cohort studies*. Eur J Epidemiol, 2020. **35**(7): p. 655-671.
64. Kang, Y. and J. Kim, *Association between fried food consumption and hypertension in Korean adults*. Br J Nutr, 2016. **115**(1): p. 87-94.
65. Qin, P., D. Liu, X. Wu, Y. Zeng, X. Sun, Y. Zhang, Y. Li, Y. Wu, M. Han, R. Qie, S. Huang, Y. Zhao, Y. Feng, X. Yang, Y. Liu, H. Li, M. Zhang, D. Hu, and F. Hu, *Fried-food consumption and risk of overweight/obesity, type 2 diabetes mellitus, and hypertension in adults: a meta-analysis of observational studies*. Crit Rev Food Sci Nutr, 2022. **62**(24): p. 6809-6820.

66. Zhang, Y. and D.Z. Zhang, *Red meat, poultry, and egg consumption with the risk of hypertension: a meta-analysis of prospective cohort studies*. *J Hum Hypertens*, 2018. **32**(7): p. 507-517.
67. Stamler, J., A. Caggiula, G.A. Grandits, M. Kjelsberg, and J.A. Cutler, *Relationship to blood pressure of combinations of dietary macronutrients. Findings of the Multiple Risk Factor Intervention Trial (MRFIT)*. *Circulation*, 1996. **94**(10): p. 2417-23.
68. Stamler, J., A.W. Caggiula, and G.A. Grandits, *Relation of body mass and alcohol, nutrient, fiber, and caffeine intakes to blood pressure in the special intervention and usual care groups in the Multiple Risk Factor Intervention Trial*. *Am J Clin Nutr*, 1997. **65**(1 Suppl): p. 338S-365S.
69. Stamler, J., K. Liu, K.J. Ruth, J. Pryer, and P. Greenland, *Eight-year blood pressure change in middle-aged men: relationship to multiple nutrients*. *Hypertension*, 2002. **39**(5): p. 1000-6.
70. Stamler, J., D. Wentworth, and J.D. Neaton, *Is relationship between serum cholesterol and risk of premature death from coronary heart disease continuous and graded? Findings in 356,222 primary screenees of the Multiple Risk Factor Intervention Trial (MRFIT)*. *JAMA*, 1986. **256**(20): p. 2823-8.
71. Tuomainen, T.P., K. Nyyssonen, R. Salonen, A. Tervahauta, H. Korpela, T. Lakka, G.A. Kaplan, and J.T. Salonen, *Body iron stores are associated with serum insulin and blood glucose concentrations. Population study in 1,013 eastern Finnish men*. *Diabetes Care*, 1997. **20**(3): p. 426-8.

72. Fernandez-Real, J.M., W. Ricart-Engel, E. Arroyo, R. Balanca, R. Casamitjana-Abella, D. Cabrero, M. Fernandez-Castaner, and J. Soler, *Serum ferritin as a component of the insulin resistance syndrome*. *Diabetes Care*, 1998. **21**(1): p. 62-8.
73. Hua, N.W., R.A. Stoohs, and F.S. Facchini, *Low iron status and enhanced insulin sensitivity in lacto-ovo vegetarians*. *Br J Nutr*, 2001. **86**(4): p. 515-9.
74. Wang, Y., S. Chen, T. Yao, D. Li, Y. Wang, Y. Li, S. Wu, and J. Cai, *Homocysteine as a risk factor for hypertension: a 2-year follow-up study*. *PLoS One*, 2014. **9**(10): p. e108223.
75. Koeth, R.A., Z. Wang, B.S. Levison, J.A. Buffa, E. Org, B.T. Sheehy, E.B. Britt, X. Fu, Y. Wu, L. Li, J.D. Smith, J.A. DiDonato, J. Chen, H. Li, G.D. Wu, J.D. Lewis, M. Warrier, J.M. Brown, R.M. Krauss, W.H. Tang, F.D. Bushman, A.J. Lusis, and S.L. Hazen, *Intestinal microbiota metabolism of L-carnitine, a nutrient in red meat, promotes atherosclerosis*. *Nat Med*, 2013. **19**(5): p. 576-85.
76. Yuan, S., H.J. Yu, M.W. Liu, B.W. Tang, J. Zhang, D. Gasevic, S.C. Larsson, and Q.Q. He, *Fat Intake and Hypertension Among Adults in China: The Modifying Effects of Fruit and Vegetable Intake*. *Am J Prev Med*, 2020. **58**(2): p. 294-301.
77. Ofili, M.I., B.P. Ncama, and B. Sartorius, *Hypertension in rural communities in Delta State, Nigeria: Prevalence, risk factors and barriers to health care*. *Afr J Prim Health Care Fam Med*, 2015. **7**(1): p. 875.

78. Kingsley Boakye, Comfort Arthur, and Augustine Amissah, *Prevalence of Hypertension among Adult Residents of Selected Communities in Tano North District in Ahafo Region, Ghana*. Public Health Research, 2019. **9**(2): p. 30-38.
79. Soubeiga, J.K., T. Millogo, B.W. Bicaba, B. Doulougou, and S. Kouanda, *Prevalence and factors associated with hypertension in Burkina Faso: a countrywide cross-sectional study*. BMC Public Health, 2017. **17**(1): p. 64.
80. Akoklannou A. H, P.K. Yanogo, Kabor Ñ. J., Bokossa A., Sawadogo B., Antara S., Houinato D., and Meda N., *Hypertension and associated factors in Atlantic region of Benin in 2015: A community-based study*. Journal of Public Health and Epidemiology, 2020. **12**(1): p. 1-7.
81. Light, K.C., S.S. Girdler, A. Sherwood, E.E. Bragdon, K.A. Brownley, S.G. West, and A.L. Hinderliter, *High stress responsivity predicts later blood pressure only in combination with positive family history and high life stress*. Hypertension, 1999. **33**(6): p. 1458-64.
82. Jennings, J.R., T.W. Kamarck, S.A. Everson-Rose, G.A. Kaplan, S.B. Manuck, and J.T. Salonen, *Exaggerated blood pressure responses during mental stress are prospectively related to enhanced carotid atherosclerosis in middle-aged Finnish men*. Circulation, 2004. **110**(15): p. 2198-203.
83. Vogel, R.A., M.C. Corretti, and G.D. Plotnick, *Effect of a single high-fat meal on endothelial function in healthy subjects*. Am J Cardiol, 1997. **79**(3): p. 350-4.
84. Roerecke, M., S.W. Tobe, J. Kaczorowski, S.L. Bacon, A. Vafaei, O.S.M. Hasan, R.J. Krishnan, A.O. Raifu, and J. Rehm, *Sex-Specific Associations*

- Between Alcohol Consumption and Incidence of Hypertension: A Systematic Review and Meta-Analysis of Cohort Studies.* J Am Heart Assoc, 2018. **7**(13).
85. Oparil, S., M.A. Zaman, and D.A. Calhoun, *Pathogenesis of hypertension.* Ann Intern Med, 2003. **139**(9): p. 761-76.
86. Puddey, I.B., T.A. Mori, A.E. Barden, and L.J. Beilin, *Alcohol and Hypertension-New Insights and Lingering Controversies.* Curr Hypertens Rep, 2019. **21**(10): p. 79.
87. Tsuji, S., S. Kawano, T. Michida, E. Masuda, K. Nagano, Y. Takei, H. Fusamoto, and T. Kamada, *Ethanol stimulates immunoreactive endothelin-1 and -2 release from cultured human umbilical vein endothelial cells.* Alcohol Clin Exp Res, 1992. **16**(2): p. 347-9.
88. Husain, K., L. Ferder, R.A. Ansari, and J. Lalla, *Chronic ethanol ingestion induces aortic inflammation/oxidative endothelial injury and hypertension in rats.* Hum Exp Toxicol, 2011. **30**(8): p. 930-9.
89. WHO, *Diet, nutrition and the prevention of chronic diseases*, in *WHO Technical Report Series*, , r.o.a.J.W.F.E. Consultation, Editor. 2003.
90. Mozaffarian, D., S. Fahimi, G.M. Singh, R. Micha, S. Khatibzadeh, R.E. Engell, S. Lim, G. Danaei, M. Ezzati, J. Powles, N. Global Burden of Diseases, and G. Chronic Diseases Expert, *Global sodium consumption and death from cardiovascular causes.* N Engl J Med, 2014. **371**(7): p. 624-34.

91. WHO, *Guideline: Sodium Intake for Adults and Children*, in *WHO Guidelines Approved by the Guidelines Review Committee*. 2012: Geneva.
92. WHO. *Healthy diet*. 2018–2022, December 28]; Available from: <http://www.who.int/mediacentre/factsheets/fs394/en/>.
93. World Cancer Research Fund. *Diet, nutrition, physical activity and cancer: A global perspective. Continuous update project expert report 2018*. 2018 [cited 2022, December 28; Available from: <https://www.wcrf.org/diet-activity-and-cancer/cancer-prevention-recommendations/limit-red-and-processed-meat/>.
94. Astrup, A., H.C. Bertram, J.P. Bonjour, L.C. de Groot, M.C. de Oliveira Otto, E.L. Feeney, M.L. Garg, I. Givens, F.J. Kok, R.M. Krauss, B. Lamarche, J.M. Lecerf, P. Legrand, M. McKinley, R. Micha, M.C. Michalski, D. Mozaffarian, and S.S. Soedamah-Muthu, *WHO draft guidelines on dietary saturated and trans fatty acids: time for a new approach?* *BMJ*, 2019. **366**: p. 14137.

Supplementary References

1. Anto, E.O., W. Owiredu, E. Adua, C. Obirikorang, L.A. Fondjo, M.E. Annani-Akollor, E. Acheampong, E.A. Asamoah, P. Roberts, W. Wang, and S. Donkor, *Prevalence and lifestyle-related risk factors of obesity and unrecognized hypertension among bus drivers in Ghana*. *Heliyon*, 2020. **6**(1): p. e03147.
2. Sackou, J.K., M.L. Tiade, A.A. Hounsa, S.K. Malik, M. Coulibaly, A.A. Desquith, F.K. Kadjo, S.A. Agoua, S. Oga, and L.K. Kouadio, *Prevalence and*

- factors associated with hypertension in Anonkoi 3, a peri-urban area in Abidjan (Cote d'Ivoire)*. J Public Health Afr, 2019. **10**(2): p. 1106.
3. Ugwuja, E., U. Ezenkwa, A. Nwibo, M. Ogbanshi, O. Idoko, and R. Nnabu, *Prevalence and determinants of hypertension in an agrarian rural community in southeast Nigeria*. Ann Med Health Sci Res, 2015. **5**(1): p. 45-9.
 4. Oguoma, V.M., E.U. Nwose, T.C. Skinner, R.S. Richards, and P.T. Bwititi, *Diet and lifestyle habits: Association with cardiovascular disease indices in a Nigerian sub-population*. Diabetes Metab Syndr, 2018. **12**(5): p. 653-659.
 5. Olawuyi, A.T. and I.A. Adeoye, *The prevalence and associated factors of non-communicable disease risk factors among civil servants in Ibadan, Nigeria*. PLoS One, 2018. **13**(9): p. e0203587.
 6. Acheampong, K., J.M. Nyamari, D. Ganu, S. Appiah, X. Pan, A. Kaminga, and A. Liu, *Predictors of Hypertension among Adult Female Population in Kpone-Katamanso District, Ghana*. Int J Hypertens, 2019. **2019**: p. 1876060.
 7. Obasohan, P.E., J.N. Okorie, A.L. Sule, and K.J. Ndako, *Impact of dietary patterns, individual and workplace characteristics on blood pressure status among civil servants in Bida and Wushishi communities of Niger State, Nigeria*. PLoS One, 2019. **14**(12): p. e0226231.

8. Menyanu, E., K.E. Charlton, L.J. Ware, J. Russell, R. Biritwum, and P. Kowal, *Salt Use Behaviours of Ghanaians and South Africans: A Comparative Study of Knowledge, Attitudes and Practices*. *Nutrients*, 2017. **9**(9).
9. Desormais, I., S.A. Amidou, Y.C. Houehanou, S.D. Houinato, G.N. Gbagouidi, P.M. Preux, V. Aboyans, and P. Lacroix, *The prevalence, awareness, management and control of hypertension in men and women in Benin, West Africa: the TAHES study*. *BMC Cardiovasc Disord*, 2019. **19**(1): p. 303.
10. Simo, L.P., V.N. Agbor, J.J.N. Noubiap, O.P. Nana, P.S. Nkosu, A.F.A. Anouboweh, J.N. Ndi, J.N. Mbock, N.F. Bakari, H.G.G. Tambou, and D. Mbanya, *Hypertension prevalence, associated factors, treatment and control in rural Cameroon: a cross-sectional study*. *BMJ Open*, 2020. **10**(9): p. e040981.
11. Ofili, M.I., B.P. Ncama, and B. Sartorius, *Hypertension in rural communities in Delta State, Nigeria: Prevalence, risk factors and barriers to health care*. *Afr J Prim Health Care Fam Med*, 2015. **7**(1): p. 875.
12. Nkondjock, A. and E. Bizome, *Dietary patterns associated with hypertension prevalence in the Cameroon defence forces*. *Eur J Clin Nutr*, 2010. **64**(9): p. 1014-21.
13. Pancha Mbouemboue, O., D. Derew, J.O. Tsougmo, and M. Tangyi Tamanji, *A Community-Based Assessment of Hypertension and Some Other Cardiovascular Disease Risk Factors in Ngaoundere, Cameroon*. *Int J Hypertens*, 2016. **2016**: p. 4754636.

14. Charity E. C, Osaretin A.T. E, Janet N.A. A, and Adedeji H. S. O, *Anthropometric, socio-demographic and biochemical risk factors of hypertension in Lagos, Nigeria*. Alexandria Journal of Medicine,, 2021. **57**(1): p. 44-51.
15. Oladoyinbo, C.A., A.M. Abiodun, M.O. Oyalowo, I. Obaji, A.M. Oyelere, O.O. Akinbule, and A.A. Sobo, *Risk factors for diabetes mellitus and hypertension among artisans in Ogun state, Nigeria*. Nutrition & Food Science, 2020. **50**(4): p. 695-710.
16. Ayogu, R.N.B., M.G. Ezeh, and A.M. Okafor, *Prevalence and predictors of different patterns of hypertension among adults aged 20-60 years in rural communities of Southeast Nigeria: a cross-sectional study*. Arch Public Health, 2021. **79**(1): p. 210.
17. Ayogu, R.N.B. and C.J. Nwodo, *Epidemiological characteristics of hypertension, impaired fasting capillary glucose and their comorbidity: a retrospective cross-sectional population-based study of rural adolescents in Southeast Nigeria*. BMJ Open, 2021. **11**(5): p. e041481.
18. Akoklannou A. H, P.K. Yanogo, Kabor Ñ. J., Bokossa A., Sawadogo B., Antara S., Houinato D., and Meda N., *Hypertension and associated factors in Atlantic region of Benin in 2015: A community-based study*. Journal of Public Health and Epidemiology, 2020. **12**(1): p. 1-7.

19. Soubeiga, J.K., T. Millogo, B.W. Bicaba, B. Doulogou, and S. Kouanda, *Prevalence and factors associated with hypertension in Burkina Faso: a countrywide cross-sectional study*. BMC Public Health, 2017. **17**(1): p. 64.
20. Yayehd, K., F. Damorou, R. Akakpo, T. Tcherou, N.W. N'Da, S. Pessinaba, L. Belle, and A. Johnson, [*Prevalence and determinants of hypertension in Lome (Togo): results of a screening in May 2011*]. Ann Cardiol Angeiol (Paris), 2013. **62**(1): p. 43-50.
21. Colette A., Charles S. J., Rosemonde K., Makoutode P., SGhislain S.E., Noël M. Paraïso, Yolaine G. A., and Edgard-Marius O., *The prevalence of high blood pressure and its relationship with sociodemographic, anthropometric and lifestyles indicators: A population-based study in Aplahoue health district, Benin*. Universal Journal of Public Health, 2020. **8**(2): p. 65-72.
22. Shokunbi, O.S. and N.A. Ukangwa, *Relationship of blood pressure status, dietary factors and serum electrolytes of in-school adolescents in Ilishan-Remo, Ogun State, Nigeria*. Afr Health Sci, 2021. **21**(4): p. 1754-1763.
23. Kingsley Boakye, Comfort Arthur, and Augustine Amissah, *Prevalence of Hypertension among Adult Residents of Selected Communities in Tano North District in Ahafo Region, Ghana*. Public Health Research, 2019. **9**(2): p. 30-38.
24. Owiredu, E.W., E. Dontoh, S.E.S. Essuman, and B.B. Bazanfara, *Demographic and Lifestyle Predictors of Prehypertension: A Cross-Sectional Study among*

- Apparently Healthy Adults in Kumasi, Ghana*. Biomed Res Int, 2019. **2019**: p. 1764079.
25. Dorgbetor, C.I., K.S. Dickson, E. Kwabena Ameyaw, and K. Setorwu Adde, *Prevalence and Associated Factors of Hypertension among Women in Southern Ghana: Evidence from 2014 GDHS*. Int J Hypertens, 2022. **2022**: p. 9700160.
26. Diendere, J., J. Kabore, W.K. Bosu, J.W. Some, F. Garanet, P.V. Ouedraogo, A.A. Savadogo, A. Millogo, and A.N. Zeba, *A comparison of unhealthy lifestyle practices among adults with hypertension aware and unaware of their hypertensive status: results from the 2013 WHO STEPS survey in Burkina Faso*. BMC Public Health, 2022. **22**(1): p. 1601.
27. Modey Amoah, E., D. Esinam Okai, A. Manu, A. Laar, J. Akamah, and K. Torpey, *The Role of Lifestyle Factors in Controlling Blood Pressure among Hypertensive Patients in Two Health Facilities in Urban Ghana: A Cross-Sectional Study*. Int J Hypertens, 2020. **2020**: p. 9379128.
28. Akpa, O.M., A.P. Okekunle, O.J. Asowata, T. Chikowore, S.F. Mohamed, F. Sarfo, R. Akinyemi, A. Akpalu, K. Wahab, R. Obiako, M. Komolafe, L. Owolabi, G.O. Osaigbovo, G. Ogbale, H.K. Tiwari, J. Akinyemi, A. Fakunle, E. Uvere, A. Adeoye, D. Lackland, D.K. Arnett, B. Ovbiagele, M. Ramsay, and M. Owolabi, *Frequent vegetable consumption is inversely associated with Hypertension among indigenous Africans*. Eur J Prev Cardiol, 2022.

29. Makinde, Y.O. and D.A. Babalola, *Diet And Hypertension: A Comparative Analysis Of Four Diet Groups In South-Western Nigeria*. African Journal of Food, Agriculture, Nutrition and Development, 2011. **11**(1).

30. Oyekale, A.S., *Effect of Obesity and Other Risk Factors on Hypertension among Women of Reproductive Age in Ghana: An Instrumental Variable Probit Model*. Int J Environ Res Public Health, 2019. **16**(23).

Supplementary material

Table S1: Search strategy used in PubMed database.

Table S2: Characteristics of included studies.

Table S3: Quality assessment and ROB of included studies.

Table S4: PRISMA-P checklist: for dietary factors and hypertension in West Africa.

Figures S1–S18: Subgroup analysis and funnel plots investigating heterogeneity.