

1 **Performance of Rapid Antigen Tests Based on Symptom Onset and Close Contact**
2 **Exposure: A secondary analysis from the Test Us At Home prospective cohort study**

3 Authors: Carly Herbert BA¹, Biqi Wang PhD^{1,2}, Honghuang Lin^{1,2}, Nathaniel Hafer³, Caitlin Pretz
4 MS¹, Pamela Stamegna¹, Seanan Tarrant BA¹, Paul Hartin BS¹, Julia Ferranto BS¹, Stephanie
5 Behar BA¹, Colton Wright MS¹, Taylor Orwig BS¹, Thejas Suvarna BBA, BS⁴, Emma Harman
6 MPH⁴, Summer Schrader BA⁴, Chris Nowak BA⁴, Vik Kheterpal MD⁴, Elizabeth Orvek MS⁵,
7 Steven Wong BA, Adrian Zai MD, PhD, Bruce Barton PhD², Ben Gerber MD, MPH⁵, Stephenie
8 C Lemon PhD², Andreas Filippaios MD¹, Kylie D'Amore¹, Laura Gibson MD, Sharone Greene
9 MD, Sakeina Howard-Wilson DO¹, Andres Colubri PhD⁶, Chad Achenbach MD, MPH⁷, Robert
10 Murphy MD⁷, William Heetderks PhD⁸, Yukari C Manabe MD⁹, Laurel O'Connor MD¹⁰, Nisha
11 Fahey DO, ScM^{1,5,11}, Katherine Luzuriaga MD^{3,12}, John Broach MD, MPH, MBA¹⁰, David D
12 McManus MD, ScM^{1,2,13}, Apurv Soni MD, PhD^{1,2,5}

13

14 Affiliations:

15 ¹Program in Digital Medicine, Department of Medicine, University of Massachusetts Chan
16 Medical School, Worcester, MA, USA

17 ²Division of Health System Science, Department of Medicine, University of Massachusetts Chan
18 Medical School, Worcester, MA, USA

19 ³University of Massachusetts Center for Clinical and Translational Science, University of
20 Massachusetts Chan Medical School, Worcester, MA, USA

21 ⁴CareEvolution, LLC, Ann Arbor, MI, USA

22 ⁵Department of Population and Quantitative Health Sciences, University of Massachusetts Chan
23 Medical School, Worcester, MA, USA

24 ⁶Department of Microbiology and Physiological Systems, University of Massachusetts Chan
25 Medical School, Worcester, MA, USA

26 ⁷Division of Infectious Disease, Department of Medicine, Havey Institute for Global Health,
27 Feinberg School of Medicine, Northwestern University, Chicago, IL, USA

28 ⁸National Institute of Biomedical Imaging and Bioengineering, NIH, via contract with Kelly
29 Services, Bethesda, MD, USA

30 ⁹Division of Infectious Disease, Department of Medicine, Johns Hopkins University School of
31 Medicine, Baltimore, MD, USA

32 ¹⁰Department of Emergency Medicine, University of Massachusetts Chan Medical School,
33 Worcester, MA, USA

34 ¹¹Department of Pediatrics, University of Massachusetts Chan Medical School, Worcester, MA,
35 USA

36 ¹²Program in Molecular Medicine, University of Massachusetts Chan Medical School,
37 Worcester, MA, USA

38 ¹³Division of Cardiology, Department of Medicine, University of Massachusetts Chan Medical
39 School, Worcester, MA, USA

40

41 Corresponding author:

42 Apurv Soni, MD PhD
43 55 Lake Avenue North
44 Worcester, MA 01605
45 Apurv.soni@umassmed.edu

46

47

48

49

50

51

52

53

54

55

56

57

58

59

60

61

62

63

64

65

66

67 **Abstract**

68 **Background:** The performance of rapid antigen tests for SARS-CoV-2 (Ag-RDT) in temporal
69 relation to symptom onset or exposure is unknown, as is the impact of vaccination on this
70 relationship.

71 **Objective:** To evaluate the performance of Ag-RDT compared with RT-PCR based on day after
72 symptom onset or exposure in order to decide on 'when to test'.

73 **Design, Setting, and Participants:** The Test Us at Home study was a longitudinal cohort study
74 that enrolled participants over 2 years old across the United States between October 18, 2021
75 and February 4, 2022. All participants were asked to conduct Ag-RDT and RT-PCR testing
76 every 48 hours over a 15-day period. Participants with one or more symptoms during the study
77 period were included in the Day Post Symptom Onset (DPSO) analyses, while those who
78 reported a COVID-19 exposure were included in the Day Post Exposure (DPE) analysis.

79 **Exposure:** Participants were asked to self-report any symptoms or known exposures to SARS-
80 CoV-2 every 48-hours, immediately prior to conducting Ag-RDT and RT-PCR testing. The first
81 day a participant reported one or more symptoms was termed DPSO 0, and the day of exposure
82 was DPE 0. Vaccination status was self-reported.

83
84 **Main Outcome and Measures:** Results of Ag-RDT were self-reported (positive, negative, or
85 invalid) and RT-PCR results were analyzed by a central laboratory. Percent positivity of SARS-
86 CoV-2 and sensitivity of Ag-RDT and RT-PCR by DPSO and DPE were stratified by vaccination
87 status and calculated with 95% confidence intervals.

88 **Results:** A total of 7,361 participants enrolled in the study. Among them, 2,086 (28.3%) and 546
89 (7.4%) participants were eligible for the DPSO and DPE analyses, respectively. Unvaccinated
90 participants were nearly twice as likely to test positive for SARS-CoV-2 than vaccinated
91 participants in event of symptoms (PCR+: 27.6% vs 10.1%) or exposure (PCR+: 43.8% vs.
92 22.2%). The highest proportion of vaccinated and unvaccinated individuals tested positive on
93 DPSO 2 and DPE 5-8. Performance of RT-PCR and Ag-RDT did not differ by vaccination
94 status. Ag-RDT detected 78.0% (95% Confidence Interval: 72.56-82.61) of PCR-confirmed
95 infections by DPSO 4. For exposed participants, Ag-RDT detected 84.9% (95% CI: 75.0-91.4) of
96 PCR-confirmed infections by day five post-exposure (DPE 5).

97 **Conclusions and Relevance:** Performance of Ag-RDT and RT-PCR was highest on DPSO 0-2
98 and DPE 5 and did not differ by vaccination status. These data suggests that serial testing
99 remains integral to enhancing the performance of Ag-RDT.

100

101

102

103

104

105

106

107

108

109 **Introduction:**

110 Rapid antigen tests (Ag-RDTs) are commonly used to diagnose COVID-19 due to their
111 availability over-the-counter for home use, relatively low cost, and ability to return results in 15-
112 20 minutes.¹⁻³ Previous work has informed the FDA guidance on *testing frequency* to minimize
113 the risk of false negative tests in symptomatic as well as asymptomatic individuals.⁴ However,
114 important questions remain about *when to begin testing*, particularly among those with
115 symptoms or after close contact with an infected person.^{4,5} Similarly, our understanding of Ag-
116 RDT performance by time past exposure is limited.⁶⁻⁸ Understanding Ag-RDT performance
117 change over the symptom course and in relation to SARS-CoV-2 exposure is crucial to guide
118 optimal use of diagnostics for risk assessment.

119 Several prior studies have examined Ag-RDT performance when used serially, but
120 these studies predate the arrival of the Omicron variants in the United States and widespread
121 vaccination coverage.^{9,10} Currently, approximately four in every five U.S. adults have received at
122 least one dose of a SARS-CoV-2 vaccine.¹¹ Vaccination has been associated with changes in
123 the signs and symptoms of SARS-CoV-2 infection, including fewer symptoms and a higher
124 likelihood of asymptomatic infections.¹² The performance of molecular diagnostics, including
125 reverse transcriptase polymerase chain reaction (RT-PCR), and Ag-RDTs is closely related to
126 detectable viral load; therefore, it is important to determine whether changes in viral dynamics
127 and symptomology due to vaccination have an impact on diagnostic performance.

128 Using data from Test Us at Home, a prospective cohort study that enrolled participants
129 from throughout the United States, we examined paired serial Ag-RDT and molecular testing to
130 determine how relative sensitivities of Ag-RDT and RT-PCR tests vary by day past symptom
131 onset and exposure and how these findings vary based on vaccination status. The results of this
132 study will inform pragmatic use of Ag-RDT at-home tests to detect SARS-CoV-2.

133 **Methods:**

134 **Study Population:**

135 In this analysis, we used data from the Test Us at Home study, a longitudinal cohort study that
136 evaluated the performance of serial use of Ag-RDTs for detection of COVID-19 among
137 asymptomatic individuals.⁴ The Test Us at Home study enrolled participants ages 2 years and
138 older across the United States between October 18, 2021 and February 4, 2022. This study was
139 approved by the WIRB-Copernicus Group (WCG) Institutional Review Board (20214875). Only
140 participants who completed at least one Ag-RDT or RT-PCR were included in this analysis.
141 Participants were included in the Day Post Symptom Onset (DPSO) analyses if they self-
142 reported any symptoms during the study period (Figure 1). Participants who had a RT-PCR+
143 result more than 14 days before or after symptom onset were excluded, as these symptoms
144 were assumed to be unrelated to the observed infection.¹³ Participants who reported
145 experiencing a COVID-19 exposure during the study were included in the Day Post Exposure
146 (DPE) analysis. Participants with an index RT-PCR+ result more than 14 days after the reported
147 exposure were excluded from the DPE analyses.

148 All Test Us at Home participants were asked to conduct Ag-RDT and RT-PCR testing every 2
149 days over a 15-day period. Participants were asked if they had any symptoms in the last 48
150 hours or any known exposures to SARS-CoV-2 at the beginning of each testing session. During
151 each testing session, two anterior nasal swabs were collected by the participant; one swab was
152 used for performing an Ag-RDT at home, while the other swab was sent to a central laboratory
153 for RT-PCR testing. All study activities and questionnaires were conducted through a custom
154 study app. Additional details about the study design, protocol, and participants are described
155 elsewhere.^{4,14}

156 **Measures:**

157 **Symptoms:** Participants self-reported symptoms (fever, body aches, fatigue, rash, nausea,
158 abdominal pain, diarrhea, loss of smell, runny nose, cough, headache, or other) during each
159 testing period immediately prior to using the Ag-RDT (every 48 hours). The first day that a
160 participant reported 1 or more symptoms was termed DPSO 0.

161 **Close-Contact Exposure:** Participants self-reported close-contact exposures to COVID-19 at
162 the time of baseline study enrollment and before each testing period. An exposure was defined
163 as being within 6 feet of an infected person without a mask for at least 15 minutes over a 24-
164 hour period. DPE 0 was defined as the first day of the reported exposure.

165 **Vaccination Status and Previous Infections:** Vaccination status and history of previous
166 SARS-CoV-2 infection was self-reported during the enrollment survey. Vaccination status was
167 operationalized into two groups: vaccinated (≥ 1 dose) and unvaccinated (0 doses). Previous
168 infections with SARS-CoV-2 were self-reported.

169 **Molecular Testing (RT-PCR):** Molecular comparator RT-PCR results were based on a
170 combination of molecular test results for the detection of SARS-Cov-2 infection.⁴ Cycle
171 threshold (Ct) values for the E-gene from RT-PCR were used to quantify viral load.

172 **Rapid antigen test positivity:** Participants were asked to provide an interpretation of each Ag-
173 RDT (positive, negative, or invalid) and upload a picture of the test result to the study app. All
174 self-reported positive tests were confirmed by study coordinators using the uploaded images.

175 **Data Analysis:** Percent positivity and cumulative positivity of all symptomatic and/or exposed
176 participants were calculated for RT-PCR and Ag-RDT by DPSO and DPE and stratified by
177 vaccination status with 95% confidence intervals using Wilson's method.¹⁵ Cumulative positivity
178 was defined as the number of participants with at least one positive test result over the number
179 of participants who had taken at least one test until each DPSO and DPE. Sensitivity analysis
180 was performed to assess whether findings differed between partially vaccinated (1 dose) and

181 fully vaccinated (2+ doses) participants. All analyses were conducted using R software package
182 version 4.2.1.

183 **Results:**

184 *Characteristics of Symptomatic and Exposed Participants*

185 A total of 2,086 of the 7,361 total Test Us At Home participants (28.3%) reported symptoms
186 associated with COVID-19 infection and were eligible for the DPSO analysis; 546 participants
187 reported a close-contact exposure and were eligible for the DPE analysis (Figure 1).
188 Approximately 10% of vaccinated and 20% of unvaccinated participants reported at least one
189 previous SARS-CoV-2 infection (Table 1). Participants less than 18 years old comprised 36.9%
190 and 47.6% of unvaccinated participants in the DPSO and DPE analyses, respectively, while
191 they comprised 7.2% and 10.6% of vaccinated individuals. The majority of vaccinated
192 participants (1677, 93.8%) had received 2+ doses of a SARS-CoV-2 vaccine.

193 *Percent Positivity of Ag-RDT and Molecular Tests by Day Past Symptom Onset among* 194 *Vaccinated and Unvaccinated Individuals*

195 Among 2,086 participants that reported at least one symptom, 12.5% tested positive by RT-PCR
196 during the study (Table 1; Supplemental Figure 1a). Significantly fewer symptomatic vaccinated
197 participants tested positive for SARS-CoV-2 during the study period compared to unvaccinated
198 participants (Unvaccinated: PCR+: 27.6% vs Vaccinated PCR+: 10.1%; Unvaccinated Ag-
199 RDT+: 25.3% vs. Vaccinated Ag-RDT+: 10.9%) (Supplemental Figure 1b). Trends were similar
200 among those who were fully vaccinated (2+ doses) and partially vaccinated (1 dose)
201 (Supplemental Figure 1c). The highest proportion of vaccinated and unvaccinated symptomatic
202 individuals tested positive on DPSO 2 (Figure 2a, 2b).

203 *Percent positivity of Rapid Antigen Tests and Molecular Tests by Day Past Exposure among* 204 *Vaccinated and Unvaccinated Individuals*

205 Of the 546 participants who reported a close-contact exposure during the study, 17.6% tested
206 positive by RT-PCR (Table 1; Supplemental Figure 1d). More than 50% of vaccinated and
207 unvaccinated individuals with close contact exposures also reported COVID-related symptoms
208 during the study (Table 1). Exposed unvaccinated participants tested positive for SARS-CoV-2
209 twice as often than exposed vaccinated participants, on both RT-PCR and Ag-RDT
210 (Unvaccinated PCR+: 43.8% vs. Vaccinated PCR+: 22.2%; Unvaccinated Ag-RDT+: 44.3% vs
211 Vaccinated Ag-RDT+: 23.4%) (Supplemental Figure 1e). The cumulative positivity of exposed
212 participants was conditioned on symptom status, such that exposed individuals with symptoms
213 were much more likely to test positive within the first week since exposure (\leq DPE 6) than
214 participants who were exposed but did not have symptoms on the day of testing (Supplemental
215 Figure 2). Percent positivity was highest on DPE 5 through DPE 8, irrespective of vaccination or
216 symptom status (Figure 3a, 3b).

217 *Diagnostic Performance by Timing of Symptom Onset and Exposure*

218 We did not observe significant differences in the performance of RT-PCR and Ag-RDT by
219 vaccination status by DPSO or DPE (Figure 2, Figure 3), and Ct values did not differ
220 significantly between vaccinated and unvaccinated participants (Supplemental Figure 3). Among
221 both vaccinated and unvaccinated participants, Ct value was lowest (i.e., highest viral burden)
222 at DPSO 0-2 and DPE 5 (Supplemental Figure 3). Among symptomatic participants, RT-PCR
223 detected 81.6% (95% CI: 76.2-85.9) of all PCR-confirmed infections on DPSO 0, while Ag-RDT
224 detected 59.0% (95% CI: 52.9-64.8) of PCR-confirmed infections at this time (Figure 2c, 2d,
225 Supplemental Table 1). Ag-RDT detected 79.9% (95% CI: 73.4-85.1) of vaccinated PCR-
226 confirmed infections and 73.8% (95% CI: 63.2-82.1) of unvaccinated PCR-confirmed infections
227 by DPSO 4 (Figure 2c). For exposed participants, RT-PCR and Ag-RDT detected over 94.7%
228 (95% CI: 87.1-97.9) and 84.9% (95% CI: 75.0-91.4) of PCR-confirmed infections on day five
229 post-exposure (DPE 5), respectively (Figure 3c, 3d, Supplemental Table 2).

230 **Discussion:**

231 In this study, we report the performance of nasal-swab Ag-RDT and molecular testing by
232 time since symptom onset and time since exposure among individuals who were and were not
233 vaccinated against SARS-CoV-2. Our study highlights three important findings: 1) we report that
234 the real-world performance of Ag-RDT and RT-PCR peaked at DPSO 0-2 for symptomatic
235 individuals and on DPE 5 for exposed individuals; 2) we show that the performance of Ag-RDT
236 tests is similar among vaccinated and unvaccinated participants, likely because the viral peak
237 did not differ between these groups; and 3) we demonstrate real-world evidence that
238 participants who were vaccinated had significantly lower likelihood of testing positive on RT-
239 PCR or Ag-RDT after an exposure than those who were unvaccinated. Taken together, these
240 findings reinforce the importance of Ag-RDT tests for detection of SARS-CoV-2 virus and
241 highlight the need for serial testing after symptom onset or exposure, as well as indicate the
242 continued importance of vaccination.

243 As the pandemic enters its third year, use of COVID-19 diagnostics has shifted away
244 from general screening and mandated testing towards personal risk assessment, with most
245 people using Ag-RDT in response to acute symptoms or COVID-19 exposure.¹⁶ It is increasingly
246 important to advise individuals on the timing of Ag-RDT use, to facilitate accurate test
247 interpretation and minimize false-negative results. The present results reinforce the importance
248 of serial testing when individuals are either symptomatic or exposed to SARS-CoV-2, in line with
249 our previous recommendations (i.e., symptomatic individuals should perform two Ag-RDT 48
250 hours apart and asymptomatic individuals should perform three Ag-RDT 48 hours apart each).⁴
251 In case of symptoms, we recommend that individuals test with Ag-RDT on DPSO 2 and 4 to
252 minimize the risk of false negative results. Further, to decrease transmission of SARS-CoV-2,
253 individuals should isolate until DPE 4, regardless of a negative test result on DPE 2. For
254 symptomatic individuals in our study, close to 80% of PCR-confirmed infections were detected

255 by Ag-RDT by DPSO 4. Among exposed participants, Ag-RDT detected 5 in 6 PCR-confirmed
256 infections by DPE 5, regardless of symptomatic status. Few new cases of SARS-CoV-2 were
257 detected following DPE 6. These results were consistent among vaccinated and unvaccinated
258 participants and support the CDC recommendations to isolate for 5 days post-exposure.¹⁷ A
259 previous study of 225 individuals with PCR-confirmed SARS-CoV-2 infections similarly found
260 that RT-PCR had a positivity rate of approximately 60% on the day of illness onset (defined as
261 symptom onset among symptomatic individuals and first RT-PCR+ test among asymptomatic
262 individuals).¹⁰ However, these investigators found that PCR-positivity and Ag-RDT-positivity
263 peaked on day 3 and 4 past illness onset, which differs from our own results showing that that
264 diagnostic performance peaked on DPSO 0 and 2. The observed difference may be explained
265 by the emergence of new variants, as over 75% of infections in our study were due to the
266 Omicron variant, which has a shorter incubation period than all previous SARS-CoV-2
267 strains.^{18,19} This discrepancy between results emphasizes the importance of re-evaluation of
268 SARS-CoV-2 diagnostic performance and testing advisories as new SARS-CoV-2 variants
269 continue to arise.

270 To our knowledge, most studies evaluating treatment effects of vaccination for SARS-
271 CoV-2 has demonstrated vaccine's efficacy for preventing severe disease, hospitalization, and
272 death from COVID-19, but few have demonstrated efficacy for preventing infections. Previous
273 studies have been limited in their ability to determine the impact of vaccination on susceptibility
274 and transmission of COVID-19.²⁰⁻²² In our study, unvaccinated individuals exposed to SARS-
275 CoV-2 had nearly twice the likelihood of infection compared to exposed vaccinated individuals.
276 This finding indicates that SARS-CoV-2 vaccination may indeed prevent against infection
277 following exposure to the virus. This is especially noteworthy, as breakthrough infections due to
278 the Omicron variant have become common.²³ Our finding provides real-world data that is similar
279 to previous reports based on passive data collection through electronic medical records and

280 workplace studies, which suggest that even one dose of vaccination decreases the risk of
281 infection from SARS-CoV-2.^{24–26} In contrast to those studies, we account for both RT-PCR and
282 Ag-RDT results in this study, and all participants, regardless of vaccination status, used the
283 same diagnostics and procedures to screen for infection every 48 hours, which allowed for
284 rigorous evaluation of the efficacy of vaccination for preventing infection after exposure. It is
285 important to note that, among those who acquired infection, vaccination status did not affect RT-
286 PCR or Ag-RDT tests' sensitivity or viral dynamics, thus not requiring different testing strategies
287 based on vaccination status.

288 Despite differences in the rates of infection among vaccinated and unvaccinated
289 participants, once infected, peak viral load did not differ between vaccinated and unvaccinated
290 individuals, consistent with previous reports.^{27,28} This also helps to explain why we did not
291 observe a significant difference in performance of Ag-RDT among vaccinated and unvaccinated
292 individuals, as performance of Ag-RDTs is tightly correlated with viral load, with Ag-RDT
293 diagnostic performance showing major declines when Ct > 30.¹⁸ Vaccinated and unvaccinated
294 individuals did not differ in magnitude nor timing of viral load with relation to DPSO and DPE;
295 therefore, no differences in diagnostic performance would be expected. However, while
296 magnitude and timing of peak viral load did not differ between vaccinated and unvaccinated
297 individuals, previous studies have shown that the duration of infectiousness may differ, with
298 unvaccinated individuals showing prolonged infectiousness. Together, these results add to the
299 evidence that vaccination against SARS-CoV-2 may decrease the risk of subsequent infection,
300 but more studies are needed to understand the impact of vaccination on levels of
301 infectiousness, as a function of viral load, during SARS-CoV-2 infection.

302 **Study Strengths and Limitations:**

303 This is one of the first studies to analyze the diagnostic performance of RT-PCR and Ag-RDT
304 for COVID-19 based on days past acute symptom onset or exposure to an individual infected

305 with SARS-CoV-2. Our study assessed serial paired longitudinal data to evaluate the
306 performance of Ag-RDT and RT-PCR over the duration of infection using a large nationwide
307 sample of children and adults. This is also, to the best of our knowledge, the first study to
308 quantify time from exposure to Ag-RDT positivity.

309 Our study has limitations that need to be considered when interpreting our findings. Paired Ag-
310 RDT and RT-PCR testing, as well as symptom trackers, were completed by participants every
311 48-hours. Assessing diagnostic performance at a finer temporal resolution might be useful in
312 future studies. Symptoms, exposures, and Ag-RDT results were based on participant self-
313 report. However, all positive Ag-RDT results were verified by research coordinators using
314 images of the test strip that were uploaded by participants. In this analysis, we categorized
315 anyone who received 1 or more vaccines for SARS-CoV-2 as vaccinated due to sample size
316 limitations; therefore, there may be heterogeneity in the vaccine responses and immunity within
317 this group. However, sensitivity analyses showed that results were consistent when those with 1
318 vaccination dose and 2+ doses were examined separately.

319 **Conclusions:**

320 In conclusion, this study supports testing immediately after symptom onset and between 3-5
321 days after exposure for optimal detection of SARS-CoV2 virus. Our findings suggest that
322 vaccination prevents SARS-CoV-2 infection but does not affect the performance of Ag-RDT
323 or RT-PCR tests. Taken in sum, our results highlight the effectiveness of vaccination and serial
324 testing in the context of symptom onset or close contact as public health strategies to manage
325 transmission of SARS-CoV-2 virus.

326

327 **Competing Interest Statement:** VK is principal, and TS, SS, CN, and EH are employees of the
328 health care technology company CareEvolution, which was contracted to configure the
329 smartphone study app, provide operational and logistical support, and collaborate on overall
330 research approach. DDM reports consulting and research grants from Bristol-Myers Squibb and

331 Pfizer, consulting and research support from Fitbit, consulting and research support from
332 Flexcon, research grant from Boehringer Ingelheim, consulting from Avania, non-financial
333 research support from Apple Computer, consulting/other support from Heart Rhythm Society.
334 YCM has received tests from Quanterix, Becton-Dickinson, Ceres, and Hologic for research-
335 related purposes, consults for Abbott on subjects unrelated to SARS-CoV-2, and receives
336 funding support to Johns Hopkins University from miDiagnostics. LG is on a scientific advisory
337 board for Moderna on projects unrelated to SARS-CoV-2. AS receives non-financial support
338 from CareEvolution for collaborative research activities. Additional authors declare no financial
339 or non-financial competing interests.
340

341 **Funding Statement:** This study was funded by the NIH RADx Tech program under
342 3U54HL143541-02S2 and NIH CTSA grant UL1TR001453. The views expressed in this
343 manuscript are those of the authors and do not necessarily represent the views of the National
344 Institute of Biomedical Imaging and Bioengineering; the National Heart, Lung, and Blood
345 Institute; the National Institutes of Health, or the U.S. Department of Health and Human
346 Services. Salary support from the National Institutes of Health U54HL143541, R01HL141434,
347 R01HL137794, R61HL158541, R01HL137734, U01HL146382 (AS, DDM), U01AG068221 (HL),
348 U54EB007958-13 (YCM, MLR), AI272201400007C, UM1AI068613 (YCM), U54EB027049 and
349 U54EB027049-02S1 (CJA, RLM).

350 **Acknowledgment:** We are grateful to our study participants and to our collaborators from the
351 National Institute of Health (NIBIB and NHLBI) who provided scientific input into the design of
352 this study and interpretation of our results, but could not formally join as co-authors due to
353 institutional policies and to the Food and Drug Administration (Office of In Vitro Diagnostics and
354 Radiological Health) for their involvement in the primary TUAH study. We received meaningful
355 contributions from Drs. Bruce Tromberg, Jill Heemskerk, Felicia Qashu, Dennis Buxton, Erin
356 Iturriaga, Jue Chen, Andrew Weitz, and Krishna Juluru. We are thankful to county health
357 departments across the country who helped with recruitment for this siteless study by spreading
358 the word in their networks.

1. Crozier A, Rajan S, Buchan I, McKee M. Put to the test: Use of rapid testing technologies for Covid-19. *The BMJ*. 2021;372. doi:10.1136/bmj.n208
2. Peeling RW, Olliaro PL, Boeras DI, Fongwen N. Scaling up COVID-19 rapid antigen tests: promises and challenges. *Lancet Infect Dis*. 2021;21(9). doi:10.1016/S1473-3099(21)00048-7
3. Drain PK. Rapid Diagnostic Testing for SARS-CoV-2. *New England Journal of Medicine*. 2022;386(3):264-272. doi:10.1056/NEJMCP2117115
4. Soni A, Herbert C, Lin H, et al. Performance of Screening for SARS-CoV-2 using Rapid Antigen Tests to Detect Incidence of Symptomatic and Asymptomatic SARS-CoV-2 Infection: findings from the Test Us at Home prospective cohort study. *medRxiv*. Published online August 6, 2022:2022.08.05.22278466. doi:10.1101/2022.08.05.22278466
5. Brümmer LE, Katzenschlager S, Gaeddert M, et al. Accuracy of novel antigen rapid diagnostics for SARS-CoV-2: A living systematic review and meta-analysis. *PLoS Med*. 2021;18(8):e1003735-. <https://doi.org/10.1371/journal.pmed.1003735>
6. Torres I, Poujois S, Albert E, Colomina J, Navarro D. Evaluation of a rapid antigen test (Panbio™ COVID-19 Ag rapid test device) for SARS-CoV-2 detection in asymptomatic close contacts of COVID-19 patients. *Clinical Microbiology and Infection*. 2021;27(4):636.e1-636.e4. doi:10.1016/J.CMI.2020.12.022
7. Wu Y, Kang L, Guo Z, Liu J, Liu M, Liang W. Incubation Period of COVID-19 Caused by Unique SARS-CoV-2 Strains A Systematic Review and Meta-analysis Key Points + Supplemental content. *JAMA Netw Open*. 2022;5(8):2228008. doi:10.1001/jamanetworkopen.2022.28008
8. Robinson ML, Mirza A, Gallagher N, et al. Limitations of Molecular and Antigen Test Performance for SARS-CoV-2 in Symptomatic and Asymptomatic COVID-19 Contacts. *J Clin Microbiol*. 2022;60(7). doi:10.1128/JCM.00187-22/SUPPL_FILE/JCM.00187-22-S0001.PDF
9. Smith RL, Gibson LL, Martinez PP, et al. Longitudinal Assessment of Diagnostic Test Performance Over the Course of Acute SARS-CoV-2 Infection. *J Infect Dis*. 2021;224(6):976-982. doi:10.1093/infdis/jiab337
10. Chu VT, Schwartz NG, Donnelly MAP, et al. Comparison of Home Antigen Testing With RT-PCR and Viral Culture During the Course of SARS-CoV-2 Infection. *JAMA Intern Med*. 2022;182(7):701-709. doi:10.1001/jamainternmed.2022.1827
11. Vaccines for COVID-19 | CDC. Accessed October 13, 2022. <https://www.cdc.gov/coronavirus/2019-ncov/vaccines/index.html>
12. Antonelli M, Penfold RS, Merino J, et al. Risk factors and disease profile of post-vaccination SARS-CoV-2 infection in UK users of the COVID Symptom Study app: a prospective, community-based, nested, case-control study. *Lancet Infect Dis*. 2022;22(1):43-55. doi:10.1016/S1473-3099(21)00460-6
13. Lauer SA, Grantz KH, Bi Q, et al. The Incubation Period of Coronavirus Disease 2019 (COVID-19) From Publicly Reported Confirmed Cases: Estimation and Application. <https://doi.org/107326/M20-0504>. 2020;172(9):577-582. doi:10.7326/M20-0504

14. Soni A, Herbert C, Pretz C, Stamegna P, Filippaios A. Finding a Needle in the Haystack: Design and Implementation of a Digital Site-less Clinical Study of Serial Rapid Antigen Testing to Identify Asymptomatic SARS-CoV-2 Infection. *medRxiv*. Published online August 8, 2022.
15. Wilson EB. Probable Inference, the Law of Succession, and Statistical Inference. *J Am Stat Assoc*. 1927;22(158):209-212. doi:10.1080/01621459.1927.10502953
16. Rader B, Gertz A, Iuliano AD, et al. Use of At-Home COVID-19 Tests — United States, August 23, 2021–March 12, 2022. *MMWR Morb Mortal Wkly Rep*. 2022;71(13):489-494. doi:10.15585/MMWR.MM7113E1
17. CDC streamlines COVID-19 guidance to help the public better protect themselves and understand their risk. CDC Newsroom Releases. Published August 11, 2022. Accessed December 20, 2022. <https://www.cdc.gov/media/releases/2022/p0811-covid-guidance.html>
18. Soni A, Herbert C, Filippaios A, et al. Comparison of Rapid Antigen Tests' Performance Between Delta and Omicron Variants of SARS-CoV-2. *Ann Intern Med*. Published online October 11, 2022. doi:10.7326/M22-0760
19. Wu Y, Kang L, Guo Z, Liu J, Liu M, Liang W. Incubation Period of COVID-19 Caused by Unique SARS-CoV-2 Strains: A Systematic Review and Meta-analysis. *JAMA Netw Open*. 2022;5(8):e2228008-e2228008. doi:10.1001/jamanetworkopen.2022.28008
20. el Sahly HM, Baden LR, Essink B, et al. Efficacy of the mRNA-1273 SARS-CoV-2 Vaccine at Completion of Blinded Phase. *New England Journal of Medicine*. 2021;385(19):1774-1785. doi:10.1056/NEJMOA2113017/SUPPL_FILE/NEJMOA2113017_DATA-SHARING.PDF
21. Tenforde MW, Self WH, Naioti EA, et al. Sustained Effectiveness of Pfizer-BioNTech and Moderna Vaccines Against COVID-19 Associated Hospitalizations Among Adults - United States, March-July 2021. *MMWR Morb Mortal Wkly Rep*. 2021;70(34):1156-1162. doi:10.15585/MMWR.MM7034E2
22. Emary KRW, Golubchik T, Aley PK, et al. Efficacy of ChAdOx1 nCoV-19 (AZD1222) vaccine against SARS-CoV-2 variant of concern 202012/01 (B.1.1.7): an exploratory analysis of a randomised controlled trial. *Lancet*. 2021;397(10282):1351-1362. doi:10.1016/S0140-6736(21)00628-0
23. Birhane M, Bressler S, Chang G, et al. COVID-19 Vaccine Breakthrough Infections Reported to CDC — United States, January 1–April 30, 2021. *MMWR Morb Mortal Wkly Rep*. 2021;70(21):792-793. doi:10.15585/MMWR.MM7021E3
24. Buchan SA, Chung H, Brown KA, et al. Estimated Effectiveness of COVID-19 Vaccines Against Omicron or Delta Symptomatic Infection and Severe Outcomes. *JAMA Netw Open*. 2022;5(9):e2232760-e2232760. doi:10.1001/JAMANETWORKOPEN.2022.32760
25. Ioannou GN, Bohnert ASB, O'Hare AM, et al. Effectiveness of mRNA COVID-19 Vaccine Boosters Against Infection, Hospitalization, and Death: A Target Trial Emulation in the Omicron (B.1.1.529) Variant Era. <https://doi.org/107326/M22-1856>. Published online October 11, 2022. doi:10.7326/M22-1856
26. Nanduri S, Pilishvili T, Derado G, et al. Effectiveness of Pfizer-BioNTech and Moderna Vaccines in Preventing SARS-CoV-2 Infection Among Nursing Home Residents Before and During Widespread

Circulation of the SARS-CoV-2 B.1.617.2 (Delta) Variant — National Healthcare Safety Network, March 1–August 1, 2021. *MMWR Morb Mortal Wkly Rep.* 2021;70(34):1163-1166.
doi:10.15585/MMWR.MM7034E3

27. Boucau J, Marino C, Regan J, et al. Duration of Shedding of Culturable Virus in SARS-CoV-2 Omicron (BA.1) Infection. *New England Journal of Medicine.* 2022;387(3):275-277.
doi:10.1056/NEJMc2202092
28. Ke R, Martinez PP, Smith RL, et al. Longitudinal Analysis of SARS-CoV-2 Vaccine Breakthrough Infections Reveals Limited Infectious Virus Shedding and Restricted Tissue Distribution. *Open Forum Infect Dis.* 2022;9(7):ofac192. doi:10.1093/ofid/ofac192

Tables and Figures:

Table 1: Characteristics of Vaccinated and Unvaccinated Participants included in Analyses

	Included in DPSO analysis (n= 2086)		Included in DPE analysis (n=546)	
	Vaccinated (n=1788)	Unvaccinated (n=298)	Vaccinated (n=464)	Unvaccinated (n=82)
Confirmed RT-PCR+: n (%)	179 (10.0)	81 (27.2)	64 (13.8)	32 (39.0)
Symptomatic: n (%)	1788 (100.0)	298 (100.0)	233 (50.2)	45 (54.9)
Previous Infections				
None	1608 (89.9)	235 (78.9)	419 (90.3)	64 (78.0)
1	165 (9.2)	57 (19.1)	38 (8.2)	17 (20.7)
2+	15 (0.8)	6 (2.0)	7 (1.5)	1 (1.2)
Participant Age (years): n (%)				
<18 years	128 (7.2)	110 (36.9)	49 (10.6)	39 (47.6)
18-44	1158 (64.8)	140 (47.0)	272 (58.6)	31 (37.8)
45-64	401 (22.4)	43 (14.4)	129 (27.8)	10 (12.2)
≥65 years	101 (5.6)	5 (1.7)	14 (3.0)	2 (2.4)
Gender: n (%)				
Men	458 (25.6)	93 (31.2)	145 (31.2)	34 (41.5)
Women	1263 (70.6)	199 (66.8)	309 (66.6)	45 (54.9)
Transgender	4 (0.2)	0 (0.0)	0 (0.0)	0 (0.0)
Non-binary	51 (2.9)	1 (0.3)	9 (1.9)	0 (0.0)
Missing	12 (0.7)	5 (1.7)	1 (0.2)	3 (3.7)
Race: n (%)				
White	1451 (81.2)	252 (84.6)	361 (77.8)	72 (87.8)
Asian	84 (4.7)	5 (1.7)	32 (6.9)	1 (1.2)
Black/African- American	49 (2.7)	14 (4.7)	14 (3.0)	3 (3.7)
Native American/Alaskan Native	4 (0.2)	1 (0.3)	3 (0.6)	0 (0.0)
Native Hawaiian or Pacific Islander	11 (0.6)	1 (0.3)	0 (0.0)	0 (0.0)
Multiracial	102 (5.7)	8 (2.7)	19 (4.1)	1 (1.2)
Other	63 (3.5)	9 (3.0)	27 (5.8)	5 (6.1)
Missing	24 (1.3)	8 (2.7)	8 (1.7)	0 (0.0)
Hispanic: n (%)	100 (5.6)	33 (11.1)	28 (6.0)	10 (12.2)
Education Level: n (%)				
Bachelor's Degree or higher	1120 (62.6)	50 (16.8)	266 (57.3)	14 (17.1)
Some college	395 (22.1)	79 (26.5)	106 (22.8)	16 (19.5)
High school graduate	131 (7.3)	57 (19.1)	39 (8.4)	13 (15.9)
Did not finish high	107 (6.0)	78 (26.2)	40 (8.6)	32 (39.0)

	school				
	Don't know	12 (0.7)	15 (5.0)	4 (0.9)	5 (6.1)
	Missing	23 (1.3)	19 (6.4)	9 (1.9)	2 (2.4)
	Employment Status: n (%)				
	Working now	1208 (67.6)	108 (36.2)	342 (73.7)	23 (28.0)
	Student	294 (16.4)	115 (38.6)	78 (16.8)	43 (52.4)
	Retired	99 (5.5)	3 (1.0)	9 (1.9)	2 (2.4)
	Unemployed	169 (9.5)	63 (21.1)	27 (5.8)	14 (17.1)
	Other	7 (0.4)	4 (1.3)	2 (0.4)	0 (0.0)
	Missing	11 (0.6)	5 (1.7)	6 (1.3)	0 (0.0)

Figure 1: Consort Diagram for DPSO and DPE Analyses

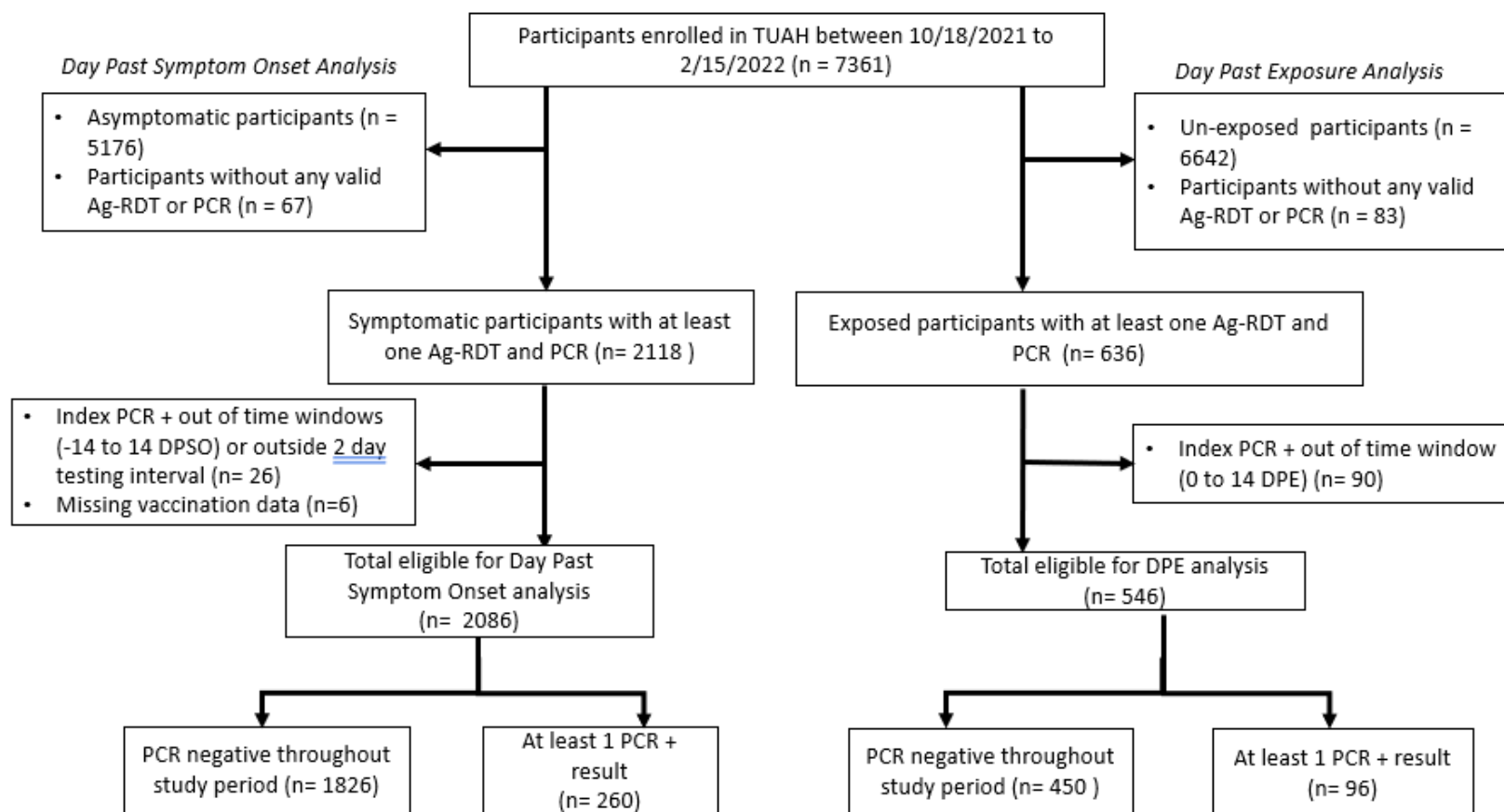
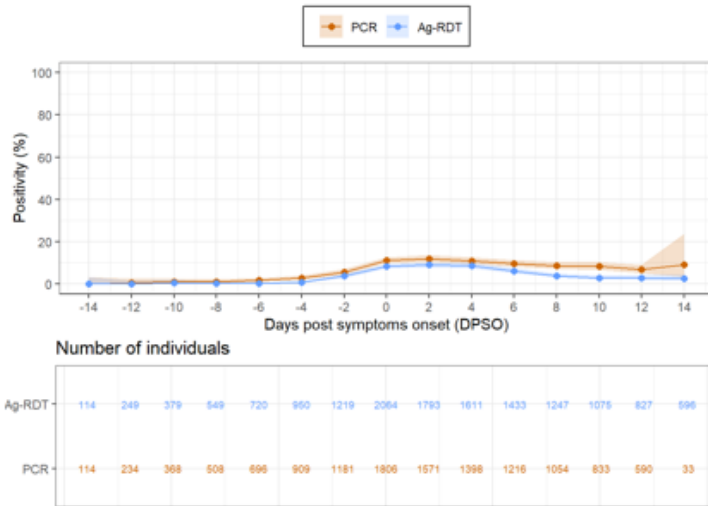
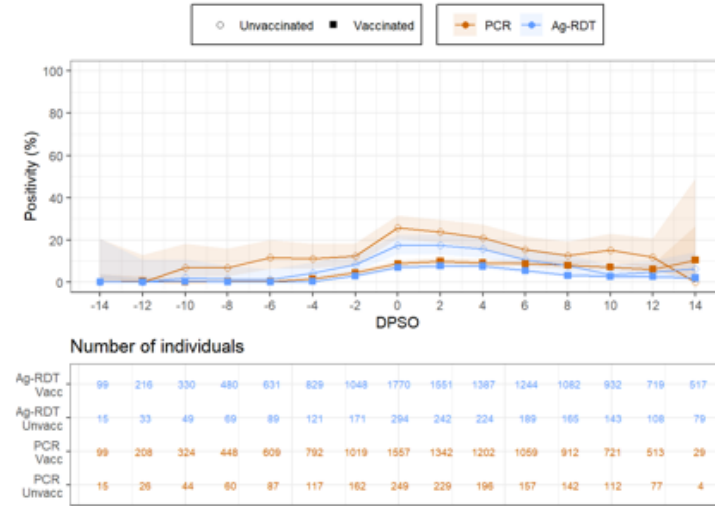


Figure 2: PCR and Rapid Antigen Test Positivity by Day Past Symptom Onset

a.



b.



c.

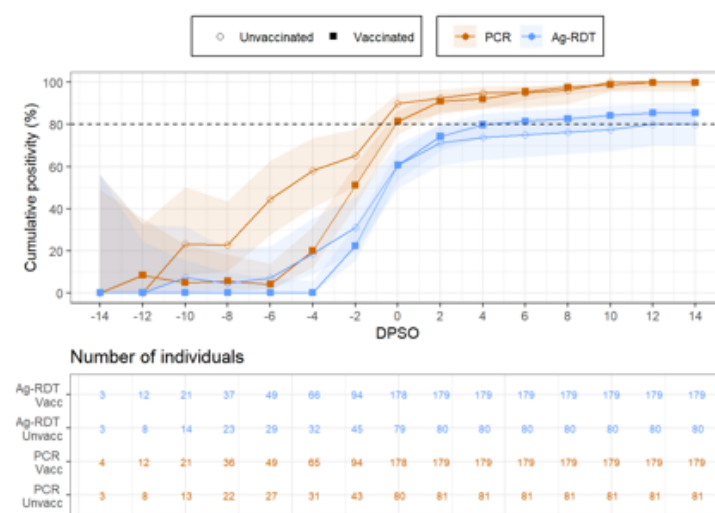
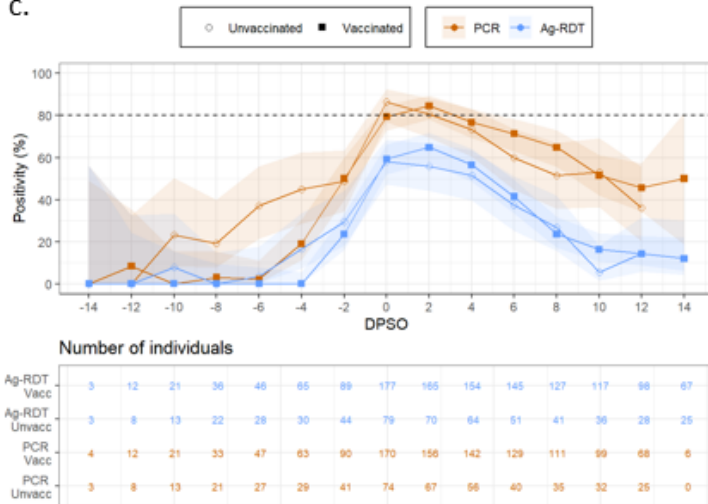


Figure 3: PCR and Rapid Antigen Test Positivity by Day Past Exposure

