

1 **TITLE**

2 **Point-of-care prognostication in moderate Covid-19: analytical validation and diagnostic**  
3 **accuracy of a soluble urokinase plasminogen activator receptor (suPAR) rapid test**

4

5 **AUTHORS**

6 Arjun Chandna,<sup>1,2</sup> Raman Mahajan,<sup>3</sup> Priyanka Gautam,<sup>4</sup> Lazaro Mwandigha,<sup>5</sup> Sabine Dittrich,<sup>2,6,7</sup>  
7 Vikash Kumar,<sup>3</sup> Jennifer Osborn,<sup>6</sup> Pragya Kumar,<sup>8</sup> Constantinos Koshariis,<sup>5</sup> George M Varghese,<sup>4</sup>  
8 Yoel Lubell,<sup>2,9</sup> and Sakib Burza<sup>3,10</sup>

9

10 **AFFILIATIONS**

- 11 1. Cambodia Oxford Medical Research Unit, Angkor Hospital for Children, Siem Reap,  
12 Cambodia
- 13 2. Centre for Tropical Medicine & Global Health, University of Oxford, Oxford, UK
- 14 3. Médecins Sans Frontières, New Delhi, India
- 15 4. Department of Infectious Diseases, Christian Medical College, Vellore, India
- 16 5. Nuffield Department of Primary Care Health Sciences, University of Oxford, Oxford, UK
- 17 6. Foundation for Innovative Diagnostics, Geneva, Switzerland
- 18 7. Deggendorf Institut of Technology, European-Campus Rottal Inn, Pfarrkirchen, Germany
- 19 8. Department of Community & Family Medicine, All India Institute of Medical Sciences,  
20 Patna, India
- 21 9. Mahidol Oxford Tropical Medicine Research Unit, Mahidol University, Bangkok, Thailand

22 10. Department of Clinical Research, London School of Hygiene & Tropical Medicine, London,  
23 UK

24

25 **CORRESPONDING AUTHOR**

26 Dr. Arjun Chandna, Cambodia Oxford Medical Research Unit, Siem Reap, Cambodia

27 Tel: +855-85-712-586; Email: [arjun@tropmedres.ac](mailto:arjun@tropmedres.ac); [arjunchandna@gmail.com](mailto:arjunchandna@gmail.com)

28

29 **KEY WORDS**

30 COVID-19; SARS-CoV-2; rapid test; point-of-care; suPAR; triage; low- and middle-income

31 country; LMIC

32

33 **SHORT TITLE**

34 Rapid suPAR-guided prognostication in Covid-19

35

36

37 **ABSTRACT**

38 The soluble urokinase plasminogen activator receptor (suPAR) has been proposed as a  
39 biomarker for the risk stratification of patients presenting with acute infections. However, most  
40 studies evaluating suPAR have used platform-based assays, the diagnostic accuracy of which  
41 may differ from point-of-care tests capable of informing timely patient triage in settings  
42 without established laboratory capacity.

43  
44 Using samples and data collected during a prospective cohort study of 425 patients presenting  
45 with moderate Covid-19 to two hospitals in India, we evaluated the analytical performance and  
46 diagnostic accuracy of a commercially-available rapid diagnostic test (RDT) for suPAR, using an  
47 enzyme-linked immunoassay (ELISA) as the reference standard. Although agreement between  
48 the two tests was limited (bias = -2.46 ng/mL [95% CI = -2.65 to -2.27 ng/mL]), diagnostic  
49 accuracy to predict progression to supplemental oxygen requirement was comparable, whether  
50 suPAR was used alone (area under the receiver operating characteristic curve [AUC] of RDT =  
51 0.73 [95% CI = 0.68 to 0.79] vs. AUC of ELISA = 0.70 [95% CI = 0.63 to 0.76];  $p = 0.12$ ) or as part  
52 of a previously published multivariable clinical prediction model (AUC of RDT-based model =  
53 0.74 [95% CI = 0.66 to 0.83] vs. AUC of ELISA-based model = 0.72 [95% CI = 0.64 to 0.81];  $p =$   
54 0.78).

55  
56 Lack of agreement between the suPAR RDT and ELISA in our cohort warrants further  
57 investigation and highlights the importance of assessing candidate point-of-care tests to ensure  
58 management algorithms reflect the assay that will ultimately be used to inform patient care.

59 The availability of a quantitative point-of-care test for suPAR opens the door to suPAR-guided  
60 risk stratification of patients with Covid-19 and other acute infections in settings with limited  
61 laboratory capacity.

62

63

## 64 INTRODUCTION

65 In busy clinical settings the window for effective triage is short. Biochemical biomarkers  
66 included in risk stratification tools require rapid turnaround times. However, studies developing  
67 triage tools commonly use laboratory-based platforms to quantify biomarker concentrations,  
68 the diagnostic accuracy of which may differ from point-of-care tests required to inform timely  
69 management of individual patients in settings with limited laboratory capacity.<sup>1</sup>

70

71 The soluble version of the urokinase plasminogen activator receptor (suPAR) is upregulated  
72 during the host response to infection.<sup>2</sup> Measurements of suPAR have been shown to be useful  
73 in the diagnosis and prognosis of a wide range of infections and infectious syndromes,<sup>3-8</sup>  
74 including SARS-CoV-2.<sup>9,10</sup> Recently, our group and others developed clinical prediction models  
75 incorporating suPAR for both community- and hospital-based triage of patients with Covid-  
76 19.<sup>11,12</sup> However, although suPAR is measurable using a commercially-available rapid test, these  
77 studies quantified suPAR using laboratory-based immunoassays.

78

79 We performed an analytical validation of a rapid diagnostic test (RDT) for suPAR using samples  
80 from a multi-centre prospective cohort study conducted in India.<sup>11</sup> We evaluated the diagnostic

81 accuracy of the RDT by comparing the predictive performance of suPAR quantified using the  
82 RDT and an enzyme-linked immunosorbent assay (ELISA). Our hypothesis was that the suPAR  
83 RDT might be useful for triage of patients presenting with moderate Covid-19 irrespective of its  
84 analytical performance when compared with the reference test.

85

86

## 87 **METHODS**

### 88 *Study population and clinical data collection*

89 This is a secondary analysis of data collected during a prospective cohort study conducted at  
90 two hospitals in India between October 2020 and July 2021. The study design and setting have  
91 been described previously.<sup>11</sup> Briefly, consenting consecutive adults (aged  $\geq 18$  years) presenting  
92 with clinically-suspected SARS-CoV-2 infection of moderate severity (defined as peripheral  
93 oxygen saturation ( $\text{SpO}_2$ )  $\geq 94\%$  and respiratory rate (RR)  $\leq 30$  breaths per minute (BPM) in the  
94 context of systemic symptoms) were recruited. Clinical parameters were measured at  
95 enrolment. Admitted participants were followed-up each day until death, discharge or day 14,  
96 whichever occurred first. For those not admitted or discharged prior to day 14, follow-up was  
97 conducted via telephone on days 7 and 14, with participants who reported worsening and/or  
98 persistent symptoms recalled to have their  $\text{SpO}_2$  and RR measured. The primary outcome for  
99 the original study was development of a supplemental oxygen requirement within 14 days of  
100 enrolment, defined as any of:  $\text{SpO}_2 < 94\%$ ; RR  $> 30$  BPM;  $\text{SpO}_2/\text{FiO}_2 < 400$ ; or death.

101

102 *Laboratory procedures*

103 Venous blood samples were collected in ethylenediaminetetraacetic acid (EDTA) tubes at  
104 enrolment, centrifuged within four hours, and plasma aliquots stored at  $\leq -20^{\circ}\text{C}$ . Frozen plasma  
105 aliquots were transported on dry ice and thawed at  $2-8^{\circ}\text{C}$  overnight prior to analysis. suPAR  
106 concentrations were quantified using the suPARnostic ELISA and the suPARnostic Quick Triage  
107 test (Virogates, Denmark). The suPARnostic ELISA is a simplified double monoclonal antibody  
108 sandwich assay which requires  $15\mu\text{L}$  of plasma. Samples were run in duplicate and mean  
109 concentration reported. The Quick Triage test is a RDT based on lateral flow principles. It  
110 requires  $10\mu\text{L}$  of plasma and has a dynamic range of 2-15 ng/mL. Paired with an automated  
111 lateral flow optical reader it has a time-to-result of 20 minutes. Both tests were performed as  
112 per the manufacturer's instructions using the same aliquot of thawed plasma,<sup>13,14</sup> and the  
113 operators who performed both tests were blinded to the results of the other test.

114

#### 115 *Primary and secondary outcomes*

116 The primary outcome was the diagnostic accuracy of the RDT (index test) assessed by  
117 comparing the predictive performance (area under the receiver operating characteristic curve;  
118 AUC) of the RDT to the ELISA (reference standard). The secondary outcome was the analytical  
119 performance of the RDT, assessed by quantifying the agreement between the RDT and ELISA.

120

#### 121 *Statistical methods*

122 Logistic regression was used to quantify the AUC and compare (DeLong method) the diagnostic  
123 accuracy of the RDT and ELISA (R package: *pROC*).<sup>15,16</sup> The analytical performance of the RDT  
124 was evaluated using a Bland-Altman plot to estimate the bias and limits of agreement between

125 the RDT and the ELISA (R package: *blandr*).<sup>17,18</sup> Assessment of agreement was limited to  
126 samples within the dynamic range (2-15 ng/mL) of the RDT. A sensitivity analysis was conducted  
127 where samples quantified on the ELISA but outside the dynamic range of the RDT were set to  
128 the limits of quantification of the RDT. All analyses were performed in R, versions 4.0.2 and  
129 4.0.3.<sup>19</sup>

130

### 131 *Sample size*

132 For the purposes of an analytical validation, the Clinical and Laboratory Standards Institute  
133 (CLSI) recommend a minimum sample size of 100 to evaluate agreement between a candidate  
134 and reference test.<sup>20</sup> To maximise precision of the results, we used all available samples from  
135 the original study (n = 425).

136

### 137 *Ethical approvals and reporting*

138 This investigator-initiated study was prospectively registered (ClinicalTrials.gov; NCT04441372),  
139 with protocol and statistical analysis plan uploaded to the Open Science Framework platform  
140 (DOI: 10.17605/OSF.IO/DXQ43). Ethical approval was given by the All India Institute for Medical  
141 Sciences Patna Ethics Committee; Christian Medical College Ethics Committee; Oxford Tropical  
142 Research Ethics Committee; and Médecins Sans Frontières Ethical Review Board. The study is  
143 reported in accordance with the Standards for Reporting Diagnostic accuracy studies (STARD)  
144 guidelines (Supplementary Material 1).<sup>21</sup>

145

146

147 **RESULTS**

148 *Clinical outcomes*

149 Between 22 October 2020 and 3 July 2021, 426 participants were recruited of whom 425 had  
150 suPAR concentrations quantified using the RDT and ELISA. Three participants were lost-to-  
151 follow-up before day 14, leaving 422 participants available for the primary analysis (Figure 1).  
152 Eighty-nine participants developed a supplemental oxygen requirement (89/422; 21.1%).

153

154 **FIGURE ONE: Eligibility of samples for inclusion in analytical validation and diagnostic**  
155 **accuracy evaluation.**

156

157 *Limited agreement between the reference ELISA and candidate RDT for quantification of suPAR*

158 Forty-four samples returned values outside the dynamic range of the RDT on either the ELISA  
159 and/or RDT, leaving 381 paired samples for assessment of agreement. Median suPAR  
160 concentration was higher when quantified by the RDT (Table 1; 6.6 vs. 4.2 ng/mL;  $p < 0.001$ ).  
161 The two tests were correlated (Pearson's correlation = 0.66 [95% CI = 0.60-0.71];  $p < 0.001$ ) but  
162 there was limited agreement, with the RDT returning higher values than the ELISA on average.  
163 A Bland-Altman plot indicated a bias of -2.46 ng/mL (95% CI = -2.65 to -2.27 ng/mL) with upper  
164 and lower limits of agreement of 1.21 ng/mL (95% CI = 0.89 to 1.54 ng/mL) and -6.13 ng/mL  
165 (95% CI = -6.45 to -5.81 ng/mL) respectively (Figure 2). A sensitivity analysis in which samples  
166 outside the dynamic range of the RDT were set to the limits of detection of the RDT returned  
167 similar results (Supplementary Material 2). Given the disagreement with the reference test we



168 verified the reproducibility of the RDT results by repeating the measurements of all participants  
 169 at one site (n = 125) using another batch of RDTs (Supplementary Material 3).

170

171 **TABLE 1. Baseline characteristics of the cohort, stratified by progression to supplemental**  
 172 **oxygen requirement. Median values (IQR) are reported for continuous variables. \*3 participants**  
 173 **missing information about supplemental oxygen requirement excluded from table but included**  
 174 **in assessment of agreement. †Wilcoxon rank sum test.**

175

Baseline characteristics	Overall (n = 378)*	Developed oxygen requirement		
		No (n = 297)	Yes (n = 81)	p-value †
<b>Demographic characteristics</b>				
Age (years)	54.0 (42.0, 63.0)	54.0 (42.0, 62.0)	54.0 (42.0, 67.0)	0.70
Male sex	261 / 378 (69%)	199 / 333 (67%)	62 / 81 (77%)	0.10
<b>suPAR assay</b>				
suPAR ELISA (ng/ml)	4.2 (3.2 to 5.6)	4.0 (3.1 to 5.3)	5.2 (3.8 to 6.4)	< 0.001
suPAR RDT (ng/ml)	6.6 (5.2 to 8.5)	6.2 (5.0 to 8.3)	8.0 (6.8 to 9.4)	< 0.001

183

184 **FIGURE TWO: Relationship between the suPAR RDT and ELISA. Left panel: Bland-Altman plot**  
 185 **indicating agreement between the two tests. Difference between RDT and ELISA measurement**  
 186 **in ng/mL plotted on y-axis. Mean of the RDT and ELISA measurement in ng/mL plotted on x-axis.**  
 187 **Limits of agreement defined by the concentrations within which 95% of the data fall. Blue line**  
 188 **indicates bias, green line indicates upper limit of agreement, red line indicates lower limit of**

189 *agreement, all with 95% confidence intervals. Right panel: Scatterplot indicating correlation*  
190 *between the two tests.*

191

192 *Diagnostic accuracy is maintained when a rapid point-of-care test is used to quantify suPAR*  
193 *concentrations instead of a laboratory-based assay*

194 Although agreement between the two tests was limited, we recognised that the RDT might still  
195 have utility providing predictive performance did not deteriorate when suPAR concentrations  
196 were quantified using the RDT rather than the ELISA. Participants who progressed to develop a  
197 supplemental oxygen requirement had higher median baseline suPAR levels, irrespective of the  
198 assay used for quantification (Table 1; RDT = 8.0 vs. 6.2 ng/mL,  $p < 0.001$ ; ELISA = 5.2 vs. 4.0  
199 ng/mL,  $p < 0.001$ ). Diagnostic accuracy of the RDT was comparable to the ELISA (Figure 3; AUC  
200 of RDT = 0.73 [95% CI = 0.68 to 0.79] vs. AUC of ELISA = 0.70 [95% CI = 0.63 to 0.76];  $p = 0.12$ )  
201 for discriminating participants who would progress to require supplemental oxygen. Evaluation  
202 of the diagnostic accuracy of the RDT within the framework of our previously published  
203 multivariable clinical prediction model confirmed comparable predictive performance of the  
204 model whether suPAR was quantified using the RDT or the ELISA (AUC of RDT-based model =  
205 0.74 [95% CI = 0.66 to 0.83] vs. AUC of ELISA-based model = 0.72 [95% CI = 0.64 to 0.81];  $p =$   
206 0.78). The weighting (regression coefficient) for suPAR within the model differed depending on  
207 which assay was used for quantification (Supplementary Material 4).

208

209 **FIGURE THREE: Diagnostic accuracy of suPAR quantified using a point-of-care RDT or**  
210 **laboratory-based ELISA. AUC = area under the receiver operating characteristic curve.**

211

212

213 **DISCUSSION**

214 We demonstrate equivalent diagnostic accuracy between an index RDT for suPAR and a  
215 laboratory-based ELISA to predict progression to supplemental oxygen requirement amongst  
216 patients presenting with moderate Covid-19. Comparable predictive performance of the RDT  
217 was achieved despite limited agreement with the reference test and was maintained whether  
218 suPAR was used alone or as a constituent parameter in a previously published multivariable  
219 clinical prediction model for the triage of patients with moderate Covid-19.<sup>11</sup>

220

221 Our results illustrate the importance of conducting both analytical and clinical validations of  
222 candidate point-of-care tests. The limited agreement between the two suPAR tests indicates  
223 that the RDT cannot replace or be used interchangeably with the ELISA. Consequently, results  
224 from studies utilising different suPAR assays should not be pooled. If the tests are adopted for  
225 routine use, cut-offs associated with particular clinical management decisions (for example,  
226 admission or discharge from the emergency department) or weightings within multivariable  
227 triage tools (prediction models) should be assay-dependent.<sup>11,12,22</sup> Similarly, if suPAR  
228 measurements are used to inform participant recruitment into clinical trials, it is important that  
229 eligibility criteria are tailored to the assay used for enrolment.<sup>23</sup>

230

231 The lack of agreement between the RDT and ELISA in our cohort is unexpected. The  
232 manufacturer reports that suPAR concentrations measured using the RDT should be within

233  $\pm 10\%$  of measurements made on the ELISA, further underlining the need for context specific  
234 evaluation.<sup>13,22</sup> The impact of different detection methods for suPAR has been demonstrated,<sup>24</sup>  
235 however in our study both the ELISA and RDT used the same capture antibodies. Although RDT  
236 measurements were made after an additional freeze-thaw cycle, multiple studies have  
237 confirmed that suPAR concentrations are stable up to at least five repeated freeze-thaw  
238 cycles.<sup>25,26</sup> In our cohort, suPAR concentrations quantified using the RDT were higher than  
239 anticipated for non-severe patients attending an emergency department.<sup>13</sup> It is possible that an  
240 unknown underlying population factor may have interfered with the functioning of the RDT  
241 assay and this merits further investigation. To our knowledge only one other study has  
242 quantified suPAR concentrations using the same RDT in India; 66.3% (126/190) of patients had  
243 suPAR concentrations  $> 5.5$  ng/mL, however average concentration was not reported.<sup>27</sup>  
244 Nevertheless, as our results demonstrate, lack of agreement between inexpensive, quick, and  
245 practical RDTs and batched, quality-controlled, laboratory-based assays, does not necessarily  
246 preclude clinical utility of an index test on the field.

247

248 This is the first study evaluating the analytical performance and diagnostic accuracy of a RDT for  
249 suPAR, head-to-head against a reference test in resource-constrained setting. The RDTs were  
250 performed on frozen plasma by laboratory technicians. If the tests were to inform real-time  
251 clinical decisions, fresh plasma would be used and trained laboratory technicians may not be  
252 available, especially in contexts with limited laboratory capacity. Future research should extend  
253 our results to explore the field-based implementation of the RDT using unfrozen patient  
254 samples and evaluate reliability and usability amongst lesser-trained practitioners.

255  
256 We demonstrate comparable diagnostic accuracy of a rapid, quantitative, point-of-care test for  
257 suPAR to the reference laboratory-based ELISA that was used to develop a previously validated  
258 clinical prediction model for the triage of patients presenting with moderate Covid-19. These  
259 results are promising and should encourage further exploration of the utility of suPAR-guided  
260 risk stratification of patients presenting with Covid-19 and other acute infections in settings  
261 with limited laboratory capacity. Lack of agreement between the two tests highlights the  
262 importance of undertaking evaluations of point-of-care tests to ensure cut-offs and weightings  
263 are adjusted accordingly prior to a diagnostic test being recommended for clinical use.

264

265

## 266 **ACKNOWLEDGEMENTS**

267 The authors thank Emmanuel Moreau at the Foundation for Innovative New Diagnostics (FIND)  
268 for his advice during the conduct of the study.

269

270

## 271 **FUNDING**

272 The PRIORITISE (Prognostication of Oxygen Requirement in Patients with Non-severe SARS-CoV-  
273 2 Infection) study was funded by MSF, India, who maintained a sponsor/investigator role for  
274 the study. The Wellcome Trust provides core funding to the Mahidol-Oxford Tropical Medicine  
275 Research Unit in Bangkok [220211, 215604/Z/19/Z], which supported the design, monitoring  
276 and analysis of the study. The suPAR RDTs were procured by FIND with funding from the

277 Australian Government. CK is supported by a Wellcome Trust/Royal Society Sir Henry Dale  
278 Fellowship [211182/Z/18/Z]. For the purpose of open access, the author has applied a CC BY  
279 public copyright license to any Author Accepted Manuscript version arising from this  
280 submission.

281

282

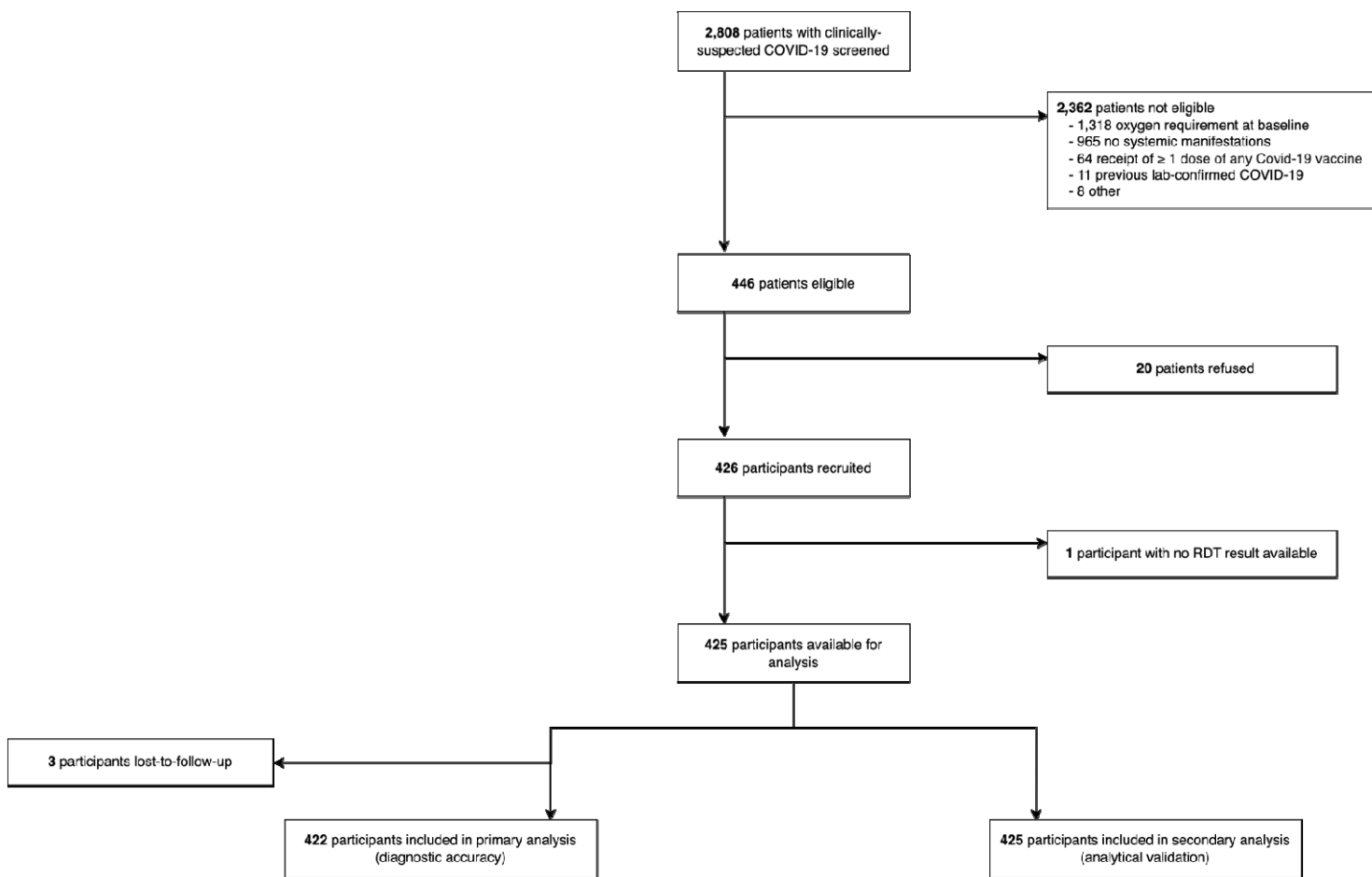
## 283 REFERENCES

- 284 1. Dittrich S, Tadesse BT, Moussy F, et al. Target Product Profile for a Diagnostic Assay to  
285 Differentiate between Bacterial and Non-Bacterial Infections and Reduce Antimicrobial  
286 Overuse in Resource-Limited Settings: An Expert Consensus. *PLoS One* 2016; **11**(8):  
287 e0161721.
- 288 2. Donadello K, Scolletta S, Covajes C, Vincent JL. suPAR as a prognostic biomarker in sepsis.  
289 *BMC Med* 2012; **10**.
- 290 3. Ni W, Han Y, Zhao J, et al. Serum soluble urokinase-type plasminogen activator receptor as  
291 a biological marker of bacterial infection in adults: a systematic review and meta-analysis.  
292 *Sci Rep* 2016; **6**: 39481.
- 293 4. Wittenhagen P, Kronborg G, Weis N, et al. The plasma level of soluble urokinase receptor is  
294 elevated in patients with *Streptococcus pneumoniae* bacteraemia and predicts mortality.  
295 *Clin Microbiol Infect* 2004; **10**(5): 409-15.
- 296 5. Rabna P, Andersen A, Wejse C, et al. Utility of the plasma level of suPAR in monitoring risk  
297 of mortality during TB treatment. *PLoS One* 2012; **7**(8): e43933.
- 298 6. Stefanova V, Ngai M, Weckman AM, et al. suPAR as a Prognostic Marker of Ugandan  
299 Children at Risk of Severe and Fatal Malaria. *Clin Infect Dis* 2022.
- 300 7. Luo Q, Ning P, Zheng Y, Shang Y, Zhou B, Gao Z. Serum suPAR and syndecan-4 levels predict  
301 severity of community-acquired pneumonia: a prospective, multi-centre study. *Crit Care*  
302 2018; **22**(1): 15.
- 303 8. Pregernig A, Muller M, Held U, Beck-Schimmer B. Prediction of mortality in adult patients  
304 with sepsis using six biomarkers: a systematic review and meta-analysis. *Ann Intensive Care*  
305 2019; **9**(1): 125.
- 306 9. Arnold DT, Attwood M, Barratt S, et al. Predicting outcomes of COVID-19 from admission  
307 biomarkers: a prospective UK cohort study. *Emerg Med J* 2021; **38**(7): 543-8.
- 308 10. Rovina N, Akinosoglou K, Eugen-Olsen J, Hayek S, Reiser J, Giamarellou-Bourboulis EJ.  
309 Soluble urokinase plasminogen activator receptor (suPAR) as an early predictor of severe  
310 respiratory failure in patients with COVID-19 pneumonia. *Crit Care* 2020; **24**(1): 187.
- 311 11. Chandna A, Mahajan R, Gautam P, et al. Facilitating safe discharge through predicting  
312 disease progression in moderate COVID-19: a prospective cohort study to develop and  
313 validate a clinical prediction model in resource-limited settings. *Clin Infect Dis* 2022.

- 314 12. Chalkias A, Skoulakis A, Papagiannakis N, et al. Circulating suPAR associates with severity  
315 and in-hospital progression of COVID-19. *Eur J Clin Invest* 2022; **52**(7): e13794.
- 316 13. Virogates A/S Denmark. Instructions for use: suPARnostic® Quick Triage for aLF Reader.  
317 Birkerød, Denmark; 2020.
- 318 14. Virogates A/S Denmark. Instructions for use: Enzyme immunoassay for quantitative  
319 determination of soluble urokinase plasminogen activator receptor in human plasma and  
320 serum. Birkerød, Denmark; 2020.
- 321 15. Robin X, Turck N, Hainard A, et al. pROC: an open-source package for R and S+ to analyze  
322 and compare ROC curves. *BMC Bioinformatics* 2011; **12**(77).
- 323 16. DeLong ER, DeLong DM, Clarke-Pearson DL. Comparing the Areas under Two or More  
324 Correlated Receiver Operating Characteristic Curves: A Nonparametric Approach.  
325 *Biometrics* 1988; **44**: 837-45.
- 326 17. Bland M, Altman DG. Statistical methods for assessing agreement between two methods of  
327 clinical measurement. *Lancet* 1986; **327**(8476): 307-10.
- 328 18. Datta D. blandr: a Bland-Altman Method Comparison package for R. 2017.
- 329 19. R Core Team. R: A language and environment for statistical computing. Vienna, Austria: R  
330 Foundation for Statistical Computing; 2020.
- 331 20. Clinical and Laboratory Standards Institute. Measurement Procedure Comparison and Bias  
332 Estimation Using Patient Samples; Approved Guideline —Third Edition (EP09-A3).  
333 Philadelphia, USA, 2013.
- 334 21. Bossuyt PM, Reitsma JB, Bruns DE, et al. STARD 2015: an updated list of essential items for  
335 reporting diagnostic accuracy studies. *BMJ* 2015; **351**: h5527.
- 336 22. Stauning MA, Altintas I, Kallemsø T, et al. Soluble Urokinase Plasminogen Activator  
337 Receptor as a Decision Marker for Early Discharge of Patients with COVID-19 Symptoms in  
338 the Emergency Department. *J Emerg Med* 2021; **61**(3): 298-313.
- 339 23. Kyriazopoulou E, Poulakou G, Milionis H, et al. Early treatment of COVID-19 with anakinra  
340 guided by soluble urokinase plasminogen receptor plasma levels: a double-blind,  
341 randomized controlled phase 3 trial. *Nat Med* 2021; **27**(10): 1752-60.
- 342 24. Winnicki W, Sunder-Plassmann G, Sengölge G, et al. Diagnostic and Prognostic Value of  
343 Soluble Urokinase-type Plasminogen Activator Receptor (suPAR) in Focal Segmental  
344 Glomerulosclerosis and Impact of Detection Method. *Sci Rep* 2019; **9**(1): 13783.
- 345 25. Chew-Harris J, Appleby S, Richards AM, Troughton RW, Pemberton CJ. Analytical,  
346 biochemical and clearance considerations of soluble urokinase plasminogen activator  
347 receptor (suPAR) in healthy individuals. *Clin Biochem* 2019; **69**: 36-44.
- 348 26. Kofoed K, Schneider UV, Scheel T, Andersen O, Eugen-Olsen J. Development and validation  
349 of a multiplex add-on assay for sepsis biomarkers using xMAP technology. *Clin Chem* 2006;  
350 **52**(7): 1284-93.
- 351 27. Kumar P, Kakar A, Gogia A, Waziri N. Evaluation of soluble urokinase-type plasminogen  
352 activator receptor (suPAR) quick test for triage in the emergency department. *J Family Med*  
353 *Prim Care* 2019; **8**(12): 3871-5.
- 354

355 **FIGURE ONE**

356 **Eligibility of samples for inclusion in analytical validation and diagnostic accuracy evaluation.**



357

358



359 **FIGURE TWO**

360 **Relationship between the suPAR RDT and ELISA.** Left panel: Bland-Altman plot indicating

361 agreement between the two tests. Difference between RDT and ELISA measurement in ng/mL

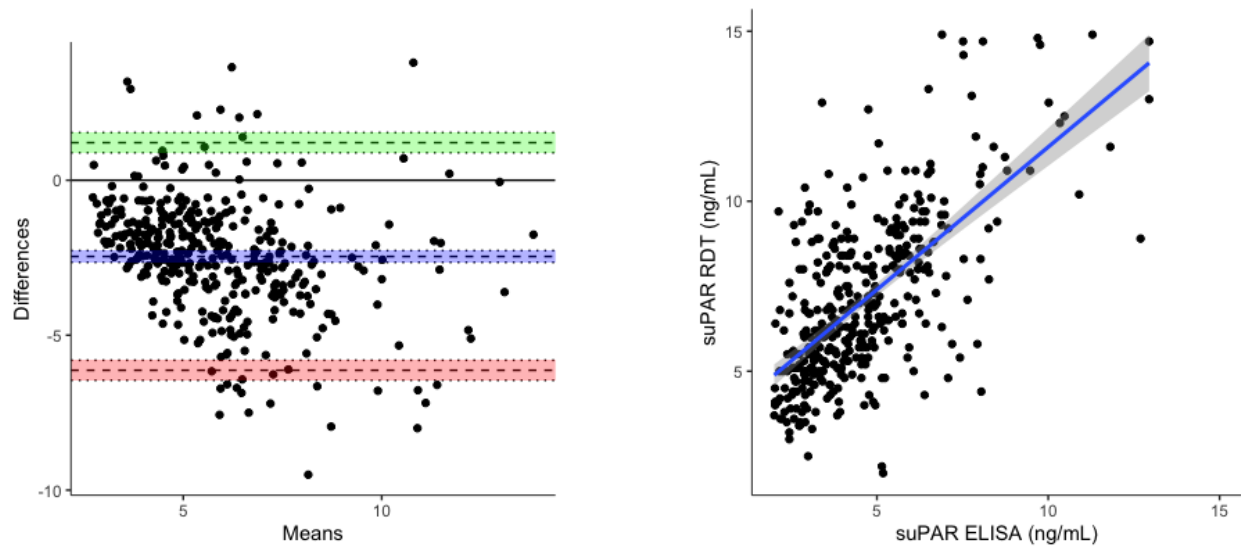
362 plotted on y-axis. Mean of the RDT and ELISA measurement in ng/mL plotted on x-axis. Limits of

363 agreement defined by the concentrations within which 95% of the data fall. Blue line indicates

364 bias, green line indicates upper limit of agreement, red line indicates lower limit of agreement,

365 all with 95% confidence intervals. Right panel: Scatterplot indicating correlation between the

366 two tests.



367

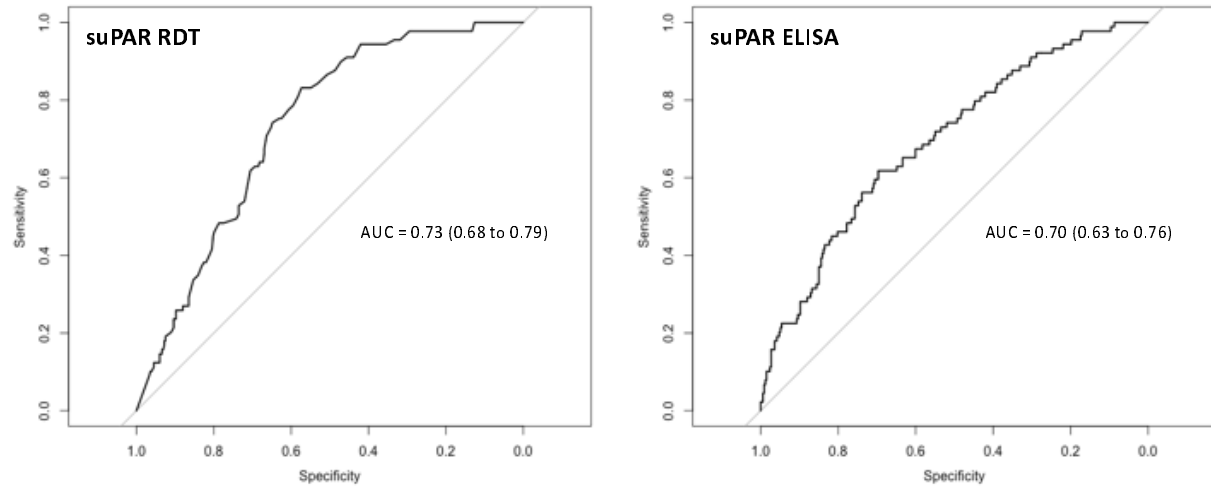
368

369 **FIGURE THREE**

370 **Diagnostic accuracy of suPAR quantified using a point-of-care RDT or laboratory-based ELISA.**

371 AUC = area under the receiver operating characteristic curve.

372



373

374

375