

1 **Triglyceride-glucose index and the risk of heart failure: evidence from two large**
2 **cohorts and a Mendelian randomization analysis**

3 **Short Title: Triglyceride-glucose index and the risk of heart failure**

4 Xintao Li, MD ^{1,2†}, Jeffrey Shi Kai Chan, MBChB ^{2†}, Bo Guan, MD ³, Shi Peng, MD,
5 PhD ¹, Xiaoyu Wu, MD ¹, Jiandong Zhou, PhD ^{2,5}, Jeremy Man Ho Hui ², Yan Hiu
6 Athena Lee ², Danish Iltaf Satti ², Shek Long Tsang MBBS ², Shouling Wu, MD, PhD
7 ⁴, Songwen Chen, MD, PhD ^{1*}, Gary Tse, MD, PhD ^{2,6,7*}, Shaowen Liu, MD, PhD ^{1*}.

8

9 ¹ Department of Cardiology, Shanghai General Hospital, School of Medicine, Shanghai
10 Jiao Tong University, Shanghai, China

11 ² Cardiovascular Analytics Group, Hong Kong – United Kingdom – China
12 collaboration

13 ³ Geriatric Cardiology Department of the Second Medical Center and National Clinical
14 Research Center for Geriatric Diseases, Chinese PLA General Hospital, Beijing, China

15 ⁴ Department of Cardiology, Kailuan General Hospital, Tangshan 063000, China.

16 ⁵ Nuffield Department of Medicine, University of Oxford, Oxford, United Kingdom.

17 ⁶ Kent and Medway Medical School, Canterbury, Kent, CT2 7NT, United Kingdom.

18 ⁷ Tianjin Key Laboratory of Ionic-Molecular Function of Cardiovascular Disease,
19 Department of Cardiology, Tianjin Institute of Cardiology, Second Hospital of Tianjin
20 Medical University, Tianjin 300211, China.

21

22

NOTE: This preprint reports new research that has not been certified by peer review and should not be used to guide clinical practice.

23 †These authors have contributed equally to this work and share first authorship

24

25 Corresponding author:

26 Professor Shaowen Liu, MD, PhD, Department of Cardiology, Shanghai General

27 Hospital, School of Medicine, Shanghai Jiao Tong University, 200080 Shanghai, China

28 Email: shaowen.liu@hotmail.com

29

30 Co-corresponding author:

31 Professor Gary Tse, MD, PhD, Kent and Medway Medical School, Canterbury, Kent,

32 CT2 7NT, United Kingdom. Email: garytse86@gmail.com

33 Dr. Songwen Chen, MD, PhD, Department of Cardiology, Shanghai General Hospital,

34 School of Medicine, Shanghai Jiao Tong University, 200080 Shanghai, China

35 Email: chensongwen@hotmail.com

36

37 Total word count of the manuscript:

38

39 **Abstract**

40 **Background:** The relationship between triglyceride-glucose (TyG) index, an emerging
41 marker of insulin resistance, and the risk of incident heart failure (HF) was unclear. This
42 study thus aimed to investigate this relationship.

43

44 **Methods:** Subjects without prevalent cardiovascular diseases from the prospective
45 Kailuan cohort (recruited during 2006-2007) and a retrospective cohort of family
46 medicine patients from Hong Kong (recruited during 2000-2003) were followed up
47 until December 31st, 2019 for the outcome of incident HF. Separate adjusted hazard
48 ratios (aHRs) summarizing the relationship between TyG index and HF risk in the two
49 cohorts were combined using a random-effect meta-analysis. Additionally, a two-
50 sample Mendelian randomization (MR) of published genome-wide association study
51 data was performed to assess the causality of observed associations.

52

53 **Results:** In total, 95,996 and 19,345 subjects from the Kailuan and Hong Kong cohorts
54 were analyzed, respectively, with 2,726 cases (2.8%) of incident HF in the former and
55 1,709 (7.0%) in the latter. Subjects in the highest quartile of TyG index had the highest
56 risk of incident HF in both cohorts (Kailuan: aHR 1.23 (95% confidence interval: 1.09-
57 1.39), $P_{Trend} < 0.001$; Hong Kong: aHR 1.21 (1.04-1.40), $P_{Trend} = 0.007$; both compared
58 with the lowest quartile). Meta-analysis showed similar results (highest versus lowest
59 quartile: HR 1.22(1.11-1.34), $P < 0.0001$). Findings from MR analysis, which included
60 47,309 cases and 930,014 controls, supported a causal relationship between higher TyG

61 index and increased risk of HF (odds ratio 1.27(1.15-1.40), $P<0.001$).

62

63 **Conclusion:** A higher TyG index is an independent and causal risk factor for incident
64 HF in the general population.

65

66 **Keywords:** Heart failure; Triglyceride-glucose index; Risk stratification; Mendelian
67 Randomization; Insulin resistance.

68

69 **Clinical Perspective:**

70 **What is new?**

- 71 • In 115,341 subjects from two large cohorts in China, an elevated triglyceride-
- 72 glucose (TyG) index was independently associated with an increased risk of
- 73 incident heart failure (HF).
- 74 • Two-sample Mendelian randomization analysis based on published genome-wide
- 75 association studies found significant association between genetically determined
- 76 TyG index and the risk of HF.
- 77 • Together, these findings suggest that a higher TyG index is an independent and
- 78 causal risk factor of incident HF in the general population.

79 **What are the clinical implications?**

- 80 • The TyG index may facilitate recognition of individuals at elevated risk of incident
- 81 HF and allow early preventive interventions.
- 82 • The demonstrated causal effect of TyG index on incident HF warrants further
- 83 research to fully understand the underlying mechanisms.

84

85 **Introduction**

86 Heart failure (HF) is associated with significant morbidity and mortality, with
87 contemporary five-year survival rates of less than 50%¹. The prevalence of HF has been
88 estimated to be 1-2% in developed countries and is projected to double by 2060^{2, 3}.
89 Given the enormous public health and socioeconomic burden caused by HF, it is
90 critically important to identify individuals at high risk of HF and to implement
91 preventive interventions as early as possible⁴.

92

93 Recently, the role of metabolic disorders in the development of HF has been
94 increasingly investigated⁵. Insulin resistance, a hallmark of type II diabetes mellitus and
95 metabolic syndrome, has been observed to be associated with adverse cardiac
96 remodeling and dysfunction⁶. Molecular studies have provided ample evidence for the
97 etiological role of insulin resistance in the development of HF^{7, 8}. However, the gold
98 standard method for measuring insulin sensitivity, the hyperinsulinaemic-euglycaemic
99 clamp test, is time-consuming and invasive⁹, which has impeded its widespread use in
100 clinical practice.

101

102 The triglyceride-glucose (TyG) index, a simple, dimensionless marker derived from
103 fasting blood triglyceride and glucose levels as measured in routine biochemical tests,
104 has been proposed and validated as a surrogate marker of insulin resistance¹⁰. Previous
105 studies have found a positive association between TyG index and the risk of various
106 metabolic and atherosclerotic cardiovascular diseases^{11, 12}. However, few studies have

107 been conducted to investigate the association between TyG index and the risk of
108 incident HF, and whether the association is causal remains undetermined.

109

110 Mendelian randomization (MR) makes use of genetic variants as instrumental variables
111 (IVs) to generate causal estimates of the long-term effects of risk factors on outcomes¹³.
112 MR analysis can overcome the limitations of residual confounding and reverse
113 causation in conventional observational studies^{13,14}. With the development of genome-
114 wide association studies (GWAS), MR is highly suited and has been used for
115 investigating the causal association between TyG index and HF^{15,16}.

116

117 As such, the present study aimed to assess the association between the TyG index and
118 the risk of incident HF, as well as using a two-sample MR study to determine whether
119 such associations were causal in nature.

120

121 **Methods**

122 *Study design and population*

123 Study subjects were identified from two Chinese studies, the Kailuan cohort in northern
124 China and a territory-wide cohort in Hong Kong. The protocol for this study was in
125 accordance with the guidelines of the Helsinki Declaration and this study was approved
126 by the Ethics Committee at the Kailuan General Hospital and the Institutional Review
127 Board of the University of Hong Kong / Hospital Authority Hong Kong West Cluster.

128

129 The Kailuan Study is a prospective cohort that based on a community in the Tangshan
130 City. Details of the study has been published elsewhere¹⁷. In brief, a total of 101,510
131 subjects (aged 18 – 98 years; 81,110 males) were enrolled in the Kailuan Study at
132 baseline (2006-2007), and received an interview of standardized questionnaires and
133 clinical examinations at 11 hospitals responsible for health care of the community. The
134 subjects were then followed up with repeat questionnaires, clinical and laboratory
135 examinations every two years. All subjects gave informed consent to their enrolment in
136 this study. Subjects with prevalent cancer and cardiovascular diseases, including HF,
137 atrial fibrillation (AF), myocardial infarction (MI), and ischemic stroke were excluded,
138 as well as those with missing baseline levels of triglyceride (TG) or fasting blood
139 glucose (FBG).

140

141 Data for the Hong Kong cohort were extracted retrospectively from the Clinical Data
142 Analysis and Reporting System (CDARS), an administrative electronic medical records
143 database that records the basic demographics, diagnoses, selected procedures,
144 medication prescriptions, and selected laboratory measurements of all patients that
145 attended public healthcare institutions in Hong Kong which serve an estimated 90% of
146 the population¹⁸. Diagnoses in CDARS were recorded using International Classification
147 of Diseases, Ninth revision (ICD-9) codes regardless of the time of data entry, as ICD-
148 10 has not been implemented in CDARS to date. The ICD-9 codes used for identifying
149 comorbid conditions and the outcome (HF) were summarized in **Table S1**. CDARS has
150 been extensively used in prior studies and has been shown to have good diagnostic

151 coding accuracy^{19, 20}. As only retrospective, deidentified data were used, the
152 requirement for individual patient consent has been waived. For this study, adult
153 patients (18 years old or above) attending a family medicine clinic in Hong Kong during
154 the years 2000-2003 with at least one set of paired FBG and fasting TG levels at
155 baseline were included. Patients with a history of ischemic heart disease, stroke, HF,
156 AF, or cancer were excluded, as well as those who were pregnant at the time of inclusion,
157 and those with missing baseline low-density lipoprotein cholesterol (LDL-C), high-
158 density lipoprotein cholesterol (HDL-C), and total cholesterol levels.

159

160 *Data collection and definitions*

161 The data collected and definitions used in this study were detailed in **Supplementary**
162 **Methods**^{17, 21, 22}. The TyG index was calculated as $\ln [\text{fasting TG (mg/dl)} \times \text{FBG (mg/dl)} / 2]$ ²³.

164

165 *Outcomes and follow-up*

166 In the Kailuan cohort, all subjects were followed from the baseline examination until
167 the date of onset of HF, date of death, or end of follow-up (December 31st, 2019),
168 whichever came first. HF was diagnosed by experienced cardiologists in accordance
169 with the guidelines of the European Society of Cardiology²⁴. Incident HF cases were
170 derived from the Municipal Social Insurance Institutions, hospital discharge register,
171 and death certificates.

172

173 In the Hong Kong cohort, all patients were followed up from inclusion until the first
174 recorded diagnosis of HF, death, or the end of follow-up (December 31st, 2019),
175 whichever came first. HF was identified using ICD-9 codes as summarized in **Table S1**.

176

177 *Two-sample MR analysis*

178 Mendelian randomization is built upon three main assumptions²⁵. First, single-
179 nucleotide polymorphisms (SNPs) selected as instrumental variables should be robustly
180 associated with the risk factor. Second, no association should exist between genetic
181 variants and confounders. Third, genetic variants should affect outcome only through
182 the risk factor.

183

184 TyG index-associated variants that reached genome-wide significance ($P < 5 \times 10^{-8}$)
185 were retrieved from a previous GWAS¹⁶. In brief, the identified GWAS included
186 273,368 subjects from the United Kingdom Biobank, who were aged 40-69 and free
187 from diabetes mellitus and lipid metabolism disorders¹⁶. These SNPs were further
188 pruned by linkage disequilibrium with $R^2 < 0.01$ and those that were significantly
189 associated with TG or glucose were also excluded. In total, 192 IVs were selected for
190 TyG index initially. Summary statistics data for the associations of TyG index-
191 associated SNPs with HF were extracted from the published GWAS performed by the
192 Heart Failure Molecular Epidemiology for Therapeutic Targets (HERMES) Consortium
193 on 47,309 cases and 930,014 controls of European ancestry²⁶. HF cases from 26 cohorts
194 of the HERMES Consortium were identified based on the clinical diagnosis of HF of

195 any etiology with no specific criteria for left ventricular ejection fraction. Details of
196 subject selection were published elsewhere²⁶.

197

198 *Statistical analysis*

199 Continuous variables were presented as mean \pm standard deviation (SD) or median with
200 interquartile range (IQR) depending on their distribution. Categorical variables were
201 presented as frequencies and percentages.

202

203 Kaplan-Meier curves were used to visualize the cumulative incidence of HF across
204 quartiles of the TyG index. The association between baseline TyG index and the risk of
205 incident HF was analyzed using the Cox proportional hazards model, with hazard ratios
206 (HR) with 95% confidence intervals (CI) as the summary statistics. The Cox regression
207 was performed with a staged approach, as detailed in **Supplementary Methods**. The
208 association between the risks of HF and the observed spectrum of TyG index was also
209 modelled and visualized using fractional polynomial curves with full multivariable
210 adjustments. Furthermore, competing risk regression using the Fine and Gray sub-
211 distribution model was performed to address the potentially confounding issue of
212 competing risk, with death from any cause as the competing event. Sub-hazard ratios
213 (SHR) with 95% CI were used as the summary statistics. Sensitivity analyses were
214 conducted by excluding subjects with less than two-year follow-up time, and, separately,
215 those with medications at baseline.

216

217 *A priori* subgroup analyses were performed for age (<65 vs ≥65), gender (male vs
218 female), diabetes (yes vs no), hypertension (yes vs no), dyslipidemia (yes vs no) for
219 both cohorts, and, for the Kailuan cohort, for obesity (yes vs no), and hs-CRP level (<1
220 mg/dl vs ≥1 mg/dl).

221

222 To combine the results from the two cohorts, we extracted hazard ratios from the fully
223 adjusted model and performed a meta-analysis using the inverse variance method with
224 random effects to estimate the association between TyG index, both as categorical and
225 continuous variables, and the risk of incident HF.

226

227 In the MR analysis, the summary exposure and outcome data were first harmonized,
228 and SNPs significantly associated with incident HF were excluded. Causal effects of
229 TyG index on HF were estimated by the inverse-variance weighted (IVW) method.
230 Weighted median, MR-Egger, and pleiotropy residual sum and outlier (MR-PRESSO)
231 methods were used for supplementary analyses. Directional pleiotropy was assessed by
232 MR-Egger intercepts and heterogeneity among genetic variants was evaluated by
233 Cochran's *Q* test.

234

235 To test the validity of causal effects estimates, multivariable MR (MVMR) using the
236 IVW method was conducted to further investigate the direct causal effect of TyG index
237 on HF after adjusting for confounders including BMI²⁷, SBP²⁸, DBP²⁸, LDL-c²⁹, and
238 HDL-c²⁹. An additional sensitivity analysis was performed by excluding any SNP

239 significantly associated with those confounders.

240

241 All statistical analyses for the Kailuan and Hong Kong cohorts were conducted using
242 SAS version 9.4 (SAS Institute, Inc., Cary, NC), Stata 16.1 software (StataCorp,
243 College Station, TX), and/or RevMan (Version 5.1; Cochrane Collaboration, Oxford,
244 UK). The MR analyses were performed by the TwoSampleMR, MR-PRESSO and
245 MVMR packages with R version 4.0.2. All p values were two-sided, with $p < 0.05$
246 considered statistically significant.

247

248 **Results**

249 Of the 101,510 subjects who took part in the Kailuan study, 95,996 subjects were
250 analyzed after applying the exclusion criteria (**Figure S1**). For the Hong Kong cohort,
251 24,338 patients were identified for inclusion, and 19,345 patients were analyzed after
252 applying the exclusion criteria (**Figure S2**). **Table 1** and **Table 2** shows the baseline
253 characteristics of subjects according to the baseline TyG index quartiles of two cohorts.

254

255 In the Kailuan cohort, there were 2,726 cases (2.8%) of incident HF over a mean follow-
256 up of 12.3 ± 2.2 years, with an overall incidence rate of 2.3 (95% CI 2.2-2.4) cases per
257 1000 person years. In the Hong Kong cohort, there were 1,709 cases (7.0%) of incident
258 HF over a mean follow-up of 16.2 ± 4.3 years, with an overall incidence rate of 5.5 (95%
259 CI 5.3-5.8) cases per 1000 person years. Over the study duration, 10,825 subjects
260 (11.3%) in the Kailuan cohort died (9,985 (10.1%) without developing HF), while 6,372

261 patients (32.9%) in the Hong Kong cohort died (4,996 (25.8%) without developing HF).

262

263 *Associations between the TyG index and the risk of incident HF*

264 **Table 3** and **Table 4** show the associations between the TyG index, assessed both as a
265 categorial and continuous variable, with the respective risks of incident HF in the
266 Kailuan and Hong Kong cohorts. The cumulative incidence of incident HF for the
267 Kailuan and the Hong Kong cohort is shown in **Figures 1A** and **1B**, respectively. After
268 fully adjusting for potential confounders, patients in the highest quartile of the TyG
269 index had significantly higher risks of incident HF than those in the lowest quartile in
270 both the Kailuan (HR 1.23 (95% CI 1.09-1.39), $P < 0.001$) and Hong Kong (HR 1.21
271 (95% CI 1.04-1.40), $P = 0.007$) cohorts. Similarly, every unit increment in the TyG
272 index was associated with a 17% and a 13% increase in the risk of HF in the Kailuan
273 (HR 1.17 (95% CI 1.10-1.24), $P < 0.001$) and Hong Kong (HR 1.13 (95% CI 1.05-1.22),
274 $P < 0.001$) cohorts, respectively. Fractional polynomial curves with full multivariable
275 adjustment (**Figure S3**) showed a possible threshold effect in the prognostic value of
276 the TyG index, with a lower TyG index showing no significant association with the risk
277 of incident HF, and a higher TyG index showing a grossly linear relationship with the
278 said risk. This was consistent with the multivariable Cox regression analysis as shown
279 in **Tables 3 and 4** with TyG index analyzed as quartiles. Competing risk regression
280 using the Fine and Gray sub-distribution model with death from any cause as the
281 competing event also showed positive associations between a higher TyG index and a
282 high risk of incident HF (**Tables 3 and 4**). Sensitivity analyses produced consistent and

283 similar results (**Tables 3 and 4**).

284

285 Results of subgroup analyses are shown in **Figure 2A** and **Figure 2B** for the Kailuan
286 and Hong Kong cohorts, respectively. Generally, the TyG index, analyzed as a
287 continuous variable, was positively associated with the risk of HF across various
288 subgroups. There was significant interaction between gender and the TyG index in the
289 Kailuan cohort (P for interaction = 0.02), but not in the Hong Kong cohort (P for
290 interaction = 0.11). The association between TyG index and the risk of incident HF was
291 more prominent in female subjects than in male subjects in both cohorts [HR 1.21 (95%
292 CI 1.02 - 1.47) for female vs. 1.15 (95% CI 1.08 - 1.23) for male in the Kailuan cohort,
293 and 1.22 (95% CI 1.10 - 1.64) vs. 1.05 (95% CI 0.94 - 1.17) in the Hong Kong cohort].

294

295 A random-effect meta-analysis combining the results from the two cohorts showed that
296 the risk of incident HF of subjects in the highest quartile of the TyG index was 22%
297 higher (95% CI 11% - 34%, $P < 0.0001$; **Figure 3A**) than those in the lowest quartile,
298 with every unit increment of the TyG index being associated with a 15% increase in the
299 risk of incident HF (95% CI 10% - 21%, $P < 0.00001$; **Figure 3B**). Similarly, subjects in
300 the highest quartile of the TyG index had a 25% (95% CI 13% - 37%) increase in the
301 sub-hazard of incident HF.

302

303 *Two-Sample MR analysis*

304 The associations between genetically determined TyG index and the risk of incident HF
305 as estimated by two-sample MR are presented in **Figure 4**. Analysis using the IVW
306 method demonstrated that genetic predisposition to increased TyG index was
307 significantly associated with an increased risk of incident HF (OR 1.27, 95% CI 1.15 -
308 1.40, $P < 0.001$). The Cochran's Q statistic indicated significant heterogeneity across
309 SNPs, while no indication of directional pleiotropy was found by MR-Egger intercept
310 (**Table S3**). The association remained consistent when using complementary methods
311 for analysis, including weighted median, MR-Egger and MRPRESSO (**Figure 4**).

312
313 To verify the causal effect of TyG index on HF, we performed multivariable MR
314 analysis by adjusting for HF risk factors, including BMI, blood pressure, and lipids.
315 The association remained stable after adjusting for single risk factors (**Table S4**) and in
316 a fully adjusted model (OR 1.20, 95% CI 1.02-1.41, $P = 0.03$; **Figure 4**). Furthermore,
317 results of the sensitivity analysis, in which 32 SNPs with potential pleiotropy were
318 excluded, confirmed the positive association between genetically determined TyG
319 index and HF risk (OR 1.19, 95% CI 1.05 - 1.35, $P = 0.01$).

320

321 **Discussion**

322 Utilizing observational data from two large Chinese cohorts and a two-sample MR
323 analysis based on a public GWAS dataset, this study demonstrated that a high TyG
324 index was an independent and causal risk factor for incident HF in the general
325 population.

326

327 Previous studies have found independent associations between TyG index and risks of
328 atherosclerotic cardiovascular diseases, including myocardial infarction and ischemic
329 stroke^{23, 30}. In a recent analysis of data from the Atherosclerosis Risk in Communities
330 (ARIC) study, Huang *et al.* also reported an association between higher TyG index and
331 higher risk of incident HF in an American population, with every standard deviation's
332 increase in TyG index (corresponding to a TyG index of 0.6) associated with a 15%
333 increase in risk³¹. Our study confirmed these findings in two larger cohorts from distinct
334 geographical regions in China. Unlike the ARIC study which was restricted to subjects
335 between the ages of 45-64 years old, our study included adult patients across the full
336 age range. As such, our study more closely reflects real-life practice, and our findings
337 are thus more directly generalizable.

338

339 Importantly, utilizing MR of GWAS data, we demonstrated that the association between
340 TyG and HF was causal by nature. Although the exact underlying mechanism for the
341 association between TyG index and HF remains to be confirmed by further molecular
342 studies, the well-established relationship between TyG index and insulin resistance
343 suggests that insulin resistance may at least be an important driver of such association¹⁰.
344 This was further reinforced by the results from the Kailuan cohort showing that the
345 association between TyG index and HF was independent of chronic inflammation, as
346 well as previous studies observing associations between insulin resistance and higher
347 risks of incident HF independent of myocardial ischaemia³²⁻³⁴. Insulin resistance may

348 lead to excessive circulating free fatty acids and triglycerides, which induces cardiac
349 lipotoxicity by generating toxic lipid intermediates, and decreases cardiac efficiency by
350 increasing fatty acid oxidation^{35, 36}. Insulin resistance is also associated with
351 disturbances of the systemic metabolic and inflammatory milieu, including increased
352 concentrations of proinflammatory cytokines, adipokines, and catecholamines, which
353 may trigger low-grade inflammation and chronic hypercatecholaminemia that result in
354 detrimental effects on cardiac function³⁷. Furthermore, insulin resistance is involved in
355 the maladaptive activation of the renin-angiotensin-aldosterone system, with chronic
356 hyperinsulinaemia inducing increased release of angiotensinogen from adipose tissue
357 and upregulation of angiotensin II receptor expression, eventually resulting in adverse
358 cardiac remodeling and dysfunction³⁸. Nonetheless, the mechanisms between insulin
359 resistance and HF are incompletely understood to date, and remain an important area
360 of further research.

361

362 Another major finding of the present study is that the association between TyG index
363 and the risk of HF was stronger in females than in males. Between-gender differences
364 are common in cardiovascular medicine. Previous studies have shown that women with
365 disorders of glucose metabolism have a greater risk of coronary heart disease than
366 men^{30, 39}. HF caused by obesity, diabetes, or metabolic syndrome was also found to be
367 more common in women⁴⁰. These suggest that between-gender differences in molecular
368 mechanisms, particularly those in hormonal axes, may not only influence glucose and
369 lipid metabolism, but also energy metabolism in the heart and, thereby, cardiac function.

370 Females are known to be less likely than males to develop insulin resistance⁴¹ but are
371 at higher risk of diabetic cardiomyopathy⁴², implying that females may be more
372 susceptible to cardiac damage induced by insulin resistance. Gender differences in
373 nitric oxide synthase (NOS) activity and signaling, which are critical in metabolic
374 regulation and in modulating responses to insulin resistance, are thought to be central
375 to these observations⁴³. The higher baseline levels of NOS in females predisposes to
376 higher levels of uncoupled NOS on exposure to oxidative stress, which exacerbates the
377 effects of insulin resistance, such as myocardial fibrosis and hypertrophy⁴³.
378 Additionally, considering that the mean age of subjects in this study implied that the
379 female subjects were mostly postmenopausal, the postmenopausal decline in the
380 protective effects of estrogen may contribute to gender differences in the susceptibility
381 to insulin resistance-induced cardiac damage⁴⁰. Notwithstanding the existing evidence
382 as discussed above, further studies exploring the gender differences in susceptibility to
383 insulin resistance-induced cardiac damage should provide important insights and better
384 understanding of diabetic cardiomyopathy.

385

386 Having derived consistent findings from two geographically distinct regions in China,
387 our results suggest that the TyG index, as a surrogate marker of insulin resistance, may
388 be widely applicable and prognostically useful regardless of geographical region and
389 ethnicity. As subjects with prevalent major cardiovascular diseases were excluded from
390 the present study, the analyzed cohorts had relatively low cardiovascular risks. Our
391 results supported the TyG index as a potentially viable and effective tool for

392 cardiovascular risk stratification in the general population. Of note, insulin resistance
393 in many previous studies was measured by the Homeostatic Model Assessment for
394 Insulin Resistance (HOMA-IR) which requires measurements of fasting insulin and
395 glucose^{32, 33}. However, measuring insulin levels is expensive, and the HOMA-IR has
396 been mostly confined to research uses with low clinical utilization. In contrast, the TyG
397 index is simple to measure, has been validated against the euglycemic-
398 hyperinsulinemic clamp test which is considered the gold standard for measuring
399 insulin resistance¹⁰, and may outperform the HOMA-IR in identifying insulin
400 resistance⁴⁴. It has also been shown to be excellent at detecting insulin resistance in
401 non-diabetic patients⁴⁵, which is important as insulin resistance and its associated
402 cardiovascular damage precedes overt type II diabetes mellitus⁴⁶. The TyG index may
403 therefore facilitate recognition of patients at elevated risk of incident HF, for which
404 efficacious measures for primary prevention exist⁴.

405

406 *Strengths and limitations*

407 The strengths of our study included the large sample size, long follow-up time, and
408 having demonstrated reproducible results across two independent observational cohorts
409 and MR analysis. Our findings were further strengthened by multiple subgroup and
410 sensitivity analyses yielding largely consistent results. To the best of the authors'
411 knowledge, this was one of the first studies demonstrating causality between higher
412 TyG index and higher risk of incident HF. Nonetheless, some limitations must be noted.
413 First, we were unable to compare the predictive power of different methods for

414 assessing insulin resistance in our observational study, since fasting insulin levels were
415 unavailable for most subjects. Second, inherent to all observational studies, there may
416 be residual or unmeasured confounders that we were not able to address. Nonetheless,
417 we have included multiple important risk factors for incident HF in the multivariable
418 regression models, and the numerous sensitivity analyses yielded consistent results
419 which reinforced the validity of our findings. Third, the MR analysis was restricted to
420 patients of European descent to reduce bias from population stratification, which may
421 limit extrapolation of our MR results to other populations. Nevertheless, given that
422 associations between TyG index and the risk of incident HF observed in a recent report
423 in an American cohort (the ARIC study) were comparable to our findings as observed
424 in Chinese cohorts, the causality established by our MR analysis is likely true in
425 Chinese patients as well. Fourth, no information was available about the subtype of
426 incident HF. Given the different metabolic mechanisms contributing to the pathogenesis
427 of different types of HF⁴⁷, further research in this regard is warranted. Fifth, diagnoses
428 of the Hong Kong cohort were identified using ICD-9 codes and could not be
429 individually adjudicated due to the retrospective, deidentified nature of the database, as
430 well as the large sample size. Regardless, all diagnostic codes were entered by treating
431 clinicians, who were completely independent of the authors. CDARS has also been
432 shown to have good coding accuracy, specifically for cardiovascular outcomes²⁰.

433

434 **Conclusion**

435 As observed from two large, geographically distinct Chinese cohorts, a higher TyG

436 index was independently associated with higher risk of incident HF. MR analysis
437 demonstrated that the association was likely causal in nature. Further studies are
438 warranted to confirm our findings and fully elucidate the underlying biological
439 mechanisms.

440

441 **Acknowledgements**

442 The authors appreciate all the subjects involved in this study, their families, and the
443 members of the survey team from the Kailuan community.

444

445 **Author contributions**

446 Xintao Li and Jeffrey Shi Kai Chan designed this study, conducted the main analysis,
447 visualized the results, and wrote the first draft of the manuscript. Bo Guan, Shi Peng,
448 Xiaoyu Wu, Yan Hiu Athena Lee, Jeremy Man Ho Hui, Danish Iltaf Satti, Shek Long
449 Tsang, Shouling Wu, Jiandong Zhou, Songwen Chen, Gary Tse, and Shaowen Liu
450 reviewed and edited the article. All authors contributed to the article significantly and
451 approved the submitted version.

452

453 **Funding Sources**

454 This work was supported by the National Natural Science Foundation of China (Grant
455 No. 81970273).

456

457 **Disclosures:**

458 None.

459 **References**

- 460 1. Ziaeian B and Fonarow GC. Epidemiology and aetiology of heart failure. *Nat*
461 *Rev Cardiol.* 2016;13:368-78.
- 462 2. McDonagh TA, Metra M, Adamo M, Gardner RS, Baumbach A, Böhm M, Burri
463 H, Butler J, Čelutkienė J, Chioncel O, Cleland JGF, Coats AJS, Crespo-Leiro MG,
464 Farmakis D, Gilard M, Heymans S, Hoes AW, Jaarsma T, Jankowska EA, Lainscak
465 M, Lam CSP, Lyon AR, McMurray JJV, Mebazaa A, Mindham R, Muneretto C,
466 Francesco Piepoli M, Price S, Rosano GMC, Ruschitzka F and Kathrine Skibelund
467 A. 2021 ESC Guidelines for the diagnosis and treatment of acute and chronic heart
468 failure. *Eur Heart J.* 2021;42:3599-3726.
- 469 3. de Boer RA, Naylor M, deFilippi CR, Enserro D, Bhambhani V, Kizer JR, Blaha
470 MJ, Brouwers FP, Cushman M, Lima JAC, Bahrami H, van der Harst P, Wang TJ,
471 Gansevoort RT, Fox CS, Gaggin HK, Kop WJ, Liu K, Vasani RS, Psaty BM, Lee DS,
472 Hillege HL, Bartz TM, Benjamin EJ, Chan C, Allison M, Gardin JM, Januzzi JL, Jr.,
473 Shah SJ, Levy D, Herrington DM, Larson MG, van Gilst WH, Gottdiener JS, Bertoni
474 AG and Ho JE. Association of Cardiovascular Biomarkers With Incident Heart
475 Failure With Preserved and Reduced Ejection Fraction. *JAMA Cardiol.* 2018;3:215-
476 224.
- 477 4. Greene SJ and Butler J. Primary Prevention of Heart Failure in Patients With
478 Type 2 Diabetes Mellitus. *Circulation.* 2019;139:152-154.
- 479 5. Ho KL, Karwi QG, Connolly D, Pherwani S, Ketema EB, Ussher JR and
480 Lopaschuk GD. Metabolic, structural and biochemical changes in diabetes and the

- 481 development of heart failure. *Diabetologia*. 2022;65:411-423.
- 482 6. Kishi S, Gidding SS, Reis JP, Colangelo LA, Venkatesh BA, Armstrong AC,
483 Isogawa A, Lewis CE, Wu C, Jacobs DR, Jr., Liu K and Lima JA. Association of Insulin
484 Resistance and Glycemic Metabolic Abnormalities With LV Structure and Function
485 in Middle Age: The CARDIA Study. *JACC Cardiovasc Imaging*. 2017;10:105-114.
- 486 7. Riehle C and Abel ED. Insulin Signaling and Heart Failure. *Circ Res*.
487 2016;118:1151-69.
- 488 8. Velez M, Kohli S and Sabbah HN. Animal models of insulin resistance and
489 heart failure. *Heart Fail Rev*. 2014;19:1-13.
- 490 9. Antuna-Puente B, Disse E, Rabasa-Lhoret R, Laville M, Capeau J and Bastard
491 JP. How can we measure insulin sensitivity/resistance? *Diabetes Metab*.
492 2011;37:179-88.
- 493 10. Guerrero-Romero F, Simental-Mendía LE, González-Ortiz M, Martínez-
494 Abundis E, Ramos-Zavala MG, Hernández-González SO, Jacques-Camarena O
495 and Rodríguez-Morán M. The product of triglycerides and glucose, a simple
496 measure of insulin sensitivity. Comparison with the euglycemic-hyperinsulinemic
497 clamp. *J Clin Endocrinol Metab*. 2010;95:3347-51.
- 498 11. Ding X, Wang X, Wu J, Zhang M and Cui M. Triglyceride-glucose index and
499 the incidence of atherosclerotic cardiovascular diseases: a meta-analysis of cohort
500 studies. *Cardiovasc Diabetol*. 2021;20:76.
- 501 12. Zou S, Yang C, Shen R, Wei X, Gong J, Pan Y, Lv Y and Xu Y. Association
502 Between the Triglyceride-Glucose Index and the Incidence of Diabetes in People

503 With Different Phenotypes of Obesity: A Retrospective Study. *Front Endocrinol*
504 *(Lausanne)*. 2021;12:784616.

505 13. Smith GD and Ebrahim S. 'Mendelian randomization': can genetic
506 epidemiology contribute to understanding environmental determinants of
507 disease? *Int J Epidemiol*. 2003;32:1-22.

508 14. Larsson SC, Burgess S and Michaëlsson K. Association of Genetic Variants
509 Related to Serum Calcium Levels With Coronary Artery Disease and Myocardial
510 Infarction. *Jama*. 2017;318:371-380.

511 15. Li X, Peng S, Guan B, Chen S, Zhou G, Wei Y, Gong C, Xu J, Lu X, Zhang X and
512 Liu S. Genetically Determined Inflammatory Biomarkers and the Risk of Heart
513 Failure: A Mendelian Randomization Study. *Front Cardiovasc Med*. 2021;8:734400.

514 16. Si S, Li J, Li Y, Li W, Chen X, Yuan T, Liu C, Li H, Hou L, Wang B and Xue F.
515 Causal Effect of the Triglyceride-Glucose Index and the Joint Exposure of Higher
516 Glucose and Triglyceride With Extensive Cardio-Cerebrovascular Metabolic
517 Outcomes in the UK Biobank: A Mendelian Randomization Study. *Front*
518 *Cardiovasc Med*. 2020;7:583473.

519 17. Wu S, Huang Z, Yang X, Zhou Y, Wang A, Chen L, Zhao H, Ruan C, Wu Y, Xin
520 A, Li K, Jin C and Cai J. Prevalence of ideal cardiovascular health and its relationship
521 with the 4-year cardiovascular events in a northern Chinese industrial city. *Circ*
522 *Cardiovasc Qual Outcomes*. 2012;5:487-93.

523 18. Kong X, Yang Y, Gao J, Guan J, Liu Y, Wang R, Xing B, Li Y and Ma W. Overview
524 of the health care system in Hong Kong and its referential significance to mainland

- 525 China. *J Chin Med Assoc.* 2015;78:569-73.
- 526 19. Chan JSK, Satti DI, Lee YHA, Hui JMH, Lee TTL, Chou OHI, Wai AKC, Ciobanu
527 A, Liu Y, Liu T, Roever L, Biondi-Zoccai G, Zhang Q, Cheung BMY, Zhou J and Tse
528 G. High visit-to-visit cholesterol variability predicts heart failure and adverse
529 cardiovascular events: a population-based cohort study. *Eur J Prev Cardiol.* 2022.
- 530 20. Wong AY, Root A, Douglas IJ, Chui CS, Chan EW, Ghebremichael-
531 Weldeselassie Y, Siu CW, Smeeth L and Wong IC. Cardiovascular outcomes
532 associated with use of clarithromycin: population based study. *Bmj.*
533 2016;352:h6926.
- 534 21. Inker LA, Astor BC, Fox CH, Isakova T, Lash JP, Peralta CA, Kurella Tamura M
535 and Feldman HI. KDOQI US commentary on the 2012 KDIGO clinical practice
536 guideline for the evaluation and management of CKD. *Am J Kidney Dis.*
537 2014;63:713-35.
- 538 22. Inker LA, Eneanya ND, Coresh J, Tighiouart H, Wang D, Sang Y, Crews DC,
539 Doria A, Estrella MM, Froissart M, Grams ME, Greene T, Grubb A, Gudnason V,
540 Gutiérrez OM, Kalil R, Karger AB, Mauer M, Navis G, Nelson RG, Poggio ED, Rodby
541 R, Rossing P, Rule AD, Selvin E, Seegmiller JC, Shlipak MG, Torres VE, Yang W,
542 Ballew SH, Couture SJ, Powe NR and Levey AS. New Creatinine- and Cystatin C-
543 Based Equations to Estimate GFR without Race. *N Engl J Med.* 2021;385:1737-
544 1749.
- 545 23. Wang A, Wang G, Liu Q, Zuo Y, Chen S, Tao B, Tian X, Wang P, Meng X, Wu
546 S, Wang Y and Wang Y. Triglyceride-glucose index and the risk of stroke and its

547 subtypes in the general population: an 11-year follow-up. *Cardiovasc Diabetol*.

548 2021;20:46.

549 24. Swedberg K, Cleland J, Dargie H, Drexler H, Follath F, Komajda M, Tavazzi L,

550 Smiseth OA, Gavazzi A, Haverich A, Hoes A, Jaarsma T, Korewicki J, Lévy S, Linde

551 C, Lopez-Sendon JL, Nieminen MS, Piérard L and Remme WJ. Guidelines for the

552 diagnosis and treatment of chronic heart failure: executive summary (update

553 2005): The Task Force for the Diagnosis and Treatment of Chronic Heart Failure

554 of the European Society of Cardiology. *Eur Heart J*. 2005;26:1115-40.

555 25. Burgess S, Scott RA, Timpson NJ, Davey Smith G and Thompson SG. Using

556 published data in Mendelian randomization: a blueprint for efficient identification

557 of causal risk factors. *Eur J Epidemiol*. 2015;30:543-52.

558 26. Shah S, Henry A, Roselli C, Lin H, Sveinbjörnsson G, Fatemifar G, Hedman Å K,

559 Wilk JB, Morley MP, Chaffin MD, Helgadottir A, Verweij N, Dehghan A, Almgren P,

560 Andersson C, Aragam KG, Ärnlöv J, Backman JD, Biggs ML, Bloom HL, Brandimarto

561 J, Brown MR, Buckbinder L, Carey DJ, Chasman DI, Chen X, Chen X, Chung J,

562 Chutkow W, Cook JP, Delgado GE, Denaxas S, Doney AS, Dörr M, Dudley SC, Dunn

563 ME, Engström G, Esko T, Felix SB, Finan C, Ford I, Ghanbari M, Ghasemi S, Giedraitis

564 V, Giulianini F, Gottdiener JS, Gross S, Guðbjartsson DF, Gutmann R, Haggerty CM,

565 van der Harst P, Hyde CL, Ingelsson E, Jukema JW, Kavousi M, Khaw KT, Kleber

566 ME, Køber L, Koekemoer A, Langenberg C, Lind L, Lindgren CM, London B, Lotta

567 LA, Lovering RC, Luan J, Magnusson P, Mahajan A, Margulies KB, März W,

568 Melander O, Mordi IR, Morgan T, Morris AD, Morris AP, Morrison AC, Nagle MW,

569 Nelson CP, Niessner A, Niiranen T, O'Donoghue ML, Owens AT, Palmer CNA, Parry
570 HM, Perola M, Portilla-Fernandez E, Psaty BM, Rice KM, Ridker PM, Romaine SPR,
571 Rotter JI, Salo P, Salomaa V, van Setten J, Shalaby AA, Smelser DT, Smith NL,
572 Stender S, Stott DJ, Svensson P, Tammesoo ML, Taylor KD, Teder-Laving M,
573 Teumer A, Thorgeirsson G, Thorsteinsdottir U, Torp-Pedersen C, Trompet S, Tyl B,
574 Uitterlinden AG, Veluchamy A, Völker U, Voors AA, Wang X, Wareham NJ,
575 Waterworth D, Weeke PE, Weiss R, Wiggins KL, Xing H, Yerges-Armstrong LM, Yu
576 B, Zannad F, Zhao JH, Hemingway H, Samani NJ, McMurray JJV, Yang J, Visscher
577 PM, Newton-Cheh C, Malarstig A, Holm H, Lubitz SA, Sattar N, Holmes MV,
578 Cappola TP, Asselbergs FW, Hingorani AD, Kuchenbaecker K, Ellinor PT, Lang CC,
579 Stefansson K, Smith JG, Vasan RS, Swerdlow DI and Lumbers RT. Genome-wide
580 association and Mendelian randomisation analysis provide insights into the
581 pathogenesis of heart failure. *Nature communications*. 2020;11:163.

582 27. Locke AE, Kahali B, Berndt SI, Justice AE, Pers TH, Day FR, Powell C, Vedantam
583 S, Buchkovich ML, Yang J, Croteau-Chonka DC, Esko T, Fall T, Ferreira T,
584 Gustafsson S, Kutalik Z, Luan J, Mägi R, Randall JC, Winkler TW, Wood AR,
585 Workalemahu T, Faul JD, Smith JA, Zhao JH, Zhao W, Chen J, Fehrmann R, Hedman
586 Å K, Karjalainen J, Schmidt EM, Absher D, Amin N, Anderson D, Beekman M, Bolton
587 JL, Bragg-Gresham JL, Buyske S, Demirkan A, Deng G, Ehret GB, Feenstra B, Feitosa
588 MF, Fischer K, Goel A, Gong J, Jackson AU, Kanoni S, Kleber ME, Kristiansson K,
589 Lim U, Lotay V, Mangino M, Leach IM, Medina-Gomez C, Medland SE, Nalls MA,
590 Palmer CD, Pasko D, Pechlivanis S, Peters MJ, Prokopenko I, Shungin D, Stančákov

591 á A, Strawbridge RJ, Sung YJ, Tanaka T, Teumer A, Trompet S, van der Laan SW,
592 van Setten J, Van Vliet-Ostaptchouk JV, Wang Z, Yengo L, Zhang W, Isaacs A,
593 Albrecht E, Ärnlöv J, Arscott GM, Attwood AP, Bandinelli S, Barrett A, Bas IN, Bellis
594 C, Bennett AJ, Berne C, Blagieva R, Blüher M, Böhringer S, Bonnycastle LL, Böttcher
595 Y, Boyd HA, Bruinenberg M, Caspersen IH, Chen YI, Clarke R, Daw EW, de Craen
596 AJM, Delgado G, Dimitriou M, Doney ASF, Eklund N, Estrada K, Eury E, Folkersen
597 L, Fraser RM, Garcia ME, Geller F, Giedraitis V, Gigante B, Go AS, Golay A, Goodall
598 AH, Gordon SD, Gorski M, Grabe HJ, Grallert H, Grammer TB, Gräßler J, Grönberg
599 H, Groves CJ, Gusto G, Haessler J, Hall P, Haller T, Hallmans G, Hartman CA,
600 Hassinen M, Hayward C, Heard-Costa NL, Helmer Q, Hengstenberg C, Holmen O,
601 Hottenga JJ, James AL, Jeff JM, Johansson Å, Jolley J, Juliusdottir T, Kinnunen L,
602 Koenig W, Koskenvuo M, Kratzer W, Laitinen J, Lamina C, Leander K, Lee NR,
603 Lichtner P, Lind L, Lindström J, Lo KS, Lobbens S, Lorbeer R, Lu Y, Mach F,
604 Magnusson PKE, Mahajan A, McArdle WL, McLachlan S, Menni C, Merger S,
605 Mihailov E, Milani L, Moayyeri A, Monda KL, Morken MA, Mulas A, Müller G,
606 Müller-Nurasyid M, Musk AW, Nagaraja R, Nöthen MM, Nolte IM, Pilz S, Rayner
607 NW, Renstrom F, Rettig R, Ried JS, Ripke S, Robertson NR, Rose LM, Sanna S,
608 Scharnagl H, Scholtens S, Schumacher FR, Scott WR, Seufferlein T, Shi J, Smith AV,
609 Smolonska J, Stanton AV, Steinthorsdottir V, Stirrups K, Stringham HM, Sundström
610 J, Swertz MA, Swift AJ, Syvänen AC, Tan ST, Tayo BO, Thorand B, Thorleifsson G,
611 Tyrer JP, Uh HW, Vandenput L, Verhulst FC, Vermeulen SH, Verweij N, Vonk JM,
612 Waite LL, Warren HR, Waterworth D, Weedon MN, Wilkens LR, Willenborg C,

613 Wilsgaard T, Wojczynski MK, Wong A, Wright AF, Zhang Q, Brennan EP, Choi M,
614 Dastani Z, Drong AW, Eriksson P, Franco-Cereceda A, Gådén JR, Gharavi AG,
615 Goddard ME, Handsaker RE, Huang J, Karpe F, Kathiresan S, Keildson S, Kiryluk K,
616 Kubo M, Lee JY, Liang L, Lifton RP, Ma B, McCarroll SA, McKnight AJ, Min JL,
617 Moffatt MF, Montgomery GW, Murabito JM, Nicholson G, Nyholt DR, Okada Y,
618 Perry JRB, Dorajoo R, Reinmaa E, Salem RM, Sandholm N, Scott RA, Stolk L,
619 Takahashi A, Tanaka T, van 't Hooft FM, Vinkhuyzen AAE, Westra HJ, Zheng W,
620 Zondervan KT, Heath AC, Arveiler D, Bakker SJL, Beilby J, Bergman RN, Blangero
621 J, Bovet P, Campbell H, Caulfield MJ, Cesana G, Chakravarti A, Chasman DI, Chines
622 PS, Collins FS, Crawford DC, Cupples LA, Cusi D, Danesh J, de Faire U, den Ruijter
623 HM, Dominiczak AF, Erbel R, Erdmann J, Eriksson JG, Farrall M, Felix SB, Ferrannini
624 E, Ferrières J, Ford I, Forouhi NG, Forrester T, Franco OH, Gansevoort RT, Gejman
625 PV, Gieger C, Gottesman O, Gudnason V, Gyllensten U, Hall AS, Harris TB,
626 Hattersley AT, Hicks AA, Hindorff LA, Hingorani AD, Hofman A, Homuth G,
627 Hovingh GK, Humphries SE, Hunt SC, Hyppönen E, Illig T, Jacobs KB, Jarvelin MR,
628 Jöckel KH, Johansen B, Jousilahti P, Jukema JW, Jula AM, Kaprio J, Kastelein JJP,
629 Keinanen-Kiukaanniemi SM, Kiemeny LA, Knekt P, Kooner JS, Kooperberg C,
630 Kovacs P, Kraja AT, Kumari M, Kuusisto J, Lakka TA, Langenberg C, Marchand LL,
631 Lehtimäki T, Lyssenko V, Männistö S, Marette A, Matisse TC, McKenzie CA,
632 McKnight B, Moll FL, Morris AD, Morris AP, Murray JC, Nelis M, Ohlsson C,
633 Oldehinkel AJ, Ong KK, Madden PAF, Pasterkamp G, Peden JF, Peters A, Postma
634 DS, Pramstaller PP, Price JF, Qi L, Raitakari OT, Rankinen T, Rao DC, Rice TK, Ridker

635 PM, Rioux JD, Ritchie MD, Rudan I, Salomaa V, Samani NJ, Saramies J, Sarzynski
636 MA, Schunkert H, Schwarz PEH, Sever P, Shuldiner AR, Sinisalo J, Stolk RP, Strauch
637 K, Tönjes A, Trégouët DA, Tremblay A, Tremoli E, Virtamo J, Vohl MC, Völker U,
638 Waeber G, Willemsen G, Witteman JC, Zillikens MC, Adair LS, Amouyel P,
639 Asselbergs FW, Assimes TL, Bochud M, Boehm BO, Boerwinkle E, Bornstein SR,
640 Bottinger EP, Bouchard C, Cauchi S, Chambers JC, Chanock SJ, Cooper RS, de
641 Bakker PIW, Dedoussis G, Ferrucci L, Franks PW, Froguel P, Groop LC, Haiman CA,
642 Hamsten A, Hui J, Hunter DJ, Hveem K, Kaplan RC, Kivimaki M, Kuh D, Laakso M,
643 Liu Y, Martin NG, März W, Melbye M, Metspalu A, Moebus S, Munroe PB, Njølstad
644 I, Oostra BA, Palmer CNA, Pedersen NL, Perola M, Pérusse L, Peters U, Power C,
645 Quertermous T, Rauramaa R, Rivadeneira F, Saaristo TE, Saleheen D, Sattar N,
646 Schadt EE, Schlessinger D, Slagboom PE, Snieder H, Spector TD, Thorsteinsdottir
647 U, Stumvoll M, Tuomilehto J, Uitterlinden AG, Uusitupa M, van der Harst P, Walker
648 M, Wallaschofski H, Wareham NJ, Watkins H, Weir DR, Wichmann HE, Wilson JF,
649 Zanen P, Borecki IB, Deloukas P, Fox CS, Heid IM, O'Connell JR, Strachan DP,
650 Stefansson K, van Duijn CM, Abecasis GR, Franke L, Frayling TM, McCarthy MI,
651 Visscher PM, Scherag A, Willer CJ, Boehnke M, Mohlke KL, Lindgren CM,
652 Beckmann JS, Barroso I, North KE, Ingelsson E, Hirschhorn JN, Loos RJF and
653 Speliotes EK. Genetic studies of body mass index yield new insights for obesity
654 biology. *Nature*. 2015;518:197-206.

655 28. Evangelou E, Warren HR, Mosen-Ansorena D, Mifsud B, Pazoki R, Gao H,
656 Ntritsos G, Dimou N, Cabrera CP, Karaman I, Ng FL, Evangelou M, Witkowska K,

657 Tzanis E, Hellwege JN, Giri A, Velez Edwards DR, Sun YV, Cho K, Gaziano JM,
658 Wilson PWF, Tsao PS, Kovesdy CP, Esko T, Mägi R, Milani L, Almgren P, Boutin T,
659 Debette S, Ding J, Giulianini F, Holliday EG, Jackson AU, Li-Gao R, Lin WY, Luan J,
660 Mangino M, Oldmeadow C, Prins BP, Qian Y, Sargurupremraj M, Shah N,
661 Surendran P, Thériault S, Verweij N, Willems SM, Zhao JH, Amouyel P, Connell J,
662 de Mutsert R, Doney ASF, Farrall M, Menni C, Morris AD, Noordam R, Paré G,
663 Poulter NR, Shields DC, Stanton A, Thom S, Abecasis G, Amin N, Arking DE, Ayers
664 KL, Barbieri CM, Batini C, Bis JC, Blake T, Bochud M, Boehnke M, Boerwinkle E,
665 Boomsma DI, Bottinger EP, Braund PS, Brumat M, Campbell A, Campbell H,
666 Chakravarti A, Chambers JC, Chauhan G, Ciullo M, Cocca M, Collins F, Cordell HJ,
667 Davies G, de Borst MH, de Geus EJ, Deary IJ, Deelen J, Del Greco MF, Demirkale
668 CY, Dörr M, Ehret GB, Elosua R, Enroth S, Erzurumluoglu AM, Ferreira T, Frånberg
669 M, Franco OH, Gandin I, Gasparini P, Giedraitis V, Gieger C, Girotto G, Goel A, Gow
670 AJ, Gudnason V, Guo X, Gyllensten U, Hamsten A, Harris TB, Harris SE, Hartman
671 CA, Havulinna AS, Hicks AA, Hofer E, Hofman A, Hottenga JJ, Huffman JE, Hwang
672 SJ, Ingelsson E, James A, Jansen R, Jarvelin MR, Joehanes R, Johansson Å, Johnson
673 AD, Joshi PK, Jousilahti P, Jukema JW, Jula A, Kähönen M, Kathiresan S, Keavney
674 BD, Khaw KT, Knekt P, Knight J, Kolcic I, Kooner JS, Koskinen S, Kristiansson K,
675 Kutalik Z, Laan M, Larson M, Launer LJ, Lehne B, Lehtimäki T, Liewald DCM, Lin L,
676 Lind L, Lindgren CM, Liu Y, Loos RJJ, Lopez LM, Lu Y, Lyytikäinen LP, Mahajan A,
677 Mamasoula C, Marrugat J, Marten J, Milaneschi Y, Morgan A, Morris AP, Morrison
678 AC, Munson PJ, Nalls MA, Nandakumar P, Nelson CP, Niiranen T, Nolte IM, Nutile

679 T, Oldehinkel AJ, Oostra BA, O'Reilly PF, Org E, Padmanabhan S, Palmas W, Palotie
680 A, Pattie A, Penninx B, Perola M, Peters A, Polasek O, Pramstaller PP, Nguyen QT,
681 Raitakari OT, Ren M, Rettig R, Rice K, Ridker PM, Ried JS, Riese H, Ripatti S, Robino
682 A, Rose LM, Rotter JI, Rudan I, Ruggiero D, Saba Y, Sala CF, Salomaa V, Samani NJ,
683 Sarin AP, Schmidt R, Schmidt H, Shrine N, Siscovick D, Smith AV, Snieder H, Söber
684 S, Sorice R, Starr JM, Stott DJ, Strachan DP, Strawbridge RJ, Sundström J, Swertz
685 MA, Taylor KD, Teumer A, Tobin MD, Tomaszewski M, Toniolo D, Traglia M,
686 Trompet S, Tuomilehto J, Tzourio C, Uitterlinden AG, Vaez A, van der Most PJ, van
687 Duijn CM, Vergnaud AC, Verwoert GC, Vitart V, Völker U, Vollenweider P, Vuckovic
688 D, Watkins H, Wild SH, Willemsen G, Wilson JF, Wright AF, Yao J, Zemunik T, Zhang
689 W, Attia JR, Butterworth AS, Chasman DI, Conen D, Cucca F, Danesh J, Hayward C,
690 Howson JMM, Laakso M, Lakatta EG, Langenberg C, Melander O, Mook-Kanamori
691 DO, Palmer CNA, Risch L, Scott RA, Scott RJ, Sever P, Spector TD, van der Harst P,
692 Wareham NJ, Zeggini E, Levy D, Munroe PB, Newton-Cheh C, Brown MJ, Metspalu
693 A, Hung AM, O'Donnell CJ, Edwards TL, Psaty BM, Tzoulaki I, Barnes MR, Wain LV,
694 Elliott P and Caulfield MJ. Genetic analysis of over 1 million people identifies 535
695 new loci associated with blood pressure traits. *Nat Genet.* 2018;50:1412-1425.
696 29. Willer CJ, Schmidt EM, Sengupta S, Peloso GM, Gustafsson S, Kanoni S, Ganna
697 A, Chen J, Buchkovich ML, Mora S, Beckmann JS, Bragg-Gresham JL, Chang HY,
698 Demirkan A, Den Hertog HM, Do R, Donnelly LA, Ehret GB, Esko T, Feitosa MF,
699 Ferreira T, Fischer K, Fontanillas P, Fraser RM, Freitag DF, Gurdasani D, Heikkilä K,
700 Hyppönen E, Isaacs A, Jackson AU, Johansson Å, Johnson T, Kaakinen M, Kettunen

701 J, Kleber ME, Li X, Luan J, Lyytikäinen LP, Magnusson PKE, Mangino M, Mihailov E,
702 Montasser ME, Müller-Nurasyid M, Nolte IM, O'Connell JR, Palmer CD, Perola M,
703 Petersen AK, Sanna S, Saxena R, Service SK, Shah S, Shungin D, Sidore C, Song C,
704 Strawbridge RJ, Surakka I, Tanaka T, Teslovich TM, Thorleifsson G, Van den Herik
705 EG, Voight BF, Volcik KA, Waite LL, Wong A, Wu Y, Zhang W, Absher D, Asiki G,
706 Barroso I, Been LF, Bolton JL, Bonnycastle LL, Brambilla P, Burnett MS, Cesana G,
707 Dimitriou M, Doney ASF, Döring A, Elliott P, Epstein SE, Ingi Eyjolfsson G, Gigante
708 B, Goodarzi MO, Grallert H, Gravito ML, Groves CJ, Hallmans G, Hartikainen AL,
709 Hayward C, Hernandez D, Hicks AA, Holm H, Hung YJ, Illig T, Jones MR, Kaleebu
710 P, Kastelein JJP, Khaw KT, Kim E, Klopp N, Komulainen P, Kumari M, Langenberg
711 C, Lehtimäki T, Lin SY, Lindström J, Loos RJF, Mach F, McArdle WL, Meisinger C,
712 Mitchell BD, Müller G, Nagaraja R, Narisu N, Nieminen TVM, Nsubuga RN,
713 Olafsson I, Ong KK, Palotie A, Papamarkou T, Pomilla C, Pouta A, Rader DJ, Reilly
714 MP, Ridker PM, Rivadeneira F, Rudan I, Ruukonen A, Samani N, Scharnagl H,
715 Seeley J, Silander K, Stančáková A, Stirrups K, Swift AJ, Tiret L, Uitterlinden AG, van
716 Pelt LJ, Vedantam S, Wainwright N, Wijmenga C, Wild SH, Willemsen G, Wilsgaard
717 T, Wilson JF, Young EH, Zhao JH, Adair LS, Arveiler D, Assimes TL, Bandinelli S,
718 Bennett F, Bochud M, Boehm BO, Boomsma DI, Borecki IB, Bornstein SR, Bovet P,
719 Burnier M, Campbell H, Chakravarti A, Chambers JC, Chen YI, Collins FS, Cooper
720 RS, Danesh J, Dedoussis G, de Faire U, Feranil AB, Ferrières J, Ferrucci L, Freimer
721 NB, Gieger C, Groop LC, Gudnason V, Gyllenstein U, Hamsten A, Harris TB,
722 Hingorani A, Hirschhorn JN, Hofman A, Hovingh GK, Hsiung CA, Humphries SE,

723 Hunt SC, Hveem K, Iribarren C, Järvelin MR, Jula A, Kähönen M, Kaprio J, Kesäniemi
724 A, Kivimaki M, Kooner JS, Koudstaal PJ, Krauss RM, Kuh D, Kuusisto J, Kyvik KO,
725 Laakso M, Lakka TA, Lind L, Lindgren CM, Martin NG, März W, McCarthy MI,
726 McKenzie CA, Meneton P, Metspalu A, Moilanen L, Morris AD, Munroe PB,
727 Njølstad I, Pedersen NL, Power C, Pramstaller PP, Price JF, Psaty BM, Quertermous
728 T, Rauramaa R, Saleheen D, Salomaa V, Sanghera DK, Saramies J, Schwarz PEH,
729 Sheu WH, Shuldiner AR, Siegbahn A, Spector TD, Stefansson K, Strachan DP, Tayo
730 BO, Tremoli E, Tuomilehto J, Uusitupa M, van Duijn CM, Vollenweider P, Wallentin
731 L, Wareham NJ, Whitfield JB, Wolffenbuttel BHR, Ordovas JM, Boerwinkle E,
732 Palmer CNA, Thorsteinsdottir U, Chasman DI, Rotter JI, Franks PW, Ripatti S,
733 Cupples LA, Sandhu MS, Rich SS, Boehnke M, Deloukas P, Kathiresan S, Mohlke
734 KL, Ingelsson E and Abecasis GR. Discovery and refinement of loci associated with
735 lipid levels. *Nat Genet.* 2013;45:1274-1283.

736 30. Tian X, Zuo Y, Chen S, Liu Q, Tao B, Wu S and Wang A. Triglyceride-glucose
737 index is associated with the risk of myocardial infarction: an 11-year prospective
738 study in the Kailuan cohort. *Cardiovasc Diabetol.* 2021;20:19.

739 31. Huang R, Lin Y, Ye X, Zhong X, Xie P, Li M, Zhuang X and Liao X. Triglyceride-
740 glucose index in the development of heart failure and left ventricular dysfunction:
741 analysis of the ARIC study. *Eur J Prev Cardiol.* 2022.

742 32. Banerjee D, Biggs ML, Mercer L, Mukamal K, Kaplan R, Barzilay J, Kuller L, Kizer
743 JR, Djousse L, Tracy R, Zieman S, Lloyd-Jones D, Siscovick D and Carnethon M.
744 Insulin resistance and risk of incident heart failure: Cardiovascular Health Study.

745 *Circ Heart Fail.* 2013;6:364-70.

746 33. Vardeny O, Gupta DK, Claggett B, Burke S, Shah A, Loehr L, Rasmussen-Torvik
747 L, Selvin E, Chang PP, Aguilar D and Solomon SD. Insulin resistance and incident
748 heart failure the ARIC study (Atherosclerosis Risk in Communities). *JACC Heart Fail.*
749 2013;1:531-6.

750 34. Wamil M, Coleman RL, Adler AI, McMurray JJV and Holman RR. Increased Risk
751 of Incident Heart Failure and Death Is Associated With Insulin Resistance in People
752 With Newly Diagnosed Type 2 Diabetes: UKPDS 89. *Diabetes Care.* 2021;44:1877-
753 1884.

754 35. Kolwicz SC, Jr., Purohit S and Tian R. Cardiac metabolism and its interactions
755 with contraction, growth, and survival of cardiomyocytes. *Circ Res.* 2013;113:603-
756 16.

757 36. Yazıcı D and Sezer H. Insulin Resistance, Obesity and Lipotoxicity. *Adv Exp*
758 *Med Biol.* 2017;960:277-304.

759 37. Nishida K and Otsu K. Inflammation and metabolic cardiomyopathy.
760 *Cardiovasc Res.* 2017;113:389-398.

761 38. Samuelsson AM, Bollano E, Mobini R, Larsson BM, Omerovic E, Fu M,
762 Waagstein F and Holmäng A. Hyperinsulinemia: effect on cardiac mass/function,
763 angiotensin II receptor expression, and insulin signaling pathways. *Am J Physiol*
764 *Heart Circ Physiol.* 2006;291:H787-96.

765 39. Peters SA, Huxley RR and Woodward M. Diabetes as risk factor for incident
766 coronary heart disease in women compared with men: a systematic review and

- 767 meta-analysis of 64 cohorts including 858,507 individuals and 28,203 coronary
768 events. *Diabetologia*. 2014;57:1542-51.
- 769 40. Gerdtts E and Regitz-Zagrosek V. Sex differences in cardiometabolic disorders.
770 *Nat Med*. 2019;25:1657-1666.
- 771 41. Tramunt B, Smati S, Grandgeorge N, Lenfant F, Arnal JF, Montagner A and
772 Gourdy P. Sex differences in metabolic regulation and diabetes susceptibility.
773 *Diabetologia*. 2020;63:453-461.
- 774 42. Toedebusch R, Belenchia A and Pulakat L. Diabetic Cardiomyopathy: Impact
775 of Biological Sex on Disease Development and Molecular Signatures. *Front Physiol*.
776 2018;9:453.
- 777 43. Murphy E, Amanakis G, Fillmore N, Parks RJ and Sun J. Sex Differences in
778 Metabolic Cardiomyopathy. *Cardiovasc Res*. 2017;113:370-377.
- 779 44. Vasques AC, Novaes FS, de Oliveira Mda S, Souza JR, Yamanaka A, Pareja JC,
780 Tambascia MA, Saad MJ and Geloneze B. TyG index performs better than HOMA
781 in a Brazilian population: a hyperglycemic clamp validated study. *Diabetes Res*
782 *Clin Pract*. 2011;93:e98-e100.
- 783 45. Toro-Huamanchumo CJ, Urrunaga-Pastor D, Guarnizo-Poma M, Lazaro-
784 Alcantara H, Paico-Palacios S, Pantoja-Torres B, Ranilla-Seguín VDC and Benites-
785 Zapata VA. Triglycerides and glucose index as an insulin resistance marker in a
786 sample of healthy adults. *Diabetes Metab Syndr*. 2019;13:272-277.
- 787 46. Ormazabal V, Nair S, Elfeky O, Aguayo C, Salomon C and Zuñiga FA.
788 Association between insulin resistance and the development of cardiovascular

789 disease. *Cardiovasc Diabetol*. 2018;17:122.

790 47. Lakhani I, Leung KSK, Tse G and Lee APW. Novel Mechanisms in Heart Failure

791 With Preserved, Midrange, and Reduced Ejection Fraction. *Front Physiol*.

792 2019;10:874.

793

794

795 **Table 1. The baseline characteristics of subjects in the Kailuan Cohort.**

Characteristics	Total	TyG index			
		Q1	Q2	Q3	Q4
		3.60-8.18	8.18-8.57	8.57-9.05	9.05-12.51
Subjects (n)	95,996	23,997	24,000	24,001	23,998
TyG index	8.65±0.69	7.85±0.27	8.38±0.11	8.79±0.14	9.58±0.46
Age, years	51.4±12.5	50.2±13.7	51.4±12.7	52.1±12.2	52.0±11.4
Male, n (%)	76,364(79.6)	17,655(73.6)	18,994(79.1)	19,501(81.3)	20,214(84.2)
Height (cm)	167.4±7.0	166.7±7.0	167.5±7.0	167.6±7.0	167.9±6.9
BMI (kg/m ²)	25.0±3.5	23.4±3.2	24.6±3.3	25.6±3.3	26.4±3.4
Completed high school, n (%)	18,746(19.5)	5673(23.6)	4483(18.7)	4448(18.5)	4142(17.3)
Income≥800¥, n (%)	13,133(13.7)	3563(14.9)	3093(12.9)	3234(13.5)	3243(13.5)
Daily Smoker, n (%)	28,675(29.9)	6902(28.8)	6741(28.1)	7173(29.9)	7859(32.8)
Daily alcohol user, n (%)	16,725(17.4)	3891(16.2)	3834(16.0)	4125(17.2)	4875(20.3)
Activity physical activity, n (%)	13,935(14.5)	3654(15.2)	3356(14.0)	3535(14.7)	3390(14.1)
Systolic BP, mmHg	131±21	124±20	129±20	132±21	136±21
Diastolic BP, mmHg	83±12	80±11	83±11	85±1	87±12
FBG, mmol/L	5.47±1.67	4.80±0.68	5.09±0.76	5.44±1.11	6.54±2.66
TC, mg/dL	190.9±44.1	179.3±35.6	190.2±37.3	197.9±39.0	196.4±58.1

LDL-c, mg/dL	90.6±35.2	84.3±35.8	92.2±33.3	94.7±33.99	91.2±36.7
HDL-c, mg/dL	59.8±15.5	60.5±15.7	60.3±14.8	59.3±15.1	59.0±16.3
TG, mg/dL	112.4 (78.8-170.8)	62.0 (51.3-72.6)	97.4 (86.7-108.0)	137.2 (120.4-158.4)	245.1 (192.9-346.0)
hs-CRP, mg/dl	0.80 (0.30-2.16)	0.60 (0.21-1.84)	0.72 (0.29-1.99)	0.88 (0.33-2.16)	1.02 (0.40-2.61)
eGFR, mL/min/1.73m ²	82.3±25.7	85.8±26.8	81.8±25.4	81.4±22.8	80.5±27.2
Diabetes Mellitus, n (%)	8408(8.8)	223(0.9)	542(2.3)	1699(7.1)	5944(24.8)
Hypertension, n (%)	4,1072(42.8)	6847(28.5)	9651(40.2)	11316(47.2)	13258(55.3)
Anti-hypertensive drugs, n (%)	9453(9.9)	1440(6.0)	1915(8.0)	2714(11.3)	3384(14.1)
Lipid-lowering drugs, n (%)	709(0.7)	81(0.3)	130(0.5)	168(0.7)	330(1.4)
Diabetes drugs, n (%)	2048(2.1)	121(0.5)	209(0.9)	442(1.8)	1273(5.3)

796 Abbreviations: BMI: body mass index; BP: blood pressure; FBG: fasting blood glucose;

797 TC: total cholesterol; LDL-c: low density lipoprotein cholesterol; HDL-c: low density

798 lipoprotein cholesterol; TG: triglyceride; eGFR: estimated glomerular filtration rate;

799 hs-CRP: high sensitivity C-reactive protein.

800

801 **Table 2. The baseline characteristics of subjects in the cohort from Hong Kong.**

Characteristics	Total	TyG index			
		Q1	Q2	Q3	Q4
		4.78-6.89	6.90-7.31	7.32-7.80	7.81-11.38
Subjects (n)	19,345	4,861	4,859	4,812	4,813
TyG index	7.36±0.68	6.54±0.27	7.10±0.12	7.54±0.14	8.26±0.42
Age, years	60.1±12.9	58.1±13.9	60.6±12.9	60.6±12.3	61.3±12.2
Male, n (%)	7738 (40.0)	1780 (36.6)	1971 (40.6)	1935 (40.2)	2052 (42.6)
Systolic BP, mmHg	139±21	136±21	139±20	140±20	142±20
Diastolic BP, mmHg	76±11	75±12	76±11	77±11	77±11
FBG, mmol/L	6.79±3.18	5.35±0.97	5.96±1.41	6.72±2.19	9.16±4.94
TC, mg/dL	208.4±42.0	197.0±39.8	207.4±40.9	212.4±41.1	217.2±43.5
LDL-c, mg/dL	124.7±37.4	119.6±35.5	128.3±37.2	128.5±37.3	122.4±38.9
HDL-c, mg/dL	52.6±14.6	61.0±15.7	53.9±14.0	49.5±12.1	46.0±11.7
TG, mg/dL	124.0 (88.6-179.8)	743.5 (60.2-88.6)	115.1 (98.3-132.0)	160.3 (127.5-189.5)	221.4 (159.4-292.3)
Dyslipidemia, n (%)	9099 (47.0)	1930 (39.7)	2273 (46.8)	2446 (50.8)	2450 (50.9)
Diabetes Mellitus, n (%)	6524(33.7)	559 (11.5)	1138 (23.4)	1816 (37.7)	3011 (62.6)
Hypertension, n (%)	11,809 (61.0)	2591 (53.3)	2974 (61.2)	3037 (63.1)	3207 (66.6)
Chronic kidney disease, n (%)	2930 (15.2)	543 (11.2)	730 (15.0)	744 (15.5)	913 (19.0)

Anti-hypertensive drugs, n (%)	3834 (19.8)	755 (15.5)	990 (20.4)	1011 (21.0)	1078 (22.4)
Lipid-lowering drugs, n (%)	1586 (8.2)	303 (6.2)	373 (7.7)	419 (8.7)	491 (10.2)
Diabetes drugs, n (%)	995 (5.1)	110 (2.3)	194 (4.0)	246 (5.1)	445 (9.3)
Antiplatelets, n (%)	814 (4.2)	159 (3.3)	191 (3.9)	216 (4.5)	248 (5.2)

802

803

Table 3. Association between baseline TyG and incident heart failure in the Kailuan cohort.

	Q1	Q2	Q3	Q4	<i>P</i> for trend	Per unit increment	<i>P</i> value
Number of patients	23,997	24,000	24,001	23,998			
HF cases	497	576	729	924			
Persons	23997	24000	24001	23998			
Person-years	297098	295908	294857	292552			
HF incidence ¹	1.67(1.53-1.83)	1.95(1.79-2.11)	2.47(2.30-2.66)	3.16(2.96-3.37)			
Model 1 ²	1	1.16(1.03-1.31)	1.48(1.32-1.66)	1.90(1.70-2.11)	<0.001	1.44(1.37-1.51)	<0.001
Model 2 ³	1	1.12(1.00-1.27)	1.41(1.26-1.58)	1.90(1.70-2.12)	<0.001	1.47(1.40-1.55)	<0.001
Model 3 ⁴	1	1.00(0.88-1.12)	1.12(1.00-1.26)	1.23(1.09-1.39)	<0.001	1.17(1.10-1.24)	<0.001
Sensitivity analysis							
Sensitivity analysis 1 ⁵	1	1.00(0.88-1.13)	1.14(1.01-1.28)	1.23(1.10-1.41)	<0.001	1.18(1.10-1.25)	<0.001

Sensitivity analysis 2 ⁶	1	0.97(0.84-1.11)	1.11(0.98-1.27)	1.17(1.02-1.34)	0.006	1.13(1.06-1.22)	<0.001
Competing risk regression ⁷	1	1.01(0.90-1.14)	1.14(1.02-1.29)	1.25(1.10-1.41)	<0.001	1.18(1.10-1.25)	<0.001

¹ HF incidence; The incidence rates per 1000 person years with the corresponding 95% confidence intervals are shown

² Model 1: Unadjusted. The hazard ratios with the corresponding 95% confidence intervals are shown.

³ Model 2: Age-sex adjusted. The hazard ratios with the corresponding 95% confidence intervals are shown.

⁴ Model 3: Adjusted for age, gender, education, income, physical activity, smoking status, alcohol intake, diabetes, LDL-c, HDL-c, SBP, DBP, BMI, eGFR, hs-CRP, anti-hypertensive drugs, anti-diabetes drugs, and lipid-lowering drugs. The hazard ratios with the corresponding 95% confidence intervals are shown.

⁵ Sensitivity analysis 1: exclude follow-up time less than 2 years, remained 95,275 subjects with 2,497 HF cases. The hazard ratios with the corresponding 95% confidence intervals are shown.

⁶ Sensitivity analysis 2: exclude subjects with medication at baseline (anti-hypertension drugs, lipid lower drugs, anti-diabetes drugs), remained 85,118 subjects with 2,118 HF cases. The hazard ratios with the corresponding 95% confidence intervals are shown.

⁷ Competing risk regression: sub-hazard ratios with the corresponding 95% confidence intervals are shown.

Table 4. Association between baseline TyG index and incident heart failure in the cohort from Hong Kong.

	Q1	Q2	Q3	Q4	<i>P</i> for trend	Per unit increment	<i>P</i> value
Number of patients	4,861	4,859	4,812	4,813			
HF cases	342	404	454	509			
Persons	4861	4859	4812	4813			
Person-years	79,353	77,644	77,335	75,360			
HF incidence ¹	4.31(3.88-4.79)	5.20(4.72-5.74)	5.87(5.34-6.42)	6.75(6.19-7.37)			
Model 1 ²	1	1.21(1.05-1.40)	1.36(1.19-1.57)	1.58(1.38-1.82)	<0.001	1.30(1.22-1.39)	<0.001
Model 2 ³	1	1.09(0.94-1.26)	1.23(1.07-1.42)	1.39(1.21-1.59)	<0.001	1.23(1.14-1.31)	<0.001
Model 3 ⁴	1	1.07(0.92-1.23)	1.17(1.01-1.35)	1.21(1.04-1.40)	0.007	1.13(1.05-1.22)	0.001
Sensitivity analysis							
Sensitivity analysis 1 ⁵	1	1.07(0.92-1.23)	1.17(1.01-1.35)	1.22(1.05-1.41)	0.005	1.14(1.05-1.23)	0.001

Sensitivity analysis 2 ⁶	1	1.16(0.98-1.37)	1.22(1.03-1.45)	1.29(1.08-1.53)	0.005	1.16(1.06-1.27)	0.001
Competing risk regression ⁷	1	1.06(0.91-1.22)	1.21(1.04-1.40)	1.24(1.07-1.44)	0.001	1.15(1.06-1.24)	<0.001

¹ HF incidence; The incidence rates per 1000 person years with the corresponding 95% confidence intervals are shown

² Model 1: Unadjusted. The hazard ratios with the corresponding 95% confidence intervals are shown.

³ Model 2: Age-sex adjusted. The hazard ratios with the corresponding 95% confidence intervals are shown.

⁴ Model 3: Adjusted for age, sex, hypertension, diabetes mellitus, chronic kidney disease, dyslipidemia, antihypertensives, anti-diabetic drugs, antiplatelets, lipid-lowering drugs. The hazard ratios with the corresponding 95% confidence intervals are shown.

⁵ Sensitivity 1: exclude follow-up time less than 2 years, remained 19,227 subjects with 1,709 HF cases. The hazard ratios with the corresponding 95% confidence intervals are shown.

⁶ Sensitivity 2: exclude those with medications at baseline, remained 14,842 subjects with 1,223 HF cases. The hazard ratios with the corresponding 95% confidence intervals are shown.

⁷ Competing risk regression: sub-hazard ratios with the corresponding 95% confidence intervals are shown.

Figure legends.

Figure 1. Kaplan-Meier curve of the cumulative incidence of incident heart failure for the (A) Kailuan cohort and (B) Hong Kong cohort, stratifying by quartiles of the triglyceride-glucose index.

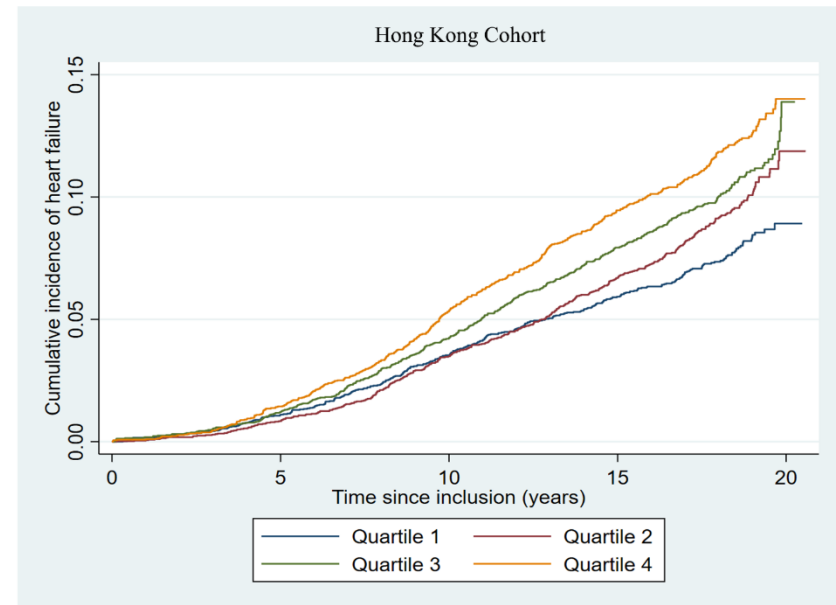
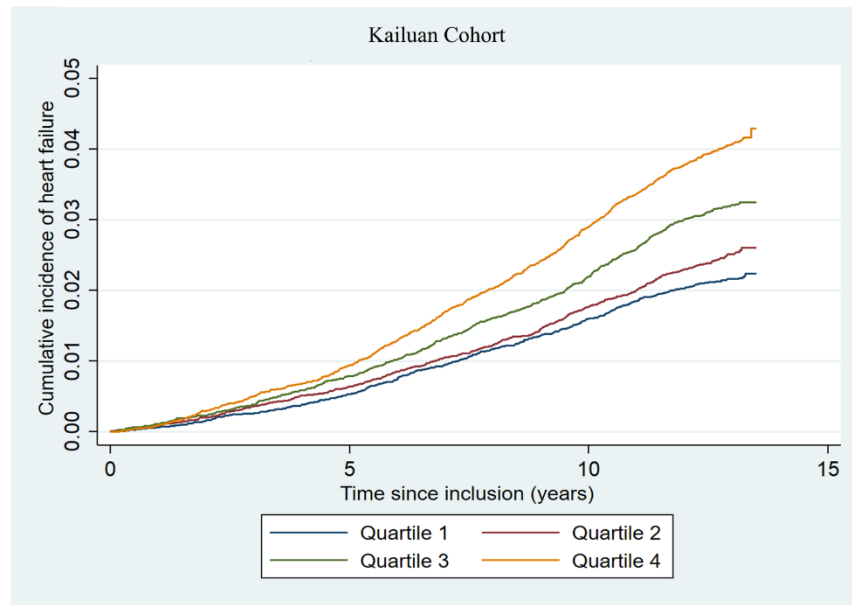


Figure 2. Subgroup analysis of the association between TyG index and incident HF for the (A) Kailuan cohort and (B) Hong Kong cohort. HR: hazard ratio; CI: confidence interval.

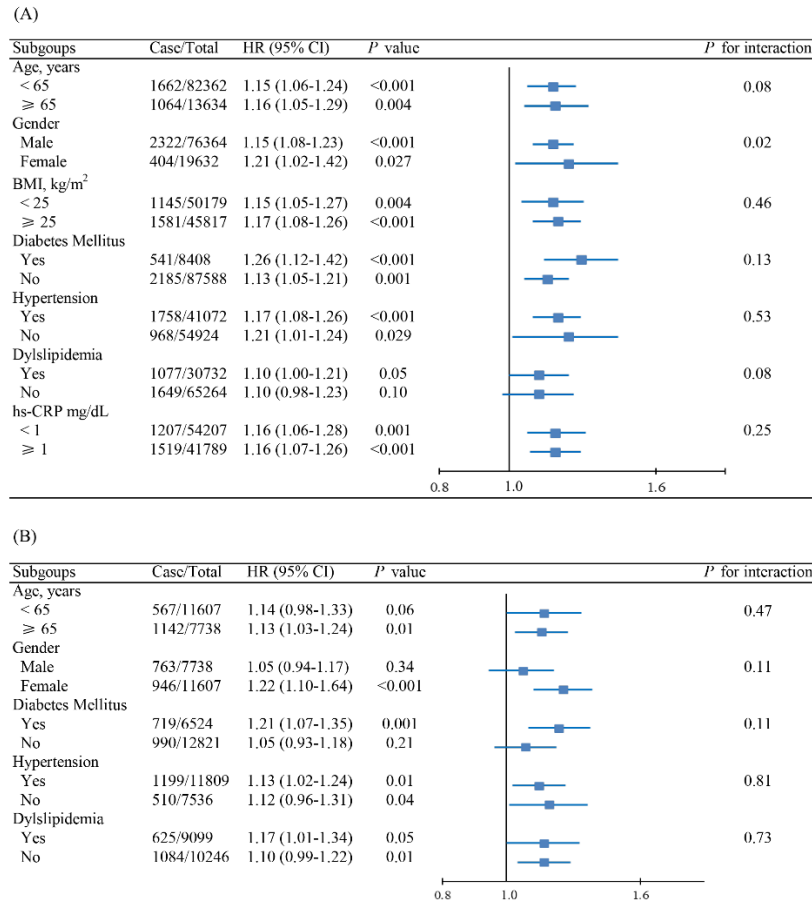


Figure 3. Forest plots for the meta-analysis of the association between TyG index with HF risk. (A) TyG index analyzed as a categorical variable.

(B) TyG index analyzed as a continuous variable.

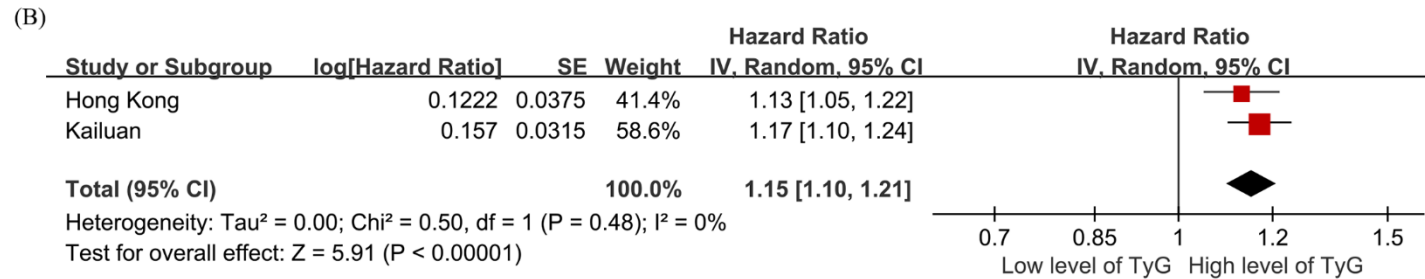
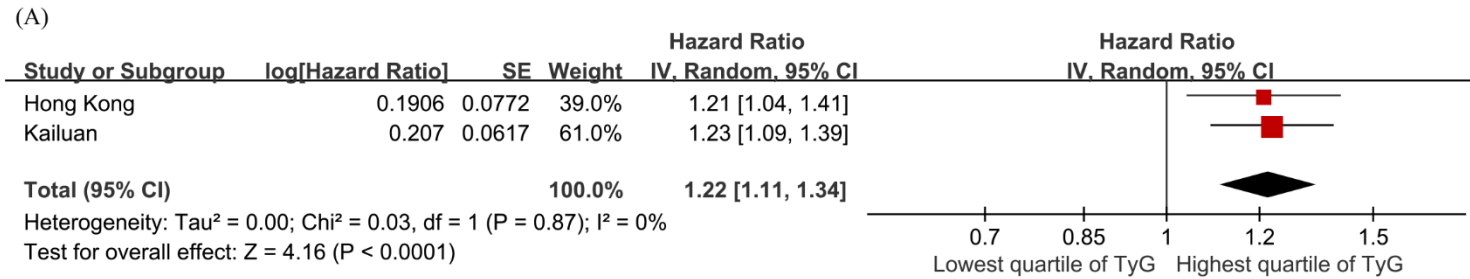


Figure 4. Mendelian randomization (MR) association between genetically determined TyG index and HF. Sensitivity analysis 1: multivariable MR through IVW method after adjusting for cofounders including BMI, SBP, DBP, LDL-c, and HDL-c. Sensitivity analysis 2: MR analysis through IVW after excluding any SNPs significantly associated with those cofounders, including BMI, SBP, DBP, LDL-c, and HDL-c. SNPs: single-nucleotide polymorphisms; OR: odds ratio; IVW: inverse-variance weighted.

