

# **Title:** Predictors of 90-Day Colectomy in Hospitalized Patients Receiving Infliximab for Acute Severe Ulcerative Colitis at a Tertiary Care Center

## **Running Title:** Infliximab for Acute Severe Ulcerative Colitis

### **Authors:**

Jeffrey A. Berinstein, MD, MSc (1,2)\*  
 Neelakanta Anurag Atkuri (3)\*  
 Elliot M. Berinstein MD, MSc (4)  
 Jessica L. Sheehan, MD (1,2)  
 Laura A. Johnson (1)  
 Shirley A. Cohen-Mekelburg MD, MSc (1, 2, 5)  
 Hui Jiang, PhD (6)  
 Nicole I. Wakim, PhD, MS (6)  
 Kelley M. Kidwell, PhD (6)  
 Inbal Billie Nahum-Shani, PhD (7)  
 Robert MD (8)  
 Akbar K. Waljee, MD, MSc (1,2,5)  
 Peter D.R. Higgins, MD, PhD, MSc (1)

\*Authors share primary authorship

- 1) Department of Internal Medicine, Division of Gastroenterology and Hepatology, Michigan Medicine, Ann Arbor, MI, USA.
- 2) Institute for Healthcare Policy and Innovation, University of Michigan, Ann Arbor, MI, USA
- 3) Department of Medicine, Indiana University School of Medicine, Indianapolis, IN, USA
- 4) Department of Medicine, St. Joseph Mercy Ann Arbor Hospital, Ypsilanti, MI, USA
- 5) VA Center for Clinical Management Research, VA Ann Arbor Health Care System, Ann Arbor, MI, USA.
- 6) Department of Biostatistics, School of Public Health, University of Michigan, Ann Arbor, USA.
- 7) Institute for Social Research, University of Michigan, Ann Arbor, Michigan, USA.
- 8) Department of Medicine, Weill Cornell Medical College, New York, New York, USA.

### **Corresponding Author:**

Jeffrey A. Berinstein, MD, MSc  
 jberinst@med.umich.edu,  
 1500 E. Medical Center Drive, Ann Arbor, MI 48109  
 Phone: (734) 936-8596  
 Fax: (734) 936-7392

### **Author Contributions:**

Study concept and design: JAB, PDRH  
 Acquisition: JAB, NAA, EMB, JLS, LAJ

Analysis, or interpretation of data: JAB, EMB, SAC, HJ, NIW, KMK, IBNS, RB, AKW, PDRH

Drafting of the manuscript: JAB, EMB, SAC

Figures: JAB, EMB, SAC, HJ, NIW, KMK, IBNS, AKW, PDRH

Critical revision of the manuscript: All Authors

Final approval: All Authors

### **Disclosures:**

PDRH received consulting fees from AbbVie, Amgen, Pfizer, Eli Lilly. All other authors report no disclosures.

**Support:** PDRH received support from NIH R01 DK125687, NIH T32 DK062708, NIH R01 DK 118154, NIH R01 DK 109032, and NIH P30 DK034933

JAB received support from NIH T32 DK062708

### **Abbreviations:**

ASUC: Acute severe ulcerative colitis; ATI: anti-tumor necrosis factor inhibitor; CI: Confidence intervals; CRP: C-reactive protein; EHR: Electronic medical record; IV: Intravenous; HR: Hazard ratios; UC: ulcerative colitis

**Keywords:** Acute severe ulcerative colitis, colectomy, infliximab

## **ABSTRACT:**

### **BACKGROUND & AIMS:**

Acute severe ulcerative colitis (ASUC) is a life-threatening presentation of ulcerative colitis requiring prompt treatment. Infliximab (IFX) rescue therapy can prevent colectomy in patients with ASUC.

### **METHODS:**

We performed a cohort study of adult patients hospitalized with ASUC between 01/2014 – 02/2021 who received infliximab rescue therapy. Using multivariable logistic regression, baseline and longitudinal laboratory predictors of colectomy within 90 days of index hospitalization were identified and used to develop a risk prediction model and prognostic scoring system to identifying patients at risk for colectomy. Model performance was assessed using area under the receiver operator characteristic curve (AUC) analysis.

### **RESULTS:**

166 patients with ASUC who received infliximab rescue therapy were identified. Overall, 24.7% (n=41) underwent colectomy within 90 days. Multivariate analysis revealed that colectomy within 90 days could be predicted by having a calculated IFX clearance of >53L/d (OR 2.28, 95% CI 0.99, 5.22), a day 0 absolute C-reactive protein (CRP) > 91mg/L (OR 3.49, 95% CI 1.58 to 8.08), a decrease in CRP of < 43% from day 0 to day 3 (OR 4.13, 95% CI 1.84 to 9.94), and a decrease in CRP of < 9% from the day of IFX administration to one day post-IFX administration (OR 4.20, 95% CI 1.74 to 10.4). Using these predictors, two highly accurate prognostic scoring system were developed to identify patients at risk for requiring colectomy both prior to administering infliximab (AUC 0.76) and after administer infliximab rescue therapy (AUC 0.81).

### **CONCLUSION:**

We identified important baseline and longitudinal laboratory predictors of colectomy within 90-days among patients with ASUC receiving infliximab rescue therapy and developed accurate prognostic scores to determine risk of colectomy. These scores can be used risk-stratify patients and facilitate personalized management.

## INTRODUCTION:

Ulcerative Colitis (UC) is a chronic gastrointestinal disorder that affects over one million Americans.<sup>1,2</sup> As many as 30% of patients with UC will require hospitalization for treatment of acute severe ulcerative colitis (ASUC), a life-threatening presentation of UC associated with rapid clinical deterioration, colectomy, and death.<sup>3-5</sup> First-line therapy consists of rapid induction therapy with intravenous (IV) corticosteroids, however, up to 30% of patients with ASUC will not adequately respond to corticosteroids.<sup>6</sup> Infliximab and cyclosporine rescue therapies are effective preventing colectomy among patients with ASUC who have failed to respond to intravenous corticosteroids.<sup>7-9</sup>

Despite the use of rescue therapy, ~30% of patients do not respond to conventional infliximab dosing regimens. Accelerated infliximab induction protocols, where patients receive a second dose of infliximab prior to the typical 14-days, can further reduce the likelihood of colectomy compared to conventional infliximab dosing regimens;<sup>10,11</sup> However, the optimal dosing and timing of infliximab rescue therapy remains uncertain.<sup>12</sup> While infliximab levels tend to correlate with treatment response, colonic protein loss in the setting of severely active disease has been associated with lower infliximab levels, likely decreasing infliximab efficacy in patients with ASUC.<sup>13-15</sup> This is further supported by data demonstrating an association between higher calculated infliximab drug clearance and a higher likelihood of colectomy in patients with ASUC receiving infliximab rescue therapy.<sup>16</sup> A better understanding of the predictors of infliximab treatment response could help decision making related to ASUC treatment. Current models for predicting treatment response, such as the Oxford Criteria, have largely been developed for corticosteroids alone and do not take into consideration the common use of medical rescue therapies (Ex. the Ho criteria includes cyclosporine rescue, but not infliximab rescue).<sup>17-21</sup>

Therefore, we aimed to accurately identify baseline and longitudinal laboratory predictors associated with colectomy within 90-days of admission for patients with ASUC before and after receiving infliximab rescue.

## **MATERIALS AND METHODS:**

### **Study Population**

We identified adult patients 18 years or older who were hospitalized with ASUC between January 2014 and February 2021 at a tertiary referral center and received inpatient infliximab rescue therapy. Patients were included if they had an inpatient encounter associated with a diagnosis of UC based on International Classification of Diseases (ICD) -9 and -10 codes and received both intravenous methylprednisolone and infliximab during that hospitalization. Medical charts were reviewed to confirm a diagnosis of ASUC defined by meeting either Truelove and Witts' criteria, having a C-reactive protein (CRP)  $\geq 4.5$  mg/dL, or having severe endoscopic disease (Endoscopic Mayo Score  $\geq 2$ ).<sup>17,22</sup> Patients received a single dose of rescue infliximab on day 3 of admission according to a standardized ASUC protocol<sup>23</sup> which uses well established criteria to identify which patients are high-risk for failing first-line IV corticosteroids.<sup>17,19,20</sup> Patients who had at least a 20% reduction in CRP three days after their first dose of infliximab and continued to exhibit signs of active disease were offered a second dose if their CRP had not normalized.<sup>23</sup> The University of Michigan Institutional Review Board (HUM00184362) approved this study.

### **Variables and Outcomes**

The primary outcome was colectomy within 90 days of the initial hospitalization date. 90-day colectomy was selected to be concordant with prior landmark clinical trials.<sup>7,24</sup> Patient demographics, UC characteristics, inpatient encounter characteristics, laboratory results, and clinical course and outcome variables were extracted from the electronic medical record (JAB, NAA, and JLS). Infliximab clearance was calculated using a published formula (1) which included albumin concentration (g/dL) at baseline, anti-tumor necrosis factor inhibitor (ATI) status (with 0 signifying the absence of ATI by lab evaluation or at baseline if patient had no prior anti-tumor necrosis factor exposure), and sex (with 1 corresponding to females and 0 to males).<sup>16,25</sup>

$$(1) \text{ Influximab clearance} = 0.407 * (\text{albumin}/4.1)^{-1.54} * (1.471)^{\text{ATI}} * (0.764)^{\text{sex}}$$

## Statistical Analysis

Descriptive statistics were reported as means and standard deviations for continuous variables with a normal distribution, as medians and interquartile range for non-normally distributed continuous variables, and as frequency and percentages for categorical variables. Missing laboratory values were imputed by random forest imputation method using the *{missforest}* package in R.<sup>26</sup> Patients who underwent colectomy within the first four days of admission were not included in our analysis, as using a prognostic model to predict an outcome that has already occurred will lead to overfitting (this reduced our sample size by 3). We calculated the area under the curve (AUC) using receiver operating characteristic (ROC) analysis for our baseline and longitudinal laboratory predictors to determine how good each predictor was at classifying between colectomy status. Strong predictors of colectomy (AUC closer to 1) were then evaluated in multivariable regression models. Odds ratios (OR) were used to represent the

association between the predictors and outcome of interest and 95% confidence intervals (95% CI) were reported. Models were adjusted for the severity of UC at presentation by the simultaneous inclusion of well-established predictors of colectomy<sup>3,17,27</sup> and sequential backwards elimination of predictors not significantly associated with our outcome of interest. Multiple models were compared, and the optimal model was selected using the Bayesian information criterion. We also tested whether data collected after before and after INFLIXIMAB dosing would improve the model accuracy. The final model was fit to the entire cohort and model performance (calibration and discrimination) were evaluated using sensitivity, specificity, AUC, and c-statistic. Predictors were evaluated as both continuous and dichotomized variables. Optimal cut-point values for predictor variables were determined according to Youden index using the {cutpointr} package in R which maximizes the sum of the sensitivity and sensitivity of predictor of interest to determine an optimal cut-off value. After fitting the model on the entire dataset, we developed a simplified prognostic scoring system for predicting colectomy risk within 90 days. Our prognostic score was tested with both uniform (1 point per predictor) and variable weighting (based on regression coefficient).<sup>28</sup> The total risk score was calculated by adding each component, and colectomy rates and colectomy risk (using Cox proportional hazards regression and Kaplan-Meier plots) were determined for the various scores. Probability of colectomy was computed at different cut-points for the total score and three categories of risk (low-risk, medium-risk, and high-risk) were developed. Statistical significance was determined by  $p < 0.05$  (two-tailed). All analyses were performed using R version 4.0.3 R Foundation for Statistical Computing, Vienna, Austria).

## **RESULTS:**

### **Study Population:**

Between 2014 to February 2021, 166 patients received intravenous methylprednisolone, followed by rescue infliximab in the hospital for acute severe ulcerative colitis. Baseline characteristics are presented in **Table 1**. Of the 166 included patients, the mean age was 39.5 years, 85 patients (51.2%) were female, 146 patients (88.0%) were white, 130 patients (79.3%) had pancolitis, and 55 patients (33.3%) had reported a prior biologic exposure. Admission characteristics and unadjusted outcomes are presented in **Table 2**. Among the 166 included patients, 16 patients (9.8%) were transferred from an outside hospital, and the mean duration of steroids prior to admission was 15.6 days. The average Truelove and Witts' Score was 3.96 with 152 patients (91.6%) meeting the Truelove and Witt's Criteria for ASUC and all 166 (100%) meeting either Truelove and Witts' criteria, having a CRP  $\geq 4.5\text{mg/dL}$ , or having severe endoscopic disease activity. The mean admission C-reactive protein (CRP) was 100mg/dL, the mean baseline hemoglobin was 11.50g/dL (reflecting both anemia and dehydration upon admission), and the mean baseline calculated infliximab clearance was 0.47 L/d. Seventeen patients (10.2%) had colonic dilation, 12 patients (7.3%) had concomitant *Clostridium difficile* and 4 (2.6%) had concomitant cytomegalovirus detected by biopsy. Sixty-four (38.6%) patients received accelerated infliximab with two doses during admission. Over a mean follow-up of 2.30 years, the colectomy rate was 22.3% (n=37) within 30 days, 24.7% (n=41) within 90 days, 29.5% (n=49) within 6 months, and 31.9% (n=53) within 12 months of admission.

### **Univariate Predictors of Colectomy within 90 Days:**

Data from only 163 patients was used in this analysis, as three patients had colectomy outcomes prior to day 3 of hospitalization. **Figure 1a** illustrates the area of under the curve (AUC) of our baseline and longitudinal laboratory predictors of colectomy within 90 days. Absolute CRP and change in CRP are more accurate predictors of colectomy compared to the



calculated infliximab clearance in ASUC patients receiving infliximab rescue therapy. The AUC for the absolute CRP was higher later in the admission with an AUC 0.73 for CRP on day 3. The AUC for the percent change in CRP was highest from day 0 to day 1 with an AUC of 0.61. The AUC was highest when CRP was measured two days after infliximab administration (AUC 0.63).

### **Multivariable Predictors of Colectomy within 90 Days:**

Two final models were built to determine risk of colectomy within 90 days both before and after infliximab administration (**Supplemental Table 1**). Predictors were evaluated as both continuous and dichotomized variables. The previously described AUC analysis was used to determine the optimal cut-off values which maximize sensitivity and sensitivity for predicting colectomy within 90 days. In the model predicting corticosteroid failure (prior to rescue infliximab administration), significant predictors included baseline infliximab clearance > 0.53L/day (OR 2.28, 95% CI 0.99 to 5.22,  $p = .052$ ), a day 0 CRP of > 91mg/L (OR 3.49, 95% CI 1.56 to 8.08,  $p = .002$ ), and a decrease in CRP < 43% from day 0 to day 3 (OR 4.13, 95% 1.84 to 9.94,  $p < .001$ ). In the model predicting infliximab failure (after rescue infliximab administration), significant predictors included baseline infliximab clearance > 0.53L/day (OR 2.87, 95% CI 1.18 to 7.13,  $p = .020$ ), a day 0 CRP of > 91mg/L (OR 3.09, 95% CI 1.32 to 7.43,  $p = .009$ ), a decrease in CRP < 43% from day 0 to day 3 (OR 3.66, 95% 1.57 to 9.13,  $p = .002$ ), and a decrease in CRP < 9% from the day of infliximab administration to 1-day post-INFLIXIMAB administration (OR 4.20, 95% CI 1.74 to 10.4,  $p = .001$ ). The AUC of our corticosteroid failure model was 0.76 and the AUC of our INFLIXIMAB failure model was 0.81 (**Figure 1B**).

### **Simplified Corticosteroid Failure Prognostic Score:**

Our corticosteroid failure model included: baseline infliximab clearance  $> 0.53\text{L/day}$ , a day 0 CRP of  $> 91\text{mg/L}$ , and a decrease in CRP  $< 43\%$  from day 0 to day 3. The same weight for all variables was chosen with 1 point for each item. This performed better than a slightly more complex model with weights corresponding to coefficients. In our corticosteroid failure model, a score of 0 was considered low-risk, and a score of 1 was considered moderate-risk and a score 2 or 3 was consider high-risk. Proportions of patients undergoing colectomy and rate of colectomy-free survival for each risk score category are illustrated in **Figure 2A** and **Figure 2B**, respectively. 4 (10%) patients in the low-risk group ( $n=41$ ), 10 (14%) in the moderate-risk group ( $n=71$ ) and 24 (47%) in the high-risk group ( $n=51$ ) underwent colectomy with an associated hazard ratio (HR) of 1.50 (95% CI 0.47 to 4.79,  $p = .50$ ) and HR of 6.20 (95% CI 2.15 to 17.9,  $p < .001$ ) for the moderate-risk and high-risk group, respectively.

### **Simplified Infliximab Failure Prognostic Score:**

Our infliximab failure model included baseline infliximab clearance  $> 0.53\text{L/day}$ , a day 0 CRP of  $> 91\text{mg/L}$ , a decrease in CRP  $< 43\%$  from day 0 to day 3 as well as a CRP  $< 9\%$  from the day of infliximab administration to 1-day post- infliximab administration. The same weight for all variables was chosen with 1 point for each item. This performed better than a slightly more complex model with weights corresponding to coefficients. In our infliximab failure model, a score of 0 and 1 was considered low-risk, and a score of 2 was considered moderate-risk and a score 3 or 4 was consider high-risk. Proportions of patients undergoing colectomy and rate of colectomy-free survival for each risk score category are illustrated in **Figure 3A** and **Figure 3B**, respectively. 9 (10%) patients in the low-risk group ( $n=95$ ), 14 (30%) in the moderate-risk group ( $n=47$ ) and 15 (71%) in the high-risk group ( $n=21$ ) underwent colectomy with an associated HR

of 3.62 (95% CI 1.56 to 8.36,  $p = .003$ ) and HR of 12.4 (95% CI 5.40 to 28.7,  $p < .001$ ) for the moderate-risk and high-risk group, respectively.

## DISCUSSION:

In this study we present our experience using infliximab rescue for acute severe ulcerative at a large tertiary care center. Among 166 patients admitted to our institution with ASUC, the colectomy rate was 24.7% ( $n=41$ ) within 90 days of hospitalization. We identified and evaluated multiple baseline and longitudinal laboratory predictors of colectomy including infliximab clearance, as well as absolute CRP and change in CRP at various timepoints throughout the index hospitalization. Using this data, we were able to build two parsimonious multivariable model which informed the development of two prognostic scores identifying patients at risk for colectomy within 90 days both before and after infliximab administration. Based on our data, baseline infliximab clearance  $> 0.53\text{L/day}$ , a day 0 CRP of  $> 91\text{mg/L}$ , a decrease in CRP  $< 43\%$  from day 0 to day 3 as well as a CRP  $< 9\%$  from the day of infliximab administration to 1-day post-infliximab administration were the best predictors of colectomy within 90 days. Our models were highly accurate for predicting colectomy with an AUC of 0.76 for the corticosteroid failure model (prior to infliximab administration) and 0.81 for the infliximab failure model (after infliximab administration). Of note, budding multivariable models significantly enhanced prognostic performance (AUC 0.76-0.81) compared to each univariable predictor (max AUC 0.72) alone.

Our study is unique for several reasons. First, the majority of published prediction scoring systems currently in use were developed in the context of corticosteroid or cyclosporine use.<sup>17,19,29</sup> Even among modern prediction scores, including the one recently derived by the Saint Antoine IBD Network consisting of 270 patients admitted to two hospitals in France with ASUC.

only 10 patients (3.7%) were treated with infliximab rescue therapy. Therefore, it is unknown whether these current risk scores provide an accurate estimate of the risk of colectomy in the context of modern rescue therapies.<sup>18,29</sup> Second, our study looked at a combination of baseline and longitudinal laboratory predictors of treatment response. Accounting for the evolution of patient risk for colectomy over the course of the admission more accurately represents the temporal dynamics of relevant risk factors to more closely mimic real-world healthcare settings. In addition, this will allow us to determine the optimal timing and cut-off of predictors which could be used to identify non-responders early more accurately and administer rescue pharmacotherapy or send for salvage colectomy without missing their “treatment window”. Third, our models are unique in that they calculate risk for colectomy both before and after rescue infliximab administration, as the majority of the models utilized in practice predict colectomy without consideration response to rescue therapy. Fourth, we provide real-world outcomes on the effects of infliximab administration in a large cohort of patients who received rescue infliximab.<sup>30</sup> Our cohort is representative of the patients typically cared for at tertiary care centers in the United States.<sup>29,31</sup>

In our study, four criteria were associated with colectomy within 90 days in multivariable analysis. First, calculated infliximab clearance based on sex, albumin, and the presence of anti-necrosis factor inhibitors has been shown in multiple studies to be associated with the need for colectomy in patients with ASUC.<sup>16</sup> In a study by Battat *et al.*, a cut-off of 0.627 L/d was used, however in our study a cut-off of 0.53L/d was found to better classify colectomy status in our cohort. The observed difference in cut-off is likely related to differences in study populations. Our second, third, and fourth criteria, involve longitudinal measures of CRP namely an absolute cut-off on day 0 of > 91mg/L, a decrease in CRP of < 43% from day 0 to day 3 as well as a CRP

< 9% from the day of infliximab administration to 1-day post- infliximab administration. CRP is a widely used as tailoring variable to base decisions on rescue medication administration and referral to surgery. The Oxford criteria, published in 1996, showed that having greater than eight stools per day or three to eight stools per day and a CRP >45 mg/L on day 3 was associated with an 85% chance of requiring colectomy.<sup>17,19</sup> However our models unique in that it considers both an absolute CRP cutoff on day of admission and percent change in CRP from day 0 to day 3 and that it looks at response to corticosteroids alone and corticosteroids plus rescue infliximab. This allows us to account for patients with a higher starting value and those with adequate improvement without committing them to colectomy if they are on the right trajectory but not falling below an absolute cut-off. Better incorporation of time-varying factors using longitudinal risk stratification machine learning techniques could be used to develop an early warning system to identify patients at risk of deterioration and offer early and a personalized intervention. Classifying patient response profiles according to the risk of failing first-line and rescue treatment could allow us to personalize our approach by initiating therapy with a different mechanism of action. This overall approach would allow providers to tailor the timing and mechanism of therapy to a patient's individual health needs.<sup>32,33</sup>

Our corticosteroid failure and infliximab failure prognostic scores developed in this study has several strengths. First, they are easy to use since it only contains four easily and routinely measured dichotomous variables. Second, the scores were developed in a relatively large cohort with a high AUC. Third, our study identifies important predictors of response to medical therapy in a largely understudied population, patients receiving infliximab rescue, despite widespread use of infliximab rescue in clinical practice.

Our study has several weaknesses. First, our study findings may not be generalizable to other centers since the data are derived from a single large tertiary care center. Second, potential residual confounding due to patient and physician preference cannot be excluded. While we developed a public ASUC protocol in an attempt to standardize care at our center, there were deviations from the protocol based on patient or provider preference. Third, model accuracy might have been improved if we were able to reliably incorporate clinical parameters (such as bowel movements, abdominal pain, etc.); however, these variables are often poorly recorded in the electronic health record and not amenable to automated inclusion into our scoring system. Better incorporation of patient reported outcomes throughout inpatient stays could be valuable for future studies in this area.<sup>34</sup>

In conclusion, in this cohort of 163 analyzed patients received infliximab rescue for acute severe ulcerative colitis at a single tertiary care center, several important baseline, longitudinal laboratory predictors associated with colectomy within 90 days were identified. Based on predictive modeling, four variables including calculated infliximab clearance of  $> 0.53\text{L/day}$ , a day 0 CRP of  $> 91\text{mg/L}$ , a decrease in CRP  $< 43\%$  from day 0 to day 3 as well as a CRP  $< 9\%$  from the day of infliximab administration to 1-day post- infliximab were incorporated into two accurate and easy to use prognostic scoring system that was highly predictive of the colectomy within 90 days of admission. Additional prospective studies are required to confirm the generalizability of these findings.

## TABLES:

Table 1: Baseline Characteristics

	Overall (N=166)
Age, years	39.5 (17.1)
Female	85 (51.2%)
Race	
- White	146 (88.0%)
- Black	9 (5.4%)
- Other	11 (6.6%)
Duration IBD, years	7.0 (10.0)
Distribution	
Proctitis	4 (2.4%)
Left-sided Colitis	30 (18.3%)
Pancolitis	130 (79.3%)
Prior Biologic Use	55 (33.3%)
Number of Prior Biologic Exposure	
1	43 (25.9%)
2	10 (6.0%)
3	6 (3.6%)
Prior Infliximab Exposure	37 (22.3%)
Prior Adalimumab Exposure	25 (15.1%)
Prior Vedolizumab Exposure	13 (7.8%)
Prior Ustekinumab Exposure	0 (0.0%)
Prior Tofacitinib Exposure	4 (2.4%)

Continuous variables are presented as means (standard deviations) for normally distributed data and medians (interquartile range) for non-normally distributed data. Categorical variables are presented as numbers (percentages).

Table 2: Admission Characteristics and Outcomes

	Overall (N=166)
Outside Hospital Transfer	16 (9.8%)
Mean Duration Steroids Prior to Admission (days)	15.6 (43.1)
Truelove Witts Score	3.96 (1.04)
Truelove Witts Met	152 (91.6%)
ASUC Criteria Met	166 (100.0%)
Admission CRP (mg/L)	100.3 (77.4)
Hemoglobin (g/dL)	11.50 (2.28)
Calculated Infliximab Clearance (L/d)	0.47 (0.15)
Colonic Dilation	16 (9.9%)
Endoscopic Mayo Score	
Mayo 2	43 (26.7%)
Mayo 3	118 (73.3%)
Unavailable	5
<i>Clostridium difficile</i>	12 (7.5%)
Cytomegalovirus	4 (2.7%)
Accelerated Rescue Infliximab	64 (38.6%)
Initial Infliximab Dose	
5mg/kg	52 (31.3%)
10mg/kg	114 (68.7%)
Cumulative Infliximab Dose (mg/kg)	11.7 (5.3)
Length of Stay (days)	9.8 (7.2)
30 Day Colectomy	37 (22.3%)
90 Day Colectomy	41 (24.7%)
6 Month Colectomy	49 (29.5%)
1 Year Colectomy	53 (31.9%)
Follow-up (years)	2.3 (1.8)

Continuous variables are presented as means (standard deviations) for normally distributed data and medians (interquartile range) for non-normally distributed data. Categorical variables are presented as numbers (percentages).



## **FIGURES:**

**Figure 1:** Univariable (1A) and Multivariable Model (1B) Performance at Predicting Colectomy within 90 days of Hospitalizations.

**Figure 2:** Corticosteroid Failure Prognostic Score Performance According to Proportion Colectomy (2A) and Calculated Hazard Ratio (2B).

**Figure 3:** Corticosteroid Failure Prognostic Score Performance According to Proportion Colectomy (3A) and Calculated Hazard Ratio (3B).

## REFERENCES:

1. Kappelman MD, Rifas-Shiman SL, Kleinman K, et al. The prevalence and geographic distribution of Crohn's disease and ulcerative colitis in the United States. *Clin Gastroenterol Hepatol*. Dec 2007;5(12):1424-9. doi:10.1016/j.cgh.2007.07.012
2. Collaborators GIBD. The global, regional, and national burden of inflammatory bowel disease in 195 countries and territories, 1990-2017: a systematic analysis for the Global Burden of Disease Study 2017. *Lancet Gastroenterol Hepatol*. 01 2020;5(1):17-30. doi:10.1016/S2468-1253(19)30333-4
3. Dinesen LC, Walsh AJ, Protic MN, et al. The pattern and outcome of acute severe colitis. *J Crohns Colitis*. Oct 2010;4(4):431-7. doi:10.1016/j.crohns.2010.02.001
4. TRUELOVE SC, WITTS LJ. Cortisone in ulcerative colitis; final report on a therapeutic trial. *Br Med J*. Oct 1955;2(4947):1041-8. doi:10.1136/bmj.2.4947.1041
5. Hardy TL, Bulmer E. ULCERATIVE COLITIS: A SURVEY OF NINETY-FIVE CASES. *Br Med J*. Nov 1933;2(3800):812-5. doi:10.1136/bmj.2.3800.812
6. Turner D, Walsh CM, Steinhart AH, Griffiths AM. Response to corticosteroids in severe ulcerative colitis: a systematic review of the literature and a meta-regression. *Clin Gastroenterol Hepatol*. Jan 2007;5(1):103-10. doi:10.1016/j.cgh.2006.09.033
7. Laharie D, Bourreille A, Branche J, et al. Ciclosporin versus infliximab in patients with severe ulcerative colitis refractory to intravenous steroids: a parallel, open-label randomised controlled trial. *Lancet*. Dec 2012;380(9857):1909-15. doi:10.1016/s0140-6736(12)61084-8
8. Järnerot G, Hertervig E, Friis-Liby I, et al. Infliximab as rescue therapy in severe to moderately severe ulcerative colitis: a randomized, placebo-controlled study. *Gastroenterology*. Jun 2005;128(7):1805-11. doi:10.1053/j.gastro.2005.03.003
9. Sandborn WJ, Rutgeerts P, Feagan BG, et al. Colectomy rate comparison after treatment of ulcerative colitis with placebo or infliximab. *Gastroenterology*. Oct 2009;137(4):1250-60; quiz 1520. doi:10.1053/j.gastro.2009.06.061
10. Govani SM, Berinstein JA, Waljee AK, Stidham RW, Higgins PDR, Hardiman KM. Use of Accelerated Induction Strategy of Infliximab for Ulcerative Colitis in Hospitalized Patients at a Tertiary Care Center. *Dig Dis Sci*. Jun 2020;65(6):1800-1805. doi:10.1007/s10620-019-05957-0
11. Gibson DJ, Heetun ZS, Redmond CE, et al. An accelerated infliximab induction regimen reduces the need for early colectomy in patients with acute severe ulcerative colitis. *Clin Gastroenterol Hepatol*. Feb 2015;13(2):330-335.e1. doi:10.1016/j.cgh.2014.07.041
12. Damschroder LJ, Aron DC, Keith RE, Kirsh SR, Alexander JA, Lowery JC. Fostering implementation of health services research findings into practice: a consolidated framework for advancing implementation science. *Implement Sci*. Aug 07 2009;4:50. doi:10.1186/1748-5908-4-50
13. Afif W, Loftus EV, Faubion WA, et al. Clinical utility of measuring infliximab and human anti-chimeric antibody concentrations in patients with inflammatory bowel disease. *Am J Gastroenterol*. May 2010;105(5):1133-9. doi:10.1038/ajg.2010.9
14. Seow CH, Newman A, Irwin SP, Steinhart AH, Silverberg MS, Greenberg GR. Trough serum infliximab: a predictive factor of clinical outcome for infliximab treatment in acute ulcerative colitis. *Gut*. Jan 2010;59(1):49-54. doi:10.1136/gut.2009.183095

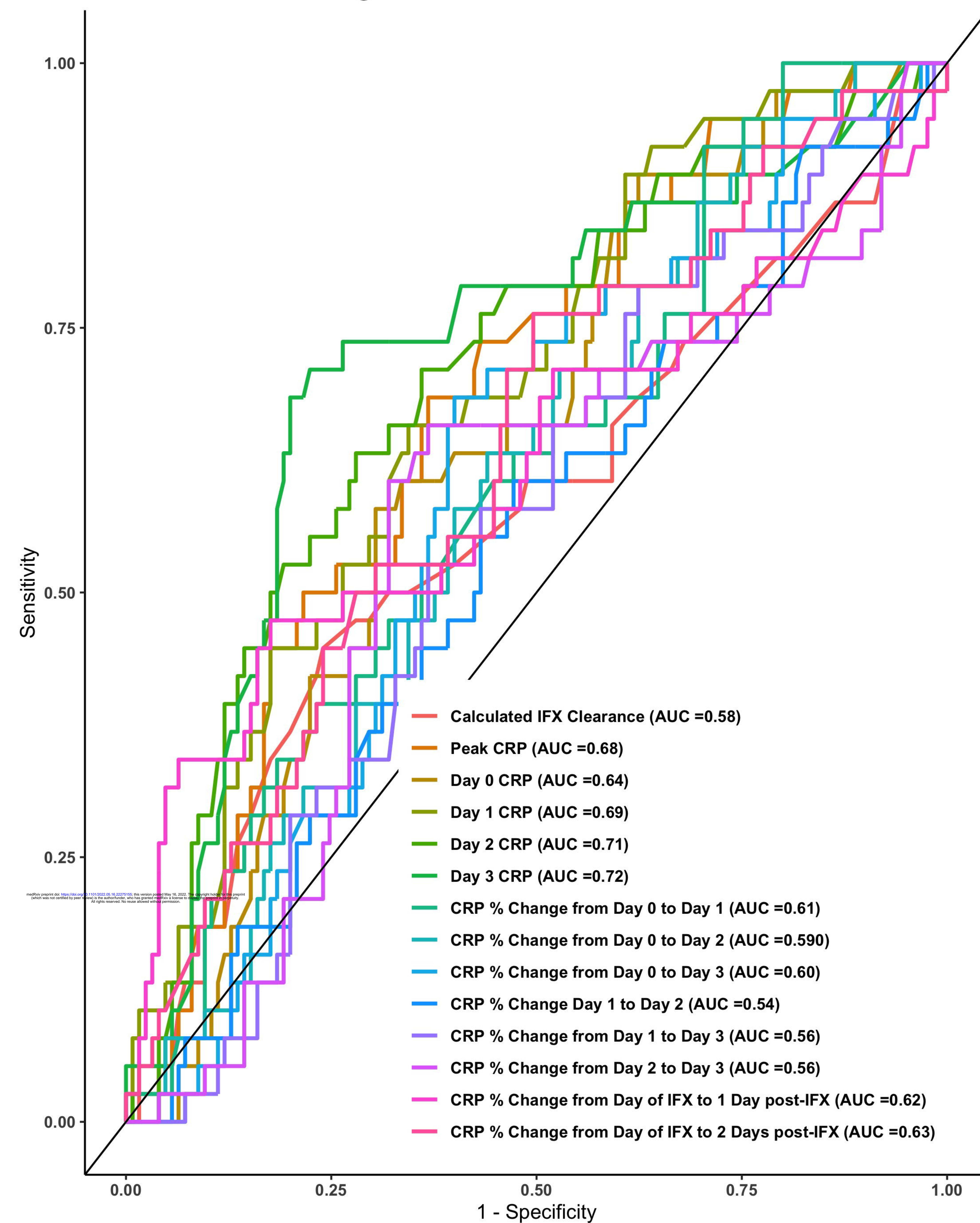
15. Alfonso-Cristancho R, Armstrong N, Arjunji R, et al. Comparative effectiveness of biologics for the management of rheumatoid arthritis: systematic review and network meta-analysis. *Clin Rheumatol*. Jan 2017;36(1):25-34. doi:10.1007/s10067-016-3435-2
16. Battat R, Hemperly A, Truong S, et al. Baseline Clearance of Infliximab Is Associated With Requirement for Colectomy in Patients With Acute Severe Ulcerative Colitis. *Clin Gastroenterol Hepatol*. Mar 2021;19(3):511-518.e6. doi:10.1016/j.cgh.2020.03.072
17. Travis SP, Farrant JM, Ricketts C, et al. Predicting outcome in severe ulcerative colitis. *Gut*. Jun 1996;38(6):905-10.
18. Moore AC, Bressler B. Acute Severe Ulcerative Colitis: The Oxford Criteria No Longer Predict In-Hospital Colectomy Rates. *Dig Dis Sci*. 02 2020;65(2):576-580. doi:10.1007/s10620-019-05668-6
19. Lindgren SC, Flood LM, Kilander AF, Löfberg R, Persson TB, Sjö Dahl RI. Early predictors of glucocorticosteroid treatment failure in severe and moderately severe attacks of ulcerative colitis. *Eur J Gastroenterol Hepatol*. Oct 1998;10(10):831-5. doi:10.1097/00042737-199810000-00003
20. Ho GT, Mowat C, Goddard CJ, et al. Predicting the outcome of severe ulcerative colitis: development of a novel risk score to aid early selection of patients for second-line medical therapy or surgery. *Aliment Pharmacol Ther*. May 15 2004;19(10):1079-87. doi:10.1111/j.1365-2036.2004.01945.x
21. Seo M, Okada M, Yao T, Ueki M, Arima S, Okumura M. An index of disease activity in patients with ulcerative colitis. *Am J Gastroenterol*. Aug 1992;87(8):971-6.
22. Seah D, De Cruz P. Review article: the practical management of acute severe ulcerative colitis. *Aliment Pharmacol Ther*. Feb 2016;43(4):482-513. doi:10.1111/apt.13491
23. Higgins P, Waljee A, Kinnucan J, et al. University of Michigan Severe Ulcerative Colitis Protocol [Internet]. Accessed January 2021, <http://www.med.umich.edu/ibd/docs/severeucprotocol.pdf>
24. Lichtiger S, Present DH, Kornbluth A, et al. Cyclosporine in severe ulcerative colitis refractory to steroid therapy. *N Engl J Med*. Jun 1994;330(26):1841-5. doi:10.1056/NEJM199406303302601
25. Kevans D, Murthy S, Mould DR, Silverberg MS. Accelerated Clearance of Infliximab is Associated With Treatment Failure in Patients With Corticosteroid-Refractory Acute Ulcerative Colitis. *J Crohns Colitis*. May 25 2018;12(6):662-669. doi:10.1093/ecco-jcc/jjy028
26. Waljee AK, Mukherjee A, Singal AG, et al. Comparison of imputation methods for missing laboratory data in medicine. *BMJ Open*. Aug 2013;3(8)doi:10.1136/bmjopen-2013-002847
27. Lynch RW, Lowe D, Protheroe A, Driscoll R, Rhodes JM, Arnott ID. Outcomes of rescue therapy in acute severe ulcerative colitis: data from the United Kingdom inflammatory bowel disease audit. *Aliment Pharmacol Ther*. Oct 2013;38(8):935-45. doi:10.1111/apt.12473
28. Iasonos A, Schrag D, Raj GV, Panageas KS. How to build and interpret a nomogram for cancer prognosis. *J Clin Oncol*. Mar 10 2008;26(8):1364-70. doi:10.1200/JCO.2007.12.9791
29. Le Baut G, Kirchgesner J, Amiot A, et al. A Scoring System to Determine Patients' Risk of Colectomy Within 1 Year After Hospital Admission for Acute Severe Ulcerative Colitis. *Clin Gastroenterol Hepatol*. Aug 2021;19(8):1602-1610.e1. doi:10.1016/j.cgh.2019.12.036

30. Nalagatla N, Falloon K, Tran G, et al. Effect of Accelerated Infliximab Induction on Short- and Long-term Outcomes of Acute Severe Ulcerative Colitis: A Retrospective Multicenter Study and Meta-analysis. *Clin Gastroenterol Hepatol*. 02 2019;17(3):502-509.e1. doi:10.1016/j.cgh.2018.06.031
31. Deiana S, Bagnoli S, Manetti N, et al. Outcome of acute severe ulcerative colitis in patients previously exposed to immunosuppressive therapy. *Dig Liver Dis*. Dec 2016;48(12):1432-1437. doi:10.1016/j.dld.2016.07.021
32. Berinstein JA, Steiner CA, Regal RE, et al. Efficacy of Induction Therapy With High-Intensity Tofacitinib in 4 Patients With Acute Severe Ulcerative Colitis. *Clin Gastroenterol Hepatol*. 04 2019;17(5):988-990.e1. doi:10.1016/j.cgh.2018.11.022
33. Berinstein JA, Sheehan J, Dias M, et al. Tofacitinib for Biologic-Experienced Hospitalized Patients With Acute Severe Ulcerative Colitis: A Retrospective Case-Control Study. *Clin Gastroenterol Hepatol*. May 2021;doi:10.1016/j.cgh.2021.05.038
34. Berinstein JA, Cohen-Mekelburg SA, Greenberg GM, et al. A Care Coordination Intervention Improves Symptoms But Not Charges in High-Risk Patients With Inflammatory Bowel Disease. *Clin Gastroenterol Hepatol*. Aug 28 2021;doi:10.1016/j.cgh.2021.08.034



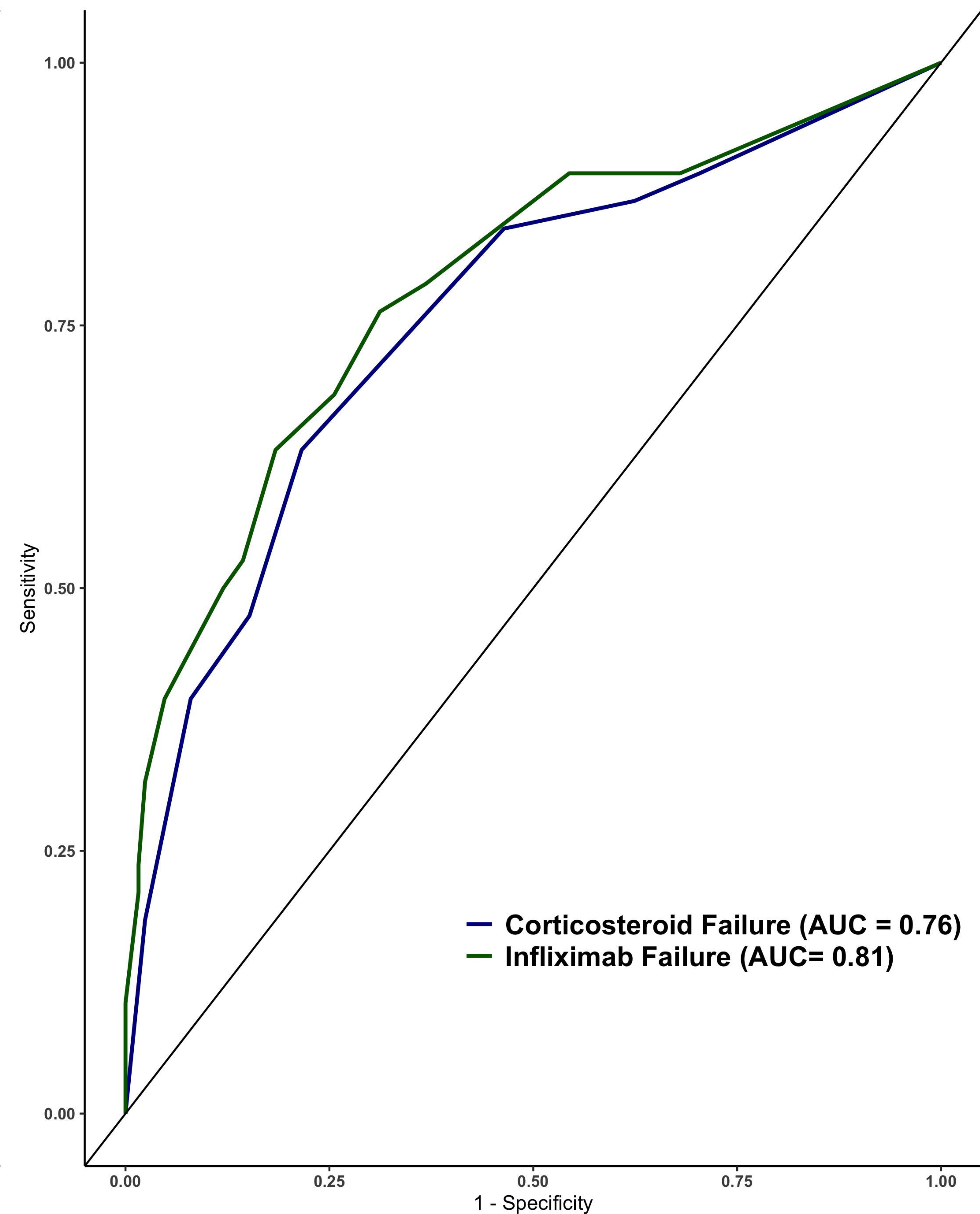
A

## Single Variable Performance



B

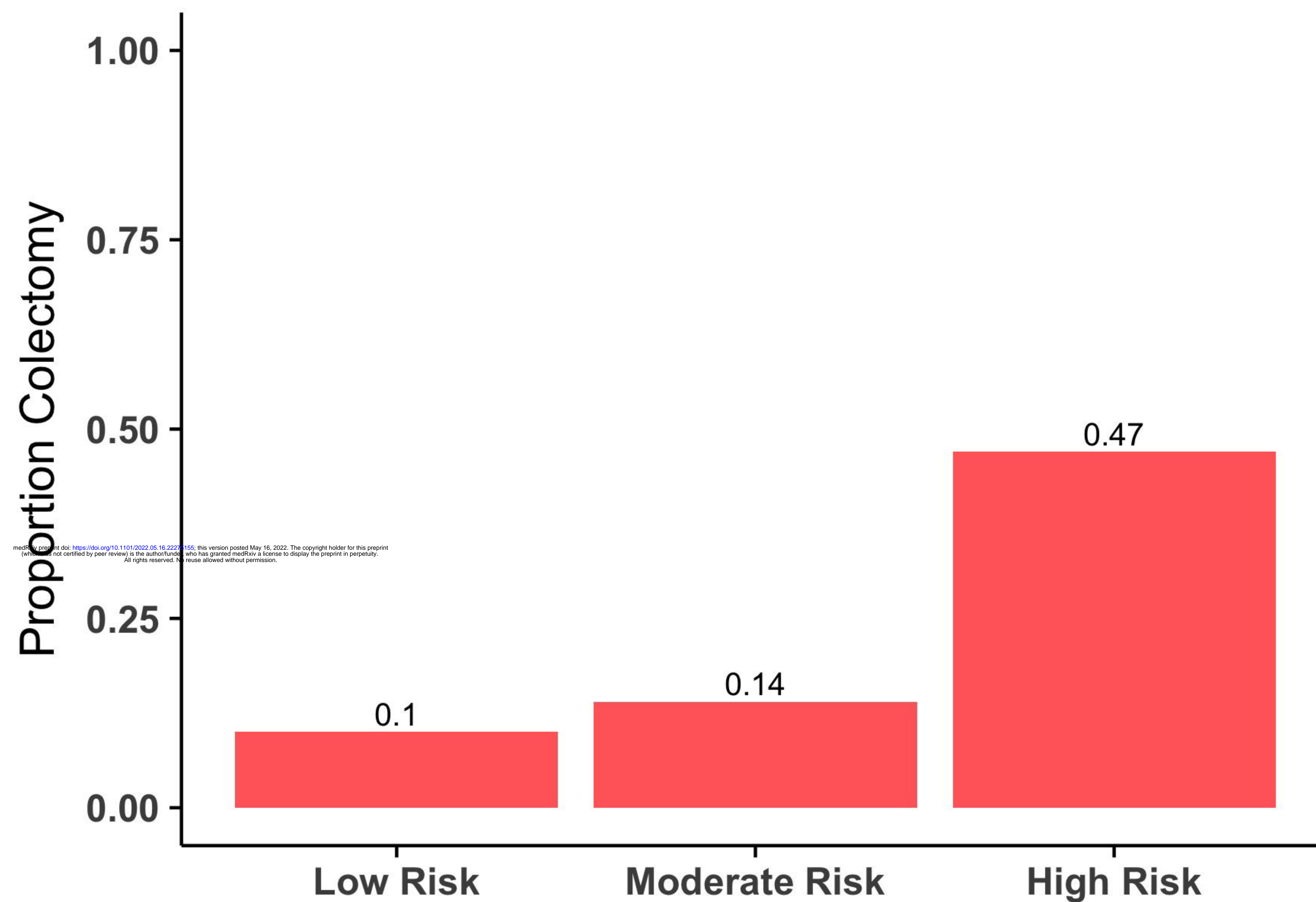
## Multivariable Model Performance





A

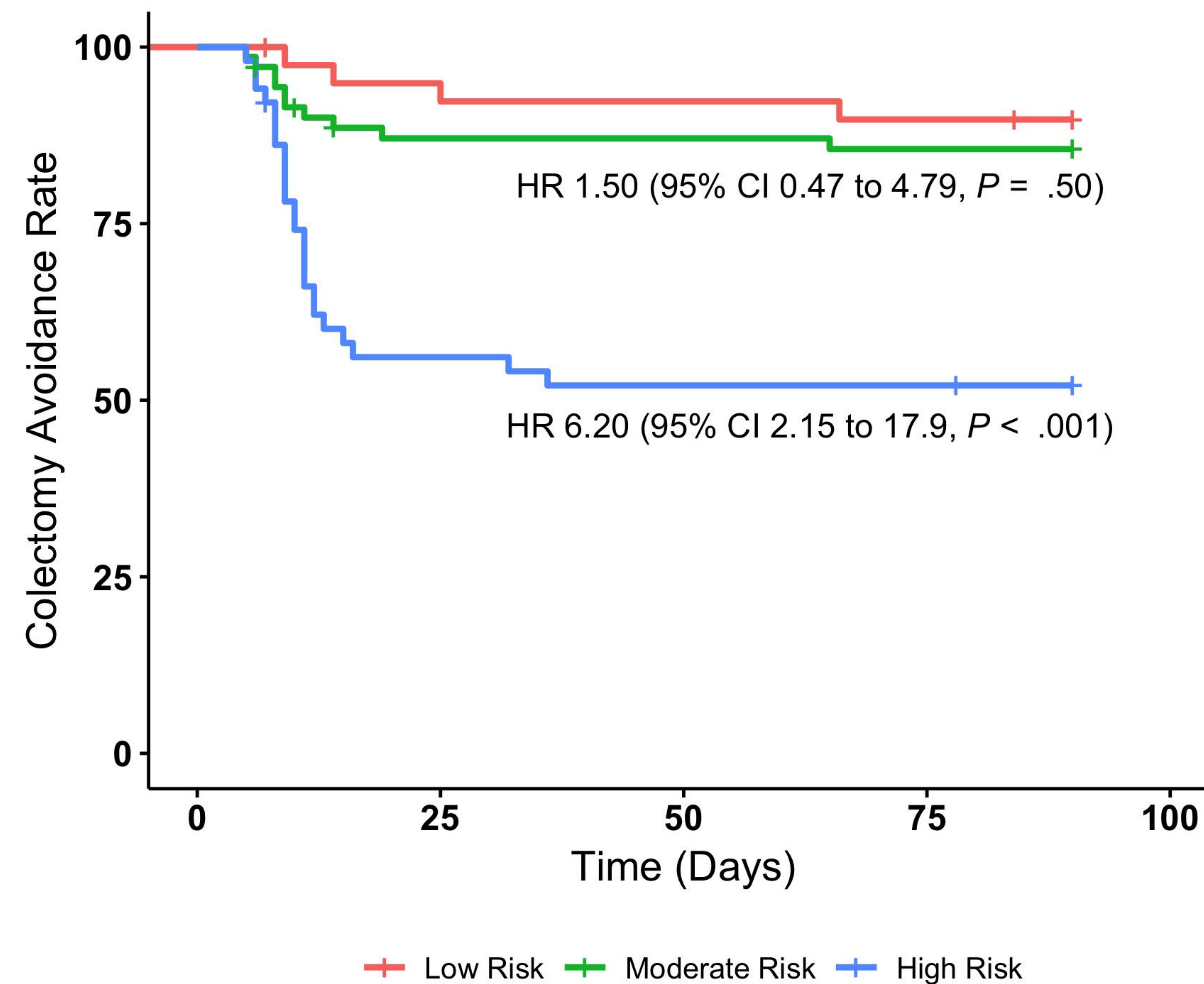
Proportion Colectomy According to Corticosteroid Failure Score



medRxiv preprint doi: <https://doi.org/10.1101/2022.05.16.22271155>; this version posted May 16, 2022. The copyright holder for this preprint (which was not certified by peer review) is the author/funder, who has granted medRxiv a license to display the preprint in perpetuity. All rights reserved. No reuse allowed without permission.

B

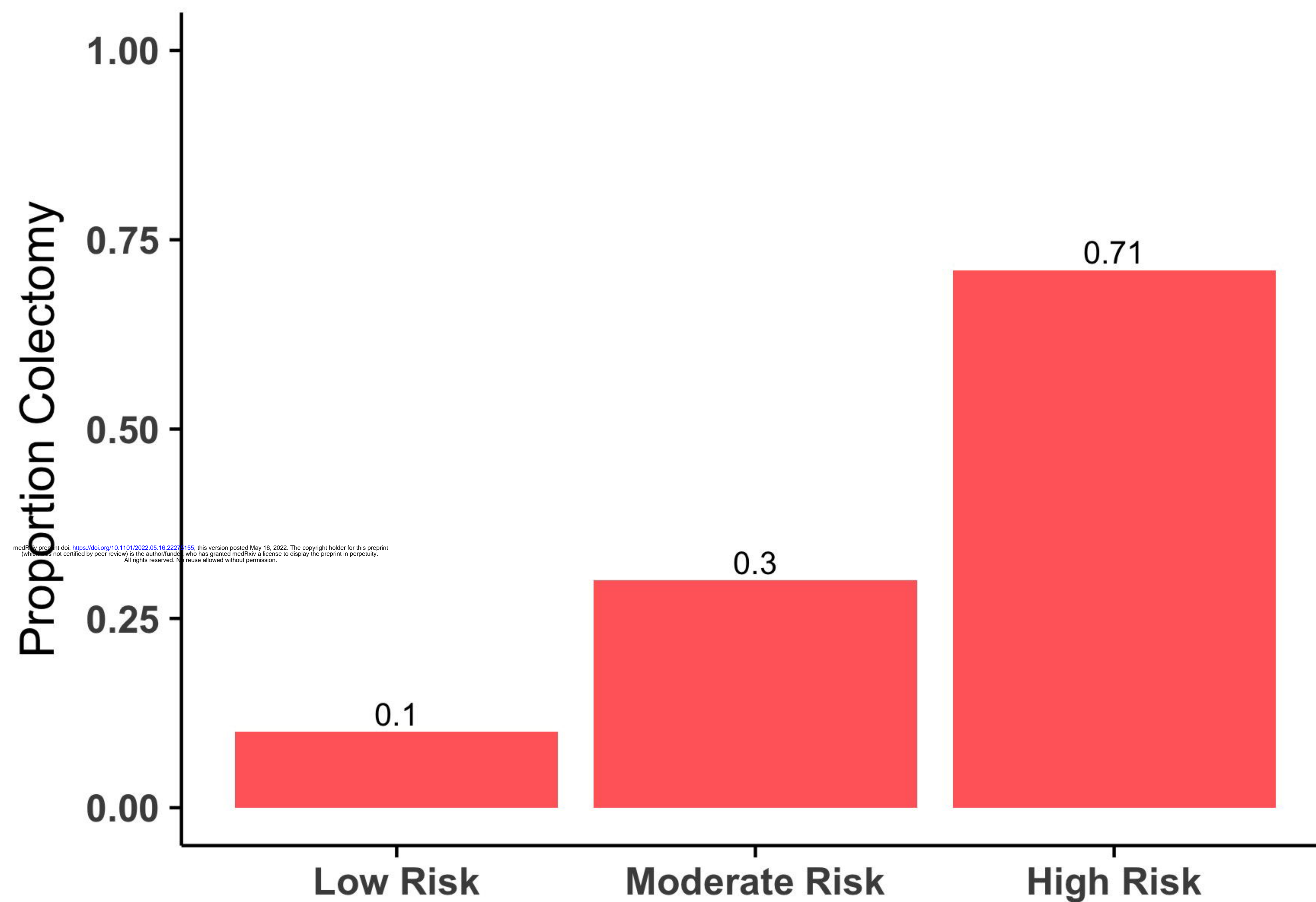
Colectomy Avoidance Rate According to Corticosteroid Failure Score





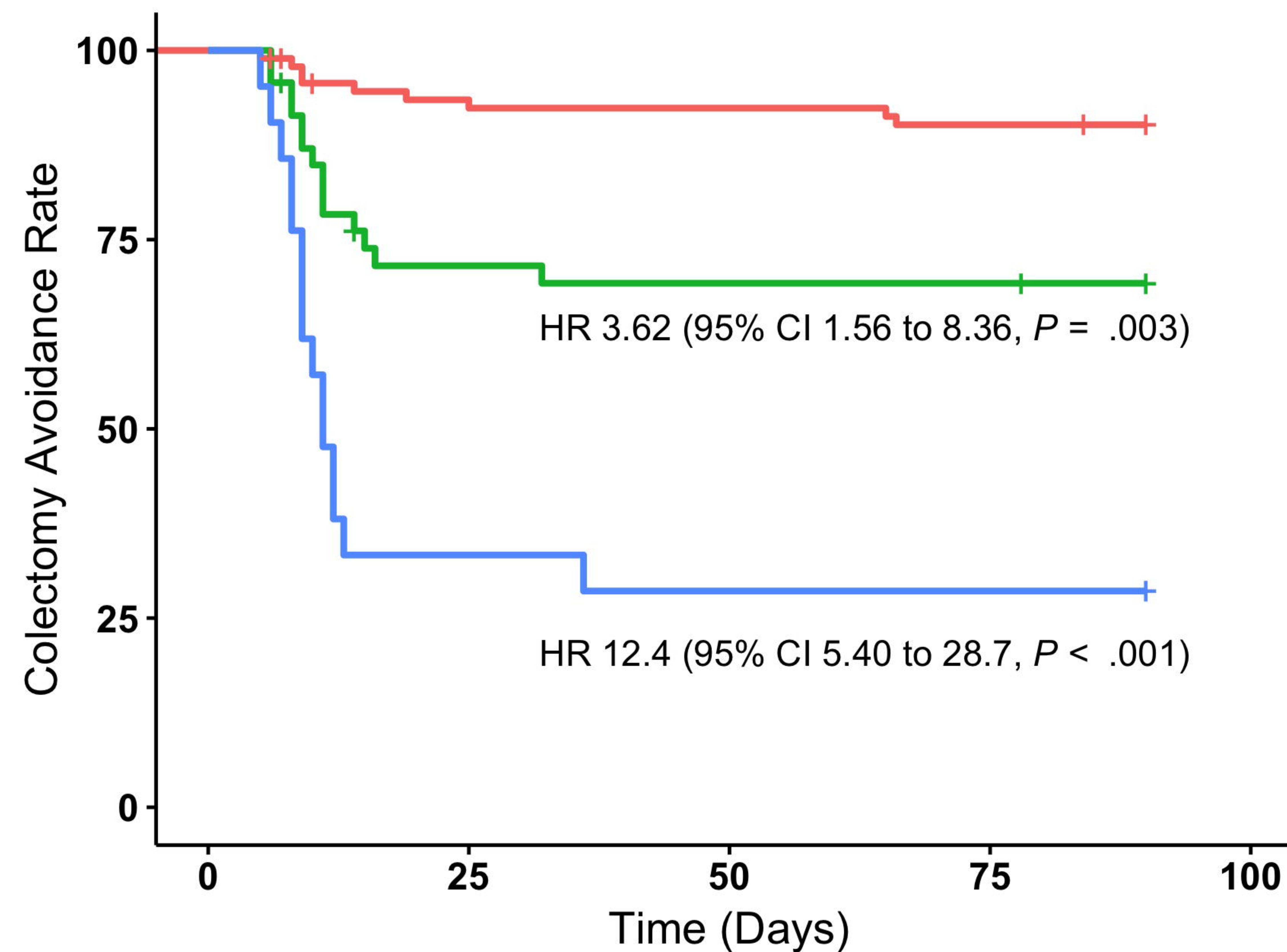
A

Proportion Colectomy According to Infliximab Failure Score



B

Colectomy Avoidance Rate According to Infliximab Failure Score



Low Risk Moderate Risk High Risk