

1 **Title: Cost-effectiveness of Ezetimibe plus statin lipid-lowering therapy: A systematic review**
2 **and meta-analysis of cost-utility studies**

3
4 **Short title:** cost-effectiveness of Ezetimibe plus statin therapy an SRMA

5
6 **Authors:** Akhil Sasidharan *MPH.*, S Sajith Kumar, *PhD.*, Kayala Venkata Jagadeesh** *Pharm D.*,
7 Meenakumari Natarajan, *PhD MPH.*, Bhavani Shankara Bagepally *MBBS, PhD*†

8
9 **Authors' Affiliation:**

10 Health Technology Assessment Resource Centre, ICMR-National Institute of Epidemiology,
11 Chennai, India

12 **Health Technology Assessment in India Secretariat, Department of Health Research, Govt of
13 India, New Delhi.

14
15 **Corresponding author** †

16 Dr. Bhavani Shankara Bagepally.

17 Scientist-D, ICMR-National Institute of Epidemiology

18 Co-Ordinator, Health Technology Assessment Resource Centre, ICMR-NIE

19 R-127, Tamil Nadu Housing Board, Phase I and II,

20 Ayapakkam, Chennai-600077

21 Ph: Off-044-26136316; email: bagepally.bs@gov.in

22
23 **Word Count:** Abstract: 239 Manuscript: 4825 No of Tables: 1
24 No of Figures: 2 No. of Suppl. Tables:1 No of Suppl Figures: 14

25
26 **Key Words:** cost-effectiveness, Ezetimibe, PCSK9i, statin, INB

27
28 **Declaration of Conflict of interest:** None

29
30 **Funding:** Dept. of Health Research Govt. of India funds the HTARC, ICMR-NIE Grant no:
31 T.11011/08/2017-HR(Part-1)/E-office -8025571 dated 27th Nov-2019. The funders played no role
32 in the study's conception, execution, or manuscript preparation.

33
34 **Authors Contribution:**

35 Akhil Sasidharan: Conceptualisation, Data curation, Formal analysis, Original draft.

36 Sajith Kumar: Data curation, original draft, review & editing.

37 Meenakumari N: Data curation, review & editing.

38 KV Jagadeesh: Data curation, review & editing.

39 Bagepally BS: Conceptualisation, Methods, Formal analysis, Software, Review & editing.

40
41 **Acknowledgements:** None

42
43

44

45 **Abstract**

46 **Introduction:** In addition to statin therapy, Ezetimibe, a non-statin lipid-modifying agent, is
47 increasingly used to reduce low-density lipoprotein cholesterol and atherosclerotic cardiovascular
48 disease risk. Literature suggests the clinical effectiveness of Ezetimibe plus statin (EPS) therapy;
49 however, primary evidence on its economic effectiveness is inconsistent. Hence we pooled
50 incremental net benefit to synthesise the cost-effectiveness of EPS therapy.

51 **Methods:** We identified economic evaluation studies reporting outcomes of EPS therapy
52 compared with other lipid-lowering therapeutic agents or placebo by searching PubMed, Embase,
53 Scopus, and Tufts Cost-Effective Analysis registry. Using random-effects meta-analysis, we
54 pooled Incremental Net Benefit (INB) in the US \$ with a 95% confidence interval (CI). We used
55 the modified economic evaluations bias checklist and GRADE quality assessment for quality
56 appraisal. The review was apriori registered with PROSPERO, CRD42021248531.

57 **Results:** The pooled INB from twenty-one eligible studies showed that EPS therapy was
58 significantly cost-effective compared to other lipid-lowering therapeutic agents or placebo. The
59 pooled INB (95% CI) was \$4,274 (621 to 7,927), but there was considerable heterogeneity
60 ($I^2=84.21$). On subgroup analysis EPS therapy is significantly cost-effective in high-income
61 countries [\$4,356 (621 to 8,092)], for primary prevention [\$4,814 (2,523 to 7,106)], and for payers'
62 perspective [\$3,255 (571 to 5,939)], and from lifetime horizon [\$4,571 (746 to 8,395)].

63 **Conclusion:** EPS therapy is cost-effective compared to other lipid-lowering therapeutic agents or
64 placebo in high-income countries and for primary prevention. However, there is a dearth of
65 evidence from lower-middle-income countries and the societal perspective.

66
67
68

69 **Introduction:**

70 Cardiovascular disease (CVD) and cardiovascular events have a perpetual relationship with
71 hyperlipidemia¹⁻³. The World Health Organization (WHO) reported that an estimated 17.9 million
72 people died from CVDs in 2019 alone, representing one-third of all global deaths⁴. For reducing
73 cardiovascular events, statin drugs targeting 3-hydroxy-3-methyl-glutaryl-coenzyme (HMG-CoA)
74 reductase are the most prescribed medications⁵. Statins lower the cardiovascular risk in all groups
75⁶⁻⁸, as well as the risk of developing CVD events^{9, 10}. Despite rigorous statin regimens aimed to
76 lower the risk of cardiovascular complications, a large number of statin-treated patients fail to
77 attain the recommended target low-density lipoprotein-cholesterol (LDL-C) levels due to statin
78 intolerance or discontinuation of treatment due to adverse drug reactions^{11, 12}. Ezetimibe is a non-
79 statin lipid-modifying agent targeting the Niemann-Pick C1-like 1 intestinal cholesterol transporter
80 protein (cholesterol absorption inhibitor)^{13, 14}. It is used to achieve the desirable LDL-C levels for
81 patients on maximally tolerated statin therapy. When added to a statin, Ezetimibe achieves a
82 reduction in LDL-C of typically 20–25% with reduced atherosclerotic CVD (ASCVD) risk^{15, 16}.
83 Hence, the 2018 Cholesterol guidelines warrant using Ezetimibe in individuals with a high
84 ASCVD risk despite receiving optimal statin medication⁷. Studies showed that Ezetimibe reduced
85 LDL-C at levels consistent with Cholesterol Treatment Trialists' (CTT) Collaboration estimates,
86 giving CTTs' extrapolation beyond their initial analysis legitimacy and validity^{15, 17}. Many
87 professional organisations have recently issued guidelines recommending the use of non-statin
88 medications in clinical practice, considering their usefulness^{3, 18-20}.

89 Ezetimibe co-administration with statins has resulted in fewer very-high-risk and extremely high-
90 risk patients eligible for other lipid-lowering agents²¹. A favourable tolerability profile, ease of
91 use, and affordability make Ezetimibe a better option than PCSK9i²². Furthermore, a recent meta-
92 analysis of cost-utility studies (CUA) showed PCSK9i to be not cost-effective compared to other

93 lipid-lowering therapeutic agents in high-income countries (HICs)^{23,24}. As a result, Ezetimibe can
94 be used as a next- cholesterol medication. However, its use and the extent to which it meets unmet
95 requirements are limited. The availability of Ezetimibe as a generic drug in several countries²⁵ can
96 act as a positive indicator and increase overall access to this medication.
97 Further, the evidence on the cost-effectiveness of this therapy is also inconsistent, as few studies
98 report it is cost-effective^{26 27}. In contrast, other studies report that combination therapy is not cost-
99 effective^{20 28} compared to statin therapy. Hence to provide synthesised evidence, we systematically
100 reviewed the evidence on the cost-effectiveness and quantitatively estimated the pooled
101 incremental net benefit (INB) of ezetimibe therapy.

102

103 **METHODS:**

104 The study protocol was pre-registered with PROSPERO, CRD42021248531, and the study was
105 conducted according to the Preferred Reporting Items for Systematic Reviews and Meta-analyses
106 (PRISMA)²⁹.

107 **Data sources, eligibility criteria, screening, and search strategy:** We searched PubMed,
108 Embase, Scopus, and the Tufts Medical Centers' cost-effective analysis (CEA) registry³⁰ for
109 studies published from inception to 26 April 2021 (see Appendix 1), adhering to the PRISMA
110 guideline. We followed the PICO approach (Population, Intervention, Comparator, Outcome) to
111 construct the search terms. Published Cost-Utility Analysis (CUAs) were eligible if they met all
112 the following inclusion criteria. Adult subjects (age above 18 years) with risk of or established
113 CVD requiring lipid-lowering therapy and treated with Ezetimibe compared to other lipid-
114 lowering therapeutic agents such as statins or PCSK9i, or with placebo/no treatment. We included
115 studies reporting economic outcomes in incremental cost-effectiveness ratios (ICER) per quality-

116 adjusted life years (QALYs) or INB. Studies with effectiveness measured other than in quality-
117 adjusted life years (QALY), reviews, letters, editorials, abstracts, books, reports, grey literature,
118 and methodological articles were excluded. The detailed search terms are reported in Appendix 1.

119 **Selection of studies:** We identified a total of 1,944 studies after systematically searching multiple
120 peer-reviewed repositories. All English language studies that met the eligibility criteria listed from
121 the electronic database search were screened independently for titles and abstracts by two
122 independent reviewers (BSB and AS) for their potential inclusion using the Rayyan-web
123 application³¹. Reviewers (AS, KVJ, and MK) independently reviewed the full text of the finalized
124 125 studies after the title and abstract screening and deduplication in detail. The independent
125 assessors' mutual agreement with another reviewer (BSB) produced the final list of studies meeting
126 the inclusion and exclusion criteria (n=22), and data were extracted from the selected studies. The
127 PRISMA flow chart of the screening process is appended as Figure 1.

128 **Data extraction:** Using a data extraction template adapted for the outcomes of interest, we
129 extracted the following data from eligible studies: author, year, country of setting, study/patient
130 characteristics, intervention, comparator, and the general characterization of the model, which
131 included model type, perspective, time horizons, discount rate, and currency year. We extracted
132 economic parameters such as costs (C), incremental costs (ΔC), clinical effectiveness (E), its
133 incremental effectiveness (ΔE), ICERs, INB values, and their measures of dispersion [i.e., standard
134 deviation (SD), standard error (SE), or 95% confidence interval (CI), willingness to pay (WTP),
135 and threshold (K). From the cost-effective (CE) plane graph, we extracted ΔC and ΔE values using
136 WebPlotDigitaliser³².

137 **The outcome of interest:** In the meta-analysis, we estimated the pooled INB, defined as pooled
138 $INB = K * \Delta E - \Delta C$, where K was the WTP threshold, ΔC -incremental cost (i.e., the difference in

139 costs between intervention and comparator), ΔE -incremental effectiveness (i.e., the difference in
140 effectiveness between intervention and comparator). A positive INB favours intervention, i.e.,
141 intervention is cost-effective, whereas a negative INB favours the comparator, i.e., intervention is
142 not cost-effective. INB is used instead of ICER as the effect measure because of the inherent
143 limitations of ICER and the ambiguity in interpreting them³³⁻³⁵.

144 **Data preparation and statistical analysis:** We followed the data preparation method and analysis
145 described and used elsewhere^{23, 33, 36, 37}. To calculate the INB and its variance, mean values along
146 with dispersions (SD, SE, and 95% CI) of ΔC and ΔE are required. However, economic studies
147 reported different parameters; therefore, we designed five scenarios to deal with the data available
148 from primary studies (Appendix II). Using the data reported in the primary research publications
149 and following the approach detailed in Bagepally et al.^{33, 36}, we calculated the INB and its
150 variances for each intervention comparator duo. If a cost-effective (CE) plane graph was not
151 provided, covariance was estimated for 1000 Monte-Carlo simulations from the extracted ΔC and
152 ΔE values for studies included in scenario 3 (see Appendix II).

153 Included studies reported in different currencies from different time points (years). To compare
154 INB in a common currency, all monetary units, except for the non-GDP-based threshold, were
155 adjusted for inflation using the consumer price index (CPI) and converted to purchasing power
156 parities (PPP)-adjusted US dollar (US \$) for the year 2021, as detailed in Appendix II. Following
157 the data preparation, INBs were pooled across studies stratified by income classification as low-
158 income (LIC), lower-middle (LMIC), upper-middle (UMIC), and high-income (HIC) countries as
159 per the World Bank classification³⁸. Meta-analysis was applied to pool the INBs using random-
160 effects model based on the DerSimonian and Laird method. I^2 statistics were used to assess
161 heterogeneity, $I^2 > 50\%$ was considered substantial heterogeneity, and Cochrane Q p-value < 0.05

162 was taken as a cut-off for significant heterogeneity. We did subgroup analysis wherever
163 appropriate to explore the source of heterogeneity and provide subgroup-specific pooled INBs.
164 Subsequently, we assessed the publication bias using funnel plots and Eggers' test. Furthermore,
165 we explored the sources of asymmetry using contour-enhanced funnel plots. All data were
166 prepared using Microsoft Excel version 2019³⁹ and analyzed using Stata software version 16⁴⁰.

167 **Risk of bias assessment and quality assessment:** Reporting quality was assessed independently
168 by the reviewers using the modified economic evaluation bias (ECOBIAS) checklist⁴¹. It
169 considers both overall biases (11 items) and model-specific biases, including structure (4 items),
170 data (6 items), and internal consistency (1 item). Each item was rated as applicable, partially
171 applicable, unclear, no, or not applicable (Supplementary Figure 1). GRADE (Grading of
172 Recommendation, Assessment, Development, and Evaluation) was used to assess the quality of
173 evidence and grade recommendations^{42, 43}. We graded the evidence for the cost-effectiveness of
174 Ezetimibe plus statin (EPS) therapy compared to other lipid-lowering therapeutic agents or a
175 placebo. The certainty of the evidence was rated for EPS therapy in HICs, for primary prevention,
176 from a payer's perspective, and over a lifetime horizon. Additionally, the certainty of the evidence
177 was rated for the cost-effectiveness of EPS therapy versus statin monotherapy, for EPS therapy
178 versus statin monotherapy for primary prevention from the payer's perspective as well. This
179 assessment was based on the risk of bias, inconsistency, indirectness, imprecision, publication bias,
180 and other considerations. The quality of the evidence was classified as high, moderate, low, or
181 very low^{42, 43}. We excluded study design and sample size considerations because the included
182 cost-utility studies are model-based.

183 **Results:**

184 **General Characteristics of the Included Studies:** We retrieved and included twenty-two

185 potentially relevant articles^{20, 26-28, 44-61} for systematic review, of which 21 studies were eligible for
186 meta-analysis^{20, 26-28, 44-46, 48-61} (Figure 1). One study from the UK, Ara et al.⁴⁷, was not included
187 for meta-analysis due to incomplete data. The general characteristics of the included articles are
188 summarised in Table 1. Included studies reported 25 comparisons; EPS therapy versus statin
189 monotherapy(n=18)^{26-28, 44, 46, 48-50, 52-55, 58-61}, EPS therapy versus PCSK9i plus Ezetimibe and
190 statins(n=3)^{20, 56, 57}, EPS therapy versus PCSK9i with statin therapy(n=2)^{44, 60} and EPS therapy
191 versus no treatment or placebo(n=2)^{45, 51}. All studies were set in HICs, except two, based on
192 UMICs^{28, 59}. Most of the studies (n = 20) analysed a lifetime horizon, except two studies^{51, 59}.
193 Fourteen studies reported from a healthcare perspective^{26, 28, 44-46, 51, 53-56, 58-60}, four from payer's
194 perspective^{20, 27, 48, 52}, and three studies from a societal perspective^{28, 49, 50}. All studies used Markov
195 models with acycle length of one year, except for an alongside trial⁵¹. The named models included
196 were Cardio Vascular Disease Policy Model (CVDPM) (n = 3)^{44, 53, 60} and the COOK model (n =
197 2)^{26, 52}. All studies used discounting for cost and outcomes. All of the included studies reported
198 direct medical costs; besides, Kongpakwattana et al. reported direct non-medical costs²⁸, and
199 Landmesser et al. reported indirect costs²⁰. All the studies reported using country-specific
200 thresholds as WTP except one study⁵⁹ that used GDP-based WTP.
201 In the meta-analysis, due to the differences in reported outcomes among different studies, the INB
202 variance from the most comparable studies was utilised for calculations under scenario five
203 (Appendix II). The INB variance of Van Nooten et al.⁵⁰ was used for three studies^{20, 49, 54}, and the
204 INB variance of Schlackow et al.⁵⁸ was used for six studies^{26, 27, 45, 46, 51, 55}, respectively. Among
205 the 21 studies evaluating the cost-effectiveness of Ezetimibe versus other lipid-lowering
206 therapeutic agents or placebo, seven were set in Europe^{20, 27, 49, 50, 56, 57, 61}; five were set in the US
207^{44, 48, 52, 53, 58, 60}, three in the UK^{46, 47, 51} and one studies each from Canada²⁶, China⁵⁹, Saudi Arabia

208 ⁵⁵ and Thailand ²⁸. Schlackow et al. reported from the health system perspective of both the US
209 and UK ⁵⁸. In all studies, except Kongpakwattana et al. ²⁸ and Almalki et al. ⁵⁵ mean plasma LDL-C
210 levels less than 70 mg/dL reflected current ezetimibe dosing recommendations. Except for two ⁴⁸,
211 ⁴⁹ that included fatal and non-fatal stroke as well, all studies included fatal and non-fatal coronary
212 heart diseases in their model. Unstable angina was modelled in three studies ^{48, 49, 55} in which
213 Almalki et al. ⁵⁵ considered coronary revascularisation also. Eventhough three studies ^{44, 53, 60}
214 modelled adverse events as consequences, only Yang et al. ⁵⁹ included costs due to adverse events.
215 Six studies profiled the model population after local registries and databases ^{44, 49, 52, 53, 60, 61}, three
216 studies ^{48, 55, 59} from clinical trials, only Kongpakwattana et al. used data from a meta-analysis of
217 RCTs ²⁸ (see Table 1).

218 All three studies from payers' perspective ^{27, 48, 52}, and seven studies out of nine from the healthcare
219 perspective ^{26, 28, 46, 53-55, 58-60} and two out of three studies from the societal perspective ^{49, 50} reported
220 EPS therapy to be cost-effective compared with statin monotherapy. From the healthcare
221 perspective, all two studies ^{44, 60} considered EPS therapy to be cost-effective compared to PCSK9i
222 with statin therapy, but only one study ⁵⁶ out of three, reported EPS therapy to be cost-effective
223 compared with PCSK9i along with Ezetimibe and statin. The alongside trial ⁵¹, which compared
224 EPS therapy and placebo, reported that the intervention was not cost-effective. In contrast, a
225 model-based study ⁴⁵ that compared EPS therapy versus no treatment reported the intervention as
226 cost-effective. In addition, according to the WTP threshold of Thailand, Kongpakwattana et al. ²⁸
227 reported Ezetimibe as not cost-effective from healthcare or societal perspective. Three studies did
228 not report any sensitivity analyses ^{48, 53, 61} while the remaining studies ^{20, 26-28, 44-46, 49, 50, 52, 54-56, 59,}
229 ⁶⁰ included deterministic as well as probabilistic sensitivity analyses. Additionally, eight studies ^{28,}
230 ^{44-46, 50, 54, 55, 60} reported scenario and threshold analyses, and six studies ^{26, 49, 51, 52, 56, 60} also included

231 sub-group analyses.

232 I. Quality Appraisal:

233 **Risk of bias assessment:** The risk of bias among the identified studies was analysed using the
234 ECOBIAS checklist⁶². The ECOBIAS checklist shows that almost 91 percent of the studies chose
235 the best current practice as a comparator, and all the comparators are adequately described. The
236 details of the data used in the studies are transparent. All studies provided sufficient detail on the
237 costs, effectiveness, discount rates, and have acknowledged the sources of funding. Additionally,
238 model selection bias was negligible. Similarly, bias related to time horizon was also low since
239 majority of the studies employed a lifetime horizon. Limited scope bias is highly probable in
240 almost all studies, also internal consistency related to mathematical logic was not evident
241 (Supplementary Figure 1).

242 **Publication bias:** The funnel plot showed asymmetry. The studies were distributed along with the
243 mean effect size of the funnel plot. The Egger's test with a higher p-value ($p = 0.860$) indicates no
244 significant variability among the studies and no publication bias. However, the absence of studies
245 in the area of significance on the contour enhanced funnel plot suggests the possibility of
246 publication bias due to factors other than non-reporting bias (Supplementary Figure 2). Due to
247 high heterogeneity, it would be difficult to distinguish between publication bias and other causes.

248 II. Ezetimibe compared with other lipid-lowering therapeutic agents or placebo

249
250 The pooled INB (INBp) with 95% CI, \$4,274 (621 to 7,927) showed EPS therapy is significantly
251 cost-effective compared with other lipid-lowering therapeutic agents or placebo. The INBp
252 calculated from 25 comparisons^{20, 26-28, 44-46, 48-61} revealed considerable heterogeneity ($I^2 = 84.21$)
253 (Figure 2).

254 **Subgroup analysis: We conducted** subgroup analyses to explore the heterogeneity between

255 studies and provide subgroup specific pooled INBs. Subgroup analysis based on treatment
256 comparisons showed that EPS therapy is significantly cost-effective compared with PCSK9i plus
257 statin therapy ($n = 2$)^{44, 60} with INBp \$66,001 (46,284 to 85,718). Also, EPS therapy is significantly
258 cost-effective compared to PCSK9i plus EPS therapy ($n = 3$)^{20, 56, 57} with INBp \$6,002 (3,578 to
259 8,427). There was no heterogeneity ($I^2 = 0.0$) in either of the subgroups. However, EPS therapy is
260 not significantly cost-effective compared to statin monotherapy ($n = 18$)^{26-28, 44, 46, 48, 49, 52-55, 58-61}
261 with INBp \$2,558 (-1,249 to 6,364) and considerable heterogeneity ($I^2 = 84.02$). Likewise, EPS
262 therapy is not significantly cost-effective compared to no treatment or placebo ($n = 2$)^{45, 51} with
263 INBp \$18.4 (-12,093 to 12,130) and no heterogeneity ($I^2 = 0.0$) (Supplementary Figure 3).

264 On subgroup analysis with the income status of the countries, the pooled INBs from HICs ($n =$
265 22)^{20, 26, 27, 44-46, 48-58, 60, 61} showed that EPS therapy is cost-effective compared with other lipid-
266 lowering therapeutic agents or placebo with an INBp of \$4,356 (621 to 8,092) with considerable
267 heterogeneity ($I^2 = 86.18$). In contrast, EPS therapy is not significantly cost-effective for the
268 UMICs^{28, 59} with an INBp of \$1,140 (-18,959 to 21,239) and no heterogeneity ($I^2 = 0.0$)
269 (Supplementary Figure 4).

270 On subgroup analysis with study perspective, the pooled INBs among studies from payers'
271 perspective ($n = 4$)^{20, 27, 48, 52} showed that EPS therapy is significantly cost-effective compared with
272 other lipid-lowering therapeutic agents or placebo with an INBp of \$3,255 (571 to 5,939) but with
273 substantial heterogeneity ($I^2 = 71.14$). However, EPS therapy is not significantly cost-effective
274 from a healthcare perspective ($n = 17$)^{26, 28, 44-46, 51, 53-56, 58-61} with INBp \$3,255 (571 to 5,939) and
275 considerable heterogeneity ($I^2 = 86.14$) or from a societal perspective ($n = 3$)^{28, 49, 50} with INBp
276 \$3,255 (571 to 5,939) and considerable heterogeneity ($I^2 = 86.04$) (Supplementary Figure 5).

277 On subgroup analysis based on the time horizon of the study ($n = 23$)^{20, 26-28, 44-46, 48-50, 52-58, 60, 61},

278 EPS therapy is significantly cost-effective compared with other lipid-lowering therapeutic agents
279 or placebo with an INBp of \$4,571 (746 to 8,395) but with substantial heterogeneity ($I^2 = 85.50$).
280 However, among studies with a non-lifetime horizon, EPS therapy is not significantly cost-
281 effective with an INBp of \$381 (-10,332 to 11,093)^{51, 59} and no heterogeneity ($I^2 = 0.0$)
282 (Supplementary Figure 6).

283 Subgroup analysis based on discount rates of 3% ($n = 15$)^{20, 28, 44, 49, 52, 53, 55-58, 60} with INBp \$1,879
284 (-4,547 to 8,305), 3.5% ($n = 5$)^{46-48, 51, 58} with INBp \$735 (-1,309 to 2,778) and 5% ($n = 2$)^{26, 27}
285 with INBp \$2,342 (-9,770 to 14,453) showed EPS therapy is not significantly cost effective
286 compared to other lipid-lowering therapeutic agents or placebo. The 3% discount rate subgroup
287 had considerable heterogeneity ($I^2 = 86.27$), but the 3.5% and 5% discount rates subgroup had no
288 heterogeneity ($I^2 = 0.0$). However, with a discount rate of 4% ($n = 3$)^{50, 54, 61}, EPS therapy is
289 significantly cost-effective with an INBp of \$12,254 (4,448 to 20,060) and considerable
290 heterogeneity ($I^2 = 93.52$) (Supplementary Figure 7).

291 EPS therapy is significantly cost-effective for primary prevention ($n = 7$)^{27, 46, 47, 50, 51, 58} with an
292 INBp of \$4,814 (2,523 to 7,106) and no heterogeneity ($I^2 = 0.0$). However, the pooled INBs
293 showed that EPS therapy is not significantly cost-effective for secondary prevention ($n = 15$)^{20, 28,}
294 ^{44, 48, 49, 53-57, 59, 60} with an INBp of \$2,088 (-3,282 to 7,457) and considerable heterogeneity ($I^2 =$
295 87.32). Similarly, for primary and secondary prevention together ($n = 3$)^{26, 52, 61} INBp \$15,257 (-
296 10,035 to 40,550) with considerable heterogeneity ($I^2 = 94.32$) showed EPS therapy is not
297 significantly cost-effective (Supplementary Figure 8).

298 The thresholds used in the comparisons ranged from PPP adjusted \$13,218 to \$2,05,198. Based
299 on the median threshold of \$50,000, the mean INBp among both the subgroups, viz., thresholds of
300 $>50,000$ \$ ($n = 13$)^{20, 27, 44, 46, 53, 54, 56-58, 60, 61} with INBp \$7,398 (-1,657 to 16,452) and considerable

301 heterogeneity ($I^2 = 89.62$) and thresholds of $<50,000$ \$ ($n = 12$)^{26, 28, 45, 48-52, 55, 58, 59}, INBp \$1,886
302 (-2 to 3,775) with moderate heterogeneity ($I^2 = 36.66$) showed EPS therapy is not cost effective
303 compared with other lipid-lowering therapeutic agents or placebo, but without statistical
304 significance (Supplementary Figure 9).

305 On subgroup analysis based on scenario, the mean INBp showed EPS therapy is not significantly
306 cost effective compared with other lipid-lowering therapeutic agents or placebo for scenarios two
307 ($n = 6$)^{44, 53, 57, 60} with an INBp of \$-522 (-59,813 to 58,769) and considerable heterogeneity ($I^2 =$
308 93.99). Under scenarios three ($n = 3$)^{58, 61} with INBp \$14,398 (-12,225 to 41,020) and with
309 considerable heterogeneity ($I^2 = 87.92$) and four ($n = 5$)^{28, 48, 50, 56, 59} with INBp \$2,876 (-568 to
310 6,320) with moderate heterogeneity ($I^2 = 48.81$), EPS therapy was not significantly cost effective
311 compared with other lipid-lowering therapeutic agents or placebo. However, under scenario five
312 ($n = 11$)^{20, 26-28, 45, 46, 49, 51, 52, 54, 55}, EPS therapy was significantly cost effective with INBs of \$3,102
313 (599 to 5,606) and substantial heterogeneity ($I^2 = 56.67$) (Supplementary Figure 10).

314 Further subgroup analysis was conducted to explore the heterogeneity observed when EPS therapy
315 was compared with statin monotherapy. We found that compared with statin monotherapy, EPS
316 therapy is significantly cost-effective for primary prevention ($n = 5$)^{27, 46, 50, 58} with an INBp \$4,992
317 (2,659 to 7,326) and no heterogeneity ($I^2 = 0.0$). Also, from a payers' perspective ($n = 3$)^{27, 48, 52}
318 with INBp \$2,029 (72 to 3,987) and less heterogeneity ($I^2 = 28.65$) EPS therapy is significantly
319 cost-effective compared with statin monotherapy. However, EPS therapy was cost-effective but
320 without statistical significance among the subgroups of HICs ($n = 15$) with INBp \$2,574 (-1,341
321 to 6,488) and with substantial heterogeneity ($I^2 = 86.83$), UMICs ($n = 3$) with INBp \$1,140 (-
322 18,959 to 21,239) with no heterogeneity ($I^2 = 0.0$). Similar results were also observed in healthcare
323 perspective ($n = 12$)^{26, 28, 44, 47, 53-55, 58-61} with INBp \$-323 (-12,568 to 11,922) and substantial

324 heterogeneity ($I^2 = 86.40$), societal perspective ($n = 3$)^{28, 49, 50} with INBp \$1,961 (-4,300 to 8,222)
325 with substantial heterogeneity ($I^2 = 86.04$), primary and secondary prevention together ($n = 3$)^{26,}
326 ^{52, 61} with INBp \$15,257 (-10,035 to 40,550) with substantial heterogeneity ($I^2 = 94.32$) and lifetime
327 horizon ($n = 17$)^{26-28, 44, 46, 48, 49, 52-55, 58, 60, 61} with INBp \$2,589 (-1,293 to 6,471) with substantial
328 heterogeneity ($I^2 = 84.95$). For secondary prevention ($n = 10$)^{28, 44, 48, 49, 53-55, 59, 60} INBp \$-2,303 (-
329 7,728 to 3,123) showed that EPS therapy is not cost-effective compared to statin monotherapy but
330 without statistical significance and substantial heterogeneity ($I^2 = 84.65$).

331 **Certainty of evidence:** The GRADE quality assessment revealed low confidence in the overall
332 evidence of the cost-effectiveness of EPS therapy when compared with other lipid-lowering
333 therapeutic agents or placebo. We found moderate confidence in results for HICs and a low level
334 of confidence in primary prevention. However, the confidence of results from a payer perspective
335 and lifetime horizon is very low. Considering EPS therapy compared with statin monotherapy, we
336 have moderate confidence in the results observed for primary prevention and from the payers'
337 perspective, as detailed in Appendix IV.

338

339 **Discussion:**

340 The current study synthesized the cost-effectiveness of Ezetimibe with statin compared to other
341 lipid-lowering therapeutic agents or placebo using systematic review and meta-analysis of cost-
342 utility studies. Economic evaluation studies are difficult to synthesise due to the differences in
343 economic parameters, income thresholds, study perspectives, costs. Many studies that report cost-
344 effectiveness ignore the CI of the ICER point estimates. To address these issues, we tried to
345 standardise data extraction and preprocessing from various published studies to produce a pooled
346 INB with CI.

347 The pooled INBs from 25 comparisons identified from 21 studies for the meta-analysis show that
348 EPS therapy is more cost-effective than other lipid-lowering therapeutic agents such as statins,
349 PCSK9i, placebo, or no treatment. Subgroup analysis strengthened the robustness of our findings.
350 We conducted a subgroup analysis to understand the considerable heterogeneity. EPS therapy is
351 significantly cost-effective compared to PCSK9i plus statin and PCSK9i plus Ezetimibe with
352 statins. A plethora of evidence has shown that the main reasons for the underuse of statins in
353 LMICs and UMCs by eligible patients with established CVD^{63, 64} were lack of availability,
354 accessibility, and affordability. The subgroup analysis also revealed that EPS therapy is cost-
355 effective against therapeutic agents or placebo in HICs, with payers' perspective, lifetime horizon,
356 and primary prevention. However, the results lose their robustness and become not significantly
357 cost-effective for HICs and lifetime horizons when we limit the comparator to statin monotherapy
358 alone in further subgroup analysis.

359 Previous systematic review by Marquina et al.⁶⁵, had indicated that Ezetimibe was cost-effective
360 in 62.5% of the included studies, and Suh et al.⁶⁶, indicated that Ezetimibe was cost-effective for
361 statin intolerant patients with chronic kidney disease. With the current evidence, we conclude EPS
362 therapy is not cost-effective for secondary prevention, similar to previously published studies that
363 suggested that PCSK9i may become cost-effective for secondary prevention⁶¹ only if the WTP
364 threshold is increased or if the drugs cost is lowered^{44, 60}.

365 For Ezetimibe, the main cost-effectiveness drivers were baseline cardiovascular risks^{26, 45, 46, 48, 51,}
366⁵⁵, cost of the drug^{44, 52, 54, 60}, treatment effects related to cardiovascular and non-cardiovascular
367 mortality^{28, 52}, and time horizon^{44, 55, 59}. For some other studies, the cost-effectiveness of EPS
368 therapy compared with statin monotherapy was subject to certain conditions. Davies et al.⁵²
369 reported that EPS therapy was cost-effective for secondary prevention of CHD and stroke. Also,

370 the study reported that for primary prevention of CHD and stroke in patients whose LDL-C levels
371 were > 100 mg/dL and in patients with diabetes, Ezetimibe becomes cost-effective only if we
372 consider a 90% cost reduction.. Soini et al. ⁴⁹ showed that EPS therapy is cost-effective only in
373 specific sub-populations of men and diabetic women. A study by Ara et al. ⁴⁶ reported that EPS
374 therapy becomes cost-effective in the UK health system when using a threshold of £30,000 per
375 QALY instead of the £20,000 per QALY value. Similarly, Almalki et al. ⁵⁵ reported that EPS
376 therapy was not cost-effective for 5 and 10 year models but became a cost-effective treatment
377 when a lifetime horizon is used.

378 The drug price and WTP per additional QALY play an important role in determining the cost-
379 effectiveness of EPS therapy. The differences observed in reported outcomes and the high
380 heterogeneity estimated among the studies may be the result of changes in drug prices or cost
381 estimations under different study perspectives. This necessitates the need for context-specific
382 future research in primary economic evaluations for EPS therapy compared with different lipid-
383 lowering therapeutic agents with a more accurate estimate of costs. More studies from LMICs and
384 societal perspectives are also needed for the generalisability of results.

385 The limitation of our study is that the comprehensiveness of this cost-effectiveness results is
386 arguable since most clinical data comes from western countries, which are set in HICs, which
387 determine the cost of long-term treatment and prescriptions. Only a small percentage comes from
388 Asian studies and none from Africa, Australia, or South America, indicating the need for more
389 studies using LMICs and societal perspectives. A Majority of the studies have not included indirect
390 costs nor. And none captured the real-world burden of CVD or considered out-of-pocket
391 expenditure and caregiver time and costs. The use of surrogate markers even when clinical
392 endpoints are recommended⁶⁷, t shows lack of clinical trials describing complex outcomes and

393 have increased the uncertainties in the models. The use of clinical trials to model event rates could
394 lead to an underestimation of the baseline risk and the treatment effect, as shown in Lindh et al. ⁶⁸.
395 The mean age reported in majority of the studies was above 60 years.. Although LDL-C poses a
396 cumulative risk, lowering LDL-C levels does not always result in a reduction in cardiovascular
397 risk, and prolonged exposure to lower LDL-C from an early point in life substantially reduces the
398 risk of CHD ⁶⁹. Given the focus on populations with established CVD, most studies did not
399 examine the effects of treatment initiation at different ages. Moreover, some models used statin
400 trial data to model baseline cardiovascular risk, while others used local demographic data.
401 Another limitation is that we used funnel plots to examine publication bias because we had no
402 specific measures for non-normally distributed INB. We used the GRADE approach to assess the
403 outcome quality because there were no specific GRADE guidelines for cost-utility studies, and the
404 current approach had its limitations ⁷⁰. We could not discern a clear trend regarding whether using
405 data from clinical trials instead of observational studies in terms of baseline risk and treatment
406 effect improves the cost-effectiveness results.. The structural variation among studies could also
407 raise the overall conclusion's uncertainty. Many of these models are not publicly available which
408 limits the ability to compare between settings and countries ⁷¹. Only four studies ^{44,53,59,60} included
409 adverse events. Adherence was not modelled in any studies, even when lower adherence rates
410 have been shown to result in poorer health outcomes and higher costs for healthcare systems time
411 after time⁷²When extrapolated to other healthcare contexts, the generalisability of these results
412 should be done with careful consideration. Further, due to limited information provided, the costs
413 for co-morbidities and gender differences could not be explored.

414 **CONCLUSION:** This systematic review and meta-analysis concluded that EPS therapy is a
415 significant cost-effective option compared to other lipid-lowering therapeutic agents or placebo.

416 The subgroup analysis supported the findings in HICs, from payers' perspective, for primary
417 prevention and for the lifetime horizon. However, the robustness of the results is lost for HICs and
418 lifetime horizon when EPS therapy is compared with statin monotherapy alone, where it is not
419 significantly cost-effective. The GRADE quality assessment revealed moderate confidence in the
420 results observed in HICs for EPS therapy compared to other lipid-lowering therapeutic agents or
421 placebo and statin monotherapy. The majority of the studies were from HICs and undertook a
422 healthcare perspective, highlighting a lacuna in evidence to be filled from a societal perspective
423 and LMICs.

424
425
426
427

Table1 – Characteristics of identified studies for Systematic Review

Author_year	Country	Setting	Perspective	Target population	Time Horizon	Discount Rate	Reference year	Intervention	Comparator	Prevention	Remarks
Kohli_2006 ²⁶	Canada	Risk Group	Healthcare	CAD & non-fatal CAD (angina or acute MI)	Lifetime	5	2002	Ezetimibe+ Statin	Statin	PP+SP	Cost effective
Ara_2008 ^{1 45}	UK	Country	Healthcare	Primary Hypercholesterolemia	Lifetime	3.5	2006	Ezetimibe+ Statin	No Treatment	PP	Cost effective
Ara_2008 ^{2 46}	UK	Risk Group	Healthcare	Primary Hypercholesterolemia	Lifetime	3.5	2006	Ezetimibe+ Statin	Statin	PP	Cost effective
Ara_2008 ^{3 47*}	UK	Risk Group		ACS	Lifetime	3.5	2006	Ezetimibe+ Statin	Statin		Cost effective
Reckless_2010 ⁴⁸	USA	Risk group	Payer	Non-fatal CHD with or without DM	Lifetime	3.5	2004	Ezetimibe+ Statin	Statin	SP	Cost effective
Soini_2010 ⁴⁹	Finland	Risk group	Societal	Primary Hypercholesterolemia	Lifetime	3	2007	Ezetimibe+ Statin	Statin	SP	Cost effective
Nooten_2011 ⁵⁰	Netherland	Country	Societal	High CVD risk, history of CHD and/or DM	Lifetime	4	2008	Ezetimibe+ Statin	Statin	PP	Cost effective
Laires_2015 ²⁷	Portugal	Country	Payer	CKD but without known CHD	Lifetime	5	2015	Ezetimibe+ Statin	Statin	PP	Cost effective
Mihaylova_2016 ⁵¹	UK	Country	Healthcare	HeterozygousFH/ Preexisting ASCVD	Non-Lifetime	3.5	2015	Ezetimibe+ Statin	No Treatment	PP	Not Cost effective
Kazi_2016 ^{a 44}	USA	Country	Healthcare	HeterozygousFH/ Preexisting ASCVD	Lifetime	3	2015	Ezetimibe+ Statin	Statin	SP	Cost effective
Kazi_2016 ^{b 44}	USA	Country	Healthcare	ASCVD	Lifetime	3	2015	Ezetimibe+ Statin	PCSK9i+ Statin	SP	Cost effective
Kazi_2017 ⁵³	USA	Risk Group	Healthcare	ACS	Lifetime	3	2017	Ezetimibe+ Statin	Statin	SP	Cost effective
Almalki_2017 ⁵⁵	Saudi Arabia	Country	Healthcare	CVD history (both CHD and stroke).	Lifetime	3	2016	Ezetimibe+ Statin	Statin	SP	Cost effective
Davies_2017 ⁵²	USA	Country	Payer	CAD & non-fatal CAD (angina or acute MI)	Lifetime	3	2013	Ezetimibe+ Statin	Statin	PP+SP	Cost effective
Stam-Slob_2017 ⁵⁴	Netherland	Risk group	Healthcare	stable CAD	Lifetime	4	2014	Ezetimibe+ Statin	Statin	SP	NA
Korman_2018 ⁶¹	Norway	Country	Healthcare	Hypercholesterolemia, DM, Statin Intolerant	Lifetime	4	2015	Ezetimibe+ Statin	Statin	PP+SP	Cost effective
Stam-Slob_2018 ⁵⁶	Netherland	Risk group	Healthcare	FH without a history of vascular disease, stable vascular disease, DN	Lifetime	3	2014	Ezetimibe+ Statin	PCSK9i+ Ezetimibe+ Statin	SP	NA
Kongpakwattana_2019 ^{a 28}	Thailand	Country	Societal	Existing CVD, comprising MI and stroke	Lifetime	3	2018	Ezetimibe+ Statin	Statin	SP	Not Cost effective
Kongpakwattana_2019 ^{b 28}	Thailand	Country	Healthcare	Existing CVD, comprising MI and stroke	Lifetime	3	2018	Ezetimibe+ Statin	Statin	SP	Not Cost effective

Author_year	Country	Setting	Perspective	Target population	Time Horizon	Discount Rate	Reference year	Intervention	Comparator	Prevention	Remarks
Kazi_2019 ^{a 60}	USA	Country	Healthcare	ACS	Lifetime	3	2018	Ezetimibe+ Statin	Statin	SP	Cost effective
Kazi_2019 ^{b 60}	USA	Country	Healthcare	ACS	Lifetime	3	2018	Ezetimibe+ Statin	PCSK9i+ Statin	SP	Cost effective
Schlackow_2019 ^{a 58}	USA	Risk group	Healthcare	Non dialysis patients with CKD	Lifetime	3	2015	Ezetimibe+ Statin	Statin	PP	Cost effective
Schlackow_2019 ^{b 58}	UK	Risk group	Healthcare	Non dialysis patients with CKD	Lifetime	3.5	2015	Ezetimibe+ Statin	Statin	PP	Cost effective
Dressel_2019 ⁵⁷	Germany	Country		Stable CAD	Lifetime	3	2018	Ezetimibe+ Statin	PCSK9i+ Ezetimibe+ Statin	SP	Not Cost effective
Landmesser_2020 ²⁰	Sweden	Risk group	Payer	Recent MI /MI with a second event/MI with a risk factor	Lifetime	3	2019	Ezetimibe+ Statin	PCSK9i+ Ezetimibe+ Statin	SP	Not Cost effective
Han Yang_2020 ⁵⁹	China	country	Healthcare	Newly diagnosed with CVD	Non-Lifetime	3	2017	Ezetimibe+ Statin	Statin	SP	Cost effective

*Not included in meta-analysis, PP-primary prevention, SP-secondary prevention, PP+SP- both primary and secondary prevention

References

1. Karr S. Epidemiology and management of hyperlipidemia. *The American Journal of Managed Care* 2017;23(9 Suppl):S139-S148.
2. Navarese EP, Robinson JG, Kowalewski M, Kolodziejczak M, Andreotti F, Bliden K, et al. Association Between Baseline LDL-C Level and Total and Cardiovascular Mortality After LDL-C Lowering: A Systematic Review and Meta-analysis. *JAMA* 2018;319(15):1566-1579.
3. Stone NJ, Robinson JG, Lichtenstein AH, Bairey Merz CN, Blum CB, Eckel RH, et al. 2013 ACC/AHA guideline on the treatment of blood cholesterol to reduce atherosclerotic cardiovascular risk in adults: a report of the American College of Cardiology/American Heart Association Task Force on Practice Guidelines. *Journal of the American College of Cardiology* 2014;63(25 Part B):2889-2934.
4. Organisation Wh. Cardiovascular diseases (CVDs). In: WHO.
5. Efficacy and safety of LDL-lowering therapy among men and women: meta-analysis of individual data from 174 000 participants in 27 randomised trials. *The Lancet* 2015;385(9976):1397-1405.
6. Catapano AL, Graham I, De Backer G, Wiklund O, Chapman MJ, Drexel H, et al. 2016 ESC/EAS guidelines for the management of dyslipidaemias: the task force for the management of dyslipidaemias of the European Society of Cardiology (ESC) and European Atherosclerosis Society (EAS) developed with the special contribution of the European Association for Cardiovascular Prevention & Rehabilitation (EACPR). *Atherosclerosis* 2016;253:281-344.
7. Grundy SM, Stone NJ, Bailey AL, Beam C, Birtcher KK, Blumenthal RS, et al. 2018 AHA/ACC/AACVPR/AAPA/ABC/ACPM/ADA/AGS/APhA/ASPC/NLA/PCNA guideline on the management of blood cholesterol: executive summary: a report of the American College of Cardiology/American Heart Association Task Force on Clinical Practice Guidelines. *Journal of the American College of Cardiology* 2019;73(24):3168-3209.
8. Mihaylova B, Emberson J, Blackwell L, Keech A, Simes J, Barnes E, et al. The effects of lowering LDL cholesterol with statin therapy in people at low risk of vascular disease: meta-analysis of individual data from 27 randomised trials. *Lancet (London, England)* 2012;380(9841):581-590.
9. Bavry AA, Mood GR, Kumbhani DJ, Borek PP, Askari AT, Bhatt DL. Long-Term Benefit of Statin Therapy Initiated during Hospitalization for an Acute Coronary Syndrome: A Systematic Review of Randomized Trials. *American Journal of Cardiovascular Drugs* 2007;7(2):135-141.
10. Brugts JJ, Yetgin T, Hoeks SE, Gotto AM, Shepherd J, Westendorp RGJ, et al. The benefits of statins in people without established cardiovascular disease but with cardiovascular risk factors: meta-analysis of randomised controlled trials. *BMJ* 2009;338(jun30 1):b2376-b2376.
11. Boekholdt SM, Hovingh GK, Mora S, Arsenault BJ, Amarenco P, Pedersen TR, et al. Very low levels of atherogenic lipoproteins and the risk for cardiovascular events: a meta-analysis of statin trials. *Journal of the American College of Cardiology* 2014;64(5):485-494.
12. Tataronis GR. Statin-Related Adverse Events: A Meta-Analysis. *Clinical Therapeutics* 2006;28(1).

13. Kosoglou T, Meyer I, Veltri EP, Statkevich P, Yang B, Zhu Y, et al. Pharmacodynamic interaction between the new selective cholesterol absorption inhibitor ezetimibe and simvastatin. *British journal of clinical pharmacology* 2002;54(3):309-319.
14. Sudhop T, Lütjohann D, Kodal A, Igel M, Tribble DL, Shah S, et al. Inhibition of intestinal cholesterol absorption by ezetimibe in humans. *Circulation* 2002;106(15):1943-1948.
15. Cannon CP, Blazing MA, Giugliano RP, McCagg A, White JA, Theroux P, et al. Ezetimibe added to statin therapy after acute coronary syndromes. *New England Journal of Medicine* 2015;372(25):2387-2397.
16. Morrone D, Weintraub WS, Toth PP, Hanson ME, Lowe RS, Lin J, et al. Lipid-altering efficacy of ezetimibe plus statin and statin monotherapy and identification of factors associated with treatment response: a pooled analysis of over 21,000 subjects from 27 clinical trials. *Atherosclerosis* 2012;223(2):251-261.
17. Claxton K, Sculpher M, McCabe C, Briggs A, Akehurst R, Buxton M, et al. Probabilistic sensitivity analysis for NICE technology assessment: not an optional extra. *Health economics* 2005;14(4):339-347.
18. Lloyd-Jones DM, Morris PB, Ballantyne CM, Birtcher KK, Daly DD, DePalma SM, et al. 2017 focused update of the 2016 ACC expert consensus decision pathway on the role of non-statin therapies for LDL-cholesterol lowering in the management of atherosclerotic cardiovascular disease risk: a report of the American College of Cardiology Task Force on Expert Consensus Decision Pathways. *Journal of the American College of Cardiology* 2017;70(14):1785-1822.
19. Orringer CE, Jacobson TA, Saseen JJ, Brown AS, Gotto AM, Ross JL, et al. Update on the use of PCSK9 inhibitors in adults: Recommendations from an Expert Panel of the National Lipid Association. *Journal of clinical lipidology* 2017;11(4):880-890.
20. Ulf Landmesser PL, Emil Hagström, Ben van Hout,, Guillermo Villa PP-R, Jorge Arellano, Maria Eriksson Svensson, Mahendra Sibartie, and Gregg C Fonarow. Cost-effectiveness of PCSK9 inhibition with evolocumab in patients with a history of myocardial infarction in Sweden. *European heart journal Quality of care & clinical outcomes* 2020.
21. Robinson JG, Jayanna MB, Brown AS, Aspary K, Orringer C, Gill EA, et al. Enhancing the value of PCSK9 monoclonal antibodies by identifying patients most likely to benefit. A consensus statement from the National Lipid Association. *Journal of clinical lipidology* 2019;13(4):525-537.
22. Chaiyasothi T, Nathisuwan S, Dilokthornsakul P, Vathesatogkit P, Thakkinstian A, Reid C, et al. Effects of non-statin lipid-modifying agents on cardiovascular morbidity and mortality among statin-treated patients: a systematic review and network meta-analysis. *Frontiers in pharmacology* 2019;10:547.
23. Bagepally BS, Sasidharan A. Incremental net benefit of lipid-lowering therapy with PCSK9 inhibitors: a systematic review and meta-analysis of cost-utility studies. *European Journal of Clinical Pharmacology* 2021.
24. Arbel R, Hammerman A, Azuri J. Usefulness of Ezetimibe Versus Evolocumab as Add-On Therapy for Secondary Prevention of Cardiovascular Events in Patients With Type 2 Diabetes Mellitus. *Am J Cardiol* 2019;123(8):1273-1276.
25. Qamar A, Giugliano RP, Bohula EA, Park J-G, Jarolim P, Murphy SA, et al. Biomarkers and Clinical Cardiovascular Outcomes With Ezetimibe in the IMPROVE-IT Trial. *Journal of the American College of Cardiology* 2019;74(8):1057-1068.
26. Kohli M, Attard C, Lam A, Huse D, Cook J, Bourgault C, et al. Cost effectiveness of adding ezetimibe to atorvastatin therapy in patients not at cholesterol treatment goal in Canada. *Pharmacoeconomics* 2006;24(8):815-830.

27. Laires PA, Ejzykowicz F, Hsu T-Y, Ambegaonkar B, Davies G. Cost-effectiveness of adding ezetimibe to atorvastatin vs switching to rosuvastatin therapy in Portugal. *J Med Econ* 2015;18(8):565-572.
28. Kongpakwattana K, Ademi Z, Chaiyasothi T, Nathisuwan S, Zomer E, Liew D, et al. Cost-Effectiveness Analysis of Non-Statin Lipid-Modifying Agents for Secondary Cardiovascular Disease Prevention Among Statin-Treated Patients in Thailand. *Pharmacoeconomics* 2019;37(10):1277-1286.
29. Moher D SL, PRISMA-P Group,. Preferred reporting items for systematic review and meta-analysis protocols (PRISMA-P) 2015 statement. . *Syst Rev* 2015;4(1):1.
30. Registry C. Center for the Evaluation of Value and Risk in Health. In.
31. Ouzzani M HH, Fedorowicz Z, Elmagarmid A. Rayyan-a web and mobile app for systematic reviews. *Syst Rev* 2016;5(1):210.
32. Rohatgi A. WebPlotDigitizer. In. USA; 2021.
33. Bagepally BS, Gurav YK, Anothaisintawee T, Youngkong S, Chaikledkaew U, Thakkinstian A. Cost Utility of Sodium-Glucose Cotransporter 2 Inhibitors in the Treatment of Metformin Monotherapy Failed Type 2 Diabetes Patients: A Systematic Review and Meta-Analysis. *Value Health* 2019;22(12):1458-1469.
34. Paulden M. Why it's Time to Abandon the ICER. *Pharmacoeconomics* 2020;38(8):781-784.
35. O'Mahony JF. The Limitations of Icers In Screening Interventions and The Relative Net Benefit Alternative. *Value in Health* 2015;18(7).
36. Bagepally BS, Chaikledkaew U, Gurav YK, Anothaisintawee T, Youngkong S, Chaiyakunapruk N, et al. Glucagon-like peptide 1 agonists for treatment of patients with type 2 diabetes who fail metformin monotherapy: systematic review and meta-analysis of economic evaluation studies. *BMJ Open Diabetes Res Care* 2020;8(1).
37. Crespo C, Monleon A, Díaz W, Ríos M. Comparative efficiency research (COMER): meta-analysis of cost-effectiveness studies. *BMC medical research methodology* 2014;14(1):1-9.
38. Bank TW. World Bank Country and Lending Groups – World Bank Data Help Desk. In; 2021.
39. Corporation. M. Microsoft Excel [Internet]. In; 2018.
40. StataCorp. Stata Statistical Software: Release 16. In. 16 ed: College Station, TX: StataCorp LLC.; 2019.
41. Adarkwah CC vGP, Hiligsmann M, Evers SMAA. Risk of bias in model-based economic evaluations: the ECOBIAS checklist. *Expert Review of Pharmacoeconomics & Outcomes Research* 2016;16(4):513-523.
42. Guyatt G, Oxman AD, Akl EA, Kunz R, Vist G, Brozek J, et al. GRADE guidelines: 1. Introduction—GRADE evidence profiles and summary of findings tables. *Journal of Clinical Epidemiology* 2011;64(4):383-394.
43. Hultcrantz M, Rind D, Akl EA, Treweek S, Mustafa RA, Iorio A, et al. The GRADE Working Group clarifies the construct of certainty of evidence. *Journal of Clinical Epidemiology* 2017;87:4-13.
44. Kazi DS, Moran AE, Coxson PG, Penko J, Ollendorf DA, Pearson SD, et al. Cost-effectiveness of PCSK9 Inhibitor Therapy in Patients With Heterozygous Familial Hypercholesterolemia or Atherosclerotic Cardiovascular Disease. *JAMA* 2016;316(7):743.
45. Ara R, Pandor A, Tumur I, Paisley S, Duenas A, Williams R, et al. Cost effectiveness of ezetimibe in patients with cardiovascular disease and statin intolerance or contraindications: a Markov model. *Am J Cardiovasc Drugs* 2008;8(6):419-427.
46. Ara R, Pandor A, Tumur I, Paisley S, Duenas A, Williams R, et al. Estimating the health benefits and costs associated with ezetimibe coadministered with statin therapy

- compared with higher dose statin monotherapy in patients with established cardiovascular disease: Results of a Markov model for UK costs using data registries. *Clin Ther* 2008;30(8):1508-1523.
47. Ara R, Tumur I, Pandor A, Duenas A, Williams R, Wilkinson A, et al. Ezetimibe for the treatment of hypercholesterolaemia: A systematic review and economic evaluation. *Health Technol Assess* 2008;12(21):1-92.
 48. Reckless J, Davies G, Tunceli K, Hu XH, Brudi P. Projected cost-effectiveness of ezetimibe/simvastatin compared with doubling the statin dose in the United Kingdom: Findings from the INFORCE study. *Value Health* 2010;13(6):726-734.
 49. Soini EJO, Davies G, Martikainen JA, Hu HX, Tunceli K, Niskanen L. Population-based health-economic evaluation of the secondary prevention of coronary heart disease in Finland. *Curr Med Res Opin* 2010;26(1):25-36.
 50. F. van Nooten GMD, J. W. Jukema, A. H. Liem, E. Yap, X. H. Hu. Economic evaluation of ezetimibe combined with simvastatin for the treatment of primary hypercholesterolaemia. *Netherlands heart journal : monthly journal of the Netherlands Society of Cardiology and the Netherlands Heart Foundation* 2011;19(2):61-7.
 51. Mihaylova B S, Herrington W, Lozano-Kühne J , Kent S, Emberson J, Reith C, Haynes R, Cass A, Craig J, Gray A, Collins R, Landray M, , C B. Cost-effectiveness of Simvastatin plus Ezetimibe for Cardiovascular Prevention in CKD: Results of the Study of Heart and Renal Protection (SHARP). *American journal of kidney diseases : the official journal of the National Kidney Foundation* 2016;67(4):576-84.
 52. Davies GM, Vyas A, Baxter CA. Economic evaluation of ezetimibe treatment in combination with statin therapy in the United States. *J Med Econ* 2017;20(7):723-731.
 53. Kazi DS, Penko J, Coxson PG, Moran AE, Ollendorf DA, Tice JA, et al. Updated cost-effectiveness analysis of PCSK9 inhibitors based on the results of the FOURIER trial. *JAMA* 2017;318(8):748-750.
 54. Stam-Slob MC, van der Graaf Y, Greving JP, Dorresteijn JAN, Visseren FLJ. Cost-effectiveness of intensifying lipid-lowering therapy with statins based on individual absolute benefit in coronary artery disease patients. *Journal of the American Heart Association* 2017;6(2).
 55. Almalki ZS, Guo JJ, Alahmari A, Alotaibi N, Thaibah H. Cost-Effectiveness of Simvastatin Plus Ezetimibe for Cardiovascular Prevention in Patients With a History of Acute Coronary Syndrome: Analysis of Results of the IMPROVE-IT Trial. *Heart, Lung and Circulation* 2018;27(6):656-665.
 56. Stam-Slob MC, van der Graaf Y, de Boer A, Greving JP, Visseren FLJ. Cost-effectiveness of PCSK9 inhibition in addition to standard lipid-lowering therapy in patients at high risk for vascular disease. *Int J Cardiol* 2018;253:148-154.
 57. Dressel A, Schmidt B, Schmidt N, Laufs U, Fath F, Chapman MJ, et al. Cost effectiveness of lifelong therapy with PCSK9 inhibitors for lowering cardiovascular events in patients with stable coronary artery disease: Insights from the Ludwigshafen Risk and Cardiovascular Health cohort. *Vasc Pharmacol* 2019;120.
 58. Iryna Schlackow SK, William Herrington³, Jonathan Emberson, Richard Haynes, Christina Reith, Rory Collins, Martin J. Landray, Alastair Gray, Colin Baigent and Borislava Mihaylova Cost-effectiveness of lipid lowering with statins and ezetimibe in chronic kidney disease. *Kidney International* 2019;96(1):170-179.
 59. Yang H, Li N, Zhou Y, Xiao Z, Tian H, Hu M, et al. Cost-effectiveness analysis of Ezetimibe as the add-on treatment to moderate-dose rosuvastatin versus high-dose rosuvastatin in the secondary prevention of cardiovascular diseases in China: A Markov model analysis. *Drug Des Dev Ther* 2020;14:157-165.

60. Kazi DS, Penko J, Coxson PG, Guzman D, Wei PC, Bibbins-Domingo K. Cost-Effectiveness of Alirocumab: A Just-in-Time Analysis Based on the ODYSSEY Outcomes Trial. *Annals of Internal Medicine* 2019;170(4):221.
61. Korman M, Wisløff T. Modelling the cost-effectiveness of PCSK9 inhibitors vs. ezetimibe through LDL-C reductions in a Norwegian setting. *European Heart Journal - Cardiovascular Pharmacotherapy* 2018;4(1):15-22.
62. Adarkwah CC, van Gils PF, Hiligsmann M, Evers SM. Risk of bias in model-based economic evaluations: the ECOBIAS checklist. *Expert Rev Pharmacoecon Outcomes Res* 2016;16(4):513-23.
63. Husain MJ, Datta BK, Kostova D, Joseph KT, Asma S, Richter P, et al. Access to cardiovascular disease and hypertension medicines in developing countries: an analysis of essential medicine Lists, price, availability, and affordability. *Journal of the American Heart Association* 2020;9(9):e015302.
64. Wirtz VJ, Kaplan WA, Kwan GF, Laing RO. Access to medications for cardiovascular diseases in low-and middle-income countries. *Circulation* 2016;133(21):2076-2085.
65. Marquina C, Zomer E, Vargas-Torres S, Zoungas S, Ofori-Asenso R, Liew D, et al. Novel Treatment Strategies for Secondary Prevention of Cardiovascular Disease: A Systematic Review of Cost-Effectiveness. *PharmacoEconomics* 2020;38(10):1095-1113.
66. Suh D-C, Griggs SK, Henderson ER, Lee S-M, Park T. Comparative effectiveness of lipid-lowering treatments to reduce cardiovascular disease. *Expert Review of Pharmacoeconomics & Outcomes Research* 2018;18(1):51-69.
67. (NICE) NifHaCE. Guide to the methods of technology appraisal 2013. In; 04 April 2013. p. 94.
68. Lindh M, Banefelt J, Fox KM, Hallberg S, Tai M-H, Eriksson M, et al. Cardiovascular event rates in a high atherosclerotic cardiovascular disease risk population: estimates from Swedish population-based register data. *European Heart Journal - Quality of Care and Clinical Outcomes* 2019;5(3):225-232.
69. Ference BA, Yoo W, Alesh I, Mahajan N, Mirowska KK, Mewada A, et al. Effect of long-term exposure to lower low-density lipoprotein cholesterol beginning early in life on the risk of coronary heart disease: a Mendelian randomization analysis. *Journal of the American College of Cardiology* 2012;60(25):2631-2639.
70. Brozek JL, Canelo-Aybar C, Akl EA, Bowen JM, Bucher J, Chiu WA, et al. GRADE Guidelines 30: the GRADE approach to assessing the certainty of modeled evidence—An overview in the context of health decision-making. *Journal of Clinical Epidemiology* 2021;129:138-150.
71. Wu EQ, Zhou Z-Y, Xie J, Metallo C, Thokala P. Transparency in Health Economic Modeling: Options, Issues and Potential Solutions. *PharmacoEconomics* 2019;37(11):1349-1354.
72. Cutler RL, Fernandez-Llimos F, Frommer M, Benrimoj C, Garcia-Cardenas V. Economic impact of medication non-adherence by disease groups: a systematic review. *BMJ Open* 2018;8(1):e016982.

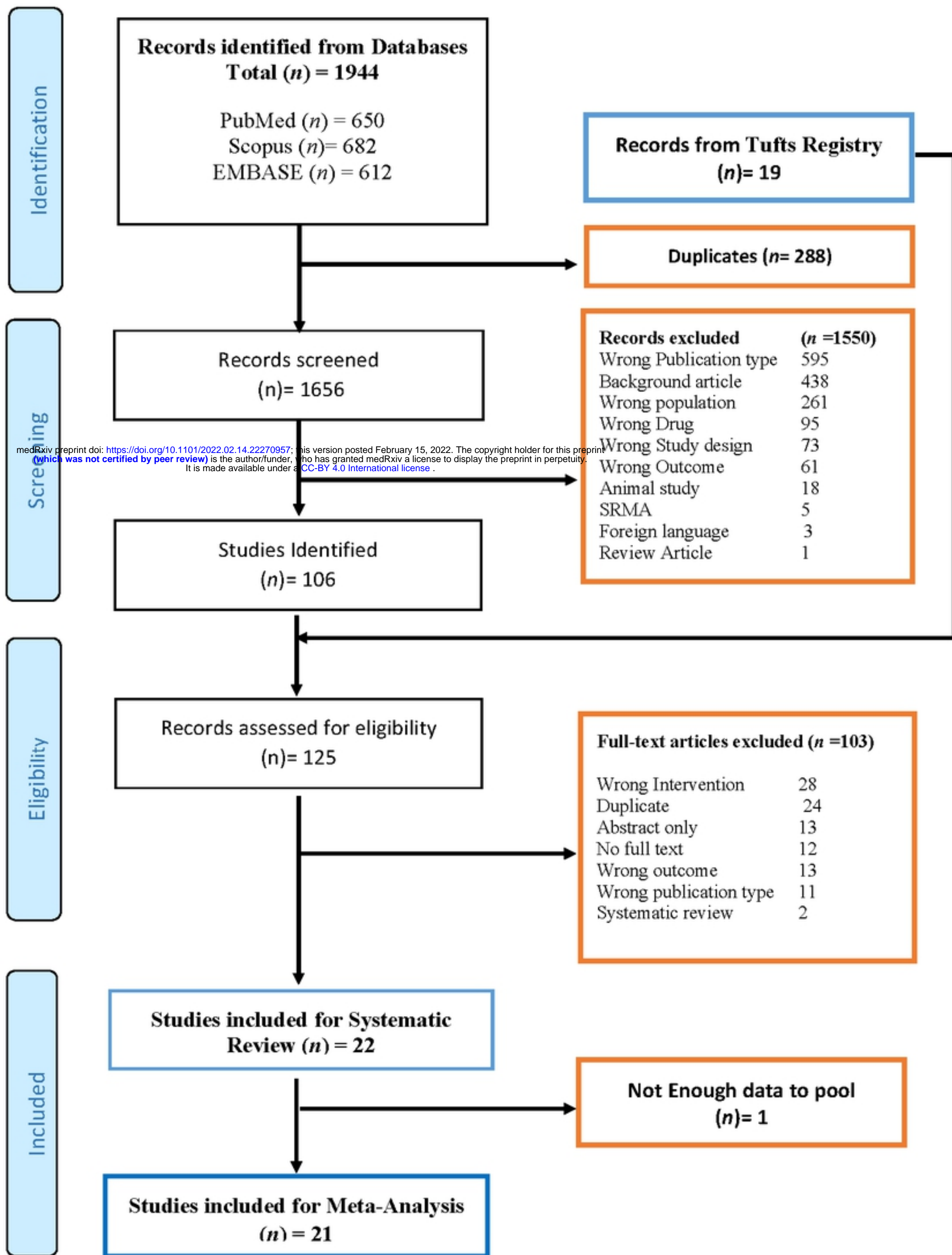
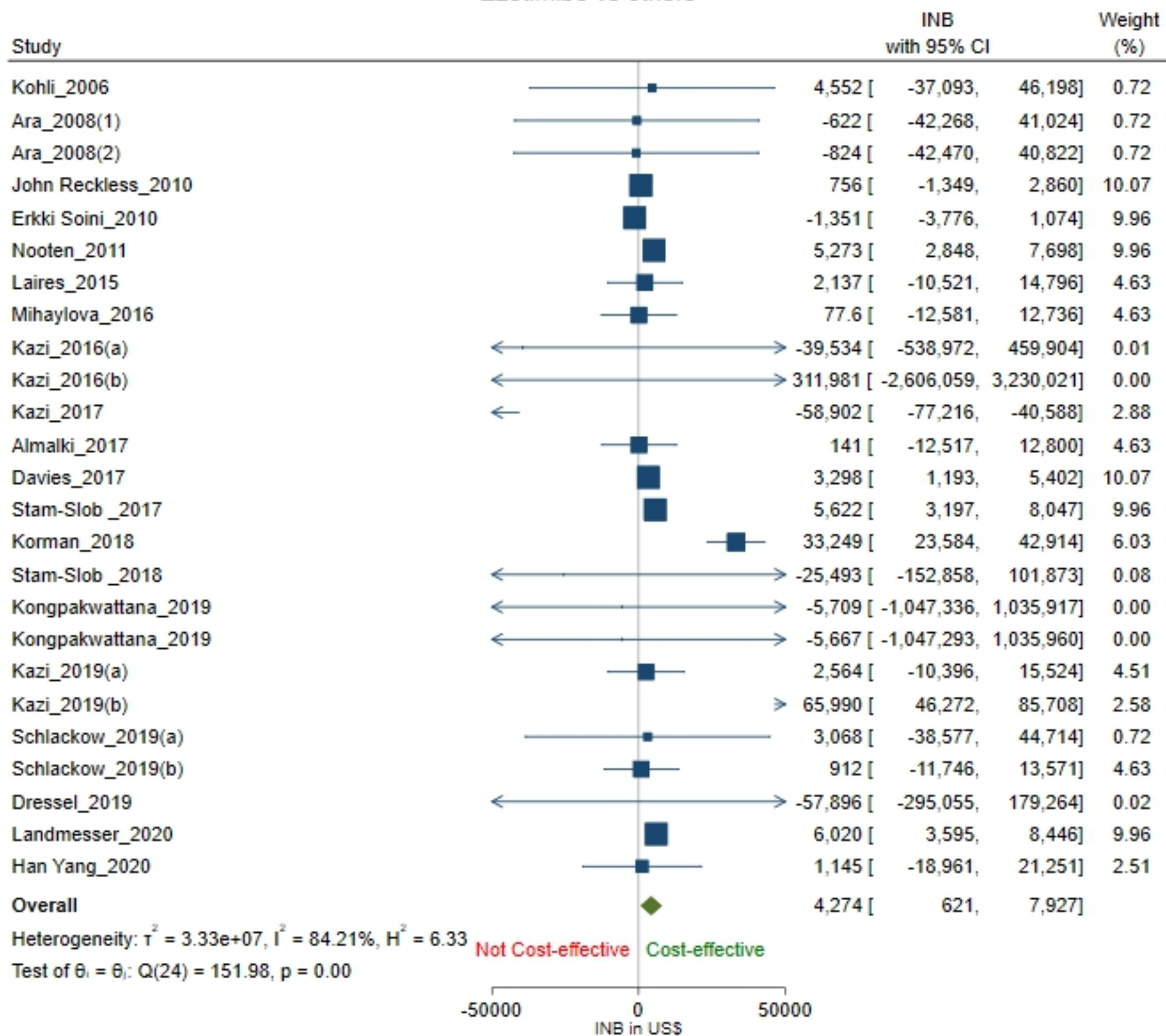


Figure 1

Ezetimibe vs others



Random-effects DerSimonian-Laird model
 Sorted by: Year

Figure 2