

# Global Prevalence of Post-Acute Sequelae of COVID-19 (PASC) or Long COVID: A Meta-Analysis and Systematic Review

## Authors:

Chen Chen, MA<sup>1,\*</sup>, Spencer R. Hauptert, BS<sup>1,\*</sup>, Lauren Zimmermann, BSc<sup>1,2</sup>, Xu Shi, PhD<sup>1</sup>, Lars G. Fritsche, PhD<sup>1,3,4</sup>, Bhramar Mukherjee, PhD<sup>1,2,3,4,5</sup>

## Affiliations:

<sup>1</sup> Department of Biostatistics, University of Michigan School of Public Health, Ann Arbor, MI 48109, USA

<sup>2</sup> Center for Precision Health Data Science, University of Michigan, Ann Arbor, MI 48109, USA

<sup>3</sup> Rogel Cancer Center, University of Michigan Medicine, Ann Arbor, MI 48109, USA

<sup>4</sup> Center for Statistical Genetics, University of Michigan School of Public Health, Ann Arbor, MI 48109, USA

<sup>5</sup> Department of Epidemiology, University of Michigan School of Public Health, Ann Arbor, MI 48109, USA

\* Equal contributions

## Correspondence to:

Bhramar Mukherjee, PhD  
Department of Biostatistics  
University of Michigan School of Public Health  
1415 Washington Heights  
Ann Arbor, MI 48109.  
Email: [bhramar@umich.edu](mailto:bhramar@umich.edu)

## **Abstract**

### **Importance**

As SARS-CoV-2 pervades worldwide, considerable focus has been placed on the longer lasting health effects of the virus on the human host and on the anticipated healthcare needs.

### **Objective**

The primary aim of this study is to examine the prevalence of post-acute sequelae of COVID-19 (PASC), commonly known as long COVID, across the world and to assess geographic heterogeneities through a systematic review and meta-analysis. A second aim is to provide prevalence estimates for individual symptoms that have been commonly reported as PASC, based on the existing literature.

### **Data Sources**

PubMed, Embase, and iSearch for preprints from medRxiv, bioRxiv, SSRN, and others, were searched on July 5, 2021 with verification extending to August 12, 2021.

### **Study Selection**

Studies written in English that consider PASC (indexed as ailments persisting at least 28 days after diagnosis or recovery for SARS-CoV-2 infection) and that examine corresponding prevalence, risk factors, duration, or associated symptoms were included. A total of 40 studies were included with 9 from North America, 1 from South America, 17 from Europe, 11 from Asia, and 2 from other regions.

### **Data Extraction and Synthesis**

Data extraction was performed and separately cross-validated on the following data elements: title, journal, authors, date of publication, outcomes, and characteristics related to the study sample and study design. Using a random effects framework for meta-analysis with DerSimonian-Laird pooled inverse-variance weighted estimator, we provide an interval estimate of PASC prevalence, globally, and across regions. This meta-analysis considers variation in

PASC prevalence by hospitalization status during the acute phase of infection, duration of symptoms, and specific symptom categories.

### **Main Outcomes and Measures**

Prevalence of PASC worldwide and stratified by regions.

### **Results**

Global estimated pooled PASC prevalence derived from the estimates presented in 29 studies was 0.43 (95% confidence interval [CI]: 0.35, 0.63), with a higher pooled PASC prevalence estimate of 0.57 (95% CI: 0.45, 0.68), among those hospitalized during the acute phase of infection. Females were estimated to have higher pooled PASC prevalence than males (0.49 [95% CI: 0.35, 0.63] versus 0.37 [95% CI: 0.24, 0.51], respectively). Regional pooled PASC prevalence estimates in descending order were 0.49 (95% CI: 0.21, 0.42) for Asia, 0.44 (95% CI: 0.30, 0.59) for Europe, and 0.30 (95% CI: 0.32, 0.66) for North America. Global pooled PASC prevalence for 30, 60, 90, and 120 days after index test positive date were estimated to be 0.36 (95% CI: 0.25, 0.48), 0.24 (95% CI: 0.13, 0.39), 0.29 (95% CI: 0.12, 0.57) and 0.51 (95% CI: 0.42, 0.59), respectively. Among commonly reported PASC symptoms, fatigue and dyspnea were reported most frequently, with a prevalence of 0.23 (95% CI: 0.13, 0.38) and 0.13 (95% CI: 0.09, 0.19), respectively.

### **Conclusions and Relevance**

The findings of this meta-analysis suggest that, worldwide, PASC comprises a significant fraction (0.43 [95% CI: 0.35, 0.63]) of COVID-19 tested positive cases and more than half of hospitalized COVID-19 cases, based on available literature as of August 12, 2021. Geographic differences appear to exist, as lowest to highest PASC prevalence is observed for North America (0.30 [95% CI: 0.32, 0.66]) to Asia (0.49 [95% CI: 0.21, 0.42]). The case-mix across studies, in terms of COVID-19 severity during the acute phase of infection and variation in the clinical definition of PASC, may explain some of these differences. Nonetheless, the health

effects of COVID-19 appear to be prolonged and can exert marked stress on the healthcare system, with 237M reported COVID-19 cases worldwide as of October 12, 2021.

## Key Points

### Question

Among those infected with COVID-19, what is the global and regional prevalence of post-acute sequelae COVID-19 (PASC)?

### Findings

Globally, the pooled PASC prevalence estimate was 0.43, whereas the pooled PASC prevalence estimate for patients who had to be hospitalized due to COVID-19 was 0.57.

Regionally, estimated pooled PASC prevalence from largest to smallest effect size were 0.49 for Asia, 0.44 for Europe, and 0.30 for North America. Global pooled PASC prevalence for 30, 60, 90, and 120 days after index date were estimated to be 0.36, 0.24, 0.29, and 0.51, respectively.

Among commonly reported PASC symptoms, fatigue and dyspnea were reported most frequently, with a prevalence of 0.23 and 0.13.

### Meaning

In follow-up studies of patients with COVID-19 infections, PASC was common both globally and across geographic regions, with studies from Asia reporting the highest prevalence.

## Introduction

Coronavirus Disease 2019 (COVID-19), a highly transmissible disease caused by the severe acute respiratory syndrome coronavirus 2 (SARS-CoV-2), has presented extraordinary challenges to the global healthcare system. Fever, dry cough, fatigue, anosmia, and dyspnea are some of the most common symptoms associated with the acute phase of infection.<sup>1</sup> Additionally, albeit less commonly, symptoms affecting a wide range of organ systems including the brain, kidney, and heart may also accompany a COVID-19 infection.<sup>2</sup> With respect to the burden of the virus worldwide, there have been over 237 million COVID-19 cases and over 4.8 million deaths, as of October 12, 2021.<sup>3</sup> Although the vast majority of those infected survive with an ensuing estimated case fatality rate of 2%, survivors of COVID-19 are known to be at-risk for a variety of sequelae— a condition known as Post-Acute Sequelae of COVID-19 (PASC).<sup>4</sup> Further obscuring this picture, there is also a large fraction of covert infections due to a multitude of reasons including asymptomatic infections,<sup>5</sup> barrier to testing<sup>6,7</sup> and underreporting.<sup>8,9</sup> Indeed, a recent, extensive review estimated the worldwide pooled asymptomatic percentage of COVID-19 infections to be 35.1% (95% CI: 30.7 to 39.9%), as of August 2021.<sup>10</sup> Tying to the former, covert infections need be considered with respect to the scope of the prolonged health effects of COVID-19.

In the literature, the occurrence of long-term ailments of COVID-19 appears in a variety of names including PASC, Long COVID, Post-Acute COVID-19 Syndrome (PACS), Chronic COVID-19, and Long Haul COVID-19. It is commonly defined as new or persistent symptoms at 4 or more weeks from infection with SARS-CoV-2.<sup>4</sup> Carfi et al. were among the first to report post-COVID-19 complications, finding 87.4% of hospitalized patients had at least one persistent symptom at a mean of 60.3 days after symptom onset.<sup>11</sup> Early in 2021, a large UK-based study found that rates of respiratory disease, diabetes, and cardiovascular disease were 6.0 (95% CI:

5.7, 6.2), 1.5 (95% CI: 1.4, 1.6), and 3.0 (95% CI: 2.7, 3.2) times higher, respectively, in those with a COVID-19 diagnosis as compared to matched controls at a mean follow-up of 140 days.<sup>12</sup> A more recent meta-analysis estimated 80% of those infected with SARS-CoV-2 develop at least one long-term symptom, with the most prevalent symptoms being fatigue, headache, attention disorder, hair loss, and dyspnea.<sup>13</sup> However, as the meta-analysis was conducted in the earlier stage of the pandemic, the review was limited by the inherently smaller sample size of infected individuals underlying the existing studies at that time. Upon this base, further research was forged into the potential factors that see increased PASC prevalence.

Time since infection, acute phase severity, geographic region, and select sociodemographic characteristics, such as age and sex, are among the constellation of factors likely to influence PASC prevalence estimates. Although a large proportion of the current evidence focuses on the hospitalized COVID-19 population, a German study found 34.8% of COVID-19 patients, with only a mild acute infection, had PASC at 7 months.<sup>14</sup> To illustrate the geographic heterogeneity seen in PASC prevalence estimates, specific studies from the USA, Italy, and China report prevalence of 28%, 51%, and 76%, respectively.<sup>15–17</sup> Regarding demographic factors, Sudre et al. found female sex to be associated with developing PASC.<sup>18</sup> Although no existing global reviews (at the time of this report) present age-specific PASC prevalence, Nasserie et al. (2021) offer some evidence that prolonged symptoms are not distinct to older versus younger age groups.<sup>19</sup> That is, although the bulk of PASC exhibiting individuals across the included studies were older (median age near 60 years), younger age groups were also found to comprise a non-negligible number of those with persistent symptoms.<sup>19</sup> Existing research suggests older age to be associated with a moderate increased risk of persisting symptoms (for ten-year increments past age of 40, estimated odds ratio (OR) is 1.10 [95% CI: 1.01-1.19]).<sup>20</sup> Moreover, the existing inequities by race/ethnicity as it pertains to PASC remain largely unexplored,<sup>21</sup> despite the same having been shown for COVID-19. Select comorbidities have been identified

as being associated with PASC in the existent literature (e.g., increased risk of PASC among individuals with asthma,<sup>18</sup> though these findings are generally in early stages).

Following these collective efforts, we too emphasize that PASC must be well-defined and well-understood to enable data to inform clinical decision-making and guidance, and thereby, aid the millions of affected individuals worldwide. At this juncture of being nearly two years into the COVID-19 pandemic, numerous large, high-quality studies on PASC, with substantial follow-up time, have been conducted. Expanding on previous meta-analyses hampered by smaller sample sizes and shorter follow-up times, this systematic review and meta-analysis aims to provide a comprehensive synthesis of information on prevalence and symptoms of PASC to-date. Based on previous research, we hypothesize that PASC is common across geographic and demographic groups, with respiratory, neurological, cardiac, and psychological symptoms having the highest prevalence. We close with some avenues for future research considerations, as highlighted by the findings of this review.

## Methods

### Search Strategy

We employed PICO and PRISMA frameworks to guide our entire research process (**eTable 1**).<sup>22</sup> The literature databases, PubMed and Embase for published articles, as well as iSearch for preprint articles from bioRxiv, medRxiv, SSRN, Research Square, and preprints.org, were searched on July 5, 2021, and search verification was extended through August 12, 2021. The search aimed to capture papers relating to PASC and that examine prevalence, risk factors, and/or duration, published during the years 2020-2021, and written in English. We adapted some search components from a public resource made available by Yale University Libraries.<sup>23</sup> The full search strategy, including filters for each database, is presented in **eMethods 1**.



## Screening Procedure

A two-step approach to screening was used with an initial title/abstract screening, followed by a full-text screening, and an ultimate discussion and re-examination to resolve conflicting marks. Screeners 1 and 2 performed both phases of the screening independently (i.e., were blinded). Rayyan, a web-based application, was used as a tool to help expedite literature screening for systematic reviews.<sup>24</sup>

Our inclusion criteria were as follows: (1) human study population with confirmed COVID-19 diagnosis through PCR test, antibody test, or diagnosis, (2) index date of first test/diagnosis, date of hospitalization, discharge date, or date of clinical recovery/negative test, (3) primary outcome must include prevalence, risk factors, duration, or symptoms of PASC, and (4) the follow-up time is at least 28 days after the index date. We excluded case studies, reviews, studies with imaging or molecular/cellular testing as primary results, and studies with only healthcare workers or residents of nursing homes/long-term care facilities. We also excluded studies that did not meet the sample size threshold of 323, pre-calculated herein. The reason for this is to ensure the included studies were adequately powered to achieve a margin of error of at least 0.05 on the provided PASC prevalence estimate. The sample size threshold was calculated with an estimated prevalence of 30% and for a 95% Wald-type confidence interval for binomial proportion; see **eMethods 2** for further details.

## Data Extraction

After studies were selected, the following relevant data elements were manually extracted separately by both screeners 1 and 2: article title, authors, date of publication, study purpose, study design, population, setting, country, sample size, method of COVID-19 confirmation, index date, follow-up time, demographic variables (i.e., age and sex), and outcomes examined. In the

instance of multiple study versions with the same underlying population, we used the most recently published article.

## **Outcomes and measures**

The primary outcome was the prevalence of PASC and symptoms at least 28 days after the index date. We defined PASC as having any symptoms, or at least one new or persisting symptom during the follow-up time. The follow-up time of COVID-19 patients across studies was divided into the following four groups: PASC persisting at 28-30 days (labeled as 30 days), 60 days, 90 days, and 120 days after the index date. We combined similar symptoms into a broader concept. For example, we joined together dyspnea, shortness of breath, and problem of breathing reported in different studies into a broader symptom concept of dyspnea (see **eTable 2**). Studies were classified into the following three groups based on the study population of PASC: (1) studies with non-hospitalized COVID-19 positive individuals, (2) studies with hospitalized COVID-19 positive individuals, (3) studies with all COVID-19 positive individuals (i.e., a case-mix with hospitalized and non-hospitalized individuals). In addition to prevalence, we were also interested in the risk factors for PASC as secondary outcomes.

## **Statistical Analysis**

Meta-analysis with random effects and generic inverse variance weighting was performed to estimate the prevalence of PASC and symptoms, for outcomes reported in at least five studies. Of further note is that upon examining the distribution of PASC prevalence, we apply a logit transformation to the proportion. The confidence interval was calculated incorporating between-study variance obtained by the DerSimonian-Laird (DL) estimator (**eMethods 3**). Heterogeneity among studies was reflected by the  $I^2$  statistic, where  $I^2$  between 75% and 100% indicates considerable heterogeneity. We further stratified our analysis by (1) study population type (hospitalized versus mixed hospitalized and non-hospitalized), (2) sex (female versus male), (3)

follow-up time, (4) region (Asia, Europe, and USA). Another stratified analysis is presented in the supplement (see **eFigure 1**) wherein pooled PASC prevalence is estimated (A) among studies defining PASC to be persisting symptoms (i.e., extended beyond a pre-specified number of days) and (B) among studies defining PASC to be at least one symptom or not recovered from COVID-19. All analyses were conducted in R (version 4.0.2) using packages *meta*<sup>25,26</sup> and *metafor*.<sup>27</sup>

For critical appraisal, we used a checklist-based tool from Joanna Briggs Institute (JBI), corresponding to prevalence studies and hence, enabling assessment of risk of bias among the included study designs.<sup>28</sup> Assessment of publication bias was carried out visually by generating funnel plot and formally by conducting Egger's and Begg's tests for funnel plot asymmetry (for further details, see **eMethods 4** and **eFigure 2**).

## Results

### Search Results

In our main literature search, we identified 4,438 unique citations of which 270 had titles or abstracts that passed our criteria for a full-text assessment. After the full-text screen, we deemed 40 studies eligible for a qualitative synthesis, of which we further meta-analyzed reported measures from 34 with compatible outcomes. See the PRISMA flow diagram (**Figure 1**) and **eTable 3** for details concerning study inclusion/exclusion criteria. In efforts to further verify the search results, we performed a second literature search one month after the first screen, although no additional eligible studies were identified (**eMethods 1** and **eFigure 3**).

### Study Characteristics

**Table 1** shows the characteristics of all 40 included articles. The studies comprised a total of 886,388 COVID-19 positive patients that we categorized into non-hospitalized (3,371 patients from 4 studies), hospitalized (61,247 patients from 17 studies), and any COVID-19 positive patients regardless of severity or hospitalization status (821,770 individuals from 19 studies). While only studies with at least 4 weeks follow-up were selected, several studies had data on substantially longer follow-up times: for at least 8 weeks (36 studies), 12 weeks (33 studies), and 6 months (17 studies). **Figure 1** lists additional study characteristics.

### **PASC Prevalence**

Among the 34 included studies in the quantitative synthesis, we meta-analyzed the 29 studies reporting an overall prevalence of PASC. Pooled global PASC prevalence was estimated to be 0.43 (95% CI: 0.35, 0.63) (**Table 2**). Substantial heterogeneity was observed among the included studies ( $I^2 = 100\%$ ,  $P < 0.001$ ). Estimates ranged widely from 0.09 to 0.81 which may in part be driven by differences in terms of sex, region, COVID-19 study population, and follow-up time. For example, the studies that included only hospitalized cases tended to show higher PASC prevalence than non-hospitalized or the mix of hospitalized and non-hospitalized patients (**Figure 2**). To better understand the interplay of these factors with PASC prevalence estimates, we performed additional stratified meta-analyses (**Table 2**).

First, the pooled PASC prevalence in hospitalized patients of 0.57 (95% CI: 0.45, 0.68) compared to the estimate in a mix of hospitalized and non-hospitalized COVID-19 patients of 0.31 (95% CI: 0.24, 0.40) revealed a sizeable difference, further distinguished by non-overlapping confidence intervals. However, we note that a wide range of estimates contributed to both groups (i.e., PASC prevalence varied from 0.25 – 0.81 in hospitalized studies versus 0.09 – 0.62 in the mixed group, and significant heterogeneity was present in both) (**eFigure 4B**).

Next, when focusing on sex, we estimated a pooled PASC prevalence in females of 0.49 (95% CI: 0.35, 0.63), which was higher than that in males of 0.37 (95% CI: 0.24, 0.51). Considering the same studies underly both strata, this imbalance was unlikely attributable to differences in the contributing studies (**eFigure 4A**).

Examining region-specific prevalences, pooled estimated prevalence of PASC was lower in the USA at 0.30 (95% CI: 0.21, 0.42) than in Europe at 0.43 (95% CI: 0.29, 0.58), while the highest estimated prevalence was in Asia at 0.49 (95% CI: 0.32, 0.66). Considerable within-region variation was observed among the included studies in that the corresponding ranges of prevalence of PASC were generally wide, with Europe exhibiting the largest range of 0.09 – 0.81. Overall, we did not identify any patterns with respect to particular countries that could explain the heterogeneity within each of the meta-analyzed regions ( $P < 0.001$ ; **eFigure 4C**).

Finally, we focused on estimating PASC prevalence stratified by follow-up time. With increasing follow-up time from 30 to 60 days after the index date, the estimated pooled prevalence of PASC decreased from 0.36 (95% CI: 0.25, 0.48) to 0.24 (95% CI: 0.13, 0.39). Pooled prevalence of PASC 90 and 120 days after the index date further increased to 0.29 (95% CI: 0.12, 0.57) and to 0.51 (95% CI: 0.42, 0.59), respectively (**eFigure 4D**). A possible reason for this comparatively high PASC prevalence at 120 days of follow-up time is that the bulk of the studies underlying this estimate concentrated on hospitalized populations (**eFigure 5**). Studies are also likely to experience higher drop-out rates as follow-up time increases, resulting in individuals no longer experiencing symptoms being underrepresented at the later time points. Some studies that measured PASC prevalence at multiple time points experienced a similar phenomenon.<sup>14</sup>

Significant levels of heterogeneity being present within each stratified meta-analysis corroborates that no single factor alone may account for the variation in PASC prevalence, but that rather a combination of factors should be considered. Concerning a perceived ordering of influence, the factors that seem to have the largest bearing on the PASC prevalence (as ordered from highest to lowest) were study population, region, and follow-up time. Furthermore, inconsistent PASC definition is a source of heterogeneity. As detailed in **eFigure 1**, studies measuring PASC as having at least one persistent symptom had lower heterogeneity (as measured by a chi-square test statistic) compared to those measuring PASC as at least one symptom (with symptoms not necessarily starting during the acute phase). Noting that the prevalence of each symptom varied, effect size of PASC prevalence estimates may differ in part due to the underlying symptoms assessed therein. An additional meta-analysis of studies with at least 120 days follow-up stratified by COVID-19 population resulted in similar observed heterogeneity (**eFigure 5**). Ultimately, these findings suggest that such variation may be indelible, as key considerations, such as the definition of PASC itself, as well as other clinical and methodological subcomponents, remain largely in flux.<sup>62</sup>

### **Prevalence of specific PASC symptoms**

Considering a unified definition of PASC remains under investigation (as discussed in the **Introduction** section), it was important to understand the prevalence of specific symptoms after COVID-19. In total, we assessed 23 symptoms reported across 30 studies (**Table 2, Figure 3**). The five most prevalent symptoms were the following, with corresponding estimated pooled symptom-specific prevalence: fatigue at 0.23 (95% CI: 0.13, 0.38), dyspnea at 0.13 (95% CI: 0.09, 0.19), insomnia at 0.13 (95% CI: 0.06, 0.28), joint pain at 0.13 (95% CI: 0.05, 0.29), and memory problems at 0.13 (95% CI: 0.10, 0.18). Forest plots for symptom-specific prevalence estimates are presented in **eFigure 6**. We note that a study by Orrù et al. from Italy tended to fall toward the higher end of the observed range for several symptom categories, and as such

this outlying study (relative to the other underlying studies) may have skewed the resulting point estimates and confidence intervals to a degree.<sup>43</sup>

### **PASC risk factors**

Although all included studies were screened for reported PASC risk factors, sex and pre-existing asthma were the only risk factors that were estimated in multiple studies and thus meta-analyzed. Female sex and pre-existing asthma had higher odds of having PASC with pooled estimated odds ratios (OR) of 1.57 (95% CI: 1.09, 2.26) and 2.15 (95% CI: 1.14, 4.05), respectively. Both meta-analyzed ORs were based on less than 5 studies and should thus be interpreted with caution. Among the studies that were not meta-analyzed, several found that individuals with more severe COVID-19 during the acute phase had higher risk of developing PASC.<sup>37,45,50,52</sup> Additionally, two studies found older age to be associated with PASC.<sup>20,58</sup> Other risk factors for PASC including number of symptoms during acute COVID-19,<sup>16</sup> fatigue<sup>18</sup>, dyspnea,<sup>18,39</sup> muscle pain,<sup>50</sup> headache,<sup>18,20</sup> myalgia,<sup>18</sup> and pre-existing conditions such as obesity,<sup>18,52</sup> comorbidity,<sup>45</sup> and hypothyroidism<sup>37</sup> were found positively associated with PASC (**eTable 4**).

### **Systematic review**

Six studies were not included in the meta-analysis since they did not report a composite binary endpoint as prevalence (**Figure 1**). Three studies used incidence rate or incidence density to measure PASC. Chevinsky et al. reported a 7% incidence rate of at least one of the five most common new conditions during days 31 to 120 for inpatients and a 7.7% incidence rate for at least one of 10 new conditions.<sup>57</sup> A UK study found breathlessness (85 and 536 events per 100,000 person-years in non-hospitalized and hospitalized patients) and joint pain (168 and 295 events per 100,000 person-years in non-hospitalized and hospitalized patients) to be the most common sequelae at 2 months.<sup>52</sup> Another UK study found the rates of respiratory disease and

major cardiovascular events to be 770.5 (95% CI: 757.8, 783.3) and 126 (95% CI: 121, 131) events per 1,000 person-years.<sup>12</sup> The other three studies investigated PASC with a focus on the psychiatric and neurological illness. Damiano et al. focused on psychiatric and cognitive sequela and reported a prevalence of 0.08 (95% CI: 0.06, 0.11), 0.14 (95% CI: 0.11, 0.18), and 0.16 (95% CI: 0.12, 19) for depression, generalized anxiety disorder, and mixed anxiety-depression.<sup>56</sup> Another study by Taquet et al. also concentrated on psychiatric disorder and measured incidence and hazard ratio of psychiatric disorder, dementia and insomnia with 90 days follow up.<sup>61</sup> The estimated probability of having new psychiatric illness 90 days after COVID-19 diagnosis was 5.8% (95% CI: 5.2, 6.4) Huang et al.'s study from China showed psychosocial problems (57.7%), worse depression (35%), and worse dyspnea (32.6%) to be among the most common complaints 4–6 months after discharge.<sup>29</sup>

Two articles described the duration of PASC and persistent symptoms. According to Sudre et al., the median duration of PASC with persisting symptoms was 41 days. For persisting symptoms that occurred at least 28 days after COVID-19 diagnosis, the median duration of persisting fatigue, headache, dyspnea, and myalgia was 33 days, 22 days, 24 days, and 7 days, respectively.<sup>18</sup> However, the median duration of persisting symptoms was longer in another India study.<sup>35</sup> A summary table of duration was reported in **eTable 5**.

## Discussion

We screened nearly 4.5 thousand articles and synthesized information from 40 large studies including almost one million individuals worldwide. The empirical findings suggest a global PASC prevalence of approximately 43%. Based on a WHO estimate of 237 million worldwide COVID-19 infections, this global pooled PASC estimate indicates that around 100 million individuals currently experience or have previously experienced long-term health-related



consequences of COVID-19. Individuals who were hospitalized during acute COVID-19 infection had higher PASC prevalence at 57%. Female adults had both higher prevalence and risk of having PASC than male adults (49% vs 37%). The prevalence of PASC in Asia, Europe, and USA are approximately 49%, 43%, and 30%, respectively. Next, we contextualize our results among findings from other PASC-related reviews.

Our global PASC estimate of 43% is considerably lower than the 80% figure provided by Lopez-Leon et al.<sup>63</sup> Their most prevalent sequela was fatigue at 58% which is concordant with fatigue being the most prevalent sequela at 23% in this study. In general, empirical symptom-specific prevalence estimates are lower in this study, although multiple estimates (e.g., for insomnia, memory problems, anxiety, depression) generally reconcile with the Lopez-Leon et al. review.<sup>13</sup> Similarly, when comparing to the Iqbal et al.<sup>64</sup> meta-analyzed PASC-related symptom prevalence findings, the estimates herein are lower. A potential reasoning for this is the sample size threshold that we employed may have led to select studies being excluded that were conducted in early 2020 with smaller samples and focused mainly on sicker patients.

Additional notable studies have been published after the date of this systematic search (August 12, 2021), and as such are not captured in the empirical estimates presented herein. As examples, another study by Taquet et al., using the TriNetX Analytics EHR network, estimated 36.55% of COVID-19 patients to have at least one PASC-related symptom 3-6 months after diagnosis.<sup>65</sup> Huang et al. 2021 also provided an update on their cohort from Jin Yin-tan Hospital in Wuhan.<sup>66</sup> Their 6-month study (which is included in this review) estimated 6-month PASC to be 76%. Their 12-month update found that, among patients who attended both the 6-month and 12-month follow-up, PASC prevalence decreased from 68% at 6 months to 49% at 12 months.

In addition to experiencing PASC symptoms, some COVID-19 survivors also go on to develop other complications. For the purposes of this review, we define COVID-19 complication as any secondary disease that manifests after the acute phase of a COVID-19 infection. Multisystem Inflammatory Syndrome in Children (MIS-C), Chronic Kidney Disease (CKD), myocarditis/pericarditis, Chronic Fatigue Syndrome (CFS) or myalgic encephalomyelitis, and Kawasaki disease are complications known to be associated with COVID-19.<sup>67</sup> While the focus of this review is on PASC symptoms rather than complications, further research is necessary to understand the relationship between COVID-19 and these complications and the needs of those living with complications.

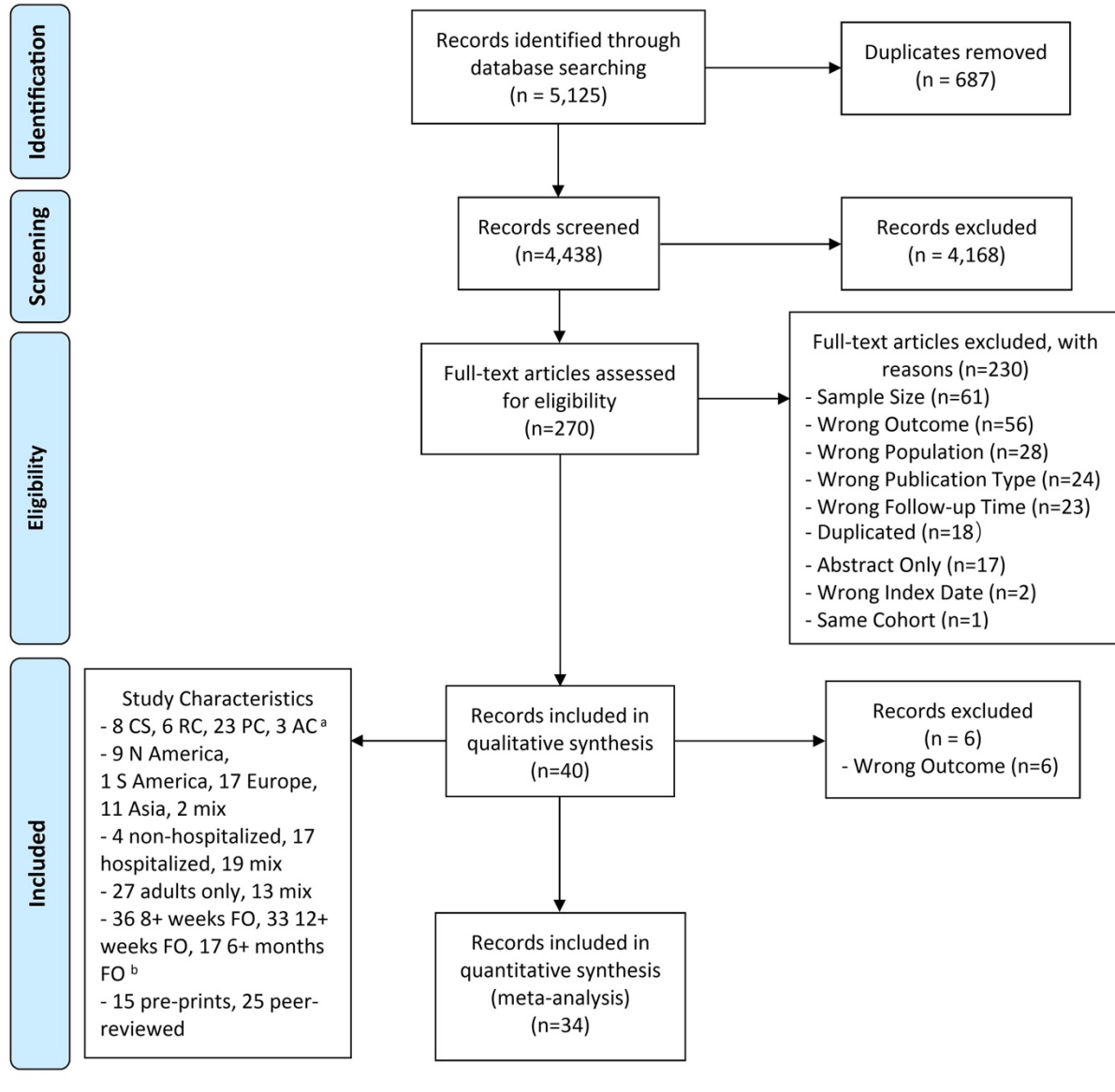
Our meta-analysis showed that female sex and pre-existing asthma correspond with higher proportions of PASC development. Outside of meta-analysis, we also found age, acute phase symptoms and severity, hypothyroidism, obesity, hypertension, and other pre-existing conditions to be risk factors for PASC. Protective factors for PASC may also exist, as a recent study suggested vaccines may offer protection.<sup>68</sup> However, a large hospital-based study suggests the opposite.<sup>69</sup> As such, the interplay between COVID-19 vaccines and PASC is at-large yet to be determined. Multiple other risk factors for PASC have been detected, and, although encompassed among select included studies, such factors were not meta-analyzed because they did not reach the threshold of at least 5 studies. Increased number of acute-phase symptoms is associated with PASC; however, one study reported 32% of individuals with PASC were asymptomatic during the acute phase in a non-hospitalized population.<sup>55</sup> Similarly, few studies examined the duration of PASC. Future research needs to further explore risk factors and duration for PASC, as these are generally critical components for clinicians in screening patients for increased risk of developing PASC, and in devising an appropriate treatment protocol accordingly. This leads to the several limitations of this systematic review and meta-analysis.

## Limitations

First, we did not survey grey literature (literature not published in academic journals), which could make our results reflect the positive publication bias known to exist in peer-reviewed medical literature, though we included preprints.<sup>70</sup> Second, we only considered studies written in English which may have excluded important studies written in other languages. Third, while our criteria for follow-up time and index date seem reasonable, there may be important results from studies using other criteria. For example, a large Danish cohort analyzed by Lund et al. was excluded for their choice of follow-up time.<sup>71</sup> Fourth, bias in testing for COVID-19, especially in the early stages of the pandemic, might have affected the characteristics of the COVID-19 positive cohort.<sup>72</sup> In other words, patients without access to testing, patients without strong health-seeking behavior, and asymptomatic individuals are not blanketly reflected in the empirical findings. Additionally, included studies conducted in early 2020 may tend to be older and higher risk individuals, as testing among these groups was prioritized at that time. Fifth, our sample size criteria may have curtailed inclusion of early-pandemic studies, as sample sizes were generally smaller at that time, and thus favored studies examining acute-phase manifestations over studies focusing on PASC. Lastly, while our review included studies across 17+ countries, data from multiple regions are largely absent (notably Africa and Australia). Existing inequities in healthcare access may hamper underserved populations being adequately reflected herein. Moreover, we emphasize that stratifying PASC by race-ethnicity is a noteworthy gap in the literature. With respect to the age composition of the included articles, few children were included in the underlying sample. Future investigators may seek to further examine differences in PASC prevalence among such demographic subgroups.

## Conclusions

Findings from this study provide insight into the empirical estimates of prevalence, symptoms, risk factors, and duration of PASC, with an examination of differences by several factors including geography. We recommend continued attention be focused on identifying patients at-risk of developing PASC and on quantifying duration of PASC to aid in the clinical advancements globally for alleviating the long-lasting health effects of COVID-19.



<sup>a</sup> CS = cross-sectional, RC = retrospective cohort, PC = prospective cohort, AC = ambidirectional cohort

<sup>b</sup> FO = follow-up

**Figure 1.** PRISMA flow diagram.

*Note:* Additional study characteristics of all included studies are listed in the box in the bottom left.

**Table 1. Summary of Included Studies.**

Region	Date of Publication	Authors	Study Design <sup>a</sup>	Population of Interest <sup>b,e</sup>	Setting	Country	Sample Size	Follow-up Time <sup>f</sup>	Age	Sex (% female)	Outcomes of Interest <sup>e</sup>
Asia	Dec 2020	Huang et al <sup>29</sup>	AC	COVID-19+, hospitalized adults	Leishenshan Hospital (Wuhan)	China	464	4-6 months <sup>***</sup>	57 (15-93) <sup>c</sup>	48.50%	Symptom prevalence, risk factors
	Jan 2021	Huang et al <sup>17</sup>	AC	COVID-19+ adults	Jin Yin-tan Hospital (Wuhan)	China	1733	186 (175-199) days <sup>c</sup> <sup>****</sup>	57 (47-65) <sup>c</sup>	48%	PASC and symptom prevalence
	Jan 2021	Xiong et al <sup>30</sup>	PC	COVID-19+, hospitalized adults	Renmin Hospital of Wuhan University	China	538	97 (95-102) days <sup>c</sup> <sup>***</sup>	52 (41-62) <sup>c</sup>	54.50%	PASC and symptom prevalence
	Jan 2021	Zheng et al <sup>31</sup>	CS	COVID-19+, hospitalized adults	Multicenter (hospitals in Wuhan)	China	574	241.79 (16.16) days <sup>d</sup> <sup>****</sup>	57.7 (11.4) <sup>d</sup>	60.60%	Symptom prevalence
	Apr 2021	Shang et al <sup>32</sup>	PC	COVID-19+, severe, hospitalized	Multicenter (3 hospitals in Wuhan)	China	796	6 months <sup>***</sup>	62 (51-69) <sup>c</sup>	49.20%	PASC and symptom prevalence, risk factors
	June 2021	Areekal et al <sup>33</sup>	CS	COVID-19+, hospitalized, symptomatic adults	Government Medical College, Thrissur (Kerala)	India	335	28 days <sup>*</sup>	50.7 (15.7) <sup>d</sup>	48.10%	PASC and symptom prevalence, risk factors
	June 2021	Budhiraja et al <sup>34</sup>	PC	COVID-19+, hospitalized	Multicenter (3 Hospitals in North India)	India	990	9 (4-12) months <sup>d</sup> <sup>****</sup>	14.6% <=29 59.7% 30-59 25.7% 60+	67.70%	PASC and symptom prevalence
	July 2021	Naik et al <sup>35</sup>	PC	COVID-19+ adults	Tertiary Care Facility in New Delhi	India	1,234	91 (45-185) days <sup>c</sup> <sup>***</sup>	41.4 (14.2) <sup>d</sup>	30.60%	PASC and symptom prevalence, risk factors, duration
	Mar 2021	Mannan et al <sup>36</sup>	CS	COVID-19+, hospitalized	Multicenter (6 hospitals)	Bangladesh	1,021	4+ Weeks <sup>*</sup>	1.8% 0-9 4.9% 10-19 24.4% 20-29 30.4% 30-39 16.8% 40-49 12.4% 50-59 9.4% 60+	25%	Symptom prevalence
	Nov 2020	Sami et al <sup>37</sup>	PC	COVID-19+, hospitalized adults	Khorshid Hospital (Isfahan)	Iran	452	4 weeks <sup>*</sup>	n/a	n/a	Symptom prevalence
	Aug 2021	Munblit et al <sup>38</sup>	PC	COVID-19+, hospitalized adults	Multicenter (Sechenov University Hospital Network, Moscow)	Russia	2,649	218 (200-236) days <sup>c</sup> <sup>****</sup>	56 (46-66) <sup>c</sup>	51.10%	PASC and symptom prevalence, risk factors
Europe	Jan 2021	Venturelli et al <sup>16</sup>	PC	COVID-19+ adults	Papa Giovanni XXIII Hospital (Bergamo)	Italy	767	105 (84-127) days <sup>c</sup> <sup>***</sup>	63 (13.6) <sup>d</sup>	32.90%	PASC and symptom prevalence
	Feb 2021	Soraas et al <sup>39</sup>	PC	COVID-19+, non-hospitalized adults	Online Survey	Norway	588	248 (18) days <sup>d</sup> <sup>****</sup>	48 <sup>d</sup>	57%	PASC and symptom prevalence
	Mar 2021	Morin et al <sup>40</sup>	PC	COVID-19+, hospitalized adults	Bicêtre Hospital (Paris)	France	478	113 (94-128) days <sup>c</sup> <sup>***</sup>	61 (16) <sup>d</sup>	42.10%	PASC and symptom prevalence
	Mar 2021	Lampl et al <sup>41</sup>	RC	COVID-19+	Regensburg Public Health Department, Regensburg, Bavaria	Germany	419	6+ weeks <sup>*</sup>	44 (30-57) <sup>c</sup>	56.60%	PASC and symptom prevalence

Region	Date of Publication	Authors	Study Design <sup>a</sup>	Population of Interest <sup>b,e</sup>	Setting	Country	Sample Size	Follow-up Time <sup>f</sup>	Age	Sex (% female)	Outcomes of Interest <sup>e</sup>
	Mar 2021	Ayoubkhani et al <sup>12</sup>	RC	COVID-19+, hospitalized	NHS hospitals in England	UK	47,780	140 (50) days <sup>d ***</sup>	64.5 (19.2) <sup>d</sup>	45%	Symptom prevalence
	Apr 2021	Lemhofer et al <sup>42</sup>	CS	COVID-19+ adults with mild to moderate infection	Survey Administered by 2 Bavarian health departments	Germany	365	3 months+ <sup>***</sup>	49.8 (16.9) <sup>d</sup>	58.50%	PASC and symptom prevalence
	May 2021	Orrù et al <sup>43</sup>	CS	COVID-19+ adults plus COVID-19- controls	Online Survey (recruitment via social media or email)	Italy	507	1-3 months <sup>**</sup>	0.2% <20 12.23% 20-29 20.91% 30-39 30.77% 40-49 26.04% 50-59 8.24% 60-69 1.58% >70	82.05%	Symptom prevalence
	May 2021	Desgranges et al <sup>44</sup>	PC	COVID-19+, symptomatic, outpatient adults with at least one risk factor for severe COVID-19	University hospital of Lausanne	Switzerland	418	105 (121-204) days <sup>c ***</sup>	41 (31-54) <sup>c</sup>	62%	PASC and symptom prevalence, risk factors
	June 2021	Peghin et al <sup>45</sup>	AC	COVID-19+ adults	Udine Hospital	Italy	599	191 (172-204) days <sup>c ****</sup>	53(15.8) <sup>d</sup>	53.40%	PASC and symptom prevalence
	June 2021	Righi et al <sup>46</sup>	PC	COVID-19+ adults	Verona University Hospital	Italy	448	6 weeks, 12 weeks <sup>**</sup>	56 (45-66) <sup>c</sup>	45.10%	PASC and symptom prevalence
	June 2021	Maestre-Muñiz et al <sup>47</sup>	CS	COVID-19+ adults	Tomelloso General Hospital	Spain	543	12 months <sup>****</sup>	n/a	n/a	PASC and symptom prevalence
	July 2021	Ghosn et al <sup>48</sup>	PC	COVID-19+, hospitalized	Multicenter (French Covid Cohort)	France	1,137	3 months, 6 months <sup>***</sup>	61 (51-71) <sup>c</sup>	37%	Symptom prevalence
	July 2021	Augustin et al <sup>14</sup>	PC	COVID-19+, non-hospitalized adults	University Hospital Cologne	Germany	1.4 months: 958 4.3 months: 442 6.8 months: 353	1.4 (1-2) months, 4.3 (3-5) months, 6.8 (6-8) months <sup>c ****</sup>	43 (31-54) <sup>c</sup>	53.50%	PASC and symptom prevalence, risk factors
	July 2021	Menges et al <sup>49</sup>	PC	COVID-19+ adults	Department of Health of the Canton of Zurich, Switzerland Surveillance	Switzerland	431	7.2 (5.9-10.3) months <sup>c ****</sup>	47 (33-58) <sup>c</sup>	50%	PASC and symptom prevalence, risk factors
	July 2021	Taylor et al <sup>50</sup>	PC	COVID-19+, hospitalized	Barts Health NHS Trust (London)	UK	675	12+ weeks <sup>***</sup>	n/a	42.10%	Symptom prevalence
	Aug 2021	Fernández-de-Las-Peñas et al <sup>51</sup>	PC	COVID-19+, hospitalized	Multicenter	Spain	1,142	7 (0.6) months <sup>d ****</sup>	61 (17) <sup>d</sup>	48%	PASC and symptom prevalence

Region	Date of Publication	Authors	Study Design <sup>a</sup>	Population of Interest <sup>b,e</sup>	Setting	Country	Sample Size	Follow-up Time <sup>f</sup>	Age	Sex (% female)	Outcomes of Interest <sup>e</sup>
	Apr 2021	Whittaker et al <sup>52</sup>	PC	COVID-19+ adults	Clinical Practice Research Database (CPRD) Aurum	UK	46,687	63 days (63-63) <sup>c **</sup>	38.6% 18-30 16.6% 31-40 15.7% 41-50 16% 51-60 7.4% 61-70 3.3% 71-80 2.4% >80	54.60%	Symptom prevalence
Americas	Dec 2020	Cirulli et al <sup>53</sup>	PC	COVID-19+ adults	Surveyed participants from Helix DNA Discovery Project and Healthy Nevada Project	USA	357	30, 60, 90 days <sup>***</sup>	n/a	n/a	PASC and symptom prevalence, risk factors
	Mar 2021	Hirschtick et al <sup>54</sup>	CS	COVID-19+, symptomatic adults	Michigan Disease Surveillance System	USA	593	30, 60 days <sup>**</sup>	51.5 (15.8) <sup>d</sup>	56.10%	PASC prevalence
	Mar 2021	Spotnitz et al <sup>15</sup>	RC	COVID-19+	ICM MarketScan Commercial Claims and Encounters, Optum Electronic Health Record, and Columbia University Irving Medical Center.	USA	448,176	30-180 days <sup>***</sup>	n/a	n/a	PASC and symptom prevalence
	Mar 2021	Perlis et al <sup>20</sup>	CS	COVID-19+, symptomatic	Online Survey with Non-Probability Sampling	USA	6,211	10 months <sup>****</sup>	37.8 (12.2) <sup>d</sup>	45.10%	PASC and symptom prevalence, risk factors
	Mar 2021	Huang et al <sup>55</sup>	RC	COVID-19+, non-hospitalized with 5+ year history in EHR system	UC CORDS (University of California Covid research data set)	USA	1,407	61+ days <sup>**</sup>	2% < 18 10% 18-29 16% 30-39 18% 40-49 21% 50-59 16% 60-69 12% 70-79 6% >= 80	58.90%	Symptom prevalence, risk factors
	Apr 2021	Damiano et al <sup>56</sup>	PC	COVID-19+, hospitalized (moderate or severe Covid) adults	Hospital das Clínicas da Faculdade de Medicina da Universidade de São Paulo	Brazil	425	207 (20.4) days <sup>d ****</sup>	55.7 (14.2) <sup>d</sup>	51.53%	Psychiatric and cognitive symptom prevalence



Region	Date of Publication	Authors	Study Design <sup>a</sup>	Population of Interest <sup>b,e</sup>	Setting	Country	Sample Size	Follow-up Time <sup>f</sup>	Age	Sex (% female)	Outcomes of Interest <sup>e</sup>
	Apr 2021	Chevinsky et al <sup>57</sup>	PC	COVID-19+ adult inpatients and outpatients	Premier Healthcare Database Sepical COVID-19 Release (PHD-SR)	USA	Outpatients: 44,489 Inpatients: 27,284	31-60 days, 61-90 days, 91-120 days ***	Inpatients: 8.8% 18-39 10% 40-49 28.1% 50-64 22.1% 65-74 18% 75-84 13% >= 85  Outpatients: 35.7% 19-39 18.1% 40-49 25.9% 50-64 10.3% 65-74 6% 75-84 4% >= 85	52.5% (inpatients) 61.2% (outpatients)	PASC and symptom prevalence
	May 2021	Yomogida et al <sup>58</sup>	PC	COVID-19+ adults	Long Beach Department of Health and Human Services Surveillance	USA	366	1 Month, 2 months, 10 weeks-5 months ***	11.4% 18-24 39.3% 25-39 30.2% 40-54 10.6% 55-64 8.2% 65+	56.40%	PASC and symptom prevalence, risk factors
	June 2021	Wong-Chew et al <sup>59</sup>	PC	COVID-19+, hospitalized adults	Temporary Covid-19 Hospiital in Mexico City	Mexico	30 days: 1,303 90 days: 928	30, 90 days ***	n/a	n/a	Symptom prevalence, risk factors
	June 2021	Shoucri et al <sup>60</sup>	RC	COVID-19+, hospitalized adults	New York-Presbyterian/Columbia University Irving Medical Center	USA	3 months: 488 6 months: 364	3, 6 months ***	3 months: 60 (47.8-71) 6 months: 61 (50.0-71) <sup>c</sup>	43.2% - 3 months 47.8% - 6 months	Symptom prevalence
<i>Mix</i>	Mar 2021	Sudre et al <sup>18</sup>	PC	COVID-19+, symptomatic	COVID Symptom Study App	UK, Sweden, US	4,182	28-84 days **	42 (32-53) <sup>c</sup>	71.50%	PASC and symptom prevalence, risk factors, duration
	May 2021	Taquet et al <sup>61</sup>	RC	COVID-19+, age 10+	TriNetX EHR Network	USA, others	236,379	6 months ***	46 (19.7) <sup>d</sup>	55.60%	Risk factors, duration

<sup>a</sup> PS = Prospective Cohort, RS = Retrospective Cohort, CS = Cross-sectional, AC = Ambidirectional Cohort

<sup>b</sup> Not all inclusion/exclusion criteria listed

<sup>c</sup> Median (IQR) or Median (range)

<sup>d</sup> Mean (SD) or Mean (95% CI)

<sup>e</sup> Some studies included populations and outcomes outside the scope of this review.

<sup>f</sup> Asterisks denote length of follow-up time according to the following convention: [4 weeks, 8 weeks] - \*, (8 weeks, 12 weeks] - \*\*, (12 weeks, 6 months] - \*\*\* 6+ months - \*\*\*\*. If a study considered measurements at several follow-up times, the longest duration was used.

**Table 2.** Meta-analysis of pooled PASC prevalence with 95% CI in COVID-19 Positive Individuals <sup>a</sup>

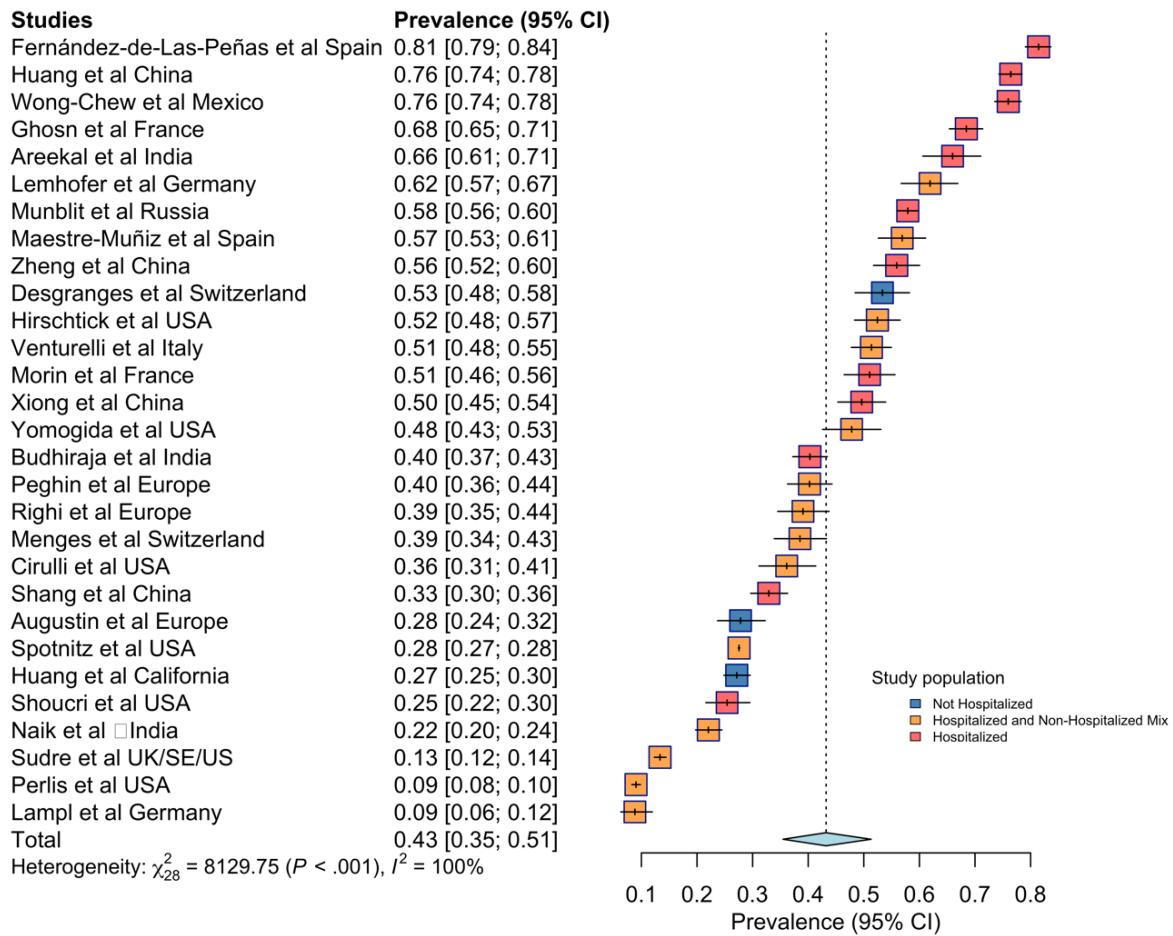
		<b>PASC Prevalence in COVID-19 Positive Individuals [95% CI]; (number of included studies)</b>		
		<b>Any*</b>	<b>Mix of Hospitalized &amp; Non-Hospitalized</b>	<b>Hospitalized</b>
<b>Overall</b>		0.43 [0.35; 0.51]; (29)	0.33 [0.26; 0.42]; (14)	0.57 [0.47; 0.66]; (12)
<b>Sex</b>	Female	0.49 [0.35; 0.63]; (9)	...	...
	Male	0.37 [0.24; 0.51]; (9)	...	...
<b>Region</b>	Europe	0.43 [0.29; 0.58]; (13)	...	...
	Asia	0.49 [0.32; 0.66]; (7)	...	...
	USA	0.30 [0.21; 0.42]; (7)	...	...
<b>Follow-up time</b>	30 days	0.36 [0.25; 0.48]; (10)	...	...
	60 days	0.24 [0.13; 0.39]; (9)	...	...
	90 days	0.32 [0.14; 0.57]; (9)	...	...
	120 days	0.51 [0.41; 0.61]; (12)	0.45 [0.34; 0.57]; (3) <sup>b</sup>	0.56 [0.44; 0.68]; (8)
<b>General symptoms</b>	Fatigue	0.23 [0.13; 0.38]; (22)	0.22 [0.09; 0.44]; (11)	0.26 [0.17; 0.38]; (8)
	Tachycardia	0.07 [0.03; 0.18]; (6)	...	...
	Appetite/ Eating disorder	0.06 [0.03; 0.1]; (8)	...	0.04 [0.02; 0.08]; (6)
	Dizziness	0.06 [0.03; 0.13]; (5)	...	...
	Sore throat	0.03 [0.02; 0.05]; (10)	...	0.03 [0.01; 0.09]; (5)
	Fever	0.02 [0.01; 0.04]; (12)	0.02 [0.01; 0.04]; (6)	...
<b>Neurologic symptoms</b>	Sleep problems	0.13 [0.06; 0.28]; (14)	...	0.16 [0.11; 0.23]; (9)
	Memory problems	0.13 [0.1; 0.18]; (10)	...	0.12 [0.09; 0.17]; (7)
	Concentration/ Confusion / Brain fog	0.09 [0.05; 0.17]; (11)	...	0.06 [0.03; 0.13]; (6)
	Smell	0.08 [0.05; 0.12]; (13)	0.14 [0.06; 0.28]; (5)	0.05 [0.03; 0.08]; (7)
	Taste	0.08 [0.04; 0.13]; (10)	...	0.04 [0.02; 0.07]; (5)
	Headache	0.05 [0.03; 0.08]; (17)	0.03 [0.01; 0.1]; (8)	0.05 [0.02; 0.11]; (7)
	Smell or Taste	0.05 [0.01; 0.21]; (9)	0.04 [0.01; 0.23]; (5)	...
<b>Respiratory symptoms</b>	Dyspnea	0.13 [0.09; 0.19]; (24)	0.12 [0.07; 0.2]; (13)	0.16 [0.13; 0.21]; (8)
	Cough	0.07 [0.05; 0.09]; (24)	0.06 [0.04; 0.09]; (11)	0.07 [0.05; 0.12]; (10)
	Chest pain	0.05 [0.04; 0.07]; (15)	0.03 [0.02; 0.07]; (6)	0.07 [0.05; 0.1]; (9)
<b>Psychological symptoms</b>	Anxiety	0.10 [0.06; 0.16]; (10)	0.12 [0.05; 0.25]; (6)	...
	Depression	0.10 [0.05; 0.21]; (7)	0.13 [0.04; 0.34]; (5)	...
<b>Musculoskeletal symptoms</b>	Joint pain	0.13 [0.05; 0.29]; (5)	...	...
	Myalgia	0.06 [0.03; 0.13]; (17)	0.06 [0.02; 0.16]; (10)	0.07 [0.04; 0.12]; (7)
<b>Gastrointestinal symptoms</b>	Abdominal pain	0.04 [0.02; 0.12]; (6)	...	...
	Diarrhea	0.03 [0.01; 0.07]; (9)	...	0.02 [0.01; 0.04]; (5)
<b>Dermatologic symptoms</b>	Hair loss	0.07 [0.02; 0.24]; (10)	...	0.13 [0.08; 0.21]; (6)

\* Includes studies that reported on only non-hospitalized, mix of hospitalized & non-hospitalized, or only hospitalized COVID-19 positive patients

<sup>a</sup> Pooled estimates and 95% CIs calculated from random-effect models with inverse variance weighting as described in methods. Prevalence is stratified by acute-phase hospitalization status. Estimates for the non-hospitalized population are not provided due to lack of sample size.

<sup>b</sup> Only 3 studies with mixed hospitalized and non-hospitalized population. This estimate should be interpreted with caution due to low sample size.

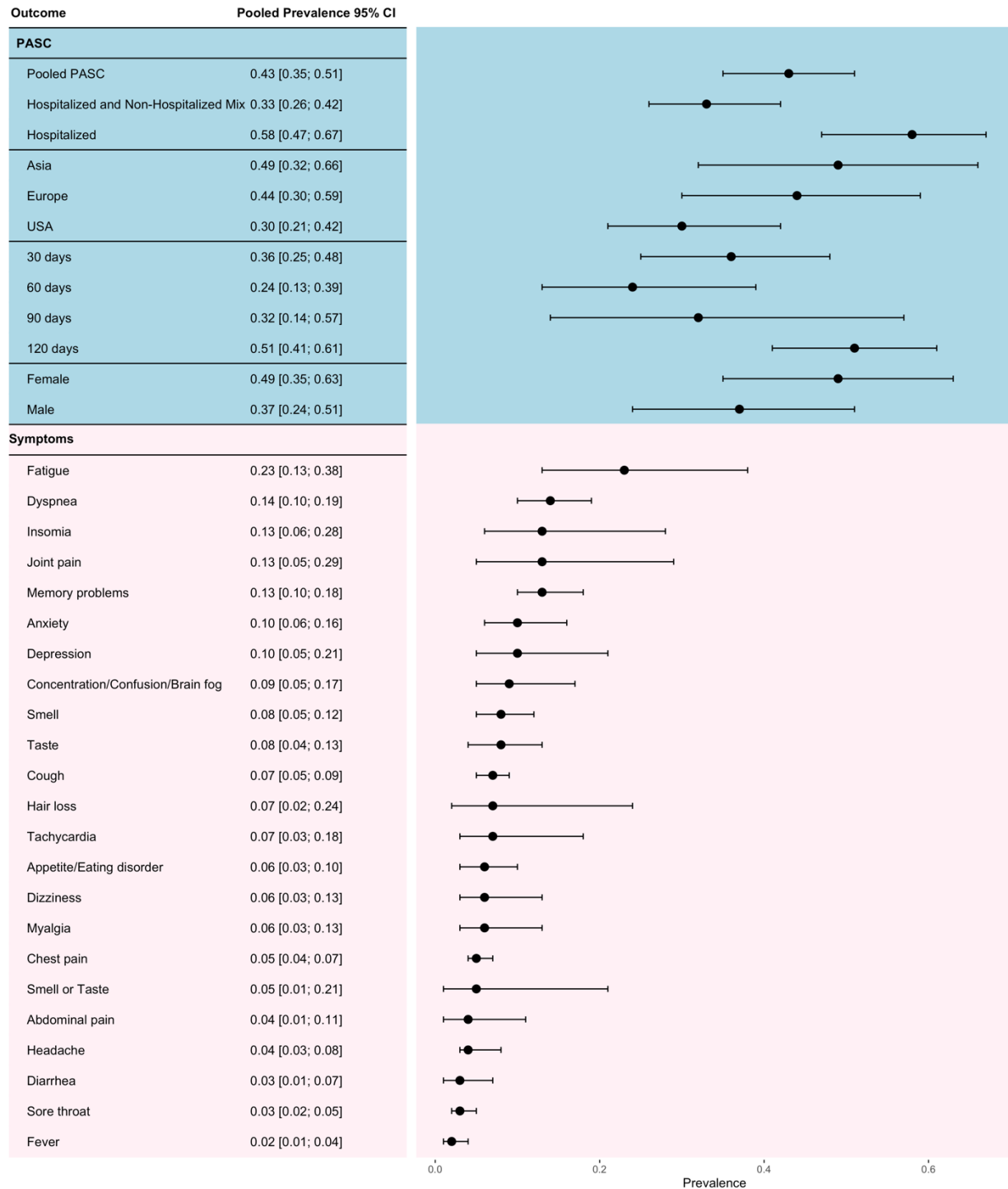
It is made available under a [CC-BY 4.0 International license](https://creativecommons.org/licenses/by/4.0/).



**Figure 2.** Forest plot for worldwide PASC prevalence.

*Notes:* Prevalence estimates and 95% CIs are provided for each study with a relevant measure, and for the meta-analysis of all such studies. For individual studies, the horizontal line represents the estimate, whiskers represent the confidence interval, the size of the box represents the weight assigned to the study, and the color shading reflects the hospitalization status of the study population, as noted in the legend. For the pooled estimate, the width of the diamond represents the confidence interval. Meta-analyzed prevalence and 95% CIs are calculated using random-effects models with inverse variance weighting as described in the methods. Measures of heterogeneity of prevalence estimates are provided.

It is made available under a [CC-BY 4.0 International license](https://creativecommons.org/licenses/by/4.0/).



**Figure 3.** Forest plot for PASC prevalence by hospitalization status, region, follow-up time, and sex, as well as symptom-specific prevalence.

*Notes:* Pooled estimates and 95% CIs calculated from random-effect models with inverse variance weighting as described in methods. Pooled estimates with confidence intervals are provided on the left, and visualization of the intervals on the right.

## References

1. CDC. Coronavirus Disease 2019 (COVID-19) – Symptoms. Centers for Disease Control and Prevention. Published February 22, 2021. Accessed October 20, 2021. <https://www.cdc.gov/coronavirus/2019-ncov/symptoms-testing/symptoms.html>
2. Ramos-Casals M, Brito-Zerón P, Mariette X. Systemic and organ-specific immune-related manifestations of COVID-19. *Nat Rev Rheumatol*. 2021;17(6):315-332. doi:10.1038/s41584-021-00608-z
3. WHO Coronavirus (COVID-19) Dashboard. Accessed October 20, 2021. <https://covid19.who.int>
4. CDC. Healthcare Workers. Centers for Disease Control and Prevention. Published February 11, 2020. Accessed October 20, 2021. <https://www.cdc.gov/coronavirus/2019-ncov/hcp/clinical-care/post-covid-conditions.html>
5. [planning-scenarios-2020-05-20.pdf](https://www.cdc.gov/coronavirus/2019-ncov/hcp/planning-scenarios-archive/planning-scenarios-2020-05-20.pdf). Accessed November 8, 2021. <https://www.cdc.gov/coronavirus/2019-ncov/hcp/planning-scenarios-archive/planning-scenarios-2020-05-20.pdf>
6. McElfish PA, Purvis R, James LP, Willis DE, Andersen JA. Perceived Barriers to COVID-19 Testing. *Int J Environ Res Public Health*. 2021;18(5):2278. doi:10.3390/ijerph18052278
7. Lieberman-Cribbin W, Tuminello S, Flores RM, Taioli E. Disparities in COVID-19 Testing and Positivity in New York City. *Am J Prev Med*. 2020;59(3):326-332. doi:10.1016/j.amepre.2020.06.005
8. SARS-CoV-2 infection fatality rates in India: systematic review, meta-analysis and model-based estimation | medRxiv. Accessed November 8, 2021. <https://www.medrxiv.org/content/10.1101/2021.09.08.21263296v1>
9. Rahmandad H, Lim TY, Sterman J. *Behavioral Dynamics of COVID-19: Estimating Under-Reporting, Multiple Waves, and Adherence Fatigue Across 92 Nations*. Social Science Research Network; 2021. doi:10.2139/ssrn.3635047
10. Asymptomatic SARS-CoV-2 infection: A systematic review and meta-analysis | PNAS. Accessed November 8, 2021. <https://www.pnas.org/content/118/34/e2109229118>
11. Carfi A, Bernabei R, Landi F, for the Gemelli Against COVID-19 Post-Acute Care Study Group. Persistent Symptoms in Patients After Acute COVID-19. *JAMA*. 2020;324(6):603-605. doi:10.1001/jama.2020.12603
12. Ayoubkhani D, Khunti K, Nafilyan V, et al. Post-covid syndrome in individuals admitted to hospital with covid-19: retrospective cohort study. *BMJ*. 2021;372:n693-n693.
13. López-León S, Wegman-Ostrosky T, Perelman C, et al. *More than 50 Long-Term Effects of COVID-19: A Systematic Review and Meta-Analysis*. Social Science Research Network; 2021. doi:10.2139/ssrn.3769978

14. Augustin M, Schommers P, Stecher M, et al. Post-COVID syndrome in non-hospitalised patients with COVID-19: a longitudinal prospective cohort study. *Lancet Reg Health Eur*. 2021;6:100122-100122.
15. Spotnitz ME, Hripcsak G, Ryan PB, Natarajan K. Characterizing Post-Acute Sequelae of SARS-CoV-2 Infection across Claims and Electronic Health Record Databases. Published online March 2021.
16. Venturelli S, Benatti SV, Casati M, et al. Surviving COVID-19 in Bergamo province: a post-acute outpatient re-evaluation. *Epidemiol Infect*. 2021;149:e32-e32.
17. Huang C, Huang L, Wang Y, et al. 6-month consequences of COVID-19 in patients discharged from hospital: a cohort study. *Lancet Lond Engl*. 2021;397(10270):220-232.
18. Sudre CH, Murray B, Varsavsky T, et al. Attributes and predictors of long COVID. *Nat Med*. 2021;27(4):626-631.
19. Nasserie T, Hittle M, Goodman SN. Assessment of the Frequency and Variety of Persistent Symptoms Among Patients With COVID-19: A Systematic Review. *JAMA Netw Open*. 2021;4(5):e2111417. doi:10.1001/jamanetworkopen.2021.11417
20. Perlis RH, Green J, Santillana M, et al. Persistence of symptoms up to 10 months following acute COVID-19 illness. *MedRxiv Prepr Serv Health Sci*. Published online March 2021.
21. BERGER Z, ALTIERY DE JESUS V, ASSOUMOU SA, GREENHALGH T. Long COVID and Health Inequities: The Role of Primary Care. *Milbank Q*. 2021;99(2):519-541. doi:10.1111/1468-0009.12505
22. Page MJ, McKenzie JE, Bossuyt PM, et al. The PRISMA 2020 statement: an updated guideline for reporting systematic reviews. *Syst Rev*. 2021;10(1):89. doi:10.1186/s13643-021-01626-4
23. Library Resources. Accessed October 20, 2021. <https://covid.yale.edu/research/resources/library-resources/>
24. Ouzzani M, Hammady H, Fedorowicz Z, Elmagarmid A. Rayyan—a web and mobile app for systematic reviews. *Syst Rev*. 2016;5(1). doi:10.1186/s13643-016-0384-4
25. Schwarzer G. *Meta: General Package for Meta-Analysis.*; 2021. Accessed October 20, 2021. <https://CRAN.R-project.org/package=meta>
26. Wang N. *How to Conduct a Meta-Analysis of Proportions in R: A Comprehensive Tutorial.*; 2018. doi:10.13140/RG.2.2.27199.00161
27. Viechtbauer W. *Metafor: Meta-Analysis Package for R.*; 2021. Accessed October 20, 2021. <https://CRAN.R-project.org/package=metafor>
28. Martin J. © Joanna Briggs Institute 2017 Critical  
Appraisal Checklist for Prevalence Studies. Published online 2017:7.

29. Huang D, Chen C, Xuan W, et al. Long-Term Outcomes and Sequelae for 464 COVID-19 Patients Discharged from Leishenshan Hospital in Wuhan, China. Published online December 2020.
30. Xiong Q, Xu M, Li J, et al. Clinical sequelae of COVID-19 survivors in Wuhan, China: a single-centre longitudinal study. *Clin Microbiol Infect Off Publ Eur Soc Clin Microbiol Infect Dis*. 2021;27(1):89-95.
31. Zheng D, Zhang L, Feng B, et al. Long-Term Clinical Sequelae and Immunological Features of COVID-19 Survivors: A Cross-Sectional Study in Wuhan, China. Published online January 2021.
32. Shang YF, Liu T, Yu JN, et al. Half-year follow-up of patients recovering from severe COVID-19: Analysis of symptoms and their risk factors. *J Intern Med*. Published online April 2021.
33. Areekal B, Sukumaran ST, Andrews AM, et al. Persistence of symptoms after acute COVID-19 infection- An experience from a tertiary care centre in South India. *J Clin Diagn Res*. 2021;15(6):LC05-LC08.
34. Budhiraja S, Aggarwal M, Wig R, et al. Long Term Health Consequences of COVID-19 in Hospitalized Patients from North India: A follow up study of upto 12 months. Published online June 2021.
35. Naik S, Soneja M, Haldar S, et al. Post COVID-19 sequelae: A prospective observational study from Northern India. Published online July 2021.
36. Mannan A, M Hamidullah Mehedi H, Chy NUHA, et al. A multi-centric, cross-sectional study on COVID-19 in Bangladesh: Clinical epidemiology and short-term outcomes in recovered individuals. Published online October 2020.
37. Sami R, Soltaninejad F, Amra B, et al. A one-year hospital-based prospective COVID-19 open-cohort in the Eastern Mediterranean region: The Khorshid COVID Cohort (KCC) study. *PLoS One*. 2020;15(11):e0241537-e0241537.
38. Munblit D, Bobkova P, Spiridonova E, et al. Incidence and risk factors for persistent symptoms in adults previously hospitalized for COVID-19. *Clin Exp Allergy*. 2021;51(9):1107-1120. doi:10.1111/cea.13997
39. Soraas A, Bo R, Kalleberg KT, Ellingjord Dale M, Landro NI. Self-reported Memory Problems Eight Months after Non-Hospitalized COVID-19 in a Large Cohort. Published online February 2021.
40. Morin L, Savale L, Pham T, et al. Four-Month Clinical Status of a Cohort of Patients After Hospitalization for COVID-19. *JAMA*. 2021;325(15):1525-1534.
41. Lampl BMJ, Buczovsky M, Martin G, Schmied H, Leitzmann M, Salzberger B. Clinical and epidemiological data of COVID-19 from Regensburg, Germany: a retrospective analysis of 1084 consecutive cases. *Infection*. Published online March 2021:1-9.

42. Lemhofer C, Sturm C, Loudovici Krug D, Best N, Gutenbrunner C. The Impact of Long-COVID on Functioning – Results from a Community Survey in Patients After Mild and Moderate SARS-CoV-2-Infection in Germany. Published online April 2021.
43. Orrù G, Bertelloni D, Diolaiuti F, et al. Long-COVID Syndrome? A Study on the Persistence of Neurological, Psychological and Physiological Symptoms. *Healthc Basel Switz.* 2021;9(5).
44. Desgranges F, Tadini E, Munting A, et al. Post-COVID-19 syndrome in outpatients: a cohort study. Published online April 2021.
45. Peghin M, Palese A, Venturini M, et al. Post-COVID-19 symptoms 6 months after acute infection among hospitalized and non-hospitalized patients. *Clin Microbiol Infect Off Publ Eur Soc Clin Microbiol Infect Dis.* Published online June 2021.
46. Righi E, Mirandola M, Mazzaferri F, et al. Long-Term Patient-Centred Follow-up in a Prospective Cohort of Patients with COVID-19. *Infect Dis Ther.* Published online June 2021:1-12.
47. Maestre-Muñiz MM, Arias Á, Mata-Vázquez E, et al. Long-Term Outcomes of Patients with Coronavirus Disease 2019 at One Year after Hospital Discharge. *J Clin Med.* 2021;10(13).
48. Ghosn J, Piroth L, Epaulard O, et al. Persistent COVID-19 symptoms are highly prevalent 6 months after hospitalization: results from a large prospective cohort. *Clin Microbiol Infect Off Publ Eur Soc Clin Microbiol Infect Dis.* Published online April 2021.
49. Menges D, Ballouz T, Anagnostopoulos A, et al. Burden of Post-COVID-19 Syndrome and Implications for Healthcare Service Planning: A Population-based Cohort Study. Published online March 2021.
50. Taylor RR, Trivedi B, Patel N, et al. Post-COVID symptoms reported at asynchronous virtual review and stratified follow-up after COVID-19 pneumonia. *Clin Med Lond Engl.* Published online June 2021.
51. Fernández-de-Las-Peñas C, Palacios-Ceña D, Gómez-Mayordomo V, et al. Long-term post-COVID symptoms and associated risk factors in previously hospitalized patients: A multicenter study. *J Infect.* Published online May 2021.
52. Whittaker HR, Gulea C, Koteci A, et al. Post-Acute COVID-19 Sequelae in Cases Managed in the Community or Hospital in the UK: A Population Based Study. Published online April 2021.
53. Cirulli ET, Barrett KMS, Riffle S, et al. Long-term COVID-19 symptoms in a large unselected population. Published online October 2020.
54. Hirschtick JL, Titus AR, Slocum E, et al. Population-based estimates of post-acute sequelae of SARS-CoV-2 infection (PASC) prevalence and characteristics: A cross-sectional study. Published online March 2021.



55. Huang Y, Pinto MD, Borelli JL, et al. COVID Symptoms, Symptom Clusters, and Predictors for Becoming a Long-Hauler: Looking for Clarity in the Haze of the Pandemic. *MedRxiv Prepr Serv Health Sci*. Published online March 2021.
56. Damiano RF, Caruso MJG, Cincoto AV, et al. Psychiatric and Cognitive Morbidity Following Moderate and Severe SARS-CoV-2 Infection: A Cohort Study. Published online April 2021.
57. Chevinsky JR, Tao G, Lavery AM, et al. Late conditions diagnosed 1-4 months following an initial COVID-19 encounter: a matched cohort study using inpatient and outpatient administrative data - United States, March 1-June 30, 2020. *Clin Infect Dis Off Publ Infect Dis Soc Am*. Published online April 2021.
58. Yomogida KS, Zhu S, Rubino F, Figueroa W, Barin N, Holman E. Longitudinal Surveillance of Post-Acute Sequelae of SARS-CoV-2 (PASC) Among Long Beach City Residents, April 1, 2020-December 10, 2020. Published online May 2021.
59. Wong-Chew RM, Cabrera EXR, Valdez CAR, et al. Symptom Cluster Analysis of long COVID-19 in Patients Discharged from the Temporary COVID-19 Hospital in Mexico City: A Longitudinal Study. Published online June 2021.
60. Shoucri SM, Purpura L, DeLaurentis C, et al. Characterising the long-term clinical outcomes of 1190 hospitalised patients with COVID-19 in New York City: a retrospective case series. *BMJ Open*. 2021;11(6):e049488-e049488.
61. Taquet M, Geddes JR, Husain M, Luciano S, Harrison PJ. 6-month neurological and psychiatric outcomes in 236 379 survivors of COVID-19: a retrospective cohort study using electronic health records. *Lancet Psychiatry*. 2021;8(5):416-427.
62. Higgins JPT, Thompson SG, Deeks JJ, Altman DG. Measuring inconsistency in meta-analyses. *BMJ*. 2003;327(7414):557-560. doi:10.1136/bmj.327.7414.557
63. López-León S, Wegman-Ostrosky T, Perelman C, et al. *More than 50 Long-Term Effects of COVID-19: A Systematic Review and Meta-Analysis*. Social Science Research Network; 2021. doi:10.2139/ssrn.3769978
64. Iqbal FM, Lam K, Sounderajah V, Clarke JM, Ashrafian H, Darzi A. Characteristics and predictors of acute and chronic post-COVID syndrome: A systematic review and meta-analysis. *EClinicalMedicine*. 2021;36:100899. doi:10.1016/j.eclinm.2021.100899
65. Taquet M, Dercon Q, Luciano S, Geddes JR, Husain M, Harrison PJ. Incidence, co-occurrence, and evolution of long-COVID features: A 6-month retrospective cohort study of 273,618 survivors of COVID-19. *PLOS Med*. 2021;18(9):e1003773. doi:10.1371/journal.pmed.1003773
66. Huang L, Yao Q, Gu X, et al. 1-year outcomes in hospital survivors with COVID-19: a longitudinal cohort study. *The Lancet*. 2021;398(10302):747-758. doi:10.1016/S0140-6736(21)01755-4
67. Nalbandian A, Sehgal K, Gupta A, et al. Post-acute COVID-19 syndrome. *Nat Med*. 2021;27(4):601-615. doi:10.1038/s41591-021-01283-z

68. Antonelli M, Penfold RS, Merino J, et al. Risk factors and disease profile of post-vaccination SARS-CoV-2 infection in UK users of the COVID Symptom Study app: a prospective, community-based, nested, case-control study. *Lancet Infect Dis.* 2021;0(0). doi:10.1016/S1473-3099(21)00460-6
69. Six-month sequelae of post-vaccination SARS-CoV-2 infection: a retrospective cohort study of 10,024 breakthrough infections | medRxiv. Accessed November 4, 2021. <https://www.medrxiv.org/content/10.1101/2021.10.26.21265508v1.full>
70. Joober R, Schmitz N, Annable L, Boksa P. Publication bias: What are the challenges and can they be overcome? *J Psychiatry Neurosci JPN.* 2012;37(3):149-152. doi:10.1503/jpn.120065
71. Lund LC, Hallas J, Nielsen H, et al. Post-acute effects of SARS-CoV-2 infection in individuals not requiring hospital admission: a Danish population-based cohort study. *Lancet Infect Dis.* 2021;21(10):1373-1382. doi:10.1016/S1473-3099(21)00211-5
72. Suhail Y, Afzal J, Kshitiz. Incorporating and addressing testing bias within estimates of epidemic dynamics for SARS-CoV-2. *BMC Med Res Methodol.* 2021;21(1):11. doi:10.1186/s12874-020-01196-4

### **Acknowledgements**

The authors thank the librarians from the University of Michigan Taubman Health Sciences Library, and in particular, Judith E. Smith, for their guidance on constructing the search strategy for this systematic review.

### **Author Contributions**

Conceptualization: XS, LGF, BM

Methodology: XS, LGF, BM

Investigation: CC (Screener 1), SRH (Screener 2), XS, LGF, BM

Supervision: XS, LGF, BM

Writing – original draft: CC, SRH, LZ, XS, LGF, BM

Writing – review & editing: CC, SRH, LZ, XS, LGF, BM

### **Funding/Support**

The research was sponsored by funding from the University of Michigan School of Public Health and Center for Precision Health Data Science.

### **Conflict of Interest Disclosures**

Authors have no competing interests

## Supplementary Online Content

### Prevalence and Risk Factors for Post-Acute Sequela of COVID-19 (PASC): A Systematic Review and Meta-Analysis

**eMethods 1.** Systematic review procedure

**eMethods 2.** Sample size calculation

**eMethods 3.** Meta-analysis framework

**eMethods 4.** Risk of bias assessment across included articles

**eTable 1.** PRISMA checklist

**eTable 2.** Characterization and synonyms of symptoms

**eTable 3.** Summary of excluded articles by region and follow-up time

**eTable 4.** Summary of significant non-meta-analyzed risk factors for PASC

**eTable 5.** Summary of duration of PASC and symptoms

**eFigure 1.** Stratified analysis of PASC by persisted versus not persisted symptoms

**eFigure 2.** Funnel plot for publication bias assessment among included studies

**eFigure 3.** PRISMA flow diagram for extended search

**eFigure 4.** Forest plots with the prevalence estimates of long COVID-19 stratified by (A) sex, (B) hospitalization, (C) region, and (D) follow-up time, respectively

**eFigure 5.** Meta-analysis of studies with 120 follow-up days stratified by acute-phase hospitalization status of study population

**eFigure 6.** Supplementary meta-analysis of PASC symptom-specific prevalence

**eFigure 7.** Forest plots of risk factors for PASC by a) female and b) asthma

### eReferences

This supplemental material has been provided by the authors to give readers additional information about their work.

## eMethods 1. Systematic review procedure

To perform the systematic review presented herein, we collected both publications and preprints systematically that concern prevalence, risk factors, and/or duration of PASC in any country worldwide. In identifying relevant articles, we searched the following three databases: PubMed, Embase, and iSearch for preprints (encompassing bioRxiv, medRxiv, preprints.org, Research Square, SSRN). The search was conducted on July 5, 2021. Hence, the resulting captured studies reflect those available from January 1, 2020 to July 5, 2021. A second search was conducted on August 12, 2021, to ensure we would not fail to capture recent, important studies. In this search, we used the same search terms and filters as our July 5 search and restricted our attention to studies published in well-established medical journals (i.e., JAMA, Lancet, NEJM, Nature, BMJ, and PloS). Details of study inclusion from the August 12 search can be found in **eFigure 3**. Upon securing citations from the search engines into Mendeley<sup>1</sup>, the reference manager, the resulting body of citations were deduplicated, and subsequently imported into the online tool Rayyan<sup>2</sup> for screening. Search blocks and filters for PubMed, Embase, and iSearch are detailed below.

### PubMed

**Date searched:** 7/5/2021

**Number of results:** 2,884

**Date filter:** January 1, 2020 to present

**Other filters applied:** Language = English

### Search blocks

1. covid-19[tw] OR COVID19[tw] OR SARS-CoV-2[tw] OR SARS-CoV2[tw] OR severe acute respiratory syndrome coronavirus 2[tw] OR 2019-nCoV[tw] OR 2019nCoV[tw] OR coronavirus[tw] OR coronavirus[mh] OR covid-19[mh] OR covid[tw]
2. "long COVID"[tw] OR "long covid-19"[tw] OR "long-covid"[tw] OR "long-covid-19"[tw] OR "long haul"[tw] OR "long hauler"[tw] OR "long haulers"[tw] OR "long-haul"[tw] OR "long-hauler"[tw] OR "long-haulers"[tw] OR "chronic COVID"[tw] OR "chronic covid-19"[tw] OR "post-acute COVID"[tw] OR "post-acute covid-19"[tw] OR "post acute COVID"[tw] OR "post acute covid-19"[tw] OR "persistent COVID"[tw] OR "persistent covid-19"[tw] OR "post-COVID"[tw] OR "post-covid-19"[tw] OR "post COVID"[tw] OR "post covid-19"[tw] OR "sequela"[tw] OR "sequelae"[tw] OR "long-term"[tw] OR "long term"[tw] OR "covid syndrome"[tw] OR "covid-19 syndrome"[tw] OR "post-acute COVID-19 syndrome" [Supplementary Concept] OR "persistent symptom"[tw] OR "persistent symptoms"[tw] OR "PASC"[tw] OR "PACS"[tw] OR "PPCS"[tw] OR "post-acute"[tw] OR "post acute"[tw]
3. "prevalent"[tw] OR "prevalence"[tw] OR "prevalence"[mh] OR "occurrence"[tw] OR "occurrences"[tw] OR "duration"[tw] OR "durations"[tw] OR "length"[tw] OR "lengths"[tw] OR "risk factor"[tw] OR "risk factors"[tw] OR ("risk"[tw] AND "factor"[tw]) OR ("risk"[tw] AND "factors"[tw]) OR "Risk Factors"[mh] OR "predict"[tw] OR "prediction"[tw] OR "predictions"[tw] OR "predicting"[tw] OR "predictive"[tw] OR "predictor"[tw] OR "predictors"[tw] OR "symptom"[tw] OR "symptoms"[tw] OR "define"[tw] OR "defining"[tw] OR "definition"[tw] OR "definitions"[tw] OR "follow up"[tw] OR "follow-up"[tw] OR "followed up"[tw]

1 AND 2 AND 3

## Embase

**Date searched:** 7/5/2021

**Number of results:** 1,390

**Date filter:** January 1, 2020 to present

**Other filters applied:** Language = English, Embase ONLY

1. **'covid 19':ti,ab,de,tn OR covid19:ti,ab,de,tn OR 'sars cov 2':ti,ab,de,tn OR 'sars cov2':ti,ab,de,tn OR 'severe acute respiratory syndrome coronavirus 2':ti,ab,de,tn OR '2019 ncov':ti,ab,de,tn OR 2019ncov:ti,ab,de,tn OR coronavirus:ti,ab,de,tn OR 'coronavirinae'/exp OR 'coronavirus disease 2019'/exp OR covid:ti,ab,de,tn**
2. **'long covid-19':ti,ab,de,tn OR 'long covid':ti,ab,de,tn OR 'long covid 19':ti,ab,de,tn OR 'long haul':ti,ab,de,tn OR 'long hauler':ti,ab,de,tn OR 'long haulers':ti,ab,de,tn OR 'chronic covid':ti,ab,de,tn OR 'chronic covid-19':ti,ab,de,tn OR 'post-acute covid':ti,ab,de,tn OR 'post-acute covid-19':ti,ab,de,tn OR 'post acute covid':ti,ab,de,tn OR 'post acute covid-19':ti,ab,de,tn OR 'persistent covid':ti,ab,de,tn OR 'persistent covid-19':ti,ab,de,tn OR 'post covid 19':ti,ab,de,tn OR 'post covid':ti,ab,de,tn OR 'post covid-19':ti,ab,de,tn OR sequela:ti,ab,de,tn OR sequelae:ti,ab,de,tn OR 'long term':ti,ab,de,tn OR 'covid syndrome':ti,ab,de,tn OR 'covid-19 syndrome':ti,ab,de,tn OR 'persistent symptom':ti,ab,de,tn OR 'persistent symptoms':ti,ab,de,tn OR pasc:ti,ab,de,tn OR pacs:ti,ab,de,tn OR ppcs:ti,ab,de,tn OR 'post acute':ti,ab,de,tn**
3. **prevalent:ti,ab,de,tn OR prevalence:ti,ab,de,tn OR 'prevalence'/exp OR occurrence:ti,ab,de,tn OR occurrences:ti,ab,de,tn OR duration:ti,ab,de,tn OR durations:ti,ab,de,tn OR length:ti,ab,de,tn OR lengths:ti,ab,de,tn OR 'risk factor':ti,ab,de,tn OR 'risk factors':ti,ab,de,tn OR (risk:ti,ab,de,tn AND factor:ti,ab,de,tn) OR (risk:ti,ab,de,tn AND factors:ti,ab,de,tn) OR 'risk factor'/exp OR predict:ti,ab,de,tn OR prediction:ti,ab,de,tn OR predictions:ti,ab,de,tn OR predicting:ti,ab,de,tn OR predictive:ti,ab,de,tn OR predictor:ti,ab,de,tn OR predictors:ti,ab,de,tn OR symptom:ti,ab,de,tn OR symptoms:ti,ab,de,tn OR define:ti,ab,de,tn OR defining:ti,ab,de,tn OR definition:ti,ab,de,tn OR definitions:ti,ab,de,tn OR 'follow up':ti,ab,de,tn OR 'followed up':ti,ab,de,tn**

1 AND 2 AND 3

## iSearch

**Date searched:** 7/5/2021

**Number of results:** 851

**Date filter:** January 1, 2020 to present

**Other filters applied:** Search only title, abstract, preprints only

1. ("long COVID" OR "long covid-19" OR "long-covid" OR "long-covid-19" OR "long haul" OR "long hauler" OR "long haulers" OR "long-haul" OR "long-hauler" OR "long-haulers" OR "chronic COVID" OR "chronic covid-19" OR "post-acute COVID" OR "post-acute covid-19" OR "post acute COVID" OR "post acute covid-19" OR "persistent COVID" OR "persistent covid-19" OR "post-COVID" OR "post-covid-19" OR "post COVID" OR "post covid-19" OR "sequela" OR "sequelae" OR "long-term" OR "long term" OR "covid syndrome" OR "covid-19 syndrome" OR "persistent symptom" OR "persistent symptoms" OR "PASC" OR "PACS" OR "PPCS" OR "post-acute" OR "post acute")
2. ("prevalent" OR "prevalence" OR "occurrence" OR "occurrences" OR "duration" OR "durations" OR "length" OR "lengths" OR "risk factor" OR "risk factors" OR ("risk" AND "factor") OR ("risk" AND "factors") OR "predict" OR "prediction" OR "predictions" OR "predicting" OR "predictive" OR "predictor" OR "predictors" OR "symptom" OR "symptoms" OR "define" OR "defining" OR "definition" OR "definitions" OR "follow up" OR "follow-up" OR "followed up")

1 AND 2

## **eMethods 2. Sample size calculation**

The inclusion/exclusion of sample size in the main text screening was based on a power calculation for Binomial proportions with the formula below:

$$n = \frac{Z^2 P(1 - P)}{d^2}$$

where

n: sample size

Z statistic for 95% CI: z = 1.96, which is the 97.5 percentile point of the standard normal distribution

Expected proportion: P = 0.3

Margin of error: d = 0.05.



### eMethods 3. Meta-analysis framework

We used random effects model with logit transformation and the DerSimonian-Laird (DL) estimator for  $\tau^2$ . Thus, the pooled estimated prevalence of PASC ( $\hat{\theta}$ ) is calculated as:

$$\hat{\theta} = \frac{\sum_i \hat{\theta}_i \hat{w}_i}{\sum_i \hat{w}_i} \text{ with } \hat{w}_i = (\hat{\tau}_{DL}^2 + \hat{\xi}_i)^{-1} \quad (1)$$

where  $i$  represents the  $i$ -th study,  $i = 1, 2, \dots, k$ ;  $\hat{\theta}_i$  is the logit transformed prevalence  $p_i$  in study  $i$  so that  $\hat{\theta}_i = \text{logit}(p_i) = \ln\left(\frac{p_i}{1-p_i}\right)$ , and  $\hat{w}_i$  is the estimated weight for study  $i$  using the inverse-variance method.

The total variance of study  $i$  is the sum of within-study variability denoted by  $\hat{\xi}_i$ , and between-study variability calculated by the DL estimator  $\hat{\tau}_{DL}^2$ . Therefore,  $\hat{w}_i$  equals to the inverse of the variance, i.e.,  $\hat{w}_i = (\hat{\tau}_{DL}^2 + \hat{\xi}_i)^{-1}$

The DL estimator is calculated, as is given below:

$$\hat{\tau}_{DL}^2 = \max\left\{0; \frac{Q_c - (k - 1)}{\sum_i \hat{v}_i - \frac{\sum_i \hat{v}_i^2}{\sum_i \hat{v}_i}}\right\} \text{ where } \hat{v}_i = \hat{\xi}_i^{-1}$$

## **eMethods 4. Risk of bias assessment across included articles**

Using the Joanna Briggs Institute (JBI) tool<sup>3</sup>, studies were evaluated across 9 common sources of bias in observational studies and given a score out of 9 to reflect how well each study handled these biases. The vast majority (31/40) included studies scored 6/9 or 7/9. Only one study received a perfect score, and our lowest score was 4/9. Supplementary file *Supplementary\_RiskofBias.xlsx* contains full results from the risk of bias assessment across the included studies.

Next, we discuss the types of bias that can be introduced in cross-sectional and cohort studies, which make up the majority of the study designs in this review. First, several studies gave COVID-19 cases optional access to a post-COVID clinic or follow-up, which may have resulted in self-selection of sicker individuals. Reporting of symptoms was at times documented through self-report, which has been evidenced to differ from doctor-diagnosed symptoms.<sup>2</sup> Among studies whose target population was a mixture of hospitalized and non-hospitalized individuals, proportions of hospitalized to non-hospitalized patients varied, possibly biasing the results for this group. Misclassification bias may also be of concern. Patients admitted to the ICU are known to sometimes experience so-called Post-Intensive Care Syndrome (PICS), whose symptomatology is somewhat similar to that of PASC.<sup>3</sup> Further, some studies suggest that as many as 85% of PASC patients experience symptom resolution, only relapse at a later date, which could obscure the true proportion of individuals experiencing chronic PASC.<sup>4</sup>

**eTable 1. PRISMA checklist**

Section and Topic	Item #	Checklist item	Location where item is reported <sup>a</sup>
<b>TITLE</b>			
Title	1	Identify the report as a systematic review.	1
<b>ABSTRACT</b>			
Abstract	2	Background: Provide an explicit statement of the main objective(s) or question(s) the review addresses. Methods: Specify the inclusion and exclusion criteria for the review. Specify the information sources (e.g. databases, registers) used to identify studies and the date when each was last searched. Specify the methods used to assess risk of bias in the included studies. Specify the methods used to present and synthesise results. Results: Give the total number of included studies and participants and summarise relevant characteristics of studies. Present results for main outcomes, preferably indicating the number of included studies and participants for each. If meta-analysis was done, report the summary estimate and confidence/credible interval. If comparing groups, indicate the direction of the effect (i.e., which group is favoured). Discussion: Provide a brief summary of the limitations of the evidence included in the review (e.g., study risk of bias, inconsistency and imprecision). Provide a general interpretation of the results and important implications. Other: Specify the primary source of funding for the review. Provide the register name and registration number.	2-4
<b>INTRODUCTION</b>			
Rationale	3	Describe the rationale for the review in the context of existing knowledge.	6-8
Objectives	4	Provide an explicit statement of the objective(s) or question(s) the review addresses.	8
<b>METHODS</b>			
Eligibility criteria	5	Specify the inclusion and exclusion criteria for the review and how studies were grouped for the syntheses.	9, eMethods 1, eMethods 2
Information sources	6	Specify all databases, registers, websites, organisations, reference lists and other sources searched or consulted to identify studies. Specify the date when each source was last searched or consulted.	8
Search strategy	7	Present the full search strategies for all databases, registers and websites, including any filters and limits used.	eMethods 1
Selection process	8	Specify the methods used to decide whether a study met the inclusion criteria of the review, including how many reviewers screened each record and each report retrieved, whether they worked independently, and if applicable, details of automation tools used in the process.	9
Data collection process	9	Specify the methods used to collect data from reports, including how many reviewers collected data from each report, whether they worked independently, any processes for obtaining or confirming data from study investigators, and if applicable, details of automation tools used in the process.	9-10, eMethods 1
Data items	10a	List and define all outcomes for which data were sought. Specify whether all results that were compatible with each outcome domain in	9-10, eTable 2

**eTable 1 Cont'd**

Section and Topic	Item #	Checklist item	Location where item is reported <sup>a</sup>
		each study were sought (e.g., for all measures, time points, analyses), and if not, the methods used to decide which results to collect.	
	10b	List and define all other variables for which data were sought (e.g., participant and intervention characteristics, funding sources). Describe any assumptions made about any missing or unclear information.	9-10
Study risk of bias assessment	11	Specify the methods used to assess risk of bias in the included studies, including details of the tool(s) used, how many reviewers assessed each study and whether they worked independently, and if applicable, details of automation tools used in the process.	11, eMethods 4
Effect measures	12	Specify for each outcome the effect measure(s) (e.g., risk ratio, mean difference) used in the synthesis or presentation of results.	10
Synthesis methods	13a	Describe the processes used to decide which studies were eligible for each synthesis (e.g. tabulating the study intervention characteristics and comparing against the planned groups for each synthesis (item #5)).	9-10
	13b	Describe any methods required to prepare the data for presentation or synthesis, such as handling of missing summary statistics, or data conversions.	10, eTable 2
	13c	Describe any methods used to tabulate or visually display results of individual studies and syntheses.	10-11
	13d	Describe any methods used to synthesize results and provide a rationale for the choice(s). If meta-analysis was performed, describe the model(s), method(s) to identify the presence and extent of statistical heterogeneity, and software package(s) used.	10-11, eMethods 3
	13e	Describe any methods used to explore possible causes of heterogeneity among study results (e.g., subgroup analysis, meta-regression).	10-11, eMethods 3
	13f	Describe any sensitivity analyses conducted to assess robustness of the synthesized results.	11, eFigure 1
Reporting bias assessment	14	Describe any methods used to assess risk of bias due to missing results in a synthesis (arising from reporting biases).	11, eFigure 2
Certainty assessment	15	Describe any methods used to assess certainty (or confidence) in the body of evidence for an outcome.	11, eMethods 4 and eFigure 2
<b>RESULTS</b>			
Study selection	16a	Describe the results of the search and selection process, from the number of records identified in the search to the number of studies included in the review, ideally using a flow diagram.	11, Figure 1
	16b	Cite studies that might appear to meet the inclusion criteria, but which were excluded, and explain why they were excluded.	19
Study characteristics	17	Cite each included study and present its characteristics.	11-12, Figure 1, Table 1
Risk of bias in studies	18	Present assessments of risk of bias for each included study.	eMethods 4
Results of individual studies	19	For all outcomes, present, for each study: (a) summary statistics for each group (where appropriate) and (b) an effect estimate and its precision (e.g. confidence/credible interval), ideally using structured	Figure 2

**eTable 1 Cont'd**

Section and Topic	Item #	Checklist item	Location where item is reported <sup>a</sup>
		tables or plots.	
Results of syntheses	20a	For each synthesis, briefly summarise the characteristics and risk of bias among contributing studies.	12-15
	20b	Present results of all statistical syntheses conducted. If meta-analysis was done, present for each the summary estimate and its precision (e.g. confidence/credible interval) and measures of statistical heterogeneity. If comparing groups, describe the direction of the effect.	12-16, Figure 2-3, Table 2, eFigures 1,4-7
	20c	Present results of all investigations of possible causes of heterogeneity among study results.	12-15, eFigures 1,4,5
	20d	Present results of all sensitivity analyses conducted to assess the robustness of the synthesized results.	eFigure 1,5
Reporting biases	21	Present assessments of risk of bias due to missing results (arising from reporting biases) for each synthesis assessed.	eFigure 2
Certainty of evidence	22	Present assessments of certainty (or confidence) in the body of evidence for each outcome assessed.	eMethods 4 and eFigure 2
<b>DISCUSSION</b>			
Discussion	23a	Provide a general interpretation of the results in the context of other evidence.	16-17
	23b	Discuss any limitations of the evidence included in the review.	19, eMethods 4
	23c	Discuss any limitations of the review processes used.	19
	23d	Discuss implications of the results for practice, policy, and future research.	16-20
<b>OTHER INFORMATION</b>			
Registration and protocol	24a	Provide registration information for the review, including register name and registration number, or state that the review was not registered.	N/A
	24b	Indicate where the review protocol can be accessed, or state that a protocol was not prepared.	N/A
	24c	Describe and explain any amendments to information provided at registration or in the protocol.	N/A
Support	25	Describe sources of financial or non-financial support for the review, and the role of the funders or sponsors in the review.	35
Competing interests	26	Declare any competing interests of review authors.	35
Availability of data, code and other materials	27	Report which of the following are publicly available and where they can be found: template data collection forms; data extracted from included studies; data used for all analyses; analytic code; any other materials used in the review.	N/A

<sup>a</sup> N/A = not applicable.

**eTable 2.** Characterization and synonyms of symptoms

Symptom	Characterization and synonyms
Fatigue	fatigue, felt tired, lassitude/fatigue, malaise and fatigue, malaise or fatigu, persistent fatigue
Cough	cough, dry cough, persistent cough, persistent dry cough
Dyspnea	breathlessness, dyspnea, dyspnoea/shortness of breath, exertional dyspnea, problems breathing, shortness of breath, difficulty breathing, dysponea, shortness of breath/breathlessness
Headache	headache, heachache
Smell	anosmia, loss of smell, reduce sense of smell, hyposmia, alterations of smell, smell disorder
Taste	agusia, dysgeusia, dysguesia, loss of taste, taste disorder, alteration of taste
Smell/Taste	altered sense of smell or taste, anosmia or agusia, anosmia-dysgeusia, anosmia/ageusia, anosmia/agusia, diminished taste/smell, loss of mell/taste, problems with taste or smell, smell or taste disorder, anosmia/dysgeusia, altered smell or taste, taste/smell, loss of taste/smel, anosmia and/or agusia
Anxiety	anxiety, feeling anxious, symptoms of anxiety
Depression	depression, feeling depressed, depressive, depressed mood
Fever	Fever
Myalgia	myalgia, arthralgia, myalgia or arthralgia, myalgias-arthralgias, myalgias, myalgia/arthralgias, unusual muscle pains, muscle aches, muscle pain, muscle aches, persistent muscle pain, muscle aches (myalgia)
Hair loss	alopecia, hair loss, loss hair
Insomnia	insomnia, insomnia, sleep disorder, sleeping disturbances, sleeplessness,
Joint pain	joint pain, articular pains
Sore throat	Sore throat, pharyngodynia, throat itching, throat pain
Chest pain	chest pain, chest pains, nonspecific chest pain
Abdominal pain	abdominal pain
Mood disorders	mood disorders, mood changes, mood disturbances
Diarrhea	Diarrhea, diarrhoea
Digestive	digestive symptoms
Dizziness	Dizziness
Concentration/ Confusion/Brain fog	Confusion, lack of concentration, attention disorders, concentration, concentration problems, confusion/lack of concentration, impairment (brain fog, loss of concentration), inability to concentrate, problems concentrating and thinking, brain fog
Appetite/eating disorder	appetite, anorexia, decreased appetite, decreased or lack of appetite, eating disorders, loss of appetite
Tachycardia	tachycardia, tachycardia-palpitations, palpitations

Symptoms names were inconsistent across studies. Therefore, we grouped symptoms into groups according to similarity as detailed in **eTable 2**.

**eTable 3.** Summary of excluded articles by region and follow-up time <sup>a, b</sup>

<b>Exclusion Reason</b>	<b>Africa</b>	<b>Asia</b>	<b>Australia</b>	<b>Europe</b>	<b>North America</b>	<b>South America</b>	<b>Mix</b>	<b>Total</b>
Abstract only			1	8	8			17
Duplicate cohort				1				1
Duplicated								0
Wrong Follow-up Time	4	6		9	2		1	22
Wrong Index Date	1			1				2
Sample Size	2	7	1	38	11	1	1	61
Wrong Outcome		8		28	16		4	56
Wrong Population		1		14	6	1	4	26
Wrong Publication Type				4	1			5
<b>Total</b>	<b>7</b>	<b>22</b>	<b>2</b>	<b>103</b>	<b>44</b>	<b>2</b>	<b>10</b>	<b>190</b>

<sup>a</sup> Studies excluded during the full-text screening are represented in this table.

<sup>b</sup> Studies where region is not applicable or unknown are not represented in this table

**eTable 4.** Summary of significant non-meta-analyzed risk factors for PASC

<b>Studies</b>	<b>Predictor</b>	<b>Odds Ratio (OR)</b>	<b>95% lower confidence bound</b>	<b>95% upper confidence bound</b>
Augustin et al. <sup>5</sup>	Number of symptoms in acute COVID-19	1.29	1.08	1.55
Naik et al. <sup>6</sup>	Hypothyroidism	4.13	2.20	7.60
	COVID-19 severity: moderate vs mild	1.70	1.10	2.40
Menges et al. <sup>7</sup>	Severe to very severe initial symptoms (mild to moderate reference group)	2.05	1.27	3.34
	Comorbidities	2.08	1.24	3.50
Perlis et al. <sup>8</sup>	Covid severity: somewhat vs not at all	2.59	1.75	3.94
	Covid severity: very vs not at all	3.78	2.54	5.79
	Muscle pain	1.31	1.03	1.67
	Headache	1.44	1.11	1.86
	Shaking	1.3	1.01	1.66
	Age (decade)	1.1	1.02	1.2
Yomogida et al. <sup>10</sup>	Pre-existing condition	2.14	1.33	3.43
	Asthma	4.50	2.12	9.57
	Obesity	7.73	2.51	23.83
	Hypertension	1.86	1.09	3.18
	Severe pre-existing conditions (stroke, cancer, immunocompromising conditions, liver, lung, and kidney disorders)	2.46	1.14	5.30
	Severe Covid at diagnosis (asymptomatic reference group)	13.33	2.43	73.02
	Moderate Covid at diagnosis (asymptomatic reference group)	12.75	2.86	56.88



## eTable 4 Cont'd

Studies	Predictor	Odds Ratio (OR)	95% lower confidence bound	95% upper confidence bound
	Mild Covid at diagnosis (asymptomatic reference group)	5.00	1.51	21.77
	Age 40-54 (25-39 reference group)	1.81	1.05	3.12
Sudre et al. <sup>11</sup>	Fatigue in first week	2.83	2.09	3.83
	Headache in first week	2.62	2.04	3.37
	Dyspnea in first week	2.36	1.91	2.91
	Hoarse voice in first week	2.33	1.88	2.90
	Myalgia in first week	2.22	1.80	2.73
Desgranges <sup>12</sup>	Female	1.67	1.09	2.56
	Overweight/obese	1.67	1.10	2.56

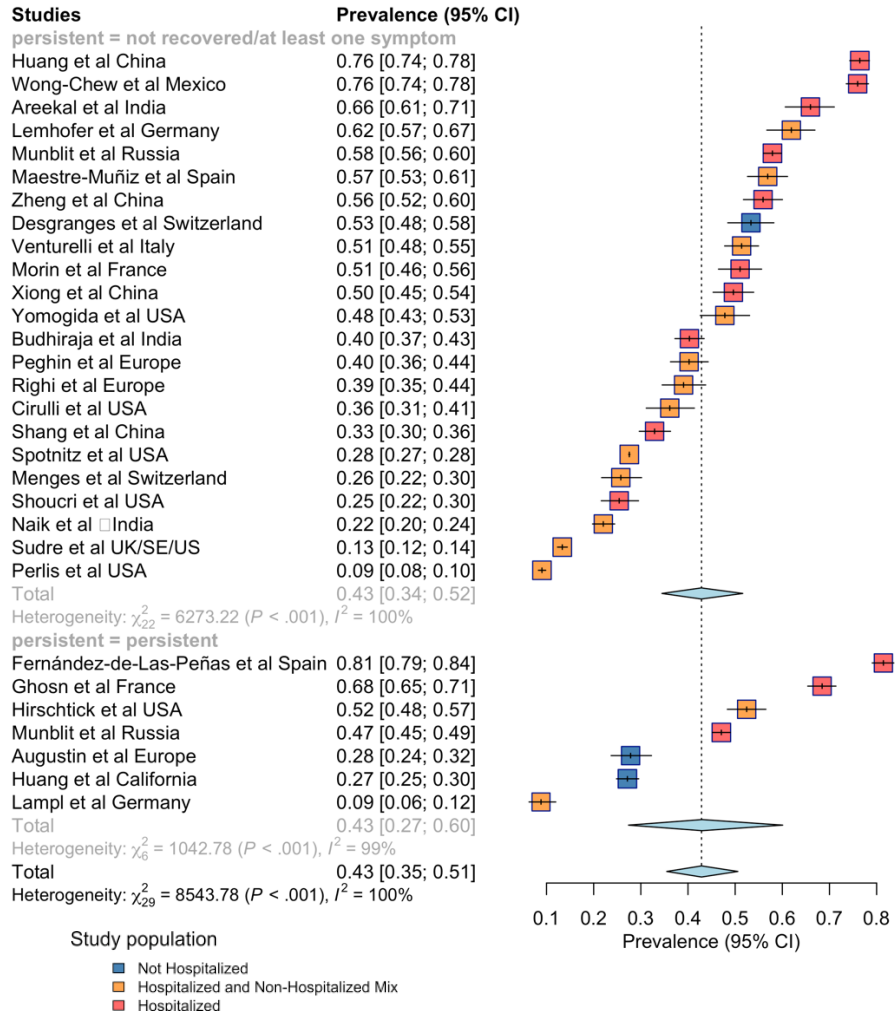
**eTable 4** presents a list of non-meta-analyzed risk factors and their associated odds ratios and confidence intervals. Only factors with a significant positive association with PASC were included (i.e., OR > 1 and CI does not cross 1). If both odds ratios and adjusted odds ratios were provided for a risk factor, we used the adjusted odds ratio.

**eTable 5.** Summary of duration of PASC and symptoms

Outcome	Median duration of PASC or symptoms by studies [IQR]		
	<i>Sudre et al.</i> <sup>11</sup>		<i>Naik et al.</i> <sup>6</sup>
	28+ days	56+ days	28 days+
PASC	41		
Abdominal pain	7	13	
Chest pain	13	46	60 [41-112]
Cough	20	34	60 [45-118]
Delirium	8	14	
Dyspnea	24	59	90 [45-124]
Fatigue	33	73	60 [45-135]
Headache	22	56	
Myalgia	7	30	60 [45-150]
Loss of smell	24	53	
Sore throat	15	33	
Fever	6	11	
Disturbed sleep			45 [40-70]

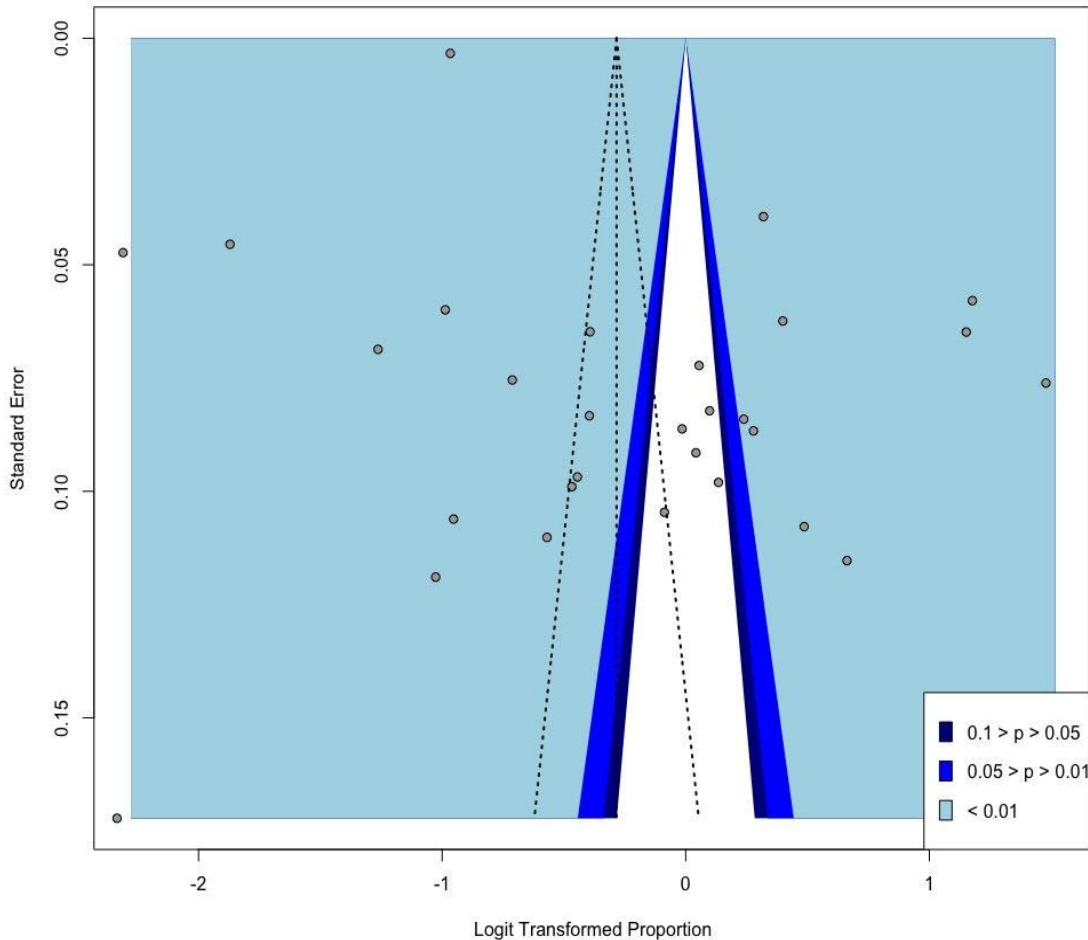
Summary of two studies that evaluated median duration of PASC and specific symptoms. Sudre et al further calculated median duration by different follow-up time, at least 28 days after index date and at least 56 days after the index date.

**eFigure 1. Stratified analysis of PASC by persisted versus not persisted symptoms**



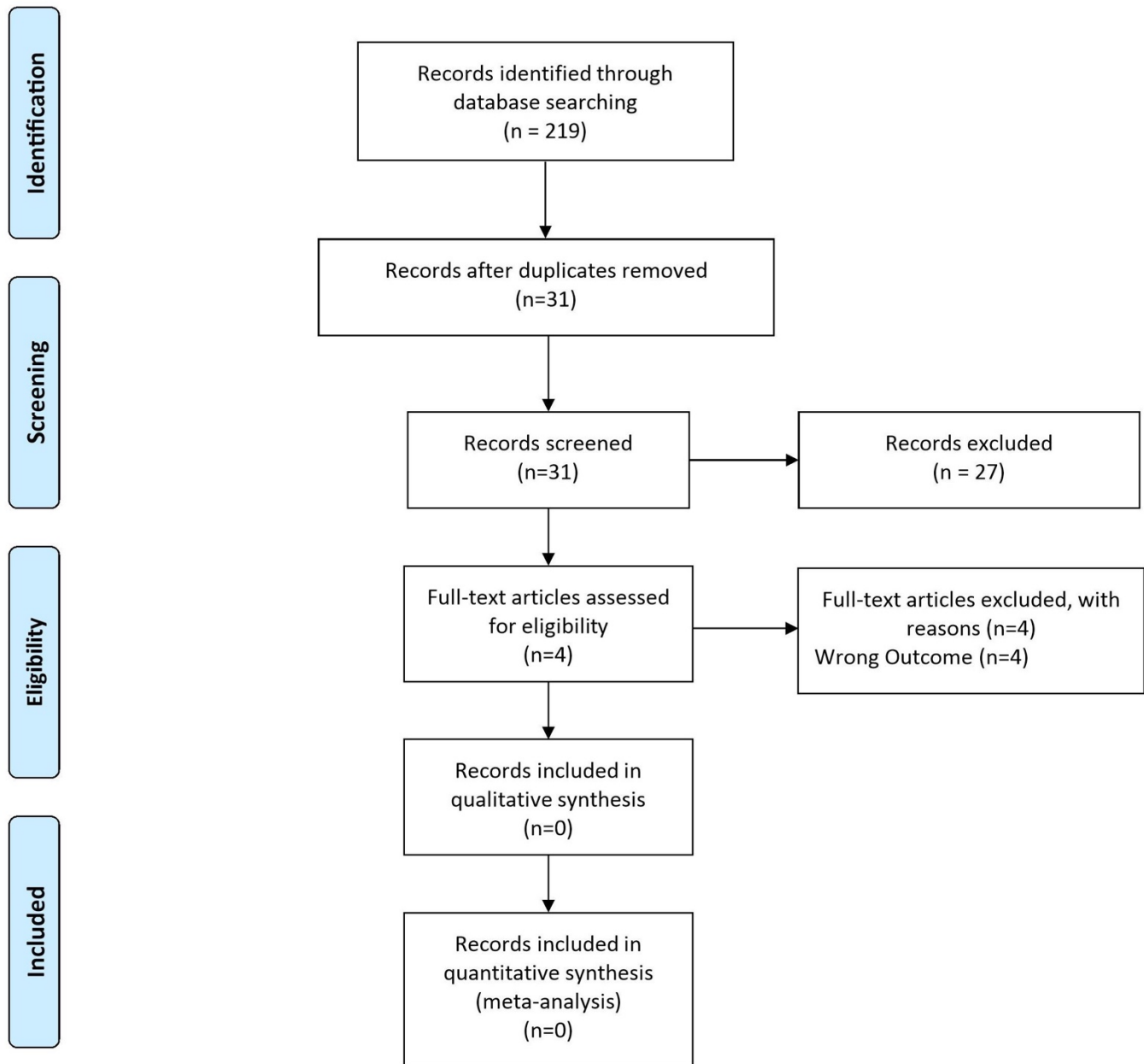
PASC definitions varied across studies. **eFigure 1** stratified PASC prevalence according to whether a study defined PASC as having at least one symptom or not recovered at follow-up, or having persistent symptoms at follow-up.

**eFigure 2.** Funnel plot for publication bias assessment among included studies



**eFigure 2** presents the funnel plot for examination of publication bias among the included studies in the quantitative synthesis. The standard procedure of an initial visual inspection for publication bias suggests that asymmetry may be present. In further formally testing for presence of asymmetry, the Egger's test statistic of 3.18 is significant ( $p$ -value of  $0.003 < 0.05$ ), and as a further check, the Begg rank correlation test is performed with a resulting test statistic that is not significant ( $p$ -value of  $0.679 > 0.05$ ). The contrasting results is generally not uncommon, as the concordance between these two tests has been found to be moderate.<sup>4</sup> Moreover, the Begg test has been evidenced to result in larger  $p$ -values for meta-analyses without a considerably number of studies of which the synthesis herein may qualify (i.e., number of included studies is 29; threshold for small meta-analyses is 25 studies, whereas roughly 75 studies constitute a large meta-analysis).<sup>13</sup> In sum, although the Egger's test indicates a detection of bias from publishing, for meta-analyzing proportion estimates from observational studies, asymmetry in this context does not strictly indicate publication bias as proportions are published without preference over a particular effect size<sup>5</sup>. Additionally, with most included articles being hospital-based or multi-center study designs, the results may be driven by the larger sample sizes. Additionally, we suspect that heterogeneity in the true effect sizes of PASC prevalence, across the geographic entities reflected in the included studies, accounts for some of the horizontal spread in the proportion estimates<sup>5</sup>.

**eFigure 3.** PRISMA flow diagram for extended search

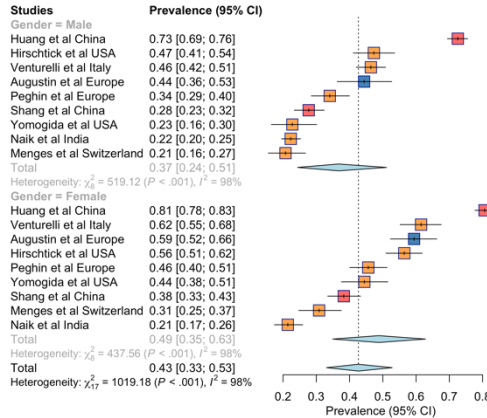


**eFigure 3** details the study selection process for the search extension we performed on August 12, 2021 as described in Supplement B. We found 31 new studies (not covered in the original search) from selected journals, which we then screened. None of these studies met our inclusion/exclusion criteria, and thus none were included in the systematic review or meta-analysis.

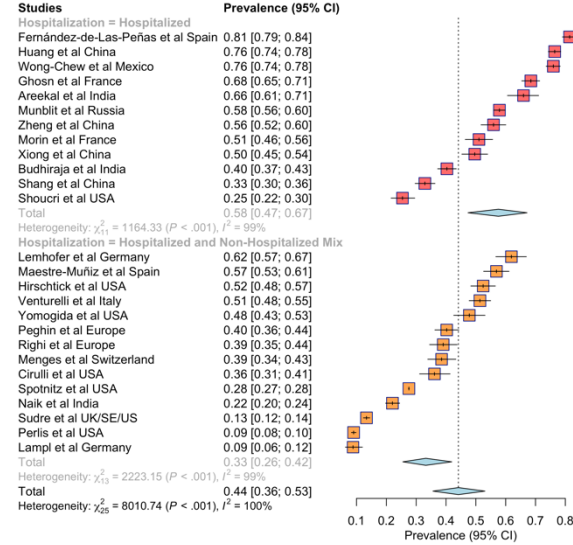
It is made available under a [CC-BY 4.0 International license](https://creativecommons.org/licenses/by/4.0/).

**eFigure 4.** Forest plots with the prevalence estimates of PASC stratified by (A) gender (B) hospitalization, (C) region, and (D) follow-up time, respectively

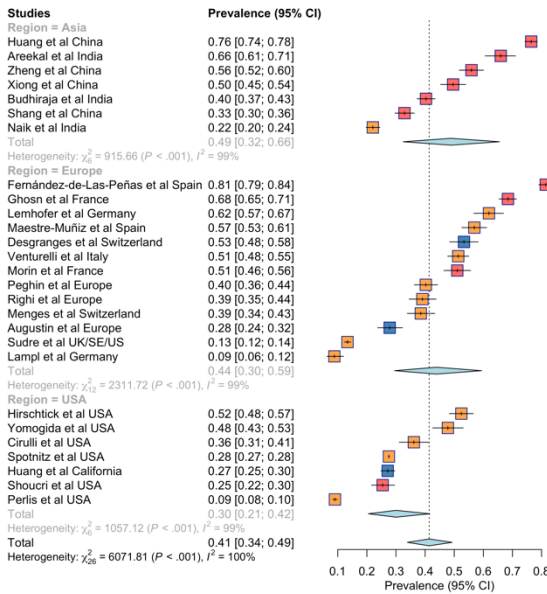
**A By Gender**



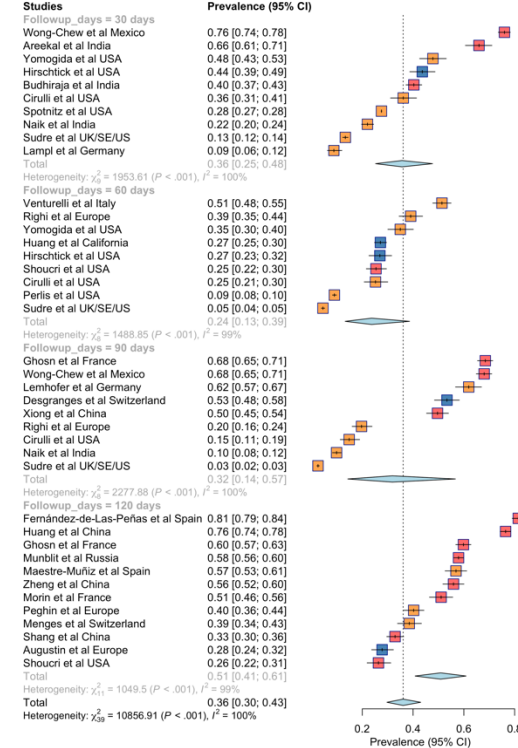
**B By Hospitalization**



**C By Region**



**D By Follow-up Time**



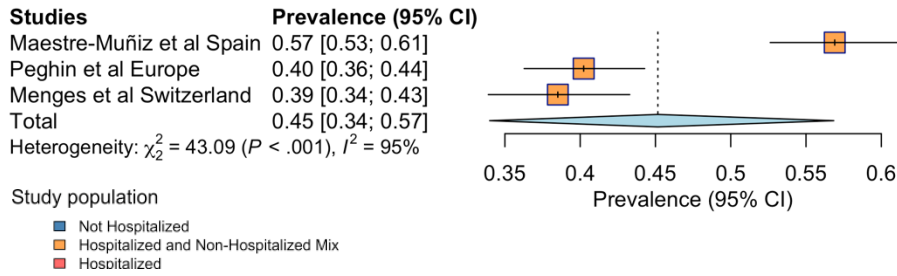
**eFigure 4** reports stratified meta-analysis by gender, hospitalization, region, and follow-up time. The legend is consistent across all subfigures where blue, orange, red represents studies with non-hospitalized population, mixed of hospitalized and non-hospitalized population, and hospitalized population respectively.

Study population

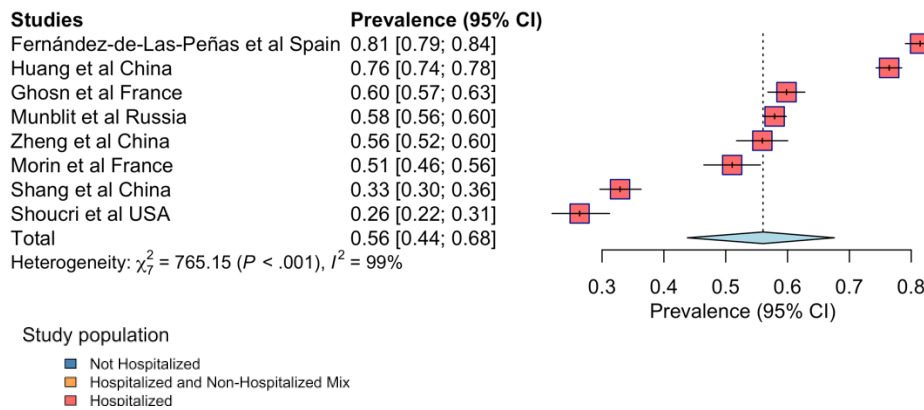
- Not Hospitalized
- Hospitalized and Non-Hospitalized Mix
- Hospitalized

## eFigure 5. Meta-analysis of studies with 120 follow-up days stratified by acute-phase hospitalization status of study population

### a) Mixed of hospitalized and non-hospitalized individuals



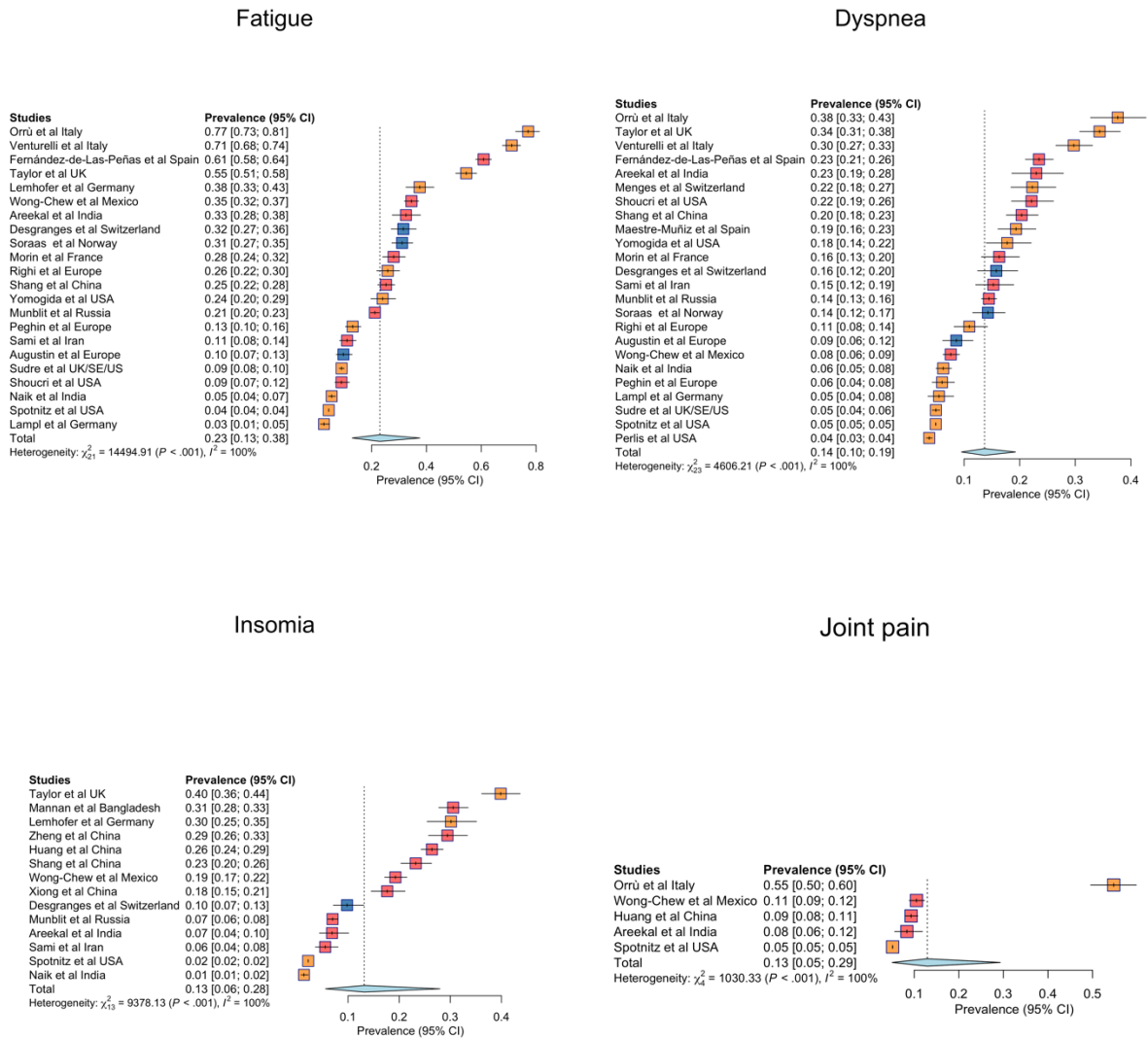
### b) Hospitalized individuals



It is made available under a [CC-BY 4.0 International license](https://creativecommons.org/licenses/by/4.0/).

## eFigure 6 Cont'd

## eFigure 6. Supplementary meta-analysis of PASC symptom-specific prevalence

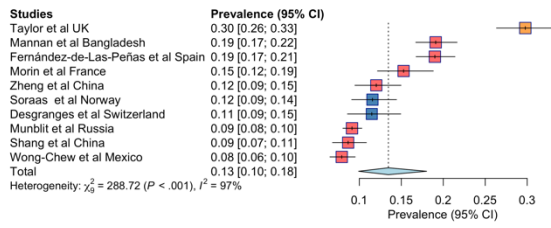




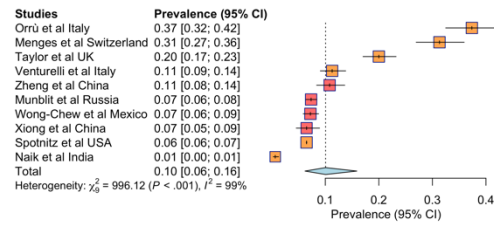
It is made available under a [CC-BY 4.0 International license](https://creativecommons.org/licenses/by/4.0/).

## eFigure 6 Cont'd

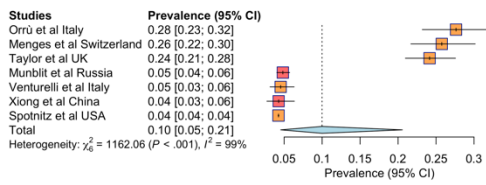
### Memory problems



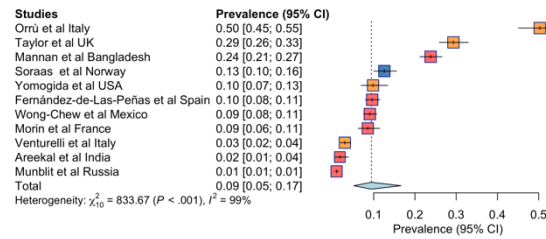
### Anxiety



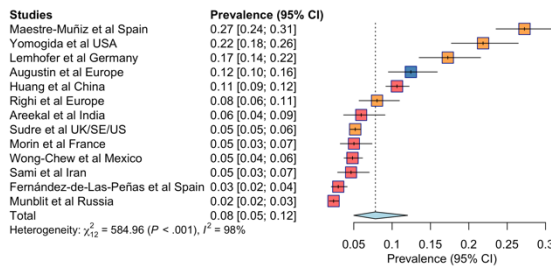
### Depression



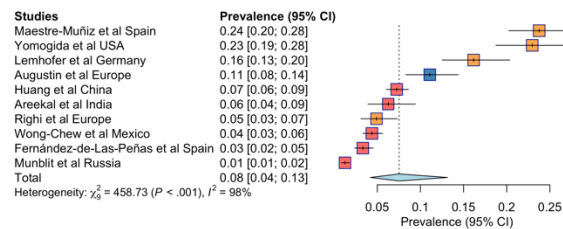
### Concentration or Confusion or Brain fog



### Smell



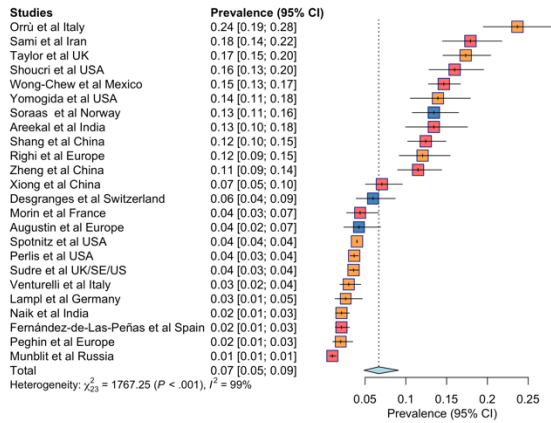
### Taste



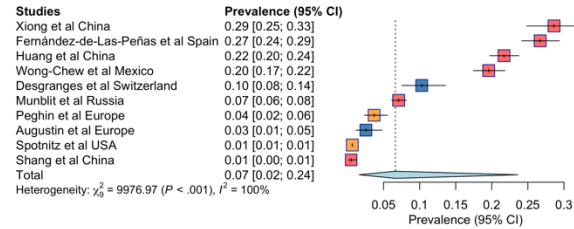
It is made available under a [CC-BY 4.0 International license](https://creativecommons.org/licenses/by/4.0/).

## eFigure 6 Cont'd

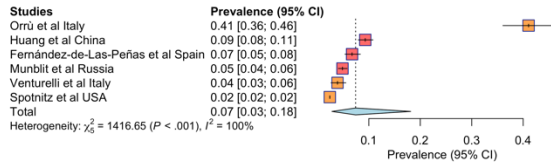
### Cough



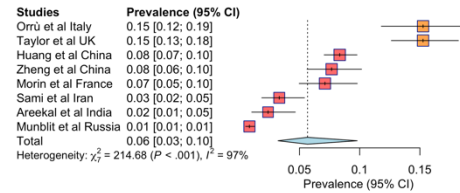
### Hair loss



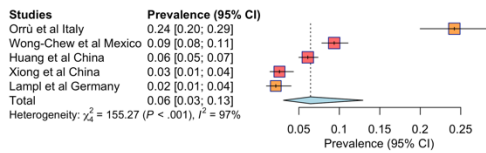
### Tachycardia



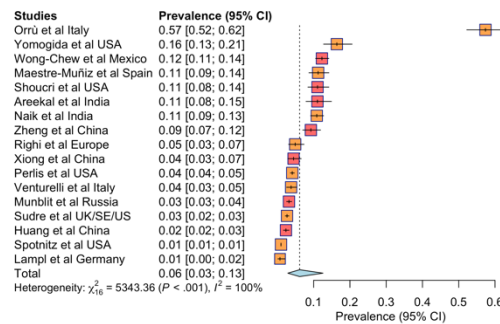
### Appetite or Eating disorder



### Dizziness



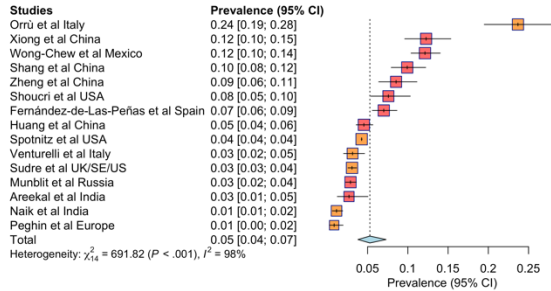
### Myalgia



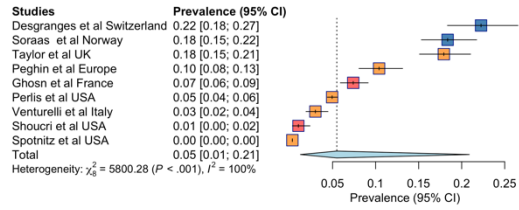
It is made available under a [CC-BY 4.0 International license](https://creativecommons.org/licenses/by/4.0/).

## eFigure 6 Cont'd

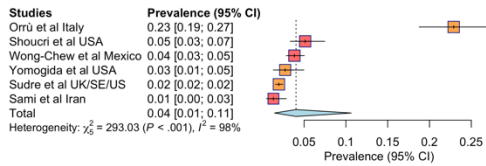
### Chest pain



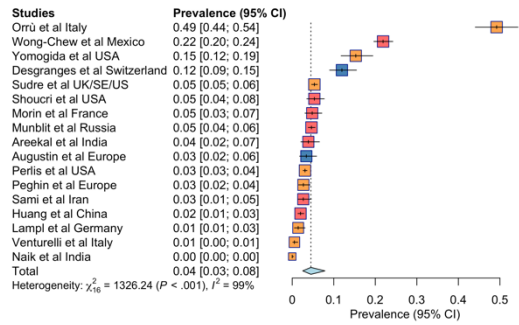
### Smell or Taste



### Abdominal pain

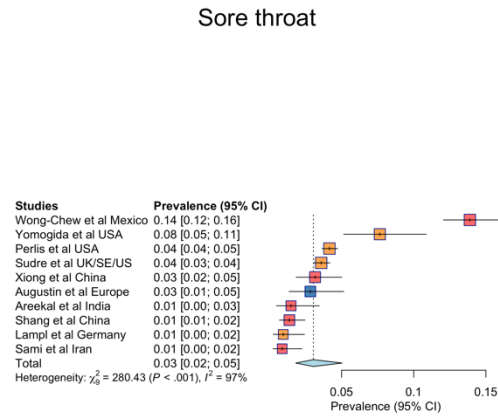
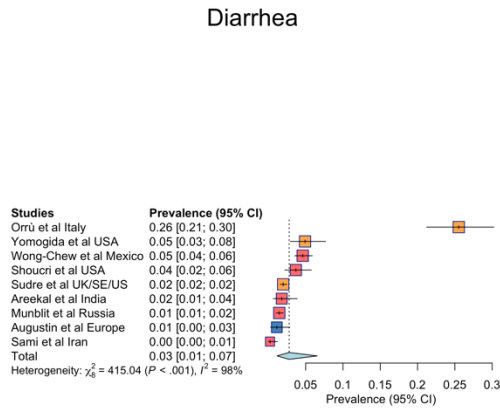


### Headache

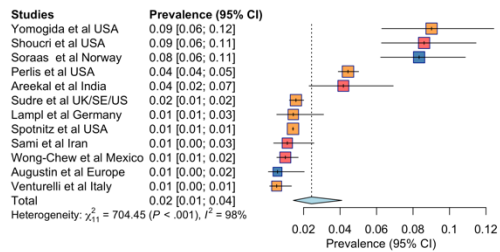


It is made available under a [CC-BY 4.0 International license](https://creativecommons.org/licenses/by/4.0/).

## eFigure 6 Cont'd



### Fever

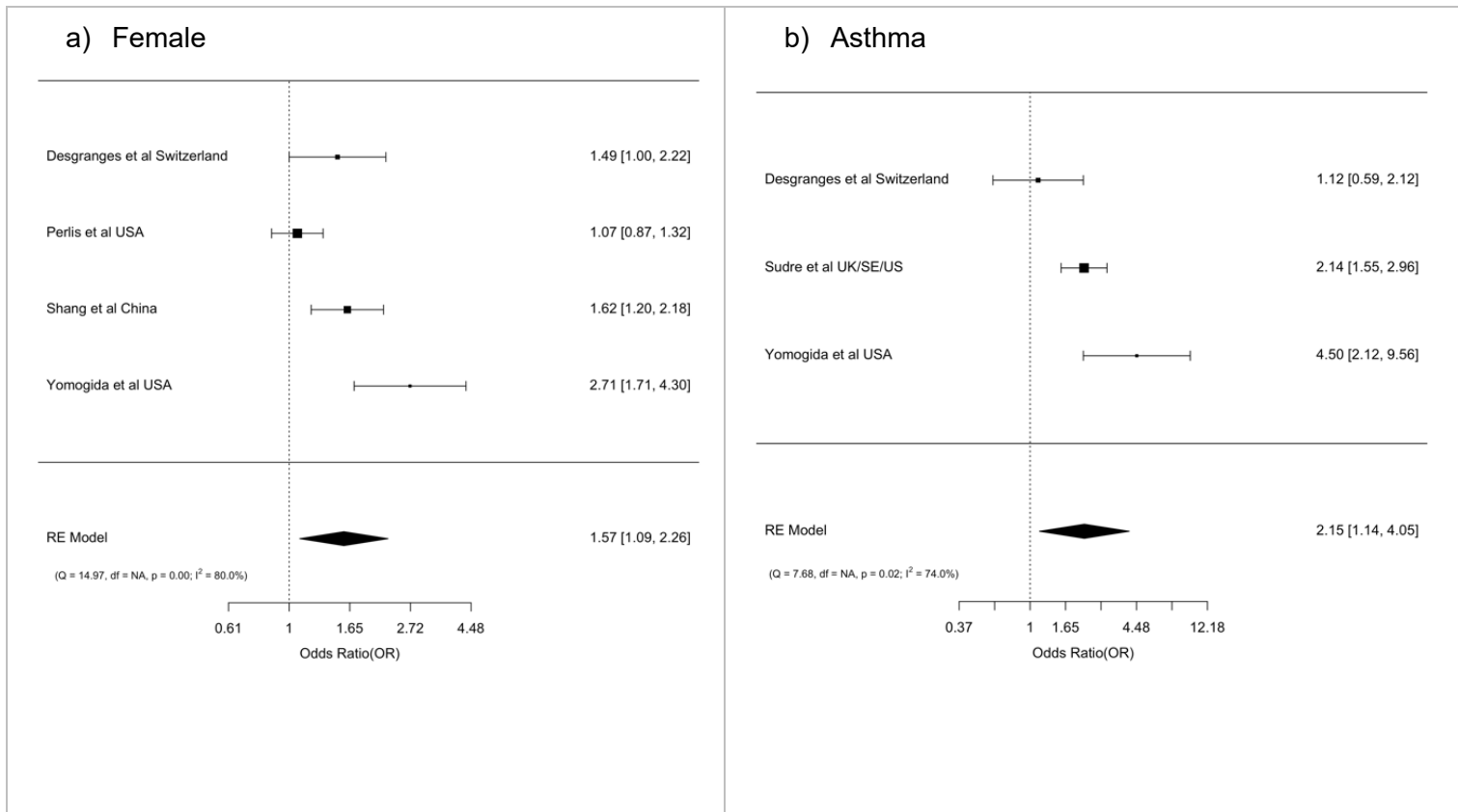


**eFigure 6** reports the forest plot of pooled estimated PASC symptoms from the meta-analysis. The legend is consistent across all subfigures where blue, orange, red represents studies with non-hospitalized population, mixed of hospitalized and non-hospitalized population, and hospitalized population respectively.

#### Study population

- Not Hospitalized
- Hospitalized and Non-Hospitalized Mix
- Hospitalized

**eFigure 7.** Forest plots of risk factors for PASC by a) female and b) asthma



**eFigure 7** reports estimated Odds Ratios for female sex and pre-existing asthma as a predictor of PASC.

## eReferences

1. Knapp G, Biggerstaff BJ, Hartung J. Assessing the Amount of Heterogeneity in Random-Effects Meta-Analysis. *Biom J.* 2006;48(2):271-285. doi:10.1002/bimj.200510175
2. Onur I, Velamuri M. The gap between self-reported and objective measures of disease status in India. *PLOS ONE.* 2018;13(8):e0202786. doi:10.1371/journal.pone.0202786
3. Jaffri A, Jaffri UA. Post-Intensive care syndrome and COVID-19: crisis after a crisis? *Heart Lung.* 2020;49(6):883-884. doi:10.1016/j.hrtlng.2020.06.006
4. Davis HE, Assaf GS, McCorkell L, et al. Characterizing Long COVID in an International Cohort: 7 Months of Symptoms and Their Impact.; 2021:2020.12.24.20248802. doi:10.1101/2020.12.24.20248802
5. Augustin M, Schommers P, Stecher M, et al. Post-COVID syndrome in non-hospitalised patients with COVID-19: a longitudinal prospective cohort study. *Lancet Reg Health Eur.* 2021;6:100122-100122.
6. Naik S, Soneja M, Haldar S, et al. Post COVID-19 Sequelae: A Prospective Observational Study from Northern India.; 2021:2021.06.28.21259658. doi:10.1101/2021.06.28.21259658
7. Menges D, Ballouz T, Anagnostopoulos A, et al. Burden of Post-COVID-19 Syndrome and Implications for Healthcare Service Planning: A Population-based Cohort Study. Published online 2021.
8. Perlis RH, Green J, Santillana M, et al. Persistence of symptoms up to 10 months following acute COVID-19 illness. *MedRxiv Prepr Serv Health Sci.* Published online 2021.
9. Wong-Chew RM, Cabrera EXR, Valdez CAR, et al. Symptom Cluster Analysis of long COVID-19 in Patients Discharged from the Temporary COVID-19 Hospital in Mexico City: A Longitudinal Study. Published online June 1, 2021. doi:10.20944/preprints202106.0011.v1
10. Yomogida KS, Zhu S, Rubino F, Figueroa W, Barin N, Holman E. Longitudinal Surveillance of Post-Acute Sequelae of SARS-CoV-2 (PASC) Among Long Beach City Residents, April 1, 2020-December 10, 2020. Published online 2021.
11. Sudre CH, Murray B, Varsavsky T, et al. Attributes and predictors of long COVID. *Nat Med.* 2021;27(4):626-631. doi:10.1038/s41591-021-01292-y
12. Desgranges F, Tadini E, Munting A, et al. Post-COVID-19 syndrome in outpatients: a cohort study. Published online 2021.
13. Lin L, Chu H, Murad MH, et al. Empirical Comparison of Publication Bias Tests in Meta-Analysis. *J Gen Intern Med.* 2018;33(8):1260-1267. doi:10.1007/s11606-018-4425-7