

Title: The impact of health literacy-sensitive design and heart age in a cardiovascular disease prevention decision aid: randomised controlled trial and end user testing

Authors: Carissa Bonner, Carys Batcup, Julie Ayre, Erin Cvejic, Lyndal Trevena, Kirsten McCaffery, Jenny Doust

Affiliations: The University of Sydney, Faculty of Medicine and Health, School of Public Health

Correspondence:

Dr Carissa Bonner

Rm 128A, Edward Ford Building A27 | The University of Sydney | NSW | 2006

T +61 2 9351 7125 | F +61 2 9351 5049

E carissa.bonner@sydney.edu.au

Acknowledgments:

This study was funded by a Vanguard Grant from the National Heart Foundation of Australia (ID 102215)

Ethics approval:

This study has ethics approval from the University of Sydney Human Research Ethics Committee (ID 2019/774).

Trial registration:

The trial protocol was pre-registered at ANZCTR (Trial number ACTRN12620000806965).

ABSTRACT

Introduction: Shared decision making is as an essential principle for cardiovascular disease (CVD) prevention, where asymptomatic people are considering lifelong medication and lifestyle changes. This project aimed to develop and evaluate the first literacy-sensitive CVD prevention decision aid (DA) developed for people with low health literacy, and investigate the impact of literacy-sensitive design and heart age.

Methods: We developed the standard DA based on international standards. The literacy-sensitive version included simple language, supporting images, white space and a lifestyle action plan. A randomised trial included 859 people aged 45-74 using a 3 (DA: standard, literacy-sensitive, control) x 2 (heart age: heart age + percentage risk, percentage risk only) factorial design, with outcomes including prevention intentions/behaviours, gist/verbatim knowledge of risk, credibility, emotional response and decisional conflict. We iteratively improved the literacy-sensitive version based on end user testing interviews with 20 people with varying health literacy levels.

Results: Immediately post-intervention (n=859), there were no differences between the DA groups on any outcome. The heart age group was less likely to have a positive emotional response, perceived the message as less credible, and had higher gist/verbatim knowledge of heart age risk but not percentage risk. After 4 weeks (n=596), the DA groups had better gist knowledge of percentage risk than control. The literacy-sensitive decision aid group had higher fruit consumption, and the standard decision aid group had better verbatim knowledge of percentage risk. Verbatim knowledge was higher for heart age than percentage risk amongst those who received both.

Discussion: The literacy-sensitive DA resulted in increased knowledge and lifestyle change for participants with varying health literacy levels and CVD risk results. Adding heart age did not increase lifestyle change intentions or behaviour but did affect psychological outcomes, consistent with previous findings.

Key words: decision aids, shared decision making, risk communication, heart age, cardiovascular disease prevention, behaviour change, health literacy

MeSH Terms: Health Literacy, Cardiovascular Diseases, Decision Making (Shared), Life Style, Decision Support Techniques

INTRODUCTION

Prevention of cardiovascular disease (CVD) includes lifestyle interventions and medication for those at highest risk who are most likely to benefit. An “absolute risk” approach is supported by clinical evidence and endorsed by most national guidelines around the world¹⁻⁵. The absolute risk of a heart attack or stroke in the next 5-10 years can be assessed using widely available calculators¹, but there is substantial underuse of these tools in practice⁶⁻¹¹. Providing medication to high risk and not low risk patients is a cost-effective approach⁶. However, up to 75% of high risk patients are not receiving recommended medication to prevent death and disability from CVD, while 25% of low risk patients are taking medication they are very unlikely to benefit from⁷. Recent guideline changes have led to calls for a shared decision making approach, to ensure medication prescribing for blood pressure and cholesterol is more in line with patient values¹²⁻¹⁴.

We also know that health literacy plays a role in CVD prevention. Low health literacy is common in many countries, with estimates ranging from 36 – 60% of the population in Australia, Europe and the US¹⁵⁻¹⁷. This is associated with poorer self-management, less access to the health system, increased chronic disease including CVD, and increased mortality¹⁸. It is therefore important to specifically engage this group in communication strategies about CVD prevention. This requires changes to the design of online patient resources, since most consumers seek health information online, but fewer than 1% of health information websites meet recommended readability levels; Grade 8 is recommended to meet the needs of people with varying health literacy^{19,20}.

Some countries have used online CVD risk assessment tools for absolute risk and heart age to engage consumers in CVD prevention, with millions of users worldwide²¹⁻²⁴. However, our systematic review of 73 online CVD risk assessment tools available to consumers found they were not suitable for people with lower health literacy: their readability level was too high; they frequently used unexplained medical terms; few used best practice risk communication formats such as frequencies in icon arrays; and they rated poorly on actionability (i.e. clarity in instructions of

what actions/steps to take), which makes it hard for the average person to know what to do about the risk assessment result²⁵. Our review of 25 online decision aids for CVD prevention found similar issues with understandability and actionability²⁶, and few included lifestyle change as an option to reduce risk with many focusing on medication only.

There are several evidence-based strategies to address the issue of communicating CVD risk to people with lower health literacy:

- 1) Use literacy-sensitive design to improve the readability of health information and reduce the cognitive load of action plans for behaviour change²⁷⁻²⁹.
- 2) Use best practice risk communication formats to explain abstract probabilities (e.g. 16%) using icon arrays and more concrete frequencies (e.g. 16 out of 100 people like you)³⁰⁻³³.
- 3) Use patient decision aids to improve understanding and decision making, including both lifestyle change and medication as clear actions that patients can take to reduce their risk^{27,34,35}.

This project aimed to develop and test a new consumer engagement tool for CVD prevention based on the above strategies, to address the needs of Australians with different levels of health literacy. It builds on our previous development of a GP-focused risk calculator and decision aid³⁶, and evaluation of the national heart age calculator²⁴.

METHODS

Stage 1: Develop consumer engagement tool

In stage one we developed the literacy-sensitive version of our existing GP decision aid³⁷, which calculates 5 year risk of a CVD event based on current guidelines¹ and shows the effects of 9 lifestyle, medication and supplement interventions³⁶. We added heart age to the absolute CVD risk calculation based on published methods³⁸. The literacy-sensitive design included simple language, supporting images and white space to improve readability and understandability²⁸, and a novel action plan format our team developed that has been shown to reduce unhealthy lifestyle behaviours amongst people with low health literacy²⁹. We added options for physical activity and smoking to the existing tool to reduce unhealthy snacking, drawing on previous literature on effective if-then plans in these areas^{39,40}.

Stage 2: Randomised trial to identify best formats for low vs high health literacy

Design

The randomised trial was based on a 3x2 factorial design to test the effect of literacy-sensitive design (literacy-sensitive DA, standard DA, or control: Heart Foundation patient information) and risk format (explaining CVD risk only (as a percentage risk), or CVD risk percentage + heart age) on psychological and behavioural outcomes. See Table 1/Figure 1 for study design, and Figure 2/Appendix 1 for example intervention content. The trial was pre-registered at ANZCTR (Trial number ACTRN12620000806965).

Table 1: The 2x3 study design

| Group | Risk results | Decision aid | Action plan |
|--|---|--|---|
| Control HF information risk % + heart age | Absolute percentage risk shown in the style of HF risk calculator results ⁴¹ . Heart age also shown in style of HF heart age calculator. | In the style of the NVDPA risk calculator ⁴¹ ; participants can change any risk factors, then are presented with their risk percentage compared with their 'updated risk' based on the changes they made to risk factors. They are then advised to book in for a heart health check with their doctor. | Participants receive feedback on their blood pressure, cholesterol and BMI. Then they are prompted to select a topic to see more information about (diet, exercise or smoking). This was from the HF website ⁴²⁻⁴⁴ . |
| Control HF information risk % only | Same as above but with no heart age. | | |
| Standard DA risk % + heart age | Absolute percentage risk shown alongside an icon array, with the number of icons in red (out of 100 grey icons) demonstrating the risk percentage. Heart age also shown in style of HF heart age calculator. | Participants were asked to choose an option to reduce their risk, out of 9 potential options in 3 categories (medication, lifestyle changes and supplements). Once they chose an option, they were shown an icon array with the new risk in red, and the difference between their current and new risk in green. They were then shown information from our current CVD risk website about the option they chose, as well as a table of | Participants had to choose a lifestyle behaviour change to make (smoking, exercise or diet) and then create a goal. They were then guided through creating a 'SMART goal' style plan, taken from our current CVD risk website ³⁷ . |
| Standard DA risk % only | Same as above but with no heart age. | | |

| | | the benefits and harms of that choice ³⁷ . | |
|---|---|--|--|
| Literacy-sensitive DA risk % + heart age | Absolute percentage risk shown alongside an icon array, with the number of icons in red (out of 100 grey icons) demonstrating the risk percentage. Heart age also shown with more explanation than control and standard DA conditions. | The same as for the standard decision aid above, however the information and benefits and harms were edited to be appropriate for all levels of health literacy, for example by introducing white space, images, and reducing the readability level. | Participants were prompted to change either their smoking, exercise or snacking habits. They were then guided through creating an action plan based on implementation intentions, or 'if-then' plans. The snacking action plan was previously developed by our team ²⁹ , and the exercise and smoking plans were in the same style using research in those areas ^{39,40} . |
| Literacy-sensitive DA risk % only | Same as above but with no heart age. | | |

DA: decision aid, HF: Heart Foundation

Recruitment

A national sample was recruited through Qualtrics, an online social research agency, with stratified sampling based on gender/age groups (5 year age groups from 45-74 years). Participants completed a CVD risk assessment based on Australian guidelines and the New Zealand approach to calculating heart age^{1,38}. If blood pressure or cholesterol were not known, the average by age/gender based on non-diabetic participants in the AusDiab cohort was used (accessed via JD), and all participants were advised to see a GP for a more accurate risk assessment. Those with established CVD or taking CVD prevention medication were excluded. Duplicate IP addresses were replaced, and stratified sampling was relaxed with additional quality checks added if hard to reach groups did not reach quota after 2 weeks.

Measures

Established measures were used for the primary outcome of behavioural intentions (validated Theory of Planned Behaviour scale applied to smoking, diet, exercise and GP visit)⁴⁵⁻⁴⁷. Secondary outcomes included: self-reported behaviour after 4 weeks compared to national guidelines for diet

and physical activity^{46,47}; gist and verbatim knowledge (absolute risk percentage and heart age); emotional response using the PANAS scale (three positive emotions e.g. hopeful, three negative emotions e.g. anxious)⁴⁸; credibility of the information (that the information is personally relevant)⁴⁹; and decision conflict scale (uncertainty in decision making)⁵⁰. Full details are in Table 2.

Table 2: Psychological and behavioural outcomes measured in the analyses

| Outcome | Items | Response scale | Post-intervention | 4 week follow up |
|---|---|--|-------------------|------------------|
| Lifestyle intentions ⁴⁵ | I intend to smoke less / improve my diet / increase the amount of physical activity I do in the next 4 weeks (average 2-3 items depending on smoking) | 1=Strongly disagree to 7=Strongly agree | X | |
| Medication intentions ⁴⁵ | I intend to talk to my GP about taking blood pressure lowering medication / cholesterol lowering medication / aspirin in the next 4 weeks (average 3 items) | 1=Strongly disagree to 7=Strongly agree | X | |
| Supplement intentions ⁴⁵ | I intend to take fish oil / multivitamin / antioxidant supplements in the next 4 weeks (average 3 items) | 1=Strongly disagree to 7=Strongly agree | X | |
| Credibility ⁴⁹ ($\alpha=.89$) | I felt that the numbers received were “my numbers” I found the results to be written personally for me I felt that the information was relevant to me I felt that the information was designed specifically for me | 1=Strongly disagree to 7=Strongly agree | X | |
| Emotion (PANAS scale; positive $\alpha=.81$; negative $\alpha=.85$) ⁴⁸ | My results made me feel: Positive subscale: hopeful / optimistic / enthusiastic Negative subscale: afraid / anxious / worried | 0=None of this feeling to 10=A lot of this feeling | X | |
| Gist knowledge of percentage risk | My risk level for having a heart attack or stroke in the next 5 years was | Low / Medium / High / I don't know | X | X |
| Verbatim knowledge of percentage risk | My percentage risk of having a heart attack or stroke in the next 5 years was | Numerical / I don't know | X | X |
| Gist knowledge of heart age | My heart age result was | Below my actual age / the same as my actual age / above my actual age / I wasn't shown my heart age / I don't know | X | X |
| Verbatim knowledge of heart age | My heart age was | Numerical / I don't know | X | X |
| Decisional conflict (SURE scale) ⁵⁰ | Do you feel sure about the best choice for you? | Yes/No | X | |
| | Do you know the benefits and risks of each option? | | | |
| | Are you clear about which benefits and risks matter most to you? | | | |
| | Do you have enough information to make a choice? | | | |
| Smoking* | Do you currently smoke cigarettes | Yes/No | | X |
| | In the last week, how many cigarettes did you usually smoke per day? | Numerical (if yes) | | |

| | | | | |
|----------------------------------|---|--|--|---|
| Physical activity ^{46*} | In the last week, how many times did you do 20 minutes or more of vigorous-intensity physical activity that made you sweat or puff and pant? | 0-10+ (assessed as adequate/inadequate against Australian diet guidelines) | | X |
| | In the last week, how many times did you do 30 minutes or more of moderate-intensity physical activity or walking that increased your heart rate or makes you breathe harder than normal? | | | |
| Diet ^{47*} | In the last week, how many serves of fruit did you usually eat per day? | 0-10+ (with examples of serves provided; assessed as adequate/inadequate against Australian diet guidelines) | | X |
| | In the last week, how many serves of vegetables did you usually eat per day? | | | |
| | In the last week, how many serves of unhealthy snacks did you usually eat per day? | | | |
| | In the last week, how much soft drink, cordial or sports drinks do you usually drink per day? | | | |
| Seeing a doctor | Have you discussed your risk of heart disease with a doctor in the last 4 weeks? (including blood pressure, cholesterol or lifestyle change) | Yes/No | | X |
| | Have you made an appointment to discuss your risk of heart disease with a doctor? (including blood pressure, cholesterol or lifestyle change) | | | |
| Helpline | Have you used the Heart Foundation helpline for more lifestyle change support? | Yes/No | | X |

*also asked pre-intervention, with pre-intervention behaviour controlled for in analyses

Analysis

A priori sample size calculations determined that 85 participants per randomised group (total n=510) would yield 90% power to detect a moderate effect size of $d=0.5$ (standardised difference) in the primary outcome of intention to change lifestyle or any of the secondary outcomes, assuming a two-sided alpha of 0.05. We aimed to recruit 20% more cases to account for potential missing values, totalling 600 participants (100 per group) at follow-up. This sample was inflated for recruitment to 850 to account for potential attrition of up to 30% between the intervention and follow-up.

Continuous outcome variables were modelled using linear regression. Dichotomous outcomes were analysed using modified Poisson regression (using a log-link function with robust error variances). Ordinal logistic regression was used to analyse ordered categorical outcomes. Count outcomes were modelled using negative binomial regression. All regression models included decision aid group (literacy-sensitive decision aid; standard decision aid; or basic Heart Foundation patient information) and risk format (CVD risk percentage only, or CVD risk percentage + heart age) as categorical variables and controlled for health literacy adequacy (categorical based on the Newest Vital Sign (NVS) measure^{51,52}: low; moderate; adequate) and absolute risk (percentage). Post-intervention and follow-up outcomes were analysed separately, with follow-up analyses controlling for pre-intervention values where available. Pairwise comparisons were conducted to address the hypotheses. We also conducted exploratory analyses of potential differences in decision aid effects between health literacy levels by including a literacy-sensitive-by-decision aid interaction term, and by heart age category for heart age groups (younger/same vs older in stratified analyses). McNemar's Chi-squared test for paired proportions was used to compare knowledge of heart age versus percentage risk amongst those who saw both. Analyses were conducted using Stata/IC v16.1 (StataCorp, College Station, TX, USA).

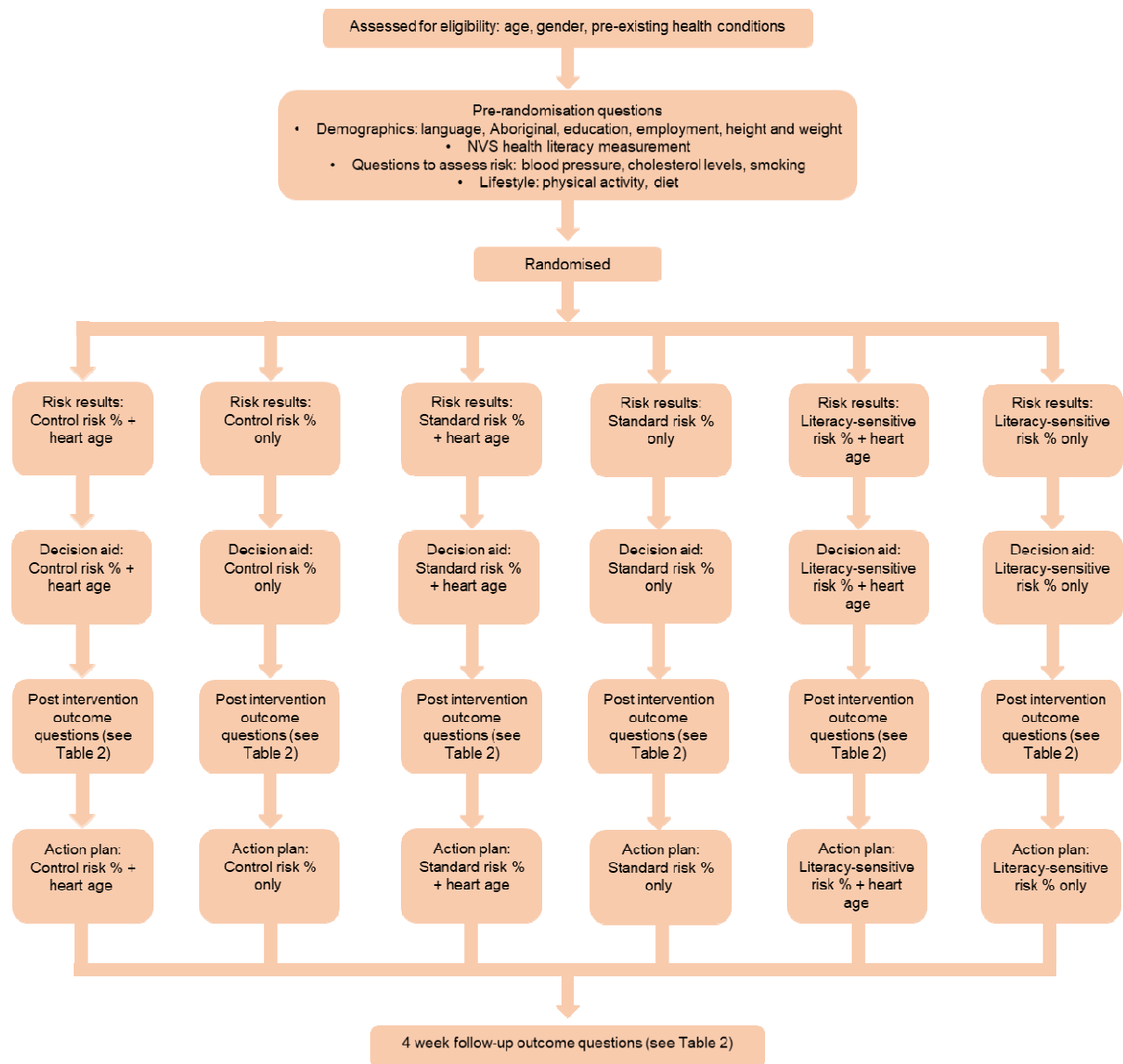
Hypotheses

1. The 2 decision aid formats will be more effective than standard Heart Foundation information;
2. The literacy-sensitive decision aid will be more effective than the standard decision aid for everyone (not just people with lower health literacy);
3. Adding heart age to absolute risk will be more effective than absolute risk alone.

Stage 3: Iterative end user testing with varying health literacy levels

Participants in the trial were invited to opt-in to a “think aloud” interview to provide further end user testing and feedback for the literacy-sensitive version of the intervention. Participants went through the risk calculator in full, while saying out loud everything they were thinking, for example any areas of confusion. Further questions were also asked to prompt more discussion or elaboration. Transcripts were thematically coded and discussed after each set of 4-5 interviews, and improvements were made to the intervention before the next set of interviews. We conducted 2 rounds of interviews for people with low health literacy as our key target group (n=8), and then tested the improved tool with people who had higher health literacy to ensure it was suitable for these users in another two rounds (n=12).

Figure 1: Study design

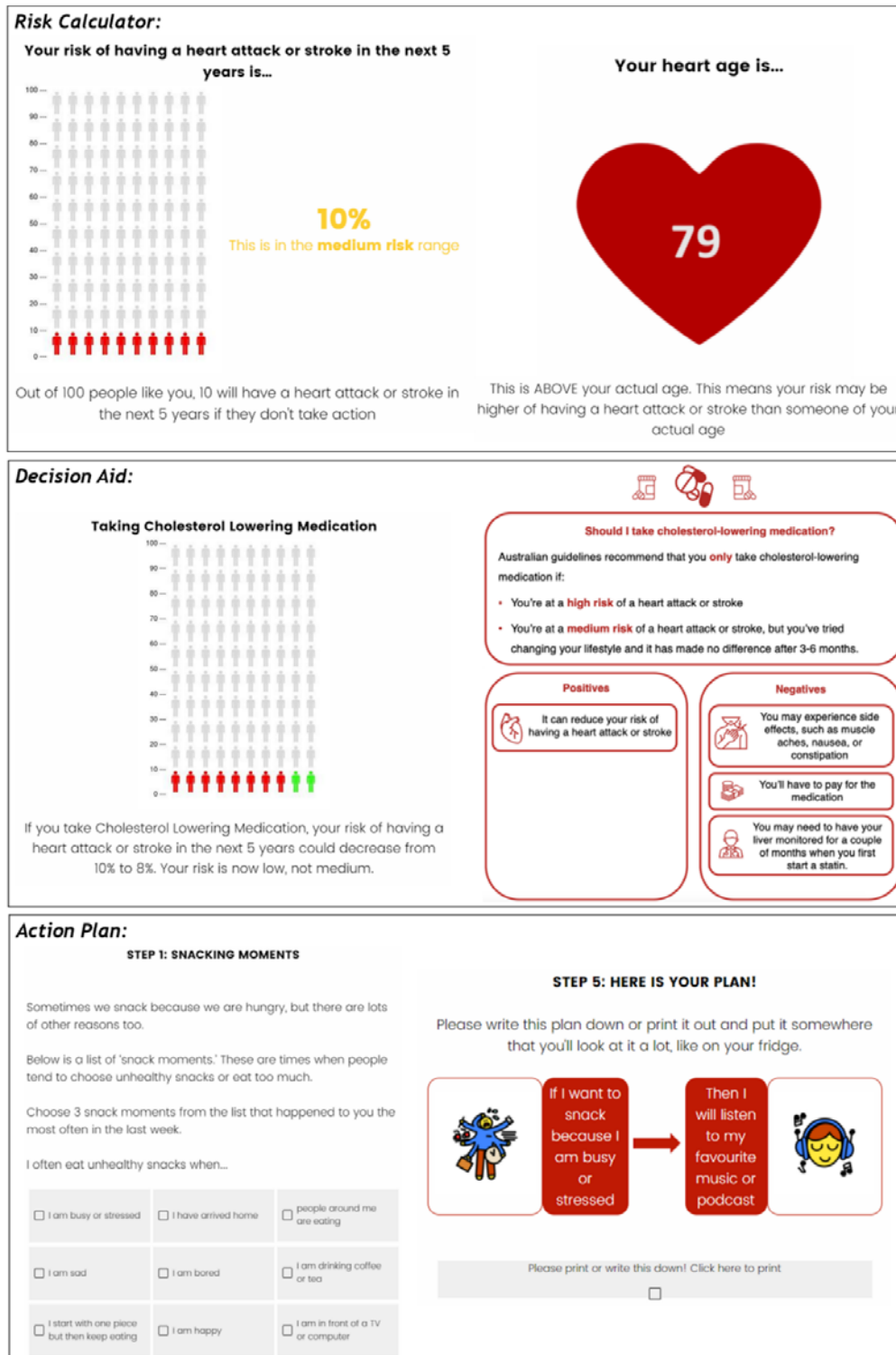


RESULTS

Stage 1

We used the question format and style of the current national heart age calculator as the basis for the risk factor questions in all groups, and also based the heart age presentation on that tool. The CVD risk results and decision aid were presented based on: 1) our existing GP decision aid tool³⁷ (standard decision aid group); 2) a simplified version of the standard decision aid with supporting images (literacy-sensitive decision aid group, see Figure 2); and 3) the current risk calculator from the National Vascular Disease Prevention Alliance⁴¹. See Appendix 1 for example intervention content in each group.

Figure 2: Example risk calculator, decision aid & action plan (literacy-sensitive heart age version)



Stage 2

The CONSORT diagram is shown in Figure 3, and characteristics of all participant groups in the intervention are shown in Table 3. We conducted a soft launch of n=100 participants to check we had an adequate low health literacy sample and adequate follow-up considering COVID-19 disruptions in 2020, before proceeding with the full trial with no changes to the pre-registered method. We recruited 859 participants for the intervention (including the 100 in the soft launch), with a target of 600 at 4 week follow-up, for which we recruited 596. Characteristics were similar between groups for age and gender, but some differences were observed for health literacy (relating to education) and absolute risk (relating to smoking and heart age), so these two factors were controlled for in the analyses. In terms of drop-out, there was no difference in randomised decision aid group ($p=.71$), randomised to heart age shown ($p=.91$), health literacy level ($p=.69$), CVD risk level ($p=.56$), or heart age result ($p=.30$) between those who returned for follow-up and those who did not. Outcomes by trial group are shown in Table 4; and analyses for each of the 3 hypotheses are shown in Tables 5-7.

Figure 3: CONSORT diagram

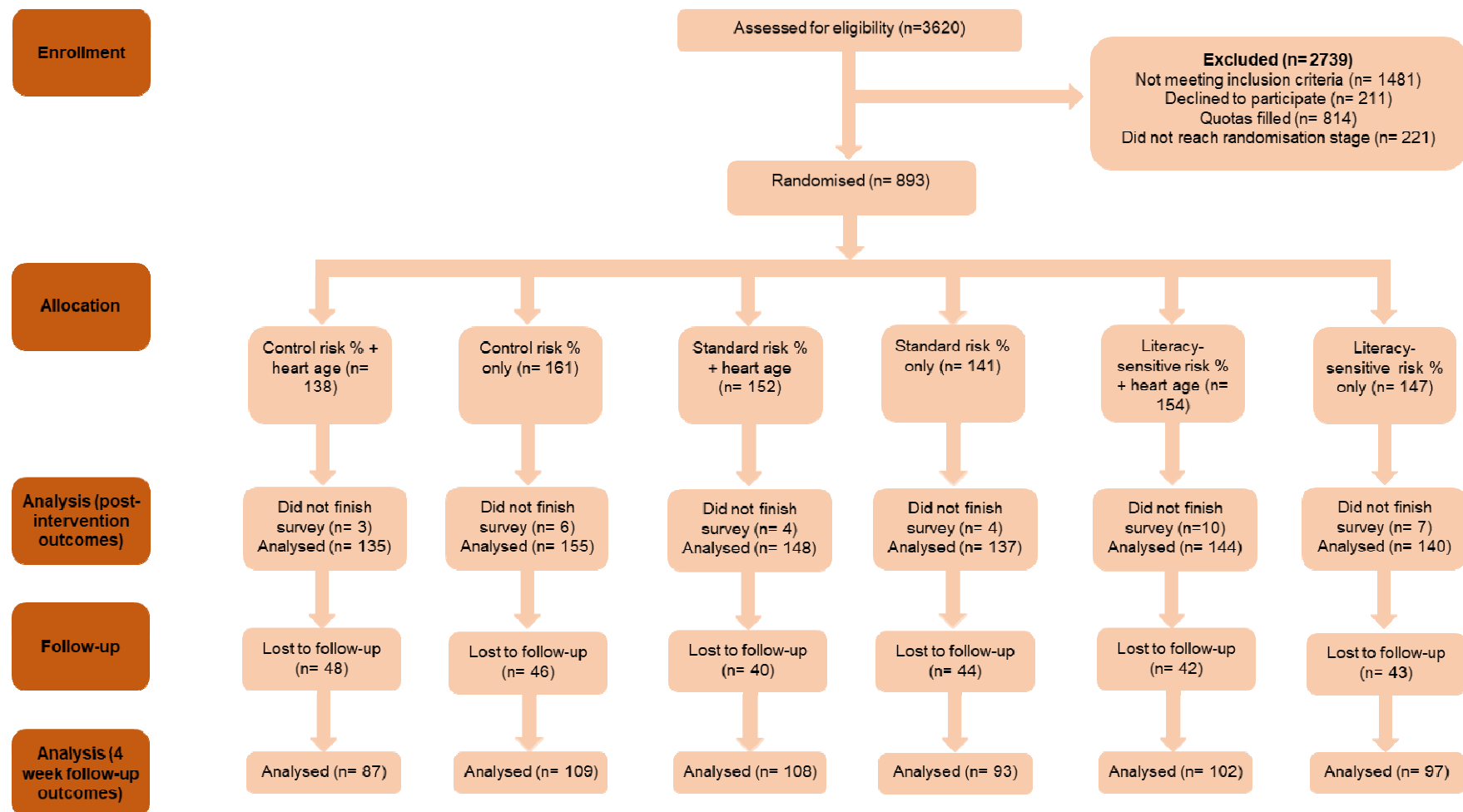


Table 3: Trial participant characteristics by randomised group

| Characteristics | Decision aid (DA) group | | | Heart age group | |
|---|-------------------------|------------------|----------------------------|---------------------|----------------------------|
| | Control (n=290) | Standard (n=285) | Literacy-sensitive (n=284) | Risk % only (n=432) | Risk % + heart age (n=427) |
| Demographics | | | | | |
| Age (years), mean (SD) | 59.9 (8.7) | 59.6 (8.2) | 58.3 (8.7) | 58.8 (8.6) | 59.8 (8.5) |
| Heart age (years), mean (SD) | 60.7 (14.7) | 60.9 (13.1) | 58.5 (13.7) | 58.9 (14.0) | 61.2 (13.7) |
| Male, n (%) | 137 (47.2%) | 147 (51.6%) | 142 (50.0%) | 213 (49.3%) | 213 (49.9%) |
| Female, n (%) | 153 (52.8%) | 138 (48.4%) | 142 (50.0%) | 219 (50.7%) | 214 (50.1%) |
| University degree, n (%) | 149 (51.4%) | 133 (46.7%) | 145 (51.1%) | 218 (50.5%) | 209 (48.9%) |
| Inadequate health literacy, n (%) | 63 (21.7%) | 77 (27.0%) | 66 (23.2%) | 103 (23.8%) | 103 (24.1%) |
| Clinical characteristics | | | | | |
| Knew their cholesterol, n (%) | 41 (14.1%) | 41 (14.4%) | 34 (12.0%) | 59 (13.7%) | 57 (13.3%) |
| Total cholesterol [^] , mean (SD) | 4.9 (1.3) | 4.9 (1.5) | 4.4 (1.4) | 4.6 (1.3) | 4.8 (1.5) |
| HDL cholesterol [^] , mean (SD) | 2.6 (1.3) | 2.6 (1.2) | 2.8 (1.3) | 2.8 (1.3) | 2.6 (1.2) |
| Knew their blood pressure, n (%) | 102 (35.2%) | 106 (37.2%) | 98 (34.5%) | 162 (37.5%) | 144 (33.7%) |
| Systolic blood pressure [^] , mean (SD) | 123.9 (15.1) | 127.0 (14.8) | 124.9 (14.8) | 123.9 (14.7) | 126.8 (15.1) |
| Diastolic blood pressure [^] , mean (SD) | 83.1 (11.7) | 83.3 (12.0) | 82.3 (13.0) | 82.4 (12.7) | 83.5 (11.8) |
| Overweight BMI*, n (%) | 172 (59.3%) | 175 (61.4%) | 161 (56.7%) | 260 (60.2%) | 248 (58.1%) |
| Behaviour + lifestyle characteristics | | | | | |
| Adequate diet*, n (%) | 73 (25.2%) | 75 (26.3%) | 67 (23.6%) | 113 (26.2%) | 102 (23.9%) |
| Adequate exercise*, n (%) | 165 (56.9%) | 150 (52.6%) | 162 (57.0%) | 239 (55.3%) | 238 (55.7%) |
| Smokers, n (%) | 38 (13.1%) | 42 (14.7%) | 35 (12.3%) | 48 (11.1%) | 67 (15.7%) |
| Risk results | | | | | |
| Older heart age [#] , n (%) | 164 (56.6%) | 171 (60.0%) | 153 (53.9%) | 230 (53.2%) | 258 (60.4%) |
| Absolute risk, mean (SD) | 5.3 (4.8) | 5.4 (4.1) | 4.9 (4.1) | 4.9 (4.5) | 5.5 (4.2) |
| Low risk, n (%) | 248 (85.5%) | 235 (82.5%) | 238 (83.8%) | 375 (86.8%) | 346 (81.0%) |
| Medium risk, n (%) | 37 (12.8%) | 44 (15.4%) | 39 (13.7%) | 49 (11.3%) | 71 (16.6%) |
| High risk, n (%) | 5 (1.7%) | 6 (2.1%) | 7 (2.5%) | 8 (1.9%) | 10 (2.3%) |

* overweight BMI > 25; adequate diet = at least 2 servings of fruit and 5 servings of vegetables per day in the past week⁴⁷; adequate physical activity = 3 vigorous sessions per week, 5 moderate sessions per week, or 1–2 vigorous sessions plus 3–4 moderate sessions per week⁴⁶

[^]if known

[#] older heart age = heart age result is higher than chronological age

Table 4: Trial outcomes by randomised group. Data are displayed as mean (standard deviation)

unless otherwise indicated.

| Outcome | Decision aid (DA) group | | | Heart age group | |
|--|-------------------------|----------------|--------------------|-----------------|--------------------|
| | Control | Standard | Literacy-sensitive | Risk % only | Risk % + heart age |
| Post-intervention | (n=290) | (n=285) | (n=284) | (n=432) | (n=427) |
| Intention to change lifestyle, mean (SD) [1=Strongly disagree to 7=Strongly agree] | 4.5 (1.4) | 4.7 (1.2) | 4.6 (1.4) | 4.6 (1.3) | 4.6 (1.4) |
| Intention to take medication, mean (SD) [1=Strongly disagree to 7=Strongly agree] | 2.5 (1.4) | 2.5 (1.4) | 2.5 (1.5) | 2.5 (1.4) | 2.5 (1.4) |
| Intention to take supplements, mean (SD) [1=Strongly disagree to 7=Strongly agree] | 3.2 (1.6) | 3.1 (1.6) | 3.1 (1.6) | 3.1 (1.6) | 3.1 (1.6) |
| Decisional conflict, mean (SD) [4=Yes to all four questions; therefore anything less than 4 indicates decisional conflict] | 3.7 (0.9) | 3.7 (0.8) | 3.7 (0.8) | 3.8 (0.8) | 3.7 (0.9) |
| Positive emotion, mean (SD) [0=None of this feeling to 10=A lot of this feeling] | 6.6 (2.6) | 6.8 (2.3) | 6.8 (2.4) | 7.0 (2.3) | 6.4 (2.5) |
| Negative emotion, mean (SD) [0=None of this feeling to 10=A lot of this feeling] | 2.2 (2.4) | 2.5 (2.4) | 2.5 (2.5) | 2.2 (2.4) | 2.5 (2.5) |
| Credibility, mean (SD) [1=Strongly disagree to 7=Strongly agree] | 5.0 (1.2) | 5.0 (1.1) | 4.9 (1.2) | 5.1 (1.1) | 4.9 (1.2) |
| Gist knowledge of risk percentage post-intervention, n (%) | 256 (88.3%) | 253 (88.8%) | 241 (84.9%) | 379 (87.7%) | 371 (86.9%) |
| Inflated risk, n (%) | 19 (6.6%) | 16 (5.6%) | 22 (7.7%) | 23 (5.3%) | 34 (8.0%) |
| 4 week follow-up (positive differences = more at follow-up) | (n=196) | (n=201) | (n=199) | (n=299) | (n=297) |
| Difference in smoking*, mean (SD) | 0.4 (2.1) | -1.4 (7.5) | 0.2 (3.2) | 0.8 (3.3) | -1.0 (5.7) |
| Difference in moderate exercise*, mean (SD) | 0.03 (2.2) | -0.1 (2.3) | -0.04 (2.3) | -0.1 (2.3) | 0.04 (2.3) |
| Difference in vigorous exercise*, mean (SD) | -0.2 (2.2) | -0.1 (2.1) | -0.1 (2.5) | -0.3 (2.1) | 0.01 (2.4) |
| Adequate exercise^, n (%) | 102 (52.0%) | 103 (51.2%) | 115 (57.8%) | 152 (50.8%) | 169 (56.9%) |
| Difference in whether exercise met adequate levels*, % | -4.9% | -1.4% | 0.8% | -4.5% | 1.2% |
| Difference in daily fruit serves*, mean (SD) | -0.4 (2.4) | -0.2 (2.3) | 0.5 (2.5) | -0.1 (2.7) | 0.01 (2.2) |
| Difference in daily vegetable serves*, mean (SD) | -0.4 (2.6) | -0.2 (2.4) | 0.1 (2.6) | -0.3 (2.6) | -0.1 (2.5) |
| Difference in daily unhealthy snack serves*, mean (SD) | -0.4 (2.2) | -0.3 (2.1) | -0.2 (2.3) | -0.3 (2.2) | -0.4 (2.1) |
| Difference in daily soft drinks*, mean (SD) | 0.03 (1.6) | -0.1 (1.7) | -0.1 (2.0) | 0.1 (1.8) | -0.2 (1.7) |
| Adequate diet^, n(%) | 39 (19.9%) | 50 (24.9%) | 50 (25.1%) | 68 (22.7%) | 71 (23.9%) |
| Difference in whether diet met adequate levels*, % | -5.3% | -1.4% | 1.5% | -3.5% | 0.0% |

| | | | | | |
|---|------------|-------------|-------------|-------------|-------------|
| Seen a doctor in the last 4 weeks, n (%) | 14 (7.1%) | 16 (8.0%) | 23 (11.6%) | 27 (9.0%) | 26 (8.8%) |
| Made an appointment to see a doctor, n (%) | 8 (4.1%) | 7 (3.5%) | 6 (3.0%) | 8 (2.7%) | 13 (4.4%) |
| Called HF helpline in the last 4 weeks, n (%) | 1 (0.5%) | 4 (2.0%) | 3 (1.5%) | 5 (1.7%) | 3 (1.0%) |
| Gist knowledge of heart age at follow up, n (%) | 44 (22.4%) | 57 (28.4%) | 54 (27.1%) | 40 (13.4%) | 115 (38.7%) |
| Verbatim knowledge of heart age at follow up, n (%) | 16 (8.2%) | 11 (5.5%) | 9 (4.5%) | 2 (0.7%) | 34 (11.4%) |
| Gist knowledge of risk percentage at follow up, n (%) | 76 (38.8%) | 108 (53.7%) | 102 (51.3%) | 139 (46.5%) | 147 (49.5%) |
| Verbatim knowledge of risk percentage at follow up, n (%) | 6 (3.1%) | 19 (9.5%) | 14 (7.0%) | 21 (7.0%) | 18 (6.1%) |

*Difference score: follow-up minus pre-intervention; positive = more at follow-up

^ adequate diet = at least 2 servings of fruit and 5 servings of vegetables per day in the past week⁴⁷; adequate physical activity = 3 vigorous sessions per week, 5 moderate sessions per week, or 1–2 vigorous sessions plus 3–4 moderate sessions per week⁴⁶

Post-intervention differences between decision aid groups

Immediately post-intervention, there were no differences between the 3 decision aid groups for the primary outcome of lifestyle intentions, or secondary outcomes of risk perception, credibility, emotional response or decisional conflict. For Hypothesis 1, the combined decision aid groups were no different to the control condition for any outcome (Table 5). For Hypothesis 2, there was no difference between the standard and literacy-sensitive decision aids for any outcome (Table 6). There were significant interactions between decision aid and health literacy for intention to talk to a doctor about medication ($p=0.019$) and emotional response (positive $p=0.010$; negative $p=0.006$). Participants with lower health literacy who received the literacy-sensitive decision aid had a more negative/less positive emotional response and had stronger intentions to see a doctor about medication, compared to the other groups (Table 6).

4 week differences between decision aid groups

At follow-up after 4 weeks, there were no significant differences between the control and decision aid groups for most self-reported behaviours. However, the literacy-sensitive decision aid group had higher fruit consumption compared to both control (difference in predicted counts = 0.69 (95%CI: 0.32 to 1.06); $p<.001$) and the standard decision aid group (difference in predicted counts = 0.48 (95%CI: 0.11 to 0.86); $p=.012$). The decision aid groups were both more likely to know whether their risk was low, medium or high than the control group (literacy-sensitive DA: IRR=1.28 (95%CI: 1.04 to 1.58); $p=.021$; standard DA: IRR=1.41 (95%CI: 1.14 to 1.74); $p=.002$). The standard DA group was more likely to know their exact risk percentage result compared to control (IRR=3.25 (95%CI: 1.31 to 8.07); $p=.011$); see Table 5. There were significant differences between decision aid groups by health literacy levels for self-reported calls to the Heart Foundation helpline ($p<0.001$) and verbatim knowledge of CVD percentage risk at follow up ($p<0.001$). No one with low health literacy reported calling the helpline or remembered their exact CVD risk in the control group. The standard decision

aid increased both outcomes in all health literacy groups, and the literacy-sensitive decision aid increased both outcomes in low and high health literacy groups but not medium (Table 6).

Post-intervention differences between heart age groups

Immediately post-intervention, there were no differences between the two heart age groups for the primary outcome of lifestyle intentions, or secondary outcomes of risk perception or decisional conflict. For Hypothesis 3, the heart age group was less likely to have a positive emotional response (mean difference = -0.56 (95%CI: -0.88, -0.24); $p=.001$), less likely to perceive the message as credible (-0.20 (-0.35, -0.05); $p=.010$), and more likely to know whether their risk was low, medium or high (2.03 (1.33, 3.08); $p=.001$), compared to the percentage risk only group (Table 7). When the heart age result was older, there were significant differences indicating less positive (-0.75 (-1.19, -0.31); $p=.001$) and more negative (0.57 (0.12, 1.02); $p=.014$) emotional responses, lower credibility (-0.29 (-0.49, -0.09); $p=.005$) and higher perceived risk level (2.11 (1.31, 3.39); $p=.002$) when heart age was shown. No such differences were found for those who received the same age or younger results (Table 7).

4 week differences between heart age groups

At 4 week follow-up there were no significant differences between the heart age groups in terms of lifestyle behaviour change, seeing a doctor for a Heart Health Check or gist knowledge of risk level (Table 7). Unsurprisingly, being shown heart age led to greater gist knowledge of heart age (2.90 (2.10, 3.99); $p<.001$) and verbatim knowledge of heart age (18.13 (4.36, 75.48); $p<.001$) compared to the those who weren't shown their heart age, but there was no difference between the heart age and percentage risk only groups for knowledge of percentage risk. Within the heart age group who saw both risk formats, participants were more likely to have verbatim knowledge of their heart age (11%) than their percentage risk (6%) (McNemar's chi-squared test for paired proportions: χ^2

(1)=6.10, $p=.014$, difference in proportions: 5.4%, 95%CI: 0.8% to 10.0%). When the heart age result was older, there were significant differences indicating more vigorous exercise (0.58 (0.09, 1.07); $p=.021$), more vegetable serves (0.57 (0.05, 1.09); $p=.032$), higher chance of meeting guidelines for exercise (1.23 (1.05, 1.45); $p=.010$) and diet (1.48 (1.00, 2.18); $p=.048$), when heart age was shown. When the heart age result was the same or younger than current age, there were significant differences indicating fewer soft drink serves (-0.34 (-0.61, -0.07); $p=.012$), and higher chance of calling the Heart Foundation helpline (12.66 (1.76, 4.03); $p<.001$), when heart age was shown (Table 7).

Table 5: Hypothesis 1: the decision aid groups will improve outcomes versus the control group

| | Outcome | Literacy-sensitive DA vs control Mean difference (95% CI); p-value | Standard DA vs control Mean difference (95% CI); p-value | Main effect p-value |
|---|---|---|---|------------------------|
| Post-intervention | Intention to change lifestyle | 0.07 (-0.15, 0.29); p=.52 | 0.17 (-0.05, 0.39); p=.12 | .30 |
| | Intention to talk to doctor about medication | 0.01 (-0.21, 0.24); p=.90 | 0.00 (-0.23, 0.22); p=.97 | .99 |
| | Intention to take supplements | -0.10 (-0.36, 0.16); p=.43 | -0.09 (-0.34, 0.17); p=.52 | .70 |
| | Decisional conflict + | 1.12 (0.72, 1.73); p=.62 | 0.98 (0.63, 1.54); p=.93 | .82 |
| | Positive emotion | 0.16 (-0.23, 0.55); p=.43 | 0.31 (-0.08, 0.70); p=.12 | .29 |
| | Negative emotion | 0.28 (-0.11, 0.68); p=.16 | 0.20 (-0.19, 0.60); p=.31 | .34 |
| | Credibility | -0.12 (-0.30, 0.07); p=.22 | 0.01 (-0.18, 0.19); p=.95 | .34 |
| | Gist knowledge of risk percentage post-intervention # | 1.22 (0.74, 2.02); p=.44 | 1.05 (0.63, 1.73); p=.85 | .72 |
| | Inflated risk + | 1.10 (0.63, 1.92); p=.74 | 0.74 (0.39, 1.38); p=.34 | .42 |
| Follow-up (after 4 weeks, controlling for pre-intervention) | Daily smoking (no. cigarettes) * | 0.41 (-2.34, 3.16); p=.77 | -1.48 (-4.17, 1.20); p=.28 | .29 |
| | Weekly vigorous exercise sessions * | 0.23 (-0.15, 0.62); p=.24 | 0.00 (-0.38, 0.38); p=.99 | .39 |
| | Weekly moderate exercise sessions * | 0.03 (-0.36, 0.42); p=.89 | -0.03 (-0.42, 0.36); p=.87 | .95 |
| | Whether exercise met adequate levels + | 1.10 (0.95, 1.28); p=.19 | 1.04 (0.89, 1.21); p=.64 | .41 |
| | Daily fruit serves * | 0.69 (0.32, 1.06); p<.001 | 0.21 (-0.13, 0.55); p=.23 | <.001 |
| | Daily vegetable serves * | 0.38 (-0.03, 0.78); p=.07 | 0.04 (-0.36, 0.43); p=.85 | .13 |
| | Daily unhealthy snack serves * | 0.11 (-0.17, 0.40); p=.43 | 0.02 (-0.26, 0.31); p=.87 | .71 |
| | Daily soft drink serves * | 0.12 (-0.10, 0.35); p=.28 | 0.05 (-0.17, 0.27); p=.65 | .55 |
| | Whether diet met adequate levels + | 1.23 (0.87, 1.74); p=.23 | 1.16 (0.83, 1.62); p=.37 | .48 |
| Follow-up only (after 4 weeks) | Has seen a doctor in the last 4 weeks+ | 1.60 (0.85, 3.02); p=.14 | 1.04 (0.52, 2.07); p=.92 | .23 |
| | Intends to see a doctor at follow up + | 0.75 (0.27, 2.10); p=.58 | 0.86 (0.31, 2.41); p=.78 | .86 |
| | Has called HF helpline in the last 4 weeks + | 3.00 (0.31, 29.07); p=.34 | 3.81 (0.45, 32.25); p=.22 | .47 |
| | Gist knowledge of heart age at follow up + | 1.12 (0.80, 1.56); p=.51 | 1.16 (0.84, 1.61); p=.36 | .65 |
| | Verbatim knowledge of heart age at follow up + | 0.47 (0.22, 1.03); p=.06 | 0.58 (0.28, 1.20); p=.14 | .12 |
| | Gist knowledge of risk percentage at follow up + | 1.28 (1.04, 1.58); p=.021 | 1.41 (1.14, 1.74); p=.002 | .006 |
| | Verbatim knowledge of risk percentage at follow up + | 2.34 (0.91, 6.05); p=.08 | 3.25 (1.31, 8.07); p=.011 | .039 |

+ analysis by modified Poisson regression, data shown as **incidence rate ratios**

analysis by ordered logistic regression, data shown as odds ratio of being in next highest (relative to group shown heart foundation info only)

* analysis by negative binomial regression, data shown as **differences in predicted counts**

Table 6: Hypothesis 2: the literacy-sensitive decision aid will improve outcomes versus the standard decision aid regardless of health literacy level

| | Outcome | Standard DA (vs literacy-sensitive) Estimated difference (95%CI); p-value | NVS_score x Group interaction p-value |
|--|---|--|--|
| Post-intervention) | Intention to change lifestyle | 0.10 (-0.12, 0.32); p=.37 | .22 |
| | Intention to talk to doctor about medication | -0.02 (-0.24, 0.21); p=.87 | .019 |
| | Intention to take supplements | 0.02 (-0.24, 0.28); p=.90 | .10 |
| | Decisional conflict + | 0.88 (0.57, 1.36); p=.56 | .53 |
| | Positive emotion | 0.16 (-0.24, 0.55); p=.44 | .010 |
| | Negative emotion | -0.08 (-0.48, 0.32); p=.69 | .006 |
| | Credibility | 0.12 (-0.06, 0.31); p=.20 | .11 |
| | Gist knowledge of risk percentage post-intervention # | 0.86 (0.52, 1.41); p=.55 | .007 |
| | Inflated risk perception (above actual level) + | 0.70 (0.37, 1.23); p=.20 | .72 |
| Follow-up (after 4 weeks, controlling for pre-intervention) | Daily smoking (no. cigarettes) * | -1.90 (-4.33, 0.53); p=.13 | .90 |
| | Weekly vigorous exercise sessions * | -0.23 (-0.62, 0.16); p=.24 | .20 |
| | Weekly moderate exercise sessions * | -0.06 (-0.45, 0.32); p=.76 | .50 |
| | Whether exercise met adequate levels + | 0.94 (0.81, 1.09); p=.43 | .35 |
| | Daily fruit serves * | -0.48 (-0.86, -0.11); p=.012 | .15 |
| | Daily vegetable serves * | -0.34 (-0.74, 0.06); p=.10 | .10 |
| | Daily unhealthy snack serves * | -0.09 (-0.38, 0.20); p=.53 | .97 |
| | Daily soft drink serves * | -0.07 (-0.30, 0.16); p=.53 | .77 |
| | Whether diet met adequate levels + | 0.94 (0.69, 1.28); p=.71 | .90 |
| Follow-up (after 4 weeks) | Has seen a doctor in the last 4 weeks+ | 0.65 (0.35, 1.19); p=.16 | .75 |
| | Intends to see a doctor at follow up + | 1.15 (0.39, 3.36); p=.80 | Not tested (insufficient variability) |
| | Has called HF helpline in the last 4 weeks+ | 1.27 (0.26, 6.09); p=.77 | <.001 |
| | Gist knowledge of heart age at follow up + | 1.04 (0.77, 1.41); p=.81 | .61 |
| | Verbatim knowledge of heart age at follow up + | 1.24 (0.53, 2.89); p=.62 | .27 |
| | Gist knowledge of risk percentage at follow up + | 1.10 (0.92, 1.30); p=.29 | .83 |
| | Verbatim knowledge of risk percentage at follow up + | 1.39 (0.71, 2.69); p=.33 | <.001 |

+ analysis by modified Poisson regression, data shown as **incidence rate ratios**

analysis by ordered logistic regression, data shown as odds ratio of being in next highest (odds in standard, relative to low HL)

* analysis by negative binomial regression, data shown as **differences in predicted counts**

Table 7: Hypothesis 3: adding heart age to percentage risk will improve outcomes versus percentage risk only

| | Outcome | Heart age shown vs not shown | | |
|---|---|---------------------------------------|-------------------------------------|-------------------------------------|
| | | Across all participants | Older heart age result | Same/younger heart age result |
| Post-intervention) | Intention to change lifestyle | -0.04 (-0.22, 0.14); p=.64 | -0.11 (-0.34, 0.13); p=.36 | 0.02 (-0.25, 0.30); p=.87 |
| | Intention to take medication | .04 (-0.15, 0.22); p=.70 | 0.11 (-0.13, 0.36); p=.37 | -0.14 (-0.41, 0.13); p=.31 |
| | Intention to take supplements | 0.00 (-0.21, 0.21); p=.99 | 0.07 (-0.21, 0.35); p=.63 | -0.14 (-0.47, 0.19); p=.41 |
| | Decisional conflict + (%) | 1.27 (0.89, 1.83); p=.19 | 1.08 (0.72, 1.62); p=.71 | 1.72 (0.81, 3.67); p=.16 |
| | Positive emotion | -0.56 (-0.88, -0.24); p=.001 | -0.75 (-1.19, -0.31); p=.001 | -0.25 (-0.70, 0.20); p=.28 |
| | Negative emotion | 0.26 (-0.06, 0.58); p=.12 | 0.57 (0.12, 1.02); p=.014 | -0.27 (-0.71, 0.17); p=.23 |
| | Credibility | -0.20 (-0.35, -0.05); p=.010 | -0.29 (-0.49, -0.09); p=.005 | -0.06 (-0.29, 0.17); p=.60 |
| | Gist knowledge of risk percentage post-intervention # | 2.03 (1.33, 3.08); p=.001 | 2.12 (1.32, 3.41); p=.002 | 1.60 (0.58, 4.37); p=.36 |
| | Inflated risk + (%) | 1.60 (0.98, 2.61); p=.058 | 1.70 (0.93, 3.13); p=.086 | 1.38 (0.57, 3.36); p=.47 |
| Follow-up (after 4 weeks, controlling for pre-intervention) | Daily smoking (no. cigarettes) * | -0.77 (-2.93, 1.40); p=.49 | Not estimated (n=4 not shown) | -0.66 (-2.94, 1.61); p=.57 |
| | Weekly vigorous exercise sessions * | 0.29 (-0.02, 0.60); p=.07 | 0.58 (0.09, 1.07); p=.021 | 0.04 (-0.37, 0.44); p=.85 |
| | Weekly moderate exercise sessions * | 0.05 (-0.26, 0.37); p=.74 | 0.45 (-0.01, 0.91); p=.056 | -0.26 (-0.72, 0.20); p=.27 |
| | Whether exercise met adequate levels + | 1.16 (0.99, 1.26); p=.08 | 1.23 (1.05, 1.45); p=.010 | 1.03 (0.86, 1.24); p=.74 |
| | Daily fruit serves * | 0.02 (-0.28, 0.31); p=.92 | 0.42 (-0.06, 0.89); p=.084 | -0.26 (-0.63, 0.11); p=.17 |
| | Daily vegetable serves * | 0.30 (-0.02, 0.63); p=.07 | 0.57 (0.05, 1.09); p=.032 | -0.14 (-0.28, 0.56); p=.51 |
| | Daily unhealthy snack serves * | -0.05 (-0.28, 0.18); p=.68 | 0.22 (-0.15, 0.58); p=.25 | -0.28 (-0.58, 0.02); p=.067 |
| | Daily soft drink serves * | -0.14 (-0.33, 0.04); p=.13 | 0.03 (-0.22, 0.27); p=.83 | -0.34 (-0.61, -0.07); p=.012 |
| | Whether diet met adequate levels + | 1.14 (0.87, 1.50); p=.34 | 1.48 (1.00, 2.18); p=.048 | 0.95 (0.66, 1.38); p=.79 |
| Follow-up (after 4 weeks) | Has seen a doctor in the last 4 weeks+ | 0.99 (0.60, 1.63); p=.96 | 0.81 (0.37, 1.80); p=.61 | 1.15 (0.58, 2.26); p=.69 |
| | Intends to see a doctor at follow up + | 1.61 (0.67, 3.84); p=.29 | 0.67 (0.17, 0.27); p=.58 | 4.17 (0.90, 19.32); p=.068 |
| | Has called HF helpline in the last 4 weeks+ | 0.65 (0.17, 2.53); p=.54 | 1.23 (0.25, 6.03); p=.80 | 2.66 (1.76, 4.03); p<.001 |
| | Gist knowledge of heart age at follow up + | 2.90 (2.10, 3.99); p<.001 | 3.38 (2.05, 5.55); p<.001 | 6.67 (1.50, 32.41); p=.013 |
| | Verbatim knowledge of heart age at follow up + | 18.13 (4.36, 75.48); p<.001 | Not estimated (n=2 not shown) | Not estimated (n=2 not shown) |
| | Gist knowledge of risk percentage at follow up + | 1.11 (0.95, 1.30); p=.20 | 1.09 (0.91, 1.29); p=.35 | 1.16 (0.87, 1.55); p=.31 |
| | Verbatim knowledge of risk percentage at follow up + | 0.82 (0.44, 1.50); p=.52 | 1.02 (0.40, 2.57); p=.97 | 0.68 (0.31, 1.52); p=.35 |

+ analysis by modified Poisson regression, data shown as **incidence rate ratios**; # analysis by ordered logistic regression, data shown as odds ratio of being in next highest (odds in heart age, relative to not shown); * analysis by negative binomial regression, data shown as **differences in predicted counts**; & Unstable estimate: 5/299 individuals not shown heart age used helpline, compared to 3/297 shown heart age.

Stage 3

As part of the follow up survey, participants were asked if they'd like to be interviewed about the risk calculator. Twenty-seven of those indicated that they would. From this pool, 20 were selected to represent a range of ages, genders, risk levels, and health literacy. The interviews were done in four stages so that any user feedback from the interviews could be discussed amongst the team (CB, CAB and JA) and then implemented into the calculator for the next interviews, in an iterative process. The issues addressed in each round of interviews are shown in Appendix 2.

DISCUSSION

We used both a mixed methods development and evaluation process to produce a CVD decision aid that is effective for improving verbatim and gist knowledge of CVD risk and fruit consumption after 4 weeks. The resulting intervention is a scalable ehealth tool suitable for people with varying health literacy. This consumer tool will supplement a GP version to use within consultations^{36,37}, providing GPs with a clear action for their patients to follow up when lifestyle change is recommended.

The paper provides an example of how to apply literacy-sensitive design principles to evidence-based decision making and behaviour change tools. The results show literacy-sensitive decision aids can support people with lower health literacy to make informed decisions, while still being suitable for the general population. A recent review of decision aids for people with lower health literacy^{53,54} showed that decision aids that used health literacy design strategies led to improved knowledge, decisional conflict and decision making outcomes. Further, decision aids that used explicit strategies to reduce cognitive burden showed greater improvements knowledge for people with low health literacy and from disadvantaged backgrounds⁵⁴. The review highlighted the need for more

consideration of health literacy in decision aid development. This study addresses the findings in the context of CVD prevention for the first time.

We observed a number of interactions with health literacy, showing the importance of considering this as a covariate when investigating shared decision making and behaviour change outcomes. The literacy-sensitive version of the decision aid produced more negative emotional responses and greater intentions to speak to a doctor about medication options to reduce CVD risk, amongst those with lower health literacy. This may reflect risk and choice awareness in this group, if they had not previously considered themselves to have risk factors for heart disease that could be addressed with preventive medication. As this sample was predominantly low risk, we would not want a decision aid to lead to greater actual medication uptake in this group, but speaking with a doctor about risk and how to reduce it may be a positive outcome in line with guidelines to assess risk in this age group¹. We replicated previous decision aid studies in finding increased knowledge of risk amongst the decision aid groups compared to control³⁵. We also replicated our previous finding that a literacy-sensitive action plan can improve diet outcomes across different levels of health literacy, although this was more marked for people with low health literacy^{29,55}.

This study also replicated a number of heart age effects found in reviews of previous research, in that it leads to a more negative emotional response, increased gist and verbatim knowledge of heart age but not percentage risk, and reduced credibility, but is neutral for lifestyle change overall^{56,57}. Our subgroup analyses suggest that more nuanced study designs may be required to better understand the effects of heart age. Firstly, amongst those who were shown their heart age, gist knowledge of percentage risk was initially improved, but after 4 weeks gist and verbatim knowledge were higher for heart age than for percentage risk. Previous studies have shown that people receiving an older heart age may react defensively and focus on other information, such as a low

short-term risk level, which in turn may reduce credibility of the risk result^{24,58}. Analyses of people who received an older heart age result suggests it may be useful as a marketing tool to get attention and initiate behaviour change, but knowledge of heart age did not translate to knowledge of risk. For the intended purpose of a decision aid to be used in a clinical context, the focus needs to be on validated risk results to make informed decisions about medication. For this reason, we made the decision to use the non-heart age version of the literacy-sensitive decision aid for future research in general practice. However, online heart age tools could incorporate decision aid and action plan elements with no detrimental effects. Future trials need to be designed differently to isolate older heart age results and follow-up behaviour over time. In considering how to power such trials, researchers will need to consider how the specific heart age tool they are using is calibrated for the intended population (e.g. ~50% older in our sample using NZ method versus ~80% in Australian/UK HF tool^{23,24}). The primary outcome also needs to be carefully considered. Most heart age research has been done with a primary outcome of immediate lifestyle change intentions, where we found no differences. More research could be done to verify the self-reported behaviour change amongst people receiving older heart age results we observed after 4 weeks, using more objective measures such as pedometers.

The end user interviews were helpful for improving simple navigation and wording issues in the literacy-sensitive version of the decision aid, but there were some larger issues that cannot be resolved in an online tool. Most users did not know their blood pressure or cholesterol results, but even if they had been assessed recently, they had difficulty understanding where the different numbers should be entered. This was particularly difficult for cholesterol results in pathology test reports. We will therefore test the final revised tool in clinical practice to address the issue of unknown blood pressure and cholesterol which reduces the accuracy, and limit display of options in line with current medication guidelines.

Strengths and limitations

A major strength of this study is that we were able to recruit a large, diverse sample in terms of health literacy and risk results. We had sufficient follow-up to run the study per protocol despite COVID-19 disruptions, and observed no difference in dropouts for key variables. A limitation is that the online panel sample may not be representative of the general population, and may better reflect users of online heart age tools than patients presenting to primary care for CVD risk assessment. Different countries use also different CVD risk models/heart age algorithms, which may affect the results given the differences we observed in the older heart age sample. Finally, we used validated outcomes where possible, but behaviour change was self-reported. Future research on heart age could consider using objective measures over time.

Conclusion

This study shows the value of combining health literacy-sensitive design with best practice risk communication and behaviour change tools. Although aimed at addressing the needs of people with lower health literacy, this approach improved knowledge of CVD risk and heart age, and behaviour, in a sample with varying health literacy levels. The role of heart age remains somewhat unclear, with both advantages and disadvantages, but no clear evidence of an effect on lifestyle change intentions or behaviour overall. Further research should investigate implementation pathways for integrating such consumer tools with clinical practice, and distinguish between older and younger heart age results.

REFERENCES

1. NVDPA. *Guidelines for the Management of Absolute Cardiovascular Disease Risk*. Approved by the National Health and Medical Research Council; 2012.
2. Deanfield J, Sattar N, Simpson I, et al. Joint British Societies' consensus recommendations for the prevention of cardiovascular disease (JBS3). *Heart*. 2014;100:1-67. doi:10.1136/heartjnl-2014-305693
3. National Vascular Disease Prevention Alliance. *Guidelines for the Assessment of Absolute Cardiovascular Disease Risk: Approved by the National Health and Medical Research Council*; 2009.
4. Hippisley-Cox J, Coupland C, Brindle P. Development and validation of QRISK3 risk prediction algorithms to estimate future risk of cardiovascular disease: Prospective cohort study. *BMJ*. 2017;357. doi:10.1136/bmj.j2099
5. Whelton PK, Carey RM, Aronow WS, et al. 2017 ACC/AHA/AAPA/ABC/ACPM/AGS/APhA/ASH/ASPC/NMA/PCNA Guideline for the Prevention, Detection, Evaluation, and Management of High Blood Pressure in Adults: A Report of the American College of Cardiology/American Heart Association Task Force on Clinical Practice Guidelines. *J Am Coll Cardiol*. 2018;71(19):e127-e248. doi:10.1016/j.jacc.2017.11.006
6. Cobiac LJ, Magnus A, Barendregt JJ, Carter R, Vos T. Improving the cost-effectiveness of cardiovascular disease prevention in Australia: a modelling study. *BMC Public Health*. 2012;12(1):398. doi:10.1186/1471-2458-12-398
7. Banks E, Crouch SR, Korda RJ, et al. Absolute risk of cardiovascular disease events, and blood pressure-and lipid-lowering therapy in Australia. *Med J Aust*. 2016;204(8):320.e1-320.e8. doi:10.5694/mja15.01004
8. Hobbs FDR, Jukema JW, Da Silva PM, McCormack T, Catapano AL. Barriers to cardiovascular

- disease risk scoring and primary prevention in Europe. *QJM*. 2010;103(10):727-739.
doi:10.1093/qjmed/hcq122
9. Sposito AC, Ramires JAF, Jukema JW, et al. Physicians' attitudes and adherence to use of risk scores for primary prevention of cardiovascular disease: cross-sectional survey in three world regions. *Curr Med Res Opin*. 2009;25(5):1171-1178. doi:doi:10.1185/03007990902846423
10. Gupta R, Stocks NP, Broadbent J. Cardiovascular Risk Assessment in Australian General Practice. *Aust Fam Physician*. 2009;38(5):364-368. Accessed June 3, 2021.
<https://search.informit.org/doi/abs/10.3316/informit.772330379209760>
11. Gupta M, Singh N, Tsigoulis M, et al. Perceptions of Canadian Primary Care Physicians Towards Cardiovascular Risk Assessment and Lipid Management. *Can J Cardiol*. 2012;28(1):14-19. doi:10.1016/j.cjca.2011.09.014
12. Montori VM, Brito JP, Ting HH. Patient-Centered and Practical Application of New High Cholesterol Guidelines to Prevent Cardiovascular Disease. *JAMA*. 2014;311(5):465-466.
doi:10.1001/JAMA.2014.110
13. Editorial. Statins for millions more? *Lancet*. 2014;383(9918):669. doi:10.1016/S0140-6736(14)60240-3
14. Goldacre BM. Statins are a mess: we need better data, and shared decision making. *BMJ*. 2014;348:g3306.
15. Australian Bureau of Statistics. *Health Literacy, Australia. Cat. No. 4233.0*. Canberra, Australia; 2006.
16. Kutner M, Greenburg E, Jin Y, Paulsen C. *The Health Literacy of America's Adults: Results from the 2003 National Assessment of Adult Literacy*. Washington, DC: National Center for Education Statistics; 2006.
17. World Health Organisation. *Health Literacy: The Solid Facts*. Denmark, Copenhagen: WHO

Regional Office for Europe; 2013.

18. Berkman ND, Sheridan SL, Donahue KE, Halpern DJ, Crotty K. Low health literacy and health outcomes: An updated systematic review. *Ann Intern Med*. 2011;155(2):97-107.
doi:10.7326/0003-4819-155-2-201107190-00005
19. Cheng C, Dunn M. Health literacy and the Internet: A study on the readability of Australian online health information. *Aust N Z J Public Health*. 2015;39(4):309-314. doi:10.1111/1753-6405.12341
20. SA Health. Tools for promoting health literacy: Assessing Readability. Government of South Australia. Published 2013. Accessed September 17, 2021.
<https://www.sahealth.sa.gov.au/wps/wcm/connect/fcb907004e455125ab8eaf8ba24f3db9/HLT-AssessingReability-T7-PHCS-SQ20130118.pdf?MOD=AJPERES&CACHEID=ROOTWORKSPACE-fcb907004e455125ab8eaf8ba24f3db9-nKKxi3l>
21. Bonner C, Bell K, Jansen J, et al. Should heart age calculators be used alongside absolute cardiovascular disease risk assessment?(Report). *BMC Cardiovasc Disord*. 2018;18(1).
doi:10.1186/s12872-018-0760-1
22. Neufingerl N, Cobain MR, Newson RS. Web-based self-assessment health tools: who are the users and what is the impact of missing input information? Neufingerl N, ed. *J Med Internet Res*. 2014;16(9):e215-e215. doi:10.2196/jmir.3146
23. Patel RS, Lagord C, Waterall J, Moth M, Knapton M, Deanfield JE. Online self-assessment of cardiovascular risk using the Joint British Societies (JBS3)-derived heart age tool: a descriptive study. *BMJ Open*. 2016;6(9). doi:10.1136/bmjopen-2016-011511
24. Bonner C, Raffoul N, Battaglia T, Mitchell JA, Batcup C, Stavreski B. Experiences of a national web-based heart age calculator for cardiovascular disease prevention: User characteristics,

- heart age results, and behavior change survey. *J Med Internet Res*. 2020;22(8):e19028.
doi:10.2196/19028
25. Bonner C, Fajardo MA, Hui S, Stubbs R, Trevena L. Clinical Validity, Understandability, and Actionability of Online Cardiovascular Disease Risk Calculators: Systematic Review. *J Med Internet Res*. 2018;20(2). doi:10.2196/jmir.8538
26. Bonner C, Patel P, Fajardo MA, Zhuang R, Trevena L. Online decision aids for primary cardiovascular disease prevention: Systematic search, evaluation of quality and suitability for low health literacy patients. *BMJ Open*. 2019;9(3):e025173. doi:10.1136/bmjopen-2018-025173
27. Smith SK, Trevena L, Simpson JM, Barratt A, Nutbeam D, McCaffery KJ. A decision aid to support informed choices about bowel cancer screening among adults with low education: Randomised controlled trial. *BMJ*. 2010;341(7780):977. doi:10.1136/bmj.c5370
28. Agency for Healthcare Research and Quality, Rockville M. *Health Literacy Universal Precautions Toolkit*. 2nd ed. Rockville, MD; 2015.
29. Ayre J, Bonner C, Cvejic E, Mccaffery K. Randomized trial of planning tools to reduce unhealthy snacking: Implications for health literacy. *PLoS One*. 2019;14(1):e0209863. doi:10.1371/journal.pone.0209863
30. Bonner C, McKinn S, Lau A, et al. Heuristics and biases in cardiovascular disease prevention: How can we improve communication about risk, benefits and harms? *Patient Educ Couns*. 2018;101(5):843-853. doi:10.1016/j.pec.2017.12.003
31. Trevena LJ, Zikmund-Fisher BJ, Edwards A, et al. Presenting quantitative information about decision outcomes: A risk communication primer for patient decision aid developers. *BMC Med Inform Decis Mak*. 2013;13(SUPPL. 2):1-15. doi:10.1186/1472-6947-13-S2-S7
32. Bonner C, Trevena LJ, Gaissmaier W, et al. Current Best Practice for Presenting Probabilities in

- Patient Decision Aids: Fundamental Principles: *Med Decis Mak*. Published online March 4, 2021;1-13. doi:10.1177/0272989X21996328
33. Trevena LJ, Bonner C, Okan Y, et al. Current Challenges When Using Numbers in Patient Decision Aids: Advanced Concepts: <https://doi.org/10.1177/0272989X21996342>. Published online March 4, 2021. doi:10.1177/0272989X21996342
34. Juraskova I, Butow P, Bonner C, et al. Improving decision making about clinical trial participation-a randomised controlled trial of a decision aid for women considering participation in the IBIS-II breast cancer prevention trial. *Br J Cancer*. 2014;111(1):1-7. doi:10.1038/bjc.2014.144
35. Stacey D, Légaré F, Lewis K, et al. Decision aids for people facing health treatment or screening decisions. *Cochrane Database Syst Rev*. 2017;4(4). doi:10.1002/14651858.CD001431.pub5
36. Bonner C, Fajardo MA, Doust J, Mccaffery K, Trevena L. Implementing cardiovascular disease prevention guidelines to translate evidence-based medicine and shared decision making into general practice: theory-based intervention development, qualitative piloting and quantitative feasibility. *Implement Sci*. 2019;14(1):86. doi:10.1186/s13012-019-0927-x
37. Sydney UO. CHAT-GP: improving communication about heart disease risk in general practice. Published 2017. Accessed July 19, 2021. <https://auscvdrisk.com.au/>
38. Wells S, Kerr A, Eadie S, Wiltshire C, Jackson R. "Your heart forecast": A new approach for describing and communicating cardiovascular risk? *Heart*. 2010;96(9):708-713. doi:10.1136/hrt.2009.191320
39. Armitage CJ. A Volitional Help Sheet to Encourage Smoking Cessation: A Randomized Exploratory Trial. *Heal Psychol*. 2008;27(5):557-566. doi:10.1037/0278-6133.27.5.557
40. Armitage CJ, Arden MA. A volitional help sheet to increase physical activity in people with low

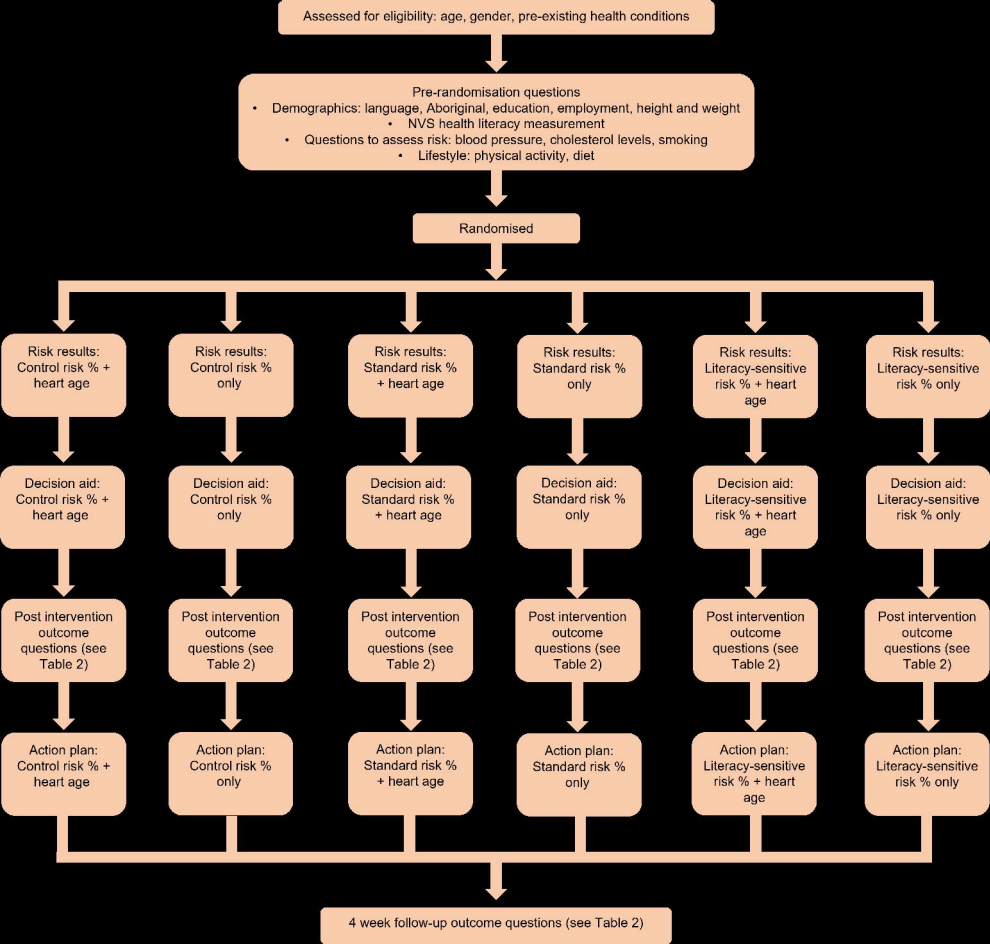
- socioeconomic status: A randomised exploratory trial. *Psychol Health*. 2010;25(10):1129-1145. doi:10.1080/08870440903121638
41. National Vascular Disease Prevention Alliance. Australian absolute cardiovascular disease risk calculator. Published 2012. Accessed July 19, 2021. <https://www.cvdcheck.org.au/>
42. Physical Activity and Exercise. The Heart Foundation. Accessed August 31, 2021. <https://www.heartfoundation.org.au/Heart-health-education/physical-activity-and-exercise>
43. Smoking and your heart. The Heart Foundation. Accessed August 31, 2021. <https://www.heartfoundation.org.au/Heart-health-education/Smoking-and-your-heart>
44. Healthy Eating to Protect Your Heart. The Heart Foundation. Accessed August 31, 2021. <https://www.heartfoundation.org.au/heart-health-education/healthy-eating>
45. Armitage C, Conner M. Efficacy of the theory of planned behaviour: a meta-analytic review. *Brit J Soc Psychol*. 2001;40:471-499.
46. Smith BJ, Marshall AL, Huang N. Screening for Physical Activity in Family Practice: Evaluation of Two Brief Assessment Tools. *Am J Prev Med*. 2005;29(4):256-264. doi:10.1016/J.AMEPRE.2005.07.005
47. O'Hara BJ, Phongsavan P, Eakin EG, et al. Effectiveness of Australia's Get Healthy Information and Coaching Service®: maintenance of self-reported anthropometric and behavioural changes after program completion. *BMC Public Heal* 2013 131. 2013;13(1):1-14. doi:10.1186/1471-2458-13-175
48. Catellier JRA, Yang ZJ. Trust and affect: how do they impact risk information seeking in a health context? <http://dx.doi.org/101080/136698772012686048>. 2012;15(8):897-911. doi:10.1080/13669877.2012.686048
49. Scherer LD, Ubel PA, McClure J, et al. Belief in numbers: When and why women disbelieve tailored breast cancer risk statistics. *Patient Educ Couns*. 2013;92(2):253-259.

doi:10.1016/J.PEC.2013.03.016

50. Légaré F, Kearing S, Clay K, et al. Are you SURE? Assessing patient decisional conflict with a 4-item screening test. *Can Fam Physician*. 2010;56(8):e308. Accessed September 15, 2020.
[/pmc/articles/PMC2920798/?report=abstract](#)
51. Powers BJ, Trinh J V., Bosworth HB. Can This Patient Read and Understand Written Health Information? *JAMA*. 2010;304(1):76-84. doi:10.1001/JAMA.2010.896
52. Weiss BD, Mays MZ, Martz W, et al. Quick Assessment of Literacy in Primary Care: The Newest Vital Sign. *Ann Fam Med*. 2005;3(6):514-522. doi:10.1370/AFM.405
53. Muscat DM, Smith J, Mac O, et al. Addressing Health Literacy in Patient Decision Aids: An Update from the International Patient Decision Aid Standards:
<https://doi.org/101177/0272989X211011101>. Published online May 29, 2021.
doi:10.1177/0272989X211011101
54. Yen RW, Smith J, Engel J, et al. A Systematic Review and Meta-Analysis of Patient Decision Aids for Socially Disadvantaged Populations: Update from the International Patient Decision Aid Standards (IDPAS): <https://doi.org/101177/0272989X211020317>. Published online June 21, 2021:0272989X2110203. doi:10.1177/0272989X211020317
55. Ayre J, Cvejic E, Bonner C, Turner RM, Walter SD, McCaffery KJ. Effects of health literacy, screening, and participant choice on action plans for reducing unhealthy snacking in Australia: A randomised controlled trial. *PLOS Med*. 2020;17(11):e1003409.
doi:10.1371/JOURNAL.PMED.1003409
56. Kulendrarajah B, Grey A, Nunan D. How effective are “age” tools at changing patient behaviour? A rapid review. *BMJ Evidence-Based Med*. 2020;25(2):68-72.
doi:10.1136/bmjebm-2019-111244
57. Bonner C, Batcup C, Cornell S, et al. Risk Communication for Cardiovascular Disease

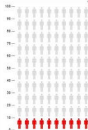
Prevention: Systematic Review of the Effect of “Heart Age” on Psychological, Behavioural and Clinical Outcomes. *Soc Med Decis Mak 42nd Annu Meet*. Published online 2021. Accessed July 20, 2021. <https://smdm.confex.com/smdm/2020/meetingapp.cgi/Paper/13592>

58. Bonner C, Jansen J, Newell BR, et al. I Don’t Believe It, But I’d Better Do Something About It: Patient Experiences of Online Heart Age Risk Calculators. *J Med Internet Res*. 2014;16(5):118-129. doi:10.2196/jmir.3190



Risk Calculator:

Your risk of having a heart attack or stroke in the next 5 years is...



10%

This is in the **medium risk** range.

Your heart age is...



Out of 100 people like you, 10 will have a heart attack or stroke in the next 5 years if they don't take action

This is **ABOVE** your actual age. This means your risk may be higher of having a heart attack or stroke than someone of your actual age

Decision Aid:

Taking Cholesterol Lowering Medication



If you take Cholesterol Lowering Medication, your risk of having a heart attack or stroke in the next 5 years could decrease from 10% to 8%. Your risk is now low, not medium.



Should I take cholesterol-lowering medication?

Australian guidelines recommend that you **only** take cholesterol-lowering medication if:

- You're at a **high risk** of a heart attack or stroke
- You're at a **medium risk** of a heart attack or stroke, but you've tried changing your lifestyle and it has made no difference after 3-5 months.

Positives



It can reduce your risk of having a heart attack or stroke

Negatives



You may experience side effects, such as muscle aches, nausea, or constipation



You'll have to pay for the medication



You may need to have your liver monitored for a couple of months when you first start a statin.

Action Plan:

STEP 1: SNACKING MOMENTS

Sometimes we snack because we are hungry, but there are lots of other reasons too.

Below is a list of "snack moments." These are times when people tend to choose unhealthy snacks or eat too much.

Choose 3 snack moments from the list that happened to you the most often in the last week.

I often eat unhealthy snacks when...

- | | | |
|--|--|--|
| <input type="checkbox"/> I am busy or stressed | <input type="checkbox"/> I have arrived home | <input type="checkbox"/> People around me are eating |
| <input type="checkbox"/> I am sad | <input type="checkbox"/> I am bored | <input type="checkbox"/> I am drinking coffee or tea |
| <input type="checkbox"/> I start with one glass but then keep eating | <input type="checkbox"/> I am happy | <input type="checkbox"/> I am in front of a TV or computer |

STEP 5: HERE IS YOUR PLAN!

Please write this plan down or print it out and put it somewhere that you'll look at it a lot, like on your fridge.



If I want to snack because I am busy or stressed



Then I will listen to my favourite music or podcast



Please print or write this down! [Click here to print](#)



