

1 The isolated effect of age on the risk of COVID-19 severe outcomes: a systematic review with meta-  
2 analysis  
3 Karla Romero Starke<sup>1,2</sup>, David Reissig<sup>1</sup>, Gabriela Petereit-Haack<sup>3</sup>, Stefanie Schmauder<sup>1</sup>, Albert  
4 Nienhaus<sup>4,5</sup>, Andreas Seidler<sup>1</sup>

5

6 <sup>1</sup>Institute and Policlinic of Occupational and Social Medicine (IPAS), Faculty of Medicine Carl Gustav  
7 Carus, Technische Universität Dresden, 01307 Dresden, Germany

8 <sup>2</sup> Institute of Sociology, Faculty of Behavioral and Social Sciences, Technische Universität Chemnitz,  
9 Thüringer Weg 9, 09126 Chemnitz, Germany

10 <sup>3</sup> Division of Occupational Health, Department of Occupational Safety, Regional Government of South  
11 Hesse, 65197 Wiesbaden, Germany

12 <sup>4</sup> Department of Occupational Medicine, Toxic Substances and Health Research, Institution for  
13 Statutory Social Accident Insurance and Prevention in the Health Care and Welfare Services (BGW),  
14 22089 Hamburg, Germany

15 <sup>5</sup> Competence Centre for Epidemiology and Health Services Research for Healthcare Professionals  
16 (CVcare), Institute for Health Service Research in Dermatology and Nursing (IVDP), University Medical  
17 Centre Hamburg-Eppendorf (UKE), 20251 Hamburg, Germany

18

19 **Abstract**

20 **Introduction**

21 Increased age has been reported to be a factor for COVID-19 severe outcomes. However, many  
22 studies do not consider the age-dependency of comorbidities, which influence the course of disease.  
23 Protection strategies often target individuals after a certain age, which may not necessarily be  
24 evidence-based. The aim of this review was to quantify the isolated effect of age on hospitalization,  
25 admission to ICU, mechanical ventilation, and death.

26 **Methods**

27 This review was based on an umbrella review, in which Pubmed, Embase, and pre-print databases  
28 were searched on December 10, 2020 for relevant reviews on COVID-19 disease severity. Two  
29 independent reviewers evaluated the primary studies using predefined inclusion and exclusion  
30 criteria. The results were extracted, and each study was assessed for risk of bias. The isolated effect  
31 of age was estimated by meta-analysis, and the quality of evidence was assessed using GRADE.

32 **Results**

33 Seventy studies met our inclusion criteria (case mortality n=14, in-hospital mortality n=44,  
34 hospitalization n=16, admission to ICU n=12, mechanical ventilation n=7). The risk of in-hospital and  
35 case mortality increased per age year by 5.7% and 7.4%, respectively (Effect Size (ES) in-hospital  
36 mortality=1.057, 95% CI:1.038-1.054; ES case mortality= 1.074, 95% CI:1.061-1.087), while the risk of  
37 hospitalization increased by 3.4% per age year (ES=1.034, 95% CI:1.021-1.048). No increased risk was  
38 observed for ICU admission and intubation by age year. There was no evidence of a specific age  
39 threshold at which the risk accelerates considerably. The confidence of evidence was high for  
40 mortality and hospitalization.

41 **Conclusions**

42 Our results show a best-possible quantification of the increase in COVID-19 disease severity due to  
43 age. Rather than implementing age thresholds, prevention programs should consider the continuous  
44 increase in risk. There is a need for continuous, high-quality research and “living” reviews to evaluate  
45 the evidence throughout the pandemic, as results may change due to varying circumstances.

46

47 **What is already known?**

- 48       • Increasing age and comorbidities are risk factors for COVID-19 severe outcomes, such as  
49       hospitalization and mortality. However, comorbidities such as diabetes, cardiovascular  
50       disease, chronic pulmonary diseases increase with age, and the isolated effect of age on  
51       COVID-19 disease severity is not known.

52 **What are the new findings?**

- 53       • The risk of COVID-19 disease severity due to the isolated effect of age increases by age year  
54       and no specific age threshold was observed.
- 55       • A best possible quantification of the increase in risk of COVID-19 severe outcomes due to age  
56       has been done.

57 **What do the new findings imply?**

- 58       • Any workplace restrictions targeting a particular older age group are rather arbitrary, and  
59       may contribute to ageism in the society.
- 60       • If scores are to be built to assess an individual's risk for COVID-19 severe outcomes in  
61       workplace settings, these should be based on per-age increases.

62

63

## 64 1. Introduction

65 Since identified in Wuhan, China in December 2019 (1), COVID-19 has caused more than 3.4 million  
66 deaths worldwide (2). Early on, the increase COVID-19 adverse outcomes in the older population was  
67 observed (3-6). Chronic diseases, which increase with age, are also established risk factors for COVID-  
68 19 disease severity (7, 8). However, age and age-related risk factors, are often not de-coupled in  
69 studies (9). Since mortality rates are often presented by age groups (10), prevention strategies  
70 targeting older age groups in the workplace were started. After the first wave, the Federal State of  
71 Lower Saxony in Germany encouraged teachers over the age of 60 years to work from home.  
72 Recently, an IKKA score was developed in Germany for workers in order to establish, among other  
73 things, age-based criteria that could decide on the admissibility of work attendance (11). The risk  
74 score was partly-based on the age group of the individual (<50 years: score=0; 50-59 years: score=4;  
75  $\geq 60$  years: score=10). There have been discussions concluding in a consensus over the need to  
76 improve the risk score based on current evidence regarding the isolated effect of age on COVID-19  
77 disease severity (12). In general, we should be careful to classify 60 years of age as risk persons (or  
78 any other age group starting at a particular “arbitrary” age), as this can considerably reduce the  
79 chances of older unemployed people finding a job or make them “targets” for layoffs.

80 In mid-2020, we published a rapid review investigating the isolated effect of age on COVID-19 disease  
81 severity - that is, the direct effect of age after accounting for important age-related risk factors such  
82 as diabetes, cardiovascular disease, and chronic pulmonary disease. The result was that the effect of  
83 age was rather small (13). This review was based mainly on Chinese studies published early in the  
84 pandemic. As more studies have been published worldwide, a different picture might emerge, and it  
85 is necessary to examine the newly acquired evidence on the isolated effect of age on COVID-19  
86 disease severity.

87 We aim to gather information on published studies to answer the following:

88 1. What is the isolated effect of age on COVID-19 disease severity (hospitalization, admission to  
89 the intensive care unit (ICU), mechanical ventilation or death due to COVID-19), after  
90 adjusting for important age-related risk factors?

91 2. Is there evidence of an age threshold in which the risk of COVID-19 increases rapidly?

## 92 **2. Methods**

### 93 Search, selection, and data extraction

94 This systematic review was based on an umbrella review on pre-existing health conditions and severe  
95 COVID-19 outcomes published elsewhere (14). To summarize, on December 11, 2020 a systematic  
96 search for systematic reviews was done in PubMed and Embase, with hand searches on preprint  
97 servers (search string in supplement). The included systematic reviews investigated the association  
98 between at least one chronic health condition and a severe COVID-19 outcome, such as  
99 hospitalization, ICU admission, intubation, or death. After screening the titles and abstracts, followed  
100 by full text screening, 120 systematic reviews were included (Figure S1). Then, primary studies  
101 included in these reviews were screened. They were included in the analysis if they reported at least  
102 one quantitative measure of association in persons with pre-existing health conditions and at least  
103 one age-adjusted estimate. 160 primary studies were included in the umbrella review (Figure S2)  
104 (14).

105 To find adequate primary studies for the purpose of our research question regarding age and COVID-  
106 19 disease severity, we excluded studies investigating special populations, such as cancer patients or  
107 persons with diabetes. Studies were included if the age effect had been adjusted for at least three of  
108 the following comorbidities: diabetes mellitus, cardiovascular disease, cancer/immunodeficiency,  
109 chronic kidney disease, chronic liver disease, and chronic pulmonary disease (see Table 1 for  
110 eligibility criteria). Two independent scientists screened the full texts of the studies. In case of  
111 disagreement, a consensus decision was sought between both scientists. If no agreement was  
112 achieved, the decision was made by a third reviewer.

113

114 **Table 1.** Eligibility criteria

	<b>Inclusion criteria</b>	<b>Exclusion criteria</b>
<b>Population</b>	General population infected with COVID-19 (both sexes, all ages)	Special populations such as studying only cancer patients or persons with diabetes
<b>Exposure</b>	Age, in years	All other exposures which do not include age
<b>Comparator/control</b>	Age reference, in years	
<b>Outcomes</b>	Due to infection with COVID-19: risk of hospitalization, admission to ICU, intubation, and death. Risks measured as hazard ratios, risk ratios, odds ratios	Other outcomes, including outcomes of composite disease severity.
<b>Study design</b>	cross-sectional, case-control, and cohort studies	RCTs, qualitative studies, ecological studies, case reports, experiments, congress abstracts, posters

115 Excluded are studies only reporting univariate (unadjusted) effect values of age.  
116 Excluded are studies in which the age effect is not adjusted at least for three comorbidities listed  
117 here: diabetes mellitus, cardiovascular disease , cancer or immunodeficiency, chronic kidney disease,  
118 chronic liver disease, and chronic pulmonary disease .  
119

120 Data extraction was done by one reviewer and checked by another one. In case of missing  
121 information, study authors were contacted. The data extraction form included information on the  
122 first author, publication year, country of origin, study population, age and sex characteristics,  
123 outcome assessment, confounders, analysis methods, and results. A protocol of the review was  
124 registered a priori with the PROSPERO database of systematic reviews  
125 ([https://www.crd.york.ac.uk/prospero/display\\_record.php?RecordID=220614](https://www.crd.york.ac.uk/prospero/display_record.php?RecordID=220614)).

#### 126 Risk of Bias Assessment

127 We evaluated the overall risk of bias for each study as “low” or “high”, and followed the procedure  
128 for assessment based on Ijaz et al. 2013 (15), with modifications (13, 16). We also considered the  
129 criteria described by SIGN (Scottish Intercollegiate Guidelines, 2012) (17) and CASP (Critical Appraisal  
130 Skills Programme) (18). We assessed eight domain: 1) recruitment procedure and follow-up 2)  
131 exposure definition and measurement, 3) outcome definition and measurement, 4) inclusion of  
132 important age-dependent risk factors, 5) analysis method, 6) chronology, 7) funding, and 8) conflict  
133 of interest. Each domain was characterized as having a low, high, or unclear risk of bias (see

134 supplementary material for a detailed description). Domains 1-5 and 6-8 were major and minor  
135 domains, respectively. A study was evaluated as having an overall low risk of bias if all major domains  
136 had a low risk of bias.

#### 137 Data synthesis

138 We evaluated studies using age categories and calculated the median of each of the age categories. If  
139 lower and upper categories were open ended, we used reasonable values based on the youngest and  
140 oldest participants included. For the younger open-ended age groups, we chose a lower boundary of  
141 18 years if the population encompassed adults only. The median value of 18 years and the upper  
142 boundary of the lower open-ended age category was estimated. For the older open-ended age  
143 groups an upper boundary of 95 years of age was chosen and a median value was similarly  
144 calculated. However, these values were also modified in a sensitivity analysis. If studies only had risks  
145 of binary categories of age, such as >60 years vs ≤60 years, they were excluded from the meta-  
146 analysis. A log-linear model and a log-cubic model was constructed weighted for variance, and the  
147 Akaike Information Criteria (AIC) for each model was evaluated. The log of the relative risk (RR) was  
148 then plotted against the age mid-points to assess linearity for the specific outcome studied, first for  
149 each individual study, and then for all studies using categorized age. We wanted to assess whether  
150 (a) there is an age threshold present at which the  $\ln(\text{RR})$  increases and (b) whether a log-linear  
151 relationship for the categorical studies would be a reasonable assumption. If a log-linear association  
152 could be assumed, a risk effect per year was obtained by using the Generalized Least Squares for  
153 trend estimation of summarized dose-response data (*g/st*) (19). If the number of cases per age  
154 category was unknown, the risk estimate was obtained by variance-weighted least squares (*vw/s*). If  
155 the log-linear association could be assumed, then the studies using categorical values were pooled  
156 with the ones using continuous values through a random-effects meta-analysis using the *metan*  
157 package (20). A similar procedure has been done before (15, 21). If two studies investigated the same  
158 population, the study with the highest quality was chosen. Odds ratios (OR) were converted to RRs  
159 using the formula proposed by Zhang and Yu 1998 (22) when the prevalence in the reference group  
160 was greater than 10% to avoid an overestimation of the RRs.



161 We compared the pooled effects of studies using continuous values for age and those using  
162 categorical values. Heterogeneity was assessed by  $I^2$  values, and publication bias was explored using  
163 Funnel plots and Egger's test (*metabias*) if there were at least ten studies. Stata Version 14.2  
164 (StatCorp, College Station, TX, USA) was used.

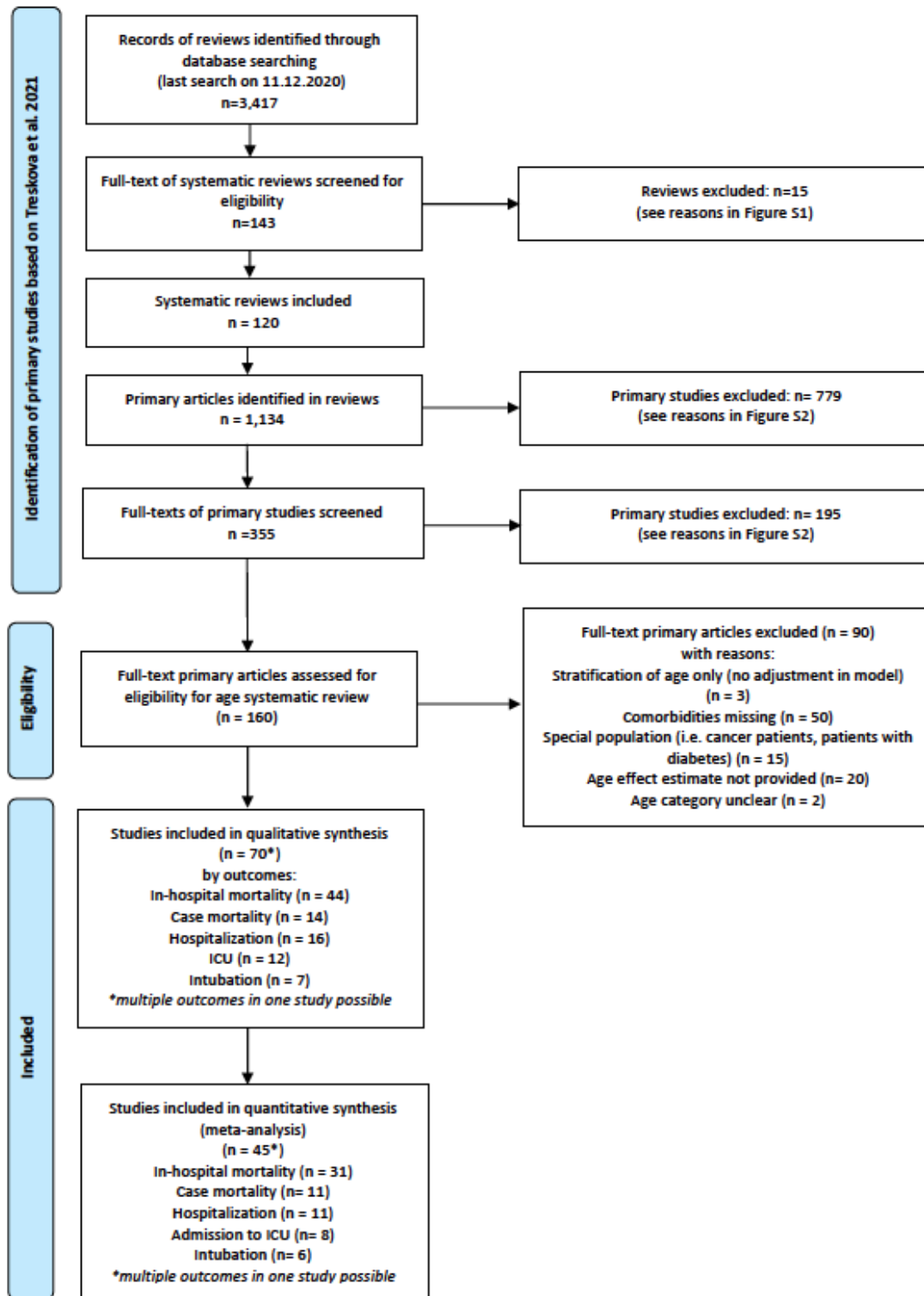
#### 165 2.4 Assessment of the quality of the total body of evidence

166 We used the Grading of Recommendations Assessment, Development, and Evaluation (GRADE)  
167 approach for grading the quality of the total body of evidence (23), following the example of Hulshof  
168 et al. 2019 (24), with modifications (25). The quality of evidence was either high, moderate, or low.  
169 Since only observational studies were included, the starting level was set to "moderate". The quality  
170 was downgraded based on four factors: study limitations, indirectness, inconsistency, imprecision,  
171 and publication bias. If study findings had large effect sizes, if there were dose-response  
172 relationships, or if the presence of residual confounding was suspected (increasing the confidence in  
173 the association), the quality of evidence was upgraded. For the effect size evaluation, we considered  
174 the difference in risk due to age between a person entering adulthood (18 years) and the worldwide  
175 life expectancy (72 years) (26), a difference of 54 years.

176

## 177 **Results**

178 After reviewing the 160 included primary studies from the umbrella review (14), we included 70  
179 studies (27-96) (Figure 1). Table S1 lists the excluded studies with reasons.



180  
181 **Figure 1.** Selection process for primary studies from original Umbrella Review (Treskova et al. 2020)

182

183 Except for Gu et al. 2020 (51), a case control study, all studies were either retrospective or

184 prospective cohort studies. Most originated from USA (34), while 14 studies came from Europe, 8

185 from Latin America (Mexico and Brazil), 10 from China, two from South Korea, and one each from  
186 South Africa and Israel. Details on study characteristics are in Table S2.

187 In-hospital mortality

188 Forty-four studies investigating the risk of in-hospital mortality, meaning the risk of mortality in  
189 hospitalized patients, were included. Most studies were set in Western countries, such as USA  
190 (n=21), Europe (n=13), and Latin America (n=2). Six studies were set in China, one in South Africa, and  
191 one in South Korea. Nineteen studies reported the risk of in-hospital mortality per age year, while the  
192 others used age categories to report the effect of age on risk. The results can be seen in Table S3.

193 From the 44 studies, eight studies (28, 30, 34, 48, 64, 72, 75, 77) were assessed as having a low risk of  
194 bias. The majority had a high risk of bias because not all six age-dependent comorbidities were  
195 included in the model, while some used rough age categories in their models (greater than 10 years  
196 or a binary age category such as >60 years vs ≤60 years) (Table S4).

197 Thirty-one studies were included in the meta-analysis. Six studies (27, 37, 58, 65, 67, 83) were  
198 excluded because of the use of a binary age category, while one was excluded because the risk was  
199 reported by an age z-score, making it hard to compare to the other studies (81). Four studies were  
200 excluded from the main meta-analysis because they investigated mortality only on critically-ill  
201 hospitalized patients or patients with COVID-19 cytokine storm (43, 50, 53, 72). Two studies (36, 56)  
202 investigated the same study population, but Carter and Collins et al. 2020 (36) was chosen because  
203 this study had adjusted for more age-related risk factors. Likewise, Shi et al. 2020 (84) and Zhao et al.  
204 2020 (95) used the same population. The former study was used because it reported age as a  
205 continuous factor, rather than a very rough age category. For the studies using age as categorical  
206 variables, the age and log of RR were modeled as linear and cubic relationships and plotted (Figure  
207 S3). Although the weighted cubic model had a lower AIC value (-71.8) than the weighted linear model  
208 (-62.5), the cubic model showed no evidence of a rapid increase in the slope at a specific age. At  
209 around age 70, there was a downturn in the slope which did not follow the points, indicating a  
210 possible better fit with a fractional or higher-level polynomial relationship. We assumed a log-linear  
211 relationship for simplicity, as at least for the ranges 20 to 70 years there seemed to be no conflict

212 with that assumption. A per-year effect was calculated for studies using age categories and they  
213 were included in the meta-analysis.

214 The pooled RR for the 31 studies was 1.046 (95% CI: 1.039-1.054) per age year (Table 2). The funnel  
215 plot was asymmetric (Figure S4; Egger's test  $p < 0.0001$ ), but the funnel plot using age as a continuous  
216 variable differed from the one using age derived from categories (Figure S5a-b). Upon closer look,  
217 the pooled RR of studies using age as a continuous variable (16 studies, 52%) was higher than the  
218 pooled RR of studies dividing age into categories ( $RR_{\text{age continuous}} = 1.057$ ; 95% CI 1.047-1.067;  $RR_{\text{age}}$   
219  $\text{categories} = 1.037$ ; 95% CI 1.028-1.046). Since the calculated midpoints from the age categories might be  
220 inaccurate, we hypothesized that the RR of studies using a higher number of age categories would be  
221 closer to the  $RR_{\text{age continuous}}$ . Indeed, studies having more than four age categories had a pooled RR of  
222 1.039 (95% CI 1.026-1.053), whereas studies with four or less age categories had a pooled RR of  
223 1.030 (95% CI 1.020-1.041). We divided studies by age category width (5 vs. 10 vs. 10+ years  
224 intervals) and found that the effect estimate was lowest with studies using the widest age categories  
225 (10+ years  $RR = 1.030$ ; 95% CI 1.021-1.039), followed by studies using 10-year categories ( $RR = 1.046$ ;  
226 95% CI 1.040-1.051). Only one study used a 5-year age category, having the highest estimate  
227 ( $RR = 1.060$ ; 95% CI 1.051-1.070). Because of probable bias using different age categories, further  
228 analyses for in-hospital mortality focused on studies using age as a continuous variable (Table 2). The  
229 pooled RR did not differ by study quality. Studies from USA, Europe, and South Korea had similar  
230 pooled RRs, whereas as the pooled RR for the Chinese studies was lower ( $RR = 1.041$ ; 95% CI 0.999-  
231 1.085). The unadjusted and adjusted RRs on studies reporting both values were similar  
232 ( $RR_{\text{unadjusted}} = 1.060$ , 95% CI: 1.034-1.086;  $RR_{\text{adjusted}} = 1.059$ , 95% CI: 1.037-1.081).

233 **Table 2.** Results of pooled risks from meta-analyses

	Pooled ES (per age year)	Risk estimates (n)	I <sup>2</sup>
<b>In-hospital mortality</b>			
All studies	1.046 (1.038-1.054)	31	93.2%
Age: continuous	1.057 (1.047-1.067)	16	64.1%
Age: categories	1.037 (1.028-1.046)	15	94.9%
Quality: high*	1.057 (1.045-1.070)	12	58.7%
Quality: low*	1.057 (1.040-1.074)	4	77.7%
Region: USA*	1.059 (1.045-1.072)	8	74.5%
Region: Europe*	1.060 (1.044-1.077)	5	40.3%
Region: China*	1.041 (0.999-1.085)	2	78.8%
Region: South Korea*	1.055 (1.003-1.109)	1	-
<b>Case mortality</b>			
All studies	1.074 (1.061-1.087)	11	85.3%
Age: continuous	1.063 (1.043-1.084)	3	68.7%
Age: categories	1.078 (1.059-1.097)	8	73.7%
Quality: high	1.094 (1.082-1.106)	2	0%
Quality: low	1.069 (1.056-1.083)	9	82.0%
Region: USA	1.061 (1.048-1.073)	5	67.1%
Region: Europe	1.100 (1.075-1.125)	3	76.6%
Region: South Africa	1.072 (1.057-1.088)	1	-
Region: South America	1.090 (1.058-1.122)	1	-
Region: China	1.040 (1.015-1.065)	1	-
<b>Hospitalization</b>			
All studies	1.034 (1.021-1.048)	11	99.9%
Age: continuous	1.039 (1.016-1.062)	3	86.8%
Age: categories	1.034 (1.018-1.049)	8	99.9%
Quality: high	1.051 (1.040-1.061)	4	97.2%
Quality: low	1.025 (1.019-1.032)	7	98.1%
Region: USA	1.033 (1.025-1.042)	7	93.5%
Region: Europe	1.047 (1.034-1.060)	3	98.2%
Region: South America	1.016 (1.016-1.017)	1	-
<b>ICU admission</b>			
All studies	1.006 (0.999-1.013)	8	51.2%
Age: continuous	1.003 (0.996-1.010)	5	19.0%
Age: categories	1.013 (0.998-1.028)	3	31.6%
Quality: high	1.004 (0.996-1.013)	3	76.1%
Quality: low	1.011 (0.996-1.026)	5	30.7%
Region: USA	1.007 (1.000-1.013)	6	50.4%
Region: China	1.033 (0.939-1.136)	2	74.9%
<b>Intubation</b>			
All studies	1.006 (0.995-1.018)	6	74.8%
Age: continuous	1.008 (0.992-1.024)	3	0.0%
Age: categories	1.006 (0.991-1.021)	3	88.1%

234 \*for age continuous; ES= effect size

235

236

237 Case Mortality

238 Fourteen studies investigating case mortality were included, in which mortality was ascertained in  
239 individuals who had tested positive for COVID-19. Five studies were from USA (52, 54, 61, 90, 92),  
240 three studies originated from Europe (34, 78, 79), three from Latin America (35, 86, 87), and one  
241 each from China (51), South Africa (33), and South Korea (66). The results can be seen in Table S5.  
242 Three studies (21%) were rated as having a low risk of bias. Most of the studies had a high risk of bias  
243 because they did not adjust for all age-dependent risk factors, the age categories were quite wide,  
244 and the recruitment procedure indicated a possible selection bias (i.e. such as recruitment of only  
245 symptomatic people or people who presented for care at hospitals without being hospitalized, or if  
246 ICD codes used for recruitment were not necessarily related to COVID-19) (Table S6).  
247 Eleven studies were included in the meta-analysis, of which the majority used age categories (8 of  
248 11). One study was excluded due to the use of binary age categories (87). One study (54) reported  
249 the age year RR within age categories, and therefore it was not possible to compare to the other  
250 studies. Two studies used the same study population (35, 86), but Solis et al. 2020 (86) was chosen  
251 because the study had adjusted for more age-related factors and it had used a higher number of age  
252 categories.  
253 The cubic model showed a relatively flat relationship between log(RR) and age from ages 40 to 85  
254 years (Figure S6). Because both models had similar AIC values (linear: -157.4; cubic: -159.3), we  
255 assumed a linear model.  
256 The meta-analysis resulted in a pooled RR of 1.074 (95% CI 1.061-1.087) per age year (Table 4). The  
257 respective funnel plot showed asymmetry (Figure S7), although Egger's test was not significant  
258 ( $p=0.320$ ). The pooled RR of studies using continuous (RR=1.063; 95% CI 1.043-1.084) and categorical  
259 (RR=1.078; 1.059-1.097) age variables differed. However, since the 95% CI values overlapped, there  
260 was no significant difference observed. We divided studies by age category width (5 vs. 10 vs. 10+-  
261 year intervals) and again found that the effect estimate was lowest with studies using the widest age  
262 categories (10+ years RR=1.042; 95% CI 1.028-1.056; 10 years RR=1.080; 95% CI 1.057-1.103) and  
263 highest for studies using the most narrow age of five years (RR=1.094; 95% CI 1.082-1.107).

264 The high-quality studies had a higher RR per age than low quality studies ( $RR_{\text{high quality}}=1.094$ , 95% CI:  
265 1.082-1.106;  $RR_{\text{low quality}}=1.069$ ; 95% CI: 1.056-1.083). European studies ( $n=3$ ) had the highest pooled  
266 RR ( $RR=1.100$ ; 95% CI 1.075-1.125), followed by USA studies ( $RR=1.061$ ; 95% CI 1.075-1.125). Other  
267 regions had only one study, so a reliable comparison was not possible. The unadjusted and adjusted  
268 RRs on studies reporting both values were similar ( $RR_{\text{unadjusted}}=1.079$ ; 95% CI: 1.062-1.097;  
269  $RR_{\text{adjusted}}=1.072$ ; 95% CI: 1.054-1.091).

## 270 Hospitalization

271 A summary of the results of studies investigating risk of hospitalization by age can be seen in Table  
272 S7. The study population typically used were individuals who were positive for COVID-19, some of  
273 which were hospitalized due to complications related to the infection. Sixteen studies were included,  
274 of which nine originated in the USA (29, 38, 47, 52, 63, 76, 77, 91, 96), three in Europe (34, 78, 79),  
275 three in Latin America (35, 49, 85), and one in Israel (70). Four (25%) of the studies had a low risk of  
276 bias, and the reasons for high risk of bias were mainly the lack of adjustment for all pre-defined age-  
277 related risk factors and the use of binary or rough age categories (Table S8).

278 Of the sixteen studies, eleven were included in the meta-analysis. Ebinger et al. 2020 (47) was  
279 excluded because the outcome was complex with reference categories that could not be compared  
280 to other studies (hospitalized/non-ICU vs. ICU/non-intubated vs ICU/intubated). Carrillo-Vega et al.  
281 2020 (35) and Giannouchos et al. 2020 (49) used the same study population, but the latter was used  
282 because the study had more age categories and adjusted for a higher number of age-related risk  
283 factors. Furthermore, two studies (70, 85) used binary age categories and one did not provide  
284 confidence intervals (63). Most studies (8 of 11) used age categories.

285 The results of the weighted linear and cubic models of studies using age categories are shown in  
286 Figure S8. Although the AIC values for the linear model were higher than for the cubic model (-57.2  
287 vs -21.7, we did choose the linear model because of a lack of threshold where the rate increases with  
288 age and because the age range modeled appeared as a linear relationship.

289 The pooled RR for all studies was 1.034 (95% CI: 1.021-1.048). The funnel plot looked asymmetric  
290 (Figure S9), but Egger's test was statistically not-significant ( $p=0.439$ ). The RR of studies using  
291 continuous and categorical age values were very similar (Table 4), noting that most studies (63%)  
292 using age categories utilized more than four age categories. Again, using a finer age width increased  
293 the RR for studies using age categories (10+ years RR=1.024 95% CI: 1.018-1.030; 10 years RR=1.040  
294 95%CI: 1.037-1.043; 5 years RR=1.056 95% CI:1.055-1.057) . The pooled effect for high-quality studies  
295 was higher than for low quality studies ( $RR_{\text{high quality}}=1.051$ , 95% CI: 1.040-1.061;  $RR_{\text{low quality}}=1.025$ ;  
296 95% CI: 1.019-1.032). Moreover, the European studies had a higher pooled risk (RR=1.047; 95% CI:  
297 1.034-1.060) than the USA studies (RR=1.033, 95% CI: 1.025-1.042), but the difference was not  
298 statistically significant. The unadjusted RR values were slightly higher than the adjusted values  
299 ( $RR_{\text{unadjusted}}=1.045$ , 95% CI: 1.026-1.065;  $RR_{\text{adjusted}}=1.031$ , 95% CI: 1.009-1.053).

### 300 Admission to ICU

301 Twelve studies investigated the effect of age on admission to ICU. Typically, the studies used  
302 hospitalized individuals as the study population and followed them up (retrospectively or  
303 prospectively). Eight studies originated in the USA (28, 55, 61, 64, 77, 82, 88, 96) and four were from  
304 China (32, 46, 51, 89). A summary of the results can be seen in Table S9. Four (33%) of the studies  
305 were of high quality (low risk of bias). Similar to the other outcomes, the reasons for a high risk of  
306 bias were mainly due to the confounding domain, and to a lesser extent, to the exposure domain  
307 (rough age categories) (Table S10).

308 Eight studies were included in the meta-analysis. Du et al. 2020 (46) was not included. Due to the  
309 nature of its complex outcome, it could not be compared to other studies. Two studies evaluated the  
310 risk of ICU on individuals who had tested positive to COVID-19 (51, 96), and one study used a binary  
311 age category (88).

312 The pooled RR for the studies was 1.006 (95% CI: 0.999-1.013). Five studies (63%) used age as a  
313 continuous variable, and these studies had only a slightly lower RR (1.003; 95% CI: 0.996-1.010)  
314 compared to the ones using age as a categorical value (RR=1.013; 95% CI: 0.998-1.028), but still the



315 effect was statistically not-significant for both. The high quality studies had a slightly lower RR than  
316 the low quality studies ( $RR_{\text{high quality}}=1.004$ , 95% CI: 0.996-1.013;  $RR_{\text{low quality}}=1.011$ ; 95% CI: 0.996-  
317 1.026), but again both estimates were not statistically-significant (Table 4).

318

319 Mechanical ventilation (intubation)

320 Seven studies investigated the effect of age on the risk of intubation, using individuals hospitalized  
321 due to COVID-19. All studies were set in the USA (42, 55, 74, 82, 88, 91), and a summary of the  
322 results can be seen in Table S11. No studies had a low risk of bias (high quality), either due to the  
323 “confounding” or “exposure assessment” domain (Table S12). Half of the studies used age categories,  
324 and the effect estimate was similar for studies using a continuous and a categorical age variable. One  
325 study (88) was excluded from the meta-analysis because it used a binary category for age. The  
326 pooled RR showed a very weak statistically not-significant increase in risk per age year ( $RR=1.006$ ;  
327 95% CI 0.995-1.018) (Table 4).

328

329 Quality of evidence

330 Since only observational studies were included, the initial level of evidence was set at “moderate”.  
331 After decreasing a level for unclear publication bias, and increasing two levels for dose-response  
332 effect and two levels for a large effect estimate, the overall certainty of evidence was high for both  
333 risk of in-hospital mortality and case mortality. For hospitalization, after downgrading for high  
334 inconsistency and unclear publication bias, and upgrading for dose response, effect estimate, and  
335 effect size, the overall certainty of evidence was high (Table 5).

336 There was no statistically-significant effect observed for admission to ICU and intubation. Hence,  
337 these outcomes were not included in the assessment.

338 **Table 5.** Assessment of evidence for the risk of studied outcomes based on Grades of Recommendations, Assessment, Development, and Evaluation framework  
 339 (GRADE).

Risk	Quality of study limitations: ↓	Indirectness of evidence: ↓	Inconsistency: ↓	Imprecision, range confidence interval effect size >2.0: ↓	Publication bias, yes or unclear: ↓	Effect estimate >2.0: ↑ >5.0: ↑↑	Dose-response effect: ↑	Residual confounding: ↑	Overall certainty (high, moderate, low)
In-hospital mortality	no (-) <sup>1</sup>	no (-)	no (-) <sup>2</sup>	no (-)	unclear ↓	yes ↑↑ <sup>3</sup>	yes ↑	no (-)	high
Case mortality	no (-) <sup>1</sup>	no (-)	no (-) <sup>4</sup>	no (-)	unclear ↓	yes ↑↑ <sup>5</sup>	yes ↑	no (-)	high
Hospitalization	no (-) <sup>1</sup>	no (-)	yes ↓ <sup>6</sup>	no (-)	unclear ↓	yes ↑↑ <sup>7</sup>	yes ↑	no (-)	high

340

<sup>1</sup> High quality studies also reported a significant association between age and risk of outcome.

<sup>2</sup> Moderate heterogeneity ( $I^2=64.1\%$ ) was observed on studies using age as a continuous variable and on high-quality studies ( $I^2= 58.7\%$ )

<sup>3</sup> Although per age RR is 1.057, when comparing different adult groups can have an effect size of greater than 5.0 (i.e., a 54-year difference, 18 years vs 72 years results in a RR of 20.0)

<sup>4</sup> Moderate heterogeneity ( $I^2=68.7\%$ ) was observed on studies using age as a continuous variable and on high-quality studies heterogeneity was very low ( $I^2= 0\%$ )

<sup>5</sup> Although per age RR is 1.074, when comparing different adult groups can have an effect size of greater than 5.0 (i.e., a 54-year difference, 18 years vs 72 years results in a RR of 47.2)

<sup>6</sup> High heterogeneity observed ( $I^2 > 85\%$ )

<sup>7</sup> Although per age RR is 1.034, when comparing different adult groups can have an effect size of greater than 5.0 (i.e., a 54-year difference, 18 years vs 72 years results in a RR of 6.08)

341 **Discussion**

342 An increased age-related risk of COVID-19 in-hospital mortality, case mortality, and hospitalization of  
343 5.7%, 7.4%, and 3.4% per age year, respectively, was observed, with a high quality of evidence.

344 Further, there was no evidence of an age threshold at which the risk of disease severity increased,  
345 with the age effect appearing to be linear. The association between age and both ICU admission and  
346 mechanical ventilation was weak and not statistically-significant. Although effects varied slightly by  
347 region, there were no obvious trends observed.

348 Our results for case mortality are in agreement with a review which found a log-linear association  
349 between age and infection fatality rate, but which did not include comorbidities in their analysis (9).

350 Strengths and limitations

351 To our knowledge, since our rapid review published (13), this is the first systematic review primarily  
352 focused on estimating the isolated effect of age on the risk of COVID-19 disease severity, including  
353 case and in-hospital mortality, hospitalization, ICU admission, and intubation. It encompasses 70  
354 primary studies with data from more than 400,000 participants and includes only studies adjusting  
355 for important age-related factors associated with COVID-19 disease severity (14). Adjusting for  
356 comorbidities allows to explicitly “factor out” the mediating effect of comorbidities in order to get  
357 the isolated effect of age, or the risk presented by a person of a given age who has no preexisting  
358 conditions.

359 The results in this review should be considered in light of its limitations. For studies reporting age as  
360 a categorical value, since the age categories used in the studies could not be compared because of  
361 their heterogeneity, the median of the age category represented the age for the reported effect size.  
362 This procedure could have led to inaccuracies of the effect size. This was evident in that effect sizes  
363 increased when using finer age categories, indicating that the use of wide age categories most likely  
364 leads to an underestimation of the age effect. We reported the pooled effect sizes for studies using  
365 age as a continuous variable for the outcome in-hospital mortality. For the other outcomes we  
366 reported the pooled effect size for studies using categorical and continuous age variables together  
367 since their effect was similar.

368 The funnel plots were asymmetrical, which was especially obvious for in-hospital mortality, where  
369 half of the studies used age as a categorical variable. However, funnel plot asymmetry has other  
370 possible causes besides publication bias (97). In this case, we believe that the cause is due to the  
371 heterogeneity of the exposure-namely when using studies with age as categorical variables. This was  
372 indeed shown when plotting funnel plots separately for studies using continuous and categorical age  
373 variables. The studies using continuous variables did not show obvious asymmetry in the funnel  
374 plots, while the studies using categorical age variables did show asymmetry. However, they had a  
375 narrow range of standard errors, which is also a contraindication for using funnel plots (97, 98). Even  
376 though we downgraded for publication bias in our GRADE evaluation, the overall assessment of  
377 evidence was still rated as high.

378 The adjusted effect estimates were only slightly lower than the unadjusted estimates, or at least the  
379 difference was not as great as observed in our previous rapid review. An explanation could be a  
380 potential interaction effect between age and certain chronic diseases, or a possible selection effect.  
381 This was observed in the related umbrella review by Treskova et al. 2021 (14) and the review by  
382 Mesas et al. 2021 (99) where younger individuals who had heart failure and kidney disease had a  
383 higher risk of in-hospital mortality compared to the risk observed in older individuals. This effect was  
384 also seen for hypertension (99). It may be that older patients are more quickly admitted to the  
385 hospital with less severe concomitant diseases than younger patients, which may be reflected as an  
386 increased in-hospital mortality for younger patients, essentially due to a selection effect in the  
387 hospital admission.

388 There was no increased risk by age year for being admitted to the ICU or for mechanical ventilation,  
389 but this result is hard to reconcile, given the strength of association between age and mortality. The  
390 included studies mostly occurred during the first and second waves, when ICU capacity was limited.  
391 How this lack of association is due to the possibility of triage in some scenarios is unknown, but  
392 worth considering.

393 Lastly most of the primary studies included were done in the first or second wave of the pandemic,  
394 and new mutations which may affect the association between age and disease severity were not  
395 considered.

396 Methodological quality of the included studies

397 Although high-quality studies were present for every outcome except mechanical ventilation, low-  
398 quality studies dominated. High-quality studies had the same effect estimate as low-quality studies  
399 for in-hospital mortality, but for case mortality and hospitalization, low-quality studies  
400 underestimated the isolated effect of age. The main reason for a low risk of bias was the lack of  
401 adjustment for all age-related risk factors in the domain “confounding”. Moreover, considering the  
402 “recruitment” domain, some studies included participants who used clinical symptoms as a COVID-19  
403 case, which is less accurate than a RT-PCR test. It should be mentioned that the recruitment domain  
404 could have potentially been high risk for most studies, as in the early stages of the pandemic, RT-PCR  
405 testing was relatively scarce, and only individuals with symptoms or who had direct contact with a  
406 positive person were tested in some countries. Furthermore, some studies used rough age  
407 categories which will lead to an inaccurate risk effect. Lastly, some studies corrected for biomarkers  
408 or factors (such as fever, d-Dimer level, lymphocyte count) that reflect disease severity. When  
409 studying associations between disease severity and age and chronic factors, using such markers in  
410 the model should be avoided to avoid overadjustment.

411 Implications for practice, policy, and future research

412 During the COVID-19 pandemic, it is necessary to accurately define risk groups for COVID-19 disease  
413 severity when implementing contact or work restrictions. This review shows that increased age year  
414 is associated with mortality and hospitalization, and an age threshold for which there is a marked  
415 increase in risk was not apparent. Therefore, targetting persons above a certain (arbitrary) age  
416 threshold is not recommended in the workplace, as it may lead to ageism, permeating in the  
417 community and in the workplace (100). If workers older than 60 years are not allowed to perform a  
418 work task because of perceived higher risk of disease severity starting at that age, it is difficult to  
419 argue why a person can still perform that activity at age 59, but must stop it or needs special

420 protection on their 60<sup>th</sup> birthday. Rather, individualized risk profiles should be made by considering a  
421 continuous increase in risk by age-year.

422 Contrary to workplace restrictions, the use of an isolated, per-age year increase when prioritizing  
423 vaccinations is not recommended. Government agencies often divide the population in age groups-  
424 but this categorization is not purely about age-related effects. Rather, the high-age groups always  
425 include a higher proportion of individuals with pre-existing conditions. In this respect, our result of  
426 an approximately linear increase in isolated age risk cannot be used as an argument against the  
427 definition of vaccination prioritization groups.

428 This comprehensive review contradicts our previous rapid review (13), which encompassed mainly  
429 Chinese studies and indicated a weak influence of age on COVID-19 disease severity. This highlights  
430 the need for continuous, “living” reviews of the available evidence throughout the pandemic, as  
431 results may change due to more available evidence available or to new variants affecting the  
432 association between age and disease severity. Further, as there are hints of possible effect  
433 modifications between age and certain chronic diseases (14), future studies should focus on  
434 quantifying these interactions.

435

#### 436 **Conclusions**

437 A best-possible quantification of the increase in COVID-19 disease severity due to age was achieved.  
438 Age-related workplace prevention programs should consider the continuous increase in risk, rather  
439 than implementing age thresholds. There is a need for continuous, high-quality research to  
440 characterize age associations with disease severity in light of new variants.

441

#### 442 **Acknowledgments**

443 Our heartfelt thanks to Dr. Thomas Harder and Dr. Marina Treskova from the Robert Koch Institute  
444 for their recommendations and for giving us access to their study database.

445

#### 446 **Patient and Public Involvement**

447 Patients or the public were not involved in the design, or conduct, or reporting, or dissemination  
448 plans of our research.

449

## References

450

- 451 1. Zhu N, Zhang D, Wang W, Li X, Yang B, Song J, et al. A Novel Coronavirus from Patients with  
452 Pneumonia in China, 2019. *New England Journal of Medicine*. 2020;382(8):727-33.
- 453 2. WHO. Coronavirus disease (COVID-19) pandemic, 2021 2021 [Available from:  
454 <https://www.who.int/emergencies/diseases/novel-coronavirus-2019>.
- 455 3. Chen T, Dai Z, Mo P, Li X, Ma Z, Song S, et al. Clinical characteristics and outcomes of older  
456 patients with coronavirus disease 2019 (COVID-19) in Wuhan, China (2019): a single-centered,  
457 retrospective study. *J Gerontol A Biol Sci Med Sci*. 2020:glaa089.
- 458 4. Chen T, Wu D, Chen H, Yan W, Yang D, Chen G, et al. Clinical characteristics of 113 deceased  
459 patients with coronavirus disease 2019: retrospective study. *BMJ*. 2020;368:m1091.
- 460 5. Dudley JP, Lee NT. Disparities in Age-specific Morbidity and Mortality From SARS-CoV-2 in  
461 China and the Republic of Korea. *Clin Infect Dis*. 2020.
- 462 6. Verity R, Okell LC, Dorigatti I, Winskill P, Whittaker C, Imai N, et al. Estimates of the severity  
463 of coronavirus disease 2019: a model-based analysis. *Lancet Infect Dis*. 2020:S1473-3099(20)30243-7.
- 464 7. Robert Koch Institut (RKI). Informationen und Hilfestellungen für Personen mit einem  
465 höheren Risiko für einen schweren COVID-19-Krankheitsverlauf 2020 [updated 05/28/2020. Available  
466 from: [https://www.rki.de/DE/Content/InfAZ/N/Neuartiges\\_Coronavirus/Risikogruppen.html](https://www.rki.de/DE/Content/InfAZ/N/Neuartiges_Coronavirus/Risikogruppen.html).
- 467 8. CDC. Underlying medical conditions associated with high risk for severe COVID-19:  
468 Information for healthcare providers. National Center for Immunization and Respiratory Diseases  
469 (NCIRD), Division of Viral Diseases; 2021 March 29, 2021.
- 470 9. Levin AT, Hanage WP, Owusu-Boaitey N, Cochran KB, Walsh SP, Meyerowitz-Katz G.  
471 Assessing the age specificity of infection fatality rates for COVID-19: systematic review, meta-  
472 analysis, and public policy implications. *European Journal of Epidemiology*. 2020;35(12):1123-38.
- 473 10. Robert Koch Institut (RKI). Todesfälle nach Sterbedatum (2.4.2021).  
474 [https://www.rki.de/DE/Content/InfAZ/N/Neuartiges\\_Coronavirus/Projekte\\_RKI/COVID-  
475 19\\_Todesfaelle.html](https://www.rki.de/DE/Content/InfAZ/N/Neuartiges_Coronavirus/Projekte_RKI/COVID-19_Todesfaelle.html): RKI; 2021.
- 476 11. Wolfschmidt A, Ochmann U, Nowak D, Drexler H. Schwerpunkt-Themen.
- 477 12. Kaifie A, Starke KR, Kämpf D, Tautz A, Petereit-Haack G, Angerer P, et al. Schwerpunkt-  
478 Themen.
- 479 13. Romero Starke K, Petereit-Haack G, Schubert M, Kämpf D, Schliebner A, Hegewald J, et al.  
480 The Age-Related Risk of Severe Outcomes Due to COVID-19 Infection: A Rapid Review, Meta-Analysis,  
481 and Meta-Regression. *International Journal of Environmental Research and Public Health*.  
482 2020;17(16):5974.
- 483 14. Treskova-Schwarzbach M, Haas L, Reda S, Pilic A, Borodova A, Karimi K, et al. Pre-Existing  
484 Health Conditions and Severe COVID-19 Outcomes: Umbrella Review and Meta-Analysis of Global  
485 Evidence. SSRN; 2021.
- 486 15. Ijaz S, Verbeek J, Seidler A, Lindbohm ML, Ojajärvi A, Orsini N, et al. Night-shift work and  
487 breast cancer--a systematic review and meta-analysis. *Scand J Work Environ Health*. 2013;39(5):431-  
488 47.
- 489 16. Johnson PI, Koustas E, Vesterinen HM, Sutton P, Atchley DS, Kim AN, et al. Application of the  
490 Navigation Guide systematic review methodology to the evidence for developmental and  
491 reproductive toxicity of triclosan. *Environment international*. 2016;92:716-28.
- 492 17. Scottish Intercollegiate Guidelines Network (SIGN). Methodology checklist 3: cohort studies  
493 Edinburgh: SIGN; [updated 30.05.2018. Available from: <http://www.sign.ac.uk>.
- 494 18. Critical Appraisal Skills Programme. CASP Cohort Study Checklist 2018 [Available from:  
495 <https://casp-uk.net/casp-tools-checklists/>.
- 496 19. Orsini N, Bellocco R, Greenland S. Generalized least squares for trend estimation of  
497 summarized dose-response data. *The stata journal*. 2006;6(1):40-57.
- 498 20. Harris RJ, Deeks JJ, Altman DG, Bradburn MJ, Harbord RM, Sterne JA. Metan: fixed-and  
499 random-effects meta-analysis. *The Stata Journal*. 2008;8(1):3-28.



- 500 21. Seidler A, Romero Starke K, Freiberg A, Hegewald J, Nienhaus A, Bolm-Audorff U. Dose–  
501 Response Relationship between Physical Workload and Specific Shoulder Diseases—A Systematic  
502 Review with Meta-Analysis. *International Journal of Environmental Research and Public Health*.  
503 2020;17(4):1243.
- 504 22. Zhang J, Kai FY. What's the relative risk?: A method of correcting the odds ratio in cohort  
505 studies of common outcomes. *Jama*. 1998;280(19):1690-1.
- 506 23. Guyatt G, Oxman AD, Akl EA, Kunz R, Vist G, Brozek J, et al. GRADE guidelines: 1.  
507 Introduction—GRADE evidence profiles and summary of findings tables. *Journal of clinical*  
508 *epidemiology*. 2011;64(4):383-94.
- 509 24. Hulshof CT, Colosio C, Daams JG, Ivanov ID, Prakash K, Kuijer PP, et al. WHO/ILO work-related  
510 burden of disease and injury: Protocol for systematic reviews of exposure to occupational ergonomic  
511 risk factors and of the effect of exposure to occupational ergonomic risk factors on osteoarthritis of  
512 hip or knee and selected other musculoskeletal diseases. *Environment international*. 2019;125:554-  
513 66.
- 514 25. Petereit-Haack G, Bolm-Audorff U, Romero Starke K, Seidler A. Occupational Risk for Post-  
515 Traumatic Stress Disorder and Trauma-Related Depression: A Systematic Review with Meta-Analysis.  
516 *International Journal of Environmental Research and Public Health*. 2020;17(24):9369.
- 517 26. Zijdeman R, Ribeira da Silva F. Life Expectancy at Birth (Total). V1 ed: IISH Data Collection;  
518 2015.
- 519 27. Antwi-Amoabeng D, Beutler B, Awad M, Kanji Z, Mahboob S, Ghuman J, et al.  
520 Sociodemographic predictors of outcomes in COVID-19: examining the impact of ethnic disparities in  
521 Northern Nevada. *medRxiv*. 2020.
- 522 28. Argenziano M, Bruce S, Slater C. Characterization and Clinical Course of 1000 Patients with  
523 COVID-19 in New York: retrospective case series. *medRxiv*. 2020:10.1101.
- 524 29. Azar KMJ, Shen Z, Romanelli RJ, Lockhart SH, Smits K, Robinson S, et al. Disparities In  
525 Outcomes Among COVID-19 Patients In A Large Health Care System In California. *Health Aff*  
526 (Millwood). 2020;39(7):1253-62.
- 527 30. Baqui P, Bica I, Marra V, Ercole A, van der Schaar M. Ethnic and regional variations in hospital  
528 mortality from COVID-19 in Brazil: a cross-sectional observational study. *Lancet Glob Health*.  
529 2020;8(8):e1018-e26.
- 530 31. Bello-Chavolla OY, Bahena-López JP, Antonio-Villa NE, Vargas-Vázquez A, González-Díaz A,  
531 Márquez-Salinas A, et al. Predicting Mortality Due to SARS-CoV-2: A Mechanistic Score Relating  
532 Obesity and Diabetes to COVID-19 Outcomes in Mexico. *The Journal of clinical endocrinology and*  
533 *metabolism*. 2020;105(8):dgaa346.
- 534 32. Bi Q, Hong C, Meng J, Wu Z, Zhou P, Ye C, et al. Characterizing clinical progression of COVID-  
535 19 among patients in Shenzhen, China: an observational cohort study. *medRxiv*.  
536 2020:2020.04.22.20076190.
- 537 33. Boulle A, Davies M-A, Hussey H, Ismail M, Morden E, Vundle Z, et al. Risk factors for COVID-  
538 19 death in a population cohort study from the Western Cape Province, South Africa. *Clinical*  
539 *infectious diseases : an official publication of the Infectious Diseases Society of America*.  
540 2020:ciaa1198.
- 541 34. Burn E, Tebe C, Fernandez-Bertolin S, Aragon M, Recalde M, Roel E, et al. The natural history  
542 of symptomatic COVID-19 in Catalonia, Spain: a multi-state model including 109,367 outpatient  
543 diagnoses, 18,019 hospitalisations, and 5,585 COVID-19 deaths among 5,627,520 people. *medRxiv*.  
544 2020:2020.07.13.20152454.
- 545 35. Carrillo-Vega MF, Salinas-Escudero G, García-Peña C, Gutiérrez-Robledo LM, Parra-Rodríguez  
546 L. Early estimation of the risk factors for hospitalization and mortality by COVID-19 in Mexico. *PLOS*  
547 *ONE*. 2020;15(9):e0238905.
- 548 36. Carter B, Collins JT, Barlow-Pay F, Rickard F, Bruce E, Verduri A, et al. Nosocomial COVID-19  
549 infection: examining the risk of mortality. The COPE-Nosocomial Study (COVID in Older PEople). *The*  
550 *Journal of hospital infection*. 2020;106(2):376-84.

- 551 37. Chen J, Bai H, Liu J, Chen G, Liao Q, Yang J, et al. Distinct Clinical Characteristics and Risk  
552 Factors for Mortality in Female Inpatients With Coronavirus Disease 2019 (COVID-19): A Sex-  
553 stratified, Large-scale Cohort Study in Wuhan, China. *Clinical Infectious Diseases*. 2020.  
554 38. Chhiba KD, Patel GB, Vu THT, Chen MM, Guo A, Kudlaty E, et al. Prevalence and  
555 characterization of asthma in hospitalized and nonhospitalized patients with COVID-19. *J Allergy Clin*  
556 *Immunol*. 2020;146(2):307-14.e4.  
557 39. Chilimuri S, Sun H, Alemam A, Mantri N, Shehi E, Tejada J, et al. Predictors of Mortality in  
558 Adults Admitted with COVID-19: Retrospective Cohort Study from New York City. *West J Emerg Med*.  
559 2020;21(4):779-84.  
560 40. Ciardullo S, Zerbini F, Perra S, Muraca E, Cannistraci R, Lauriola M, et al. Impact of diabetes  
561 on COVID-19-related in-hospital mortality: a retrospective study from Northern Italy. *J Endocrinol*  
562 *Invest*. 2020.  
563 41. Conversano A, Melillo F, Napolano A, Fominskiy E, Spessot M, Ciceri F, et al. Renin-  
564 Angiotensin-Aldosterone System Inhibitors and Outcome in Patients With SARS-CoV-2 Pneumonia: A  
565 Case Series Study. *Hypertension*. 2020;76(2):e10-e2.  
566 42. Costa Monteiro AC, Suri R, Emeruwa IO, Stretch RJ, Cortes Lopez RY, Sherman A, et al.  
567 Obesity and Smoking as Risk Factors for Invasive Mechanical Ventilation in COVID-19: a  
568 Retrospective, Observational Cohort Study. *medRxiv*. 2020:2020.08.12.20173849.  
569 43. Cummings MJ, Baldwin MR, Abrams D, Jacobson SD, Meyer BJ, Balough EM, et al.  
570 Epidemiology, clinical course, and outcomes of critically ill adults with COVID-19 in New York City: a  
571 prospective cohort study. *Lancet*. 2020.  
572 44. Di Castelnuovo A, Bonaccio M, Costanzo S, Gialluisi A, Antinori A, Berselli N, et al. Common  
573 cardiovascular risk factors and in-hospital mortality in 3,894 patients with COVID-19: survival analysis  
574 and machine learning-based findings from the multicentre Italian CORIST Study. *Nutr Metab*  
575 *Cardiovasc Dis*. 2020;30(11):1899-913.  
576 45. Docherty AB, Harrison EM, Green CA, Hardwick HE, Pius R, Norman L, et al. Features of 20  
577 133 UK patients in hospital with covid-19 using the ISARIC WHO Clinical Characterisation Protocol:  
578 prospective observational cohort study. *Bmj*. 2020;369:m1985.  
579 46. Du R, Liang L, Yang C, Li M, Guo G, van Halm-Lutterodt N, et al. Patient Predisposition at  
580 Hospital Admission Indirectly Dictates Disease Severity, Clinical Course and Outcomes of COVID-19  
581 Pneumonia Patients in Wuhan, China. *SSRN*. 2020.  
582 47. Ebinger JE, Achamallah N, Ji H, Claggett BL, Sun N, Botting P, et al. Pre-existing traits  
583 associated with Covid-19 illness severity. *PloS one*. 2020;15(7):e0236240-e.  
584 48. Giacomelli A, Ridolfo AL, Milazzo L, Oreni L, Bernacchia D, Siano M, et al. 30-day mortality in  
585 patients hospitalized with COVID-19 during the first wave of the Italian epidemic: A prospective  
586 cohort study. *Pharmacological Research*. 2020;158:104931.  
587 49. Giannouchos TV, Sussman RA, Mier JM, Poulas K, Farsalinos K. Characteristics and risk factors  
588 for COVID-19 diagnosis and adverse outcomes in Mexico: an analysis of 89,756 laboratory-confirmed  
589 COVID-19 cases. *Eur Respir J*. 2020.  
590 50. Grasselli G, Greco M, Zanella A, Albano G, Antonelli M, Bellani G, et al. Risk Factors  
591 Associated With Mortality Among Patients With COVID-19 in Intensive Care Units in Lombardy, Italy.  
592 *JAMA Intern Med*. 2020;180(10):1345-55.  
593 51. Gu T, Chu Q, Yu Z, Fa B, Li A, Xu L, et al. History of coronary heart disease increased the  
594 mortality rate of patients with COVID-19: a nested case-control study. *BMJ Open*.  
595 2020;10(9):e038976.  
596 52. Gu T, Mack JA, Salvatore M, Prabhu Sankar S, Valley TS, Singh K, et al. Characteristics  
597 Associated With Racial/Ethnic Disparities in COVID-19 Outcomes in an Academic Health Care System.  
598 *JAMA Network Open*. 2020;3(10):e2025197-e.  
599 53. Gupta S, Hayek SS, Wang W, Chan L, Mathews KS, Melamed ML, et al. Factors Associated  
600 With Death in Critically Ill Patients With Coronavirus Disease 2019 in the US. *JAMA Intern Med*.  
601 2020;180(11):1-12.

- 602 54. Harrison SL, Fazio-Eynullayeva E, Lane DA, Underhill P, Lip GYH. Comorbidities associated  
603 with mortality in 31,461 adults with COVID-19 in the United States: A federated electronic medical  
604 record analysis. *PLOS Medicine*. 2020;17(9):e1003321.
- 605 55. Hashemi N, Viveiros K, Redd WD, Zhou JC, McCarty TR, Bazarbashi AN, et al. Impact of  
606 chronic liver disease on outcomes of hospitalized patients with COVID-19: A multicentre United  
607 States experience. *Liver international : official journal of the International Association for the Study  
608 of the Liver*. 2020;40(10):2515-21.
- 609 56. Hewitt J, Carter B, Vilches-Moraga A, Quinn TJ, Braude P, Verduri A, et al. The effect of frailty  
610 on survival in patients with COVID-19 (COPE): a multicentre, European, observational cohort study.  
611 *The Lancet Public Health*. 2020;5(8):e444-e51.
- 612 57. Hwang J-M, Kim J-H, Park J-S, Chang MC, Park D. Neurological diseases as mortality predictive  
613 factors for patients with COVID-19: a retrospective cohort study. *Neurological sciences : official  
614 journal of the Italian Neurological Society and of the Italian Society of Clinical Neurophysiology*.  
615 2020;41(9):2317-24.
- 616 58. Imam Z, Odish F, Gill I, O'Connor D, Armstrong J, Vanood A, et al. Older age and comorbidity  
617 are independent mortality predictors in a large cohort of 1305 COVID-19 patients in Michigan, United  
618 States. *J Intern Med*. 2020;288(4):469-76.
- 619 59. Jun T, Nirenberg S, Kovatch P, Huang K-l. Sex-specificity of mortality risk factors among  
620 hospitalized COVID-19 patients in New York City: prospective cohort study. *medRxiv*.  
621 2020:2020.07.29.20164640.
- 622 60. Kabarriti R, Brodin NP, Maron MI, Guha C, Kalnicki S, Garg MK, et al. Association of Race and  
623 Ethnicity With Comorbidities and Survival Among Patients With COVID-19 at an Urban Medical  
624 Center in New York. *JAMA Network Open*. 2020;3(9):e2019795-e.
- 625 61. Kalligeros M, Shehadeh F, Mylona EK, Benitez G, Beckwith CG, Chan PA, et al. Association of  
626 Obesity with Disease Severity Among Patients with Coronavirus Disease 2019. *Obesity*.  
627 2020;28(7):1200-4.
- 628 62. Khalil K, Agbontaen K, McNally D, Love A, Mandalia S, Banya W, et al. Clinical characteristics  
629 and 28-day mortality of medical patients admitted with COVID-19 to a central London teaching  
630 hospital. *The Journal of infection*. 2020;81(3):e85-e9.
- 631 63. Killerby M, Link-Gelles R, Haight S, Schrodt C, England L, Gomes D, et al. Characteristics  
632 Associated with Hospitalization Among Patients with COVID-19 — Metropolitan Atlanta, Georgia,  
633 March–April 2020. *MMWR Morbidity and Mortality Weekly Report*. 2020;69.
- 634 64. Kim L, Garg S, O'Halloran A, Whitaker M, Pham H, Anderson EJ, et al. Risk Factors for  
635 Intensive Care Unit Admission and In-hospital Mortality Among Hospitalized Adults Identified  
636 through the US Coronavirus Disease 2019 (COVID-19)-Associated Hospitalization Surveillance  
637 Network (COVID-NET). *Clinical Infectious Diseases*. 2020.
- 638 65. Klang E, Kassim G, Soffer S, Freeman R, Levin MA, Reich DL. Severe Obesity as an  
639 Independent Risk Factor for COVID-19 Mortality in Hospitalized Patients Younger than 50. *Obesity  
640 (Silver Spring)*. 2020.
- 641 66. Lee H-Y, Ahn J, Kang CK, Won S-H, Park J-H, Kang C, et al. Association of Angiotensin II  
642 Receptor Blockers and Angiotensin-Converting Enzyme Inhibitors on COVID-19-Related Outcome.  
643 *SSRN Electronic Journal*. 2020.
- 644 67. Li J, Guo T, Dong D, Zhang X, Chen X, Feng Y, et al. Defining heart disease risk for death in  
645 COVID-19 infection. *QJM: An International Journal of Medicine*. 2020.
- 646 68. Magleby R, Westblade LF, Trzebucki A, Simon MS, Rajan M, Park J, et al. Impact of SARS-CoV-  
647 2 Viral Load on Risk of Intubation and Mortality Among Hospitalized Patients with Coronavirus  
648 Disease 2019. *Clinical infectious diseases : an official publication of the Infectious Diseases Society of  
649 America*. 2020:ciaa851.
- 650 69. Meng Y, Lu W, Guo E, Liu J, Yang B, Wu P, et al. Cancer history is an independent risk factor  
651 for mortality in hospitalized COVID-19 patients: a propensity score-matched analysis. *Journal of  
652 Hematology & Oncology*. 2020;13(1):75.

- 653 70. Merzon E, Tworowski D, Gorohovski A, Vinker S, Golan Cohen A, Green I, et al. Low plasma  
654 25(OH) vitamin D level is associated with increased risk of COVID-19 infection: an Israeli population-  
655 based study. *The FEBS journal*. 2020;10.1111/febs.15495.
- 656 71. Murillo-Zamora E, Hernandez-Suarez CM. Survival in adult inpatients with COVID-19. *Public*  
657 *Health*. 2020.
- 658 72. Narain S, Stefanov DG, Chau AS, Weber AG, Marder G, Kaplan B, et al. Comparative Survival  
659 Analysis of Immunomodulatory Therapy for Coronavirus Disease 2019 Cytokine Storm. *Chest*.  
660 2020:S0012-3692(20)34901-1.
- 661 73. Palaiodimos L, Kokkinidis DG, Li W, Karamanis D, Ognibene J, Arora S, et al. Severe obesity,  
662 increasing age and male sex are independently associated with worse in-hospital outcomes, and  
663 higher in-hospital mortality, in a cohort of patients with COVID-19 in the Bronx, New York.  
664 *Metabolism*. 2020;108:154262.
- 665 74. Patel NG, Bhasin A, Feinglass JM, Belknap SM, Angarone MP, Cohen ER, et al. Clinical  
666 Outcomes of Hospitalized Patients with COVID-19 on Therapeutic Anticoagulants. *medRxiv*.  
667 2020:2020.08.22.20179911.
- 668 75. Perez-Guzman PN, Daunt A, Mukherjee S, Crook P, Forlano R, Kont MD, et al. Clinical  
669 characteristics and predictors of outcomes of hospitalized patients with COVID-19 in a multi-ethnic  
670 London NHS Trust: a retrospective cohort study. *Clin Infect Dis*. 2020.
- 671 76. Petrilli CM, Jones SA, Yang J, Rajagopalan H, O'Donnell L, Chernyak Y, et al. Factors associated  
672 with hospital admission and critical illness among 5279 people with coronavirus disease 2019 in New  
673 York City: prospective cohort study. *Bmj*. 2020;369:m1966.
- 674 77. Price-Haywood EG, Burton J, Fort D, Seoane L. Hospitalization and Mortality among Black  
675 Patients and White Patients with Covid-19. *N Engl J Med*. 2020.
- 676 78. Reilev M, Kristensen KB, Pottgård A, Lund LC, Hallas J, Ernst MT, et al. Characteristics and  
677 predictors of hospitalization and death in the first 11 122 cases with a positive RT-PCR test for SARS-  
678 CoV-2 in Denmark: a nationwide cohort. *International journal of epidemiology*. 2020:dyaa140.
- 679 79. Rossi PG, Marino M, Formisano D, Venturelli F, Vicentini M, Grilli R. Characteristics and  
680 outcomes of a cohort of SARS-CoV-2 patients in the Province of Reggio Emilia, Italy. *medRxiv*.  
681 2020:2020.04.13.20063545.
- 682 80. Salacup G, Lo KB, Gul F, Peterson E, De Joy R, Bhargav R, et al. Characteristics and clinical  
683 outcomes of COVID-19 patients in an underserved-inner city population: A single tertiary center  
684 cohort. *Journal of Medical Virology*. 2020;n/a(n/a).
- 685 81. Sapey E, Gallier S, Mainey C, Nightingale P, McNulty D, Crothers H, et al. Ethnicity and risk of  
686 death in patients hospitalised for COVID-19 infection in the UK: an observational cohort study in an  
687 urban catchment area. *BMJ Open Respiratory Research*. 2020;7(1):e000644.
- 688 82. Seiglie J, Platt J, Cromer SJ, Bunda B, Foulkes AS, Bassett IV, et al. Diabetes as a Risk Factor for  
689 Poor Early Outcomes in Patients Hospitalized With COVID-19. *Diabetes Care*. 2020;43(12):2938-44.
- 690 83. Shah P, Owens J, Franklin J, Mehta A, Heymann W, Sewell W, et al. Demographics,  
691 comorbidities and outcomes in hospitalized Covid-19 patients in rural southwest Georgia. *Ann Med*.  
692 2020;52(7):354-60.
- 693 84. Shi S, Qin M, Shen B, Cai Y, Liu T, Yang F, et al. Association of Cardiac Injury With Mortality in  
694 Hospitalized Patients With COVID-19 in Wuhan, China. *JAMA Cardiology*. 2020.
- 695 85. Soares RdCM, Mattos LR, Raposo LM. Risk Factors for Hospitalization and Mortality due to  
696 COVID-19 in Espírito Santo State, Brazil. *The American journal of tropical medicine and hygiene*.  
697 2020;103(3):1184-90.
- 698 86. Solís P, Carreño H. COVID-19 Fatality and Comorbidity Risk Factors among Diagnosed Patients  
699 in Mexico. *medRxiv*. 2020.
- 700 87. Sousa GJB, Garces TS, Cestari VRF, Florêncio RS, Moreira TMM, Pereira MLD. Mortality and  
701 survival of COVID-19. *Epidemiol Infect*. 2020;148:e123.
- 702 88. Suleyman G, Fadel RA, Malette KM, Hammond C, Abdulla H, Entz A, et al. Clinical  
703 Characteristics and Morbidity Associated With Coronavirus Disease 2019 in a Series of Patients in  
704 Metropolitan Detroit. *JAMA network open*. 2020;3(6):e2012270-e.

- 705 89. Tai S, Tang J, Yu B, Tang L, Wang Y, Zhang H, et al. Association between Cardiovascular  
706 Burden and Requirement of Intensive Care among Patients with Mild COVID-19. *Cardiovascular*  
707 *Therapeutics*. 2020;2020:9059562.
- 708 90. Tartof SY, Qian L, Hong V, Wei R, Nadjafi RF, Fischer H, et al. Obesity and Mortality Among  
709 Patients Diagnosed With COVID-19: Results From an Integrated Health Care Organization. *Annals of*  
710 *internal medicine*. 2020;173(10):773-81.
- 711 91. van Gerwen M, Alsen M, Little C, Barlow J, Genden E, Naymagon L, et al. Risk factors and  
712 outcomes of COVID-19 in New York City; a retrospective cohort study. *J Med Virol*. 2020.
- 713 92. Wang A-L, Zhong X, Hurd Y. Comorbidity and Sociodemographic determinants in COVID-19  
714 Mortality in an US Urban Healthcare System. *medRxiv*. 2020:2020.06.11.20128926.
- 715 93. Wang L, He W, Yu X, Hu D, Bao M, Liu H, et al. Coronavirus disease 2019 in elderly patients:  
716 Characteristics and prognostic factors based on 4-week follow-up. *J Infect*. 2020;80(6):639-45.
- 717 94. Yehia BR, Winegar A, Fogel R, Fakih M, Ottenbacher A, Jessor C, et al. Association of Race  
718 With Mortality Among Patients Hospitalized With Coronavirus Disease 2019 (COVID-19) at 92 US  
719 Hospitals. *JAMA network open*. 2020;3(8):e2018039-e.
- 720 95. Zhao M, Wang M, Zhang J, Gu J, Zhang P, Xu Y, et al. Comparison of clinical characteristics  
721 and outcomes of patients with coronavirus disease 2019 at different ages. *Aging*. 2020;12(11):10070-  
722 86.
- 723 96. Rentsch CT, Kidwai-Khan F, Tate JP, Park LS, King JT, Skanderson M, et al. Covid-19 Testing,  
724 Hospital Admission, and Intensive Care Among 2,026,227 United States Veterans Aged 54-75 Years.  
725 *medRxiv*. 2020:2020.04.09.20059964.
- 726 97. Sterne JAC, Sutton AJ, Ioannidis JPA, Terrin N, Jones DR, Lau J, et al. Recommendations for  
727 examining and interpreting funnel plot asymmetry in meta-analyses of randomised controlled trials.  
728 *BMJ*. 2011;343:d4002.
- 729 98. Page M, Higgins J, Sterne J. Chapter 13: Assessing risk of bias due to missing results in  
730 synthesis. *Cochrane Handbook for Systematic Reviews of Interventions*. Version 6.2 ed: Cochrane;  
731 2021.
- 732 99. Mesas AE, Caverio-Redondo I, Álvarez-Bueno C, Sarriá Cabrera MA, Maffei de Andrade S,  
733 Sequí-Dominguez I, et al. Predictors of in-hospital COVID-19 mortality: A comprehensive systematic  
734 review and meta-analysis exploring differences by age, sex and health conditions. *PLoS One*.  
735 2020;15(11):e0241742.
- 736 100. Monahan C, Macdonald J, Lytle A, Apriceno M, Levy SR. COVID-19 and ageism: How positive  
737 and negative responses impact older adults and society. *American Psychologist*. 2020;75(7):887-96.
- 738

