

# Acute and persistent symptoms in non-hospitalized PCR-confirmed COVID-19 patients

Sofie Bliddal<sup>1,2</sup>, Karina Banasik<sup>3</sup>, Ole Birger Pedersen<sup>4</sup>, Ioanna Nissen<sup>5</sup>, Lisa Cantwell<sup>3</sup>, Michael Schwinn<sup>5</sup>, Morten Tulstrup<sup>6,7</sup>, David Westergaard<sup>3,8,9</sup>, Henrik Ullum<sup>10,11</sup>, Søren Brunak<sup>3</sup>, Niels Tommerup<sup>12</sup>, Bjarke Feenstra<sup>13</sup>, Frank Geller<sup>13</sup>, Sisse Rye Ostrowski<sup>5,11</sup>, Kirsten Grønbaek<sup>6,7,11</sup>, Claus Henrik Nielsen<sup>2,11</sup>, Susanne Dam Nielsen<sup>11,14</sup>, and Ulla Feldt-Rasmussen<sup>1,11\*</sup>

1. Department of Medical Endocrinology and Metabolism, Copenhagen University Hospital (Rigshospitalet), Denmark.
2. Institute for Inflammation Research, Center for Rheumatology and Spine Diseases, Copenhagen University Hospital (Rigshospitalet), Denmark.
3. Novo Nordisk Foundation Center for Protein Research, Faculty of Health and Medical Sciences, University of Copenhagen, Denmark.
4. Department of Clinical Immunology, Zealand University Hospital, Køge, Denmark
5. Department of Clinical Immunology, Copenhagen University Hospital (Rigshospitalet), Denmark
6. Department of Hematology, Rigshospitalet, Copenhagen, Denmark
7. Biotech Research and Innovation Centre, Faculty of Health and Medical Sciences, University of Copenhagen, Copenhagen, Denmark
8. Recurrent Pregnancy Loss Unit, Capital Region, Copenhagen University Hospital, Rigshospitalet, Fertility Clinic 4071, 2100 Copenhagen Ø, and Hvidovre Hospital, 2650 Hvidovre, Denmark
9. Methods and Analysis, Statistics Denmark, 2100 Copenhagen Ø, Denmark
10. Management section, Statens Serum Institut, Copenhagen, Denmark
11. Department of Clinical Medicine, Faculty of Health and Clinical Sciences, Copenhagen University, Denmark.
12. Department of Cellular and Molecular Medicine, University of Copenhagen, Copenhagen, Denmark
13. Department of Epidemiology Research, Statens Serum Institut, Copenhagen, Denmark
14. Department of Infectious Diseases, Copenhagen University Hospital (Rigshospitalet), Denmark.

NOTE: This preprint reports new research that has not been certified by peer review and should not be used to guide clinical practice.

28

29 ¶These authors contributed equally to this work.

30 \*Corresponding author: email: [ufeldt@rh.dk](mailto:ufeldt@rh.dk) (UFR)

31

## Abstract

**Background:** Reports of persistent symptoms after hospitalization with COVID-19 have raised concern of a “long COVID” syndrome. This study aimed at characterizing acute and persistent symptoms in non-hospitalized patients with polymerase chain reaction (PCR) confirmed COVID-19.

**Methods:** Cohort study of 445 non-hospitalized participants identified via the Danish Civil Registration System with a SARS-CoV-2-positive PCR-test and available biobank samples for genetic analyses. Participants received a digital questionnaire on demographics and COVID-19-related symptoms. Persistent symptoms: symptoms >four weeks (in sensitivity analyses >12 weeks).

**Results:** 445 participants were included, of whom 34% were asymptomatic. Most common acute symptoms were fatigue, headache, and sneezing, while fatigue and reduced smell and taste were reported as most severe. Persistent symptoms, most commonly fatigue and memory and concentration difficulties, were reported by 36% of 198 symptomatic participants with follow-up >four weeks. Risk factors for persistent symptoms included female sex (women 44% vs. men 24%, odds ratio 2.7, 95%CI:1.4-5.1, p=0.003) and BMI (odds ratio 1.1, 95%CI:1.0-1.2, p=0.001).

**Conclusion:** Among non-hospitalized PCR-confirmed COVID-19 patients one third were asymptomatic while one third of symptomatic participants had persistent symptoms illustrating the heterogeneity of disease presentation. These findings should be considered in future health care planning and policy making related to COVID-19.

# Introduction

Coronavirus disease 2019 (COVID-19), caused by severe acute respiratory syndrome coronavirus 2 (SARS-CoV-2), has by December 2020 affected more than 82 million people worldwide and has been associated with 2 million deaths leading to a global health and financial crisis [1]. Established risk factors related to dying with the disease include high age, male sex and preexisting comorbidities [2,3,4]. A meta-analysis of 24,410 COVID-19 patients found that the most common symptoms were fever, cough, fatigue, and hyposmia [5]. However, not all exposed individuals catch the disease and not all who have the disease develop symptoms [6,7]. Thus, there is a knowledge gap of individual resilience and risk factors determining the disease trajectory.

In the wake of the initial phase of the COVID-19 pandemic, several observational studies, patient groups and case series have reported persistent symptoms including reduced respiratory capacity [8], fatigue and hyposmia [9,10,11]. In a follow-up study of 143 Italians discharged after hospitalization due to COVID-19, 87.4% still experienced COVID-19-related symptoms at two months after symptom start, and more than half of the patients reported persistent fatigue [12]. Similarly, Jacobs *et al* found that fatigue was the most prevalent symptom 35 days post-hospitalization in 183 participants from the United States, and the majority of participants reported reduced quality of life and both physical and mental health problems [13]. A recent Chinese study presented 6-month follow-up data from 1,733 hospitalized patients, of whom 63% still experienced fatigue and muscle weakness [14]. Clinical and public health interests are therefore no longer limited to information on mortality and clinical outcomes in hospitalized patients, but also to recovery and long-term consequences of COVID-19 post-hospitalization. Among other initiatives, this has led to the Post-Hospitalization COVID-19 study (PHOSP-COVID) in the United Kingdom aiming at long-term follow-up of 10,000 patients discharged after hospitalization due to COVID-19 [15]. The increasing awareness of persistent symptoms among COVID-19 patients has even led to the designation “long COVID” which is yet to be clearly defined [16,17,18]. A recent first draft guideline on long-term effects of COVID-19 published by the National Institute of Health and Care Excellence (NICE) suggests to use the definition “ongoing symptomatic COVID-19” for symptoms lasting between 4 and 12 weeks after the acute onset and “post-COVID-19-syndrome” for symptoms lasting more than 12 weeks [19].

Most studies on COVID-19 symptoms have recruited participants among hospitalized patients or patients attending outpatient clinics or specialized units, or support groups dealing with the consequences of COVID-19 [5,9,20,21]. This confers a selection bias likely overestimating the true prevalence of symptoms and symptom severity. Thus, there is an academic knowledge gap in symptomatology among unselected non-hospitalized patients.

The aim of the present study was to determine the nature and prevalence of acute and persistent symptoms in non-hospitalized patients with COVID-19 confirmed by a positive SARS-CoV-2 PCR.

## Materials and Methods

### Participants

All individuals registered in the Danish Civil Registration System with a COVID-19 diagnosis confirmed by polymerase chain reaction (PCR) for SARS-CoV-2 by August 12<sup>th</sup> 2020 and an available biobank sample for genetic analyses (n=4,421) were invited via the national digital postbox, e-Boks, to participate in a study on genetics in COVID-19 and related outcomes. The e-Boks is a secure digital postbox used by 92.1% of the Danish adult population by the second quarter of 2020 [22]. A list of SARS-CoV-2 positive individuals was obtained from the Danish Microbiology (MiBa) database, which holds data for all SARS-CoV-2 PCR-tests in Denmark, provided by the Danish Health Data Authority [23,24]. Relevant biobank samples with sufficient material for genetic analyses were identified among stored samples in the Danish National Biobank or the Copenhagen Hospital Biobank [25,26].

Invitations were sent to participants via e-Boks between June 24<sup>th</sup> and August 15<sup>th</sup> 2020 together with written project information and a link to a questionnaire on demographic data and symptomatology related to COVID-19. Interested participants could contact a call center between July 27<sup>th</sup> and August 28<sup>th</sup> 2020 to receive oral information on the project and provide oral consent prior to receiving a digital link for written consent. The last questionnaire was received digitally by October 31<sup>st</sup> 2020.

## 101 **Inclusion criteria**

102 All individuals in the Danish Civil Registration System with a PCR-confirmed positive test for SARS-CoV-2  
103 and an available biobank sample for genetic analyses with no history of hospitalization due to COVID-19 were  
104 eligible for this study (n=4,421). Hospitalization due to COVID-19 was defined as a hospital admission lasting  
105 longer than 12 hours within 14 days of a positive PCR-test for SARS-CoV-2. Date of COVID-19 diagnosis  
106 and hospitalization status were accessed through the national register for COVID-19 surveillances (EpiMiBa).  
107 Non-hospitalized participants with a valid written consent and a completed questionnaire were included in this  
108 study.

## 109 **Questionnaire**

110 All participants received a link in their e-Boks to a questionnaire with a large number questions on  
111 demographic data as well as history and symptoms related to COVID-19. The questionnaire was to a large  
112 extent based on a previously validated questionnaire used as part of the Danish Blood Donor Study [27].  
113 Questions on lifestyle factors, demographics and co-morbidities included smoking status, height and weight,  
114 occupation, educational level, and the possibility to select the following chronic diseases (using layman terms):  
115 Asthma, allergy (other than asthma), diabetes mellitus, hyperthyroidism, hypothyroidism, high blood pressure,  
116 heart attack, chest pain (angina pectoris), stroke, chronic bronchitis or big lungs or smokers lungs (emphysema,  
117 COPD), osteoarthritis, rheumatoid arthritis, osteoporosis, cancer, other.

118 Queries on symptomatology related to COVID-19 included the questions “Have you had a feeling of being ill  
119 in the period since February 1<sup>st</sup> 2020?” and if “yes” the following symptoms were listed with answer options  
120 of “No”, “Yes, a little”, “Yes, some”, “Yes, a lot”, “Don’t know”: Fever, chills, runny or stuffy nose, reduced  
121 sense of smell, reduced sense of taste, sneezing, sore throat, coughing, shortness of breath, headache, muscle  
122 and joint pain, chest pain, tiredness and exhaustion [fatigue], difficulties concentrating or remembering, lack  
123 of appetite, coloured sputum, red runny eyes, nausea, vomiting, diarrhoea, stomach pain, other. To clarify  
124 persistence of symptoms, the questionnaire included the question “Do you still have symptoms” and if the  
125 participant answered “yes”, the same list of symptoms was provided albeit without the option of ranking the  
126 degree of symptoms.

Symptoms commencing between 28 days before the positive SARS-CoV-2 PCR-test result and 14 days after the test result were included as COVID-19-related symptoms (Supplementary Fig. S1 online). Persistent symptoms were defined as symptoms lasting more than four weeks; these could be ongoing symptoms at the time of filling in the questionnaire in case of a follow-up time of more than four weeks from symptom onset. Alternatively, a stop date could be given in case of a reported symptom lasting more than four weeks from symptom onset to symptom stop. In sensitivity analyses, persistent symptoms lasting more than 12 weeks were explored based on the same selection criteria (12 weeks instead of four weeks). These time limits were in accordance with the time frame for ongoing symptomatic COVID-19 and post-COVID-19-syndrome, respectively, suggested by the National Institute for Health and Care Excellence in the United Kingdom [19].

## Statistics

Demographic data were presented as appropriate by means and standard deviations (SD) or medians and inter-quartile range (IQR). Logistic regression analyses included as covariates: sex (male-female), age, BMI, smoking status (non-smoker vs. ever smoker), comorbidity (yes-no based on composite scores of self-reported chronic disease), work in the health care sector (yes-no), and time to questionnaire (weeks). The latter was included to account for any potential recall bias as the time periods between the PCR test and the questionnaire (in analyses of asymptomatic vs. symptomatic participants) or between the symptom start and the questionnaire (in analyses of persistent vs. no persistent symptoms among symptomatic individuals). Among the health care workers, almost all reported having patient contact [not specified if COVID-related] and thus patient contact was not included in the model. In the logistic regression analyses of risk of acute and persistent symptoms, we used a composite score (any symptom vs no symptom) across all acute and persistent symptoms, respectively. The composite score for acute symptoms included any symptom, regardless of reported severity. P-values reported are based on Welch Two Sample t-test for normally distributed traits and Fisher's Exact for categorical traits. All statistical analyses and preparation of figures were performed by R version 3.5.0 (the R foundation, [www.r-project.org](http://www.r-project.org)).

## 151 **Ethics**

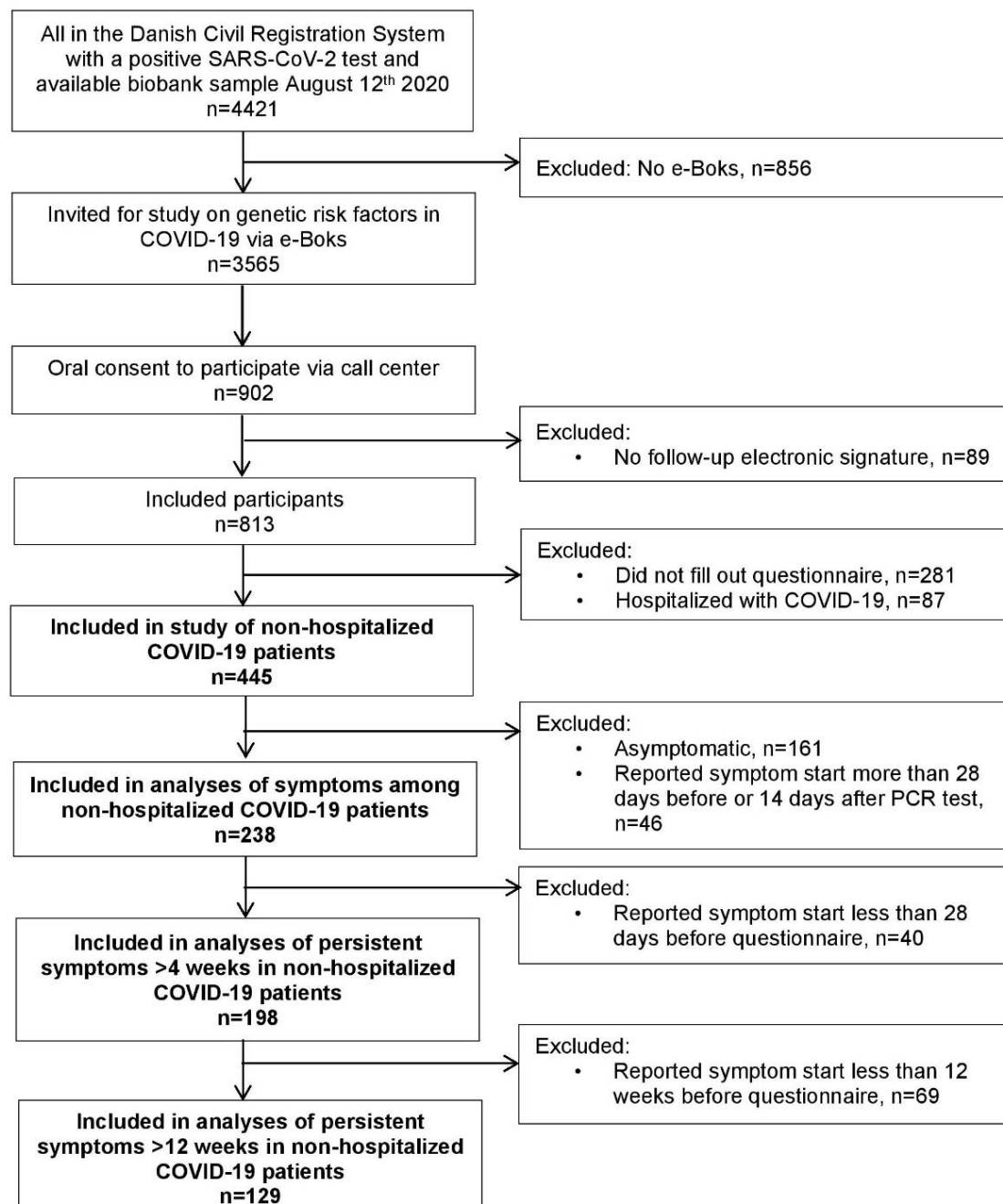
152 The study was part of the “Epidemiology and Genetics of COVID-19” study approved by the National  
153 Committee on Health Research Ethics (ID: NVK 2003947) and by the Data Protection Agency (ID: P-2020-  
154 356). All participants provided oral and written consent to participate.



## Results

A total of 445 Danish non-hospitalized COVID-19 participants were included (see Fig. 1 for flow chart of the inclusion process).

**Figure 1. Flowchart of inclusion process**



Inclusion process of Danes with PCR-confirmed SARS-CoV-2 in study of symptoms among non-hospitalized patients.

**Abbreviations:** e-Boks, secure digital postbox used by 92% of Danes. PCR, polymerase chain reaction. SARS-CoV-2, severe acute respiratory syndrome coronavirus 2.

Most participants had been tested during the Spring of 2020 (Table 1). More women than men participated in the study and significantly more women worked in the health care sector and had patient contact (not specified if COVID-related). Also, the median date for PCR-testing of the included women was one month earlier than that of men (Table 1). There were no other significant differences in demographic data between men and women (Table 1). Less than half of the participants reported preexisting comorbidities; most commonly allergy (28%), hypertension (15%), osteoarthritis (17%), and asthma (8%) (see Supplementary Fig. S2 online).

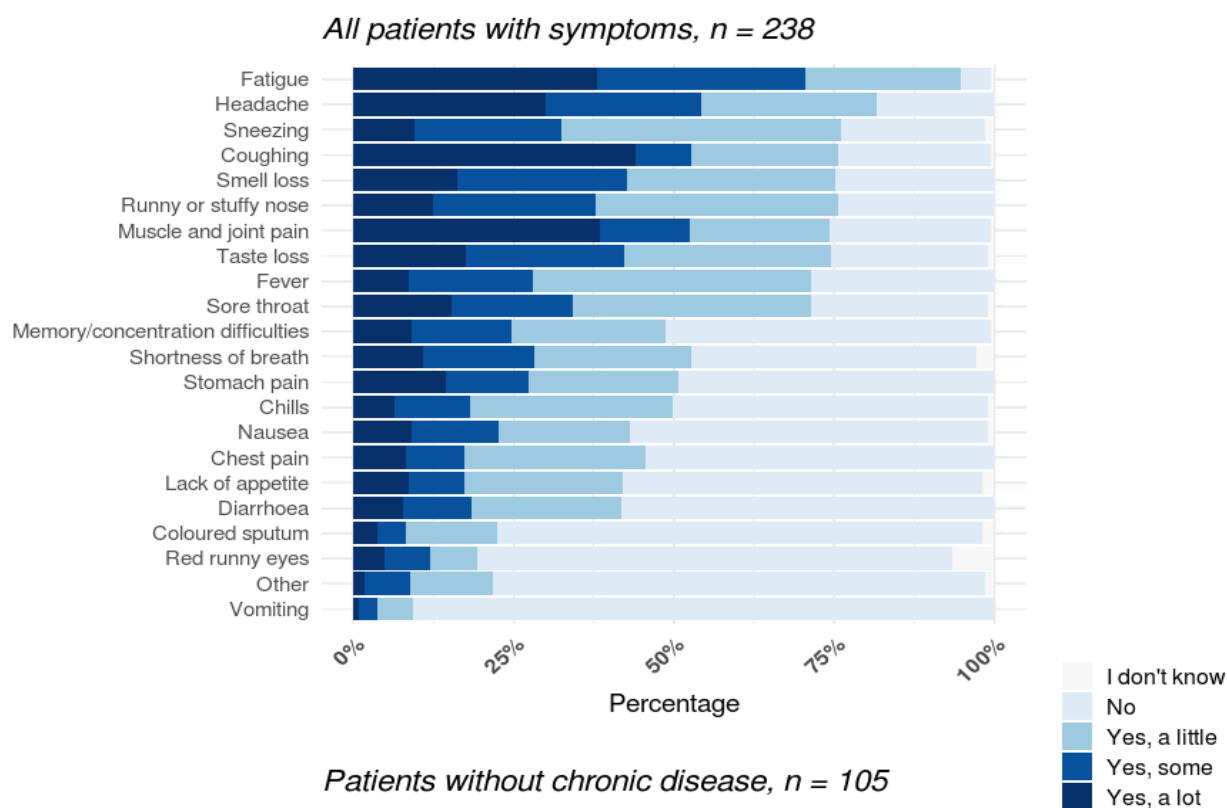
## Acute symptoms

Completely asymptomatic COVID-19 was reported by 34% of participants. There were no significant differences in sex, smoking status, comorbidities, health care worker status or BMI between those reporting symptoms and those without symptoms. Asymptomatic participants had more often been tested towards the end of the study inclusion period (weeks from PCR to questionnaire; adjusted odds ratio (OR) 1.06 95%CI:1.02-1.09,  $p=0.0008$ ) (depicted in Supplementary Fig. S3 online), and were slightly older (OR for symptoms 0.98 (0.97-0.99),  $p=0.004$ ).

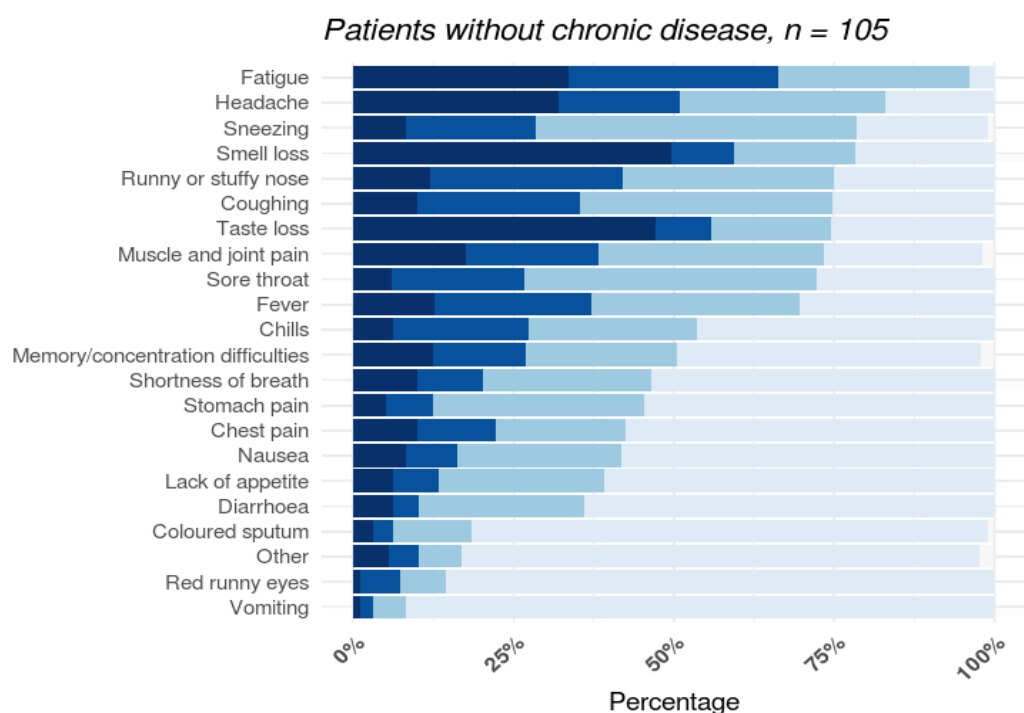
Among the 238 participants experiencing symptoms, 55% of women and 52% of men had a sudden onset of symptoms arising within a few hours. Characteristics of symptomatic participants are presented in Table 2. Significantly more symptomatic women than men were working in the health care system, had contact with patients in their work and had been tested slightly earlier in the year (Table 2). The most common symptoms in the acute phase of COVID-19 were fatigue (95%), headache (82%), and sneezing (76%) (Fig. 2A). However, the symptoms most often reported as being severe were reduced smell, fatigue, and reduced taste (Fig. 2A). Excluding all participants with comorbidities did not change the symptom presentation (Fig. 2B).

186 **Figure 2. Symptom presentation and severity during acute COVID-19 in non-hospitalized patients**

A



B



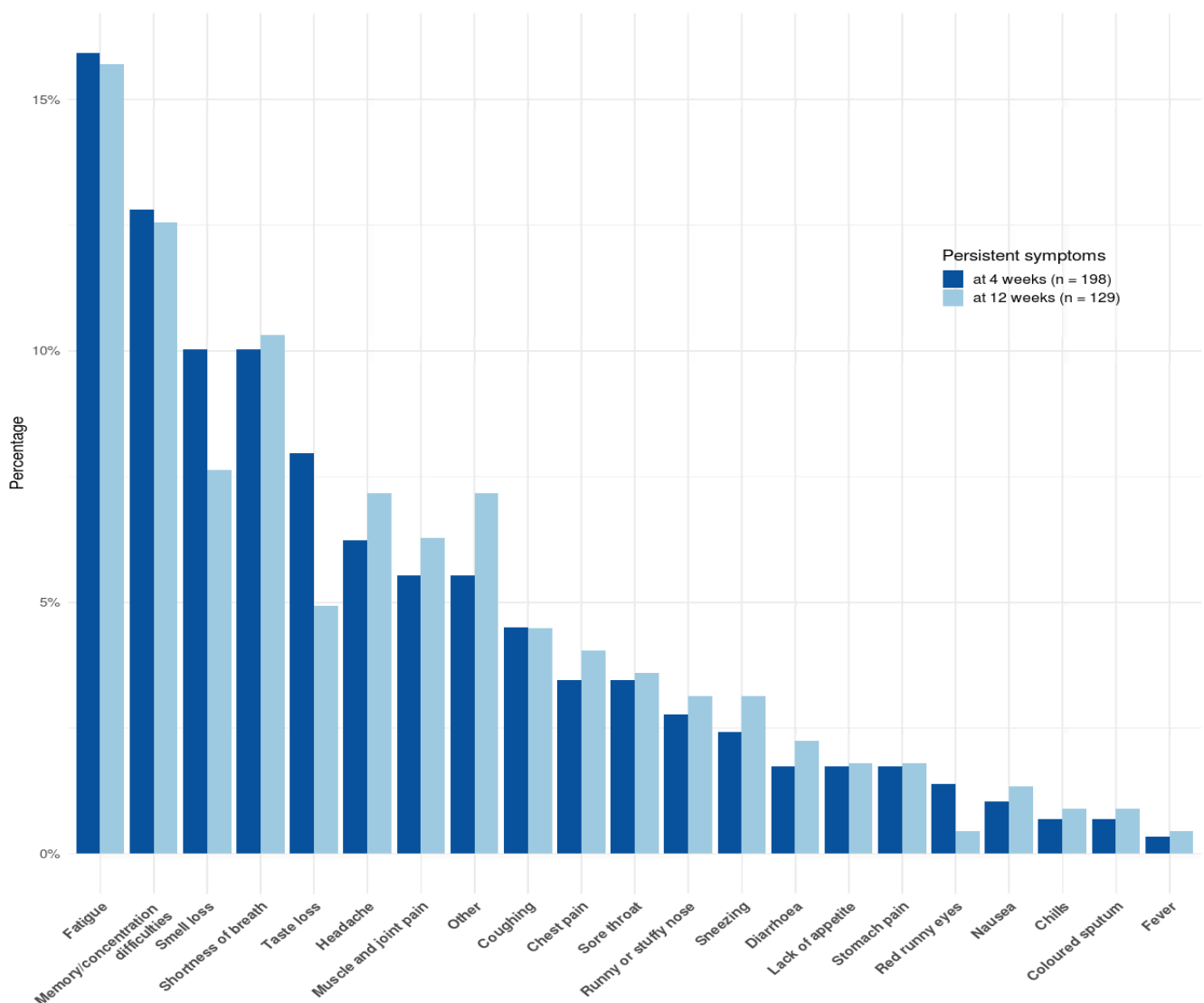
187

188 Symptom pattern and severity reported in relation to the acute phase of COVID-19 by non-hospitalized  
189 participants with a SARS-CoV-2-positive PCR test. Only participants with symptom start between 28 days  
190 before and 14 days after the PCR-test were included. Figure A, all symptomatic participants (n=238). Figure  
191 B, symptomatic participants without comorbidities (n=105).  
192 Abbreviations: PCR, polymerase chain reaction. SARS-CoV-2, severe acute respiratory syndrome coronavirus  
193 2.

## Persistent symptoms

Most symptomatic participants experienced symptom cessation within two weeks (n=137, women in median 14 days (range:1-112), men in median 12 days (1-138)). Ongoing symptoms at the time of filling in the questionnaire were reported by more than 35% of participants (median time from symptom start 90 days (range 5-197)). Follow-up for more than four weeks was available from 198 symptomatic participants among whom persistent symptoms were reported by 36% (44% of women and 24% of men). The most common persistent symptoms were fatigue (16%), concentration or memory difficulties (13%), reduced sense of smell (10%), and shortness of breath (10%) (Fig. 3). Among participants with more than 12 weeks of follow-up since symptom start (n=129), 40% (48% of women and 23% of men) still had symptoms, especially fatigue (16%) and concentration difficulties (13%), following the same pattern as those with a shorter follow-up period (Fig. 3).

**Figure 3. Persistent symptoms in COVID-19 at 4 and 12 weeks**



206 Persistent symptoms after COVID-19. In dark blue, persistent symptoms for more than four weeks in the 198  
207 non-hospitalized participants with symptoms and a follow-up time of more than four weeks and in light blue,  
208 persistent symptoms for more than 12 weeks in the 129 non-hospitalized participants with symptoms and a  
209 follow-up time of more than 12 weeks.  
210

211

212 The risk of persistent symptoms more than four weeks after symptom start was significantly increased in  
213 women compared to men (OR 2.7 95%CI:1.4-5.2,  $p=0.003$  (Table 3)). Furthermore, there was an increased  
214 risk of persistent symptoms with increasing BMI (OR 1.1 95%CI:1.0-1.2,  $p=0.001$  (Table 3)). No other  
215 covariates were significantly associated with the risk of persistent symptoms. Female sex and BMI were also  
216 the only significant risk factors for persistent symptoms in the 129 participants with a follow-up period of more  
217 than 12 weeks (see supplementary Table S1 available online).

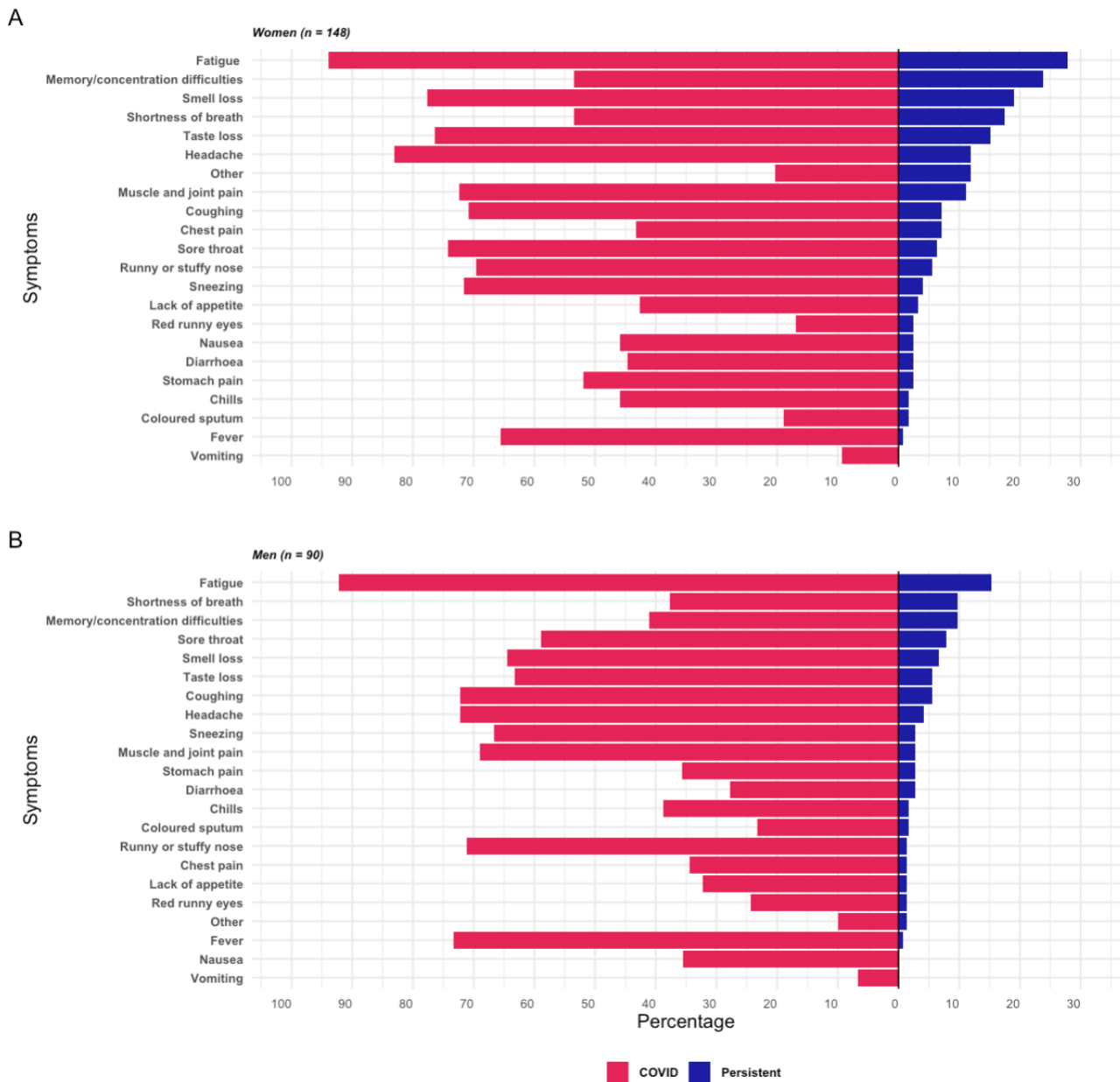
218 More women than men worked in the health care sector (table 1 and 2). Thus, we re-ran analyses of risk factors  
219 for persistent symptoms by only including the 117 women with follow-up of more than four weeks. Doing so,  
220 BMI was still a significant risk factor (adjusted OR 1.2 95%CI:1.1-1.3,  $p=0.003$ ), but being a health care  
221 worker was not (OR 1.5 95%CI:0.6-3.8,  $p=0.39$ ).

222 Furthermore, we depicted acute and persistent symptoms according to sex (Fig. 4). Men and women had a  
223 similar prevalence of fatigue in the acute phase (Fig. 4 left hand side). In participants with persistent symptoms,  
224 fatigue was the most common persistent symptom in both men and women, but the prevalence of persistent  
225 fatigue was almost twice as high in women compared to men (28% vs. 15%, OR 2.2 95%CI:1.0-4.7,  $p=0.05$ ,  
226 right hand side of Fig. 4).

227

228

229 **Figure 4. Acute and persistent symptoms in non-hospitalized men and women with COVID-19**



230

231 The percentage of acute (red panel to the left) and persistent (blue panel to the right) symptoms in non-  
 232 hospitalized COVID-19 participants according to sex. Persistent symptoms were defined as lasting more than  
 233 four weeks. A, prevalence of reported acute (total n=148) and persistent symptoms (total n=126) in women.  
 234 B, prevalence of reported acute (total n=90) and persistent symptoms (total n=72) in men.

235

## Discussion

The present study demonstrated a high prevalence of persistent symptoms in non-hospitalized patients with COVID-19 confirmed by SARS-CoV-2 PCR-testing. The most common persistent symptoms were fatigue and memory and concentration difficulties with a higher risk in women. Furthermore, there was an equally high prevalence of asymptomatic COVID-19 participants.

Unlike most previous studies on COVID-19-related symptoms an important strength of the present study was the recruitment of non-hospitalized participants with a positive SARS-CoV-2 PCR-test. Thus, we were able to depict variations in symptoms even among non-hospitalized participants with a confirmed COVID-19 diagnosis. Contrary to studies relying solely on information gathered through questionnaire data, our use of national register data on SARS-CoV-2 PCR tests and hospitalization strengthens the validity of the study results. However, our study finding of women being at higher risk of persistent symptoms may be biased by the fact that more asymptomatic individuals, especially men, were included towards the end of the inclusion period and were slightly older. This likely reflects both an altered test strategy in Denmark with easier access to targeted testing for mild cases of COVID-19 and screening of close contacts, and a survival bias with a higher risk of hospitalization among older citizens and symptomatic men. In addition, more women worked in the health care sector with patient contact and although this was not associated with an increased risk of persistent symptoms in the present study, larger studies are needed to clarify if the increased risk of persistent symptoms among women could be confounded by specific lines of work. Finally, all studies of COVID-19-related symptoms suffer from an inherent likelihood of attracting participants with a personal experience of severe or persistent symptoms thus risking an overestimation of the true prevalence of persistent symptoms. A similar selection bias may be present in our study, however, likely reduced compared to most studies specifically addressing COVID-19-related symptoms because we specifically invited participants to a study on genetics and not symptoms.

Our finding of fatigue as the most prevalent persistent symptom matches previous studies among post-hospitalized COVID-19 patients suffering from fatigue [9,12,28,29]. To our knowledge, few studies have been published on persistent symptoms in non-hospitalized patients with positive SARS-CoV-2 PCR-tests. Among

263 292 participants interviewed by phone at a median of 16 days post-testing, Tenforde *et al* found 35% of  
264 participants with acute symptoms to still be experiencing symptoms (especially coughing, fatigue and  
265 shortness of breath) [30]. In a study of 180 participants (8 of whom had been hospitalized) interviewed during  
266 the acute phase of disease and at follow-up phone calls, persistent symptoms were reported by 53% of  
267 symptomatic participants at a mean follow-up time of 125 days (most often fatigue, loss of smell and taste,  
268 and arthralgias) [31]. Larger survey-based studies on COVID-19-related symptoms in a multitude of  
269 participants with self-reported COVID-19 are available online, although not yet peer-reviewed (Table 4  
270 presents an overview of studies) [32,33,34,35,36,37]. Characteristic for most of these studies is the acceptance  
271 of self-reported COVID-19 status by participants without laboratory confirmation of COVID-19-status, and  
272 recruitment of participants with the specific aim of COVID-19 symptom reporting likely inferred a substantial  
273 selection bias. However, most studies do report fatigue, concentration problems and loss of smell and taste as  
274 the most common persistent symptoms, which is comparable to our findings in PCR-confirmed COVID-19  
275 non-hospitalized participants. Thus, our study provides substantial laboratory- and registry-confirmed  
276 evidence in support of these symptoms being part of a “long COVID”-syndrome existing even in non-  
277 hospitalized COVID-19 patients.

278  
279 Why SARS-CoV-2 carries a high risk of persistent symptoms, especially in women, is an urgent research  
280 question. Suggested mechanisms fall into two categories of either direct effects from the virus or indirect  
281 effects caused by immune responses to the virus [38]. While persistent symptoms including chronic fatigue  
282 are well-described in other pulmonary infections such as SARS and pneumonia, SARS-CoV-2 may differ in  
283 its multi-organ-affection and high contagiousness [38,39,40,41]. The female preponderance bears  
284 resemblance to that of many autoimmune diseases [42]. Unfortunately, the present study did not have  
285 laboratory data to assess either initial or persistent immunological response against SARS-CoV-2 and did not  
286 have data for retesting for SARS-CoV-2 to ascertain resolution of the viral load in participants with persistent  
287 symptoms. However, previous studies have found a poor correlation between the risk of persistent symptoms  
288 and objective measures of disease despite performing a wide range of clinical and laboratory tests in COVID-  
289 19 patients either during the acute phase or at follow-up [9,28]. Also, a negative SARS-CoV-2 PCR-test as a  
290 sign of recovery has been criticized for not corresponding to the patients’ perception of (or lack of) recovery



[33,35]. Thus, detailed laboratory data and functional studies are urgently needed to understand the immunological component of long COVID.

An important question arising from the present and other studies of long COVID is how to manage these patients with persistent symptoms. Previous studies of chronic fatigue have shown uncertain benefit of treatment such as exercise, cognitive behavioral therapy, and rehabilitation initiatives, and are, nevertheless, not necessarily compatible with post-COVID fatigue [43,44,45]. Several specific management initiatives are emerging for “long COVID” as well as guideline initiatives by the National Institute for Health and Care Excellence in United Kingdom, and guidance material for self-rehabilitation after COVID-19 released by the World Health Organization [9,12,19,46]. Some have argued for the importance of involving general practitioners in the management of this syndrome [47] and some have advocated for the importance of including patients in emerging new strategies [16,48]. A subset of patients has yet to recover after months of symptoms and those patients may need long-term follow-up at specialized units. Thus, an important aspect of future studies on this matter is to identify patients at risk of long-term symptoms. The present study suggests that up to 40% of non-hospitalized previously healthy patients will experience some degree of persistent symptoms with an increased risk in women. Larger studies of big data including real-time symptom reporting will aid in determining risk factors and predicting disease trajectories [34,49]. The mounting evidence of “long COVID” calls for active policy making to secure prevention and early detection, facilitate optimal treatment and support rehabilitation [16,38].

Equally important may be the high proportion of asymptomatic COVID-19 individuals. In the present study 34% of non-hospitalized PCR-confirmed SARS-CoV-2-positive participants reported no symptoms in the acute phase of the disease. However, the overall prevalence of asymptomatic COVID-19 was similar to that estimated in Danish health care workers (assessed by IgM and IgG antibodies against SARS-CoV-2) of 46.5% [50]. Similarly, a study of the Icelandic population found that 43% were asymptomatic at time of a positive SARS-CoV-2 PCR test among participants included in a population screening unlike targeted testing of severely symptomatic individuals [51]. Furthermore, the COVID Symptom Score study prospectively monitored more than 2 million citizens in UK, US and Sweden. In a subset of 26,495 participants with a self-reported positive SARS-CoV-2 PCR-test, 55.3% were asymptomatic [34,49] [numbers deduced from

supplementary files]. Although some studies reported a lower prevalence [31], there did seem to be a general agreement on a true high prevalence of asymptomatic COVID-19. In a recent analytical model based on the assumption that 30% of COVID-patients may be asymptomatic, Johansson *et al* found that asymptomatic individuals would carry 50% of all transmissions [52]. This has important implications for disease control and stresses the need for active tracing and testing of close contacts as part of disease control.

In conclusion, even among non-hospitalized PCR-confirmed SARS-CoV-2-positive participants, more than one third reported persistent symptoms after four and 12 weeks, respectively. The most prevalent persistent symptoms were fatigue and memory and concentration difficulties. Contrary to this, 34% of non-hospitalized patients were asymptomatic in the acute phase of the disease stressing the importance of testing near contacts. The high prevalence of both patients with persistent symptoms and of asymptomatic patients bear witness to the heterogeneity of the disease presentation. Although data should be reproduced due to possible limitations of survival or recall bias, these findings should be taken into account in future health care planning and policy making related to COVID-19 prevention, detection, treatment and follow-up.

## References

1. Johns Hopkins University. The Johns Hopkins Coronavirus Resource Center. <https://coronavirus.jhu.edu/map.html>. (2020).
2. Wu, Z. & McGoogan, J. M. Characteristics of and Important Lessons From the Coronavirus Disease 2019 (COVID-19) Outbreak in China: Summary of a Report of 72314 Cases From the Chinese Center for Disease Control and Prevention. *JAMA*. **323**, 1239-1242 (2020).
3. Huang, C. *et al.* Clinical features of patients infected with 2019 novel coronavirus in Wuhan, China. *Lancet*. **395**, 497-506 (2020).
4. Zheng, Z. *et al.* Risk factors of critical & mortal COVID-19 cases: A systematic literature review and meta-analysis. *J. Infect.* **81**, e16-e25 (2020).
5. Grant, M. C. *et al.* The prevalence of symptoms in 24,410 adults infected by the novel coronavirus (SARS-CoV-2; COVID-19): A systematic review and meta-analysis of 148 studies from 9 countries. *PLoS. One*. **15**, e0234765 (2020).
6. Kronbichler, A. *et al.* Asymptomatic patients as a source of COVID-19 infections: A systematic review and meta-analysis. *Int. J. Infect. Dis.* **98**, 180-186 (2020).
7. Arons, M. M. *et al.* Presymptomatic SARS-CoV-2 Infections and Transmission in a Skilled Nursing Facility. *N. Engl. J. Med.* **382**, 2081-2090 (2020).
8. Fraser, E. Long term respiratory complications of covid-19. *BMJ*. **370**, m3001 (2020).
9. Townsend, L. *et al.* Persistent fatigue following SARS-CoV-2 infection is common and independent of severity of initial infection. *PLoS. One*. **15**, e0240784 (2020).
10. Hopkins, C. *et al.* Six month follow-up of self-reported loss of smell during the COVID-19 pandemic. *Rhinology*. doi: 10.4193/Rhin20.544. Online ahead of print (2020).
11. Fjaeldstad, A. W. Prolonged complaints of chemosensory loss after COVID-19. *Dan. Med. J.* **67** (2020).
12. Carfi, A., Bernabei, R., & Landi, F. Persistent Symptoms in Patients After Acute COVID-19. *JAMA*. **324**, 603-605 (2020).
13. Jacobs, L. G. *et al.* Persistence of symptoms and quality of life at 35 days after hospitalization for COVID-19 infection. *PLoS. One*. **15**, e0243882 (2020).
14. Huang, C. *et al.* 6-month consequences of COVID-19 in patients discharged from hospital: a cohort study. *Lancet*. **Published Online January 8, 2021**, 1-12 (2021).
15. PHOSP-COVID consortium & Leicester University. The Post-hospitalisation COVID-19 study (PHOSP-COVID). <https://www.phosp.org/>. (2020).
16. The Lancet. Facing up to long COVID. *Lancet*. **396**, 1861 (2020).
17. BMJ. Long covid: How to define it and how to manage it. <https://www.bmj.com/content/370/bmj.m3489>. doi: <https://doi.org/10.1136/bmj.m3489> (2020).

- 368 18. Nature. Long COVID: let patients help define long-lasting COVID symptoms. *Nature*. **586**, 170 (2020).
- 369 19. National Institute for Health and Care Excellence. COVID-19 rapid guideline: managing the long-term  
370 effects of COVID-19. [https://www.nice.org.uk/guidance/ng188/chapter/1-Identifying-people-](https://www.nice.org.uk/guidance/ng188/chapter/1-Identifying-people-with-ongoing-symptomatic-COVID-19-or-post-COVID-19-syndrome)  
371 [with-ongoing-symptomatic-COVID-19-or-post-COVID-19-syndrome](https://www.nice.org.uk/guidance/ng188/chapter/1-Identifying-people-with-ongoing-symptomatic-COVID-19-or-post-COVID-19-syndrome). (2020).
- 372 20. Meys, R. *et al.* Generic and Respiratory-Specific Quality of Life in Non-Hospitalized Patients with  
373 COVID-19. *J. Clin. Med.* **9**, 3993 (2020).
- 374 21. Ladds, E. *et al.* Persistent symptoms after Covid-19: qualitative study of 114 "long Covid" patients and  
375 draft quality principles for services. *BMC. Health Serv. Res.* **20**, 1144 (2020).
- 376 22. The Danish Digitization Agency. Statistics on Digital Post. [https://digst.dk/it-loesninger/digital-](https://digst.dk/it-loesninger/digital-post/om-loesningen/tal-og-statistik-om-digital-post/)  
377 [post/om-loesningen/tal-og-statistik-om-digital-post/](https://digst.dk/it-loesninger/digital-post/om-loesningen/tal-og-statistik-om-digital-post/). (2020).
- 378 23. Voldstedlund, M., Haarh, M., & Molbak, K. The Danish Microbiology Database (MiBa) 2010 to 2013.  
379 *Euro. Surveill.* **19**, 20667 (2014).
- 380 24. Statens Serum Institut. the Danish Microbiology Database. <https://miba.ssi.dk/service/english>. (2021).
- 381 25. Statens Serum Institut. The Danish National Biobank. <https://www.danishnationalbiobank.com/>.  
382 (2020).
- 383 26. The Capital Region of Denmark. The Copenhagen Hospital Biobank. [https://www.regionh.](https://www.regionh.dk/forskning-og-innovation/Region-Hovedstadens-biobank/Sider/default.aspx)  
384 [dk/forskning-og-innovation/Region-Hovedstadens-biobank/Sider/default.aspx](https://www.regionh.dk/forskning-og-innovation/Region-Hovedstadens-biobank/Sider/default.aspx). (2020).
- 385 27. Pedersen, O. B. *et al.* SARS-CoV-2 infection fatality rate among elderly retired Danish blood donors - A  
386 cross-sectional study. *Clin. Infect. Dis.* Online ahead of print (2020).
- 387 28. van den Borst, B. *et al.* Comprehensive health assessment three months after recovery from acute  
388 COVID-19. *Clin. Infect. Dis.* Online ahead of print (2020).
- 389 29. Mandal, S. *et al.* 'Long-COVID': a cross-sectional study of persisting symptoms, biomarker and imaging  
390 abnormalities following hospitalisation for COVID-19. *Thorax*. Online ahead of print (2020).
- 391 30. Tenforde, M. W. *et al.* Symptom Duration and Risk Factors for Delayed Return to Usual Health Among  
392 Outpatients with COVID-19 in a Multistate Health Care Systems Network - United States,  
393 March-June 2020. *MMWR Morb. Mortal. Wkly. Rep.* **69**, 993-998 (2020).
- 394 31. Petersen, M. S. *et al.* Long COVID in the Faroe Islands - a longitudinal study among non-hospitalized  
395 patients. *Clin. Infect. Dis.* Online ahead of print (2020).
- 396 32. Cirulli, E. T. *et al.* Long-term COVID-19 symptoms in a large unselected population. [https://www.](https://www.medrxiv.org/content/10.1101/2020.10.07.20208702v3)  
397 [medrxiv.org/content/10.1101/2020.10.07.20208702v3](https://www.medrxiv.org/content/10.1101/2020.10.07.20208702v3). (2020).
- 398 33. Davis, H. E. *et al.* Characterizing Long COVID in an International Cohort: 7 Months of Symptoms and  
399 Their Impact. <https://www.medrxiv.org/content/10.1101/2020.12.24.20248802v2>. (2020).
- 400 34. Sudre, C. H. *et al.* Attributes and predictors of Long-COVID: analysis of COVID cases and their  
401 symptoms collected by the Covid Symptoms Study App. [https://www.medrxiv.org/content/10.](https://www.medrxiv.org/content/10.1101/2020.10.19.20214494v2)  
402 [1101/2020.10.19.20214494v2](https://www.medrxiv.org/content/10.1101/2020.10.19.20214494v2). (2020).

- 403 35. Patient-Led Research for COVID-19. Report: What Does COVID-19 Recovery Actually Look Like?  
404 <https://patientresearchcovid19.com/research/report-1/>. (2021).
- 405 36. Goertz, Y. M. J. *et al.* Persistent symptoms 3 months after a SARS-CoV-2 infection: the post-COVID-19  
406 syndrome? *ERJ. Open. Res.* **6**, doi.org/10.1183/23120541.00542-2020 (2020).
- 407 37. Walsh-Messinger, J. *et al.* The Kids Are Not Alright: A Preliminary Report of Post-COVID Syndrome in  
408 University Students. <https://www.medrxiv.org/content/10.1101/2020.11.24.20238261v2.full.pdf>. (2020).  
409
- 410 38. Nature Medicine. Meeting the challenge of long COVID. *Nat. Med.* **26**, 1803 (2020).
- 411 39. Metlay, J. P. *et al.* Measuring symptomatic and functional recovery in patients with community-acquired  
412 pneumonia. *J. Gen. Intern. Med.* **12**, 423-430 (1997).
- 413 40. Lam, M. H. *et al.* Mental morbidities and chronic fatigue in severe acute respiratory syndrome survivors:  
414 long-term follow-up. *Arch. Intern. Med.* **169**, 2142-2147 (2009).
- 415 41. Tansey, C. M. *et al.* One-year outcomes and health care utilization in survivors of severe acute  
416 respiratory syndrome. *Arch. Intern. Med.* **167**, 1312-1320 (2007).
- 417 42. Billi, A. C., Kahlenberg, J. M., & Gudjonsson, J. E. Sex bias in autoimmunity. *Curr. Opin. Rheumatol.*  
418 **31**, 53-61 (2019).
- 419 43. Turner-Stokes, L. & Wade, D. T. Updated NICE guidance on chronic fatigue syndrome. *BMJ.* **371**,  
420 m4774 (2020).
- 421 44. Larun, L., Brurberg, K. G., Odgaard-Jensen, J., & Price, J. R. Exercise therapy for chronic fatigue  
422 syndrome. *Cochrane. Database. Syst. Rev.* **10**, CD003200 (2019).
- 423 45. Vink, M. & Vink-Niese, A. Could Cognitive Behavioural Therapy Be an Effective Treatment for Long  
424 COVID and Post COVID-19 Fatigue Syndrome? Lessons from the Qure Study for Q-Fever  
425 Fatigue Syndrome. *Healthcare. (Basel).* **8**, 552 (2020).
- 426 46. World Health Organization. Support for Rehabilitation: Self-Management after COVID-19 Related  
427 Illness. <https://www.who.int/publications/m/item/support-for-rehabilitation-self-management-after-covid-19-related-illness>. (2020).  
428
- 429 47. Greenhalgh, T., Knight, M., A'Court, C., Buxton, M., & Husain, L. Management of post-acute covid-19  
430 in primary care. *BMJ.* **370**, m3026 (2020).
- 431 48. Gorna, R. *et al.* Long COVID guidelines need to reflect lived experience. *Lancet.* (2020).
- 432 49. Drew, D. A. *et al.* Rapid implementation of mobile technology for real-time epidemiology of COVID-  
433 19. *Science.* **368**, 1362-1367 (2020).
- 434 50. Iversen, K. *et al.* Risk of COVID-19 in health-care workers in Denmark: an observational cohort study.  
435 *Lancet Infect. Dis.* **20**, 1401-1408 (2020).
- 436 51. Gudbjartsson, D. F. *et al.* Spread of SARS-CoV-2 in the Icelandic Population. *N. Engl. J. Med.* **382**,  
437 2302-2315 (2020).

- 438 52. Johansson, M. A. *et al.* SARS-CoV-2 Transmission From People Without COVID-19 Symptoms. *JAMA*  
439 *Netw. Open.* **4**, e2035057 (2021).  
440  
441

## Acknowledgements

We highly appreciate our collaboration with the Danish COVID-19 Genetic Consortium (Supplementary Appendix 1 online). Work related to the present study was supported by a grant from Sygesikring Danmark (2020-0178) to the Danish COVID-19 Genetic Consortium and by the Independent Research Fund Denmark (0216-00014B to NT). KB, LC, DW, MS and SB (Brunak) acknowledge the Novo Nordisk Foundation (grants NNF17OC0027594 and NNF14CC0001). KG was supported by a grant from the European Hematology Association. SDN received research grants from Novo Nordic Foundation, FSS, Lundbeck Foundation, and Rigshospitalet Research Council. UFR's research salary was supported by a research grant from The Kirsten and Freddy Johansen's Fund. The funding sources had no impact on the planning or conduction of the study or of any work related to this manuscript.

## Author contributions

SB and KB planned and conducted the analyses and drafted the manuscript and revisions. IN, HU, SDN, OBP, SB and MT contributed to the participant inclusion. OBP, SDN, and UFR developed the questionnaire. MS was in charge of project data management. All coauthors contributed to the conception or design of the work, or the acquisition, analysis, or interpretation of data, as well as reviewed and approved the content of the manuscript.

## Additional Information

The authors declare no competing interests.

## Data Availability

The data that support the findings of this study are available from The Danish COVID-19 Genetic Consortium but restrictions apply to the availability of data used under license for the current study, and thus are not publicly available. Data are however available from the authors upon reasonable request and with permission from The Danish COVID-19 Genetic Consortium under Danish legislation.

## Figure legends

### Figure 1. Flowchart of inclusion process

Inclusion process of Danes with PCR-confirmed SARS-CoV-2 in study of symptoms among non-hospitalized patients.

Abbreviations: e-Boks, secure digital postbox used by 92% of Danes. PCR, polymerase chain reaction. SARS-CoV-2, severe acute respiratory syndrome coronavirus 2.

### Figure 2. Symptom presentation and severity during acute COVID-19 in non-hospitalized patients

Symptom pattern and severity reported in relation to the acute phase of COVID-19 by non-hospitalized participants with a SARS-CoV-2-positive PCR test. Only participants with symptom start between 28 days before and 14 days after the PCR-test were included. Figure A, all symptomatic participants (n=238). Figure B, symptomatic participants without comorbidities (n=105).

Abbreviations: PCR, polymerase chain reaction. SARS-CoV-2, severe acute respiratory syndrome coronavirus 2.

### Figure 3. Persistent symptoms in COVID-19 at 4 and 12 weeks

Persistent symptoms after COVID-19. In dark blue, persistent symptoms for more than four weeks in the 198 non-hospitalized participants with symptoms and a follow-up time of more than four weeks and in light blue, persistent symptoms for more than 12 weeks in the 129 non-hospitalized participants with symptoms and a follow-up time of more than 12 weeks.

### Figure 4. Acute and persistent symptoms in non-hospitalized men and women with COVID-19

The percentage of acute (red panel to the left) and persistent (blue panel to the right) symptoms in non-hospitalized COVID-19 participants according to sex. Persistent symptoms were defined as lasting more than four weeks. A, prevalence of reported acute (total n=148) and persistent symptoms (total n=126) in women. B, prevalence of reported acute (total n=90) and persistent symptoms (total n=72) in men.



## Tables

**Table 1. Characteristics of participants**

	<b>Women (n=245)</b>	<b>Men (n=191)</b>	<b>p-value</b>
<b>Age (mean, SD)</b>	45.6 (16.1)	48.7 (16.7)	0.04
<b>BMI (median, IQR)</b>	24.7 (6.9)	25.9 (4.6)	0.42
<b>Smoking (ever, %)</b>	14.2	16.2	0.59
<b>Comorbidity (%)</b>	55.5	56.3	1.00
<b>Work in health care sector (%)</b>	37.8	7.9	$5.7 \times 10^{-14}$
<b>Work with patient contact (%)</b>	36.2	7.3	$1.4 \times 10^{-13}$
<b>Date of positive SARS-CoV-2 test (median, range)</b>	22 May 2020 (8 Mar 2020 – 12 Aug 2020)	21 Jun 2020 (5 Mar 2020 – 12 Aug 2020)	0.001

Characteristics of included men and women with a history of COVID-19 without need of hospitalization confirmed by a SARS-CoV-2-positive PCR.

Abbreviations: BMI, body mass index. IQR, interquartile range. PCR, polymerase chain reaction. SARS-CoV-2, severe acute respiratory syndrome coronavirus 2. SD, standard deviation.

**Table 2. Characteristics of non-hospitalized symptomatic men and women with COVID-19**

	<b>Women (n=148)</b>	<b>Men (n=90)</b>	<b>P-value</b>
<b>Age (mean, SD)</b>	44.0 (15.9)	46.0 (14.8)	0.32
<b>BMI (median, IQR)</b>	24.3 (6.9)	25.5 (4.7)	0.55
<b>Smoking (ever, %)</b>	19.4	15.6	1
<b>Comorbidity (%)</b>	56.0	55.6	1
<b>Work in health care sector (%)</b>	44.0	13.3	$8.0 \times 10^{-7}$
<b>Work with patient contact (%)</b>	42.6	12.2	$6.3 \times 10^{-7}$
<b>Contact to someone with positive test for COVID-19 (%)</b>	49.4	49.1	1
<b>Symptom start within a few hours (%)</b>	55.4	52.2	0.24
<b>Date of positive SARS-CoV-2 test (median, range)</b>	12-May-2020 (10-Mar-2020–12-Aug-2020)	11-Jun-2020 (5-Mar-2020–12-Aug-2020)	0.14
<b>Date of symptom onset (median, range)</b>	7-May-2020 (2-Mar-2020–11-Aug-2020)	11-Jun-2020 (26-Feb-2020–13-Aug-2020)	0.09
<b>Time from symptom start to PCR confirmation, days (median, range)</b>	-2 (-23-6)	-1 (-17-6)	0.67
<b>Time from symptom start to questionnaire, days (median, range)</b>	104 (5-202)	69 (7-176)	0.01
<b>Time from symptom start to stop, days (median, range) (n=137)</b>	14 (1-112)	12 (1-138)	0.06

Characteristics of 238 non-hospitalized symptomatic men and women with a history of COVID-19 confirmed by a SARS-CoV-2-positive PCR-test.

Abbreviations: BMI, body mass index. IQR, interquartile range. PCR, polymerase chain reaction. SARS-CoV-2, severe acute respiratory syndrome coronavirus 2. SD, standard deviation.

509 **Table 3. Risk of persistent symptoms after COVID-19**

	<b>Persistent symptoms (n=72)</b>	<b>No persistent symptoms (n=113)</b>	<b>Odds ratio (95% CI)</b>	<b>p-value</b>	<b>Adjusted odds ratio (95% CI)*</b>	<b>p-value</b>
<b>Sex** (women, %)</b>	76.4%	54.9%	2.66 (1.38-5.14)	0.003	2.91 (1.32-6.39)	0.008
<b>Age (mean (SD))</b>	47.4 (15.2)	45.4 (15.5)	1.01 (0.99-1.03)	0.38	1.00 (0.97-1.03)	0.97
<b>Smoking (ever, %)**</b>	16.7%	15.0%	1.13 (0.50-2.53)	0.84	0.84 (0.30-2.41)	0.75
<b>BMI (median (IQR))</b>	26.8 (8.6)	24.4 (4.3)	1.11 (1.04-1.18)	0.001	1.13 (1.05-1.22)	0.001
<b>Comorbidity (%)</b>	47.2%	42.3%	1.47 (0.77-2.80)	0.26	1.40 (0.68-2.85)	0.36
<b>Work in health care sector (%)</b>	43.1%	29.5%	1.81 (0.98-3.36)	0.08	1.28 (0.58-2.81)	0.54
<b>Time from symptom start to questionnaire (weeks) (median, range)</b>	16 (5-25)	15 (5-27)	1.01 (0.96-1.06)	0.76	0.99 (0.93-1.06)	0.86

510 \*The risk of persistent symptoms vs. no persistent symptoms after four weeks in participants with symptoms  
511 in the acute phase and a minimum of four weeks of follow-up from symptom start (n=198) adjusted for: sex,  
512 age, smoking, BMI, comorbidity and time from symptom start to questionnaire.

513 \*\*Men as reference group.

514 \*\*\*Non-smokers as reference group.

515 Abbreviations: BMI, body mass index. CI, confidence interval. IQR, interquartile range.

516 **Table 4. Overview of studies on persistent symptoms in non-hospitalized COVID-19**

Author	Participants*	Recruitment	Diagnosis of COVID-19	Persistent symptoms				
				Reporting	Definition	Prevalence	Most common	Risk factors
Bliddal (present study)	445 non-hospitalized	PCR-positive cases invited to genetics study	Positive PCR confirmed by national register	Questionnaire at time of inclusion	4 weeks 12 weeks	36% 40%	Fatigue, memory and concentration difficulties, smell loss, shortness of breath	Female, BMI
Cirulli (32) **	233 (8 hospitalized) (3,652 negative controls, 17,474 non-tested)	Population study initiated before COVID-pandemic	Self-reported positive COVID-test	Prospective survey every 4-6 weeks	30 days 60 days 90 days	42.3% 33.8% 24.1%	Anosmia, ageusia, memory loss, and headache	Severity of acute phase, initial dyspnoea
Davis (33)**	3,762 (56.7% non-hospitalized) with illness >28 days	Social media and support groups for long COVID	Suspected or confirmed COVID-19 cases (27% laboratory-confirmed)	Survey distribution via online COVID-19 support groups and social media	28 days 90 days 6 months	100% 96% 65.2%	Fatigue, post-exertional malaise, and cognitive dysfunction	78.9% female responders
Goërtz (36)	2,113 (2,001 non-hospitalized)	Facebook groups for persistent coronavirus and website of Lung Foundation	Confirmed (n=345), symptom-based or suspected COVID-19	Online questionnaire link available in recruitment fora	3 weeks (mean 79±17 days)	99.3%	Fatigue, dyspnoea	Age, number of acute symptoms, previous health status, comorbidities
Patient Research Group (35) **	640 (56.4% no hospital contact)	Online survey on long COVID	Tested for COVID-19 (n=324) or attributing symptoms to COVID-19	Online survey on symptoms and demographics related to COVID-19	Mean ongoing 40 days, recovery 27 days	NA	Shortness of breath, tightness of chest, fatigue, brain fog/concentration challenges (most prevalent at week 4)	76.6% female responders
Petersen (31)	180 (8 hospitalized)	PCR-positive cases invited to long COVID study	Positive PCR	Phone interview(s) at inclusion and follow-up (symptom onset to last interview: mean days 125 (SD 18), range:45-215)	Mean 125 days	53.1% (8.9% severe persistent)	Fatigue, loss of smell and taste, and arthralgias	Number of acute symptoms, age 50-66 years
Sudre (34)**	4,182 incident cases from UK, USA, and Sweden (% hospitalization NA)	Population symptom monitoring during COVID-pandemic	Self-reported positive PCR	Prospective weekly symptom logging in app	4 weeks 8 weeks 12 weeks	13.3% 4.5% 2.3%	Fatigue, headache, dyspnoea and anosmia	Age, BMI, female, hospital assessment
Tenforde (30)	292 outpatients	Random sample of PCR-positive outpatients	Positive PCR at outpatient clinic	Telephone interview 14-21 days after PCR-test	Median 16 (14-21) days	35% of symptomatic participants	Cough, fatigue, congestion, dyspnoea	Age, psychiatric condition, BMI, comorbidities
Walsh-Messinger (37)**	52 students at private university (96 non-COVID students)	Students invited for online survey	Suspected or confirmed (75% PCR-positive)	Online surveys at inclusion	≥28 days	51%	Impaired concentration, headache, rhinitis, exercise intolerance, dyspnoea, sleep impairment, brain fog, appetite loss, fatigue, and chest pain	Female, acute symptom severity

517 \*Not included: Studies of outpatients recruited via COVID-units or specialized clinics due to COVID-19-related symptoms (i.e. smell loss) or follow-up, case  
518 reports or series, studies without hospitalization or symptom status, non-English language. \*\*Study available online included due to relevance despite unpublished  
519 non-peer-reviewed. Abbreviations: NA, not available. PCR, polymerase chain reaction for severe acute respiratory syndrome coronavirus 2.