

Active ingredient 'Better gut microbiome function'

Kathrin Cohen Kadosh¹, Melissa Basso^{1*}, Paul Knytl^{1*}, Nicola Johnstone¹, Jennifer Y F Lau², & Glenn Gibson³

¹*School of Psychology, Faculty of Health and Medical Sciences, University of Surrey, Guildford, UK*

²*Department of Psychology, Institute of Psychiatry Psychology & Neuroscience, King's College London, London, UK*

³*Department of Food and Nutritional Sciences, The University of Reading, Reading, UK*

**Denotes equal contribution*

Funding: This project was funded by the Wellcome Trust and conducted in collaboration with the McPin foundation.

Summary

Background: The human gut microbiome and its effect on brain function and mental health is emerging as an area of intensive research. Both animal and human research point towards adolescence as a sensitive period when the gut-brain axis is fine-tuned, and when we can use dietary intervention to change the microbiome, with long-lasting consequences for mental health. Here we report the results of a systematic review/meta-analysis of microbiota-targeted (psychobiotics) interventions on anxiety in youth, together with a summary of consultation work of youth with lived experience.

Methods: Seven databases were searched (no date cut-offs), and controlled trials in clinical and healthy human samples (age range: 10-24) seeking to reduce anxiety were included. All data on between group-differences post intervention and outcomes were extracted as standard mean differences (SMDs) and pooled together based on a random-effects model.

Findings: 5416 studies were identified, 14 were eligible for the qualitative summary, of which 10 were included in the meta-analyses (total of 324 experimental and 293 control subjects). The heterogeneity I^2 was 12% and the pooled SMD was -0.04 (95% CI: -0.21, 0.14). One study presented with low bias risk whereas 5 with high and 4 with uncertain risk, accounting for that, sensitivities analysis revealed a SMD of -0.16 (95%CI: -0.39, 0.06).

Interpretation: There is currently limited evidence for use of psychobiotics to treat anxiety in youth. However, future progress will require a multidisciplinary research approach, which gives priority to specifying mechanisms in the human models, providing causal understanding and addressing the wider context.

Introduction

This report summarises our work into the effectiveness of using dietary interventions to improve gut microbiome function in young people aged 14-24 years, with a view to reducing anxiety. It combines results of a systematic review and meta-analysis of the relevant scientific literature with a summary of consultation and focus group work of young people with lived experience of anxiety (N= 45).

How does what we eat affect how we feel? Intuitively, it seems right to expect that the one thing that we change about our bodies, on a daily basis, will also have a substantial impact on how we feel. Indeed, in their contribution to this report, just over two thirds of young people with lived experience of clinical levels of anxiety declared that they had previously attempted to influence mental health and well-being with dietary interventions, such as reducing sugar intake or increasing the amount of daily fruit and vegetables eaten, or introducing supplements, such as probiotics and prebiotics, often following the suggestions of family, friends or a GP. For example, Jane¹ said:

"I have anxiety and have been taking probiotics since January for a combo of reasons (gut health, acne, mental health). 100% have noticed a difference and agree that more research in this area is needed".

Mehta added: "I'm really interested in how gut health affects us and I notice it's positive effects personally too, particularly when switching between eating meat and not eating meat and consumption of sugar."

Appreciating the importance of our diet on health and well-being has a long-standing tradition. In a bold statement 2500 years ago, Hippocrates, the father of medicine, stated that *all* disease begins in the gut. A considerable body of research in both human and animal models in the last decade has now largely borne him out, with research repeatedly highlighting the important role that gut microbiota (i.e. the microorganisms that live in the digestive system) play in regulating the brain and subsequent behaviour (Sarkar, Lehto et al. 2016, Sarkar, Harty et al. 2020). This has become a particular research focus within the context of mental health problems such as anxiety or depression (Mayer 2011, Cryan and Dinan 2012, Foster and McVey Neufeld 2013). The gut and the brain are intimately connected via the gut-brain axis, which involves bidirectional communication via neural, endocrine and immune pathways, including the vagus nerve (**Figure 1**), (Grossman 1979, Grenham, Clarke et al. 2011, Mayer, Knight et al. 2014).

¹ All names have been changed

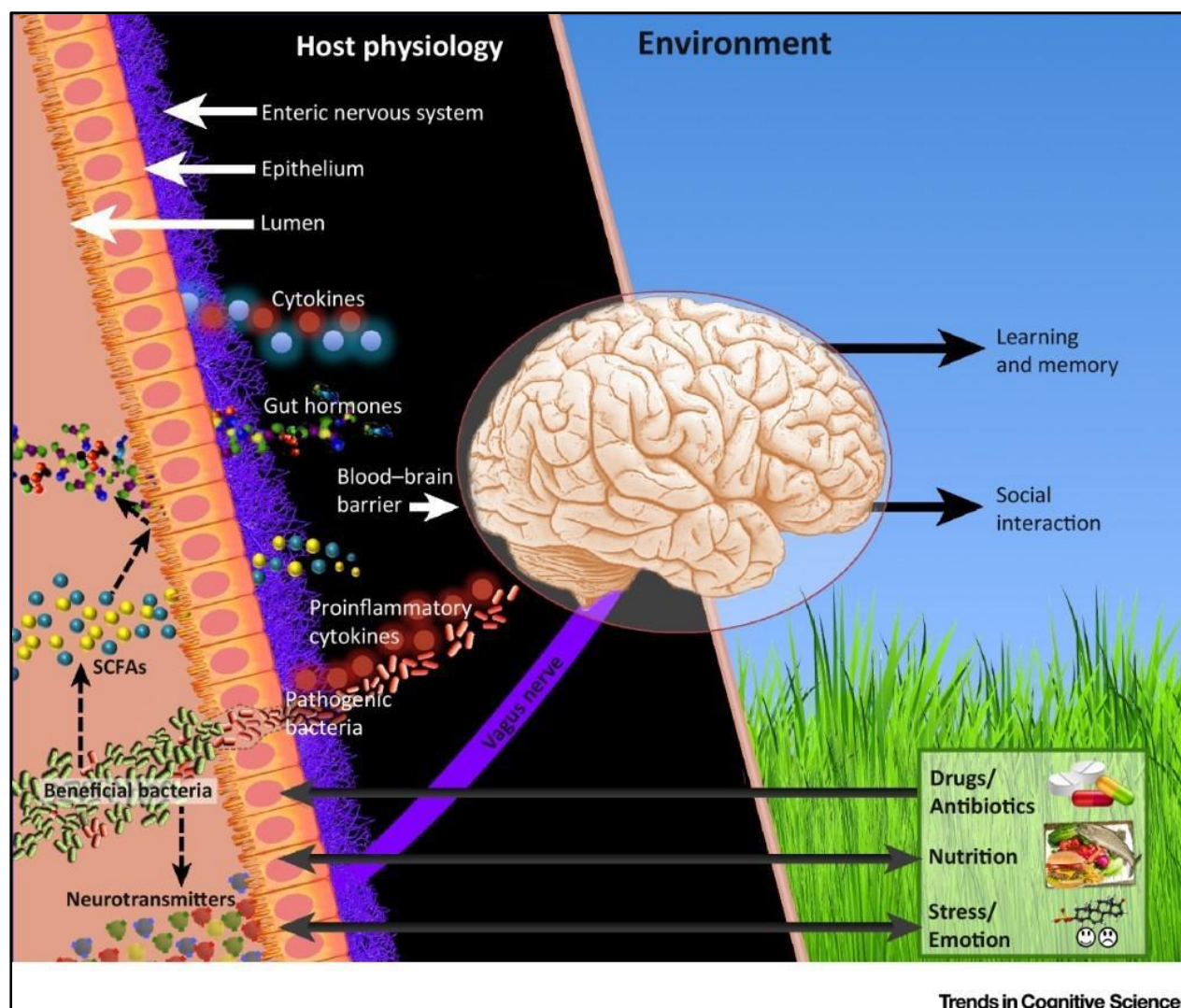


Figure 1: Bacteria–Brain–Behaviour Relationships. Gut bacteria communicate with the brain through various channels. The vagus nerve enables bidirectional communication between the gut and brain. Bacteria produce neurotransmitters as metabolites, and these are able to regulate activity in proximal neurons of the enteric nervous system. Bacteria also produce short-chain fatty acids (SCFAs) via the fermentation of non-digestible dietary fibres. SCFAs can modulate neural activity in the host directly, but they also stimulate the release of gut hormones such as glucagon-like peptide 1 (GLP-1) and peptide tyrosine tyrosine (PYY) which control host appetite and satiety. Beneficial bacteria can also trigger the release of anti-inflammatory cytokines which decrease local and systemic inflammation. However, pathogenic bacteria migrating out of the gut (through a weakened gut barrier) trigger proinflammatory cytokine release. Higher levels of inflammation are correlated with depression, and 'leaky gut' is also associated with depression. Furthermore, experiencing stress – and the attendant glucocorticoid response – can also weaken the gut barrier, potentially worsening the inflammatory pathophysiology of emotional disorders. Diet and the use of drugs and antibiotics also directly modulate composition of gut bacteria, which in turn alter the physiological signals generated. Overall, these bacterially generated signals modulate the central nervous system and affect emotion, cognition, and behaviour. **Re-printed and adapted with permission from Sarkar, 2018.**

Animal research has shown that adolescence is a critical window where microbiota help fine-tune the gut-brain axis (McVey Neufeld, Luczynski et al. 2016) and, given the link between the gut-brain axis and mental health could be one factor for a significant increase in mental health problems during this period (Paus, Keshavan et al. 2008, Keshavan, Giedd et al. 2014). This makes a healthy gut microbiome an important and possibly time-sensitive active ingredient, as interventions during this period may have long-lasting consequences both at the gut microbiome and brain level. However, evidence from human participants for the effectiveness of microbiota-targeted interventions to improve mental health is still outstanding.

One effective way of changing the gut microbiome and gut-brain axis is via nutrition, and it has been shown that drastic changes in diet can alter bacterial diversity in days (David, Maurice et al. 2014). Another method for improving the gut microbiome is the use of psychobiotics. Psychobiotics refer to active compounds capable of acting on the nervous system, consequentially shaping psychological processes, behaviour, and ultimately exerting health benefits in psychiatric conditions (Sarkar, Lehto et al. 2016, Sarkar, Harty et al. 2018). Research has also shown that bacterial dysbiosis (i.e. aberrant functioning of different microorganisms in the gut) may lead to the psychological abnormalities that characterise anxiety (Foster and McVey Neufeld 2013). Therefore, manipulation of the gut microbiome via psychobiotics may present a promising new avenue for treatment and prevention of anxiety in young people (Cryan and Dinan 2012, Sarkar, Lehto et al. 2016) (see **Figure 2** for a proposed pathway). It is not surprising therefore that the microbiome, and its effect on behaviour and mental health has captured the interest and imagination of scientists, clinicians, health professionals and the wider public alike. As a result, research in this relatively new area has intensified, and young people in particular seem very enthusiastic about this line of research, as they see it as an innovative, approachable and critically a non-stigmatising intervention approach. Sonia wrote in her initial assessment of the consultation:

“This is so interesting. We do not receive many requests on the topic of diet, which is a shame because it was one of top 25 questions in our ‘Right People, Right Questions’ (RPRQ) project”.

Note that the RPRQ project was conducted by the McPin foundation whereby children and young people (including those with lived experience of mental health problems), families, professionals and academics identified the top priorities for research in children and young people’s mental health. The fact that diet was selected as a top priority further underlines the importance of gaining a better understanding how it can be used to improve mental health.

In the following, we provide a brief overview of the research conducted in animal models (summarised in **Table 1**) before presenting the results of our systematic review. We will then make

specific suggestions for future research, which integrate the input by the young people with lived experience.

One class of psychobiotics are known as probiotics – live gut bacteria capable of releasing neuroactive substances (Dinan, Stanton et al. 2013), depending on the bacterial strain. For example, the *Bifidobacterium* family is linked to GABA expression in the brain, whereas the *Enterococcus* and *Streptococcus* families are shown to produce serotonin and *Lactobacillus* are linked to GABA and acetylcholine (Sarkar et al., 2016). Research has consistently outlined the psychotropic effects of probiotics. For example, in an animal study, Barrett et al. (Barrett, Ross et al. 2012) showed that *Lactobacillus (L). brevis* and *Bifidobacterium (B.) dentium* increased GABA concentrations in-vitro, a finding which was replicated in an in-vivo model which showed that a *L. brevis* ingested strain regulated emotional behavioural and central GABA receptor expression in a mouse model (Bravo, Forsythe et al. 2011). In this study, mice fed *L. rhamnosus* exhibited reduced GABA mRNA expression in the amygdala, along with lower levels of stress-induced corticosterone and anxiety- and depression-related behaviour. Another study replicated this finding (Janik, Thomason et al. 2016) and showed that increases in GABA metabolites in the brain were evident after about 4 weeks, a lag comparable with other pharmaceutical interventions, such as serotonin-reuptake inhibitors (Kodish, Rockhill et al. 2011). Notably, the same study pointed out that re-colonisation of gut bacteria in adolescent germ-free (GF) mice (i.e. mice without any microorganisms living in or on them) was not sufficient to reverse anxiety-like behaviour, once again suggesting that early deficits in gut microbiota may not be reversible.

Along with probiotics, some prebiotics have lately been also classified as psychobiotics. Prebiotics are specific non-digestible food ingredients (including non-digestible oligosaccharides) which selectively feed intrinsic beneficial bacteria, consequentially stimulating their growth and activity with notable effects on brain development and function (Gibson, Scott et al. 2010, Sarkar, Lehto et al. 2016). To date, fructooligosaccharides (FOS) and galactooligosaccharides (GOS) have been the most studied ones, showing promising effects in animal and human trials (Tarr, Galley et al. 2015, Burokas, Arboleya et al. 2017). In the context of cognitive function specifically, Tarr et al. (2015) have shown that milk oligosaccharides administration can prevent stress-induced dysbiosis and anxiety-like behaviour in mice. Likewise, Burokas et al. (2017) have reported chronic combined FOS and GOS supplementation in mice to have anxiolytic and antidepressant effects, as well as to reduce corticosterone stress response. In addition, prebiotics have been shown to modulate hippocampal and hypothalamus gene expression, and lead to SCFAs concentration changes which positively correlate with the behavioural effects.

A further example of the developmental impact of gut microbiome composition on anxiety has recently been demonstrated in a series of animal models. One study reported that rats' ingestion of pre-gestational *Lactobacillus helveticus* resulted in offspring which then displayed lower rates of anxiety-like behaviour in adolescence (Niu, Liang et al. 2020). In young rats who were experimentally

stressed, those who received a placebo presented with abnormal pubertal timing, whilst those fed *Lactobacillus rhamnosus* and *Lactobacillus helveticus* presented normal timing (Cowan and Richardson 2019). In another study, adolescent mice were injected with the toxin lipopolysaccharide which caused immediate and temporary depression- and anxiety-like behaviour, but also increased stress-sensitivity in adulthood. Compared to placebo, mice who received a mixture of *Lactococcus lactis*, *L. cremoris*, *L. diacetylactis*, *L. acidophilus* around the time of toxin administration displayed shorter duration of immediate negative effects and also did not display as severe stress-responses in adulthood (Murray et al., 2019). These findings support an earlier landmark study (Sudo et al., 2004) which found that adult GF mice had enhanced stress responses which could be reversed by gut colonisation with *Bifidobacterium infantis*. Crucially, the earlier in the lifespan this intervention took place, the more fully normal stress response was restored. Thus, if these promising effects translate to humans, psychobiotics present candidate ingredients which could provide a measure of protection against stress-induced anxiety in adolescents which may carry over into adulthood.

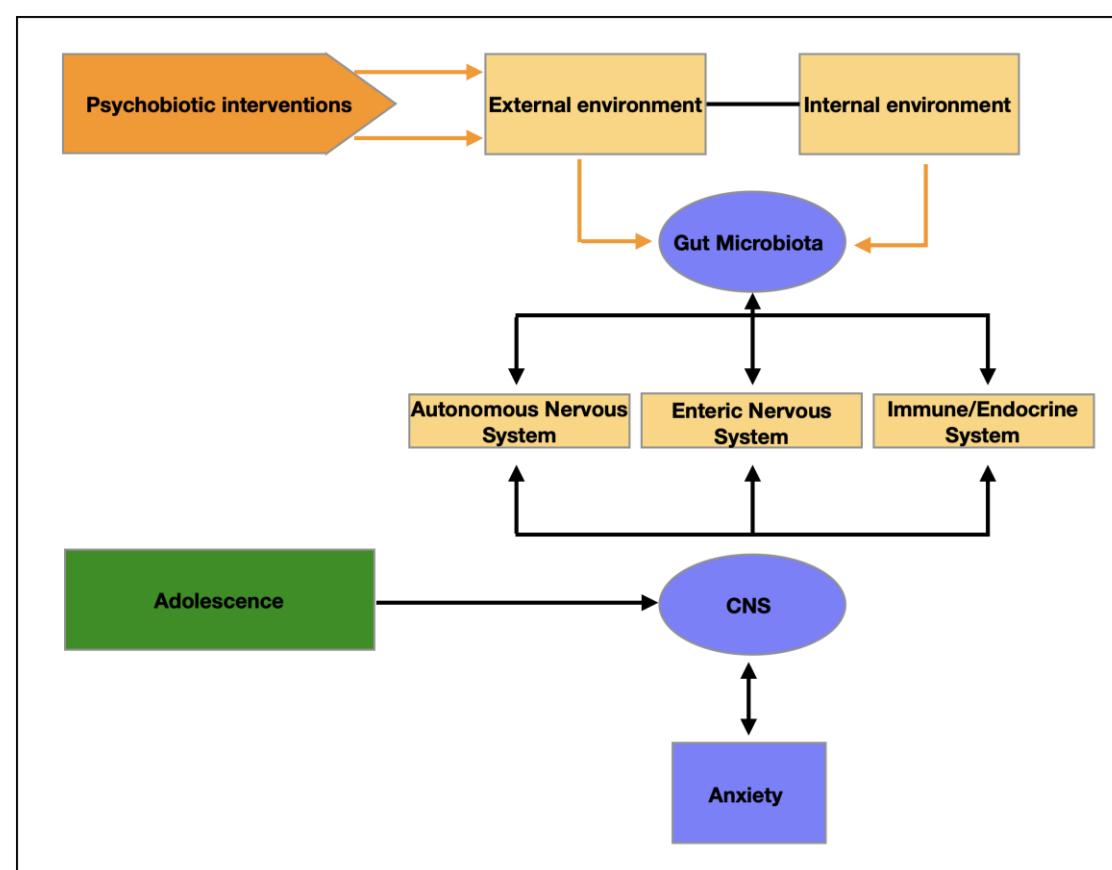


Figure 2: Proposed intervention pathway for the active ingredient. Adolescence is a time period of ongoing neuro-cognitive development, allowing brain structures and circuitries to flexibly adapt- or maladapt to the environment. In this context, gut microbiota might play a causal role as a mediator between the environment and the CNS via multiple pathways. As easily manipulated throughout diet, it could be a promising and cheap therapy target in the redirection of neurodevelopmental trajectories and improving the mental health outcome for the individual.

The effects of probiotic intake on anxiety and stress in adolescence

Here, we report results of a systematic review and meta-analysis which aimed to determine whether psychobiotics conferred either a protective or restorative effect on anxiety and stress in humans aged 14-24. Seven electronic data bases were searched (Cochrane Library, Embase, Medline, PubMed, Psychinfo, Scopus, and Web of Science) using search terms such as minors, adolescent, child, development, paediatric, puberty, young adult, teen, young men, young women, or undergraduate student (please see **Appendix 1** for a complete description of methods and **Appendix 2** for the full search list). The output of this search was 5416 studies, while subsequent screening provided 14 studies, which measured anxiety or stress either directly or as secondary outcomes (**Figure 3**). The results are summarised in **Table 2** and reviewed below.

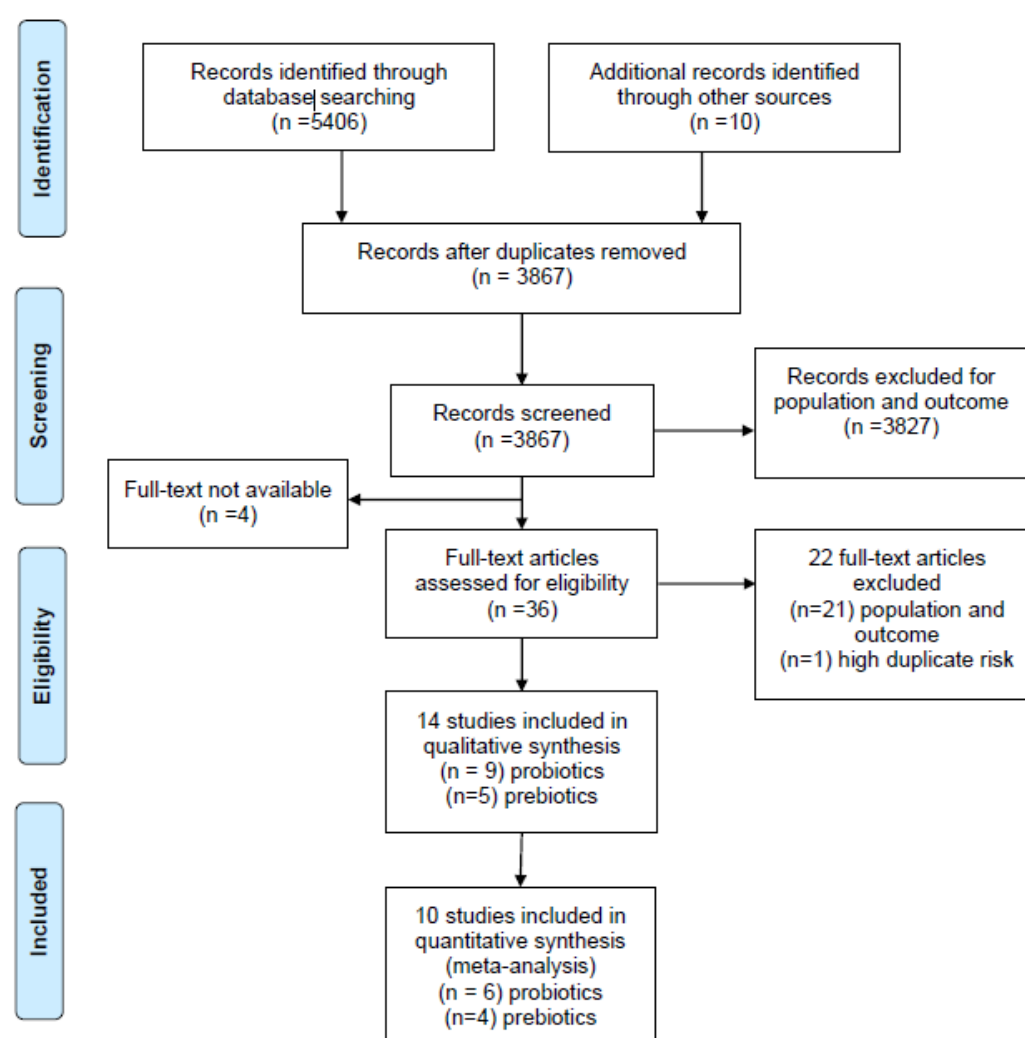


Figure 3: PRISMA flowchart of search results at each step of the systematic review.

The studies we reviewed were quite heterogeneous in the design of the psychobiotic interventions. In the case of probiotics, many different species were used – sometimes alone and sometimes in combination. Of the 9 probiotic studies, 4 used multiple species of probiotics in the same treatment group and one used up to 18 different species in a group (Tran 2019, Tran, Zhebrak et al. 2019). Across the review, species used included *L. plantarum*, *helveticus*, *rhamnosus*, *casei*, *casei* Shirota, *paracasei*, *plantarum*, *bulgaricus*, *delbrueckii bulgaricus*, *acidophilus*; *B. longum*, *bifidum*, *breve*, *infantis*; *Saccharomyces boulardii*; *Streptococcus salivarius thermophilus*; and *Streptococcus thermophilus*. Dose size and frequency and duration of intervention also varied widely. While often on the order of tens of billions of colony-forming units (CFU), doses ranged from 10^9 CFU to 10^{11} CFU, once to twice a day from 14 to 56 days. Similarly, a number of different prebiotic compounds were employed: galactooligosaccharide, fructooligosaccharide, omega-3 polyunsaturated fatty acid, and fermented ginseng. Doses of prebiotics were more comparable, ranging from 1.8 g/day to 5.5 g/day for from 8 to 56 days, however study duration was also quite variable from 8 to 56 days. Furthermore, there was a large degree of outcome heterogeneity. When anxiety was measured in the studies, it was with a number of validated instruments such as the Beck Anxiety Inventory (BAI), State-Trait Anxiety Inventory (STAI), Hospital Anxiety and Depression Scale (HADS), or Penn State Worry Questionnaire (PSWQ). Moreover, a variety of stress measures were used, including salivary cortisol, immunoglobulin A, metanephrine, alpha-amylase; self-reported stress; blood pressure; pulse rate; serum cortisol; urinary 8-hydroxydeoxyguanosine; and performance on a behavioural task. Taken together, this heterogeneity is likely due to the novelty of the field, however it makes direct comparison between studies more challenging. Future studies should focus on systematic replications of the findings reported in these studies and, where applicable, confirmation of effective and tolerable doses needs to be assessed.

Perhaps in part because of heterogeneity in methods employed, the review revealed mixed results for the reduction of stress using probiotics in adolescents. Of 6 probiotic studies which measured anxiety, 5 failed to find a significant effect. The remaining study (Tran, Zhebrak et al. 2019) reported both an improvement in PSWQ and paradoxical worsening on the BAI-Panic subscale. Caution is warranted with this study however, since errors in the statistical analysis in the initial manuscript warranted a subsequent correction which significantly altered the initially promising reported outcome (Tran 2019). By far the most common study design for both pre- and probiotics involved following a cohort of selected and unselected university students before, during, and after final exams (Marcos, Warnberg et al. 2004, Andersson, Tullberg et al. 2016, Culpepper, Christman et al. 2016, Kato-Kataoka, Nishida et al. 2016, Kato-Kataoka, Nishida et al. 2016, Takada, Nishida et al. 2016, Karbownik, Kreczynska et al. 2020). These studies often only used stress or anxiety as a secondary outcome, focussing on stress-related GI problems or immune performance, mostly with salivary cortisol as the main outcome. Here, there was some evidence (this assessment is based on

the statistical analysis) to support *L. casei Shirota* having protective effects on salivary cortisol and self-reported stress in students approaching final exams (Kato-Kataoka, Nishida et al. 2016, Takada, Nishida et al. 2016). A further study from another group reported reduced stress in sleep deprived students after *B. bifidum* administration during exam periods (Culpepper, Christman et al. 2016). About 50% of studies which measured stress in some way found non-significant effects of their probiotic intervention on stress. One study (Karbownik, Kreczynska et al. 2020) even reported increased pulse rate in the probiotic group (*Saccharomyces boulardii*) which could be interpreted as increased physiological stress, although there was no change in self-reported anxiety.

Taken together, the literature revealed that probiotics used had mixed results reducing stress in youth. This makes sense given the large variety of strains available and tested. Furthermore, the literature currently does not support their use in reducing anxiety, and two studies reported adverse effects, e.g. increased BAI (Tran, Zhebrak et al. 2019) and increased pulse rate (Karbownik, Kreczynska et al. 2020).

Prebiotic interventions

Potentially more promising, but less investigated are prebiotic interventions. Of the five studies that met our inclusion criteria, one using galactooligosaccharide (GOS; (Hughes, Davoodi-Semiromi et al. 2011) found no significant effect on participant stress. Another study of girls with *anorexia nervosa* (Manos et al., 2018) reported no significant effect of omega-3 polyunsaturated fatty acid (PUFA)² on anxiety as measured by the Beck Anxiety Inventory-trait (BAIT) - however this may have been due to lack of statistical power (n = 18). A larger study also used PUFA as the active ingredient (n = 68; (Kiecolt-Glaser, Belury et al. 2011) but reported reduced BAIT in otherwise healthy university students. Another small study (n = 16) investigating the effects of fermented ginseng (Kitaoka, Uchida et al. 2009) reported reduced total STAI score in healthy university students. Finally, one study using GOS (Schmidt, Cowen et al. 2015) reported both reduced attention to negatively valenced stimuli (hypervigilance to negative stimuli is associated with anxiety and depression) and decreased salivary cortisol (although STAI was unaffected). Furthermore, unpublished work by our lab replicates this vigilance reducing effect of GOS in adolescent females (Johnstone, Milesi et al. under review), along with a reduction in self-reported trait anxiety levels. Interestingly, in this study, a reduction in self-reported anxiety levels (STAIT) was only found in participants with high trait anxiety, which suggests that prebiotic interventions may be most effective in cases where there is already some evidence of microbiome dysbiosis.

² Note that while prebiotic status of PUFA is not yet universally accepted, new evidence supports the inclusion here: Costantini, L., R. Molinari, B. Farinon and N. Merendino (2017). "Impact of Omega-3 Fatty Acids on the Gut Microbiota." *Int J Mol Sci* **18**(12).

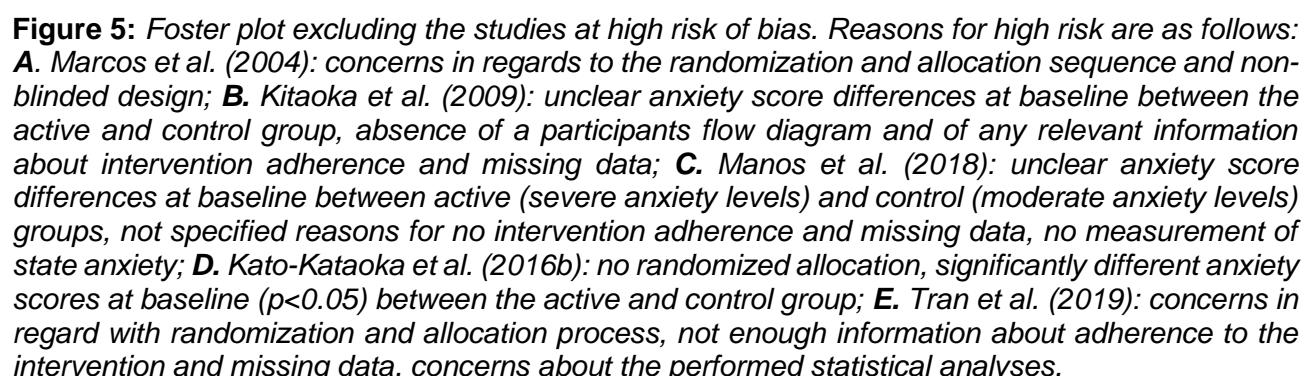
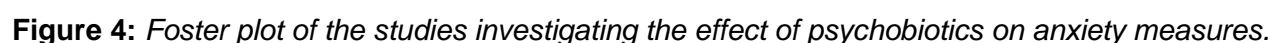
Meta-analysis of anxiety outcomes

Of the 14 studies used for the systematic review, 10 were included in the statistical summary (the remaining studies did not assess anxiety but stress only) which was performed with Review Manager 5 (Collaboration 2014). For each study, the standard mean difference (SMD) between the active and control groups was calculated for continuous anxiety outcomes and a Forest plot created (**Figure 4**). Combination of the SMDs revealed a pooled effect size of -0.04 (95% CI: $-0.21, 0.14$), pointing towards absence of any intervention effect. However, given that the singular SMDs differed substantially amongst each other, ranging from outcomes showing a consistent between-groups anxiety increase (Kitaoka, Uchida et al. 2009, Manos, Bravender et al. 2018), as well as a significant decrease (Kiecolt-Glaser, Belury et al. 2011), we also performed a sensitivity analysis based on study quality (please see **Appendix 3** and **Appendix 4** for the complete risk of bias assessment tables) in order to assess whether any other additional variables other than intervention variable might have biased study results. We found that when at high risk of bias studies were excluded, the effect size increased, reaching a value of -0.16 (95% CI: $-0.39, 0.06$) (**Figure 5**). It is worth noting that the *only* study at low risk of bias was that reporting the highest effect size: -0.61 (95% CI: $-1.09, -0.12$), (Kiecolt-Glaser et al., 2011), whereas the two studies reporting an increase in anxiety (Kitaoka, Uchida et al. 2009, Manos, Bravender et al. 2018) were amongst those at highest risk.

Going forward: recommendations for future research

Based on our systematic review, we conclude that there is currently *limited evidence for use of psychobiotics to treat stress and anxiety in youth*. As mentioned above, strongest effects may be found in persons with high anxious traits (Johnstone, Milesi et al. under review) and therefore, whereas the vast majority of studies in this review used unselected samples, future studies should involve clinical and borderline clinically anxious populations. There is also a need for more high-quality studies which use validated anxiety instruments and behavioural tasks. In particular, it would be important to differentiate whether the intervention aims to improve state and/or trait anxiety, and whether different intervention schedules are required for changing state anxiety as opposed to trait anxiety, for example. Critically, all future studies should include stool sample collections for microbial sequencing to assess direct impacts of intervention on the gut microbiome.

The use of psychobiotics to treat anxiety is a research field still very much in its infancy and given the animal literature and some encouraging preliminary findings in humans (albeit not specifically within the age range chosen for this report), combined with the importance of vulnerability to stress in the adolescent developmental window, we conclude that further research could yield inexpensive, safe and effective means to better manage anxiety. This view is also echoed by young people with lived experience, who not only reported anecdotal evidence of successful psychobiotic interventions, but who also expressed strong interest in contributing to this research drive.



Young people with lived experience request clearer instructions

Based on the literature, it would appear that specifically, consumption of *L. casei* Shirtoa, *L. rhamnosus*, *L. helveticus*, and *Bifidobacterium* (e.g. *B. infantis*) may provide some protection from the anxiogenic effects of environmental stress, and further long-term studies examining whether the development of anxious traits could be partially ameliorated by these probiotics. The young people noted that such information and guidance on specific bacterial strains would be welcome as the vast number of commercially available probiotic combinations are very confusing. As Becky put it:

“When I go into Boots to buy probiotics, there are millions of products available and the prices vary hugely, so I simply don’t know what to choose and I end up getting nothing. It would really help to receive some clarifications on what actually works”.

As evident from the review above and the meta-analysis, prebiotics hold particular promise as they are non-digestible (fibre) and thus, unlike some probiotics, reliably arrive fully in the gut. Best bets for further study are GOS and fructooligosaccharides which stimulate growth of beneficial *Lactobacillus* and *Bifidobacterium* species. These compounds are also more stable and not subject to the same degradation in potency over time that can be problematic in probiotics. Prebiotics such as FOS make up part of the dietary fibre in naturally occurring foods such as dairy, or are now widely available in concentrated form as food additives or supplements (Lamsal, 2012), which start from around £10 for a month supply.

Psychobiotic interventions could benefit from existing cultural practises

One advantage of psychobiotics in the treatment and prevention of youth anxiety that may have been as yet overlooked is the existing cross-cultural prevalence of fermented food sources containing psychobiotics. For instance, anxiolytic strains of *lactobacilli* have been found in traditional fermented doughs from the Congo and Burkina Faso (Abriouel, Ben Omar et al. 2006), Japanese fermented fish (Komatsuzaki, Shima et al. 2005), dairy and pickles from China and Mongolia (Bao, Song et al. 2016), and eastern European *kefir* fermented milk (Simova, Beshkova et al. 2002). This means that anxiolytic psychobiotics consumption could be ripe for a behavioural ‘nudge’, given that these products exist widely in many cultures and therefore potentially present fewer cultural barriers to use.

Young people would like to understand ‘the bigger picture’

Young people with lived experience showed much enthusiasm and support for more research in the area of dietary interventions, especially in light of the current gap for the age range of 14-24 years. However, they also asked for research approaches that would look at the bigger picture, which could include information on an individual’s personal circumstances and living situation. What was

specifically discouraged was yet another prescriptive approach that would require a change in diet, irrespective of other factors such as educational pressure, work environment aspects such as shift work, sleeping patterns, exercise or a number of other, common comorbidities such as depression. Based on our systematic review, we very much agree with the young people and would like to suggest that one possible explanation for the current success of psychobiotic interventions in animal research is that these studies have maximal control over all these different factors through the use of large, longitudinal cohorts and optimal control of environmental factors, whereas human studies either have chosen not to address these potentially confounding variables or been unable to do so.

Sample-specific considerations for future research

The young people provided a number of important suggestions with regards to new research going forward. For example, when discussing different confounding factors, they stressed repeatedly that any data collection on nutritional intake would need to proceed with caution. Specifically, it was warned that providing participants with numerical feedback, such as total calories consumed per day, would easily trigger attempts to control these numbers, as any potential mechanism of control would be latched upon, with potentially far reaching consequences, such as the risk of developing an eating disorder. The young people conceded that while it would be important to obtain comprehensive data on nutritional intake and dietary habits, it would be more helpful to withhold specific detailed feedback and only provide general pointers about nutritional health for example. Last, the young people stated that providing faeces for microbiome sequencing could be a real obstacle for this kind of research, but that they would consider participating if there were a number of options available for stool sampling (i.e. at home or at a testing centre), and that discretion (e.g. packaging for the stool sample that would be both leak and smell-proof, as well as neutrally designed) was paramount. These are all very valuable points as both nutritional analyses, as well as microbiome sequencing are both cornerstones of dietary intervention research into the microbiome gut-brain axis.

Towards a new, multidisciplinary research approach

Going forward, it is our view that in order to future-proof this new research area and to allow for sustained scientific progress and breakthrough, what is now needed are systematic, multidisciplinary approaches that consider not only the effect of the dietary intervention on composition of the microbiome, but also on how interventions interact with ongoing brain maturation and functional responsiveness. Similarly, and in line with the important points highlighted by the young people in our consultation, other factors such as hormonal changes due to the specific puberty stage or menstrual cycle, sleep hygiene and patterns, as well as life-style factors such as nutrition and exercise will need to be included to obtain a comprehensive, 'bigger picture'. Such an approach would also increase uptake and compliance with any future interventions.

Future studies could adopt a research approach that is already practised in the field of developmental cognitive neuroscience (DCN) (Johnstone and Cohen Kadosh in press), which focuses on investigating how the complex interplay of genetic, environmental and brain maturational factors shape psychological functioning in development to improve outcomes for the individual (Johnson, Halit et al. 2002, Johnson, Grossmann et al. 2009, Cohen Kadosh 2011). Moreover, placed at the intersection of nature vs. nurture, the DCN research approach always assumes a multi-level and multi-factor approach to understanding change which, by definition is multidisciplinary. Given that the field of microbiome and gut-brain axis research is still emerging and finding its shape, we would like to stress that any real progress will depend on the adoption of a similarly comprehensive multifactorial and multidisciplinary research approach for pinpointing mechanisms and translation in both animal and human models. Therefore, priority for funding should be given to projects that bring together the expertise and the collaboration of scientists from a range of fields (education, psychology, microbiology, neuroscience, and nutrition) and, importantly, guidance and advice from young people with lived experience to ensure that all research continues to address the questions that are relevant to the lives of young people with anxiety.

To conclude, the gut microbiome, and its effect on behaviour and mental health has captured the interest and imagination of scientists and the wider public alike. However, as a still relatively unexplored area, any real progress will require a multidisciplinary research approach, which gives priority to specifying mechanisms in the human and animal models, providing causal understanding and addressing realistic outcomes. This is particularly critical in light of strong public and commercial interests that are presently outpacing research efforts. Encouragingly, this approach has also been met with much enthusiasm from young people with lived experience of mental health problems, which suggests that these research approach and interventions may be ripe for a behavioural ‘nudge’ and potentially present few cultural barriers to use.

References

- Abriouel, H., N. Ben Omar, R. L. Lopez, M. Martinez-Canamero, S. Keleke and A. Galvez (2006). "Culture-independent analysis of the microbial composition of the African traditional fermented foods poto poto and degue by using three different DNA extraction methods." Int J Food Microbiol **111**(3): 228-233.
- Andersson, H., C. Tullberg, S. Ahrne, K. Hamberg, I. Lazou Ahren, G. Molin, M. Sonesson and A. Hakansson (2016). "Oral Administration of Lactobacillus plantarum 299v Reduces Cortisol Levels in Human Saliva during Examination Induced Stress: A Randomized, Double-Blind Controlled Trial." Int J Microbiol **2016**: 8469018.
- Bao, Q., Y. Song, H. Xu, J. Yu, W. Zhang, B. Menghe, H. Zhang and Z. Sun (2016). "Multilocus sequence typing of Lactobacillus casei isolates from naturally fermented foods in China and Mongolia." J Dairy Sci **99**(7): 5202-5213.
- Barrett, E., R. P. Ross, P. W. O'Toole, G. F. Fitzgerald and C. Stanton (2012). "gamma-Aminobutyric acid production by culturable bacteria from the human intestine." J Appl Microbiol **113**(2): 411-417.
- Bravo, J. A., P. Forsythe, M. V. Chew, E. Escaravage, H. M. Savignac, T. G. Dinan, J. Bienenstock and J. F. Cryan (2011). "Ingestion of Lactobacillus strain regulates emotional behavior and central GABA receptor expression in a mouse via the vagus nerve." Proc Natl Acad Sci U S A **108**(38): 16050-16055.
- Burokas, A., S. Arbolea, R. D. Moloney, V. L. Peterson, K. Murphy, G. Clarke, C. Stanton, T. G. Dinan and J. F. Cryan (2017). "Targeting the Microbiota-Gut-Brain Axis: Prebiotics Have Anxiolytic and Antidepressant-like Effects and Reverse the Impact of Chronic Stress in Mice." Biol Psychiatry **82**(7): 472-487.
- Cohen Kadosh, K. (2011). "What can emerging cortical face networks tell us about mature brain organisation?" Developmental Cognitive Neuroscience **1**(3): 246-255.
- Collaboration, T. C. (2014). Review Manager (RevMan). Copenhagen, The Nordic Cochrane Centre.
- Costantini, L., R. Molinari, B. Farinon and N. Merendino (2017). "Impact of Omega-3 Fatty Acids on the Gut Microbiota." Int J Mol Sci **18**(12).
- Cowan, C. S. M. and R. Richardson (2019). "Early-life stress leads to sex-dependent changes in pubertal timing in rats that are reversed by a probiotic formulation." Dev Psychobiol **61**(5): 679-687.

Cryan, J. F. and T. G. Dinan (2012). "Mind-altering microorganisms: the impact of the gut microbiota on brain and behaviour." Nat Rev Neurosci **13**(10): 701-712.

Culpepper, T., M. C. Christman, C. Nieves, Jr., G. J. Specht, C. C. Rowe, S. J. Spaiser, A. L. Ford, W. J. Dahl, S. A. Girard and B. Langkamp-Henken (2016). "Bifidobacterium bifidum R0071 decreases stress-associated diarrhoea-related symptoms and self-reported stress: a secondary analysis of a randomised trial." Benef Microbes **7**(3): 327-336.

David, L. A., C. F. Maurice, R. N. Carmody, D. B. Gootenberg, J. E. Button, B. E. Wolfe, A. V. Ling, A. S. Devlin, Y. Varma, M. A. Fischbach, S. B. Biddinger, R. J. Dutton and P. J. Turnbaugh (2014). "Diet rapidly and reproducibly alters the human gut microbiome." Nature **505**(7484): 559-563.

Dinan, T. G., C. Stanton and J. F. Cryan (2013). "Psychobiotics: a novel class of psychotropic." Biol Psychiatry **74**(10): 720-726.

EPPI-Centre, D. S. F. a. (2020). EPPI-Mapper. London, UK, University College London.

Foster, J. A. and K. A. McVey Neufeld (2013). "Gut-brain axis: how the microbiome influences anxiety and depression." Trends Neurosci **36**(5): 305-312.

Gibson, G. R., E. S. Scott, R. A. Rastall, K. M. Tuohy, A. Hotchkiss, A. Dubert-Ferrandon, M. Gareau, E. F. Murphy, D. Saulnier, G. Loh, S. Macfarlane, N. Delzenne, Y. Ringel, G. Kozianowski, R. Dickmann, I. Lenoir-Wijnkoop, C. Walker and R. Buddington (2010). "Dietary prebiotics: current status and new definition." Food Science and Technology **7**(1): 1-19.

Grenham, S., G. Clarke, J. F. Cryan and T. G. Dinan (2011). "Brain-gut-microbe communication in health and disease." Frontiers in Physiology **2**: 94.

Grossman, M. I. (1979). "Neural and hormonal regulation of gastrointestinal function: an overview." Annu Rev Physiol **41**: 27-33.

Higgins, J. P., S. G. Thompson, J. J. Deeks and D. G. Altman (2003). "Measuring inconsistency in meta-analyses." BMJ **327**(7414): 557-560.

Hughes, C., Y. Davoodi-Semiromi, J. C. Colee, T. Culpepper, W. J. Dahl, V. Mai, M. C. Christman and B. Langkamp-Henken (2011). "Galactooligosaccharide supplementation reduces stress-induced gastrointestinal dysfunction and days of cold or flu: a randomized, double-blind, controlled trial in healthy university students." Am J Clin Nutr **93**(6): 1305-1311.

Janik, R., L. A. M. Thomason, A. M. Stanis, P. Forsythe, J. Bienenstock and G. J. Stanis (2016). "Magnetic resonance spectroscopy reveals oral Lactobacillus promotion of increases in brain GABA, N-acetyl aspartate and glutamate." Neuroimage **125**: 988-995.

Johnson, M. H., T. Grossmann and K. Cohen Kadosh (2009). "Mapping functional brain development: Building a social brain through interactive specialization." *Dev Psychol* **45**(1): 151-159.

Johnson, M. H., H. Halit, S. J. Grice and A. Karmiloff-Smith (2002). "Neuroimaging of typical and atypical development: a perspective from multiple levels of analysis." *Dev Psychopathol* **14**(3): 521-536.

Johnstone, N. and K. Cohen Kadosh (in press). "Why a developmental cognitive neuroscience approach may be key for future-proofing microbiota-gut-brain research: commentary on Microbiota-gut-brain research: a critical analysis. ." *Brain and Behavioural Sciences*.

Johnstone, N., C. Milesi, O. Burn, T. van den Borgert, K. Hart, P. T. Sowden, P. Burnet and K. Cohen Kadosh (under review). "Anxiolytic effects of a prebiotic in healthy female volunteers are associated with reduced negative bias and increases in 'helpful' bacteria in the gut. ."

Karbownik, M. S., J. Kreczynska, P. Kwarta, M. Cybula, A. Wiktorowska-Owczarek, E. Kowalczyk, T. Pietras and J. Szemraj (2020). "Effect of Supplementation with *Saccharomyces Boulardii* on Academic Examination Performance and Related Stress in Healthy Medical Students: A Randomized, Double-Blind, Placebo-Controlled Trial." *Nutrients* **12**(5).

Kato-Kataoka, A., K. Nishida, M. Takada, M. Kawai, H. Kikuchi-Hayakawa, K. Suda, H. Ishikawa, Y. Gondo, K. Shimizu, T. Matsuki, A. Kushiro, R. Hoshi, O. Watanabe, T. Igarashi, K. Miyazaki, Y. Kuwano and K. Rokutan (2016). "Fermented Milk Containing *Lactobacillus casei* Strain Shirota Preserves the Diversity of the Gut Microbiota and Relieves Abdominal Dysfunction in Healthy Medical Students Exposed to Academic Stress." *Appl Environ Microbiol* **82**(12): 3649-3658.

Kato-Kataoka, A., K. Nishida, M. Takada, K. Suda, M. Kawai, K. Shimizu, A. Kushiro, R. Hoshi, O. Watanabe, T. Igarashi, K. Miyazaki, Y. Kuwano and K. Rokutan (2016). "Fermented milk containing *Lactobacillus casei* strain Shirota prevents the onset of physical symptoms in medical students under academic examination stress." *Benef Microbes* **7**(2): 153-156.

Keshavan, M. S., J. Giedd, J. Y. Lau, D. A. Lewis and T. Paus (2014). "Changes in the adolescent brain and the pathophysiology of psychotic disorders." *Lancet Psychiatry* **1**(7): 549-558.

Kiecolt-Glaser, J. K., M. A. Belury, R. Andridge, W. B. Malarkey and R. Glaser (2011). "Omega-3 supplementation lowers inflammation and anxiety in medical students: a randomized controlled trial." *Brain Behav Immun* **25**(8): 1725-1734.

Kitaoka, K., K. Uchida, N. Okamoto, S. Chikahisa, T. Miyazaki, E. Takeda and H. Sei (2009). "Fermented ginseng improves the first-night effect in humans." *Sleep* **32**(3): 413-421.

Kodish, I., C. Rockhill and C. Varley (2011). "Pharmacotherapy for anxiety disorders in children and adolescents." Dialogues Clin Neurosci **13**(4): 439-452.

Komatsuzaki, N., J. Shima, S. Kawamoto, H. Momose and T. Kimura (2005). "Production of γ -aminobutyric acid (GABA) by *Lactobacillus paracasei* isolated from traditional fermented foods." Food Microbiology **22**(6): 497-504.

Manos, B. E., T. D. Bravender, T. M. Harrison, H. L. H. Lange, C. B. Cottrill, M. Abdel-Rasoul and A. E. Bonny (2018). "A pilot randomized controlled trial of omega-3 fatty acid supplementation for the treatment of anxiety in adolescents with anorexia nervosa." Int J Eat Disord **51**(12): 1367-1372.

Marcos, A., J. Warnberg, E. Nova, S. Gomez, A. Alvarez, R. Alvarez, J. A. Mateos and J. M. Cobo (2004). "The effect of milk fermented by yogurt cultures plus *Lactobacillus casei* DN-114001 on the immune response of subjects under academic examination stress." Eur J Nutr **43**(6): 381-389.

Mayer, E. A. (2011). "Gut feelings: the emerging biology of gut-brain communication." Nat Rev Neurosci **12**(8): 453-466.

Mayer, E. A., R. Knight, S. K. Mazmanian, J. F. Cryan and K. Tillisch (2014). "Gut microbes and the brain: paradigm shift in neuroscience." J Neurosci **34**(46): 15490-15496.

McVey Neufeld, K. A., P. Luczynski, C. Seira Oriach, T. G. Dinan and J. F. Cryan (2016). "What's bugging your teen?-The microbiota and adolescent mental health." Neurosci Biobehav Rev **70**: 300-312.

Niu, Y., S. Liang, T. Wang, X. Hu, W. Li, X. Wu and F. Jin (2020). "Pre-Gestational intake of *Lactobacillus helveticus* NS8 has anxiolytic effects in adolescent Sprague Dawley offspring." Brain Behav: e01714.

Paus, T., M. Keshavan and J. N. Giedd (2008). "Why do many psychiatric disorders emerge during adolescence?" Nature Reviews Neuroscience **9**: 947-957.

Sarkar, A., S. Harty, K. V. Johnson, A. H. Moeller, R. N. Carmody, S. M. Lehto, S. E. Erdman, R. I. M. Dunbar and P. W. J. Burnet (2020). "The role of the microbiome in the neurobiology of social behaviour." Biol Rev Camb Philos Soc.

Sarkar, A., S. Harty, S. M. Lehto, A. H. Moeller, T. G. Dinan, R. I. M. Dunbar, J. F. Cryan and P. W. J. Burnet (2018). "The Microbiome in Psychology and Cognitive Neuroscience." Trends Cogn Sci **22**(7): 611-636.

Sarkar, A., S. M. Lehto, S. Harty, T. G. Dinan, J. F. Cryan and P. W. J. Burnet (2016).

"Psychobiotics and the Manipulation of Bacteria-Gut-Brain Signals." Trends Neurosci **39**(11): 763-781.

Schmidt, K., P. J. Cowen, C. J. Harmer, G. Tzortzis, S. Errington and P. W. Burnet (2015).

"Prebiotic intake reduces the waking cortisol response and alters emotional bias in healthy volunteers." Psychopharmacology (Berl) **232**(10): 1793-1801.

Simova, E., D. Beshkova, A. Angelov, T. Hristozova, G. Frengova and Z. Spasov (2002). "Lactic acid bacteria and yeasts in kefir grains and kefir made from them." J Ind Microbiol Biotechnol **28**(1): 1-6.

Sterne, J. A. C., J. Savovic, M. J. Page, R. G. Elbers, N. S. Blencowe, I. Boutron, C. J. Cates, H. Y. Cheng, M. S. Corbett, S. M. Eldridge, J. R. Emberson, M. A. Hernan, S. Hopewell, A. Hrobjartsson, D. R. Junqueira, P. Juni, J. J. Kirkham, T. Lasserson, T. Li, A. McAleenan, B. C. Reeves, S. Shepperd, I. Shrier, L. A. Stewart, K. Tilling, I. R. White, P. F. Whiting and J. P. T. Higgins (2019). "RoB 2: a revised tool for assessing risk of bias in randomised trials." BMJ **366**: l4898.

Takada, M., K. Nishida, A. Kataoka-Kato, Y. Gondo, H. Ishikawa, K. Suda, M. Kawai, R. Hoshi, O. Watanabe, T. Igarashi, Y. Kuwano, K. Miyazaki and K. Rokutan (2016). "Probiotic *Lactobacillus casei* strain Shirota relieves stress-associated symptoms by modulating the gut-brain interaction in human and animal models." Neurogastroenterol Motil **28**(7): 1027-1036.

Tarr, A. J., J. D. Galley, S. E. Fisher, M. Chichlowski, B. M. Berg and M. T. Bailey (2015). "The prebiotics 3'Sialyllactose and 6'Sialyllactose diminish stressor-induced anxiety-like behavior and colonic microbiota alterations: Evidence for effects on the gut-brain axis." Brain Behav Immun **50**: 166-177.

Tran, N. (2019). "Updated statistic to the gut-brain paper examining the effect of multispecies probiotics on anxiety score in young adults: A response." J Affect Disord **259**: 314-315.

Tran, N., M. Zhebrak, C. Yacoub, J. Pelletier and D. Hawley (2019). "The gut-brain relationship: Investigating the effect of multispecies probiotics on anxiety in a randomized placebo-controlled trial of healthy young adults." J Affect Disord **252**: 271-277.

Table 1. Characteristics of the pre-clinical intervention studies

Study	animal	Intervention	Active Compound	Dose	Frequency (dose/day)	Duration (days)	sex	age (weeks)	behavioural anxiety measure	effect	stress measures	effect	neurobiological measures	effect
Bravo et al. (2011)	mice	probiotic	Lactobacillus rhamnosus (JB-1)	5 x 10 ⁹ CFU	1	28	male	10/11	EPM	↑ open arms	Corticosterone	↓	GABA B1B mRNA	↑ CG1, PrL ↓ BLA, CeA, LC, DG, CA3, CA1
											SIH	ns		
Burokas et al. (2017)	mice	prebiotic	FOS	0.3-0.4 g	1	70	male	>7	OFT	↑ time in the centre	SIH	↓ FOS+GOS	GABA B1	↑ FOS+GOS
			GOS						defensive marble burying	↓ buried marbles	corticosterone	↓	GABA B2	↑ FOS+GOS
			FOS+GOS placebo						EPM	↑ entries into the centre	stress-induced defecation	↓ GOS and GOS+FOS	BDNF	↑ hippocampus, FOS+GOS
Janik et al. (2016)	mice	probiotic	Lactobacillus rhamnosus (JB-1)	1 x 10 ⁹ CFU	1	28	male	adult	-	-	-	-	GABA metabolites	↑
Tarr et al. (2015)	mice	prebiotic	3'Sialyllactose	5% of diet	1	14	male	6-8	light-dark transition	↑ dark	corticosterone	ns	-	-
			6'Sialyllactose						OFT	↑ time in the centre				
Niu et al. (2019)	SPF rats	probiotic	Lactobacillus helveticus NS8	10 ⁸ CFU/ml	1	9	male and female	9	EPM	↑ open arms ↑ time in the centre ↑ entries into the centre	-	-	-	-
									OFT PPI	↓ latency ns				
Murray et al. (2019)	mice	probiotic	Lactobacillus cremoris, Lactobacillus diacetylactis, Lactobacillus acidophilus	3 x 10 ⁹ CFU/g	1	14	male and female	5-7	EPM	↑ open arms, males ↑ time in the centre, males	Restraint stress test	-	-	.
									OFT					
Kitaoka et al. (2009)	mice	prebiotic	fermented ginseng	50 mg/kg	1	20	male and female	7	light-dark transition EPM	↓ latency ns	-	-	GAT1 Abat	↓ ↓

CG1: cingulate cortex 1; PrL: prelimbic; BLA: basolateral amygdala; CeA: central amygdala; LC: Locus coeruleus; DG: dentate gyrus; CA3: cornus ammonis area 3; CA1: cornus ammonis area 1; OFT: open field test; EPM: elevated plus maze; SIH: stress-induced hyperthermia; SPF: specific-pathogen-free; PPI: prepulse inhibition; GAT1: predominant GABA transporter; Abat: GABA catabolic enzyme

Table 2. Characteristics of the studies included in the systematic review

Study	Intervention Type	Delivery Method	Active Compound	Dose	Frequency (dose/day)	Duration (days)	Active/Control	Mean Age (SE)	Sex (M/F)	Anxiety Measure	Effect	Stress Measure	Effect2
Andersson et al. (2016)	probiotic	capsule	Lactobacillus plantarum 299v	10 x 10 ⁹ CFU	1	21	21/20	range 18-30	13/28	-	-	salivary cortisol	↓
												salivary immunoglobulin A	ns
Culpepper et al. (2016)	probiotic	capsule	Lactobacillus helveticus R0052	3 x 10 ⁹ CFU	1	42	145	19.9 (0.1)	209/372	-	-	self-reported stress	↓ for B. Bifidum only, only in sleep deprived students
			Bifidobacterium longum ssp. infantis R0033				147						
			Bifidobacterium bifidum R0071				142						
			placebo				147						
Hughes et al. (2011)	prebiotic	sachet	galactooligosaccharide	0, 2.5, 5 g	1	56	279/140	19.9 (0.1)	207/212	-	-	self-reported stress	ns
Karbownik et al. (2020)	probiotic	capsule	Saccharomyces boulardii	5 x 10 ⁹ CFU	1	30	31/29	22.6	37/55	STAI state	ns	salivary cortisol	ns
												salivary metanephrine pulse rate	ns
Kato-Kataoka et al. (2016)	probiotic	liquid	Lactobacillus casei Shirota	100 x 10 ⁹ CFU	1	56	23/24	22.8 (0.4)	25/22	STAI state	ns	visual analogue stress scale	↑
												salivary cortisol	↓
												salivary alpha-amylase	ns
Kato-Kataoka et al. (2016b)	probiotic	liquid	Lactobacillus casei Shirota	100 x 10 ⁹ CFU	1	56	24/23	22.9 (0.4)	26/21	STAI state	ns	salivary cortisol	ns
										HADS	-	salivary immunoglobulin A	ns
Kitaoka et al. (2009)	prebiotic	capsule	Fermented Ginseng	205 mg	9	8	8/8	20.7 (0.4)	16/0	STAI total POMS	↓ ns	salivary cortisol	ns
												salivary immunoglobulin A	ns
												urinary 8-hydroxydeoxyguanosine	ns

(continued)

Table 2. Characteristics of the studies included in the systematic review (cont'd)

Study	Intervention Type	Delivery Method	Active Compound	Dose	Frequency (dose/day)	Duration (days)	Active/Control	Mean Age (SE)	Sex (M/F)	Anxiety Measure	Effect	Stress Measure	Effect2
Kiecolt-Glaser et al. (2011)	prebiotic	capsule	omega-3 polyunsaturated fatty acid	2.5 g	1	84	34/34	23.7 (1.9)	38/30	BAI	↓	-	-
Liu et al. (2019)	probiotic	capsule	Lactobacillus plantarum PS128	30 x 10 ⁹ CFU	ns	30	36/35	10.0	71/0	CBCL	ns	-	-
Manos et al. (2018)	prebiotic	capsule	omega-3-PUFA	782 mg	4	84	10/8	14.7	0/18	BAIT	↓	-	-
Marcos et al. (2004)	probiotic	liquid	Lactobacillus delbrueckii bulgaricus	1 x 10 ⁹ CFU	2	21	73/63	18-23	40/96	STAI state	ns	serum cortisol	ns
			Streptococcus salivarius thermophilus Lactobacillus casei DN114001	10 x 10 ⁹ CFU 10 x 10 ⁹ CFU						STAI trait	ns		
Moller et al. (2017)	probiotic	capsule	Bifidobacterium breve	112.5 x 10 ⁹ CFU (total)	1	14	57/48	20.2	36/69	-	-	PASAT	ns
			B.longum B. infantis Lactobacillus acidophilus L. plantarum L. paracasei L. bulgaricus Streptococcus thermophilus									Blood pressure	ns
Schmidt et al. (2014)	prebiotic	powder	fructooligosaccharides (FOS)	5.5 g	1	21	15	23.7	22/23	STAI state	ns	PSS-10	ns
			galactooligosaccharide (B-GOS)				15			Attentional dot-probe	↓ GOS only, unmasked	salivary cortisol	↓ GOS only
			placebo				15			Facial expression recognition Emotional word recognition and recall	ns		

(continued)

Table 2. Characteristics of the studies included in the systematic review (cont'd)

Study	Intervention Type	Delivery Method	Active Compound	Dose	Frequency (dose/day)	Duration (days)	Active/Control	Mean Age (SE)	Sex (M/F)	Anxiety Measure	Effect	Stress Measure	Effect2
Tran et al. (2019)	probiotic	-	18 species	50 x 10 ⁹ CFU	1	28	14	20.6	20/66	BAI	ns BAI total	-	-
			10 species	50 x 10 ⁹ CFU			13			ACQ-R	↑ BAI-Panic, 50 x 10 ⁹ CFU only	-	-
			18 species	15 x 10 ⁹ CFU			15			PSWQ	↓ 50 x 10 ⁹ CFU only	-	-
			10 species	10 x 10 ⁹ CFU			15						
			placebo				11						

↓: improvement vs placebo; ↑: deminishment vs placebo; *: effect size estimated or calculated from reported data; ns: no significant effect; -: not reported or not applicable; ACQ-R: Anxiety control questionnaire-revised; BAI: Beck Anxiety Inventory; CBCL: Child Behaviour Checklist (Anxiety); CFU: colony forming units; HADS: Hospital Anxiety and Depression Scale; PASAT: Paced Auditory Serial Addition Test; PSS: Percieved Stress Scale-10; PSWQ: Penn state worry questionnaire; STAI: State-Trait Anxiety Inventory

Appendix 1: methods

Eligibility criteria

Participants

Only studies whose participants mean age fell within the age range of 10-24 years old were included, regardless of gender, religious, ethnicity and socio-demographic status. Both healthy and clinical samples were eligible, as far as either anxiety or stress were measured.

Study and intervention type

Only controlled trials that had assessed anxiety and stress as primary or secondary outcome were searched. At least two measures- one pre- and one post- intervention, needed to have been collected. No selection criteria were considered for follow-up and settings. Studies based on either prebiotics or probiotics supplements intake were included, regardless of the form they were administered in- tablets, powders, capsules, fortified food, food, drinks. Studies assessing probiotics and prebiotics-based interventions in combination between with each other (i.e. synbiotics) were excluded.

Comparators

Both placebo and treatment as usual comparison groups were eligible.

Outcomes

Primary outcome

Overall anxiety symptoms improvement as assessed by the included studies. Validated-self reported anxiety measures and questionnaires as well as structured and semi-structured interviews were eligible.

Secondary outcome

Behavioural (as assessed by e.g. emotional stroop, dot-probe, speech test) as well as stress measures were eligible.

Report criteria

Studies fulfilling the following criteria were included: data did not necessarily have to be available, but needed to be published and peer-reviewed. No restrictions were applied for date of publication.

Search strategy

7 databases were searched (PubMed, Embase, Cochrane, Scopus, Ovid, Orbis, Web of Science) and the search strategies reported in the [Appendix 2](#) were implemented. In addition, hand-searching of references cited in each publication as well as the bibliography of relevant systematic review articles was performed.

Study records

Study selection and data extraction

The search output (5416 studies) was imported into EppiReviewer4 (EPPI-Centre 2020) and accurately controlled for duplicates. After 1549 duplicates had been removed, 3867 studies were double-screed (double screening performed by M. Basso and P. Knytl in consultation with K. Cohen Kadosh when disagreement occurred) for titles and abstract- among them, 3827 were excluded for population and outcome, whereas 4 due to text unavailability. 36 full-text studies were then double-assessed for eligibility- 21 were excluded for population and outcome while 1 was excluded as highly likely to have assessed the same sample cohorts of other two included studies (Kato-Kataoka, Nishida, Takada, Kawai, et al., 2016; Kato-Kataoka, Nishida, Takada, Suda, et al., 2016). The final output for the systematic review was 14 studies, among which 10 were included in the meta-analyses.

Excel tables were used to support the qualitative data extraction process (performed by M.Basso and P.Knytl), whereas Review Manager 5 was used to extract the quantitative data. When the research report did not provide all the data needed, authors were contacted via e-mail.

Risk of bias assessment

In regard with anxiety studies, the risk of bias (RoB) assessment was done at outcome level, whereas the RoB of studies measuring stress was assessed at study level. Based on the Revised Cochrane risk-of-bias tool for randomization trials (RoB-2), (Sterne, Savovic et al. 2019) the following bias domains were considered:

- Random sequence generation (selection bias)
- Allocation concealment (selection bias)
- Personnel and participant blinding (performance bias)
- Outcome assessment blinding (detection bias)
- Incomplete outcome data (attrition bias)
- Selective reporting (reporting bias)
- Other sources of bias

Statistical analyses

Data were extracted as standardized mean differences (SMDs) with 95% CI and I^2 statistics was used as a between-studies heterogeneity index (Higgins, Thompson et al. 2003). The pooled SMD was calculated based on a random-effects model using Review Manager 5. Sensitivity analyses were also performed removing the studies at high risk of bias from the analyses.

Appendix 2: search terms

PUBMED: 449 results

#1 humans[MeSH Terms] OR patients[MeSH Terms] OR research subjects[MeSH Terms] OR human experimentation[MeSH Terms] OR human*[title/abstract] OR client*[title/abstract] OR individual*[title/abstract] OR subject*[title/abstract] OR participant* [title/abstract]

#2 minors[MeSH Terms] OR adolescent[MeSH Terms] OR child[MeSH Terms] OR adolescence[MeSH Terms] OR adolescent, development[MeSH Terms] OR child, development[MeSH Terms] OR paediatric[MeSH Terms] OR puberty[Mesh Terms] OR young adult[sMeSH Terms] OR teen*[title/abstract] OR young men[title/abstract] OR young women[title/abstract] OR adolescen*[title/abstract] OR youth [title/abstract] OR undergraduate student* [title/abstract] OR college student* [title/abstract]

#3 prebiotics[MeSH Terms] OR probiotics[MeSH Terms] OR dietary carbohydrates[Mesh Terms] OR dietary fiber[MeSH Terms] OR psychobiotic*[title/abstract] OR probio*[title/abstract] OR prebio*[title/abstract] OR pro-bio*[title/abstract] OR pre-bio*[title/abstract] OR lactobacill* [title/abstract] OR bifidobacteri*[title/abstract]

#4 anxiety[MeSH Terms] OR anxiety disorders[MeSH Terms] OR test anxiety scale[MeSH Terms] OR manifest anxiety scale[MeSH Terms] OR patient health questionnaire[MeSH Terms] OR survey and questionnaire/psychology[MeSH Terms] OR psychology, child[MeSH Terms] OR psychology, adolescent[MeSH Terms] OR child behavior disorders[MeSH Terms] OR panic[MeSH Terms] OR affect[Mesh Terms] OR affective symptoms[MeSH Terms] OR performance anxiety[MeSH Terms] OR stress, psychological[MeSH Terms] OR anxi*[title/abstract] OR stress[Text Word] OR PSS[Text Word] OR SAS[Text Word] OR DASS[Text Word] OR HADS[Text Word] OR HAD-S[Text Word] OR BAI[Text Word] OR STAI[Text Word] OR PHQ[Text Word] OR Emotional decision*[text word] OR psychological distress [mesh terms] OR emotions[mesh Terms] OR emotion regulation [mesh terms] OR "emotional stroop" [text word] OR "dot probe[text word]

COCHRANE: 372 results

#1 [mh humans] OR [mh patients] or [mh "research subjects"] OR [mh "human experimentation"] OR participant OR client OR individual OR subject

#2 [mh minors] OR [mh adolescent] OR [mh adolescence] OR [mh child] or [mh puberty] or [mh "adolescent, development"] or [mh "child, development"] OR [mh paediatric] or "young men" or "young women" or teen* or adolescen* or "undergraduate student" or "college student"

#3 [mh probiotics] or [mh prebiotics] or psychobiotic* or probio* or prebio* or [mh "dietary carbohydrates"] or [mh "dietary fiber"] or bifidobacteri* or lactobacill*

#4 [mh anxiety] or [mh "anxiety disorders"] or [mh affect] or [mh panic] or [mh "affective symptoms"] or [mh "patient health questionnaire"] or [mh "survey and questionnaires"/PX] or [mh "psychology, child"] or [mh "psychology, adolescent"] or [mh "test anxiety scale"] or [mh "manifest anxiety scale"] or [mh "child behavior disorders"] or [mh "performance anxiety"] or [mh "stress, psychological"] or [mh "emotion regulation"] or [mh emotions] or [mh "psychological distress"] or anxi* or sas or dass or hads or had-s or stai or bai or phq or pss or "emotional stroop" or "dot-probe"

MEDLINE: 105 results

#1 (MM "Humans") OR (MH "Patients+") OR (MH "Research Subjects+") OR (MH "Human Experimentation+") OR "human*" OR "subject*" OR "individual*" OR "client*" OR participant*

#2 (MM "Minors") OR (MM "Adolescent") OR (MM "Adolescent Development") OR (MH "Child+") OR (MH "Child Development+") OR "adolescen*" OR (MH "Pediatrics") OR (MM "Puberty") OR (MM "Young Adult") OR "teen*" OR "youth" OR "young men" OR "young women" OR "undergraduate student" OR "college student"

#3 (MM "Probiotics") OR (MM "Prebiotics") OR (MM "Dietary Carbohydrates") OR (MM "Dietary Fiber") OR "psychobiotic*" OR "probio*" OR "prebio*" OR "pro-bio*" OR "pre-bio*" OR "lactobacill*" OR "bifidobacteri*"

#4 (MH "Anxiety+") OR (MH "Anxiety Disorders+") OR (MM "Test Anxiety Scale") OR (MM "Manifest Anxiety Scale") OR (MM "Patient Health Questionnaire") OR (MM "Surveys and Questionnaires"/PX) OR (MM "Psychology, Child") OR (MM "Psychology, Adolescent") OR (MM "Child Behavior Disorders") OR (MM "Panic") OR (MH "Affect+") OR (MH "Affective Symptoms+") OR (MM "Performance Anxiety") OR (MH "Stress, Psychological+") OR (MH "Emotions+") OR (MH "Psychological Distress") OR (MM "Emotional Regulation") OR "SAS" OR "DASS" OR "HADS" OR "HAD-S" OR "BAI" OR "STAI" OR "PHQ" OR "PSS" OR "anxi*" OR "emotional stroop" OR "Emotional decision*" OR "dot probe" OR "stress"

SCOPUS:2071 results

((TITLE-ABS-KEY(human) OR TITLE-ABS-KEY(patient) OR TITLE-ABS-KEY("research subject") OR TITLE-ABS-KEY("human trial") OR TITLE-ABS-KEY(subject) OR TITLE-ABS-KEY(client) OR TITLE-ABS-KEY(individual))) and ((TITLE-ABS-KEY(minor) OR TITLE-ABS-KEY(adolescen*) OR TITLE-ABS-KEY(child) OR TITLE-ABS-KEY("young adult") OR TITLE-ABS-KEY(teen*) OR TITLE-ABS-KEY("young m?n") OR TITLE-ABS-KEY("young wom?n") OR TITLE-ABS-KEY(youth) OR TITLE-ABS-KEY("undergraduate student*") OR TITLE-ABS-KEY("college student*")))) and ((TITLE-ABS-KEY(prebiotic) OR TITLE-ABS-KEY(probiotic) OR TITLE-ABS-KEY(psychobiotic) OR TITLE-ABS-KEY(lactobacill*) OR TITLE-ABS-KEY(bifidobacter*) OR TITLE-ABS-KEY("dietary fiber")))) and ((TITLE-ABS-KEY(anxi*) OR TITLE-ABS-KEY(affect*) OR TITLE-ABS-KEY("emotion regulation") OR TITLE-ABS-KEY("emotional disorder") OR TITLE-ABS-KEY("patient health questionnaire") OR TITLE-ABS-KEY(panic) OR TITLE-ABS-KEY(psychologic*) OR TITLE-ABS-KEY(sas) OR TITLE-ABS-KEY(dass) OR TITLE-ABS-KEY(had?s) OR TITLE-ABS-KEY(bai) OR TITLE-ABS-KEY(stai) OR TITLE-ABS-KEY(pss) OR TITLE-ABS-KEY(phq) OR TITLE-ABS-KEY("emotional stroop") OR TITLE-ABS-KEY("dot?probe") OR TITLE-ABS-KEY(stress) OR TITLE-ABS-KEY(distress)))

EMBASE: 347 results

#1 'human'/exp OR 'patient'/exp OR 'research subject'/exp OR 'human experiment'/exp OR human*:ti,ab OR client*:ti,ab OR individual*:ti,ab OR subject*:ti,ab OR participant*:ti,ab

#2 'minor'/exp OR 'adolescent'/exp OR 'child'/exp OR 'adolescence'/exp OR 'young adult'/exp OR 'young m#n':ti,ab OR 'young wom#n':ti,ab OR teen*:ti,ab OR adolescen*:ti,ab OR youth:ti,ab OR 'undergraduate student*':ti,ab OR 'college student*':ti,ab

#3 'probiotic agent'/exp OR 'prebiotic agent'/exp OR 'dietary fiber'/exp OR 'psychobiotic agent'/exp OR 'lactobacillus'/exp OR 'bifidobacterium'/exp OR psychobiotic*:ti,ab OR pro?bio*:ti,ab OR pre?bio*:ti,ab OR lactobacill*:ti,ab OR bifidofacteri*:ti,ab

#4 'anxiety'/exp OR 'anxiety disorder'/exp OR 'anxiety psychology'/exp OR 'anxiety assessment'/exp OR 'child psychology'/exp OR 'affect'/exp OR 'emotion regulation'/exp OR

'emotional disorder'/exp OR 'emotional stress'/exp OR 'patient health questionnaire'/exp OR 'behavior/psychological aspect' OR sas:ti,ab OR dass:ti,ab OR had?s:ti,ab OR bai:ti,ab OR stai:ti,ab OR phq:ti,ab OR pss:ti,ab OR anxi*:ti,ab OR 'emotional stroop':ti,ab OR 'dot?probe':ti,ab OR distress:ti,ab OR stress:ti,ab OR 'emotional decision*':ti,ab

PSYCHINFO: 33 results

#1 DE "Experimental Subjects" OR AB participant* OR TABsubject* OR AB individual* OR AB human*

#2 DE "Adolescent Psychopathology" OR DE "Adolescent Psychology" OR DE "Adolescent Psychiatry" OR DE "Adolescent Development" OR DE "Adolescent Behavior" OR DE "Adolescent Characteristics" OR DE "Adolescent Health" OR DE "Early Adolescence" OR AB child* OR AB adolescen* OR AB teen* OR AB youth OR AB "young adult*" OR AB "young women" OR AB "young men" or AB "undergraduate student*" or AB "college student"

#3 DE "Dietary Supplements" OR AB probio* OR AB prebio* OR AB lactobacill* OR AB bifidobacteri* OR AB psychobiotic* OR AB "dietary fiber"

#4 (((((((DE "Anxiety" OR DE "Anxiety Sensitivity" OR DE "Computer Anxiety" OR DE "Health Anxiety" OR DE "Mathematics Anxiety" OR DE "Performance Anxiety" OR DE "Social Anxiety" OR DE "Speech Anxiety" OR DE "Test Anxiety" OR DE "Anxiety Disorders" OR DE "Castration Anxiety" OR DE "Death Anxiety" OR DE "Generalized Anxiety Disorder" OR DE "Obsessive Compulsive Disorder" OR DE "Panic Attack" OR DE "Panic Disorder" OR DE "Phobias" OR DE "Separation Anxiety Disorder" OR DE "Trichotillomania" OR DE "Taylor Manifest Anxiety Scale" OR DE "State Trait Anxiety Inventory" OR DE "Childrens Manifest Anxiety Scale") OR (DE "Child Behavior Checklist")) OR (DE "Mental Health and Illness Assessment")) OR (DE "Health Psychology Assessment" OR DE "Health Attitude Measures" OR DE "Health Behavior Measures")) OR (DE "Psychodiagnostic Measures")) OR (DE "Psychodiagnostic Interview" OR DE "Diagnostic Interview Schedule" OR DE "Structured Clinical Interview")) OR (DE "Attentional Bias")) OR (DE "Behavioral Assessment")) OR (DE "Distress") OR AB "emotion regulation" OR TX "emotional stroop" OR TX "dot probe" OR TX SAS OR TX DASS OR TX DA?S OR TX BAI OR TX STAI OR TX PHQ OR TX PSS

WEB OF SCIENCE: 2029 results

#1 TOPIC (human* OR patient* OR subject* OR client* OR individual*)

#2 TOPIC (adolescen* OR child* OR "young adult*" OR teen* OR "young m?n" OR "young wom?n" OR youth or "undergraduate student*" or "college student")

#3 TOPIC (prebiotic* OR probiotic* OR psychobiotic* OR lactobacill* OR bifidobacter* OR "dietary fiber")

#4 TOPIC (anxi* OR affect* OR "emotion* regulation" OR "emotional disorder* OR "patient health questionnaire" OR sas OR dass OR had?s OR stai OR bai OR phq OR pss OR panic OR "emotional stroop" OR " dot?probe" OR "psychological distress" OR stress)

Appendix 3: Risk of Bias Assessment of anxiety studies

Unique ID	K20STAIS	Study ID	Kar20	Assessor	
Ref or Label	Karbownik 2020	Aim	assignment to intervention (the 'intention-to-treat' effect)		
Experimental	Probiotic	Comparator	placebo	Source	
Outcome	STAI state	Results	-0,04	Weight	19.9
Domain	Signalling question			Response	Comments
Bias arising from the randomization process	1.1 Was the allocation sequence random?			Y	
	1.2 Was the allocation sequence concealed until participants were enrolled and assigned to interventions?			Y	
	1.3 Did baseline differences between intervention groups suggest a problem with the randomization process?			N	
	Risk of bias judgement			Low	
Bias due to deviations from intended interventions	2.1. Were participants aware of their assigned intervention during the trial?			N	
	2.2. Were carers and people delivering the interventions aware of participants' assigned intervention during the trial?			N	
	2.3. If Y/PY/NI to 2.1 or 2.2: Were there deviations from the intended intervention that arose because of the experimental context?			PN	
	2.4 If Y/PY to 2.3: Were these deviations likely to have affected the outcome?			NA	
	2.5. If Y/PY/NI to 2.4: Were these deviations from intended intervention balanced between groups?			NA	
	2.6 Was an appropriate analysis used to estimate the effect of assignment to intervention?			PY	
	2.7 If N/PN/NI to 2.6: Was there potential for a substantial impact (on the result) of the failure to analyse participants in the group to which they were randomized?			PN	
	Risk of bias judgement			Some concerns	
Bias due to	3.1 Were data for this outcome available for all, or nearly all, participants randomized?			N	

missing outcome data	3.2 If N/PN/NI to 3.1: Is there evidence that result was not biased by missing outcome data?			PY	ITT analysis did not show different statistical results in comparison to PP analysis
	3.3 If N/PN to 3.2: Could missingness in the outcome depend on its true value?			NA	
	3.4 If Y/PY/NI to 3.3: Is it likely that missingness in the outcome depended on its true value?			NA	
	Risk of bias judgement			Low	
Bias in measure ment of the outcome	4.1 Was the method of measuring the outcome inappropriate?			N	
	4.2 Could measurement or ascertainment of the outcome have differed between intervention groups?			N	
	4.3 Were outcome assessors aware of the intervention received by study participants?			N	
	4.4 If Y/PY/NI to 4.3: Could assessment of the outcome have been influenced by knowledge of intervention received?			NA	
	4.5 If Y/PY/NI to 4.4: Is it likely that assessment of the outcome was influenced by knowledge of intervention received?			NA	
	Risk of bias judgement			Low	
Bias in selection of the reported result	5.1 Were the data that produced this result analysed in accordance with a pre-specified analysis plan that was finalized before unblinded outcome data were available for analysis?			NI	
	5.2 ... multiple eligible outcome measurements (e.g. scales, definitions, time points) within the outcome domain?			NI	
	5.3 ... multiple eligible analyses of the data?			NI	
	Risk of bias judgement			Some concerns	
Overall bias	Risk of bias judgement			Some concerns	
Unique ID	K09STAITOT	Study ID	Kit09	Assessor	
Ref or Label	Kitaoka 2009	Aim	assignment to intervention (the 'intention-to-treat' effect)		

Experimental	prebiotic	Comparator	placebo	Source	
Outcome	STAI-total	Results	0,6	Weight	2.8
Domain	Signalling question			Response	Comments
Bias arising from the randomization process	1.1 Was the allocation sequence random?			NI	
	1.2 Was the allocation sequence concealed until participants were enrolled and assigned to interventions?			NI	
	1.3 Did baseline differences between intervention groups suggest a problem with the randomization process?			PY	prebiotic group: 100.5 at baseline down to 93.63 at t2 (with p<0.05)
	Risk of bias judgement			High	placebo group: 87.73 at baseline down to 84.25
Bias due to deviations from intended interventions	2.1. Were participants aware of their assigned intervention during the trial?			N	
	2.2. Were carers and people delivering the interventions aware of participants' assigned intervention during the trial?			N	
	2.3. If Y/PY/NI to 2.1 or 2.2: Were there deviations from the intended intervention that arose because of the experimental context?			NI	
	2.4 If Y/PY to 2.3: Were these deviations likely to have affected the outcome?			NA	
	2.5. If Y/PY/NI to 2.4: Were these deviations from intended intervention balanced between groups?			NA	
	2.6 Was an appropriate analysis used to estimate the effect of assignment to intervention?			NI	
	2.7 If N/PN/NI to 2.6: Was there potential for a substantial impact (on the result) of the failure to analyse participants in the group to which they were randomized?			NI	
	Risk of bias judgement			High	The authors did not include a participant flow diagram or any relevant information about adherence to intervention or protocol deviations
Bias due to	3.1 Were data for this outcome available for all, or nearly all, participants randomized?			NI	

missing outcome data	3.2 If N/PN/NI to 3.1: Is there evidence that result was not biased by missing outcome data?	PN	
	3.3 If N/PN to 3.2: Could missingness in the outcome depend on its true value?	NI	
	3.4 If Y/PY/NI to 3.3: Is it likely that missingness in the outcome depended on its true value?	NI	
	Risk of bias judgement	High	Again, authors did not provide a flow diagram, or give detailed information about participants who entered the studies, lost to follow-up, withdrawn, etc.
Bias in measurement of the outcome	4.1 Was the method of measuring the outcome inappropriate?	N	
	4.2 Could measurement or ascertainment of the outcome have differed between intervention groups?	N	
	4.3 Were outcome assessors aware of the intervention received by study participants?	N	
	4.4 If Y/PY/NI to 4.3: Could assessment of the outcome have been influenced by knowledge of intervention received?	NA	
	4.5 If Y/PY/NI to 4.4: Is it likely that assessment of the outcome was influenced by knowledge of intervention received?	NA	
	Risk of bias judgement	Low	
Bias in selection of the reported result	5.1 Were the data that produced this result analysed in accordance with a pre-specified analysis plan that was finalized before unblinded outcome data were available for analysis?	NI	
	5.2 ... multiple eligible outcome measurements (e.g. scales, definitions, time points) within the outcome domain?	NI	
	5.3 ... multiple eligible analyses of the data?	NI	
	Risk of bias judgement	Some concerns	

Overall bias	Risk of bias judgement			High	The authors did not give enough information about the randomization and allocation process. Anxiety scores of the two groups differed at baseline, possibly biasing the comparison between group at t2 as no baseline correction has been carried out. Indeed, significant decrease in anxiety scores was found in the prebiotic group (<0,05) only, but the comparison between placebo and experimental group means at t2 does not reflect such effect (d=0,6). Finally, the authors did not provide a participant flow diagram or information about adherence and missing data.
Unique ID	K11BAI	Study ID	Kie11	Assessor	
Ref or Label	Kiecolt-Glaser 2011	Aim	assignment to intervention (the 'intention-to-treat' effect)		
Experimental	prebiotic	Comparator	placebo	Source	Non-commercial trial registry record (e.g. ClinicalTrials.gov record)
Outcome	BAI	Results	-0,61	Weight	10.6

Domain	Signalling question	Response	Comments
Bias arising from the randomization process	1.1 Was the allocation sequence random?	Y	
	1.2 Was the allocation sequence concealed until participants were enrolled and assigned to interventions?	Y	
	1.3 Did baseline differences between intervention groups suggest a problem with the randomization process?	PN	
	Risk of bias judgement	Low	
Bias due to deviations from intended interventions	2.1. Were participants aware of their assigned intervention during the trial?	N	
	2.2. Were carers and people delivering the interventions aware of participants' assigned intervention during the trial?	N	
	2.3. If Y/PY/NI to 2.1 or 2.2: Were there deviations from the intended intervention that arose because of the experimental context?	NA	
	2.4 If Y/PY to 2.3: Were these deviations likely to have affected the outcome?	NA	
	2.5. If Y/PY/NI to 2.4: Were these deviations from intended intervention balanced between groups?	NA	
	2.6 Was an appropriate analysis used to estimate the effect of assignment to intervention?	Y	
	2.7 If N/PN/NI to 2.6: Was there potential for a substantial impact (on the result) of the failure to analyse participants in the group to which they were randomized?	NA	
	Risk of bias judgement	Low	
Bias due to missing outcome data	3.1 Were data for this outcome available for all, or nearly all, participants randomized?	Y	
	3.2 If N/PN/NI to 3.1: Is there evidence that result was not biased by missing outcome data?	NA	
	3.3 If N/PN to 3.2: Could missingness in the outcome depend on its true value?	NA	
	3.4 If Y/PY/NI to 3.3: Is it likely that missingness in the outcome depended on its true value?	NA	
	Risk of bias judgement	Low	
Bias in measurement of the outcome	4.1 Was the method of measuring the outcome inappropriate?	N	
	4.2 Could measurement or ascertainment of the outcome have differed between intervention groups?	N	
	4.3 Were outcome assessors aware of the intervention received by study participants?	N	

	4.4 If Y/PY/NI to 4.3: Could assessment of the outcome have been influenced by knowledge of intervention received?			NA	
	4.5 If Y/PY/NI to 4.4: Is it likely that assessment of the outcome was influenced by knowledge of intervention received?			NA	
	Risk of bias judgement			Low	
Bias in selection of the reported result	5.1 Were the data that produced this result analysed in accordance with a pre-specified analysis plan that was finalized before unblinded outcome data were available for analysis?			NI	The trial protocol pre-specifies how the outcomes will be treated but not how statistically analysed
	5.2 ... multiple eligible outcome measurements (e.g. scales, definitions, time points) within the outcome domain?			N	
	5.3 ... multiple eligible analyses of the data?			N	
	Risk of bias judgement			Low	In the paper authors mentioned pre-planned analysis to be in line with the performed analysis.
Overall bias	Risk of bias judgement			Low	
Unique ID	L188CBCL	Study ID	Liu19	Assessor	
Ref or Label	Liu 2019	Aim	assignment to intervention (the 'intention-to-treat' effect)		
Experimental	probiotic	Comparator	placebo	Source	Non-commercial trial registry record (e.g. ClinicalTrials.gov record)
Outcome	CBCL	Results	-0,05	Weight	11.4
Domain	Signalling question			Response	Comments
Bias arising from the randomiz	1.1 Was the allocation sequence random?			Y	
	1.2 Was the allocation sequence concealed until participants were enrolled and assigned to interventions?			Y	

Randomization process	1.3 Did baseline differences between intervention groups suggest a problem with the randomization process?	N	
	Risk of bias judgement	Low	
Bias due to deviations from intended interventions	2.1. Were participants aware of their assigned intervention during the trial?	N	
	2.2. Were carers and people delivering the interventions aware of participants' assigned intervention during the trial?	N	
	2.3. If Y/PY/NI to 2.1 or 2.2: Were there deviations from the intended intervention that arose because of the experimental context?	N	
	2.4 If Y/PY to 2.3: Were these deviations likely to have affected the outcome?	NA	
	2.5. If Y/PY/NI to 2.4: Were these deviations from intended intervention balanced between groups?	NA	
	2.6 Was an appropriate analysis used to estimate the effect of assignment to intervention?	N	Participants who discontinued the intervention were excluded from the analysis
	2.7 If N/PN/NI to 2.6: Was there potential for a substantial impact (on the result) of the failure to analyse participants in the group to which they were randomized?	PN	
	Risk of bias judgement	Some concerns	
Bias due to missing outcome data	3.1 Were data for this outcome available for all, or nearly all, participants randomized?	N	
	3.2 If N/PN/NI to 3.1: Is there evidence that result was not biased by missing outcome data?	N	
	3.3 If N/PN to 3.2: Could missingness in the outcome depend on its true value?	PN	
	3.4 If Y/PY/NI to 3.3: Is it likely that missingness in the outcome depended on its true value?	NA	
	Risk of bias judgement	Low	
Bias in measurement of the outcome	4.1 Was the method of measuring the outcome inappropriate?	N	
	4.2 Could measurement or ascertainment of the outcome have differed between intervention groups?	N	
	4.3 Were outcome assessors aware of the intervention received by study participants?	N	
	4.4 If Y/PY/NI to 4.3: Could assessment of the outcome have been influenced by knowledge of intervention received?	NA	

	4.5 If Y/PY/NI to 4.4: Is it likely that assessment of the outcome was influenced by knowledge of intervention received?			NA	
	Risk of bias judgement			Low	
Bias in selection of the reported result	5.1 Were the data that produced this result analysed in accordance with a pre-specified analysis plan that was finalized before unblinded outcome data were available for analysis?			NI	Tn the trial protocol there is no pre-specified analysis information
	5.2 ... multiple eligible outcome measurements (e.g. scales, definitions, time points) within the outcome domain?			N	
	5.3 ... multiple eligible analyses of the data?			NI	
	Risk of bias judgement			Some concerns	
Overall bias	Risk of bias judgement			Some concerns	
Unique ID	M18BAIT	Study ID	Man18	Assessor	
Ref or Label	Manos 2018	Aim	assignment to intervention (the 'intention-to-treat' effect)		
Experimental	prebiotic	Comparator	placebo	Source	
Outcome	BAIT	Results	1,08	Weight	2.8
Domain	Signalling question			Response	Comments
Bias arising from the randomization process	1.1 Was the allocation sequence random?			Y	
	1.2 Was the allocation sequence concealed until participants were enrolled and assigned to interventions?			Y	
	1.3 Did baseline differences between intervention groups suggest a problem with the randomization process?			PY	Mean trait anxiety scores are higher in the omega-3 PUFA group (severe anxiety) compared to the placebo group (moderate anxiety)
	Risk of bias judgement			Some concerns	

Bias due to deviation s from intended interventi ons	2.1. Were participants aware of their assigned intervention during the trial?	N	
	2.2. Were carers and people delivering the interventions aware of participants' assigned intervention during the trial?	N	
	2.3. If Y/PY/NI to 2.1 or 2.2: Were there deviations from the intended intervention that arose because of the experimental context?	NA	
	2.4 If Y/PY to 2.3: Were these deviations likely to have affected the outcome?	NA	
	2.5. If Y/PY/NI to 2.4: Were these deviations from intended intervention balanced between groups?	NA	
	2.6 Was an appropriate analysis used to estimate the effect of assignment to intervention?	Y	
	2.7 If N/PN/NI to 2.6: Was there potential for a substantial impact (on the result) of the failure to analyse participants in the group to which they were randomized?	NA	
	Risk of bias judgement	Low	
Bias due to missing outcome data	3.1 Were data for this outcome available for all, or nearly all, participants randomized?	N	
	3.2 If N/PN/NI to 3.1: Is there evidence that result was not biased by missing outcome data?	N	
	3.3 If N/PN to 3.2: Could missingness in the outcome depend on its true value?	NI	
	3.4 If Y/PY/NI to 3.3: Is it likely that missingness in the outcome depended on its true value?	PN	
	Risk of bias judgement	Some concerns	
Bias in measure ment of the outcome	4.1 Was the method of measuring the outcome inappropriate?	PY	State anxiety should have been measured as well, as more sensible to potential transient reactions related to the intervention
	4.2 Could measurement or ascertainment of the outcome have differed between intervention groups?	N	
	4.3 Were outcome assessors aware of the intervention received by study participants?	NA	
	4.4 If Y/PY/NI to 4.3: Could assessment of the outcome have been influenced by knowledge of intervention received?	NA	
	4.5 If Y/PY/NI to 4.4: Is it likely that assessment of the outcome was influenced by knowledge of intervention received?	NA	
	Risk of bias judgement	High	

Bias in selection of the reported result	5.1 Were the data that produced this result analysed in accordance with a pre-specified analysis plan that was finalized before unblinded outcome data were available for analysis?			NI	
	5.2 ... multiple eligible outcome measurements (e.g. scales, definitions, time points) within the outcome domain?			NI	
	5.3 ... multiple eligible analyses of the data?			NI	
	Risk of bias judgement			Some concerns	
Overall bias	Risk of bias judgement			High	
Unique ID	M04STAIS	Study ID	Marco04	Assessor	
Ref or Label	Marcos 2004	Aim	assignment to intervention (the 'intention-to-treat' effect)		
Experimental	probiotic	Comparator	placebo	Source	
Outcome	STAI-state	Results	-0,24	Weight	18.6
Domain	Signalling question			Response	Comments
Bias arising from the randomization process	1.1 Was the allocation sequence random?			NI	
	1.2 Was the allocation sequence concealed until participants were enrolled and assigned to interventions?			NI	
	1.3 Did baseline differences between intervention groups suggest a problem with the randomization process?			N	
	Risk of bias judgement			Some concerns	
Bias due to deviations from intended interventions	2.1.Were participants aware of their assigned intervention during the trial?			PY	The study design is not described as blinded/double blinded.
	2.2.Were carers and people delivering the interventions aware of participants' assigned intervention during the trial?			PY	
	2.3. If Y/PY/NI to 2.1 or 2.2: Were there deviations from the intended intervention that arose because of the experimental context?			N	

	2.4 If Y/PY to 2.3: Were these deviations likely to have affected the outcome?	NA	
	2.5. If Y/PY/NI to 2.4: Were these deviations from intended intervention balanced between groups?	NA	
	2.6 Was an appropriate analysis used to estimate the effect of assignment to intervention?	NI	
	2.7 If N/PN/NI to 2.6: Was there potential for a substantial impact (on the result) of the failure to analyse participants in the group to which they were randomized?	NI	
	Risk of bias judgement	High	
Bias due to missing outcome data	3.1 Were data for this outcome available for all, or nearly all, participants randomized?	N	
	3.2 If N/PN/NI to 3.1: Is there evidence that result was not biased by missing outcome data?	N	
	3.3 If N/PN to 3.2: Could missingness in the outcome depend on its true value?	PN	
	3.4 If Y/PY/NI to 3.3: Is it likely that missingness in the outcome depended on its true value?	NA	
	Risk of bias judgement	Low	
Bias in measure ment of the outcome	4.1 Was the method of measuring the outcome inappropriate?	N	
	4.2 Could measurement or ascertainment of the outcome have differed between intervention groups?	N	
	4.3 Were outcome assessors aware of the intervention received by study participants?	PY	
	4.4 If Y/PY/NI to 4.3: Could assessment of the outcome have been influenced by knowledge of intervention received?	PY	
	4.5 If Y/PY/NI to 4.4: Is it likely that assessment of the outcome was influenced by knowledge of intervention received?	PN	
	Risk of bias judgement	Some concerns	
Bias in selection of the reported result	5.1 Were the data that produced this result analysed in accordance with a pre-specified analysis plan that was finalized before unblinded outcome data were available for analysis?	NI	
	5.2 ... multiple eligible outcome measurements (e.g. scales, definitions, time points) within the outcome domain?	NI	
	5.3 ... multiple eligible analyses of the data?	NI	
	Risk of bias judgement	Some concerns	

Overall bias	Risk of bias judgement			High	Controlled parallel group design, not placebo-controlled, not double-blinded.
Unique ID	M04STAIT	Study ID	Marco04	Assessor	
Ref or Label	Marcos 2004	Aim	assignment to intervention (the 'intention-to-treat' effect)		
Experimental	probiotic	Comparator	placebo	Source	
Outcome	STAI trait	Results	-0,03	Weight	0
Domain	Signalling question			Response	Comments
Bias arising from the randomization process	1.1 Was the allocation sequence random?			NI	
	1.2 Was the allocation sequence concealed until participants were enrolled and assigned to interventions?			NI	
	1.3 Did baseline differences between intervention groups suggest a problem with the randomization process?			N	
	Risk of bias judgement			Some concerns	
Bias due to deviations from intended interventions	2.1. Were participants aware of their assigned intervention during the trial?			PY	
	2.2. Were carers and people delivering the interventions aware of participants' assigned intervention during the trial?			PY	
	2.3. If Y/PY/NI to 2.1 or 2.2: Were there deviations from the intended intervention that arose because of the experimental context?			N	
	2.4 If Y/PY to 2.3: Were these deviations likely to have affected the outcome?			NA	
	2.5. If Y/PY/NI to 2.4: Were these deviations from intended intervention balanced between groups?			NA	
	2.6 Was an appropriate analysis used to estimate the effect of assignment to intervention?			NI	
	2.7 If N/PN/NI to 2.6: Was there potential for a substantial impact (on the result) of the failure to analyse participants in the group to which they were randomized?			NI	

	Risk of bias judgement			High	
Bias due to missing outcome data	3.1 Were data for this outcome available for all, or nearly all, participants randomized?			N	
	3.2 If N/PN/NI to 3.1: Is there evidence that result was not biased by missing outcome data?			N	
	3.3 If N/PN to 3.2: Could missingness in the outcome depend on its true value?			PN	
	3.4 If Y/PY/NI to 3.3: Is it likely that missingness in the outcome depended on its true value?			NA	
	Risk of bias judgement			Low	
Bias in measurement of the outcome	4.1 Was the method of measuring the outcome inappropriate?			N	
	4.2 Could measurement or ascertainment of the outcome have differed between intervention groups?			N	
	4.3 Were outcome assessors aware of the intervention received by study participants?			PY	
	4.4 If Y/PY/NI to 4.3: Could assessment of the outcome have been influenced by knowledge of intervention received?			PY	
	4.5 If Y/PY/NI to 4.4: Is it likely that assessment of the outcome was influenced by knowledge of intervention received?			PN	
	Risk of bias judgement			Some concerns	
Bias in selection of the reported result	5.1 Were the data that produced this result analysed in accordance with a pre-specified analysis plan that was finalized before unblinded outcome data were available for analysis?			NI	
	5.2 ... multiple eligible outcome measurements (e.g. scales, definitions, time points) within the outcome domain?			NI	
	5.3 ... multiple eligible analyses of the data?			NI	
	Risk of bias judgement			Some concerns	
Overall bias	Risk of bias judgement			High	
Unique ID	S14STAISF	Study ID	Sch14	Assessor	
Ref or Label	Schmidt	Aim	assignment to intervention (the		

			'intention-to-treat' effect)		
Experimental	prebiotic FOS	Comparator	placebo	Source	Non-commercial trial registry record (e.g. ClinicalTrials.gov record)
Outcome	STAI-state	Results	-0,02	Weight	5.4
Domain	Signalling question			Response	Comments
Bias arising from the randomization process	1.1 Was the allocation sequence random?			NI	
	1.2 Was the allocation sequence concealed until participants were enrolled and assigned to interventions?			NI	
	1.3 Did baseline differences between intervention groups suggest a problem with the randomization process?			N	
	Risk of bias judgement			Some concerns	
Bias due to deviations from intended interventions	2.1. Were participants aware of their assigned intervention during the trial?			N	
	2.2. Were carers and people delivering the interventions aware of participants' assigned intervention during the trial?			N	
	2.3. If Y/PY/NI to 2.1 or 2.2: Were there deviations from the intended intervention that arose because of the experimental context?			NI	
	2.4 If Y/PY to 2.3: Were these deviations likely to have affected the outcome?			NA	
	2.5. If Y/PY/NI to 2.4: Were these deviations from intended intervention balanced between groups?			NA	
	2.6 Was an appropriate analysis used to estimate the effect of assignment to intervention?			N	
	2.7 If N/PN/NI to 2.6: Was there potential for a substantial impact (on the result) of the failure to analyse participants in the group to which they were randomized?			N	
	Risk of bias judgement			Some concerns	
Bias due to missing outcome data	3.1 Were data for this outcome available for all, or nearly all, participants randomized?			N	Data were available for 93,75% of the participants (to be sufficient it should be 95% based on the Risk of Bias tool assessment RoB2.0)

	3.2 If N/PN/NI to 3.1: Is there evidence that result was not biased by missing outcome data?	N	No sensitivity analysis was performed
	3.3 If N/PN to 3.2: Could missingness in the outcome depend on its true value?	NI	Reasons for drop-out are not reported
	3.4 If Y/PY/NI to 3.3: Is it likely that missingness in the outcome depended on its true value?	PN	
	Risk of bias judgement	Some concerns	
Bias in measure ment of the outcome	4.1 Was the method of measuring the outcome inappropriate?	N	
	4.2 Could measurement or ascertainment of the outcome have differed between intervention groups?	N	
	4.3 Were outcome assessors aware of the intervention received by study participants?	N	
	4.4 If Y/PY/NI to 4.3: Could assessment of the outcome have been influenced by knowledge of intervention received?	NA	
	4.5 If Y/PY/NI to 4.4: Is it likely that assessment of the outcome was influenced by knowledge of intervention received?	NA	
	Risk of bias judgement	Low	
Bias in selection of the reported result	5.1 Were the data that produced this result analysed in accordance with a pre-specified analysis plan that was finalized before unblinded outcome data were available for analysis?	NI	
	5.2 ... multiple eligible outcome measurements (e.g. scales, definitions, time points) within the outcome domain?	NI	In the trial protocol authors do not mention any self-reported anxiety outcome
	5.3 ... multiple eligible analyses of the data?	NI	SAP are not reported
	Risk of bias judgement	Some concerns	
Overall bias	Risk of bias judgement	Some concerns	Overall good quality but some relevant information in regards with the study design are not reported, reason for missing data neither, and a statistical analysis plan is not available

Unique ID	S14STAISBG	Study ID	Sch14	Assessor	
Ref or Label	Schmidt 2014	Aim	assignment to intervention (the 'intention-to-treat' effect)		
Experimental	prebiotic B-GOS	Comparator	placebo	Source	Non-commercial trial registry record (e.g. ClinicalTrials.gov record)
Outcome	STAI-state	Results	0,01	Weight	5.4
Domain	Signalling question			Response	Comments
Bias arising from the randomization process	1.1 Was the allocation sequence random?			NI	
	1.2 Was the allocation sequence concealed until participants were enrolled and assigned to interventions?			NI	
	1.3 Did baseline differences between intervention groups suggest a problem with the randomization process?			N	
	Risk of bias judgement			Some concerns	
Bias due to deviations from intended interventions	2.1. Were participants aware of their assigned intervention during the trial?			N	
	2.2. Were carers and people delivering the interventions aware of participants' assigned intervention during the trial?			N	
	2.3. If Y/PY/NI to 2.1 or 2.2: Were there deviations from the intended intervention that arose because of the experimental context?			NI	
	2.4 If Y/PY to 2.3: Were these deviations likely to have affected the outcome?			NA	
	2.5. If Y/PY/NI to 2.4: Were these deviations from intended intervention balanced between groups?			NA	
	2.6 Was an appropriate analysis used to estimate the effect of assignment to intervention?			N	
	2.7 If N/PN/NI to 2.6: Was there potential for a substantial impact (on the result) of the failure to analyse participants in the group to which they were randomized?			N	
	Risk of bias judgement			Some concerns	
Bias due to	3.1 Were data for this outcome available for all, or nearly all, participants randomized?			N	

missing outcome data	3.2 If N/PN/NI to 3.1: Is there evidence that result was not biased by missing outcome data?			N	
	3.3 If N/PN to 3.2: Could missingness in the outcome depend on its true value?			NI	
	3.4 If Y/PY/NI to 3.3: Is it likely that missingness in the outcome depended on its true value?			PN	
	Risk of bias judgement			Some concerns	
Bias in measure ment of the outcome	4.1 Was the method of measuring the outcome inappropriate?			N	
	4.2 Could measurement or ascertainment of the outcome have differed between intervention groups?			N	
	4.3 Were outcome assessors aware of the intervention received by study participants?			N	
	4.4 If Y/PY/NI to 4.3: Could assessment of the outcome have been influenced by knowledge of intervention received?			NA	
	4.5 If Y/PY/NI to 4.4: Is it likely that assessment of the outcome was influenced by knowledge of intervention received?			NA	
	Risk of bias judgement			Low	
Bias in selection of the reported result	5.1 Were the data that produced this result analysed in accordance with a pre-specified analysis plan that was finalized before unblinded outcome data were available for analysis?			NI	
	5.2 ... multiple eligible outcome measurements (e.g. scales, definitions, time points) within the outcome domain?			NI	
	5.3 ... multiple eligible analyses of the data?			NI	
	Risk of bias judgement			Some concerns	
Overall bias	Risk of bias judgement			Some concerns	
Unique ID	T19BAIP	Study ID	Tra19	Assessor	
Ref or Label	Tran 2019	Aim	assignment to intervention (the 'intention-to-treat' effect)		
Experimental	multispecies probiotic	Comparator	placebo	Source	

Outcome	BAI all conditions	Results	4/ 4.2/ 4.4/ 4.3	Weight	16.9
Domain	Signalling question			Response	Comments
Bias arising from the randomization process	1.1 Was the allocation sequence random?			PY	Randomization performed in Excel. No detailed info about allocation methods, just stated that the leader investigator (not in direct contact with subjects) was aware of the assigned intervention
	1.2 Was the allocation sequence concealed until participants were enrolled and assigned to interventions?			NI	
	1.3 Did baseline differences between intervention groups suggest a problem with the randomization process?			N	
	Risk of bias judgement			Some concerns	
Bias due to deviations from intended interventions	2.1. Were participants aware of their assigned intervention during the trial?			N	
	2.2. Were carers and people delivering the interventions aware of participants' assigned intervention during the trial?			N	
	2.3. If Y/PY/NI to 2.1 or 2.2: Were there deviations from the intended intervention that arose because of the experimental context?			NI	
	2.4 If Y/PY to 2.3: Were these deviations likely to have affected the outcome?			NA	
	2.5. If Y/PY/NI to 2.4: Were these deviations from intended intervention balanced between groups?			NA	
	2.6 Was an appropriate analysis used to estimate the effect of assignment to intervention?			N	Participants who discontinued the intervention were not analysed
	2.7 If N/PN/NI to 2.6: Was there potential for a substantial impact (on the result) of the failure to analyse participants in the group to which they were randomized?			NI	
	Risk of bias judgement			High	
Bias due to missing outcome data	3.1 Were data for this outcome available for all, or nearly all, participants randomized?			N	
	3.2 If N/PN/NI to 3.1: Is there evidence that result was not biased by missing outcome data?			N	
	3.3 If N/PN to 3.2: Could missingness in the outcome depend on its true value?			NI	

	3.4 If Y/PY/NI to 3.3: Is it likely that missingness in the outcome depended on its true value?	PN	
	Risk of bias judgement	Some concerns	
Bias in measurement of the outcome	4.1 Was the method of measuring the outcome inappropriate?	N	
	4.2 Could measurement or ascertainment of the outcome have differed between intervention groups?	N	
	4.3 Were outcome assessors aware of the intervention received by study participants?	N	
	4.4 If Y/PY/NI to 4.3: Could assessment of the outcome have been influenced by knowledge of intervention received?	NA	
	4.5 If Y/PY/NI to 4.4: Is it likely that assessment of the outcome was influenced by knowledge of intervention received?	NA	
	Risk of bias judgement	Low	
Bias in selection of the reported result	5.1 Were the data that produced this result analysed in accordance with a pre-specified analysis plan that was finalized before unblinded outcome data were available for analysis?	NI	
	5.2 ... multiple eligible outcome measurements (e.g. scales, definitions, time points) within the outcome domain?	NI	
	5.3 ... multiple eligible analyses of the data?	NI	
	Risk of bias judgement	Some concerns	
Overall bias	Risk of bias judgement	High	No enough information about the randomization and allocation process, no enough information about adherence to the intervention and reasons of missing data, no applied analysis to account for that, no trial protocol/SAP available.
Unique ID	K16STAIS	Study ID	Kat16
		Assessor	

Ref or Label	Kato-Kataoka 2016a	Aim	assignment to intervention (the 'intention-to-treat' effect)		
Experimental	probiotic	Comparator	placebo	Source	Company-owned trial registry record (e.g. GSK Clinical Study Register record)
Outcome	STAI-state	Results	-0.09	Weight	7.9
Domain	Signalling question			Response	Comments
Bias arising from the randomization process	1.1 Was the allocation sequence random?			PN	Authors never mention any sequence randomization
	1.2 Was the allocation sequence concealed until participants were enrolled and assigned to interventions?			NI	
	1.3 Did baseline differences between intervention groups suggest a problem with the randomization process?			N	
	Risk of bias judgement			Some concerns	
Bias due to deviations from intended interventions	2.1. Were participants aware of their assigned intervention during the trial?			N	
	2.2. Were carers and people delivering the interventions aware of participants' assigned intervention during the trial?			N	
	2.3. If Y/PY/NI to 2.1 or 2.2: Were there deviations from the intended intervention that arose because of the experimental context?			N	
	2.4 If Y/PY to 2.3: Were these deviations likely to have affected the outcome?			NA	
	2.5. If Y/PY/NI to 2.4: Were these deviations from intended intervention balanced between groups?			NA	
	2.6 Was an appropriate analysis used to estimate the effect of assignment to intervention?			Y	Post-allocation exclusion of participants who are no longer eligible independently from the group assignment (students who were not undergoing the final examination) can be considered appropriate
	2.7 If N/PN/NI to 2.6: Was there potential for a substantial impact (on the result) of the failure to			NA	

	analyse participants in the group to which they were randomized?		
	Risk of bias judgement	Low	
Bias due to missing outcome data	3.1 Were data for this outcome available for all, or nearly all, participants randomized?	Y	Participants that dropped out did so before starting the test beverages
	3.2 If N/PN/NI to 3.1: Is there evidence that result was not biased by missing outcome data?	NA	
	3.3 If N/PN to 3.2: Could missingness in the outcome depend on its true value?	NA	
	3.4 If Y/PY/NI to 3.3: Is it likely that missingness in the outcome depended on its true value?	NA	
	Risk of bias judgement	Low	
Bias in measurement of the outcome	4.1 Was the method of measuring the outcome inappropriate?	N	
	4.2 Could measurement or ascertainment of the outcome have differed between intervention groups?	N	
	4.3 Were outcome assessors aware of the intervention received by study participants?	N	
	4.4 If Y/PY/NI to 4.3: Could assessment of the outcome have been influenced by knowledge of intervention received?	NA	
	4.5 If Y/PY/NI to 4.4: Is it likely that assessment of the outcome was influenced by knowledge of intervention received?	NA	
	Risk of bias judgement	Low	
Bias in selection of the reported result	5.1 Were the data that produced this result analysed in accordance with a pre-specified analysis plan that was finalized before unblinded outcome data were available for analysis?	NI	The trial registration record does not mention any of these details
	5.2 ... multiple eligible outcome measurements (e.g. scales, definitions, time points) within the outcome domain?	NI	
	5.3 ... multiple eligible analyses of the data?	NI	
	Risk of bias judgement	Some concerns	
Overall bias	Risk of bias judgement	Some concerns	

Unique ID	K16bSTAlS	Study ID	Kat16b	Assessor	
Ref or Label	Kato-Kataoka 2016b	Aim	assignment to intervention (the 'intention-to-treat' effect)		
Experimental	probiotic	Comparator	placebo	Source	
Outcome	STAl-state	Results	0.21	Weight	8
Domain	Signalling question			Response	Comments
Bias arising from the randomization process	1.1 Was the allocation sequence random?			N	It was based on the participants background data
	1.2 Was the allocation sequence concealed until participants were enrolled and assigned to interventions?			NI	
	1.3 Did baseline differences between intervention groups suggest a problem with the randomization process?			Y	STAl scores at baseline significantly differed between probiotic and placebo group (p<0,05)
	Risk of bias judgement			High	
Bias due to deviations from intended interventions	2.1. Were participants aware of their assigned intervention during the trial?			N	
	2.2. Were carers and people delivering the interventions aware of participants' assigned intervention during the trial?			N	
	2.3. If Y/PY/NI to 2.1 or 2.2: Were there deviations from the intended intervention that arose because of the experimental context?			N	
	2.4 If Y/PY to 2.3: Were these deviations likely to have affected the outcome?			NA	
	2.5. If Y/PY/NI to 2.4: Were these deviations from intended intervention balanced between groups?			NA	
	2.6 Was an appropriate analysis used to estimate the effect of assignment to intervention?			Y	Post-allocation exclusion of participants who are no longer eligible independently from the group assignment (students who were not undergoing the final examination) can be considered appropriate

	2.7 If N/PN/NI to 2.6: Was there potential for a substantial impact (on the result) of the failure to analyse participants in the group to which they were randomized?	NA	
	Risk of bias judgement	Low	
Bias due to missing outcome data	3.1 Were data for this outcome available for all, or nearly all, participants randomized?	N	
	3.2 If N/PN/NI to 3.1: Is there evidence that result was not biased by missing outcome data?	N	
	3.3 If N/PN to 3.2: Could missingness in the outcome depend on its true value?	N	Missing data comes from participants excluded due to failure in gaining enough credits to undergo the examination
	3.4 If Y/PY/NI to 3.3: Is it likely that missingness in the outcome depended on its true value?	NA	
	Risk of bias judgement	Low	
Bias in measure ment of the outcome	4.1 Was the method of measuring the outcome inappropriate?	N	
	4.2 Could measurement or ascertainment of the outcome have differed between intervention groups?	N	
	4.3 Were outcome assessors aware of the intervention received by study participants?	N	
	4.4 If Y/PY/NI to 4.3: Could assessment of the outcome have been influenced by knowledge of intervention received?	NA	
	4.5 If Y/PY/NI to 4.4: Is it likely that assessment of the outcome was influenced by knowledge of intervention received?	NA	
	Risk of bias judgement	Low	
Bias in selection of the reported result	5.1 Were the data that produced this result analysed in accordance with a pre-specified analysis plan that was finalized before unblinded outcome data were available for analysis?	NI	
	5.2 ... multiple eligible outcome measurements (e.g. scales, definitions, time points) within the outcome domain?	NI	
	5.3 ... multiple eligible analyses of the data?	NI	
	Risk of bias judgement	Some concerns	

Overall bias	Risk of bias judgement	High	There might have been some allocation problems or occurrence of confounding factors between the background data recording and baseline measurement as the STAI scores of the active group is significantly higher in respect with the placebo group at baseline.
---------------------	-------------------------------	-------------	--

APPENDIX 4: Risk of Bias Assessment of stress studies

Unique ID	A16	Study ID	And16	Assessor	
Ref or Label	Andersson (2016)	Aim	assignment to intervention (the 'intention-to-treat' effect)		
Experimental	probiotic	Comparator	placebo	Source	
Outcome	salivary cortisol and immunoglobulin A	Results		Weight	1
Domain	Signalling question			Response	Comments
Bias arising from the randomization process	1.1 Was the allocation sequence random?			NI	
	1.2 Was the allocation sequence concealed until participants were enrolled and assigned to interventions?			NI	
	1.3 Did baseline differences between intervention groups suggest a problem with the randomization process?			N	
	Risk of bias judgement			Some concerns	
Bias due to deviations from intended interventions	2.1. Were participants aware of their assigned intervention during the trial?			N	
	2.2. Were carers and people delivering the interventions aware of participants' assigned intervention during the trial?			N	
	2.3. If Y/PY/NI to 2.1 or 2.2: Were there deviations from the intended intervention that arose because of the experimental context?			NA	

	2.4 If Y/PY to 2.3: Were these deviations likely to have affected the outcome?	NA	
	2.5. If Y/PY/NI to 2.4: Were these deviations from intended intervention balanced between groups?	NA	
	2.6 Was an appropriate analysis used to estimate the effect of assignment to intervention?	NI	
	2.7 If N/PN/NI to 2.6: Was there potential for a substantial impact (on the result) of the failure to analyse participants in the group to which they were randomized?	N	
	Risk of bias judgement	Some concerns	
Bias due to missing outcome data	3.1 Were data for this outcome available for all, or nearly all, participants randomized?	Y	
	3.2 If N/PN/NI to 3.1: Is there evidence that result was not biased by missing outcome data?	NA	
	3.3 If N/PN to 3.2: Could missingness in the outcome depend on its true value?	NA	
	3.4 If Y/PY/NI to 3.3: Is it likely that missingness in the outcome depended on its true value?	NA	
	Risk of bias judgement	Low	
Bias in measurement of the outcome	4.1 Was the method of measuring the outcome inappropriate?	N	
	4.2 Could measurement or ascertainment of the outcome have differed between intervention groups?	N	
	4.3 Were outcome assessors aware of the intervention received by study participants?	N	
	4.4 If Y/PY/NI to 4.3: Could assessment of the outcome have been influenced by knowledge of intervention received?	NA	
	4.5 If Y/PY/NI to 4.4: Is it likely that assessment of the outcome was influenced by knowledge of intervention received?	NA	
	Risk of bias judgement	Low	
Bias in selection of the reported result	5.1 Were the data that produced this result analysed in accordance with a pre-specified analysis plan that was finalized before unblinded outcome data were available for analysis?	NI	
	5.2 ... multiple eligible outcome measurements (e.g. scales, definitions, time points) within the outcome domain?	NI	
	5.3 ... multiple eligible analyses of the data?	NI	
	Risk of bias judgement	Some concerns	

Overall bias	Risk of bias judgement			Some concerns	
Unique ID	C16	Study ID	Cul16	Assessor	
Ref or Label	Culpepper (2016)	Aim	assignment to intervention (the 'intention-to-treat' effect)		
Experimental	probiotic	Comparator	placebo	Source	
Outcome	self-reported stress	Results		Weight	1
Domain	Signalling question			Response	Comments
Bias arising from the randomization process	1.1 Was the allocation sequence random?			Y	
	1.2 Was the allocation sequence concealed until participants were enrolled and assigned to interventions?			PY	
	1.3 Did baseline differences between intervention groups suggest a problem with the randomization process?			N	
	Risk of bias judgement			Low	
Bias due to deviations from intended interventions	2.1. Were participants aware of their assigned intervention during the trial?			N	
	2.2. Were carers and people delivering the interventions aware of participants' assigned intervention during the trial?			N	
	2.3. If Y/PY/NI to 2.1 or 2.2: Were there deviations from the intended intervention that arose because of the experimental context?			NA	
	2.4 If Y/PY to 2.3: Were these deviations likely to have affected the outcome?			NA	
	2.5. If Y/PY/NI to 2.4: Were these deviations from intended intervention balanced between groups?			NA	
	2.6 Was an appropriate analysis used to estimate the effect of assignment to intervention?			Y	
	2.7 If N/PN/NI to 2.6: Was there potential for a substantial impact (on the result) of the failure to analyse participants in the group to which they were randomized?			NA	
	Risk of bias judgement			Low	

Bias due to missing outcome data	3.1 Were data for this outcome available for all, or nearly all, participants randomized?			Y	
	3.2 If N/PN/NI to 3.1: Is there evidence that result was not biased by missing outcome data?			NA	
	3.3 If N/PN to 3.2: Could missingness in the outcome depend on its true value?			NA	
	3.4 If Y/PY/NI to 3.3: Is it likely that missingness in the outcome depended on its true value?			NA	
	Risk of bias judgement			Low	
Bias in measurement of the outcome	4.1 Was the method of measuring the outcome inappropriate?			N	
	4.2 Could measurement or ascertainment of the outcome have differed between intervention groups?			N	
	4.3 Were outcome assessors aware of the intervention received by study participants?			N	
	4.4 If Y/PY/NI to 4.3: Could assessment of the outcome have been influenced by knowledge of intervention received?			NA	
	4.5 If Y/PY/NI to 4.4: Is it likely that assessment of the outcome was influenced by knowledge of intervention received?			NA	
	Risk of bias judgement			Low	
Bias in selection of the reported result	5.1 Were the data that produced this result analysed in accordance with a pre-specified analysis plan that was finalized before unblinded outcome data were available for analysis?			NI	
	5.2 ... multiple eligible outcome measurements (e.g. scales, definitions, time points) within the outcome domain?			NI	
	5.3 ... multiple eligible analyses of the data?			NI	
	Risk of bias judgement			Some concerns	
Overall bias	Risk of bias judgement			Some concerns	
Unique ID	H11	Study ID	Hug11	Assessor	
Ref or Label	Hughes (2011)	Aim	assignment to intervention (the 'intention-to-treat' effect)		

Experimental	prebiotics	Comparator	placebo	Source	
Outcome	self-reported stress	Results		Weight	1
Domain	Signalling question			Response	Comments
Bias arising from the randomization process	1.1 Was the allocation sequence random?			Y	
	1.2 Was the allocation sequence concealed until participants were enrolled and assigned to interventions?			Y	
	1.3 Did baseline differences between intervention groups suggest a problem with the randomization process?			PN	
	Risk of bias judgement			Low	
Bias due to deviations from intended interventions	2.1. Were participants aware of their assigned intervention during the trial?			N	
	2.2. Were carers and people delivering the interventions aware of participants' assigned intervention during the trial?			N	
	2.3. If Y/PY/NI to 2.1 or 2.2: Were there deviations from the intended intervention that arose because of the experimental context?			NA	
	2.4 If Y/PY to 2.3: Were these deviations likely to have affected the outcome?			NA	
	2.5. If Y/PY/NI to 2.4: Were these deviations from intended intervention balanced between groups?			NA	
	2.6 Was an appropriate analysis used to estimate the effect of assignment to intervention?			PY	
	2.7 If N/PN/NI to 2.6: Was there potential for a substantial impact (on the result) of the failure to analyse participants in the group to which they were randomized?			NA	
	Risk of bias judgement			Low	
Bias due to missing outcome data	3.1 Were data for this outcome available for all, or nearly all, participants randomized?			N	
	3.2 If N/PN/NI to 3.1: Is there evidence that result was not biased by missing outcome data?			N	
	3.3 If N/PN to 3.2: Could missingness in the outcome depend on its true value?			PN	
	3.4 If Y/PY/NI to 3.3: Is it likely that missingness in the outcome depended on its true value?			NA	
	Risk of bias judgement			Low	
Bias in measure	4.1 Was the method of measuring the outcome inappropriate?			N	

ment of the outcome	4.2 Could measurement or ascertainment of the outcome have differed between intervention groups?			N	
	4.3 Were outcome assessors aware of the intervention received by study participants?			N	
	4.4 If Y/PY/NI to 4.3: Could assessment of the outcome have been influenced by knowledge of intervention received?			NA	
	4.5 If Y/PY/NI to 4.4: Is it likely that assessment of the outcome was influenced by knowledge of intervention received?			NA	
	Risk of bias judgement			Low	
Bias in selection of the reported result	5.1 Were the data that produced this result analysed in accordance with a pre-specified analysis plan that was finalized before unblinded outcome data were available for analysis?			NI	
	5.2 ... multiple eligible outcome measurements (e.g. scales, definitions, time points) within the outcome domain?			NI	
	5.3 ... multiple eligible analyses of the data?			NI	
	Risk of bias judgement			Some concerns	
Overall bias	Risk of bias judgement			Some concerns	
Unique ID	M17	Study ID	Mol17	Assessor	
Ref or Label	Moller (2017)	Aim	assignment to intervention (the 'intention-to-treat' effect)		
Experimental	probiotic	Comparator	placebo	Source	
Outcome	PASAT and blood pressure	Results		Weight	1
Domain	Signalling question			Response	Comments
Bias arising from the randomiz	1.1 Was the allocation sequence random?			Y	
	1.2 Was the allocation sequence concealed until participants were enrolled and assigned to interventions?			PN	

Randomization process	1.3 Did baseline differences between intervention groups suggest a problem with the randomization process?	PN	
	Risk of bias judgement	High	
Bias due to deviations from intended interventions	2.1. Were participants aware of their assigned intervention during the trial?	N	
	2.2. Were carers and people delivering the interventions aware of participants' assigned intervention during the trial?	N	
	2.3. If Y/PY/NI to 2.1 or 2.2: Were there deviations from the intended intervention that arose because of the experimental context?	NA	
	2.4 If Y/PY to 2.3: Were these deviations likely to have affected the outcome?	NA	
	2.5. If Y/PY/NI to 2.4: Were these deviations from intended intervention balanced between groups?	NA	
	2.6 Was an appropriate analysis used to estimate the effect of assignment to intervention?	PY	
	2.7 If N/PN/NI to 2.6: Was there potential for a substantial impact (on the result) of the failure to analyse participants in the group to which they were randomized?	NA	
	Risk of bias judgement	Low	
Bias due to missing outcome data	3.1 Were data for this outcome available for all, or nearly all, participants randomized?	N	
	3.2 If N/PN/NI to 3.1: Is there evidence that result was not biased by missing outcome data?	N	
	3.3 If N/PN to 3.2: Could missingness in the outcome depend on its true value?	PY	5 subjects in the intervention group discontinued due to gastro-intestinal side effects, however the number of drop-outs is not sufficiently high to claim that the missingness of the data is likely to depend on its true value
	3.4 If Y/PY/NI to 3.3: Is it likely that missingness in the outcome depended on its true value?	PN	
	Risk of bias judgement	Some concerns	
Bias in measurement of	4.1 Was the method of measuring the outcome inappropriate?	N	
	4.2 Could measurement or ascertainment of the outcome have differed between intervention groups?	N	

the outcome	4.3 Were outcome assessors aware of the intervention received by study participants?			PY	
	4.4 If Y/PY/NI to 4.3: Could assessment of the outcome have been influenced by knowledge of intervention received?			PN	
	4.5 If Y/PY/NI to 4.4: Is it likely that assessment of the outcome was influenced by knowledge of intervention received?			NA	
	Risk of bias judgement			Low	
Bias in selection of the reported result	5.1 Were the data that produced this result analysed in accordance with a pre-specified analysis plan that was finalized before unblinded outcome data were available for analysis?			NI	
	5.2 ... multiple eligible outcome measurements (e.g. scales, definitions, time points) within the outcome domain?			NI	
	5.3 ... multiple eligible analyses of the data?			NI	
	Risk of bias judgement			Some concerns	
Overall bias	Risk of bias judgement			High	
Unique ID	K20	Study ID	Kar20	Assessor	
Ref or Label	Karbownik (2020)	Aim	assignment to intervention (the 'intention-to-treat' effect)		
Experimental	probiotic	Comparator	placebo	Source	
Outcome	salivary cortisol, metanephrine and pulse rate	Results		Weight	1
Domain	Signalling question			Response	Comments
Bias arising from the randomization process	1.1 Was the allocation sequence random?			Y	
	1.2 Was the allocation sequence concealed until participants were enrolled and assigned to interventions?			Y	
	1.3 Did baseline differences between intervention groups suggest a problem with the randomization process?			N	

	Risk of bias judgement	Low	
Bias due to deviations from intended interventions	2.1. Were participants aware of their assigned intervention during the trial?	N	
	2.2. Were carers and people delivering the interventions aware of participants' assigned intervention during the trial?	N	
	2.3. If Y/PY/NI to 2.1 or 2.2: Were there deviations from the intended intervention that arose because of the experimental context?	NA	
	2.4 If Y/PY to 2.3: Were these deviations likely to have affected the outcome?	NA	
	2.5. If Y/PY/NI to 2.4: Were these deviations from intended intervention balanced between groups?	NA	
	2.6 Was an appropriate analysis used to estimate the effect of assignment to intervention?	PY	
	2.7 If N/PN/NI to 2.6: Was there potential for a substantial impact (on the result) of the failure to analyse participants in the group to which they were randomized?	NA	
	Risk of bias judgement	Low	
Bias due to missing outcome data	3.1 Were data for this outcome available for all, or nearly all, participants randomized?	N	
	3.2 If N/PN/NI to 3.1: Is there evidence that result was not biased by missing outcome data?	PY	ITT = PP analyses
	3.3 If N/PN to 3.2: Could missingness in the outcome depend on its true value?	NA	
	3.4 If Y/PY/NI to 3.3: Is it likely that missingness in the outcome depended on its true value?	NA	
	Risk of bias judgement	Low	
Bias in measurement of the outcome	4.1 Was the method of measuring the outcome inappropriate?	N	
	4.2 Could measurement or ascertainment of the outcome have differed between intervention groups?	N	
	4.3 Were outcome assessors aware of the intervention received by study participants?	N	
	4.4 If Y/PY/NI to 4.3: Could assessment of the outcome have been influenced by knowledge of intervention received?	NA	
	4.5 If Y/PY/NI to 4.4: Is it likely that assessment of the outcome was influenced by knowledge of intervention received?	NA	
	Risk of bias judgement	Low	
Bias in selection	5.1 Were the data that produced this result analysed in accordance with a pre-specified analysis plan that was	NI	

of the reported result	finalized before unblinded outcome data were available for analysis?				
	5.2 ... multiple eligible outcome measurements (e.g. scales, definitions, time points) within the outcome domain?			NI	
	5.3 ... multiple eligible analyses of the data?			NI	
	Risk of bias judgement			Some concerns	
Overall bias	Risk of bias judgement			Some concerns	
Unique ID	K09	Study ID	Kit09	Assessor	
Ref or Label	Kitaoka (2009)	Aim	assignment to intervention (the 'intention-to-treat' effect)		
Experimental	prebiotic	Comparator	placebo	Source	
Outcome	salivary cortisol and immunoglobulin A, urinary 8-hydroxydeoxyguanosine	Results		Weight	1
Domain	Signalling question			Response	Comments
Bias arising from the randomization process	1.1 Was the allocation sequence random?			NI	
	1.2 Was the allocation sequence concealed until participants were enrolled and assigned to interventions?			NI	
	1.3 Did baseline differences between intervention groups suggest a problem with the randomization process?			PN	
	Risk of bias judgement			Some concerns	
Bias due to deviations from intended interventions	2.1. Were participants aware of their assigned intervention during the trial?			N	
	2.2. Were carers and people delivering the interventions aware of participants' assigned intervention during the trial?			N	
	2.3. If Y/PY/NI to 2.1 or 2.2: Were there deviations from the intended intervention that arose because of the experimental context?			NA	

	2.4 If Y/PY to 2.3: Were these deviations likely to have affected the outcome?	NA	
	2.5. If Y/PY/NI to 2.4: Were these deviations from intended intervention balanced between groups?	NA	
	2.6 Was an appropriate analysis used to estimate the effect of assignment to intervention?	NI	
	2.7 If N/PN/NI to 2.6: Was there potential for a substantial impact (on the result) of the failure to analyse participants in the group to which they were randomized?	NI	
	Risk of bias judgement	High	No flow diagram
Bias due to missing outcome data	3.1 Were data for this outcome available for all, or nearly all, participants randomized?	NI	
	3.2 If N/PN/NI to 3.1: Is there evidence that result was not biased by missing outcome data?	PN	
	3.3 If N/PN to 3.2: Could missingness in the outcome depend on its true value?	NI	
	3.4 If Y/PY/NI to 3.3: Is it likely that missingness in the outcome depended on its true value?	NI	
	Risk of bias judgement	High	
Bias in measurement of the outcome	4.1 Was the method of measuring the outcome inappropriate?	N	
	4.2 Could measurement or ascertainment of the outcome have differed between intervention groups?	N	
	4.3 Were outcome assessors aware of the intervention received by study participants?	N	
	4.4 If Y/PY/NI to 4.3: Could assessment of the outcome have been influenced by knowledge of intervention received?	NA	
	4.5 If Y/PY/NI to 4.4: Is it likely that assessment of the outcome was influenced by knowledge of intervention received?	NA	
	Risk of bias judgement	Low	
Bias in selection of the reported result	5.1 Were the data that produced this result analysed in accordance with a pre-specified analysis plan that was finalized before unblinded outcome data were available for analysis?	NI	
	5.2 ... multiple eligible outcome measurements (e.g. scales, definitions, time points) within the outcome domain?	NI	
	5.3 ... multiple eligible analyses of the data?	NI	
	Risk of bias judgement	Some concerns	

Overall bias	Risk of bias judgement			High	
Unique ID	M04	Study ID	Marcu04	Assessor	
Ref or Label	Marcus (2004)	Aim	assignment to intervention (the 'intention-to-treat' effect)		
Experimental	probiotic	Comparator	placebo	Source	
Outcome	serum cortisol	Results		Weight	1
Domain	Signalling question			Response	Comments
Bias arising from the randomization process	1.1 Was the allocation sequence random?			NI	
	1.2 Was the allocation sequence concealed until participants were enrolled and assigned to interventions?			NI	
	1.3 Did baseline differences between intervention groups suggest a problem with the randomization process?			N	
	Risk of bias judgement			Some concerns	
Bias due to deviations from intended interventions	2.1. Were participants aware of their assigned intervention during the trial?			PY	Study not described as blind/double blind
	2.2. Were carers and people delivering the interventions aware of participants' assigned intervention during the trial?			PY	
	2.3. If Y/PY/NI to 2.1 or 2.2: Were there deviations from the intended intervention that arose because of the experimental context?			N	
	2.4 If Y/PY to 2.3: Were these deviations likely to have affected the outcome?			NA	
	2.5. If Y/PY/NI to 2.4: Were these deviations from intended intervention balanced between groups?			NA	
	2.6 Was an appropriate analysis used to estimate the effect of assignment to intervention?			NI	
	2.7 If N/PN/NI to 2.6: Was there potential for a substantial impact (on the result) of the failure to analyse participants in the group to which they were randomized?			NI	
	Risk of bias judgement			High	

Bias due to missing outcome data	3.1 Were data for this outcome available for all, or nearly all, participants randomized?			N	
	3.2 If N/PN/NI to 3.1: Is there evidence that result was not biased by missing outcome data?			N	
	3.3 If N/PN to 3.2: Could missingness in the outcome depend on its true value?			PN	
	3.4 If Y/PY/NI to 3.3: Is it likely that missingness in the outcome depended on its true value?			NA	
	Risk of bias judgement			Low	
Bias in measurement of the outcome	4.1 Was the method of measuring the outcome inappropriate?			N	
	4.2 Could measurement or ascertainment of the outcome have differed between intervention groups?			N	
	4.3 Were outcome assessors aware of the intervention received by study participants?			PY	
	4.4 If Y/PY/NI to 4.3: Could assessment of the outcome have been influenced by knowledge of intervention received?			PY	
	4.5 If Y/PY/NI to 4.4: Is it likely that assessment of the outcome was influenced by knowledge of intervention received?			PN	
	Risk of bias judgement			Some concerns	
Bias in selection of the reported result	5.1 Were the data that produced this result analysed in accordance with a pre-specified analysis plan that was finalized before unblinded outcome data were available for analysis?			NI	
	5.2 ... multiple eligible outcome measurements (e.g. scales, definitions, time points) within the outcome domain?			NI	
	5.3 ... multiple eligible analyses of the data?			NI	
	Risk of bias judgement			Some concerns	
Overall bias	Risk of bias judgement			High	
Unique ID	S14	Study ID	Sch14	Assessor	
Ref or Label	Schmidt (2014)	Aim	assignment to intervention (the 'intention-to-treat' effect)		

Experimental	prebiotic	Comparator	placebo	Source	Non-commercial trial registry record (e.g. ClinicalTrials.gov record)
Outcome	PSS-10, salivary cortisol	Results		Weight	1
Domain	Signalling question			Response	Comments
Bias arising from the randomization process	1.1 Was the allocation sequence random?			NI	
	1.2 Was the allocation sequence concealed until participants were enrolled and assigned to interventions?			NI	
	1.3 Did baseline differences between intervention groups suggest a problem with the randomization process?			N	
	Risk of bias judgement			Some concerns	
Bias due to deviations from intended interventions	2.1. Were participants aware of their assigned intervention during the trial?			N	
	2.2. Were carers and people delivering the interventions aware of participants' assigned intervention during the trial?			N	
	2.3. If Y/PY/NI to 2.1 or 2.2: Were there deviations from the intended intervention that arose because of the experimental context?			NA	
	2.4 If Y/PY to 2.3: Were these deviations likely to have affected the outcome?			NA	
	2.5. If Y/PY/NI to 2.4: Were these deviations from intended intervention balanced between groups?			NA	
	2.6 Was an appropriate analysis used to estimate the effect of assignment to intervention?			N	
	2.7 If N/PN/NI to 2.6: Was there potential for a substantial impact (on the result) of the failure to analyse participants in the group to which they were randomized?			N	
	Risk of bias judgement			Some concerns	
Bias due to missing outcome data	3.1 Were data for this outcome available for all, or nearly all, participants randomized?			N	
	3.2 If N/PN/NI to 3.1: Is there evidence that result was not biased by missing outcome data?			N	
	3.3 If N/PN to 3.2: Could missingness in the outcome depend on its true value?			NI	
	3.4 If Y/PY/NI to 3.3: Is it likely that missingness in the outcome depended on its true value?			PN	
	Risk of bias judgement			Some concerns	

Bias in measurement of the outcome	4.1 Was the method of measuring the outcome inappropriate?			N	
	4.2 Could measurement or ascertainment of the outcome have differed between intervention groups?			N	
	4.3 Were outcome assessors aware of the intervention received by study participants?			N	
	4.4 If Y/PY/NI to 4.3: Could assessment of the outcome have been influenced by knowledge of intervention received?			NA	
	4.5 If Y/PY/NI to 4.4: Is it likely that assessment of the outcome was influenced by knowledge of intervention received?			NA	
	Risk of bias judgement			Low	
Bias in selection of the reported result	5.1 Were the data that produced this result analysed in accordance with a pre-specified analysis plan that was finalized before unblinded outcome data were available for analysis?			NI	
	5.2 ... multiple eligible outcome measurements (e.g. scales, definitions, time points) within the outcome domain?			NI	
	5.3 ... multiple eligible analyses of the data?			NI	
	Risk of bias judgement			Some concerns	
Overall bias	Risk of bias judgement				
Unique ID	K16	Study ID	Kat16	Assessor	
Ref or Label	Kato-Kataoka (2016)	Aim	assignment to intervention (the 'intention-to-treat' effect)		
Experimental	probiotic	Comparator	placebo	Source	Company-owned trial registry record (e.g. GSK Clinical Study Register record)
Outcome	salivary cortisol and alpha amylase, visual analogue stress scale	Results		Weight	1
Domain	Signalling question			Response	Comments

Bias arising from the randomization process	1.1 Was the allocation sequence random?	PN	
	1.2 Was the allocation sequence concealed until participants were enrolled and assigned to interventions?	NI	
	1.3 Did baseline differences between intervention groups suggest a problem with the randomization process?	N	
	Risk of bias judgement	Some concerns	
Bias due to deviations from intended interventions	2.1. Were participants aware of their assigned intervention during the trial?	N	
	2.2. Were carers and people delivering the interventions aware of participants' assigned intervention during the trial?	N	
	2.3. If Y/PY/NI to 2.1 or 2.2: Were there deviations from the intended intervention that arose because of the experimental context?	NA	
	2.4 If Y/PY to 2.3: Were these deviations likely to have affected the outcome?	NA	
	2.5. If Y/PY/NI to 2.4: Were these deviations from intended intervention balanced between groups?	NA	
	2.6 Was an appropriate analysis used to estimate the effect of assignment to intervention?	Y	
	2.7 If N/PN/NI to 2.6: Was there potential for a substantial impact (on the result) of the failure to analyse participants in the group to which they were randomized?	NA	
	Risk of bias judgement	Low	
Bias due to missing outcome data	3.1 Were data for this outcome available for all, or nearly all, participants randomized?	Y	
	3.2 If N/PN/NI to 3.1: Is there evidence that result was not biased by missing outcome data?	NA	
	3.3 If N/PN to 3.2: Could missingness in the outcome depend on its true value?	NA	
	3.4 If Y/PY/NI to 3.3: Is it likely that missingness in the outcome depended on its true value?	NA	
	Risk of bias judgement	Low	
Bias in measurement of the outcome	4.1 Was the method of measuring the outcome inappropriate?	N	
	4.2 Could measurement or ascertainment of the outcome have differed between intervention groups?	N	
	4.3 Were outcome assessors aware of the intervention received by study participants?	N	

	4.4 If Y/PY/NI to 4.3: Could assessment of the outcome have been influenced by knowledge of intervention received?	NA	
	4.5 If Y/PY/NI to 4.4: Is it likely that assessment of the outcome was influenced by knowledge of intervention received?	NA	
	Risk of bias judgement	Low	
Bias in selection of the reported result	5.1 Were the data that produced this result analysed in accordance with a pre-specified analysis plan that was finalized before unblinded outcome data were available for analysis?	NI	
	5.2 ... multiple eligible outcome measurements (e.g. scales, definitions, time points) within the outcome domain?	NI	
	5.3 ... multiple eligible analyses of the data?	NI	
	Risk of bias judgement	Some concerns	
Overall bias	Risk of bias judgement	Some concerns	
Unique ID	K16b	Study ID	Kat16b
Ref or Label	Kato-Kataoka (2016)	Aim	assignment to intervention (the 'intention-to-treat' effect)
Experimental	probiotic	Comparator	placebo
Outcome	salivary cortisol and immunoglobulin A	Results	
		Weight	1
Domain	Signalling question		Response
Bias arising from the randomization process	1.1 Was the allocation sequence random?	N	Based on background data
	1.2 Was the allocation sequence concealed until participants were enrolled and assigned to interventions?	NI	
	1.3 Did baseline differences between intervention groups suggest a problem with the randomization process?	N	
	Risk of bias judgement	Some concerns	

Bias due to deviations from intended interventions	2.1. Were participants aware of their assigned intervention during the trial?	N	
	2.2. Were carers and people delivering the interventions aware of participants' assigned intervention during the trial?	N	
	2.3. If Y/PY/NI to 2.1 or 2.2: Were there deviations from the intended intervention that arose because of the experimental context?	NA	
	2.4 If Y/PY to 2.3: Were these deviations likely to have affected the outcome?	NA	
	2.5. If Y/PY/NI to 2.4: Were these deviations from intended intervention balanced between groups?	NA	
	2.6 Was an appropriate analysis used to estimate the effect of assignment to intervention?	Y	
	2.7 If N/PN/NI to 2.6: Was there potential for a substantial impact (on the result) of the failure to analyse participants in the group to which they were randomized?	NA	
	Risk of bias judgement	Low	
Bias due to missing outcome data	3.1 Were data for this outcome available for all, or nearly all, participants randomized?	N	
	3.2 If N/PN/NI to 3.1: Is there evidence that result was not biased by missing outcome data?	N	
	3.3 If N/PN to 3.2: Could missingness in the outcome depend on its true value?	N	
	3.4 If Y/PY/NI to 3.3: Is it likely that missingness in the outcome depended on its true value?	NA	
	Risk of bias judgement	Low	
Bias in measurement of the outcome	4.1 Was the method of measuring the outcome inappropriate?	N	
	4.2 Could measurement or ascertainment of the outcome have differed between intervention groups?	N	
	4.3 Were outcome assessors aware of the intervention received by study participants?	N	
	4.4 If Y/PY/NI to 4.3: Could assessment of the outcome have been influenced by knowledge of intervention received?	NA	
	4.5 If Y/PY/NI to 4.4: Is it likely that assessment of the outcome was influenced by knowledge of intervention received?	NA	
	Risk of bias judgement	Low	
Bias in selection of the	5.1 Were the data that produced this result analysed in accordance with a pre-specified analysis plan that was finalized before unblinded outcome data were available for analysis?	NI	

reported result	5.2 ... multiple eligible outcome measurements (e.g. scales, definitions, time points) within the outcome domain?	NI	
	5.3 ... multiple eligible analyses of the data?	NI	
	Risk of bias judgement	Some concerns	
Overall bias	Risk of bias judgement	Some concerns	