

SARS-CoV-2 antibody testing in a UK population: detectable IgG for up to 20 weeks post infection.

Authors: Louise J. Robertson¹, Julie S. Moore¹, Kevin Blighe¹, Kok Yew Ng², Nigel Quinn³, Fergal Jennings³, Gary Warnock⁴, Peter Sharpe³, Mark Clarke⁵, Kathryn Maguire⁵, Sharon Rainey⁵, Ruth Price¹, William Burns², Amanda Kowalczyk¹, Agnes Awuah¹, Sara McNamee², Gayle Wallace⁶, Steve Segar¹, Connie Chao Shern⁷, M. M. Andrew Nesbit¹, James McLaughlin^{2*}, Tara Moore^{1&7*}.

¹Biomedical Sciences Research Institute, Ulster University, Northern Ireland

²Nanotechnology and Integrated Bioengineering Centre, Ulster University, Northern Ireland

³Clinical Biochemistry Laboratory, Southern Health and Social Care Trust, Northern Ireland

⁴Microbiology Laboratory, Southern Health and Social Care Trust, Northern Ireland

⁵Northern Ireland Blood Transfusion Service, Belfast City Hospital, Northern Ireland

⁶Department of Anaesthesia, Royal Victoria Hospital, Belfast Health and Social Care Trust, Northern Ireland.

⁷Avellino, 1505 Adams Dr, Menlo Park, CA 94025, United States

*Joint corresponding authors- Professor Tara Moore tara.moore@ulster.ac.uk
Professor James McLaughlin jad.mclaughlin@ulster.ac.uk

Abstract

Background

The SARS-CoV-2 pandemic necessitated rapid and global responses across all areas of healthcare, including an unprecedented interest in serological immunoassays to detect antibodies to the virus. The dynamics of the immune response to SARS-CoV-2 is still not well understood.

Methods

We measure SARS-CoV-2 antibody levels in plasma samples from 880 people in Northern Ireland by Roche Elecsys Anti-SARS-CoV-2 IgG/IgA/IgM, Abbott SARS-CoV-2 IgG and EuroImmune IgG SARS-CoV-2 ELISA immunoassays to analyse immune dynamics over time. Using these results, we develop a 'pseudo gold standard' reference cohort against which to assess immunoassay performance. We report performance metrics for the UK-RTG-ABC-19 rapid lateral flow immunoassay (LFIA).

against a characterised panel of 304 positives established using the ‘pseudo gold standard’ system and 350 negative samples.

Results

We detect persistence of SARS-CoV-2 IgG up to 140 days (20 weeks) post infection, across all three antibody immunoassays, at levels up to 4.4 times the cut-off for a positive result by Roche measurement. Using our ‘pseudo gold standard’ cohort (n=348 positive, n=510 negative) we determine the sensitivity and specificity of the three commercial immunoassays used (EuroImmun; Sens. 98.9% [97.7-99.7%]; Spec. 99.2% [98.4-99.8%]; Roche; Sens. 99.4% [98.6-100%]; Spec. (96.7% [95.1-98.2%]; Abbott; Sens. 86.8% [83.1-90.2%]; Spec. (99.2% [98.4-99.8%]). The UK-RTC AbC-19 lateral flow immunoassay using shows a sensitivity of 97.70% (95.72%-99.34%) and specificity of 100% (100.00-100.00%).

Conclusions

Through comprehensive analysis of a large cohort of pre-pandemic and pandemic individuals, we show detectable levels of IgG antibodies, lasting up to 140 days, providing insight to immunity levels at later time points. We propose an alternative to RT-PCR positive status as a standard for assessing SARS-CoV-2 antibody assays and show strong performance metrics for the AbC-19 rapid test.

Introduction

The World Health Organization declared a pandemic in March 2020 due to severe acute respiratory syndrome coronavirus-2 (SARS-CoV-2), identified late 2019 in Wuhan, China, causing COVID-19 disease^{1,2}.

A global race ensued to develop diagnostic assays, with the most common being viral

RNA detection (RT-qPCR assays), to detect acute infection³. RT-qPCR assays are labour and reagent intensive, limited by a short temporal window for positive diagnosis, and exhibit potential for false negative results⁴. Evidence suggests sensitivity of RT-qPCR can be as low as 70%⁵. Lockdown measures and “flattening the curve” strategies meant many infected individuals were instructed to self-isolate and were not offered a diagnostic RT-qPCR, with much of the testing limited to patients admitted to hospital, who perhaps reflect a more severely infected cohort. Consequently, a potentially large number of cases were unconfirmed or undetected⁶.

The ability to accurately detect SARS-CoV-2 specific antibodies, which develop after an immune response is evoked, is vital for building biobanks of convalescent sera for treatment, monitoring immune response to infection and assessing responses to vaccination programmes. Knowledge of antibody levels, indicative of prior virus exposure, will play an important role in public health policy and understanding SARS-CoV-2 epidemiology, including determining seroprevalence. Knowledge of the timing for when antibody levels can be measured is essential to allow accurate reporting.

Commercial serology immunoassays are mostly laboratory-based and measure IgG antibody levels in plasma or serum. Alternatively, lateral flow immunoassays (LFIAs), require a finger prick blood sample and can be used at point-of-care (POC) or in the home; particularly important in the context of lockdown enforcement during the pandemic. Currently, a limited number of laboratory-based chemiluminescence immunoassays are approved for use in the UK including the Roche Elecsys Anti-SARS-CoV-2 IgG/IgA/IgM against the SARS-CoV-2 Nucleocapsid antigenic region (Roche Diagnostics, Basel, Switzerland) and the Abbott SARS-CoV-2 IgG assay against the same antigenic region (Abbott Diagnostics, Abbott Park, IL, USA).

The complexities of the humoral immune response to SARS-CoV-2 is a much-debated topic. The 'sero-silent', those who do not make IgG, may remain asymptomatic or conversely may become particularly unwell and unfortunately die⁷. Others produce IgG against different antigenic regions of the virus such as the spike or nucleocapsid protein. Patients who remain asymptomatic may mount a humoral immune response which is short-lived, with detectable levels of antibody falling after 2 months⁸. This, alongside potentially low sensitivity and lack of RT-PCR test availability across the UK has hindered development of well characterised serology samples known to contain IgG antibodies to SARS-CoV-2.

Herein, we describe use of Roche and Abbott commercial immunoassays, as well as the EuroImmun Anti-SARS-CoV-2 ELISA-IgG against the S1 domain of the spike antigenic protein of SARS-CoV-2 (EuroImmun UK, London, UK) to characterise a large number (880) of pre-pandemic and pandemic COVID-19 blood samples from within Northern Ireland and report on longevity of IgG antibodies detected. Presently, there is no gold standard assay for comparison. Therefore, we describe a 'pseudo gold-standard' against which to evaluate assays. Furthermore, we present results of an independent validation of the UK-RTC AbC-19 POC LFIA against a cohort of 304 known positives according to this 'pseudo gold-standard' system and 350 known negative samples for IgG to SARS-CoV-2.

Methods

Study Design

This study was approved by Ulster University Institutional Ethics committee (REC/20/0043), South Birmingham REC (The PANDEMIC Study IRAS Project

ID: 286041Ref 20/WM/0184) and adhered to the Declaration of Helsinki and Good Clinical Practice.

Participant samples

The flow of participant samples is summarised in Figure S1. All participants provided informed consent with no adverse events. An online recruitment strategy was employed, with the study advertised through internal Ulster University email, website and social media. A BBC Newsline feature providing the pandemic study email address also prompted interest from the general population.

The first 800 respondents who expressed interest were provided with an online patient information sheet, consent form and health questionnaire and invited to register to attend a clinic. Exclusion criteria related to blood disorder or contraindication to giving a blood sample. To enrich the cohort for positive samples, further participants were invited if they had previously tested PCR positive or had the distinctive symptom of loss of taste and smell. Blood sampling clinics were held at locations around Northern Ireland between April and July 2020 resulting in collection of 263 10ml EDTA plasma samples from 263 separate study participants. A small cohort (n=19) of anonymised plasma samples were obtained from Avellino, USA. Additional anonymised plasma samples were obtained from Southern Health and Social Care Trust (SHSCT) Biochemistry Laboratory (n=195), and Northern Ireland Blood Transfusion Service (NIBTS, n=184) through convalescent plasma programs.

Pre-pandemic samples (prior to June 2019, n=136) were obtained from Ulster University ethics committee approved studies with ongoing consent and from NIBTS

(n= 200, more than 3 years old). Plasma samples were used at no more than 3 freeze-thaw cycles for all analyses reported within this manuscript.

Clinical information

Basic demographic information and data about positive RT-PCR result and time from symptom onset was provided by PANDEMIC study participants through the secure online questionnaire. Anonymised participant samples from USA, SHSCT and NIBTS were provided with age, gender and time since PCR-positive, where a previous test had been carried out.

Laboratory-based immunoassays

Details of laboratory immunoassays are summarised in supplementary methods and Table S1.

UK-RTC AbC-19 LFIA

UK-RTC AbC-19 POC LFIA testing was conducted at Ulster University according to manufacturer's instructions (details in Table S1). Assays were performed as cohorts, with samples in batches of 10, with one researcher adding 2.5µL of plasma to the assay and a second adding 100µL of buffer immediately following sample addition. After 20 minutes, the strength of each resulting test line was scored from 0-10 according to a visual score card (scored by 3 researchers; Figure S2). A score ≥ 1 is positive. Details of samples for analytical specificity and sensitivity analysis are available in Supplementary methods.

Statistical analysis

As per Daniel WW⁹ a minimum sample size based on prevalence can be calculated using the following formula: $n = \frac{Z^2 P(1-P)}{d^2}$, where n = sample size, Z = Z statistic for a chosen level of confidence, P = estimated prevalence, and d = precision. Assuming a prevalence of SARS-CoV-2 of 10% and a precision of 5%, we estimate that the required sample size at 99% confidence (Z = 2.58) to be 240 individuals. If the true prevalence is lower, 5%, the estimated required sample size given a precision of 2.5% is 506 individuals. A minimum sample size of 200 known positives and 200 known negatives was required for validation as per MHRA guidelines for SARS-CoV-2 LFIA antibody immunoassays¹⁰.

Statistical analysis was conducted in R v 4.0.2¹¹. To assess discordance between test results, data was first filtered to include individuals with an Abbott test result in the range ≥ 0.25 & ≤ 1.4 , with a 2 x 2 contingency table produced that comprised all possible combinations of [concordant|discordant] test results [within|outside of] this range. A p-value was derived via a Pearson χ^2 test after 2000 p-value simulations via the stats package.

To define a gold-standard, a positive result was determined as any individual who was positive by 2 out of 3 immunoassays, while negative was defined as negative by 2 out of 3 immunoassays. EuroImmun Borderline results were excluded. Sensitivity, specificity, and accuracy were then derived via the pROC package, with 95% confidence intervals produced after 2000 bootstraps. ROC analysis was performed via the pROC package. To compare test result (Positive|Negative) to age, a binary logistic regression model was produced with test result as outcome – a p-value was then derived via χ^2 ANOVA. To compare time against test result (encoded continuously), a linear regression was performed. We calculated median per time-

period and then converted these to log [base 2] ratios against the positivity cut-off for each assay. All plots were generated via ggplot2 or custom functions using base R¹².

Results

Antibody levels in plasma from 880 individuals were assessed using the three SARS-CoV-2 immunoassays; EuroImmun IgG, Roche Elecsys IgG/IgM/IgA and Abbott Architect IgG (Table S1). This included a negative cohort of 223 pre-pandemic plasma samples collected and stored during 2017 to end of May 2019 to determine assay specificity. Of the 657 participants whose samples were collected post-pandemic, 265 (40.33%) previously tested RT-PCR positive with a range of 7-173 days since diagnosis. A total of 225 participants gave time since self-reported COVID-19 symptoms, with a range of 5-233 days from symptom onset, whilst 198 had no symptom or PCR data available.

Laboratory based antibody immunoassays

A positive result for antibody on one or more of the three laboratory immunoassays was recorded for 385/657 (58.6%) post-pandemic participants. By EuroImmun ELISA, 346 were positive, 20 borderline and 291 were negative. The Roche assay detected 380 positive and 277 negative, whilst Abbott determined 310 positive and 347 negative (Table S2). The median age across all age groups combined was lower for participants testing positive across each of the immunoassays (median [sd] for positive versus negative, respectively: EuroImmun, 41 [13.16] vs 48 [12.95]; Roche, 42 [13.08] vs 48 [13.00]; Abbott, 41 [13.18] vs 47 [13.09]). (Figure S3, $p < 0.0001$). When segregated by age group, however, differences were less apparent in certain groups (Figure S4). Excluding the pre-pandemic cohort, this gap reduced but remained statistically

significant EuroImmun, 41 [13.18] vs 45 [12.49]; Roche, 42 [13.15] vs 45 [12.49]; Abbott, 41 [13.26] vs 44 [12.63]) ($p < 0.01$) (median [sd] for positive versus negative). Of note, out of 265 individuals with a previous positive RT-PCR result, 14 (5.2%) did not show any detectable antibodies by all three immunoassays, with no association with age, gender or time between test and blood draw (data not shown).

The three commercial laboratory immunoassays provide a ratio value that increases with IgG antibody titre. When correlation between these values is assessed, good overall agreement is observed between the three immunoassays (Figure 1, Figure S5). As highlighted by Rosadas *et al.*, we also see significant disagreement in the Abbott 0.25-1.4 range when compared to EuroImmun and Roche (Figure 1a,b; chi-square p-values: EuroImmun vs Abbott, $p < 0.001$; Roche vs Abbott, $p < 0.001$)¹³.

Duration of humoral response to SARS-CoV-2

We found IgG antibodies could still be detected in individuals (excluding pre-pandemic) across all three immunoassays used up to week 20 (day 140) (Figure 2). We note a statistically significant decrease in signal with respect to time across each assay (p-value [slope]): EuroImmun, $p = 0.036$ [-0.785]; Roche, $p = 0.002$ [-0.125]; Abbot, $p < 0.0001$ [-3.585]. These remained statistically significant after adjustment for age. Antibody levels (expressed as a ratio of median result per timepoint divided by positivity cut off; Figure 2d) peaked at Week 1-2 for EuroImmun (1.33) and Abbott (1.64), though reached highest levels at Week 8-12 when measured by Roche (5.45). By week 21-24, median score for all tests had dropped below the positivity cut off, though a small number of RT-PCR positive samples remained above the positive cut off at these later timepoints (Figure 2).

Developing a 'pseudo gold-standard'

Use of a previous positive RT-PCR for SARS-CoV-2 viral RNA as a gold standard for the presence of IgG has limitations, therefore we developed a 'pseudo gold-standard' based on laboratory immunoassay antibody results, in which a positive result by two or more immunoassays classes a sample as antibody positive (n=348), whilst a negative result on two or more immunoassays classes a sample as negative (n=510). EuroImmun borderline results were excluded from this analysis (n=22). When assessed against the *pseudo-gold standard*, EuroImmun performed with highest accuracy (Sens. 98.9% [97.7-99.7%]; Spec. 99.2% [98.4-99.8%]; Acc. 99.1% [98.4-99.7%]). Roche showed highest sensitivity and high accuracy (Sens. 99.4% [98.6-100%]; Spec. 96.7% [95.1-98.2%]; Acc. 97.8% [96.7-98.7%]), whilst Abbott performed poorly on sensitivity but had the highest specificity (Sens. 86.8% [83.1-90.2%]; Spec. 99.2% [98.4-99.8%]; Acc. 94.2% [92.7-95.7%]).

Area under the curve indicates best performance by EuroImmun 0.99 (0.984; 0.997), followed by Roche 0.98 (0.972; 0.989), then Abbott 0.93 (0.912; 0.948) (Figure 3).

UK-RTC AbC-19

Using the commercial immunoassays described we established a well characterised serology sample set of 'known positive' and 'known negative' for IgG antibodies to SARS-CoV-2 to evaluate performance metrics for the UK-RTC AbC-19 Rapid POC LFIA.

This LFIA detects IgG antibodies against the spike protein antigen, so we therefore required all samples to be positive by the EuroImmun SARS-CoV-2 IgG ELISA, which likewise detects antibodies against the S1 domain¹⁴. In line with our 'pseudo gold standard' system, samples were also required to be positive by a second

immunoassay (Roche or Abbott). To analyse specificity, we assessed 350 plasma samples from participants classed as 'known negative' on the AbC-19 LFIA. All samples were from individuals confirmed to be negative across all three laboratory assays (Roche, EuroImmun, Abbott). Using these positive n= 304 and negative n=350 antibody cohorts, we determined a sensitivity of 97.70% (95.72%-99.34%) and specificity of 100% (100.00-100.00%) for the AbC-19 LFIA (Table 1).

When used as intended in POC settings, the AbC-19 LFIA provides binary positive/negative results. However, when assessing LFIA in the laboratory, each test line was scored against the scorecard by three independent researchers (0 negative, 1-10 positive; Figure S2). Compared to quantitative outputs from the Abbott, EuroImmun and Roche assays, the AbC-19 LFIA shows strong correlation (Abbott $r=0.86$ [$p<0.001$]; EuroImmun $r=0.88$ [$p,0.001$]; Roche $r=0.83$ [$p<0.001$]; Figure 4, Figure S5).

Analytical specificity and sensitivity of AbC-19 test

We observed no cross-reactivity across samples with known H5N1 influenza, Respiratory syncytial virus, Influenza A, Influenza B, Bordetella Pertussis, Haemophilus Influenzae, Seasonal coronavirus NL63 and 229E on the AbC-19 LFIA. (n=34 samples, n=8 distinct respiratory viruses; Table S3). Against a panel of external reference SARS-CoV-2 serology sample, the AbC-19 LFIA detected antibodies with scores commensurate to the EuroImmun ELISA scores (Figure S6, Table S4).

Discussion

Serological antibody immunoassays are an important tool in helping combat the SARS-CoV-2 pandemic. One difficulty faced in validation of antibody diagnostic assays has been access to samples with known SARS-CoV-2 antibody status. As previously described, there is no clear gold standard for reference against which to assess SARS-CoV-2 immunoassays. A positive RT-PCR test has been used previously as a reference standard, although limited by a high rate of false negatives, failure in some cases to develop IgG antibodies (sero-silence or lack of antibody against the same antigenic component of the virus as the immunoassay uses as a capture antigen), or the lack of RT-PCR testing availability early in the pandemic^{3,5,15}. Self-assessment of symptoms for COVID-19 disease is a poor indicator of previous infection, even among healthcare workers¹⁶. Asymptomatic individuals may be unaware of infection and others may harbour pre-existing immunity or elucidate a T cell response.

Our results show strong correlation between all three immunoassays, with shortcomings in the Abbott system output 0.25-1.4 range, as described previously, suggesting an overestimated positive cut-off (Figure 1)¹³. Our detection of antibodies 140 days after RT PCR positive status (20 weeks, and beyond in a small number of samples) indicates persistence IgG antibodies to both the spike protein and nucleocapsid protein, despite typical patterns of antibody decay after acute viral antigenic exposure being rapid¹⁷. Where others have reported SARS-CoV-2 antibodies decline at 90 days, we also noted a statistically significant decline over time but levels remain detectable at 140 days (Figure 2). We note that IgG levels reach their peak as late as Week 8-12 (Roche ratio 5.45 times threshold cut-off)¹⁸, though this may be an artefact of lower number of participants at earlier timepoints

(Figure 2d). Longitudinal studies on SARS-CoV convalescent patients suggests that detectable IgG can still be present as long as 2 years after infection²⁰. Further studies are needed on large cohorts with sequential antibody immunoassays performed on symptomatic and non-symptomatic individuals as well as those with mild and severe COVID-19. This is vital to inform vaccine durability, so-called ‘immune passports’ and in the definition of a protective threshold for anti-SARS-CoV-2 antibodies. This broader detection window supports the use of these immunoassays for seroprevalence screening¹⁹.

To assess sensitivity and specificity, we developed a ‘pseudo gold-standard’ against which to analyse assays, which does not rely on a single test as reference. A similar approach was used in a recent seroprevalence study in Iceland, whereby two positive antibody results were required to determine a participant positive¹⁵. The sensitivity and specificity we observed for these laboratory immunoassays did not differ greatly from Public Health England evaluations, though EuroImmun performed with higher sensitivity (98.9%) than the reported 72% and Abbott with lower (86.8%) than the reported 92.7%²¹⁻²³.

Our evaluation of performance metrics for the rapid POC finger-prick AbC-19 LFIA gave 97.7% sensitivity and 100% specificity. Strong correlation was observed in quantitative score between results on all immunoassays with the highest observed between EuroImmun and AbC-19 LFIA (Figure S5). This is to be expected, given both the AbC-19 LFIA and EuroImmun ELISA detect antibodies against spike protein. For the assessment of immunity to prior natural infection as well as to immunisation, it is important to note IgG antibodies against SARS-CoV-2 spike protein detected by

laboratory-based EuroImmune ELISA and AbC-19 POC LFIA are known to correlate with neutralizing antibodies, which may confer future immunity^{24,25}.

The 'pseudo gold-standard' system may artificially raise the threshold for positive sample inclusion, by requiring a positive result by two immunoassays. However, similar issues have been raised when using previous RT-PCR result or definitive COVID-19 symptoms as inclusion criteria given these will likely skew a cohort towards more severe disease, which may increase immune response⁵. In the absence of a clear gold standard test, our 'pseudo-gold standard' system relies on no single test and instead takes an average of three. We observed a high number of positive participants in our cohorts (n=348; 40.9%), a reflection of biases in the recruitment methods, enriching for positive samples.

The validation of the AbC-19 LFIA reported excellent performance metrics and we note it uses plasma from venous blood samples, as opposed to the use of a finger prick blood sample. A matrix study comparing the result from finger prick blood versus plasma is under investigation by this PANDEMIC Study team @Ulster University. When this LFIA was used on our cohort, a number of the positive results scored low, 1/10 (using the score card under laboratory conditions) with a faint test band, visible to a trained laboratory scientist but perhaps difficult to identify as positive by the general public conducting a self-test (Figure S6). This faint line may be reflective of the longer time from infection. If this AbC-19 LFIA is to be rolled out as a home-testing kit, it is important to determine if members of the public observe the same results as observed in the laboratory. Again, this is the aim of an ongoing usability study by the PANDEMIC study team @Ulster University.

Lastly, it is important to consider prevalence when interpreting an assays' sensitivity and specificity as in a low prevalence scenario, as even slightly lowered performance metrics (such as the MHRA required 98%) can result in large numbers of false negative and false positive results^{10,26}. Given the high sensitivity of the AbC-19 LFIA observed in this study, a false positive result is unlikely, however false negatives may occur. For prevalence studies, this may underestimate true prevalence (though could be corrected statistically). At an individual level, a false negative result may cause anxiety or over-caution- particularly if we progress through this pandemic and become more informed about SARS-CoV-2 immunity. A positive antibody test may be linked to prevention of future infection following COVID-19 illness or post-vaccination.

Acknowledgements: We are extremely grateful to all the people of Northern Ireland who took part in this study and gave blood during the pandemic. We are indebted to the phlebotomists- Geraldine Horrigan, David Hunter and Pamela Taylor who conducted all the blood draws whilst ensuring the highest possible level of safety to the participants. We are also extremely grateful to Kingsbridge Private Hospital for sponsorship and providing everything needed for blood collection including the clinical space. We acknowledge Dr Tony Byrne for use of the SafeWater laboratory and Professor Gareth Davison for laboratory space and equipment during the pandemic within a locked down University.

Declaration of interests:

At the time of this study TM and JML acted as advisors to CIGA HealthCare, an industrial partner in the UK Rapid Test Consortium. No personal financial reward or

renumeration was received for this advisory role. At the time of submission of this manuscript TM and JML no longer held these advisory positions.

All other authors have no potential conflict of interest to report.

Funding statement:

Funding for this study was obtained from UK-RTC to cover all laboratory costs incurred.

References

- 1 World Health Organisation. Rolling updates on coronavirus disease (COVID-19). 2020. <https://www.who.int/emergencies/diseases/novel-coronavirus-2019/events-as-they-happen> (accessed Aug 11, 2020).
- 2 Lu R, Zhao X, Li J, *et al.* Genomic characterisation and epidemiology of 2019 novel coronavirus: implications for virus origins and receptor binding. *Lancet* 2020; **395**. DOI:10.1016/S0140-6736(20)30251-8.
- 3 Petherick A. Developing antibody tests for SARS-CoV-2. *Lancet* 2020; **395**: 1101–2.
- 4 Winichakoon P, Chaiwarith R, Liwsrisakun C, *et al.* Negative nasopharyngeal and oropharyngeal swabs do not rule out COVID-19. *J. Clin. Microbiol.* 2020; **58**. DOI:10.1128/JCM.00297-20.
- 5 Watson J, Richter A, Deeks J. Testing for SARS-CoV-2 antibodies. *BMJ* 2020; **370**. DOI:10.1136/bmj.m3325.
- 6 Black JRM, Bailey C, Przewrocka J, Dijkstra KK, Swanton C. COVID-19: the case for health-care worker screening to prevent hospital transmission. *Lancet*

- (London, England) 2020; **395**: 1418–20.
- 7 Buss LF, Prete CA, Abraham CMM, *et al.* COVID-19 herd immunity in the Brazilian Amazon. *medRxiv* 2020; : 2020.09.16.20194787.
 - 8 Long Q-X, Tang X-J, Shi Q-L, *et al.* Clinical and immunological assessment of asymptomatic SARS-CoV-2 infections. *Nat Med* 2020; **26**: 1200–4.
 - 9 Daniel WW. Biostatistics : a foundation for analysis in the health sciences, 7th Editio. New York: John Wiley & Sons, Ltd, 1999.
 - 10 Medicines and Healthcare product Regulatory Agency. Target product profile: antibody tests to help determine if people have immunity to SARS-CoV-2. 2020.
https://assets.publishing.service.gov.uk/government/uploads/system/uploads/attachment_data/file/881162/Target_Product_Profile_antibody_tests_to_help_determine_if_people_have_immunity_to_SARS-CoV-2_Version_2.pdf
(accessed April 24, 2020).
 - 11 The R Development Core Team. R: A language and environment for statistical computing. ISBN 3-900051-07-0. 2017.
 - 12 Wickham H. ggplot2 Elegant Graphics for Data Analysis. 2016
DOI:10.1007/978-0-387-98141-3.
 - 13 Rosadas C, Randell P, Khan M, McClure MO, Tedder RS. Testing for responses to the wrong SARS-CoV-2 antigen? *Lancet (London, England)* 2020; **396**: e23.
 - 14 UK-RTC and Abingdon Health. Charting the course to a post-COVID world. 2020.
 - 15 Gudbjartsson DF, Norddahl GL, Melsted P, *et al.* Humoral Immune Response to SARS-CoV-2 in Iceland. *N Engl J Med* 2020; published online Sept 1.

DOI:10.1056/NEJMoa2026116.

- 16 Mulchandani R, Taylor-Phillips S, Jones H, *et al.* Self assessment overestimates historical COVID-19 disease relative to sensitive serological assays: cross sectional study in UK key workers. *medRxiv* 2020; : 2020.08.19.20178186.
- 17 Andraud M, Lejeune O, Musoro JZ, Ogunjimi B, Beutels P, Hens N. Living on Three Time Scales: The Dynamics of Plasma Cell and Antibody Populations Illustrated for Hepatitis A Virus. *PLoS Comput Biol* 2012; **8**: e1002418.
- 18 Ibarondo FJ, Fulcher JA, Goodman-Meza D, *et al.* Rapid Decay of Anti-SARS-CoV-2 Antibodies in Persons with Mild Covid-19. *N Engl J Med* 2020; **383**: 1085–7.
- 19 Deeks JJ, Dinnes J, Takwoingi Y, *et al.* Antibody tests for identification of current and past infection with SARS-CoV-2. *Cochrane Database Syst Rev* 2020; published online June 25. DOI:10.1002/14651858.CD013652.
- 20 Wu L-P, Wang N-C, Chang Y-H, *et al.* Duration of antibody responses after severe acute respiratory syndrome. *Emerg Infect Dis* 2007; **13**: 1562–4.
- 21 Public Health England. Evaluation of the Abbott SARS-CoV-2 IgG for the detection of anti-SARSCoV-2 antibodies. 2020
https://assets.publishing.service.gov.uk/government/uploads/system/uploads/attachment_data/file/890566/Evaluation_of_Abbott_SARS_CoV_2_IgG_PHE.pdf.
- 22 Public Health England. Evaluation of the Euroimmun Anti-SARS-CoV-2 ELISA (IgG) serology assay for the detection of anti-SARS-CoV-2 antibodies. 2020
https://assets.publishing.service.gov.uk/government/uploads/system/uploads/attachment_data/file/893433/Evaluation_of_Euroimmun_SARS_CoV_2_ELISA_

IgG__1_.pdf.

- 23 Public Health England. Evaluation of Roche Elecsys AntiSARS-CoV-2 serology assay for the detection of anti-SARS-CoV-2 antibodies. 2020.
- 24 Iyer AS, Jones FK, Nodoushania A, *et al.* Dynamics and significance of the antibody response to SARS-CoV-2 infection. *medRxiv* 2020; : 2020.07.18.20155374.
- 25 Addetia A, Crawford KHD, Dingens A, *et al.* Neutralizing antibodies correlate with protection from SARS-CoV-2 in humans during a fishery vessel outbreak with high attack rate. *medRxiv* 2020; : 2020.08.13.20173161.
- 26 SPI-B Scientific Pandemic Influenza Group on Behaviours. SPI-B: Pre-empting possible negative behavioural responses to COVID-19 antibody testing, 13 April 2020. 2020 <https://www.gov.uk/government/publications/spi-b-pre-empting-possible-negative-behavioural-responses-to-covid-19-antibody-testing-13-april-2020>.

Table 1: UK-RTC AbC-19 LFIA performance metrics.

Test	AbC-19
Total Negative	350
True Negative	350
False Positive	0
Total Positive	304
True Positive	297
False Negative	7
Sensitivity % (95 CI)	97.70% (95.72%-99.34%)
Specificity % (95 CI)	100.00% (100.00%-100.00%)
Positive predictive value	100.00%
Negative predictive value	98.04% (96.42%-99.43%)
Accuracy % (95 CI)	98.93% (98.01%-99.69%)

Figures

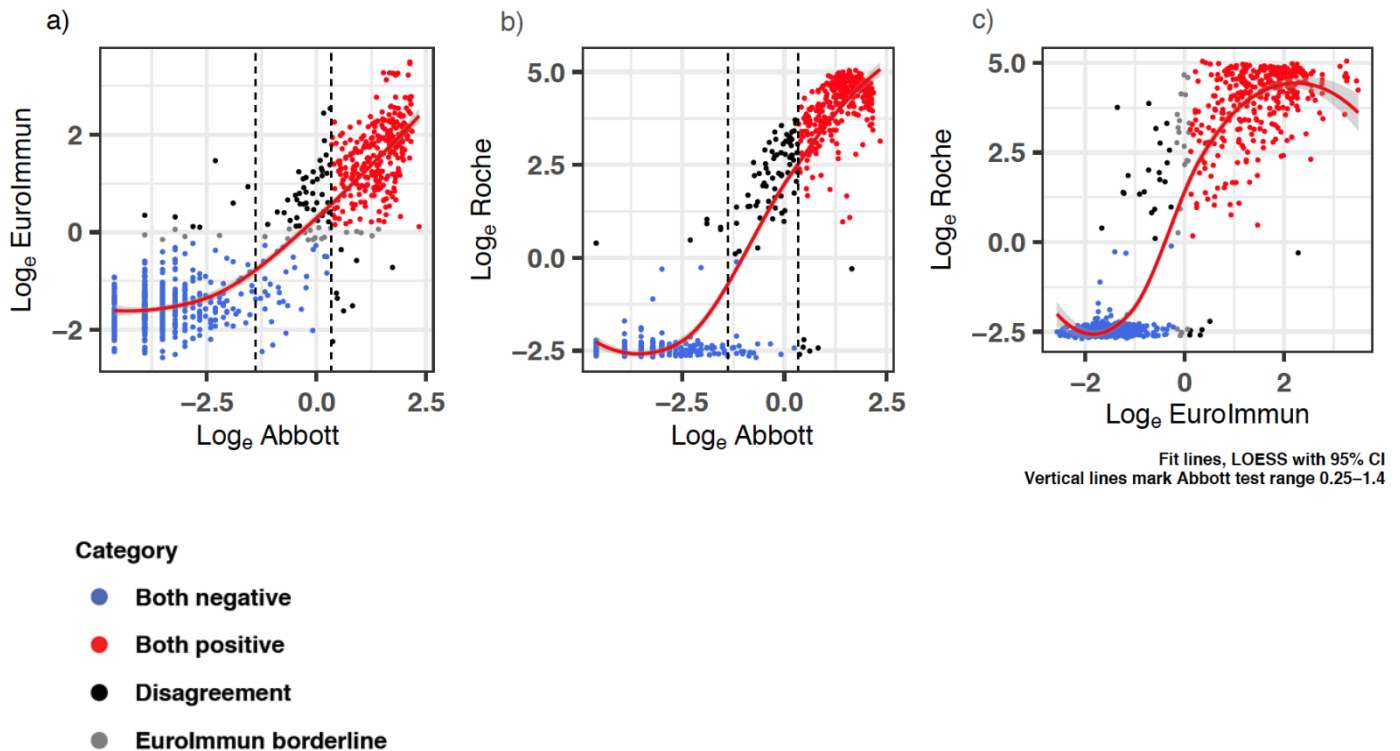
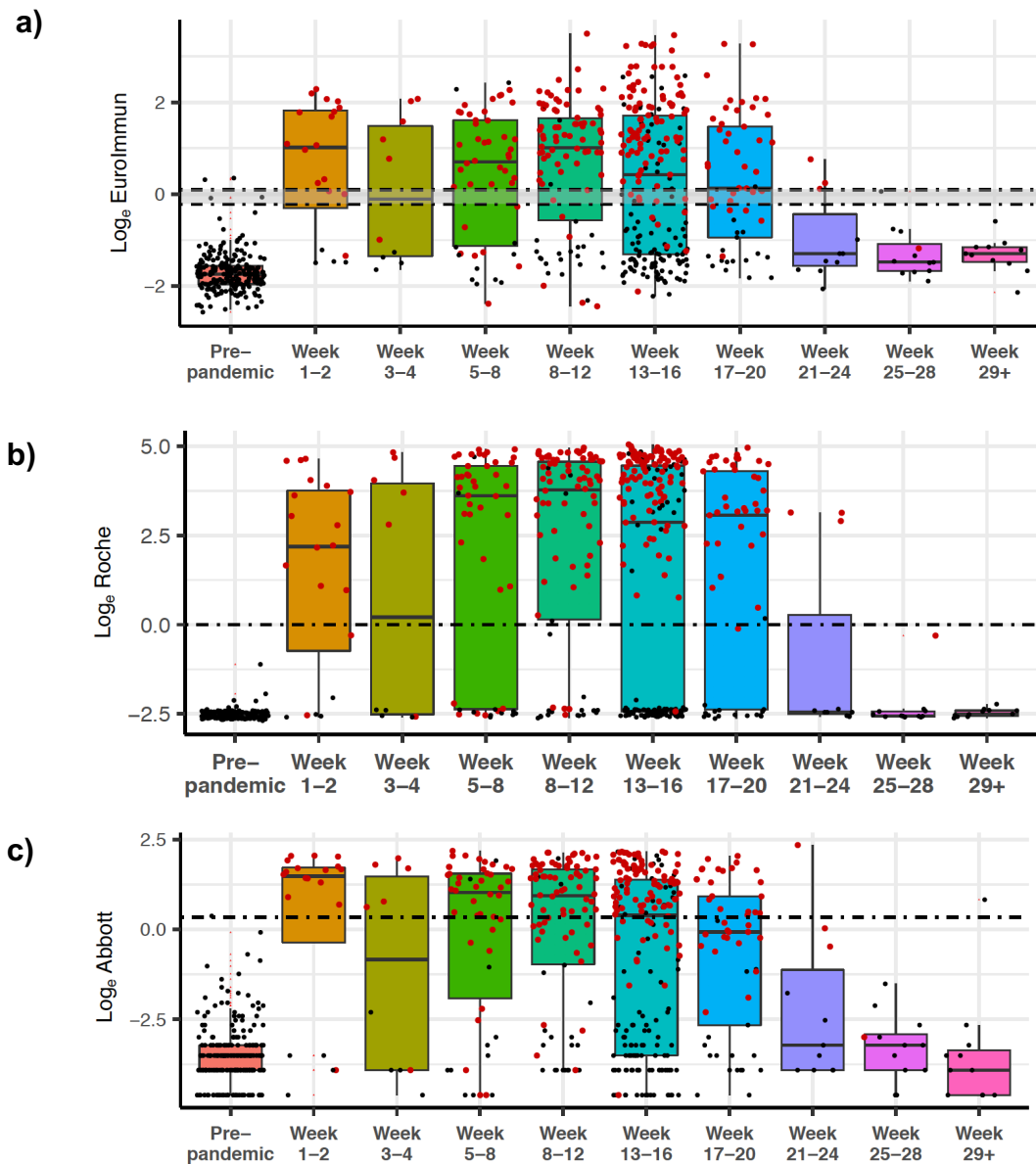


Figure 1: Two-way correlation scatter plots comparing a) EuroImmun b) Abbott and c) Roche immunoassays. Pearson χ^2 test was used to assess correlations.

The results for each test were log transformed to ensure results follow a normal distribution. Negative agreement shown as blue dots, red dots show positive agreement for the two immunoassays, whilst black dots show disagreement and grey dots as the EuroImmun borderline results. Vertical lines mark the Abbott test range 0.25-1.4. n=880. The graphs show positive correlations between all immunoassays evaluated, with the fewest disagreement of results between the Log of Roche and the Log of EuroImmun. Fit lines LOESS, with 95% confidence interval shaded.



d)

	Ratio Antibody level : assay positivity cut-off									
	Week									
	Pre-2020	1-2	3-4	5-8	8-12	13-16	17-20	21-24	25-28	29+
EuroImmun	-2.65	1.33	0.2	0.87	1.32	0.47	0.04	-2.01	-2.26	-2.01
Roche	-3.64	3.16	3.05	5.21	5.45	4.14	4.42	-3.54	-3.69	-3.61
Abbott	-5.54	1.64	-0.51	0.99	0.86	0.08	-0.59	-5.13	-5.13	-6.13
Sample number (n=)	223	20	10	50	90	202	53	11	12	11

Figure 2: SARS-CoV-2 antibody levels by (a) EuroImmun, (b) Roche, and (c) Abbott, relative to weeks since first reported symptoms or positive PCR result (where data available). RT-PCR positive individuals are denoted by red dots, while individuals with time since symptom data are denoted in black. Dashed lines delineate \log_e equivalent of positivity threshold (EuroImmun 1.1, Roche 1.0, Abbott 1.4) for each test, and the negativity threshold for EuroImmun (0.8; borderline result between the two lines). Black bars indicate median, within IQR (interquartile range) boxes for EuroImmun/Roche/Abbott value. Red triangles indicate outliers, based on $1.5 \times$ IQR (interquartile range). **(d)** Antibody level ratios for assays over time show varying peaks levels depending on test. Calculated by first establishing the median per time period, then calculating \log_2 ratio for each period versus each respective assay positivity cut-off.

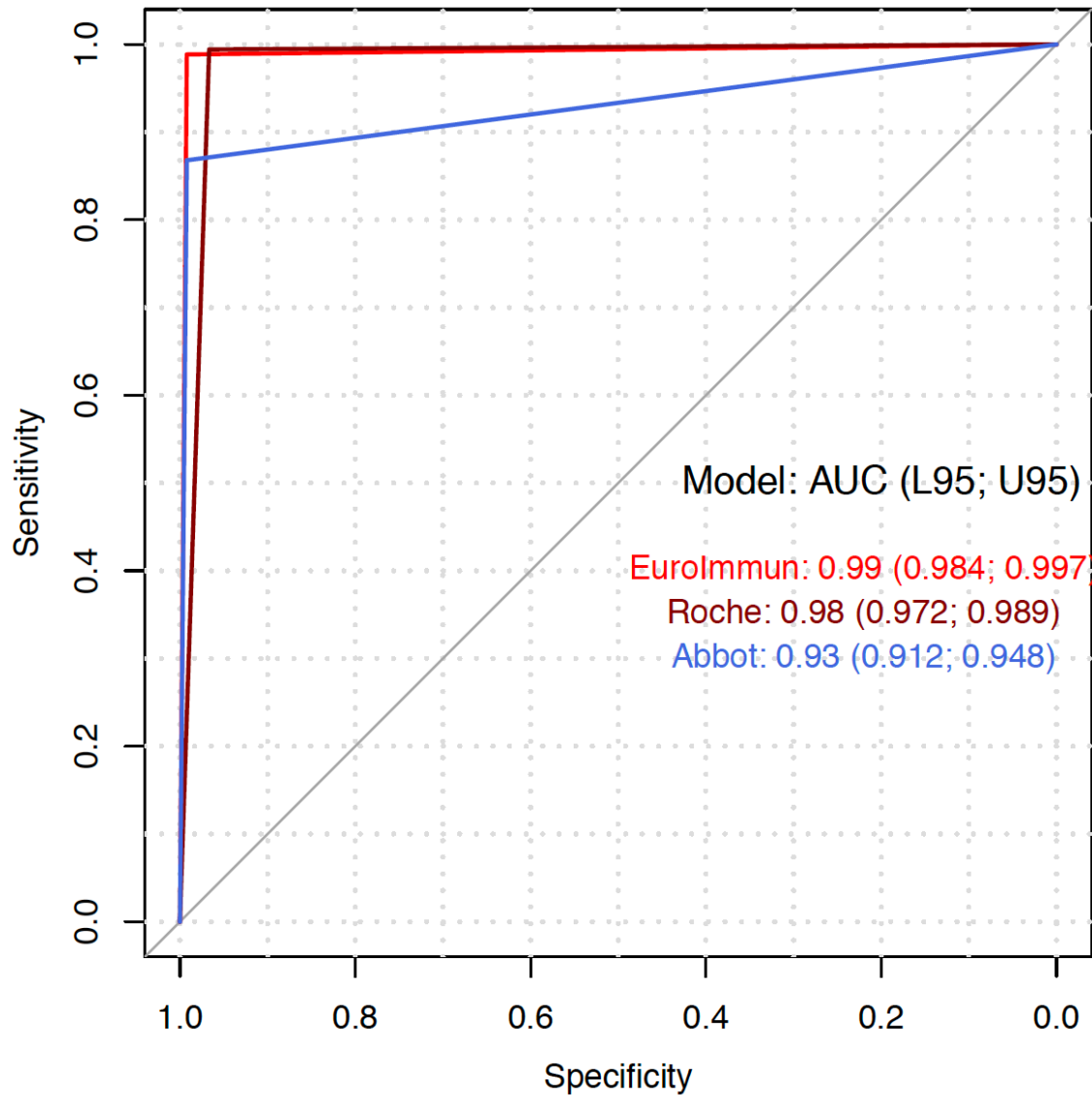


Figure 3: Receiver operating curve for Abbott, EuroImmun and Roche antibody immunoassays. To evaluate the performance and accuracy of each test binary logistic regression was carried out and the area under the curve (AUC) analysis was carried out to include lower and upper 95% confidence limits for each test; EuroImmun (red), Roche (maroon), Abbott (blue). The AUC for each test is close to 1, indicating the immunoassays perform with a high level of accuracy. Diagonal grey line is the reference line (AUC=0.5).

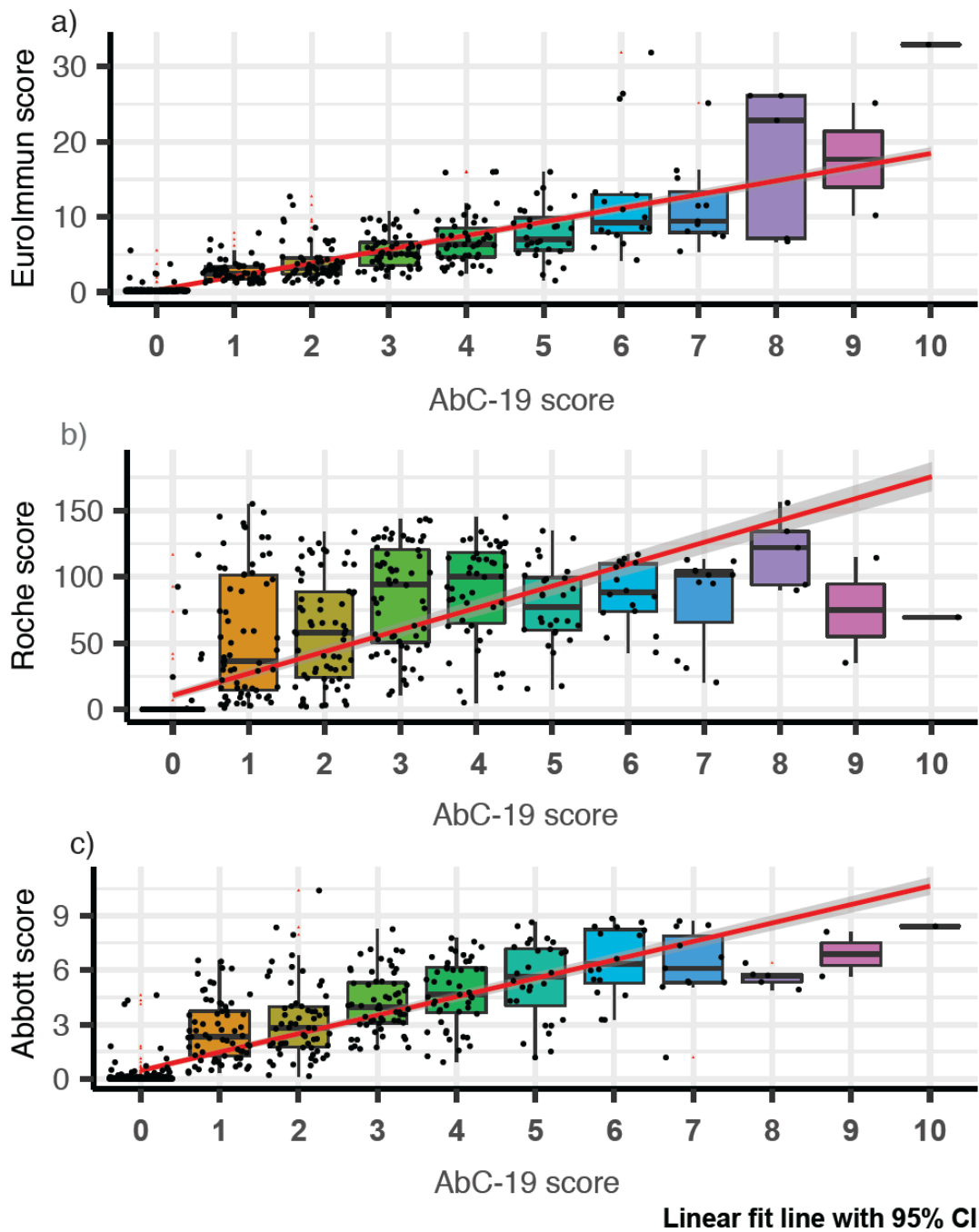


Figure 4: AbC-19 correlation to a) EuroImmun b) Roche and c) Abbott scores.

Box plots overlaid on scatter plot, comparing AbC-19 test scores to EuroImmun, Roche and Abbott quantitative antibody values. Red linear line of best fit with 95% confidence interval shaded in grey. Black bars indicate median, within IQR (interquartile range) boxes for EuroImmun/Roche/Abbott value. Red triangles indicate outliers, based on $1.5 \times$ IQR (interquartile range).