

COVID-19 in patients with hepatobiliary and pancreatic diseases: A single-centre cross-sectional study in East London

Abu Z M Dayem Ullah, UKRI/Rutherford research fellow^{1,2}, Lavanya Sivapalan, PhD student¹, Hemant M Kocher, professor of liver and pancreas surgery^{1,3}, Claude Chelala, professor of bioinformatics¹

Author affiliations

¹ Centre for Cancer Biomarkers and Therapeutics, Barts Cancer Institute, Queen Mary University of London, London, UK

² Barts and the London HPB Centre, The Royal London Hospital, Barts Health NHS Trust, London, UK

³ Centre for Tumour Biology, Barts Cancer Institute, Queen Mary University of London, London, UK

Correspondence to:

Abu Z M Dayem Ullah

Centre for Cancer Biomarkers and Therapeutics, Barts Cancer Institute, Queen Mary University of London, London EC1M 6BQ, UK

Email: d.ullah@qmul.ac.uk

ABSTRACT

Objective To explore risk factors associated with COVID-19 susceptibility and survival in patients with pre-existing hepato-pancreato-biliary (HPB) conditions.

Design Cross-sectional study.

Setting East London Pancreatic Cancer Epidemiology (EL-PaC-Epidem) study at Barts Health NHS Trust, UK. Linked electronic health records were interrogated on a cohort of participants (age ≥ 18 years), reported with HPB conditions between 1 April 2008 and 6 March 2020.

Participants EL-PaC-Epidem study participants, alive on 12 February 2020, and living in East London within the previous six months (n=15 440). The cohort represents a multi-ethnic population with 51.7% belonging to the non-White background.

Main outcome measure COVID-19 incidence and mortality.

Results Some 226 (1.5%) participants had confirmed COVID-19 diagnosis between 12 February and 12 June 2020, with an increased odds for men (OR 1.56; 95% CI 1.2 to 2.04) and Black ethnicity (2.04; 1.39 to 2.95) as well as patients with moderate to severe liver disease (2.2; 1.35 to 3.59). Each additional comorbidity increased the odds of infection by 62%. Substance mis-users were at more risk of infection, so were patients on Vitamin D treatment. The higher odds ratios in patients with chronic pancreatic or mild liver conditions, age >70 , and history of smoking or obesity were due to co-existing comorbidities. Increased odds of death were observed for men (3.54; 1.68 to 7.85) and Black ethnicity (3.77; 1.38 to 10.7). Patients having respiratory complications from COVID-19 without a history of chronic respiratory disease also had higher odds of death (5.77; 1.75 to 19).

Conclusions In this large population-based study of HPB patients, men, Black ethnicity, pre-existing moderate to severe liver conditions, six common medical multi-morbidities, substance mis-use, and a history of Vitamin D treatment independently posed higher odds of acquiring COVID-19 compared to their respective counterparts. The odds of death were significantly high for men and Black people.

STRENGTHS AND LIMITATIONS OF THIS STUDY

- First multi-ethnic population-based study on COVID-19 in patients with hepato-pancreato-biliary group of diseases.
- Systematic identification of the effect, or the lack of it, of individual demographic and clinical factors on the infection and mortality of COVID-19 in a large cohort of over 15 000 patients, robustly controlling for potential confounders in their evaluation.
- Access to longitudinal data from linked primary and secondary care electronic health records, and use of rule-based phenotyping algorithms allowed for improved completeness and accuracy of the explored variables.
- Some observed increased odds of SARS-CoV-2 infection and related death could be plausibly explained by unmeasured confounding.
- The effects reported in the study could be influenced by the relatively smaller size of COVID-19 cases within this cohort.

INTRODUCTION

COVID-19 is a novel infectious disease caused by severe acute respiratory syndrome coronavirus 2 (SARS-CoV-2), with a wide-ranging disease course. Infection and mortality rates of the COVID-19 pandemic have varied widely among nations and demographics,¹ while risks are still being explored, identified and categorised according to the severity.^{2,3} There are several confirmed risk factors of COVID-19 and severe outcomes, including old age,^{2,4,5} chronic pulmonary disease,^{2,4,6} cardiovascular disease,^{2,5,6} hypertension,⁵ chronic kidney disease,^{2,4,6} diabetes mellitus,^{2,5} obesity,^{2,6,7} haematological diseases,^{2,4} malignancy,^{2,4,6,8} and immunocompromised state such as HIV infection.^{2,4,9} Medical complications following hospitalisation, including acute episodes of cardiovascular, respiratory, neurological, renal, or hepatic failure, have also been linked to severe outcomes.¹⁰ There are also other risk factors reported, such as smoking^{11,12} or being from a Black, Asian and minority ethnic (BAME) group,¹³⁻¹⁵ the effects of which are either mixed or the reasoning is not clearly understood.⁴ Concerns have also been raised regarding the use of various medications with respect to the risk or protective effect to COVID-19.¹⁶⁻¹⁸

Patients with diseases of the liver, pancreas or biliary tract (hepato-pancreato-biliary; HPB) are considered, in general, to be at risk of developing serious medical conditions. Expression of the ACE2 gene – a receptor for the SARS-CoV-2 virus – along the gastrointestinal tract is well documented, which suggests the digestive system is a potential route for COVID-19,¹⁸ making patients with a diseased HPB system susceptible to this novel infection. The prevalence of COVID-19 among patients with hepatic conditions has been explored,^{6,15,19} indicating severe liver disease as a moderate risk factor for COVID-19.² In contrast, very limited data is available on the prevalence of COVID-19 among patients with pancreatic or biliary conditions,²⁰ although pancreatic manifestations of the disease are rare.^{21,22} It is important that clinical characteristics of COVID-19 are investigated for the HPB group as a whole, not only because these diseases demonstrate similar clinical-biologic behaviours,²³ but also since they are commonly seen by a single clinical unit with specialist expertise in the management of these diseases.

The United Kingdom (UK) has been the worst affected country in Europe by COVID-19, with a reported death toll of 44819 as of 30 June 2020.²⁴ At the same time, London had the highest incidence and mortality rates, with 33775 confirmed cases and 8438 deaths.^{25,26} Barts Health NHS Trust (BHNT) is the largest National Health Service (NHS) Trust in England and acts as provider of district general hospital facilities for around 2.5 million population of East London as well as a range of tertiary care services.²⁷ Between March 1 and June 30, the three boroughs in East London - Tower Hamlets, Waltham Forest and Newham - had a combined age-standardised COVID-19 related mortality rate of 195 per 100 000 people. This was significantly higher than the rest of London where the age-standardised COVID-19 related mortality rate was 156 per 100 000 people.²⁵ East London is also one of the most ethnically diverse local areas in the country where an estimated 57% residents belong to a BAME group.²⁸ Significant health inequalities exist within the local population including higher rates of cancer, diabetes and obesity,²⁹ compared to the wider population. These conditions are not only known to be a precursor or consequence to HPB diseases, but also linked to COVID-19 and severe outcomes. In this study, we integrated primary, secondary and tertiary electronic healthcare

records (EHRs) of HPB patients in East London. We inspected the demographics, lifestyle, comorbidities and associated medication use of these patients, and any possible links with SARS-CoV-2 infection. We also evaluated whether the effect of these prevalent factors as well as clinical observations during COVID-19 related hospitalisation are associated with mortality. This study will inform the management of this specific cohort of patients.

METHODS

Study setting and data sources

All data utilised for this study were collected and processed under the East London Pancreatic Cancer Epidemiology (EL-PaC-Epidem) study at BHNT. In brief, EL-PaC-Epidem is an ongoing study that ascertains patients diagnosed or reported with HPB diseases including cancers, as well as control patients (e.g., small intestine, hernia), within five BHNT hospital sites (The Royal London Hospital, Newham University Hospital, St Bartholomew's Hospital, Whipps Cross University Hospital, Mile End Hospital) between 2008 and 2021. The EL-PaC-Epidem study was approved by the East of England - Essex Research Ethics Committee (19/EE/0163; 17 May 2019) and supported by the NHS Confidentiality Advisory Group for collecting and processing confidential patient information without consent (19/CAG/0219; 17 January 2020). The study is limited to the secondary use of a specified subset of patients' retrospective EHR generated during the course of normal care of these patients. It links EHRs from different data sources (via UK unique individual NHS numbers), including primary care through General Practitioners (GP) ([Discovery East London Programme data service \[DDS\]](#)) and secondary or tertiary care through hospitals (BHNT Consolidated Data Extract [CDE]). Patients, who have previously informed their GPs or NHS to stop sharing their personal and health records for purposes other than their individual care, were automatically excluded. The current EL-PaC-Epidem study cohort consists of 27321 adult patients (aged 18 years or over), diagnosed or reported with at least one of the HPB conditions (supplemental table 1) between 1 April 2008 and 6 March 2020.

Study design and population

This is a single-centre cross-sectional study utilising the linked EHR data of patients with a history of HPB diseases. Within this specific patient group, the study focused on the incidence of COVID-19, and examined the association of SARS-CoV-2 infection with six common medical comorbidities (i.e., diabetes, hypertension, high cholesterol, cardiovascular disease, chronic respiratory disease, renal disease), lifestyle factors (i.e., smoking, alcohol use, substance misuse, obesity), and use of selected prescription medications.

As the first case of COVID-19 in London was reported on 12 February 2020, we used this as the start date for this study and extracted data on a subgroup of the EL-PaC-Epidem study cohort until 12 June 2020 (figure 1). Eligible individuals were a resident in East London and alive on the study start date (EL-HPB). Residency of East London was inferred if a patient had at least one appointment or prescription issued from a GP in East London boroughs or had a scheduled or unscheduled visit to one of the BHNT hospitals within the last six months (after 12 August 2019). Patients with *confirmed* SARS-CoV-2 infection were identified by: i) the presence of International Classification of Diseases 10th edition (ICD-10) or Systematized Nomenclature of Medicine Clinical Terms (SNOMED CT) codes for confirmed COVID-19 or SARS diagnosis assigned in their hospital encounters or GP records during the observation period between February 12 and June 12, 2020 (supplemental table 2) OR ii) positive record of SARS-CoV-2 RNA through BHNT oral and/or nasal swabs test during the same period. For confirmed COVID-19

cases, the earliest date of diagnosis or positive swab test was considered as the *index date*, whereas 12 February 2020 was considered as *index date* for rest of the cohort. Patients, who were assigned an ICD-10 or SNOMED CT diagnosis code for *suspected* COVID-19 but were neither reassigned to confirmed diagnosis nor positive RNA test, were excluded from the analysis.

We also examined the onset-to-death distribution within the patient group with a confirmed COVID-19 diagnosis (EL-HPB-COVID). Mortality data was collected on 12 October 2020. Following the latest Public Health England (PHE) definition³⁰, the death of a patient within 28 days of the index date is considered as a COVID-19 related death. This is different from a 60-day window that was being used in the UK prior to 12 August 2020 to define COVID-19 related death. To ensure consistency, COVID-19 patients who survived beyond 60 days of index date are considered as survivor in the study; Nine patients who died between 29 and 60 days of diagnosis were excluded from the analysis. The onset-to-death distribution was analysed in the context of same set of comorbidities, lifestyle factors and medication use, as well as cardiovascular, respiratory and renal complications during hospital care.

<<Figure 1 here>>

Figure 1 Selection of patients for the cross-sectional study.

Procedures

All patient data were obtained from retrospective EHR, harmonised across hospital and GP coding systems where applicable, and organised into 40 primary variables across seven categories corresponding to the focus of the study (table 1). BHNT CDE uses 2011 UK census grouping to record ethnicity, ICD-10 or SNOMED diagnosis codes for clinically relevant diagnoses, and Office of the Population Censuses and Surveys Classification of Interventions and Procedures version 4 (OPCS-4) procedural codes for treatments and procedures. Physiological observations (weight, body-mass index [BMI], blood pressure) and laboratory tests results are available in locally developed terms. Semi-structured text entries such as discharge summaries, past medical history and a lifestyle questionnaire collected during the pre-operative assessment, and presenting symptoms from scheduled or unscheduled hospital visits are also available. All GP records via DDS were available in Read Codes v2 or Clinical Terminology Version 3 (CTV3) codes, except the prescribed medication records and COVID-19 diagnosis which were available in SNOMED codes. For each variable, we consulted ICD-10, SNOMED, Read, CTV3 or OPCS-4 dictionaries as appropriate to construct the mapping *codelists*. For some variables, codelists also included keywords to conduct automated sub-string search within semi-structured text as well as local laboratory test and physiological observation terms.

Rule-based phenotyping algorithms were developed for each categorical variable to characterise patients, integrating information from multiple sources where available to counteract bias. HPB diseases were grouped into four categories (supplemental table 1): *any* malignant disease, and non-malignant diseases of liver, pancreas or biliary tract. Non-malignant liver diseases were further divided into mild and moderate to severe subgroups, extending the definition from CDMF Charlson Comorbidity Index,³¹ whereas non-malignant pancreas or biliary diseases were

	Number of novel complications*	None, 1, 2, 3
Outcome	COVID-19 incidence COVID-19 mortality	non-COVID-19, COVID-19 Survivor, Deceased

All variables are categorical, unless otherwise stated. For categorical variables, the first value represents the reference level. Each HPB diagnosis groups are independent binary categorical variables. * Derived variables.

Phenotyping algorithms defining the comorbidities were based on diagnosis codes (presence) or semi-structured text search (presence or absence), with the additional inclusion of procedural codes (presence), some observation or laboratory test results (presence) and related medication use (at least three prescriptions). Patients were considered to have or have had a specific medical condition if they met at least one criterion indicating the presence of the condition before the *index date*, otherwise they were considered negative for the condition.

Phenotyping algorithms defining the lifestyle factors were based on the longitudinal entries (current, past or never) derived from diagnosis codes and free text search, with the additional inclusion of BMI observation for obesity. Obesity was defined as BMI of 30 kg/m² or more. Patients assigned *never* status at any point but having a record of *current* or *past* status before that date were reassigned to *past* status. The most recent lifestyle record before or on the *index date* was then used to assign *current*, *past* or *never* status to the patients. Patients with no record of a specific lifestyle factor were classified as having missing data. Patients were assigned *current*, *past* or *non-user* status for medication use variables based on the number of GP prescriptions issued in the last two years for the medicines under specific medication groups. Patients with no record of prescription for particular medications were assigned *non-user* status. With at least three prescriptions issued, a patient was assigned *current user* status if the latest issue was within three months preceding the *index date*, and *past user* status otherwise. Patients with record of less than three prescriptions were classified as *non-user*. Patients with COVID-19 were considered to have a specific complication during admitted patient care if at least one of the hospital diagnosis codes from the complications *codelist* was recorded during the observation period after *index date*, otherwise they were considered negative for the complication. A patient was considered to have a *recurrent* complication if they had a history of that particular comorbidity, otherwise it was considered as a *novel* complication.

Selection of study variables, *codelist* construction, and phenotyping algorithm development were done in consultation with a panel of clinicians and scientists (HMK, CC, LS). A comprehensive list of codelists and phenotyping algorithms for the study variables are available on the [EL-PaC-Epidem portal](https://pac-epidem-el.bcc.qmul.ac.uk/covid-19/) (<https://pac-epidem-el.bcc.qmul.ac.uk/covid-19/>).

Statistical analysis

We conducted descriptive analyses for the EL-HPB cohort as a whole, by group for patients with confirmed SARS-CoV-2 infection and the rest (herein referred to as COVID-19 and non-COVID-19 respectively). Differences in demographic and clinical characteristics between the groups were assessed with Pearson's Chi-square test, Fisher's Exact test and Kruskal-Wallis rank sum test, as appropriate. P values less

than 0.05 were considered significant. Similar descriptive analyses were performed for the EL-HPB-COVID cohort, and by survivor and deceased groups.

To explore the risk factors associated with COVID-19 susceptibility and subsequent survival, the effect size for each variable under investigation was evaluated with odds ratios (ORs) with 95% confidence intervals (CI), using regression models with a binomial distribution. Crude ORs were obtained from univariable regression models, and then simultaneously controlled for a fixed set of potential confounders (gender, ethnicity, age group) using multivariable regression models with Benjamini-Hochberg correction for P values adjustment. The median age of the overall EL-HPB cohort being 57, a simplified binary age grouping (18-60, 61+) was used in multivariable regression models for comorbidity, lifestyle, medication use and post-diagnosis complication analyses. Since a participant with non-malignant HPB diagnoses for multiple organs can be represented in multiple HPB subgroups, the effect estimation for individual HPB disease variables was further mutually controlled for other HPB diseases.

We also conducted more in depth post hoc analysis to evaluate the confounding effect of pre-existing medical conditions by adding comorbidity covariates individually in the multivariable regression models. Finally, effect modification by non-malignant HPB disease subgroups was evaluated by adding interaction terms in the models and comparing them with models lacking this interaction via the likelihood ratio test. Any potential association between HPB diseases and COVID-19 susceptibility/mortality risk factors were further evaluated in stratified analyses according to the disease subgroups.

Patients with missing data for individual categorical variables were included in the descriptive analyses and in regression models for effect estimation. All statistical analyses and visualisations were performed in R (version 3.5.1).

Patient and public involvement

Patients and the public were involved in evaluating the design of the umbrella study (EL-PaC-Epidem), particularly the notion of collection and processing of retrospective patient data without their consent. The support from NHS Confidentiality Advisory Group was obtained based on the positive opinion posed by patient and the public.

RESULTS

Population characteristics

The final EL-HPB cohort consisted of 15 540 patients, after applying the eligibility criteria and excluding 168 suspected but unconfirmed COVID-19 cases. By 12 June 2020, 226 (1.5%; 145 per 10 000 adult population) confirmed cases of COVID-19 were reported in this cohort (figure 1). This was more than three-times higher than in the general population of East London where prevalence of COVID-19 at the same time was 41 per 10 000 adult population.²⁵ More than half of the COVID-19 cases had some form of non-malignant liver diseases (N=138, 62.8%); however, when comparing confirmed COVID-19 cases with the non-COVID-19 cases, we observed a disproportionate infection frequency in patients with chronic pancreatic conditions (14.1% vs 8.8%) and moderate to severe liver conditions (11.4% vs 6.9%). We also observed differences in gender, ethnic origin, and age group between COVID-19 and non-COVID-19 cases (table 2). The proportion of males was higher in the COVID-19 group compared to the baseline non-COVID-19 group (53.5% vs 43.7%, $P=0.005$). The same trend was observed for Black population (17.7% vs 10.7%). COVID-19 patients were older than non-COVID-19 patients (median 67 years, interquartile range 55.1 to 80.9 years vs 57.1 years, 44.8 to 69.2 years, $P<0.001$), with a steady increase in infection frequency with age. Some 78.3% of COVID-19 patients had three or more comorbidities, with hypertension being the most common comorbidity (85.4%), followed by high cholesterol and diabetes (table 2). Only eight COVID-19 patients had none of the six medical conditions. In general, COVID-19 patients had a higher rate of past history of smoking, drinking, substance mis-use and obesity compared to the non-COVID-19 group. Consistent with the underlying prevalent comorbidities of the COVID-19 group, history of prescription drugs use associated with managing hypertension or cardiovascular disease (ACE inhibitor, calcium channel blocker, β -blocker, aldosterone antagonists, antiarrhythmic, antiplatelet, anticoagulant), cholesterol (statin), inflammation (glucocorticoid, β 2-agonists) or background HPB condition (proton pump inhibitor) were higher in COVID-19 patients (table 2). Intake of vitamin D was also significantly higher in COVID-19 patients.

Between 12 February and 12 August 2020, the all-cause mortality rate in the non-COVID-19 group was 2.4%, whereas the rate in the COVID-19 group during the same period was 27.4% (table 2). When analysing the 53 deceased and 164 surviving patients with confirmed SARS-CoV-2 infection, we found differences in gender ($P=0.005$) and age ($P<0.001$); deceased patients were older than the survivors (median 80.4 years, interquartile range 71.7 to 85.1 years vs 62.9 years, 49.8 to 77.4 years) with steady increase in death with age becoming prominent in those above 70 years of age (table 3). We observed a higher mortality amongst South Asian (34% vs 29.3%) and Black (26.4% vs 13.4%) populations, which were even more pronounced when comparing with the all-cause mortality in the non-COVID-19 group (supplemental table 3). Higher mortality was observed for pancreatic and biliary disease patients in general, whereas liver disease patients had higher survival rate (table 3). The median survival period for the deceased patients from the date of confirmed COVID-19 diagnosis was 11 days (interquartile range 2 to 18 days). After stratifying patients according to the comorbidities investigated, the mortality for HPB patients with COVID-19 was at least six-times higher than that of HPB patients without COVID-19 (supplemental table 3). Diabetes, hypertension,

cardiovascular and renal conditions, in particular, were associated with mortality in COVID-19 patients (table 3). All except one deceased patient had at least three additional comorbidities, compared to 71.3% of patients who survived. The deceased group had higher proportion of patients with a history of past smoking and current substance mis-use, but no overall differences were observed for drinking and obesity. Notable differences were observed in the use of glucocorticoid, β 2-agonists, and statins. Recurrent complications were more common in the deceased group compared to survivors, however frequency of novel respiratory complications was notably higher in the deceased group (39.6% vs 21.3%).

Table 2 Differences in demographic, comorbidity, lifestyle, and medication use characteristics between COVID-19 infected and non-COVID-19 groups.

	non-COVID-19 (N=15214)	COVID-19 (N=226)	Total (N=15440)	P value
Demographics				
Gender				0.005
Female	8570 (56.3%)	105 (46.5%)	8675 (56.2%)	
Male	6644 (43.7%)	121 (53.5%)	6765 (43.8%)	
Ethnic origin				0.004
White	6914 (45.4%)	97 (42.9%)	7011 (45.4%)	
South Asian	4381 (28.8%)	68 (30.1%)	4449 (28.8%)	
Black	1635 (10.7%)	40 (17.7%)	1675 (10.8%)	
Other	1855 (12.2%)	19 (8.4%)	1874 (12.1%)	
Unknown	429 (2.8%)	2 (0.9%)	431 (2.8%)	
HPB cancer				1
No	14779 (97.1%)	220 (97.3%)	14999 (97.1%)	
Yes	435 (2.9%)	6 (2.7%)	441 (2.9%)	
Pancreatic disease*				0.017
No	12264 (83.0%)	170 (77.3%)	12434 (82.9%)	
Acute	1211 (8.2%)	19 (8.6%)	1230 (8.2%)	
Chronic	1304 (8.8%)	31 (14.1%)	1335 (8.9%)	
Liver disease*				0.004
No	6781 (45.9%)	82 (37.3%)	6863 (45.8%)	
Mild	6985 (47.3%)	113 (51.4%)	7098 (47.3%)	
Moderate/Severe	1013 (6.9%)	25 (11.4%)	1038 (6.9%)	
Biliary disease*				0.159
No	7589 (51.3%)	127 (57.7%)	7716 (51.4%)	
Acute	738 (5.0%)	11 (5.0%)	749 (5.0%)	
Chronic	6452 (43.7%)	82 (37.3%)	6534 (43.6%)	
Age				<0.001
Median	57.08	67.03	57.22	
Q1, Q3	44.76, 69.19	55.07, 80.93	44.86, 69.42	

Age group				<0.001
18-40	2803 (18.4%)	23 (10.2%)	2826 (18.3%)	
41-50	2714 (17.8%)	26 (11.5%)	2740 (17.7%)	
51-60	3407 (22.4%)	35 (15.5%)	3442 (22.3%)	
61-70	2957 (19.4%)	42 (18.6%)	2999 (19.4%)	
71-80	1980 (13.0%)	43 (19.0%)	2023 (13.1%)	
80+	1353 (8.9%)	57 (25.2%)	1410 (9.1%)	
All-cause mortality				<0.001
Survivor	14845 (97.6%)	164 (72.6%)	15009 (97.2%)	
Deceased	369 (2.4%)	62 (27.4%)	431 (2.8%)	
Comorbidities				
Diabetes	5854 (38.5%)	148 (65.5%)	6002 (38.9%)	<0.001
Hypertension	9759 (64.1%)	193 (85.4%)	9952 (64.5%)	<0.001
Cholesterol	8227 (54.1%)	156 (69.0%)	8383 (54.3%)	<0.001
Cardiovascular	4283 (28.2%)	131 (58.0%)	4414 (28.6%)	<0.001
Renal	3094 (20.3%)	110 (48.7%)	3204 (20.8%)	<0.001
Respiratory	4574 (30.1%)	111 (49.1%)	4685 (30.3%)	<0.001
Number of comorbidities				<0.001
None	2410 (15.8%)	8 (3.5%)	2418 (15.7%)	
1	2924 (19.2%)	13 (5.8%)	2937 (19.0%)	
2	3039 (20.0%)	28 (12.4%)	3067 (19.9%)	
3 or more	6841 (45.0%)	177 (78.3%)	7018 (45.5%)	
Lifestyle factors				
Smoker				<0.001
Not available	436 (2.9%)	2 (0.9%)	438 (2.8%)	
Never	6425 (42.2%)	84 (37.2%)	6509 (42.2%)	
Past	5110 (33.6%)	114 (50.4%)	5224 (33.8%)	
Current	3243 (21.3%)	26 (11.5%)	3269 (21.2%)	
Drinker				0.021
Not available	2505 (16.5%)	28 (12.4%)	2533 (16.4%)	
Never	3857 (25.4%)	58 (25.7%)	3915 (25.4%)	
Past	2145 (14.1%)	47 (20.8%)	2192 (14.2%)	
Current	6707 (44.1%)	93 (41.2%)	6800 (44.0%)	
Substance user				<0.001
Not available	7686 (50.5%)	99 (43.8%)	7785 (50.4%)	
Never	3606 (23.7%)	29 (12.8%)	3635 (23.5%)	
Past	403 (2.6%)	13 (5.8%)	416 (2.7%)	
Current	3519 (23.1%)	85 (37.6%)	3604 (23.3%)	
Obese				<0.001
Not available	406 (2.7%)	1 (0.4%)	407 (2.6%)	
Never	6715 (44.1%)	85 (37.6%)	6800 (44.0%)	
Past	2199 (14.5%)	51 (22.6%)	2250 (14.6%)	
Current	5894 (38.7%)	89 (39.4%)	5983 (38.8%)	

Prescription medication use				
ACE inhibitor				<0.001
Non-user	12024 (79.0%)	161 (71.2%)	12185 (78.9%)	
Past user	518 (3.4%)	28 (12.4%)	546 (3.5%)	
Current user	2672 (17.6%)	37 (16.4%)	2709 (17.5%)	
Angiotensin receptor blocker				0.024
Non-user	13530 (88.9%)	188 (83.2%)	13718 (88.8%)	
Past user	227 (1.5%)	5 (2.2%)	232 (1.5%)	
Current user	1457 (9.6%)	33 (14.6%)	1490 (9.7%)	
Aldosterone antagonist				<0.001
Non-user	14651 (96.3%)	205 (90.7%)	14856 (96.2%)	
Past user	137 (0.9%)	9 (4.0%)	146 (0.9%)	
Current user	426 (2.8%)	12 (5.3%)	438 (2.8%)	
β-blocker				<0.001
Non-user	12161 (79.9%)	145 (64.2%)	12306 (79.7%)	
Past user	410 (2.7%)	12 (5.3%)	422 (2.7%)	
Current user	2643 (17.4%)	69 (30.5%)	2712 (17.6%)	
Calcium channel blocker				0.005
Non-user	11714 (77.0%)	158 (69.9%)	11872 (76.9%)	
Past user	581 (3.8%)	17 (7.5%)	598 (3.9%)	
Current user	2919 (19.2%)	51 (22.6%)	2970 (19.2%)	
α-agonist				0.837
Non-user	15131 (99.5%)	225 (99.6%)	15356 (99.5%)	
Past user	23 (0.2%)	0 (0.0%)	23 (0.1%)	
Current user	60 (0.4%)	1 (0.4%)	61 (0.4%)	
Thiazide				0.759
Non-user	15131 (99.5%)	225 (99.6%)	15356 (99.5%)	
Past user	32 (0.2%)	0 (0.0%)	32 (0.2%)	
Current user	51 (0.3%)	1 (0.4%)	52 (0.3%)	
Antiplatelet				<0.001
Non-user	12512 (82.2%)	147 (65.0%)	12659 (82.0%)	
Past user	446 (2.9%)	10 (4.4%)	456 (3.0%)	
Current user	2256 (14.8%)	69 (30.5%)	2325 (15.1%)	
Antiarrhythmic				<0.001
Non-user	14440 (94.9%)	199 (88.1%)	14639 (94.8%)	
Past user	156 (1.0%)	7 (3.1%)	163 (1.1%)	
Current user	618 (4.1%)	20 (8.8%)	638 (4.1%)	
Anticoagulant				0.008
Non-user	14613 (96.0%)	208 (92.0%)	14821 (96.0%)	
Past user	144 (0.9%)	5 (2.2%)	149 (1.0%)	
Current user	457 (3.0%)	13 (5.8%)	470 (3.0%)	
Glucocorticoid				<0.001
Non-user	10878 (71.5%)	122 (54.0%)	11000 (71.2%)	
Past user	1278 (8.4%)	22 (9.7%)	1300 (8.4%)	

Current user	3058 (20.1%)	82 (36.3%)	3140 (20.3%)	
β2-agonist				<0.001
Non-user	13443 (88.4%)	172 (76.1%)	13615 (88.2%)	
Past user	286 (1.9%)	8 (3.5%)	294 (1.9%)	
Current user	1485 (9.8%)	46 (20.4%)	1531 (9.9%)	
Muscarinic antagonist				<0.001
Non-user	13531 (88.9%)	175 (77.4%)	13706 (88.8%)	
Past user	300 (2.0%)	10 (4.4%)	310 (2.0%)	
Current user	1383 (9.1%)	41 (18.1%)	1424 (9.2%)	
NSAID				0.117
Non-user	13703 (90.1%)	198 (87.6%)	13901 (90.0%)	
Past user	756 (5.0%)	10 (4.4%)	766 (5.0%)	
Current user	755 (5.0%)	18 (8.0%)	773 (5.0%)	
Vitamin D				<0.001
Non-user	12542 (82.4%)	139 (61.5%)	12681 (82.1%)	
Past user	573 (3.8%)	18 (8.0%)	591 (3.8%)	
Current user	2099 (13.8%)	69 (30.5%)	2168 (14.0%)	
Proton pump inhibitor				<0.001
Non-user	8332 (54.8%)	85 (37.6%)	8417 (54.5%)	
Past user	1167 (7.7%)	15 (6.6%)	1182 (7.7%)	
Current user	5715 (37.6%)	126 (55.8%)	5841 (37.8%)	
Statin				<0.001
Non-user	9128 (60.0%)	86 (38.1%)	9214 (59.7%)	
Past user	592 (3.9%)	16 (7.1%)	608 (3.9%)	
Current user	5494 (36.1%)	124 (54.9%)	5618 (36.4%)	
Immunosuppressant				0.103
Non-user	14722 (96.8%)	213 (94.2%)	14935 (96.7%)	
Past user	204 (1.3%)	5 (2.2%)	209 (1.4%)	
Current user	288 (1.9%)	8 (3.5%)	296 (1.9%)	

Values are n (%), unless otherwise specified. *Patients with HPB cancer were not included in the non-malignant disease groups.

Table 3 Differences in demographic, comorbidity, lifestyle, medication use, and post diagnosis complications characteristics between COVID-19 survivor and deceased groups.

	Survivor (N=164)	Deceased (N=53)	Total (N=217)	P value
Demographics				
Gender				0.005
Female	82 (50.0%)	15 (28.3%)	97 (44.7%)	
Male	82 (50.0%)	38 (71.7%)	120 (55.3%)	
Ethnic origin				0.053
White	74 (45.1%)	20 (37.7%)	94 (43.3%)	
South Asian	48 (29.3%)	18 (34.0%)	66 (30.4%)	
Black	22 (13.4%)	14 (26.4%)	36 (16.6%)	
Other	18 (11.0%)	1 (1.9%)	19 (8.8%)	
Unknown	2 (1.2%)	0 (0.0%)	2 (0.9%)	
Age				<0.001
Median	62.94	80.38	67.17	
Q1, Q3	49.81, 77.38	71.72, 85.12	55.00, 81.07	
Age group				<0.001
18-40	21 (12.8%)	1 (1.9%)	22 (10.1%)	
41-50	23 (14.0%)	2 (3.8%)	25 (11.5%)	
51-60	31 (18.9%)	2 (3.8%)	33 (15.2%)	
61-70	33 (20.1%)	8 (15.1%)	41 (18.9%)	
71-80	25 (15.2%)	16 (30.2%)	41 (18.9%)	
80+	31 (18.9%)	24 (45.3%)	55 (25.3%)	
HPB cancer				0.594
No	161 (98.2%)	51 (96.2%)	212 (97.7%)	
Yes	3 (1.8%)	2 (3.8%)	5 (2.3%)	
Pancreatic disease*				0.039
No	129 (80.1%)	33 (64.7%)	162 (76.4%)	
Acute	14 (8.7%)	5 (9.8%)	19 (9.0%)	
Chronic	18 (11.2%)	13 (25.5%)	31 (14.6%)	
Liver disease*				0.039
No	54 (33.5%)	27 (52.9%)	81 (38.2%)	
Mild	88 (54.7%)	19 (37.3%)	107 (50.5%)	
Moderate/Severe	19 (11.8%)	5 (9.8%)	24 (11.3%)	
Biliary disease*				0.101
No	99 (61.5%)	26 (51.0%)	125 (59.0%)	
Acute	5 (3.1%)	5 (9.8%)	10 (4.7%)	
Chronic	57 (35.4%)	20 (39.2%)	77 (36.3%)	
Survival				<0.001
Median	47	11	35	
Q1, Q3	28.75, 66.00	2.00, 18.00	13.00, 59.00	

Comorbidities				
Diabetes	99 (60.4%)	42 (79.2%)	141 (65.0%)	0.012
Hypertension	132 (80.5%)	52 (98.1%)	184 (84.8%)	0.002
Cholesterol	106 (64.6%)	41 (77.4%)	147 (67.7%)	0.085
Cardiovascular	84 (51.2%)	43 (81.1%)	127 (58.5%)	<0.001
Renal	67 (40.9%)	38 (71.7%)	105 (48.4%)	<0.001
Respiratory	80 (48.8%)	27 (50.9%)	107 (49.3%)	0.784
Number of comorbidities				<0.001
None	8 (4.9%)	0 (0.0%)	8 (3.7%)	
1	13 (7.9%)	0 (0.0%)	13 (6.0%)	
2	26 (15.9%)	1 (1.9%)	27 (12.4%)	
3 or more	117 (71.3%)	52 (98.1%)	169 (77.9%)	
Lifestyle factors				
Smoker				0.008
Not available	2 (1.2%)	0 (0.0%)	2 (0.9%)	
Never	67 (40.9%)	14 (26.4%)	81 (37.3%)	
Past	72 (43.9%)	37 (69.8%)	109 (50.2%)	
Current	23 (14.0%)	2 (3.8%)	25 (11.5%)	
Drinker				0.897
Not available	21 (12.8%)	6 (11.3%)	27 (12.4%)	
Never	44 (26.8%)	12 (22.6%)	56 (25.8%)	
Past	32 (19.5%)	12 (22.6%)	44 (20.3%)	
Current	67 (40.9%)	23 (43.4%)	90 (41.5%)	
Substance user				0.055
Not available	77 (47.0%)	19 (35.8%)	96 (44.2%)	
Never	24 (14.6%)	4 (7.5%)	28 (12.9%)	
Past	10 (6.1%)	2 (3.8%)	12 (5.5%)	
Current	53 (32.3%)	28 (52.8%)	81 (37.3%)	
Obese				0.184
Not available	0 (0.0%)	1 (1.9%)	1 (0.5%)	
Never	65 (39.6%)	18 (34.0%)	83 (38.2%)	
Past	33 (20.1%)	15 (28.3%)	48 (22.1%)	
Current	66 (40.2%)	19 (35.8%)	85 (39.2%)	
Prescription medication use				
ACE inhibitor				0.196
Non-user	122 (74.4%)	33 (62.3%)	155 (71.4%)	
Past user	20 (12.2%)	8 (15.1%)	28 (12.9%)	
Current user	22 (13.4%)	12 (22.6%)	34 (15.7%)	
Angiotensin receptor blocker				0.708
Non-user	137 (83.5%)	43 (81.1%)	180 (82.9%)	
Past user	3 (1.8%)	2 (3.8%)	5 (2.3%)	
Current user	24 (14.6%)	8 (15.1%)	32 (14.7%)	
Aldosterone antagonist				0.791
Non-user	150 (91.5%)	47 (88.7%)	197 (90.8%)	
Past user	6 (3.7%)	3 (5.7%)	9 (4.1%)	
Current user	8 (4.9%)	3 (5.7%)	11 (5.1%)	

β-blocker				0.847
Non-user	106 (64.6%)	32 (60.4%)	138 (63.6%)	
Past user	9 (5.5%)	3 (5.7%)	12 (5.5%)	
Current user	49 (29.9%)	18 (34.0%)	67 (30.9%)	
Calcium channel blocker				0.233
Non-user	116 (70.7%)	35 (66.0%)	151 (69.6%)	
Past user	14 (8.5%)	2 (3.8%)	16 (7.4%)	
Current user	34 (20.7%)	16 (30.2%)	50 (23.0%)	
α-agonist				0.569
Non-user	163 (99.4%)	53 (100.0%)	216 (99.5%)	
Current user	1 (0.6%)	0 (0.0%)	1 (0.5%)	
Thiazide				0.569
Non-user	163 (99.4%)	53 (100.0%)	216 (99.5%)	
Current user	1 (0.6%)	0 (0.0%)	1 (0.5%)	
Antiplatelet				0.076
Non-user	112 (68.3%)	28 (52.8%)	140 (64.5%)	
Past user	8 (4.9%)	2 (3.8%)	10 (4.6%)	
Current user	44 (26.8%)	23 (43.4%)	67 (30.9%)	
Antiarrhythmic				0.07
Non-user	147 (89.6%)	43 (81.1%)	190 (87.6%)	
Past user	6 (3.7%)	1 (1.9%)	7 (3.2%)	
Current user	11 (6.7%)	9 (17.0%)	20 (9.2%)	
Anticoagulant				0.47
Non-user	152 (92.7%)	47 (88.7%)	199 (91.7%)	
Past user	4 (2.4%)	1 (1.9%)	5 (2.3%)	
Current user	8 (4.9%)	5 (9.4%)	13 (6.0%)	
Glucocorticoid				0.016
Non-user	95 (57.9%)	19 (35.8%)	114 (52.5%)	
Past user	16 (9.8%)	6 (11.3%)	22 (10.1%)	
Current user	53 (32.3%)	28 (52.8%)	81 (37.3%)	
β2-agonist				0.023
Non-user	131 (79.9%)	33 (62.3%)	164 (75.6%)	
Past user	6 (3.7%)	2 (3.8%)	8 (3.7%)	
Current user	27 (16.5%)	18 (34.0%)	45 (20.7%)	
Muscarinic antagonist				0.351
Non-user	129 (78.7%)	39 (73.6%)	168 (77.4%)	
Past user	5 (3.0%)	4 (7.5%)	9 (4.1%)	
Current user	30 (18.3%)	10 (18.9%)	40 (18.4%)	
NSAID				0.116
Non-user	146 (89.0%)	43 (81.1%)	189 (87.1%)	
Past user	8 (4.9%)	2 (3.8%)	10 (4.6%)	
Current user	10 (6.1%)	8 (15.1%)	18 (8.3%)	
Vitamin D				0.076
Non-user	109 (66.5%)	26 (49.1%)	135 (62.2%)	
Past user	12 (7.3%)	6 (11.3%)	18 (8.3%)	
Current user	43 (26.2%)	21 (39.6%)	64 (29.5%)	

Proton pump inhibitor				0.82
Non-user	62 (37.8%)	18 (34.0%)	80 (36.9%)	
Past user	11 (6.7%)	3 (5.7%)	14 (6.5%)	
Current user	91 (55.5%)	32 (60.4%)	123 (56.7%)	
Statin				0.006
Non-user	72 (43.9%)	11 (20.8%)	83 (38.2%)	
Past user	12 (7.3%)	3 (5.7%)	15 (6.9%)	
Current user	80 (48.8%)	39 (73.6%)	119 (54.8%)	
Immunosuppressant				0.476
Non-user	156 (95.1%)	48 (90.6%)	204 (94.0%)	
Past user	3 (1.8%)	2 (3.8%)	5 (2.3%)	
Current user	5 (3.0%)	3 (5.7%)	8 (3.7%)	
Complications post diagnosis				
Cardiovascular				<0.001
No	66 (40.2%)	9 (17.0%)	75 (34.6%)	
Recurrent	84 (51.2%)	43 (81.1%)	127 (58.5%)	
Novel	14 (8.5%)	1 (1.9%)	15 (6.9%)	
Respiratory				0.003
No	49 (29.9%)	5 (9.4%)	54 (24.9%)	
Recurrent	80 (48.8%)	27 (50.9%)	107 (49.3%)	
Novel	35 (21.3%)	21 (39.6%)	56 (25.8%)	
Renal				<0.001
No	67 (40.9%)	8 (15.1%)	75 (34.6%)	
Recurrent	67 (40.9%)	38 (71.7%)	105 (48.4%)	
Novel	30 (18.3%)	7 (13.2%)	37 (17.1%)	
Recurrent complications				<0.001
None	43 (26.2%)	2 (3.8%)	45 (20.7%)	
1	43 (26.2%)	10 (18.9%)	53 (24.4%)	
2	46 (28.0%)	25 (47.2%)	71 (32.7%)	
3	32 (19.5%)	16 (30.2%)	48 (22.1%)	
Novel complications				0.691
None	99 (60.4%)	28 (52.8%)	127 (58.5%)	
1	52 (31.7%)	21 (39.6%)	73 (33.6%)	
2	12 (7.3%)	4 (7.5%)	16 (7.4%)	
3	1 (0.6%)	0 (0.0%)	1 (0.5%)	

Values are n (%), unless otherwise specified. * Patients with HPB cancer were not included in the non-malignant disease groups.

Odds of SARS-CoV-2 infection

The risk analyses showed a greater odds of COVID-19 for men, the Black community, and those with moderate to severe liver disease (figure 2). Patients with chronic pancreatic and mild liver conditions were also associated with a higher odds of infection (OR 1.89, 95% CI 1.25 to 2.85, P=0.007; 1.52, 1.07 to 2.15, P=0.039); however, post-hoc adjustment for comorbidities returned a reduced non-significant positive odds (1.57, 1.04 to 2.38, P=0.084; 1.32, 0.93 to 1.88, P=0.237), with diabetes principally responsible for this reduction (supplemental table 4). The similar association was observed for elderly patients (over 70) with underlying multimorbidity

as confounding factor. Patients with pre-existing renal conditions had the highest odds of COVID-19 (2.93, 2.2 to 3.89, $P < 0.001$), followed by a more than two-fold increased odds for patients with hypertension, diabetes, cardiovascular or chronic respiratory disease (figure 2). However, the independent effects of hypertension and high cholesterol were absent when controlled for other comorbidities (supplemental table 4).

Substance mis-users had higher odds of infection, but the higher odds observed for those with history of smoking or obesity were due to underlying comorbidities. Patients on Vitamin D treatment and past users of ACE inhibitors were associated with higher odds of infection. The slightly reduced yet significantly high odds remained after controlling for comorbidities, with renal (for Vitamin D users) and cardiovascular (for ACE inhibitor users) diseases being the principal source of the reduced estimates (supplemental table 4). Higher odds were also observed for users of proton pump inhibitors, glucocorticoid, β -blockers, β 2-agonists, aldosterone antagonist, muscarinic antagonist, antiplatelet, antiarrhythmic, and statin compared to the non-users of these respective drugs; however, post-hoc adjustment for comorbidities returned non-significant positive odds for those.

<<Figure 2 here>>

Figure 2 Odds ratio estimates of COVID-19 for HPB patients with specific demographic, comorbidity, lifestyle and medication use characteristics. Odds ratio estimates for demographic characteristics are mutually controlled for each other, i.e., gender, ethnicity, and age group. Estimates for HPB disease subgroups are further controlled for each other. For comorbidity, lifestyle and medication use characteristics, estimates are controlled for gender, ethnicity, and dichotomous age group (under and over 60).

A small number of factors appeared to modify the association between HPB disease subgroups and risk of COVID-19 infection (supplemental table 6). In patients with mild liver disease, the odds of COVID-19 infection doubled for chronic pancreatic disease patients compared to patients with no pancreatic condition (P value for heterogeneity, P -het, by liver disease=0.02). A history of substance-misuse was associated with significantly higher odds of infection, particularly for patients with chronic biliary conditions (P -het by biliary disease=0.03), and mild liver conditions (P -het by liver disease=0.04).

Odds of COVID-19 related death

The risk analyses showed an increased odds of COVID-19 related death for men, individuals from the Black community and patients who had acute respiratory complications during admitted care without a history of long-standing respiratory problems (figure 3). Increased odds of death were also observed for the glucocorticoid and β 2-agonists. No HPB disease subgroups were particularly more vulnerable to COVID-related death, although patients with chronic pancreatic condition showed a trend towards significance. Elderly patients (over 70), and recent users of ACE inhibitors and non-steroidal anti-inflammatory drugs were associated with a higher odds of death; however, post-hoc adjustment for comorbidities returned a non-significant positive odds for these risk factors (supplemental table 6).

Stratified analyses according to HPB disease subtypes did not reveal any meaningful effect modification, principally due to small EL-HPB-COVID sample size (data not shown).

<<Figure 3 here>>

Figure 3 Odds ratio estimates of COVID-19 related death for HPB patients with specific demographic, comorbidity, lifestyle, medication use and post COVID-19 diagnosis complication characteristics. Odds ratio estimates for demographic characteristics are mutually controlled for each other, i.e., gender, ethnicity, and age group. Estimates for HPB disease subgroups are further controlled for each other. For comorbidity, lifestyle, medication use and post diagnosis complication characteristics, estimates are controlled for gender, ethnicity, and dichotomous age group (under and over 60). Categories with odds ratio $P > 0.95$ are not shown.

DISCUSSION

We present, for the first time, data on a large, single-centre, multi-ethnic cohort of HPB patients, where primary, secondary and tertiary care EHRs were integrated to investigate the incidence and outcome of COVID-19, to demonstrate how key demographic characteristics and a range of comorbidities, lifestyle factors and medications are associated with SARS-CoV-2 infection and outcomes in HPB patients.

Comparison with other studies

We noted a higher odds of COVID-19 in patients with prior pancreatic and liver conditions. The higher odds associated with liver conditions is consistent with earlier findings.^{6 19} Patients with moderate to severe liver conditions had higher susceptibility to SARS-CoV2 infection than those with milder conditions, which could be due to the increase in abnormalities of immune function with severity of this disease group³². We speculate that reduced pancreatic function, particularly in individuals with chronic pancreatic conditions, leading to altered digestion, and therefore gut flora, may make patients more susceptible to pathogens with an enteric route of SARS-CoV2 infection^{33 34}, and also contribute to the magnitude of COVID-19 severity via modulating host immune responses³⁵. Surprisingly the most vulnerable patients with cancer had a low COVID-19 incidence rate, which may reflect the effectiveness of public health interventions such as shielding.³⁶ However, at the same time, we noted a 17% death rate in this cohort (not due to COVID-19) in six months (supplemental table 3), perhaps indicating the unintended, but potentially inevitable, negative sequelae of social distancing and reduced healthcare provisions for this group of patients as resources were diverted to COVID-19 affected patients.

Men had a higher odds of infection and mortality than women, which is consistent with previous reports,^{1 14} and could be due to a favourable genetic predisposition to the virus,³⁷ and/or gender differences in risk behaviours. Our study also affirms older age, particularly over 70, as an established risk factor for COVID-19 incidence and mortality,^{2 4 5} however, this can be largely explained by the presence of multiple comorbidities in the older age groups.³⁸

COVID-19 statistics have highlighted a disproportionate effect on BAME ethnic groups with an increased risk of infection and poor outcomes.¹³⁻¹⁵ Our results confirm that people from Black community are at a higher risk of both COVID-19 infection and related mortality compared to the White ethnic group. Only a small part of the excess risk in the Black community is explained by multiple comorbidities. Therefore, further variables such as deprivation, occupational exposure, and living conditions might be useful to explore as potential factors behind the apparent vulnerability of the Black population to COVID-19.

All comorbidities such as diabetes, hypertension, high cholesterol, cardiovascular disease, kidney, and respiratory disease, were independently associated with an increased risk of COVID-19, whereas the presence of cardiovascular disease contributed to an added risk of death, concurring with previously reported cohort studies.^{4-6 11} Interestingly, our results highlight that for patients without underlying respiratory issues, an acute respiratory episode due to SARS-CoV-2 infection could

be indicative of a worse outcome. This is in line with previous reports describing an unexpectedly lower prevalence of chronic respiratory conditions among those who had been admitted to hospital due to COVID-19;^{39 40} whereas severe outcomes are often a result of respiratory complications,^{41 42} such as acute respiratory distress syndrome (ARDS) and respiratory failure.

Smoking leads to severe health consequences, which explains the greater risk observed in our cohort of past smokers with high prevalence of respiratory and cardiovascular diseases. However, current smoking status appeared to have a protective effect in our cohort after adjusting for comorbidities, as has been observed by others, an aspect which cannot be mechanistically explained.^{5 43} Carefully designed analyses are needed to explore the association and causality between smoking status (both current and past), associated comorbidities and COVID-19.

Although substance mis-use leads to a plethora of cardio-respiratory and metabolic problems, its role in COVID-19 remains unexplored. To date, this is the first study providing a concrete measure of the risk of COVID-19 for substance mis-users. Our initial results showing that substance mis-users are at a heightened risk for COVID-19 irrespective of the comorbidities warrants a strong case for considering it as an independent risk factor for COVID-19, and may be related to high-risk behavioural patterns.^{44 45}

Previous studies have found a significant relationship between obesity and an increased risk of COVID-19,⁷ and subsequent hospitalisation,⁴⁶ advanced levels of treatment,¹⁵ and death.^{4 6} However, our study does not suggest any particular effect of obesity on COVID-19 for patients with HPB conditions, who have a higher prevalence rate of obesity compared to the UK general population (38.8% vs 26%).⁴⁷ Our study suggest that the difference in effects for potential susceptibility to COVID-19 for patients with history of obesity are attributed more to other prevalent factors – such as cardiovascular or chronic renal disease^{47 48} – which in turn might be the consequences of obesity in these patients' lifetime.

Concerns have been raised regarding the use of various medications with respect to the risk of COVID-19 and the subsequent outcome; and, our analyses contribute to that discussion for some of the widely used prescription drugs. The higher odds observed for the history of various prescription drugs use are consistent with the management of underlying prevalent comorbidities of the study cohort: cardiovascular conditions (ACE inhibitor, β -blocker, aldosterone antagonists, antiplatelet, antiarrhythmic), cholesterol (statin), chronic respiratory diseases (glucocorticoid, β 2-agonists, muscarinic antagonist), or background HPB condition (proton pump inhibitor). An important finding from our study is the significant risk observed for vitamin D users, supportive of the possible association between development of COVID-19 and vitamin D deficiency,^{49 50} or specific medical conditions (such as kidney failure) where Vitamin D prescription is prevalent. Given that BAME communities are observed to be at a high risk of COVID-19, and there is evidence that vitamin D deficiency is particularly common in these ethnic groups,^{49 50} further research on the relationship between vitamin D and COVID-19 is required, with a need to exclude confounding factors such as patients' vitamin D level. Our result also suggest that patients currently taking PPIs are more susceptible to SARS-CoV-2 infection, which concurs with a large population-based online survey conducted in the US.⁵¹ The use of PPIs is highly prevalent in HPB patients for the

management of gastrointestinal acid-related disorders, and the finding here supports the hypothesis that current use of PPIs might influence the susceptibility to SARS-CoV-2 infection in the gastrointestinal tract through reduction of stomach acid.^{51 52}

The literature is conflicted on the potential impact of antihypertensive drugs on COVID-19, particularly those that act as inhibitors to the renin–angiotensin–aldosterone system (RAAS) and upregulate ACE2 expression, suggesting these drugs may be potential risk factors for infection,^{53 54} but also as having a protective effect on outcome.⁵⁵ However, recent studies found no underlying association between the use of different classes of antihypertensive drugs and the risk of developing COVID-19.¹⁶ With a high percentage of patients with hypertension in the study cohort, our finding that a high risk of COVID-19 is associated with past intake of ACE inhibitors or aldosterone agonists is suggestive of the potential risk of switching from one class of antihypertensive drug to another. This contributes to the debate of whether discontinuation of RAAS inhibitors and considering alternative antihypertensive therapy in times of COVID-19 would be a good practice or not.⁵⁶ A marginal association of current use of ACE inhibitors with COVID-19 related death suggests that any increased risk of mortality is likely to be small and will need to be scrutinised in future as more data accumulates.

Our study also shows that recent users of anti-inflammatory drugs, namely glucocorticoid and β 2-agonists, had increased odds for COVID-19 and subsequent poor outcome. Controlling for comorbidities resulted in non-significant odds of infection for these patient subgroups, indicating underlying medical conditions - particularly those of respiratory system - to be responsible for the increased susceptibility. However, the observed harmful associations between these drugs and COVID-19-related death could not be explained by a simplified binary representation of underlying six common health conditions. Glucocorticoid drugs, for instance, are used to treat many other inflammatory conditions, notably inflammatory bowel disease (IBD), whereas HPB diseases constitute some of the most common extraintestinal manifestations of IBD. It has been shown that use of corticosteroids is associated with adverse COVID-19 outcomes among patients with IBD.¹⁷ Had it been possible to successfully control for differences in respiratory disease severity or other medical comorbidities, we speculate to see different and possibly non-significant odds of death in these patient subgroups.

Strengths and limitations of the study

A key strength of our study is that we have systematically identified the effect, or the lack of it, of individual demographic and clinical factors on the infection and mortality of COVID-19 in a cohort of over 15000 patients, robustly corrected for potential confounders in their evaluation. Our large population is highly representative of HPB patients from diverse ethnic groups, which contributes to the generalisability of our findings. Another strength is our use of linked electronic health records, harmonised for variations in coding that exist between different EHR systems. We ascertained patient demographics, lifestyle, comorbidities and medications by linking hospital records with pseudo-anonymized longitudinal primary care records, which substantially enrich the data that are recorded on hospital visits.

Retrospective EHR-based COVID-19 studies often suffer from incomplete or missing data on patient characteristics, including key variables such as BMI, ethnicity,

smoking or pre-existing comorbidities.^{4 58} The missing data is particularly applicable to otherwise healthy COVID-19 patients with low use of healthcare services in the past. However, our patient cohort had already been treated or managed at BHNT hospitals at least once, and often referred through primary care, which led to near-complete data for this study, an added advantage of this study. For instance, ethnicity, a common demographic feature, is missing only for 2.8% of cases in our cohort while the rate is significantly higher in other studies (up to 20% of cases).^{4 57} The only variable with missing data frequency over 20% in our study is substance mis-use behaviour (50.4%). This is a unique lifestyle risk variable which is not yet explored - understandably due to a lack of recorded data as people often do not disclose this information to their clinicians,⁵⁸ unless manifested in physical or mental disorders. Yet, the substance mis-use history of over 7600 patients included in this study provide a good indication of the impact of COVID-19 on this under-studied group.

Our study also has some important limitations. One limitation is the risk of residual confounding or confounding by indication due to unmeasured or simplified binary representation of potential confounding variables. For example, the observed association between Vitamin D users and risk of COVID-19 may be different if participants' Vitamin D level/deficiency status had been taken into consideration. Similarly, the observed association between COVID-19 related death and recent use of glucocorticoid or β 2-agonists may reduce or get amplified if respiratory disease severity or other indications for corticosteroid use were considered.

Another critical limitation is associated with the confirmation of East London residency for the study cohort. Patients' addresses (current or historic) are not collected under the umbrella study, which considers patients with HPB conditions (with the exception of cancer) treated or managed at BHNT hospitals as East London residents during the time of their care. The Royal London Hospital hosts one of the largest HPB centres in England, and supports suspected or confirmed HPB cancer patients from nearby geographical areas. As the umbrella study cohort is historic, we acknowledged the probability of people moving away from East London in the meantime. In absence of a patient's current address to confirm their residency at the outset of COVID-19 pandemic in the UK, we relied on an indirect measure to infer residency. We used a strict six-month window preceding the study to identify a patient's interaction with East London GPs or BHNT hospitals. Thus, we believe that any supposed reduction in the cohort size due to unaccounted change of residency within that window should have affected the COVID and non-COVID group in equal proportion, and hence unlikely to alter the findings we report here.

Due to the rarity of the outcome (SARS-CoV-2 infection) in the full HPB cohort, the effects reported in the study could be influenced by the smaller cohort size of COVID-19 cases. We recognise that larger sample sizes of COVID-19 patients are needed to fully understand the effect of SARS-CoV-2 in patients with HPB conditions. Our results are the first step towards this and require validation in similar national and international cohorts.

Conclusions

We believe that the findings from this single-centre study, focusing on patients with a particular medical condition and in an ethnically diverse area, highlight some

considerations that could guide clinical care while we await an effective antiviral strategy for COVID-19. The current findings reinforce our understanding of some of the important risk factors for SARS-CoV-2 infection but with regards to pre-existing HPB conditions, and allows stratification for risk, thereby providing a tool for policy makers to divert prevention as well as treatment to a clearly identified vulnerable population.

ACKNOWLEDGEMENTS

ADU is supported by Health Data Research UK (HDR-UK) to conduct the umbrella study EL-PaC-Epidem, which is funded by the UK Medical Research Council. We gratefully acknowledge support provided by Pancreatic Cancer Research Fund (PCRF), for conducting public-patient engagement activity and facilitating ethical approval for EL-PaC-Epidem. We thank Dr Charles Gutteridge, Chief Clinical Information Officer at Barts Health NHS Trust for his help with the collection of secondary and tertiary care data. We thank Dr Kambiz Boomla, Dr John Robson, Prof Carol Dezateux, and members of the Discovery East London Programme Board, and developers at Learning Health Solutions Ltd for their support in facilitating collection of primary care patient records. Finally, we acknowledge the contribution to the research made by several members of the PCRF Tissue Bank team, Bioinformatics Unit and clinical research fellows at Barts Cancer Institute through insightful medical and scientific discussion.

FOOTNOTES

Contributors: ADU designed the study, and was responsible for undertaking and completing data collection, processing and analysis. HMK and CC oversaw the conduct and management of the study. All the authors contributed to the selection of study variables and interpretation post analysis. ADU wrote the first drafts of the report and all the authors made critical revisions.

Funding: The study is conducted under an umbrella study, focusing on the epidemiology of pancreatic and other hepatobiliary cancers in East London (EL-PaC-Epidem), funded by Medical Research Council UK (Ref: MR/S003835/1) as a UKRI/Rutherford Fellowship to the corresponding author. No additional funding has been received for this study.

Competing interests: All authors declare no competing interests.

Ethics approval: All data utilised for this study were collected and processed under the EL-PaC-Epidem study at Barts Health NHS Trust. The study was approved by the East of England - Essex Research Ethics Committee (19/EE/0163; 17 May 2019) and supported by the NHS Confidentiality Advisory Group for collecting and processing confidential patient information without consent (19/CAG/0219; 17 January 2020).

Data sharing: All statistical data relevant to the study are included in the article or uploaded as supplementary information. Only the corresponding author had full access to all the participants' data in the study. The authors confirm that researchers seeking the completely anonymised final analysis dataset for this work can submit a data request to the corresponding author.

Transparency statement: The corresponding author affirms that the manuscript is an honest, accurate, and transparent account of the study being reported; that no important aspects of the study have been omitted; and that any discrepancies from the study as planned (and, if relevant, registered) have been explained.

Dissemination to participants and related patient and public communities: Key findings will be disseminated in the EL-PaC-Epidem study website as well as in the corresponding author's institute website.

REFERENCES

- 1 World Health Organization. Coronavirus disease (COVID-19): Situation Reports. <https://www.who.int/emergencies/diseases/novel-coronavirus-2019/situation-reports> (accessed July 30, 2020).
- 2 Centers for Disease Control and Prevention. Coronavirus Disease 2019 (COVID-19): People at Increased Risk and Other People Who Need to Take Extra Precautions. <https://www.cdc.gov/coronavirus/2019-ncov/need-extra-precautions/index.html> (accessed August 10, 2020).
- 3 NHS England. Coronavirus (COVID-19): People at Higher Risk from Coronavirus. <https://www.nhs.uk/conditions/coronavirus-covid-19/people-at-higher-risk/whos-at-higher-risk-from-coronavirus/> (accessed July 30, 2020)
- 4 Williamson EJ, Walker AJ, Bhaskaran K, et al. Factors associated with COVID-19-related death using OpenSAFELY. *Nature* 2020; **584** (7821): 430–36.
- 5 Deng G, Yin M, Chen X, Zeng F. Clinical determinants for fatality of 44,672 patients with COVID-19. *Crit Care* 2020; **24**: 179.
- 6 Docherty AB, Harrison EM, Green CA, et al. Features of 20 133 UK patients in hospital with covid-19 using the ISARIC WHO Clinical Characterisation Protocol: prospective observational cohort study. *BMJ* 2020; **369**: m1985.
- 7 Lighter J, Phillips M, Hochman S, et al. Obesity in Patients Younger Than 60 Years Is a Risk Factor for COVID-19 Hospital Admission. *Clin Infect Dis* 2020; **71** (15): 896–7.
- 8 Dai M, Liu D, Liu M, et al. Patients with Cancer Appear More Vulnerable to SARS-CoV-2: A Multicenter Study during the COVID-19 Outbreak. *Cancer Discov* 2020; **10** (6): 783–91.
- 9 Blanco JL, Ambrosioni J, Garcia F, et al. COVID-19 in patients with HIV: clinical case series. *Lancet HIV* 2020; **7** (5): e314–6.
- 10 BMJ Best Practice. Coronavirus disease 2019 (COVID-19) Complications. <https://bestpractice.bmj.com/topics/en-gb/3000168/complications> (accessed July 23, 2020)
- 11 Guan W-J, Liang W-H, Zhao Y, et al. Comorbidity and its impact on 1590 patients with COVID-19 in China: a nationwide analysis. *Eur Respir J* 2020; **55** (5): 2000547.
- 12 Miyara, M. et al. Low incidence of daily active tobacco smoking in patients with symptomatic COVID-19. *Qeios* 2020; doi: 10.32388/WPP19W.3
- 13 Platt L, Warwick R. Are some ethnic groups more vulnerable to COVID-19 than others? Institute for Fiscal Studies, May, 2020; <https://www.ifs.org.uk/inequality/wp-content/uploads/2020/04/Are-some-ethnic-groups-more-vulnerable-to-COVID-19-than-others-V2-IFS-Briefing-Note.pdf> (accessed July 23, 2020)
- 14 Public Health England. Disparities in the risk and outcomes of COVID-19. https://assets.publishing.service.gov.uk/government/uploads/system/uploads/attachment_data/file/889195/disparities_review.pdf August, 2020. (accessed August 14, 2020).
- 15 Intensive Care National Audit and Research Centre. ICNARC report on COVID-19 in critical care. <https://www.icnarc.org/DataServices/Attachments/Download/af7be2d4-bdcd-ea11-9127-00505601089b> July 24, 2020. (accessed August 2, 2020).
- 16 National Institute for Health and Care Excellence. Coronavirus (COVID-19) Rapid Evidence Summaries. <https://www.nice.org.uk/covid-19#rapid-es> (accessed July 16, 2020)

- 17 Brenner EJ, Ungaro RC, Geary RB, et al., Corticosteroids, but not TNF Antagonists, are Associated with Adverse COVID-19 Outcomes in Patients With Inflammatory Bowel Diseases: Results from an International Registry. *Gastroenterology* 2020; **159** (2): 481–91.
- 18 Zhang H, Kang Z, Gong H, et al. Digestive system is a potential route of COVID-19: an analysis of single-cell coexpression pattern of key proteins in viral entry process. *Gut* 2020; **69**: 1010–8.
- 19 Mantovani A, Beatrice G, Dalbeni A. Coronavirus disease 2019 and prevalence of chronic liver disease: A meta-analysis. *Liver Int* 2020; **40**(6): 1316–20.
- 20 Gubatan J, Levitte S, Patel A, et al. Prevalence, risk factors and clinical outcomes of COVID-19 in patients with a history of pancreatitis in Northern California. *Gut* 2020; Published Online: June 3, 2020. doi: 10.1136/gutjnl-2020-321772.
- 21 McNabb-Baltar J, Jin DX, Grover AS, et al. Lipase elevation in patients with COVID-19. *Am J Gastroenterol* 2020; Published Online: Jun 3, 2020. doi: 10.14309/ajg.0000000000000732.
- 22 Hadi A, Werge M, Kristiansen KT, et al. Coronavirus Disease-19 (COVID-19) associated with severe acute pancreatitis: case report on three family members. *Pancreatology* 2020; **20** (4): 665–7.
- 23 Katabathina VS, Flaherty EM, Dasyam AK, et al. "Biliary Diseases with Pancreatic Counterparts": Cross-sectional Imaging Findings. *Radiographics* 2016; **36** (2): 374–92.
- 24 UK Government. Coronavirus cases in the UK: daily updated statistics. <https://www.gov.uk/guidance/coronavirus-covid-19-information-for-the-public> (last accessed August 2, 2020)
- 25 London Datastore. Coronavirus (COVID-19) Cases: Greater London Authority (GLA). <https://data.london.gov.uk/dataset/coronavirus--covid-19--cases> (accessed August 4, 2020)
- 26 Office for National Statistics. Deaths involving COVID-19 by local area and socioeconomic deprivation: deaths occurring between 1 March and 30 June 2020. <https://www.ons.gov.uk/peoplepopulationandcommunity/birthsdeathsandmarriages/deaths/bulletins/deathsinvolvingcovid19bylocalareasanddeprivation/deathsoccurringbetween1marchand30june2020> July 24, 2020. (accessed August 4, 2020)
- 27 Barts Health NHS Trust. <https://www.bartshealth.nhs.uk/about-us> (accessed August 10, 2020)
- 28 London Datastore. Ethnic Groups by Borough. <https://data.london.gov.uk/dataset/ethnic-groups-borough> (accessed August 4, 2020)
- 29 East London Health & Care Partnership. <https://www.eastlondonhcc.nhs.uk/about-us/> (accessed August 4, 2020)
- 30 Public Health England. Technical summary: Public Health England data series on deaths in people with COVID-19. https://assets.publishing.service.gov.uk/government/uploads/system/uploads/attachment_data/file/908781/Technical_Summary_PHE_Data_Series_COVID-19_Deaths_20200812.pdf (accessed February 10, 2021)
- 31 Glasheen WP, Cordier T, Gumpina R, et al. Charlson Comorbidity Index: ICD-9 Update and ICD-10 Translation. *Am Health Drug Benefits* 2019; **12** (4):188-197.
- 32 Leber B, Mayrhauser U, Rybczynski M, et al. Innate immune dysfunction in acute and chronic liver disease. *Wien Klin Wochenschr.* 2009; **121** (23-24): 732-44.
- 33 Thaweerat W. Current evidence on pancreatic involvement in SARS-CoV-2 infection. *Pancreatology* 2020; **20** (5): 1013–4.

- 34 Gou W, Fu Y, Yue L, et al. Gut microbiota may underlie the predisposition of healthy individuals to COVID-19. Preprint at *medRxiv* 25 April 2020; doi: 10.1101/2020.04.22.20076091.
- 35 Yeoh YK, Zuo T, Lui GCY, et al. Gut microbiota composition reflects disease severity and dysfunctional immune responses in patients with COVID-19. *Gut* 2021; Preprint published online: January 11, 2021. doi: 10.1136/gutjnl-2020-323020.
- 36 Public Health England. Guidance on shielding and protecting people who are clinically extremely vulnerable from COVID-19. <https://www.gov.uk/government/publications/guidance-on-shielding-and-protecting-extremely-vulnerable-persons-from-covid-19/guidance-on-shielding-and-protecting-extremely-vulnerable-persons-from-covid-19> (accessed July 16, 2020).
- 37 Gibson WT, Evans DM, An J, Jones SJM. ACE 2 Coding Variants: A Potential X-linked Risk Factor for COVID-19 Disease. Preprint published online: April 14, 2020. doi: <https://doi.org/10.1101/2020.04.05.026633>
- 38 World Health Organization, Europe. Statement – Older people are at highest risk from COVID-19, but all must act to prevent community spread. <https://www.euro.who.int/en/health-topics/health-emergencies/coronavirus-covid-19/statements/statement-older-people-are-at-highest-risk-from-covid-19,-but-all-must-act-to-prevent-community-spread> April 2, 2020. (accessed June 12, 2020)
- 39 Halpin DMG, Faner R, Sibila O, et al. Do chronic respiratory diseases or their treatment affect the risk of SARS-CoV-2 infection? *Lancet Respir Med* 2020; **8** (5): 436-38.
- 40 Piroth L, Cottenet J, Mariet AS, et al. Comparison of the characteristics, morbidity, and mortality of COVID-19 and seasonal influenza: a nationwide, population-based retrospective cohort study. *Lancet Respir Med* 2020; Preprint published online: 17 Dec 2020; doi: 10.1016/s2213-2600(20)30527-0.
- 41 Tanne JH. Covid 19: Patients have many more complications than flu patients, finds US study. *BMJ* 2020; **371**:m4106.
- 42 Schultze A, Walker AJ, MacKenna B, et al. Risk of COVID-19-related death among patients with chronic obstructive pulmonary disease or asthma prescribed inhaled corticosteroids: an observational cohort study using the OpenSAFELY platform. *Lancet Respir Med* 2020; **8** (11): 1106-20.
- 43 Rentsch CT, Kidwai-Khan F, Tate JP, et al. Covid-19 testing, hospital admission, and intensive care among 2,026,227 United States veterans aged 54–75 years. Preprint at *medRxiv* April 14, 2020; doi: <https://doi.org/10.1101/2020.04.09.20059964>.
- 44 Ornell F, Moura HF, Scherer JN, et al. The COVID-19 pandemic and its impact on substance use: Implications for prevention and treatment. *Psychiatry Res* 2020; **289**: 113096.
- 45 Dubey MJ, Ghosh R, Chatterjee S, Biswas P, Chatterjee S, Dubey S. COVID-19 and addiction. *Diabetes Metab Syndr* 2020; **14** (5): 817–23.
- 46 Khawaja AP, Warwick AN, Hysi PG, et al. Associations with COVID-19 hospitalisation amongst 406,793 adults: the UK Biobank prospective cohort study. Preprint at *medRxiv* May 11, 2020; doi: <https://doi.org/10.1101/2020.05.06.20092957>
- 47 Public Health England. Excess Weight and COVID-19: Insights from new evidence https://assets.publishing.service.gov.uk/government/uploads/system/uploads/attachment_data/file/907966/PHE_insight_Excess_weight_and_COVID-19_FINAL.pdf July, 2020 (accessed August 5, 2020)
- 48 Kovesdy CP, Furth SL, Zoccali C. Obesity and Kidney Disease. *Can J Kidney Health Dis* 2017; **4**: 2054358117698669.

- 49 Hastie CE, Mackay DF, Ho F, et al. Vitamin D concentrations and COVID-19 infection in UK Biobank. *Diabetes Metab Syndr* 2020; **14** (4): 561–5.
- 50 Jain A, Chaurasia R, Sengar NS, et al. Analysis of vitamin D level among asymptomatic and critically ill COVID-19 patients and its correlation with inflammatory markers. *Sci Rep.* 2020; **10** (1): 20191.
- 51 Almario CV, Chey WD, Spiegel BMR. Increased risk of COVID-19 among users of proton-pump inhibitors. *Am J Gastroenterol* 2020; Preprint at: [https://journals.lww.com/ajg/Documents/AJG-20-1811_R1\(PUBLISH%20AS%20WEBPART\).pdf](https://journals.lww.com/ajg/Documents/AJG-20-1811_R1(PUBLISH%20AS%20WEBPART).pdf)
- 52 Lee SW, Yeniova AO, Moon SY, et al. Severe clinical outcomes of COVID-19 associated with proton pump inhibitors: a nationwide cohort study with propensity score matching. *Gut* 2020; Preprint Published Online: July 30, 2020. doi: 10.1136/gutjnl-2020-322248.
- 53 O'Mara GJ. Could ACE inhibitors and particularly ARBs increase susceptibility to COVID-19 infection? *BMJ* 2020; **368**: m406.
- 54 Fang L, Karakiulakis G, Roth M. Are patients with hypertension and diabetes mellitus at increased risk for COVID-19 infection? *Lancet Respir Med* 2020; **8** (4): e21.
- 55 Gurwitz D. Angiotensin receptor blockers as tentative SARS-CoV-2 therapeutics. *Drug Dev Res* 2020; **81** (5): 537–40.
- 56 Ciulla MM. Switching to another antihypertensive effective drug when using ACEIs/ARBs to treat arterial hypertension during COVID-19. *Eur Heart J* 2020; **41** (19): 1856.
- 57 Perez-Guzman PN, Daunt A, Mukherjee S, et al. Clinical characteristics and predictors of outcomes of hospitalized patients with COVID-19 in a multi-ethnic London NHS Trust: a retrospective cohort study. *Clin Infect Dis* 2020; Preprint published online: August 7, 2020. doi: 10.1093/cid/ciaa1091.
- 58 McNeely J, Kumar PC, Rieckmann T, et al. Barriers and facilitators affecting the implementation of substance use screening in primary care clinics: a qualitative study of patients, providers, and staff. *Addict Sci Clin Pract* 2020; **13** (1): 8.

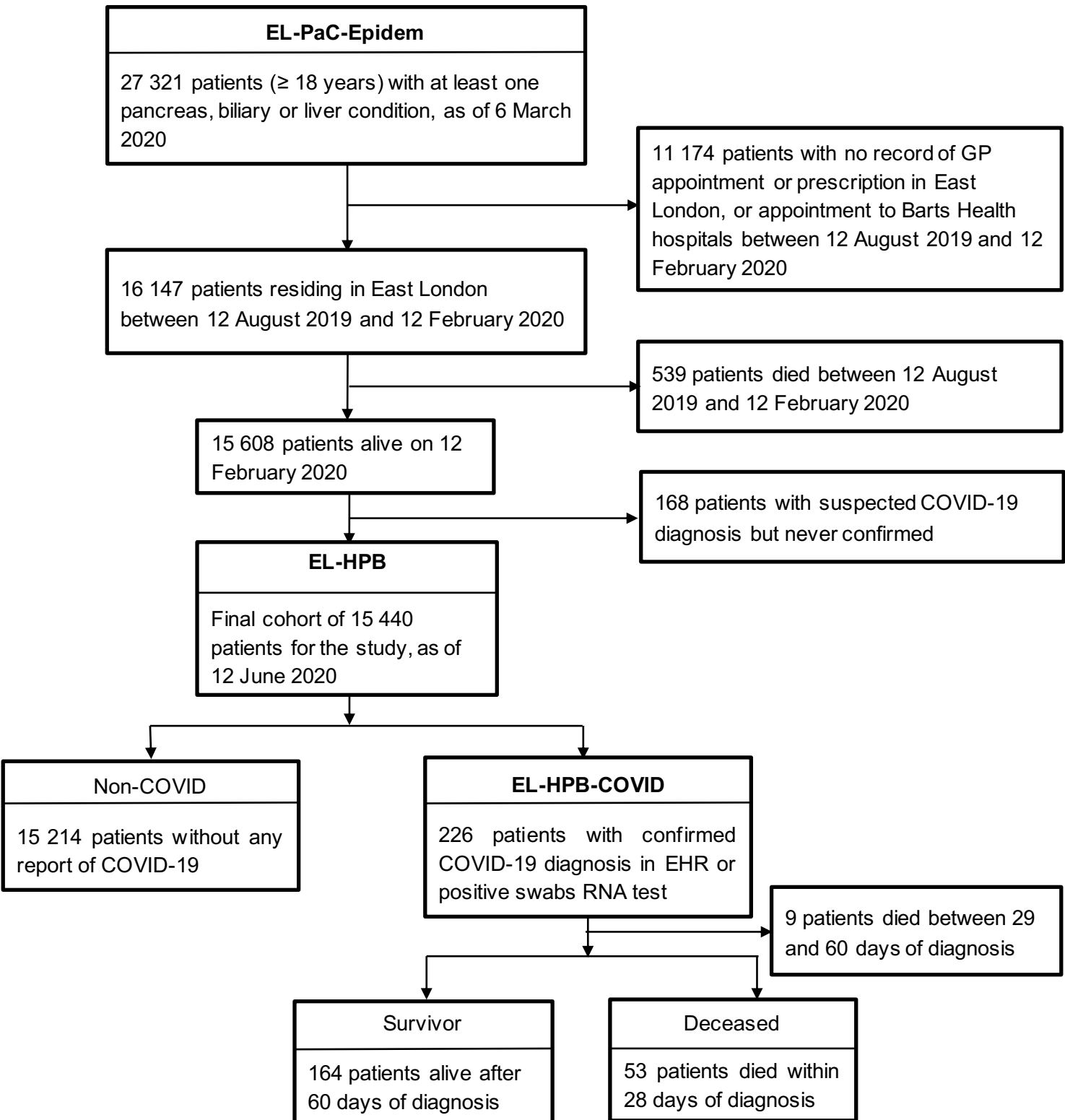
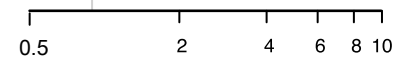


Figure 1 Selection of patients for the cross-sectional study.

	OR	95% CI		P val
Demography				
Gender (ref=Female)				
Male	1.56	1.2 to 2.04		0.002
Ethnicity (ref=White)				
South Asian	1.35	0.98 to 1.85		0.102
Black	2.04	1.39 to 2.95		<0.001
Other	0.87	0.52 to 1.4		0.654
Age group (ref=18-40)				
41-50	1.12	0.64 to 1.98		0.694
51-60	1.19	0.7 to 2.05		0.632
61-70	1.71	1.03 to 2.9		0.075
71-80	2.71	1.63 to 4.6		<0.001
80+	5.21	3.23 to 8.7		<0.001
HPB disease (ref=No)				
Cancer				
Yes	1.11	0.46 to 2.69		0.822
Pancreatic disease				
Acute	1.35	0.82 to 2.22		0.323
Chronic	1.89	1.25 to 2.85		0.007
Biliary disease				
Acute	1.1	0.58 to 2.09		0.822
Chronic	1.05	0.75 to 1.46		0.822
Liver disease				
Mild	1.52	1.07 to 2.15		0.039
Moderate/Severe	2.2	1.35 to 3.59		0.006
Medical History (ref=No)				
Diabetes	2.47	1.85 to 3.32		<0.001
Hypertension	2.35	1.59 to 3.48		<0.001
Cholesterol	1.47	1.09 to 1.98		0.019
Cardiovascular	2.77	2.07 to 3.71		<0.001
Renal	2.93	2.2 to 3.89		<0.001
Respiratory	2.06	1.58 to 2.69		<0.001
Number of comorbidities	1.62	1.46 to 1.79		<0.001
Lifestyle (ref=Never)				
Smoker				
Past	1.46	1.08 to 1.98		0.03
Current	0.65	0.41 to 1.04		0.116
Drinker				
Past	1.26	0.85 to 1.88		0.283
Current	0.81	0.56 to 1.16		0.283
Substance user				
Past	3.43	1.74 to 6.75		<0.001
Current	2.63	1.68 to 4.1		<0.001
Obese				
Past	1.61	1.13 to 2.3		0.016
Current	1.26	0.93 to 1.72		0.187
Prescription medication use (ref=Non-user)				
ACE inhibitor				
Past user	3	1.97 to 4.57		<0.001
Current user	0.8	0.55 to 1.15		0.25
Angiotensin receptor blocker				
Past user	1.18	0.48 to 2.91		0.722
Current user	1.27	0.86 to 1.86		0.293
Aldosterone antagonist				
Past user	3.74	1.86 to 7.5		<0.001
Current user	1.61	0.89 to 2.91		0.151
Beta-blocker				
Past user	1.95	1.07 to 3.56		0.045
Current user	1.62	1.19 to 2.19		0.004
Calcium channel blocker				
Past user	1.5	0.89 to 2.51		0.162
Current user	0.9	0.64 to 1.25		0.533
Antiplatelet				
Past user	1.41	0.73 to 2.71		0.345
Current user	1.84	1.35 to 2.51		<0.001
Antiarrhythmic				
Past user	2.42	1.11 to 5.27		0.039
Current user	1.85	1.15 to 2.97		0.021
Anticoagulant				
Past user	1.96	0.79 to 4.86		0.165
Current user	1.54	0.86 to 2.73		0.165
Glucocorticoid				
Past user	1.39	0.88 to 2.2		0.242
Current user	2.07	1.55 to 2.77		<0.001
Beta2-agonist				
Past user	2.08	1.01 to 4.27		0.071
Current user	2.07	1.48 to 2.9		<0.001
Muscarinic antagonist				
Past user	2.2	1.14 to 4.22		0.027
Current user	1.85	1.3 to 2.64		0.001
NSAID				
Past user	0.81	0.42 to 1.54		0.517
Current user	1.56	0.95 to 2.55		0.139
Vitamin D				
Past user	2.49	1.5 to 4.13		<0.001
Current user	2.5	1.84 to 3.4		<0.001
Proton pump inhibitor				
Past user	1.15	0.66 to 2.01		0.619
Current user	1.78	1.34 to 2.38		<0.001
Statin				
Past user	2.1	1.21 to 3.65		0.013
Current user	1.77	1.3 to 2.4		<0.001
Immunosuppressant				
Past user	1.42	0.58 to 3.51		0.448
Current user	1.7	0.83 to 3.5		0.191

medRxiv preprint doi: <https://doi.org/10.1101/2020.09.07.20189621>; this version posted March 4, 2021. The copyright holder for this preprint (which was not certified by peer review) is the author/funder, who has granted medRxiv a license to display the preprint in perpetuity. All rights reserved. No reuse allowed without permission.



	OR	95% CI		P val
Demography				
Gender (ref=Female)				
Male	3.54	1.68 to 7.85		0.007
Ethnicity (ref=White)				
South Asian	2.08	0.91 to 4.88		0.143
Black	3.77	1.38 to 10.7		0.023
Other	0.29	0.02 to 1.82		0.371
Age group (ref=18-40)				
41-50	2.24	0.19 to 52.1		0.65
51-60	1.92	0.16 to 44.3		0.674
61-70	6.73	1.03 to 134		0.143
71-80	18.6	3.12 to 361		0.022
80+	25.4	4.32 to 491		0.012
HPB disease (ref=No)				
Cancer				
Yes	1.18	0.14 to 10.2		0.951
Pancreatic disease				
Acute	1.52	0.44 to 5.24		0.596
Chronic	3.26	1.13 to 9.44		0.082
Biliary disease				
Acute	2.44	0.38 to 15.9		0.544
Chronic	0.67	0.26 to 1.72		0.568
Liver disease				
Mild	0.51	0.19 to 1.35		0.347
Moderate/Severe	0.6	0.16 to 2.22		0.568
Medical History (ref=No)				
Diabetes	1.88	0.81 to 4.38		0.227
Hypertension	6.3	0.74 to 53.8		0.148
Cholesterol	1.25	0.56 to 2.82		0.67
Cardiovascular	2.82	1.21 to 6.59		0.026
Renal	1.72	0.8 to 3.7		0.248
Respiratory	0.85	0.42 to 1.73		0.743
Lifestyle (ref=Never)				
Smoker				
Past	1.87	0.83 to 4.19		0.219
Current	0.45	0.08 to 2.49		0.451
Drinker				
Past	1.2	0.41 to 3.49		0.847
Current	1.38	0.52 to 3.64		0.736
Substance user				
Past	0.62	0.08 to 4.94		0.81
Current	2.01	0.53 to 7.64		0.436
Obese				
Past	1.46	0.58 to 3.65		0.603
Current	1.03	0.44 to 2.4		0.991
Prescription medication use (ref=Non-user)				
ACE inhibitor				
Current user	2.22	0.88 to 5.73		0.161
Aldosterone antagonist				
Past user	1.29	0.28 to 5.82		0.838
Current user	1.29	0.28 to 5.97		0.838
Beta-blocker				
Past user	0.72	0.16 to 3.24		0.746
Current user	0.66	0.3 to 1.45		0.385
Calcium channel blocker				
Past user	0.16	0.03 to 0.89		0.065
Current user	0.92	0.4 to 2.12		0.948
Antiplatelet				
Past user	0.68	0.12 to 3.7		0.836
Antiarrhythmic				
Past user	0.53	0.06 to 4.82		0.641
Current user	2.12	0.72 to 6.26		0.261
Anticoagulant				
Past user	0.48	0.05 to 4.89		0.691
Current user	1.18	0.32 to 4.39		0.904
Glucocorticoid				
Past user	1.47	0.44 to 4.87		0.599
Current user	2.79	1.26 to 6.22		0.021
Beta2-agonist				
Past user	1.96	0.32 to 12		0.523
Current user	2.72	1.18 to 6.25		0.034
Muscarinic antagonist				
Past user	1.58	0.32 to 7.7		0.739
Current user	1.11	0.45 to 2.76		0.919
NSAID				
Past user	0.58	0.11 to 3.05		0.589
Current user	4.13	1.19 to 14.3		0.045
Vitamin D				
Past user	1.8	0.55 to 5.92		0.376
Current user	1.58	0.7 to 3.53		0.345
Proton pump inhibitor				
Past user	1.46	0.29 to 7.34		0.83
Current user	0.88	0.41 to 1.89		0.83
Statin				
Past user	0.82	0.18 to 3.77		0.902
Current user	1.51	0.62 to 3.66		0.47
Immunosuppressant				
Past user	1.3	0.17 to 10		0.904
Current user	2.44	0.44 to 13.7		0.4
Complications post diagnosis (ref=No)				
Cardiovascular				
Recurrent	2.53	1.04 to 6.12		0.071
Novel	0.44	0.04 to 4.47		0.547
Respiratory				
Recurrent	2.53	0.84 to 7.63		0.15
Novel	5.77	1.75 to 19		0.009
Renal				
Recurrent	1.72	0.66 to 4.46		0.34
Novel	1	0.3 to 3.34		0.997

medRxiv preprint doi: <https://doi.org/10.1101/2020.09.07.20189621>; this version posted March 4, 2021. The copyright holder for this preprint (which was not certified by peer review) is the author/funder, who has granted medRxiv a license to display the preprint in perpetuity. All rights reserved. No reuse allowed without permission.