

## Higher Body Mass Index is an Important Risk factor in COVID-19 patients: A Systematic Review

Vivek Singh Malik<sup>1,2</sup>, Khaiwal Ravindra<sup>1\*</sup>, Savita Verma Attri<sup>2</sup>, Sanjay Kumar Bhadada<sup>3</sup>,  
Meenu Singh<sup>2</sup>

<sup>1</sup>Department of Community Medicine and School of Public Health, Post Graduate Institute of Medical Education and Research (PGIMER), Chandigarh -160012, India

<sup>2</sup>Department of Pediatrics, Post Graduate Institute of Medical Education and Research (PGIMER), Chandigarh -160012, India

<sup>3</sup>Department of Endocrinology, Post Graduate Institute of Medical Education and Research (PGIMER), Chandigarh -160012, India

**Background:** Globally, both obesity and underweight are severe health risks for various diseases. The current study systematically examines the emerging evidence to identify an association between Body Mass Index (BMI) and COVID-19 disease outcome.

**Methods:** Online literature databases (e.g., Google Scholar, PubMed, MEDLINE, EMBASE, Scopus, Medrxiv and BioRxiv) were screened following standard search strategy having the appropriate keyword such as “Obesity”, “Underweight”, “BMI”, “Body Mass Index”, “2019-nCov”, “COVID-19”, “novel coronavirus”, “coronavirus disease”. Studies published till 20<sup>th</sup> April 2020 were included without language restriction. These studies include case reports, case series, cohort, and any other which reported BMI, overweight/obesity or underweight, and its complication with COVID-19 disease.

**Findings:** Obesity plays a significant part in the pathogenesis of COVID-19 patients, though the role of BMI in the COVID-19 pandemic must not be ignored.

**Interpretation:** Consequences of inflammation of adipose tissue has been reported as a leading cause of insulin resistance and hypertension due to metabolic dysfunction. The results of the current study show that BMI plays a significant role in COVID-19 severity in all ages, especially the elderly population. A panel should review COVID-19 patients with higher BMI and other co-morbidities, and they should be given increased vigilance, testing priority, and therapy. Further, the COVID-19 patients whose illness entered 7-10 days, age >50 yrs, and elevated CRP levels should have additional medical considerations.

**Recommendation:** Population and patients with high BMI have moderate to high risk of medical complications with COVID-19, and hence their health status should be monitored more frequently.

**Keywords:** Age, BMI, COVID-19, Obesity.

## **Introduction:**

Being overweight, obese, and underweight may have a major risk factor for multiple disorders in the later stage of life. Earlier studies have shown a relationship between BMI and mortality among diabetic patients (1) mental behavioral, neurological (2) Parkinson's disease (3), weight gain with pneumonia (4). Infection was reduced in weight-reduced patients (5), and thromboembolic risk in obese (6).

**Influence of infection on obesity:** An U-shaped elevated infection rate was seen among overweight/obese and underweight old age persons (7), increased CVD risk with greater malignancy rates (8–10), and obesity with impaired immune responses was seen (11). overweight/obesity was reported as a risk factor for *Clostridium difficile* colitis, pneumonia, bacteremia infections (12,13), and increased surgical site infection (14–20). Similarly, Waist circumference was reported as a better predictor of septicemia risk than BMI (21). In a study, Adipose tissue serves as a source for human influenza A virus, *Trypanosoma gondii*, HIV, adenovirus Ad-36, cytomegalovirus, and mycobacterium tuberculosis (6). The elderly population is reported to be more susceptible to infections (22). Higher mortality risks of influenza was reported among the underweight and obese old population (23).

## **Obesity and Coronavirus Infection:**

In many countries, the obese population is more vulnerable to most of the non-communicable diseases. Further, the COVID-19 pandemic has put this population at higher risk (24). The measures introduced in some countries, e.g., restriction on leaving home for several weeks even for daily-walk, will have an impact on mobility, and these infection control measures resulted in physical inactivity, and even short periods of restriction can increase the risk of metabolic disease in future. Overweight and obesity among severe COVID-19 patients were reported as an

independent risk factor (25). Increased adiposity undermines the pulmonary function contributing the viral pathogenesis as a secondary cause of infection (26) and has been reported as evidence in obese among older (>60 years of age) (27). Following the 2009 influenza A virus H1N1 pandemic (28) and Adult Respiratory Distress Syndrome (ARDS) (29), obesity was reported as a risk factor. Decreased mortality due to ventilator-induced lung injury resulting in chronic pro-inflammatory status in obese patients has been reported (30). Infection of influenza A showed that overweight/obesity risk elevates with virus shedding (42% longer) duration among symptomatic patients with obesity (31). In H<sub>1</sub>N<sub>1</sub> disease, obesity was reported as a risk factor with increased hospitalization and death rates (32). Obesity has been shown to increase vulnerability to infections, serving as a risk factor among COVID-19 patient's mortality rate (33).

**Potential Confounders for obesity and infection risk:** Smoking behavior (4,34), well-being (35), Physical activity (36), weight loss (7), Co-morbidities (37), and nutrition (38) are potential confounders reported independent of age and sex.

## Research in context

**Evidence before this study:** We searched PubMed for and other online databses for reported overweight/obesity or BMI and COVID-19. In case of COVID-19, a toal 14 studies have been reported and included for systematic review, for meta-analysis only 10 studies have been added.

**Added value of this study:** This systematic review and meta-analysis addressing the role of higher BMI among COVID-19 patients. We systematically reviewed PubMed, EMBASE, Medrxiv and BioRxiv) using relevant keywords.

**Implications of all the avialeble evidence:** Population and patient with high BMI has moderate to high risk of medical complication with COVID-19, and hence their health status should be monitored more frequently.

## Methods

**Search Strategy:** PRISMA guideline was used for this meta-analysis (39). **Boolean operators:** (BMI) AND (COVID-19), (Obesity) AND (COVID-19), ((Underweight) AND (COVID-19)) OR (CASRS-Cov-2), (BMI) OR (Body Mass Index) AND (COVID-19) were used for PubMed database and for Google Scholar, MEDLINE, EMBASE, Scopus, Medrxiv and BioRxiv using appropriate keywords (e.g., “Obesity”, “BMI”, “Body Mass Index”, “2019-nCov”, “COVID-19”, “novel coronavirus”, “coronavirus disease”). The study included published literature without language restriction until 20<sup>th</sup> April 2020.

**Selection criteria (Inclusion/exclusion):** Studies with the following conditions had included for the meta-analysis. (1) Case report, case series and cohort studies design (2) BMI assessment  $>25 \text{ kg/m}^2$  and  $<25 \text{ kg/m}^2$  reported (3) indicating the risk ratio and/or odds ratio for the obesity risk (4) studies reporting cross-sectional were excluded (5) age and gender were not kept as a bar for inclusion (6) For meta-analysis we included BMI with reported COVID-19 infections (clinical, laboratory or both confirmed) (7) Definition of severe COVID-19 was taken (40).

**Data extraction:** Details of authors, total sample size, and numbers reported for obesity and other conditions, e.g., comorbidity (obesity) and clinical condition (critical/severe) were extracted and recorded independently. Data extraction was accomplished by two reviewers (Dr. Khaiwal Ravindra & Dr. Neha Chanana). Any disagreement was resolved by joint discussion. To minimize the risk of duplication of data carefully handled. Continuous variable (BMI) was expressed as mean  $\pm$  SD/median and IQR (interquartile range). The systematic include case reports, case series and observational and any other study types of study design which reported obesity and or underweight or its complication of COVID-19 infection. Studies for meta-analysis studies were pooled only if the outcome measured in the same way by all studies.

**Quality assessment:** The Newcastle Ottawa scale for cohort studies was used for quality evaluation of the selected studies (41).

**Statistical analysis and data synthesis:** After extracting the results of the studies, were pooled and the effects of BMI on COVID-19 patients were examined using the random effects method. For continuous outcome standard error (SE) with 95% CI was calculated. The heterogeneity ( $I^2$ )

statistic) was assessed between studies. Higgins and colleagues suggested  $I^2$  values 25% (low), 50% (moderate), and 75% (high) indicating the existence of heterogeneity (42) (43,44). Data analysis was undertaken using Microsoft Excel (45).

## Results:

**Literature search:** Literature searching and screening was done according to PRISMA chart, as shown in figure 1 (supplementary). Initially, 3405 published research articles were identified through a database search. After the removal of 3368 publications due to duplicates and not relevant to study criteria, only 37 research papers were taken for the full-text paper. Finally, 14 articles met the inclusion criteria were included in the quantitative synthesis of the current systematic review.

**Study characteristics:** The main characteristics were summarized in table 1(supplementary). All published research papers fall under observational (cohort) study design. Most of the studies are from China, the USA, and France. The study included articles published/available online till 20<sup>th</sup> April 2020. About the obesity criteria, BMI >25 kg/m<sup>2</sup> was considered as also described in selected studies.

**Quality assessment:** The Newcastle Ottawa Scale (for cohort studies) was used for the qualitative evaluation of the included studies (41). The risk of bias was assessed based on three domains, i.e., selection, comparability, and outcome, as highlighted in Table 3 (supplementary).

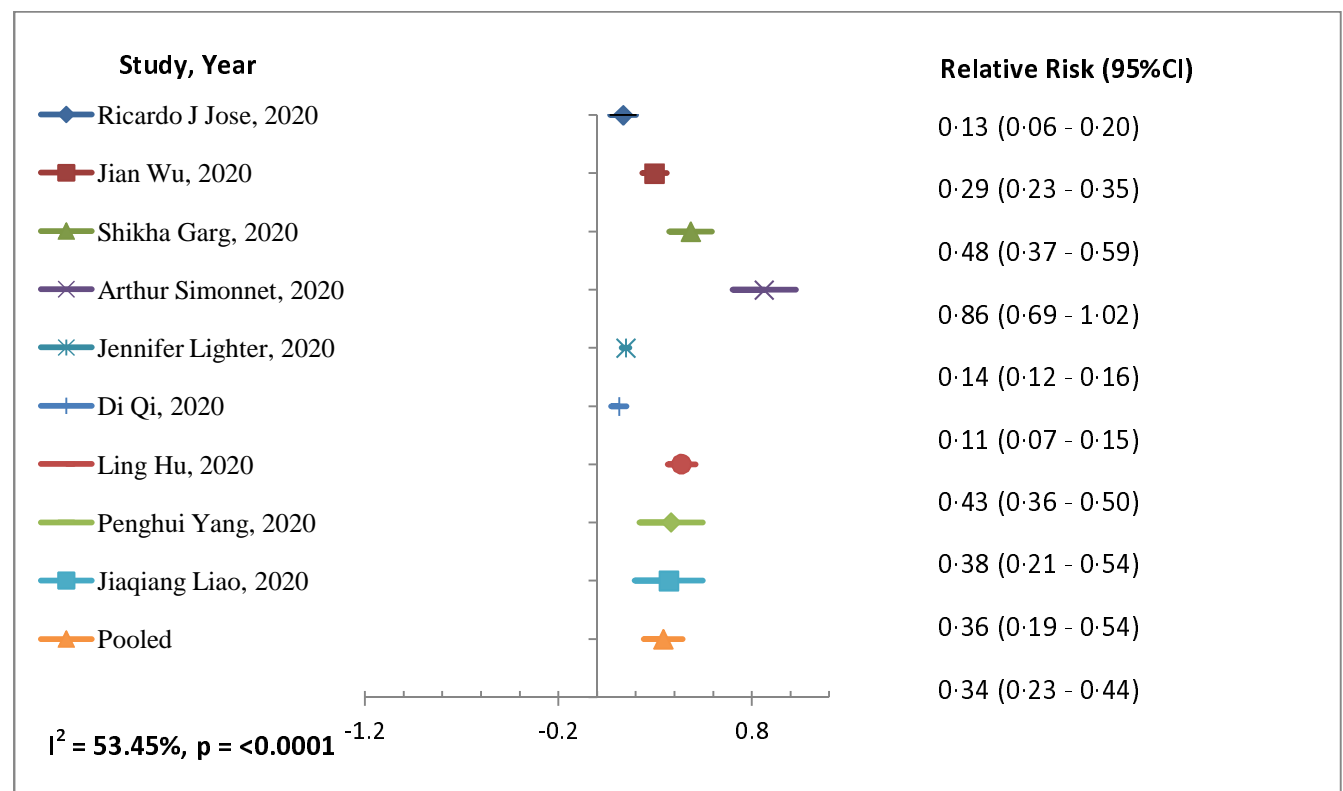
**Publication bias:** This study includes published studies, as well as unpublished literature on MedRxiv and BioRxiv, as long as it meets study inclusion criteria. Possible publication bias was not calculated due to the limited power among studies, and the outcome was <10 for funnel plot (46).

**Meta-analysis:** The outcomes of the meta-analysis (Table 2) and forest-plot (Figure 3) are shown. A random-effects model ( $I^2 = 53.45\%$ ) was used on 9 articles for those reported  $\geq 25$  BMI kg/m<sup>2</sup> for COVID-19 infection. involving 689 patients to analyse the risk factors of  $\geq 25$  BMI kg/m<sup>2</sup> [RR, 95%CI: 0.34 (0.23-0.44)] for patients with COVID-19 than those of having <25 BMI kg/m<sup>2</sup> (RR, 95%CI: 0.60 (0.34-0.86)] with random-effect model ( $I^2 = 0\%$ ). BMI <25 kg/m<sup>2</sup> random

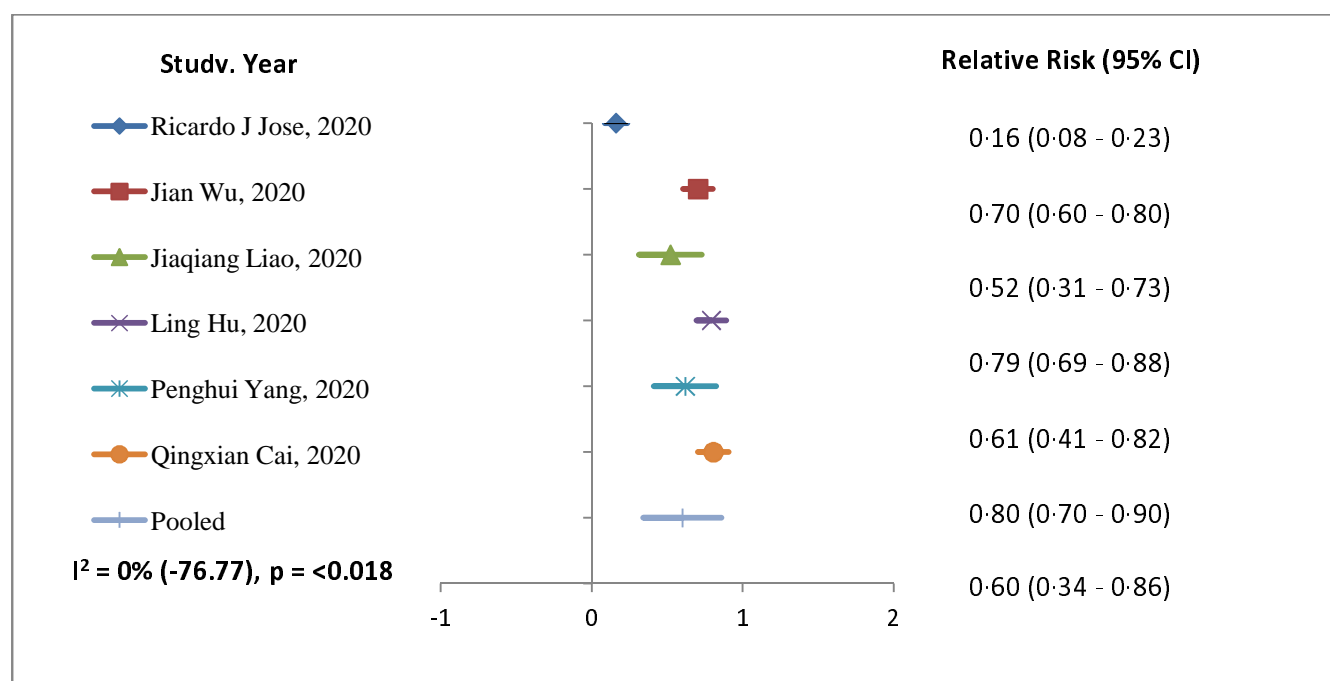
effect-models  $I^2$  were negative, which indicates no observed heterogeneity for this group (47), (48).

**Table 2: The meta-analysis of Body Mass Index for COVID-19 Patient's**

Risk factor	Variable	Number of studies	Size (n)	Risk ratio (95%CI)	$I^2$
<b>Body Mass Index</b>					
<25 kg/m <sup>2</sup>	Continuous	6	769	0.60 (0.34 – 0.86)	0% (-76.77)
>25 kg/m <sup>2</sup>	Continuous	9	689	0.34 (0.23 – 0.44)	53.45%



**Figure 2: Forest plot of risk factor BMI >25 kg/m<sup>2</sup> with COVID-19 patient's**



**Figure 3: Forest plot of risk factor BMI <25 kg/m<sup>2</sup> with COVID-19 patient's**

## Discussion:

There is geographical variation in fatality case rates in South Korea (0.8), China (2.3), and Italy (7.2) has been reported (49) with risk factors of smoking, pollution, and aging. In US patients <60 years were 2 (95%CI: 1.6 – 2.6) and with BMI 30-40 (OR (95%CI)1.8: 1.2 – 2.7) more likely to be admitted to acute and critical care to individuals with a BMI <30 (50) has been reported for the first time. In a study, gender (male), age, and heart disease were the main risk factors of COVID-19 related death (51). Adolescents and young adults might play a key role in the worldwide spread of COVID-19 disease because they study overseas and frequently travel (52). Meta-analysis showed elderly male patients with high BMI have greater chances of being into critically ill patients category (53).

**Limitations:** Though there are limitation in the current systematic review and meta-analysis. Population, continuous variable, clinical condition, and statistical methods have the potency to differ and may cause heterogeneity among studies included for the meta-analysis. Further, the

study reviewed only the risk of BMI ( $>25 \text{ kg/m}^2$  and  $<25 \text{ kg/m}^2$ ) of COVID-19 subjects and their severity.

**Study Importance:** This is the first study with a large number of studies, linking BMI a critical risk factor for COVID-19 infection and severity. Hence, while treating, COVID-19 patients with higher BMI should be given special medical consideration as they also have other comorbidities.

**Implications of our study:** This is the first meta-analysis to give an account of the higher BMI and COVID-19 infection.

**Conclusion:** The BMI play aa significant role in COVID-19 infection and severity in all ages, especially elderly a population. COVID-19 patients with higher BMI should be reviewed by a panel for the risk factors. Further, there should be a procedure for increased vigilance, testing a priority, and therapy for patients with obesity and COVID-19 disease whose illness has entered 7-10 days, having age  $>50$  yrs, and elevated CRP levels. The severity of COVID-19 has to be found a significant burden on intensive care resources in hospitals worldwide and specifically in lower-and-middle income countries due to lack of health finance and resources. Hence, patients with higher BMI with other comorbidities should be given special consideration to avoid the severity of the disease and morbidity.

**Acknowledgment:** We thank the Department of Community Medicine & School Public Health and Indian Council of Medical Research, New Delhi. We also thanks Dr. Neha Chanana for doing an independent review of studies included in the current systematic review and meta-analysis.

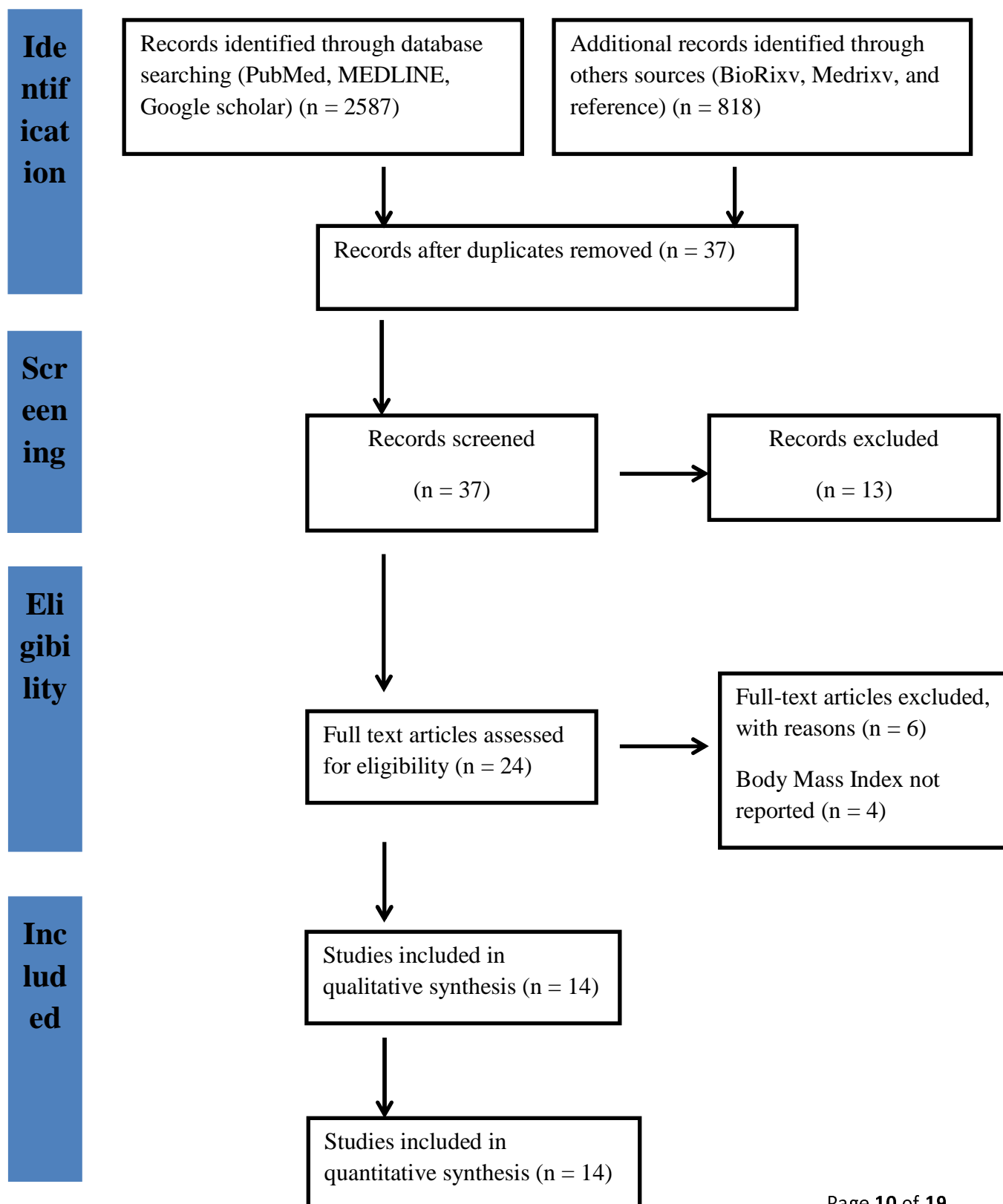
**Conflict of Interest:** None

**Funding/Support:** None

**Table 1: Patient/study characteristics**

Author (Ref. No.)	Country	Study type	Numbers or %	Clinical Condition (COVID-19)	BMI (kg/m <sup>2</sup> ) (mean $\pm$ SD/ median (IQR))	Outcome
Ricardo J Jose, et al.(25)	China, Wuhan	Editorial/ Retrospective	N = 112 (T) N = 15 N = 18	ICU General	25.5 (23.0 – 27.5) 22.0 (20.0 – 24.0)	BMI $\uparrow$ among ICU and non-survivor group
Jian Wu, et. al, (54)	China	Retrospective	N = 280 (T) N = 83 N = 197	Severe Mild	25.8 $\pm$ 1.8 23.6 $\pm$ 3.2	BMI $\uparrow$ among severe COVID-19 group
Li M, et. al., (55)	China	Retrospective	N = 30 (T)	Critical General	27.0 $\pm$ 2.5 22.0 $\pm$ 1.3	BMI $\uparrow$ among critical COVID-19 group
Shikha Garg, et. al., (56)	USA	COVID-NET	N = 151 (T) N = 73		$\geq 30$ kg/m <sup>2</sup>	BMI $\uparrow$ Hospitalization rate $\uparrow$ with age and older adults.
Arthur Simonnet, et. al., (57)	France	Retrospective	N = 124 N = 107		$>30$ kg/m <sup>2</sup>	BMI $\uparrow$ Invasive Mechanical Ventilation (IMV) requirement $\uparrow$
Jennifer Lighter, et. al., (58)	USA	Retrospective	N = 1370 (T) N = 202		$>30$ kg/m <sup>2</sup>	Significant difference in admission and ICU care only in patients $<60$ years of age with varying BMIs.
Ao-Xiang Guo, et. al. (59)	China	Retrospective	N = 159 N = 02		$>25$ kg/m <sup>2</sup>	Most death among elder adults and 1.65 fold higher in male than female.
Jiaqiang Liao, et. al.,(60)	China	Retrospective	N = 46 (T) N = 17 N = 24		BMI $\geq 25$ BMI $<25$	Adolescent and young adult had long COVID-19 incubation period
Di Qi, et, al., (61)	China, Chongqing	Retrospective	N = 267 N = 30 (11.2%)		BMI $>25$	Severe were older (71.5 yrs) and overweight/obese 14 (28%)
Ling Hu, et. al., (62)	China, Wuhan	Retrospective	N = 323 (T) N = 141 N = 256	Sever Non-severe	$\geq 25$ $<25$	
Penghui Yang, et. al.,(63)	China	Retrospective	N = 55 (T) N = 21 N = 34	Without Pneumonia With pneumonia	24.85(22.86– 26.79) 26.12(22.86– 27.68) 24.54(22.89– 26.27)	
Qingxian Cai, et. al., (64)	China	Retrospective	N = 298 (T) N = 240 N = 58	Non-severe Severe	23.2 (21.1–25.6) 22.9 (20.6–25.2) 24.5 (22.0 – 27.8)	BMI $\uparrow$ among Elder
Lizhen Xu, et. al., (40)	China	Meta-analysis	N = 79			WMD 3.38 (0.07-6.69), $I^2 = 67.20\%$
Christopher M. Petrilli, et. al., (65)	USA	Cross-Sectional	N = 4103 (T) N = 2104 N = 1999	Not-hospitalized Hospitalized	BMI 30 - 40 BMI 30 - 40	High BMI had higher hospitalization rate OR 6.2 (4.21-9.25)

**Figure 1: PRISMA Chart**



**Table 3: Quality assessment: Cohort study Quality according to Newcastle-Ottawa Scale.**

S.No.	Selection*****				Comparability**	Outcome*****			Total quality score
	1	2	3	4	5	6	7	8	
Ricardo J Jose, et al.(25)	*	0	*	0	0	**	0	0	3
Jian Wu, et. al, (54)	*	0	*	0	*	**	0	0	4
Shikha Garg, et. al., (56)	*	0	*	0	0	**	0	0	3
Arthur Simonnet, et. al., (57)	*	0	*	*	*	**	0	0	5
Jennifer Lighter, et. al., (58)	*	0	*	*	0	**	0	0	4
Jiaqiang Liao, et. al.,(60)	*	0	*	*	0	0	0	0	3
Di Qi, et, al., (61)	*	0	*	0	0	**	*	0	4
Ling Hu, et. al., (62)	*	0	*	0	*	**	0	0	4
Penghui Yang, et. al.,(63)	*	0	*	0	*	**	*	0	5
Qingxian Cai, et. al., (64)	*	0	*	0	*	**	0	0	4

**Note: Selection;** 1) Representativeness of the exposed cohort, 2) Selection of the non-exposed cohort, 3) Ascertain exposure, 4) Demonstration that outcome of interest was not resented at start of study; **Comparability;** 5) Comparability of cohorts on the basis of the design or analysis controlled for confounders; **Outcome:** 6) Assessment of outcome, 7) Was follow-up long enough for outcomes to occur, 8) Adequacy of follow-up of cohorts.

## References:

1. Chang H-W, Li Y-H, Hsieh C-H, Liu P-Y, Lin G-M. Association of body mass index with all-cause mortality in patients with diabetes: a systemic review and meta-analysis. *Cardiovasc Diagn Ther.* 2016 Apr;6(2):109–19.
2. Bhaskaran K, dos-Santos-Silva I, Leon DA, Douglas IJ, Smeeth L. Association of BMI with overall and cause-specific mortality: a population-based cohort study of 3·6 million adults in the UK. *Lancet Diabetes Endocrinol.* 2018 Dec;6(12):944–53.
3. Chen J, Guan Z, Wang L, Song G, Ma B, Wang Y. Meta-Analysis: Overweight, Obesity, and Parkinson's Disease. *Int J Endocrinol.* 2014;2014:1–7.
4. Baik I, Curhan GC, Rimm EB, Bendich A, Willett WC, Fawzi WW. A Prospective Study of Age and Lifestyle Factors in Relation to Community-Acquired Pneumonia in US Men and Women. *Arch Intern Med.* 2000 Nov 13;160(20):3082.
5. Anderin C, Gustafsson UO, Heijbel N, Thorell A. Weight Loss Before Bariatric Surgery and Postoperative Complications: Data From the Scandinavian Obesity Registry (SOReg). *Ann Surg.* 2015 May;261(5):909–13.
6. Kassir R. Risk of COVID-19 for patients with obesity. *Obes Rev* [Internet]. 2020 Apr 13 [cited 2020 Apr 29]; Available from: <http://doi.wiley.com/10.1111/obr.13034>
7. Dobner J, Kaser S. Body mass index and the risk of infection - from underweight to obesity. *Clin Microbiol Infect.* 2018 Jan;24(1):24–8.
8. Gluvic Z, Zaric B, Resanovic I, Obradovic M, Mitrovic A, Radak D, et al. Link between Metabolic Syndrome and Insulin Resistance. *Curr Vasc Pharmacol.* 2016 Nov 14;15(1):30–9.
9. Tune JD, Goodwill AG, Sassoon DJ, Mather KJ. Cardiovascular consequences of metabolic syndrome. *Transl Res.* 2017 May;183:57–70.

10. Vucenik I, Stains JP. Obesity and cancer risk: evidence, mechanisms, and recommendations: Obesity and cancer. *Ann N Y Acad Sci.* 2012 Oct;1271(1):37–43.
11. Carbone F, La Rocca C, De Candia P, Procaccini C, Colamatteo A, Micillo T, et al. Metabolic control of immune tolerance in health and autoimmunity. *Semin Immunol.* 2016 Oct;28(5):491–504.
12. Huttunen R, Karppelin M, Syrj nen J. Obesity and nosocomial infections. *J Hosp Infect.* 2013 Sep;85(1):8–16.
13. Falagas ME, Kompoti M. Obesity and infection. *Lancet Infect Dis.* 2006 Jul;6(7):438–46.
14. Zahr F, Genovese E, Mathier M, Shullo M, Lockard K, Zomak R, et al. Obese Patients and Mechanical Circulatory Support: Weight Loss, Adverse Events, and Outcomes. *Ann Thorac Surg.* 2011 Oct;92(4):1420–6.
15. Lillienfeld DE, Vlahov D, Tenney JH, McLaughlin JS. Obesity and diabetes as risk factors for postoperative wound infections after cardiac surgery. *Am J Infect Control.* 1988 Feb;16(1):3–6.
16. Crabtree TD, Codd JE, Fraser VJ, Bailey MS, Olsen MA, Damiano RJ. Multivariate analysis of risk factors for deep and superficial sternal infection after coronary artery bypass grafting at a tertiary care medical center. *Semin Thorac Cardiovasc Surg.* 2004 Mar;16(1):53–61.
17. Tjeertes EEKM, Hoeks SSE, Beks SSBJC, Valentijn TTM, Hoofwijk AAGM, Stolker RJRJ. Obesity – a risk factor for postoperative complications in general surgery? *BMC Anesthesiol.* 2015 Dec;15(1):112.
18. Vilar-Compte D, Mohar A, Sandoval S, de la Rosa M, Gordillo P, Volkow P. Surgical site infections at the National Cancer Institute in Mexico: A case-control study. *Am J Infect Control.* 2000 Feb;28(1):14–20.

19. Thelwall S, Harrington P, Sheridan E, Lamagni T. Impact of obesity on the risk of wound infection following surgery: results from a nationwide prospective multicentre cohort study in England. *Clin Microbiol Infect.* 2015 Nov;21(11):1008.e1-1008.e8.
20. Olsen MA, Mayfield J, Lauryssen C, Polish LB, Jones M, Vest J, et al. Risk factors for surgical site infection in spinal surgery. *J Neurosurg.* 2003 Mar;98(2 Suppl):149–55.
21. Wang HE, Griffin R, Judd S, Shapiro NI, Safford MM. Obesity and risk of sepsis: A population-based cohort study: Obesity and Risk of Sepsis. *Obesity.* 2013 Dec;21(12):E762–9.
22. Dorner TE, Schwarz F, Kranz A, Freidl W, Rieder A, Gisinger C. Body mass index and the risk of infections in institutionalised geriatric patients. *Br J Nutr.* 2010 Jun 28;103(12):1830–5.
23. Yang L, Chan KP, Lee RS, Chan WM, Lai HK, Thach TQ, et al. Obesity and influenza associated mortality: Evidence from an elderly cohort in Hong Kong. *Prev Med.* 2013 Feb;56(2):118–23.
24. Dayal D. COVID-19: Considerations for Children and Adolescents with Diabetes [Internet]. *MEDICINE & PHARMACOLOGY*; 2020 Apr [cited 2020 May 5]. Available from: <https://www.preprints.org/manuscript/202004.0225/v1>
25. Jose RJ, Manuel A. Does COVID-19 Disprove the Obesity Paradox in ARDS? *Obesity* [Internet]. 2020 Apr 15 [cited 2020 May 2]; Available from: <http://doi.wiley.com/10.1002/oby.22835>
26. Dorner TE, Schwarz F, Kranz A, Freidl W, Rieder A, Gisinger C. Body mass index and the risk of infections in institutionalised geriatric patients. *Br J Nutr.* 2010 Jun 28;103(12):1830–5.
27. Andersen CJ, Murphy KE, Fernandez ML. Impact of Obesity and Metabolic Syndrome on Immunity. *Adv Nutr.* 2016 Jan 1;7(1):66–75.

28. Sun Y, Wang Q, Yang G, Lin C, Zhang Y, Yang P. Weight and prognosis for influenza A(H1N1)pdm09 infection during the pandemic period between 2009 and 2011: a systematic review of observational studies with meta-analysis. *Infect Dis.* 2016 Dec;48(11–12):813–22.
29. Ni Y-N, Luo J, Yu H, Wang Y-W, Hu Y-H, Liu D, et al. Can body mass index predict clinical outcomes for patients with acute lung injury/acute respiratory distress syndrome? A meta-analysis. *Crit Care.* 2017 Dec;21(1):36.
30. John E Repine AF-B. Adipose-Lung Cell Crosstalk in the Obesity-ARDS Paradox. *J Pulm Respir Med* [Internet]. 3–2. Available from: <https://www.hilarispublisher.com/open-access/adipose-lung-cell-crosstalk-in-the-obesity-ards-paradox-2161-105X.1000144.pdf>
31. Milner JJ, Rebeles J, Dhungana S, Stewart DA, Sumner SCJ, Meyers MH, et al. Obesity Increases Mortality and Modulates the Lung Metabolome during Pandemic H1N1 Influenza Virus Infection in Mice. *J Immunol.* 2015 May 15;194(10):4846–59.
32. Maier HE, Lopez R, Sanchez N, Ng S, Gresh L, Ojeda S, et al. Obesity Increases the Duration of Influenza A Virus Shedding in Adults. *J Infect Dis.* 2018 Sep 22;218(9):1378–82.
33. Misumi I, Starmer J, Uchimura T, Beck MA, Magnuson T, Whitmire JK. Obesity Expands a Distinct Population of T Cells in Adipose Tissue and Increases Vulnerability to Infection. *Cell Rep.* 2019 Apr;27(2):514-524.e5.
34. Nuorti JP, Butler JC, Farley MM, Harrison LH, McGeer A, Kolczak MS, et al. Cigarette Smoking and Invasive Pneumococcal Disease. *N Engl J Med.* 2000 Mar 9;342(10):681–9.
35. Lasselin J, Alvarez-Salas E, Grigoleit J-S. Well-being and immune response: a multi-system perspective. *Curr Opin Pharmacol.* 2016 Aug;29:34–41.
36. Krüger K, Mooren F-C, Pilat C. The Immunomodulatory Effects of Physical Activity. *Curr Pharm Des.* 2016 Jun 15;22(24):3730–48.

37. Pearson-Stuttard J, Blundell S, Harris T, Cook DG, Critchley J. Diabetes and infection: assessing the association with glycaemic control in population-based studies. *Lancet Diabetes Endocrinol.* 2016 Feb;4(2):148–58.
38. Urwin HJ, Miles EA, Noakes PS, Kremmyda L-S, Vlachava M, Diaper ND, et al. Effect of salmon consumption during pregnancy on maternal and infant faecal microbiota, secretory IgA and calprotectin. *Br J Nutr.* 2014 Mar 14;111(5):773–84.
39. Moher D, Liberati A, Tetzlaff J, Altman DG, The PRISMA Group. Preferred Reporting Items for Systematic Reviews and Meta-Analyses: The PRISMA Statement. *PLoS Med.* 2009 Jul 21;6(7):e1000097.
40. Xu L, yaqian mao, Chen G. Risk factors for severe corona virus disease 2019 (COVID-19) patients□: a systematic review and meta analysis [Internet]. *Infectious Diseases (except HIV/AIDS)*; 2020 Apr [cited 2020 Apr 29]. Available from: <http://medrxiv.org/lookup/doi/10.1101/2020.03.30.20047415>
41. Wells G. Newcastle-Ottawa quality assessment scale cohort studies. University of Ottawa; 2014.
42. Ioannidis JPA, Patsopoulos NA, Evangelou E. Uncertainty in heterogeneity estimates in meta-analyses. *BMJ.* 2007 Nov 3;335(7626):914–6.
43. Higgins JPT, Thompson SG. Quantifying heterogeneity in a meta-analysis. *Stat Med.* 2002 Jun 15;21(11):1539–58.
44. Higgins JPT. Measuring inconsistency in meta-analyses. *BMJ.* 2003 Sep 6;327(7414):557–60.
45. Neyeloff JL, Fuchs SC, Moreira LB. Meta-analyses and Forest plots using a microsoft excel spreadsheet: step-by-step guide focusing on descriptive data analysis. *BMC Res Notes.* 2012 Dec;5(1):52.

46. Lau J, Ioannidis JPA, Terrin N, Schmid CH, Olkin I. The case of the misleading funnel plot. *BMJ*. 2006 Sep 16;333(7568):597–600.
47. Higgins JPT. Measuring inconsistency in meta-analyses. *BMJ*. 2003 Sep 6;327(7414):557–60.
48. Melsen WG, Bootsma MCJ, Rovers MM, Bonten MJM. The effects of clinical and statistical heterogeneity on the predictive values of results from meta-analyses. *Clin Microbiol Infect*. 2014 Feb;20(2):123–9.
49. Onder G, Rezza G, Brusaferro S. Case-Fatality Rate and Characteristics of Patients Dying in Relation to COVID-19 in Italy. *JAMA* [Internet]. 2020 Mar 23 [cited 2020 Apr 29]; Available from: <https://jamanetwork.com/journals/jama/fullarticle/2763667>
50. Lighter J, Phillips M, Hochman S, Sterling S, Johnson D, Francois F, et al. Obesity in patients younger than 60 years is a risk factor for Covid-19 hospital admission. *Clin Infect Dis*. 2020 Apr 9;ciaa415.
51. Guo A-X, Cui J-J, OuYang Q-Y, He L, Guo C-X, Yin J-Y. The clinical characteristics and mortal causes analysis of COVID-19 death patients [Internet]. *Infectious Diseases (except HIV/AIDS)*; 2020 Apr [cited 2020 Apr 29]. Available from: <http://medrxiv.org/lookup/doi/10.1101/2020.04.12.20062380>
52. Liao J, Fan S, Chen J, Wu J, Xu S, Guo Y, et al. Epidemiological and clinical characteristics of COVID-19 in adolescents and young adults [Internet]. *Epidemiology*; 2020 Mar [cited 2020 Apr 29]. Available from: <http://medrxiv.org/lookup/doi/10.1101/2020.03.10.20032136>
53. Xu L, yaqian mao, Chen G. Risk factors for severe corona virus disease 2019 (COVID-19) patients□: a systematic review and meta analysis [Internet]. *Infectious Diseases (except HIV/AIDS)*; 2020 Apr [cited 2020 Apr 29]. Available from: <http://medrxiv.org/lookup/doi/10.1101/2020.03.30.20047415>

54. Wu J, Li W, Shi X, Chen Z, Jiang B, Liu J, et al. Early antiviral treatment contributes to alleviate the severity and improve the prognosis of patients with novel coronavirus disease (COVID-19). *J Intern Med*. 2020 Apr 20;joim.13063.
55. Liu M, He P, Liu HG, Wang XJ, Li FJ, Chen S, et al. [Clinical characteristics of 30 medical workers infected with new coronavirus pneumonia]. *Zhonghua Jie He He Hu Xi Za Zhi Zhonghua Jiehe He Huxi Zazhi Chin J Tuberc Respir Dis*. 2020 Feb 17;43(0):E016.
56. Garg S, Kim L, Whitaker M, O'Halloran A, Cummings C, Holstein R, et al. Hospitalization Rates and Characteristics of Patients Hospitalized with Laboratory-Confirmed Coronavirus Disease 2019 — COVID-NET, 14 States, March 1–30, 2020. *MMWR Morb Mortal Wkly Rep*. 2020 Apr 17;69(15):458–64.
57. Simonnet A, Chetboun M, Poissy J, Raverdy V, Noulette J, Duhamel A, et al. High prevalence of obesity in severe acute respiratory syndrome coronavirus-2 (SARS-CoV-2) requiring invasive mechanical ventilation. *Obesity* [Internet]. 2020 Apr 9 [cited 2020 May 2]; Available from: <http://doi.wiley.com/10.1002/oby.22831>
58. Liao J, Fan S, Chen J, Wu J, Xu S, Guo Y, et al. Epidemiological and clinical characteristics of COVID-19 in adolescents and young adults [Internet]. *Epidemiology*; 2020 Mar [cited 2020 May 2]. Available from: <http://medrxiv.org/lookup/doi/10.1101/2020.03.10.20032136>
59. Guo A-X, Cui J-J, OuYang Q-Y, He L, Guo C-X, Yin J-Y. The clinical characteristics and mortal causes analysis of COVID-19 death patients [Internet]. *Infectious Diseases (except HIV/AIDS)*; 2020 Apr [cited 2020 May 2]. Available from: <http://medrxiv.org/lookup/doi/10.1101/2020.04.12.20062380>
60. Liao J, Fan S, Chen J, Wu J, Xu S, Guo Y, et al. Epidemiological and clinical characteristics of COVID-19 in adolescents and young adults [Internet]. *Epidemiology*; 2020 Mar [cited 2020 Apr 29]. Available from: <http://medrxiv.org/lookup/doi/10.1101/2020.03.10.20032136>
61. Qi D, Yan X, Tang X, Peng J, Yu Q, Feng L, et al. Epidemiological and clinical features of 2019-nCoV acute respiratory disease cases in Chongqing municipality, China: a

- retrospective, descriptive, multiple-center study [Internet]. Respiratory Medicine; 2020 Mar [cited 2020 May 2]. Available from: <http://medrxiv.org/lookup/doi/10.1101/2020.03.01.20029397>
62. Hu L, Chen S, Fu Y, Gao Z, Long H, Ren H, et al. Risk Factors Associated with Clinical Outcomes in 323 COVID-19 Patients in Wuhan, China [Internet]. Infectious Diseases (except HIV/AIDS); 2020 Mar [cited 2020 May 2]. Available from: <http://medrxiv.org/lookup/doi/10.1101/2020.03.25.20037721>
63. Yang P, Ding Y, Xu Z, Pu R, Li P, Yan J, et al. Epidemiological and clinical features of COVID-19 patients with and without pneumonia in Beijing, China [Internet]. Epidemiology; 2020 Mar [cited 2020 May 2]. Available from: <http://medrxiv.org/lookup/doi/10.1101/2020.02.28.20028068>
64. Cai Q, Huang D, Ou P, Yu H, Zhu Z, Xia Z, et al. COVID-19 in a designated infectious diseases hospital outside Hubei Province, China. Allergy. 2020 Apr 17;all.14309.
65. Petrilli CM, Jones SA, Yang J, Rajagopalan H, O'Donnell LF, Chernyak Y, et al. Factors associated with hospitalization and critical illness among 4,103 patients with COVID-19 disease in New York City [Internet]. Intensive Care and Critical Care Medicine; 2020 Apr [cited 2020 May 2]. Available from: <http://medrxiv.org/lookup/doi/10.1101/2020.04.08.20057794>