

TITLE PAGE

Title:

Clinical course and risk factors for mortality of COVID-19 patients with pre-existing
cirrhosis: A multicenter cohort study

Authors and affiliations:

Xiaolong Qi^{1†*#}, Yanna Liu^{1#}, Jonathan A. Fallowfield^{2#}, Jitao Wang^{1,3#}, Jianwen Wang⁴,
Xinyu Li⁵, Jindong Shi⁶, Hongqiu Pan⁷, Shengqiang Zou⁷, Hongguang Zhang⁷, Zhenhuai
Chen⁸, Fujian Li⁸, Yan Luo⁹, Mei Mei⁹, Huiling Liu⁹, Zhengyan Wang¹⁰, Jinlin Li¹⁰, Hua
Yang¹¹, Huihua Xiang¹², Xiaodan Li¹³, Tao Liu¹³, Ming-Hua Zheng¹⁴, Chuan Liu¹, Yifei
Huang¹, Dan Xu¹, Xiaoguo Li¹, Ning Kang¹, Qing He¹⁵, Ye Gu¹⁶, Guo Zhang¹⁷, Chuxiao
Shao¹⁸, Dengxiang Liu³, Lin Zhang¹⁹, Xun Li¹, Norifumi Kawada²⁰, Zicheng Jiang²¹,
Fengmei Wang²², Bin Xiong^{23*}, Tetsuo Takehara^{24†}, Don C. Rockey^{25†}, for the
COVID-Cirrhosis-CHESS Group

1. CHESS Center, Institute of Portal Hypertension, The First Hospital of Lanzhou University, Lanzhou, Gansu, China
2. Centre for Inflammation Research, University of Edinburgh, Edinburgh, UK
3. CHESS-COVID-19 Group, Xingtai People's Hospital, Xingtai, China
4. Department of Tuberculosis and Respiratory, Wuhan Jinyintan Hospital, Wuhan, China
5. Department of Infectious Disease, Shanghai Fifth People's Hospital of Fudan University, Shanghai, China
6. Department of Respiratory Medicine, Shanghai Fifth People's Hospital of Fudan

University, Shanghai, China

7. Department of Infectious Diseases and Critical Care Medicine, The Affiliated Third Hospital of Jiangsu University, Zhenjiang, China
8. Department of Respiratory Medicine, The People's Hospital of Baoding, Baoding, China
9. Department of Gastroenterology, Tianjin Haihe Hospital, Tianjin, China
10. Departments of Respiratory Medicine, Suizhou Hospital, Hubei University of Medicine, Suizhou, China
11. Departments of Respiratory Medicine, Minda Hospital Affiliated to Hubei University for Nationalities, Enshi, Hubei, China
12. Department of Radiology, Minda Hospital Affiliated to Hubei University for Nationalities, Enshi, Hubei, China
13. Department of Infectious Disease, The Central Hospital of Enshi Tujia And Miao Autonomous Prefecture, Enshi, Hubei, China
14. Department of Hepatology, The First Affiliated Hospital of Wenzhou Medical University, Wenzhou, China
15. CHESS-COVID-19 Group, The Third People's Hospital of Shenzhen, Shenzhen, China
16. CHESS-COVID-19 Group, The Sixth People's Hospital of Shenyang, Shenyang, China
17. CHESS-COVID-19 Group, The People's Hospital of Guangxi Zhuang Autonomous Region, Nanning, China
18. CHESS-COVID-19 Group, Zhejiang University Lishui Hospital & Lishui Central Hospital, Lishui, China
19. Hepatopancreatobiliary Center, Beijing Tsinghua Changgung Hospital, School of

Clinical Medicine, Tsinghua University, Beijing, China

20. Department of Hepatology, Graduate School of Medicine, Osaka City University, Osaka, Japan
21. Department of Infectious Disease, Ankang Central Hospital, Ankang, China
22. Department of Gastroenterology and Hepatology, Tianjin Second People's Hospital, Tianjin, China
23. Department of Radiology, Union Hospital, Tongji Medical College, Huazhong University of Science and Technology, Wuhan, China
24. Department of Gastroenterology and Hepatology, Osaka University Graduate School of Medicine, Osaka, Japan
25. Division of Gastroenterology and Hepatology, Medical University South Carolina, Charleston, South Carolina, USA

Joint first authors

† Joint senior authors

Correspondence to:

Xiaolong Qi, M.D., Professor of Medicine

Chairman, CHESS (Chinese Portal Hypertension Diagnosis and Monitoring Study Group)

Chief, CHESS Center, Institute of Portal Hypertension, The First Hospital of Lanzhou

University, Lanzhou 730000, China

E-mail: qixiaolong@vip.163.com

OR

Bin Xiong, M.D., Professor of Medicine

Department of Radiology, Union Hospital, Tongji Medical College, Huazhong University of

Science and Technology, Wuhan, China

Email: herr_xiong@126.com

Author contributions:

Concept and design: Xiaolong Qi; Acquisition and interpretation of data: Bin Xiong, Jianwen

Wang, Xinyu Li, Jindong Shi, Hongqiu Pan, Shengqiang Zou, Hongguang Zhang, Zhenhuai

Chen, Fujian Li, Yan Luo, Mei Mei, Huiling Liu, Zhengyan Wang, Jinlin Li, Hua Yang,

Huihua Xiang, Xiaodan Li, Tao Liu, Ming-Hua Zheng, Chuan Liu, Yifei Huang, Dan Xu,

Qing He, Ye Gu, Guo Zhang, Chuxiao Shao, Dengxiang Liu, Lin Zhang, Xun Li, Zicheng

Jiang, Fengmei Wang; Drafting of the manuscript: Yanna Liu, Jitao Wang, Xiaolong Qi.

Critical revision of the manuscript: Don C. Rockey, Jonathan A. Fallowfield, Tetsuo Takehara,

Norifumi Kawada.

Acknowledgement:

We thank the great support and critical comments of Xavier Dray (Saint Antoine Hospital,

APHP & Sorbonne University, France), Mingkai Chen (Renmin Hospital of Wuhan

University, China), and Necati Örmeci (Ankara University School of Medicine, Turkey).

Conflicts of interest:

The authors have declared no conflict of interest related to the study.

Financial support:

None.

Word count (body text):

2016 words

Summary

Background Patients with pre-existing cirrhosis are considered at increased risk of severe coronavirus disease 2019 (COVID-19) but the clinical course in these patients has not yet been reported. This study aimed to provide a detailed report of the clinical characteristics and outcomes among COVID-19 patients with pre-existing cirrhosis.

Methods In this retrospective, multicenter cohort study, we consecutively included all adult inpatients with laboratory-confirmed COVID-19 and pre-existing cirrhosis that had been discharged or had died by 24 March 2020 from 16 designated hospitals in China.

Demographic, clinical, laboratory and radiographic findings on admission, treatment, complications during hospitalization and clinical outcomes were collected and compared between survivors and non-survivors.

Findings Twenty-one patients were included consecutively in this study, of whom 16 were cured and 5 died in hospital. Seventeen patients had compensated cirrhosis and hepatitis B virus infection was the most common etiology. Lymphocyte and platelet counts were lower, and direct bilirubin levels were higher in patients who died than those who survived ($p=0.040$, 0.032 , and 0.006 , respectively). Acute respiratory distress syndrome and secondary infection were both the most frequently observed complications. Only one patient developed acute on chronic liver failure. Of the 5 non-survivors, all patients developed acute respiratory distress syndrome and 2 patients progressed to multiple organ dysfunction syndrome.

Interpretation Lower lymphocyte and platelet counts, and higher direct bilirubin level might represent poor prognostic indicators in SARS-CoV-2-infected patients with pre-existing cirrhosis.

Introduction

The coronavirus disease 2019 (COVID-19), caused by severe acute respiratory syndrome coronavirus-2 (SARS-CoV-2), has become a global challenge since the December 2019.¹⁻³

Concerns have been raised recently about patients with pre-existing cirrhosis, who are known to have compromised immune function and poorer outcomes from acute respiratory distress syndrome (ARDS) than patients without cirrhosis.¹⁻³ However, it remains unclear how SARS-CoV-2 infection affects the liver, if it modifies the clinical course of cirrhosis, and whether cirrhosis should be considered a significant risk factor for adverse outcomes of COVID-19.

In previous studies, the proportion of patients with pre-existing liver conditions (including hepatitis virus infection, abnormal liver function and chronic liver disease) among COVID-19 infected patients ranged from 2.0% to 11.0%.⁴⁻⁸ More than one half of patients admitted to hospital with SARS-CoV-2 infection may have elevated liver function tests and emerging liver function abnormalities after admission were associated with longer hospital stay.⁹ So far, no studies have reported the clinical features and risk factors for in-hospital death in COVID-19 patients with pre-existing cirrhosis. The aim of our multicenter study is to describe the demographic characteristics, coexisting conditions, laboratory and imaging findings, and outcomes among COVID-19 patients with pre-existing cirrhosis.

Methods

Study design and participants

This retrospective multicentre study (COVID-Cirrhosis-CHESS, ClinicalTrials.gov, NCT04329559) included consecutive patients with laboratory-confirmed COVID-19 and pre-existing cirrhosis from 16 designated hospitals in China between 31 December 2019 and 24 March 2020. A confirmed case of COVID-19 was defined by a positive result on a high-throughput sequencing or real-time reverse-transcriptase polymerase-chain-reaction assay from nasopharyngeal swab specimens; or a SARS-CoV-2 specific IgM and IgG in serum; or a SARS-CoV-2 specific IgG titration of at least 4-fold higher in the recovery stage than in the acute stage.^{4,5,10} Cirrhosis was diagnosed based on previous liver biopsy results and/or clinical findings, including a history of chronic liver disease as well as documented complications of chronic liver disease (ie, ascites, varices, hepatic encephalopathy) and/or imaging consistent with cirrhosis.¹¹ Pregnant women and children (age < 18 years) were excluded. The study was approved by the Institutional Ethics Commission of The First Hospital of Lanzhou University (No. LDYYLL2020-37). Informed consent was waived, and researchers analyzed only deidentified data.

Data collection

Demographic data, comorbidities, history of cirrhosis, onset symptoms or signs of COVID-19, laboratory findings and chest CT results on admission were collected. Child-Pugh class, and model for end-stage liver disease (MELD) score were assessed based on laboratory findings on admission. Treatment regimens, complications and clinical outcomes during

hospitalization were also collected. According to the clinical outcomes, patients were divided into two groups: a survivor group and a non-survivor group.

Study definition

Exposure history was defined as exposure to people with confirmed SARS-CoV-2 infection or to Wuhan City in China.¹² Leukopenia was defined as a leukocyte count of less than $4 \times 10^9/L$. Lymphocytopenia was defined as a lymphocyte count of less than $1 \times 10^9/L$. Thrombocytopenia was defined as a platelet count of less than $100 \times 10^9/L$. Hypoproteinemia was defined as a serum albumin level less than 35g/L. Hyperbilirubinemia was defined as a total bilirubin level higher than 17.1 $\mu\text{mol/L}$. The upper limit of the normal range of prothrombin time, aspartate transaminase, alanine aminotransferase, and gamma-glutamyl transferase were 12.5 seconds, 40U/L, 40U/L, and 50U/L, respectively.¹³ Secondary infection was diagnosed based on clinical symptoms or signs of nosocomial pneumonia, with a positive result of a new bacterial or fungal pathogen from a lower respiratory tract specimen or blood samples taken ≥ 48 h after admission. Ascites was defined as a case that had newly occurring or worsening ascites during hospitalization. Upper gastrointestinal bleeding was defined as patients who had overt signs of acute upper gastrointestinal bleeding (hematemesis, melena, or both).¹⁴ Septic shock was defined according to the World Health Organization criteria for COVID-19.¹⁵ Acute kidney injury was defined according to the clinical guideline by the Kidney Disease: Improving Global Outcomes acute kidney injury work group.¹⁶ Acute-on-chronic liver failure (ACLF) was defined according to the European Association for the Study of the Liver criteria.¹⁷ ARDS was diagnosed according to the Berlin

Definition.¹⁸

Statistical analysis

Categorical variables were reported as counts and percentages. Continuous variables were presented as median and interquartile range. Mann-Whitney U test or Fisher's exact test were used to compare differences between survivors and non-survivors where appropriate. A two-sided p-value of less than 0.05 was considered statistically significant. The data were analyzed by SPSS version 20.0 for Windows (SPSS Inc., Chicago, IL, USA).

Results

Twenty-one COVID-19 patients with pre-existing cirrhosis were identified and all were included in the final analysis. The median age of the 21 patients was 68 years (range: 43-87 years) and 11 of them were male (Table 1). Most patients had compensated cirrhosis (81.0%) with Child-Pugh class A, B, and C in 16, 3, and 2 patients, respectively. The median MELD score was 8 (range: 6-23). Twelve patients had chronic hepatitis B, including 3 who also had hepatitis C virus co-infection, alcohol abuse and schistosomiasis, respectively. Comorbidities other than cirrhosis were present in most patients (66.7%), with hypertension (19.0%) and coronary heart disease (19.0%) being the most common comorbidities, followed by type 2 diabetes (14.3%) and malignancy (14.3%). The median interval between onset of the illness and admission was 8 days, ranging from 0 to 30 days. The most common symptoms on admission were fever and cough, followed by shortness of breath and sputum production. There were no significant differences between survivors (n=16) and non-survivors (n=5) on age, sex, comorbidities, etiology of cirrhosis, stage of cirrhosis (compensated versus decompensated), Child-Pugh class, MELD score, interval between onset and admission, or onset symptoms of COVID-19.

Leukopenia, lymphopenia and thrombocytopenia occurred in 8 (38.3%), 15 (71.4%), and 8 (38.1%) patients, respectively (Table 1). Hypoproteinemia, hyperbilirubinemia, and prolonged prothrombin time occurred in 11 (52.4%), 8 (38.1%), and 5 (23.8%) patients, respectively. Elevations in aspartate transaminase, alanine aminotransferase, and gamma-glutamyl transferase levels were present in 8 (38.1%), 5 (23.8%), and 5 (23.8%)

patients, respectively. Nearly all patients had at least one typical sign of SARS-CoV-2 infection on chest CT including ground-glass opacities, consolidation, and bilateral pulmonary infiltration. Figure 1 showed representative chest CT images of COVID-19 and abdominal images of cirrhosis from survivor and non-survivor groups. Patients who died had lower total lymphocyte and platelet counts, and higher direct bilirubin levels than patients who survived ($p=0.040$, 0.032 , and 0.006 , respectively) (Table 1).

Treatment and complications occurring during hospitalization were summarized in Table 2. Five patients were transferred to the intensive care unit, including four patients from the non-survivor group ($p=0.004$). Use of systemic corticosteroids ($p=0.003$), non-invasive ventilation ($p=0.028$), invasive mechanical ventilation ($p=0.008$), continuous renal replacement therapy ($p=0.048$), and extracorporeal membrane oxygenation ($p=0.048$) differed significantly between non-survivors and survivors. Overall, 17 patients received antiviral treatment. Among them, arbidol monotherapy, lopinavir-ritonavir plus interferon alfa-2b combination therapy, and oseltamivir monotherapy were given to seven, five, and three patients, respectively. Two patients experienced a switch in the antiviral regimen (one from lopinavir-ritonavir plus arbidol combination therapy to interferon alfa-2b monotherapy; one from arbidol monotherapy to lopinavir-ritonavir plus interferon alfa-2b combination therapy). Secondary infection and ARDS were both the most frequently observed complication (28.6%), followed by ascites (23.8%). One patient developed ACLF. The frequency of ARDS and gastrointestinal bleeding were higher in non-survivors than survivors (100% vs. 6.3%, $p<0.001$, and 60.0% vs. 6.3%, $p=0.028$, respectively). Among the five

patients who died, all developed ARDS and two of them progressed to multiple organ dysfunction syndromes.

Discussion

This retrospective multicenter study (COVID-Cirrhosis-CHESS) reports the demographic characteristics, coexisting conditions, laboratory and imaging findings, and outcomes among COVID-19 patients with pre-existing cirrhosis. The cause of death in most patients is not due to progressive liver disease but rather pulmonary disease. Lower lymphocyte and platelet counts, and higher direct bilirubin level were observed in patients who survived compared to those who died.

In our cohort of COVID-19 patients with pre-existing cirrhosis, we found that fever and cough were the most common symptoms on admission; and most of the patients had comorbidities other than cirrhosis. These findings were similar to the previous studies of COVID-19 among general populations.⁴⁻⁶ According to the China Center for Disease Control and Prevention's report of 44,672 laboratory-confirmed cases of COVID-19, deaths were mainly observed among patients of older age and/or with pre-existing comorbid conditions including cardiovascular disease, diabetes, chronic respiratory disease, hypertension, and cancer.¹⁹ In Italy, besides the above mentioned factors, male patients also had an increased risk of death, as revealed by the report of the first month of documented COVID-19 cases.²⁰ So far, no studies have been reported risk factors for death in COVID-19 patients with pre-existing cirrhosis. Our analysis did not indicate a higher mortality in included patients of older age, male sex or with pre-existing comorbidities. This might be due to the narrow spectrum of our studied population and the limited sample size.

The liver plays important roles in both adaptive and innate immune responses as it is enriched with lymphocytes including T and B lymphocytes, and natural killer cells.²¹ In addition, the liver is a central regulator of the number of circulating platelets via thrombopoietin production and clearance of aged platelets.²² Thus, patients with cirrhosis are more likely to have lymphopenia and thrombocytopenia and, as the disease progresses, this becomes more prominent. In our study, the frequency of lymphopenia and thrombocytopenia were both as high as 80.0% in the non-survivor group, 40.0% of whom had decompensated cirrhosis. Additionally, a lower lymphocyte and platelet counts on admission were observed in non-survivors compared to survivors. These findings were also demonstrated in previous studies in the general population.^{23,24} A meta-analysis including 10 studies and 1,994 patients of COVID-19 showed that lymphopenia was the most common laboratory findings, which was consistent with respiratory virus infection.²³ In another meta-analysis, studying the effect of platelet count on prognosis of COVID-19 showed that, comparing patients by survival, a low platelet count was associated with over five-fold increased risk of severe COVID-19.²⁴ Direct bilirubin was also observed to be higher in non-survivors than survivors in our study, which suggests a potential adverse effect on liver function in this setting. These findings underscore that in patients with COVID-19 and pre-existing cirrhosis, a decrease in lymphocytes and platelet counts and increased direct bilirubin should be monitored as they may indicate a poorer prognosis.

We recognize limitations of the current study. First, the sample size is small, which limits analysis of predictive factors for mortality and the generalizability of the results. Further

studies with large sample size and prospective design are needed to better describe the clinical course of COVID-19 in patients with pre-existing cirrhosis and to determine the risk factors for poor outcomes in this setting. Secondly, the majority of patients in this study had underlying hepatitis B virus-related cirrhosis. However, to date there is no evidence to suggest that patients with stable chronic liver disease due to viral hepatitis have increased susceptibility to SARS-CoV-2 infection. In the absence of a liver biopsy, we do not know whether SARS-CoV-2 infection had effects on liver histopathology in our study population. Lastly, the study included only patients from Chinese medical institutions, and whether the data are generalizable to patients in other parts of the world remains unknown.

In conclusion, we have reported the demographic characteristics, coexisting conditions, laboratory and imaging findings, and outcomes among COVID-19 patients with pre-existing cirrhosis. It appears that the cause of death in most patients is not due to progressive liver disease (i.e. development of ACLF), but rather pulmonary disease. At presentation, lower lymphocyte and platelet counts, and higher direct bilirubin level may be associated with higher risk of death.

Declaration of interests

We declare no competing interests related to this paper.

References

1. Zhang C, Shi L, Wang FS. Liver injury in COVID-19: management and challenges. *Lancet Gastroenterol Hepatol*. 2020;5(5):428–430. doi:10.1016/S2468-1253(20)30057-1.
2. Gacouin A, Locufier M, Uhel F, Letheulle J, Bouju P, Fillatre P, et al. Liver cirrhosis is independently associated with 90-day mortality in ARDS patients. *Shock* 2016;45:16–21. doi: 10.1097/SHK.0000000000000487.
3. Bangash MN, Patel J, Parekh D. COVID-19 and the liver: little cause for concern [published online ahead of print, 2020 Mar 20]. *Lancet Gastroenterol Hepatol*. 2020;S2468-1253(20)30084-4. doi:10.1016/S2468-1253(20)30084-4.
4. Guan WJ, Ni ZY, Hu Y, Liang WH, Ou CQ, He JX, et al. Clinical Characteristics of Coronavirus Disease 2019 in China. [published online ahead of print, 2020 Feb 28]. *N Engl J Med* 2020;10.1056/NEJMoa2002032. doi:10.1056/NEJMoa2002032.
5. Huang C, Wang Y, Li X, et al. Clinical features of patients infected with 2019 novel coronavirus in Wuhan, China [published correction appears in *Lancet*. 2020 Jan 30;:]. *Lancet*. 2020;395(10223):497–506. doi:10.1016/S0140-6736(20)30183-5.
6. Wang D, Hu B, Hu C, et al. Clinical Characteristics of 138 Hospitalized Patients With 2019 Novel Coronavirus-Infected Pneumonia in Wuhan, China [published online ahead of print, 2020 Feb 7]. *JAMA*. 2020;e201585. doi:10.1001/jama.2020.1585.
7. Shi H, Han X, Jiang N, et al. Radiological findings from 81 patients with COVID-19 pneumonia in Wuhan, China: a descriptive study. *Lancet Infect Dis*. 2020;20(4):425–434. doi:10.1016/S1473-3099(20)30086-4.
8. Xu XW, Wu XX, Jiang XG, et al. Clinical findings in a group of patients infected with the

- 2019 novel coronavirus (SARS-Cov-2) outside of Wuhan, China: retrospective case series
[published correction appears in BMJ. 2020 Feb 27;368:m792]. BMJ. 2020;368:m606.
Published 2020 Feb 19. doi:10.1136/bmj.m606.
9. Fan Z, Chen L, Li J, et al. Clinical Features of COVID-19-Related Liver Damage
[published online ahead of print, 2020 Apr 10]. Clin Gastroenterol Hepatol.
2020;S1542-3565(20)30482-1. doi:10.1016/j.cgh.2020.04.002.
 10. Chen N, Zhou M, Dong X, Qu J, Gong F, Han Y, et al. Epidemiological and clinical
characteristics of 99 cases of 2019 novel coronavirus pneumonia in Wuhan, China: a
descriptive study. Lancet 2020;395(10223):507–513.
doi:10.1016/S0140-6736(20)30211-7.
 11. Tsochatzis EA, Bosch J, Burroughs AK. Liver cirrhosis. Lancet.
2014;383(9930):1749–1761. doi:10.1016/S0140-6736(14)60121-5.
 12. Zhou F, Yu T, Du R, et al. Clinical course and risk factors for mortality of adult inpatients
with COVID-19 in Wuhan, China: a retrospective cohort study [published correction
appears in Lancet. 2020 Mar 28;395(10229):1038]. Lancet. 2020;395(10229):1054–1062.
doi:10.1016/S0140-6736(20)30566-3
 13. Garner JS, Jarvis WR, Emori TG, Horan TC, Hughes JM. CDC definitions for
nosocomial infections, 1988 [published correction appears in Am J Infect Control 1988
Aug;16(4):177]. Am J Infect Control. 1988;16(3):128–140.
doi:10.1016/0196-6553(88)90053-3.
 14. Lau JYW, Yu Y, Tang RSY, et al. Timing of Endoscopy for Acute Upper Gastrointestinal
Bleeding. N Engl J Med. 2020;382(14):1299–1308. doi:10.1056/NEJMoa1912484.

15. WHO. Clinical management of severe acute respiratory infection when novel coronavirus (nCoV) infection is suspected. Mar 13, 2020.
[https://www.who.int/publications-detail/clinical-management-of-severe-acute-respiratory-infection-when-novel-coronavirus-\(ncov\)-infection-is-suspected](https://www.who.int/publications-detail/clinical-management-of-severe-acute-respiratory-infection-when-novel-coronavirus-(ncov)-infection-is-suspected)
16. Kidney disease: improving global outcomes (KDIGO) acute kidney injury work group. KDIGO clinical practice guideline for acute kidney injury. March, 2012.
<https://kdigo.org/wp-content/uploads/2016/10/KDIGO-2012-AKI-Guideline-English.pdf>
(accessed 4 April 2020).
17. Arroyo V, Moreau R, Jalan R, Ginès P; EASL-CLIF Consortium CANONIC Study. Acute-on-chronic liver failure: A new syndrome that will re-classify cirrhosis. *J Hepatol.* 2015;62(1 Suppl):S131–S143. doi:10.1016/j.jhep.2014.11.045.
18. ARDS Definition Task Force, Ranieri VM, Rubenfeld GD, et al. Acute respiratory distress syndrome: the Berlin Definition. *JAMA.* 2012;307(23):2526–2533. doi:10.1001/jama.2012.5669.
19. Wu Z, McGoogan JM. Characteristics of and Important Lessons From the Coronavirus Disease 2019 (COVID-19) Outbreak in China: Summary of a Report of 72 314 Cases From the Chinese Center for Disease Control and Prevention [published online ahead of print, 2020 Feb 24]. *JAMA.* 2020;10.1001/jama.2020.2648. doi:10.1001/jama.2020.2648.
20. Onder G, Rezza G, Brusaferro S. Case-Fatality Rate and Characteristics of Patients Dying in Relation to COVID-19 in Italy [published online ahead of print, 2020 Mar 23]. *JAMA.* 2020;10.1001/jama.2020.4683. doi:10.1001/jama.2020.4683.
21. Albillos A, Lario M, Álvarez-Mon M. Cirrhosis-associated immune dysfunction:

distinctive features and clinical relevance. *J Hepatol* 2014;61:1385–1396.

doi:10.1016/j.jhep.2014.08.010.

22. Pradella P, Bonetto S, Turchetto S, et al. Platelet production and destruction in liver cirrhosis. *J Hepatol*. 2011;54(5):894–900. doi:10.1016/j.jhep.2010.08.018.

23. Li LQ, Huang T, Wang YQ, et al. COVID-19 patients' clinical characteristics, discharge rate, and fatality rate of meta-analysis [published online ahead of print, 2020 Mar 12]. *J Med Virol*. 2020;10.1002/jmv.25757. doi:10.1002/jmv.25757.

24. Lippi G, Plebani M, Henry BM. Thrombocytopenia is associated with severe coronavirus disease 2019 (COVID-19) infections: A meta-analysis [published online ahead of print, 2020 Mar 13]. *Clin Chim Acta*. 2020;506:145–148. doi:10.1016/j.cca.2020.03.022.

Table 1. Clinical, laboratory, and radiographic findings on admission

| | Total (n=21) | Non-survivor (n=5) | Survivor (n=16) | p-value |
|--|-------------------------|-------------------------------|----------------------------|----------------|
| Clinical characteristics | | | | |
| Age, years | 68 (52-75) | 68 (50-75) | 69 (52-75) | 0.842 |
| Sex | | | | 0.311 |
| Female | 10 (47.6%) | 1 (20.0%) | 9 (56.3%) | - |
| Male | 11 (52.4%) | 4 (80.0%) | 7 (43.8%) | - |
| Etiology of cirrhosis | | | | 0.489 |
| Chronic hepatitis B | 9 (42.9%) | 2 (40.0%) | 7 (43.8%) | - |
| Chronic hepatitis C | 2 (9.5%) | 0 (0%) | 2 (12.5%) | - |
| Alcoholic liver disease | 2 (9.5%) | 1 (20.0%) | 1 (6.2%) | - |
| Schistosomiasis | 1 (4.8%) | 1 (20.0%) | 0 (0%) | - |
| Autoimmune hepatitis | 1 (4.8%) | 0 (0%) | 1 (6.2%) | - |
| Other* | 6 (28.6%) | 1 (20.0%) | 4 (%) | - |
| Stage of cirrhosis | | | | 0.228 |
| Compensation | 17 (81.0%) | 3 (60.0%) | 14 (87.5%) | - |
| Decompensation | 4 (19.0%) | 2 (40.0%) | 2 (12.5%) | - |
| Child-Pugh class | | | | 0.354 |
| A | 16 (76.2%) | 3 (60.0%) | 13 (81.3%) | - |
| B | 3 (14.3%) | 0 (0%) | 3 (18.8%) | - |
| C | 2 (9.5%) | 2 (40.0%) | 0 (0%) | - |
| MELD score | 8 (7-11) | 11 (7-14) | 8 (7-9) | 0.398 |
| Exposure history | 20 (95.2%) | 5 (100.0%) | 15 (93.8%) | 1.000 |
| Interval between onset and admission, days | 8 (3-14) | 3 (3-20) | 8 (4-15) | 0.495 |
| Onset Symptoms | | | | |
| Fever | 16 (76.2%) | 5 (100%) | 11 (68.8%) | 0.278 |
| Cough | 15 (71.4%) | 4 (80.0%) | 11 (68.8%) | 1.000 |
| Shortness of breath | 12 (57.1%) | 3 (60.0%) | 9 (56.3%) | 1.000 |
| Sputum | 7 (33.3%) | 2 (40.0%) | 5 (31.3%) | 1.000 |
| Sore throat | 3 (14.3%) | 0 (0%) | 3 (18.8%) | 0.549 |
| Diarrhea | 2 (9.5%) | 1 (20.0%) | 1 (6.3%) | 0.429 |
| Comorbidities | | | | |
| Any | 13 (61.9) | 5 (100%) | 8 (50.0%) | 0.111 |
| Hypertension | 7 (33.3%) | 2 (40.0%) | 5 (31.3%) | 1.000 |
| Diabetes | 4 (19.0%) | 2 (40.0%) | 2 (12.5%) | 0.228 |
| Coronary heart disease | 4 (19.0%) | 2 (40.0%) | 2 (12.5%) | 0.228 |
| Chronic kidney disease | 2 (9.5%) | 0 (0%) | 2 (12.5%) | 1.000 |
| Malignancy | 3 (14.3%) | 1 (20.0%) | 2 (12.5%) | 1.000 |
| Laboratory characteristics | | | | |
| White blood cell, $\times 10^9/L$ | 4.34 (2.81-5.52) | 4.60 (1.86-9.05) | 4.28 (3.10-5.15) | 0.905 |
| Neutrophils, $\times 10^9/L$ | 2.64 (1.68-4.30) | 4.01 (1.54-7.45) | 2.48 (1.64-4.22) | 0.548 |
| Lymphocyte, $\times 10^9/L$ | 0.78 (0.51-1.24) | 0.36 (0.20-1.10) | 0.86 (0.70-1.29) | 0.040* |

| | | | | |
|-------------------------------------|--------------------|----------------------|-------------------|---------------|
| Platelet, $\times 10^9/L$ | 120 (70-182) | 77 (44-93) | 126 (83-201) | 0.032* |
| ALT, U/L | 30 (19-41) | 30 (22-52) | 28 (17-38) | 0.603 |
| AST, U/L | 38 (27-55) | 42 (32-105) | 31 (26-51) | 0.275 |
| GGT, U/L | 23 (20-59) | 61 (22-151) | 22 (17-27) | 0.098 |
| Total bilirubin, $\mu\text{mol/L}$ | 14.5 (10.6-22.5) | 22.2 (16.6-34.6) | 12.6 (8.9-20.0) | 0.075 |
| Direct bilirubin, $\mu\text{mol/L}$ | 4.8 (2.5-10.9) | 12.0 (9.4-14.6) | 3.90 (2.23-6.90) | 0.006* |
| Albumin, g/L | 34.2 (26.9-38.55) | 29.0 (22.3-36.0) | 37.5 (27.6-38.7) | 0.354 |
| LDH, U/L | 306 (238-429) | 409 (178-573) | 289 (234-344) | 0.179 |
| BUN, mmol/L | 5.50 (3.97-7.65) | 5.50 (3.98-10.4) | 5.30 (3.85-7.10) | 0.660 |
| SCr, $\mu\text{mol/L}$ | 66.0 (48.7-90.4) | 66.2 (59.3-94.5) | 60.1 (47.2-87.9) | 0.398 |
| Glucose, mmol/L | 6.20 (5.10-7.91) | 7.90 (5.65-14.15) | 6.06 (4.95-7.60) | 0.208 |
| Creatine kinase, U/L | 87 (52-135) | 63 (46-416) | 91 (50-131) | 0.968 |
| APTT, s | 29.1 (22.7-32.9) | 32.9 (30.0-46.5) | 28.1 (22.1-32.6) | 0.075 |
| Prothrombin time, s | 12.8 (11.8-14.6) | 14.0 (11.7-17.5) | 12.6 (11.6-14.4) | 0.445 |
| INR | 1.08 (1.00-1.30) | 1.31 (1.00-1.59) | 1.08 (0.99-1.17) | 0.275 |
| C-reactive protein, mg/L | 18.30 (1.88-73.71) | 50.00 (13.91-116.40) | 7.20 (1.50-56.13) | 0.153 |
| Procalcitonin, ng/mL | 0.05 (0.00-0.35) | 0.10 (0.05-1.19) | 0.04 (0.00-0.09) | 0.130 |
| CT evidence of pneumonia | | | | |
| Typical signs of | 18 (85.7%) | 4 (80.0%) | 14 (87.5%) | 1.000 |
| SARS-CoV-2 infection | | | | |

AIH, autoimmune liver diseases; ALT, alanine aminotransferase; AST, aspartate transaminase; GGT, γ -glutamyl

transpeptidase; LDH, lactate dehydrogenase; BUN, blood urea nitrogen; SCr, serum creatinine; ALP, alkaline phosphatase; APTT, activated partial thromboplastin time; INR, International normalized ratio; ESR, erythrocyte sedimentation rate. Data

are expressed as median (IQR) or n (%). P-values were calculated by Mann-Whitney U test or Fisher's exact test, as

appropriate.*Other: one for with hepatitis B and hepatitis C virus co-infection, one for hepatitis B infection with history of alcohol abuse, one for hepatitis B infection with schistosomiasis, and three for unknown causes of cirrhosis.

Table 2. Treatment, complications, and outcomes

| | Total (n=21) | Non-survivor (n=5) | Survivor (n=16) | p-value |
|---|-------------------------|-------------------------------|----------------------------|--------------------|
| Treatment | | | | |
| ICU admission | 5 (23.8%) | 4 (80.0%) | 1 (6.3%) | 0.004* |
| Antiviral treatment | 17 (81.0%) | 4 (80.0%) | 13 (81.3%) | 1.000 |
| Antibiotic treatment | 15 (71.4%) | 5 (100.0%) | 10 (62.5%) | 0.262 |
| Glucocorticoids | 8 (38.1%) | 5 (100.0%) | 3 (18.8%) | 0.003* |
| Intravenous immunoglobulin | 5 (23.8%) | 3 (60.0%) | 2 (12.5%) | 0.063 |
| Oxygen therapy | 20 (95.2%) | 5 (100%) | 15 (93.8%) | 1.000 |
| Noninvasive ventilation | 4 (19.0%) | 3 (60.0%) | 1 (6.3%) | 0.028* |
| Invasive mechanical ventilation | 3 (14.3%) | 3 (60.0%) | 0 (0%) | 0.008* |
| CRRT | 2 (9.5%) | 2 (40.0%) | 0 (0%) | 0.048* |
| ECMO | 2 (9.5%) | 2 (40.0%) | 0 (0%) | 0.048* |
| Complications during hospitalization | | | | |
| Secondary infection | 6 (28.6%) | 3 (60.0%) | 3 (18.8%) | 0.115 |
| Ascites | 5 (23.8%) | 2 (40.0%) | 3 (18.8%) | 0.553 |
| Upper gastrointestinal bleeding | 4 (19.0%) | 3 (60.0%) | 1 (6.3%) | 0.028* |
| Acute on chronic liver failure | 1 (4.8%) | 1 (20.0%) | 0 (0%) | 0.238 |
| Acute kidney injury | 1 (4.8%) | 1 (20.0%) | 0 (0%) | 0.238 |
| Septic shock | 3 (14.3%) | 2 (40.0%) | 1 (6.3%) | 0.128 |
| ARDS | 6 (28.6%) | 5 (100%) | 1 (6.3%) | < 0.001* |
| Length of stay, days | 16 (11-32) | 16 (7-39) | 16 (11-31) | 0.842 |

ICU, intensive care unit; ECMO, extracorporeal membrane oxygenation; CRRT, Continuous renal replacement therapy; ARDS, acute respiratory distress syndrome. Data are expressed as median (IQR) or n (%). P-values were calculated by Mann-Whitney U test or Fisher's exact test, as appropriate.

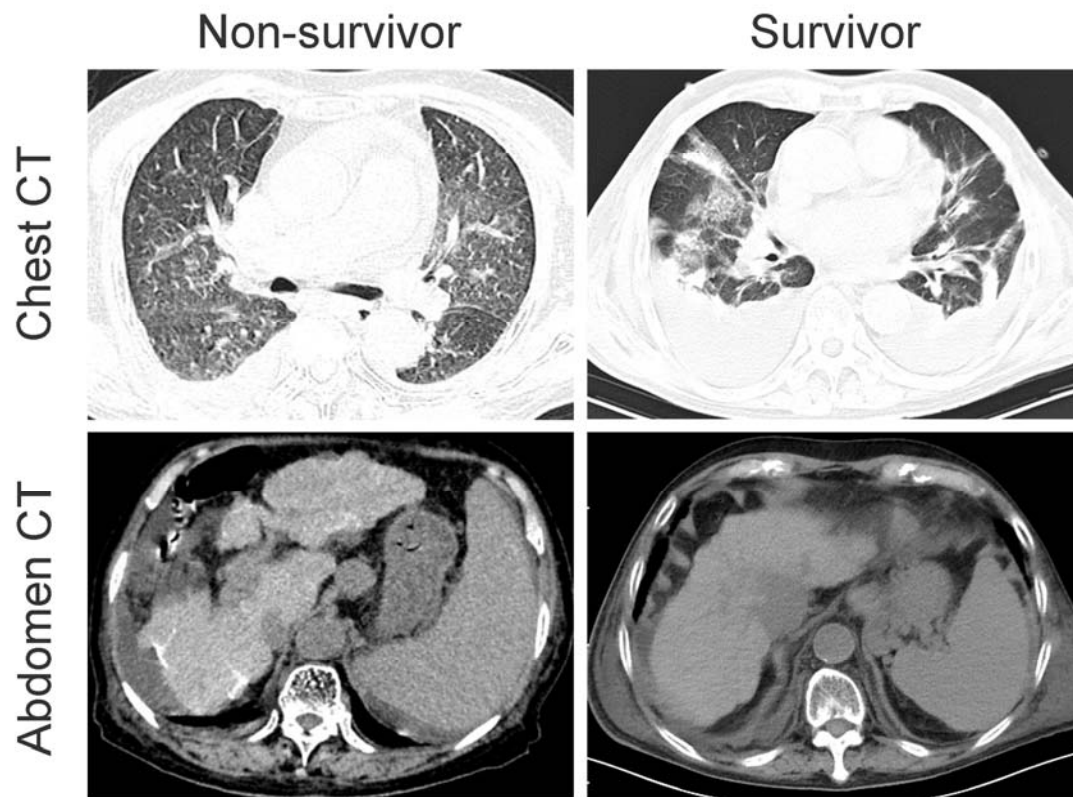


Figure 1. Baseline chest and abdomen CT scans of COVID-19 patients with pre-existing cirrhosis. Chest CT scans of both patients showed ground-glass opacities, consistent with SARS-CoV-2 infection. Abdominal CT scans showed abnormal liver morphology and splenomegaly, consistent with cirrhosis.