

Grip strength is associated with retinal and choroidal thickness in type 2 diabetes mellitus patients without retinopathy

Running title: Handgrip strength and retinal/choroidal thickness

Authors:

Zihan Qiu, MBBS^{1,2}

Wei Wang, MD, PhD^{1*}

Yan Tan, MBBS²

Miao He, MD, PhD³

Lanhua Wang, MD, PhD¹

Yuting Li, MD, MPH¹

Xia Gong, MD¹

Wenyong Huang, MD, PhD^{2*}

Affiliation and institute

1. Zhongshan Ophthalmic Center, State Key Laboratory of Ophthalmology, Sun Yat-Sen University, Guangzhou, People's Republic of China
2. Zhongshan School of Medicine, Sun Yat-sen University Guangzhou, China.
3. Department of Ophthalmology, Guangdong General Hospital, Guangdong Academy of Medical Sciences, Guangzhou, People's Republic of China.

*Co-correspondence authors.

Corresponding author:

Wenyong Huang, MD&PhD,

Professor of Ophthalmology

Vice director of Department of Preventive Ophthalmology

Zhongshan Ophthalmic Center

State Key Laboratory of Ophthalmology

Sun Yat-sen University

54S.Xianlie Road, Guangzhou, China 510060

Email: andyhwy@aliyun.com

Dr. Wei Wang, MD&PhD

Zhongshan Ophthalmic Center

State Key Laboratory of Ophthalmology

Sun Yat-sen University, Guangzhou, China 510060.

E-mail: zoc_wangwei@yahoo.com

Acknowledgments: None.

Funding: This research was supported in part by the National Natural Science Foundation of China (81570843; 81530028; 81721003).

Word count: 3122

Tables: 4

Figures: 2

Abstract

Objective: To determine the relationship between grip strength and retinal or choroidal thickness in Chinese patients with type 2 diabetes mellitus.

Design: Observational study-cross-sectional design.

Setting and Participants: The study was conducted among diabetes patients without retinopathy registered in the community health system in Guangzhou, China.

Measures: Grip strength was measured twice for each hand with a dynamometer in kilograms (kg). The retinal and choroidal thickness in macular Early Treatment Diabetic Retinopathy Study (ETDRS) sectors were measured by commercial swept-source optical coherence tomography (SS-OCT; DRI OCT-2 Triton; Topcon, Tokyo, Japan).

Results: A total of 1,029 patients were included in the study. Both retinal thickness and choroidal thickness increased with the higher quartile of grip strength. Regression analyses indicated that the average retinal and choroidal thickness increased by 0.14 μm (95%CI: 0.03-0.25 μm , $P=0.011$) and 0.57 μm (95%CI: 0.03-1.11 μm , $P=0.037$) for each additional kg of grip strength following adjustment for age and gender. Further adjustments were made for axial length, HbA1c, length of time the patient had diabetes, insulin usage, height, weight and systolic and diastolic blood pressure, which resulted in an average retinal and choroidal thickness increase of 0.13 μm (95%CI: 0.02-0.24 μm , $P=0.024$) and 0.65 μm (95%CI: 0.13-1.16 μm , $P=0.013$) for each additional kg of grip strength. Consistent results were obtained in the analyses in ETDRS 9 sectors.

Conclusion: Greater hand grip strength was found to be significantly associated with thicker retinal and choroidal layers in diabetic patients. Grip strength may provide a useful indicator of retinal health in diabetic patients. Further studies are needed to determine directionality and causality, and to examine whether improving muscle strength has a positive effect on retinal and choroidal thickness.

Keywords: grip strength; retinal thickness; choroidal thickness; diabetes mellitus

Article summary

Strengths and limitations of this study

- Grip strength is an indicator of upper limb muscle function and tension, and it is one of the important indicators of aging in the human population. This is one of the few studies to examined the relationship between grip strength and retinal thickness and choroidal thickness in a large sample size of patients with diabetes mellitus.
- Greater hand grip strength was found to be significantly associated with thicker retinal and choroidal thickness in diabetic patients, and grip strength may provide an easily-administered marker of retinal health in diabetic patients.
- Causal inferences could not be inferred due to the cross-sectional design of the study.
- The dynamic changes in grip strength and their impact on retinal and choroidal thickness are warranted to be explored in longitudinal studies.

Introduction

Diabetes has become a growing health problem, which can cause cardiovascular diseases and death.¹ Diabetic retinopathy may lead to severe visual disorders. One in every 11 adults in the world has diabetes, and it was estimated that 415 million people between the ages of 20 and 79 had diabetes in 2015, and it is expected to reach 642 million people by 2040.² Among the diabetes patients in this study, 34.6% had diabetic retinopathy (DR), accounting for 2.6% of all blindness.^{3 4} At present, optical coherence tomography (OCT) examinations used in clinics provide an accurate reflection of fundus changes, but widespread performance of this approach is expensive and inconvenient.

Grip strength is an indicator of upper limb muscle function and tension, and it is one of the important indicators of aging in the human population.⁵ Handgrip strength is easy to measure and has great clinical significance. Many studies have reported that low grip strength is associated with type 2 diabetes.^{6 7} Increased grip strength was independently associated with a lower prevalence of prediabetes in Chinese adults.⁸ Fukuda et al.⁹ reported that muscle quality was significantly associated with the presence of DR among patients with type 2 diabetes. Evidence has suggested that the size of a patient's retinal artery is independently related to grip strength in elderly patients living in Scotland.¹⁰ The Beaver Dam Eye Study indicated that men with increased handgrip strength had lower odds of early and later age-related macular degeneration by 28% and 55%, respectively.¹¹

The retina and choroid are important layers in the eyeball, and retinal and choroidal thickness are both useful indicators of overall eye health.¹² The choroid provides the retinal pigment epithelium with metabolic support and nourishes the optic nerve, choroid and outer retina. The structure and function of the choroidal vasculature is essential for the retina to function properly.¹³ Abnormalities of retinal and choroidal thickness have been involved in the development and progression of DR. The choroid in patients with diabetes but without DR is thinner than that in healthy people but

thicker than that in patients with DR.¹⁴ Thinning of the choroid is considered to be an early sign of diabetes in patients with no clinical DR.¹⁵ To the best of our knowledge, the relationship between grip strength and retinal or choroidal thickness has not been explored in previous studies. Therefore, to address this important consideration, the objective of this study was to determine the relationships between grip strength and retinal or choroidal thickness in Chinese patients with type 2 diabetes mellitus using swept-source optical coherence tomography (SS-OCT).

Methods

Subjects

This cross-sectional study was performed at the Zhongshan Ophthalmic Centre (ZOC), Sun Yat-sen University, China. The protocol of this study was approved by the Institute Ethics Committee of (ZOC). The study was performed in accordance with the tenets of the Helsinki Declaration. All participants signed a written informed consent form before entering.

Eligible subjects included ocular treatment-naïve patients with type 2 diabetes between the ages of 30 and 80 years old. Participants were excluded if they had any of the following conditions: evidence of diabetic retinopathy based on ETDRS 7 photography, an axial length > 30 mm, a spherical equivalent > -10D, a cylinder degree of 3.0 diopters or more in either eye, anisometropia of 2.0 diopters or more, a C/D ratio ≥ 0.5 or inter-eye asymmetry ≥ 0.2 , a history of ocular disease (except for light cataract) or trauma, a history of ocular laser or surgical interventions and/or a history of systemic diseases such as stroke, chronic kidney CKD, cancer or chronic obstructive pulmonary disease (COPD), history of diabetic polyneuropathy.¹⁶

Systemic and laboratory tests

Systemic data was collected via standardized questionnaires, including age, sex, length of time patient has had diabetes, medication compliance, presence of other systematic chronic diseases and risk factors. Height, weight, systolic blood pressure

(SBP) and diastolic blood pressure (DBP) were also measured. Blood and urine samples were obtained from all patients, and they were analysed for the following parameters: renal profiles that included serum creatinine, microalbuminuria and other parameters, including haemoglobin A1c (HbA1c), total cholesterol (TC), high-density lipoprotein cholesterol (HDL-C), low-density lipoprotein cholesterol (LDL-C) and triglyceride (TG).

Hand Grip Strength (HGS)

Hand grip strength (HGS) is a proxy of muscle mass and strength. HGS was measured twice for each hand with a dynamometer (Yuejian™ WL-1000, Nantong, China) in kilograms (kg). A trained examiner explained and demonstrated the protocol to each participant. The grip test was performed in the standing position unless the participant was physically limited. The participant's shoulder was abducted and neutrally rotated, with the elbow at 90° flexion, and the forearm and wrist were in a neutral position. Each participant was randomly directed to begin the test with his or her dominant or nondominant hand and was asked to use one of their hands to squeeze the handle of the dynamometer "as hard as possible for a couple of seconds". The test was then repeated for the other hand. Each hand was tested twice, alternating hands between tests. The mean score of the four measurements that included both hands was used in the analysis. As prior or present conditions may affect a person's grip strength, participants that had hand surgery within the past 6 months or severe hand pain or arthritis in the wrists were excluded from the HGS measurement.

Ocular examination

Comprehensive ocular examinations were conducted for all participants. The anterior and posterior segments were evaluated by slit-lamp biomicroscopy and ophthalmoscopy. The evaluations of visual acuity and intraocular pressure (IOP) were regularly performed. Ocular biometric parameters were obtained using optical low-coherence reflectometry (Lenstar LS900; Haag-Streit AG, Koeniz, Switzerland). If the AL exceeded the measurement range of the Lenstar (32 mm), coherence

interferometry (IOL Master; Carl Zeiss Meditec, Oberkochen, Germany) was used instead. Auto refraction was measured by an autorefractor (KR8800; Topcon, Tokyo, Japan) after pupil dilation. The retinal photography was performed in accordance with ETDRS 7 field criteria using a digital fundus camera (Canon CR-2, Tokyo, Japan) after pupil dilation. DR was diagnosed using international clinical diabetic retinopathy and diabetic macular edema disease severity scales.

SS-OCT Imaging

The SS-OCT (DRI OCT-2 Triton; Topcon, Tokyo, Japan) instrument was used to obtain high-definition retinal and choroidal images. This device has the speed of 100,000 A-scans/s and yields an 8 μ m axial resolution in tissue. The method of retinal and choroidal imaging with SS-OCT has been described elsewhere in detail.¹⁷

Three-dimensional (3-D) imaging scans were obtained using 6 \times 6mm raster scan protocol centred on the macula. The resulting images were analysed with the automated layer segmentation software, which is built into the SS-OCT system. The RT and CT in the nine subfields defined by the ETDRS were automatically calculated and displayed. The ETDRS grid divides the macular into two rings, including the inner and outer rings, which were 1-3 mm and 3-6 mm, respectively. The individual grids are referred to as the centre field, inner superior, inner nasal, inner inferior, inner temporal, outer superior, outer nasal, outer inferior and outer temporal (Figure 1). In addition, the average RT and CT in all nine grids were calculated, and all OCT scans were performed by the same experienced technician who was blind to the study protocol. Before the scan was conducted, it was verified that none of the patients had consumed drinks with caffeine or alcohol or had taken analgesic medications for at least 24 h prior to the procedure. Only subjects with eligible images (i.e., image quality index > 50, without eye movement, without artefacts and without segmentation failure) were included in this study.

Statistical analyses

According to the scores of grip strength from low to high, the participants were

divided into four groups: Q1, Q2, Q3 and Q4. The Kolmogorov-Smirnov test conducted to verify the normal distribution. The Fisher's exact test was used for categorical variables. After normality was confirmed, the ANOVA test was conducted to evaluate the inter-group difference of demographic, systemic and ocular parameters. Bivariate scatter plots were created to display the potential factors affecting CT. Linear regression analyses were performed to assess the association of CT with demographic or ocular parameters, such as age, sex, AL, HbA1c and other parameters previously mentioned.¹⁷ Univariate analysis showed that the predictive variables were significant, which were then entered into the final multivariate equation. A *P* value <0.05 was considered statistically significant. All analyses were performed using Stata, version 14.0 (Stata Corporation, College Station, TX, USA).

Results

A total of 1,029 patients without any evidence of DR were included in the present study, which included 616 (59.86%) female with a mean age of 64.5 ± 7.7 years. Table 1 presents the characteristics of the participants. Differences in gender, age, height, weight, total cholesterol, serum creatinine, HDL-C, CCT and axial length between each group were found to be statistically significant ($P < 0.05$).

The average retinal and choroidal thicknesses for all participants were 274.4 ± 15.3 μm and 184.5 ± 73.6 μm , respectively. Table 2 presents the distribution of retinal thickness and choroidal thickness in each sector across groups. There were statistically significant differences in retinal and choroidal thicknesses among the four groups ($P < 0.001$, retinal thickness in the outer inferior $P=0.0483$). Both retinal and choroidal thicknesses increased in the higher quartile of grip strength (Figure 2).

Table 3 presents the association between grips strength and retinal thickness based on multivariable regression analyses. After adjusting for age and gender, the average retinal and choroidal thickness increased by 0.14 μm ($P=0.011$) and 0.57 μm ($P=0.037$) for each kg of increased grip strength. There was a statistically significant association

between grip strength scores and retinal thickness in at least one group in each region except the outer inferior. After making adjustments for age, sex, axial length, HbA1c, duration of diabetes, insulin usage, height, weight and systolic and diastolic blood pressure, the average retinal and choroidal thickness increased by 0.13 μm ($P=0.024$) and 0.65 μm ($P=0.013$) for each kg of increased grip strength. There was a statistically significant association between grip strength scores and retinal thickness in at least one group in each region except the outer inferior, the inner inferior, nasal and temporal.

There was a statistically significant correlation between grip strength and choroidal thickness in at least one group in each region, except in the upper and inner superior regions. There was a statistically significant correlation between grip strength and choroidal thickness in at least one group in each region, except in the outer superior region (Table 4).

Discussion

This cross-sectional study reported the relationship existing between handgrip strength and diabetes, analyzing retinal and choroidal thickness. Authors stratified the grip strength results in 4 groups and all the analysis were conducted explaining the differences between these groups that included a large population with aged between 30 and 80. We found significant differences in retinal thickness and choroidal thickness among people with different grip strengths. Multivariate analysis suggested that grip strength in diabetic patients without DR was strongly significant associated with retinal thickness and choroidal thickness, independent of age, gender, axial length, HbA1c, diabetes duration, use of insulin, height, weight, systolic blood pressure and diastolic blood pressure.

The results revealed there was an association between grip strength and retinal or choroidal thickness. Handgrip strength has been shown to be an indicator of aging.¹⁸ A decrease in grip strength associated with aging correlates with the development of

age-related disorders.¹⁹ Multiple studies have explored the association between handgrip strength and cardiovascular diseases, cognition and all-cause mortality.^{5 6}
²⁰⁻²³ In addition to age, the results showed that grip strength is also associated with gender, height and weight.²⁴ Therefore, these factors were adjusted in the analysis. The results showed that grip strength was correlated with retinal or choroid thickness in 9 ETDRS domains. The lower the grip strength score was, the thinner the retina and choroid tended to be. The thinning of the retina and choroid can seriously affect the visual function in patients, and it can even lead to blindness.²⁵

Lower grip strength scores were associated with thinner retinal or choroidal layers. A possible explanation for this may be related to the blood vessels linking them. The retina and choroid contain a significant number of blood vessels, especially the choroid.²⁶ Their thickness often varies greatly depending on the filling state of the blood vessels. Blood vessels are centres for transporting oxygen and nutrients. Thinning of the retina and choroid indicates a decrease in the density and velocity of blood, thus affecting the delivery of oxygen and nutrients to muscles.²⁷ It leads to a weakening of muscle strength, which is reflected in the decline in a patient's grip strength score. In addition, diabetic patients had accelerated aging process, which leads to loss of muscle strength. The presence and severity of diabetic neuropathy was related to gradual loss of muscle strength, and also related to retinal and choroidal thickness. Diabetic nephropathy contributed to loss of muscle strength, and altered retinal and choroidal thickness is a hallmark of renal function in diabetic patients.

This finding has important implications for the development of earlier diagnosis methods for diabetic retinal and choroidal changes. Compared with the OCT examination, handgrip strength measurement is simple and inexpensive, which makes it an economically viable method used in the early evaluation of the progress of fundus lesions in diabetic patients and to monitor their health status.^{23 28} It can be used to implement effective intervention earlier and to improve treatments designed to better control diseases in diabetic patients. Follow-up studies may explore whether

grip strength training can slow down the progression of retinal and choroidal thinning. Moreover, while grip strength may provide a useful indicator of retinal health in diabetic patients, further studies are needed to determine directionality and causality, and examining whether improving muscle strength has an influence on retinal and choroidal thickness is also important.

As stated previously, to the best of our knowledge, the present study is the first to identify an association between grip strength and retinal or choroidal thickness. It is a new direction for future research on grip strength. In addition, the subjects covered a wide range of ages, which differs from most previous studies on grip strength that focused on the elderly. The subjects in this study ranged from 30-80 years old, with an average age of 64.5 ± 7.7 years. Moreover, the handgrip strength score was measured by the Jamar J00105 hydraulic manual dynamometer, which has been recommended as a standard tool for handgrip strength testing by the American Society of Hand Therapy (ASHT) and is considered to be the gold standard for handgrip strength testing. The thickness of the retina and choroid was obtained by the same experienced technician using the latest SS-OCT to ensure the results are accurate and reliable. However, further study with larger sample sizes are needed to confirm our findings.

There are several limitations associated with this result. First, this study is a cross-sectional study, which prevents cause-effect inference. In addition, the dynamic changes in grip strength and their impact on retinal and choroidal thickness were not evaluated. Secondly, investigators have just begun to explore the association of grip strength and retinal or choroidal thickness, and more information is needed to gain a better understanding of the connection between them. This study did not explore the long-term impact of grip strength changes on retinal and choroidal thickness or track the progress of diabetes and ocular diseases in each patient. Finally, only patients without DR were included. The generalizability of the findings was therefore reduced.

Conclusions

In summary, there was significant association between grip strength and retinal and choroidal thickness. Greater hand grip strength was found to be significantly associated with thicker retinal and choroidal thickness in diabetic patients, and grip strength may provide an easily-administered marker of retinal health in diabetic patients. Further studies are needed to determine the directionality and causality, and such studies must examine whether improving muscle strength has an effect on retinal and choroidal thickness.

Acknowledgements: None

Contributors: Design and conduct of the study (WW, YL, WH); Collection, management, analysis and interpretation of the data (ZQ, WW, YT, MH, LW, YL, WH); Preparation of the manuscript (ZQ, WW, WH); Review and final approval of the manuscript (all authors).

Funding: This research was supported in part by the National Natural Science Foundation of China (81570843; 81530028; 81721003).

Conflict of interest: There are no conflicts of interest. None of the authors has financial or other conflicts of interest concerning this study.

Patient consent for publication: Not required.

Ethics approval: The protocol was approved by the Committee of Zhongshan Ophthalmic Center (protocol number IRB#2017-05-0621).

Provenance and peer review: Not commissioned; externally peer reviewed.

Data availability statement: Data are available upon reasonable request.

References:

1. Valencia WM, Florez H. How to prevent the microvascular complications of type 2 diabetes beyond glucose control. *BMJ* 2017; 356:i6505.
2. NCD Risk Factor Collaboration (NCD-RisC). Worldwide trends in diabetes since 1980: a pooled analysis of 751 population-based studies with 4.4 million participants. *Lancet* 2016; 387:1513-1530.
3. Yau JW, Rogers SL, Kawasaki R, et al. Global prevalence and major risk factors of diabetic retinopathy. *Diabetes Care* 2012; 35:556-64.
4. Leasher JL, Bourne RR, Flaxman SR, et al. Global Estimates on the Number of People Blind or Visually Impaired by Diabetic Retinopathy: A Meta-analysis From 1990 to 2010. *Diabetes Care* 2016; 39:1643-9.
5. Celis-Morales CA, Welsh P, Lyall DM, et al. Associations of grip strength with cardiovascular, respiratory, and cancer outcomes and all cause mortality: prospective cohort study of half a million UK Biobank participants. *BMJ* 2018; 361:k1651.
6. Celis-Morales CA, Petermann F, Hui L, et al. Associations Between Diabetes and Both Cardiovascular Disease and All-Cause Mortality Are Modified by Grip Strength: Evidence From UK Biobank, a Prospective Population-Based Cohort Study. *Diabetes Care* 2017; 40:1710-1718.
7. Ntuk UE, Celis-Morales CA, Mackay DF, et al. Association between grip strength and diabetes prevalence in black, South-Asian, and white European ethnic groups: a cross-sectional analysis of 418 656 participants in the UK Biobank study. *Diabet Med* 2017; 34:1120-1128.
8. Hu S, Gu Y, Lu Z, et al. Relationship Between Grip Strength and Prediabetes in a Large-Scale Adult Population. *Am J Prev Med* 2019; 56:844-851.
9. Fukuda T, Bouchi R, Takeuchi T, et al. Association of diabetic retinopathy with both sarcopenia and muscle quality in patients with type 2 diabetes: a cross-sectional study. *BMJ Open Diabetes Res Care* 2017; 5:e000404.
10. Sumukadas D, McMurdo M, Pieretti I, et al. Association between retinal vasculature and muscle mass in older people. *Arch Gerontol Geriatr* 2015;

61:425-8.

11. Klein R, Klein BE, Knudtson MD. Frailty and age-related macular degeneration: the Beaver Dam Eye Study. *Am J Ophthalmol* 2005; 140:129-31.
12. Tan KA, Gupta P, Agarwal A, et al. State of science: Choroidal thickness and systemic health. *Surv Ophthalmol* 2016; 61:566-81.
13. Ferrara D, Waheed NK, Duker JS. Investigating the choriocapillaris and choroidal vasculature with new optical coherence tomography technologies. *Prog Retin Eye Res* 2016; 52:130-55.
14. Melancia D, Vicente A, Cunha JP, et al. Diabetic choroidopathy: a review of the current literature. *Graefes Arch Clin Exp Ophthalmol* 2016; 254:1453-61.
15. Kim M, Ha MJ, Choi SY, et al. Choroidal vascularity index in type-2 diabetes analyzed by swept-source optical coherence tomography. *Sci Rep* 2018; 8:70.
16. Nomura T, Ishiguro T, Ohira M, et al. Diabetic polyneuropathy is a risk factor for decline of lower extremity strength in patients with type 2 diabetes. *J Diabetes Investig* 2018; 9:186-192.
17. Wang W, He M, Zhong X. Sex-Dependent Choroidal Thickness Differences in Healthy Adults: A Study Based on Original and Synthesized Data. *Curr Eye Res* 2018; 43:796-803.
18. Khanna RC, Murthy GV, Marmamula S, et al. Longitudinal Andhra Pradesh Eye Disease Study: rationale, study design and research methodology. *Clin Exp Ophthalmol* 2016; 44:95-105.
19. Ma T, Lu D, Zhu YS, et al. ACTN3 genotype and physical function and frailty in an elderly Chinese population: the Rugao Longevity and Ageing Study. *Age Ageing* 2018.
20. Yates T, Zaccardi F, Dhalwani NN, et al. Association of walking pace and handgrip strength with all-cause, cardiovascular, and cancer mortality: a UK Biobank observational study. *Eur Heart J* 2017; 38:3232-3240.
21. Celis-Morales CA, Lyall DM, Anderson J, et al. The association between physical activity and risk of mortality is modulated by grip strength and cardiorespiratory fitness: evidence from 498 135 UK-Biobank participants. *Eur Heart J* 2017;

- 38:116-122.
22. Firth J, Stubbs B, Vancampfort D, et al. Grip Strength Is Associated With Cognitive Performance in Schizophrenia and the General Population: A UK Biobank Study of 476559 Participants. *Schizophr Bull* 2018.
 23. Yeung C, Au YS, Fong S, et al. Lean mass, grip strength and risk of type 2 diabetes: a bi-directional Mendelian randomisation study. *Diabetologia* 2019; 62:789-799.
 24. Spruit MA, Sillen MJ, Groenen MT, et al. New normative values for handgrip strength: results from the UK Biobank. *J Am Med Dir Assoc* 2013; 14:775.e5-11.
 25. Shao L, Xu L, Wei WB, et al. Visual acuity and subfoveal choroidal thickness: the Beijing Eye Study. *Am J Ophthalmol* 2014; 158:702-709.e1.
 26. Nickla DL, Wallman J. The multifunctional choroid. *Prog Retin Eye Res* 2010; 29:144-68.
 27. Schuster AK, Leuschner A, Feretos C, et al. Choroidal thickness is associated with cardiovascular risk factors and cardiac health: the Gutenberg Health Study. *Clin Res Cardiol* 2019.
 28. Kim Y, Wijndaele K, Lee DC, et al. Independent and joint associations of grip strength and adiposity with all-cause and cardiovascular disease mortality in 403,199 adults: the UK Biobank study. *Am J Clin Nutr* 2017; 106:773-782.

Figure legends

Figure 1. Illustration of measurements of retinal and choroidal thickness in ETDRS 9 sectors using SS-OCT. (A) Retinal thickness; (B) Choroidal thickness.

Figure 2. Boxplots showing the distribution of retinal and choroidal thickness stratified by quartiles of the handgrip strength. (A) Average retinal thickness versus grip strength; (B) Retinal thickness in central field versus grip strength; (C) Average choroidal thickness versus grip strength; (D) Choroidal thickness in central field versus grip strength.

Table 1. Demographic and clinical characteristics of diabetic patients without retinopathy.

Characteristics	All	Quarter of grip strength				P-value
		Q1 (Lowest)	Q2	Q3	Q4 (Highest)	
No. of subjects	1029	258	260	255	256	-
Female, %	616(59.86%)	224(86.82%)	215(82.69%)	129(50.59%)	48(18.75%)	<0.001
Use of insulin, %	163(16.03%)	40(15.69%)	39(15.18%)	39(15.42%)	45(17.86%)	0.836
Age, year	64.5±7.7	66.2±7.2	64.7±7.4	63.6±7.8	63.6±8.1	<0.001
Duration of diabetes, year	8.1±6.6	8.7±6.7	8.3±6.7	7.5±6.3	8.1±6.6	0.214
HbA1c, %	6.8±1.3	6.8±1.2	6.7±1.3	6.8±1.3	6.9±1.4	0.507
Height, cm	160.1±8.1	155.4±6.9	157.8±6.7	161.7±6.9	165.5±8.0	<0.001
Weight, kg	63.7±11.5	59.5±9.9	60.7±9.9	65.0±10.0	69.7±13.0	<0.001
Systolic blood pressure, mm Hg	133.7±18.5	132.6±19.2	134.3±18.4	134.1±18.2	133.9±18.1	0.714
Diastolic blood pressure, mm Hg	70.7±10.4	69.6±10.8	70.3±9.9	71.4±10.0	71.4±10.9	0.112
Total cholesterol, mmol/L	4.8±1.0	4.9±1.0	5.0±1.1	4.8±1.0	4.6±1.0	0.001
Serum creatinine, µmol/L	70.3±19.3	68.0±20.2	65.2±19.8	71.3±18.3	76.6±17.0	<0.001
HDL-c, mmol/L	1.3±0.4	1.4±0.4	1.4±0.4	1.3±0.4	1.2±0.4	<0.001
LDL-c, mmol/L	3.1±0.9	3.1±0.9	3.2±1.0	3.1±0.9	3.0±0.9	0.122
Triglycerides, mmol/L	2.3±1.6	2.4±1.6	2.3±1.5	2.3±1.7	2.3±1.7	0.976
C-reactive protein, mg/L	2.7±7.4	2.8±3.5	3.1±12.3	2.4±3.8	2.4±6.5	0.658
Microalbuminuria, mg/mL	4.1±14.9	4.7±14.7	4.9±23.0	3.3±8.0	3.6±9.0	0.530
BCVA, logMAR	0.2±0.1	0.2±0.1	0.2±0.1	0.2±0.2	0.2±0.1	0.133
Intraocular pressure, mmHg	16.2±2.7	16.4±2.8	16.2±2.6	15.9±2.7	16.1±2.8	0.278
Central corneal thickness, µm	546.1±31.5	545.8±29.6	544.8±30.8	542.8±33.1	550.9±31.9	0.026
Axial length, mm	23.6±1.1	23.4±1.0	23.5±1.2	23.6±1.1	23.8±1.0	<0.001

BCVA=best corrected visual acuity. Bold indicates statistically significant.

Table 2. Differences of retinal and choroidal thickness among groups by quartiles of grips strength.

Parameters	All	Quartile 1	Quartile 2	Quartile 3	Quartile 4	P-value
Retinal thickness						
Outer Superior, μm	265.8 \pm 18.9	261.8 \pm 15.6	265.9 \pm 20.0	266.6 \pm 22.7	268.8 \pm 15.9	<0.001
Inner Superior, μm	301.5 \pm 18.3	296.6 \pm 15.1	301.3 \pm 19.1	302.3 \pm 19.7	305.9 \pm 18.1	<0.001
Outer Temporal, μm	251.5 \pm 16.9	247.4 \pm 15.1	250.5 \pm 18.2	252.6 \pm 17.1	255.5 \pm 15.8	<0.001
Inner Temporal, μm	288.8 \pm 17.7	284.4 \pm 15.8	286.8 \pm 17.2	290.2 \pm 18.8	294.0 \pm 17.6	<0.001
Central field, μm	228.4 \pm 23.5	222.5 \pm 19.1	225.6 \pm 22.0	231.6 \pm 25.7	234.2 \pm 25.0	<0.001
Inner Nasal, μm	300.9 \pm 18.4	296.4 \pm 16.1	299.6 \pm 18.9	301.9 \pm 18.5	305.6 \pm 18.8	<0.001
Outer Nasal, μm	280.0 \pm 17.9	276.3 \pm 15.8	279.2 \pm 18.7	280.6 \pm 18.6	284.0 \pm 17.6	<0.001
Inner Inferior, μm	297.2 \pm 19.6	292.8 \pm 17.2	295.8 \pm 20.5	297.9 \pm 19.7	302.5 \pm 19.8	<0.001
Outer Inferior, μm	255.8 \pm 19.0	253.1 \pm 15.1	255.7 \pm 24.3	256.6 \pm 18.1	257.6 \pm 17.0	0.0483
Average, μm	274.4 \pm 15.3	270.2 \pm 12.9	273.4 \pm 15.6	275.6 \pm 16.1	278.7 \pm 15.1	<0.001
Choroidal thickness						
Outer Superior, μm	192.5 \pm 75.1	178.2 \pm 74.2	188.9 \pm 74.1	193.7 \pm 74.0	209.4 \pm 75.3	<0.001
Inner Superior, μm	202.0 \pm 81.5	187.2 \pm 81.1	200.2 \pm 79.5	201.1 \pm 82.1	219.7 \pm 80.2	<0.001
Outer Temporal, μm	173.9 \pm 65.0	159.1 \pm 59.6	177.0 \pm 62.8	170.6 \pm 67.9	189.0 \pm 66.2	<0.001
Inner Temporal, μm	195.4 \pm 74.4	179.3 \pm 69.1	199.1 \pm 72.5	191.1 \pm 77.3	212.3 \pm 74.9	<0.001
Central field, μm	201.9 \pm 83.8	184.9 \pm 80.4	202.6 \pm 83.2	199.1 \pm 85.8	221.0 \pm 82.4	<0.001
Inner Nasal, μm	189.6 \pm 85.5	171.4 \pm 81.0	190.6 \pm 85.0	189.5 \pm 86.5	207.2 \pm 86.1	<0.001
Outer Nasal, μm	149.9 \pm 79.5	132.9 \pm 72.0	151.5 \pm 80.4	153.3 \pm 81.5	162.0 \pm 81.4	<0.001
Inner Inferior, μm	188.2 \pm 83.5	166.4 \pm 77.2	190.5 \pm 83.6	187.6 \pm 83.4	208.6 \pm 84.7	<0.001
Outer Inferior, μm	167.0 \pm 78.1	147.0 \pm 70.2	169.1 \pm 78.5	166.8 \pm 79.3	185.3 \pm 79.7	<0.001
Average, μm	184.5 \pm 73.6	167.4 \pm 69.1	185.5 \pm 72.9	183.6 \pm 74.8	201.6 \pm 73.8	<0.001

Bold indicates statistically significant.

Table 3. Association of grip strength and retinal thickness by multivariate linear regression analyses.

Retinal thickness	Model 1*				Model 2†		
	Coefficient	95%CI	P-value		Coefficient	95%CI	P-value
Average, μm							
Quantile 1	1.00 (Ref)				1.00 (Ref)		
Quantile 2	2.16	(-0.28 to 4.61)	0.083		1.71	(-0.75 to 4.168)	0.174
Quantile 3	2.10	(-0.48 to 4.69)	0.111		1.33	(-1.28 to 3.935)	0.319
Quantile 4	3.68	(0.81 to 6.55)	0.012		3.35	(0.44 to 6.256)	0.024
Per 1-kg increase	0.14	(0.03 to 0.25)	0.011		0.13	(0.02 to 0.24)	0.024
Central field, μm							
Quantile 1	1.00 (Ref)				1.00 (Ref)		
Quantile 2	2.50	(-1.42 to 6.43)	0.211		1.90	(-2.04 to 5.831)	0.345
Quantile 3	5.08	(0.92 to 9.24)	0.017		4.62	(0.45 to 8.790)	0.030
Quantile 4	4.53	(-0.08 to 9.13)	0.054		4.15	(-0.49 to 8.801)	0.080
Per 1-kg increase	0.16	(-0.02 to 0.33)	0.082		0.15	(-0.03 to 0.32)	0.109
Outer Superior, μm							
Quantile 1	1.00 (Ref)				1.00 (Ref)		
Quantile 2	3.03	(-0.08 to 6.14)	0.056		2.65	(-0.43 to 5.725)	0.091
Quantile 3	2.49	(-0.80 to 5.78)	0.138		1.47	(-1.79 to 4.734)	0.375
Quantile 4	4.44	(0.80 to 8.08)	0.017		3.74	(0.11 to 7.373)	0.043
Per 1-kg increase	0.19	(0.05 to 0.33)	0.008		0.16	(0.02 to 0.30)	0.022
Outer Inferior, μm							
Quantile 1	1.00 (Ref)				1.00 (Ref)		
Quantile 2	1.49	(-1.65 to 4.62)	0.352		1.27	(-1.83 to 4.373)	0.420
Quantile 3	1.17	(-2.15 to 4.49)	0.489		0.49	(-2.79 to 3.778)	0.768

Quantile 4	1.86	(-1.82 to 5.53)	0.321		1.90	(-1.76 to 5.561)	0.308
Per 1-kg increase	0.06	(-0.08 to 0.21)	0.368		0.06	(-0.08 to 0.20)	0.377
Outer Nasal, μm							
Quantile 1	1.00 (Ref)				1.00 (Ref)		
Quantile 2	1.72	(-1.16 to 4.60)	0.243		1.63	(-1.20 to 4.475)	0.259
Quantile 3	1.16	(-1.89 to 4.21)	0.457		0.55	(-2.46 to 3.557)	0.721
Quantile 4	3.64	(0.26 to 7.02)	0.035		3.46	(0.11 to 6.810)	0.043
Per 1-kg increase	0.14	(0.01 to 0.27)	0.031		0.14	(0.01 to 0.26)	0.040
Outer Temporal, μm							
Quantile 1	1.00 (Ref)				1.00 (Ref)		
Quantile 2	1.94	(-0.78 to 4.66)	0.162		1.83	(-0.80 to 4.449)	0.172
Quantile 3	1.88	(-1.01 to 4.76)	0.202		1.02	(-1.76 to 3.799)	0.472
Quantile 4	3.36	(0.17 to 6.56)	0.039		2.72	(-0.37 to 5.818)	0.085
Per 1-kg increase	0.14	(0.02 to 0.27)	0.022		0.12	(0.00 to 0.24)	0.053
Inner Superior, μm							
Quantile 1	1.00 (Ref)				1.00 (Ref)		
Quantile 2	3.62	(0.61 to 6.63)	0.018		3.18	(0.13 to 6.226)	0.041
Quantile 3	2.39	(-0.80 to 5.58)	0.142		1.68	(-1.54 to 4.912)	0.306
Quantile 4	4.52	(0.99 to 8.05)	0.012		4.46	(0.86 to 8.053)	0.015
Per 1-kg increase	0.15	(0.01 to 0.29)	0.032		0.14	(0.00 to 0.28)	0.046
Inner Inferior, μm							
Quantile 1	1.00 (Ref)				1.00 (Ref)		
Quantile 2	1.73	(-1.47 to 4.94)	0.289		0.88	(-2.29 to 4.059)	0.586
Quantile 3	1.01	(-2.39 to 4.40)	0.561		0.01	(-3.36 to 3.377)	0.995
Quantile 4	3.51	(-0.25 to 7.27)	0.067		3.38	(-0.37 to 7.133)	0.077

Per 1-kg increase	0.15	(0.00 to 0.29)	0.048		0.13	(-0.01 to 0.28)	0.069
Inner Nasal, μm							
Quantile 1	1.00 (Ref)				1.00 (Ref)		
Quantile 2	2.15	(-0.89 to 5.18)	0.165		1.40	(-1.67 to 4.473)	0.372
Quantile 3	2.02	(-1.19 to 5.24)	0.217		1.25	(-2.00 to 4.509)	0.451
Quantile 4	3.86	(0.30 to 7.42)	0.034		3.50	(-0.13 to 7.124)	0.059
Per 1-kg increase	0.15	(0.01 to 0.28)	0.038		0.13	(-0.01 to 0.27)	0.067
Inner Temporal, μm							
Quantile 1	1.00 (Ref)				1.00 (Ref)		
Quantile 2	1.34	(-1.55 to 4.23)	0.363		0.66	(-2.27 to 3.577)	0.660
Quantile 3	1.82	(-1.24 to 4.88)	0.243		0.91	(-2.18 to 4.008)	0.563
Quantile 4	3.40	(0.02 to 6.79)	0.049		2.84	(-0.61 to 6.287)	0.106
Per 1-kg increase	0.15	(0.02 to 0.28)	0.021		0.13	(0.00 to 0.26)	0.055

Model 1: adjusted for age and sex.

Model 2: adjusted for age, gender, axial length, HbA1c, diabetes duration, use of insulin, height, weight, systolic blood pressure, and diastolic blood pressure.

Bold indicates statistically significant.

Table 4. Association of grip strength and choroidal thickness by multivariate linear regression analyses.

Choroidal thickness	Model 1*				Model 2†		
	Coefficient	95%CI	P-value		Coefficient	95%CI	P-value
Average, μm							
Quantile 1		1.00 (Ref)				1.00 (Ref)	
Quantile 2	13.37	(1.43 to 25.31)	0.028		13.51	(2.26 to 24.75)	0.019
Quantile 3	3.66	(-8.98 to 16.31)	0.570		1.66	(-10.26 to 13.58)	0.784
Quantile 4	17.52	(3.52 to 31.51)	0.014		20.42	(7.14 to 33.69)	0.003
Per 1-kg increase	0.57	(0.03 to 1.11)	0.037		0.65	(0.13 to 1.16)	0.013
Central field, μm							
Quantile 1		1.00 (Ref)				1.00 (Ref)	
Quantile 2	13.00	(-0.82 to 26.83)	0.065		13.47	(0.50 to 26.45)	0.042
Quantile 3	1.02	(-13.63 to 15.66)	0.892		-1.39	(-15.14 to 12.35)	0.842
Quantile 4	18.06	(1.85 to 34.27)	0.029		21.39	(6.08 to 36.70)	0.006
Per 1-kg increase	0.57	(-0.05 to 1.20)	0.072		0.65	(0.06 to 1.24)	0.031
Outer Superior, μm							
Quantile 1		1.00 (Ref)				1.00 (Ref)	
Quantile 2	5.65	(-6.56 to 17.87)	0.364		5.01	(-6.78 to 16.80)	0.405
Quantile 3	0.89	(-12.05 to 13.83)	0.893		-1.34	(-13.84 to 11.15)	0.833
Quantile 4	10.78	(-3.54 to 25.11)	0.140		13.60	(-0.32 to 27.51)	0.055
Per 1-kg increase	0.39	(-0.16 to 0.94)	0.167		0.47	(-0.07 to 1.00)	0.088
Outer Inferior, μm							
Quantile 1		1.00 (Ref)				1.00 (Ref)	
Quantile 2	16.85	(4.29 to 29.40)	0.009		16.59	(4.53 to 28.65)	0.007
Quantile 3	7.11	(-6.19 to 20.40)	0.295		4.83	(-7.95 to 17.61)	0.459

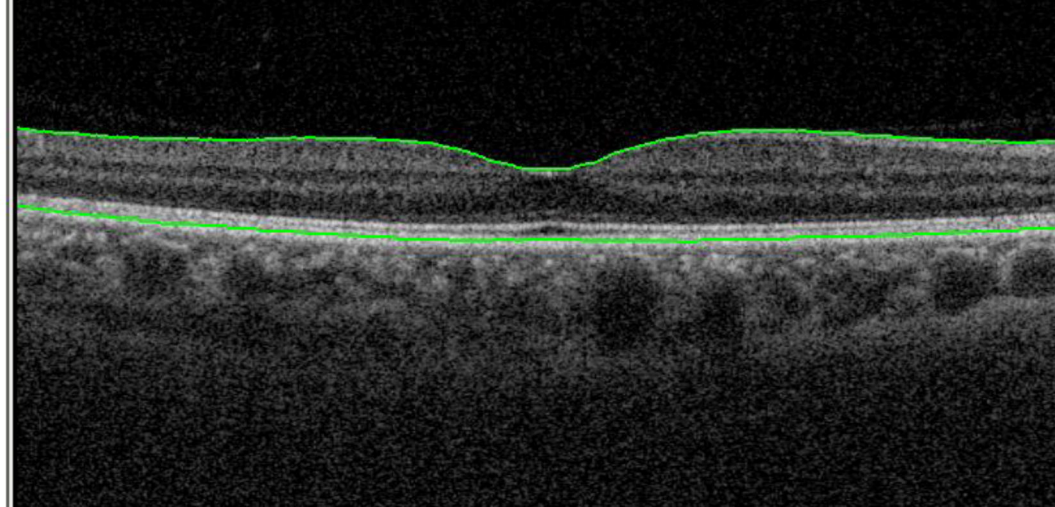
Quantile 4	22.49	(7.77 to 37.21)	0.003		24.36	(10.12 to 38.59)	0.001
Per 1-kg increase	0.73	(0.16 to 1.30)	0.012		0.77	(0.22 to 1.32)	0.006
Outer Nasal, μm							
Quantile 1		1.00 (Ref)				1.00 (Ref)	
Quantile 2	13.79	(0.77 to 26.81)	0.038		14.83	(2.52 to 27.14)	0.018
Quantile 3	8.24	(-5.55 to 22.03)	0.241		7.26	(-5.79 to 20.30)	0.275
Quantile 4	13.45	(-1.82 to 28.71)	0.084		16.76	(2.23 to 31.28)	0.024
Per 1-kg increase	0.38	(-0.21 to 0.97)	0.202		0.47	(-0.09 to 1.03)	0.102
Outer Temporal, μm							
Quantile 1		1.00 (Ref)				1.00 (Ref)	
Quantile 2	14.00	(3.40 to 24.60)	0.010		13.19	(2.87 to 23.50)	0.012
Quantile 3	2.00	(-9.23 to 13.22)	0.727		-0.18	(-11.12 to 10.75)	0.974
Quantile 4	17.94	(5.51 to 30.36)	0.005		20.07	(7.90 to 32.24)	0.001
Per 1-kg increase	0.64	(0.16 to 1.12)	0.009		0.71	(0.24 to 1.18)	0.003
Inner Superior, μm							
Quantile 1		1.00 (Ref)				1.00 (Ref)	
Quantile 2	8.10	(-5.28 to 21.48)	0.235		8.11	(-4.63 to 20.85)	0.212
Quantile 3	0.04	(-14.13 to 14.21)	0.996		-2.23	(-15.73 to 11.28)	0.746
Quantile 4	13.39	(-2.29 to 29.08)	0.094		16.60	(1.56 to 31.64)	0.031
Per 1-kg increase	0.48	(-0.13 to 1.08)	0.122		0.55	(-0.03 to 1.13)	0.062
Inner Inferior, μm							
Quantile 1		1.00 (Ref)				1.00 (Ref)	
Quantile 2	19.10	(5.49 to 32.72)	0.006		19.74	(6.77 to 32.71)	0.003
Quantile 3	8.81	(-5.61 to 23.22)	0.231		7.25	(-6.49 to 20.99)	0.301
Quantile 4	26.26	(10.30 to 42.22)	0.001		29.10	(13.80 to 44.41)	0.000

Per 1-kg increase	0.85	(0.24 to 1.47)	0.007		0.92	(0.33 to 1.52)	0.002
Inner Nasal, μm							
Quantile 1		1.00 (Ref)				1.00 (Ref)	
Quantile 2	13.98	(-0.03 to 27.99)	0.051		14.48	(1.29 to 27.67)	0.031
Quantile 3	4.34	(-10.50 to 19.18)	0.566		2.01	(-11.97 to 15.98)	0.778
Quantile 4	17.43	(1.00 to 33.86)	0.038		20.37	(4.80 to 35.94)	0.010
Per 1-kg increase	0.52	(-0.11 to 1.15)	0.107		0.58	(-0.02 to 1.18)	0.058
Inner Temporal, μm							
Quantile 1		1.00 (Ref)				1.00 (Ref)	
Quantile 2	15.67	(3.43 to 27.91)	0.012		15.97	(4.32 to 27.62)	0.007
Quantile 3	0.55	(-12.41 to 13.51)	0.934		-1.20	(-13.55 to 11.14)	0.848
Quantile 4	17.77	(3.42 to 32.12)	0.015		21.40	(7.65 to 35.15)	0.002
Per 1-kg increase	0.60	(0.04 to 1.15)	0.034		0.71	(0.17 to 1.24)	0.009

Model 1: adjusted for age and sex.

Model 2: adjusted for age, gender, axial length, HbA1c, diabetes duration, use of insulin, height, weight, systolic blood pressure, and diastolic blood pressure.

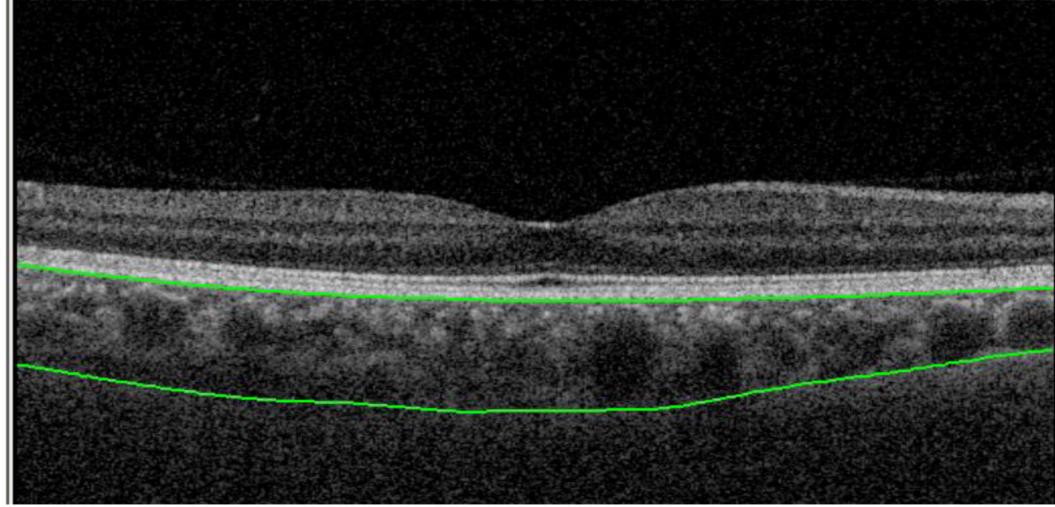
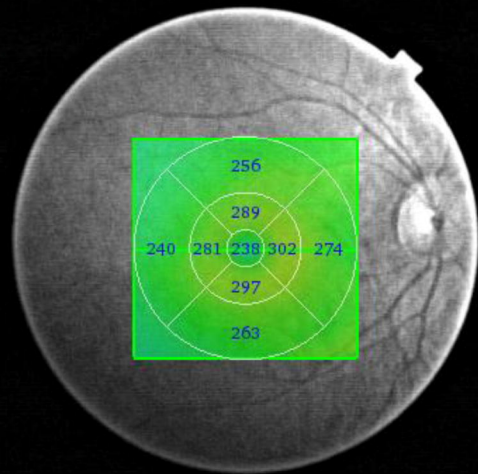
Bold indicates statistically significant.



Overlay

Grid

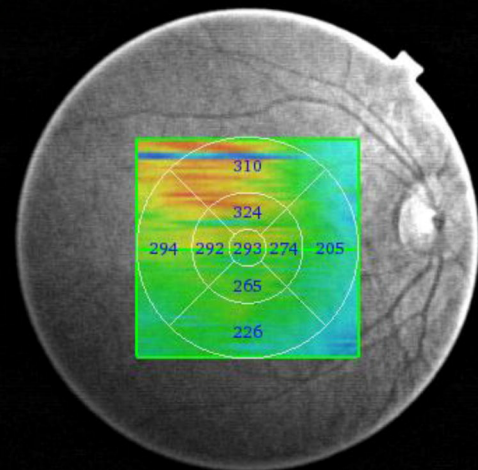
Circle

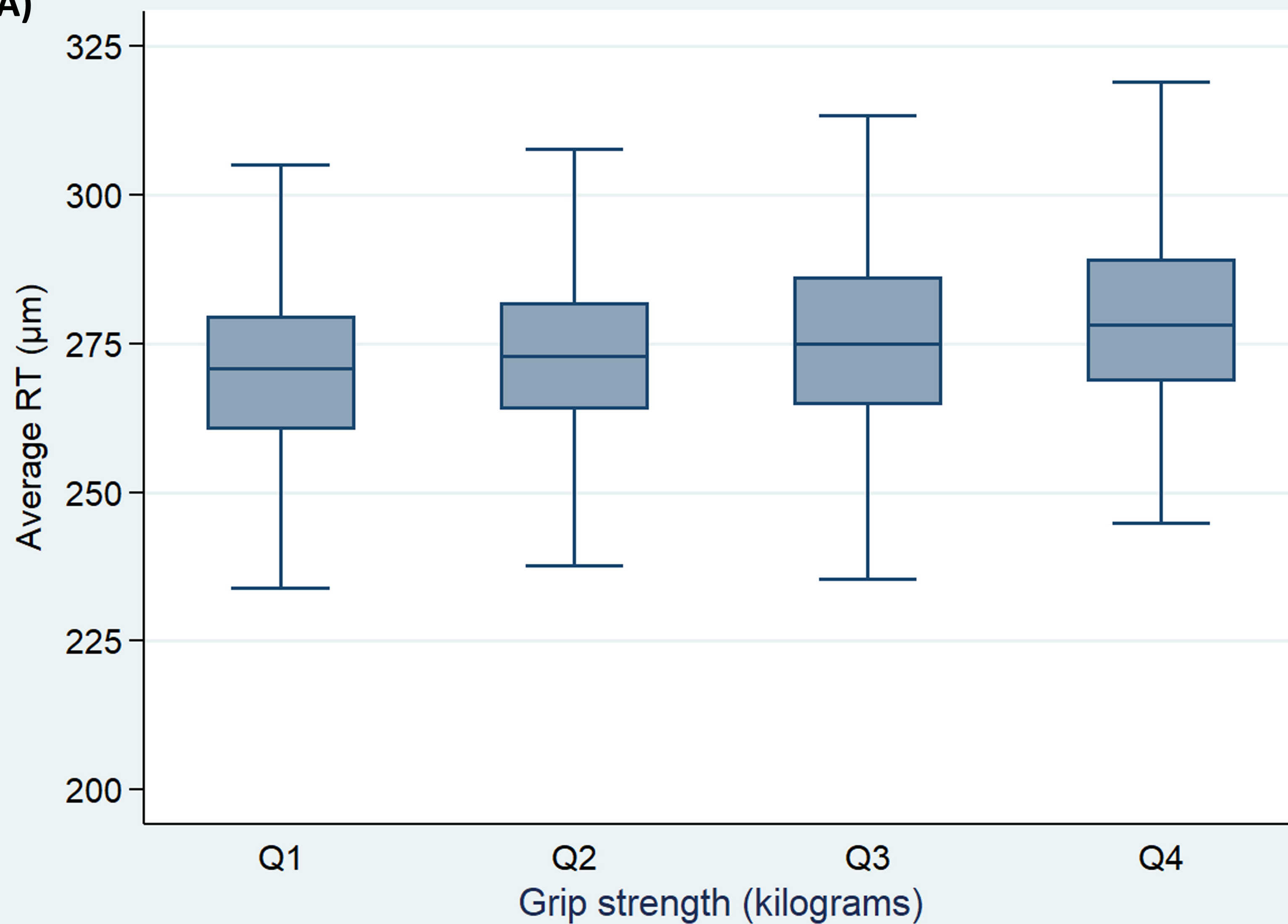
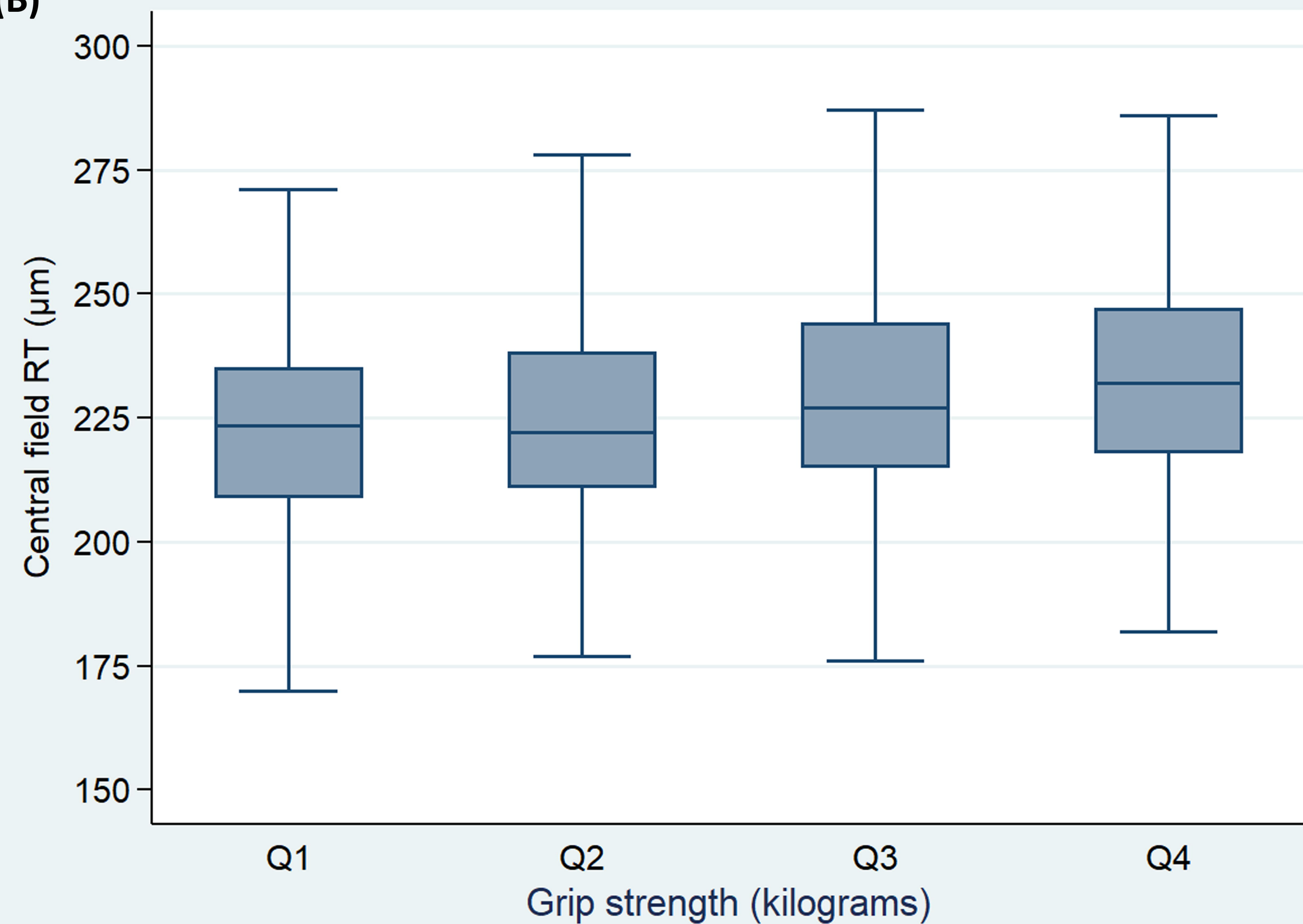
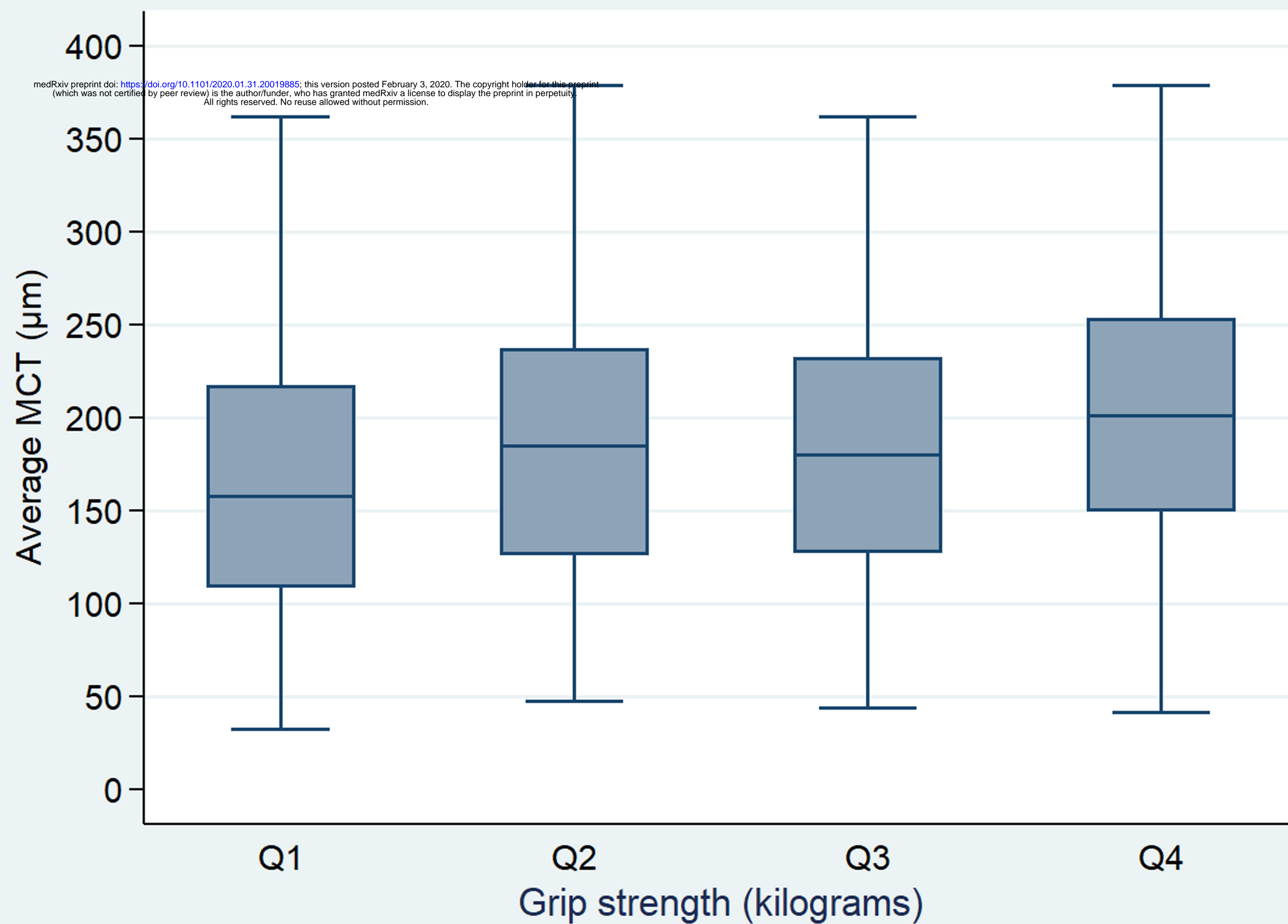


Overlay

Grid

Circle



(A)**(B)****(C)****(D)**