

Dose–response relationship between physical activity and mortality in adults with noncommunicable diseases: A systematic review and meta-analysis of cohort studies

Corresponding author: Dr Wolfgang Geidl, Department of Sport Science and Sport, Friedrich-Alexander University Erlangen-Nürnberg, Gebbertstraße 123b, 91058 Erlangen, Germany; Tel.: +49 9131 85 25457, Fax. +49 9131 85 28198, E-mail: wolfgang.geidl@fau.de

Wolfgang Geidl¹, Sabrina Schlesinger², Eriselda Mino¹, Lorena Miranda¹, Klaus Pfeifer¹

¹ Department of Sport Science and Sport, Division Exercise and Health, Friedrich-Alexander University Erlangen-Nürnberg, Erlangen, Germany.

² Institute for Biometrics and Epidemiology, German Diabetes Center, Leibniz Center for Diabetes Research, Heinrich Heine University, Düsseldorf, Germany.

Keywords: Physical activity, Health promotion, Public health, Non-communicable disease, Longevity

Word count main file: 4491

31 **ABSTRACT**

32 **Objective**

33 To investigate the relationship between post-diagnosis physical activity and mortality in
34 patients with selected noncommunicable diseases, including breast cancer, lung cancer, type 2
35 diabetes (T2D), ischemic heart disease (IHD), chronic obstructive pulmonary disease
36 (COPD), stroke, osteoarthritis, low back pain and major depressive disorders.

37 **Design**

38 Systematic review and dose–response meta-analysis.

39 **Data sources**

40 PubMed, Scopus and the Web of Science were searched systematically for English
41 publications from the inception of the platforms until August 2018. Additionally, the search
42 was updated in August 2019.

43 **Eligibility criteria**

44 Prospective observational studies examining the relationship between at least three physical
45 activity categories and all-cause mortality or disease-specific mortality as the primary
46 outcome.

47 **Results**

48 In total, 28 studies were included: 12 for breast cancer, 6 for T2D, 8 for IHD and 2 for COPD.
49 The linear meta-analysis revealed that each 10 metabolic equivalent tasks (MET) h increase of
50 physical activity per week was associated with a 22% lower mortality rate in breast cancer
51 patients (Hazard Ratio [HR], 0.78; 95% CI: 0.71, 0.86), 12% in IHD patients (HR, 0.88; 95%
52 CI: 0.83, 0.93), 30% in COPD patients (HR, 0.70; 95% CI: 0.45, 1.09) and 4% in T2D
53 patients (HR, 0.96; 95% CI: 0.93, 0.99). The non-linear meta-analysis showed a regressive
54 association with no threshold for the beneficial effect of physical activity on mortality.

55 **Conclusion**

56 Higher levels of post-diagnosis physical activity are associated with lower mortality rates in
57 breast cancer, T2D, IHD and COPD patients, with evidence of a no-threshold and non-linear
58 dose–response pattern.

59 **SUMMARY BOX**

60 **Existing findings**

- 61 - Higher levels of physical activity are associated with a clear reduction in all-cause
- 62 mortality in the general population.
- 63 - In the general population, the shape of the dose–response curve between levels of
- 64 physical activity and reduced mortality rates is characterized by a regressive, non-
- 65 linear effect.

66 **New findings**

- 67 - Higher levels of post-diagnosis physical activity are associated with a clear reduction
- 68 in all-cause mortality in adults with breast cancer, T2D, IHD and COPD.
- 69 - The shape of the indication-specific dose–response curves between post-diagnosis
- 70 physical activity and mortality are characterized by a regressive, non-linear association
- 71 with (1) no threshold for the beneficial effect, (2) pronounced reductions of mortality
- 72 for lower levels of physical activity compared to those who are physically inactive and
- 73 (3) no harmful effects at higher levels of physical activity.

INTRODUCTION

Physical activity has been proposed as a form of treatment for people with noncommunicable diseases (NCDs).[1] There is evidence for the central role that physical activity plays in the health status of people with NCDs. Regular physical activity positively influences symptoms and comorbidities, physical fitness and health-related quality of life in more than 25 NCDs, including osteoarthritis, type 2 diabetes mellitus (T2D), stroke and clinical depression.[1] However, it is less clear whether higher levels of physical activity in adults with NCDs also reduce mortality rates and thus lead to longer life expectancies.

The current evidence for the general population regarding physical activity and mortality is comprehensive and unambiguous. Numerous large cohort studies have consistently demonstrated an inverse relationship between physical activity levels and mortality.[2] Meta-analyses with pooled data from these studies produce similar findings.[3, 4] Compared with the lower physical activity groups, the risk of premature death was remarkably reduced in the higher physical activity groups. The meta-analysis conducted by Samitz et al.[4] included 80 primary studies with a total of 1,338,143 participants and revealed that per one hour increment of moderate-intensity physical activity per week, the relative risk of mortality was reduced by 4%. In the updated physical activity guidelines for healthy adults from the U.S. Department of Health and Human Services,[5] a clear dose–response association between the volume of physical activity and mortality rates has been shown. The shape of the dose–response curve is characterized by a regressive, non-linear effect, where the greatest difference in mortality rates occurs among inactive and minimally active individuals. For higher physical activity levels, the dose–response curve flattens out. This means that the relative risk of mortality continues to decline with higher volumes of physical activity with no adverse effects on mortality, even at very high levels of physical activity.[5]

In adults with NCDs, the current evidence on dose–response relations between physical activity and mortality is considerably weaker and inconsistent. For T2D, the meta-analysis conducted by Kodama et al.[6] found that an increment of one MET (metabolic equivalent tasks) h/day of physical activity was associated with a 9.5% relative risk reduction in all-cause mortality, thereby suggesting that post-diagnosis physical activity levels may result in similar mortality risk reductions compared to the general population. In a meta-analysis for patients with cancer, comparably beneficial associations between physical activity and mortality rates were reported by Li et al.[7]. Moore et al.[8] pooled data from six cohort studies of 654,827 individuals and adjusted their analysis for several confounders, including preexisting NCDs. In contrast, they concluded that the longevity effects of physical activity

vary according to the preexisting NCDs, with higher benefits of regular physical activity in terms of life expectancy for those with a history of cancer (7.0 y) and heart disease (6.2 y) compared to those without these diseases (3.7 y).[8] Current evidence from the US Physical Activity Guidelines Advisory Committee[9] reported a general relationship between higher post-diagnosis physical activity and lower mortality rates in five NCDs (breast or colorectal or prostate cancer, the cardiovascular condition of hypertension and T2D). However, the committee found few studies that have systematically quantified the dose–response relations between physical activity levels and mortality end-points in people with preexisting NCDs. Accordingly, their report concludes that dose–response relationships cannot yet be defined for adults with NCDs as a result of the limited information available.[9] Overall, it is unclear whether mortality rates in individuals with NCDs are affected by physical activity in the same way as mortality rates in the general population. Thus, the objective of this study was to conduct a systematic review and dose–response meta-analysis of physical activity and mortality in people with selected NCDs. We aimed to define the dose–response relationship between post-diagnosis physical activity and mortality rates for nine NCDs with a high global burden of disease,[10] including low back pain, T2D, osteoarthritis, depressive disorder, chronic obstructive pulmonary disease (COPD), breast cancer, lung cancer, stroke and ischemic heart disease (IHD).

METHODS

The method for this systematic review and meta-analysis was predefined in a published study protocol,[11] and registered at PROSPERO – the International Prospective Register of Systematic Reviews (registration number: CRD42018103357; available online at https://www.crd.york.ac.uk/prospero/display_record.php?RecordID=103357). This systematic review and meta-analysis is reported in compliance with the Preferred Reporting Items for Systematic Reviews and Meta-Analyses (PRISMA) Statement for Reporting Systematic Reviews and Meta-Analysis (see Supplementary File 1).[12]

Search and data sources

A systematic search was conducted of PubMed, Scopus and the Web of Science from their inception to August 2018. This search was followed by a hand-search of the citations in the detected articles. The search was updated in August 2019 by using the forward citation search in Google Scholar for the articles that qualified for inclusion (see Supplementary File 2).

Study selection

The eligibility criteria required the population to consist of adults with a physician-confirmed or self-reported diagnosis of one of the nine NCDs (osteoarthritis, low back pain, depressive disorder, IHD, T2D, stroke, COPD, lung cancer or breast cancer). Studies that investigated the association between physical activity and all-cause mortality as the primary outcome or any other indication-specific mortality as a primary or secondary outcome were included. For the dose–response meta-analysis, at least three categories of the exposure (i.e. physical activity) had to be reported in the original study. The eligible study design was that of a prospective observational nature. Non-English-language records, studies conducted on non-human subjects and duplicate data sets were not considered. No limit on publication year was imposed.

First, the literature identified through the electronic search was primarily assessed for eligibility by inspecting the titles and abstracts. We decided to divide the literature between three reviewers because of the large number of hits. Two additional reviewers were appointed to ensure the quality of the first screening process. In the second step, the full texts of the qualified studies were retrieved and critically evaluated for their final inclusion in the data collection process. The three reviewers independently assessed the articles for eligibility, and any discrepancies were resolved by discussions and when necessary, by adjudication from another reviewer.

Data collection and items

The following details were extracted from the included publications: first author, year of publication, study name, design, country, mean follow-up time, total sample size, age, sex, mortality cases in total and per physical activity category, exposure categories, diagnosis and mortality ascertainment, relative risks and corresponding 95% CIs of the multivariate-adjusted models. Thirteen authors of the selected studies were contacted for additional data on physical activity. However the original data from two authors did not allow for an estimation of physical activity levels in MET-h/week (meaning that these studies were excluded), and two authors provided information on physical activity dosage.[13, 14]

Risk of bias in individual studies

The Cochrane tool for assessing the “Risk Of Bias In Non-randomised Studies - of Interventions” (ROBINS-I) was used to estimate the risk of bias and endorse conclusions closer to the truth.[15] The tool includes seven domains that lead to the risk of bias. These

domains are due to 1) confounding, 2) selection of participants, 3) exposure assessment, 4) misclassification during follow-up, 5) missing data, 6) measurement of the outcome, and 7) selective reporting of results. The included studies were independently evaluated by two assessors (EM, LM). Any inconsistencies in the evaluations were documented and then discussed with a third member of the research team (WG) and resolved by mutual agreement.

Statistical analysis

The meta-analysis was performed using Stata statistical software (Version 15, StataCorp, College Station, TX, US). We pooled aggregated data using the random effects meta-regression model, as suggested by DerSimonian and Laird,[16] assuming random variance of the true effect of physical activity among studies, especially due to diversity in assessment methods. For studies that reported results from one cohort in stratified estimates (e.g. separately for men and women), a fixed effect model was used to combine the effects for the whole cohort and include it in the meta-analysis. We conducted the linear dose-response association between physical activity per 10 MET-h/week and all-cause mortality via the method used by Greenland and Longnecker and presented via forest plots.[17, 18] For this analysis, the number of cases and person-years, the quantification of the exposure and RRs with the corresponding 95% CIs of at least three categories were needed. If information was missing, the distributions of cases and person-years were estimated using the total number of cases and the total number of participants plus the follow-up period, as previously described.[19] If the lowest category was not used as a reference, the reported risk estimates were recalculated using Orsini et al.'s[20] method to ensure comparability. The data on the volume of physical activity were converted into a unit of MET-h/week. If a study reported the exposure categories as ranges, then for each category, the midpoint between the lower and upper limit was calculated. For open categories, we assumed that the width was the same as the adjacent category. A potential non-linear association was evaluated using a restricted cubic spline model with three knots at the 10th, 50th and 90th percentile of frequency of the exposure.[18] The indication of nonlinearity was tested using a likelihood ratio test. The heterogeneity was described using the measure of inconsistency (I^2), and τ^2 was used to measure the variance between the included studies.[21] A subgroup analysis and meta-regression were performed to explore the heterogeneity across studies. The analyses were stratified by demographic variables (age, geographic area), follow-up duration (< 10 and ≥ 10 years), death cases (<100, 100–500 and ≥ 500), method of physical activity assessment (questionnaire and interview), risk of bias (moderate and serious) and additional disease-

specific relevant factors (e.g. menopausal status in breast cancer). Publication bias was investigated through various visual and statistical tools, including funnel plots and Egger's test for small-study effects, where asymmetry with a significance level of $p < 0.1$ suggests publication bias.[22, 23]

RESULTS

The systematic database search yielded 44,518 publications in total. Three additional studies were identified from the reference lists. Full texts were retrieved and screened for 183 articles with the potential for inclusion. Twenty-eight studies satisfied the inclusion criteria for only four out of the nine NCDs; breast cancer ($n = 12$), T2D ($n = 6$), IHD ($n = 8$) and COPD ($n = 2$) (see Figure 1 for a detailed flow diagram).

Study characteristics

The 28 included studies were all published during the past two decades and based in numerous countries throughout the world. All the included studies had a prospective observational design. More specifically, there were 25 cohort studies that included two prospective cohort follow-ups to case-control studies as well as three follow-up studies of RCTs.[13, 24, 25] The sample sizes varied considerably from 435[26] to 15,645[27], with a total of 27,248 participants diagnosed with breast cancer, 32,221 with T2D, 4,784 with COPD and 42,027 with IHD.

<< Figure 1 >>

The follow-up duration ranged from 3.3[28] years to 18.4 years.[29] A summary of the main characteristics of the cohorts is displayed in Table 1. All-cause mortality was reported as the primary outcome in all included studies. Other reported outcomes were breast cancer mortality, recurrence and new primary events, cardiovascular disease mortality, IHD mortality and respiratory mortality. All exposure assessments of physical activity were based on self- or interviewer-administered questionnaires. The time from diagnosis to physical activity measurement varied from three to six months post-diagnosis[30]. The longest follow-up was 14 years.[31] Detailed information on the measurement instruments for physical activity assessment can be found in Supplementary File 3. Exposure categories were presented as the volume of physical activity in MET-h/week[14, 24–28, 32–44] calorie expenditure,[45] duration of physical activity,[46] frequency of physical activity[47] and nominal categories.[13, 29–31, 48, 49]

Table 1. Main characteristics of the included studies.

Publication, study name, study design, country	Sample size/ No of cases	Follow-up	Diagnosis and mortality ascertainment	Physical activity measurement	Confounders	Risk of bias assessment
Breast cancer						
Ammitzbøll 2016 [41], DCHS, Denmark, prospective cohort study, USA	n = 959 144 cases	Median (IQR), y = 10 (7)	Cancer registry; Central Population Register.	Questionnaire	BMI, baseline alcohol, smoking status, education, comorbidity, nodal status, operation type, chemotherapy, recreational and household PA.	Serious
Bao 2015 [34], SBCSS, prospective cohort study, China	n = 518 128 cases	Median (range), y = 9.1 (0.6 - 11.8)	Shanghai Cancer Registry; Shanghai Vital Statistics Registry.	Questionnaire	Age at diagnosis, BMI at baseline, education, marital status, menopausal status, Charlson comorbidity index, chemotherapy, radiotherapy, tumor-node metastasis stage, soy protein intake, tea consumption at baseline.	Moderate
Bertram 2011 [24], WHEL, follow-up study of RCT, USA	n = 2361 195 cases	Median (range), y = 7.1 (1.0-10.8)	Medical records and death certificates, telephone interviews, confirmation obtained for > 95% of participants.	Questionnaire	Age and BMI at randomization, race, fruit and vegetable consumption, menopausal status, tumor type, tumor grade, tumor stage, anti-estrogen use, clinical site, time from diagnosis to randomization, hot flashes, and study group.	Moderate
Bradshaw 2014 [32], LIBCSP, prospective cohort follow-up of case-control study, USA	n = 1423 420 cases	Median (range), y = 12.7 (0.23-13.42)	Physician confirmed diagnosis; National Death Index.	Interviewer-administered questionnaire	Age, pre-diagnosis BMI, chemotherapy treatment, tumor size, missing PA data.	Serious
Chen 2011 [35], SCR, prospective cohort study, China	n = 4826 436 cases	Median, y = 4.3	Population-based Shanghai Cancer Registry; Annual linkage with the Shanghai Vital Statistics database.	Interview	Date of birth, BMI at baseline, waist-to-hip ratio at baseline, menopausal status, income, education, quality of life, cruciferous vegetable intake, soy protein intake, tea consumption, chemotherapy, radiotherapy, tamoxifen use, tumor-node metastasis status, estrogen progesterone receptor status.	Moderate

de Glas 2014 [26], TEAM-L, prospective cohort study, Netherlands	n = 435 58 cases	Followed until 2012 (from 2004-5)	Histologically/cytologically confirmed diagnosis.	Questionnaire	Age at 1 year after diagnosis, number of comorbidities, tumor stage, node stage, BMI, and chemotherapy.	Moderate
Holick 2008 [40], CWLS, prospective cohort follow-up of case-control study, USA	n = 4482 412 cases	Mean, y = 5.5 ±1,1	Self-reported and state cancer registries; National Death Index.	Questionnaire	Age at diagnosis, stage of disease at diagnosis, state of residence, interval between diagnosis and PA assessment, BMI, post-diagnosis menopausal status, post-diagnosis hormone therapy use, total energy intake year before enrollment in the CWLS, education level at diagnosis, family history of breast cancer at diagnosis, and initial treatment modality (radiation, chemotherapy, tamoxifen).	Serious
Holmes 2005 [36], NHS, prospective cohort study, USA	n = 2987 463 cases	Median, y = 8	Self-reported and confirmed from medical records and pathology reports, family, postal authorities; National Death Index.	Questionnaire	Age, interval between diagnosis and PA assessment, smoking status, BMI, menopausal status and hormone therapy use, age at first birth and parity, oral contraceptive use, energy intake, energy-adjusted protein intake, disease stage, radiation treatment, chemotherapy, and tamoxifen treatment.	Serious
Irwin 2008 [37], HEAL, prospective cohort study, USA	n post-diagnosis = 688 53 cases	Median (range), y = 6 (5-8)	Surveillance, Epidemiology, and End Results registries.	Questionnaire	Age, race, disease stage, initial treatment, tamoxifen use, BMI, and fruit/vegetable servings per day.	Serious
Irwin 2011 [28], WHI, prospective cohort study, USA	n = 2910 186 cases	Mean (SD), y = 3.3 (1.8)	Physician-confirmed diagnosis, clinical center follow-up of participants and surrogates; National Death Index.	Questionnaire	Age, stage, estrogen receptor, progesterone receptor, grade, human epidermal growth factor receptor 2, ethnicity, study arm, previous therapy use, time from diagnosis to PA assessment, BMI, diabetes, alcohol consumption, smoking, total calories, percentage calories from fat, servings of fruit and vegetables.	Moderate
Maliniak 2018 [33], CPS-II NC,	n = 3689 185	Median (IQR) =	Self-reported diagnosis of breast cancer; National Death Index.	Questionnaire	Age at diagnosis, race, calendar year of diagnosis, post-diagnosis BMI, Surveillance,	Serious

prospective cohort study, USA	cases	7.5 (5.8)	Both verified through medical records or state cancer registries.		Epidemiology, and End Results summary stage at diagnosis, post-diagnosis number of co-morbidities, post-diagnosis use of hormone replacement therapy, post-diagnosis alcohol intake, and post-diagnosis other cancer diagnosis, smoking status.	
Sternfeld 2009 [42], LACE, prospective cohort study, USA	n = 1970 187 cases	Mean (SD), mo = 87 (18)	Kaiser Permanente Northern California Cancer Registry, Utah Cancer Registry; death certificates.	Questionnaire	Age, BMI, number of positive nodes, stage, weight at 18 years, type of treatment, type of surgery, education level, smoking status.	Serious
Type 2 diabetes						
Glenn 2015 [27], SCCS, prospective cohort study, USA	n = 15,645/ m-f 2370 cases	Median (range), y = 6.2 (0.01-9.8)	Self-reported diagnosis; Social Security Administration vital status service for epidemiologic researchers and the National Death Index.	Questionnaire	Age, sex, race, BMI, income, education, comorbidities (hypertension, high cholesterol, myocardial infarction, stroke), smoking, insulin use, time since diagnosis, sedentary time.	Serious
Gregg 2003 [46], NHIS, prospective cohort study, USA	n = 2896/ m-f 671 cases	y = 8	Self-reported diagnosis; National Death Index.	Interview	Age, BMI, sex, race, self-rated health, smoking, weight loss approaches, hospitalizations, hypertension, use of antihypertensive medications, physician visits, limitations caused by cancer and CVD, functional limitations.	Serious
Hu 2004 [29], six independent population surveys, prospective cohort study, Finland	n = 3316/ m-f 1410 cases	Mean, y = 18.5	Self-reported, hospital discharge diagnosis, or drug-treated cases in the Drug Registry; Statistics Finland.	Questionnaire	Age, sex and study year, BMI, systolic blood pressure, cholesterol, smoking, occupational PA, commuting PA; individuals with comorbidities, severe disease or disability at baseline, and who died the first two years of follow-up were excluded.	Serious
Sluik 2012 [43], EPIC, prospective cohort study, 10 European Countries	n = 5859/ m-f 755 cases	Median, y = 9.4	Self-reported diabetes confirmed from a physician, or use of medication, or self-reported confirmation during follow-up, or diabetes registries, or HbA1c	Questionnaire	Age, sex, study center, diabetes medication, disease duration, myocardial infarction, stroke, cancer, alcohol consumption, smoking behavior, education, energy intake, scores for dietary patterns.	Serious

			level > 6% at baseline; Linkages with local, regional, or central cancer registries, boards of health, or death indices.			
Sone 2013 [44], JDCS, prospective cohort study, Japan	n = 1702/ m- f 69 cases	Median, y = 8,05	HbA1c levels \geq 6.5% (51 mmol/mol) referring to the Japan Diabetes Society; annual reports form.	Questionnaire	Age, sex, BMI, diabetes duration, smoking, energy/ethanol intake, dietary fiber, saturated fatty acid, type of occupation, HbA1c, systolic blood pressure, LDL-cholesterol, HDL-cholesterol, triacylglycerol, treatment (insulin, oral hypoglycaemic agents, antihypertensive agents or lipid-lowering agents).	Serious
Tanasescu 2003 [38], HPFS, prospective cohort study, USA	n = 2803/ m 355 cases	y = 14	Self-reported physician's diagnosis confirmed from diagnostic criteria from the National Diabetes Data Group; next of kin, work associates, postal authorities, and National Death Index.	Questionnaire	BMI, alcohol intake, smoking status, family history of myocardial infarction, use of vitamin E supplements, diabetes duration, diabetes medication, dietary intake of trans fat, saturated fat, fiber, and folate, history of angina and coronary artery bypass graft (CABG), hypertension at baseline, high serum cholesterol at baseline.	Moderate
Chronic Obstructive Pulmonary Disease						
Cheng 2018 [14], HSE and SES, prospective cohort study, England and Scotland	n = 2398/ m- f 571 cases	Mean (SD), y = 8.5 (3.9)	Confirmed by spirometry according to GOLD criteria; National Health Service mortality data.	Questionnaire	Age, gender, BMI, COPD severity, history of CVD, cancer and diabetes, self-reported longstanding illness, smoking status, alcohol consumption, education.	Serious
Garcia-Aymerich 2006 [49], CCHS, prospective cohort study, Denmark	n = 2386/ m- f 1425 cases	Mean (SD) = 12 (5.9)	Confirmed by a fixed FEV1/FVC ratio test; Danish National Board of Health.	Questionnaire	Age, gender, BMI, income, smoking status, glucose, systolic blood pressure FEV ₁ , IHD, myocardial infarction, stroke, asthma, sputum, asthma and smoking interaction.	Serious

Ischemic heart diseases						
Gerber 2011 [30], ISFAMI, prospective cohort study, Israel	n = 1521/ m-f 427 cases	Median (IQR), y = 13.2 (12.0 - 13.5)	Index hospitalization; Israeli Population Registry, death certificates, hospital charts, family physicians and members.	Questionnaire	Age, gender, hypertension, diabetes, dyslipidemia, smoking, obesity, chronic IHD, comorbidity index, Killip class, self-rated health, thrombolytic therapy, CABG, PTCA within 45 days, education, income, pre-MI employment, living with a steady partner, recurrent MI (and unstable angina pectoris, heart failure, CABG and PTCA) and cardiac rehabilitation during follow-up.	Moderate
Janssen 2006 [45], CHS, prospective cohort study, USA	n = 1045/ m-f 489 cases	y = 9	Self-reported IHD confirmed from medications, medical records, clinical examinations; reviews of obituaries, medical records, death certificates, and the U.S. Health Care Financing Administration health care utilization database.	Interview	Age, sex, race, smoking, alcohol, socioeconomic status, adiposity, prevalent disease (diabetes, lung disease, cancer, hypertension, stroke, congestive heart failure), and type of IHD (angina, MI, coronary revascularization).	Moderate
Lahtinen 2017 [13], ARTEMIS, follow-up study of RCT, Finland	n = 1746/ m-f 147 cases	Median (IQR), mo = 54 (41-69)	Angiographically confirmed IHD with coronary stenosis > 50% of ≥ 1 coronary arteries; national death registries, mailing, telephone calls to family, electronic patient records.	Questionnaire	Age, gender, BMI at baseline, diabetes mellitus, history of MI, left ventricular ejection fraction, Canadian Cardiovascular Society grading for angina pectoris, cardiovascular event at 2-years follow-up, smoking status and alcohol consumption at 2 years.	Moderate
Moholdt 2017 [48], HUNT, prospective cohort study, Norway	n = 6493/ m-f 3818 cases	Median (IQR), y = 12.5 (14.1)	Self-reported IHD; National Cause of Death Registry in Norway.	Questionnaire	Age, examination year, smoking status, diabetes mellitus, alcohol consumption, hypertension, health status, PA for BMI, BMI for physical activity (stratified by sex).	Moderate
Mons 2014 [47], KAROLA, prospective cohort study,	n = 1038/ m-f	Mean (SD), y = 8.1 (3.1)	Physician-confirmed diagnosis; death certificates.	Questionnaire	Age, gender, BMI, education, study site, employment status, cotinine-validated smoking status, self-reported poor health, history of MI, diabetes mellitus, hypertension, left ventricular	Serious

Germany					function, number of affected vessels.	
Stewart 2017 [25], STABILITY, follow-up study of RCT, Global (39 countries)	n = 15,467/ m-f 1081 cases	Median (IQR), y = 3.79 (0.31)	IHD confirmed from coronary angiography.	Questionnaire	Age, gender, BMI, randomized treatment, systolic blood pressure, hypertension, geographic region for final reporting, prior myocardial infarction (MI), prior coronary revascularization percutaneous coronary intervention or coronary artery bypass graft, IHD, diabetes mellitus, smoking status, polyvascular disease, significant renal dysfunction, hemoglobin, white blood cell count, low-density lipoprotein cholesterol, high-density lipoprotein cholesterol, triglycerides, estimated glomerular filtration rate according to the Chronic Kidney Disease-Epidemiology research group calculator, congestive heart failure.	Serious
Tian 2017 [39], CKB, prospective cohort study, China	n (IHD) = 13,936 / m-f 1442 cases	y = 7	Physician-diagnosed hypertension or CVD (stroke, transient ischemic attack, ischemic heart disease); China CDC's Disease Surveillance Points system, local residential and health insurance records, active confirmation from street committee or village administrators.	Interviewer-administered questionnaire	Smoking status, alcohol consumption, fruit consumption, dairy products, meat and preserved vegetables, education, income, survey season, diabetes status, family history of CVD, CVD medication, poor health status (Analysis stratified by age-at-risk, gender, region, baseline CVD status)	Serious
Wannamethee 2000 [31], BRHS, prospective cohort study, Great Britain	n = 772/ m 131 cases	Mean, y = 5	Self-reported physician-diagnosed IHD; National Health Service registers in Southport and Edinburgh.	Interviewer-administered questionnaire	Age, smoking, social class, self-rated health status, diabetes mellitus, history of MI and stroke.	Moderate

243

244 DCHS, Diet, Cancer, and Health study; IQR, Interquartile range; BMI, body mass index; PA, physical activity; CVD, cardiovascular diseases; IHD, ischemic heart diseases;
245 COPD, chronic obstructive pulmonary disease; SBCSS, Shanghai Breast Cancer Survival Study; WHEL, Women's Healthy Eating and Living study; LIBCSP, Long Island
246 Breast Cancer Study; LIBCSP, Long Island Breast Cancer Study Project; SCR, Shanghai Cancer Registry; TEAM-L, Tamoxifen Exemestane Adjuvant Multicenter Lifestyle;
247 CWLS, Collaborative Women's Longevity Study; NHS, Nurses' Health Study; HEAL, Health, Eating, Activity, and Lifestyle study; WHI, Women's Health Initiative study;

248 CPS-II NC, Cancer Prevention Study-II Nutrition Cohort; LACE, Life After Cancer Epidemiology study; SCCS, Southern Community Cohort Study; NHIS, National Health
 249 Interview Survey; EPIC, European Prospective Investigation Into Cancer and Nutrition; JDCS, Japan Diabetes Complications Study; HPFS, Health Professionals' Follow-up
 250 Study; HSE, Health Survey for England; SES, Scottish Health Survey; CCHS, Copenhagen City Heart Study; ISFAMI, Israel Study of First Acute Myocardial Infarction; CABG,
 251 coronary artery bypass graft, PTCA, percutaneous transluminal coronary angioplasty; CHS, Cardiovascular Health Study; ARTEMIS, Innovation to Reduce Cardiovascular
 252 Complications of Diabetes at the Intersection; HUNT, Nord-Trøndelag Health study; CKB, China Kadoorie Biobank study; BRHS; British Regional Heart Study

253

254

255

256

257

258

259

260

261

Risk of bias in included studies

In terms of the seven domains of ROBINS-I, no study had a low risk of bias. From the 28 publications assessed, 11 were evaluated to have a moderate risk of bias,[13, 24, 26, 28, 30, 31, 34, 35, 38, 45, 48] and the remaining studies had a serious risk of bias. The main domains that introduced bias were the confounding domain and the domain of deviations from intended interventions. It is important to note that due to the assessment of physical activity based on self-reports, a potential misclassification of physical activity could not be excluded. Therefore, 82% of the studies were rated with an unknown risk of bias in the domain of the classification of physical activity. The risk of bias for each domain in the 28 studies is shown in Figure 2. In addition, Table 1 contains the final risk of bias evaluation across the studies, and Supplementary File 4 includes the detailed results of the risk of bias assessment.

<< Figure 2 >>

Post-diagnosis physical activity and all-cause mortality

We examined the relationship between post-diagnosis physical activity and all-cause mortality in breast cancer, T2D, IHD and COPD populations. The results of the linear dose-response meta-analyses are presented in Figure 3. Physical activity was associated with lower mortality rates in persons with breast cancer, T2D, COPD and IHD. For every 10 MET-h increase of physical activity per week, the summary hazard ratio (SHR) decreased by 22% in people with breast cancer (HR, 0.78; 95% CI: 0.71, 0.86), by 12 % in people with IHD (HR, 0.88; 95% CI: 0.83, 0.93) and by 30% in people with COPD (HR, 0.70; 95% CI: 0.45, 1.09). The mortality rates in people with T2D reduced by 4% for every 10 MET-h/week (HR, 0.96; 95% CI: 0.93, 0.99). Ten MET-hours/week is equivalent to 180 minutes of walking or 86 minutes of running.[50]

There was evidence of high heterogeneity between the included studies for all the target groups, specifically breast cancer ($I^2 = 90.1\%$), T2D ($I^2 = 72.7\%$), IHD ($I^2 = 86.5\%$) and COPD ($I^2 = 94.0\%$). The subgroup analysis for breast cancer (Supplementary File 6, Table S6.1) highlighted that the subgroup difference is statistically significant ($p = 0.018$) for the follow-up variable only, meaning that the length of follow up can modify the observed associations between physical activity and mortality. None of the other included variables (age, geographic area, death cases, method of physical activity assessment, risk of bias, menopausal status in breast cancer) explained the amount of between-study variance ($p > 0.05$).

The funnel plot for breast cancer as well as T2D did not suggest the presence of publication bias, and Egger's test confirmed that there was no apparent evidence of bias. However, the funnel plot for IHD studies was asymmetrical, and the test for small-study effects evidenced that publication bias could be present ($p < 0.001$) (Supplementary File 5). This should be interpreted with caution, however, as only eight studies were included in the funnel plot, and the statistical tests for publication bias are criticised for having low power.[51, 52] Furthermore, it should be noted that studies with smaller sample sizes[13, 30, 31, 47] have reported higher beneficial effects of physical activity. Thus, the detected asymmetry could be related to high heterogeneity.

<< Figure 3 >>

Figure 4 presents the non-linear dose-response meta-analysis among the four NCD populations. The results for breast cancer ($n = 12$), T2D ($n = 6$), IHD ($n = 8$) as well as COPD ($n = 2$) indicated a non-linear dose-response relationship between post-diagnosis physical activity presented in MET-h/week and all-cause mortality ($p_{\text{for non-linearity}} < 0.001$). The curves for breast cancer, T2D and IHD show the steepest drop between 0 MET-h/week and 20 MET-h/week; the COPD curve drops more markedly between 0 and 10 MET-h/week. After this, the curves flatten out. For diabetes and COPD, significantly higher physical activity levels (up to around 90 MET-h/week) are also associated with further positive effects on mortality rates. For breast cancer, there appears a plateau with no additional effects on mortality with more than 45 MET-h/week. For COPD, the curve can only be calculated up to 30 MET-h/week.

<< Figure 4 >>

DISCUSSION

In this systematic review and meta-analysis, higher levels of post-diagnosis physical activity were associated with a reduction in all-cause mortality in adults with breast cancer, T2D, IHD and COPD. Our dose-response meta-analysis highlights a non-linear association between physical activity levels and mortality characterized by (1) no threshold for the beneficial effect of physical activity on mortality (i.e. even low levels of physical activity are beneficial for mortality rates compared to being physically inactive), (2) a non-linear curve, where the greatest difference in mortality rates occurs among inactive compared to minimally active

individuals and (3) for higher physical activity levels, the dose–response curves flatten out. The subgroup meta-analysis showed that longer follow-ups (≥ 10 years) lead to higher reductions of SHR. Although the effect size is higher for follow-ups that are 10 years or longer, there is an unexplained heterogeneity between the effects of physical activity within each subgroup. However, the unbalanced distribution of studies and the low overall number of studies for some subgroups make the interpretation difficult. Hence, it is uncertain whether the length of follow-up can explain the heterogeneity in the effect size. The reduction in mortality rates from physical activity were consistent and much the same after controlling for geographic areas (Asia, Europe, US, other), age (<60 years; ≥ 60 years), number of cases (<100 , 100–500) and the risk of bias (moderate; serious). Due to a lack of studies, we were not able to determine dose–response relationships for physical activity and mortality in adults with low back pain, osteoarthritis, depressive disorder, lung cancer or stroke.

Comparison with other studies

Our findings confirm previous linear meta-analyses, which showed a general correlation between higher physical activity levels and lower mortality rates in adults with T2D[6] and breast cancer.[7] Our linear meta-analysis reveals reductions of SHR per 10 MET-h/week that vary between the four NCDs. The lowest SHR reduction in our results was found in T2D (4%) – a somewhat lower effect than the 9.5% reduction per one MET-h/day reported by Kodama et al.[6] We found medium reductions in IHD (12%) and breast cancer (22%) and the highest SHR reductions in COPD (30%). Our applied non-linear dose–response-analysis extends and refines these previous linear analyses. The associations between different post-diagnosis physical activity levels and mortality for adults with NCDs are very similar to those recently developed for the general population.[9, 53, 54] Therefore, our results confirm the following main characteristics of the dose–response curves in the general population for adults with selected NCDs: (1) no threshold for the positive effect, (2) the most pronounced SHR reductions occurs between adults with little physical activity compared to those being physically inactive and (3) no negative effects on mortality at higher volumes of physical activity.

For higher volumes of physical activity equivalent to an energy expenditure of more than five times the weekly recommended moderate-intensity physical activity of 150 minutes and more, the dose–response curve is less clearly defined. The dose–response curves of the US Physical Activity Guidelines Advisory Committee[9] does not include physical activity levels of more than 30 MET-hours/week. Ekelund et al.[54] include higher volumes of physical activity,

stating that the maximal reductions in SHR were seen at about 24 min/day of moderate to vigorous physical activity or 375 min/day of light intensity; higher volumes of physical activity are associated with a slight reduction in their benefit on mortality rates. In our study, higher physical activity levels were associated with continuously small declines in mortality rates for IHD and T2D. For breast cancer, there is a point of maximum reduction of SHR at 55 MET h/week with no additional benefits for higher physical activity levels. No data is available on higher physical activity levels for COPD.

In the total population, 70% of the maximum effect on mortality risk reduction is achieved at an energy consumption of 8.25 MET-h/week (equivalent to meeting the physical activity recommendations of 150 weekly minutes).[9] Our results indicate that in adults with NCDs, this energy consumption is associated with about 40% of the maximum achievable reduction in mortality rates. Physical activity and both overall and cardiovascular mortality after stroke were connected through a dose–response relationship where 10 MET-h/day of physical activity produced 35–46% reductions in SHR.[39] Although one study reported data on stroke patients,[39] it was not sufficient to be included in the meta-analysis. For 4 NCDs (low back pain, osteoarthritis, depressive disorder, lung cancer), we were not able to find appropriate studies for our analysis. Thus, our findings confirm the research gap in the clinical populations already identified before.[9]

Strengths and limitations

Our study has several strengths. Its main strength is the broad and comprehensive systematic literature search for 9 NCDs that has a high relevance for public health. For the first time, our work generates a broad overview of post-diagnosis physical activity and mortality for adults with NCDs. Another strength is the applied non-linear dose–response meta-analysis that enables precise statements regarding the effective dose of physical activity for reduced mortality rates. This information helps with the adaption or development of exercise recommendations for adults with NCDs. In addition, the use of the new Robins-I tool is a methodological strength that allows for a precise estimation of the risk of bias in different domains (e.g. bias in the measurement outcome, due to missing outcome data or due to deviation from intended interventions).

Despite its strengths, this systematic review and meta-analysis has limitations that should be acknowledged. First, at the outcome level of the study, the risk of bias in the measurement of physical activity in the original studies is unknown. All studies measured physical activity levels using self-reports. Compared to device-based measurements, self-reported measures are

prone to over-reporting of one's physical activity levels.[55] Most of the studies have measured the level of physical activity only at one point in time, thus meaning that no information on changes over time is available. Moreover, different cut-off points were used by the single studies to classify the participants' levels of physical activity. This might lower the accuracy of the dose-response curves. If the over-reporting of physical activity already plays a role at low physical activity levels, the actual high relative reduction in mortality rates of somewhat physically active persons compared to inactive persons could be underestimated. Second, at the study level, our findings are susceptible to bias derived from studies of an observational nature. Prospective observational cohort studies fail to provide conclusive evidence of a causal relationship between physical activity and mortality.[56, 57] Our results might be affected by reverse causality, as patients may tend to adjust their physical activity level according to the disease severity and prognosis. Consequently, our analysis of cohort studies does not provide a conclusive answer as to whether the reported dose-response relationships between physical activity and mortality are actually causal or only correlative. According to Hill,[58] however, our results increase the sense of confidence in a causal relationship because they display (1) a clear dose-response curve, (2) a strong association or high effect size and (3) consistent results in different studies. Third, at the review level and as reported in the study protocol,[11] we did not consider the potential differences between different physical activity intensities (i.e. light vs moderate vs vigorous), between physical activity in different contexts (e.g. leisure time physical activity vs occupational physical activity) or the interaction between physical activity and sedentary behaviour. Furthermore, our analysis is likely to be affected by small-study effects and the small number of original studies available for the sensitivity analysis.

Implications and future research

Assuming causality, our findings have implications for adults with NCDs, physicians and other health professionals involved in physical activity promotion and exercise therapy, as well as healthcare decisionmakers and policymakers. First, our results bear importance for policymakers and those involved in public health issues. The results highlight the importance of a physically active lifestyle and support strategies to promote physical activity (e.g. the World Health Organization's Global Action Plan on Physical Activity).[59] Second, for those creating physical activity guidelines, our findings may inform developments or updates on physical activity recommendations for adults with NCDs. Our findings reinforce low-dose physical activity recommendations that clearly demonstrate there is no minimum dose of

physical activity and that effects on longevity occur at a volume of physical activity significantly below the recommended minimum dose of 150 minutes per week.[60] The “+10 minutes of physical activity per day” from Japan[61] or the “Every Step Counts” message from Germany[62] might be more feasible and efficient physical activity recommendations. Third, for physicians, our results illustrate the medical potential of exercise as medicine and encourage initiatives to anchor assess to and promotion of physical activity in routine medical care.[63] Fourth, for health professionals in the field of physical activity promotion, our results could lead to new targets for health-enhancing physical activity. Adults with NCDs are often rather physically inactive[64] and experience various barriers to physical activity, including time constraints and personal doubts about being able to participate in regular physical activity.[65–67] Completing at least 150 minutes of physical activity per week is considered by many to be overwhelming and unachievable. For adults with NCDs, non-threshold-based, low-dose physical activity recommendations could be effective while also being encouraging and easier to implement. Thus, low-dose physical activity recommendations would destroy many barriers in relation to an active lifestyle and increase the probability of success of interventions that promote physical activity. The results also bear implications for future research. We identified a research gap: For 4 out of 9 NCDs (lung cancer, depressive disorder, lung cancer, low back pain), there were no eligible studies available. Since the associations for post-diagnosis physical activity and mortality in adults with NCDs and the total population are different,[68] future research should either conduct cohort studies on adults with NCDs or make a differentiation in the analysis of the total population between healthy people and those with an existing NCD. Furthermore, based on the considerable analyses of Ekelund et al.[54] in the overall population, future analyses for adults with NCDs should also consider different intensities and types of physical activity as well as the interaction between sedentary behaviour and physical activity. Finally, future studies should apply more reliable device-based assessments of physical activity instead of questionnaires that are prone to over-reporting.

CONCLUSION

In conclusion, our systematic review and meta-analysis provides evidence that higher levels of physical activity are associated with lower mortality rates in adults with T2D, IHD, breast cancer, or COPD. The shape of the dose-response curves are characterized by no threshold for the beneficial effect of physical activity on mortality, and a regressive, non-linear dose-response pattern where the greatest difference in mortality rates occurs among inactive

compared to minimally active individuals. There is no minimum dose of physical activity for life prolongation. Less physical activity than the recommended 150 min a week has life expectancy benefits for adults with a NCD. Our results encourage the development of low-dose physical activity recommendations for adults with NCDs.

References

- 1 Pedersen BK, Saltin B. Exercise as medicine - evidence for prescribing exercise as therapy in 26 different chronic diseases. *Scand J Med Sci Sports* 2015;25 Suppl 3:1–72.
- 2 Warburton DER, Bredin SSD. Health benefits of physical activity: a systematic review of current systematic reviews. *Curr Opin Cardiol* 2017;32(5):541–56.
- 3 Arem H, Moore SC, Patel A, et al. Leisure time physical activity and mortality: a detailed pooled analysis of the dose-response relationship. *JAMA Intern Med* 2015;175(6):959–67.
- 4 Samitz G, Egger M, Zwahlen M. Domains of physical activity and all-cause mortality: systematic review and dose-response meta-analysis of cohort studies. *Int J Epidemiol* 2011;40(5):1382–400.
- 5 U.S. Department of Health and Human Services. Physical activity guidelines for Americans, 2nd edition. Washington, DC: U.S.: Department of Health and Human Services 2018.
- 6 Kodama S, Tanaka S, Heianza Y, et al. Association between physical activity and risk of all-cause mortality and cardiovascular disease in patients with diabetes: a meta-analysis. *Diabetes Care* 2013;36(2):471–79.
- 7 Li T, Wei S, Shi Y, et al. The dose-response effect of physical activity on cancer mortality: findings from 71 prospective cohort studies. *Br J Sports Med* 2016;50(6):339–45.

- 491 8 Moore SC, Patel AV, Matthews CE, et al. Leisure time physical activity of moderate to
492 vigorous intensity and mortality: a large pooled cohort analysis. *PLoS Med*
493 2012;9(11):e1001335.
- 494 9 2018 Physical Activity Advisory Committee. 2018 Physical Activity Guidelines
495 Advisory Committee scientific report. Washington, DC: U.S.: Department of Health and
496 Human Services 2018.
- 497 10 Murray CJL, Vos T, Lozano R, et al. Disability-adjusted life years (DALYs) for 291
498 diseases and injuries in 21 regions, 1990-2010: a systematic analysis for the Global
499 Burden of Disease Study 2010. *Lancet* 2012;380(9859):2197–223.
- 500 11 Geidl W, Schlesinger S, Mino E, et al. Dose–response relationship between physical
501 activity and mortality in people with non-communicable diseases: A study protocol for
502 the systematic review and meta-analysis of cohort studies. *BMJ Open*
503 2019;9(9):e028653.
- 504 12 Liberati A, Altman DG, Tetzlaff J, et al. The PRISMA statement for reporting
505 systematic reviews and meta-analyses of studies that evaluate health care interventions:
506 explanation and elaboration. *PLoS medicine* 2009;6(7):e1000100.
- 507 13 Lahtinen M, Toukola T, Junttila MJ, et al. Effect of changes in physical activity on risk
508 for cardiac death in patients with coronary artery disease. *Am J Cardiol*
509 2018;121(2):143–48.
- 510 14 Cheng SWM, McKeough Z, Alison J, et al. Associations of total and type-specific
511 physical activity with mortality in chronic obstructive pulmonary disease: a population-
512 based cohort study. *BMC Public Health* 2018;18(1):268.
- 513 15 Sterne JAC, Hernán MA, Reeves BC, et al. ROBINS-I: a tool for assessing risk of bias
514 in non-randomised studies of interventions. *BMJ*;355:i4919.

- 515 16 DerSimonian R, Laird N. Meta-analysis in clinical trials revisited. *Contemp Clin Trials*
516 2015;45(Pt A):139–45.
- 517 17 Greenland S, Longnecker MP. Methods for trend estimation from summarized dose-
518 response data, with applications to meta-analysis. *Am J Epidemiol* 1992;135(11):1301–
519 09.
- 520 18 Orsini N, Li R, Wolk A, et al. Meta-analysis for linear and nonlinear dose-response
521 relations: examples, an evaluation of approximations, and software. *Am J Epidemiol*
522 2012;175(1):66–73.
- 523 19 Aune D, Greenwood DC, Chan DSM, et al. Body mass index, abdominal fatness and
524 pancreatic cancer risk: a systematic review and non-linear dose-response meta-analysis
525 of prospective studies. *Ann Oncol* 2012;23(4):843–52.
- 526 20 Orsini N. From floated to conventional confidence intervals for the relative risks based
527 on published dose-response data. *Comput Methods Programs Biomed* 2010;98(1):90–93.
- 528 21 Borenstein M, Higgins JPT, Hedges LV, et al. Basics of meta-analysis: I(2) is not an
529 absolute measure of heterogeneity. *Res Synth Methods* 2017;8(1):5–18.
- 530 22 Egger M, Davey Smith G, Schneider M, et al. Bias in meta-analysis detected by a
531 simple, graphical test. *BMJ* 1997;315(7109):629.
- 532 23 Sterne JAC, Harbord RM. Funnel plots in meta-analysis. *Stata J* 2004;4(2):127–41.
- 533 24 Bertram. Cadmus, Stefanick ML, Saquib N, et al. Physical activity, additional breast
534 cancer events, and mortality among early-stage breast cancer survivors: findings from
535 the WHEL Study. *Cancer Causes Control* 2011;22(3):427–35.
- 536 25 Stewart RAH, Held C, Hadziosmanovic N, et al. Physical activity and mortality in
537 patients with stable coronary heart disease. *J Am Coll Cardiol* 2017;70(14):1689–700.

- 538 26 Glas NA de, Fontein DBY, Bastiaannet E, et al. Physical activity and survival of
539 postmenopausal, hormone receptor-positive breast cancer patients results of the
540 Tamoxifen Exemestane Adjuvant Multicenter Lifestyle Study. *Cancer*
541 2014;120(18):2847–54.
- 542 27 Glenn KR, Slaughter JC, Fowke JH, et al. Physical activity, sedentary behavior and all-
543 cause mortality among blacks and whites with diabetes. *Ann Epidemiol* 2015;25(9):649–
544 55.
- 545 28 Irwin ML, McTiernan A, Manson JE, et al. Physical activity and survival in
546 postmenopausal women with breast cancer: results from the Women's Health Initiative.
547 *Cancer Prev Res* 2011;4(4):522–29.
- 548 29 Hu G, Eriksson J, Barengo NC, et al. Occupational, commuting, and leisure-time
549 physical activity in relation to total and cardiovascular mortality among Finnish subjects
550 with type 2 diabetes. *Circulation* 2004;110(6):666–73.
- 551 30 Gerber Y, Myers V, Goldbourt U, et al. Long-term trajectory of leisure time physical
552 activity and survival after first myocardial infarction: a population-based cohort study.
553 *Eur J Epidemiol* 2011;26(2):109–16.
- 554 31 Wannamethee SG, Shaper AG, Walker M. Physical activity and mortality in older men
555 with diagnosed coronary heart disease. *Circulation* 2000;102(12):1358–63.
- 556 32 Bradshaw PT, Ibrahim JG, Khankari N, et al. Post-diagnosis physical activity and
557 survival after breast cancer diagnosis: the Long Island Breast Cancer Study. *Breast*
558 *Cancer Res Treat* 2014;145(3):735–42.
- 559 33 Maliniak ML, Patel AV, McCullough ML, et al. Obesity, physical activity, and breast
560 cancer survival among older breast cancer survivors in the Cancer Prevention Study-II
561 Nutrition Cohort. *Breast Cancer Res Treat* 2018;167(1):133–45.

- 562 34 Bao P-P, Zhao G-M, Shu X-O, et al. Modifiable lifestyle factors and triple-negative
563 breast cancer survival: a population-based prospective study. *Epidemiology*
564 2015;26(6):909–16.
- 565 35 Chen X, Lu W, Zheng W, et al. Exercise after diagnosis of breast cancer in association
566 with survival. *Cancer Prev Res* 2011;4(9):1409–18.
- 567 36 Holmes MD, Chen WY, Feskanich D, et al. Physical activity and survival after breast
568 cancer diagnosis. *JAMA* 2005;293(20):2479–86.
- 569 37 Irwin ML, Smith AW, McTiernan A, et al. Influence of pre- and postdiagnosis physical
570 activity on mortality in breast cancer survivors: the health, eating, activity, and lifestyle
571 study. *J Clin Oncol* 2008;26(24):3958–64.
- 572 38 Tanasescu M, Leitzmann MF, Rimm EB, et al. Physical activity in relation to
573 cardiovascular disease and total mortality among men with type 2 diabetes. *Circulation*
574 2003;107(19):2435–39.
- 575 39 Tian X, Du H, Li L, et al. Fruit consumption and physical activity in relation to all-cause
576 and cardiovascular mortality among 70,000 Chinese adults with pre-existing vascular
577 disease. *PLoS ONE* 2017;12(4).
- 578 40 Holick CN, Newcomb PA, Dietz-Trentham A, et al. Physical activity and survival after
579 diagnosis of invasive breast cancer. *Cancer Epidemiol Biomarkers Prev*
580 2008;17(2):379–86.
- 581 41 Ammitzbøll G, Sogaard K, Karlsen RV, et al. Physical activity and survival in breast
582 cancer. *Eur J Cancer* 2016;66:67–74.
- 583 42 Sternfeld B, Weltzien E, Quesenberry CP, JR., et al. Physical activity and risk of
584 recurrence and mortality in breast cancer survivors: findings from the LACE study.
585 *Cancer Epidemiol Biomarkers Prev* 2009;18(1):87–95.

- 586 43 Sluik D, Buijsse B, Muckelbauer R, et al. Physical activity and mortality in individuals
587 with diabetes mellitus: a prospective study and meta-analysis. *Arch Intern Med*
588 2012;172(17):1285–95.
- 589 44 Sone H, Tanaka S, Suzuki S, et al. Leisure-time physical activity is a significant
590 predictor of stroke and total mortality in Japanese patients with type 2 diabetes: analysis
591 from the Japan Diabetes Complications Study (JDCS). *Diabetologia* 2013;56(5):1021–
592 30.
- 593 45 Janssen I, Jolliffe CJ. Influence of physical activity on mortality in elderly with coronary
594 artery disease. *Med Sci Sports Exerc* 2006;38(3):418-7.
- 595 46 Gregg EW, Gerzoff RB, Caspersen CJ, et al. Relationship of walking to mortality among
596 US adults with diabetes. *Arch Intern Med* 2003;163(12):1440–47.
- 597 47 Mons U, Hahmann H, Brenner H. A reverse J-shaped association of leisure time
598 physical activity with prognosis in patients with stable coronary heart disease: evidence
599 from a large cohort with repeated measurements. *Heart* 2014;100(13):1043–49.
- 600 48 Moholdt T, Lavie CJ, Nauman J. Interaction of physical activity and body mass index on
601 mortality in coronary heart disease: data from the Nord-Trøndelag Health Study. *Am J*
602 *Med* 2017;130(8):949–57.
- 603 49 Garcia-Aymerich J, Lange P, Benet M, et al. Regular physical activity reduces hospital
604 admission and mortality in chronic obstructive pulmonary disease: a population based
605 cohort study. *Thorax* 2006;61(9):772–78.
- 606 50 Ainsworth BE, Haskell WL, Herrmann SD, et al. 2011 Compendium of physical
607 activities: a second update of codes and MET values. *Med Sci Sports Exerc*
608 2011;43(8):1575–81.

- 609 51 Sterne JAC, Sutton AJ, Ioannidis JPA, et al. Recommendations for examining and
610 interpreting funnel plot asymmetry in meta-analyses of randomised controlled trials.
611 *BMJ* 2011;343:d4002.
- 612 52 Sedgwick P. Meta-analyses: how to read a funnel plot. *BMJ* 2013;346(mar01 2):f1342-
613 f1342.
- 614 53 Wen CP, Wai JPM, Tsai MK, et al. Minimum amount of physical activity for reduced
615 mortality and extended life expectancy: a prospective cohort study. *The Lancet*
616 2011;378(9798):1244–53.
- 617 54 Ekelund U, Tarp J, Steene-Johannessen J, et al. Dose-response associations between
618 accelerometry measured physical activity and sedentary time and all cause mortality:
619 systematic review and harmonised meta-analysis. *BMJ* 2019;366:l4570.
- 620 55 Craig R, Mindell J, Hirani V. Health survey for England. London: National Centre for
621 Social Research 2009.
- 622 56 Shiroma EJ, Lee I-M. Can we proceed with physical activity recommendations if
623 (almost) no clinical trial data exist on mortality? *Br J Sports Med* 2018;52(14):888–89
624 (accessed 2 Aug 2018).
- 625 57 Wade KH, Richmond RC, Davey Smith G. Physical activity and longevity: How to
626 move closer to causal inference. *Br J Sports Med* 2018;52(14):890–91 (accessed 2 Aug
627 2018).
- 628 58 Hill AB. The environment and disease: association or causation? *Proc R Soc Med*
629 1965;58:295–300.
- 630 59 World Health Organization. Global action plan on physical activity 2018-2030: more
631 active people for a healthier world. Geneva: World Health Organization 2018.

- 60 World Health Organization. Global recommendations on physical activity for health.
633 Geneva: World Health Organization 2010.
- 61 Miyachi M, Tripette J, Kawakami R, et al. "+10 min of physical activity per day": Japan
635 is looking for efficient but feasible recommendations for its population. *J Nutr Sci*
636 *Vitaminol* 2015;61 Suppl:S7-9.
- 62 Geidl W, Abu-Omar K, Weege M, et al. German recommendations for physical activity
638 and physical activity promotion in adults with noncommunicable diseases. *Pre-print*
639 2019.
- 63 Lobelo F, Rohm Young D, Sallis R, et al. Routine assessment and promotion of physical
641 activity in healthcare settings: a scientific statement from the American Heart
642 Association. *Circulation* 2018;137(18):e495-e522 (accessed 27 Jun 2018).
- 64 Geidl W, Semrau J, Pfeifer K. Health behaviour change theories: contributions to an
644 ICF-based behavioural exercise therapy for individuals with chronic diseases. *Disabil*
645 *Rehabil* 2014;36(24):2091–100.
- 65 Blaney JM, Lowe-Strong A, Rankin-Watt J, et al. Cancer survivors' exercise barriers,
647 facilitators and preferences in the context of fatigue, quality of life and physical activity
648 participation: a questionnaire-survey. *Psychooncology* 2013;22(1):186–94 (accessed 24
649 May 2017).
- 66 Malone LA, Barfield JP, Brasher JD. Perceived benefits and barriers to exercise among
651 persons with physical disabilities or chronic health conditions within action or
652 maintenance stages of exercise. *Disabil Health J* 2012;5(4):254–60.
- 67 Mulligan HF, Hale LA, Whitehead L, et al. Barriers to physical activity for people with
654 long-term neurological conditions: a review study. *Adapt Phys Activ* 2012;29(3):243–65.

Moore SC, Patel AV, Matthews CE, et al. Leisure time physical activity of moderate to vigorous intensity and mortality: a large pooled cohort analysis. *PLoS Med* 2012;9(11):e1001335.

Footnotes

Author's contributions

WG had the initial idea for this review; he is the guarantor of the study. WG, SS, EM, LM and KP designed the study, including the development of the selection criteria, the risk of bias assessment strategy, the search strategy and the data extraction strategy. EM and LM conducted the bias assessment. SS conducted the meta-analysis. WG, EM and SS prepared the first draft of this manuscript. All authors contributed substantially to the drafting of the final manuscript version. All authors have read and approved the final manuscript.

Funding statement

This research received no specific grant from any funding agency in the public, commercial or not-for-profit sectors.

Competing interests

The authors declare no conflict of interests.

Data sharing statement

Data (including the extracted contents from the searched articles) are available upon reasonable request from Dr. Wolfgang Geidl; mail: wolfgang.geidl@fau.de

Acknowledgment

We would like to thank Anna Ryan, Lukas Janz and Katja Bartsch for supporting the process of article screening. Many thanks to PD. DR. Karim Abu-Omar for his valuable advice in the preparation of the final draft.

FIGURE LEGENDS

Figure 1. PRISMA flow diagram.

Figure 2. Risk of bias graph.

Figure 3. Linear dose–response meta-analysis for the association between post-diagnosis

physical activity and all-cause mortality.

Figure 4. Non-linear dose–response meta-analysis for the association between post-diagnosis

physical activity and all-cause mortality among adults with A) breast cancer ($n = 12$); B) T2D

($n = 6$); C) IHD ($n = 8$); and D) COPD ($n = 2$). The figure includes values up to 100 MET-

h/week.

Records identified through database searching

Breast cancer
PubMed (n = 865)
Scopus (n = 821)
Web of Science
(n = 1617)

Type 2 diabetes
PubMed (n = 818)
Scopus (n = 495)
Web of Science
(n=855)

COPD
PubMed (n = 1355)
Scopus (n = 1291)
Web of Science
(n = 1476)

Heart disease
PubMed (n = 5299)
Scopus (n = 5373)
Web of Science
(n = 7851)

Depression
PubMed (n = 950)
Scopus (n = 2269)
Web of Science
(n = 2933)

Low back pain
PubMed (n = 25)
Scopus (n = 42)
Web of Science
(n = 86)

Stroke
PubMed (n = 2415)
Scopus (n = 2397)
Web of Science
(n = 2759)

Osteoarthritis
PubMed (n = 250)
Scopus (n = 271)
Web of Science
(n = 361)

Lung cancer
PubMed (n = 536)
Scopus (n = 413)
Web of Science
(n = 697)

Additional records
identified through
other sources
(n = 3)

Total records retrieved
(n = 44,521)

Duplicates removed
(n = 16,317)

Records screened for title-
abstract
(n = 28,204)

Records excluded
(n = 28,021)
Unrelated (n = 27,085)
Non clinical populations (n = 159)
Other clinical populations (n = 26)
Not dealing with PA (n = 186)
No mortality as outcome (n = 141)
Non English (n = 265)
Non in humans (n = 159)

Full-text articles assessed
for eligibility
(n = 183)

Full-text articles excluded
(n = 155):
Ineligible study design (n = 71)
Ineligible exposure (n = 46): no PA
(n = 3), pre-diagnosis PA (n = 10),
unable to quantify PA (n = 17), less
than three PA categories (n = 16)
Ineligible outcome (n = 3)
Disease-free at baseline (n = 21)
Duplicate reports (n = 7)
No full report (n = 1)
Non-English (n = 1)
Excluded from meta-analysis (n = 4)

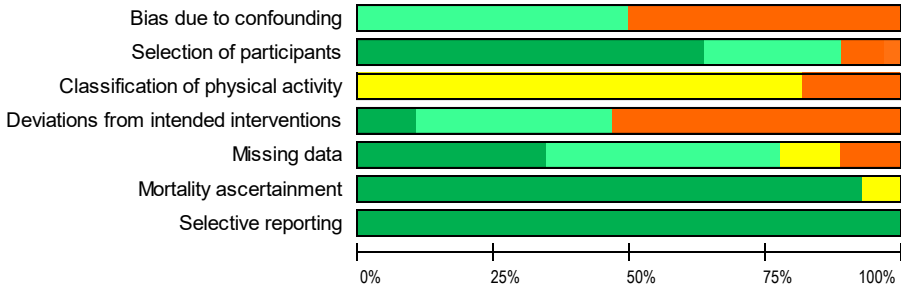
Studies included in qualitative synthesis (n = 28):
breast cancer (n = 12), COPD (n = 2), depression
(n = 0), type 2 diabetes (n = 6), heart diseases (n =
8), low back pain (n = 0), lung cancer (n = 0),
osteoarthritis (n = 0), stroke (n = 0).

Identification

Screening

Eligibility

Included



Low risk of bias



Moderate risk of bias



Unkown risk of bias

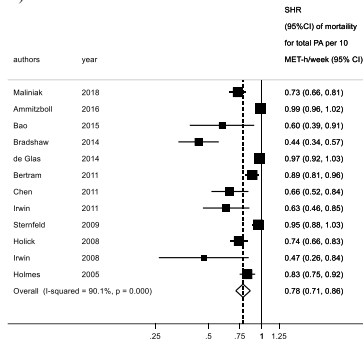


Serious risk of bias

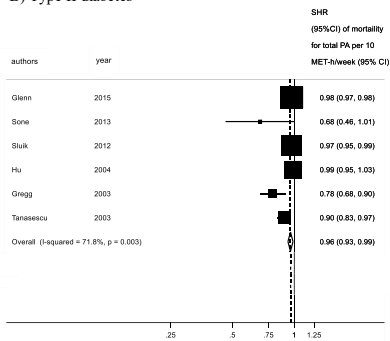


Critical risk of bias

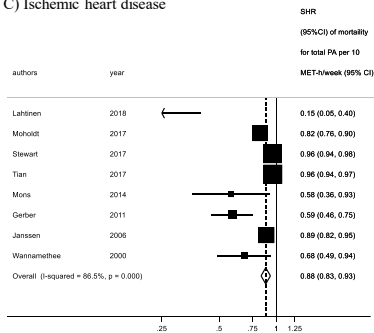
A) Breast cancer



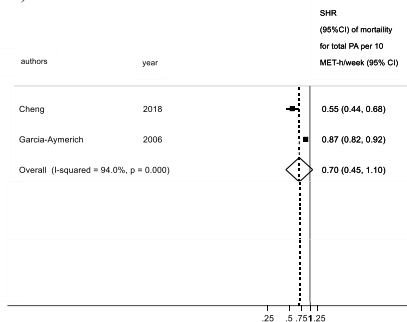
B) Type II diabetes



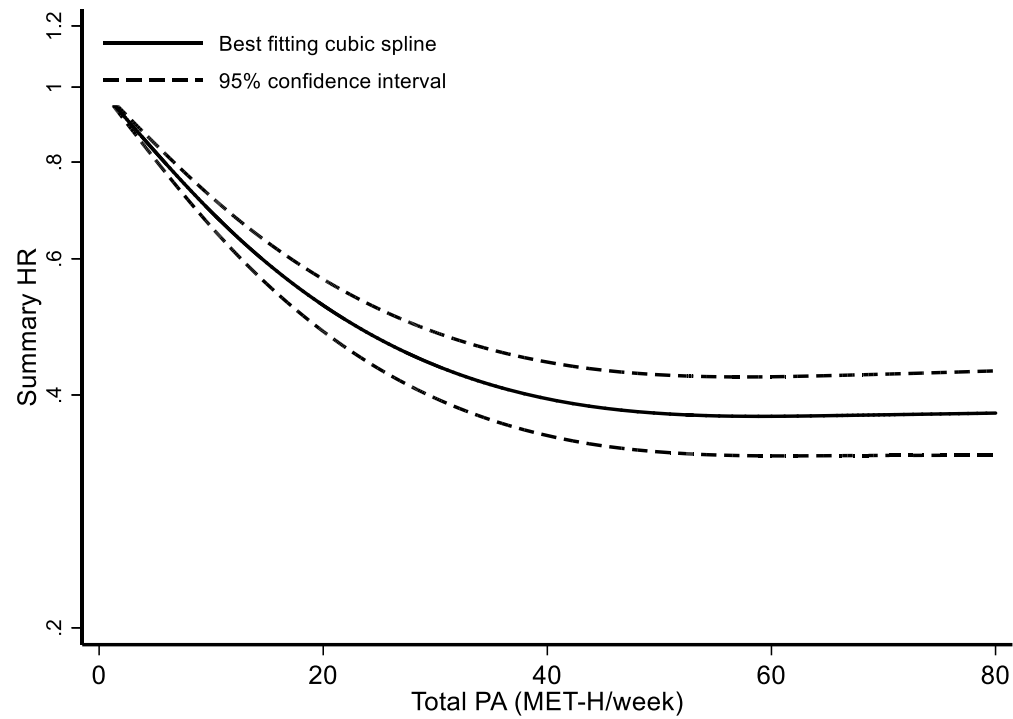
C) Ischemic heart disease



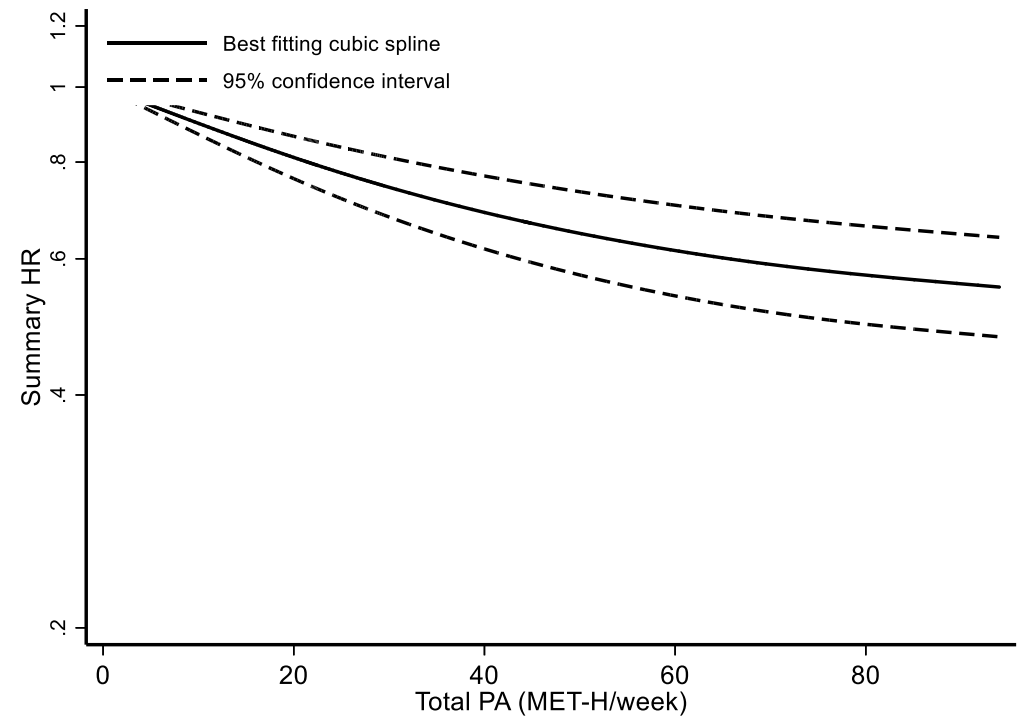
D) COPD



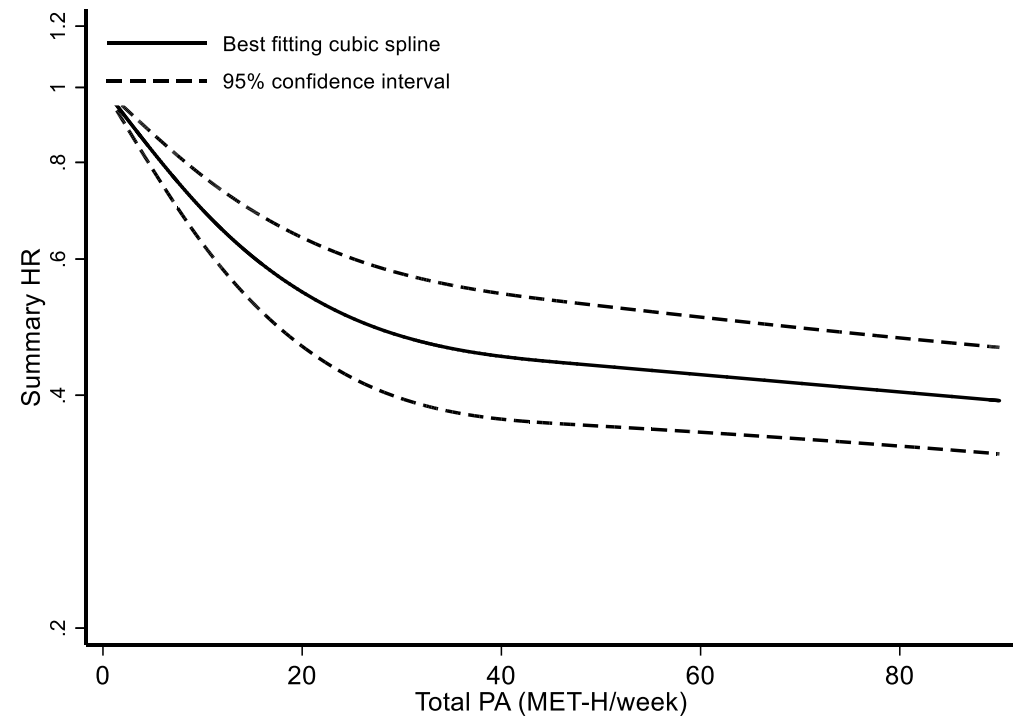
A) Breast cancer



B) Type 2 diabetes



C) Ischemic heart disease



D) COPD

