

Title: Higher energy requirement during weight-loss maintenance on a low- versus high-carbohydrate diet: secondary analyses from a randomized controlled feeding study

Authors: Cara B Ebbeling, Lisa Bielak, Paul R Lakin, Gloria L Klein, Julia MW Wong, Patricia K Luoto, William W Wong, David S Ludwig

Author affiliations:

- New Balance Foundation Obesity Prevention Center (CBE, LB, GLK, JMWW, DSL); and Institutional Centers for Clinical and Translational Research (PRL); Boston Children's Hospital and Harvard Medical School
- Department of Food and Nutrition, Framingham State University (PKL)
- USDA/ARS Children's Nutrition Research Center, Department of Pediatrics, Baylor College of Medicine (WWW)

Conflicts of interest: see section following Acknowledgements

Correspondence to:

David S Ludwig, david.ludwig@childrens.harvard.edu

300 Longwood Ave, Boston, MA 02115, USA

ORCID Number 0000-0003-3307-8544

Sources of support: This work was conducted with grants from Nutrition Science Initiative

(made possible by gifts from the Laura and John Arnold Foundation and Robert Lloyd Corkin

Charitable Foundation), New Balance Foundation, Many Voices Foundation, and Blue Cross Blue Shield. DSL was supported by a mid-career mentoring award from the National Institute of Diabetes and Digestive and Kidney Diseases (K24DK082730). Nutrition Science Initiative monitored study progress and was given an opportunity to comment on the manuscript. The funders had no role in the design and conduct of the study; collection, management, analysis, and interpretation of the data; approval of the manuscript; and decision to submit the manuscript for publication. The content of this article is solely the responsibility of the authors and does not necessarily represent the official views of the study sponsors.

Running head: Energy requirements on a low-carbohydrate diet

Abbreviations: body mass index (BMI); carbohydrate-insulin model (CIM); doubly-labeled water (DLW); dual-energy x-ray absorptiometry (DXA); estimated energy requirement for weight maintenance (EER); insulin concentration at 30 minutes following a 75-gram oral glucose load (Insulin-30); Intention-to-Treat (ITT); Per Protocol (PP); total energy expenditure (TEE)

Clinical trial registration:

ClinicalTrials.gov Identifier: NCT02068885 <https://clinicaltrials.gov/ct2/show/NCT02068885>

Manuscript length: 4500 words, 3 tables, 2 figures, and an online only supplement

ABSTRACT

Background: Longer-term feeding studies suggest that a low-carbohydrate diet increases energy expenditure, consistent with the carbohydrate-insulin model of obesity. However, the validity of methodology utilized in these studies, involving doubly-labeled water, has been questioned.

Objective: The aim of this study was to determine whether dietary energy requirement for weight-loss maintenance is higher on a low- versus high-carbohydrate diet.

Methods: The study reports secondary outcomes and exploratory analyses from a feeding study in which the primary outcome was total energy expenditure. After attaining a mean Run-in weight loss of 10.5%, 164 adults with pre-weight-loss BMI of ≥ 25 were randomly assigned to Test diets containing Low (20%), Moderate (40%) or High (60%) carbohydrate for 20 weeks. Calorie content of Test diets was adjusted to maintain individual body weight within 2 kg of the post-weight-loss value. In analyses by Intention-to-Treat (ITT, study completers, n=148) and Per Protocol (PP, those achieving the weight-loss maintenance target, n=110), we compared estimated energy requirement from 10 to 20 weeks on the Test diets using ANCOVA. Insulin secretion was assessed pre-weight-loss as insulin concentration 30 minutes following 75 grams oral glucose (Insulin-30).

Results: Estimated energy requirement was higher in the Low vs High group by models involving ITT (ranging from 181 [CI 8–353] to 223 [40–406] kcal/d; $P \leq 0.04$) and PP (ranging from 245 [43–446] to 295 [91–499] kcal/d; $P \leq 0.02$). This difference remained significant in sensitivity analyses accounting for change in adiposity and possible non-adherence. In observational analyses, pre-weight loss Insulin-30 predicted adverse change in body composition following weight loss.

Conclusions: Energy requirement was higher on a low- versus high-carbohydrate diet during weight-loss maintenance, commensurate with total energy expenditure. These data are consistent with the carbohydrate-insulin model and lend qualified support for the validity of the doubly-labeled water method with diets varying in macronutrient composition.

Key words: obesity, dietary carbohydrate, dietary fat, carbohydrate-insulin model, energy requirements, energy expenditure, feeding study, metabolism

INTRODUCTION

The independent effect of dietary composition on energy expenditure remains a topic of controversy. According to the carbohydrate-insulin model (CIM) of obesity, the high ratio of blood insulin-to-glucagon concentration in the postprandial period with consumption of a high glycemic load diet partitions metabolic fuels toward fat storage (1, 2). As a result, hunger may increase and (under some conditions, such as post-weight loss) energy expenditure may decrease relative to a low glycemic load diet. Because reduced energy expenditure following weight loss may predispose to weight regain (3-5), research into the dietary determinants of metabolic rate holds both scientific and clinical significance.

A recent meta-analysis reported little effect of dietary carbohydrate-to-fat ratio on energy expenditure (6), but the included studies had a median duration of < 1 week. As previously reviewed (2), the adaptation to a low-carbohydrate diet takes at least 2 to 3 weeks, limiting inferences about chronic macronutrient effects that can be drawn from these very short trials. The few prior studies of at least 2.5 weeks duration consistently showed a numerical advantage favoring the low-carbohydrate diet (2), but each of these had important methodological limitations, such as low statistical power, lack of randomization and physical confinement (*e.g.*, in respiratory chambers) confounding activity-related energy expenditure.

In the longest feeding study addressing this question (7), we reported that total energy expenditure (TEE) was about 200 to 250 kcal/d higher on a low- vs high-carbohydrate Test diet throughout 20 weeks of weight-loss maintenance, as determined using doubly-labeled water (DLW) methodology. However, the validity of DLW with diets varying in macronutrient composition has recently been called into question (8).

97 The aim of the present study was to examine estimated energy requirement (EER) for
98 maintenance of stable weight following weight loss in our study, based on the energy provided to
99 participants in carefully controlled Test diets. If TEE increases with reduction in dietary
100 carbohydrate and DLW methodology is valid for measuring TEE when comparing different
101 macronutrient diets, we would expect to see corresponding dietary effects on EER.

METHODS

Overview of parent study design and original findings

This study presents secondary and exploratory (*post hoc*) analyses from a feeding trial for which the methods (trial design, participants, dietary interventions, sample size, randomization), participant flow, adverse events and primary outcome were previously reported (7, 9, 10). Briefly, 164 participants with overweight or obesity who lost at least 10% of their body weight during the Run-in phase on a hypocaloric diet were randomly assigned to low- (LOW, 20% carbohydrate, 60% fat), moderate- (MOD; 40% carbohydrate, 40% fat) or high- (HIGH, 60% carbohydrate, 20% fat) carbohydrate Test diets controlled for protein (20%). During the 20-week Test phase, dietary energy provided to participants in prepared meals was adjusted with the aim of keeping weight within 2 kg of the post-weight loss, pre-randomization baseline value. TEE was measured using DLW at four time points: 1) pre-weight loss (PRE), 2) start of trial (START, weeks -2 to 0, post-weight-loss), 3) midpoint of Test phase (MID, weeks 8 to 10) and 4) end of Test phase (END, weeks 18 to 20). The primary finding of the trial was that TEE was significantly greater on LOW vs HIGH in an Intention-to-Treat model (ITT: 209 kcal/d, n=162, $P=0.002$ for overall group effect) and a Per Protocol model that excluded participants who did not achieve weight stability at 10 or 20 weeks (PP: 278 kcal/d, n=120, overall $P<0.001$).

We previously conducted a preliminary analysis in the PP group (n=120, including 10 participants who achieved weight stability at MID but did not complete the trial), comparing change in estimated energy intake from START to the average of MID (10 weeks) and END (20 weeks) using dietary data for the days when we assessed TEE (7). Change in energy intake increased in a pattern consistent with the dietary effect on TEE, though without significant group differences (HIGH 139, MOD 175, LOW 269 kcal/d, overall $P=0.36$). This pattern strengthened

as expected among those in the highest tertile of insulin secretion at PRE (37, -24, 340 kcal/d, respectively, overall $P=0.05$). However, as discussed in our initial report, these preliminary analyses were imprecise and inaccurate, with probable bias against those with higher energy requirements, thereby limiting scientific inference.

Conceptual approach for current analyses

For the current study, we considered four potential reasons for imprecision and inaccuracy in the initial estimates of energy requirements used to calculate energy intake: 1) excessive variability in the START estimate used in models of change; 2) the limited time frame (using dietary data only from the days when we assessed TEE) for evaluating energy intake during the Test phase; 3) unaddressed factors affecting EER, including provision of additional snacks to some individuals to assist with weight-loss maintenance and 4) change in body composition affecting energy balance calculations.

To begin our exploration of these issues, we extracted data from food production sheets throughout the Test phase on daily dietary energy provided to every participant, as periodically adjusted to maintain weight loss within the target range. Visual inspection revealed large changes (>500 kcal/d) in dietary energy provided for many participants in all 3 diet groups from the weight stabilization period at the end of the Run-in phase through the first few weeks of the Test phase, demonstrating that our initial estimates of energy requirements were imprecise. By MID (week 10 of the Test phase), estimates of energy requirements had stabilized, with relatively few participants requiring substantial adjustments in dietary energy to maintain weight loss from that point through END (week 20). This imprecision would not have biased the primary study outcome involving TEE, because the initial dietary energy level for each participant was

established prior to randomization and there was no significant difference in body weight among the diet groups during the assessment periods. However, imprecision in the START value for energy intake would erode power for the change models originally reported (11, 12).

As an alternative approach to the inherent limitations of an imprecise baseline (START value) in measurement of a change variable, we examined EER with general linear models (ANCOVA) adjusted for baseline covariates that would plausibly influence energy requirements (such as age, sex and weight). We focused on the daily average energy provided from 10 to 20 weeks as our most accurate measure of EER, with primary interest in the HIGH vs LOW diet comparison in the PP analysis to maximize power. Consistent with the approach used with our original TEE outcome, we calculated EER per kg and normalized the results as kcal/d using the average START weight of our participants (82 kg). We examined diet group differences in EER at START and during weeks 10 through 20 of the Test phase, with and without adjustment for the START value. In sensitivity analyses, we explored how changes in body fat mass might influence EER and how possible non-adherence to energy prescription might influence EER.

Assessment of Test diet energy

Details regarding the dietary interventions were published previously (9, 10). In brief, the hypocaloric Run-in diet comprised 45% of energy from carbohydrate, 35% from fat, and 25% from protein. Eucaloric Test diets were controlled for protein and varied in carbohydrate-to-fat ratio as indicated above. Standardized menus were calculated for 2000-kcal Run-in and Test diets using Food Processor Nutrition Analysis Software (ESHA Research Inc., Salem, OR) with energy distributed across breakfast (450 kcal), lunch (650 kcal), dinner (650 kcal), and an evening snack (250 kcal). Data for each menu item were exported from the ESHA Food

Processor to Excel (Microsoft, Redmond, WA), and gram weights were imported from Excel into SAS (SAS Institute Inc., Cary, NC). In SAS, 2000-kcal menus were scaled to coincide with individualized energy levels, and food production sheets (1 sheet per participant per meal or snack) were generated to specify gram portions of each menu item.

Estimating and adjusting Run-in and Test diet energy levels. Individualized energy levels were estimated and then adjusted when necessary, but not more frequently than every two weeks. To inform adjustments, body weight was measured daily using Wi-Fi scales (Withings Inc., Cambridge, MA) synced with a study-specific online portal (SetPoint Health, Needham, MA). At the beginning of the Run-in phase (PRE), energy levels were set at 60% of estimated needs (13), and then adjusted to achieve targeted weight loss. Energy levels for weight stabilization at the end of the Run-in phase were estimated based on rate of weight loss over 20 days: energy intake during weight loss (kcal/day) + rate of weight loss (kg/day \times 7700 kcal/kg). During the Test phase, energy levels were adjusted when deviation from the START anchor weight exceeded ± 2 kg and/or the slope of weight regressed on time was ≥ 15 g per day over 14 days.

Some participants received unit bars (100 kcal per bar with diet-specific carbohydrate-to-fat ratio) and/or *ad libitum* snacks, in addition to the meals and snacks listed on food production sheets. The purpose of providing unit bars was to: 1) replace some of the meal calories, when large portions were a barrier to consuming all provided food and 2) immediately adjust energy levels, before meal adjustments could be implemented according to established production cycles, to achieve weight-loss maintenance (± 2 kg of START anchor weight). The purpose of providing foods for *ad libitum* snacks (n=11) was to halt continued weight loss in participants who were already consuming large meals. Examples of snack foods (for each diet) included: banana, skim milk (HIGH); bagel chips, chocolate chips, apple, banana, nut butters (MOD); nuts,

nut butters, dark chocolate, whole milk (LOW). We conservatively estimated energy content of *ad libitum* snacks at 200 kcal per day, for the days when participants (n=11) received snacks. In preliminary analyses, we noted similar study outcomes with energy content estimated at 500 kcal per day (data not presented).

Quantifying unconsumed energy. Data on food consumption recorded in the online portal were used to calculate daily unconsumed energy, which totaled < 5% throughout the study. For supervised meals, unconsumed menu items were weighed, and gram amounts were entered into the portal by food service staff. Menu data exported from the ESHA Food Processor to Excel were used to create a “food library,” interfaced with the portal, for converting gram amounts to kcal. For unsupervised take-out meals, percentages of menu items consumed were recorded by participants, using a form in the online portal that was prepopulated with daily menus from food production sheets, so that unconsumed energy could be calculated as follows: energy provided – (energy provided × percentage consumed). Unconsumed energy during supervised and unsupervised meals was summed to obtain a total for each day. Food consumption data for calculating unconsumed energy were not available electronically for cohort 1 (n=25 in ITT, n=18 in PP), prior to developing the online portal, and assumed to be 0 (this methodological limitation is addressed in a sensitivity analysis).

Calculating EER. An EER for each participant was calculated as the average daily energy level during weeks 10 through 20 of the Test phase. The calculation included energy in weighed meals and snacks (as specified on food production sheets), *ad libitum* snacks (200 kcal/d), and unit bars (based on the number provided), with correction for unconsumed energy in weighed meals and snacks. The first 10 weeks of the Test phase was considered adequate time for physiological adaptations to the Test diets, that could affect energy metabolism and fluctuations

in body weight (2), and fine-tuning initially imprecise estimates of energy levels for weight-loss maintenance. We also calculated EER for the first day of the Test phase (EER at START), to obtain insight regarding the level of imprecision and inaccuracy in the initial estimates of energy requirements, and for use as a baseline covariate in a statistical model.

Assessment of body composition

We assessed body composition by dual-energy X-ray absorptiometry (DXA, Discovery A, Hologic Inc., Bedford, MA, USA) and isotope dilution. Data from DXA, the more precise method, were available for PRE, START and END. Data from isotope dilution were available for the same time points and also MID, allowing assessment of adiposity from weeks 10 through 20 of the Test phase which was the exact timeframe of interest for determining EER (after the initial 10-week period of physiological adaptation). Total body water was estimated using the isotope dilution space for ^{18}O (calculated as previously described) (9), divided by 1.01 (to correct for binding to non-exchangeable sites) (14). Total body water was divided by 0.73 to estimate fat-free mass (FFM). Fat mass (FM) was calculated by subtracting FFM from total body weight. Percent body fat was calculated as: $\text{FM} / \text{body weight} \times 100\%$.

Statistical analyses

For all summary and inferential computations, we used SAS 9.4 (SAS Institute, Cary, NC).

Descriptive data. We inspected raw distributions of EER during the Test phase for the ITT and PP groups and compared raw distributions and descriptive data (mean and median) with those of TEE.

Variability in Estimated Energy Requirement at START. We used partial correlation analysis to determine whether excessive variability in EER might have obscured the effect of diet on change in EER in our preliminary analyses (7). Controlling for diet group, we evaluated partial correlation of the residuals from models comparing EER at START with EER during the Test phase (MID through END), and TEE at START with TEE during the Test Phase (average of MID and END).

Diet effect on Estimated Energy Requirement. The analytic framework for statistical inference on EER and other outcomes was the general linear model (GLM) including ANCOVA. We evaluated EER at START (with body weight at START included as a covariate) and EER during the Test phase (with and without EER at START as a covariate). To be consistent with the approach in our prior study (7), the reported models include diet group assignment and a design variable (a polytomous covariate labeled cohort, which captured all combinations of study site, cohort, and enrollment wave, including 11 categories). Because inclusion of this variable utilizes 10 degrees of freedom, and we have no reason to hypothesize confounding by cohort, a model without this adjustment was evaluated. Other variables in the primary model included sex, age at randomization, weight loss during the Run-in phase (expressed as a percentage of PRE body weight), START weight, and START TEE. One participant who developed a medical condition (hypothyroidism) that affects energy expenditure was excluded in the final analysis plan on an *a priori* basis from the primary outcome in our prior study (7, 9). We present models with and without exclusion of this individual. The outcome was the Test phase average of EER from weeks 10-20, modified from our original change (pre-to-post) analyses, in consideration of the rationale above, and as further addressed in **Figure 1**.

From parameters of the fitted models, taking account of all data, we tested two hypotheses. First, that the outcome was uniform across all diet groups, using an F test with two degrees of freedom and a $P \leq 0.05$ as a threshold for significance. The HIGH – LOW comparison was equivalent to a test for linear trend by carbohydrate proportion, given the equal increments of carbohydrate content (60%, 40%, 20%) across Test diets. In this second test, the null hypothesis was zero difference between HIGH and LOW in a two-sided Student's t test.

We conducted four sensitivity analyses using GLM (ANCOVA) to explore the potential effects of changes in body composition and non-adherence on EER during weight-loss maintenance. These analyses were based on our most conservative estimate of EER in the weight stable PP group (Table 2, model 2). For every kilogram increase or decrease in FM from START to END, assessed by DXA, we subtracted or added 55 kcal/d ($7700 \text{ kcal/kg} \div 140 \text{ days}$, the relevant time period). Similarly, for change in FM from MID to END, assessed by isotope dilution, we subtracted or added 110 kcal/d ($7700 \text{ kcal/kg} \div 70 \text{ days}$, the relevant time period). As a proxy measure of non-adherence, we defined energy discrepancy as the ratio of EER-to-TEE and excluded participants with energy discrepancy in the top quintile (those most likely to have under-consumed provided foods) and bottom quintile (those most likely to have consumed foods off protocol). In a final model, we excluded individuals in cohort 1, for whom we had no food consumption data in the online portal to calculate unconsumed energy as a measure of non-adherence.

Changes in body composition. We analyzed change in percent body fat from START to END with DXA, and also from MID to END with isotope dilution. These models included only design variables (diet group, cohort). In cross-sectional and prospective observational analyses involving the Run-in phase, we evaluated the associations of Insulin-30 (measured at PRE) with

284 PRE body weight or percent body fat by DXA, and with change in percent body fat by DXA
285 (from PRE to START). These models include participant characteristics (sex, age).

286

287 *Ethics*

288 The study protocol was approved by the institutional review board at Boston Children's Hospital
289 and registered at ClinicalTrials.gov NCT02068885.

RESULTS

Descriptive data

We randomly assigned 164 participants to a diet group for the Test phase. Of these, 148 completed the trial and were included in the ITT analyses. Among the completers, 110 achieved weight-loss maintenance and were included in PP analyses. **Table 1** summarizes baseline data describing the cohort, including those who completed the weight loss Run-in phase (for analysis of Insulin-30 and body composition) and those in the ITT and PP groups (for the trial outcomes). About two-thirds of the cohort were women, mean age was ~30 years, and mean BMI at PRE was ~32 kg/m². **Supplemental Figure 1** illustrates raw distributions of EER for the ITT and PP groups. Overall, the median and mean values of EER were 89.2% and 87.7% of TEE, respectively.

Variability in Estimated Energy Requirement at START

To determine whether excessive variability might have obscured the effect of diet on energy requirements in our preliminary analyses of change (7), we compared EER at START with EER measured from weeks 10 through 20 of the Test phase. As shown in **Figure 1**, the partial R² after adjusting for diet group (0.54) was much weaker than the partial R² involving TEE (0.85). These findings suggest that analytic models of change have adequate power for evaluating TEE but not EER (11, 12), providing rationale for using an alternative approach (ANCOVA).

Diet effect on Estimated Energy Requirement

Table 2 shows EER by diet group in the ITT and PP analyses. At START, EER did not differ by diet. From weeks 10 through 20 of the Test phase, EER was significantly higher in LOW vs

HIGH, ranging from a mean of 181 to 323 kcal/d in models with varying covariate structure. In sensitivity analyses (**Table 3**), this diet effect remained robust after accounting for concurrent change in body composition, excluding individuals for whom the EER-to-TEE ratio raised the possibility of non-adherence, and additional exclusion of individuals in cohort 1 lacking non-adherence data from the online portal. The nominal order of effect by group, with MOD intermediate between LOW and HIGH, showed a pattern similar to that of TEE. The ratio of EER-to-TEE did not differ by diet group (**Supplemental Figure 2**), indicating no selective non-adherence or bias in group comparisons.

Changes in body composition

As shown in **Supplemental Table 1**, there were no significant diet group differences in adiposity by DXA or isotope dilution throughout the study.

In cross-sectional analyses, Insulin-30 was strongly associated with PRE body weight (4.4 kg per 100 μ U/mL increase in Insulin-30, P for linear trend = 0.0005; **Figure 2A**) and adiposity (1.2% body fat per 100 μ U/mL increase in Insulin-30, P for linear trend = 0.005; data not depicted). Insulin-30 also predicted change in adiposity during weight loss, with percent body fat decreasing less from PRE to START among individuals in the top versus bottom quintiles of Insulin-30 (-3.1% vs -3.8%, $P=0.0085$; P for linear trend = 0.002; **Figure 2B**). This prospective association was moderately attenuated, but remained statistically significant, with further adjustment for PRE body weight, BMI or adiposity. (However, inclusion of these adiposity measures may over-correct the models, due to potential collinearity with Insulin-30.)

DISCUSSION

In this analysis of a large feeding study, we observed higher estimated energy requirement on a low- vs high- carbohydrate diet during weight-loss maintenance. The magnitude of this effect (about 200 to 300 kcal/d, or ≥ 50 kcal/d for every 10% decrease in carbohydrate as a proportion of total energy) and the numerical order across groups (LOW > MOD > HIGH) are commensurate with previously reported changes in TEE (7), supporting the CIM. If reproducible and generalizable, this finding may inform the scientific understanding of how dietary composition affects metabolism and the design of more efficacious long-term obesity treatment.

These results also have relevance to outpatient metabolic study methods. In a recent analysis of an observational pilot study, Hall *et al.* (8) questioned the validity of DLW methodology to compare diets differing in carbohydrate-to-fat ratio, in part due to the “theoretical possibility that ... [differential] fluxes through biosynthetic pathways” could inflate measured energy expenditure on diets with lower carbohydrate content. However, their estimates of isotopic trapping through *de novo* lipogenesis, the pathway of greatest potential concern, appear overstated, and DLW has worked well in animals with diets varying widely in macronutrient ratio, including obligate carnivores (7, 15). The congruence in dietary effect on energy intake and expenditure from our trial provide qualified validation for the use of DLW in human diet studies, though the possibility of other, unrecognized biases cannot be excluded. In contrast to the theoretical concerns involving DLW, whole room calorimetry – the other gold standard method – has been shown to underestimate adaptive thermogenesis (16) because of inherent constraints on physical activity energy expenditure (a confounding issue in the analyses of Hall *et al.* (8)). Recognizing that reduction in dietary carbohydrate has been hypothesized to attenuate adaptive thermogenesis with weight loss (2, 7), macronutrient studies utilizing whole

room calorimetry may yield results biased against low-carbohydrate diets. Indeed, the prior validation study (16) found a better correspondence between dietary calorie titration and TEE – the approach we used here – for DLW vs whole room calorimetry under several physiological conditions.

In observational analyses, pre-weight loss insulin secretion was strongly associated with greater body weight and adiposity before weight loss, and prospectively with an adverse change in body composition (a lesser decrease in adiposity) following weight loss, potentially predisposing to weight regain. Although we cannot rule out reverse causation and confounding, the findings are consistent with other lines of investigation free from such limitations. According to the CIM, increased primary insulin secretion (versus secondary hyperinsulinemia in compensation for insulin resistance) partitions metabolic fuels away from oxidation and instead into storage, lowering energy expenditure and promoting adiposity. Indeed, individual predisposition to high insulin secretion has been linked to weight gain in translational research (17), a cohort study (18), a Mendelian randomization study (19) and several clinical trials (20, 21). These relationships appear to be strongly attenuated on a low-glycemic load diet, as was also reported for TEE among individuals with high insulin secretion in our recent trial (7). In contrast, DIETFITS found no effect modification involving insulin secretion for weight loss on lower-fat vs lower-carbohydrate diets, but that null finding might relate to the focus on reducing sugar and other processed carbohydrates throughout the trial, resulting in a low glycemic load in both diet groups (22). Thus, our current study provides additional data on a novel diet-phenotype interaction and highlights a high-risk subgroup that may do especially well with dietary carbohydrate restriction, similar to findings from DiOGenes and other trials involving fasting glucose or insulin resistance (23).

Strengths of this study include relatively large size and long duration for a feeding trial, demonstration of weight stability during the Test phase, state-of-the-art methods to produce nutrient-controlled diets and monitor quality control, concurrent measurement of body composition, and sufficient power to conduct informative sensitivity analyses. The main limitation is non-adherence to the Test diets. This methodological issue, common to all long-term outpatient feeding studies, could lead to an overestimation of the diet effect on energy requirement under two conditions: if individuals on the low- versus high-carbohydrate diet consumed less of the provided food than reported when not under direct observation; or if those on the high- versus low-carbohydrate diet consumed more food off protocol. Either of these scenarios might arise if the low-carbohydrate diet were less palatable or more satiating. Conversely, the high-carbohydrate diet was substantially lower in energy density; the diet effect could be underestimated if participants in that group had difficulty consuming the larger volume of food. However, we designed the diets to be as similar as possible in types of foods included, cooking methods and palatability (10). Moreover, we saw no discrepancy in the ratio of EER-to-TEE across diet groups, nor evidence of overall bias in a sensitivity analyses excluding individuals with EER-to-TEE ratio in the highest quintile (for whom energy intake might have been overestimated) and in the lowest quintile (for whom energy intake might have been underestimated). Moreover, the findings strengthened in the PP analyses, involving participants who demonstrated successful weight-loss maintenance as an objective measure of compliance (the opposite would be expected if non-adherence contributed importantly to the observed effect).

Other study limitations include the inherent imprecision of methods for measuring small changes in body composition during weight-loss maintenance, and possible inaccuracy arising

from changes in body water on diets differing in macronutrient content. However, on the latter issue, any changes in body water resulting from reduction in dietary carbohydrate would stabilize after a few weeks, allowing for an unconfounded measurement of body composition between 10 and 20 weeks of the Test phase, the relevant period for our calculations of energy requirements. Furthermore, our estimates of energy requirements vary based on covariate structure of the analytic models and other assumptions, and the 3-way diet comparison is not significant in some models. However, the comparison between the low- and high-carbohydrate diet was consistently significant as hypothesized in multiple models and sensitivity analyses. In light of the foregoing, our estimates of the magnitude of the diet effect on energy requirements should be interpreted cautiously.

Because of the inherent limitations of outpatient feeding studies discussed here, some suggest that the only informative diet studies are those conducted on metabolic wards (24), but these too have major limitations. For logistical and financial reasons, ward studies rarely exceed a few weeks in duration – too short to distinguish transient adaptive processes from the chronic metabolic effects of macronutrients (2, 25). Ward studies also entail an artificial environment, constraint on spontaneous physical activities, and the psychobiological effects of social isolation and other stresses. Moreover, even with presumably maximum control, substantial “unaccounted energy” – the basis of criticisms of our trial by Hall *et al.* (26) – may occur, as was seen in the control diet arm of a recent trial by Hall *et al.* (27). Discrepancies in energy balance are unsurprising, considering the cumulative error that would arise in comparisons encompassing three imprecise measures (energy intake, energy expenditure, and body energy stores), even with optimal conditions.

To elucidate underlying mechanisms involving diet and chronic disease, we will need a variety of complementary study designs, novel methods for ensuring high levels of dietary control for longer periods, multiple methods for measuring energy expenditure and substrate metabolism, and attention to effect modification by biological predisposition (2, 23, 28). Although research into more powerful behavioral and environmental interventions is also warranted, these approaches will be most effective when informed by accurate knowledge of the metabolic effects of dietary composition.

Acknowledgments

We thank Steven Heymsfield and Henry Feldman for critical feedback on the manuscript, and Stephanie Dickinson for verifying the data analyses. The study was funded by Nutrition Science Initiative (made possible by gifts from the Laura and John Arnold Foundation and Robert Lloyd Corkin Charitable Foundation), New Balance Foundation, Many Voices Foundation, and Blue Cross Blue Shield. DSL was supported by a mid-career mentoring award from the National Institute of Diabetes and Digestive and Kidney Diseases (K24DK082730).

Conflicts of Interest Statement

CBE and DSL have conducted research studies examining the carbohydrate-insulin model funded by the National Institutes of Health and philanthropic organizations unaffiliated with the food industry; DSL received royalties for books on obesity and nutrition that recommend a low-glycemic load diet. No other author has relevant disclosures.

Author Contributions

CBE designed study, secured funding, interpreted data, participated in drafting the manuscript; LB helped design the study and analyzed the dietary records; PRL conducted the statistical analysis, interpreted data and participated in manuscript revision; GLK directed the parent and participated in manuscript revision; JMWW co-directed the parent study, helped design the Test diets and participated in manuscript revision; PKL co-directed the parent study at the performance site and participated in manuscript revision; WWW advised on double labeled water methodology and participated in manuscript revision; DSL, designed study, secured funding, interpreted data, participated in drafting the manuscript.

Data Sharing

The protocol and full dataset is available at Open Science Framework (<https://osf.io/rvbuy/>).

REFERENCES

1. Ludwig DS. The glycemic index: physiological mechanisms relating to obesity, diabetes, and cardiovascular disease. *Jama*. 2002;287(18):2414-23.
2. Ludwig DS, Ebbeling CB. The Carbohydrate-Insulin Model of Obesity: Beyond "Calories In, Calories Out". *JAMA Intern Med*. 2018;178(8):1098-103.
3. Astrup A, Gotzsche PC, van de Werken K, Ranneries C, Toubro S, Raben A, et al. Meta-analysis of resting metabolic rate in formerly obese subjects. *Am J Clin Nutr*. 1999;69(6):1117-22.
4. Rosenbaum M, Hirsch J, Gallagher DA, Leibel RL. Long-term persistence of adaptive thermogenesis in subjects who have maintained a reduced body weight. *Am J Clin Nutr*. 2008;88(4):906-12.
5. Tremblay A, Royer MM, Chaput JP, Doucet E. Adaptive thermogenesis can make a difference in the ability of obese individuals to lose body weight. *Int J Obes (Lond)*. 2013;37(6):759-64.
6. Hall KD, Guo J. Obesity Energetics: Body Weight Regulation and the Effects of Diet Composition. *Gastroenterology*. 2017;152(7):1718-27 e3.
7. Ebbeling CB, Feldman HA, Klein GL, Wong JMW, Bielak L, Steltz SK, et al. Effects of a low carbohydrate diet on energy expenditure during weight loss maintenance: randomized trial. *BMJ*. 2018;363:k4583.
8. Hall KD, Guo J, Chen KY, Leibel RL, Reitman ML, Rosenbaum M, et al. Methodologic considerations for measuring energy expenditure differences between diets varying in carbohydrate using the doubly labeled water method. *Am J Clin Nutr*. 2019;109(5):1328-34.

- 484 9. Ebbeling CB, Klein GL, Luoto PK, Wong JMW, Bielak L, Eddy RG, et al. A randomized
485 study of dietary composition during weight-loss maintenance: Rationale, study design,
486 intervention, and assessment. *Contemp Clin Trials*. 2018;65:76-86.
- 487 10. Wong JM, Bielak L, Eddy RG, Stone L, Lakin PR, Sandman M, et al. An Academia-
488 Industry Partnership for Planning and Executing a Community-Based Feeding Study. *Curr*
489 *Dev Nutr*. 2018;2(9):nzy060.
- 490 11. Van Breukelen GJ. ANCOVA versus change from baseline: more power in randomized
491 studies, more bias in nonrandomized studies [corrected]. *J Clin Epidemiol*. 2006;59(9):920-
492 5.
- 493 12. Vickers AJ. The use of percentage change from baseline as an outcome in a controlled trial
494 is statistically inefficient: a simulation study. *BMC Med Res Methodol*. 2001;1:6.
- 495 13. Mifflin MD, St Jeor ST, Hill LA, Scott BJ, Daugherty SA, Koh YO. A new predictive
496 equation for resting energy expenditure in healthy individuals. *Am J Clin Nutr*.
497 1990;51(2):241-7.
- 498 14. Schoeller DA, van Santen E, Peterson DW, Dietz W, Jaspan J, Klein PD. Total body water
499 measurement in humans with ¹⁸O and ²H labeled water. *Am J Clin Nutr*.
500 1980;33(12):2686-93.
- 501 15. Ludwig DS, Ebbeling CB, Wong JMW, Wolfe RR, Wong WW. Methodological error in
502 measurement of energy expenditure by the doubly labeled water method: much ado about
503 nothing? *Am J Clin Nutr*. 2019;in press.
- 504 16. Rosenbaum M, Ravussin E, Matthews DE, Gilker C, Ferraro R, Heymsfield SB, et al. A
505 comparative study of different means of assessing long-term energy expenditure in humans.
506 *Am J Physiol*. 1996;270(3 Pt 2):R496-504.

- 507 17. Pawlak DB, Kushner JA, Ludwig DS. Effects of dietary glycaemic index on adiposity,
508 glucose homoeostasis, and plasma lipids in animals. *Lancet*. 2004;364(9436):778-85.
- 509 18. Chaput JP, Tremblay A, Rimm EB, Bouchard C, Ludwig DS. A novel interaction between
510 dietary composition and insulin secretion: effects on weight gain in the Quebec Family
511 Study. *Am J Clin Nutr*. 2008;87(2):303-9.
- 512 19. Astley CM, Todd JN, Salem RM, Vedantam S, Ebbeling CB, Huang PL, et al. Genetic
513 Evidence That Carbohydrate-Stimulated Insulin Secretion Leads to Obesity. *Clin Chem*.
514 2018;64(1):192-200.
- 515 20. Ebbeling CB, Leidig MM, Feldman HA, Lovesky MM, Ludwig DS. Effects of a low-
516 glycemic load vs low-fat diet in obese young adults: a randomized trial. *Jama*.
517 2007;297(19):2092-102.
- 518 21. Pittas AG, Das SK, Hajduk CL, Golden J, Saltzman E, Stark PC, et al. A low-glycemic load
519 diet facilitates greater weight loss in overweight adults with high insulin secretion but not in
520 overweight adults with low insulin secretion in the CALERIE Trial. *Diabetes Care*.
521 2005;28(12):2939-41.
- 522 22. Gardner CD, Trepanowski JF, Del Gobbo LC, Hauser ME, Rigdon J, Ioannidis JPA, et al.
523 Effect of Low-Fat vs Low-Carbohydrate Diet on 12-Month Weight Loss in Overweight
524 Adults and the Association With Genotype Pattern or Insulin Secretion: The DIETFITS
525 Randomized Clinical Trial. *Jama*. 2018;319(7):667-79.
- 526 23. Hjorth MF, Zohar Y, Hill JO, Astrup A. Personalized Dietary Management of Overweight
527 and Obesity Based on Measures of Insulin and Glucose. *Annu Rev Nutr*. 2018.
- 528 24. Polychronakos C. Too sweet? Macronutrients and energy expenditure; a word of caution.
529 *BMJ*. 2019;363: doi: <https://doi.org/10.1136/bmj.k4583>.

- 530 25. Ludwig DS, Astrup A, Bazzano LA, Ebbeling CB, Heymsfield SB, King JC, et al. Ultra-
531 processed food and obesity: the pitfalls of extrapolation from short studies. Cell Metab.
532 2019;online first June 20, 2019DOI:<https://doi.org/10.1016/j.cmet.2019.06.004>.
- 533 26. Hall KD, Guo J. Carbs versus fat: does it really matter for maintaining lost weight?
534 (Preprint). bioRxiv, The Preprint Server for Biology. 2019.
- 535 27. Hall KD, Ayuketah A, Brychta R, Cai H, Cassimatis T, Chen KY, et al. Ultra-Processed
536 Diets Cause Excess Calorie Intake and Weight Gain: An Inpatient Randomized Controlled
537 Trial of Ad Libitum Food Intake. Cell Metab. 2019.
- 538 28. Mendes-Soares H, Raveh-Sadka T, Azulay S, Ben-Shlomo Y, Cohen Y, Ofek T, et al.
539 Model of personalized postprandial glycemic response to food developed for an Israeli
540 cohort predicts responses in Midwestern American individuals. Am J Clin Nutr. 2019.
541

Table 1. Participant characteristics

Characteristic	All Enrolled ^a N=164	Intention-to-Treat ^b N=148	Per Protocol ^c N=110
<i>Categorical Variables, No (%)</i>			
Sex			
Men	49 (29.9%)	45 (30.4%)	33 (30.0%)
Women	115 (70.1%)	103 (69.6%)	77 (70.0%)
Hispanic Ethnicity	25 (15.2%)	21 (14.2%)	18 (16.4%)
Race			
White	128 (78.0%)	116 (78.4%)	84 (76.4%)
Black	17 (10.4%)	16 (10.8%)	11 (10.0%)
Asian	5 (3.0%)	5 (3.4%)	4 (3.6%)
Unknown/Other	14 (8.5%)	11 (7.4%)	11 (10.0%)
<i>Continuous Variables, mean (SD)</i>			
Age, years	38.04 (14.37)	38.62 (14.42)	39.83 (13.98)
Weight, kg	91.46 (18.17)	91.22 (18.23)	89.49 (16.56)
Height, cm	167.69 (9.99)	167.88 (10.04)	167.34 (10.28)
Body Mass Index (BMI), kg/m ²	32.37 (4.83)	32.20 (4.77)	31.82 (4.17)
Weight Loss, % of PRE body weight	10.45 (1.68)	10.49 (1.59)	10.47 (1.53)
Total Energy Expenditure at START, kcal/d	2661 (547)	2651 (557)	2663 (559)

^a Included in observational analyses of Insulin-30 and body weight and body composition

^b Study completers

^c Study completers who achieved weight-loss maintenance target

Table 2. Effects of Test diets on Estimated Energy Requirement (EER) during weight-loss maintenance ^a

Diet Group	INTENTION-TO-TREAT					PER PROTOCOL				
	EER Mean 95% CI	P ^b	Diet Group Contrasts for EER			EER Mean 95% CI	P ^b	Diet Group Contrasts for EER		
			LO – HI Mean 95% CI P	LO – MOD Mean 95% CI P	MOD – HI Mean 95% CI P			LO – HI Mean 95% CI P	LO – MOD Mean 95% CI P	MOD – HI Mean 95% CI P
<i>Baseline (START) ^c</i>										
HIGH	2229 2152 to 2305	0.54	56 -50 to 161 0.30	8 -95 to 111 0.88	48 -61 to 157 0.39	2277 2175 to 2378	0.73	53 -81 to 187 0.43	21 -101 to 143 0.73	32 -107 to 172 0.65
MOD	2276 2202 to 2350					2309 2219 to 2398				
LOW	2284 2214 to 2354					2330 2247 to 2413				
<i>Diet Effect, Model 1 ^c</i>										
HIGH	2303 2170 to 2435	0.07	215 32 to 398 0.02	81 -97 to 259 0.37	134 -55 to 323 0.16	2289 2127 to 2452	0.04	276 61 to 490 0.01	118 -78 to 313 0.23	158 -66 to 382 0.16
MOD	2437 2308 to 2565					2447 2304 to 2591				
LOW	2517 2396 to 2639					2565 2432 to 2698				
<i>Diet Effect, Model 2 (Model 1 additionally adjusted for START EER) ^d</i>										
HIGH	2324 2199 to 2450	0.12	181 8 to 353 0.04	76 -92 to 243 0.37	105 -73 to 283 0.25	2308 2155 to 2460	0.06	245 43 to 446 0.02	106 -77 to 289 0.25	139 -71 to 349 0.19
MOD	2429 2308 to 2550					2447 2312 to 2581				
LOW	2505 2391 to 2620					2552 2427 to 2677				
<i>Diet Effect, Model 3 (Model 2 excluding participant with hypothyroidism) ^{d, e}</i>										
HIGH	2323 2200 to 2447	0.07	204 33 to 376 0.02	96 -70 to 263 0.25	108 -68 to 284 0.23	2309 2160 to 2458	0.03	272 74 to 471 0.008	134 -47 to 314 0.14	139 -67 to 344 0.18
MOD	2432 2312 to 2551					2448 2316 to 2579				
LOW	2528 2414 to 2642					2582 2458 to 2706				

Diet Effect, Model 4 (Model 3 without adjustment for the polytomous cohort variable) ^f

HIGH	2288					2271				
	2156 to 2419					2120 to 2422				
MOD	2460	0.03	246	73	173	2467	0.008	323	127	196
	2333 to 2587		64 to 427	-104 to 250	-12 to 357	2331 to 2602		122 to 525	-60 to 314	-9 to 402
LOW	2533					2594				
	2411 to 2656					2465 to 2723				

^a Data calculated per kg and normalized to average weight of 82 kg at the START (post-weight loss, pre-randomization)

^b Overall diet group effect

^c Covariates included cohort, sex, age, Run-in weight loss (% PRE body weight), START TEE, and START body weight

^d Covariates included cohort, sex, age, Run-in weight loss (% PRE body weight), START TEE, START body weight, and START EER

^e As described in methods, 1 participant developed hypothyroidism and was excluded *a priori* basis from analyses of the primary outcome (7, 9)

^f Covariates included sex, age, Run-in weight loss (% PRE body weight), START TEE, START body weight, and START EER (Elimination of the polytomous cohort variable decreased predictor df by 10 in ITT and 9 in PP; participants in cohort 2, wave D were not included in PP.)

Table 3. Sensitivity analysis of Estimated Energy Requirement (EER).^a

Diet Group	EER Mean 95% CI	P ^b	Diet Group Contrasts for EER		
			LO – HI Mean 95% CI P	LO – MOD Mean 95% CI P	MOD – HI Mean 95% CI P
Adjusted for change in body composition by DXA ^c					
HIGH	2304 2145 to 2462	0.04	268 58 to 478 0.01	119 -71 to 310 0.22	149 -70 to 367 0.18
MOD	2452 2313 to 2592				
LOW	2572 2442 to 2702				
Adjusted for change in body composition by isotope dilution ^c					
HIGH	2208 2027 to 2388	0.08	273 32 to 513 0.03	87 -131 to 305 0.43	186 -63 to 435 0.14
MOD	2394 2234 to 2553				
LOW	2481 2330 to 2631				
Accounting for possible dietary non-adherence ^d					
HIGH	2347 2198 to 2495	0.02	285 76 to 493 0.008	262 37 to 486 0.02	23 -208 to 253 0.84
MOD	2369 2208 to 2531				
LOW	2631 2488 to 2775				
As above, with additional elimination of participants lacking non-adherence data ^c					
HIGH	2345 2190 to 2499	0.02	292 84 to 501 0.007	181 -47 to 409 0.12	111 -140 to 362 0.38
MOD	2456 2278 to 2634				
LOW	2637 2501 to 2773				

-
- ^a Calculations performed on Model 2 (Table 2) to examine how changes in body composition and potential non-adherence could influence the diet effect on EER in the Per Protocol group. Data calculated per kg and normalized to average weight of 82 kg at START (post-weight loss, pre-randomization)..
 - ^b Overall diet group effect
 - ^c See Methods for details
 - ^d Excluding 45 individuals with EER-to-TEE ratio in the top quintile (i.e., individuals most likely to have under-consumed provided foods) and in the bottom quintile (i.e., individuals most likely to have consumed foods off protocol)
 - ^e Excluding an additional 9 participants in cohort 1 for whom data on unconsumed energy were missing
-

FIGURE LEGENDS

Figure 1. Variability in estimated energy requirement (EER) and total energy expenditure (TEE). The correlation between the baseline (START) and outcome measurements adjusted for diet was substantially lower for EER (Panel A) compared to TEE (Panel B), providing rationale for using ANCOVA rather than change models for EER.

Figure 2. Associations of Insulin-30 with body weight and change in change in body fatness. Individuals with high Insulin-30 prior to weight loss have higher body weight in a cross-sectional analysis (Panel A) and a more adverse response to weight loss (proportionately less fat loss) in a prospective analysis (Panel B).

Figure 1

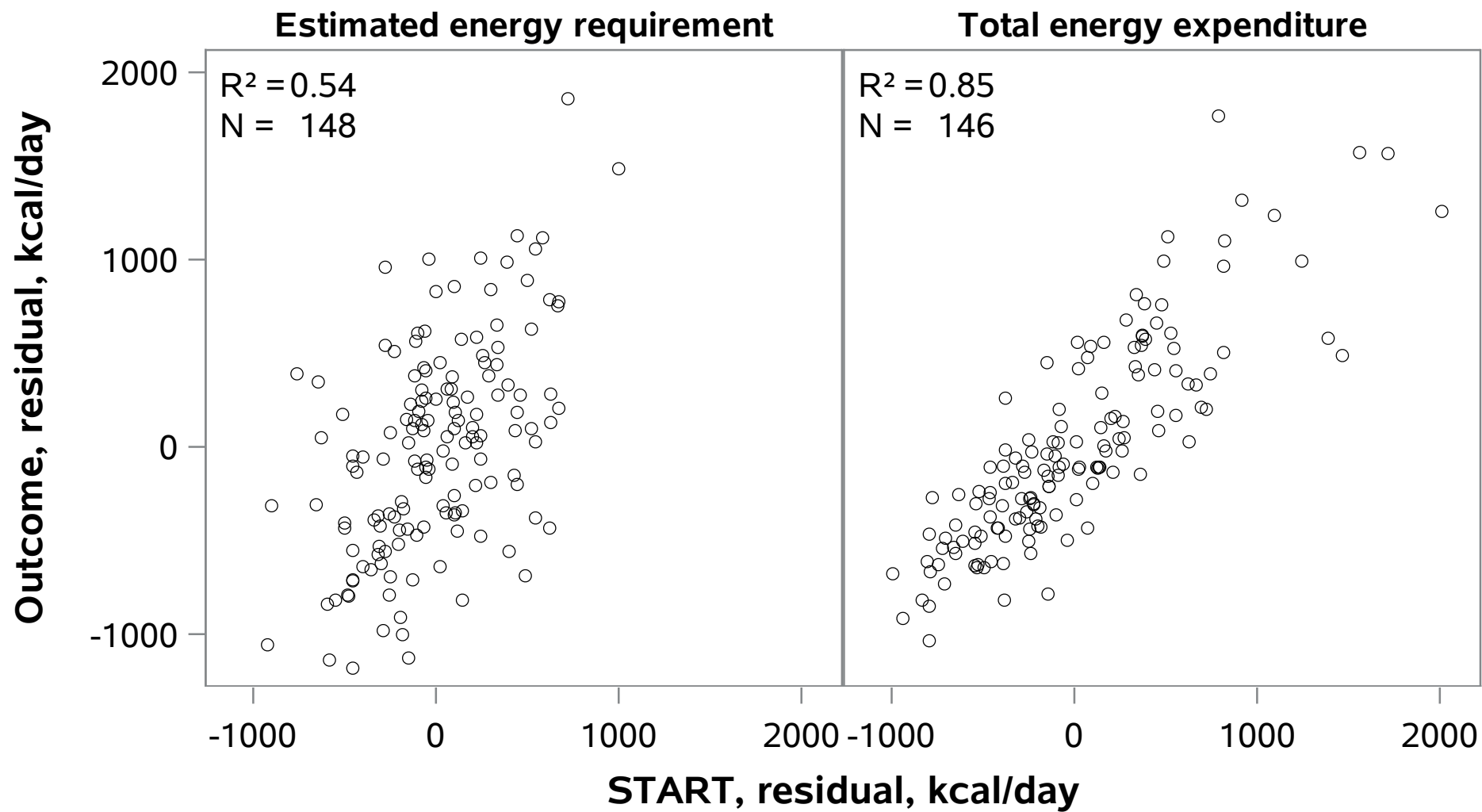
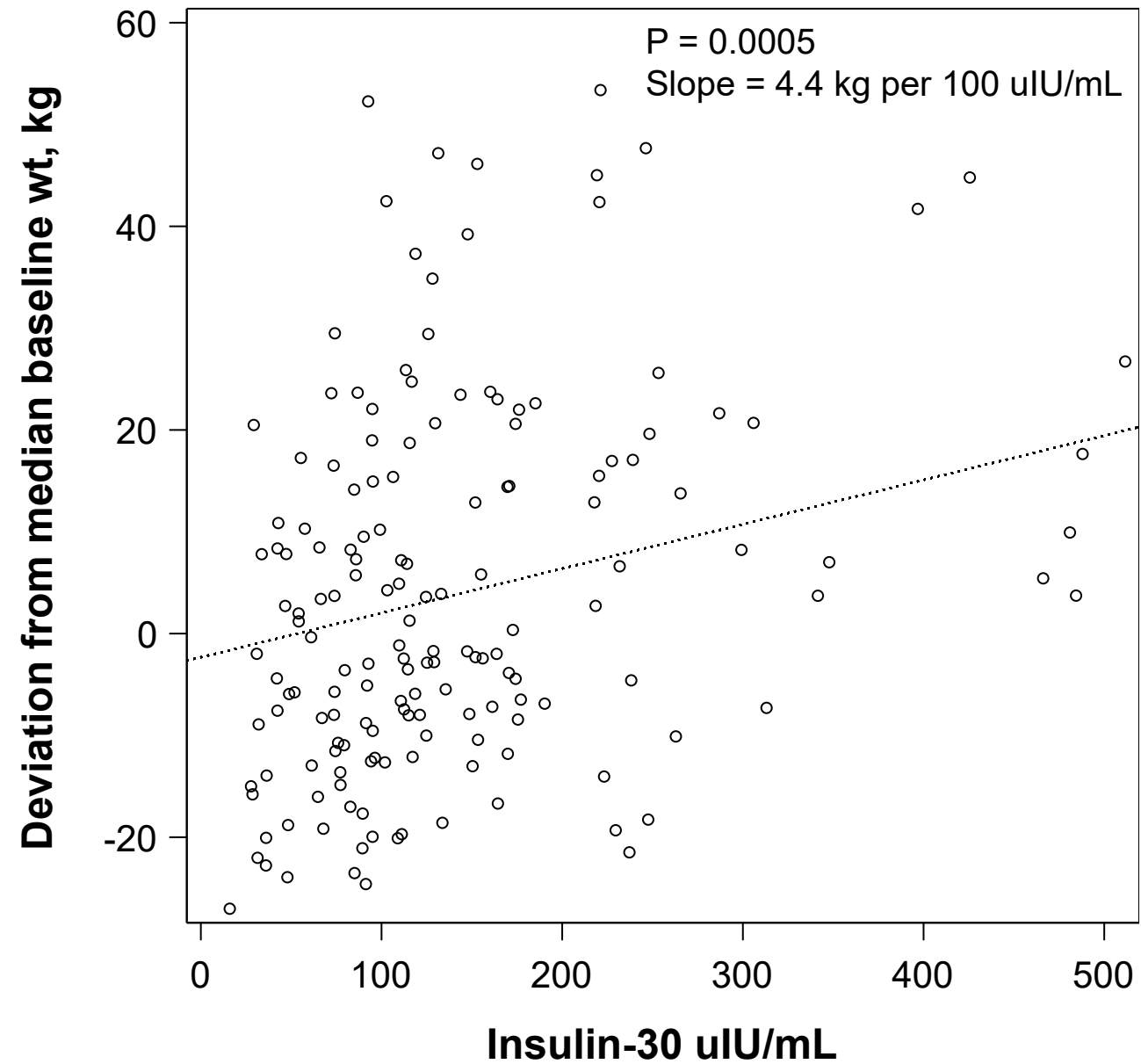
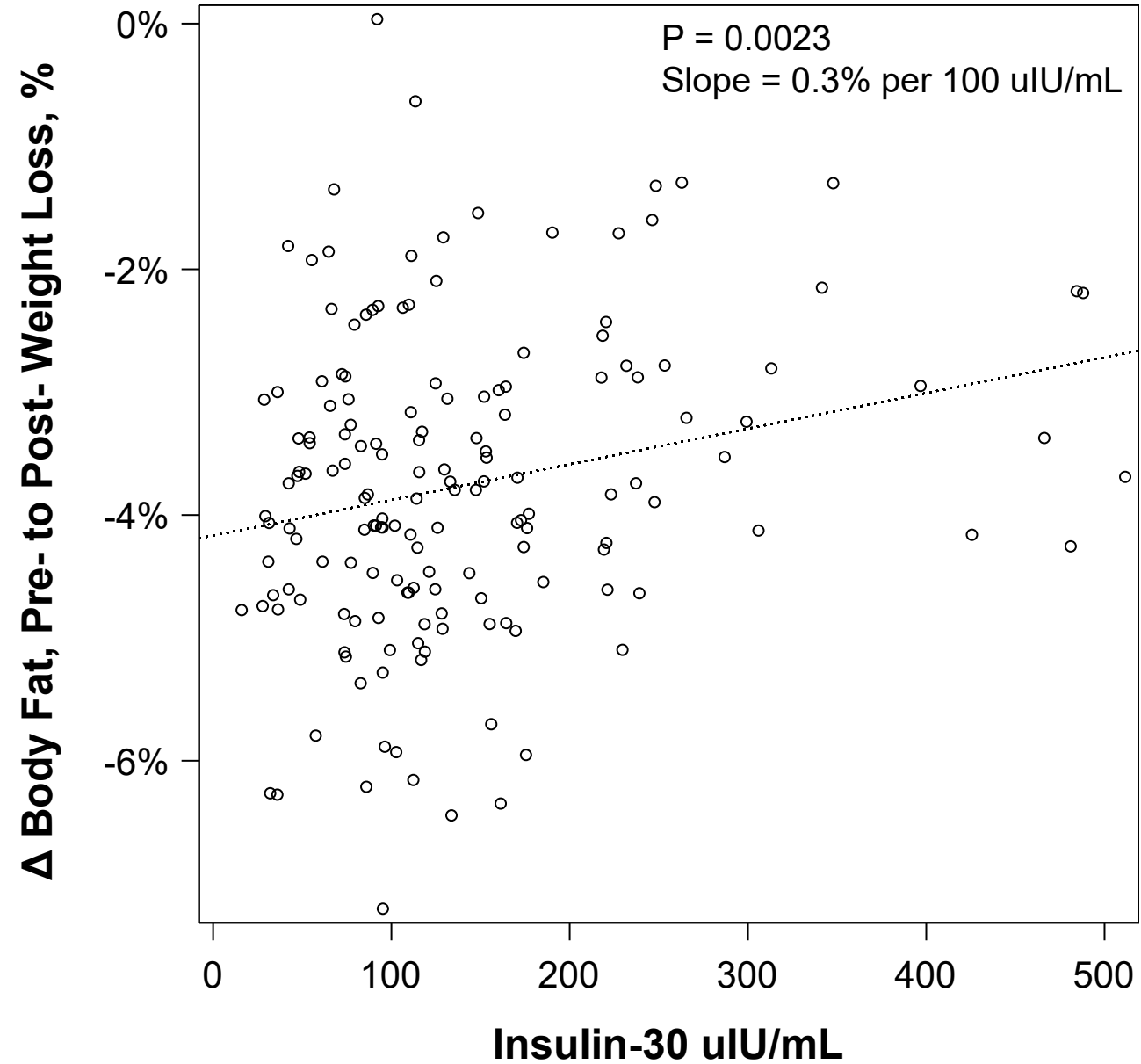


Figure 2

Panel A



Panel B



Supplementary Online Content

Ebbeling CB, Bielak L, Lakin PR, Klein GL, Wong JMW, Luoto PK, Wong WW, Ludwig, DS. Higher energy requirement during weight loss maintenance on a low- versus high-carbohydrate diet: secondary analyses from a randomized controlled feeding study

TABLE OF CONTENTS

Supplemental Table 1. Changes in body composition by DXA and isotope dilution throughout the study

Supplemental Figure 1. Distribution of Estimated Energy Requirement (EER) in the Intention-to-Treat and Per Protocol analyses.

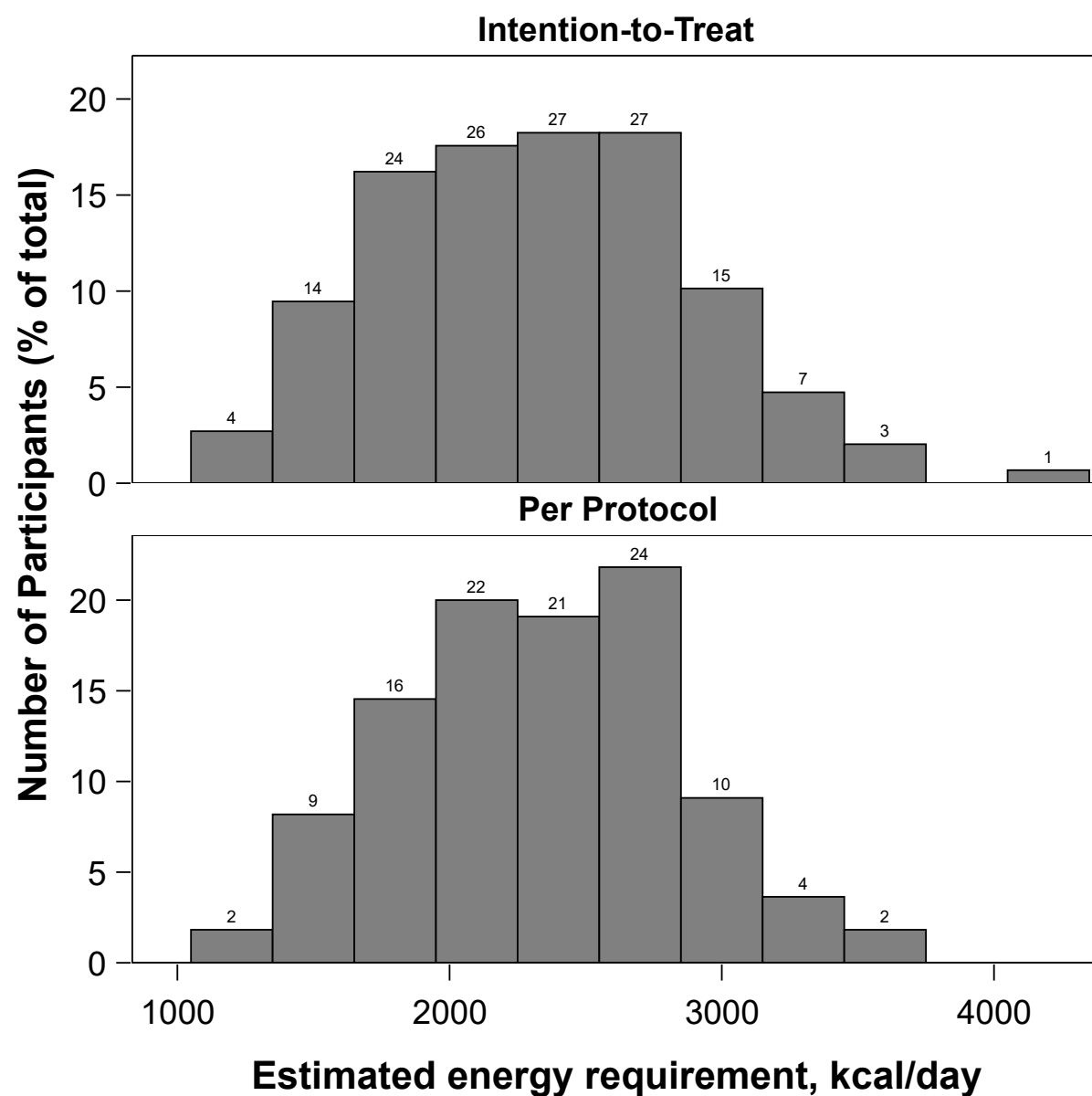
Supplemental Figure 2. Ratio of Estimated Energy Intake (EER)-to-total energy expenditure as a measure of non-adherence.

Supplemental Table 1. Changes in body composition by DXA and isotope dilution throughout the study. No significant diet effects were observed during the Test phase. Change in percentage fat by DXA was assessed as a difference, END – START. Change in percentage body fat by isotope dilution was assessed as a difference, average (MID, END) – START. Statistical models were minimally adjusted for cohort; adjustment for other baseline covariates did not materially affect the results.

Intention-to-treat							
Diet Group	N	Timepoint				Overall P	LO – HI 95% CI P
		PRE	START	MID	END		
Percentage Body Fat from DXA							
HIGH	46	41.58	37.87	–	37.36	0.72	0.24
MOD	48	40.88	37.00	–	36.70		-0.35 to 0.84
LOW	54	39.77	35.96	–	35.71		0.42
Percentage Body Fat from isotope dilution							
HIGH	46	42.15	37.75	36.82	36.92	0.76	-0.30
MOD	48	41.19	37.49	36.77	37.03		-1.5 to 0.95
LOW	54	39.56	36.05	34.93	35.98		0.64

Per protocol							
Diet Group	N	Timepoint				Overall P	LO – HI 95% CI P
		PRE	START	MID	END		
Percentage Body Fat from DXA							
HIGH	31	42.23	38.53	–	38.35	0.97	-0.048
MOD	37	40.26	36.43	–	36.30		-0.58 to 0.48
LOW	42	39.74	35.93	–	35.71		0.86
Percentage Body Fat from isotope dilution							
HIGH	31	42.28	37.93	37.55	38.23	0.94	-0.62
MOD	37	40.91	36.54	36.17	36.71		-2.1 to 0.89
LOW	42	39.00	35.85	34.95	35.79		0.42

Supplemental Figure 1. Distribution of estimated energy requirement (EER) in the Intention-to-Treat and Per Protocol analyses.



Supplemental Figure 2. Ratio of estimated energy requirement (EER)-to-total energy expenditure (TEE) as a measure of non-adherence. Differences by diet group were not significant, suggesting no systematic bias. EER as a proportion of TEE in HIGH, MOD and LOW were, respectively: 0.88, 0.91, and 0.85 in the Intention-to-treat; and 0.88, 0.89 and 0.87 in the Per Protocol analyses. Symbols: diamonds, mean; horizontal lines, median; grey shaded area, interquartile range (25th to 75th percentile); bars, range (minimum to maximum).

