

Alterations in Gut Archaea Composition and Their Bacterial Interactions Linked to Hypertension

Wen Yuan^{1#}, Yihang Chen^{2#}, Lirong Liang^{3#}, Luyun Fan^{4#}, Hongjie Chi^{2#}, Xiucheng Wang⁵, Jing Li²,
Xun Zhang⁶, Lin Feng³, Ying Dong², Pixiong Su^{2,7}, Jiuchang Zhong^{2*}, Jun Cai^{8*}, Xiaoyan Liu^{1,2*}

1. Medical Research Center, Beijing Institute of Respiratory Medicine and Beijing Chao-Yang Hospital, Capital Medical University, 100020 Beijing, China
2. Heart Center and Beijing Key Laboratory of Hypertension, Beijing Chao-Yang Hospital, Capital Medical University, 100020 Beijing, China
3. Department of Clinical Epidemiology, Beijing Institute of Respiratory Medicine and Beijing Chao-Yang Hospital, Capital Medical University, 100020 Beijing, China
4. State Key Laboratory of Cardiovascular Disease, Fuwai Hospital, National Center for Cardiovascular Disease, Peking Union Medical College, Chinese Academy of Medical Sciences, 100032 Beijing, China
5. Institute of Resource Planning, Chinese Academy of Agricultural Sciences, 100081 Beijing, China
6. Institute of Microbiology, Chinese Academy of Sciences, Beijing 100101, China;
7. Department of Cardiac Surgery, Beijing Chaoyang Hospital, Capital Medical University, 100020 Beijing, China
8. Department of Hypertension, Beijing Anzhen Hospital, Capital Medical University, Beijing, 100069, China

#These authors contributed equally to this work.

*Corresponding authors: Xiaoyan Liu, lxycyy@mail.ccmu.edu.cn; Jun Cai, caijun7879@126.com; Jiuchang Zhong, jiuchangzhong@aliyun.com

Abstract

Alterations in the gut microbiota have been linked to hypertension, with the role of archaea, despite being stable constituents, remaining largely unexplored. Shotgun metagenomic analyses of fecal samples were performed on 341 participants from 3 cohorts: discovery cohort (88 individuals), validation cohort 1 (175 individuals), and validation cohort 2 (78 individuals). Principal Coordinates Analysis (PCoA) based on Bray-Curtis distances revealed significant alterations in the composition of enteric archaea between control individuals and hypertensive patients ($P < 0.05$). Hypertensive groups showed reduced abundances of halophilic archaea (*Halorhabdus*, *Halovivax*, and *Halorubrum_lipolyticum*) and methanogenic archaea (*Methanomassiliicoccus* and *Candidatus_Methanomassiliicoccus_intestinalis*). Eleven archaea species, depleted in fecal samples from hypertensive patients, distinguished them from control individuals, with areas under the receiver operating characteristic curve of 0.85, 0.79, and 0.91 in the discovery, validation cohort 1, and validation cohort 2, respectively. Significant correlations were observed between these archaea and clinical data across cohorts. Additionally, a significant positive correlation in richness between gut bacteria and archaea suggests a close cross-kingdom synergy within the microbiome. This study highlights significant shifts in the archaeal populations of hypertensive patients, underscoring the potential of archaeal biomarkers in hypertension diagnosis and suggesting avenues for future therapeutic research.

Key Words: gut microbiota, gut archaea, hypertension, metagenomics

Introduction

Hypertension remains a leading global health challenge, associated with increased risks of cardiovascular disease, stroke, and mortality [1]. The interplay between genetic predispositions, lifestyle factors, and environmental influences is well-acknowledged in the development and

progression of hypertension [2]. Among these, the role of the gut microbiome, the vast ecosystem of microorganisms residing in the human gastrointestinal tract, has recently gained attention for its potential influence on systemic blood pressure regulation and, by extension, hypertension [3-6].

The gut microbiome, consisting of bacteria, archaea, viruses, and fungi, is known to be intimately linked with the host's metabolism, immune function, and overall health [7-8]. Archaea constitute a distinct and diverse group of microorganisms on Earth, forming one of the three principal domains of life, alongside Bacteria and Eukaryotes [9]. While the bacterial components of the microbiome have been extensively studied for their contributions to health and disease, the archaeal component—often overlooked—holds intriguing prospects for understanding hypertension's complexities.

Recent research underscores the significant link between gut archaea and human health and diseases [10]. Kim *et al.* identified a rich presence of halophilic archaea within the gut archaeal community of Koreans [11]. Barnett *et al.* presented findings suggesting an inverse association between the gut archaeon *Methanobrevibacter smithii* (MSS) and asthma risk in children; a higher relative abundance of MSS correlates with a reduced asthma risk, revealing a linear relationship [12]. Coker and colleagues found that in patients with colorectal cancer (CRC), there is an enrichment of halophilic archaea and a reduction in methanogenic archaea, with the halophilic archaea *Natrinema sp. J7-2* progressively increasing through the stages from healthy to adenoma to CRC [13]. However, the relationship between gut archaea and hypertension remains unclear.

The present study aims to elucidate the composition and functional dynamics of enteric archaea in individuals with and without hypertension, exploring potential shifts in archaeal populations that may be associated with the condition. By examining three separate cohorts comprising a total of

341 participants from diverse geographic regions and utilizing meticulous metagenomic sequencing and analysis methodologies, we seek to identify specific archaeal species and their interactions with gut bacteria that could contribute to the pathogenesis of hypertension. Furthermore, we investigated the potential of utilizing changes in the gut archaeal community as diagnostic markers for hypertension, offering new insights into the gut microbiome's role in hypertension.

Methods

Study Cohorts

This study comprises three distinct cohorts: The first cohort involves individuals from Dalian, China, encompassing both hypertensive patients and healthy controls, with their fecal metagenomic sequencing data sourced from the European Nucleotide Archive (ENA) under the identifier PRJEB21612, acting as the Discovery cohort [5]. The second cohort is drawn from our prior study in Tangshan, including hypertensive, pre-hypertensive and healthy individuals, whose data was likewise retrieved from the ENA, marked by the identifier PRJEB13870 [3]. The third cohort is an in-house group from Fuwai Hospital, consisting of 39 hypertension patients and 39 healthy controls, which were enrolled between October 2021 and February 2022.

Within the three cohorts, healthy controls are defined by systolic blood pressure (SBP) \leq 120 mmHg, and diastolic blood pressure (DBP) \leq 80 mmHg in subjects not receiving antihypertensive treatments. Hypertension (HTN) is diagnosed in patients with SBP \geq 140 mmHg, or DBP \geq 90 mmHg, in the absence of antihypertensive treatments. In validation cohort 1, pHTN is identified in individuals with $125 \text{ mmHg} \leq \text{SBP} \leq 139 \text{ mmHg}$, or $80 \text{ mmHg} \leq \text{DBP} \leq 89 \text{ mmHg}$, who are not on antihypertensive medication. Subjects were excluded for any of the following reasons: current

cancer, renal failure, heart failure, stroke, peripheral artery disease, symptoms of respiratory infections or digestive tract diseases, or treatment with antibiotics within the two months prior to sampling. Additionally, individuals with a history of hypertension or significant cardiovascular conditions, such as coronary artery disease or stroke, within the last five years were not included in the healthy control group.

Prior to data and biospecimen collection, written informed consent was secured from each subject. Patients were recruited at the juncture of their initial diagnosis, with no prior treatment, to preserve the authenticity of fecal sample collection. Ethical approval for the study was granted by the Ethics Committees of the Beijing Chao-Yang Hospital of Capital Medical University (approval No. 2024-ke-726) and Fuwai Hospital (approval No. 2020-1334), ensuring adherence to ethical guidelines.

Metagenomics Sequencing

Total DNA was extracted from all samples of validation cohort 2 using the cetyltrimethylammonium bromide (CTAB) method and subsequently sequenced by Oriental Yeekang (Beijing, China) Medicine Technology Co., Ltd. on the Illumina Novaseq 6000 platform, generating 2×150-bp paired-end reads [14]. The quality of the extracted DNA was assessed using NanoDrop, Qubit 2.0, and agarose gel electrophoresis (AGE) . The raw sequencing data obtained were utilized for subsequent bioinformatic analyses.

Sequence Taxonomic Annotation

Metagenomic sequencing datasets obtained from ENA public database and in-house metagenomic sequencing data were quality filtered by using trimmomatic v_0.33 software to remove low quality sequences [15]. Human sequences were removed after alignment with a reference genome

(hg38 database) using Bowtie2 v_2.2.4, with default settings [16]. The species identification of archaea and bacteria was conducted using the MetaPhlAn3 software (version 3.0.13), aligning the data with the species marker gene database MetaPhlAn_v3.0_CHOCOPhAn_201901 using Bowtie2 for alignment [17]. This process enables the acquisition of relative abundance of species across various taxonomic levels (kingdom, phylum, class, order, family, genus, species). MetaPhlAn3 relies on unique clade-specific markers identified from about 17,000 reference genomes from bacterial, archaeal, viral, and eukaryotic microorganisms for microbial profiling and quantification.

Sample Filtering

To ensure consistency and data quality, samples were subjected to strict filtering before analysis. Samples that were abnormal, such as the length of reads uploaded in the metagenomic dataset does not align with the length of quality values, were first discarded. Outliers were also removed, including samples with high archaea content (archaeal read counts more than 1% of the total), low archaea content (archaeal read counts less than 0.01% of the total) [18]. Moreover, samples with low archaeal sequencing depth were discarded (archaea read counts less than 10,000). Consequently, a total of 172 patients with HTN, 53 patients with pHTN, and 119 healthy individuals were retained across the three cohorts.

Statistical Analysis

The Mann-Whitney U test identified differentially abundant archaea between HTN and CON samples in the discovery and validation cohort 2, while the Kruskal-Wallis test assessed differences across control, pHTN, and HTN individuals in validation cohort 1. Gut archaeal alpha diversity was analyzed through the Shannon index (for evenness and richness) and the Chao1

index (for richness). Beta diversity was explored using Principal Coordinate Analysis (PCoA) on Bray-Curtis distances of archaeal species abundances with the vegan R package. Spearman's analysis correlated CON-enriched archaeal species with clinical metadata across cohorts. Receiver operating characteristic curves (AUCs) were generated via logistic regression. Co-occurrence patterns between archaeal and bacterial communities were investigated using the SparCC algorithm and the ipgraph R package. Data analysis utilized R (v4.2.2) and GraphPad Prism (v9.0), with p-values < 0.05 deemed significant, presented as means \pm S.E.M.

Results

Population Characteristics Across Three Cohorts

In this study, the metagenomic sequencing data for the discovery cohort and Validation Cohort 1 were downloaded from the ENA database [3, 5]. Additionally, an internal fecal metagenomic dataset was utilized as an additional Validation Cohort 2. Within these metagenomic sequencing datasets, the relative abundance of archaea ranged between 0.04% and 0.6%. To ensure data quality, a series of stringent filtering criteria were applied to remove contaminated samples and those with low archaeal content (Figure 1A). This included the exclusion of samples with missing/incomplete data, unusually high archaeal abundance (relative abundance greater than 1%, suspected contamination), or exceptionally low abundance (relative abundance less than 0.01%), as well as samples with low archaea sequencing depth.

After filtering, the discovery cohort retained 88 samples, including 42 from the healthy control group and 46 from the hypertension (HTN) group. Validation Cohort 1 retained 175 samples, comprising 35 from the control group, 53 from the pre-hypertension (pHTN) group, and 87 from the HTN group. Validation Cohort 2 included 39 samples from the CON group and 39 samples

from the HTN group (Figure 1A). The clinical information of the cohorts after filtering are presented in Table 1. In the discovery cohort, there were no differences in age, gender, or BMI between the control and HTN groups. In Validation Cohort 1, there were no differences in age, gender, or BMI among the control, pHTN, and HTN groups. In Validation Cohort 2, the HTN group had a higher proportion of males and higher BMI compared to the healthy control group.

Archaeal Composition in the Gut of Healthy and Hypertensive Individuals

To ensure that the sequencing depth across the three cohorts was sufficient for archaeal analysis, we initially conducted rarefaction curve analyses. The results indicated that the archaeal richness in samples from all three cohorts reached a plateau at lower read counts (Figure 1 B-D), suggesting that the depth of sequencing data was adequate.

Subsequently, we analyzed the composition of gut archaea across the three cohorts. We first examined the composition of archaea at the phylum level. *Euryarchaeota* was the most prevalent archaeal phylum across all cohorts, accounting for more than 90% of the archaeal community in the majority of samples, regardless of whether they were from healthy individuals or those with hypertension (Figure 2 A, C, E). This finding aligns with previous reports [13]. At the genus level, *Haloquadratum* and *Haloferax* were the most dominant genera in the discovery cohort, while *Thermococcus*, *Haloquadratum*, *Halorubrum*, and *Haloferax* constituted the majority in both validation cohorts (Figure S1 A-C). In the discovery cohort, the archaeal species with the highest relative abundances were *Haloquadratum walsbyi*, *Natrialba taiwanensis*, *Haloferax prahovense*, *Haloferax denitrificans*, and *Methanobrevibacter smithii* (Figure 2B). In Validation Cohorts 1 and 2, *Haloferax prahovense*, *Haloferax denitrificans*, and *Haloquadratum walsbyi* were among the species with higher relative abundances (Figure 2D, F). The high relative abundance of these

halophilic and methanogenic archaeal species suggests they play significant biological roles within this microbial community, closely linked to human health.

Shifts in Gut Archaea Composition Associated with Hypertension

To explore whether there are compositional changes in the gut archaea of individuals with hypertension, we initially compared the archaeal diversity between hypertensive individuals and healthy controls within the discovery cohort. The results revealed no significant difference in species richness within the archaeal community α -diversity between the two groups (Figure 3A). However, the Shannon diversity index was significantly lower in the hypertension (HTN) group compared to the control (CON) group (Figure 3B). In contrast, no significant differences in species richness or community diversity were observed between the CON and HTN groups in Validation Cohorts 1 and 2 (Figure 3C-F). Moreover, there was no significant difference in α -diversity of the archaeal community between individuals with pre-hypertension (pHTN) and other groups within Validation Cohort 1 (Figure S2A-B). Subsequent analysis using Principal Coordinates Analysis (PCoA) based on Bray-Curtis distances examined β -diversity between the CON and HTN groups in the discovery cohort, showing a clear clustering difference (Permutational Multivariate Analysis of Variance, $p < 0.05$) (Figure 3G). Similar significant differences in β -diversity were also observed between the CON and HTN groups in both Validation Cohorts 1 and 2 (Permutational Multivariate Analysis of Variance, $p = 0.047$ for Validation Cohort 1, $p < 0.001$ for Validation Cohort 2) (Figure 3H, I). Additionally, in Validation Cohort 1, the composition of the archaeal community was different between the healthy control group and the pre-hypertensive group (Permutational Multivariate Analysis of Variance, $p = 0.067$), as well as between the pre-hypertensive group and the hypertensive group (Permutational

Multivariate Analysis of Variance, $p=0.047$) (Figure S2C-D), indicating changes in the gut archaea composition begin in the pHTN phase.

In the discovery cohort, we identified three genera of archaea that were reduced in patients with HTN: the halophilic archaea *Halorhabdus* and *Halovivax*, and the methanogenic archaea *Methanomassiliicoccus* (Figure 3J). This trend was also observed between the CON and HTN groups in Validation Cohorts 1 and 2 (Figure 3K, L). However, in Validation Cohort 1, there were no significant differences in the levels of *Halorhabdus* and *Halovivax* between the CON and pHTN groups (Figure S2E-F), while *Methanomassiliicoccus* showed a decreasing trend in pHTN patients (Figure S2G). These results suggest significant differences in the archaeal structure of the HTN population compared to healthy individuals, with reductions in methanogenic and halophilic archaea closely associated with the development and progression of hypertension.

Utilizing Gut Archaea Species as Diagnostic Markers for Hypertension

In the discovery cohort, we identified 16 archaeal species whose abundances differed between hypertensive patients and control individuals, with 5 species being enriched and 11 reduced in hypertensive patients (Figure 4A). The enriched species included two halophilic archaea, *Candidatus Haloredivivus sp. G17* and *Haloplanus vescus*, and two methanogenic archaea, *Methanomassiliicoccales archaeon RumEn M2* and *Methanosaeta harundinacea*. The 11 species that were found to be reduced in hypertensive patients include halophilic archaea such as *Halogramum salarium*, *Halorubrum lipolyticum*, *Halorhabdus utahensis*, *Halorubrum sp. AJ67*, and *Halovivax asiaticus*, and methanogenic archaea such as *Methanobrevibacter filiformis*, *Methanobrevibacter sp. AbM4*, and *Candidatus Methanomassiliicoccus intestinalis* (Figure 4A). Subsequently, we found that *Candidatus Methanomassiliicoccus intestinalis* and *Halorubrum*

lipolyticum were significantly reduced in the HTN group across all three cohorts (Figure 4B-C). In Validation Cohort 1, a significant reduction trend in the pHTN group was also observed for *Candidatus Methanomassiliicoccus intestinalis* and *Halorubrum lipolyticum* (Figure S3A-B).

Next, we evaluated the diagnostic potential of these archaeal species that were reduced in hypertensive patients. Our results demonstrated that the 11 archaeal species biomarkers reduced in hypertensive patients could differentiate between hypertensive patients and control individuals in the discovery cohort. Receiver Operating Characteristic (ROC) curves were plotted, and the Area Under the Curve (AUC) was calculated to assess the predictive value of these archaeal biomarkers for hypertension, resulting in an AUC of 0.85 (Figure 4D). In Validation Cohort 1, this set of biomarkers similarly distinguished between 35 control individuals and 53 pHTN individuals with a diagnostic efficacy of AUC=0.73 (Figure S3C), and between 35 healthy individuals and 87 HTN individuals with an AUC=0.69 (Figure 4E). In Validation Cohort 2, the same set of biomarkers differentiated between 39 control individuals and 39 HTN individuals with a diagnostic efficacy of AUC=0.91 (Figure 4F). These results suggest the potential value of fecal archaeal DNA in diagnosing hypertension.

Furthermore, we conducted Spearman correlation analyses between these archaeal markers and clinical data of the cohort populations. The results showed that in the discovery cohort, all 11 archaeal markers were negatively correlated with SBP or SDP, while *Candidatus Methanomassiliicoccus intestinalis* was significantly positively correlated with serum HDL levels (Figure 4G). In Validation Cohort 1, *Halorubrum lipolyticum*, *Halogranum salarium*, and *Candidatus Methanomassiliicoccus intestinalis* still showed significant negative correlations with DBP (Figure 4H). In Validation Cohort 2, *Halorubrum lipolyticum* and *Candidatus*

Methanomassiliicoccus intestinalis were also significantly negatively correlated with both SBP and DBP (Figure 4I). These results further validate the close association between archaea and the development of hypertension.

Cross-Kingdom Synergy Between Gut Bacteria and Archaea in Hypertension

The interplay and connections between cross-kingdom species within the gut microbiome are closely linked to diseases [13]. Considering the potential synergistic interactions between gut bacteria and archaea, we analyzed the diversity between these two microbial kingdoms. The results indicated a significant positive correlation in richness between bacteria and archaea, both in the control (CON) group and the hypertension (HTN) group (Figure 5A-B). Analyses in Validation Cohorts 1 and 2 further confirmed this observation (Figure 5C-F), suggesting a close cross-kingdom synergy between gut bacteria and archaea.

Interactions Between Gut Archaea and Bacteria in Hypertension Development

We further explored the correlations between archaeal and bacterial species through SparCC analysis and presented the results in network diagrams. Given that the genera *Halorhabdus*, *Halovivax*, *Methanomassiliicoccus*, and the archaeal species *Candidatus Methanomassiliicoccus intestinalis* and *Halorubrum lipolyticum* were enriched in the control groups across all three cohorts, we analyzed their correlations with different bacterial genera and species in both control and hypertension (HTN) groups (Figure 6). Interestingly, we found that the number of correlation nodes between these archaeal genera or species and bacteria significantly increased in the HTN group across all three cohorts. This suggests that gut archaea might participate in the development of hypertension through their interactions with bacteria.

Specifically, *Lachnoclostridium* showed a consistent negative correlation with *Halorhabdus* across

all cohorts, suggesting it may be involved in the mechanism by which *Halorhabdus* influences blood pressure. The bacterial genus *Erysipelatoclostridium* was negatively correlated with either *Halorhabdus* or *Methanomassiliicoccus* in all populations across the three cohorts, indicating that *Halorhabdus* or *Methanomassiliicoccus* might affect the progression of hypertension by suppressing the levels of *Erysipelatoclostridium*. Additionally, the bacterial genus *Gemmiger* showed a consistent positive correlation with either *Halorhabdus* or *Halovivax*, implying a potential protective role (Figure 6).

At the species level, in the control populations, the differential bacterium *Eubacterium eligens* showed a consistent negative correlation with either *Candidatus Methanomassiliicoccus intestinalis* or *Halorubrum lipolyticum* across all three cohorts. *Oscillibacter sp. 57_20* consistently showed a positive correlation with either *Candidatus Methanomassiliicoccus intestinalis* or *Halorubrum lipolyticum* across all cohorts, suggesting that gut archaea might be involved in the pathogenesis of hypertension through their effects on *Eubacterium eligens* and *Oscillibacter sp. 57_20* (Figure S4).

Discussion

The present study uncovered notable shifts in the gut archaeal populations of hypertensive individuals compared to healthy controls, particularly highlighting the differential abundance of halophilic and methanogenic archaea. These findings suggest a link between changes in gut archaea and hypertension, underscoring the potential of archaeal species as non-invasive biomarkers for diagnosing hypertension. Through examining the complex interactions between gut archaea and bacteria, our research opens a new avenue for understanding and potentially managing hypertension, emphasizing the critical role of archaea in hypertension.

Archaea are indispensable members of the human gut microbiota [19-21]. Many archaea thrive in extreme ecosystems, being adapted to acidic, alkaline, saline, or thermophilic conditions [22]. However, some archaeal species can inhabit temperate and neutral environments, such as those found in the human gut, skin, nose, lungs, oral cavity, and vagina [23-24]. Due to the uncultivability of most archaeal species, current knowledge regarding the composition and function of gut archaea is limited. With the rapid advancement of high-throughput sequencing technologies, analyzing the archaeal community in the gut using next-generation sequencing has become feasible [10, 13, 25-26].

Our findings indicate that the abundance of archaea in the gut accounts for approximately 0.04%-0.6% of the total species abundance, consistent with previous reports [13]. Our analysis reveals significant variability in the abundance of specific archaeal species between hypertensive individuals and healthy controls, underscoring the potential role of these microbes in blood pressure regulation or in reflecting physiological alterations related to hypertension. The identification of differentially abundant halophilic and methanogenic archaea between these groups corroborates earlier studies linking these archaeal families to health and disease [13], suggesting a potential mechanism through which these microbes could affect hypertension.

Specifically, in three cohorts, the abundance of halophilic archaea genera *Halorhabdus* and *Halovivax*, as well as the halophilic archaeal species *Halorubrum lipolyticum*, was significantly reduced in the hypertensive group. Current knowledge about the functions of these halophilic archaea is limited. *Halorhabdus utahensis*, a member of the *Halorhabdus* genus, can metabolize and produce carotenoids, which have antioxidant properties [27]. *Halorhabdus rudnickae* has been shown to activate human dendritic cells and orient T helper cell responses [28]. Additionally,

metabolites secreted by *Halorhabdus rudnickae* exhibit significant toxic effects on ovarian cancer cells, suggesting that it plays a protective role as an archaeon [29]. The role and mechanisms of these halophilic archaea in hypertension require further investigation.

In all three cohorts studied, we observed a reduced abundance of the methanogenic archaea genus *Methanomassiliicoccus* and its species *Candidatus Methanomassiliicoccus intestinalis* in patients with hypertension, suggesting a potential role of methane in the development and progression of hypertension. Methane, an important intestinal gas produced by methanogenic archaea metabolism, has anti-inflammatory properties and may be linked to the pathophysiological processes of hypertension [30-32]. Additionally, both *Methanomassiliicoccus intestinalis* and *Methanomassiliicoccus* belong to the *Methanomassiliicoccales*, an order of archaea that can utilize trimethylamine (TMA) [33]. TMA is a compound generated by the gut microbiota from the metabolism of specific nutrients such as choline, phosphatidylcholine, and L-carnitine, and is oxidized in the liver to form trimethylamine N-oxide (TMAO). Studies have found that TMAO may contribute to increased vascular tension and blood pressure by reducing the production of nitric oxide (NO) and directly affecting vascular smooth muscle cells [34-35]. In this context, archaea that utilize TMA may play a role in the development of hypertension by metabolizing TMA and thereby reducing TMAO levels. However, the specific role and significance of gut methanogenic archaea in hypertension require further investigation to be fully understood.

Moreover, the diagnostic potential of archaeal biomarkers for hypertension, as evidenced by the predictive power of certain archaeal species, opens new avenues for non-invasive screening methods. These findings highlight the microbiome's potential in early disease detection and management, offering a novel approach to hypertension diagnosis beyond traditional risk factors

and indicators.

The significant positive correlation in richness between bacteria and archaea across both hypertensive and control groups underscores the symbiotic relationship within the gut microbiome. This synergy suggests a balanced microbial ecosystem is crucial for maintaining health, with disturbances potentially contributing to disease pathogenesis, including hypertension. The increase in correlation nodes between specific archaeal genera or species and bacteria in hypertensive patients further supports this notion, indicating a disrupted microbial interaction network that could influence the development or progression of hypertension.

Lachnoclostridium, *Erysipelatoclostridium*, and *Gemmiger* are bacterial genera closely associated with *Halorhabdus*, *Halovivax*, or *Methanomassiliicoccus*. *Eubacterium eligens* and *Oscillibacter* sp. 57_20 are bacterial species closely related to *Candidatus Methanomassiliicoccus intestinalis* or *Halorubrum lipolyticum*. In our discovery cohort, significant changes in the abundance of these bacterial species/genera were observed in patients with hypertension, and similar trends in abundance changes for *Erysipelatoclostridium*, *Gemmiger*, *Eubacterium eligens*, and *Oscillibacter* sp. 57_20 were also seen in one or both validation cohorts of patients with hypertension. Although the roles of these bacteria in hypertension are not yet clear, they may serve as intermediaries through which gut archaea influence the development and progression of hypertension.

However, the study also acknowledges the complexity of inferring causality from correlation. While significant associations between gut archaea and hypertension are evident, determining whether these microbial shifts cause hypertension or arise as a consequence remains a challenge. Future research should aim to delineate the directional relationship between gut microbiome alterations and hypertension, potentially through longitudinal studies or interventional trials that

manipulate the gut microbiome and observe effects on blood pressure regulation.

In conclusion, our findings contribute to the emerging narrative that the gut microbiome, including its archaeal constituents, plays a critical role in hypertension. By shedding light on the specific archaeal species associated with hypertension and demonstrating their potential as diagnostic markers, this study paves the way for innovative approaches to understanding, diagnosing, and treating hypertension. As we continue to unravel the microbiome's complexities, the integration of microbial analysis into clinical practice could enhance personalized medicine, offering targeted interventions based on an individual's microbiome composition.

ACKNOWLEDGMENTS

This work was supported financially by the National Natural Science Foundation of China (No. 82170302, 92168117, 82370432), National clinical key specialty construction project-Cardiovascular Surgery, Reform and Development Program of Beijing Institute of Respiratory Medicine (Ggyfz202417), the Beijing Natural Science Foundation (No. 7222068). The funders of this research did not participate in the conception of the study design, the acquisition, analysis, or interpretation of data, nor in the drafting or revising of the manuscript.

CONFLICT OF INTEREST STATEMENT

None.

DATA AVAILABILITY STATEMENT

Metagenomic sequences for the discovery cohort and validation cohort 1 are accessible through the European Nucleotide Archive (ENA) under the identifiers PRJEB21612 and PRJEB13870, respectively. Metagenomic sequences for validation cohort 2 can be obtained from the Sequence Read Archive (SRA) database under the identifier PRJNA1096143.

References

1. Dzau VJ and Hodgkinson CP. Precision Hypertension. *HYPERTENSION*. 2024; 81(4):702-708.
2. Bludorn J and Railey K. Hypertension Guidelines and Interventions. *PRIMARY CARE*. 2024; 51(1):41-52.
3. Li J, Zhao F, Wang Y, Chen J, Tao J, Tian G, Wu S, Liu W, Cui Q, Geng B, Zhang W, Weldon R, Auguste K, Yang L, Liu X and Chen L, et al. Gut microbiota dysbiosis contributes to the development of hypertension. *MICROBIOME*. 2017; 5(1):14.
4. Chen BY, Lin WZ, Li YL, Bi C, Du LJ, Liu Y, Zhou LJ, Liu T, Xu S, Shi CJ, Zhu H, Wang YL, Sun JY, Liu Y, Zhang WC and Lu HX, et al. Roles of oral microbiota and oral-gut microbial transmission in hypertension. *J ADV RES*. 2023; 43:147-161.
5. Yan Q, Gu Y, Li X, Yang W, Jia L, Chen C, Han X, Huang Y, Zhao L, Li P, Fang Z, Zhou J, Guan X, Ding Y, Wang S and Khan M, et al. Alterations of the Gut Microbiome in Hypertension. *FRONT CELL INFECT MI*. 2017; 7:381.
6. Verhaar B, Prodan A, Nieuwdorp M and Muller M. Gut Microbiota in Hypertension and Atherosclerosis: A Review. *NUTRIENTS*. 2020; 12(10).
7. Kuziel GA and Rakoff-Nahoum S. The gut microbiome. *CURR BIOL*. 2022; 32(6):R257-R264.
8. Yousefi Y, Baines KJ and Maleki VS. Microbiome bacterial influencers of host immunity and response to immunotherapy. *CELL REP MED*. 2024:101487.
9. Spang A, Saw JH, Jorgensen SL, Zaremba-Niedzwiedzka K, Martijn J, Lind AE, van Eijk R,

- Schleper C, Guy L and Ettema T. Complex archaea that bridge the gap between prokaryotes and eukaryotes. *NATURE*. 2015; 521(7551):173-179.
10. Fadhlaoui K, Arnal ME, Martineau M, Camponova P, Ollivier B, O'Toole PW and Brugere JF. Archaea, specific genetic traits, and development of improved bacterial live biotherapeutic products: another face of next-generation probiotics. *APPL MICROBIOL BIOT*. 2020; 104(11):4705-4716.
 11. Kim JY, Whon TW, Lim MY, Kim YB, Kim N, Kwon MS, Kim J, Lee SH, Choi HJ, Nam IH, Chung WH, Kim JH, Bae JW, Roh SW and Nam YD. The human gut archaeome: identification of diverse haloarchaea in Korean subjects. *MICROBIOME*. 2020; 8(1):114.
 12. Barnett D, Mommers M, Penders J, Arts I and Thijs C. Intestinal archaea inversely associated with childhood asthma. *J ALLERGY CLIN IMMUN*. 2019; 143(6):2305-2307.
 13. Coker OO, Wu W, Wong SH, Sung J and Yu J. Altered Gut Archaea Composition and Interaction With Bacteria Are Associated With Colorectal Cancer. *GASTROENTEROLOGY*. 2020; 159(4):1459-1470.
 14. Metch JW, Burrows ND, Murphy CJ, Pruden A and Vikesland PJ. Metagenomic analysis of microbial communities yields insight into impacts of nanoparticle design. *NAT NANOTECHNOL*. 2018; 13(3):253-259.
 15. Cortese IJ, Castrillo ML, Onetto AL, Bich GA, Zapata PD and Laczeski ME. De novo genome assembly of *Bacillus altitudinis* 19RS3 and *Bacillus altitudinis* T5S-T4, two plant growth-promoting bacteria isolated from *Ilex paraguariensis* St. Hil. (yerba mate). *PLOS ONE*. 2021; 16(3):e248274.
 16. Armstrong G, Martino C, Morris J, Khaleghi B, Kang J, DeReus J, Zhu Q, Roush D,

- McDonald D, Gonzalez A, Shaffer JP, Carpenter C, Estaki M, Wandro S, Eilert S and Akel A, et al. Swapping Metagenomics Preprocessing Pipeline Components Offers Speed and Sensitivity Increases. *MSYSTEMS*. 2022; 7(2):e137821.
17. Raju SC, Molinaro A, Awoyemi A, Jorgensen SF, Braadland PR, Nendl A, Seljeflot I, Ueland PM, McCann A, Aukrust P, Vestad B, Mayerhofer C, Broch K, Gullestad L, Lappgard KT and Halvorsen B, et al. Microbial-derived imidazole propionate links the heart failure-associated microbiome alterations to disease severity. *GENOME MED*. 2024; 16(1):27.
18. Lin Y, Lau HC, Liu Y, Kang X, Wang Y, Ting NL, Kwong TN, Han J, Liu W, Liu C, She J, Wong SH, Sung JJ and Yu J. Altered Mycobiota Signatures and Enriched Pathogenic *Aspergillus rambellii* Are Associated With Colorectal Cancer Based on Multicohort Fecal Metagenomic Analyses. *GASTROENTEROLOGY*. 2022; 163(4):908-921.
19. Maleki S, Razavi SH, Yadav H and Letizia MM. New horizon to the world of gut microbiome: seeds germination. *CRIT REV FOOD SCI*. 2024:1-19.
20. Aya JV, Vega LC, Munoz E, Munoz M, Lopez DF, Guzman MP, Martinez DF, Cruz-Saavedra LB, Castillo AK, Quintero KJ, Gonzalez SR, Cala MP and Ramirez JD. Divergent Gut Microbiota: Archaeal and Bacterial Signatures Unveil Unique Patterns in Colombian Cyclists Compared to Weightlifters and Non-Athletes. *ADV BIOL-GER*. 2024:e2400069.
21. Hammerhoj A, Gubatan JM and Nielsen OH. Gut Microbiome and Disorders of the Gastrointestinal Tract. *MICROORGANISMS*. 2024; 12(3).
22. Eme L, Spang A, Lombard J, Stairs CW and Ettema T. Archaea and the origin of eukaryotes. *NAT REV MICROBIOL*. 2018; 16(2):120.

23. Lurie-Weinberger MN and Gophna U. Archaea in and on the Human Body: Health Implications and Future Directions. PLOS PATHOG. 2015; 11(6):e1004833.
24. Brochier-Armanet C, Boussau B, Gribaldo S and Forterre P. Mesophilic Crenarchaeota: proposal for a third archaeal phylum, the Thaumarchaeota. NAT REV MICROBIOL. 2008; 6(3):245-252.
25. Krawczyk A, Gosiewski T, Zapala B, Kowalska-Duplaga K and Salamon D. Alterations in intestinal Archaea composition in pediatric patients with Crohn's disease based on next-generation sequencing - a pilot study. GUT MICROBES. 2023; 15(2):2276806.
26. Bai X, Sun Y, Li Y, Li M, Cao Z, Huang Z, Zhang F, Yan P, Wang L, Luo J, Wu J, Fan D, Chen H, Zhi M, Lan P and Zeng Z, et al. Landscape of the gut archaeome in association with geography, ethnicity, urbanization, and diet in the Chinese population. MICROBIOME. 2022; 10(1).
27. Serino I, Squillaci G, Errichiello S, Carbone V, Baraldi L, La Cara F and Morana A. Antioxidant Capacity of Carotenoid Extracts from the Haloarchaeon *Halorhabdus utahensis*. ANTIOXIDANTS-BASEL. 2023; 12(10).
28. Krawczyk KT, Loch C and Kowalewicz-Kulbat M. Halophilic Archaea *Halorhabdus Rudnickae* and *Natrinema Salaciae* Activate Human Dendritic Cells and Orient T Helper Cell Responses. FRONT IMMUNOL. 2022; 13:833635.
29. Kowalewicz-Kulbat M, Krawczyk KT, Szulc-Kielbik I, Rykowski S, Denel-Bobrowska M, Olejniczak AB, Loch C and Klink M. Cytotoxic effects of halophilic archaea metabolites on ovarian cancer cell lines. MICROB CELL FACT. 2023; 22(1):197.
30. Poles MZ, Juhasz L and Boros M. Methane and Inflammation - A Review (Fight Fire with

- Fire). *INTENS CARE MED EXP*. 2019; 7(1):68.
31. Houshyar Y, Massimino L, Lamparelli LA, Danese S and Ungaro F. Going Beyond Bacteria: Uncovering the Role of Archaeome and Mycobiome in Inflammatory Bowel Disease. *FRONT PHYSIOL*. 2021; 12:783295.
 32. Cisek AA, Szymanska E, Aleksandrak-Piekarczyk T and Cukrowska B. The Role of Methanogenic Archaea in Inflammatory Bowel Disease-A Review. *J PERS MED*. 2024; 14(2).
 33. Borrel G, McCann A, Deane J, Neto MC, Lynch DB, Brugere JF and O'Toole PW. Genomics and metagenomics of trimethylamine-utilizing Archaea in the human gut microbiome. *ISME J*. 2017; 11(9):2059-2074.
 34. Mutengo KH, Masenga SK, Mweemba A, Mutale W and Kirabo A. Gut microbiota dependant trimethylamine N-oxide and hypertension. *FRONT PHYSIOL*. 2023; 14:1075641.
 35. Luqman A, Hassan A, Ullah M, Naseem S, Ullah M, Zhang L, Din AU, Ullah K, Ahmad W and Wang G. Role of the intestinal microbiome and its therapeutic intervention in cardiovascular disorder. *FRONT IMMUNOL*. 2024; 15:1321395.

Figure Legends

Figure 1. Species richness analysis and overview of sample selection. A-C: Rarefaction curves depicting species richness across different cohorts: the discovery cohort (A), validation cohort 1 (B), and validation cohort 2 (C). D: Sample selection was based on four primary filtering criteria: exclusion of samples with missing or incomplete raw data, removal of samples with high archaea content, exclusion of samples with low archaea content, and removal of samples with insufficient

archaeal sequencing depth.

Figure 2. Distribution of enteric archaea in discovery and validation cohorts. A-B. Relative abundance of archaea phyla (A) and species (B) in discovery cohort (CON, n=42; HTN, n=46). C-D. Relative abundance of archaea phyla (C) and species (D) in validation cohort 1 (CON=35, pHTN, n=53, HTN, n=87). E-F. Relative abundance of archaea phyla (E) and species (F) in validation cohort 2 (CON, n=39, HTN, n=39).

Figure 3. Alterations in enteric archaea associated with hypertension (HTN). A-B: Comparison of species richness and Shannon diversity indices between control participants (CON, n=42) and HTN patients (n=46) in the discovery cohort, analyzed via the Mann-Whitney U test. C-D: Species richness and Shannon diversity indices in validation cohort 1 (CON, n=35; HTN, n=87), compared using the Mann-Whitney U test. E-F: Analysis of species richness and Shannon diversity indices in validation cohort 2 (CON, n=39; HTN, n=39), utilizing the Mann-Whitney U test. G: Principal coordinates analysis (PCoA) based on Bray-Curtis dissimilarity showcases differences between CON (n=42) and HTN (n=46) in the discovery cohort, assessed with the Adonis method. H: PCoA diagram indicating Bray-Curtis dissimilarity in validation cohort 1, evaluating dissimilarities between CON (n=35) and HTN (n=87) groups using the Adonis method. I: PCoA based on Bray-Curtis dissimilarity between CON (n=39) and HTN (n=39) in validation cohort 2, analyzed via the Adonis method. J-L: Differentially abundant archaeal genera between CON and HTN groups across the discovery cohort (J: n=42 CON vs. n=46 HTN), validation cohort 1 (K: n=35 CON vs. n=87 HTN), and validation cohort 2 (L: n=39 CON vs. n=39 HTN). *p<0.05, **p<0.01.

Figure 4. Potential of enteric archaea species as diagnostic markers for hypertension. A: Heatmap

depicting fold changes in enteric archaea species in hypertensive patients (HTN, n=46) relative to the mean normalized abundance in the control group (CON, n=42) within the discovery cohort. B-C: Decline in abundance of *Candidatus Methanomassiliicoccus intestinalis* and *Halorubrum lipolyticum* observed both in the discovery and validation cohorts 1 and 2. D: Evaluation of 11 CON-enriched archaea markers for HTN classification against CON using logistic regression in the discovery cohort, achieving an area under the curve (AUC) of 0.85. E: Validation of these diagnostic markers in validation cohort 1, with an AUC of 0.69 for differentiating CON (n=35) from HTN (n=87). F: Further validation in cohort 2 showed an AUC of 0.91 for distinguishing CON (n=39) from HTN (n=39), underscoring their diagnostic efficacy. G-I: Spearman correlation analysis via heatmap plots illustrates the relationship between CON-enriched archaea markers and clinical indices across the discovery cohort (G), validation cohort 1 (H), and validation cohort 2 (I). * p<0.05, ** p<0.01.

Figure 5. Correlations between archaeal and bacterial alpha diversity across cohorts. A-B: In the discovery cohort, a significant positive correlation exists between the alpha diversities of archaea and bacteria (measured using the Chao index) within both the control (CON) group (A) and the hypertension (HTN) group (B). C-E: Significant positive correlation is also observed in validation cohort 1, across the control (CON) group (C), pre-hypertension (pHTN) group (D), and hypertension (HTN) group (E), with alpha diversities assessed by the Chao index. F-G: Significant positive correlations between the alpha diversities of archaea and bacteria, based on the Chao index, are noted in validation cohort 2 for both the control (CON) group (F) and the hypertension (HTN) group (G).

Figure 6. Ecological networks of archaeal and bacterial genera in control and hypertension groups

across cohorts. A-C: Co-occurrence networks between key archaeal genera and distinct bacterial genera within the control (CON) group across the discovery cohort (A), validation cohort 1 (B), and validation cohort 2 (C). D-F: Co-exclusion networks between signature archaeal genera and differential bacterial genera within the hypertension (HTN) group, across the discovery cohort (D), validation cohort 1 (E), and validation cohort 2 (F). Correlation analyses were conducted using SparCC, with significance determined at P values < 0.05. Only correlations with absolute values greater than 0.3 are shown, ensuring the representation of ecologically meaningful interactions.

Table 1. Clinical Details of Study Cohorts

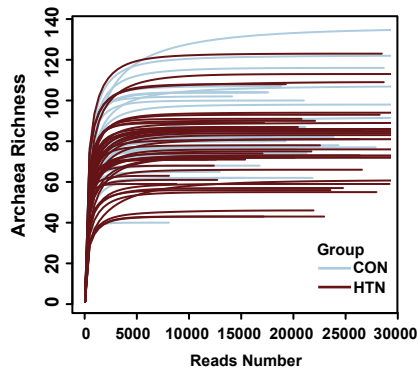
Cohort	Discovery Cohort			Validation Cohort 1				Validation Cohort 2		
	CON	HTN	P value	CON	pHTN	HTN	P value	CON	HTN	P value
Sample Size	42	46	N/A	35	53	87	N/A	39	39	N/A
Male (%)	23(54.8)	29(63.0)	0.56719	28(80)	49(92.5)	81(93.1)	0.07089	21(53.8)	34(87.2)	0.00288
Age	56(8.3)	56.7(9.7)	0.70069	54.3(5.8)	51.6(6.6)	53.7(5.6)	0.06759	32.2(11.5)	34.5(6)	0.27873
BMI	23.2(2.5)	23.3(2.9)	0.82651	25.3(3.1)	25.4(2.8)	26.1(3.7)	0.34069	22.8(2.4)	27.3(3.7)	<0.0001
				(n=34)	(n=49)	(n=79)				
SBP	111.5(6.6)	162.9(18.8)	<0.0001	115.3(7.5)	127.7(10.5)	149.4(14.2)	<0.0001	117.8(10.5)	147.2(4.8)	<0.0001
DBP	70.3(6.6)	99.5(10.5)	<0.0001	74(6.4)	82.2(5.9)	94.7(9.3)	<0.0001	74.1(8.1)	94.1(4.1)	<0.0001

Abbreviations: CON, Control; pHTN, Pre-hypertension; HTN, hypertension; BMI, Body Mass Index; SBP, Systolic Blood Pressure; DBP, Diastolic Blood Pressure. CON is characterized by SBP≤120 mmHg, and DBP≤80 mmHg in subjects not receiving antihypertensive treatments. pHTN is identified in individuals with 125 mmHg ≤SBP≤139 mm Hg, or 80 mmHg ≤DBP≤89 mmHg, who are not on antihypertensive medication. Hypertension (HTN) is diagnosed in patients

with SBP \geq 140 mmHg, or DBP \geq 90 mmHg, in the absence of antihypertensive treatments. All continuous variables are presented as mean \pm standard deviation unless otherwise noted. P-value from the ANOVA/Kruskal Wallis test comparing all three groups and the t-test comparing two groups for the continuous variable and Chi-squared test comparing all groups for the categorical variable.

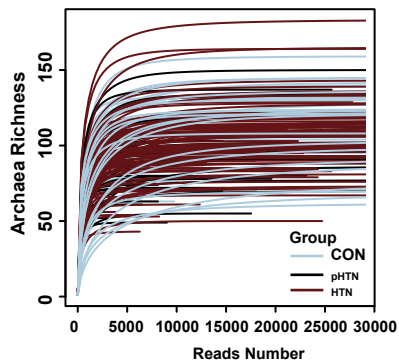
A

Discovery Cohort



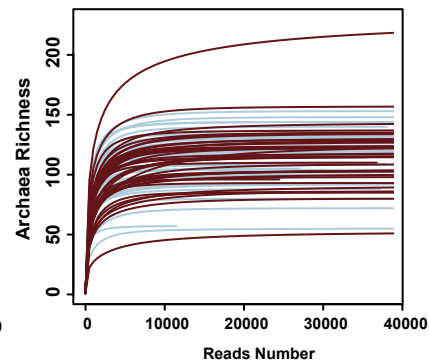
B

Validation Cohort 1



C

Validation Cohort 2



D

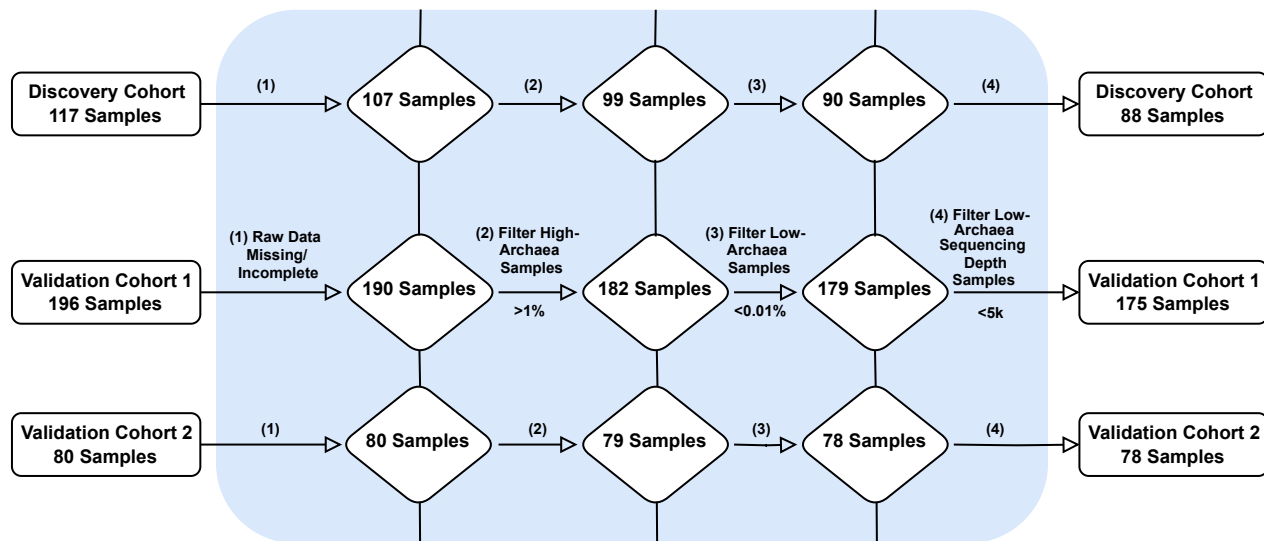
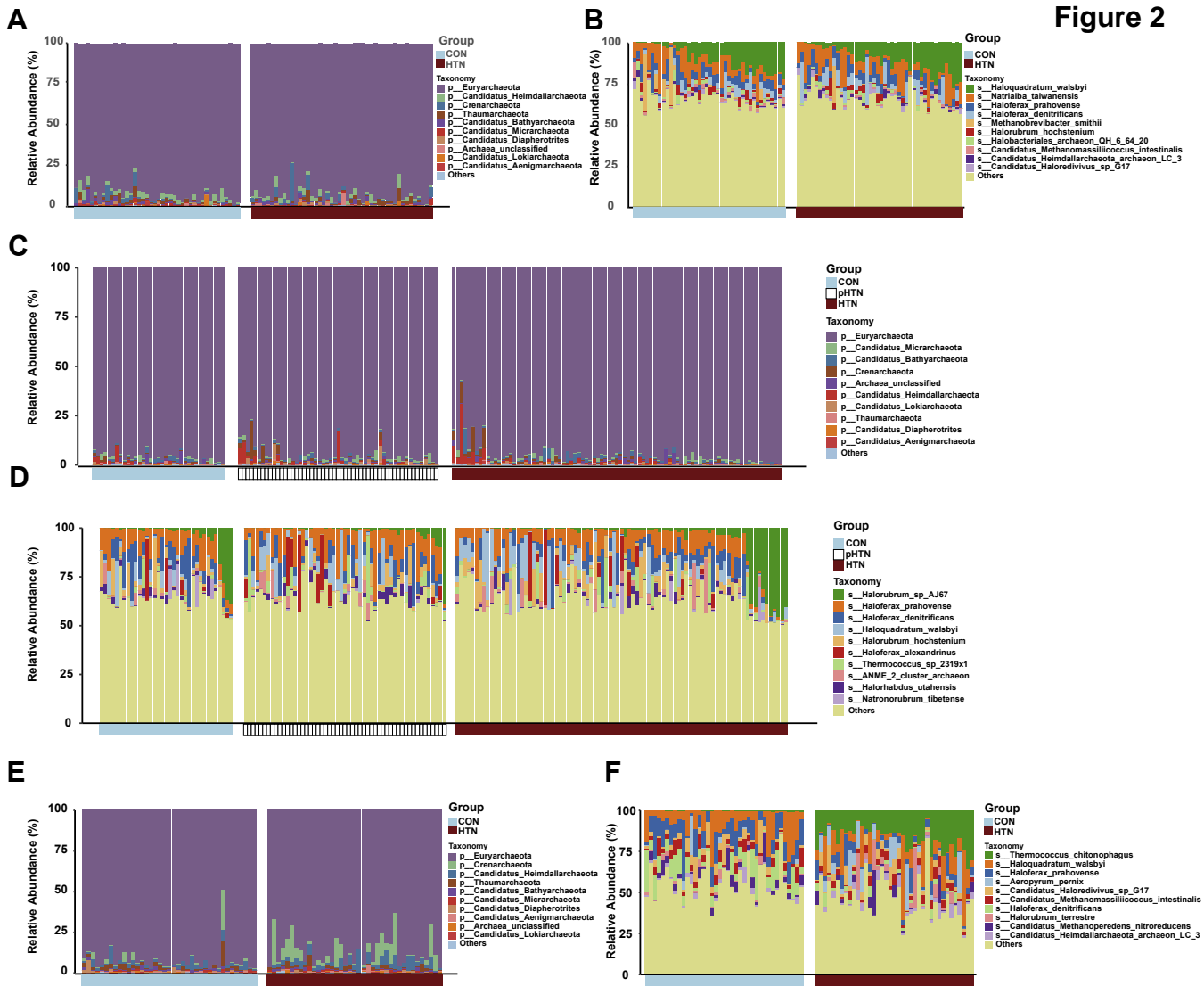
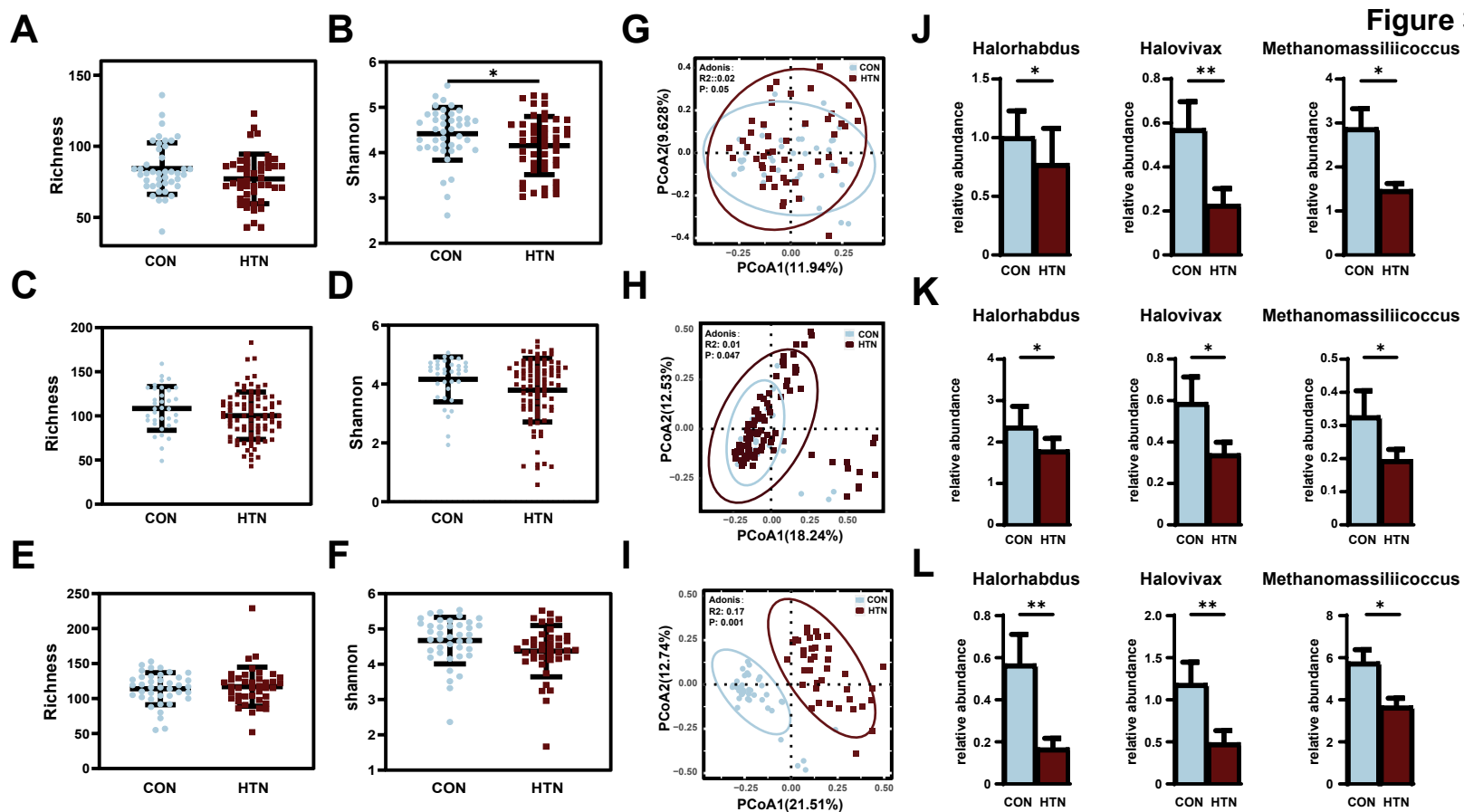
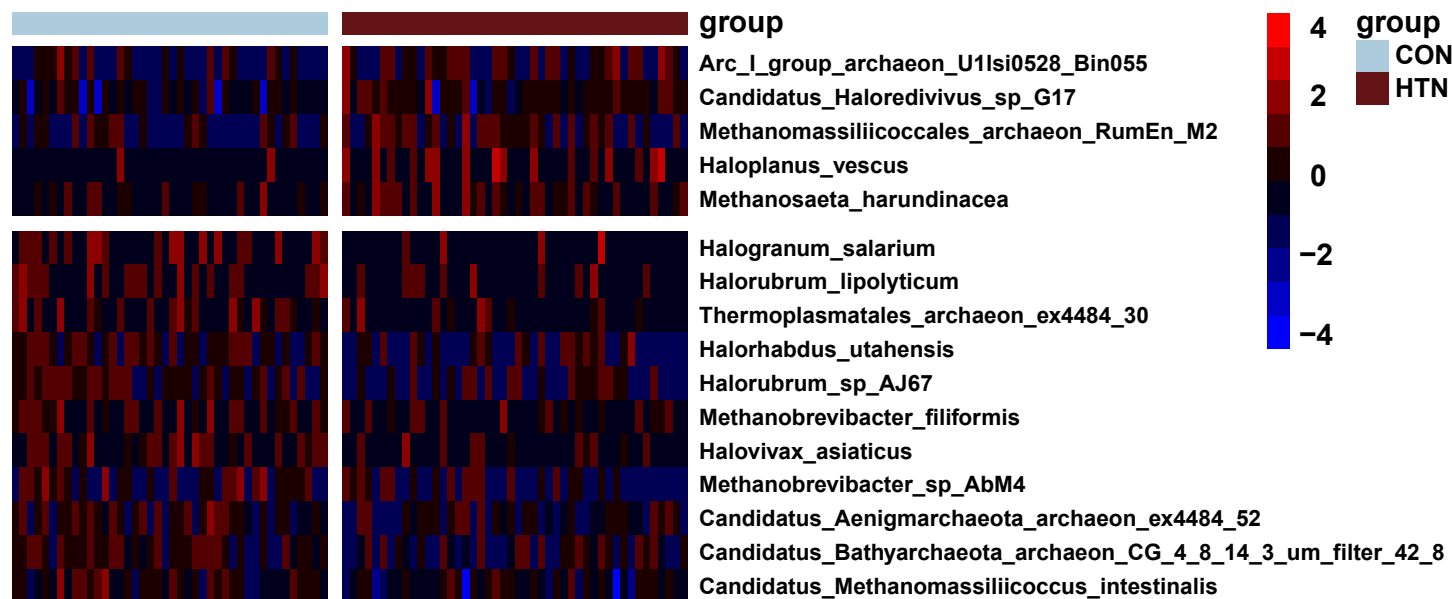


Figure 2

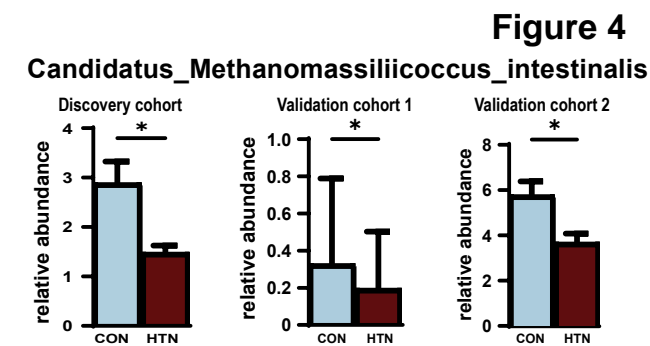




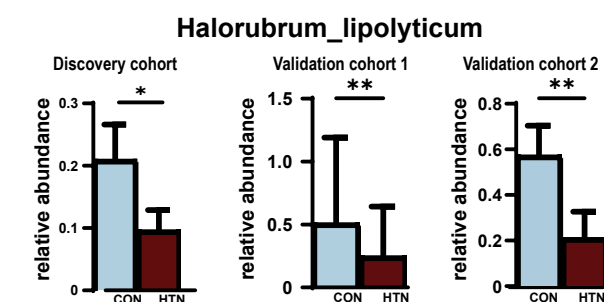
A



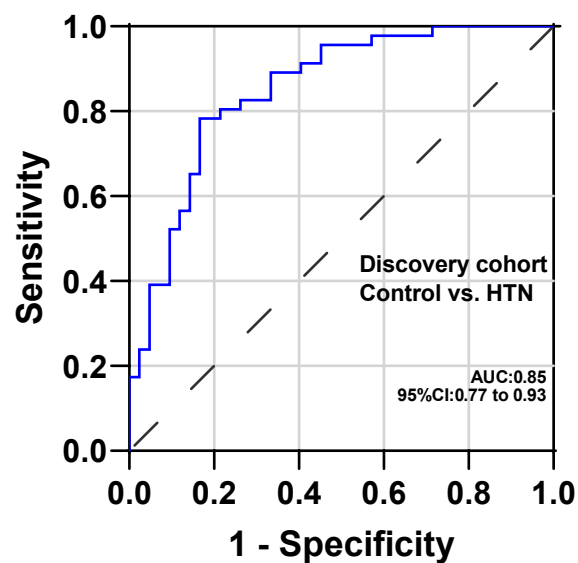
B



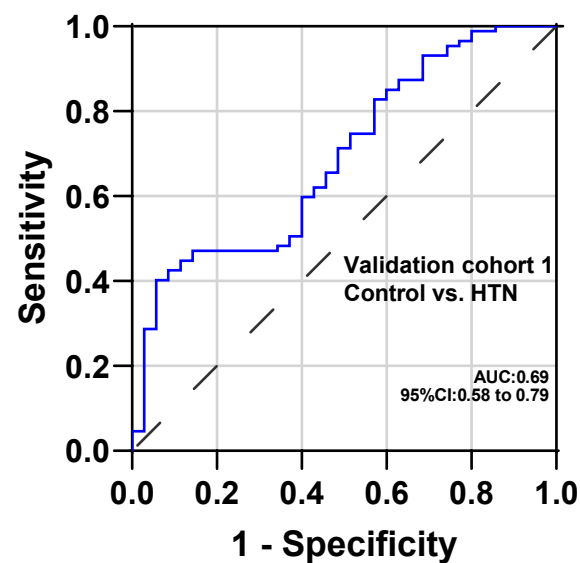
C



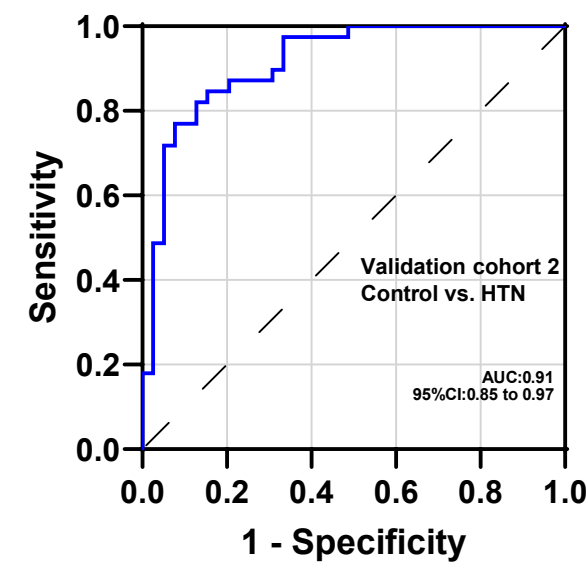
D



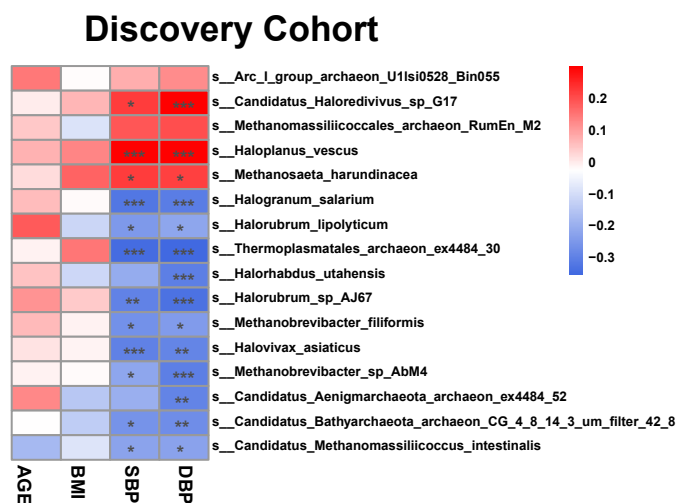
E



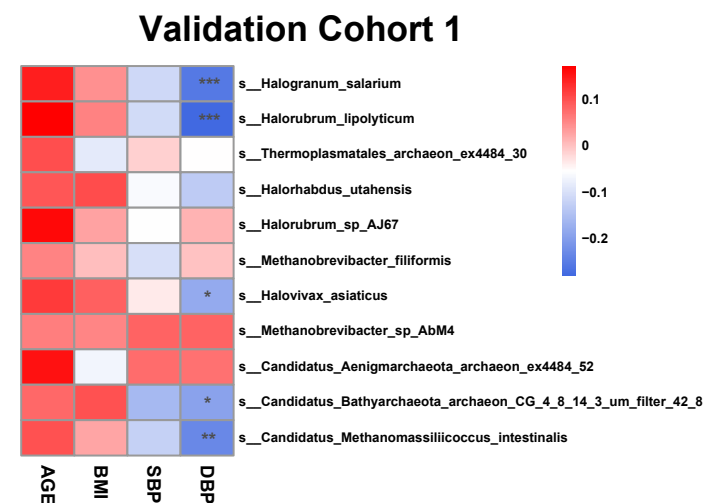
F



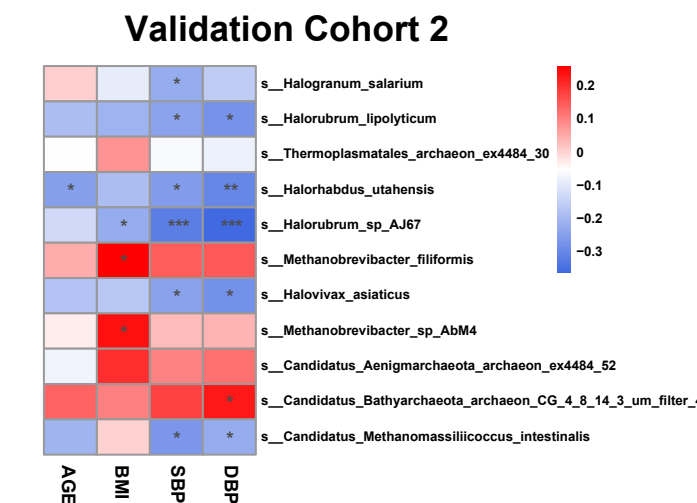
G

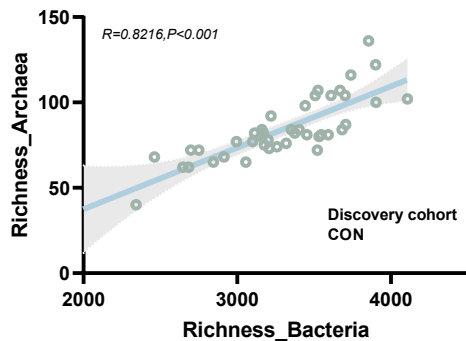
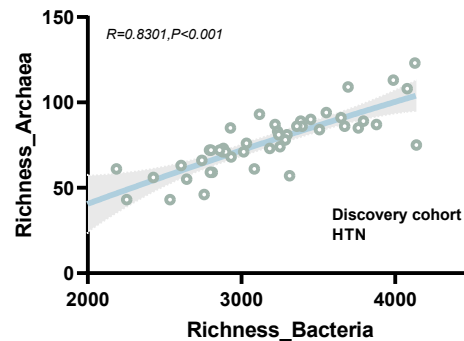
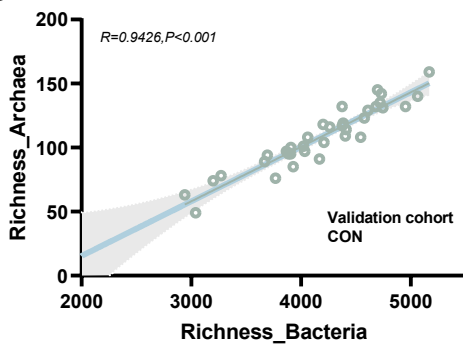
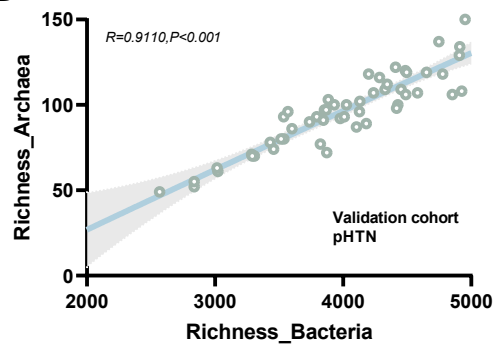
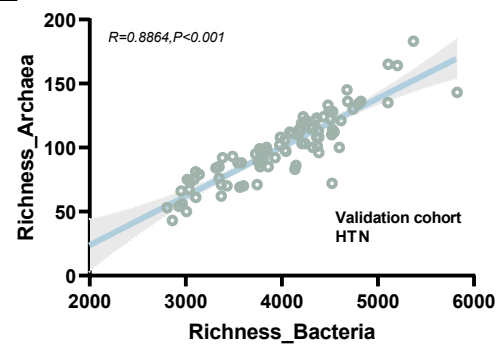
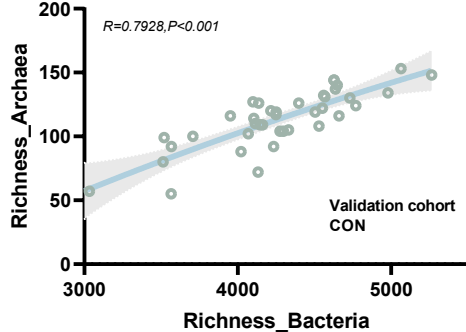
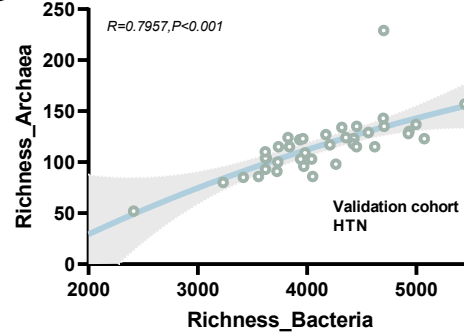


H



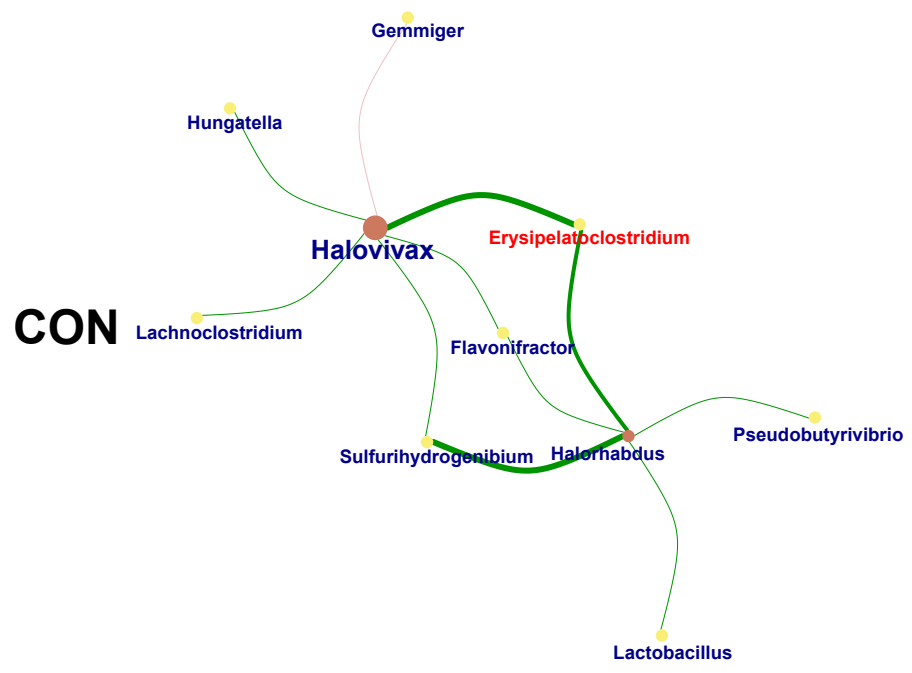
I



A**B****C****D****E****F****G**

A

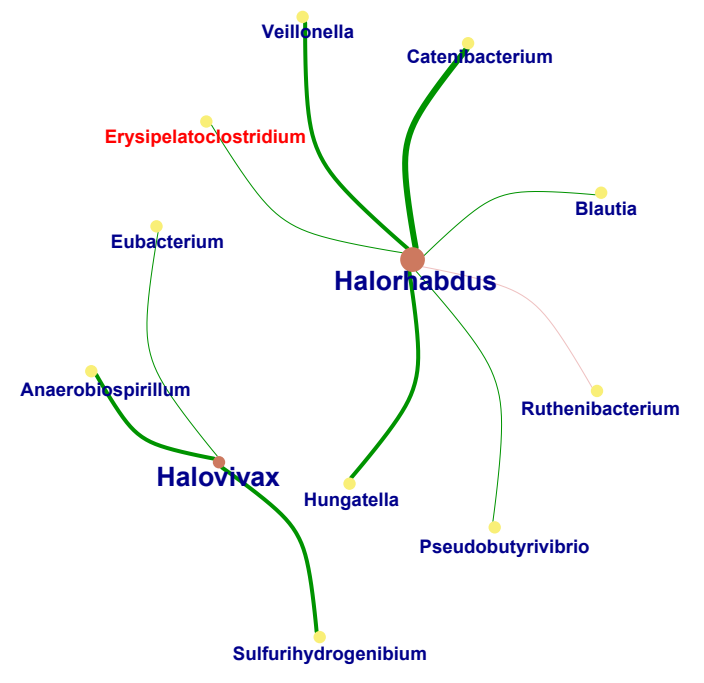
Discovery Cohort



CON

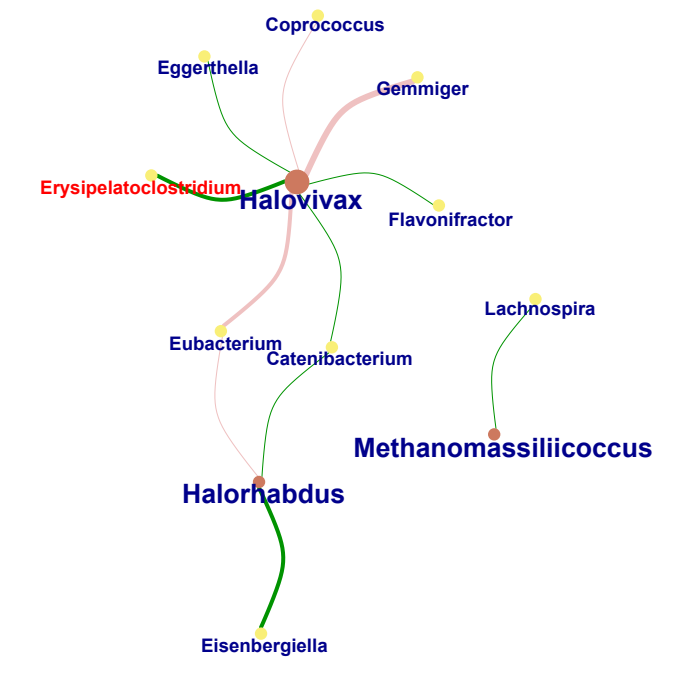
B

Validation Cohort 1



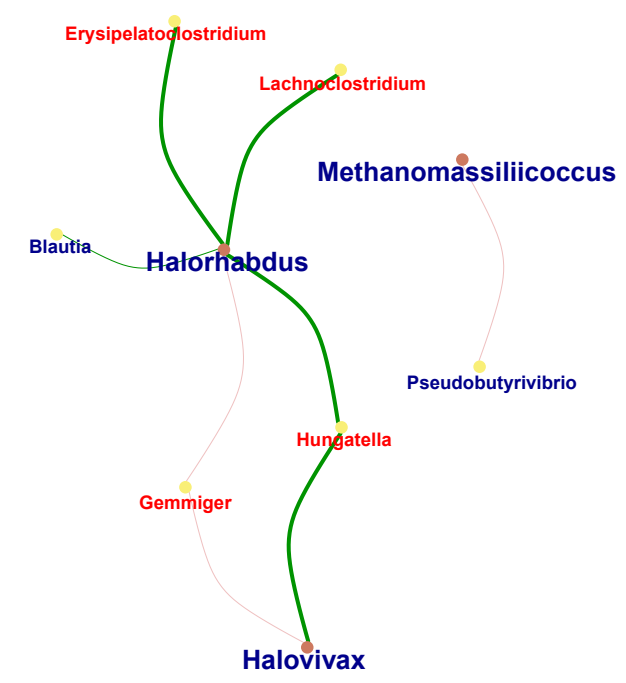
C

Validation Cohort 2

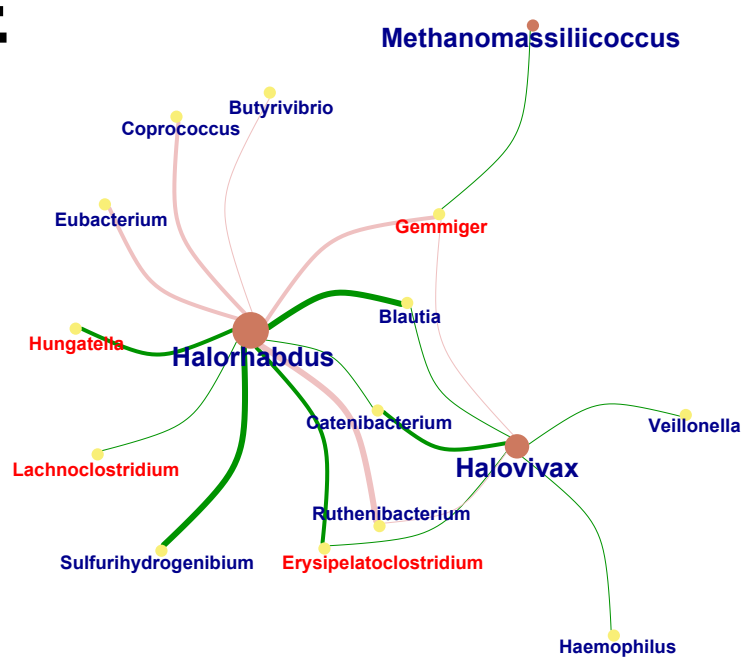


D

HTN



E



F

