

1  
2  
3  
4  
5  
6  
7  
8  
9  
10  
11  
12  
13  
14  
15  
16  
17  
18  
19  
20  
21  
22  
23  
24  
25  
26  
27

Facilitators and barriers to contraception access and use for Hispanic American adolescent women: An integrative literature review

Lindsay M. Batek<sup>1¶\*</sup>, Natalie M. Leblanc<sup>1&</sup>, Amina P. Alio<sup>2&</sup>, Karen F. Stein<sup>1&</sup>, James M. McMahon<sup>1&</sup>

<sup>1</sup> School of Nursing, University of Rochester Medical Center, Rochester, NY, United States of America

<sup>2</sup> School of Medicine and Dentistry, Department of Public Health Sciences, University of Rochester Medical Center, Rochester, NY, United States of America

\*Corresponding author

E-mail: [lindsay\\_batek@URMC.rochester.edu](mailto:lindsay_batek@URMC.rochester.edu) (LB)

## 28 **Abstract**

29 **Statement of the Problem:** Hispanic American adolescents experience high rates of pregnancy  
30 with profound consequences. Compared with White teens, Hispanic teens use contraception less  
31 frequently and often choose less effective forms of contraception. Access to contraception is a  
32 primary barrier to use which contributes to relatively high and disparate rates of pregnancy in  
33 Hispanic teens. This integrative review identifies facilitators and barriers of contraception access  
34 and use for Hispanic women, 13-17 years of age, living in the U.S.

35 **Methodology:** Following the Whittemore and Knafl (2005) methodology and PRISMA  
36 guidelines, peer reviewed studies were retrieved from PUBMED, CINAHL and EMBASE. The  
37 *Mixed Methods Appraisal Tool* was used to assess the study quality and thematic analysis was  
38 used to categorize barriers and facilitators.

39 **Findings:** Of 131 studies retrieved, 16 met inclusion criteria. Individual, interpersonal and  
40 healthcare provider factors were identified as primary categories of barriers and facilitators with  
41 contextual issues comprising an additional barrier category. Individual level barriers were  
42 disproportionately represented and further categorized into themes: beliefs/misconceptions,  
43 dislike of contraception, pregnancy risk perception, lack of knowledge, and lack of control. The  
44 most frequently reported facilitators were perceived parent comfort discussing sexual health and  
45 past experience of pregnancy.

46 **Discussion:** Limitations in this review may stem from heterogeneity in the acculturation and  
47 geography of participants and analysis by a single reviewer. Implications include considering the  
48 range of information sources and the influence they have on risk perception and risk mitigation  
49 for this population.

50 **Conclusion & Significance:** Adolescents describe many modifiable influences on contraception  
51 access and use. Misperceptions related to contraception, stemming from beliefs and perceptions,  
52 can be corrected through increased access to reliable sources of sex education, parental support,  
53 and direct access to nurses and healthcare providers. Awareness of these influences can inform  
54 further research and intervention development to address these health disparities.

## 55 **Introduction**

56 Unintended teen pregnancy in Hispanic women is a significant public health problem that  
57 has profound consequences. Compared with White teens, Hispanic teens use less contraception  
58 and methods used are less effective [1, 2]. Further, Hispanic teens are less likely to have used  
59 contraception at last intercourse (24% and 12%, respectively) and to have used a prescription  
60 (more effective) method of contraception (38% for White and 18% for Hispanic teens)[3].  
61 Hispanic teens have described significant barriers to accessing effective contraception, which  
62 contributes to relatively high rates of teen pregnancy [1].

63 Hispanic teen women experience teen pregnancy at a rate of 25.3 births per 1,000  
64 women, compared with 11.4 birth per 1,000 Non-Hispanic White women [4]. In addition to  
65 being a costly problem with estimated annual healthcare costs of \$6 billion in lost tax revenue  
66 and \$3 billion in public expenses [5], it has significant short- and long-term consequences for  
67 teen mothers and their children [6, 7]. Teen pregnancy can affect educational attainment,  
68 economic status, and mental, social, and physical health for mother and child. The school  
69 dropout rate is higher for pregnant teens, which disrupts education and can subsequently limit  
70 employment possibilities, earning potential and increase risk of poverty [5]. Teen mothers have  
71 an increased risk of depression, substance abuse, and criminal conviction [5]. Children of teen  
72 mothers may have adverse health and developmental outcomes including prematurity, low birth

73 weight, higher risk of perinatal and infant mortality, and poorer long term cognitive development  
74 [5]. These consequences affect long-term health trajectories and disproportionately affect  
75 Hispanic adolescents and their children [8].

## 76 **Disparities in Contraception Use and Access**

77 According to the CDC, 75% of pregnancies in women between the ages of 15-19 years  
78 are unintended [9]. Unintended teen pregnancy is avoidable through abstinence or consistent use  
79 of effective contraception [10]. Contraceptive misuse or nonuse [11] or use of less effective  
80 contraception [12] may be partially explained by lack of knowledge about pregnancy risk, birth  
81 control, barriers to access, or distrust of the healthcare system [12-14]. The most effective  
82 methods of contraception for sexually active teens, such as oral contraceptive pills, intrauterine  
83 devices, and contraceptive implants, require a prescription [10, 13].

84 Healthcare access is defined as “the timely use of personal health services to achieve the  
85 best health outcomes” [15]. The Institute of Medicine definition of ‘access’ combines it with  
86 healthcare use, which can be considered “realised access” [16]. Identified barriers to  
87 contraception access include affordability, shame, embarrassment and physical difficulty  
88 reaching services and these barriers disproportionately effect individuals from marginalized  
89 populations based on age, income, race/ethnicity, rurality, and education [17]. In contrast,  
90 expanded access to family planning services has been shown to increase use of contraception and  
91 reduce teen pregnancy rates [10, 13]. However, adolescents may have little experience and fewer  
92 resources to access care and are less likely to receive adequate care when they receive services  
93 [12, 18].

94 Despite the myriad of known barriers to contraception access, three out of four teens are  
95 successfully finding and using contraception [1] which raises questions about the factors that

96 determine contraception access and use and how some women are able to access contraception  
97 while others are not.

## 98 ***Definitions***

99           This integrative review was conducted to identify literature related to the access and use  
100 of contraception among female Hispanic adolescents or teens, living in the U.S. The World  
101 Health Organization defines ‘adolescence’ within the age range of 10-19 years [19]; however, for  
102 this study we used a narrower age range of 13-17 years old because of the high rates of  
103 inconsistent contraceptive use and unintended pregnancy in this group [20]. ‘Hispanic’ is defined  
104 as “a person of Cuban, Mexican, Puerto Rican, Cuban, South or Central American, or other  
105 Spanish culture or origin, regardless of race” [21]. Given that Hispanic is an ethnic identity,  
106 individuals who identify as Hispanic may pertain to several distinct racial groups, the majority of  
107 whom identify as multiracial [22]. ‘Contraception’ is defined as the “intentional prevention of  
108 conception through the use of various devices, sexual practices, chemicals, drugs, or surgical  
109 procedures” [23]. While abstinence is included in the definition of contraception, for this review,  
110 our interest is in sexually active teens accessing contraception.

## 111 **Methods**

### 112 **Study search**

113           This integrative review follows the Whitemore and Knafl [24] methodology which is a  
114 five-step process that identifies the problem, conducts a well-defined literature search, assesses  
115 study quality, analyzes data, and articulates conclusions. The *Mixed Methods Appraisal Tool*,  
116 *Version 2018* (MMAT)[25], was used to assess the quality of included studies. The data from

117 primary sources was extracted into tables and categorized, synthesized, and summarized into  
118 integrated conclusions.

119 A systematic search was conducted from three online databases: PUBMED, CINAHL  
120 and EMBASE. Keywords searched were (Hispanic[tiab] OR Latina [tiab]) AND  
121 ("Adolescent"[Mesh] OR "teen\*" [tiab]) AND ("Contraception" [Mesh] OR "birth control"[tiab])  
122 AND ("Access"[tiab] OR "decision" [tiab]). Additional hand searching and searching from  
123 reference lists of included studies contributed to the search.

## 124 **Eligibility Criteria**

125 Inclusion criteria for this review were studies published in English, in peer reviewed  
126 journals, prior to February 2024 that addressed female Hispanic adolescent access to  
127 contraception or birth control. Studies were included when the sample included Hispanic  
128 adolescent women between the ages 13-17 years of age living in the United States. Studies were  
129 selected based on meeting the inclusion criteria and non-Hispanic groups, males and multiple age  
130 groups were included if data was presented separated by race/ethnicity (Hispanic), gender  
131 (female), and age (13-17 years old).

132 Studies were excluded if they were not peer reviewed, gray literature, non-English  
133 studies, and studies that were not related to the research questions such as intervention studies,  
134 healthcare provider strategies or studies about parental views of contraception. Intervention  
135 studies were excluded because the purpose of this review is to identify naturally occurring  
136 strategies reported by adolescents that facilitate access to contraception.

## 137 **Selection Process**

138 Once the search was completed, duplicate studies were removed, titles and abstracts were  
139 screened for eligibility, and full texts were then reviewed for inclusion including relevance to the

140 study aims. Excluded studies were grouped by reason for exclusion as noted on the PRISMA  
141 flow diagram (Fig 1) [26]. The initial search resulted in 131 studies, of which 16 were included  
142 in this integrative review.

### 143 **Quality Appraisal**

144 The MMAT [25] is a critical appraisal tool designed for reviews that include qualitative,  
145 quantitative, and mixed methods studies [25]. This tool facilitates the process of appraising  
146 various types of literature in one tool by answering the series of quality assessment questions as  
147 they are presented rather than calculating an overall score [25].

### 148 **Data Extraction and Synthesis**

149 Following the process outlined by Whitemore and Knafl [24], data were extracted from  
150 the 16 selected articles including sample characteristics, location, study design, theory used,  
151 measurement tools, outcomes, barriers, and facilitators. Barriers and facilitators were identified  
152 by reviewing the data, and thematic analysis [27] was utilized to create initial codes, collate, and  
153 group codes into themes and categories. Each occurrence of a barrier or facilitator in the 16  
154 selected studies was counted, and the total frequencies across all papers were tabulated and  
155 organized into tables and figures.

## 156 **Results**

### 157 **Study Selection**

158 Of the 131 articles identified from the database search, 31 duplicates were removed, 100 articles  
159 were screened by their title and abstract, 46 of which were excluded because they were off topic.  
160 The retrieval of full text was sought for 54 records. Full text articles were unavailable for 8

161 articles, and 46 were screened. Reasons for exclusion are noted on the PRISMA [26] flow  
162 diagram. The remaining 16 articles were included in the review.

163 **Fig 1. PRISMA 2020 Flow Diagram**

164  
165 *Study methodology.* This review was based on 16 peer reviewed articles published about barriers  
166 and facilitators to contraception in Hispanic adolescent women living in the U.S. This review  
167 included qualitative studies (n=11), quantitative descriptive studies (n=3), and mixed method  
168 studies (n=2). For the qualitative studies, the type of qualitative methodology (grounded theory  
169 or ethnography, etc.) was rarely described. Qualitative studies relied mostly on interviews [28-  
170 34] and focus groups [8, 11, 18, 31, 35]. Barral et al. [6] used mixed methods and grounded  
171 theory focus groups and open-ended questions. Gilliam et al. [1] used focus groups to develop a  
172 survey instrument to later give to participants. For the quantitative studies included in this  
173 review, there were very few validated scales or measurement tools that were used to measure the  
174 outcomes of interest. Of the few quantitative studies that used survey instruments, measures used  
175 included the contraceptive failure rate (CFR); contraceptive risk indices (CRI), which represents  
176 pregnancy risk; and the pregnancy risk index (PRI), which is the probability of pregnancy based  
177 on sexual activity and birth control method [2]. Two studies were secondary analyses [2, 36] and  
178 one was a retrospective chart review [13].

179 **Study Quality**

180 The aim and purpose of the studies were well-aligned with the research questions, chosen  
181 methodology and interpretation of the data. The MMAT indicated that the selected studies were  
182 generally of high quality with low risk of bias although a few weaknesses were apparent, such as  
183 use of a convenience sample, conceptual issues such as grouping belief and experiences together,



184 not explicitly stating the validity of the measures used, and a lack of information about non-  
185 responders. The results of the quality assessment are listed on the third column of Table 1.

## 186 **Study Characteristics**

187 *Study Size and Geography.* The sample size in the studies ranged from small (n=8) in the  
188 qualitative studies, to large, the National Survey of Family Growth, N=9321. One study had  
189 focus groups from Mexico and California [31] and all of the remaining studies took place in the  
190 U.S. in both rural [6, 34] and urban areas [1, 11, 35]. Some studies described the state or city  
191 locations, with represented regions in the U.S. including the East Coast (Baltimore [35]);  
192 Midwest (Kansas [6], Chicago [1, 11]); the South (Alabama [32], North Carolina [34]); and the  
193 West Coast (California [31]).

194 *Demographic Descriptions.* Frequent labels used to describe participants included Latino or  
195 Hispanic youth [1, 2, 6, 8, 13, 18, 29, 30, 32-34, 36]. Some studies described the samples (at  
196 least partly) as Mexican American [11, 28, 31] and immigrant Latinas [35]. The countries and  
197 places of origin of participants were not always described but those reported were Mexican [28,  
198 31, 33], Puerto Rican [8, 33], and Dominican [8].

199 *Acculturation.* The acculturation level of the participants was inconsistently provided. Some  
200 studies describe the acculturation level of participants in the results [1, 6, 28, 31, 33]. When  
201 acculturation was described, it was by place of birth [30, 32, 34, 35], length of time in the U.S.  
202 [32], or acculturation score which was determined by a language based scale [1, 33] or a  
203 modified version of the Short Acculturation Scale for Hispanics (SASH) combined with years  
204 living in the US [6].

205 *Theoretical Frameworks.* Some studies articulated a theory that guided their research such as the  
206 Theory of Planned Behavior [34, 35], the Health Belief Model [29], the Socioecological Model

207 of Sexual Health [32], Pechansky and Thomas' Theory of Access [31], and the Construct  
208 Accessibility Model [33].

209 **Table 1: *Included Studies***

<b>Author details, date</b>	<b>Study objective(s)</b>	<b>Study design, Analysis, Quality Assessment</b>	<b>Sample and context</b>	<b>Authors' main conclusions</b>
Becerra & de Anda, 1984 [28]	The perspectives of Mexican American and White adolescents were examined regarding their romantic and sexual relationships, sex education and birth control and reactions to pregnancy and motherhood.	Open-ended interviews with women who were currently pregnant, had been pregnant in the past, or had miscarried. QA: Strong	32 Mexican American and 17 White adolescents who were pregnant or had been pregnant in the past between 13-19 years old	Pregnancy was a result of not being able to view pregnancy as a potential reality for oneself. The majority of Mexican American adolescents became pregnant in the context of a long-term relationship and shared close emotional bonds with the baby's father.

Barral, et al., 2020 [37]	To describe the knowledge, beliefs, and attitudes about contraception among rural Latino adolescents and young adults.	Focus groups and surveys. FGs discussed attitudes, norms and perceived sexual behaviors, individual surveys assessed demographics and acculturation demographics and acculturation. QA: Strong	84 Latino youth aged 15-24 years from rural Kansas	Themes that emerged included geographical/rural location, cultural barriers, religious influences, lack of sexual education, and personal attitudes toward pregnancy and contraception use. Participants described close-knit communities with limited access to confidential reproductive health care and cultural and religious factors as influences on family planning behaviors and obstruct access to sexual health and contraception knowledge and services. Ambivalence regarding pregnancy intentions was common, along with the belief that contraception equates with abortion.
Carvajal et al., 2017 [35]	To identify factors that influence contraceptive decision making among Latinas in Baltimore.	Focus groups and semi structured interviews QA: Strong	8 Latina women between the ages of 15-24 years old in Baltimore, MD	The main driver of contraceptive intentions is the desire to avoid unintended pregnancy. The role of PCPs in contraceptive decision making is to build strong patient relationships through heightened communication and trust.

Chernick et al., 2015 [29]	To identify barriers to and enablers of contraceptive use among adolescent females using the ED and determine their interest in an ED-based pregnancy prevention intervention	Semi-structured, open ended interviews in urban ED. QA: Strong	14 predominantly Hispanic 14–19-year-old sexually active females who present to urban ED with reproductive complaints and at risk for pregnancy (nonuse of effective contraception)	Identified barriers to contraception use include side effects, mistrust in contraceptives, limited access, pregnancy ambivalence and partner pregnancy desires as barriers to hormonal contraception use.
Desrosiers et al., 2013[13]	To examine contraceptive choices among Hispanic and non-Hispanic girls to determine if there are differences when the barrier of cost is removed.	retrospective chart review QA: Strong	666 patients, adolescent females aged 13-19 years, 27% Hispanic	Of the 390 subjects who chose contraception during their visit, Hispanic subjects, who represented 32% of the group, were more likely to choose condoms and oral contraceptive pills compared to non-Hispanic subjects.
Erickson, 1998 [30]	To investigate cultural and social factors affecting the initiation of sexual intercourse among Latina adolescent mothers (who gave birth before age 18 in Los Angeles).	Life history interviews with 40 young mothers and their partners. QA: Strong	40 young, low income, Hispanic women who had births before age of 18 and their partners (only 14) conducted in 1994-1997	The interviews suggest that for these young mothers, it was not really sex that was being negotiated, but the couple's entire relationship. "Rational" decision making regarding sex, contraception, and STD prevention could only become the norm for these young couples after they had been having intercourse for some time.

Galloway et al., 2017 [18]	To understand African American and Latino teens' preferences for finding health information, perceptions of accessing reproductive health services and beliefs and contraception.	8 Focus Groups in the Fall of 2012 with African American and Latino male and female youth in South Carolina QA: Strong	A total of 63 participants, African American and Hispanic youth age 15-19, participated in focus groups divided by gender and race/ethnicity	Teen concerns included confidentiality of reproductive health services, a desire for services that are private, friendly and welcoming. They also revealed inaccurate beliefs about the teens ability to consent to care without a parent's permission and about the use and effectiveness of birth control.
Gilliam et al., (2004) [11]	To understand factors influencing use and nonuse of contraception in young, low-income Latina adolescents through focus groups	Focus Group discussions with Latino females QA: Strong	40 Latina women between the ages of 18-26 who were recruited from an outpatient clinic in Chicago	There was complete consensus throughout the sessions regarding cultural and social influences prohibiting sex outside of marriage, admonishments against premarital sex appeared to be directed against women which contribute to contraception non-use. Following pregnancy participants had greater access to contraception and more resolve to use it.

Gilliam et al., 2011 [1]	To understand the factors influencing the use of effective methods of contraception in Latina adolescents and young adults as well as the relative psychosocial factors.	Face to face interviews were conducted to develop a survey instrument that was later given to participants QA: Strong	274 Non-pregnant Latina, predominantly Mexican females, between 13-25 years of age on the West side of Chicago	Study findings included the importance of tailoring messages to Latina adolescent and young adults to reduce unintended pregnancy. Interventions to improve effective contraceptive use among Latina adolescents should encourage effective forms of contraception combined with communication with their partners about birth control while considering acculturation.
Guilamo-Ramos et al, 2019 [38]	To explore maternal and adolescent perspectives on the involvement and role of Latino mothers in providing guidance regarding contraception use.	Focus Groups with adolescent-mother dyads (semi structured guides were used in focus groups) QA: Strong	21 mother-adolescent Latino dyads (n=42) (predominantly Puerto Rican and Dominican). Latino adolescents ages were 17-19 years	Results suggest asymmetric priorities and preferences with respect to maternal involvement in contraceptive decision making among older adolescents. Results demonstrate a missed opportunity for Latino mothers to support their older adolescent children to prevent unplanned pregnancies, STIs and HIV.
Kramer et al., 2018 [36]	To investigate influences (demographic, socioeconomic, race/ethnicity and reproductive health characteristics) on long-acting reversible contraceptive (LARC) use	Secondary Data Analysis with Data derived from 2011-2013 and 2013-2015 National Surveys of Family Growth (NSFG), using logistic regression analysis QA: Strong-moderate	9321 Non-Hispanic White, non-Hispanic Black, and Hispanic women of reproductive age (15-45) (11% Hispanic)	Similar patterns of LARC use were found by race/ethnicity. The experience of unintended pregnancy among whites and Hispanics predicted probability of LARC use

Mitchell et al., 2023 [31]	To compare contraceptive access experiences of pregnant and non-pregnant Mexican-origin youth in Mexico and California.	Focus groups, in-depth interviews and brief sociodemographic survey conducted in English and Spanish were used. QA: Strong	74 Pregnant or parenting Mexican-origin female youth from Mexico (n=49) and California (n=25) age 14-20 years.	In both locations participants described obstacles in accessing preferred contraception due to social, cultural and institutional dynamics. Participants worried about parental and peer opinions as well as side effects. Lack of knowledge about options was found in California participants.
Morales-Alemán et al., 2020 [32]	To examine young Latina women's perceptions and experiences of accessing sexual healthcare	Semi-structured qualitative interviews QA: Strong-moderate	20 young Latina women between the ages of 15-19 living in Alabama and in the US for $\geq 5$ years	Describe influences on accessing sexual healthcare based on the Socioecological Model of Sexual Health. Participants described barriers related to sociocultural influences including need for interpreters, transportation, feeling stereotyped; due to social relationships such as parental influences, and individual level embarrassment, stigma, or lack of awareness.
Norris & Ford, 1992 [33]	To identify condom beliefs that may influence intentions and use in young minority populations	Qualitative, face to face interviews, structured and with open-ended questions QA: moderate	64 African American and Hispanic (majority from Puerto Rico) adolescents (ages 15-21) (15 were Hispanic females)	Only 13% of Hispanic participants knew that nonlatex condoms do not provide effective protection. Condom use was inconsistent, with many describing negative experiences with condoms including condom breakage, slipping, reducing sensation; Hispanic females reported lower "thinking about condoms", 50% thought about using condoms

Waddell et al., 2010 [2]	To identify risk components such as race/ethnicity, neighborhood by modeling demographic difference, odds of recent sexual activity and birth control use	Data from the 2005 and 2007 New York City Youth Risk Behavior Surveys, (32.7% Hispanic), was analyzed to calculate overall pregnancy risk as it relates to race/ethnicity, grade level, age, borough and school neighborhood. QA: Strong-moderate	6,608 non-Hispanic Black, Hispanic and non-Hispanic - White teen girls in NYC public schools in 2005 and 2007	Hormonal contraception use was low in all groups. Compared with non-Hispanic Whites, Hispanic female students were less likely to report use of condoms, use of a hormonal method, or withdrawal method and had a 50% increased Pregnancy Risk Index. The Contraceptive Failure Rate (predicted annual number of pregnancies per 100 sexually active public high school females was significantly higher in Hispanic females compared with non-Hispanic whites
Wilson et al., (2011) [34]	To explore factors that influence adolescents' postpartum use of contraceptive	In-depth interviews QA: Strong	In-depth interviews with 21 black, white and Latina (n=7) adolescent first-time mothers (who gave birth between 13–17-year-old) from rural and urban areas of North Carolina	Contraceptive use increased after childbirth related to change in pregnancy attitudes and intentions, knowledge and access to contraception, improved parent communication.

210

211 **Facilitators and Barriers to Contraception Described by Category**

212 Through the data extraction and synthesis process, both the facilitators and barriers were  
 213 grouped into the following overarching categories: individual, interpersonal (family,  
 214 spouse/partner, friend), and healthcare provider levels; further, contextual matters emerged as an  
 215 additional category of barriers. Each of these main categories was further subdivided into



216 thematic subcategories as displayed in two sunburst charts, one for facilitators (Fig 2), and one  
217 for barriers (Fig 3). On both charts, the categories that resulted from the thematic analysis are  
218 visible in concentric rings with themes in the center and related subthemes on the periphery. The  
219 sizes of the parcels in each chart are proportional to the number of occurrences of that barrier or  
220 facilitator category across the 16 selected studies.

221 **Fig 2. Facilitators to Contraception.** Themes identified as facilitators to contraception use are  
222 displayed in the inner circle and are further differentiated into the subthemes located on the outer  
223 circle.

224 **Fig 3. Barriers to Contraception.** Themes identified as barriers to contraception use are  
225 displayed on the inner ring by with subthemes located on the outer ring.

## 226 **Category 1: Individual Level Facilitators and Barriers**

227 The most frequently mentioned individual facilitators were the clarity of intention to  
228 avoid pregnancy [11, 34, 35], and experience of pregnancy [1, 6, 28, 34, 36]. Additional  
229 facilitators identified were clear plans for the future [29], and more communication about  
230 contraception [8, 33].

231 The individual level barriers constituted a disproportional amount of the total barriers  
232 identified in this review with the number of data points nearly triple that of any other category.  
233 Individual barriers to contraception access were divided into five subthemes. The subthemes  
234 include beliefs/misconceptions, dislike of contraception, pregnancy risk perception, lack of  
235 knowledge, and lack of control. Specific factors that were most frequently described as barriers  
236 were side effects/perceived health risks [11, 18, 34], misconception regarding contraception or  
237 fertility [18, 29, 32], ambiguous or ambivalent desire for children [6, 11, 28, 29], lack of  
238 knowledge about options [11, 28, 30, 33-35], and male partner dominance [11, 29, 30, 35].

239 Across the five subthemes, dislike of contraception and beliefs/misconceptions were the most  
240 common. The first theme, ‘dislike of contraception’ was related to the side effects such as effects  
241 on menstruation, weight and future fertility and perceived health risks of contraception [11, 18,  
242 31, 34], that it decreases physical or emotional pleasure [18, 33], taboo [11, 30], fear of lack of  
243 confidentiality and reaction of others’ if they learn one is using contraception, uncertainty in  
244 selecting contraception [18, 29, 31], and negative past experience, such as condom breakage or  
245 slippage [29, 33].

246 Within the second theme, ‘beliefs/misconceptions’ there were descriptions of beliefs [18,  
247 28], such as “abortion is murder” [6, 28], and that contraception equals abortion, that withdrawal  
248 is effective if pregnancy is not desired [11], mistrust of the healthcare system [29, 35], and  
249 misconceptions regarding contraception and fertility [18, 29, 32].

250 The third theme, ‘pregnancy risk perception,’ encompasses several attitudes and beliefs,  
251 including the view that there is no risk of pregnancy [18, 28, 31], avoidance of condoms,  
252 perceiving them as protection against sexually transmitted infections rather than for pregnancy  
253 prevention [33], and ambiguous or actual desire for children [6, 11, 28, 29, 34].

254 Lack of knowledge and lack of control were the final two subthemes in this category.  
255 Participants described a lack of information about contraceptive options [11, 28, 30-35], feelings  
256 of embarrassment, stigma or lack of confidence accessing care [32, 34], and a lack of knowledge  
257 about biology and physiology [30]. Lack of control related to male partner dominance [11, 29,  
258 30, 35], reliance on the male partner for the withdrawal method [11], lack of control over  
259 pregnancy related to infertility beliefs, religious influence and feelings of invincibility [11, 18,  
260 28], uncertainty about the future [29], unplanned or unexpected intercourse [30, 34], and not  
261 considering condom use [33].

## 262 **Category 2: Interpersonal Level Facilitators and Barriers**

263 Interpersonal facilitators to contraception access included parent comfort in discussing  
264 sexual health [8, 32, 34], accompaniment and transportation to the doctor [32, 34], positive  
265 reinforcement from family, friends and schools [1, 8, 31, 35], mother/daughter alignment or  
266 parent support on sexual and reproductive health (SRH) [8, 32, 34], friends who have had  
267 positive experiences with contraception [29, 31], and mutual agreement with partners about not  
268 wanting a pregnancy [29].

269 Interpersonal barriers to contraception access were described as familial influences such  
270 as *familismo* (“a value that reflects individuals’ strong attachment and solidarity with their  
271 nuclear and extended families”) [6, 11], family dishonor [6, 11], cultural or familial beliefs  
272 prohibiting use of birth control [11, 18, 31, 32, 34], and sexual activity [11, 28, 30, 32], and  
273 misalignment of parent/daughter priorities [8, 11, 29, 32, 34].

274 Guilamo-Ramos et al. [8] and Morales-Alemán et al. [32] explored the vital role of the  
275 maternal and parent influence on the daughter’s SRH. The need for support was expressed by  
276 several teens “My mother doesn’t really understand .... If only my mom could get it and  
277 understand I could really use her support.” [8]. And “...I pretend I have never done it. That way,  
278 I can avoid a fight.” [8]. Morales-Alemán et al. [32] reported that the main barrier to accessing  
279 SRH services for most participants was parental disapproval of them having sex and using these  
280 services. While some mothers were supportive and proactive in pregnancy prevention for their  
281 teens, others were unsure, as one parent expressed, “Should I mention it? It’s really confusing  
282 and scary because there is so much I do not know. Nobody ever told me. I got pregnant early  
283 on.” [8]. These experiences reflect how the maternal influence can be either a facilitator or  
284 barrier to SRH uptake.

### 285 **Category 3: Healthcare Provider Barriers and Facilitators**

286 Characteristics of healthcare providers that facilitated access to contraception included  
287 patient-centered communication, nonjudgmental and non-discriminating interactions, and  
288 trustworthiness [29, 35]. Clinic features that facilitate access were providing privacy [18], having  
289 respectful office staff [29, 30], and being located in a school-based health clinic [29]. Healthcare  
290 provider barriers were low patient-rated communication [35], perceived discrimination [18, 32,  
291 35], or inadequate care given due to race [35].

### 292 **Category 4: Contextual Level Barriers to Contraception**

293 Contextual level influences on contraception were described in studies only as barriers  
294 (no facilitators were described) to contraception and categorized into cultural, religious,  
295 geographical, and practical influences. Culturally, sexual taboo or stigma [11, 30, 32, 39],  
296 placing a high value on virginity [6, 30], and valuing sexual ignorance and sexual passivity in  
297 women [30] are all barriers to contraception. Both religious objections to the use of  
298 contraception [1, 35] and neighborhood contexts that influence younger sexual initiation [2] were  
299 contextual influences that represented barriers to contraceptive access. One study by Carvajal et  
300 al. [35] described contradictory findings regarding the influence of religious ideology and norms.  
301 Norris & Ford [33] report a specific stigma found in their study: the perception that condoms are  
302 for unclean people. Practical matters that were barriers to contraception were loss of Medicaid  
303 and continuity of care (related to the end of pregnancy) [34], lack of time for a clinic visit [32],  
304 lack of public transit or transportation [29, 32], lack of insurance and cost [11, 32, 34], and need  
305 for interpreters [32]. Additionally, two studies reported that participants mentioned the negative  
306 influence of media and internet advertisements about contraception as inducing fear [18, 29].

### 307 **Discussion**

308           This analysis sought to better understand barriers and facilitators that influence access to  
309   and use of contraception in female Hispanic teens ages 13-17 years old. Sixteen studies were  
310   included, and 40 specific barriers and 16 facilitators were found and presented as subthemes. The  
311   facilitators that emerged from this analysis provide insight into potentially outcome-changing  
312   influences that support women’s reproductive autonomy, decision making, and acquisition of  
313   contraception.

314           Among barriers identified, sentiments such as “abortion is murder” or that contraception  
315   is equivalent to abortion [6, 28], and the belief that withdrawal will work if pregnancy is not  
316   desired [11] illustrates how ideology can intertwine with misconceptions leading to inaccurate  
317   perceptions about risk and risk management. These views, combined with barriers such as  
318   embarrassment, stigma and lack of confidence accessing care [32, 34] and lack of knowledge  
319   about biology and physiology [30], highlight the complex influences that make it challenging for  
320   teens to seek information and ask questions from reliable sources such as trusted adults and  
321   healthcare providers. This complexity can contribute to a sense of lack of control, exacerbated by  
322   male partner dominance (with age difference) [11, 29, 30, 35] and reliance on the male partner  
323   for the withdrawal method [11], and a lack of control over pregnancy due to beliefs about  
324   fertility, religious influences, and feelings of invincibility or the perception that ‘it won’t happen  
325   to me’ [11, 18, 28]. Interventions that inadequately address these barriers in meaningful ways  
326   may be less effective or ineffective.

327           In contrast, key facilitators include a clear intention to avoid pregnancy, parental comfort  
328   discussing sexual health, positive reinforcement from family, friends and school, and good  
329   communication and trust and respect from healthcare provider and their office staff. These are  
330   actionable items that warrant consideration in the development of future interventions.

## 331 **Implications**

### 332 **The Role of Sex Education and Experience**

333           When considering how an individual makes decisions regarding contraception,  
334 perception and understanding of risk and ease of mitigating risk are each important. This review  
335 demonstrated the different sources of influence ranging from individual beliefs to personal  
336 experience of pregnancy, to people who directly support and influence teens such as parents,  
337 peers, partners, and healthcare providers. Many of the barriers identified in this review are  
338 addressed in sex education classes in schools in the U.S. including misconceptions and lack of  
339 knowledge; yet, Hispanic students may receive less sex education because they are more likely  
340 to drop out of school [40] or move frequently, which may preclude them from receiving adequate  
341 sex education [6]. Even when Hispanic students receive sex education in school, the quality and  
342 content provided is inconsistent ranging from abstinence-only to comprehensive sex education  
343 leading to disparities in what is learned, and related outcomes [41]. These disparities contribute  
344 to socially driven health and systemic inequities for Hispanic teen pregnancy rates [41].

345           Parents, peers, partners, and healthcare providers can have a strong influence on  
346 contraception access and can serve as barriers or facilitators. Morales-Alemán's et al. [32]  
347 finding that parent disapproval of teens having sex was their main barrier to access to care for  
348 SRH, which indicates the importance of parent attitudes towards teen access to contraception as  
349 either a barrier [11, 32, 34] or facilitator [32]. Male partners can be barriers through male partner  
350 dominance and controlling withdrawal or facilitators through mutual agreement with partner  
351 about pregnancy intentions, positive reinforcement, providing contraception or supporting access  
352 to the healthcare providers. Healthcare providers are positioned to prime parents to be  
353 supportive of teen's access to care for SRH. They can also support teens independently by

354 providing care that is private, confidential, nonjudgmental, non-discriminatory, and patient-  
355 centered and in an accessible location.

356 Further research can build upon the findings presented here by discerning what  
357 meaningfully differentiates those who have adequate awareness of pregnancy risk and the ability  
358 to access contraception from those who do not. This may reveal the relative impact of different  
359 factors on teens, how these factors synergize to serve as barriers or facilitators, and patterns in  
360 how these influences affect teen contraceptive access and use. Understanding these dynamics  
361 may identify targeted strategies to reduce disparities in teen pregnancy.

## 362 **Limitations**

363 The studies included in this analysis grouped teens by the umbrella terms of ‘Hispanic’ or  
364 ‘Latina’ but there is considerable diversity and variation within this group. Though  
365 commonalities such as taboos, stigma, and misconceptions were found, it is unclear if more  
366 research across ethnic or national subgroups may reveal important differences. The presence of  
367 bias in the findings presented in this review cannot be ruled out as a single author [LB]  
368 conducted the literature search, assessed studies for inclusion, rated bias, extracted, analyzed,  
369 and synthesized the data. The search sought to identify studies about Hispanic teens but did not  
370 search all potential places of origin of Hispanics in the U.S. such as Mexican, Guatemalan,  
371 Puerto Rican, Columbian etc., so studies about those specific groups, while applicable, may not  
372 have been identified.

## 373 **Conclusion**

374 This integrative review sheds light on the barriers and facilitators to contraceptive access  
375 from the perspective of female Hispanic teens, aged 13-17 in the U.S. The synthesis of

376 perspectives and experiences revealed in this review is informative and significant, given the  
377 disparities in contraception access and pregnancy rates in this group. Identification of barriers  
378 and facilitators can stimulate discussion and research aimed at improving the delivery of  
379 education and healthcare to meet the contraceptive needs of female Hispanic teens. The  
380 implications presented here underscore the importance of addressing the unique multilevel  
381 barriers and leveraging facilitators encountered by this population to promote health equity and  
382 improve access to contraception.

## 383 **References**

- 384 1. Gilliam ML, Neustadt A, Whitaker A, Kozloski M. Familial, cultural and psychosocial  
385 influences of use of effective methods of contraception among Mexican-American adolescents  
386 and young adults. *J Pediatr Adolesc Gynecol*. 2011;24(2):79-84. Epub 20101203. doi:  
387 10.1016/j.jpag.2010.10.002. PubMed PMID: 21126893; PubMed Central PMCID:  
388 PMCPMC5145289.
- 389 2. Waddell EN, Orr MG, Sackoff J, Santelli JS, Waddell EN, Orr MG, et al. Pregnancy risk  
390 among black, white, and Hispanic teen girls in New York City public schools. *Journal of Urban*  
391 *Health*. 2010;87(3):426-39. doi: 10.1007/s11524-010-9454-4. PubMed PMID: 105203990.  
392 Language: English. Entry Date: 20100924. Revision Date: 20200708. Publication Type: journal  
393 article.
- 394 3. Caudillo ML, Hickman SN, Simpson SS. Racial and Ethnic Differences in the  
395 Relationship Between Risk-Taking and the Effectiveness of Adolescents' Contraceptive Use.  
396 *Perspect Sex Reprod Health*. 2020;52(4):253-64. Epub 20201228. doi: 10.1363/psrh.12165.  
397 PubMed PMID: 33372342; PubMed Central PMCID: PMCPMC10506860.
- 398 4. Martin JA, Hamilton BE, Osterman MJK, Driscoll AK. Births: Final Data for 2019. *Natl*  
399 *Vital Stat Rep*. 2021;70(2):1-51. PubMed PMID: 33814033.
- 400 5. Coyne CA, D'Onofrio BM. Some (but not much) progress toward understanding teenage  
401 childbearing: a review of research from the past decade. *Adv Child Dev Behav*. 2012;42:113-52.  
402 doi: 10.1016/b978-0-12-394388-0.00004-6. PubMed PMID: 22675905; PubMed Central  
403 PMCID: PMCPMC3654402.
- 404 6. Barral RL, Cartujano B, Perales J, Ramirez M, Cowden JD, Trent ME, et al. Knowledge,  
405 beliefs, and attitudes about contraception among rural Latino adolescents and young adults. *J*  
406 *Rural Health*. 2020;36(1):38-47. Epub 2019/08/21. doi: 10.1111/jrh.12390. PubMed PMID:  
407 31430396.
- 408 7. Johnson R, Nshom M, Nye AM, Cohall AT. There's always Plan B: adolescent  
409 knowledge, attitudes and intention to use emergency contraception. *Contraception*.  
410 2010;81(2):128-32. Epub 2010/01/28. doi: 10.1016/j.contraception.2009.08.005. PubMed PMID:  
411 20103450.



- 412 8. Guilamo-Ramos V, Bowman AS, Benzekri A, Ruiz Y, Beltran O. Misalignment of  
413 sexual and reproductive health priorities among older Latino adolescents and their mothers.  
414 *Contraception*. 2019;99(3):179-83. Epub 2018/11/25. doi: 10.1016/j.contraception.2018.11.011.  
415 PubMed PMID: 30471265.
- 416 9. Center for Disease Control and Prevention. Unintended Pregnancy. March 27, 2023.
- 417 10. Manlove J, Ryan S, Franzetta K. Patterns of contraceptive use within teenagers' first  
418 sexual relationships. *Perspect Sex Reprod Health*. 2003;35(6):246-55. doi:  
419 10.1363/psrh.35.246.03. PubMed PMID: 14744656; PubMed Central PMCID:  
420 PMCPMC1473988.
- 421 11. Gilliam ML, Warden MM, Tapia B. Young Latinas recall contraceptive use before and  
422 after pregnancy: a focus group study. *J Pediatr Adolesc Gynecol*. 2004;17(4):279-87. Epub  
423 2004/08/04. doi: 10.1016/j.jpag.2004.05.003. PubMed PMID: 15288030.
- 424 12. Dehlendorf C, Park SY, Emeremni CA, Comer D, Vincett K, Borrero S. Racial/ethnic  
425 disparities in contraceptive use: variation by age and women's reproductive experiences. *Am J*  
426 *Obstet Gynecol*. 2014;210(6):526.e1-9. Epub 20140201. doi: 10.1016/j.ajog.2014.01.037.  
427 PubMed PMID: 24495671; PubMed Central PMCID: PMCPMC4303233.
- 428 13. Desrosiers F, Arden M, Fisher M. Patterns of contraception choice among Hispanic and  
429 non-Hispanic female adolescents. *Int J Adolesc Med Health*. 2013;25(2):167-70. Epub  
430 2013/01/22. doi: 10.1515/ijamh-2013-0025. PubMed PMID: 23334055.
- 431 14. Hall KS. The Health Belief Model can guide modern contraceptive behavior research and  
432 practice. *J Midwifery Womens Health*. 2012;57(1):74-81. Epub 20111215. doi: 10.1111/j.1542-  
433 2011.2011.00110.x. PubMed PMID: 22251916; PubMed Central PMCID: PMCPMC3790325.
- 434 15. Office of Disease Prevention and Health Promotion. Access to health services. n.d.
- 435 16. Levesque JF, Harris MF, Russell G. Patient-centred access to health care: conceptualising  
436 access at the interface of health systems and populations. *Int J Equity Health*. 2013;12:18. Epub  
437 20130311. doi: 10.1186/1475-9276-12-18. PubMed PMID: 23496984; PubMed Central PMCID:  
438 PMCPMC3610159.
- 439 17. Swan LET. The impact of US policy on contraceptive access: a policy analysis. *Reprod*  
440 *Health*. 2021;18(1):235. Epub 20211122. doi: 10.1186/s12978-021-01289-3. PubMed PMID:  
441 34809673; PubMed Central PMCID: PMCPMC8607408.
- 442 18. Galloway CT, Duffy JL, Dixon RP, Fuller TR. Exploring African-American and Latino  
443 Teens' Perceptions of Contraception and Access to Reproductive Health Care Services. *Journal*  
444 *of Adolescent Health*. 2017;60:S57-S62. doi: 10.1016/j.jadohealth.2016.12.006. PubMed PMID:  
445 121275111. Language: English. Entry Date: 20170222. Revision Date: 20180530. Publication  
446 Type: Article.
- 447 19. Singh JA, Siddiqi M, Parameshwar P, Chandra-Mouli V. World Health Organization  
448 Guidance on Ethical Considerations in Planning and Reviewing Research Studies on Sexual and  
449 Reproductive Health in Adolescents. *J Adolesc Health*. 2019;64(4):427-9. doi:  
450 10.1016/j.jadohealth.2019.01.008. PubMed PMID: 30904091; PubMed Central PMCID:  
451 PMCPMC6496912.
- 452 20. Magnusson BM, Crandall A, Evans K. Early sexual debut and risky sex in young adults:  
453 the role of low self-control. *BMC Public Health*. 2019;19(1):1483. Epub 20191108. doi:  
454 10.1186/s12889-019-7734-9. PubMed PMID: 31703650; PubMed Central PMCID:  
455 PMCPMC6839049.
- 456 21. Aragones A, Hayes SL, Chen MH, González J, Gany FM. Characterization of the  
457 Hispanic or latino population in health research: a systematic review. *J Immigr Minor Health*.

- 458 2014;16(3):429-39. doi: 10.1007/s10903-013-9773-0. PubMed PMID: 23315046; PubMed  
459 Central PMCID: PMCPMC4518558.
- 460 22. Lopez M, Krogstad J, Passel J. Who is Hispanic? September 5, 2023.
- 461 23. Jain R, Muralidhar S. Contraceptive methods: needs, options and utilization. *J Obstet*  
462 *Gynaecol India*. 2011;61(6):626-34. Epub 20120214. doi: 10.1007/s13224-011-0107-7. PubMed  
463 PMID: 23204678; PubMed Central PMCID: PMCPMC3307935.
- 464 24. Whittemore R, Knafl K. The integrative review: updated methodology. *J Adv Nurs*.  
465 2005;52(5):546-53. doi: 10.1111/j.1365-2648.2005.03621.x. PubMed PMID: 16268861.
- 466 25. Hong QN, Gonzalez-Reyes A, Pluye P. Improving the usefulness of a tool for appraising  
467 the quality of qualitative, quantitative and mixed methods studies, the Mixed Methods Appraisal  
468 Tool (MMAT). *J Eval Clin Pract*. 2018;24(3):459-67. Epub 20180221. doi: 10.1111/jep.12884.  
469 PubMed PMID: 29464873.
- 470 26. Page MJ, McKenzie JE, Bossuyt PM, Boutron I, Hoffmann TC, Mulrow CD, et al. The  
471 PRISMA 2020 statement: an updated guideline for reporting systematic reviews. *Syst Rev*.  
472 2021;10(1):89. Epub 20210329. doi: 10.1186/s13643-021-01626-4. PubMed PMID: 33781348;  
473 PubMed Central PMCID: PMCPMC8008539.
- 474 27. Thomas J, Harden A. Methods for the thematic synthesis of qualitative research in  
475 systematic reviews. *BMC Med Res Methodol*. 2008;8:45. Epub 20080710. doi: 10.1186/1471-  
476 2288-8-45. PubMed PMID: 18616818; PubMed Central PMCID: PMCPMC2478656.
- 477 28. Becerra RM, de Anda D. Pregnancy and motherhood among Mexican American  
478 adolescents. *Health Soc Work*. 1984;9(2):106-23. Epub 1984/01/01. doi: 10.1093/hsw/9.2.106.  
479 PubMed PMID: 6724424.
- 480 29. Chernick LS, Schnall R, Higgins T, Stockwell MS, Castaño PM, Santelli J, Dayan PS.  
481 Barriers to and enablers of contraceptive use among adolescent females and their interest in an  
482 emergency department based intervention. *Contraception*. 2015;91(3):217-25. Epub 2014/12/17.  
483 doi: 10.1016/j.contraception.2014.12.003. PubMed PMID: 25499588; PubMed Central PMCID:  
484 PMCPMC4352549.
- 485 30. Erickson PI. Cultural factors affecting the negotiation of first sexual intercourse among  
486 Latina adolescent mothers. *International Quarterly of Community Health Education*.  
487 1998;18(1):121-37. PubMed PMID: 107176677. Language: English. Entry Date: 19990401.  
488 Revision Date: 20150711. Publication Type: Journal Article.
- 489 31. Mitchell A, Gutmann-Gonzalez A, Brindis CD, Decker MJ. Contraceptive access  
490 experiences and perspectives of Mexican-origin youth: a binational qualitative study. *Sex Reprod*  
491 *Health Matters*. 2023;31(1):2216527. doi: 10.1080/26410397.2023.2216527. PubMed PMID:  
492 37335382; PubMed Central PMCID: PMCPMC10281292.
- 493 32. Morales-Alemán MM, Ferreti G, Scarinci IC. "I don't like being stereotyped, I decided I  
494 was never going back to the doctor": Sexual healthcare access among young Latina women in  
495 Alabama. *J Immigr Minor Health*. 2020;22(4):645-52. doi: 10.1007/s10903-019-00932-3.  
496 PubMed PMID: 31535273; PubMed Central PMCID: PMCPMC7078038.
- 497 33. Norris AE, Ford K. Beliefs about condoms and accessibility of condom intentions in  
498 Hispanic and African American youth. *Hisp J Behav Sci*. 1992;14(3):373-82. Epub 1992/08/01.  
499 doi: 10.1177/07399863920143007. PubMed PMID: 12345005.
- 500 34. Wilson EK, Samandari G, Koo HP, Tucker C. Adolescent mothers' postpartum  
501 contraceptive use: a qualitative study. *Perspect Sex Reprod Health*. 2011;43(4):230-7. Epub  
502 2011/12/14. doi: 10.1363/4323011. PubMed PMID: 22151510.

- 503 35. Carvajal DN, Gioia D, Mudafort ER, Brown PB, Barnet B. How can Primary Care  
504 Physicians Best Support Contraceptive Decision Making? A Qualitative Study Exploring the  
505 Perspectives of Baltimore Latinas. *Womens Health Issues*. 2017;27(2):158-66. Epub 2016/11/09.  
506 doi: 10.1016/j.whi.2016.09.015. PubMed PMID: 27825590.
- 507 36. Kramer RD, Higgins JA, Godecker AL, Ehrenthal DB. Racial and ethnic differences in  
508 patterns of long-acting reversible contraceptive use in the United States, 2011-2015.  
509 *Contraception*. 2018;97(5):399-404. Epub 20180210. doi: 10.1016/j.contraception.2018.01.006.  
510 PubMed PMID: 29355492; PubMed Central PMCID: PMC5965256.
- 511 37. Barral RL, Cartujano B, Perales J, Ramirez M, Cowden J, Trent M, et al. Knowledge,  
512 beliefs, and attitudes about contraception among rural Latino adolescents and young adults. *The*  
513 *Journal of Rural Health*2020. p. 38-47.
- 514 38. Guilamo-Ramos VB, A. S.: Benzekri, A.: Ruiz, Y.: Beltran, O. Misalignment of sexual  
515 and reproductive health priorities among older Latino adolescents and their mothers.  
516 *Contraception*. 2019;99(3):179-83. Epub 2018/11/25. doi: 10.1016/j.contraception.2018.11.011.  
517 PubMed PMID: 30471265.
- 518 39. Barral RL, Cartujano B, Cupertino AP, Trent M. “Birth control is like having an abortion:  
519 Attitudes, beliefs and knowledge about sex and contraception among Latino youth in rural  
520 kansas”. *Journal of Adolescent Health*. 2015;56(2):S39. doi: 10.1016/j.jadohealth.2014.10.079.
- 521 40. Patel PR, Lee J, Hirth J, Berenson AB, Smith PB. Changes in the Use of Contraception at  
522 First Intercourse: A Comparison of the National Survey of Family Growth 1995 and 2006-2010  
523 Databases. *J Womens Health (Larchmt)*. 2016;25(8):777-83. Epub 2016/02/27. doi:  
524 10.1089/jwh.2015.5513. PubMed PMID: 26919078; PubMed Central PMCID:  
525 PMC4982959.
- 526 41. American Academy of Pediatrics. The importance of access to comprehensive sex  
527 education. February 15, 2024.
- 528

# Prisma Flow Diagram

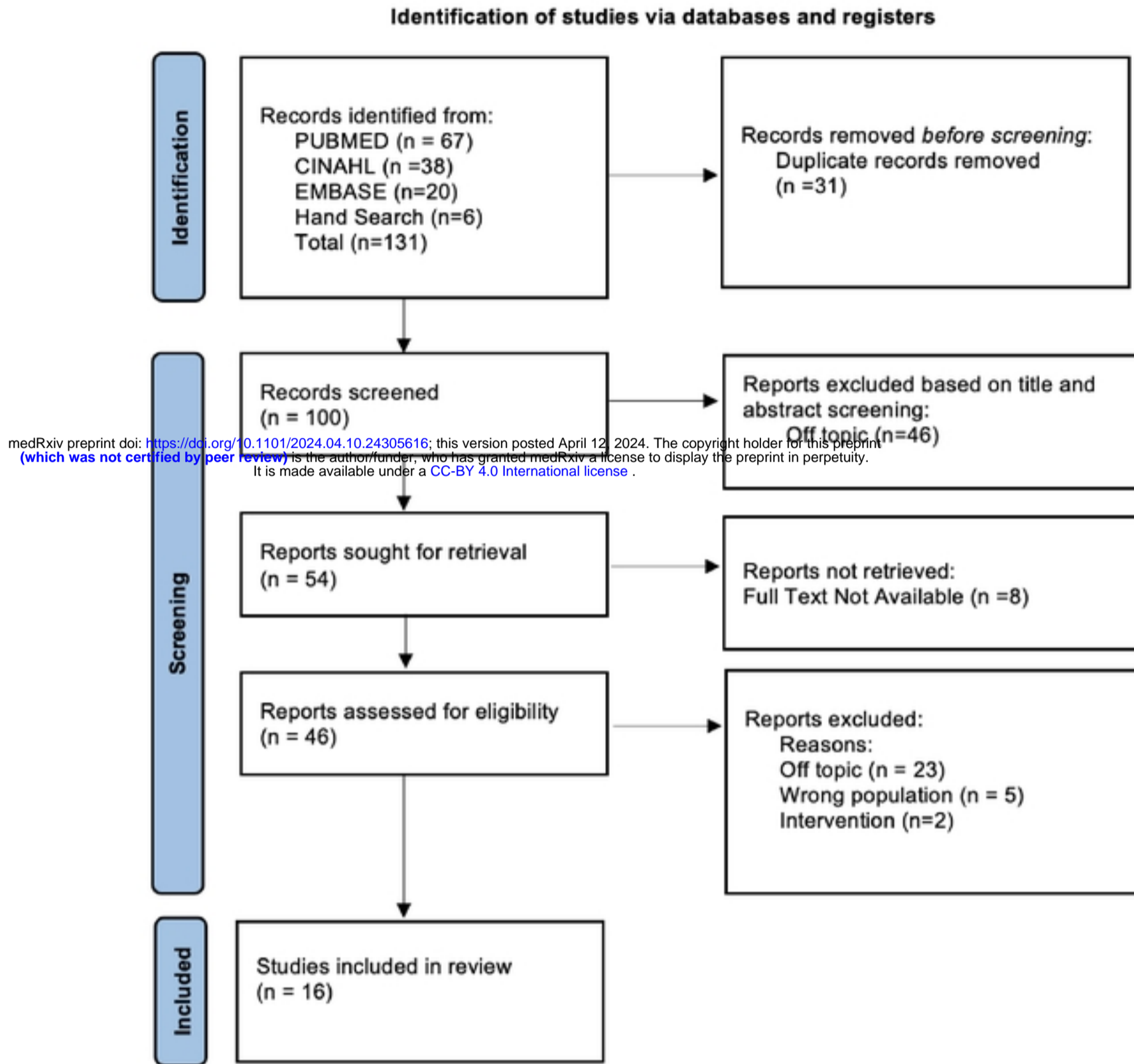
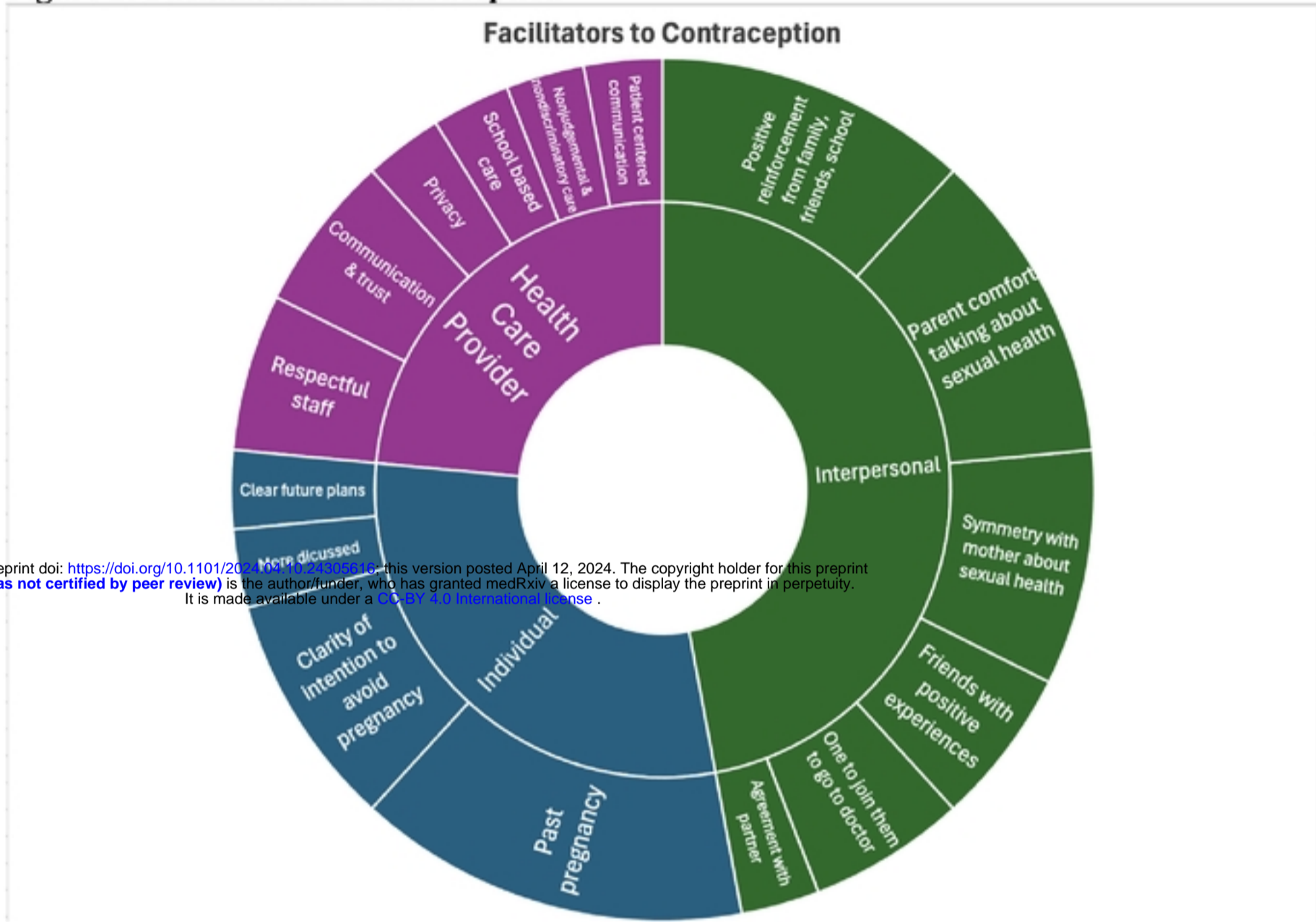


Figure 1

**Figure 2: Facilitators to Contraception**



medRxiv preprint doi: <https://doi.org/10.1101/2024.04.12.24305616>; this version posted April 12, 2024. The copyright holder for this preprint (which was not certified by peer review) is the author/funder, who has granted medRxiv a license to display the preprint in perpetuity. It is made available under a [CC-BY 4.0 International license](https://creativecommons.org/licenses/by/4.0/).

**Figure 3: Barriers to Contraception**

