

# **C9orf72 repeat expansions modify risk for secondary motor and cognitive-behavioral symptoms in behavioral-variant frontotemporal degeneration and amyotrophic lateral sclerosis**

Barbara E. Spencer,<sup>1</sup> Sharon X. Xie,<sup>2</sup> Lauren B. Elman,<sup>1</sup> Colin C. Quinn,<sup>1</sup> Defne Amado,<sup>1</sup> Michael Baer,<sup>1</sup> Edward B. Lee,<sup>2</sup> Vivianna Van Deerlin,<sup>2</sup> Laynie Dratch,<sup>1</sup> Lauren Massimo,<sup>1</sup> David J. Irwin,<sup>1</sup> and Corey T. McMillan<sup>1</sup>

## **Abstract**

In behavioral-variant frontotemporal degeneration (bvFTD) and amyotrophic lateral sclerosis (ALS), the presence of secondary motor or cognitive-behavioral symptoms, respectively, is associated with shorter survival. However, factors influencing the risk and hazard of secondary symptom development remain largely unexplored.

We performed a retrospective evaluation of the entire disease course of individuals with amyotrophic lateral sclerosis (n=172) and behavioral-variant frontotemporal degeneration (n=69). Only individuals who had neuropathological confirmation of a TDP-43 proteinopathy at autopsy or had a C9orf72 repeat expansion were included for analysis. We examined the odds and hazard of secondary symptom development and assessed whether they were modified by the presence of a C9orf72 repeat expansion or initial clinical syndrome.

Binary logistic regression and Cox proportional hazard analyses revealed increased odds (OR=4.25 [1.97-9.14]; p<0.001) and an increased hazard (HR= 4.77 [2.33- 9.79], p<0.001) for developing secondary symptoms in C9orf72 expansion carriers compared to noncarriers. Initial clinical syndrome (bvFTD or ALS), age at symptom onset, and sex were not associated with development of secondary motor or cognitive-behavioral symptoms.

These findings highlight the need for clinician vigilance to detect the onset of secondary motor symptoms and cognitive-behavioral in patients carrying a C9orf72 repeat expansion, regardless of initial clinical syndrome, and may warrant dual referrals between cognitive and neuromuscular clinics in these cases.

**Author affiliations:**

1 Department of Neurology, University of Pennsylvania; 3400 Spruce St, Philadelphia, PA 19104, USA.

2 Department of Pathology and Laboratory Medicine, University of Pennsylvania; 3400 Spruce St, Philadelphia, PA 19104, USA.

Correspondence to: Corey T. McMillan

Richards Laboratories  
3700 Hamilton Walk  
Suite 601 B  
Philadelphia, PA, 19104

[cmcmilla@pennmedicine.upenn.edu](mailto:cmcmilla@pennmedicine.upenn.edu)

**Running title:** ALS-FTD secondary symptom development

**Keywords:** epidemiology, amyotrophic lateral sclerosis, frontotemporal degeneration, dementia

## Introduction

Frontotemporal degeneration (FTD) and amyotrophic lateral sclerosis (ALS) are multi-system disorders that occur along a spectrum of cognitive-behavioral and neuromuscular impairments, respectively.<sup>1</sup> Pathologic, genetic, and clinical features support the existence of this clinicopathologic spectrum. First, TAR DNA-binding protein ~43kDa (TDP-43) inclusions are the pathological hallmark of approximately 50% of FTD and the vast majority (>98%) of ALS cases.<sup>2</sup> Second, hexanucleotide repeat expansions of *C9orf72*<sup>3,4</sup> can cause FTD, ALS, or both, and account for ~5% of sporadic and one-third of familial FTD and ALS cases.<sup>5,6</sup> Third, clinical overlap between FTD and ALS can occur, even in the absence of a *C9orf72* repeat expansion, though estimates of the relative frequency of secondary symptom development vary widely.

In both FTD and ALS, the presence of secondary motor or cognitive-behavioral symptoms respectively, is associated with shorter survival.<sup>7-10</sup> Therefore, understanding the risk of secondary symptoms within FTD and ALS is critical yet factors influencing the risk of secondary symptom development remain largely unexplored.

Previous studies estimate that ~9-15% of individuals with ALS eventually develop frank FTD, though 30-50% develop some level of cognitive impairment,<sup>1,11-15</sup> and recently using appropriate normative data we established ~15% of individuals with ALS have cognitive impairment.<sup>16</sup> Likewise, ~4-14% of individuals with FTD develop a secondary motor impairment consistent with ALS<sup>17-20</sup> and latent evidence of neuromuscular impairment is rarely assessed. Estimates of secondary motor or cognitive-behavioral symptom development specifically in *C9orf72* repeat expansion carriers vary widely (~11-60%).<sup>3,21-25</sup> It is difficult to compare estimates across studies which use different criteria to determine the presence of secondary symptoms. However, in several studies that directly compare *C9orf72* repeat expansion carriers to noncarriers, a higher frequency of secondary symptom development has been reported in individuals with *C9orf72* repeat expansions (23-50%) compared to noncarriers (4-12%).<sup>26-28</sup> However, research limited to genetically defined individuals with known TDP-43 mutations likely overestimate concomitant FTD and ALS.

A further major limitation of prior research evaluating secondary symptom development in FTD and ALS is the reliance on clinically- rather than neuropathologically-defined cases. ALS is extraordinarily rare in FTD due to underlying tau pathology, which accounts for nearly half of all FTD cases and is not easily clinically differentiated from FTD due to

underlying TDP-43. Then, secondary ALS in FTD is likely underestimated when individuals without an underlying TDP-43 proteinopathy are included in risk models.

Recent evidence suggests that the risk of developing secondary ALS in individuals with an initial presentation of FTD decreases with time from FTD symptom onset.<sup>27</sup> However, we are unaware of studies evaluating the hazard of secondary symptom development over the disease course, which is an important consideration for patient prognostication. Further, the hazard of secondary symptom development stratified by initial clinical syndrome, FTD or ALS, has not yet been explored.

In this study, we examine whether the presence of a *C9orf72* repeat expansion is associated with increased risk of secondary symptom development in individuals with ALS, excluding SOD1 point mutation carriers lacking TDP-43 pathology, and in individuals with behavioral variant FTD (bvFTD), limited to those with neuropathological confirmation of a TDP-43 proteinopathy at autopsy or *C9orf72* repeat expansion carriers. We focus our analyses on bvFTD since this is the most commonly observed FTD phenotype in concomitant FTD and ALS. We further ask whether the risk of secondary symptom development is modified by the initial clinical syndrome, bvFTD or ALS, beyond *C9orf72* repeat expansion status. Using a targeted, retrospective evaluation of patients with a confirmed TDP-43 proteinopathy who were followed clinically from initial diagnosis until death, we are able to assess the presence or absence of secondary symptom development through the entire disease course.

## Materials and methods

### Participants

We retrospectively evaluated data from 241 deceased individuals from the University of Pennsylvania Integrated Neurodegenerative Disease Database.<sup>29</sup>

Inclusion was limited to individuals with:

- 1) An initial clinical diagnosis of ALS or bvFTD by a board-certified neurologist according to published clinical diagnostic criteria<sup>16,17</sup>, and
- 2) Complete records for date of birth, date of symptom onset for the initial clinical syndrome, and date of death, and

- 3) Blood DNA or postmortem frozen brain tissue screened for presence or absence of a *C9orf72* repeat expansion (see *Genetic sequencing*), and
- 4) Neuropathological confirmation of a TDP-43 proteinopathy at autopsy (see *Neuropathological evaluation*) OR the presence of a *C9orf72* repeat expansion,
- 5) Chart review

Two qualified reviewers performed a retrospective chart review of all available electronic and paper health records for each individual. Each reviewer independently assessed each case and recorded the presence or absence of secondary symptoms during disease course and, if present, the date of symptom onset of secondary symptoms. Secondary symptoms were defined as any clinical evidence of motor impairment in an individual with an initial clinical diagnosis of bvFTD or any clinical evidence of cognitive-behavioral impairment in an individual with initial clinical diagnosis of ALS. When month was not determinable the default of January was used, and when day was not determinable the first of the month was used. Discrepancies between reviewers were reconciled by a third reviewer. Time to secondary symptom development was calculated as the difference in months between the date of symptom onset of the initial clinical syndrome and the date of symptom onset of secondary symptoms.

## **Genetic sequencing**

DNA was extracted from peripheral blood or frozen brain tissue following the manufacturer's protocols (QuickGene DNA whole blood kit (Autogen) for blood, and QIAamp DNA Mini Kit (Qiagen) for brain tissue). All individuals were tested for *C9orf72* hexanucleotide repeat expansions using a modified repeat-primed PCR as previously described.<sup>30</sup> Cases were defined as carrying a *C9orf72* expansion if >30 hexanucleotide repeats were identified.

## **Neuropathological evaluation**

Detailed neuropathological assessments were performed using established and uniform methods of fixation, tissue processing, IHC with well-characterized antibodies, and current neuropathological criteria, as has been described in detail elsewhere.<sup>29,31,32</sup> Briefly, 15 brain regions from one hemisphere, alternating right and left at random, are routinely sampled at autopsy, formalin-fixed, and processed for immunohistochemical staining using 1D3 for phosphorylated TDP-43.

## Statistical approach

We first assessed the effect of *C9orf72* expansion status (carrier or noncarrier) and initial clinical syndrome (bvFTD or ALS) on the odds of developing secondary symptoms at any point from symptom onset of the initial clinical syndrome until death using binary logistic regression, controlling for age at initial clinical syndrome onset and sex. We next assessed the effect of *C9orf72* expansion status, alone and in combination with initial clinical syndrome on secondary symptom development using a time-to-event model. Kaplan-Meier survival curves were used to determine survival time without secondary symptom development, defined as the time after symptom onset of the initial clinical syndrome during which an individual did not develop secondary symptoms. Cox proportional hazard analyses, controlling for age at initial clinical syndrome onset and sex, were used to examine the influence of *C9orf72* expansion status, alone and in combination with initial clinical syndrome, on secondary symptom development. The proportional hazards assumption was tested for each Cox regression model fit.<sup>33</sup>

## Data availability

Data requests can be completed through the Penn Neurodegenerative Data Sharing Committee webform: <https://www.pennbindlab.com/data-sharing>

## Results

### Secondary phenotype development

69 individuals with initial bvFTD (32 (46%) *C9orf72* expansion carriers and 37 (54%) noncarriers) and 172 individuals with initial ALS (68 (40%) *C9orf72* expansion carriers and 104 (60%) noncarriers) were included in the study. Demographic, clinical, and genetic characteristics for all individuals are summarized in Table 1. Of the 69 individuals with initial bvFTD, 16 (23%) developed secondary motor symptoms. Of the 172 individuals with initial ALS, 23 (13%) developed secondary cognitive-behavioral symptoms.

## Logistic regression

Binary logistic regression revealed increased odds of developing secondary symptoms in *C9orf72* carriers relative to noncarriers (OR=4.25 [1.97-9.14];  $p < 0.001$ ). Initial clinical syndrome (bvFTD or ALS) was not associated with the odds of developing secondary symptoms (OR=0.55 [0.26-1.17];  $p = 0.12$ ). Neither age at initial clinical syndrome onset (OR=0.97 [0.94-1.01]  $p = 0.18$ ) nor sex (OR=0.62 [0.30-1.28];  $p = 0.20$ ) contributed to the odds of developing secondary symptoms.

## Cox proportional hazards

*C9orf72* carriers had an increased risk for developing secondary symptoms compared to noncarriers (HR= 4.77 [95% CI 2.33- 9.79],  $p < 0.001$ ). In *C9orf72* carriers, the median time after symptom onset of the initial clinical syndrome that an individual developed secondary symptoms was 120 months [range of secondary symptom onset 1-170 months]. The median survival time without secondary symptom development was unable to be estimated in *C9orf72* noncarriers due to the infrequent development of secondary symptoms in this group. Kaplan-Meier survival curves, stratified by *C9orf72* repeat expansion status alone or in combination with with initial clinical syndrome are displayed in Figure 1. In combination with *C9orf72* carrier status, initial clinical syndrome was not associated with the hazard for developing secondary symptoms (HR=1.18 [95% CI 0.59-2.36],  $p = 0.65$ ). Neither age at initial clinical syndrome onset (HR= .99 [95% CI range across models .95-1.02]) nor sex (HR=.68 [95% CI range across models 0.36-1.28]) were associated with the hazard for developing secondary symptoms in either model.

## Discussion

All individuals with an initial clinical diagnosis of bvFTD or ALS with an underlying TDP-43 proteinopathy are at risk for developing secondary cognitive-behavioral or motor symptoms, respectively, but this risk is heightened for *C9orf72* repeat expansion carriers. Regardless of genetic status, there is a modest risk for the development of secondary symptoms in the first year after symptom onset of the initial clinical syndrome, with 7.0% of *C9orf72* expansion carriers and 4.3% of noncarriers developing secondary symptoms in this timeframe. However, by death, 28.0% of *C9orf72* expansion carriers develop secondary symptoms compared to only 7.8% of noncarriers, in line with previous estimates.<sup>26-28</sup> In our

sample, the probability of noncarriers remaining free of secondary symptoms drops to only .93 at 30 months after symptom onset of the initial clinical syndrome and then to .87 at 114 months, after which there is no observed development of secondary symptoms in any individual. However, the probability of *C9orf72* expansion carrier remaining free of secondary symptoms drops to 0.5 by 120 months. While some studies report a median interval of less than one year between the onset of the initial clinical syndrome and secondary symptoms in *C9orf72* expansion carriers, we observed a median of 2 years.<sup>34</sup> We further observed two *C9orf72* expansion carriers who develop secondary symptoms 10+ years after symptom onset of the initial clinical syndrome, similar to some previously reported intervals.<sup>35</sup>

In this study, we found that survival without secondary symptom development did not differ by initial clinical syndrome, bvFTD or ALS. The presence of secondary symptom development was associated with a shorter interval between symptom onset of the initial clinical syndrome and death for both initial bvFTD and ALS, aligning with previous research.<sup>7-10</sup> Further, the time between symptom onset of the initial clinical syndrome and death was shortest for individuals with initial ALS, with or without secondary symptom development, aligning with prior work that found that long-term survivors in the FTD-ALS spectrum were more likely to be individuals with cognitive symptoms at onset.<sup>36</sup> However, this difference was only significant compared to individuals with initial bvFTD who did not develop secondary motor symptoms. We also observed a younger age at onset of cognitive-behavioral symptoms for individuals with initial bvFTD who develop secondary motor symptoms than those who never develop secondary symptoms.

Future studies are necessary to determine a biological explanation for why individuals carrying a *C9orf72* repeat expansion have a higher risk for developing secondary symptoms relative to noncarriers despite sharing common underlying TDP-43 pathology. Further, as most (~90-95%) ALS and FTD cases are considered sporadic, despite secondary symptom development being a lower probability event in these individuals, more *C9orf72* noncarriers than carriers may ultimately develop secondary symptoms and studies are needed to elucidate risk factors in this population.<sup>37-39</sup>

As with all epidemiological studies there are several caveats to consider in our approach. In order to ensure TDP-43 pathology in this study, we relied on neuropathological confirmation, which necessitated a retrospective evaluation of cases. One should consider any potential



sources of bias introduced by our primary focus on individuals who participated in brain donation, who tend to be more educated and non-representative of the population per se. Further, we only included individuals with bvFTD, but future work should evaluate secondary language and other cognitive domain impairment in ALS beyond motor impairment. Prospective collection of both reported symptom onset as well as detailed electrophysiological support and neuropsychological testing would strengthen the study. It is also necessary for future studies to address other potential modifiers of risk for concomitant cognitive-behavioral and motor impairment such as cognitive and motor reserve factors<sup>40</sup> and other environmental<sup>41</sup> and genetic<sup>42,43</sup> modifiers.

These findings should encourage clinicians to have elevated vigilance for the onset of secondary cognitive-behavioral and motor symptoms in patients carrying a *C9orf72* repeat expansion regardless of initial clinical syndrome and warrant dual referrals between cognitive and neuromuscular clinics. Early work likely failed to observe an association between secondary symptoms and survival in ALS due to a focus on memory rather than FTD-like cognitive/behavioral impairment.<sup>12</sup> Therefore, it is critical to properly evaluate these cases. This information may also be helpful for patients and families in terms of prognosis and understanding the implications of a *C9orf72* expansion in their family.

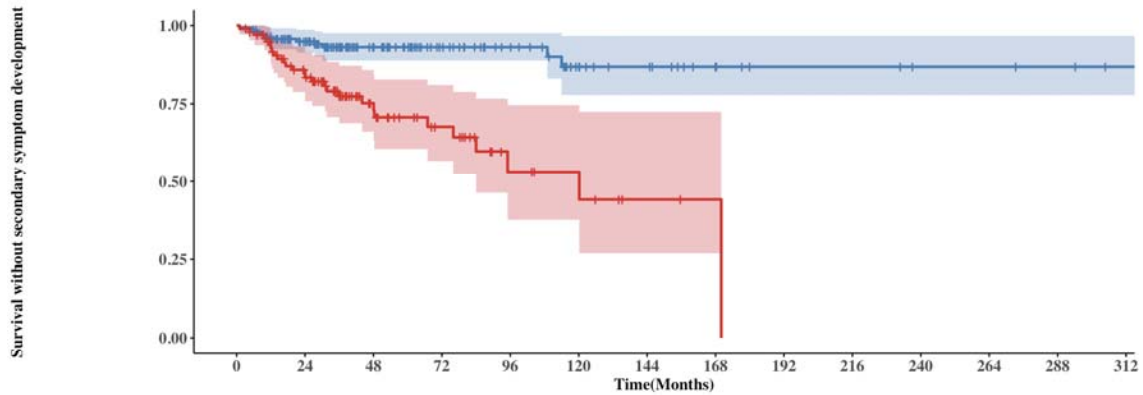
**Table 1 Sample Characteristics.** Demographic, clinical, and genetic data for all individuals, split by initial clinical syndrome (bvFTD or ALS) and the presence of secondary motor (bvFTD+Motor) or cognitive-behavioral (ALS+Cog) symptoms.

	ALS	ALS+Cog	bvFTD	bvFTD+Motor
<b>n</b>	149	23	53	16
<b>Sex (Male, %)</b>	91 ( 61.1)	10 ( 43.5)	30 ( 56.6)	9 ( 56.2)
<b>Race (%)</b>				
African American	1 ( 0.7)	0 ( 0.0)	0 ( 0.0)	0 ( 0.0)
Black	3 ( 2.0)	2 ( 8.7)	1 ( 1.9)	0 ( 0.0)
Multi-racial	0 ( 0.0)	0 ( 0.0)	1 ( 1.9)	0 ( 0.0)
White	142 ( 95.3)	21 ( 91.3)	51 ( 96.2)	15 ( 93.8)
Unknown	3 ( 2.0)	0 ( 0.0)	0 ( 0.0)	1 ( 6.2)
<b>Ethnicity (%)</b>				
Latino	3 ( 2.0)	0 ( 0.0)	1 ( 1.9)	0 ( 0.0)
Non-Latino	142 ( 95.3)	23 (100.0)	52 ( 98.1)	16 (100.0)
Unknown	4 ( 2.7)	0 ( 0.0)	0 ( 0.0)	0 ( 0.0)
<b>Age at death (years, mean (SD))</b>	63.93 (10.57)	63.18 (9.39)	68.88 (10.95)	59.10 (8.28)
<b>C9orf72 repeat expansion carriers (%)</b>	50 ( 33.6)	18 ( 78.3)	22 ( 41.5)	10 ( 62.5)
<b>Age at initial clinical syndrome symptom onset (years, mean (SD))</b>	59.74 (10.91)	59.31 (9.47)	60.89 (9.36)	52.84 (6.35)
<b>Initial clinical syndrome diagnostic delay (months, mean (SD))</b>	16.84 (19.00)	21.78 (28.58)	46.83 (36.27)	56.87 (51.19)
<b>Initial clinical syndrome symptom onset to secondary symptom onset (months, mean (SD))</b>	-	26.59 (23.14)	-	50.59 (52.81)
<b>Initial clinical syndrome symptom onset to death (months, mean (SD))</b>	50.38 (50.75)	46.38 (33.82)	95.87 (53.65)	75.07 (59.95)
<b>Non C9orf72 Mutation (%)</b>				
No known mutation	149 (100.0)	23 (100.0)	50 ( 94.3)	16 (100.0)
<i>GBE1</i>	0 ( 0.0)	0 ( 0.0)	1 ( 1.9)	0 ( 0.0)
<i>TBKI</i>	0 ( 0.0)	0 ( 0.0)	2 ( 3.8)	0 ( 0.0)

**Figure 1** *C9orf72* repeat expansions increase risk for secondary symptom development.

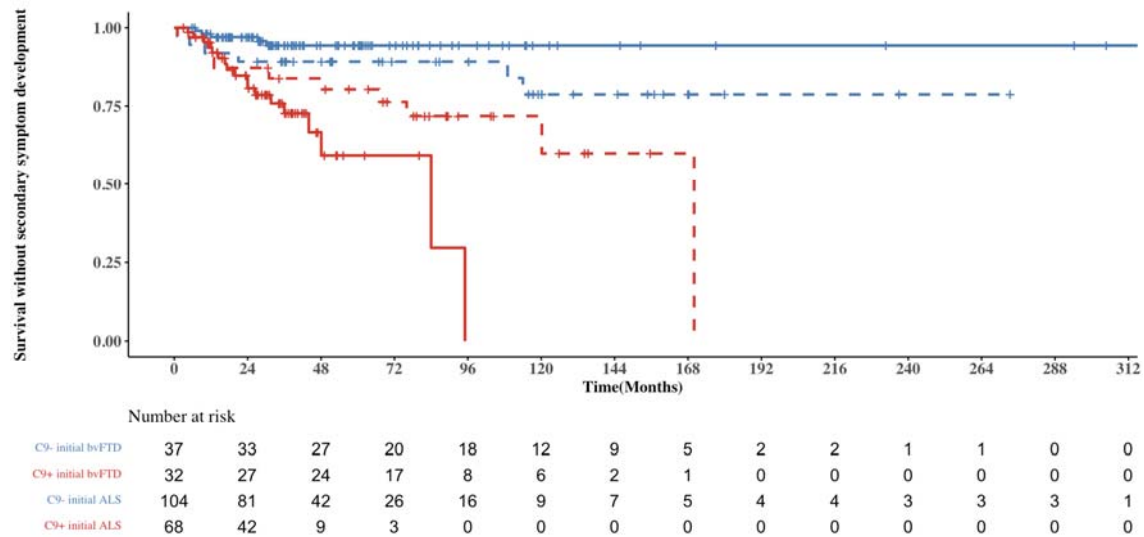
Kaplan-Meier survival curves are displayed stratified by (A) the presence (red) or absence (blue) of a *C9orf72* repeat expansion alone and (B) combined with initial clinical syndrome, ALS (solid line) or bvFTD (dashed line). Vertical drops indicate the development of secondary cognitive-behavioral or motor symptoms. Tick marks indicate censoring due to death. Shading represents 95% confidence intervals. The table shows the number of living individuals in the sample who have not yet developed secondary symptoms at a given time point.

**A**



Number at risk

Noncarrier	141	114	69	46	34	21	16	10	6	6	4	4	3	1
<i>C9orf72</i> repeat expansion carrier	100	69	33	20	8	6	2	1	0	0	0	0	0	0

**B**

## Acknowledgements

The authors would like to thank Laura Hennessy, Katerina Placek, Carrie Caswell, and Kaylee Naczi who contributed to the recruitment, data collection, and characterization of individuals included in this study.

## Funding

National Institutes of Health grant F32AG079618 (BES), P01AG066597 (CTM), NS109260 (DJI), Penn Institute on Aging, and The DeCrane Family Fund for Primary Progressive Aphasia

## Competing interests

The authors report no relevant competing interests.

## References

1. Strong MJ, Abrahams S, Goldstein LH, et al. Amyotrophic lateral sclerosis - frontotemporal spectrum disorder (ALS-FTSD): Revised diagnostic criteria. *Amyotrophic Lateral Sclerosis and Frontotemporal Degeneration*. 2017;18(3-4):153-174. doi:10.1080/21678421.2016.1267768

2. Neumann M, Sampathu DM, Kwong LK, et al. Ubiquitinated TDP-43 in Frontotemporal Lobar Degeneration and Amyotrophic Lateral Sclerosis. *Science*. 2006;314(5796):130-133. doi:10.1126/science.1134108
3. DeJesus-Hernandez M, Mackenzie IR, Boeve BF, et al. Expanded GGGGCC hexanucleotide repeat in non-coding region of C9ORF72 causes chromosome 9p-linked frontotemporal dementia and amyotrophic lateral sclerosis. *Neuron*. 2011;72(2):245-256. doi:10.1016/j.neuron.2011.09.011
4. Renton AE, Majounie E, Waite A, et al. A hexanucleotide repeat expansion in C9ORF72 is the cause of chromosome 9p21-linked ALS-FTD. *Neuron*. 2011;72(2):257-268. doi:10.1016/j.neuron.2011.09.010
5. Majounie E, Renton AE, Mok K, et al. Frequency of the C9orf72 hexanucleotide repeat expansion in patients with amyotrophic lateral sclerosis and frontotemporal dementia: a cross-sectional study. *Lancet Neurol*. 2012;11(4):323-330. doi:10.1016/S1474-4422(12)70043-1
6. Zou ZY, Zhou ZR, Che CH, Liu CY, He RL, Huang HP. Genetic epidemiology of amyotrophic lateral sclerosis: a systematic review and meta-analysis. *J Neurol Neurosurg Psychiatry*. 2017;88(7):540-549. doi:10.1136/jnnp-2016-315018
7. Olney RK, Murphy J, Forshe D, et al. The effects of executive and behavioral dysfunction on the course of ALS. *Neurology*. 2005;65(11):1774-1777. doi:10.1212/01.wnl.0000188759.87240.8b
8. Josephs KA, Knopman DS, Whitwell JL, et al. Survival in two variants of tau-negative frontotemporal lobar degeneration: FTL-D-U vs FTL-D-MND. *Neurology*. 2005;65(4):645-647. doi:10.1212/01.wnl.0000173178.67986.7f
9. Hu WT, Shelnutt M, Wilson A, et al. Behavior matters--cognitive predictors of survival in amyotrophic lateral sclerosis. *PLoS One*. 2013;8(2):e57584. doi:10.1371/journal.pone.0057584
10. Hodges JR, Davies R, Xuereb J, Kril J, Halliday G. Survival in frontotemporal dementia. *Neurology*. 2003;61(3):349-354. doi:10.1212/01.wnl.0000078928.20107.52
11. Ringholz GM, Appel SH, Bradshaw M, Cooke NA, Mosnik DM, Schulz PE. Prevalence and patterns of cognitive impairment in sporadic ALS. *Neurology*. 2005;65(4):586-590. doi:10.1212/01.wnl.0000172911.39167.b6
12. Rippon GA, Scarneas N, Gordon PH, et al. An Observational Study of Cognitive Impairment in Amyotrophic Lateral Sclerosis. *Archives of Neurology*. 2006;63(3):345-352. doi:10.1001/archneur.63.3.345
13. Montuschi A, Iazzolino B, Calvo A, et al. Cognitive correlates in amyotrophic lateral sclerosis: a population-based study in Italy. *J Neurol Neurosurg Psychiatry*. 2015;86(2):168-173. doi:10.1136/jnnp-2013-307223
14. Phukan J, Elamin M, Bede P, et al. The syndrome of cognitive impairment in amyotrophic lateral sclerosis: a population-based study. *J Neurol Neurosurg Psychiatry*. 2012;83(1):102-108. doi:10.1136/jnnp-2011-300188

15. McHutchison CA, Wu J, McMillan CT, et al. Temporal course of cognitive and behavioural changes in motor neuron diseases. *J Neurol Neurosurg Psychiatry*. 2024;95(4):316-324. doi:10.1136/jnnp-2023-331697
16. McMillan CT, Wu J, Rascovsky K, et al. Defining Cognitive Impairment in Amyotrophic Lateral Sclerosis: An Evaluation of Empirical Approaches. *Amyotroph Lateral Scler Frontotemporal Degener*. 2022;23(7-8):517-526. doi:10.1080/21678421.2022.2039713
17. Johnson JK, Diehl J, Mendez MF, et al. Frontotemporal lobar degeneration: demographic characteristics of 353 patients. *Arch Neurol*. 2005;62(6):925-930. doi:10.1001/archneur.62.6.925
18. Rosso SM, Donker Kaat L, Baks T, et al. Frontotemporal dementia in The Netherlands: patient characteristics and prevalence estimates from a population-based study. *Brain*. 2003;126(Pt 9):2016-2022. doi:10.1093/brain/awg204
19. Burrell JR, Kiernan MC, Vucic S, Hodges JR. Motor neuron dysfunction in frontotemporal dementia. *Brain*. 2011;134(Pt 9):2582-2594. doi:10.1093/brain/awr195
20. Lomen-Hoerth C, Anderson T, Miller B. The overlap of amyotrophic lateral sclerosis and frontotemporal dementia. *Neurology*. 2002;59(7):1077-1079. doi:10.1212/WNL.59.7.1077
21. Gijssels I, Van Langenhove T, van der Zee J, et al. A C9orf72 promoter repeat expansion in a Flanders-Belgian cohort with disorders of the frontotemporal lobar degeneration-amyotrophic lateral sclerosis spectrum: a gene identification study. *Lancet Neurol*. 2012;11(1):54-65. doi:10.1016/S1474-4422(11)70261-7
22. Moore KM, Nicholas J, Grossman M, et al. Age at symptom onset and death and disease duration in genetic frontotemporal dementia: an international retrospective cohort study. *Lancet Neurol*. 2020;19(2):145-156. doi:10.1016/S1474-4422(19)30394-1
23. Simón-Sánchez J, Dopfer EGP, Cohn-Hokke PE, et al. The clinical and pathological phenotype of C9ORF72 hexanucleotide repeat expansions. *Brain*. 2012;135(3):723-735. doi:10.1093/brain/awr353
24. Samra K, MacDougall AM, Peakman G, et al. Motor symptoms in genetic frontotemporal dementia: developing a new module for clinical rating scales. *J Neurol*. 2023;270(3):1466-1477. doi:10.1007/s00415-022-11442-y
25. Mahoney CJ, Beck J, Rohrer JD, et al. Frontotemporal dementia with the C9ORF72 hexanucleotide repeat expansion: clinical, neuroanatomical and neuropathological features. *Brain*. 2012;135(Pt 3):736-750. doi:10.1093/brain/awr361
26. Byrne S, Elamin M, Bede P, et al. Cognitive and clinical characteristics of patients with amyotrophic lateral sclerosis carrying a C9orf72 repeat expansion: a population-based cohort study. *Lancet Neurol*. 2012;11(3):232-240. doi:10.1016/S1474-4422(12)70014-5
27. Van Langenhove T, Piguet O, Burrell JR, et al. Predicting Development of Amyotrophic Lateral Sclerosis in Frontotemporal Dementia. *Journal of Alzheimer's Disease*. 2017;58(1):163-170. doi:10.3233/JAD-161272

28. Smith BN, Newhouse S, Shatunov A, et al. The C9ORF72 expansion mutation is a common cause of ALS+/-FTD in Europe and has a single founder. *Eur J Hum Genet.* 2013;21(1):102-108. doi:10.1038/ejhg.2012.98
29. Toledo JB, Van Deerlin VM, Lee EB, et al. A platform for discovery: The University of Pennsylvania Integrated Neurodegenerative Disease Biobank. *Alzheimers Dement.* 2014;10(4):477-484.e1. doi:10.1016/j.jalz.2013.06.003
30. Suh E, Lee EB, Neal D, et al. Semi-automated quantification of C9orf72 expansion size reveals inverse correlation between hexanucleotide repeat number and disease duration in frontotemporal degeneration. *Acta neuropathologica.* 2015;130(3):363. doi:10.1007/s00401-015-1445-9
31. Mackenzie IRA, Neumann M, Baborie A, et al. A harmonized classification system for FTL-D-TDP pathology. *Acta Neuropathol.* 2011;122(1):111-113. doi:10.1007/s00401-011-0845-8
32. Mackenzie IRA, Neumann M, Bigio EH, et al. Nomenclature and nosology for neuropathologic subtypes of frontotemporal lobar degeneration: an update. *Acta Neuropathol.* 2010;119(1):1-4. doi:10.1007/s00401-009-0612-2
33. Grambsch PM, Therneau TM. Proportional Hazards Tests and Diagnostics Based on Weighted Residuals. *Biometrika.* 1994;81(3):515-526. doi:10.2307/2337123
34. Snowden JS, Harris J, Richardson A, et al. Frontotemporal dementia with amyotrophic lateral sclerosis: A clinical comparison of patients with and without repeat expansions in C9orf72. *Amyotrophic Lateral Sclerosis and Frontotemporal Degeneration.* 2013;14(3):172-176. doi:10.3109/21678421.2013.765485
35. Toyoshima Y, Tan CF, Kozakai T, Tanaka M, Takahashi H. Is motor neuron disease-inclusion dementia a forme fruste of amyotrophic lateral sclerosis with dementia? An autopsy case further supporting the disease concept. *Neuropathology.* 2005;25(3):214-219. doi:10.1111/j.1440-1789.2005.00599.x
36. Hu WT, Seelaar H, Josephs KA, et al. Survival Profiles of Patients With Frontotemporal Dementia and Motor Neuron Disease. *Archives of Neurology.* 2009;66(11):1359-1364. doi:10.1001/archneurol.2009.253
37. Goldman JS, Farmer JM, Van Deerlin VM, Wilhelmsen KC, Miller BL, Grossman M. Frontotemporal dementia: genetics and genetic counseling dilemmas. *Neurologist.* 2004;10(5):227-234. doi:10.1097/01.nrl.0000138735.48533.26
38. Rohrer JD, Guerreiro R, Vandrovicova J, et al. The heritability and genetics of frontotemporal lobar degeneration. *Neurology.* 2009;73(18):1451-1456. doi:10.1212/WNL.0b013e3181bf997a
39. Byrne S, Walsh C, Lynch C, et al. Rate of familial amyotrophic lateral sclerosis: a systematic review and meta-analysis. *J Neurol Neurosurg Psychiatry.* 2011;82(6):623-627. doi:10.1136/jnnp.2010.224501

40. Rhodes E, Alfa S, Jin HA, et al. Cognitive reserve in ALS: the role of occupational skills and requirements. *Amyotroph Lateral Scler Frontotemporal Degener*. Published online April 9, 2024:1-10. doi:10.1080/21678421.2024.2336113
41. Massimo L, Zee J, Xie SX, et al. Occupational attainment influences survival in autopsy-confirmed frontotemporal degeneration. *Neurology*. 2015;84(20):2070-2075. doi:10.1212/WNL.0000000000001595
42. Placek K, Baer GM, Elman L, et al. UNC13A polymorphism contributes to frontotemporal disease in sporadic amyotrophic lateral sclerosis. *Neurobiol Aging*. 2019;73:190-199. doi:10.1016/j.neurobiolaging.2018.09.031
43. Placek K, Benatar M, Wu J, et al. Machine learning suggests polygenic risk for cognitive dysfunction in amyotrophic lateral sclerosis. *EMBO Mol Med*. 2021;13(1):e12595. doi:10.15252/emmm.202012595